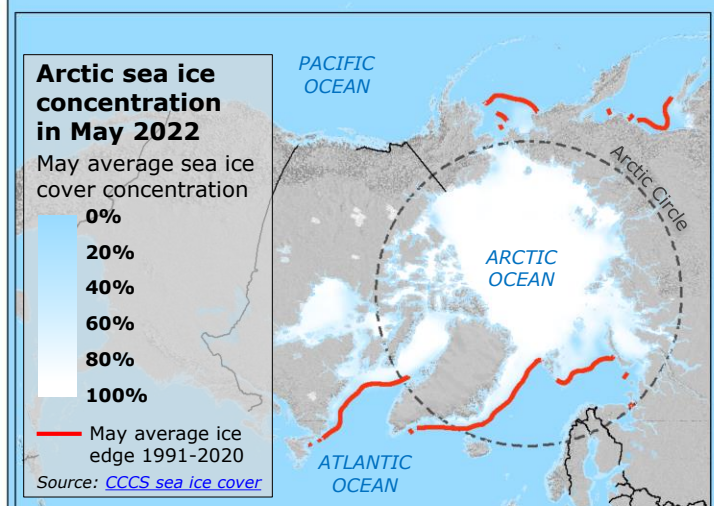
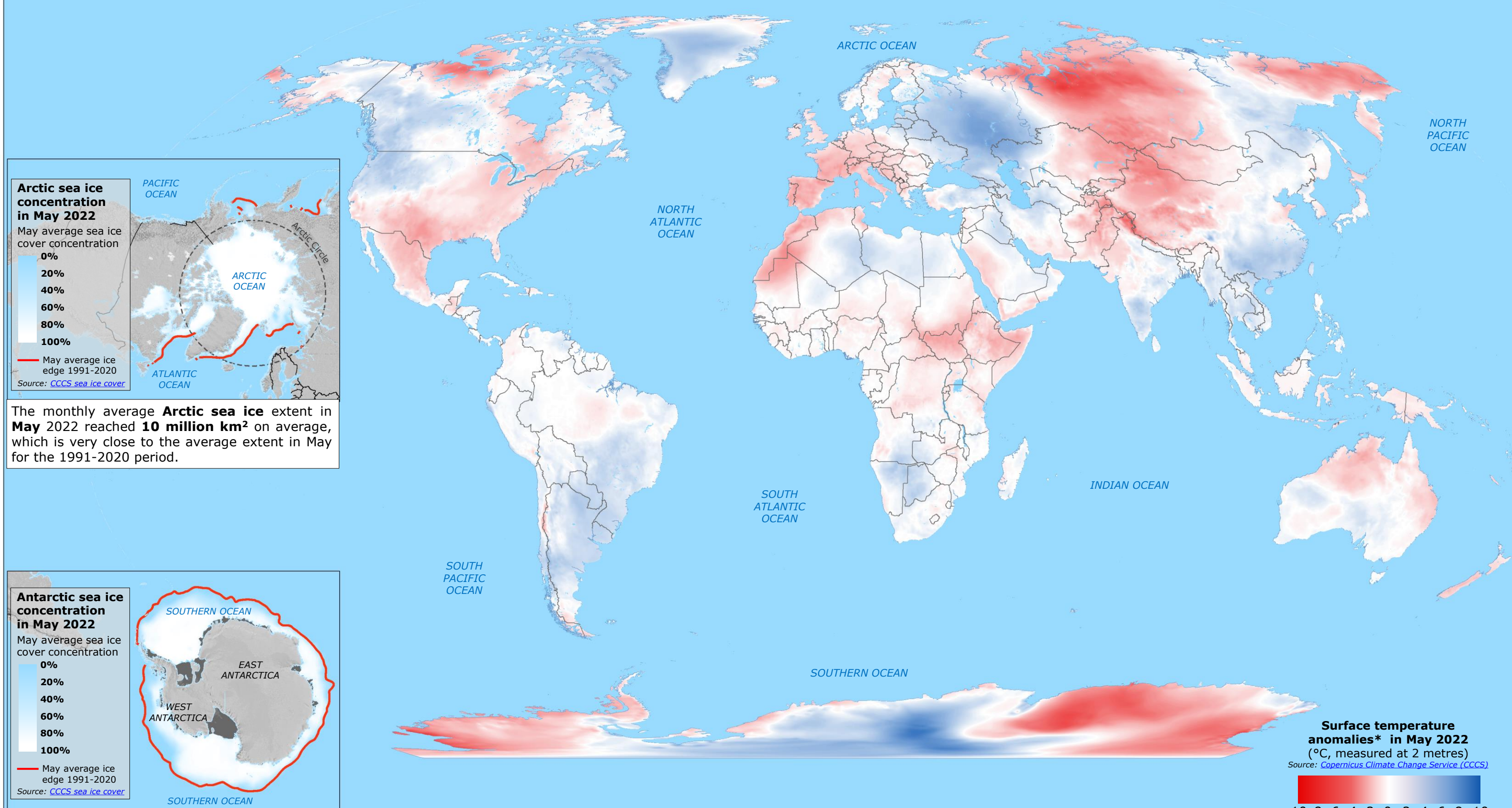


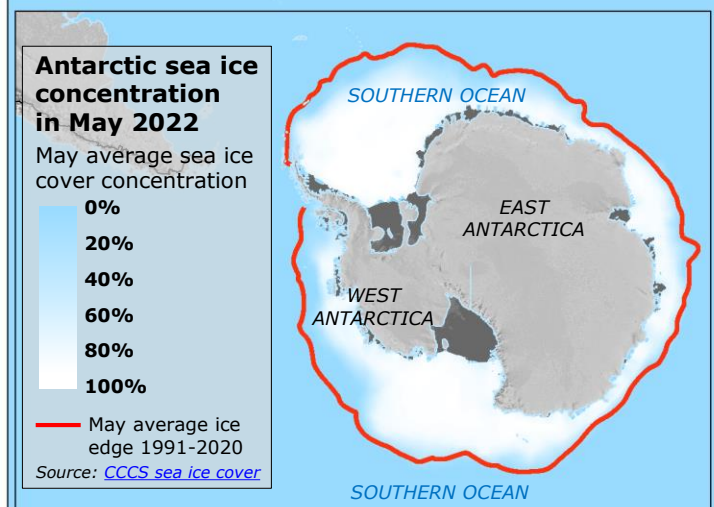
World | Temperature Anomalies in May 2022

The **global average temperature for May 2022 was about 0.26°C higher** than the 1991-2020 average for May, resulting in the **fifth warmest May on record** (jointly with 2018 and 2021), according to the dataset from the Copernicus Climate Change Service/ECMWF.

Source: [Copernicus Climate Change Service: Surface air temperature for May 2022](#)



The monthly average **Arctic sea ice** extent in **May 2022** reached **10 million km²** on average, which is very close to the average extent in May for the 1991-2020 period.



In May 2022, **Antarctic sea ice** extent reached 9.8 million km² on average, or approximately **8% below the 1991-2020 average for May**, ranking 6th lowest in the 44-year satellite record.

Latest additional overview maps on Global temperature anomalies have been produced as DG ECHO Daily Maps, available on the ERCC Daily Map [Portal](#).

© European Union, 2022. Map produced by the JRC. The boundaries and the names shown on this map do not imply official endorsement or acceptance by the European Union.

Surface temperature anomalies* in May 2022
 (°C, measured at 2 metres)
 Source: [Copernicus Climate Change Service \(CCCS\)](#)

10 8 6 4 2 0 -2 -4 -6 -8 -10

*Relative to the 1991-2020 reference period