

# DEPOT HARBOR

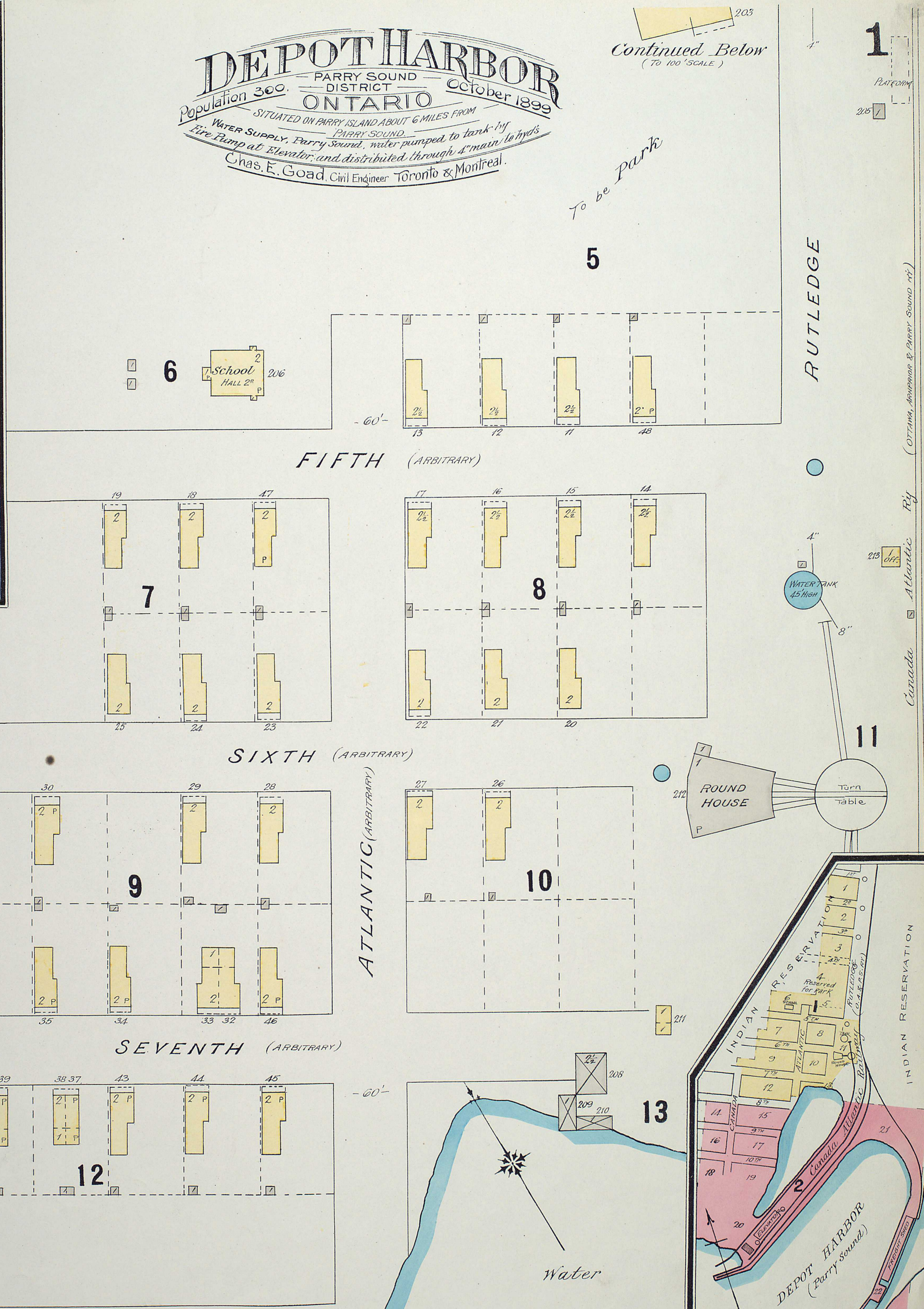
PARRY SOUND DISTRICT ONTARIO October 1899

Population 300.

SITUATED ON PARRY ISLAND ABOUT 6 MILES FROM PARRY SOUND.

WATER SUPPLY, Parry Sound, water pumped to tank by Fire Pump at Elevator, and distributed through 4" main to hydrants  
 Chas. E. Goad, Civil Engineer Toronto & Montreal.

Continued Below  
(TO 100' SCALE)



**KEY**

BUILDINGS RED ARE BRICK  
 COLORED BLUE STONE  
 YELLOW ARE WOODEN BUILDINGS  
 BLACK SHEDS BARN & C  
 EDGED WITH RED ARE VENEERED  
 IF MARKED R.C. ROUGH CAST OR PLASTER  
 IF MARKED P.C. PROBABLY FIRE CUT OFF

NO. OF STORIES 2<sup>nd</sup>  
 SLATE ROOF  
 TIN OR METAL ROOF  
 COMPOSITION ROOF  
 SHINGLES ON WOOD  
 SHINGLES IN MORTAR  
 MAINTAINED ROOF  
 BOILERS  
 SET IN BRICK  
 PASSAGE UNDER

FIRE WALL ONE FOOT ABOVE ROOF  
 TWO FEET  
 OPENING IN BRICK WALL  
 OPENING WITH IRON DOORS  
 WOODEN PARTITION

WINDOWS READ FROM LEFT TO RIGHT  
 FACING BUILDING  
 1<sup>ST</sup>, 2<sup>ND</sup>, 3<sup>RD</sup>, 4<sup>TH</sup> IRON SHUTTERS

BRICK PARAPET WALL  
 STABLE  
 GALLERY OR VERANDAH  
 METAL CORNICE (SOLID LINE)  
 WOODEN CORNICE (BROKEN LINE)

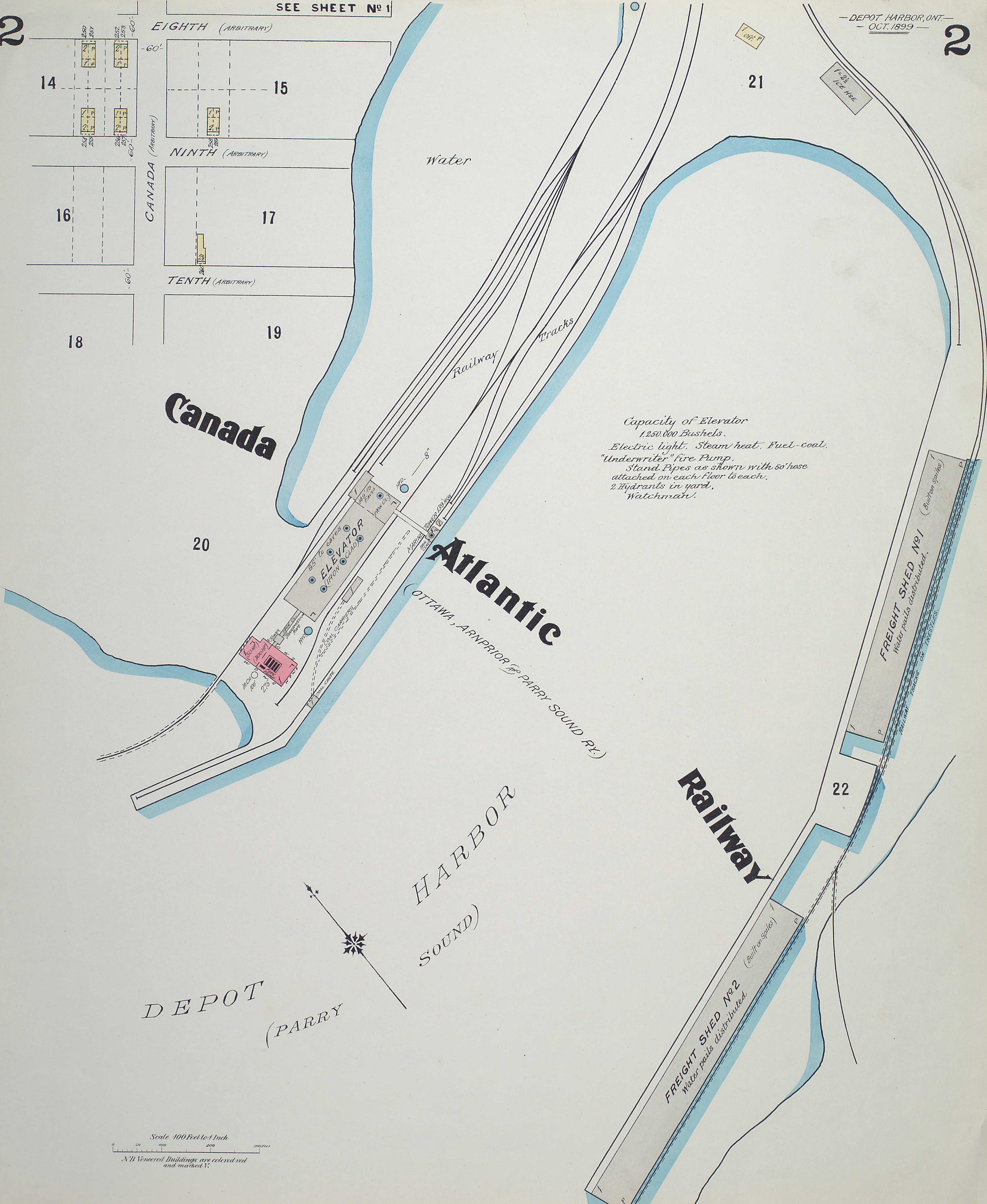
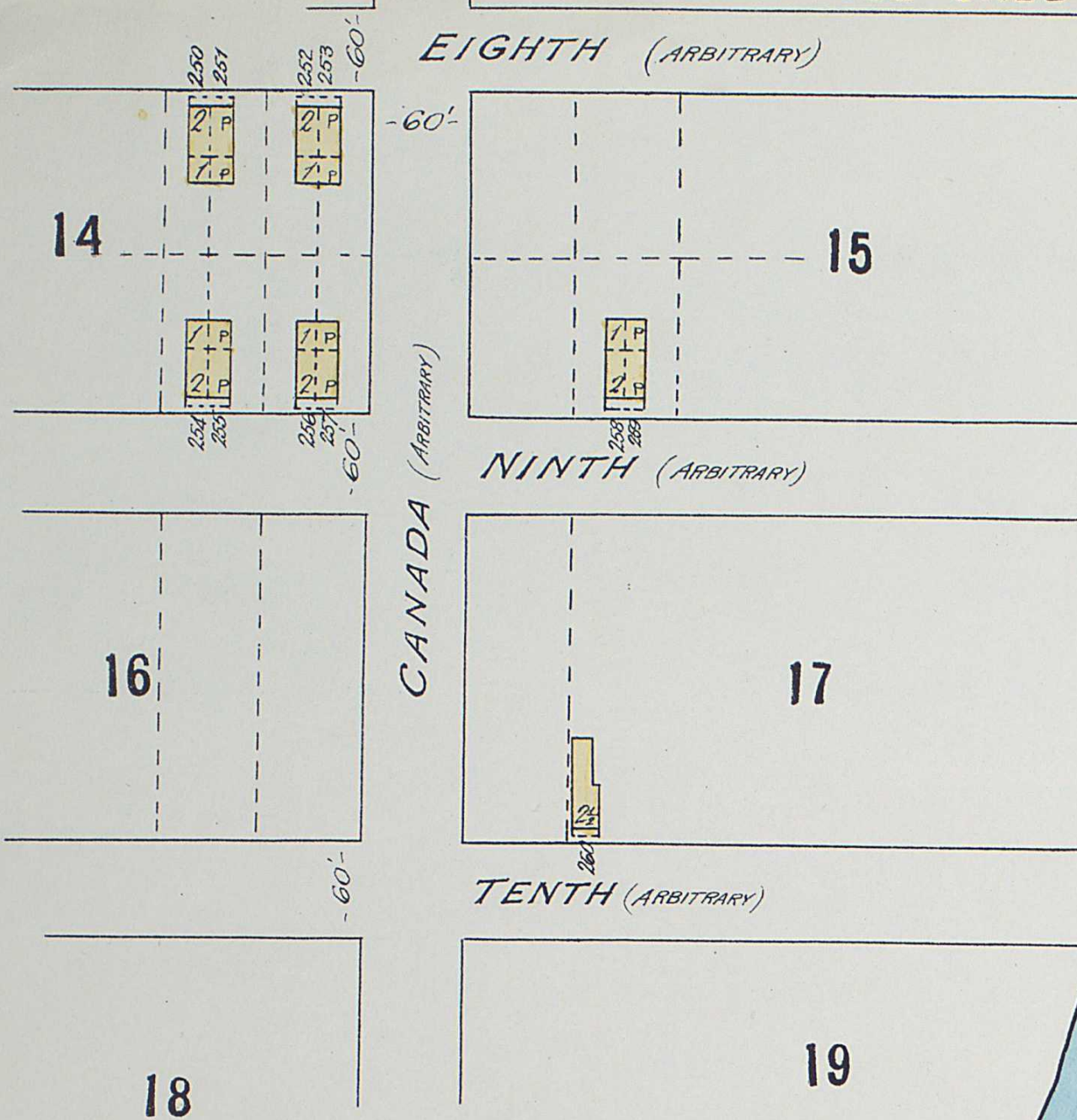
SKYLIGHT - LINES UNDER DENOTE OPENINGS IN FLOORS  
 LUMBER PILED  
 HYDRANTS ON KEY PLAN  
 TANKS ON KEY PLAN

FIGURES IN BRACKETS (50) & ° DENOTE  
 RELATIVE HEIGHTS OF GROUND.

NO. IN STREETS THUS 66' ARE STREET WIDTHS  
 ° S DENOTES STORE.  
 D.D. DETACHED DWELLINGS. S.D. SCATTERED DWGS.

Entered according to Act of Parliament of Canada in the year One Thousand eight hundred and ninety nine by Chas. E. Goad in the Office of the Minister of Agriculture at Ottawa.





Capacity of Elevator  
1,250,000 Bushels.  
Electric light. Steam heat. Fuel-coal.  
"Underwriter" fire Pump.  
Stand Pipes as shown with 50' hose  
attached on each floor to each.  
2 Hydrants in yard.  
Watchman.

Scale 100 Feet to 1 Inch  
NB Veneered Buildings are colored red  
and marked V.