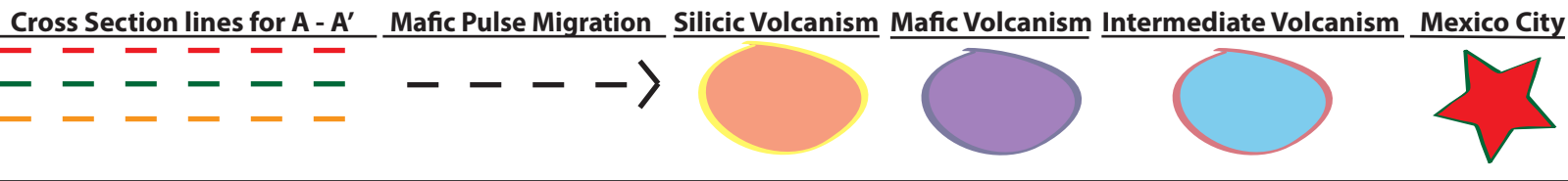
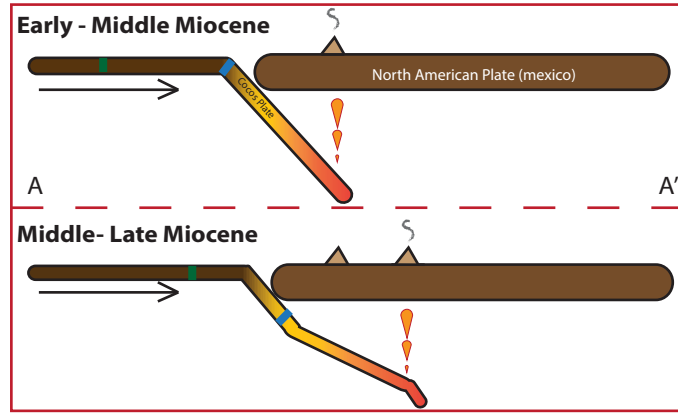
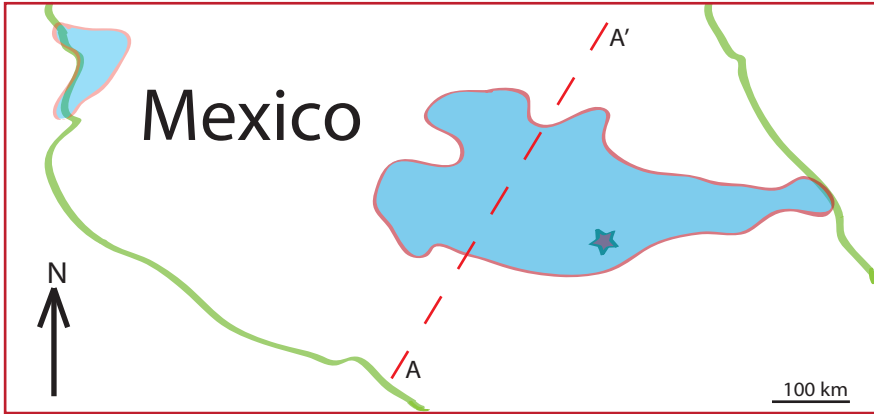


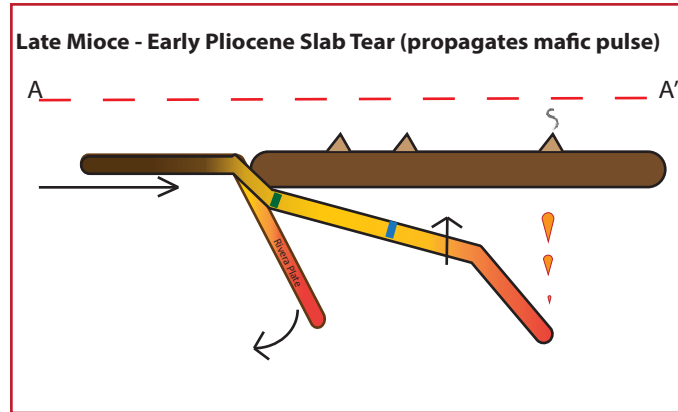
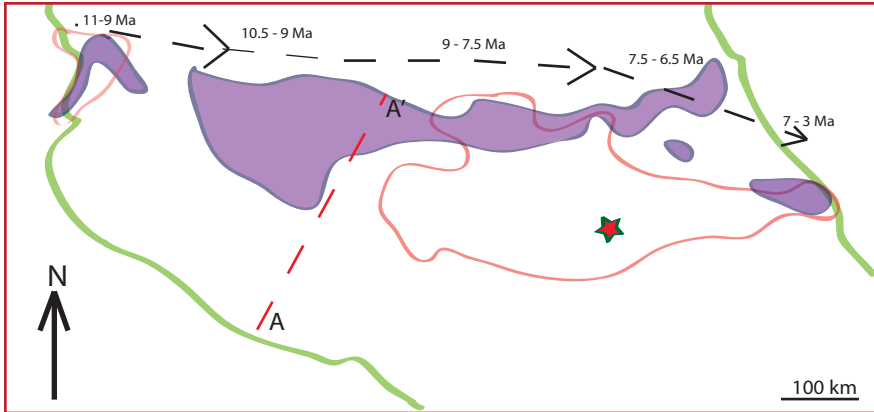
Volcanic Evolution of Trans-Mexican Volcanic Belt



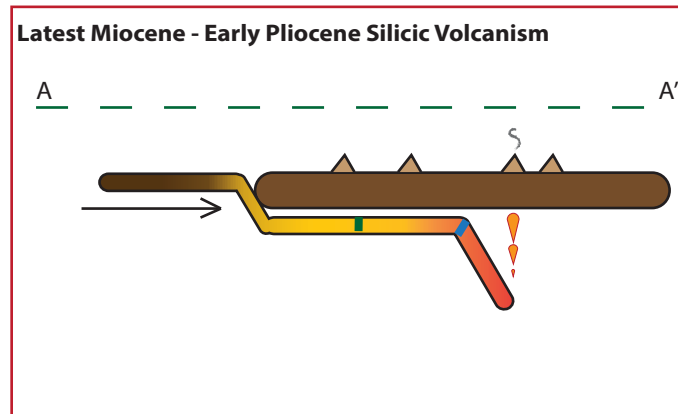
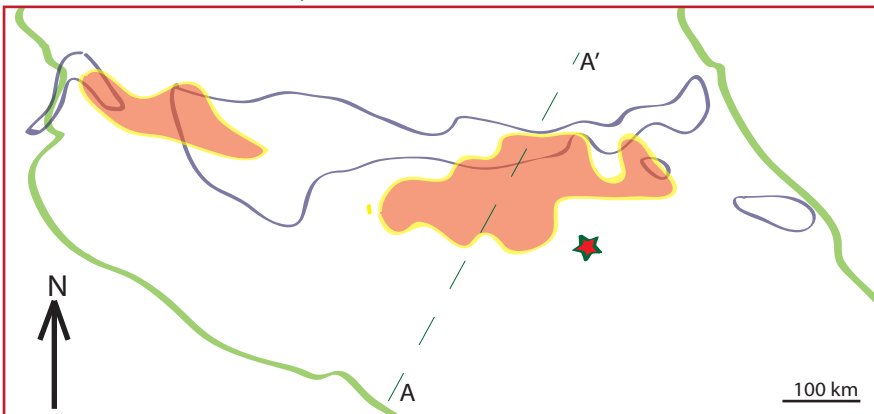
Early - Late Miocene (~20 - 8 Ma)



Late Miocene - Early Pliocene Mafic Pulse (~11 - 3 Ma)



Latest Miocene - Early Pliocene (~7.5 - 3 Ma)



Late Pliocene - Holocene (3 - 0 Ma)

