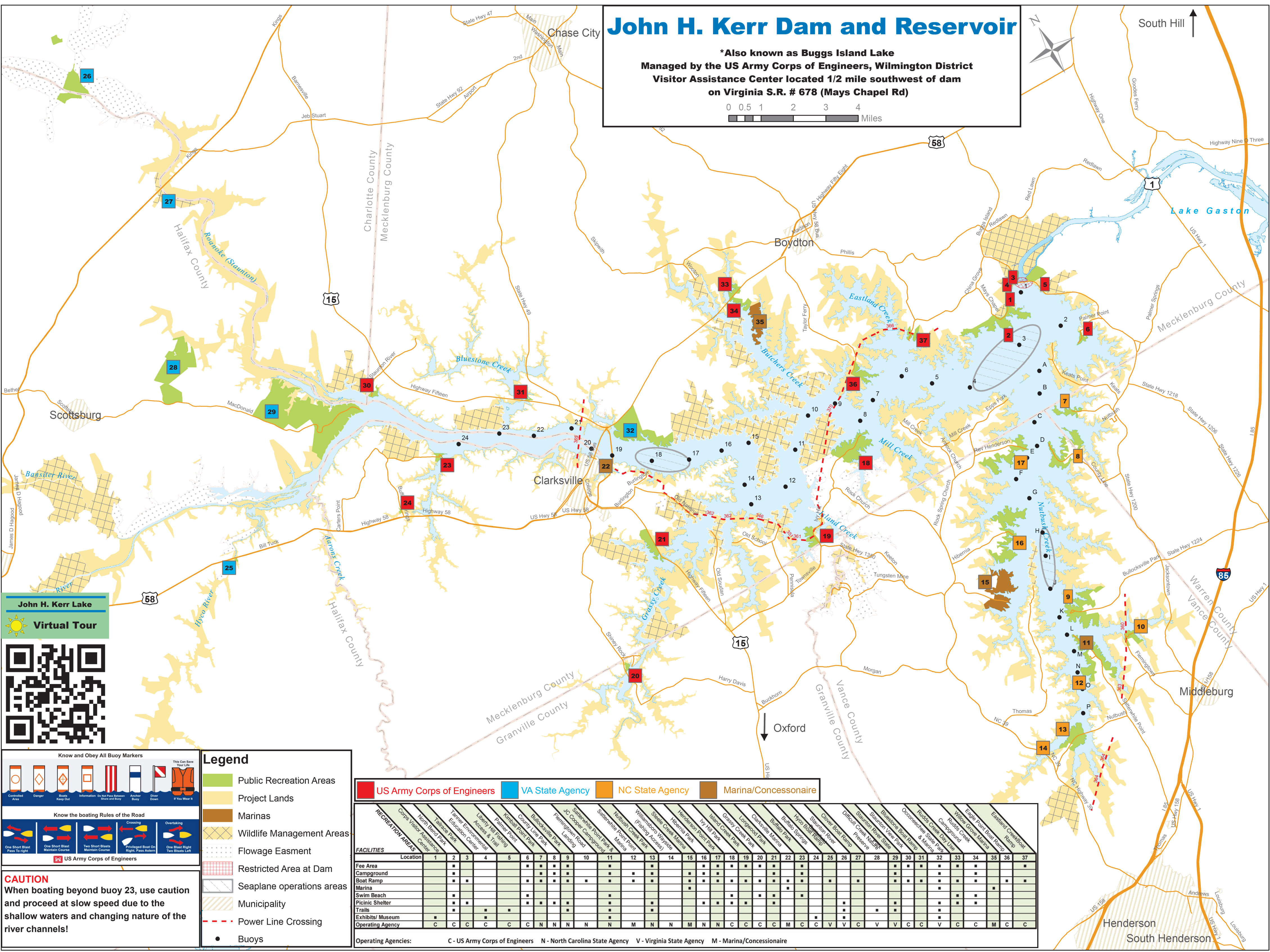
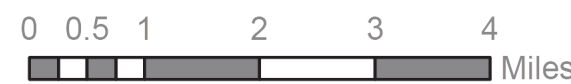


John H. Kerr Dam and Reservoir

***Also known as Buggs Island Lake**
Managed by the US Army Corps of Engineers, Wilmington District
Visitor Assistance Center located 1/2 mile southwest of dam
on Virginia S.R. # 678 (Mays Chapel Rd)



John H. Kerr Lake
Virtual Tour



Know and Obey All Buoy Markers

Know the boating Rules of the Road

US Army Corps of Engineers

Legend

- Public Recreation Areas
- Project Lands
- Marinas
- Wildlife Management Areas
- Flowage Easment
- Restricted Area at Dam
- Seaplane operations areas
- Municipality
- Power Line Crossing
- Buoys

US Army Corps of Engineers **VA State Agency** **NC State Agency** **Marina/Concessionaire**

FACILITIES	RECREATION AREAS																																						
	Location	1	2	3	4	5	6	7	8	9	10	11	12	13	14	15	16	17	18	19	20	21	22	23	24	25	26	27	28	29	30	31	32	33	34	35	36	37	
Fee Area																																							
Campground																																							
Boat Ramp																																							
Marina																																							
Swim Beach																																							
Picnic Shelter																																							
Trails																																							
Exhibits/ Museum																																							
Operating Agency	C	C	C	C	C	C	C	N	N	N	N	N	N	M	N	N	N	N	N	N	N	N	N	N	N	N	N	N	N	N	N	N	N	N	N	N	N	N	

Operating Agencies: C - US Army Corps of Engineers N - North Carolina State Agency V - Virginia State Agency M - Marina/Concessionaire

CAUTION
 When boating beyond buoy 23, use caution and proceed at slow speed due to the shallow waters and changing nature of the river channels!