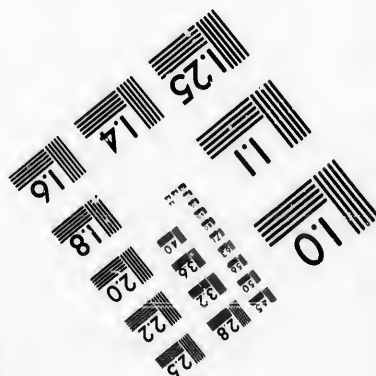
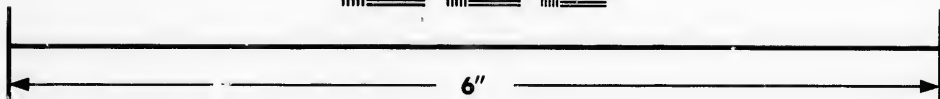
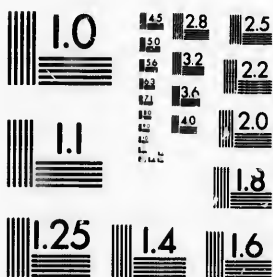


**IMAGE EVALUATION
TEST TARGET (MT-3)**



**Photographic
Sciences
Corporation**

23 WEST MAIN STREET
WEBSTER, N.Y. 14580
(716) 872-4503

1.5
1.6
1.8
2.0
2.2
2.5
2.8
3.2
3.6

**CIHM/ICMH
Microfiche
Series.**

**CIHM/ICMH
Collection de
microfiches.**



Canadian Institute for Historical Microreproductions / Institut canadien de microreproductions historiques

1.5
1.6
1.8
2.0
2.2
2.5
2.8
3.2
3.6

© 1987

Technical and Bibliographic Notes/Notes techniques et bibliographiques

The Institute has attempted to obtain the best original copy available for filming. Features of this copy which may be bibliographically unique, which may alter any of the images in the reproduction, or which may significantly change the usual method of filming, are checked below.

L'Institut a microfilmé le meilleur exemplaire qu'il lui a été possible de se procurer. Les détails de cet exemplaire qui sont peut-être uniques du point de vue bibliographique, qui peuvent modifier une image reproduite, ou qui peuvent exiger une modification dans la méthode normale de filmage sont indiqués ci-dessous.

- Coloured covers/
Couverture de couleur
- Covers damaged/
Couverture endommagée
- Covers restored and/or laminated/
Couverture restaurée et/ou pelliculée
- Cover title missing/
Le titre de couverture manque
- Coloured maps/
Cartes géographiques en couleur
- Coloured ink (i.e. other than blue or black)/
Encre de couleur (i.e. autre que bleue ou noire)
- Coloured plates and/or illustrations/
Planches et/ou illustrations en couleur
- Bound with other material/
Relié avec d'autres documents
- Tight binding may cause shadows or distortion along interior margin/
La reliure serrée peut causer de l'ombre ou de la distorsion le long de la marge intérieure
- Blank leaves added during restoration may appear within the text. Whenever possible, these have been omitted from filming/
Il se peut que certaines pages blanches ajoutées lors d'une restauration apparaissent dans le texte, mais, lorsque cela était possible, ces pages n'ont pas été filmées.
- Additional comments:
Commentaires supplémentaires:

- Coloured pages/
Pages de couleur
- Pages damaged/
Pages endommagées
- Pages restored and/or laminated/
Pages restaurées et/ou pelliculées
- Pages discoloured, stained or foxed/
Pages décolorées, tachetées ou piquées
- Pages detached/
Pages détachées
- Showthrough/
Transparence
- Quality of print varies/
Qualité inégale de l'impression
- Includes supplementary material/
Comprend du matériel supplémentaire
- Only edition available/
Seule édition disponible
- Pages wholly or partially obscured by errata slips, tissues, etc., have been refilmed to ensure the best possible image/
Les pages totalement ou partiellement obscurcies par un feuillet d'errata, une pelure, etc., ont été filmées à nouveau de façon à obtenir la meilleure image possible.

This item is filmed at the reduction ratio checked below/
Ce document est filmé au taux de réduction indiqué ci-dessous.

10X	12X	14X	16X	18X	20X	22X	24X	26X	28X	30X	32X
<input type="checkbox"/>	<input type="checkbox"/>	<input type="checkbox"/>	<input type="checkbox"/>	<input type="checkbox"/>	<input type="checkbox"/>	<input checked="" type="checkbox"/>	<input type="checkbox"/>	<input type="checkbox"/>	<input type="checkbox"/>	<input type="checkbox"/>	<input type="checkbox"/>

The copy filmed here has been reproduced thanks to the generosity of:

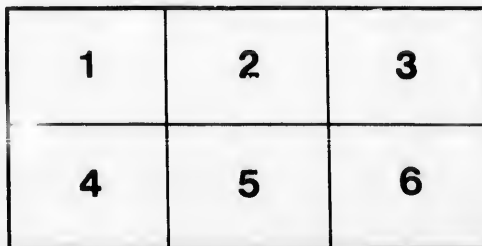
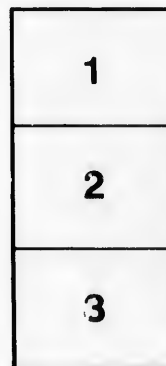
Metropolitan Toronto Library
Canadian History Department

The images appearing here are the best quality possible considering the condition and legibility of the original copy and in keeping with the filming contract specifications.

Original copies in printed paper covers are filmed beginning with the front cover and ending on the last page with a printed or illustrated Impression, or the back cover when appropriate. All other original copies are filmed beginning on the first page with a printed or illustrated impression, and ending on the last page with a printed or illustrated Impression.

The last recorded frame on each microfiche shall contain the symbol \rightarrow (meaning "CONTINUED"), or the symbol ∇ (meaning "END"), whichever applies.

Maps, plates, charts, etc., may be filmed at different reduction ratios. Those too large to be entirely included in one exposure are filmed beginning in the upper left hand corner, left to right and top to bottom, as many frames as required. The following diagrams illustrate the method:



L'exemplaire filmé fut reproduit grâce à la générosité de:

Metropolitan Toronto Library
Canadian History Department

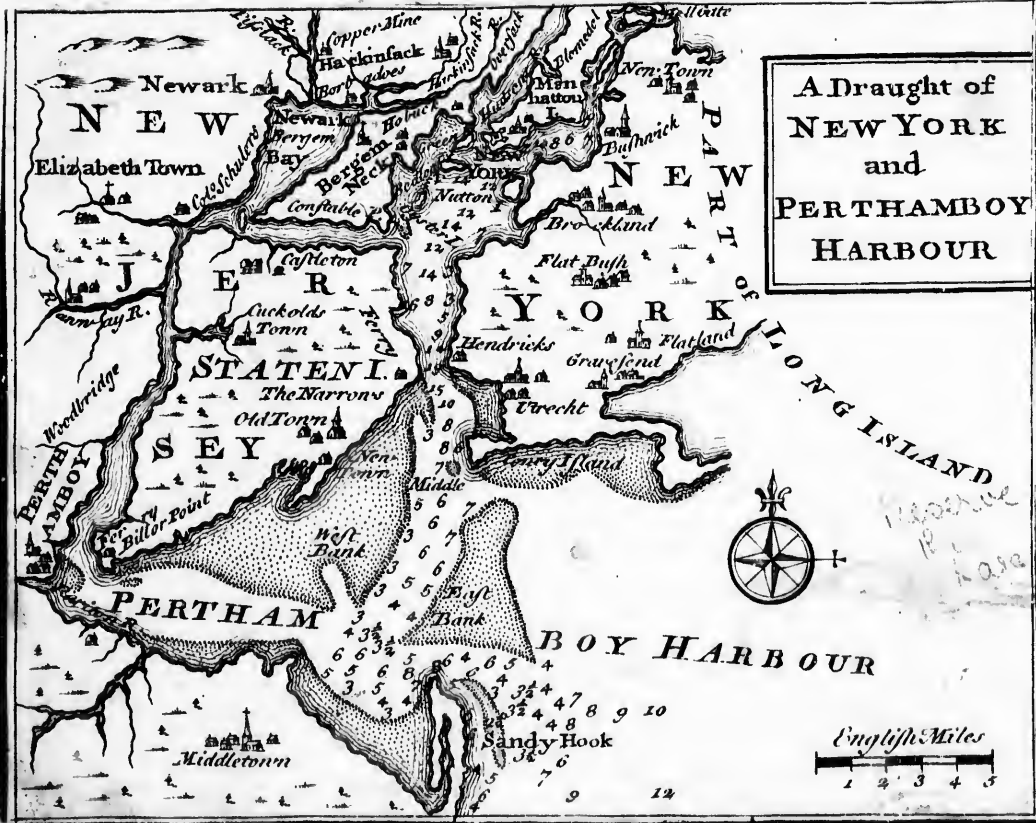
Les images suivantes ont été reproduites avec le plus grand soin, compte tenu de la condition et de la netteté de l'exemplaire filmé, et en conformité avec les conditions du contrat de filmage.

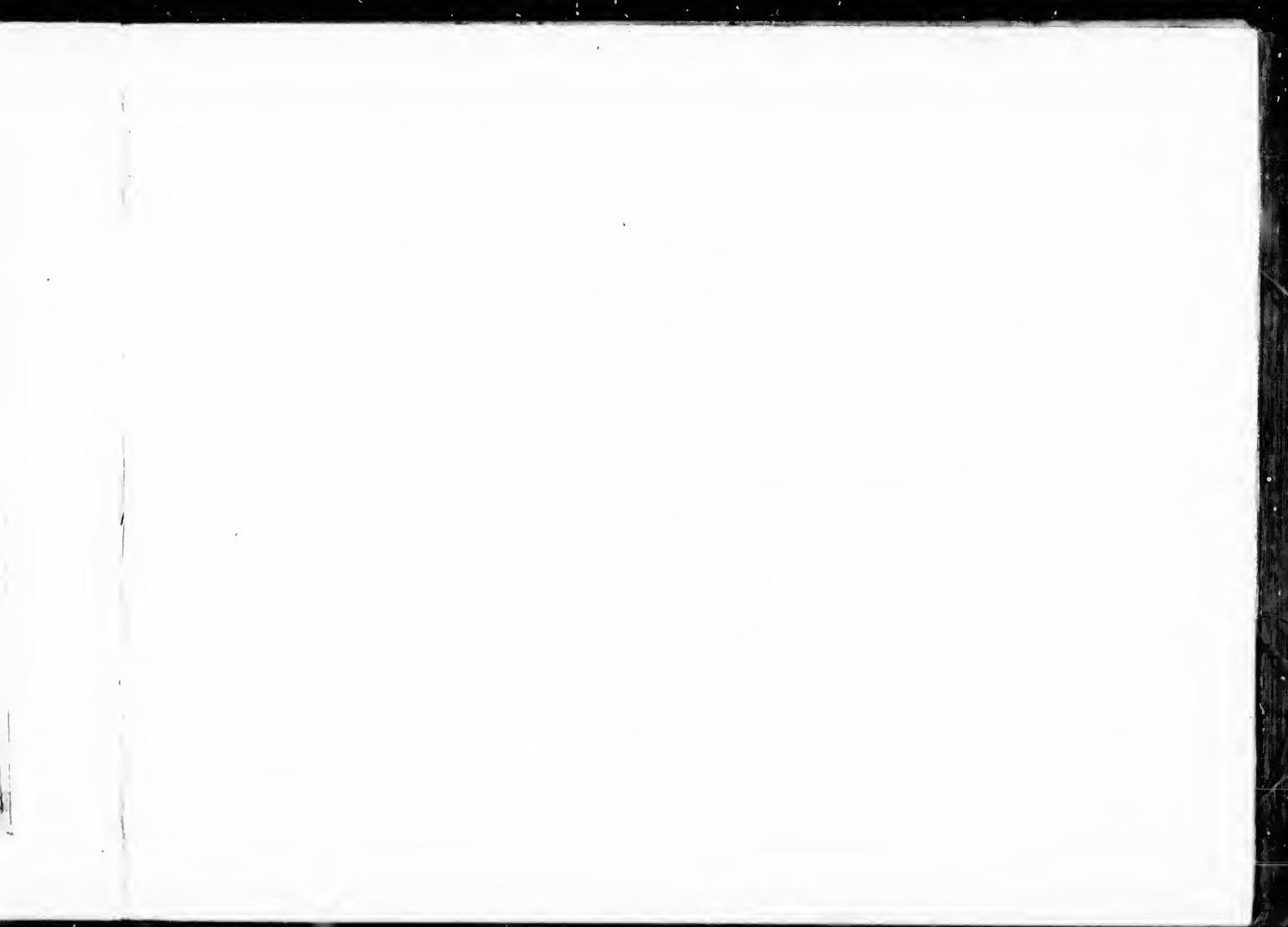
Les exemplaires originaux dont la couverture en papier est imprimée sont filmés en commençant par le premier plat et en terminant soit par la dernière page qui comporte une empreinte d'impression ou d'illustration, soit par le second plat, selon le cas. Tous les autres exemplaires originaux sont filmés en commençant par la première page qui comporte une empreinte d'impression ou d'illustration et en terminant par la dernière page qui comporte une telle empreinte.

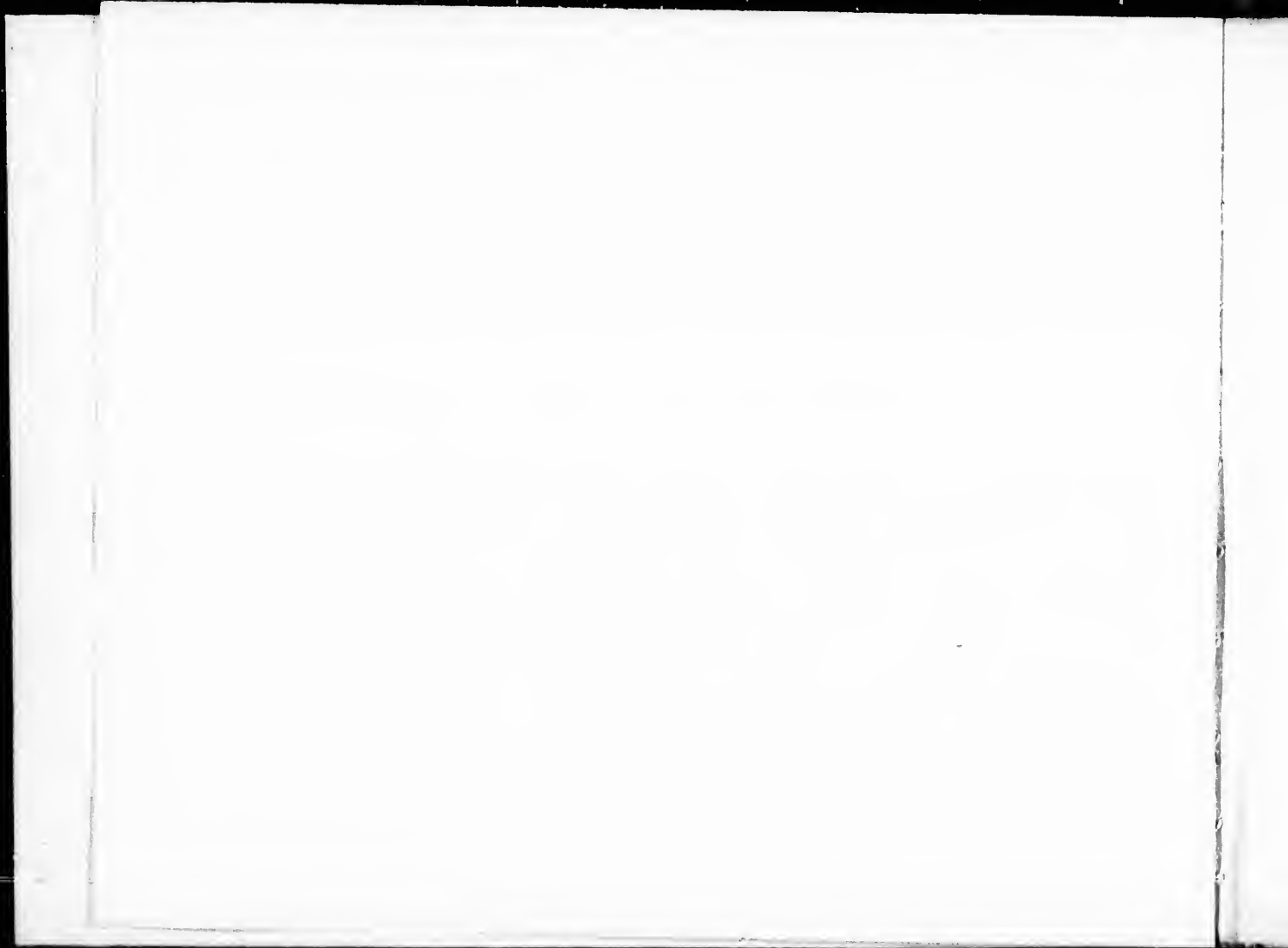
Un des symboles suivants apparaîtra sur la dernière image de chaque microfiche, selon le cas: le symbole \rightarrow signifie "A SUIVRE", le symbole ∇ signifie "FIN".

Les cartes, planches, tableaux, etc., peuvent être filmés à des taux de réduction différents. Lorsque le document est trop grand pour être reproduit en un seul cliché, il est filmé à partir de l'angle supérieur gauche, de gauche à droite, et de haut en bas, en prenant le nombre d'images nécessaire. Les diagrammes suivants illustrent la méthode.

A Draught of
 NEW YORK
 and
 PERTHAMBOY
 HARBOUR





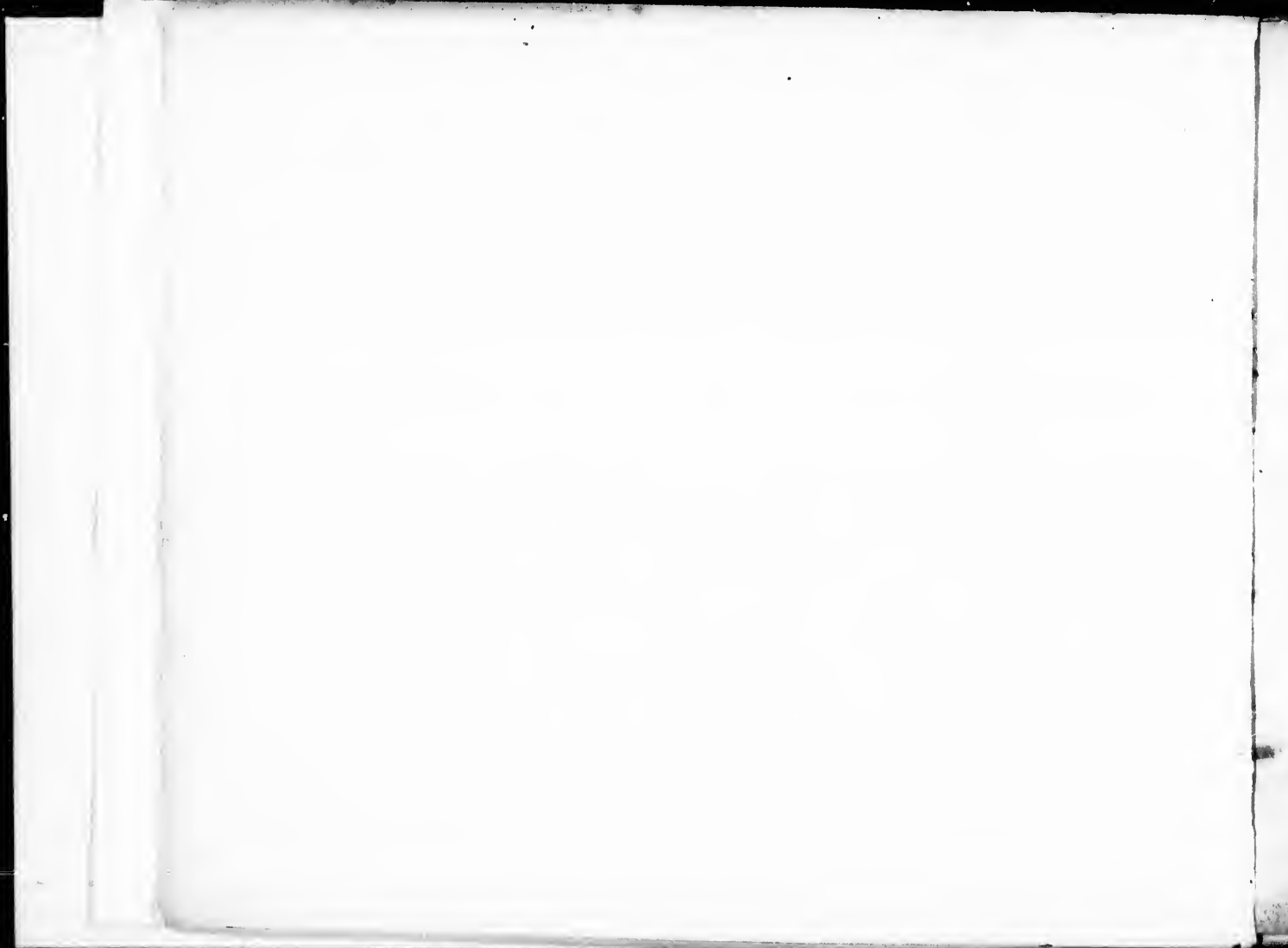


A set of
Plans and Forts
in
America,

Reduced from actual surveys.
1765.

London:

Published according to Act of Parliament,
by Mary Ann Roeque. Topographer to His Royal
Highness the Duke of Gloucester, in the Strand.



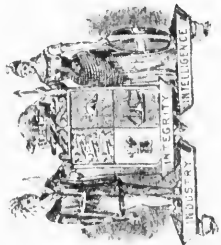
Y. By T. Maerſchalckm, 1763.

rch.
Church

L. S.^t Georges Chapel
M. Moravian Meeting
N. New Lutheran Meeting

X. Meal Market
Y. Fly Market
Z. Burlins Market

TR
Shelf No. G23.1. R57



TORONTO PUBLIC LIBRARY.

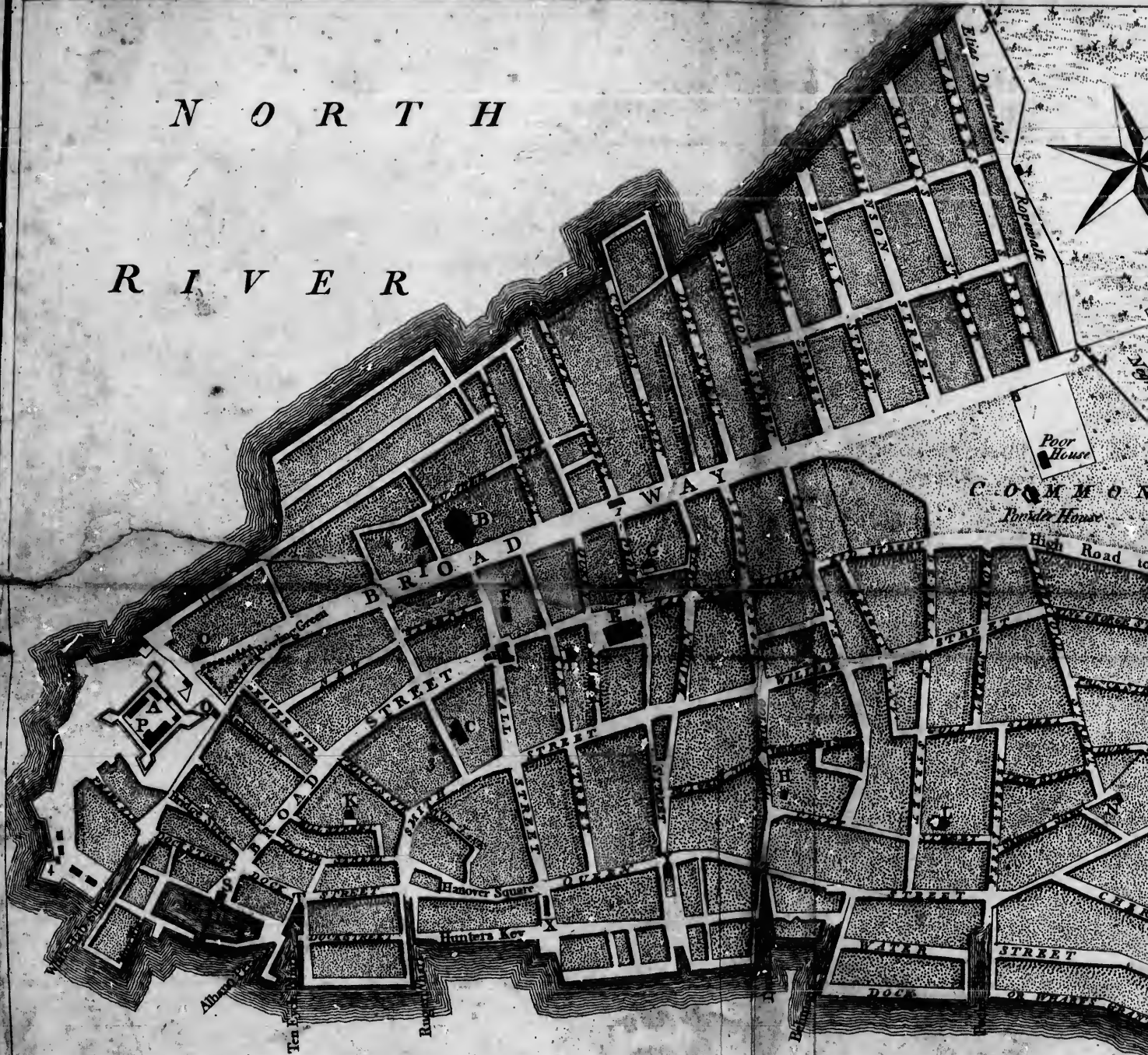
Reference Department.

THIS BOOK MUST NOT BE TAKEN OUT OF THE ROOM.

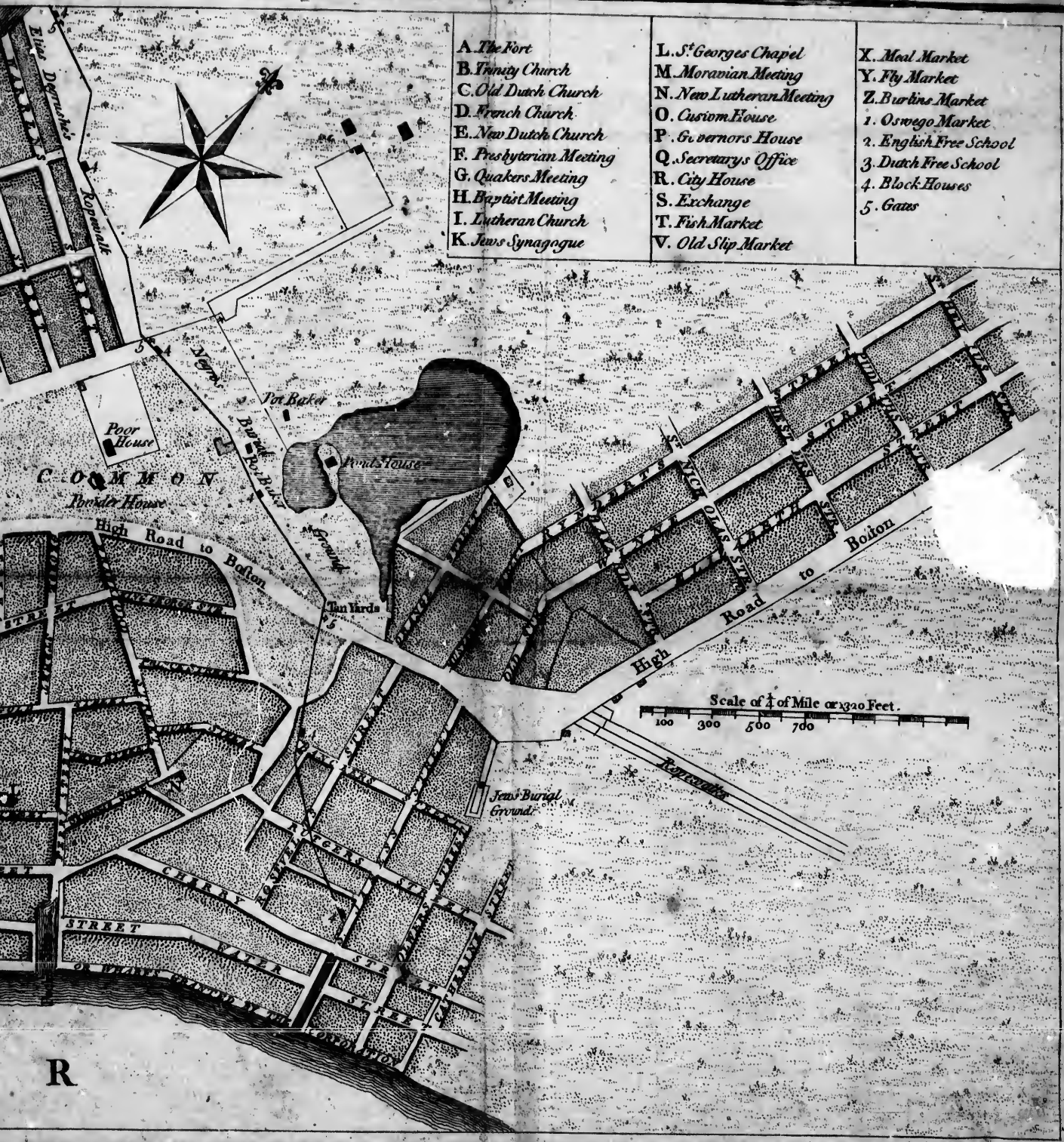
Feb 12th - 1913

A PLAN OF THE CITY OF NEW-YORK, REDUCED FROM

N O R T H
R I V E R

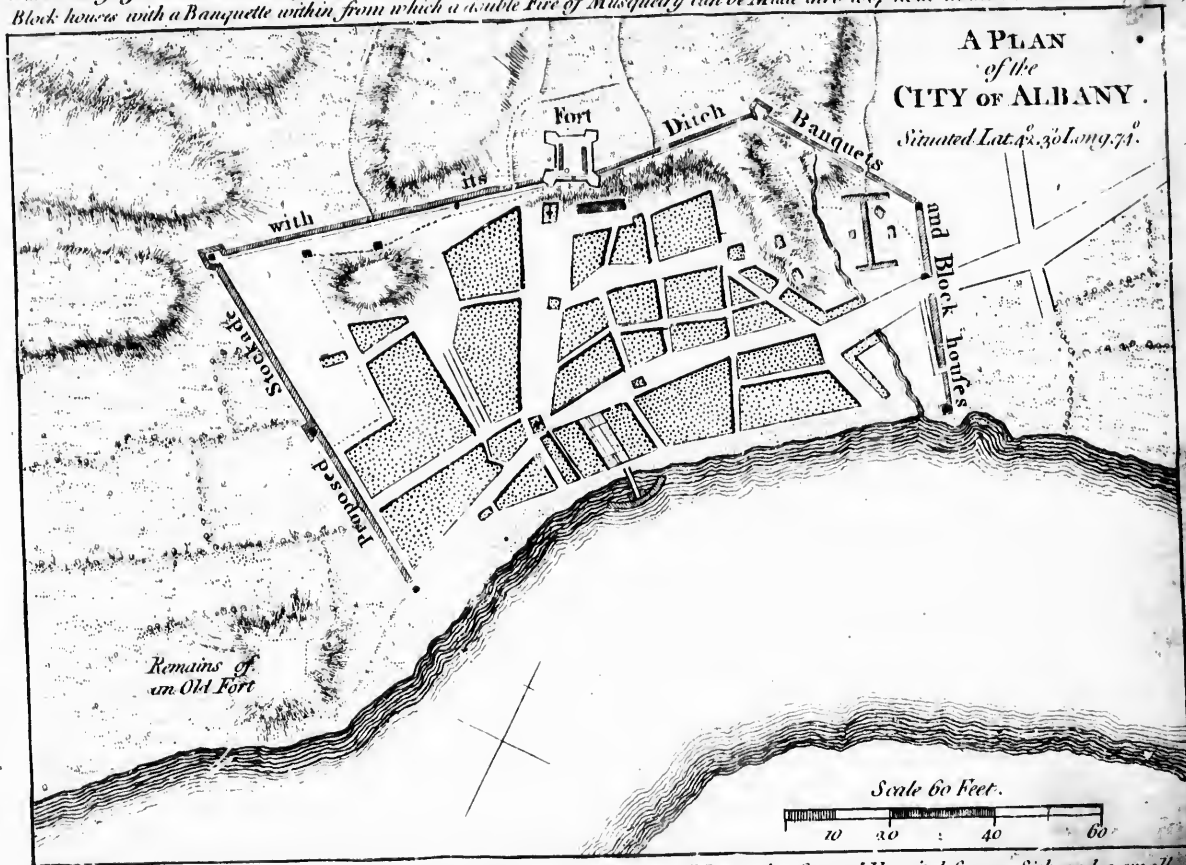


H A R B O U R



R

With a Design for the better securing it by altering the ancient form of its Stockade adding a Ditch in Front defended by a Number of Block houses with a Banquette within from which a double Fire of Musquetry can be Made thro loop holes in the Stockade.



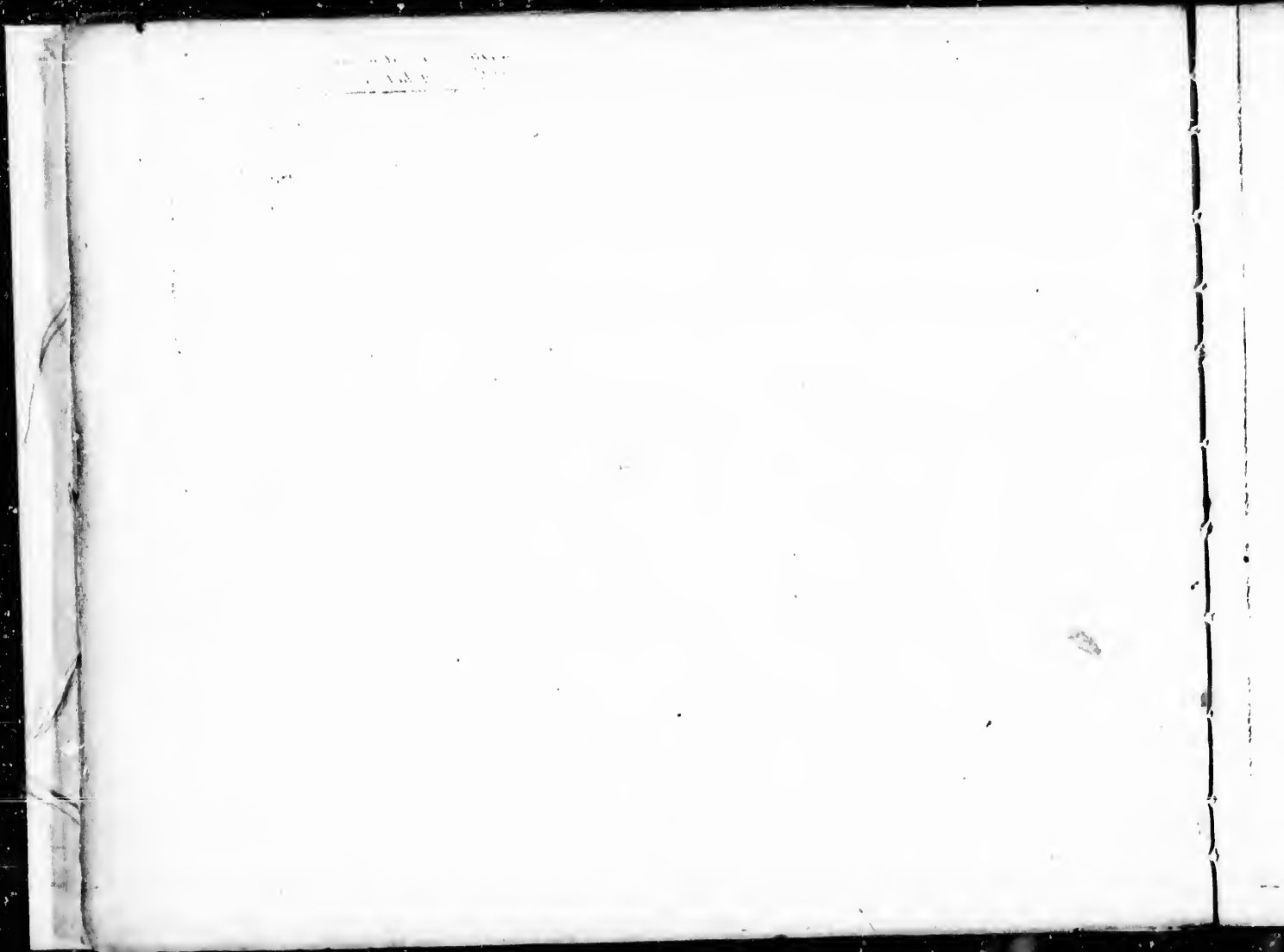
**A PLAN
of the
CITY OF ALBANY.**

Situated Lat. 42. 30 Long. 74.

*Remains of
an Old Fort*

Scale 60 Feet.

Also a Design for a Magazine for Provisions, Barracks for to Complement a ... Men with a General Hospital for 400 Sick and a small Quay for the conveniency of Loading & Unloading the Vessels which will also serve for a Battery for 2 Guns to Command the River



**PLAN of the TOWN
and FORTIFICATIONS
of
MONTREAL
or VILLE MARIE
in CANADA.**



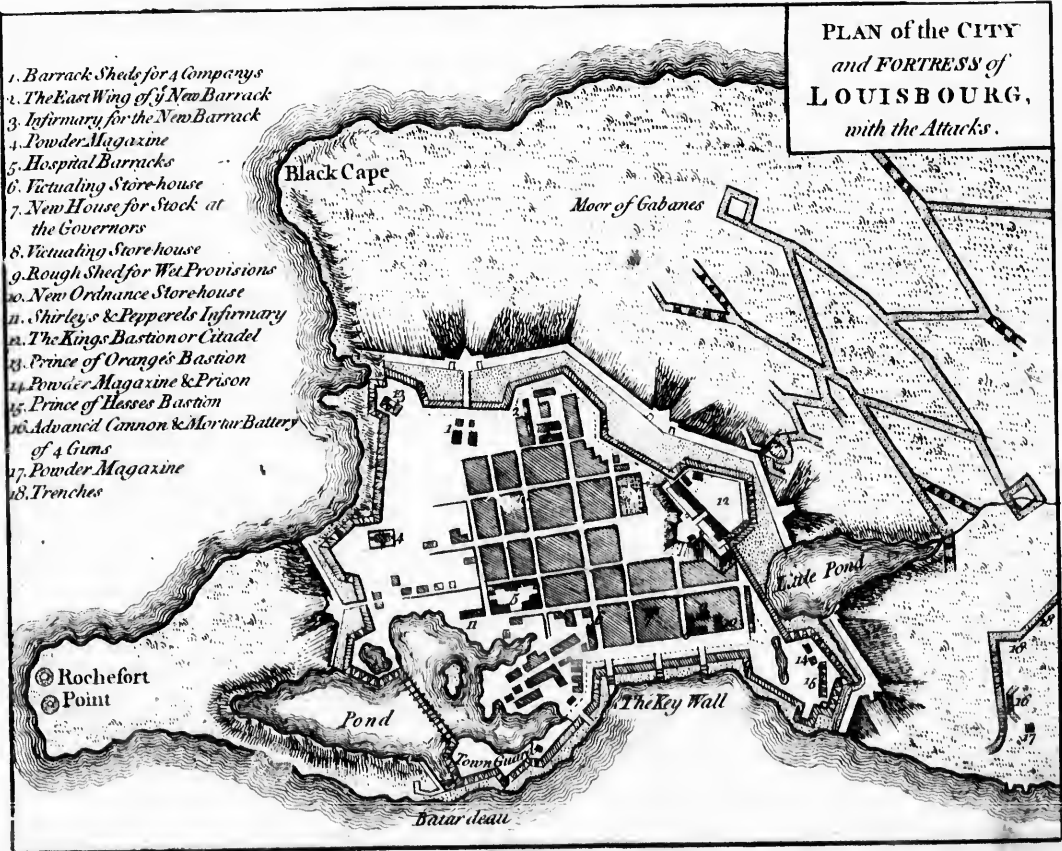
- A. A Dry Ditch about 8 Feet deep
- B.
- C.
- D. The Fort only a Cavalier without a Parapet
- E. Recollets Convent Gardens
- F. The Seminary
- G. The Parish Church
- H. The Nunnery Hospital
- I. The Powder Magazine
- K. Sisters of the Congregation and Garden
- L. The Jesuites Church and Convent
- M. A Small Chapel Burnt down
- N. The Arsenal and Yard for Canoos & Battaux





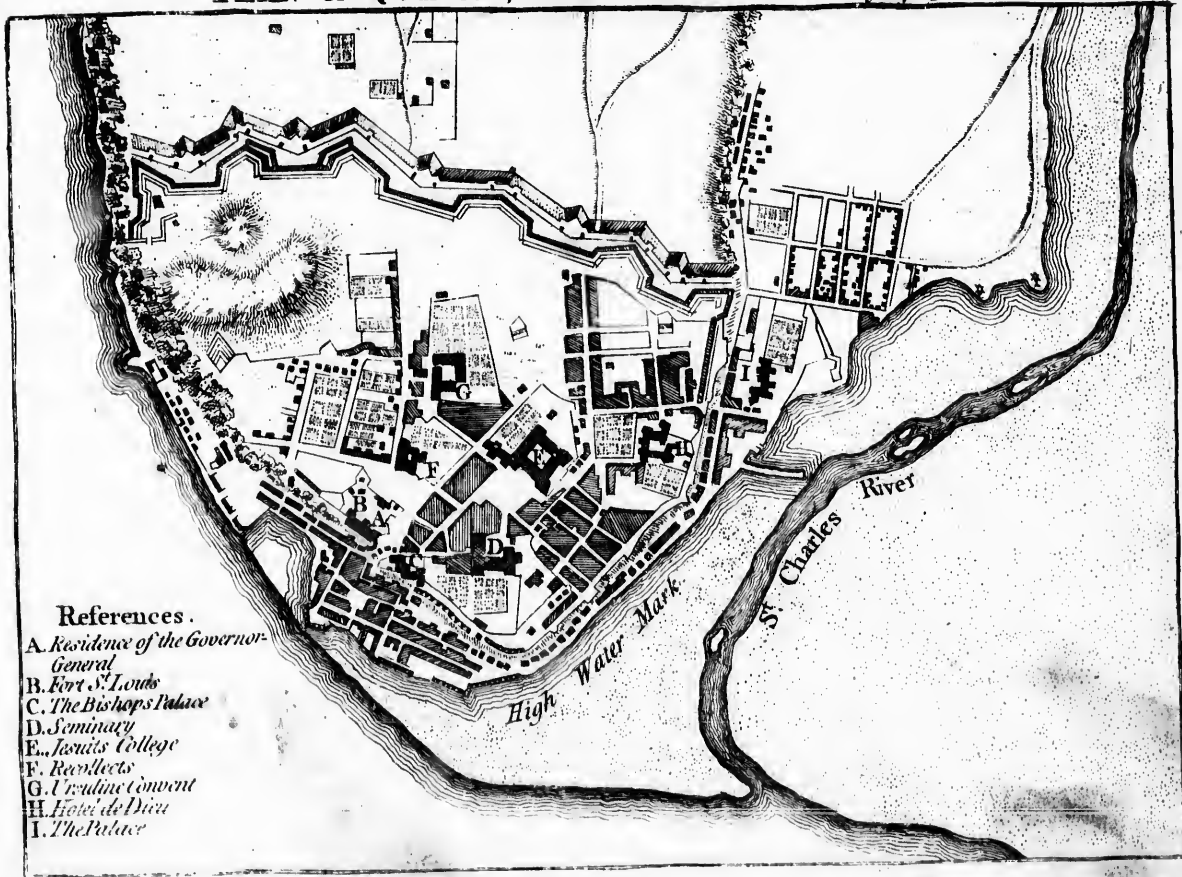
PLAN of the CITY
and FORTRESSES of
LOUISBOURG,
with the Attacks.

1. Barrack Sheds for 4 Companies
2. The East Wing of a New Barrack
3. Infirmary for the New Barrack
4. Powder Magazine
5. Hospital Barracks
6. Victualing Store house
7. New House for Stock at the Governours
8. Victualing Store house
9. Rough Shed for Wet Provisions
10. New Ordnance Store house
11. Shirley's & Pepperels Infirmary
12. The Kings Bastion or Citadel
13. Prince of Oranges Bastion
14. Powder Magazine & Prison
15. Prince of Hesses Bastion
16. Advanced Cannon & Mortar Battery of 4 Guns
17. Powder Magazine
18. Trenches

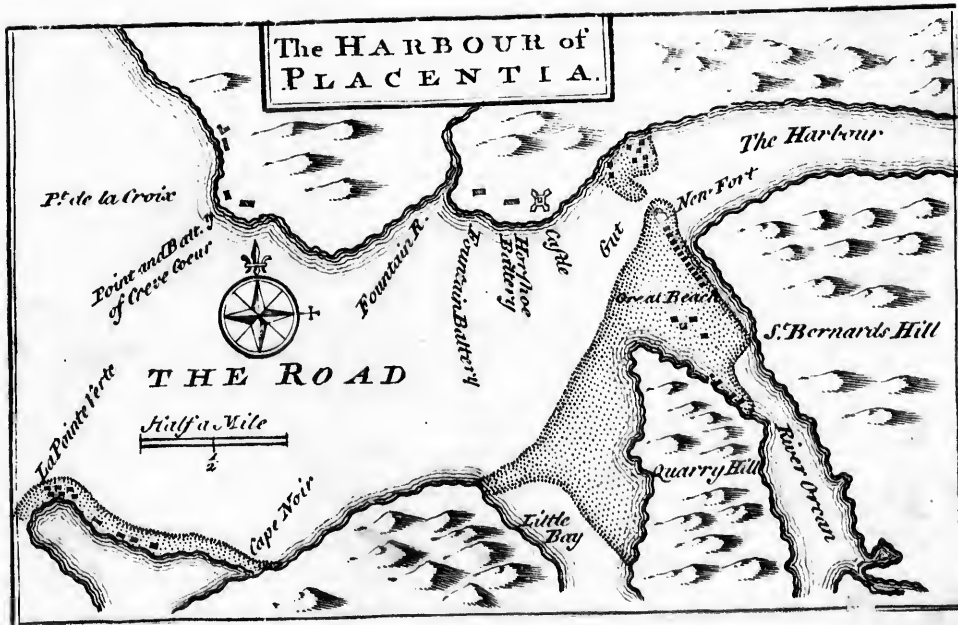




PLAN OF QUEBEC, Reduc'd from an Actual Survey 1763.



- References.
- A. Residence of the Governor-General
 - B. Fort St. Louis
 - C. The Bishop's Palace
 - D. Seminary
 - E. Jesuits College
 - F. Recollects
 - G. Ursuline Convent
 - H. Hotel de Dieu
 - I. The Palace

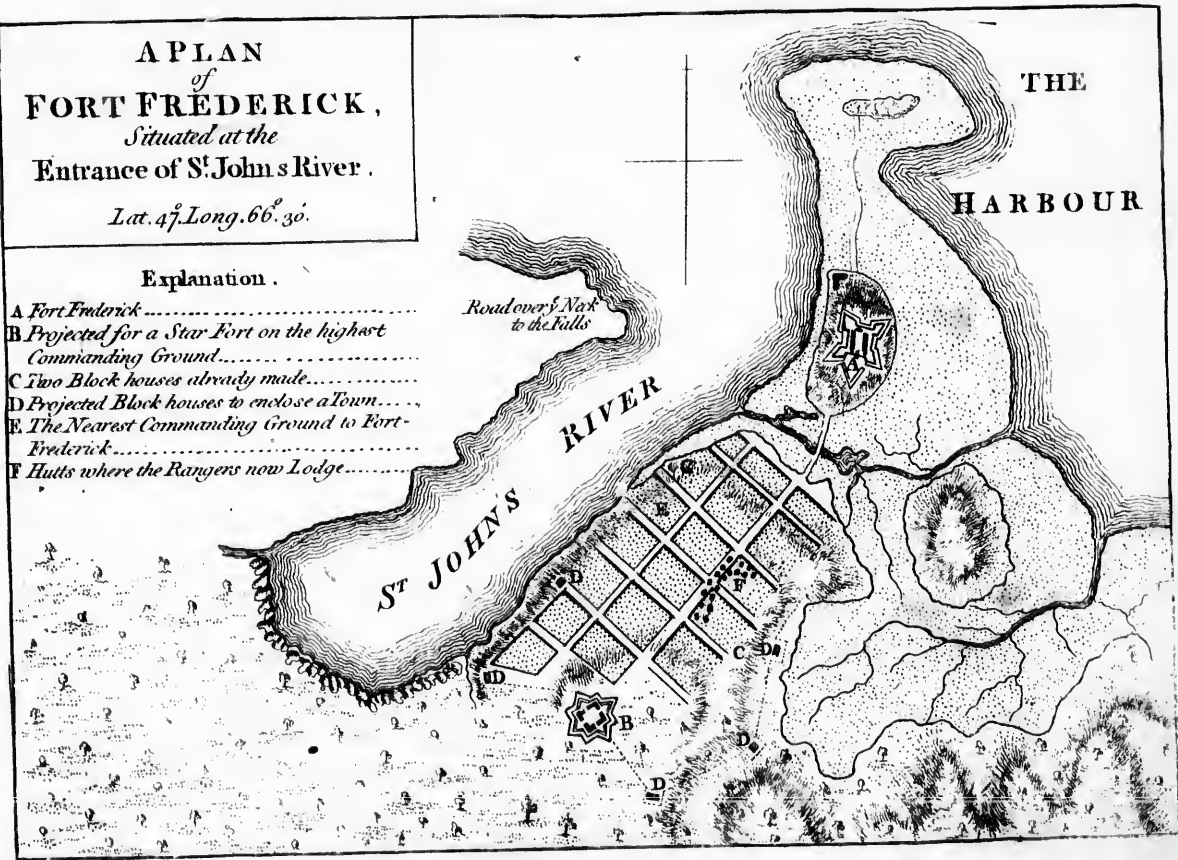


A PLAN
of
FORT FRÉDERICK,
Situated at the
Entrance of St. John's River.

Lat. 47° Long. 66° 30'.

Explanation .

- A Fort Emderick.....
- B Projected for a Star Fort on the highest
Commanding Ground.....
- C Two Block houses already made.....
- D Projected Block houses to enclose a town.....
- E The Nearest Commanding Ground to Fort-
Frederick.....
- F Huts where the Rangers now Lodge.....





A PLAN of the Town

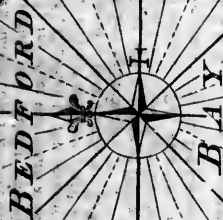


n settlements Stores.
I Provisions Stores.

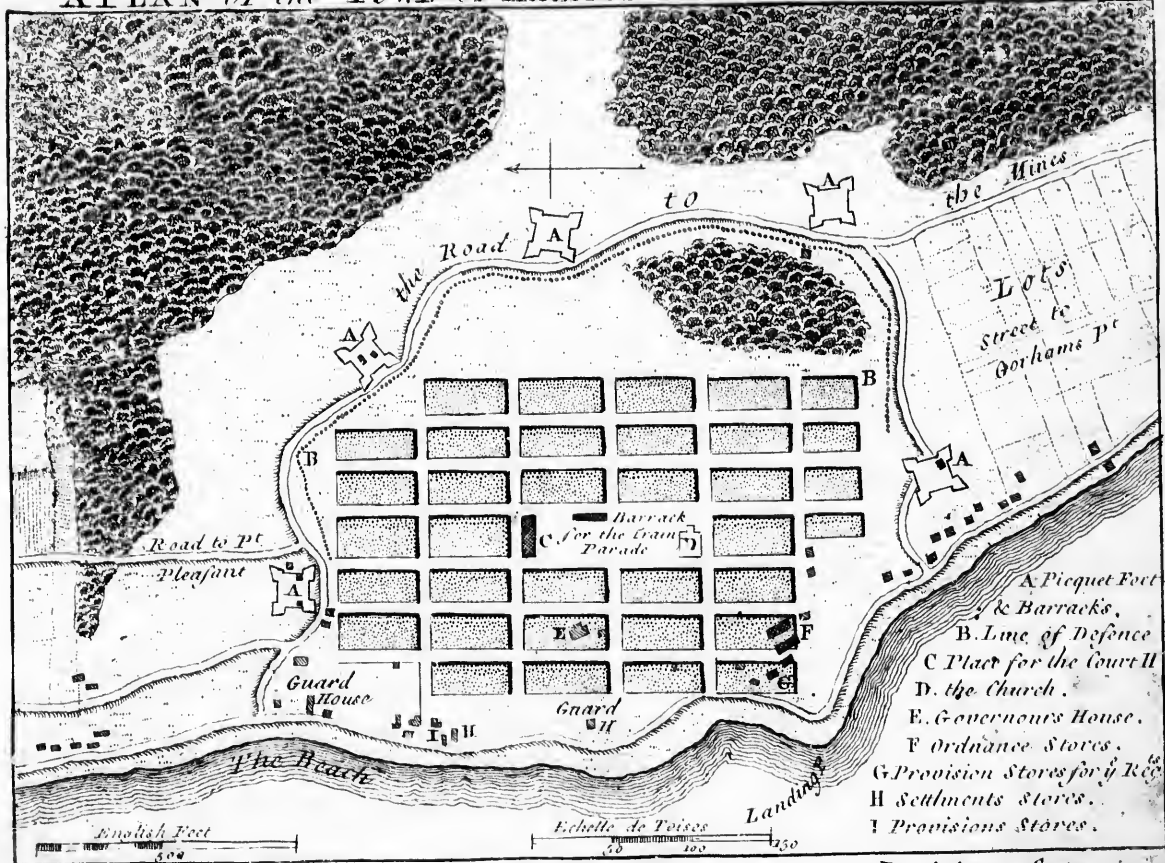
P. Andrews. Sculp.

APLAY of the
TOWN & HARBOUR
of HALIFAX in
NOVA SCOTIA

A Scale of a Mile

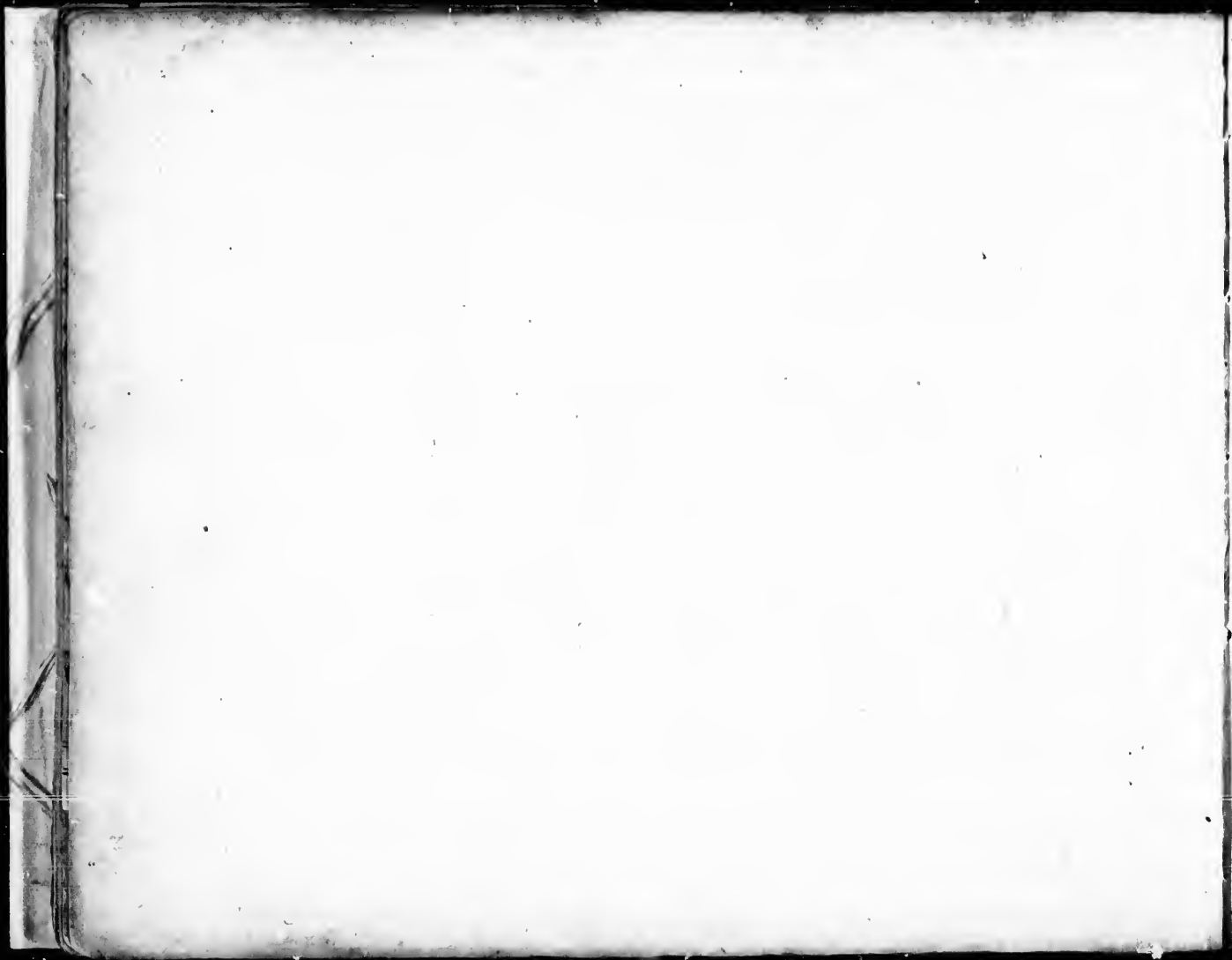


A PLAN of the TOWN of HALIFAX in NOVA SCOTIA



P. Andrews · Sculp

9



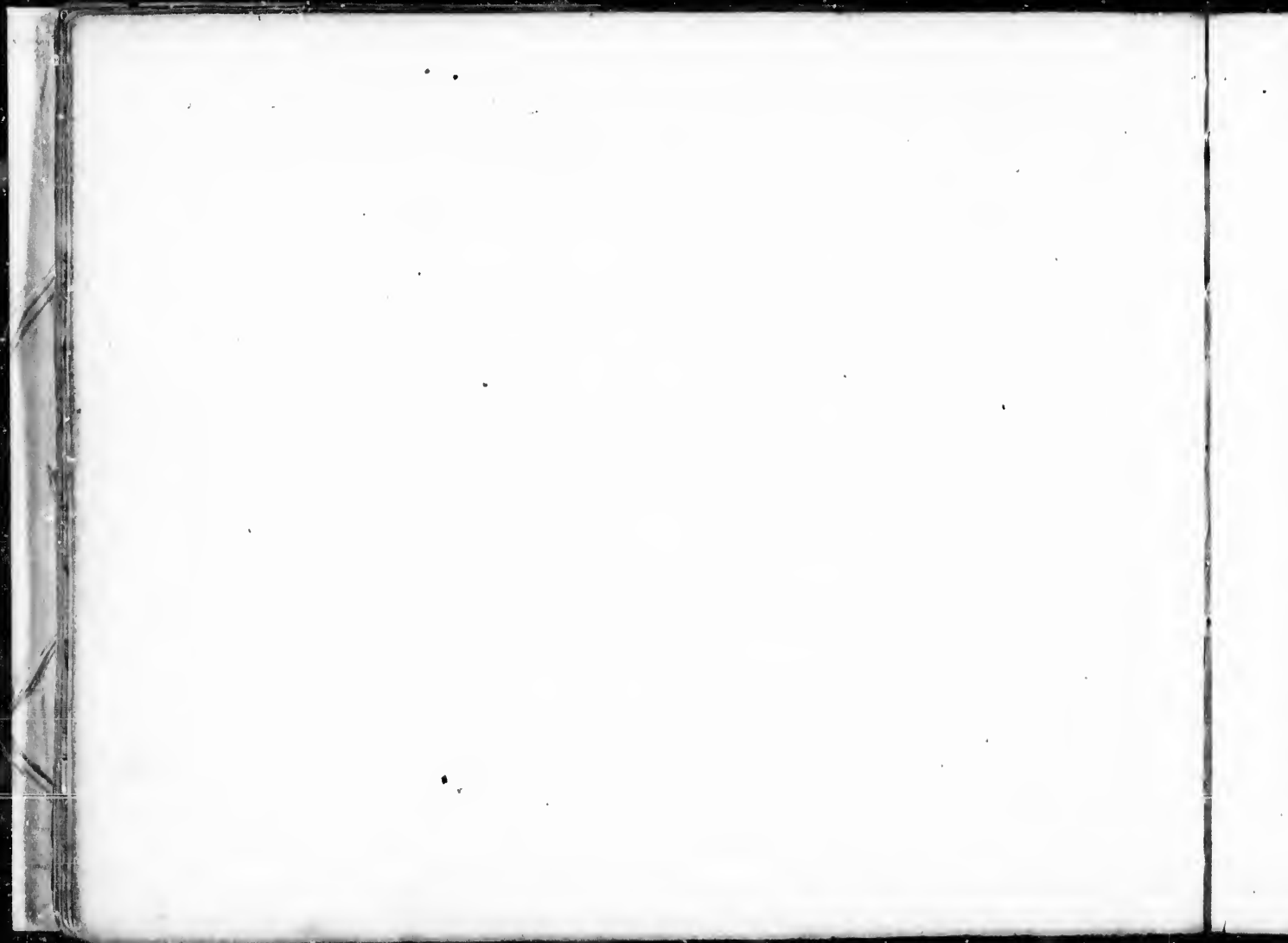
A PLAN of SCHENECTADY.

Situated Lat. 43. Long. 74. 30.

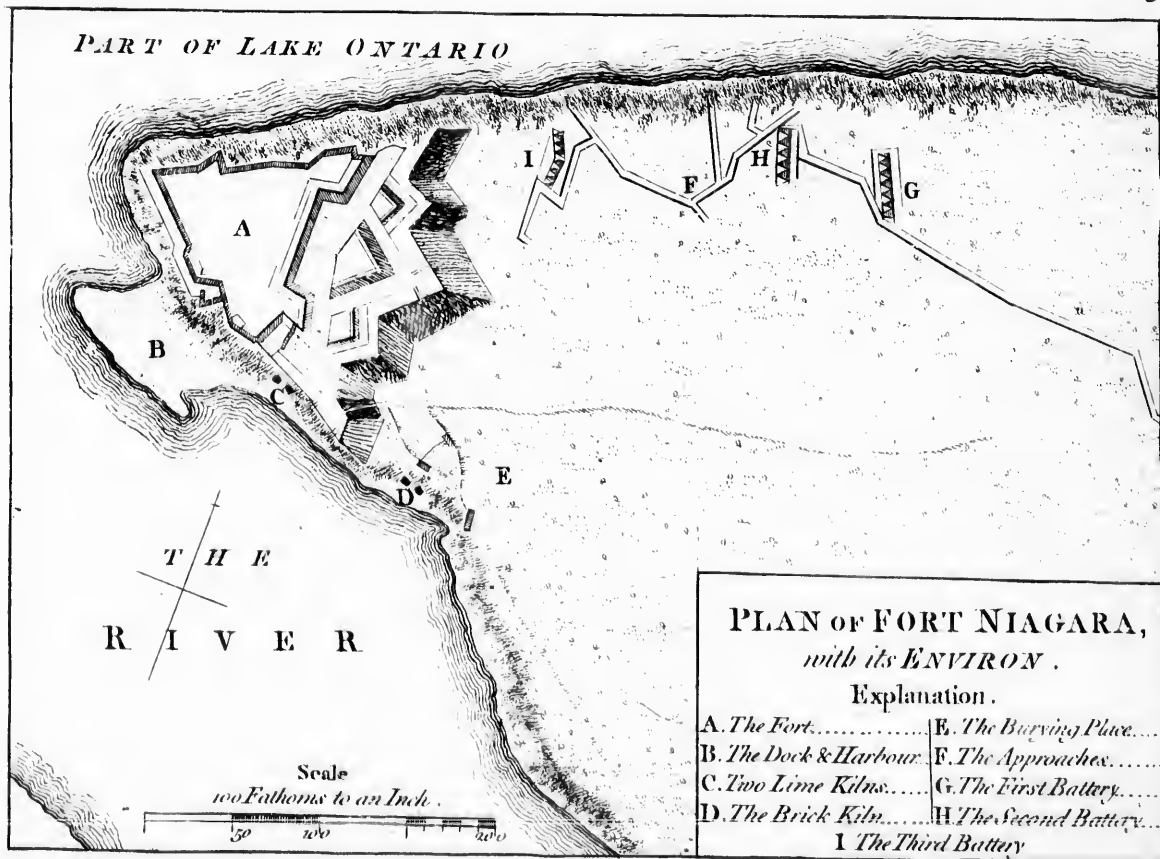
Scale of 200 Yards to an Inch
100 200 300 400 500 600 700 800 900 1000



- A. Schenectady
- B. Wooden fort with four Block houses for flankers
- C. Block houses to defend the Stockades
- D. Stockades planted round the Town
- E. The Nearest high Ground to S. W. in which is about 100 Yds from S. Stock
- F. Part of a line of an Emplacement thrown up and a facade Battery to show how such works are constructed
- G. Barnicks or Sheds where part of s^t Reg^t were Lodged last Winter
- The Boundary on each side of the River is pretty nearly on a Level - Except where it's mark'd otherwise on the Draught



PART OF LAKE ONTARIO



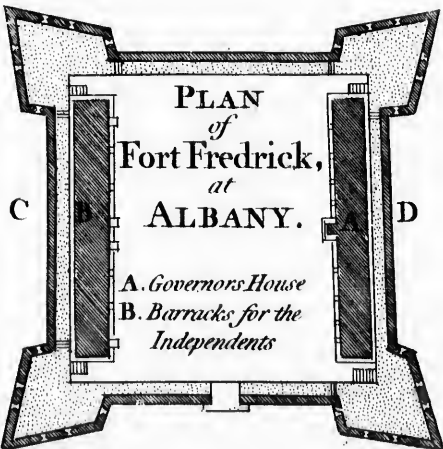
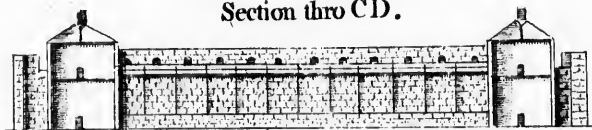
PLAN OF FORT NIAGARA,
with its ENVIRON.

Explanation.

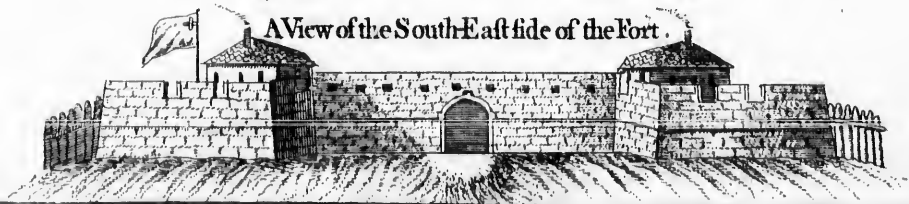
- | | |
|----------------------------|----------------------------|
| A. The Fort..... | E. The Burying Place..... |
| B. The Dock & Harbour..... | F. The Approaches..... |
| C. Two Lime Kilns..... | G. The First Battery..... |
| D. The Brick Kiln..... | H. The Second Battery..... |
| | I. The Third Battery..... |

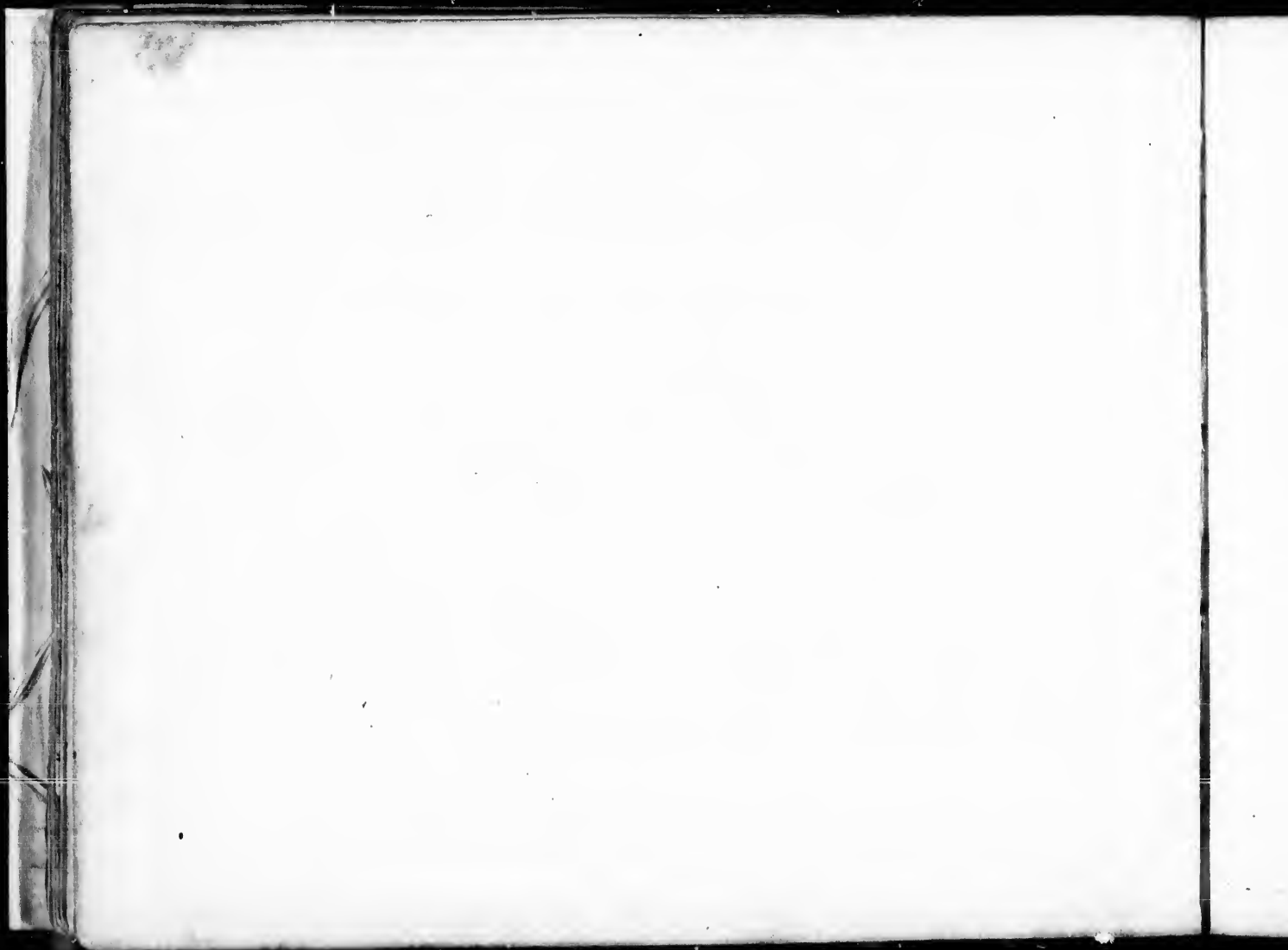


Section thro CD.

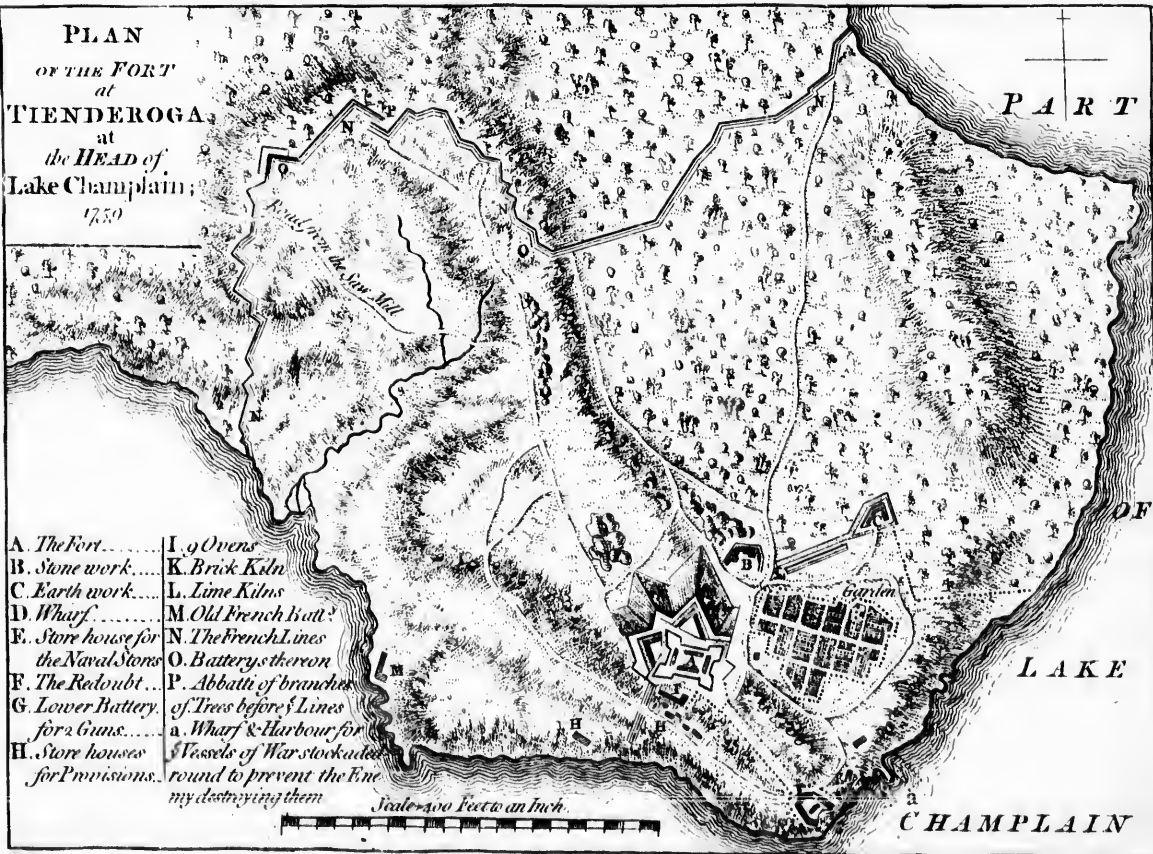


A View of the South-East side of the Fort.





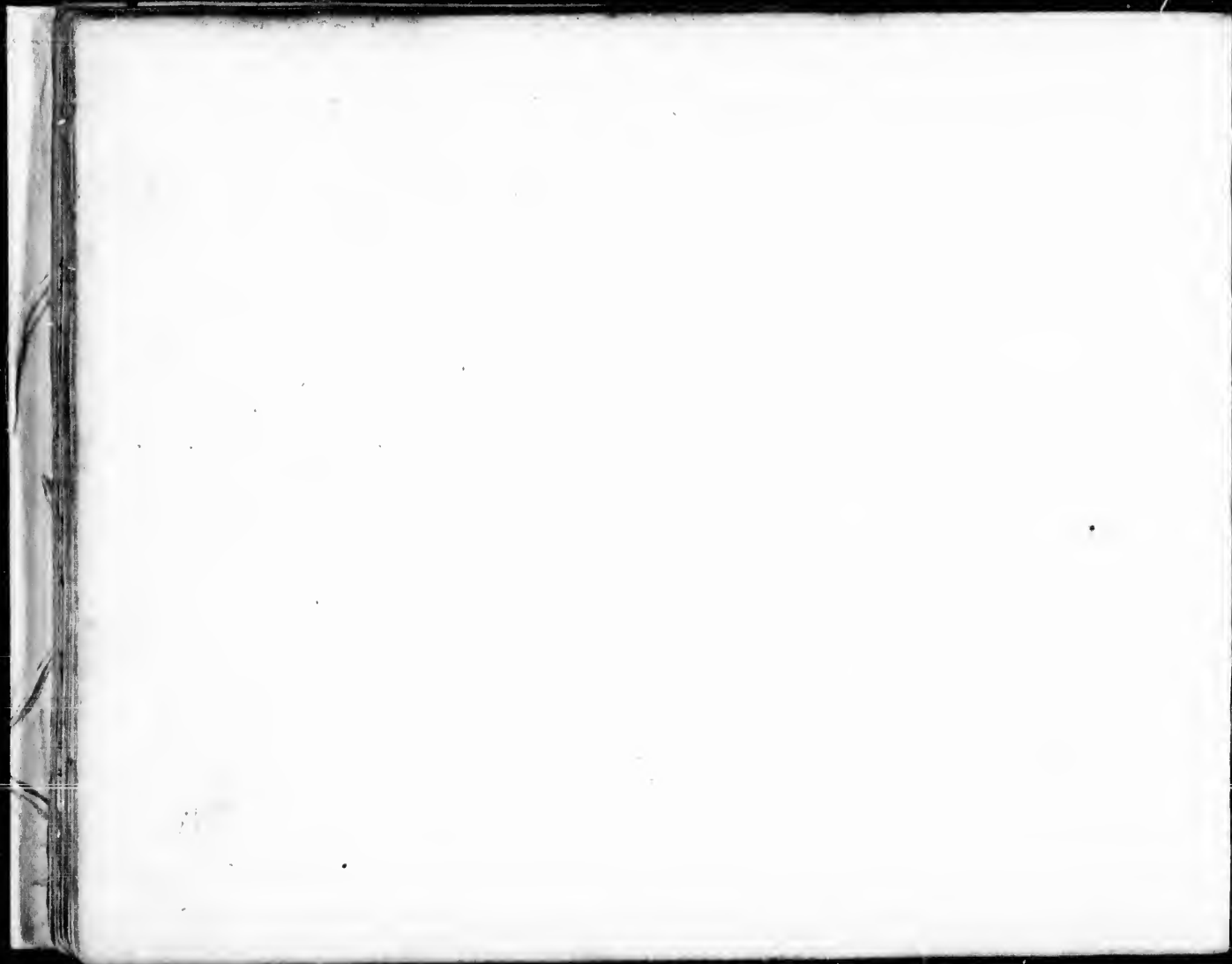
PLAN
OF THE FORT
at
TIENDEROGA
at
the HEAD of
Lake Champlain;
 1759



- | | |
|--|--|
| A. The Fort..... | I. 9 Ovens |
| B. Stone work..... | K. Brick Kilsn |
| C. Earth work..... | L. Lime Kilns |
| D. Wharf..... | M. Old French Boat |
| E. Store house for
the Naval Stores | N. The French Lines |
| F. The Redoubt... | O. Battery thereon |
| G. Lower Battery
for 2 Guns..... | P. Abbattis of branches
of Trees before Lines |
| H. Store houses
for Pmvisions. | a. Wharf & Harbour for
Vessels of War stockaded
round to prevent the Ene
my destroying them |

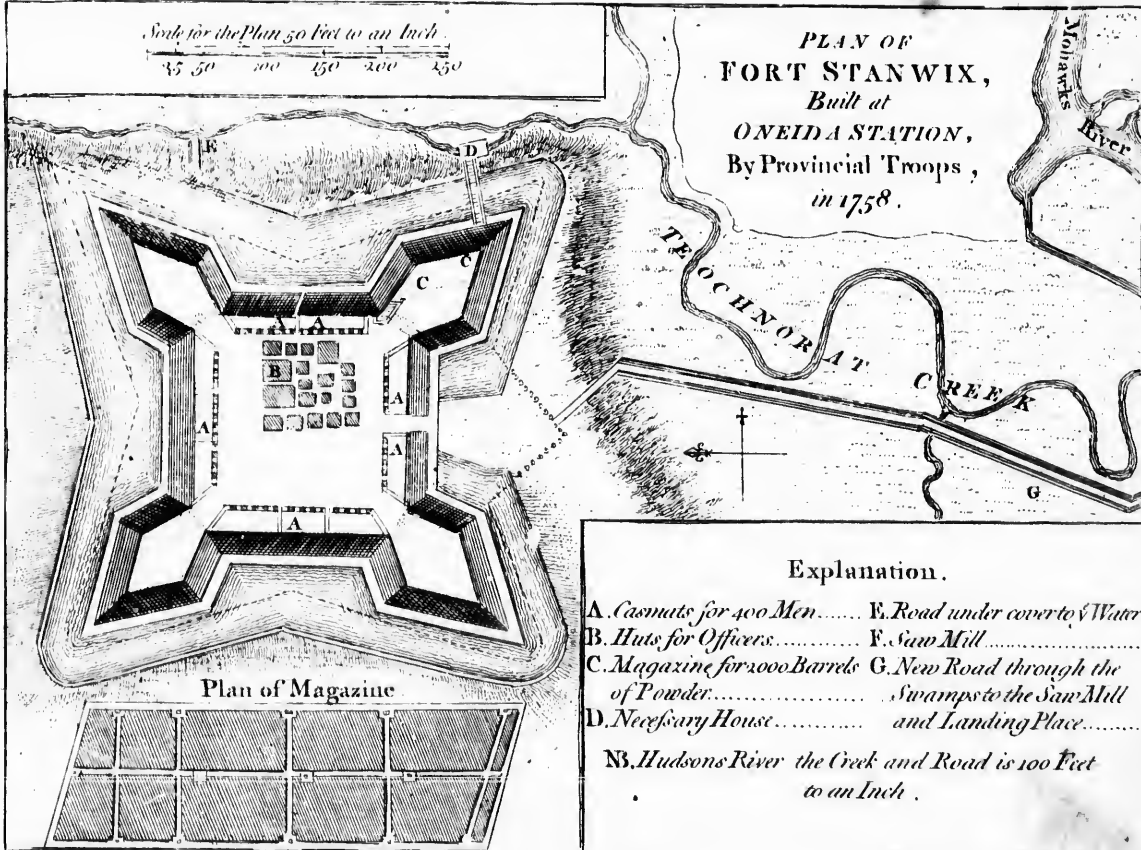
Scale 400 Feet to an Inch





Scale for the Plan 50 Feet to an Inch
45 50 100 150 200 250

PLAN OF
FORT STANWIX,
Built at
ONEIDA STATION,
By Provincial Troops,
in 1758.



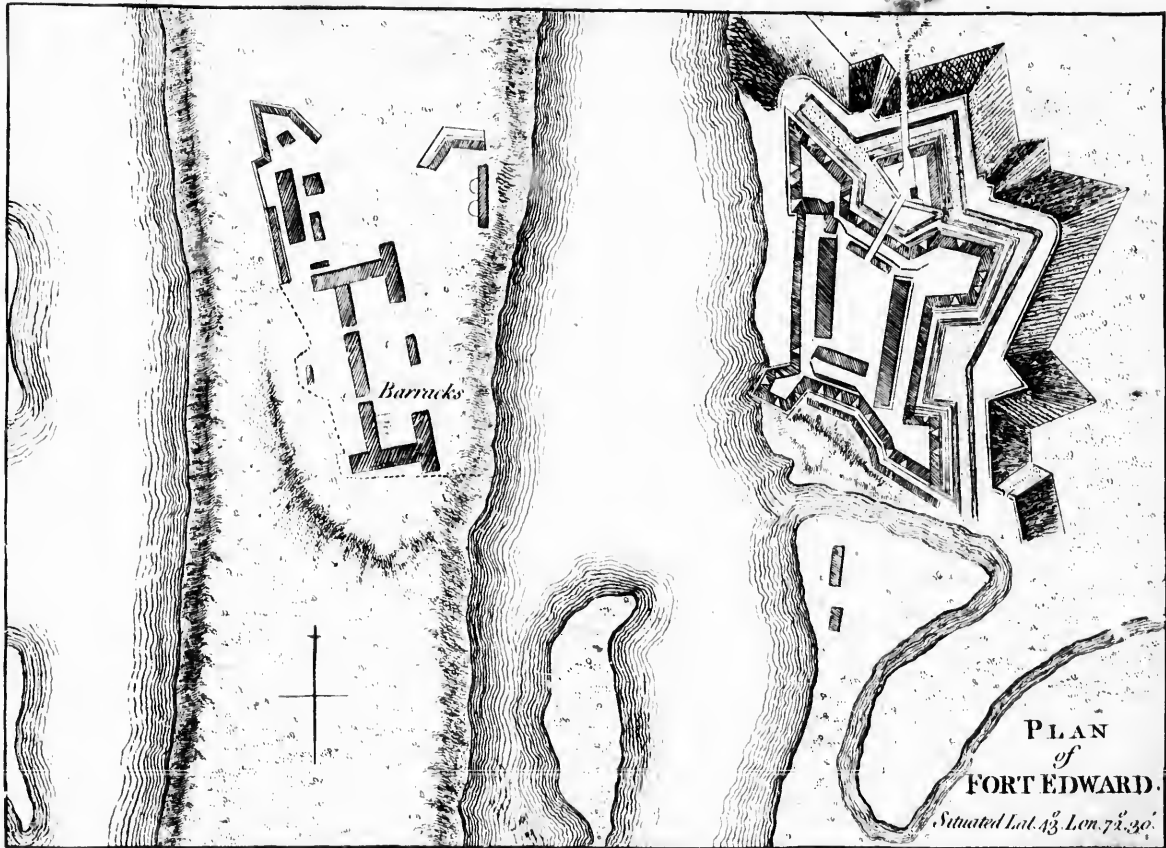
Plan of Magazine

Explanation.

- A. Casemate for 400 Men.....
- B. Huts for Officers.....
- C. Magazine for 2000 Barrels of Powder.....
- D. Necessary House.....
- E. Road under cover to Water.....
- F. Saw Mill.....
- G. New Road through the Swamps to the Saw Mill and Landing Place.....

NB. Hudsons River the Creek and Road is 100 Feet to an Inch.





PLAN
of
FORT EDWARD.

Situated Lat. 43. Lon. 72. 30.

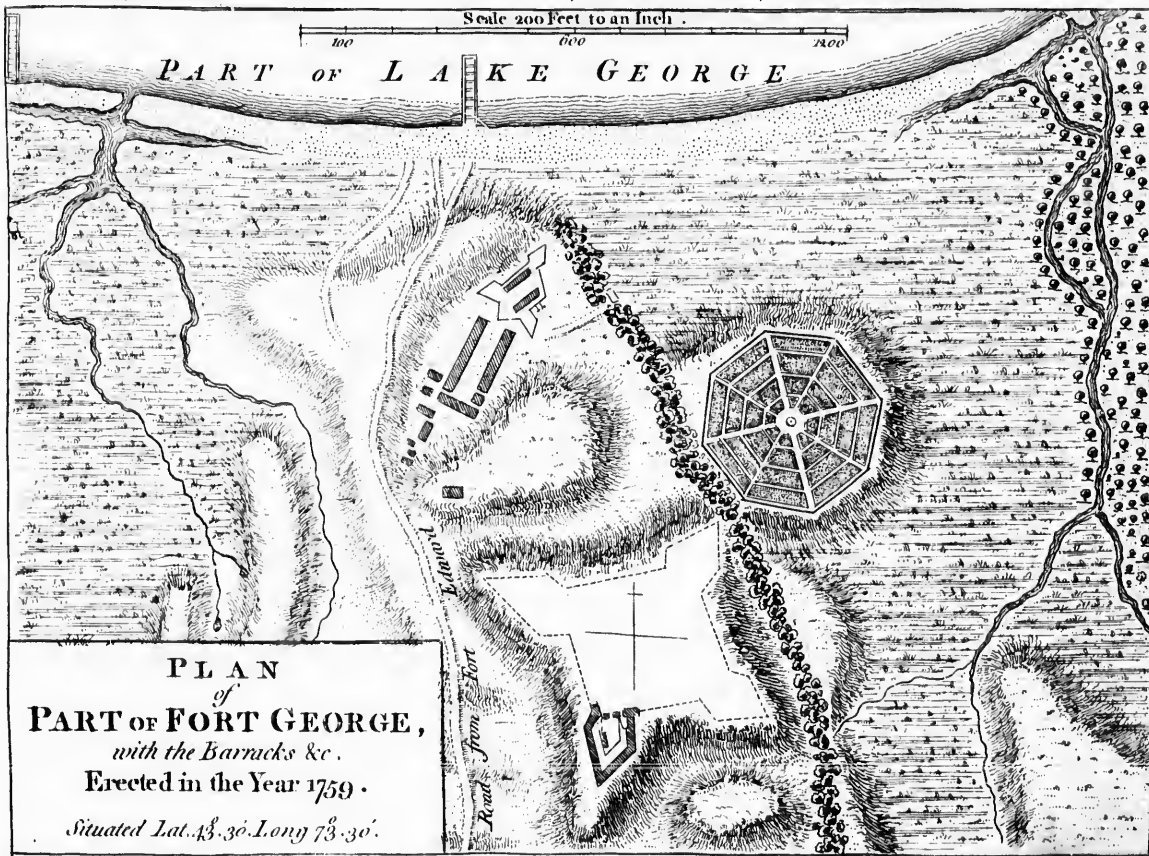
A. For
other w



P

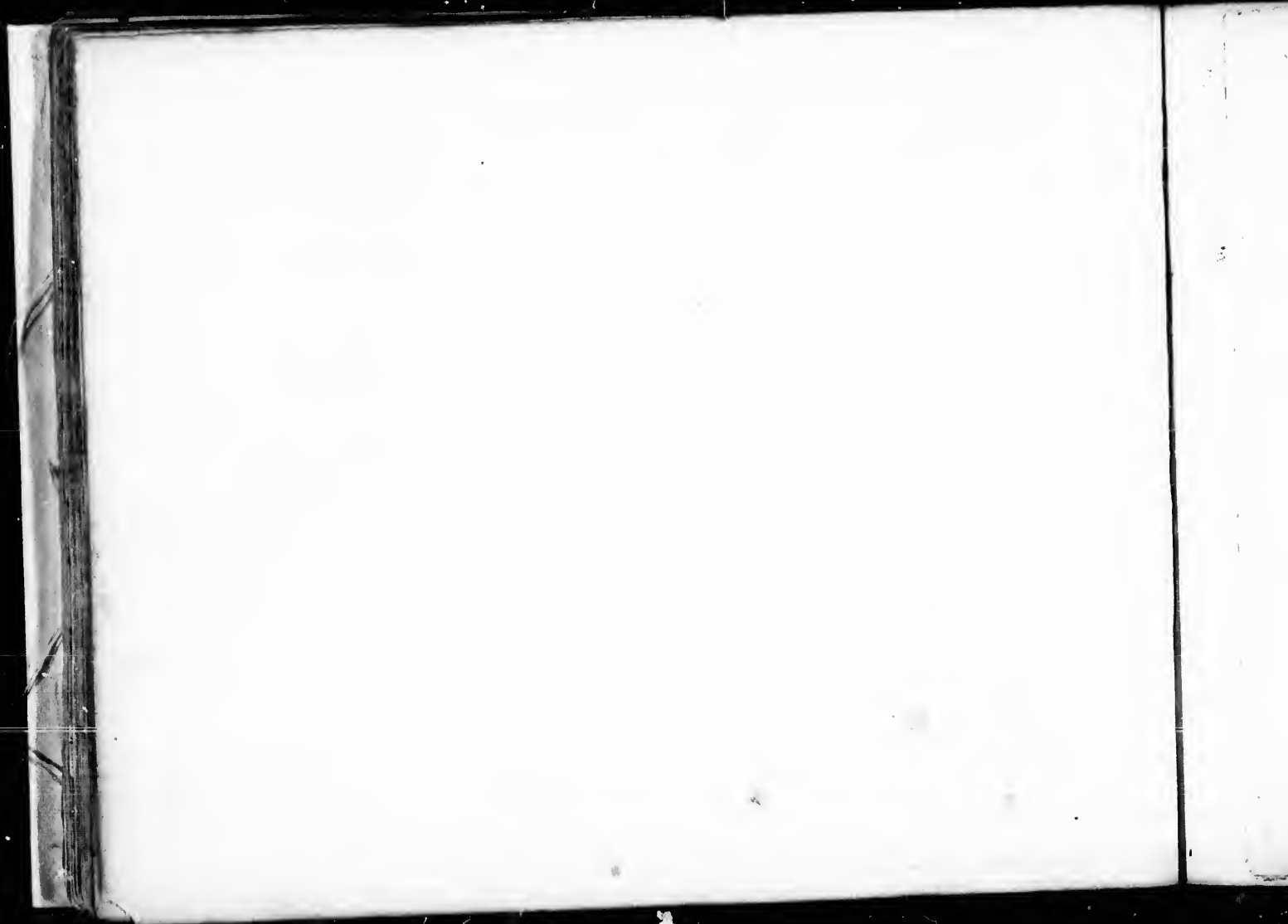
A. Fort shewing what was finished. 1. Officers Barracks. 2. Soldiers Barracks. 3. Powder Magazine. B. Stockaded Fort erected to serve during the time the other was Building. Guard Room the Kitchen. 6. 6. Store houses. 7. Saw Mill in the Swamp to the south westward.

Scale 200 Feet to an Inch.



PLAN
of
PART OF FORT GEORGE,
with the Barracks &c.
Erected in the Year 1759.

Situated Lat. 43. 30. Long 73. 30.





PLAN of the NARROWS
about 10 Miles from
NEW YORK.

A. B. C. D. E. F. are Retrenched Batterys containing in the whole 90 Guns calculated to keep a continual Fire of 6 Guns at a Time as it is the only Channel that leads up to New York it is very necessary for its Preservation this Work should be done.

Symosons Wharf
 Symosons Barn

PART OF
 BATTERY C 15 Guns
 BATTERY B 20 Guns

Signal house proposed to receive Signals from Sandy Hook and return them to New York
Alarm Beacons which serves at present

HATED ISLAND

C H A N N E L

O F

N E W Y O R K

BATTERY A 15 Guns
 Wharf
 Dennysses house

BATTERY D 20 Guns

Cartel yows Wharf

BATTERY E 20 Guns

1000 2000 3000 4000
 1000 feet to an Inch.

RET

FO

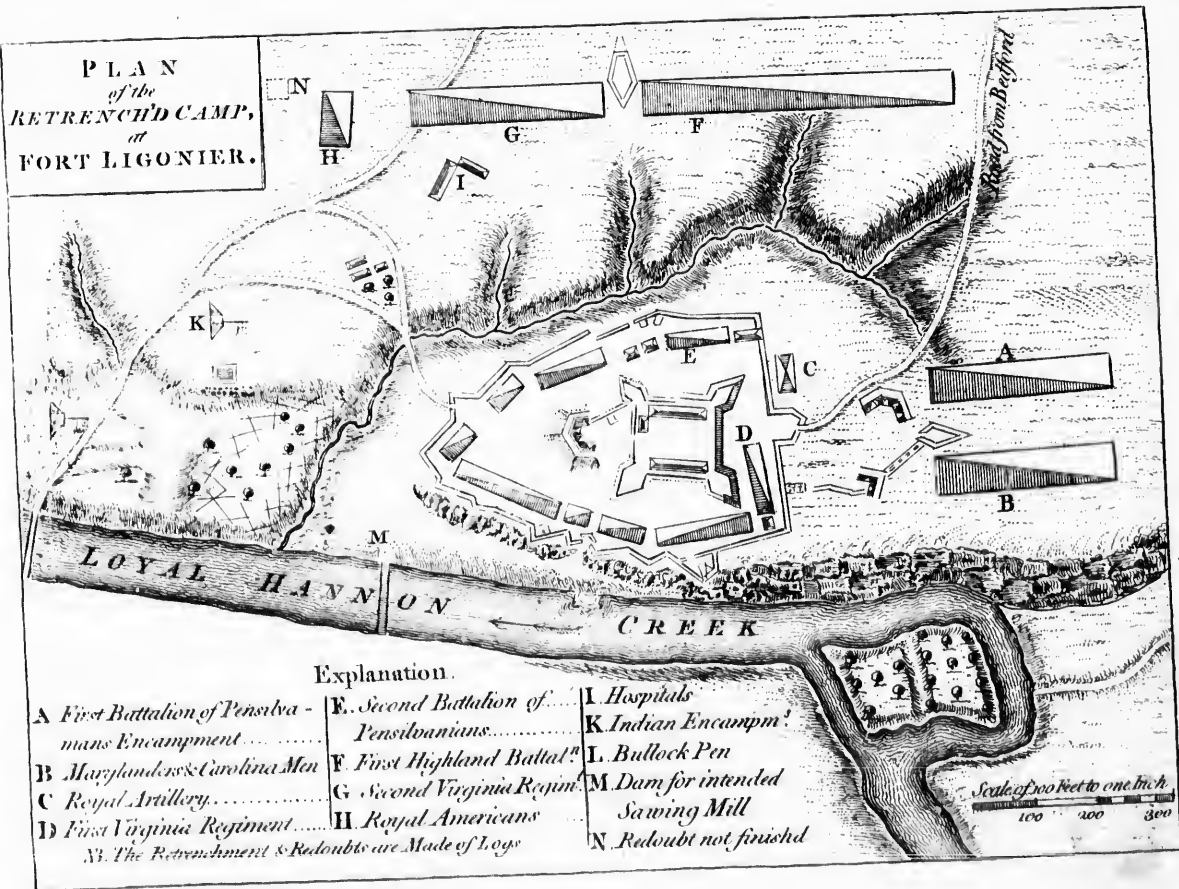
A

B

C

D

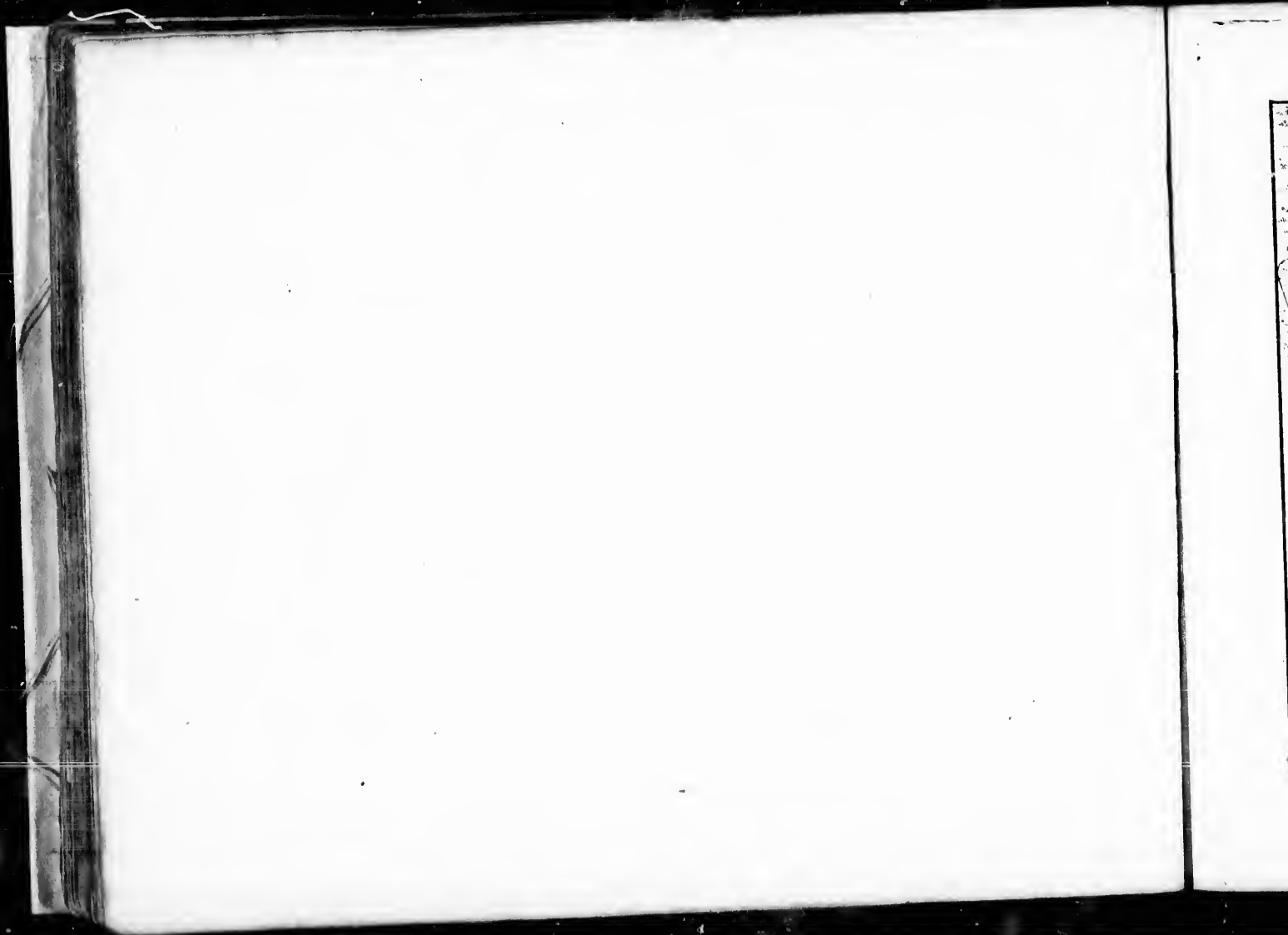
PLAN
of the
RETRENCH'D CAMP,
at
FORT LIGONIER.



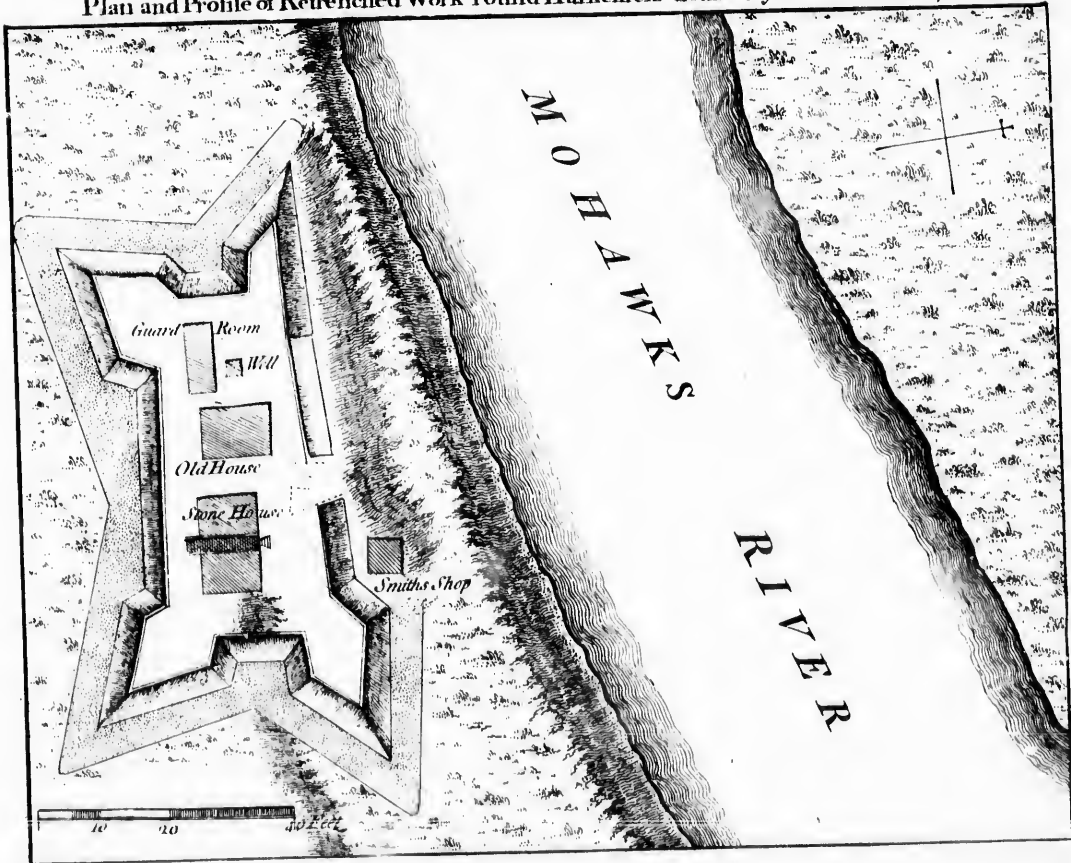
Explanation.

- | | | |
|---|---------------------------------------|--------------------------------|
| A First Battalion of Pennsylvania's Encampment | E. Second Battalion of Pennsylvanians | I Hospitals |
| B Marylanders & Carolina Men | F First Highland Battalion | K Indian Encampment |
| C Royal Artillery | G Second Virginia Regiment | L Bullock Pen |
| D First Virginia Regiment | H Royal Americans | M Dam for intended Sawing Mill |
| N. The Retrenchment & Redoubts are Made of Logs | | N Redoubt not finished |

Scale of 300 Feet to one Inch
100 200 300

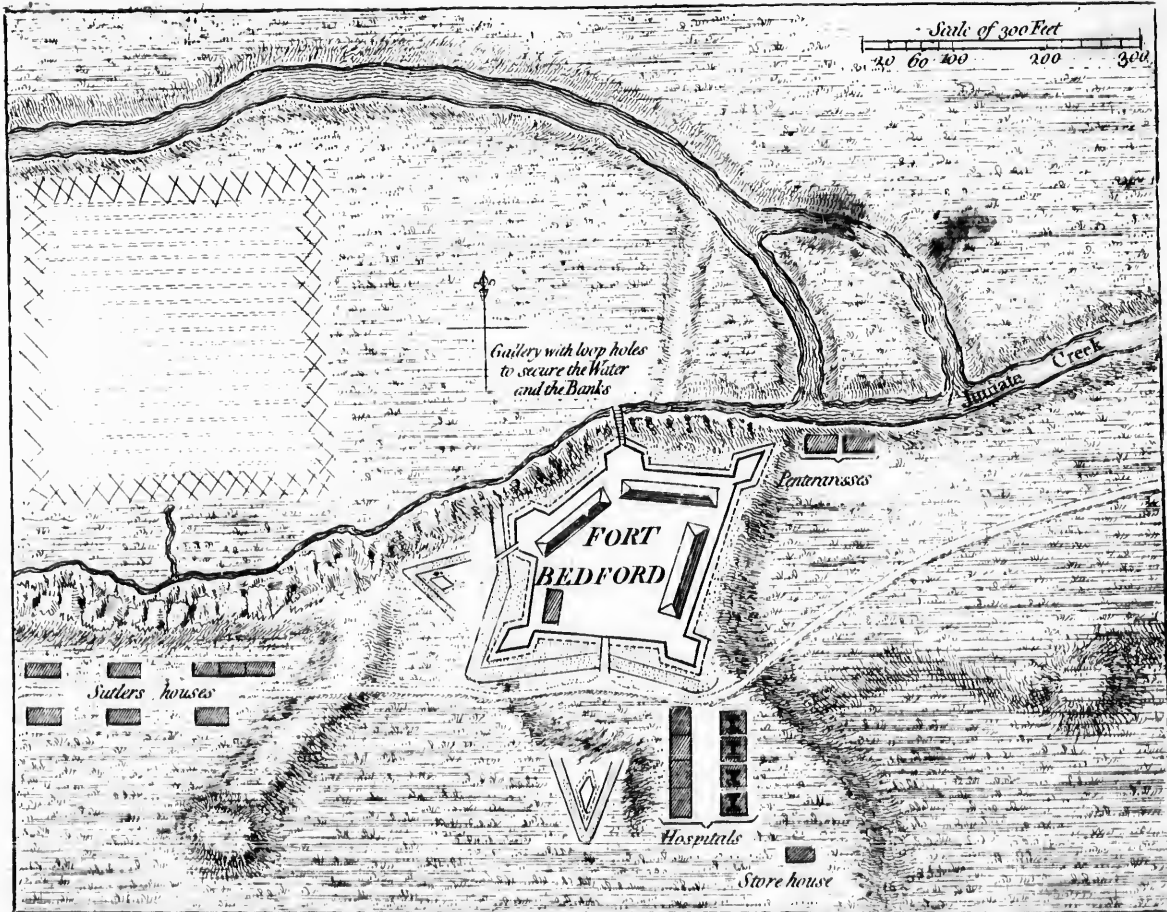


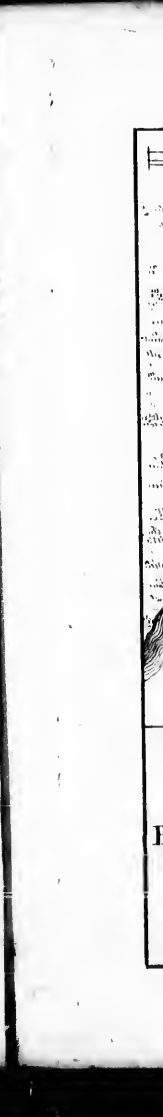
Plan and Profile of Retrenched Work round Harkemeis house at German Flats 1756

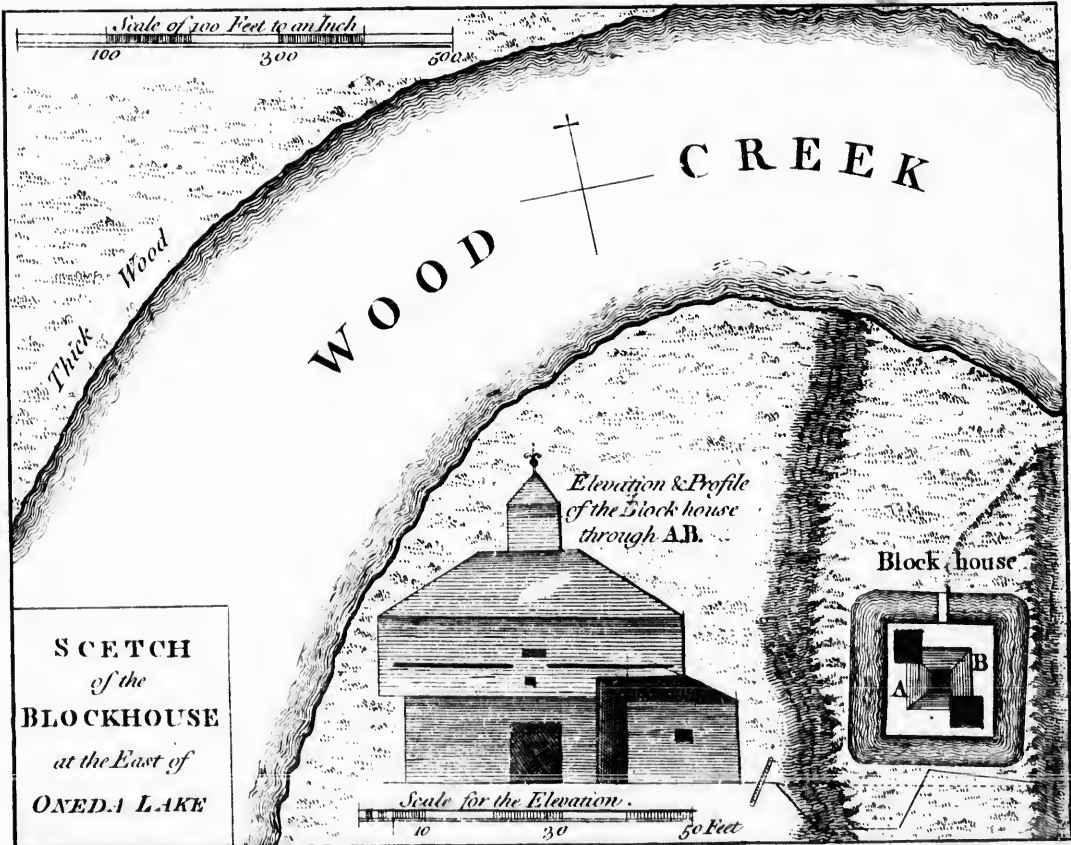


Handwritten text and diagrams on the right margin of the page, including a vertical column of text and several small diagrams or sketches.









SCETCH
of the
BLOCKHOUSE
at the East of
ONEDA LAKE

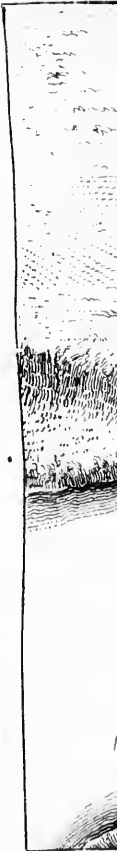
*Elevation & Profile
of the Block house
through AB.*

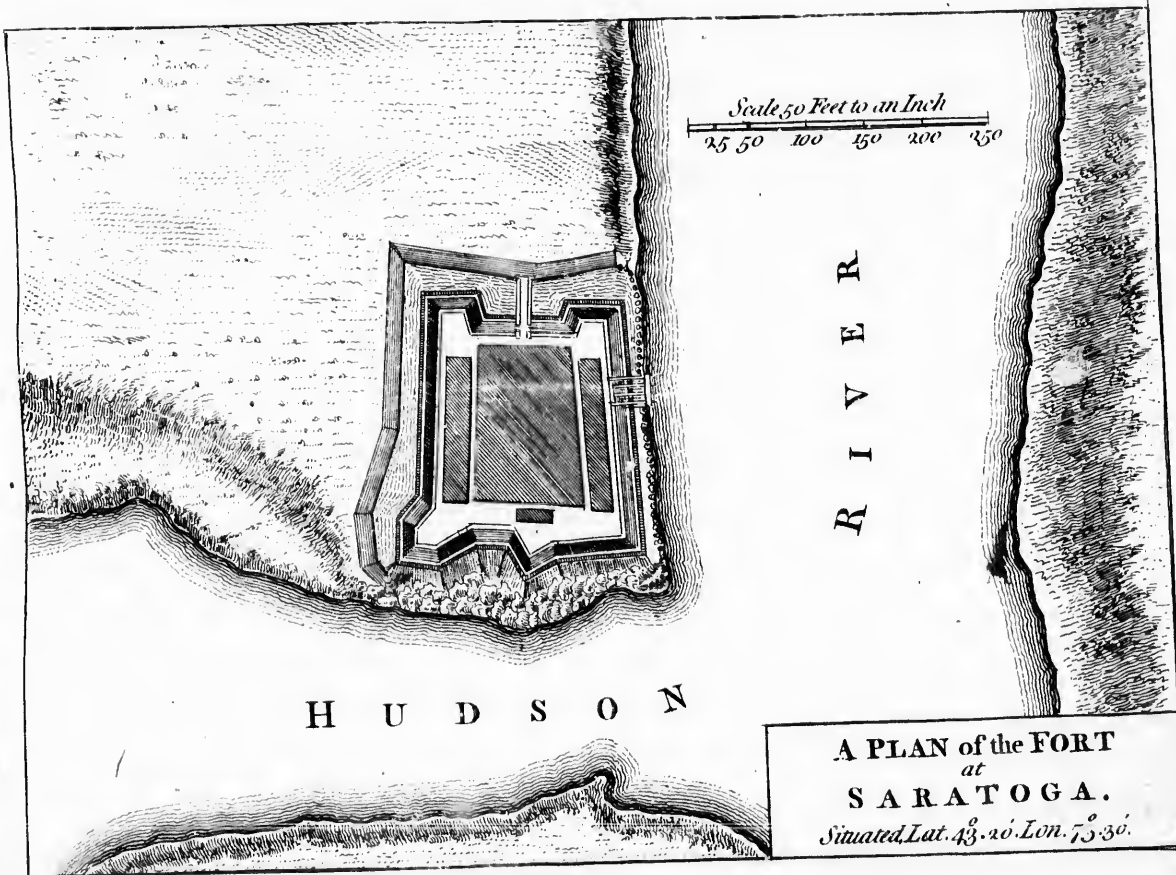
Block house

Scale for the Elevation.

Scale of 100 Feet to an Inch
100 300 500

10 30 50 Feet





H U D S O N

R I V E R

Scale 50 Feet to an Inch
25 50 100 150 200 250

A PLAN of the FORT
at
SARATOGA.
Situated Lat. 43. 20. Lon. 73. 30.

A.

BZ

F

L

Small vertical text in a decorative border

P

P

P

P

P

P

P

P

P

P

P

P

P

P

P

P

P

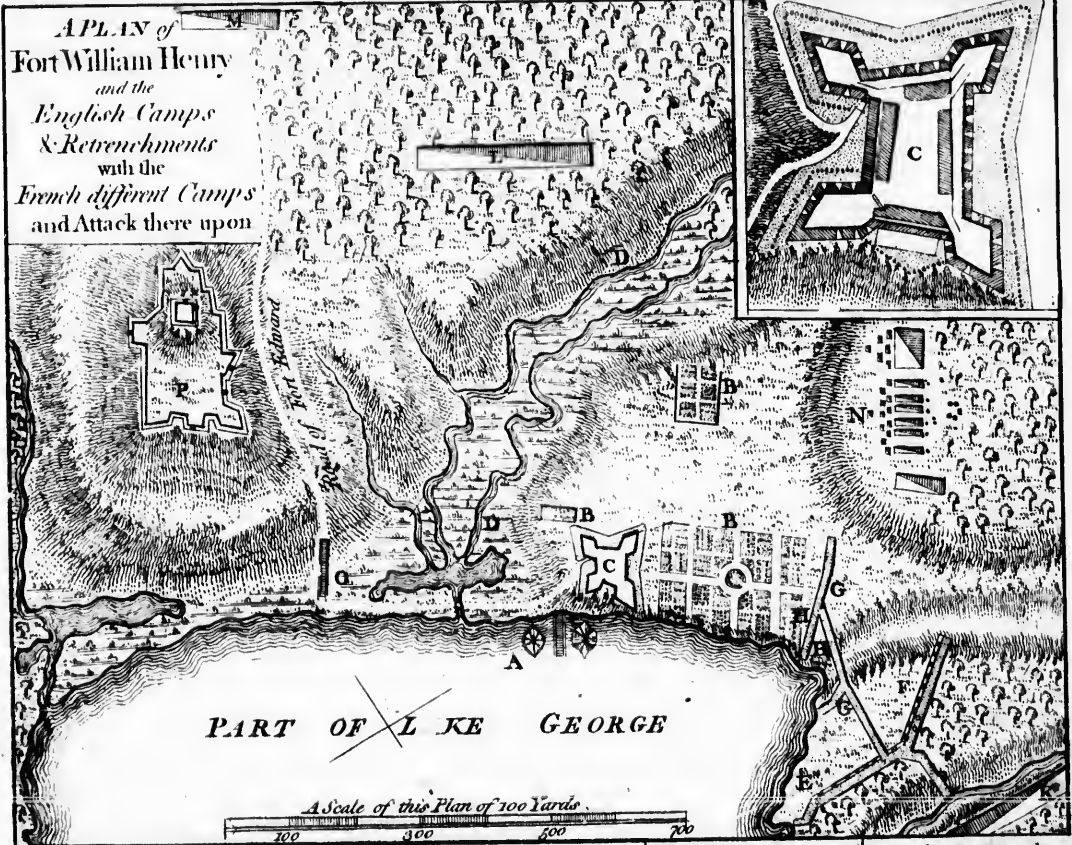
P

P

P

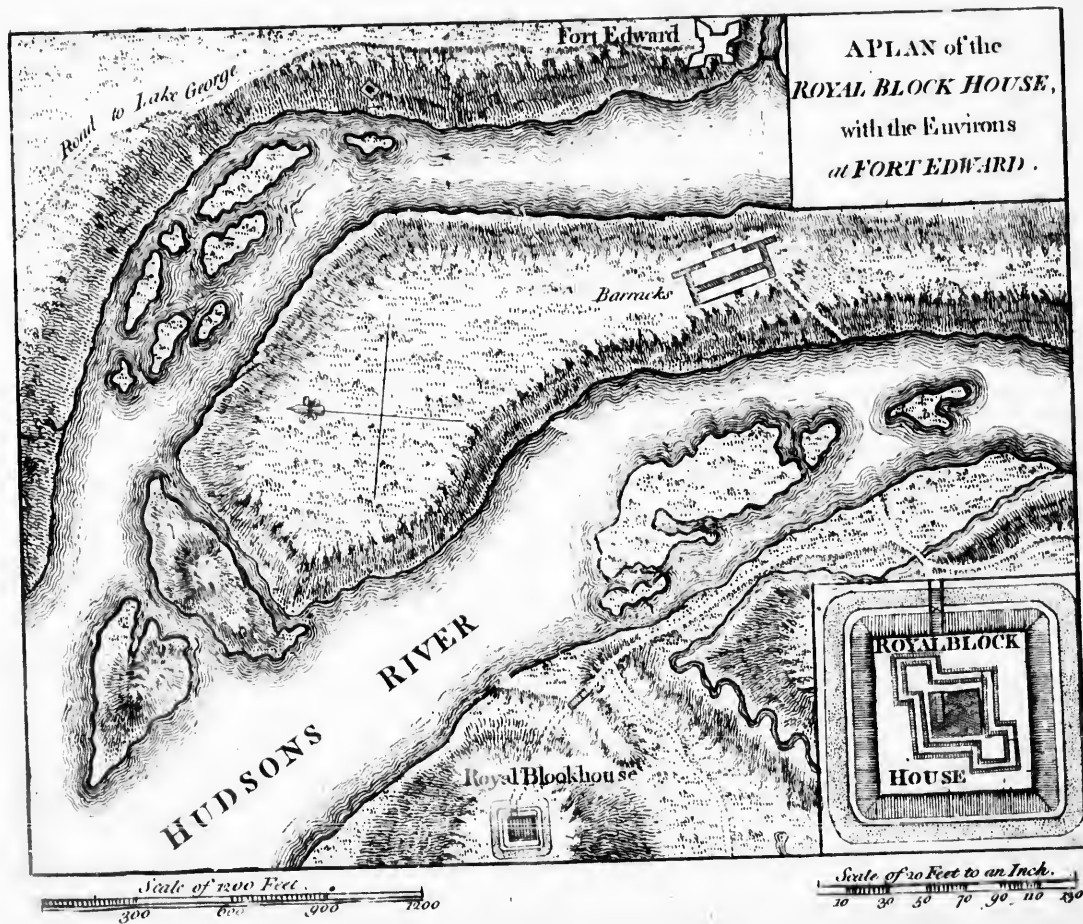
A. The Dock
 B. The Garrison Gardens
 C. Fort William Henry
 D. The Different Morasses
 E. The Enemy's 1st Battery of 9 Guns & 2 Mortars
 F. Their 2^d Battery of 10 Guns and 3 Mortars
 G. Their Approaches
 H. Two Intended Batteries

APLAN of
Fort William Henry
and the
English Camps
& Retrenchments
with the
French different Camps
and Attack there upon

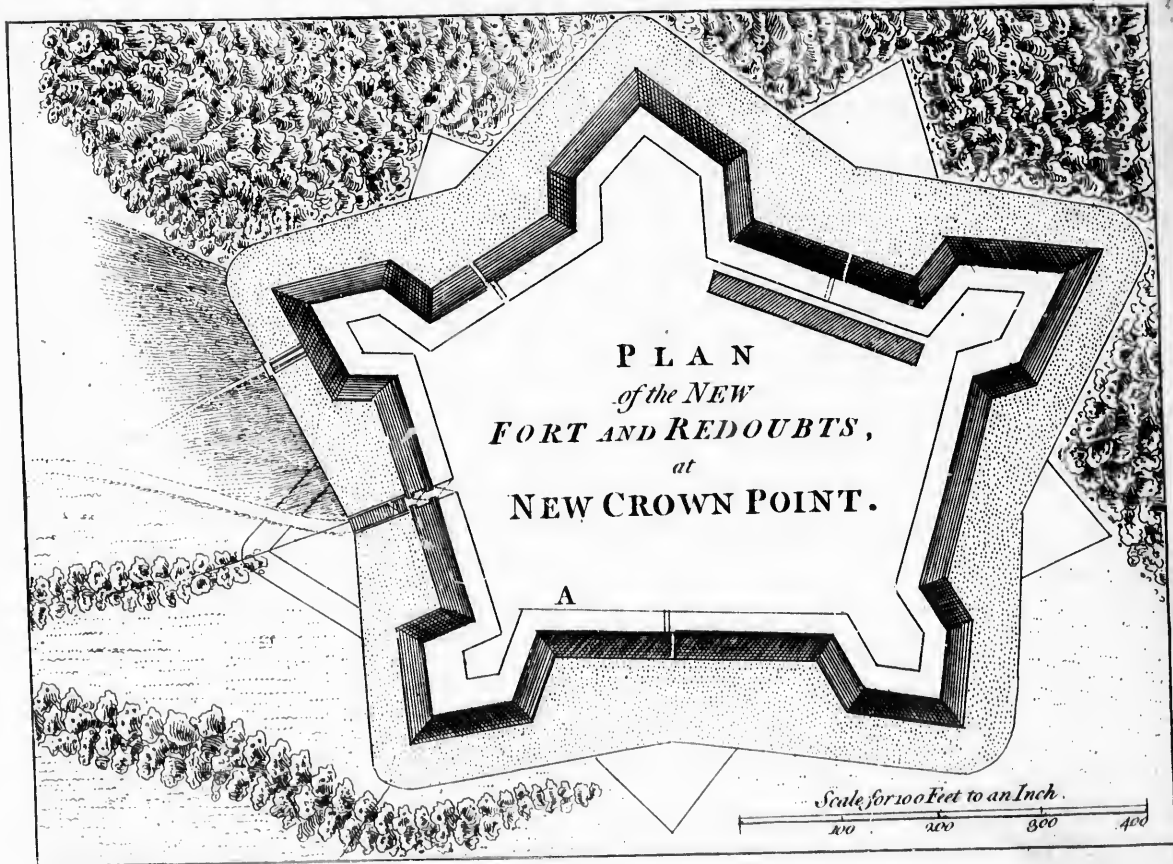


I. The Place where they landed their Artillery
 K. M. Moncaubs Camp with
 the main Body of Army
 L. M. de Levis Camp with
 3000 Regulars & Canadians
 M. M. de la Corne with
 1500 Canadians & Indians
 N. The Ground where the
 English Troops Encamped
 before they was ordered by
 G. O. the bridge over y^e Morasse
 Wild to the Place where the
 Retrenchment was made
 P. The English Retrenchment





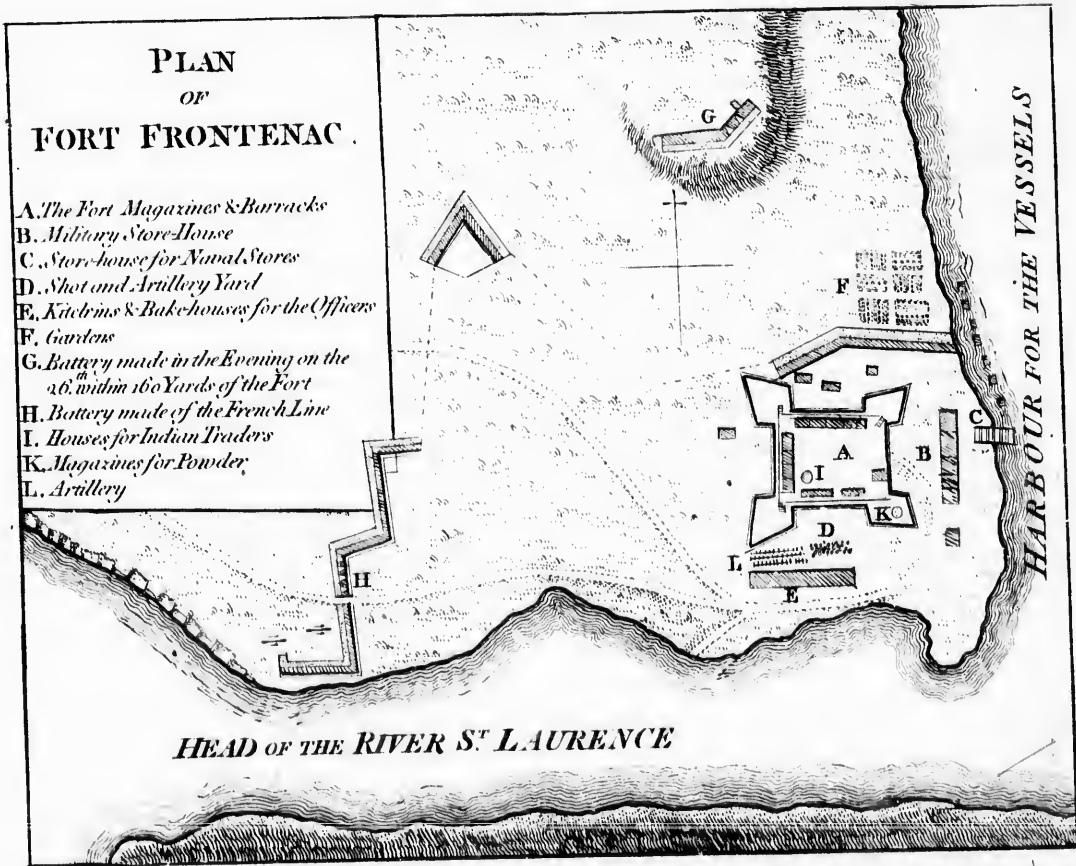


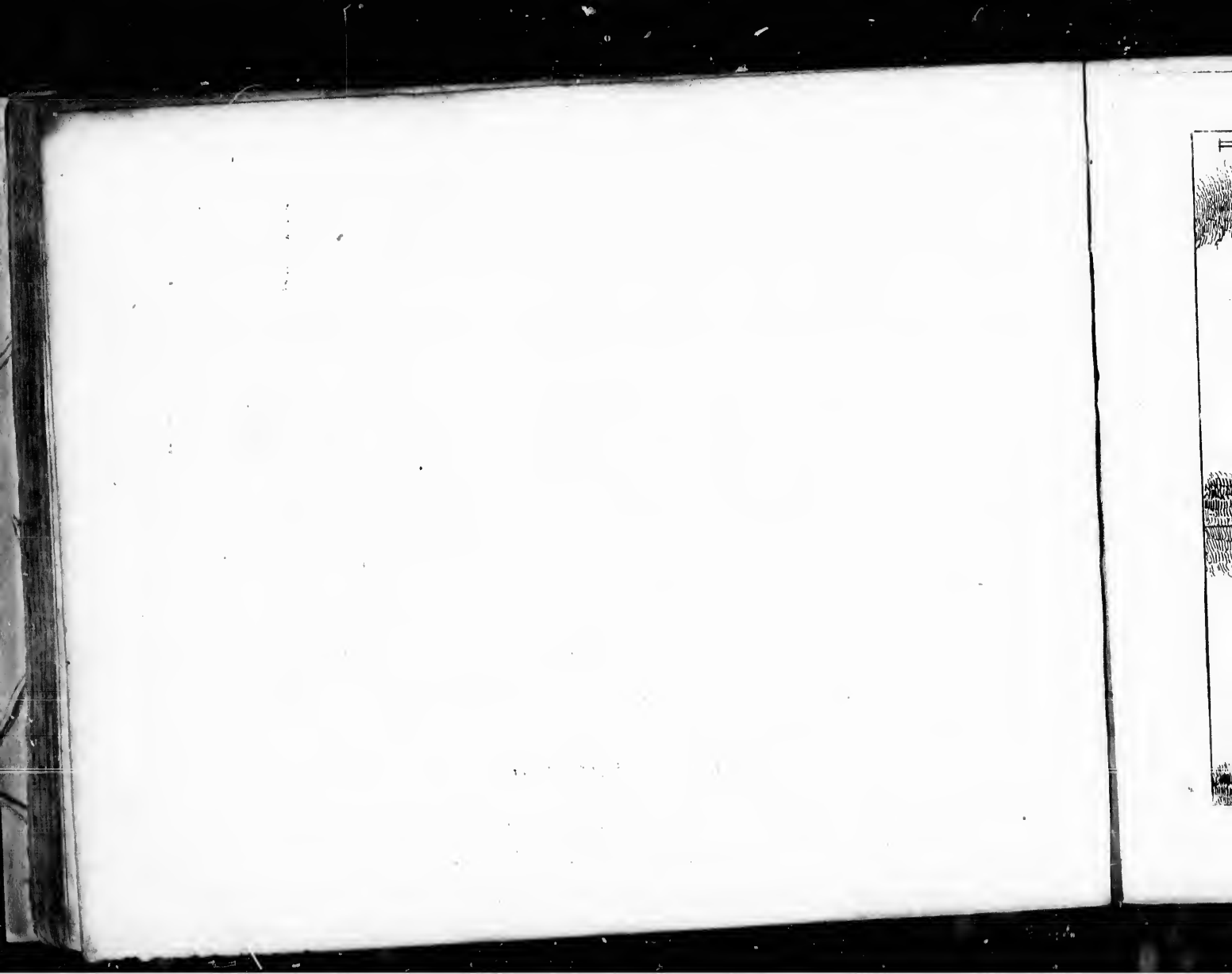


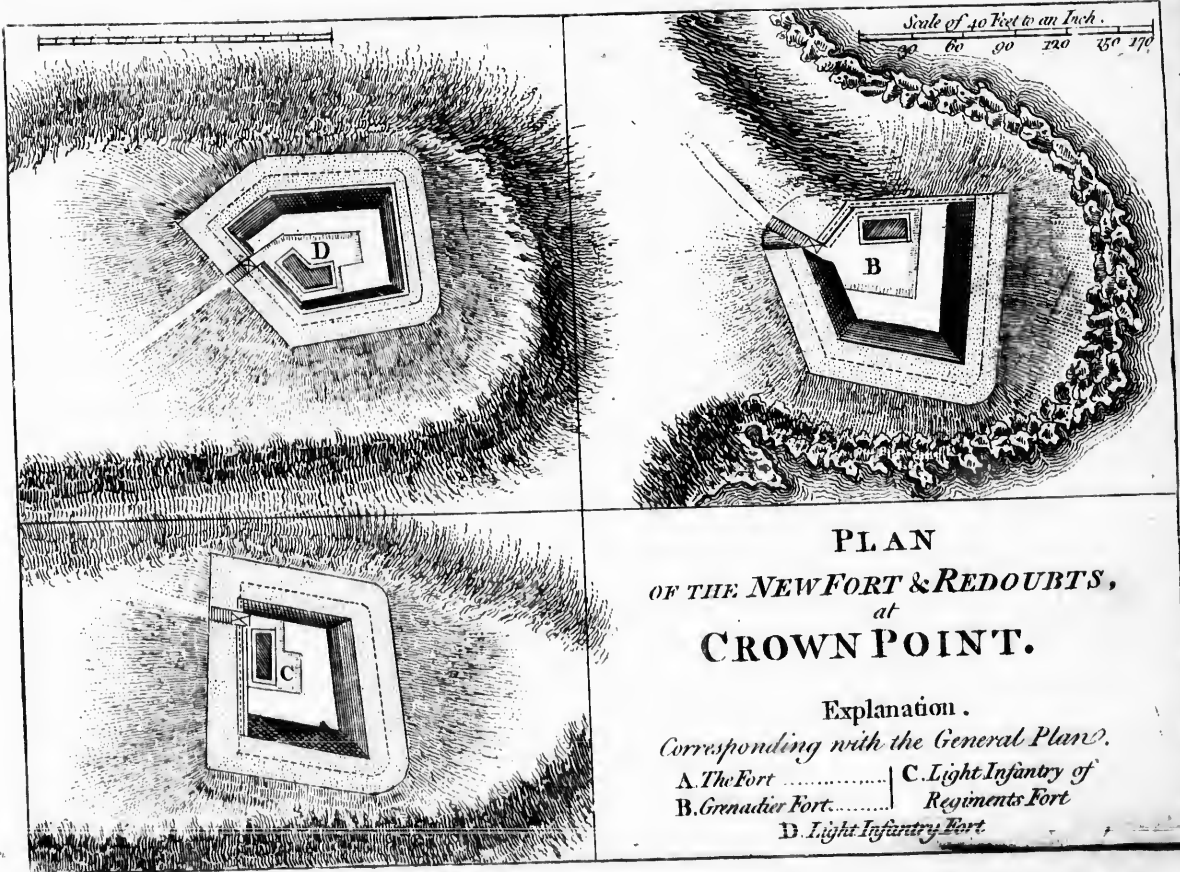


PLAN
OF
FORT FRONTENAC.

- A. The Fort Magazines & Barracks
 B. Military Store-House
 C. Store-house for Naval Stores
 D. Shot and Artillery Yard
 E. Kitchens & Bake-houses for the Officers
 F. Gardens
 G. Battery made in the Evening on the
 26th width 160 Yards of the Fort
 H. Battery made of the French Line
 I. Houses for Indian Traders
 K. Magazines for Powder
 L. Artillery





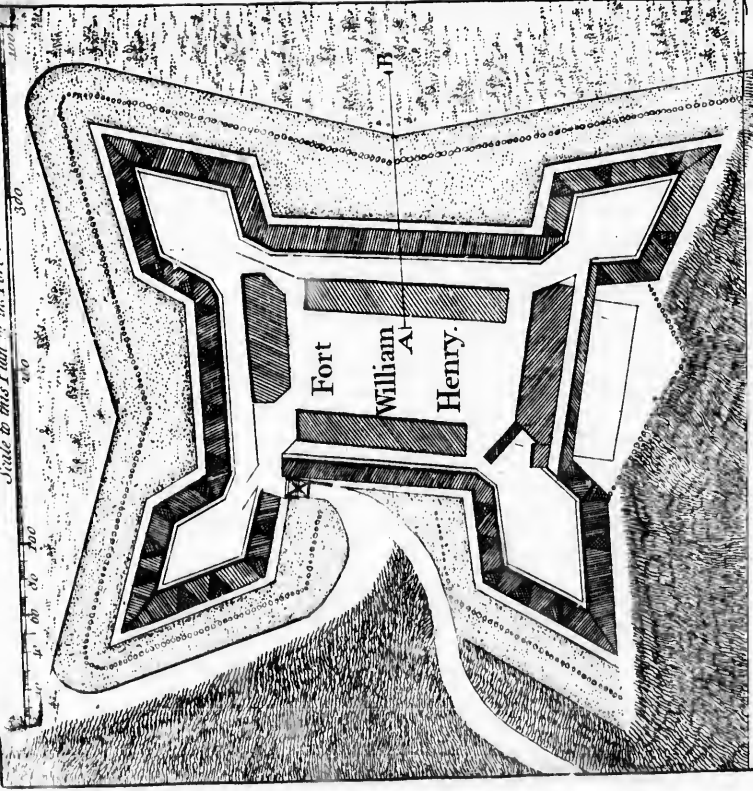


PLAN
 OF THE NEW FORT & REDOUBTS,
 at
 CROWN POINT.

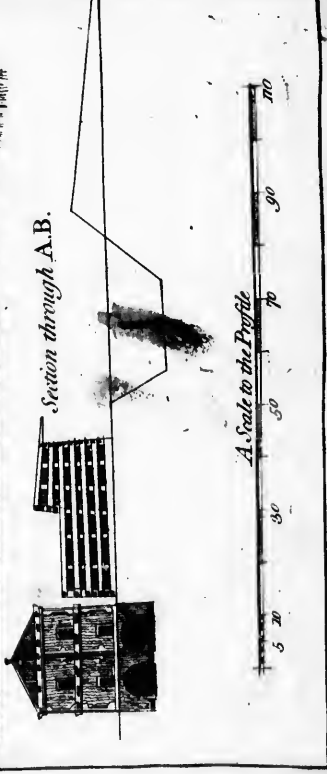
Explanation.
 Corresponding with the General Plan.

A. The Fort	C. Light Infantry of
B. Grenadier Fort	Regiments Fort
	D. Light Infantry Fort

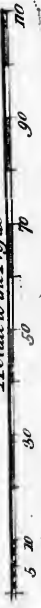
Side to this Plan of the Fort.



Section through A.B.

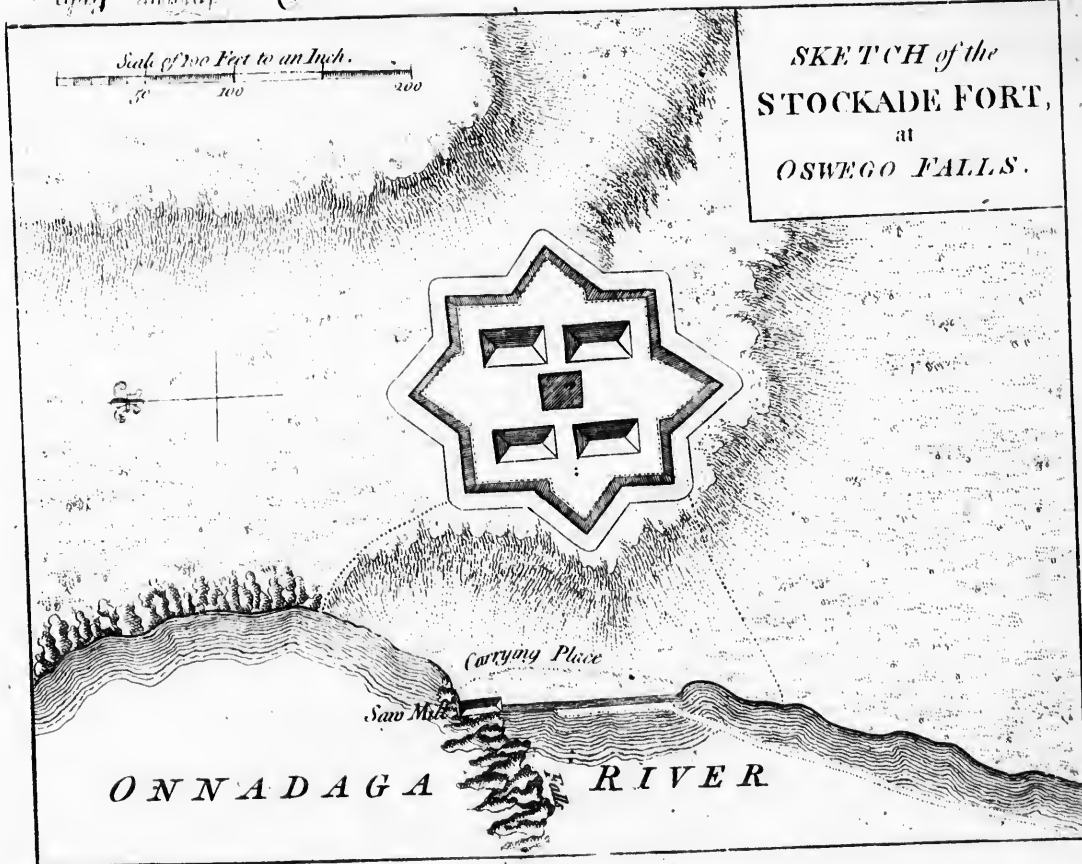


A. Scale to the Profile





Wm. Smith del.

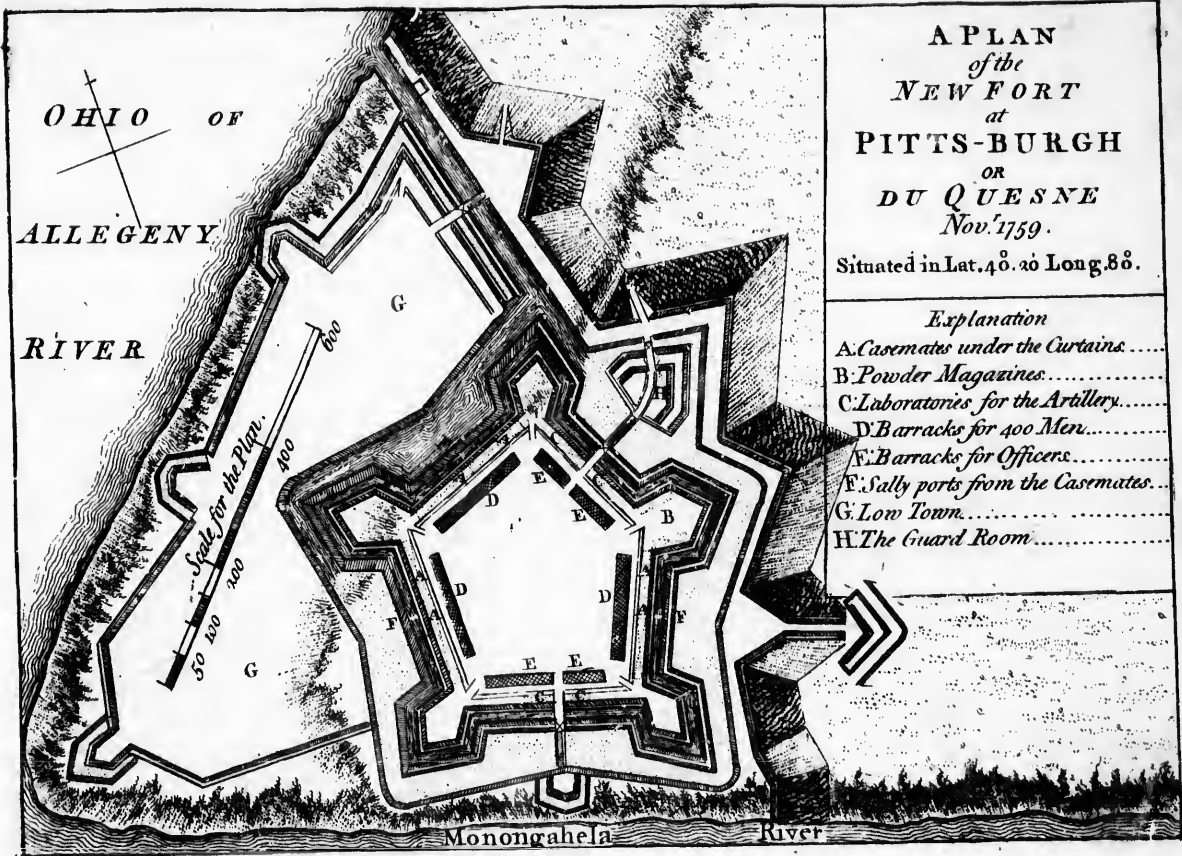


01

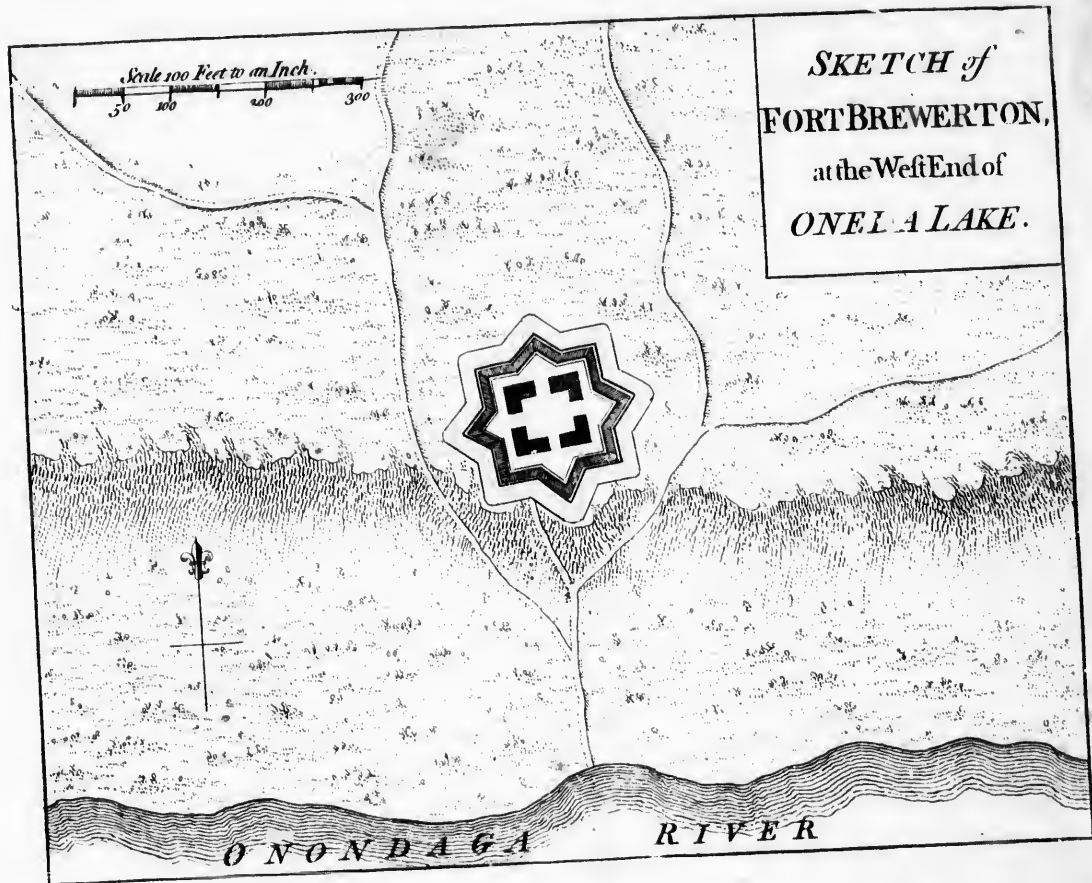
ALL

RI





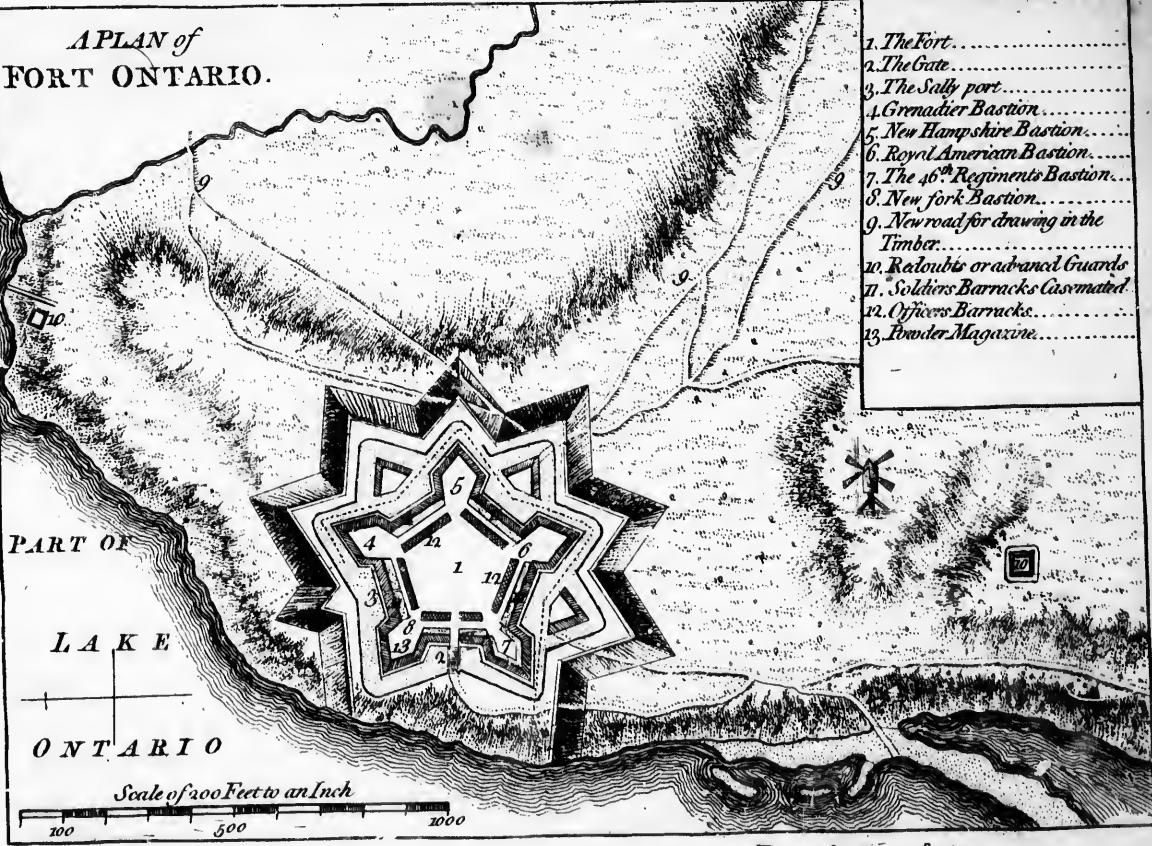






A PLAN of
FORT ONTARIO.

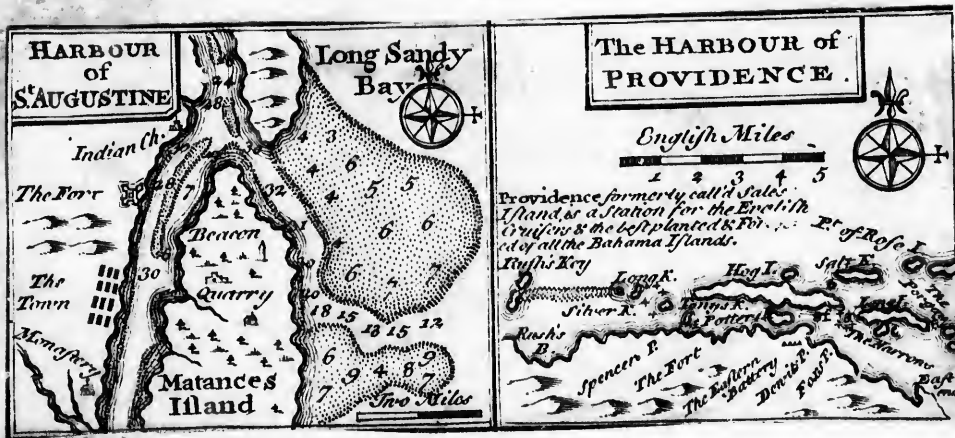
- 1. The Fort.....
- 2. The Gate.....
- 3. The Sally port.....
- 4. Grenadier Bastion.....
- 5. New Hampshire Bastion.....
- 6. Royal American Bastion.....
- 7. The 46th Regiments Bastion.....
- 8. New York Bastion.....
- 9. New road for drawing in the
Timber.....
- 10. Redoubts or advanced Guards.....
- 11. Soldiers Barracks Casemated.....
- 12. Officers Barracks.....
- 13. Powder Magazine.....



PART OF
LAKE
ONTARIO

Scale of 200 Feet to an Inch
100 500 1000

P. Anderson Sculp



Mr. Long

1899
 G. W. R. L. L.
 L. L.

100



A Draught of BOSTON HARBOUR.



