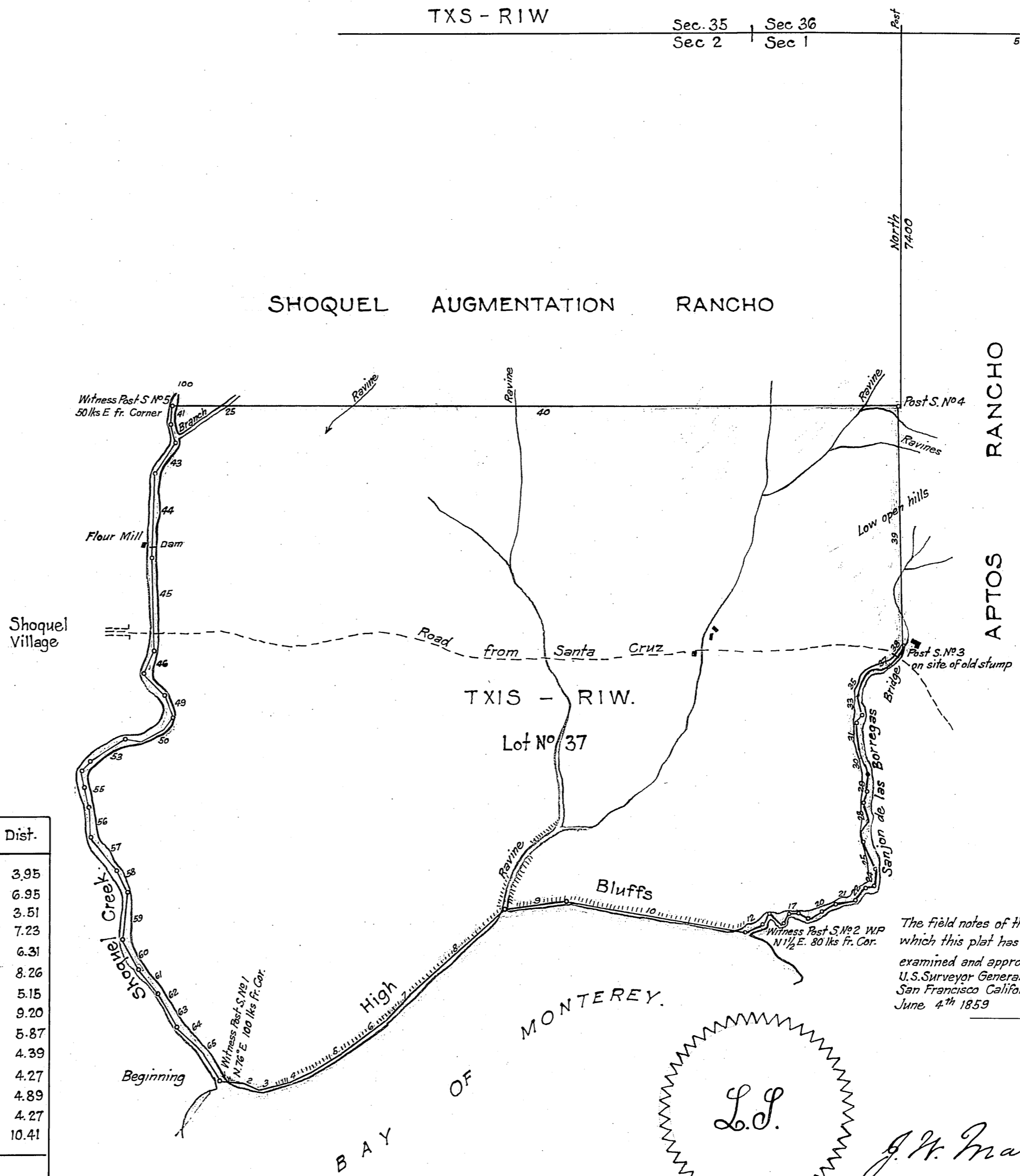


**PLAT**  
of the  
**SHOQUEL RANCHO**  
*finally confirmed to*  
**MARTINA CASTRO**  
Surveyed under instructions from the  
**U.S. SURVEYOR GENERAL**  
by  
J. Wallace Dep. Surv<sup>r</sup>  
February & December 1858  
Containing 1668 <sup>3</sup>/<sub>100</sub> Acres.  
Scale 20chs to 1inch  
Var. 15°30' E.

Boundaries.

No	Course	Dist.	No	Course	Dist.	No	Course	Dist.	No	Course	Dist.
1	N 76° E	1.00	18	S 55 1/4 E	2.20	35	N. 42 1/4 E	2.18	52	S 84 3/4 W	3.95
2	S 80 "	6.92	19	N 74 1/2 E	1.76	36	" 83 1/4 "	2.76	53	" 56 1/2 "	6.95
3	N 77 "	3.60	20	" 40 3/4 "	3.48	37	" 43 3/4 "	2.90	54	" 47 3/4 "	3.51
4	" 65 "	7.36	21	" 73 1/2 "	6.34	38	" 46 1/2 "	2.04	55	" 10 1/4 E	7.23
5	" 56 3/4 "	11.36	22	" 37 1/2 "	2.67	39	North	49.00	56	" 12 3/4 "	6.31
6	" 56 1/4 "	7.40	23	" 83 "	1.80	40	West	146.20	57	" 37 1/4 "	8.26
7	" 42 1/4 "	8.58	24	" 6 "	4.00	41	S 1 1/4 E	3.00	58	" 21 1/4 "	5.15
8	" 48 3/4 "	22.71	25	" 25 W	5.20	42	" 19 1/2 "	4.45	59	" 5 "	9.20
9	" 79 "	12.00	26	" 12 "	3.03	43	" 37 W	7.80	60	" 21 1/4 "	5.87
10	S. 79 1/2 "	38.44	27	" 20 E	2.22	44	South	16.23	61	" 38 1/2 "	4.39
11	N 1 1/2 "	0.80	28	" 8 W	4.13	45	S 1 1/4 E	18.50	62	" 37 1/2 "	4.27
12	" 64 "	3.00	29	" 7 1/4 E	5.70	46	" 26 W	5.75	63	" 25 1/2 "	4.89
13	" 24 "	2.20	30	" 25 1/2 W	3.60	47	" 29 1/2 E	2.00	64	" 44 1/4 "	4.27
14	S. 68 "	1.76	31	" 12 1/4 "	5.60	48	" 49 "	4.00	65	" 37 1/2 "	10.41
15	" 58 "	2.23	32	" 22 3/4 E	2.75	49	" 17 "	4.00			
16	N. 10 "	2.10	33	" 6 W.	3.79	50	" 23 W	2.07			
17	S. 68 "	2.07	34	" 10 3/4 E	3.10	51	" 63 "	5.88			



The field notes of the Shoquel Rancho and from which this plat has been made out, have been examined and approved, and are on file in this Office. U.S. Surveyor General's Office San Francisco California June 4th 1859

True copy of map appearing in Land Patents Vol. 1 at page 67  
*Paul Lindsay*  
 County Recorder