

SECRET

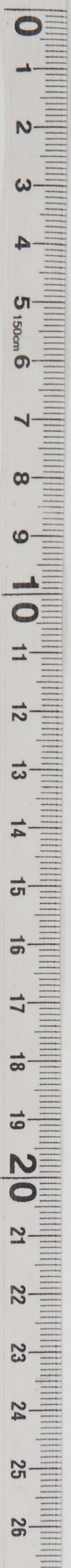
370.05

CRULLER

1949

G-4 Adm File

SECRET





SECRET

1200-9- 8

GENERAL HEADQUARTERS  
FAR EAST COMMAND  
APO 500

370,05

AG 381 (14 July 49) JSPOG

22 AUG 49.

SUBJECT: Outline Plan CRULLER, 14 July 1949 Edition.

G-4 ROUTING	
A C/S G-4	_____
D AC/S G-4	_____
EXECUTIVE	_____
PLANS & POLICY	_____
OPERATIONS	_____
CONST. & FAC	_____
TRANSPORTATION	_____
SUPPLY	_____
PETROLEUM	_____
BUDGET	_____

PERSONNEL  
ADMINISTRATION

Subject Plan has been reviewed and found in consonance with CINCFE plans with the following exceptions:

a. Paragraph 5 b. (1) assumes that the KSF will be able to delay enemy forces and traitorous and dissident elements for a minimum of 72 hours. Our estimate of this minimum time is 96 hours. This difference might be critical because it would require between 70 and 90 hours to move ships from Japan to Inchon and embark the evacuees.

b. Paragraph 5 b (4) assumes that evacuation by surface craft be considered as auxiliary to evacuation by air. In our plans, both air and water lift are provided but primary dependence is not placed on air lift because of the possibility of poor weather and other air operational difficulties.

c. Paragraph 1 c (3) of Annex 4 assumes that Japanese-manned shipping actually present in Korean waters and ships of the Marine Division, Korean Ministry of Transportation, may be available for evacuation and the movement of this shipping will be under the operational control of COMNAVFE. Our plans state that COMNAVFE will provide Naval surface craft cover and escort for such movement. It is anticipated that communication difficulties will preclude the amount of control normally understood in "Operational Control".

d. There is a small difference between our estimates of people to be evacuated. The figures in your plan have been accepted.

FOR THE COMMANDER-IN-CHIEF:

EL FRAZIER  
Captain, AGD  
Asst Adj Gen

Copies furnished:  
CG, 8th Army, APO 343  
CG, FEAFF, APO 925  
COMNAVFE, Navy No. 1165

MAILED 1330 AUG 22 '49 AG - GHQ

SECRET

G-4



G-4 ROUTING

- A C/S G-4
- D AC/S G-4
- EXECUTIVE
- PLANS & POLICY *Ag*
- OPERATIONS
- CONST & FAC
- TRANSPORTATION
- SUPPLY
- PETROLEUM
- BUDGET

2 PERSONNEL ADMINISTRATION *Noted and forwarded.*

1 Incl  
Plan CRULLER

SECRET

370.05

Lt. Col. Cooper, 26-6039

Outline Plan CRULLER

G-2

5 August 1949

*MEL*

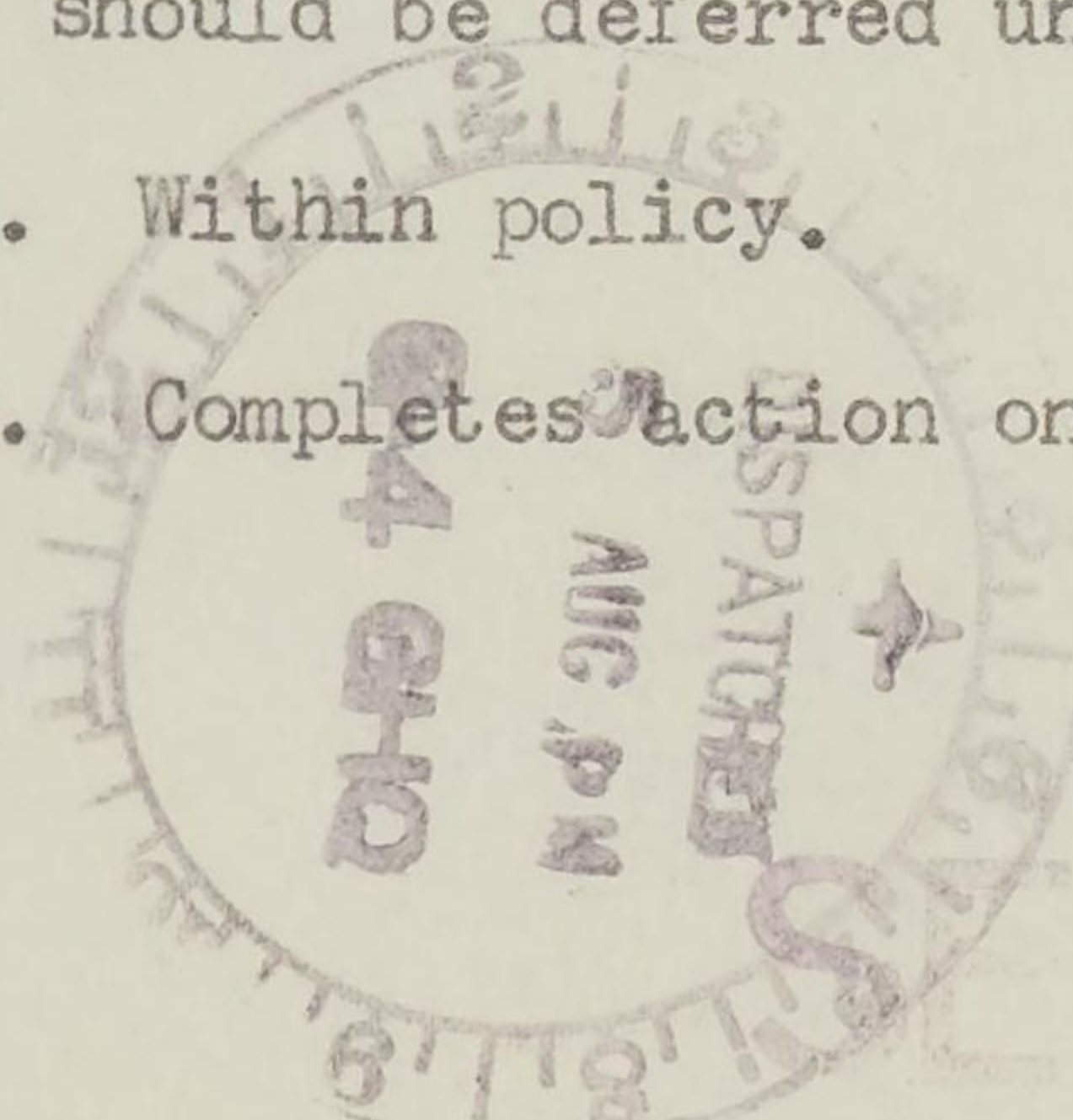
G. L. E.

MEMORANDUM FOR RECORD:

GD P&P AJC/bs  
5 August 1949

1. Outline plan CRULLER is the alert and evacuation plan prepared by Chief KMAG providing for the assembly of American nationals and certain foreign nationals (designated by the U. S. Ambassador to Korea) at SEOUL-KIMPO (strength 1677) and at PUSAN (strength 183) for onward evacuation to Japan by COMNAVFE and CG FEAF with reception by 8th Army.
2. JSPOG has action on CRULLER. JSPOG (Lt. Col. Warren, 26-7075) has reviewed the plan and found in general agreement with the FEC overall plan, CHOW CHOW. COMNAVFE, CG FEAF AND CG 8th Army supporting plans are due in JSPOG by 15 Aug 49. ~~After receipt and review~~ of all supporting plans, JSPOG will review for agreement with CHOW CHOW and coordination among supporting plans. JSPOG then intends to forward the family of plans to G-3 Operations for file and FEC operational responsibility, if operation should be directed.
3. Review of the plan fails to reveal any need for recommending revision of G-4 aspects. It is noted that while rations and medicines are provided at evacuation points, no mention is made for provision from Korea sources of medical attention or minimum housekeeping supplies for ship or air evacuation. CHOW CHOW calls on 8th Army to provide rations, supplies and guard, administrative and supervisory personnel for NAVFE ships as required. However, COMNAVFE has pointed out that the 96 hours that G-2 estimates should be available for evacuation may not suffice if ships must pick up blankets, etc. before departure. As availability of time is the essence of the problem, the provision of 8th Army stores to ships should probably be eliminated. Decision in this matter should be deferred until all plans are available.
5. Within policy.
6. Completes action on G-4 Journal No. 87253.

G-4 File Copy



SECRET

AJC *[Signature]*

MNH *[Signature]*

FLR *[Signature]*

*MEL*

P&P

87253

G-4 File Copy



*370,05*

*Secret*

GENERAL HEADQUARTERS  
FAR EAST COMMAND

OUTGOING MESSAGE

G-4 ROUTING	
A C/S G-4	
D AC/S G-4	
EXECUTIVE EHS/ss	
PLANS & POLICY	<i>FBI</i>
OPERATIONS	<i>SWC</i>
July 1949	
CONST & FAC	
TRANSPORTATION	
SUPPLY	
PETROLEUM	
BUDGET	
PERSONNEL	<i>1210</i>
ADMINISTRATION	<i>X</i>

FROM: CINCFE TOKYO JAPAN

TO: DA WASH DC . . . . . ROUTINE

CHIEF KMAG SEOUL KOREA . . . . . ROUTINE

AMEMBASSY SEOUL KOREA . . . . . ROUTINE

CG EIGHTH ARMY YOKOHAMA JAPAN . ROUTINE (COURIER)

COMNAVFE TOKYO JAPAN . . . . . ROUTINE (COURIER)

CG FEAF TOKYO JAPAN . . . . . ROUTINE (COURIER)

*CX 51365*

For CSGOT Reurmsg WX 91311, 11 July 49.

Assumption correct. Code name asgd ourmsg CX 51251, 8 July 49, was

"Cruller" (Charlie Roger Uncle Love Love Easy Roger)

OFFICIAL:

APPROVED:

R. M. LEVY  
Colonel, AGD  
Adjutant General

*for H.C. Hoyercraft*  
WARD H. MARIS  
Brigadier General, GSC  
Asst Chief of Staff, G-3

Copies to:

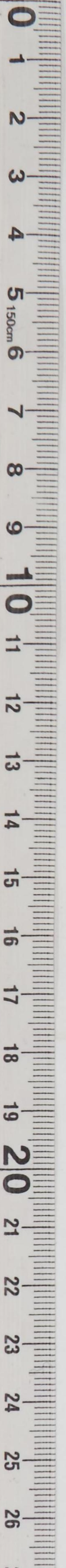
- |              |       |
|--------------|-------|
| C-in-C       | G-4   |
| C/S          | JSPOG |
| G-1          | Sig O |
| G-2 (2)      | Trans |
| G-3 (return) |       |

Handling and transmission of literal plain text of this message as correspondence of the same classification has been authorized by the War Department in accordance with the provisions of paragraphs 16-C, 18-E, 53-A, 57-D (1), (2), (3), and 60-A (1) (2).

MEMO for RECORD: CINCFE msg CX 51251, 8 Jul 49, asgd code name "Cruller". Msg garbled in transmission with result DA (CSGPO) received msg indicating code name "Crulor". DA msg WX 91311 asks clarification. Inst msg informs all addresses of correct name.

INFORMATION COPY  
SIMPSON  
*26-6159*  
*Empson*  
*Secret*





ROUTINE  
 ROUTINE  
 ROUTINE  
 ROUTINE  
 ROUTINE  
 ROUTINE

OUTGOING MESSAGE  
 THE JAPAN COMMAND  
 MILITARY HEADQUARTERS



TO HEAD QUARTERS TOKYO JAPAN  
 FROM THE JAPAN COMMAND MILITARY HEADQUARTERS  
 ROUTINE (COURIER)  
 ROUTINE (COURIER)  
 ROUTINE (COURIER)

For CSCT Reurmsg WX 91311, 11 July 50.  
 Assumption correct. Code name and outmsg CX 52521, 8 July 50, was

"Crifor" (Charlie Roger Uncle love love Roger)

APPROVED:

*for R. M. Levy*  
 Brigadier General, GSC  
 Asst Chief of Staff, G-3  
 WND H. MARRIS

R. M. LEVY  
 Colonel, AGO  
 Adjutant General

G-3	(S)
G-2	(S)
G-1	(S)
Trans	
Sig C	
ASPOC	
G-1	

NOTE FOR RECORD: CINCPAC msg CX 52521, 8 July 50, said code name "Crifor".  
 The error in transmission with result DA (GSCPO) received msg indicating  
 code name "Crifor". DA msg WX 91311 asks clarification. That msg informs  
 all addresses of correct name.

INFO: DA (GSCPO)  
 GSCPO  
 WND H. MARRIS  
 G-3  
 ASPOC



*370.05*

**SECRET**

GENERAL HEADQUARTERS  
FAR EAST COMMAND

OUTGOING MESSAGE

G-4 ROUTING <i>A</i>	
<i>1</i>	A C/S G-4
<i>2</i>	D AC/S G-4
<i>3</i>	EXECUTIVE
<i>3</i>	PLANS & POLIC
<i>2</i>	OPERATIONS
GC-A	CONST EHS/hhc
	TRANSPORTATION
	SUP July 1949
	PETROLEUM
	BUDGET
<i>4</i>	PERSONNEL
	ADMINISTRATION

*g...  
388  
mw*

*MIS  
8095W  
Fy*

FROM: CINCFE

TO: DEPARTMENT OF ARMY. . . . .ROUTINE

CHIEF KMAG. . . . .ROUTINE

AMEMBASSY SEOUL. . . . .ROUTINE

CG EIGHTH ARMY. . . . .ROUTINE (COURIER)

COMNAVFE. . . . .ROUTINE (COURIER)

CG FEAF . . . . .ROUTINE (COURIER)

CX 51252 For CSGPO. Reference CINCFE msg CX 51251 current.

Meaning of secret code name contained therein is "Emergency Evacuation  
Plan for American Mission in Korea."

OFFICIAL:

APPROVED:

R. M. LEVY  
Colonel, AGD  
Adjutant General

*for KC Haycraft*  
WARD H. MARIS  
Brigadier General, GSC  
Assistant Chief of Staff, G-3

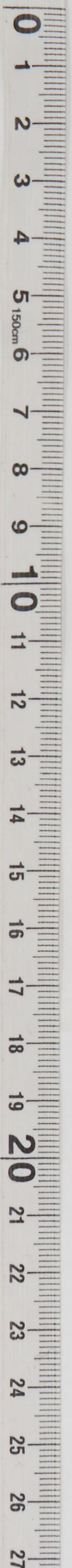
Copies to:

- |         |                            |
|---------|----------------------------|
| C-in-C  | G-3 ( <del>2</del> return) |
| C/S     | G-4                        |
| G-1     | JSPOG                      |
| G-2 (2) | Sig O                      |
|         | Trans                      |

MEMO FOR RECORD: Basic action is verbal request of Lt Col Hanson, G-3,  
KMAG, for asgmt of code name. Required code name asgd in CINCFE msg  
CX 51251 current. Inst msg contains meaning of referenced code name.  
No coordination required. Distribution same as CINCFE msg CX 51251.

INFORMATION COPY  
Simpson  
26-6159  
53-0 (1) (2) (3) (4), AR 280-6  
**SECRET**





SECRET

GENERAL INVESTIGATIVE  
DIVISION

ROUTING SLIP

TO: SAC, NEW YORK

FROM: SAC, NEW YORK

DATE: 7/9/49

RE: [Illegible]

TO: SAC, NEW YORK (100-100000)

TO: SAC, NEW YORK (100-100000)

TO: SAC, NEW YORK (100-100000)

TO: SAC, NEW YORK (100-100000)

TO: SAC, NEW YORK (100-100000)

TO: SAC, NEW YORK (100-100000)

TO: SAC, NEW YORK (100-100000)

TO: SAC, NEW YORK (100-100000)

TO: SAC, NEW YORK (100-100000)

TO: SAC, NEW YORK (100-100000)

*for KC [Illegible]*  
[Illegible]

[Illegible]

[Illegible]

[Illegible]

RECEIVED  
9 JUL 1949  
G-4 OP

RECEIVED  
M.A.M.  
9 JUL 6  
[Illegible]



*Secret*  
SECRET  
GENERAL HEADQUARTERS  
FAR EAST COMMAND

OUTGOING MESSAGE GC-A

G-4 ROUTING	
1	A C/S G-4
2	D AC/S G-4
3	EXECUTIVE
4	PLANS & POLICY
	OPERATIONS
	CONST & FAC
	TRANSPORTATION
	SUPPLY
	PETROLEUM
	BUDGET
	PERSONNEL

*080949*  
*mm*  
*for*

8 July 1949

FROM: CINCFE

TO: DEPT OF ARMY . . . . . ROUTINE

CHIEF KMAG . . . . . ROUTINE

AMEMBASSY SEOUL . . . . . ROUTINE

CG EIGHTH ARMY . . . . . ROUTINE (COURIER)

COMNAVFE . . . . . ROUTINE (COURIER)

CG FEAF . . . . . ROUTINE (COURIER)

CX 51251 For CSGPO. At request Chief KMAG and in compliance with WARX 91148, 7 Jul 49, secret code name "CRULLER" assigned here this date. Meaning will be indicated in separate message.

OFFICIAL:

APPROVED:

R. M. LEVY  
Colonel, AGD  
Adjutant General

*for KC Hayercraft*  
WARD H. MARIS  
Brigadier General, GSC  
Asst Chief of Staff, G-3

Copies to:

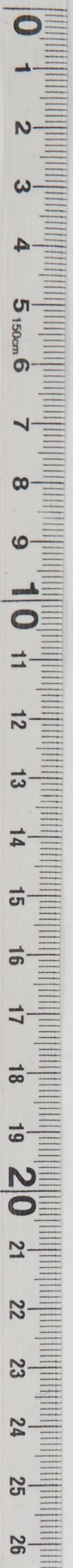
- C-in-C
- C/S
- G-1
- G-2 (2)
- G-3 (return)
- G-4
- JSPOG
- Sig O
- Trans

MEMO for RECORD: Basic action is verbal request of Lt Col Hanson, G-3 KMAG, for asgmt of code name. G-3 is responsible for asgmt of code names for plans and projects within FEC and for notifying the DA of asgmt of names and their meanings. KMAG request included all information necessary for asgmt of a code name and the undersigned selected a code name from the list of authd code names asgd this command, which are contained in JANAP 299, U. S. Joint Services Code-Word Index. Inst msg, to addressees as indicated, assigns code name. Meaning of code name to be contained in separate msg. No coordination required.

*Ed*  
Simpson  
26-6159

SECRET  
*Secret*





*[Faint, illegible text and markings on aged paper, possibly bleed-through from the reverse side.]*

RECEIVED  
9 JUL 1949  
G-4 OP

RECEIVED  
9 JUL 49  
M. A. T. M.



DECLASSIFIED

Authority *NND 975029*

SECRET

SECRET

