

Samuel T. Freeman & Co.  
The valuable collection of  
Chinese and Japanese art  
treasures

Lilly  
N  
7262  
.S268  
1921



# CHINESE AND JAPANESE ART TREASURES

From the Collection  
of  
ALBERT J. OSGOOD



Under the Management of  
SAMUEL T. FREEMAN & CO.  
AUCTIONEERS  
Established November 12, 1805  
1519-21 CHESTNUT STREET, PHILADELPHIA



AT UNRESTRICTED PUBLIC SALE

---

SAMUEL T. FREEMAN & CO.  
AUCTIONEERS

---

THE VALUABLE COLLECTION  
" *of*  
CHINESE AND JAPANESE  
ART TREASURES

FROM THE COLLECTION OF

ALBERT J. OSGOOD  
OF WASHINGTON, D. C.

*Monday, Tuesday and Wednesday*  
*October 24th, 25th and 26th*  
*At 2 P. M. each day*


IN OUR ART GALLERIES  
1519-21 CHESTNUT STREET, PHILADELPHIA


---

*On free public view Friday and Saturday, October 21st and 22nd*

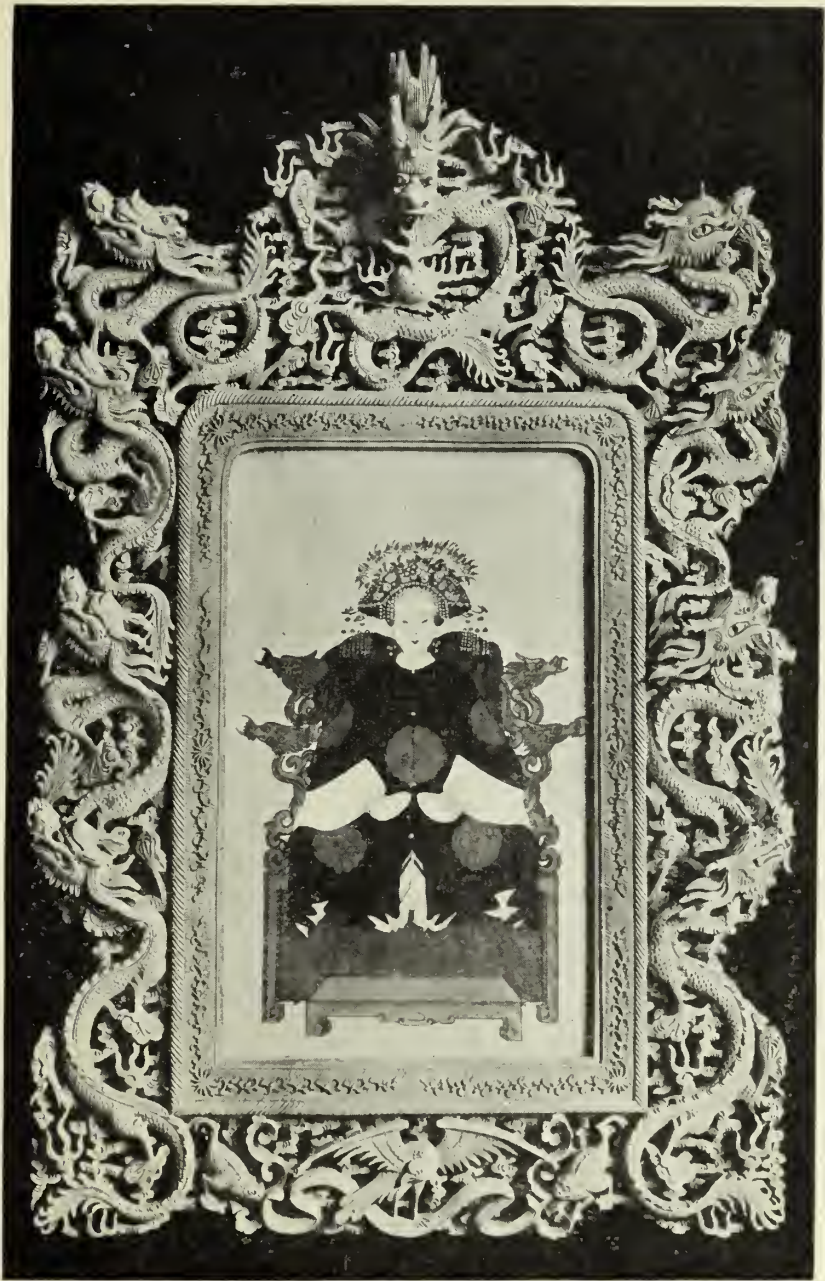
---

SAMUEL T. FREEMAN & CO.  
AUCTIONEERS  
ESTABLISHED NOVEMBER 12, 1805  
1519-21 CHESTNUT STREET, PHILADELPHIA

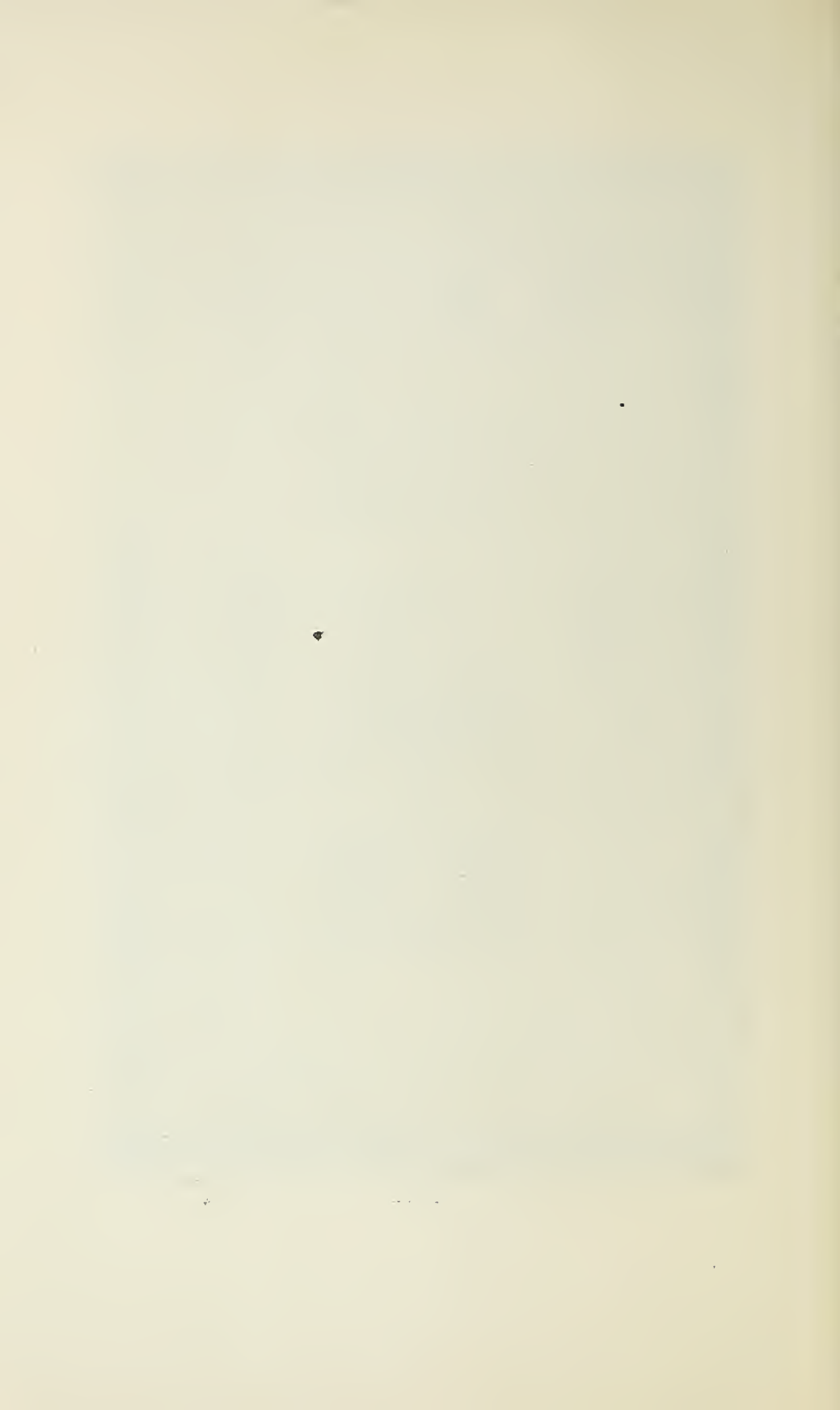
 Owing to the great demand for Catalogues, it is urgently requested that this Catalogue be retained for use at the sale.



**CATALOGUES  
COMPILED AND ISSUED  
BY  
SAMUEL T. FREEMAN & CO.**



No. 557





E. C. L.  
107  
.50  
582  
3193  
1921

## TERMS OF SALE.

SPECIAL NOTICE—No employee is authorized to alter these terms.

1 The highest bidder to be the buyer, subject to the terms of sale, and if any dispute arises between two or more bidders, the Auctioneers shall either decide the same or the lot so in dispute shall be immediately put up again and re-sold.

2 Any bid which is merely a nominal or fractional advance may be rejected by the Auctioneer if in his judgment such bid would be likely to affect the sale injuriously.

3 Every article sold singly; nothing sold by the pair.

4 Purchasers to give names and addresses, and to make a deposit of 25 per cent., or as much as the Auctioneers may require in part payment, or the whole of the purchase money if required; in default of which the lot or lots so purchased to be immediately put up again and re-sold.

5 All deposits made are applicable to any or all purchases either at this sale or at any previous sale.

6 The lots to be taken away and paid for at the buyer's risk and expense within the time announced by the Auctioneer, the Auctioneers not being responsible for the correct description, genuineness, authenticity or defect in any lot, and making no warranty unless specially mentioned at the time of sale. No sale will be set aside nor allowance made on account of any inaccuracy, error in cataloguing, or any imperfection not noted. No deduction on damaged articles, all goods are exposed for public exhibition, and sold just as they are. Purchases will be delivered only upon presentation of receipted bill therefor.

7 To prevent inaccuracy in delivery and inconvenience in settlement of the purchases, no lot can on any account be removed during the sale; and the remainder of the purchase money must absolutely be paid within the time announced by the Auctioneer and before the examination or removal of the goods.

8 The time allowed for payment of bills and removal of goods is either printed in the catalogue or announced by the Auctioneer and can always be obtained from the office of the Auctioneers. It is the duty of all purchasers to inform themselves thereof and no responsibility shall rest upon the Auctioneer by reason of the purchaser's ignorance thereof.

9 All purchases made at this sale are at the purchaser's risk as soon as they are struck off; the Auctioneers not being responsible if all or any part of such purchases be lost, stolen, damaged or destroyed; however, without assuming any responsibility the Auctioneers will take all usual precautions for the care and protection of the goods during the time allowed for the removal thereof.

10 All claims must be made before the removal of the goods.

11 In case of purchases for which settlement is required by estimated or actual weights, counts or measures, no adjustments will be made after the time allowed by the Auctioneers for the removal of the purchases.

12 The record kept by the clerk of the sale, together with the marked catalogue of the Auctioneers, shall in all cases be accepted by the buyers as final when any question arises.

13 In addition to any other remedies given by law to the seller, it is agreed that in case of failure by the purchasers to comply with these terms, the money deposited in part payment shall be forfeited; all lots not paid for and removed within the time allowed by the Auctioneers shall be re-sold at public or private sale without further notice, and the deficiency (if any) attending such re-sale shall be made good by the purchasers at this sale, together with all charges and expenses which may be incurred by reason of their failure to comply with the terms of sale.

14 The Auctioneers will not be liable for non-delivery of any article above the amount paid by the purchaser of such article.

15 Commissions to purchase will be executed by the Auctioneers without charge, such purchases, however, being made subject to the terms of sale.

16 In case of lots upon which there is a reserve, the Auctioneers shall have the right to bid on behalf of the seller.

17 The Auctioneers reserve the right to reject any or all bids.

18 All sales made by order of the Court are subject to the confirmation of the Court ordering the sale.

19 The Auctioneers are in no manner connected with the business of the cartage or packing and shipping of purchases, and although they will afford to purchasers every facility for employing careful carriers and packers, they will not hold themselves responsible for the acts or charges of the parties engaged for such services,

  
A large, elegant handwritten signature in cursive script, reading "Samuel T. Freeman". The signature is written in dark ink and is underlined with a single horizontal line. The signature is positioned at the bottom of the page, centered horizontally.



Digitized by the Internet Archive  
in 2017 with funding from  
Duke University Libraries

# CATALOGUE

---

## FIRST AFTERNOON'S SALE

MONDAY, OCTOBER 24, 1921

BEGINNING AT 2 P. M.

---

- 1—IRON SWORD GUARDS  
Three Pieces.
- 2—OLD SWORD GUARDS  
Two Pieces.
- 3—OLD SWORD GUARDS  
Bamboo Grove and Dragon. Three Pieces.
- 4—SWORD GUARDS  
Clam Gatherers, &c. Two Pieces.
- 5—SWORD GUARDS  
Storks, &c. Two Pieces.
- 6—SWORD GUARDS  
Horses in Bamboo Grove, &c. Two Pieces.
- 7—SWORD GUARDS  
Design of Pagoda. From Collection of Dr. Thos. Antsill (1872).
- 8—OLD SWORD GUARDS  
Three Wise Monkeys, &c. Three Pieces.
- 9—OLD CHASED DAGGER, HANDLE, &c.  
Three Pieces.
- 10—OLD JAPANESE SWORD  
With Guard and Mounts.
- 11—OLD JAPANESE SWORD  
Silver Guard and Mounts, with Crests of the Tokogawa.
- 12—OLD JAPANESE SWORD  
Guard has Design of Boy Riding a Buffalo.

- 13—OLD JAPANESE SWORD  
Guard has Design of Flowers.
- 14—SWORD BLADE  
Dragon Design.
- 14A—PIERCED IRON SWORD GUARD, AND DAGGER  
Two Pieces.
- 15—ARTICULATED CRAWFISH  
Made in Second Year of Medji. Signed.
- 16—BRONZE ARTICULATED CRAB
- 17—MENUKI  
Small Sword Ornaments. Three Pieces.
- 18—MENUKI  
Three Pieces.
- 19—MENUKI  
Three Pieces.
- 20—MENUKI.  
Three Pieces.
- 21—MENUKI  
Three Pieces.
- 22—OLD PIERCED STEEL ARROW HEADS  
Four Pieces.
- 23—BRONZE BUDDHA
- 24—METAL MEASURE FOR SHOT  
Form of Bird with Long Beak.
- 25—BRASS WATER HOLDER  
Pen and Ink Holder and Dagger.
- 26—BRONZE AND BRASS INCENSE BURNERS AND CRAB  
Three Pieces.
- 27—BRONZE FIGURES  
Form of Rats. Two Pieces.
- 28—HINDOO AND CHINESE IDOLS  
Three Pieces.

- 29—BRONZE STORK  
With Teakwood Stand.
- 30—BRONZE CANDLESTICKS  
Storks on Tortoise. Pair.
- 31—ANCIENT CHINESE BRONZE BELL AND SMALL SUN WORSHIP MIRROR  
Two Pieces.
- 32—BRONZE PHEASANT AND QUAIL  
Two Pieces.
- 33—OLD BRONZE IDOL
- 34—OLD BRONZE BUDDHA  
Khorwazeek, the Buddha Who Lived Prior to Saki Muni.
- 35—OLD BRONZE IDOL
- 36—OLD BRONZE IDOL  
God of Literature.
- 37—OLD BRONZE IDOL  
Kwangyin, Goddess of Mercy.
- 38—OLD BRONZE BUDDHAS  
Two Pieces.
- 39—OLD BRONZE IDOLS  
Two Pieces.
- 40—OLD BRONZE IDOLS  
Kwangyin.
- 41—OLD BRONZE INCENSE BURNER  
Ebisu, God of Daily Food, Seated on a Fish (Damaged).
- 42—OLD JAPANESE BRONZE FLOWER HOLDER  
In Form of a Boat Tossed on the Waves.
- 43—BRONZE FLOWER HOLDER  
Frog Holding a Calla Lily.
- 44—BRONZE INCENSE BURNER  
A Duck Standing on One Foot.
- 45—BRONZE GROUP  
Man Camping by the Roadside Being Attacked by a Soldier.  
Signed Piece by Kiani Kiyō. Old and Fine Patina.

- 46—SET SILVER BLADED FRUIT KNIVES  
Set in Dagger Handles. Six Pieces.
- 47—JAPANESE (HAN DYNASTY) KNIFE COINS, CHARM, &C.  
Nine Pieces.
- 48—OLD BRONZE STIRRUP.  
With Crest of the Okabe Family. The Okabes were Diamyos of  
Idzuma Province.
- 49—CLOISONNE INCENSE BURNER.  
Made in Peking. Top in Form of a Lion.

### LACQUERWARE.

- 50—VASES  
Silk Covered, with Lacquer. From Foochow, China.
- 51—LACQUER WARE  
Book Cover, Inlaid Boxes, &c. Four Pieces.
- 52—SMALL LACQUER GIFT BOXES  
With Crest of the Mikado. Three Pieces.
- 53—SLIDING BOOKRACK  
In Foochow Lacquer.
- 54—PAIR FOOCHOW VASES  
Brown Lacquer and Silk.
- 55—CARVED BAMBOO AND LACQUER VASE AND DIPPER  
Two Pieces.
- 56—NEST OF BLACK AND GOLD LACQUER BOXES
- 57—FOOCHOW LACQUER CRAB
- 58—FOOCHOW LACQUER BUDDHA  
On Stand.
- 59—FINE OLD GOLD LACQUER INRO
- 60—FINE OLD GOLD LACQUER INRO  
Museum Piece.
- 61—IVORY INLAID INRO  
Eagles in Flight.

- 62—SET RED LACQUER PLATES  
Decorated in Gold. Six Pieces.
- 63—SET RED LACQUER PLATES  
Decorated in Gold. Six Pieces.
- 64—GOLD DECORATED RED LACQUER COMPOTE
- 65—NEST OF THREE RED LACQUER SAUCERS
- 66—FINE OLD WRITING BOX  
With Designs of Horses Inlaid in Gold, Silver and Bronze. Inside—Raised Designs of Prunus and Maple Leaves.  
*Size 14 $\frac{3}{8}$  x 11 $\frac{3}{8}$  Inches.*

### PORCELAINS.

- 67—TEA POT  
Clair de Blanc Porcelain. Shape of a Boy.
- 68—INCENSE BURNER  
Clair de Blanc Porcelain. Hotei and Boys.
- 69—STATUETTE  
Clair de Blanc Porcelain. Daikoku Leading a Boy.
- 70—PAIR CANDLESTICKS  
Clair de Blanc Porcelain. Dragon Designs.
- 71—IDOL  
Clair de Blanc Porcelain. Kwangyin.
- 72—PAIR OLD CHINESE FOO DOGS  
In White Paste.
- 73—PAIR OLD BLUE FOOCHOW POTTERY DOGS
- 74—PAIR FAMILIE GREEN FOOCHOW POTTERY DOGS
- 75—PAIR FOOCHOW DOGS  
Blue and Yellow.
- 76—PAIR PARROTS  
Blue Porcelain.
- 77—FINE OLD SATSUMA KORO  
Figure of Hotei on Lid, with Figures of Two Boys Forming the Handles. The Base is Rich in Decoration, with Floral Designs, and Medallions Showing Ladies and Children.  
*Height, About 16 Inches.*

- 78—SATSUMA BOWL  
Soft Blue, Gold and Orange Tints.  
*Diameter, 8½ Inches.*
- 79—PAIR SATSUMA BONBON DISHES
- 80—PAIR OLD SATSUMA VASES  
Cylindrical Shape. Decorations of Ducks and Flowers, and on the Reverse Figures of Warriors. Lions' Heads for Handles. Signed.  
*Height, 14½ Inches.*
- 81—PAIR OLD SATSUMA VASES  
Cylindrical Shape of Bamboo Pattern. Decorations of Cherry Trees and Birds. (One Vase Repaired.)  
*Height, 18½ Inches.*
- 82—LARGE SATSUMA VASE  
Ovoid Shape, with Decorations in Medallions Representing a Basket of Flowers, Stork Flying over Pine Trees, &c. Signed Kinkozan, the Most Celebrated of Japanese Potters.  
*Height, 15 Inches.*
- 83—SMALL SATSUMA VASES  
Two Pieces.
- 84—SMALL SATSUMA KORO  
Signed.
- 85—SMALL SATSUMA KORO  
Designs of Heads and Buddhist Saints. Signed.
- 86—SMALL SATSUMA KORO.  
Top in Form of a Lion. Signed.
- 87—MINIATURE KORO AND PITCHER  
Blue Relief. Two Pieces.
- 88—MINIATURE KORO  
Cherry and Bamboo Designs. Signed with Crest of Prince of Satsuma.
- 89—SAKI BOTTLE AND BOWL  
Bowl Signed.
- 90—SET  
Six Satsuma Buttons, Wisteria Design, and Twelve Smaller Ones.
- 91—LARGE SATSUMA DISH  
Form of a Nautilus Shell.





No. 77



No. 120



No. 132



No. 132



## EMBROIDERIES.

- 92—LOT OF FOUR COLLARS AND SEVEN PIECES
- 93—LOT OF FIFTEEN PIECES EMBROIDERY
- 94—LOT OF TWENTY PIECES
- 95—TEMPLE HANGING  
Fine Old Piece, with Dragons Worked in Soft Tones. Purchased from an Old Temple by the Late Surg.-Gen. Sternberg, Many Years Ago in Japan. A Museum Piece. *Size 98x75 Inches.*
- 96—TABLE COVER  
Chinese Cut Velvet in Soft Grey Tones.
- 97—ALTAR CLOTH  
Orange Silk Embroidered in Gold Thread. From Foochow.
- 98—TEMPLE HANGING  
On Heavy Red Cloth, with Designs of a Temple, Deer, Storks, Bats and Flowers. *Size 102x26 Inches.*
- 99—SILK RUNNER  
Dark Red, Embroidered with the Taoist Gods, and with Inscriptions Painted in Gold Characters.
- 100—OLD FRENCH SHAWL  
Said to Have Once Belonged to Empress Eugenie. *Length, 63 Inches.*
- 101—ALTAR CLOTH  
Old Gold Embroidery on Orange Silk.
- 102—SILK RUNNER  
Bats and Peonies Embroidered in Red Cloth.
- 103—TABLE COVERS  
Circles with Enclosed Storks Embroidered on Red Satin. Two Pieces.
- 104—RUNNER  
Storks Embroidered on Red Satin. *Size 62x18 Inches.*
- 105—KIS-KELIM  
Suitable for a Rug or Couch Cover. From the Estate of the Former Councillor of the Russian Embassy, Washington.

- 106—KIS-KELIM  
Two Kis-Kelim Portieres Sewn Together for a Rug. Unusual  
Tones of Soft Greens and Blues. *Size 133x60 Inches.*
- 107—EGYPTIAN HANGING  
Applique. From Cairo. *Size 17x51 Inches.*
- 108—EGYPTIAN HANGING  
The Goddess Isis. *Size 56x25 Inches.*
- 109—PILLOW  
Made from Sacrificial Silk.
- 110—SUPERB TEMPLE HANGING  
A Large Chinese Hanging of Red Silk. Upon the Large Character  
for Long Life in the Centre are Seated the Nine Taoist Gods  
(Pa Hsien), a Dragon and Phoenix, Symbolic of the Powers of the  
Air are at the Top, and at the Bottom, Roaring Defiance, are  
Three Lions, Symbolic of the Power of the Earth. Profusely  
Embroidered with Birds and Flowers.  
*See Illustration.* *Size 129x72 Inches.*
- 111—APPLIQUE EMBROIDERY  
Lot of Ten Pieces.
- 112—APPLIQUE EMBROIDERY  
Lot of Ten Pieces.
- 113—MIRROR CASE  
A Very Old Silk Embroidered Case for a Temple Mirror.
- 114—CUT VELVET PIECES  
Two Specimens.
- 115—OLD HINDOO EMBROIDERY
- 116—OLD HINDOO COVER  
Red Embroidery on Yellow Silk. *Size 46x75 Inches.*
- 117—VASE FROM THE CENTENNIAL EXPOSITION IN PHILADELPHIA, 1876.  
Satsuma Porcelain Vase Exhibited by the Japanese Government.  
Tall Ovoid Form. Decorations of Numerous Fans in Relief,  
Each Minutely Decorated in Raised Enamels with Beautiful De-  
signs. Body Pattern of Fine Scroll Work, &c.  
*See Illustration.* *Height, 22 Inches.*

- 118—OLD KAGA KORO  
 Fine Old Koro with Cover, Eighteen Inches High. Signed. From the Estate of Rear Admiral R. D. Evans.  
*See Illustration.*
- 119—OLD HIRADO VASE  
 A Repousse Coiled Dragon Surrounds the Vase. Flying Storks at the Top. Formerly in the Loan Collection in the National Museum at Washington.
- 120—OLD HIRADO VASE  
 Ovoid Form, with Broad Flaring Top. Two Large Double Dragons Stand Out Around the Vase. Formerly in the National Museum.  
*See Illustration.*
- 121—OLD PORCELAIN VASE  
 Peony Designs Worked on a Light Tan Ground. Formerly Belonged to Surg.-Gen. Sternberg, U. S. A.
- 122—OLD CHINESE PORCELAIN BASIN  
 Flat Rim, with Design of Waves. Peach Branches and Fruit.
- 123—CHINESE PORCELAIN BASIN  
 A Deep Basin at the Bottom of Which are a Large Fish and Marine Animals Sporting in the Waves. Around the Sides are the Nine Taoist Gods (Pa Hsien).
- 124—OLD KUTANI VASE  
 Narrow Neck, with Four Extra Tubes. Designs of Villages by the Inland Sea in Soft Green and Blue Colorings. Eighteenth Century. Signed.
- 125—TAIZAN VASE  
 Black, with Medallions. Made by Kinkozan of Kyota.
- 126—OLD KUTANI KORO  
 Figures and a Village by the Sea. Soft Greens and Blues on Creamy White.
- 127—OLD SAKE BOTTLE  
 Brilliant Gold and Orange Tones. Decorations of Lions and Flowers. Signed.
- 128—PAIR OLD JAPANESE VASES  
 Raised Figures on a Dull Bluish Grey, Representing the Fable of the Badger and the Tea Pot, &c.  
*Height, 12 Inches.*

129—OLD VASE AND WATER BOTTLE

(A) Small Vase, with Frogs Resting on a Leaf.

(B) Scholars' Water Bottle, Found Near Nagasaki.

Both from the Collection of the Late Mr. Frederick May.

130—PAIR CHINESE PORCELAIN VASES

Decorations of Taoist Gods in a Boat. From Foochow.

*Height, 6 Inches.*

131—POTTERY FIGURE OF HOTEI

Hotei Seated, Surrounded by Five Children.

*Height, 11 Inches.*

132—PAIR OLD VASES PAINTED BY MASHA YOSHI (1761-1824)

Handles in Form of Roosters. The Decorations are in Medallions, One with Birds on a Branch, and the Reverse a Marine Scene. The Colors are Dull Reds and Blacks, Relieved by Small Insets of Blue and White. Signed on the Bottom: "A Studio in the Province of Kyoto. Made by Masha Yoshi." This Artist is Well Known to Print Collectors. His Prints are Scarce and Command a High Price.

*See Illustration.*

133—CHINESE GARDEN SEAT

Barrel Shape. Blue and White Porcelain, with Floral Designs, and Pierced Cash Emblem for Good Luck.

*Height, 19 Inches; Diameter, 12 Inches.*

134—OLD KAGA JARDINIERE

*Exhibited by the Japanese Government at the World's Fair in Chicago.* This Fine Piece has Good Tones of Cobalt Blue, Red and Gold Decorations on a White Background. It was Purchased by the Late Colonel Blount of Oaks, Washington, from the Japanese Government at the Close of the Fair.

*See Illustration.*

*Height, 16 Inches; Diameter, 24½ Inches.*

### OLD CHINESE WOOD CARVINGS.

135—THREE CARVINGS FROM NINGPO

A Sedan Chair, a Ricksha, and Group—A Wedding Breakfast.

136—PAIR OF BOOKRACKS.

Made from Carvings of Dongfu Dogs.

137—CAMPHORWOOD CANDLESTICKS

Carved in Lotus Flower Designs. From Foochow.



- 138—CANDLESTICK  
Camphorwood, Carved with Designs of Flowers and Leaves, and  
Which has been Converted into an Electric Lamp, with Wicker  
Shade, Lined with Yellow Silk.
- 139—CURIO CABINET  
Chinese Teakwood. Irregular Shape.
- 140—QUIVER  
Old Japanese Quiver, Inlaid with Ivory. It has the Tokogawa  
Crest.
- 141—PICTURE FRAMES  
Three Hand Carved Frames of Fine Ningpo Workmanship.
- 142—IDOL OF THE ELEVENTH CENTURY  
Fudo Myoo, the God of Hell. He has in One Hand a Cord with  
which to Bind the Souls of the Unrepentant, and in the Other a  
Sword with which to Decapitate them. Purchased from Mr.  
Bunkio Matsuka. Signed Piece.  
*See Illustration.*
- 143—TWO CARVINGS  
Boys Riding Water Buffalo. Inlaid with Silver Wire. From  
Foochow.
- 144—IDOLS FROM FOOCHOW  
Carved Wood Figures, Inlaid with Silver.
- 145—PAIR CANDLESTICKS  
Made from Two Old Gilded Idols.
- 146—PAIR WALL SCONCES  
Made from Key Shaped Pierced Carvings
- 147—TWO EBONY ELEPHANTS  
From Chunnakim, Ceylon.
- 148—PAIR OF BOOKRACKS  
Carvings of Ducks and Lotus Flowers.
- 149—PLAYING CARD HOLDERS  
Two Pieces.
- 150—PLAYING CARD HOLDERS  
Two Pieces.

- 151—ROOT CARVINGS  
 “Buddha’s Hand.” Two Pieces.
- 152—OLD WOODEN CHEST  
 Made from Old Carvings.  
*See Illustration.*
- 153—CARVED PANEL  
 Three Men Playing Chess.
- 154—OLD IDOL SHRINE
- 155—OLD IDOL SHRINE
- 156—OLD IDOL SHRINE
- 157—TEAKWOOD TRAY  
 Square Box Form, Inlaid with Mother-of-pearl Designs of Flowers,  
 and Buddhistic Emblems.  
*Size, 9¼ Inches Square.*
- 158—WOOD CARVING  
 Actors on a Stage.
- 159—SMALL SCREEN  
 Old Chinese Hand Painted Marble Plaque, Mounted as a Screen.
- 160—SMALL STAND  
 Four Old Gilt Idols Forming the Legs.
- 161—CHINESE MUSICAL INSTRUMENT
- 162—CHINESE SILK CANDLE SCREEN  
 Made from an Old Mandarin Badge, or Square. The Stand Sup-  
 ported by Three Small Idols.
- 163—SMALL CHINESE CABINET  
 A Redwood Slide Box, Containing Five Drawers.  
*Size, 6¾x5½x7 Inches.*
- 164—WALL BRACKET  
 Pierced and Relief Work Carvings.
- 165—CORNER BRACKET  
 With Carved Figures.
- 166—WALL SCONCE
- 167—SMALL MIRROR  
 Upright Form, with Carved Figures and Emblems.





No. 255



No. 235



No. 232



No. 80



No. 82



No. 80



- 168—MIRROR  
Two-panel Upright Frame, with Embroidery Panel.
- 169—FIRE SCREEN  
Old Carvings, Combined with Embroidery and Enamel.
- 170—HINDOO CARVED BOX
- 171—OLD CARVED IDOL  
Lacquer and Gold.
- 172—OLD CARVED IDOL  
Unusually Good Tones of Soft Reds and Gold.
- 173—CHINESE SIGN  
Sign of a Young Ladies' Singing School.
- 174—CARVED FIGURE OF A HORSE
- 175—CARVINGS  
A Fisher Woman Selling Fish to a Gentleman. Two Pieces.
- 176—CARVED WOOD IDOLS  
The Japanese Gods of Good Fortune. Nine Pieces.
- 177—THREE SIGNS  
Of a Dealer in Spring Water.
- 178—CARVING OF PEONIES  
On Panel.
- 179—FLOOR LAMP  
The Base is of an Old Carving, Representing a Boy Playing with a Lion, which is Chained to a Post, and Held by a Jade Ring. The Upright Piece is of an Old Chinese Gilded Carving of a Bird Perched on a Pine Tree.
- 180—LAMP SHADE  
Made from an Old Filipino Hat, with Chinese Silk Fringe to Match the Floor Lamp—No. 179.
- 181—PICTURE FRAME  
A Most Exquisitely Carved Piece of the Very Best Ningpo Workmanship. Two Dragons on the Sides and Two Fengshui Birds at the Top Between which is a Group of Chinese Gentlemen and a Boy Riding a Buffalo. Surmounted by Bats Flying Around the Sun. At the Base are Flowers and Foliage.

- 182—JAPANESE IDOL  
Ebusu, the God of Food, Riding on a Carp. Carved Wood.
- 183—JAPANESE CARVING  
Showing Warriors in a Battle.
- 184—CHINESE IDOL  
Finely Carved with a Dragon Coat. In One Hand He Holds a Silver Sycee—Indicative of Wealth, and in the Other a Sceptre—Power.
- 185—TEAKWOOD SCREEN  
Four Panels Inlaid with Mother-of-pearl, and with Blue Sacrificial Silk. The Woodwork Formed Part of a Larger Screen which Formerly was in the U. S. Consulate in Canton.
- 186—TABLE MIRROR  
Mounted on Stand. Teakwood, with Mother-of-pearl Inlay.

### EMBROIDERIES.

- 187—LUNCH SET  
Japanese Embroidery on Linen. Cherry Pattern. Thirteen Pieces.
- 188—LUNCH SET  
Hand Painted on Silk.
- 189—CANOPY  
Used Over an Idol in a Chinese Temple, Silk Embroidery.
- 190—TABLE COVER  
Grass Linen Embroidered, with Dragons.  
*Size, 53 Inches Square.*
- 191—TABLE COVER  
Grass Linen. Fine Filet Lace and Embroidery Done by the Chinese Ladies of the American Presbyterian Mission in Shanghai.
- 192—CANTONESE EMBROIDERED CURTAINS  
Light Blue Silk, Worked with Exceptional Care and Fineness, with Figures of Birds, Flowers and Bamboo Trees. Lined with Pongee.  
*Size, 144x27 Inches.*
- 193—SACRIFICIAL SILK  
A Piece from the Roll Intended to Have Been Burned at the Temple of Heaven by the Chinese Emperor.

- 194—BROCADED PICTURE  
A Hand Woven "Kussu" Picture.
- 195—ANOTHER
- 196—SET PLATE DOILIES  
Blue Embroidery in White.
- 197—SET PLATE DOILIES  
White, Embroidered in Blue.
- 198—LUNCH SET  
Grass Linen, with Cross-stitch Embroidery. Twenty-five Pieces.  
Done by Students in the American Mission.
- 199—RUNNER  
Two Fine Old "Kussu" Pieces Mounted on Blue Velvet.
- 200—RUNNER  
Old Chinese Brocade. Dragon Design.
- 201—ANOTHER
- 202—ANOTHER
- 203—HINDOO CUTCH EMBROIDERY  
An Old Table Cover.
- 204—ANOTHER
- 205—HINDOO COVER  
Embroidered in Yellow, with Miniature Mirrors Inserted.  
*Size, 5x6 Feet.*
- 206—SHOPPING BAGS  
Made from Old Chinese Embroidery. Six Pieces.
- 207—WHITE SILK BAGS  
Two Pieces.
- 208—CUTCH DANCING SKIRT  
A Very Old Hindoo Skirt, Embroidered with Peacock Designs on  
Old Red. From the Estate of F. P. Bhumgara.
- 209—CUTCH DANCING SKIRT
- 210—HINDOO TABLE COVER  
Old Yellow Silk, Embroidered in Red.

- 211—JAVA SARONG
- 212—JAVA SARONG
- 213—JAVA SARONG
- 214—OLD BOKHARA COVER
- 215—CURTAIN  
In Stenciled Wax. From Rangoon.
- 216—CURTAIN  
In Stenciled Wax. From Rangoon.
- 217—CURTAIN  
In Stenciled Wax. From Rangoon.
- 218—SMALL TABLE COVERS  
Of Stenciled Wax. Two Pieces.

### BRONZES.

- 219—JAPANESE BRONZE GROUP  
A Man Fighting the Sea Dragon. A Deftly Wrought Work.  
From the Estate of General Breckenridge.
- 220—METAL SIDE BRACKET LAMP  
Estate of Mr. J. Henley Smith.
- 221—BRONZE INCENSE BURNER  
Figure of a Man Holding an Urn on His Extended Arm. On Top  
the Figure of a Boy. Estate of General Breckenridge.
- 222—BRONZE INCENSE BURNER  
Elephant Supporting a Pagoda on His Back.
- 223—CHINESE STIRRUP  
Broad Flat Rest, Suitable as a Card Tray.
- 224—SWORDS AND DAGGER  
(A) Sword Captured from Major Enrique Barstee, Aid-de-camp  
to Aguinaldo.  
(B) Roman Sword with Brass Hilt.  
(C) Small Dagger.  
Estate of Maj.-General Bates, U. S. A.
- 225—MORO SWORD  
With Sheath.



- 226—MORO SWORD  
With Sheath.
- 227—JAPANESE SWORD  
Guard has Design of a Man Fishing, with Pine Trees and a Waterfall.
- 228—DAGGER AND TWO SMALL SWORDS
- 229—MORO SWORD  
In a Sheath.
- 230—BRONZE GROUP  
Horse and Attendant. A Very Fine Statue, from the Estate of Mrs. George Lathrop Bradley, of Washington.  
*See Illustration.* *Height, 23 Inches.*
- 231—BRONZE PLACQUE  
Taking Jesus Down from the Cross. Repousse in Oval. From the Estate of Rear Admiral R. D. (Fighting Bob) Evans.
- 232—BRONZE EAGLE  
With Outstretched Wings, Poised on a Crag. From the Estate of Col. Blount, The Oaks, Washington.  
*See Illustration.* *Height, 23 Inches; Spread, 35 Inches.*
- 233—PAIR DRAGON CANDLESTICKS  
Each Dragon Holding Cups in Its Claws.
- 234—BRONZE FLOWER HOLDER  
Supported on the Crest of Breaking Waves.
- 235—LAMP  
A Large Dragon Supporting a Bronze Bell. Has been Converted into a Unique Electric Lamp.
- 236—HIBACHI  
A Fine Old Hibachi, with Unusually Fine Patina. The Panels on the Sides are in Raised Designs of Dragons and Peonies Done in Bronze, while the Body is Old Cloisonne.
- 237—SMALL BRONZE KORO  
Resting on Three Lion Heads. The Handles are Sheep Heads.  
*Height, 10 Inches.*
- 238—PAIR ROMAN LAMPS  
Bird Design. From Estate of Mr. J. Henley Smith.
- 239—POMPEIAN JUG  
Old Roman Bronze Jug Said to Have Been Excavated from Pompeii. Purchased by the Late Col. Blount in Rome about 1880.





## SECOND AFTERNOON'S SALE

TUESDAY, OCTOBER 25, 1921

BEGINNING AT 2 O'CLOCK

---

- 240—PAIR OLD CHINESE BRONZE SACRIFICIAL VASES
- 241—BRONZE BOWL  
Raised Bust of a Boy in the Centre. Very Odd.
- 242—LARGE FIGURE  
"Cootie," a Monkey.
- 243—BRONZE JARDINIÈRE  
Around the Side are Raised Figures of Greek Divinities.
- 244—LARGE BRONZE REPLICA  
Column Vendome, Paris. J. Henley Smith Collection.  
*Height, 33 Inches.*
- 245—STONE COLUMN  
Imperfect.
- 246—CHINESE BRONZE GROUP  
An Old Mandarin on Horseback, the Horse Led by an Attendant.
- 246A—CYLINDRICAL VASE  
With Coiled Dragon.
- 247-248—ELECTRIC LAMPS  
Two Lotus Flowers Forming Lamps, and a Small Bird. Two Pieces.
- 249—CHINESE BRONZE SACRIFICIAL BOWL  
Very Old, with Fine Patina. The Design is Enclosed in a Broad Rim Extending Around the Top. In This is a Man Crossing a Bridge, Houses and Landscapes. Nondescript Handles. From Foochow.  
*See Illustration.*  
*Depth, 8½ Inches; Diameter, 11½ Inches.*
- 250—TOM-TOMS  
Used by the Moros. Three Pieces.

- 251—TOM-TOMS  
Two Pieces.
- 251A—CHINESE BRUSH HOLDER  
With Raised Butterflies.
- 252—CHINESE VASE  
Sacrificial "Ku" for Holding Wine in Sacrifices.  
*See Illustration.*
- 253—CHINESE VASE  
Bronze Flaring Top Vase, with Lion Head and Ring Handles.
- 253A—OLD ROMAN LAMP
- 254—BRONZE FIGURE  
Crouching Lion.
- 254A—PAIR JAPANESE BRONZE ELEPHANTS
- 255—LARGE TEMPLE INCENSE BURNER  
A Fine Old Japanese Temple Koro, with Cover. Repousse Decorations of Birds Perched in the Branches of a Tree. The Bowl is Supported by Four Ogre Heads which Rest on a Base Decorated with Scroll Work. The Cover is Decorated with a Rooster, Hen and a Chicken. The Patina is Unusually Good.  
*See Illustration.*  
*Height, 27 Inches.*
- 256—BRONZE VASE  
In the Shape of a Basket.
- 256A—ODD JAPANESE CANDLESTICK  
Two Firemen on the Ground, and Another Climbing a Ladder.

### BRASS WARE.

- 257—BRASS FIGURES FROM JAIPUR  
A Lion Killing a Deer, and a Woman Grinding Corn. Two Pieces.
- 258—JAIPUR GROUP  
The Lion Hunt.
- 259—CHINESE BRASS BELL  
Raised Dragon Decorated on Sides, and Two Smaller Dragons Making the Handle. With Carved Stand.





- 260—ROMAN LAMP  
Pan's Head Resting on a Claw Foot.
- 261—ROMAN LAMP  
Bacchus.
- 262—ROMAN LAMP  
A Man Astride a Horse.
- 263—ROMAN LAMP  
The Handle Formed by the Cross and the Sacrificial Lamb,  
Emblems of the Early Christians.
- 264—JAIPUR FIGURES  
Fakir with Begging Bowl, A Man with Two Apes, &c. Three  
Pieces.
- 265—CHINESE INCENSE BURNER  
Repousse Dragons Coiled Around the Sides, Handles in Form of  
Elephants' Heads, and the Top a Deer.
- 266—HINDOO BELLS  
Handles Representing the God Krishna. Two Pieces.
- 267—SACRIFICIAL URN  
The Form of a Lotus Seed Pod, with a Lotus Leaf Top. From  
Fenchowfu, Shansi.
- 268—JAIPUR FIGURES  
Snake Charmer, &c. Two Pieces.
- 269—INCENSE BURNER  
The Bowl is Designed of Leaves of the Lotus. Buds and Flowers  
of Lotus are Twined around it, while the Handle is of Twisted  
Stems and the Base a Lotus Leaf.
- 270—INCENSE BURNER  
Two Chinese Plain Brass Incense Burners.
- 271—CHINESE BRASS INCENSE BURNER
- 272—BOWL AND ORNAMENT  
(A) Turkish Engraved Bowl, Eight Inches Diameter.  
(B) Top of a Pilgrim's Staff, Purchased from a Pilgrim as He  
was Ascending Mt. Fujiana.

- 273—THIBETAN COVERED BOWL  
Brass Bowl from Lassa, Thibet. Decorations of Demons. Purchased in Darjeeling by F. P. Bhungara.
- 274—THIBETAN VASE  
Coiled Serpents Embossed on the Sides. From Lassa.
- 275—KOREAN DISKS  
Used as Gongs to Expel Devils from the Home. Estate of Dr. Edwin Bliss.
- 276—BRASS FRUIT BOWL  
Engraved with Crest of the Mikado of Japan and with Scrolls and Flowers.
- 277—KOREAN CANDLESTICKS  
Pair Old Korean Brass Candlesticks, with Reflectors in the Shape of Butterflies.
- 278—CHINESE CHARCOAL FOOT STOVE
- 279—CHINESE CHARCOAL FOOT STOVE
- 280—INCENSE BURNERS  
Three Pieces.
- 281—CARVED BRASS TRAY  
With Tea Pot and Strainer.
- 282—TURKISH COFFEE POT  
And a Coffee Grinder.
- 283—HINDOO BOWL  
Repousse Figures of the Battle of the Monkey Demons, as Described in the Ramayama. From Poona.
- 284—HAND CARVED BOOKRACK  
And a Small Dragon.
- 285—BRASS VASE  
With a Coiled Lizard.
- 286-287—OLD ENGRAVED JARDINIERES  
From Damascus.
- 288—COPPER DIPPER  
Used in Japanese Marriage Feasts. Handsomely Engraved. This has been in a Loan Exhibit in the National Museum, Washington, D. C.

- 289—OLD SPANISH CANDLESTICK  
The Base in Form of a Three-leaf Clover. Picked up in Havana.
- 290—RUSSIAN SAMOVAR
- 291—CHINESE SAMOVAR
- 292—TWO PLACQUES  
One of Don Pedro, Doge of Venice, and the Other a Figure of a Flemish Horseman.
- 293—ANTIQUÉ MORO "BOWIE" BOXES  
Used for Holding Lime Preparation for Chewing Betelnuts. Two Pieces.
- 294—ENGRAVED BRASS CHINESE BOXES  
Three Pieces.
- 295—CHINESE TRAY  
Engraved with Dragons. From Foochow.
- 296—TWO CHINESE BOXES
- 297—LARGE MORO BRASS BOX  
Old.
- 298—MORO BOWL  
And Set of Chinese Cooking Dishes.
- 299—FINE MORO "CHOW" DISH  
With Embossed Cover.
- 300—CHINESE CHAFING DISH  
With Lamp.
- 301—CHINESE TRAY  
Leaf Design.
- 301A—CHINESE MANDARIN HAT BAND

### LAMPS

- 302—CHINESE BRASS CHARCOAL STOVE  
Converted into an Electric Lamp. With Parchment Shade Decorated with Lichee Fruit.
- 303—BRASS VASE  
A Procession of Elephants in Raised Designs Around the Body. Converted into a Lamp. With Brass Iris Shade.



- 304—TURKISH PIERCED WORK HANGING LAMP
- 305—CHINESE MELON SHAPE VASE  
Made into a Lamp.
- 306—BRASS VASE  
Old "Ku" Converted into a Lamp.
- 307—HAMMERED BRASS LAMP  
Bowl in Form of a Lotus Flower Supported on a Stem from a Large Leaf which Form the Base. Tinted in Red and Gold Shades.
- 308—MANDARIN PORCELAIN HAT STAND  
Converted into a Lamp. Shades of Yellow with Designs of Dragons Done in Rose, Grey, and Green. Lamp Shade Made from a Chinese Skirt of Nile Green Silk, with Chinese Fringe.
- 309—LARGE TURKISH MOSQUE LAMP  
Fine Damascus Pierced Brass Work. From Estate of Mr. J. Henley Smith.
- 310—CHINESE WOOD CARVINGS  
Converted into a Lamp and Mounted on Teak Stand.

### CLOISONNE

- 311—DARK BLUE VASE  
Dragon Design in Brilliant Colors.
- 312—HAWTHORNE VASE  
Light Green.
- 313—PAIR VASES  
Light Cream Ground (One Imperfect). From the Estate of Hon. Leslie M. Shaw, Formerly Secretary of the Treasury.
- 314—TALL VASE  
Pink Morning Glories on a Light Blue Ground.
- 315—TALL VASE  
Designs of Iris and Storks in Dull Blue.
- 316—PEKINGESE VASE  
Excellent Workmanship, but Slightly Dented.
- 317—OLD WINE POT AND TRAY  
Made During the Reign of Chien Lung. (Both Pieces Damaged.)



- 318—CIGARETTE CASES  
Two Pieces.
- 319—PAIR SMALL PEKINGESE ENAMEL VASES  
Dragon Designs.
- 320—OLD CHINESE HAND MIRRORS  
One with Old Enamel Back and One in Carved Ivory. Two Pieces.
- 321—RUSSIAN ENAMEL TEA CADDY AND TRAY  
Two Pieces.
- 322—CHIEN LUNG WINE CUPS  
Set Old Enamel Wine Cups. Square Form. In the Original Case.
- 323—CLOISONNE UMBRELLA HANDLES  
Two Pieces.

### IVORY

- 335—CARVED NAPKIN RINGS AND CANTONESE PAPER KNIFE  
Three Pieces.
- 336—CHINESE CUPS  
For Holding Scholars' Brushes. Two Pieces.
- 337—CARVED BRUSH HOLDER AND VASE  
Two Pieces.
- 338—HAND MIRRORS  
One Exceptionally Well Carved, with Old Tracery.
- 339—OFFICIAL SEAL FROM AN OLD WAT TEMPLE IN BANGKOK  
The Bottom is Carved with the Image of an Idol.
- 339A—CHINESE BRASS SEAL

### SILVERWARE

- 340—STERLING SILVER CIGARETTE CASE  
With Embossed Chrysanthemums.
- 341—SILVER CARD CASE  
An Old Family Heirloom of the McGowans. It is Engraved with Old Colonial Buildings, and has "Philadelphia" Written in Pencil Inside the Cover. Purchased at the Sale of the Effects of Rear-Admiral David B. Harmony.

- 342—CHINESE SILVER UMBRELLA HANDLES  
Two Pieces.
- 343—SET OF SIX MENU CARD HOLDERS  
Design of a Spider in the Centre of a Web.
- 344—PEPPER SHAKERS  
Form of Bamboo. Two Pieces.  
(B) Vinegrette Bottles. Two Pieces.
- 345—HINDOO SOLID SILVER CARD CASE  
Exquisite Workmanship in Scroll Designs.
- 346—SILVER FIGURES FROM CANTON  
Rickshaw and an Arm Chair. Two Pieces.
- 347—SILVER MINIATURES  
A Sampan. A Man Fishing with Cormorants, and an Official  
Sedan Chair. Three Pieces.
- 348—CARD CASE HOLDER
- 349—LARGE SPOON  
White Shell, with a Dark Horn Handle Tipped with Silver. Can-  
tonese.
- 350—SILVER CABINET SPECIMENS  
Four Pieces.
- 351—SOAP BOX  
Sterling Silver in the Finest Cantonese Work.

### PIPES AND CIGARETTE HOLDERS

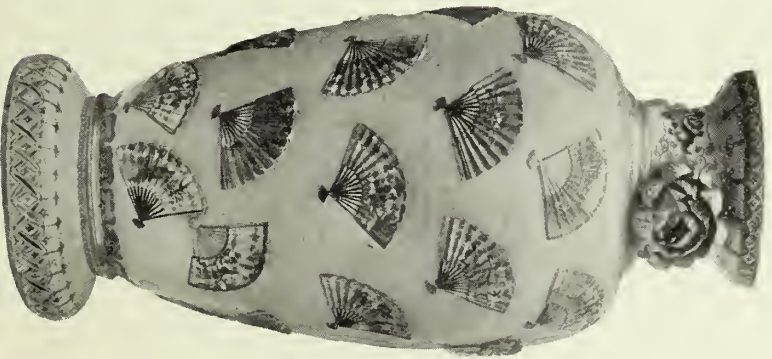
- 352—LARGE OPIUM PIPE AND BOWL
- 353—IVORY CIGARETTE HOLDERS  
Two Pieces.
- 354—IVORY CIGARETTE HOLDERS  
Two Pieces.
- 355—INLAID PIPE AND IVORY BRUSH VASE  
Two Pieces.
- 356—CHINESE WATER PIPE  
Blue Enamel Case.



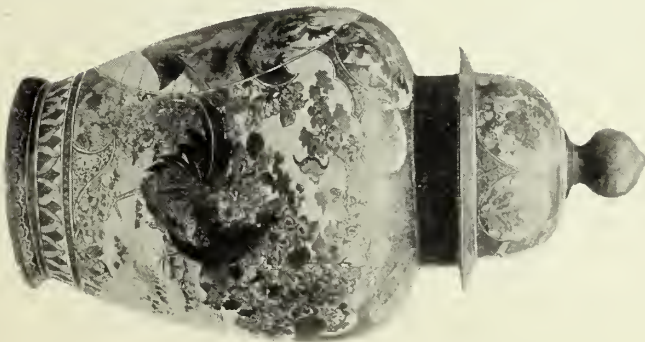
No. 445



No. 446



No. 117



No. 118



357—PIPE HOLDER AND TOBACCO POUCH

An Old Japanese Ivory Pipe Holder Reinforced with Silver Bands. It is Carved with Design of a Boy Riding a Water Buffalo. The Leather Pouch has the Crest of the Tokogawa Family. A Fine "Ojimi" Bead of Silver Appended. From Estate of Mr. Frederick May.

357A—PIPE, PIPE HOLDER AND POUCH

The Pouch Holder is in the Form of Buddha's Fingers.

358—JAPANESE PIPE

With Holder and Pouch. Also a Turkish Cigarette Holder, Turkish Pipe and Two Alaskan Pipes. As Five Pieces.

359—OLD CARVED WOOD PIPE

Engraved with Date—Pesth, 1787. Silver Mounted.

### JADES

360—MUTTON FAT JADE FIGURE

Cow.

361—SMALL CARVED BROWN JADEITE SCREEN

362—CARVED DISK PENDANTS

Two Pieces.

363—JADE BUTTERFLY PENDANT

364—FOUR JADE CARVINGS

365—CARVED JADE DOUBLE PENDANTS

Three Pieces.

366—INKWELL

Made from an Archer's Thumb Ring. Also a Pendant of the God of Long Life.

367—APPLE GREEN JADE BUTTERFLY BROOCH

368—APPLE GREEN JADE BROOCH

Mounted in Silver Filigree.

369—JADE NECKLACE

Of Bars and Beads, Joined Together with Silver.

370—FINGER RING

Apple Green Jade Carving of the God of Long Life with His Deer.

- 371—WHITE JADE DOUBLE PENDANTS  
Three Pieces.
- 372—WHITE JADE RINGS  
Two Sets.
- 372A—WHITE JADE DOUBLE PENDANTS  
Two Pieces.
- 373—JADEITE BRACELETS  
Two Pieces.
- 373A—JADE BUTTONS  
Five Pieces.
- 374—NECKLACE OF GRADUATED JADE BEADS
- 375—NECKLACE OF GRADUATED JADE BEADS

### SOAPSTONE CARVINGS

- 376—PAIR OLD LION SEALS  
From Peking.
- 377—PAIR LARGER SEALS  
Carved with Dragons.
- 378—TWO MODERN SOAPSTONE CARVINGS  
With Receptacles for Holding Water for a Chinese Scholar.
- 379—TWO SOAPSTONE CARVINGS
- 380—TWO SOAPSTONE CARVINGS
- 380A—TWO SOAPSTONE CARVINGS
- 381—THREE SMALL STANDS
- 382—GROUPS OF IDOLS  
Sons, Long Life and Happiness, with Attendants.

### PLATES, DISHES AND TEA SETS

- 383—BLUE AND WHITE PLATTER  
Date 1840. Has Map of Japan.
- 384—CHINESE DISHES  
From Peking. Blue and White, with Designs of Phoenix.

- 385—OLD PLATE  
Marked Cheng Wha (Ming Period, 1467-87). Repaired.
- 386—OLD PLATES  
From Peking. Repaired. Two Pieces.
- 387—OLD CHINESE PLATE  
Phoenix Design.  
*Diameter, 13 Inches.*
- 388—OLD CHINESE PLATE  
Four Medallions in Red on a White Background.
- 389—OLD CHINESE PLATE  
The God of Longevity Stealing the Peaches from the Peach Tree of Mortality.
- 390—OLD CHINESE PLATES  
Boys Playing in the Dragon Procession. Two Pieces.
- 391—OLD CHINESE PLATE  
From Peking. Chrysanthemums in Blue, Red, Pink and Yellow, on a White Background.  
*Diameter, 13 Inches.*
- 392—OLD PLATE  
From Peking. Peonies and Chrysanthemums in Shades of Rose and White.
- 393—OLD CEYLON PLATE  
Bats and Peaches Done in Cobalt Blue. Probably a Ming Piece.
- 395—OLD PLATE  
Peking. Vases and Flower Boxes Filled with Peony, Chrysanthemum, Plum and Lotus, Indicative of the Four Seasons. Also Designs of "Buddha's Hand," Pomegranites and Peaches, Wishing Son's Long Life and Happiness.  
*Diameter, 16 Inches.*
- 396—OLD PLATE OF CHIEN LUNG PERIOD (MARKED)  
The Peach Tree of Immortality is Laden with Fruit. Two Bats, Indicative of Happiness. The Bottom of the Plate is Also Decorated with a Branch of a Peach Tree and Peaches. Signed—"Chien Lung Period Made."  
*Diameter, 13½ Inches.*



- 397—OLD PLATE  
 From Peking. This Old Plate has Exquisite Coloring. Two Mandarin Ducks are Swimming in a Lotus Pond. The Leaves of the Lotus have a Fine Iridescence and the Flowers are a Lovely Deep Rose.
- 398—OLD PLATE  
 From Peking. Rose Colored Peonies and Green Leaves in a White Ground.
- 399—TWO OLD PLATES  
 Blue Flowers and Leaves on a Light Grey Background.  
 (B) Two Birds Perched in a Tree, with Peonies on White Ground.
- 400—TWO OLD PLATES  
 (A) Old Medallion from Canton. Ladies Grouped Around a Table in a Tiled Courtyard. Fine Tones of Blues, Rose and Green. From Admiral R. D. Evans' Sale. (Slightly Chipped.)  
*Oval Plate, 10 $\frac{3}{8}$  Inches.*  
 (B) Blue and White, with the Design of a Carp. From Foochow.  
*Diameter, 9 Inches.*
- 401—OLD CANTON PLATE  
 Designs of Various Emblems. Two Pieces.
- 402—OLD BOWL  
 Deep Orange Band, with Landscapes Done in Gold. Inside is of Deep Crackle Green. Signed—Tung Chih (1862-74).
- 403—OLD DISH  
 Shape of a Flower, with Six Petals. Signed.  
*Top 9 $\frac{1}{2}$  Inches.*
- 404—SMALL BOWL  
 Deep Rich Red Glaze, with Tones of Purple.
- 405—SANG-DE-BOEUF BOWL  
 Deep Rich Red Tones from Copper.  
*Diameter, 9 Inches.*
- 406—OLD JAPANESE DISH  
 In Form of a Bucket and a Small Gravy Dish, with Design of. Hotei Inside.
- 407—CHINESE FOOTED DISH  
 Designs of Red Dragons on White. Has Receptacle for Hot Water

- 408—TWO OLD JAPANESE PLATES  
Chrysanthemums in Salmon Pink. Three Chrysanthemums in  
Raised White Enamel and Dahlias in Grey and Yellow.
- 409—EGG SHELL TEA SET  
Fine Kutani Ware. Various Decorations. Twenty-nine Pieces.
- 410—SET KUTANI SIDE PLATES  
Shape of Clam Shells. Nine Pieces.
- 411—ORANGE LUSTRE TEA SET  
Fifteen Pieces.
- 413—PAIR JAPANESE PORCELAIN TRAYS  
Designs of Maple Trees. The Ground is Cobalt Blue and Below  
are Waves, Indicative of the Sea.
- 414—CHINESE TEA POT  
Form of a Peach. Yellow Background.
- 415—CHINESE TEA POT  
Form of a Peach. Blue Background.
- 416—PAIR CHINESE TEA CUPS  
With Covers and Stands.
- 417—OLD GREEN AND GOLD MEDALLION SOUP TUREEN  
Imported over a Hundred Years Ago in a Sailing Vessel and Be-  
longed to a Set which has been in a Virginia Family ever since.  
Mr. Osgood purchased it from the Great Grandniece of the Cap-  
tain of the Vessel, who is now an Aged Lady. The Old Dull Back-  
ground Brings Out the Exquisite Workmanship of Birds and  
Flowers.  
*Height, 10 Inches.*
- 418—GREEN AND GOLD COVERED JAR  
With a Brilliant Orange Coloring of Kylins and Flowers. From  
the Estate of Rear-Admiral Evans.
- 419—OLD CHINESE TEA POT  
Lions in Orange on a White Ground. (Top Missing.)
- 420—TWO PORCELAIN BOWLS  
Raised Dragons in Blue. Signed. From Foochow.
- 421—TWO MORE  
Repaired.

- 422—CHINESE FRUIT STANDS  
Footed Stands, with Figures of Chinese. Two Pieces.
- 423—OLD RAKU BOWL  
With Fuji Mountain Done in Deep Blue on a Brown Background.  
Period 1750. From Collection of Mr. Fredk. May.
- 424—RARE RAKU BOWL  
In Brilliant Metallic Black Lustre. Period of 1740. It was Re-  
paired Years Ago in Japan with Gold Inlay. From Estate of Mr.  
Fredk. May.  
*Collectors claim that it is impossible to reproduce this Glaze.*
- 425—PEACHBLOW JAR  
Made by Sifu Yohei, about 1840. Signed.  
(B) Kutani Tray.
- 426—CHINESE BOWL  
Imperial Piece. Decoration of a Five-clawed Dragon in Salmon,  
with a Band at the top of blue with white flowers. Signed Kuang  
Hsi (1875-1908).
- 427—CHINESE BOWLS  
Scholars' Bowls. Designs of Boys at Play. Two Pieces.
- 428—CHINESE VASE  
Dark Lustre Ware, with Raised Figures of Goats.
- 429—OLD IMARI PLATTER  
A Fish (Flounder) in brilliant old Cobalt Blue and Red. (Slight  
Crack in the Tail).
- 430—TALL PORCELAIN FIGURES  
God of Longevity in Robes of Yellow and Blue, Decorated with  
Designs of Peaches, Bats and Longlife Characters.  
*Height, 17 Inches.*
- 431—TALL PORCELAIN FIGURE  
God of Official Appointment. In Robes of Red and Blue.  
*Height, 17 Inches.*
- 432—TEA CUPS AND SAUCERS  
Eleven Pieces.
- 433—PAIR OLD CHINESE JARS  
Background of Powder Blue with Medallions of White, with Four  
Smaller ones. Wooden Rims. From Foochow.  
*Height, 6 Inches.*



No. 249



No. 134



- 434—PAIR OLD TEA JARS  
Medallions on Powder Blue. Porcelain tops. From Foochow.
- 435—POTTERY FIGURE OF HOTEI  
Hotei Carrying a Boy Suspended by a Sling.
- 436—CHINESE IDOL  
Confucius. With a Green Glaze.
- 437—TALL PORCELAIN TEA POT
- 438—PAIR OLD SAKI BOTTLES  
Lovely red tones combined with Orange and Gold. Two Medal-  
lion Decoration, showing men around a table engaged in Chess,  
Music and Writing. Made prior to 1850 (one bottle chipped).  
From Estate of Rear Admiral Evans.  
*Height, 10 Inches.*
- 439—TWO OLD TILES  
One from the Temple of Heaven, Peking, the other from the Im-  
perial Palace.
- 440—OLD DELFT TOBY JUG  
Blue and White.
- 441—MEXICAN POTTERY  
Wine Pot and Small Tray. (Rear Admiral Evans Collection).
- 442—OLD MEXICAN JUG  
In Form of a Badger.
- 443—BLACK SATSUMA BOWLS  
Two Pieces.
- 444—CHINESE CELADON DISH  
Leaf Shape.
- 445—LIMESTONE CARVING OF A LOHAN  
Old Japanese Carved Idol, with Inscriptions, Carved in Stone.  
*See Illustration.*
- 446—LIMESTONE CARVING OF A LOHEN  
Similar to the foregoing, but much larger.
- 446A—ANCIENT MARBLE CARVING
- 447—OLD PORCELAIN GROUP  
Two Men returning from a Saki Party.



- 448—CELADON PORCELAIN FIGURE  
Ebusu, God of Food, Riding a Carp.
- 449—OLD ENGLISH DISH  
(Damaged). Ridgway.
- 450—SET YECKLING CUPS AND TEA POT  
Dark Brown Stoneware, made at Hy Hsing, Province of Keangsu.
- 451—JAPANESE TEAPOTS  
Rare Specimens and a Museum Piece. Five Pieces.
- 452—TEA CUPS  
Old Wedgwood and Spode. Two Pair.
- 453—PAIR KYLINS.  
Orange, with Flowers, Rose Shades. Suitable as Book Rack.
- 453A—TALL JARDINIERE  
Exquisite Decorations in Deep Tones of Blue, Red, &c. Figures  
in Garden representing a Marriage Ceremony. Imperial Hall  
Marks.

## JEWELRY

- 454—CORAL NECKLACES  
With Pendants Ornamented with Kingfisher Feathers. Two Pieces.
- 455—CORAL NECKLACES  
Similar. Two Pieces.
- 456—SILVER ENAMEL CHAIN AND PENDANT  
And a Butterfly Pendant. From Canton. Two Pieces.
- 457—SILVER CHAIN  
With Aventurine Stones.
- 458—CAMEO BROOCHES  
Two Old Pieces.
- 459—NECKLACE OF GRADUATED AMETHYST BEADS
- 460—SILVER NECKLACE  
with Nine Green Jade Drops.
- 461—SILVER NECKLACE  
With Chinese Chalcedony Drops.
- 462—THREE GREEN JADE PENDANTS



- 463—FACETED AMBER PENDANT
- 464—AMBER AND JET NECKLACE
- 465—OLD WHITBY JET NECKLACE  
And a Silver and Jet Necklace.
- 466—CUT AMBER NECKLACE  
Of Graduated Beads.
- 467—PAIR JADE EARRINGS  
In Apple Green.
- 468—LARGE RED AMBER CARVED PENDANT
- 469—BROOCHES  
Made from Old Japanese Ornaments, with Figures executed in  
Gold and Silver on Bronze.
- 470—FINGER RING  
Green Jade Carving of the God of Long Life.
- 471—FINGER RING  
Lapis Lazuli in Silver Leaf Setting.
- 472—GOLD BRACELET  
Form of a Flexible Snake, with Ruby Eyes and a Green Jade Bead  
on its Head.
- 473—DOG COLLAR  
Six Green Jade Characters for "Happiness," Mounted in Gold.
- 478—BRACELET  
Of Three Green Jade Buddhas and a Finger Ring. Two Pieces.
- 479—AMETHYST  
Hand Carved Idol and Stand.
- 480—NECKLACE  
Silver Chain, with Garnet Drops.
- 481—BUTTERFLY BROOCHES  
Green Jade, Mounted in Silver. Two Pieces.
- 482—NECKLACE  
With Seven Stone Drops.

483—NECKLACE

With Nine Green Jade Drops.

484—HAIR ORNAMENT

Green Jade Pieces, Combined with Glass.

485—NECKLACE

With Seven Turquoise Matrix Drops and a Pendant.

486—NECKLACE OF GRADUATED APPLE GREEN JADE BEADS

## THIRD AFTERNOON'S SALE

WEDNESDAY, OCTOBER 26, 1921

BEGINNING AT 2 O'CLOCK

---

### ODD CARVINGS

- 487—CHINESE CRICKET CAGE  
Carved Ivory.
- 488—CARVED PIECES IN STONE  
The Campanile, Tower of Pisa and St. Peters.
- 489—WOOD CARVINGS  
Old Crucifix from Nuremberg and a Beaver Gnawing Tree (Japanese).
- 490—TORTOISE SHELL BOX  
A Bracelet and Carved Box.
- 491—LIBATION CUP OF CARVED RHINOCEROS HORN  
Ming Dynasty.
- 492—WHITE JADE VASE AND CHAIN ON STAND  
Two Pieces.
- 493—SMALL CARVINGS  
God of Long Life. From Foochow. Two Pieces.

### BOXES

- 494—OLD JAPANESE BOX.  
Has a Scepter and Rosary Embossed on Top.
- 495—CHINESE POTTERY BOX OF RED LACQUER  
Carved with Figures  
*Size, 6½ Inches Square.*
- 496—TEA CHEST  
Made into a Box.
- 497—OLD JAPANESE LACQUER BOX  
With Designs of Feathers, &c.  
*Size, 9x8 Inches.*

## JAPANESE PRINTS

497A—TOYOKUNI LADIES  
Two Prints.

498—TOYOKUNI LADIES  
Two Prints.

499—TWO PRINTS  
By Kumioshi.

500—TWO LANDSCAPES  
By Hiroshige.

## SURIMONO

The Surimono was a type of print not sold in the market. It was made upon special order of private individuals as a festival greeting, an invitation, memorial or an announcement.—Fick's Chats on Japanese Prints.

501—THREE SURIMONO  
By Hokei.

- (A) Lady with a Fan.
- (B) Boy Chasing a Rooster.
- (C) Warrior on Horseback.

502—THREE SURIMONO

- (A) A Man with a Doll.
- (B) A Lady with a Drum.
- (C) Two Ladies on a Platform.

503—THREE SURIMONO

- (A) Lady Reading a Book.
- (B) A Samurai.
- (C) Fishing in the Surf, by Hokisai.

504—THREE SURIMONO AND ONE PRINT

- (A) Lady Under a Cherry Tree.
- (B) Lady with a Book.
- (C) Table Loaded with Emblematic Gifts.
- (D) Print of a Mother and Her Child.

## JAPANESE BOOKS AND ART EMBLEMS

505—ALBUM OF PHOTOGRAPHS.  
Containing Forty-five Hand Colored Views of Japan.



No. 142



No. 230



- 506—TWO ALBUMS  
The Holy Lands of Buddhism, with Views of Temples and Idols in India, Burmah, &c.  
(B) Japanese Gardens.
- 507—PAIR DOLL CEREMONY SCENES  
Small Six Panel Screens with Small Prints, Pasted on a Background of Flecked Gold Paper.
- 508—DOLL CEREMONY SCREEN
- 509—DOLL CEREMONY SCREEN  
A longer one, with a Pine Tree, Cherry Tree, Waterfall and Birds.

### EMBROIDERY

- 510—HAND EMBROIDERED LUNCH SET  
Cherry Designs on Linen.
- 511—HINDOO CURTAIN  
Embroidered in Deep Claret Red, Silk Floss on a Grey Linen Ground, 128-130 Inches.
- 512—SOOCHOW CURTAIN  
Woven of Camel Wool in Soochow, China. Background of a Beautiful soft old Blue upon which are Stenciled in light black patterns designs of Vases with Flowers. A large Stork of brilliant plumage with Spread Wings occupies the centre. At the top and bottom are pairs of storks facing each other.  
*Size, 11x4 feet.*
- 513—SOOCHOW CURTAIN  
Mate to the above.
- 514—RUSSIAN DRESS OF HOMESPUN LINEN.  
Embroidered by hand.
- 515—TWO DRAPERIES FROM THE SULTAN OF MOROCCO  
These Embroideries Originally belonged to a set forming a Drapery given by the Sultan of Morocco to the late U. S. Senator X, together with a fine white Stallion. The Drapery formerly hung in his Harem.
- 516—CHINESE EMBROIDERED MATS  
Embroidered in Colored Floss with Storks. Seven Pieces.
- 517—CHINESE EMBROIDERY  
Collars and Tabs. Two lots.



- 518—OLD JAPANESE UNIFORM  
Embroidered in Gold Threads with Dragons and the Crest of the  
Doi Daimyos. Two Pieces.
- 519—SILK BROCADE TABOURET COVER  
Flowers and Leaves on a Background of Claret Red.
- 520-1—SATIN AND SILK HAND BAGS  
Four Pieces.
- 522—EMBROIDERIES FROM CAIRO  
Two Pieces.
- 523—PAINTED LUNCH SET  
Of Twenty-five Pieces, Wisteria Pattern.
- 524—OLD INDIA SHAWL  
Slightly Imperfect.
- 525—CHINESE ALTAR CLOTH  
Orange Satin Embroidered in Gold Threads touched with light  
blue, making a most pleasing combination. Design of a Vase in  
which is a Scepter, Pomegranates, &c.
- 526—PILLOW MADE FROM A FUKUSA  
Navy Blue Silk, Embroidered with Golden Brown Floss with  
Designs of Fighting Falcons.
- 527—PILLOW MADE FROM A FUKUSA  
Cosmos Flowers on a Golden Brown Background.
- 528—BROCADE RUNNER.  
Birds and Flowers marked in Gold and Silver threads on a red  
satin ground.
- 529—SLEEVE BANDS  
Embroidered in Gold and Silver Threads, &c. Two Pair.
- 530—SLEEVE BANDS  
Dragons and Kyilins on Pink and Blue Silk. Two Pair.
- 531—SLEEVE BANDS  
Phoenix and Dragon Kylin and Phoenix. Two Pair.
- 532—EMBROIDERIES ON RED CLOTH  
Long Scarf and a Table Top. Stork Designs. Two Pieces.

- 532A—THREE PAIR OF SHOES AND A WIG  
Manachurian Lady's High Shoes, Chinese Shoes for a Bound Footed Woman, &c.
- 533—JAPANESE ARMOR  
Old Japanese Armor. On the Collar is a Swastika Crest, which was the Emblem of the Matsudaira Family, Daimyos of the Province of Mukawa.
- 533A—PAIR PORCELAIN "ELEPHANT" PEDESTALS  
Blue Elephant with a Green Howdah, forming a Stand.  
*See Illustration.*  
*Height 20 Inches, Length 28 Inches.*
- 534-36—OLD JAPANESE TEMPLE TASSELS  
Of Dark Red Silk and Others. Three Pieces.
- 537—TWO SMALLER TASSELS  
And Piece Old Battic Work on Leather, with Crest.
- 538—LARGE CAMEL WOOL RUG FROM SOOCHOW  
Design of a Bamboo Tree in Brown on a Yellow Background.
- 539—CAMEL WOOL RUG  
With "Shou" Characters.
- 540-540A—JAPANESE WASH BASINS  
Black Lacquer, Decorated with Storks. Two Pieces.
- 541—PICTURE FRAMES  
Made of Chinese Embroidery Work. Two Pieces.
- 542—INDIAN BASKETS  
Made by an Old Woman of the Hopi Tribe. The ends of the coil are jagged, showing her life is worn out. With two other Specimens. Three Pieces.
- 543—POI BOWL  
Chiefs Wooden "Poi" Bowl from the Hawaiian Islands.

### CHINESE MODERN PAINTINGS

- 544—PAINTINGS ON SILK  
From Foochow. Two Pieces.
- 545—TWO MORE
- 546—TWO MORE

547—TWO MORE

548—TWO MORE

549—TWO MORE

550—LANDSCAPES PAINTED ON BROWN SILK  
Three Pieces.

551—LANDSCAPES PAINTED ON BROWN SILK  
Three Pieces.

552—FRAMED PAINTINGS

(A) Two Quail on a Bank.

(B) Two Birds Perched on a Plum Tree.

553—MODERN SCROLLS FROM FOCHOW

(A) The God of Han Chung Li Riding on a Tortoise. In his Hand is the Fan with which he Fans Back to Life the dying. Riding in the Air on a Phoenix is Han Hsiang Tzie, who plays the Flute.

(B) Li Tich Kuai stands on a Dragon, nearby is Len Tung Pen with his Sword.

554—JAPANESE PRINTS

(A) Original Print from the Takaido Road Set.

(B) Reprint from Tokaido Road Set, a View of Tuji.

555—FRAME PRINTS

Chinese Boys at Play. Three Pieces.

556—FRAMED PRINTS

Chinese Boys at Play. Three Pieces.

## PAINTINGS.

557—PAINTED PORTRAIT OF THE EMPRESS DOWAGER

In a Frame most Elaborately Carved with Dragons.

The Painting was made by a Chinese Artist, who unfortunately lived in a house opposite the spot where the German minister, Von K Keleler was killed during the "Boxer" troubles. When the Germans started their punitive expeditions they locked him up and bayoneted him. The likeness is a very close one to the Carl Painting now in the National Museum at Washington, which was given to the U. S. by the Chinese Government.

- 558—OLD CHINESE PAINTING  
On Silk. Representing a Chinese Lady and Her Attendants  
Seated under a Tree. One Attendant is Reading and the other has  
a Fan.
- 559—WATER COLOR PAINTING OF A WATERFALL  
Purchased from the Artist, Miss Chike Moromoto, of Nagasaki.  
Framed.
- 560—PAINTING  
Country Scene in Japan. By Miss Chike Moromoto. Framed.
- 561—PAINTING ON SILK  
Christening the Baby at the Temple.
- 562—SILK PAINTINGS  
Unmounted.  
(A) Boys at their Games.  
(B) Country Scene, by a Lakeside. Two Pieces.
- 563—SILK PICTURE  
Representing a Boating Scene. The Ladies are done in Raised Silk.
- 563A—PAINTING ON SILK  
Chinese Costumes. Four Pieces.

### KAIKAMONOS AND SCROLLS.

- 564—PAINTING ON SILK  
A Carp Swimming in the Water.
- 565—OLD CHINESE SCROLLS  
Parrots Painted on Silk.
- 566—SCROLL  
Old Painting of a Chinese Fisherman.
- 567—SCROLL  
Old Painting of Chinese Ladies. Done on Silk.
- 568—SCROLL  
Chinese Village, with Overhanging Rocks.  
An Unusually Fine Old Painting.
- 569—SCROLL  
Chinese Village Scene.

- 570—SCROLLS  
Studies of the Bamboo. Two Pieces.
- 571—KAIKAMONO  
Painting on Silk of Haikon Lake, Japan.
- 572—TWO OLD CHINESE RUBBINGS FROM CHINESE MONUMENTS  
(B) Old Map of Peking.  
Purchased in Peking in 1877.
- 573—SCROLL  
Chinese Scene Done on Brown Silk.
- 574—KAIKAMONO  
An Old Painting of Storks Done on Silk which was purchased by Dr. Thomas Antsill in Tokio in 1872. Dr. Antsill was an Expert Chemist, advising the Japanese Government in the Establishment of their Mint.
- 575 STENCILLED KAIKAMONO  
Wisteria and Birds.
- 576—LARGE KAIKAMONO  
Mounted in Fine Old Brocade. The Design is a Waterfall, with Trees on an Overhanging Bank.
- 577—OLD KAIKAMONO  
An Old Japanese Temple, Painted in Fine Detail.
- 578—OLD KAIKAMONO  
Study of a Dragon, in Black. Painted on Silk.
- 579—CHINESE PAINTING  
On Dull Toned Silk.
- 580—CHINESE SCROLL  
The Leading Gods in a Chinese Pantheon.
- 581—KAIKAMONO  
Death of Buddha. A Japanese Painting. Collection of Mr. Frederick May.
- 582—KAIKAMONO  
Study of Peonies.
- 583—KAIKAMONO  
Rare Old Temple Painting of Kwangyin from an Old Temple in Kyoto. Over two hundred years old.



No. 603





- 584—KAIKAMONO  
Companion to the above.
- 585—KAIKAMONO  
Old Painting of Kwangyin. Done in Black and White.
- 586—KAIKAMONO  
An Old Temple Painting of the God Daruma, with His Attendants.
- 587—SCROLL  
Japanese Embroidered Tiger, Mounted on Old Blue Silk.
- 588—CHINESE WOODEN PANELS.  
Two Old Wooden Lacquered Panels taken from an Old Chinese  
Screen. Representing  
(A) Two Men in a Boat.  
(B) Two Men Walking in the Mountains.
- 589—TWO MORE
- 590—OLD CHINESE PAINTING ON GLASS  
Showing Chinese Ladies in Various Social Functions. Purchased  
in Peking. Framed in Teakwood.  
*Length 36 Inches, Width 9 Inches.*
- 591—ANOTHER
- 592—TWO MORE  
Slightly Imperfect.
- 593—OLD JAPANESE BROCADE  
Framed.  
*Length 30½Inches, Width 9½ Inches.*
- 594—DRAGON.  
Mounted on Blue Silk.  
*Size 17¾x13 Inches.*
- 595—PAIR CHINESE SLEEVE BANDS  
Unusually Fine Old Bands which have been Framed for Pictures.
- 596—CHINESE SLEEVE BAND  
In a large Frame.
- 597—LONG KAIKAMONO  
Embroidered Flowers, done on White Silk.

## RARE OLD THIBETAN PAINTINGS.

*The following paintings were purchased in Peking in 1917. They are estimated on good authority as being from 300 to 500 years old, and have been worshipped for centuries in some old Thibetan temple.*

*It is possible that they came from the famous Monastery of Cheng Da, which covered some seventy acres of ground and was situated in South-eastern Thibet. This was totally destroyed by Chinese bandits in 1915.*

598—BUDDHA

Surrounded by Eight Bodhvestvas. Mounted with the Original Brocade.

599—PAINTING WITH THE ORIGINAL BROCADE

The Central Figure is possibly Sambhava, the first living Buddha. Surrounded by Six Smaller Figures.

600—TAMDRIN.

The God who Protects Men from Evil Spirits.

601—PAINTING

Cow Headed Demon Surrounded by Flames.

602—PAINTING

Drolma, the Saviouress, with Twenty Smaller Figures.

603—PAINTING

The largest and finest Old Painting in the Collection. A Central Figure is probably Sambhava, the first living Buddha, and the large number of Side Paintings probably illustrate various scenes in his life history.

*See Illustration.*

*Size 86x44 Inches.*

604—TAMDRIN

Surrounded by Eleven Other Gods.

605—PAINTING

Beautiful Central Figure of Dharma Kaya (Moha Matré) the Great Madher, Surrounded by Fifty-eight Bodhvastvas. Mounted on the Original Old Block and Gold Brocade.

*See Illustration.*

*Size 42x28½ Inches.*

606—PAINTING

The Wheel of Life Surrounded by Various Deities.

607—PAINTING

Buddhas Surrounded by Nineteen Bodhvestvas. The Old Brocade.

608—PAINTING

Buddha Surrounded by Twenty-one Bodhvastvas.

609—THIBETAN PAINTING

From the Yellow Temple in Peking. A Horizontal Scroll with the Famous Thibethan Mantra "Om mani padme Hum." To the Spirit which dwells in the Lotus. Purchased in Peking and said to have originally hung in the Yellow Temple.

610—THIBETAN PAINTING FROM THE YELLOW TEMPLE.

The Sacred Buddhistic Emblem Occupies the Centre. It has a large Thibetan Mantra in Blue. Border is of Gold Adorned with fine Scroll Work and with the Characters of the famous Prayer "Om Mani Padme Hum."

**BROCADES.**

611—KAIKAMONO

From Antique Brocade which once formed a "No" dancers Kimono. The tones are very soft and it is embroidered with Storks.

612—BROCADED PICTURE

A Beautiful Picture in Golds and Dull Reds of the Mikado leaving the Temple. He is surrounded by Kneeling Officials. The Work of a Master Weaver.

*Size 27x25 Inches.*

613—STRIP OF BROCADED WHITE SATIN

614—RUNNER, FROM AN OBI.

Decorations of Fans and a Backing of Silk. Made from a Brown and Gold Silk Obi.

615—RUNNER OF IMPERIAL YELLOW BROCADE

From the Imperial Looms in Peking. Designs of Conventional Clouds.

*Size 69x15½ Inches.*

616—RUNNER FROM AN OBI.

Turquoise Blue Satin, with Designs of Mountains Woven in Metallic Silver Threads.

617—RUNNER FROM AN OBI

Geese on a Brown Background.

618—RUNNER FROM A PRIEST'S ROBE

Gold Flowers on Blue Silk.

- 619—RUNNER FROM A CHINESE "KUSSU"  
 Brocade from an Old Official Robe of Gold Dragons on Blue.
- 620—RUNNER OF IMPERIAL SACRIFICIAL SILK  
 Silk Formerly Offered by the China Emperor at the Temple of Heaven.
- 621—PRIEST'S ROBE  
 In Orange, Black and Purple  
*Size 71x50 Inches.*
- 622—PRIEST'S ROBE  
 Apricot Shot with Gold.  
*Size 46x46 Inches.*
- 623—TABLE COVER  
 Made from a Priest's Stole.  
*Size 40x25 Inches.*
- 624—PRIEST'S STOLE  
 In Old Blue and Gold.
- 625—PRIEST'S STOLE  
 Light Grey and Gold.
- 626—TABLE COVER  
 Made from a Piece of Old Brocade, Emblazoned with the Crest of the Mikado (Sixteen Petal Chrysanthemum).
- 627—CHINESE CUT VELVET HANGINGS  
 In Brown with Figures of the Taoist Gods. Two Strips.  
*Size 62x25 Inches.*
- 628—PIANO COVER OF BROCADED SATIN  
*Size 72x24½ Inches.*
- 629—TABLE COVER  
 Of Brocaded Satin.  
*Size 40x30 Inches.*
- 630—ALTER CLOTH  
 Of Old Chinese "Kussu" Brocade.  
*Size 40x38 Inches.*
- 631—ALTAR CLOTH  
 Old Orange Brocade.
- 632—RUNNER.  
 Old Blue Dragon Brocade, from an Official Coat.  
*Size 62x15 Inches.*





- 633—LADIES' HAND BAGS  
(A) Imperial Sacrificial Silk.  
(B) Brown Silk Brocade.
- 634—BAGS MADE FROM EMBROIDERY  
Three Pieces.
- 635—THREE BAGS
- 636—TWO BAGS
- 637—THREE BAGS
- 638—DESK SET  
Made from Embroidery.
- 639—BOOK RACKS  
Two Sets.
- 640—PICTURE FRAMES FROM EMBROIDERY.  
Two Pieces.
- 641—TWO HAND BAGS
- 642—TWO PORTFOLIOS.  
Made from Mandarin Official Badges.

### MANDARIN COATS.

- 643—CHINESE COATS.  
Dark Claret Silk with Embroidered Butterflies.
- 644—MANDARIN COAT  
Brocade with Gold Dragons and Lined with Green Silk.
- 645—COAT  
Blue Figured Grass Linen, with Embroidered Collar and Trims.
- 646—LONG COAT  
Blue Silk, with Embroidery.
- 647—GREEN SILK COAT  
Wadded.
- 648—JAPANESE WEDDING KIMONO.  
A Beautiful Old Garment, Embroidered on Brocade Silk, with  
Orange and Gold Flowers.
- 649—MANDARIN COAT  
Official's Coat of Dragon Brocade.



650—BROCADED COAT  
Rose Butterflies on Light Green.

651—MANDARIN COAT  
Old "Kussu" in Dull Blue Dragons.

652—OLD KIMONO  
Embroidered in Cherry Blossoms.

### CHINESE PEWTER WARE.

653—PEWTER MUGS  
Made by Kut Hing, Swatow. Two Pieces.

654—SET.  
Tea Pot, with Six Cups and Saucers, by Kut Hing.

655—SONG GIRLS  
Make-up Box and a Small Box in Form of a Peach.

656—ENGRAVED BOWL  
Fish Darting in the Water, by Kut Hing.

657—TEA POT  
Jade Handle.

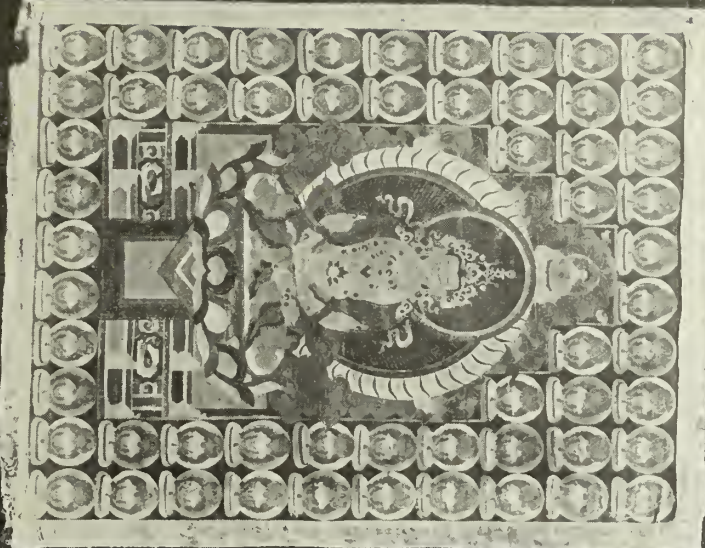
### PAINTINGS.

658—NINE PAINTINGS OF BUDDHISTIC HELL  
Wuchang has the largest Temple in China devoted to showing the punishments of the damned in Buddhistic Hell. Mr. Osgood was unable to obtain good photographs, but through the kindness of missionaries of the American Episcopal Church obtained this set of paintings from the native artist. The last picture of the series shows souls being reborn into the world. The old lady pours out the tea of oblivion. In front of the judge are souls who are to be re-incarnated in the shape of animals, while in the corner is the horse-driven mill which is sending forth a cloud of spirits, some to be born in wealthy homes, some as animals, and some as reptiles.

659—KOKERSAI PRINT  
A Black and White Print of the Osaka Series. From the May Collection.

660—THE DEATH OF BUDDHA  
This extraordinary painting was purchased in 1890 from Hari Shin, a Curio dealer of Kyoto, who obtained it from a Buddhist Priest. It was understood it came from an old Temple near Kyoto.  
*See Illustration.*

No. 605





- 661—PAINTING OF THE EMPEROR KANG HSI,  
A Most Interesting Painting of this Celebrated Emperor (1661-  
1722) and His Family.  
*See Illustration.*

### **JEWELRY.**

- 662—NECKLACE OF PORCELAIN BEADS  
Yellow Porcelain Incised with the Emblem for Long Life. The  
Pendant is of Green Porcelain with the Emblem of long life combin-  
ed with Bats for Happiness. Contained in a Box of Chinese Em-  
broidery.
- 663—NECKLACE OF BAROQUE PEARLS.  
Set in a Gold Chain, with a Large Baroque Pearl Pendant Set  
in Platinum and Diamonds.
- 664—CORAL NECKLACE.  
With Odd Pendants Set with Kingfisher Featherwork. Two  
Pieces.
- 665—NECKLACE  
From a Shinto Priest's Rosary.
- 666—NECKLACE  
Of Graduated Lapis-Lazuli Beads. From Shanghai.
- 667—CHINESE PENDANTS.  
Four Odd Pottery Pendants taken from an Old Temple Lantern.

### **IDOLS IN LACQUER SHRINES.**

- 668—BUDDHA  
Sealed on a Lotus.
- 669—BUDDHA
- 670—BUDDHA
- 671—FUDO MYOO  
With Two Attendants.
- 672—IDOL
- 673—IDOL
- 674—STONEWARE COW  
With a Boy Perched on Top (one horn clipped). The Ox is the  
Emblem of Ten Jin, the God of Calligraphy and is Kept by Stu-  
dents on their Deity Shelf.

- 674A—CHINESE LADY'S CABINET  
Old Teakwood and Brass.
- 675—OLD HELMETS  
(A) Two Lacquer Helmets, one with Design of a Dragon and one with a Dragonfly.  
(B) Sleevelets of Coat of Mail.
- 676—OLD CHINESE LEATHER PILLOWTOP JEWEL CASE
- 677—JAPANESE STENCILS  
Two Panels.
- 678—JAPANESE STENCILS  
Two Panels.
- 679—CHINESE ABACUS  
Or Reckoning Boards. Two Pieces.
- 680—PICTURE FRAME  
Made of Raised Silk Flowers.  
(B) Two Photo Albums.
- 681—THREE SWAGGER CANES  
With Silver Handles.
- 682—CHINESE MUSICAL INSTRUMENT
- 683—CHINESE AMOY LANTERNS  
Two Pieces.
- 684—CHINESE AMOY LANTERNS  
Three Pieces.
- 685—CAVES  
Three Pieces.
- 686—LEATHER COAT  
With Imperial Crest. Worn by a Servant of the Mikado.
- 687—FANS  
One with Red Sticks, Used by a Shinto Priest, a "No" Dancers Fan, and Three Others.
- 688—FANS  
Assortment of Four Pieces.
- 689—PHILIPPINE CURIOS  
Carrier, Rain Coat and Broom.

690—CHINESE BRIDE'S HAT

691—TWO PILLOWS

Made of Brocade taken from an Antique Persian Wedding Gown.

### EMBROIDERY

692—HINDOO HANGINGS

Stenciled in Gold and Silver on Blue Cloth. Two Panels.

693—CHINESE DANCER'S SKIRT

Embroidered.

694—CHINESE SOLDIER'S UNIFORM.

695—CHINESE RED SILK SKIRT

696—TURKISH EMBROIDERY

Metallic Threads.

697—TABLE COVER

Gold Dragons on Black Silk.

698—WALL PIECE

699—HANGING OF RED SATIN

700—TABLE COVER

Birds and Flowers on Cream Ground. Fine Fringe.

701—RED SATIN RUNNER.

Chinese Characters Worked in Gold.

702—RED SILK RUNNER.

Boys in Procession.

*Size 79 by 19 Inches.*

703—PILLOW

Embroidered Dragons on Red Silk.

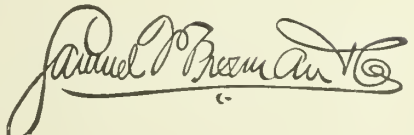
704—TABLE COVER

Birds and Flowers on Claret Colored Silk.

705—PERSIAN KORAN COVER.

706—HINDOO TABLE COVER

From Ludhana, Embroidered with Yellow Silk Floss.



MEMORANDUM.



MEMORANDUM.

MEMORANDUM.



Duke University Libraries



D00235853Q

ESTABLISHED NOV. 12, 1805

**SAMUEL T. FREEMAN & CO.**  
AUCTIONEERS  
1519-21 CHESTNUT STREET  
PHILADELPHIA, PA.

**DUKE UNIVERSITY**  
**LIBRARY**  
East Campus Library



**DURHAM, NORTH CAROLINA**  
27706

B SONS  
TREET  
IA



D00235853Q



DUKE LSC