

## Historic, archived document

Do not assume content reflects current scientific knowledge, policies, or practices.



62.61

1915

FEB 15 1916

# VICK'S WHOLESALE CATALOGUE



FALL  
BULBS  
PLANTS  
AND SEEDS

JAMES VICK'S SONS  
ROCHESTER, N.Y.

VICK'S SUPERFINE MIXED TULIPS

# Wholesale Bulb, Seed and Plant Catalogue

Autumn of Nineteen Hundred Fifteen

---

## These Prices are for Florists and Dealers Only

---

**A** VERY favorable combination of **Low Prices and High Quality** face the buyers of our Fall Bulbs this year. It is most important that one uses great care in securing stocks this year, because, as a result of the demoralized conditions abroad, immense quantities of bulbs, which have changed hands frequently, will be shipped to America, so that there can be no assurance of good quality. All of our stock is coming from growers from whom we have secured our bulbs for many years, because of the uniform high quality. They report to us that their stock is fully up to the high standard which our trade demands, and is all of their own growing, so that they have not been obliged to purchase of farmers or use stock which has been thrown upon the market. In our judgment, this fact is the most important announcement we can make.

**Our Prices** are unusually low this year. In many varieties the reduction amounts to 25 per cent. to 35 per cent. below the prices of last year, a big saving for American buyers.

**The Fact** that we are getting our stock from sources which we have found for years to be perfectly reliable, and the other fact that our prices are much lower than usual, ought to bring us not only the orders of our regular trade but of many other careful florists who consider prices very important, but quality more important than price.

**Our Terms** are liberal. To parties of approved credit we allow 60 days time, or 2 per cent. discount if paid in 10 days from date of invoice, or 3 per cent. if cash is sent with order. Orders from new or unknown customers should be accompanied by cash; or, if credit is desired, satisfactory reference. No goods will be sent C. O. D. unless a partial remittance is made as a guarantee that goods will be accepted. *These prices are subject to change without notice.*

**Our Facilities** are unsurpassed. With splendid freight and express accommodations we can handle orders rapidly. Nine railroads enter Rochester, whose numerous fast freight and express trains enable customers to secure their shipments promptly.

**At prices here quoted** we deliver all goods to the freight or express companies in Rochester, with no charges for boxes, packing or carting. With our excellent equipment for shipping we can be depended upon to send out bulbs in good condition; after that our responsibility ceases.

**Special Notice.** Customers should give on every order, full name, postoffice, freight or express station, county and State; and also advise whether goods are wanted by express or freight. In the absence of such instructions we will ship according to our best judgment, but will not be responsible for the consequences. **WE USUALLY SHIP BY EXPRESS**, believing that course to be safer and more satisfactory. But sometimes, in the absence of instructions, we ship by freight, especially in cases of heavy shipments, to points easily reached. We have no fixed rule, however, and advise that customers give their preference.

**A Final Request.** Customers should advise whether they desire the varieties shipped when ready, or the entire order held until it can be shipped together. If not advised, we will ship when each kind of bulb is ready. The early Bulbs—Roman Hyacinths, Paper White Narcissus, Freesias, Candidum, Harrisii and Calla Lilies—can be furnished at once; nearly all of these have already arrived. Hyacinths, Tulips, Crocus, etc., in September; Lilies of our own growing can be furnished in October while most imported hardy lilies, Lily of the Valley etc. do not, as a rule arrive until late in October or November.



### **Lilium Harrisii (True Bermuda Easter Lily)**

Invaluable for florists. Can be forced into bloom by Christmas. Our stock comes direct from one of the best growers in Bermuda, to whom we pay special prices to secure extra good bulbs. well grown, thoroughly ripened, carefully packed. We believe this stock will give perfect satisfaction.

7-9 inches, per dozen, \$1.35; per 100, \$8.75; Original case of 200, \$17.00

# BULBS FOR FORCING

Not less than six Bulbs of a kind at the dozen price, 25 at the 100, or 250 at the 1000

## Early Roman Hyacinths

One of the most popular varieties for florists and gardeners. Can be brought into bloom in November if planted in August, and a succession of blooms can be had the entire winter. Pure White, 12 to 15 centimetres. Per dozen, 50 cents; per 100, \$3.00; per 1000, \$28.00. Vick's Special White per dozen 60 cents; per 100, \$3.25; per 1000, \$30.00. Blue, per dozen, 35 cents; per 100, \$2.25. Pink, per dozen, 40 cents; per 100, \$2.50.

## Narcissus, Paper White Grandiflorus

Superior in every way to the ordinary Paper White. Very popular for forcing. Can be brought into flower in about 30 to 40 days. Will do well in ordinary house temperature and with no special care. For growing in shallow dishes in pebbles and water they are superior to the Chinese Lilies. Flowers are larger, more attractive in color and possess a more pleasing fragrance. Pure White, 13 centimetres or over, per dozen, 25 cents; per 100, \$1.00; per 1000, \$8.50.

## Double Roman Narcissus

One of the best varieties for forcing. Flowers white, with yellow centers. Deliciously fragrant. Per dozen 20 cents; per 100, \$1.10; per 1000, \$9.50.

## Freesia Refracta Alba

A very valuable and desirable bulbous plant for forcing, rapidly gaining in favor. Each spike bears from five to eight flowers which last a long time after being cut. The flowers are pure white, with a touch of yellow at the inner base, and delightfully fragrant. Extra large size bulbs, ( $\frac{3}{4}$  inch and up). Per dozen, 25 cents; per 100, \$1.25; per 1000, \$10.00. First size bulbs ( $\frac{1}{2}$  to  $\frac{5}{8}$  inch). Per dozen, 20 cents; per 100, 90 cents; per 1000, \$7.50.

## Freesia Purity

A very superior strain. First size; per dozen, 35 cents; per 100, \$1.25. Per 1000, \$10.00. Extra choice; per dozen, 40 cents; per 100, \$1.50; per 1000, \$12.50.

## Freesia Excelsior

A splendid new variety. The originators claim that as soon as a stock can be worked up it will supplant all others. Two or three times as large as ordinary kinds and pure white. Per dozen, 60 cents.

## Lilium Longiflorum or Japanese Easter Lily

This magnificent lily is a great favorite both for forcing and outdoor planting. It resembles *L. Harrisii* in color and shape, and while it cannot be brought into flower as early as *Harrisii*, it is a great favorite to follow *Harrisii*. Flowers are pure white, trumpet shape and exquisitely fragrant. We offer only the best imported stock. Price, 7 to 9 inches, extra selected, per dozen, \$0.90; per 100, \$5.25; per 1000, \$50.00. First quality, per dozen, 75 cents; per 100, \$4.75; per 1000, \$45.00.

## Lilium Longiflorum Formosum

Strong healthy bulbs, peculiarly unsusceptible to disease. Forces readily. Free bloomer. Especially recommended for florists. A growing favorite. 7 to 9 inches, per dozen, \$1.10; per 100, \$6.25; per 1000, \$60.00.

## Lilium Longiflorum Multiflorum

7 to 9 inches; per dozen, \$1 00; per 100, \$6.00; per 1000, \$55 00.

## Lilium Giganteum

Extra fine. Very popular. 7 to 9 inches; per dozen, 85 cents; per 100, \$5.50.

## Lilium Candidum

This variety is sometimes called the Annunciation Lily, or Madonna Lily. Good for forcing, also used for outdoor planting. Its snowy white flowers are borne aloft by long, slender stems. Unsurpassed in stateliness and beauty. Choice selected bulbs, per dozen, 60 cents; per hundred, \$4.50; per thousand, \$40.00.



**Vick's Extra Selected Lilies of the Valley  
Are the most Profitable Kind for Florists**

Best imported. Will force quickly and flower abundantly. Pips ready in Nov. or Dec.  
Vick's extra selected Berlin, per dozen, 25 cents; per hundred, \$1.60; per thousand, \$15.00  
Vick's extra selected Hamburg, per dozen, 25 cents; per hundred, \$1.50; per thousand, \$13.00  
Do not be persuaded to buy a cheap grade of lilies by a few cents difference in price.

# HYACINTHS

First Size Bulbs, Especially Selected for Our Trade

*An Unusual Opportunity to Buy Superfine Quality at Low Prices*

**T**HE growers from whom we import our Hyacinths are famous as specialists all over the world. Because their markets to countries at war are closed, it affords us an opportunity to offer Hyacinths from well-known and reliable sources — a stock that we are acquainted with and can highly recommend,—at prices lower than ever before. In fact, we offer our customers the same high-grade stock we are accustomed to furnish at prices lower than other houses quoted for advance import orders. We import more bulbs into Rochester than all the other Seedsmen, Nurserymen and Florists combined. Orders already booked are far ahead of previous years, plainly indicating a record breaking season, all because we endeavor to furnish "The best the earth produces." The quality will be remembered when the price has been forgotten.

Not less than 6 of one variety at dozen rate, 25 at hundred rate.

Where less than 6 are ordered, 8 cents each

## SINGLE RED AND ROSE.

	Per Doz.	Per. 100
Amy, carmine . . . . .	\$0 75	\$5 25
Baron van Tuyll, fine pink . .	70	5 00
Charles Dickens, delicate pink .	70	5 00
Garibaldi, brilliant carmine . .	75	5 25
General Pelissier, brilliant carmine, very early . . . . .	75	5 25
Gertrude, rosy pink . . . . .	65	4 75
Gigantea, blush pink . . . . .	70	5 00
Lady Derby, waxy pink, very large . . . . .	70	5 00
Lord Macaulay, rosy carmine .	75	5 25
Moreno, fine pink . . . . .	70	5 00
Norma, blush pink . . . . .	70	5 00
Robert Steiger, deep red . . .	70	5 00
Roi des Belges, bright red, . .	70	5 00
Rose à Merveille, rose, extra fine	75	5 25

## SINGLE WHITE.

Alba Superbissima, pure white .	75	5 25
Albertina, extra fine, pure white	70	5 00
Baroness van Tuyll, pure white	70	5 00
Grand Blanche, blush white, large bells and spike . .	75	5 25
Grandeur à Merveille, blush white	75	5 25
La Franchise, waxy white . .	75	5 25
La Grandesse, pure white . . .	70	5 00
L'Innocence, pure white . . .	70	5 00
Madame Van der Hoop, pure white . . . . .	75	5 50





**SINGLE WHITE.**

	Per Doz.	Per 100
Queen Victoria, pure white . . . . .	75	5 25
Voltaire, creamy white . . . . .	75	5 25

**SINGLE BLUE.**

Baron van Tuyll, dark blue . . . . .	75	5 25
Charles Dickens, light blue . . . . .	70	5 00
Czar Peter, light porcelain blue, large spike . . . . .	70	5 00
Enchantress, beautiful porcelain	70	5 00
Grand Lilas, porcelain-lilac . . . . .	75	5 25
Grand Maitre, dark porcelain blue . . . . .	70	5 00
King of the Blues, deep blue . . . . .	70	5 00
La Peyrouse, light porcelain . . . . .	75	5 25
Queen of the Blues, light blue . . . . .	75	5 25
Schotel, light porcelain, extra fine . . . . .	75	5 25

**SINGLE YELLOW.**

City of Haarlem, very large, best pure yellow . . . . .	75	5 25
Ida, golden yellow, early . . . . .	75	5 25
King of the Yellows, deep yellow	75	5 25
Obelisque, pure yellow . . . . .	75	5 25
Tamerlan, orange-yellow . . . . .	76	5 25

**SINGLE PURPLE.**

Haydn, distinct mauve . . . . .	75	5 25
Sir William Mansfield, purple mauve, large truss . . . . .	75	5 25

**DOUBLE RED AND ROSE.**

	Per Doz.	Per 100
Bouquet Royal, salmon pink . \$0	75	\$5 25
Bouquet Tendre, carmine rose .	75	5 25
Chestnut Blossom, new blush pink . . . . .	75	5 25
Goethe, light rose . . . . .	75	5 25
Grootvorst, blush pink . . . . .	75	5 25
Le Grand Concurrent, pale rose	75	5 25
Lord Wellington, delicate pink	70	5 00
Noble Per Merite, deep rose .	75	5 25
Prince of Orange, dark rose .	75	5 25

**DOUBLE WHITE.**

Bouquet Royal, pure white . . . . .	75	5 25
Grootvorstin, creamy white . . . . .	75	5 25
Isabelle, rosy white . . . . .	75	5 25
La Tour d' Auvergne, pure white	75	5 25
La Virginite, blush white . . . . .	75	5 25
Non plus ultra, pure white . . . . .	75	5 25
Prince of Waterloo, pure white	75	5 25

**DOUBLE BLUE.**

Bloksberg, light porcelain blue	75	5 25
Charles Dickens, lilac blue . . . . .	75	5 25
Crown Prince of Sweden, violet blue . . . . .	75	5 25
Garrick, bright blue . . . . .	75	5 25
General Antinck, Porcelain, dark center . . . . .	75	5 25
General Kohler, bright blue, large	75	5 25

**DOUBLE YELLOW.**

Jaune Supreme, bright yellow .	75	5 25
Sir Rowland Hill, pure yellow	75	5 25

**UNNAMED HYACINTHS.**

Our unnamed Hyacinths are made up of mixtures of named varieties and are used by many successful Florists for forcing, in place of the more expensive named kinds. For outdoor growing, this stock will give abundant satisfaction. The saving in price here is greater than on any other class.

Not less than 6 bulbs at the dozen rate, 25 at 100 rate, 250 at 1000 rate.

Single Mixed Rose	Doz	100	1000
and Red . . . . .	.30	2 00	19 00
" " Dark Red . . . . .	.30	2 00	19 00
" " Rose and Pink . . . . .	.30	2 00	19 00
" " White, all shades . . . . .	.30	2 00	19 00
" " Pure White	.30	2 00	19 00
" " Rosy and Cream White	.30	2 00	19 00
" " Blue, all shades . . . . .	.30	2 00	19 00
" " Dark Blue . . . . .	.30	2 00	19 00
" " Light Blue . . . . .	.30	2 00	19 00
" " Yellow . . . . .	.30	2 00	19 00
" " all colors . . . . .	.30	2 90	19 00

Double Mixed Rose	Doz	100	1000
and Red . . . . .	.30	2 10	20 00
" " Dark Red . . . . .	.30	2 10	20 00
" " Rose and Pink . . . . .	.30	2 10	20 00
" " White, all shades . . . . .	.30	2 10	20 00
" " Pure White	.30	2 10	20 00
" " Rosy and Cream White	.30	2 10	20 00
" " Blue, all shades . . . . .	.30	2 10	20 00
" " Dark Blue . . . . .	.30	2 10	20 00
" " Light Blue . . . . .	.30	2 10	20 00
" " Yellow . . . . .	.30	2 10	20 00
" " all colors . . . . .	.30	2 10	20 00

# Vick's Superfine Single Tulips

The varieties below are considered the best and most popular by all leading Florists and Bedding Experts. Our prices are as low as many other houses have offered for advance import orders. Regular Vick Quality—the best the earth produces.

Not less than six bulbs of one variety at the dozen rate, nor less than twenty-five at the 100 rate, nor less than 250 at the 1000 rate

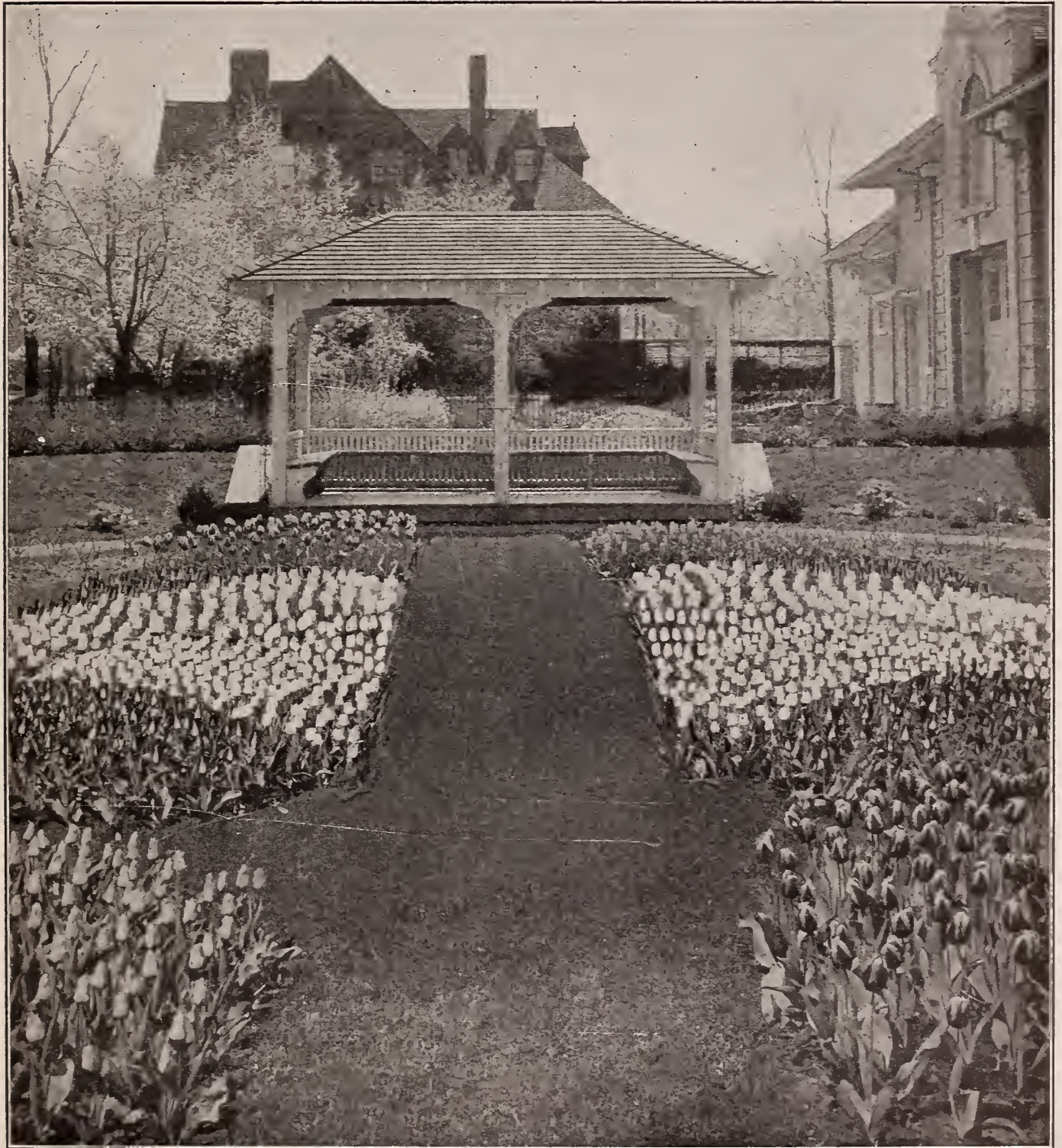
## NAMED SINGLE EARLY TULIPS

The Varieties marked (\*) are superior for forcing.

	Per doz.	Per 100	Per 1000
Artus, bright scarlet, good bedder . . . . .	\$0 20	\$0 85	\$6 75
*Belle Alliance, (Waterloo) scarlet, large flower, fragrant . . . . .	25	1 15	10 00
Brutus, crimson . . . . .	25	1 15	10 00
*Canary Bird, yellow, early . . . . .	25	1 25	11 00
*Chrysolora, golden yellow . . . . .	20	1 00	8 50
*Cottage Maid, rose and white, pointed petals forces slowly . . . . .	20	90	7 50
*Couleur Cardinal, scarlet, one of the very best, forces slowly . . . . .	25	1 50	13 50
Couleur ponceau, crimson and white . . . . .	20	90	8 00
Crimson King, fine crimson, large flower . . . . .	20	90	8 00
Duchesse de Parma, red, with ruffled yellow edge . . . . .	20	1 00	9 00
*Duc van Thol, Scarlet . . . . .	20	1 10	9 50
* " " Red and yellow . . . . .	20	1 10	9 50
" " Crimson . . . . .	20	1 00	8 50
* " " Cochineal extra fine . . . . .	25	1 25	11 00
* " " White, maximus . . . . .	20	1 10	9 50
*Dusart, fine large dark scarlet, pointed petals . . . . .	20	1 00	9 00
Fire Flame . . . . .	25	1 25	11 00
*Flamingo, light and dark rose shading, extra large, fine . . . . .	50	2 75	25 00
*Joost vanVondel, red and white . . . . .	25	1 50	13 50
*Joost vanVondel, a splendid white . . . . .	35	2 50	23 00
*Keizerskroon, (Grand Duc) red, golden edge . . . . .	25	1 40	13 00
*L'Immaculee, pure white . . . . .	20	90	8 00
*La Reine (Queen Victoria) beautiful rosy white . . . . .	15	75	6 50
*Mon Tresor, large, deep yellow . . . . .	25	1 50	13 50
Pink Beauty, carmine and white, extra fine . . . . .	50	2 50	23 00
*Pottebakker, white . . . . .	25	1 50	14 00
* " scarlet . . . . .	25	1 15	10 00
* " yellow, occasionally striped red . . . . .	25	1 25	11 00
*President Lincoln, violet . . . . .	30	1 75	16 00
*Prince of Austria, beautiful orange, fragrant . . . . .	25	1 15	10 00
Princess Marianne, rose shaded . . . . .	20	90	8 00
*Princess Helena, snow white, large flowers . . . . .	25	1 35	12 50
*Proserpine, beautiful rose crimson . . . . .	35	2 25	20 00
*Purple Crown, dark purple, excellent . . . . .	20	1 15	10 00
Queen of Scarlets, extra fine . . . . .	20	1 20	10 50
Rembrandt, bright scarlet . . . . .	30	1 75	16 00
Rosamundi (Huikman), pink and white . . . . .	20	90	8 00
*Rose Grisdelin, pink and white . . . . .	20	85	7 50
*Rose Luisante, pink . . . . .	30	1 75	16 00
Standard Royal, white and red striped . . . . .	25	1 35	12 50
*Thomas Moore, orange, a beautiful color . . . . .	20	90	7 75
*Vermillion Brilliant, bright red . . . . .	25	1 50	13 50
*White Hawk, (Albion) pure white, splendid for forcing . . . . .	25	1 65	14 00
White Swan . . . . .	20	1 15	10 00
*Yellow Prince, fine yellow, sweet scented . . . . .	20	95	8 25

**NAMED EARLY SINGLE TULIPS—Continued**

	Per Doz.	Per 100	Per 1000
Extra Superfine, mixed . . . . .	\$0 20	\$0 75	6 50
First Quality, mixed . . . . .	15	65	5 00
Unnamed in Separate Colors, white . . . . .	20	90	7 00
“ “ “ “ pink . . . . .	20	90	7 00
“ “ “ “ yellow . . . . .	20	90	7 00
“ “ “ “ red . . . . .	20	90	7 00
“ “ “ “ variegated . . . . .	20	90	7 00
“ “ “ “ rose . . . . .	20	90	7 00



SINGLE EARLY TULIPS IN A ROCHESTER GARDEN

# Vick's Superfine Double Tulips

## EARLY VARIETIES

The following list covers the best and most popular varieties of Double Tulips. While those kinds marked with an asterisk (\*) are especially recommended for forcing, all varieties can be grown to advantage in out-door bedding.

	Per doz	Per 100	Per 1000
Alba maxima . . . . .	\$0 20	\$1 00	\$8 50
*Anna Roozen, deep pink, very fine . . . . .	35	2 00	
Arabella, carmine-pink . . . . .	30	1 85	16 00
*Crown of Roses, best deep pink . . . . .	40	2 25	20 00
*Crown of Gold, finest yellow shaded orange . . . . .	30	1 75	16 00
Duc van Thol, red and yellow . . . . .	15	85	7 00
Duke of York, cherry and white, early . . . . .	25	1 10	9 00
Gloria Solis, bronze, orange and crimson; early . . . . .	25	1 25	10 50
*Imperator rubrorum, scarlet, finest of its kind . . . . .	30	1 75	15 00
La Candeur, white; early . . . . .	25	1 10	9 00
LeBlason, rose and white, early . . . . .	20	1 10	9 00
*Lord Beaconsfield, deep cherry rose . . . . .	30	1 75	16 00
*Lord Roseberry, rose; beautiful . . . . .	30	1 75	16 00
*Murillo, pink and white; early . . . . .	20	1 00	8 50
*Murillo, white (Schoonoord) best pure white; splendid for forcing . . . . .	40	2 25	20 00
Purple Crown, splendid dark velvety-crimson; early . . . . .	25	1 25	11 00
Regina Rubrorum, red striped with creamy yellow; early . . . . .	40	2 25	
*Rex Rubrorum, scarlet; early . . . . .	25	1 50	12 50
Rose Blanche, pure white, early . . . . .	25	1 10	9 00
*Rosine, rosy white . . . . .	30	1 75	16 00
*Rubra maxima, best dark red . . . . .	25	1 25	11 00
*Salvator Rosa, deep rose . . . . .	25	1 25	11 00
Titian, deep red, yellow edge . . . . .	30	1 75	15 00
*Tournesol, red and yellow . . . . .	35	2 00	17 50
* " yellow, true . . . . .	35	2 00	17 50
Fine Quality Mixed . . . . .	18	75	6 00
Superfine Double Mixture, early sorts . . . . .	20	90	7 00

## LATE VARIETIES

While there has been a rapid increase in the popularity of all kinds of bulbs during the last few years, among no other classes have there been such an increase in demand as for the Late Flowering kinds. We are devoting considerable attention to these various classes and recommend them to the careful consideration of gardeners, florists and dealers.

	Per doz	Per 100	Per 1000
Blue Flag, soft violet blue . . . . .	\$0 50	3 75	
Mariage de ma Fille, crimson and white . . . . .	40	3 00	21 00
Paeony, gold, yellow and red . . . . .	25	1 50	13 50
Paeony, red . . . . .	25	1 50	13 50
Yellow Rose, pure yellow, sweet scented, fine . . . . .	20	1 10	9 00
Double Late Superfine, mixed . . . . .	20	90	7 50

## Vick's Superfine Strain Darwin Tulips

Too much praise cannot be given to this new Late Flowering class, which excel in brilliancy of colors and perfection of flowers. They are very robust and will grow anywhere and produce splendid results. While they are especially adapted for out-door growing, they can be grown for cut flowers under glass if forced slowly. We recommend these named varieties as our selection of over fifty kinds. Prices very much lower this year.

	Per doz.	Per 100	Per 1000
Albert Kellogg (Early Dawn) violet rose . . . . .	\$0 30	\$1 60	\$15 00
Baron de la Tonnaye, carmine rose . . . . .	25	1 25	12 00
Clara Butt, salmon pink . . . . .	25	1 15	10 00
Europe (Salmon King) fiery red . . . . .	30	1 75	16 00
Glory, brilliant scarlet . . . . .	35	2 00	18 00
Glow (Claude Gillot) dark red . . . . .	35	2 00	18 00
Gretchen, soft rose . . . . .	25	1 15	10 00
LaCandeur, (White Queen) . . . . .	30	1 75	16 00
La Tulipe Noir, true black tulip . . . . .	1 25		
Loveliness, rose . . . . .	30	1 75	16 00
Madame Krelage, rose . . . . .	30	1 85	17 50
Mr. Farnecombes Sanders, splendid scarlet . . . . .	35	2 00	18 00
Painted Lady, white . . . . .	35	2 00	18 00
Pride of Haarlem . . . . .	30	1 75	16 00
The Sultan, black . . . . .	25	1 25	12 00
Extra fine Darwin, Mixture . . . . .	20	1 25	10 00

## Late or May Flowering Tulips

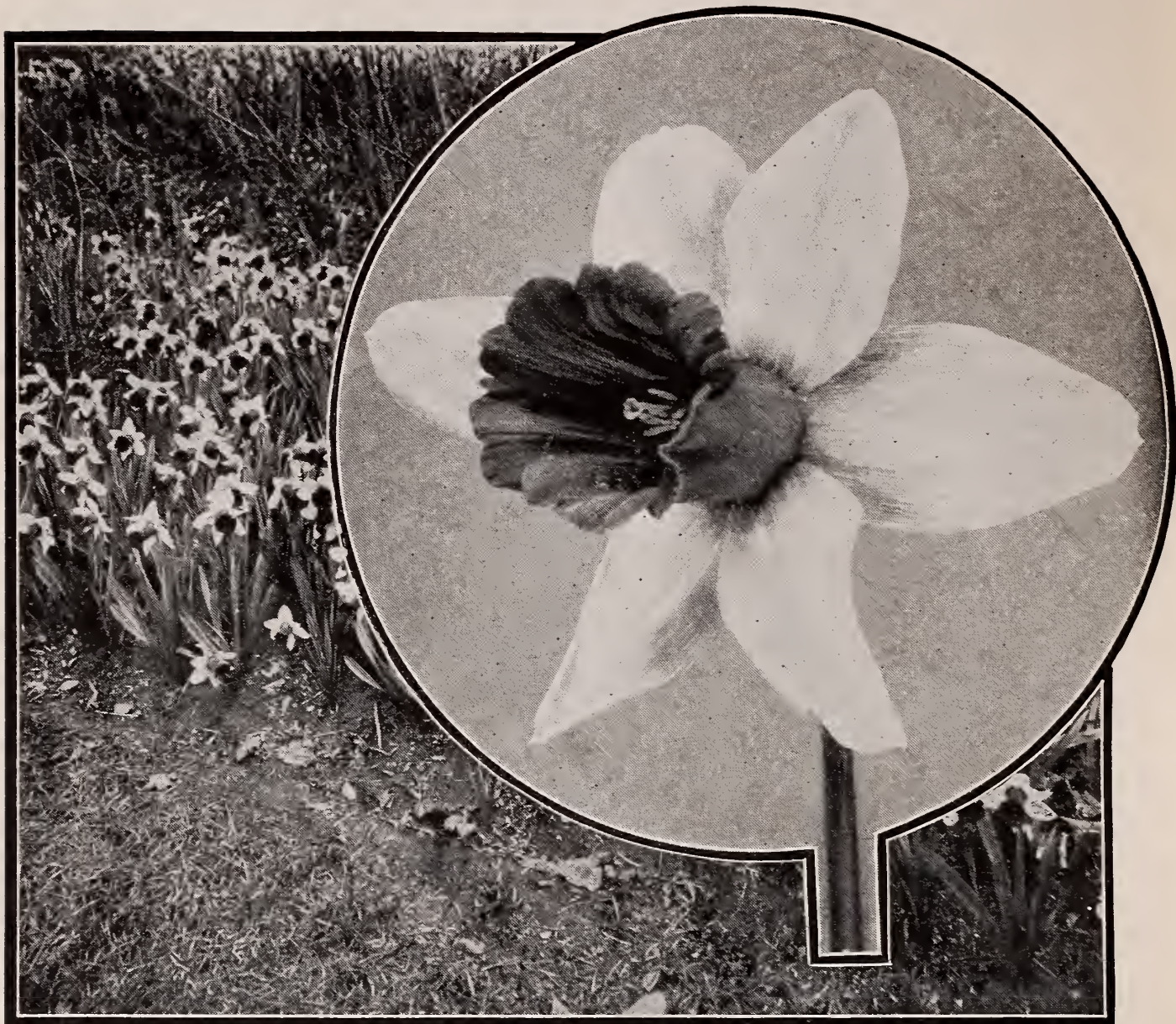
During the last few years there has been an immense sale on many of these varieties. They surpass the earlier kinds for out-door growing because of the length of their stems. Many of them have large, open flowers, while others, especially the so-called "Botanical Tulips" though unusual in shape, are exquisitely beautiful. Prices on many varieties are lowest ever known.

	Per doz.	Per 100	Per 1000
Bizarres, yellow ground, mixed varieties . . . . .	\$0 20	\$1 00	\$ 8 50
Roses, white ground, mixed varieties . . . . .	20	1 20	10 00
Violets, white ground, mixed varieties . . . . .	20	1 20	10 00
Bizarres, Roses, and Violets, mixed . . . . .	20	1 10	9 00
Breeders, fine mixed . . . . .	20	1 20	10 00
Bouton d'or (Ida, Golden Beauty) . . . . .	20	1 20	10 00
Clusiana, white and red striped . . . . .	40	2 50	23 00
Elegans, white, splendid . . . . .	35	2 10	19 00
Elegans, carmine . . . . .	25	1 65	14 00
Florentine odorato, yellow . . . . .	20	1 25	11 00
Gesneriana spathulata, brilliant scarlet . . . . .	20	1 25	10 50
Gesneriana aurantiaca, orange . . . . .	20	1 25	11 00
Gesneriana lutea, yellow . . . . .	30	1 35	11 50
Gesneriana rosea, rose . . . . .	20	1 00	9 00
Golden Crown yellow and rose . . . . .	20	1 00	8 50
Isabella (Shannon Bells, Blushing Bride) cream turning to carmine . . . . .	20	1 00	9 00
La Candeur, white . . . . .	25	1 50	12 00
Macropila, sweet-scented scarlet . . . . .	20	1 00	9 00
Picotee (Maiden's Blush) pure white, edged rose . . . . .	25	1 25	10 50
Persica, yellow and brown . . . . .	25	1 60	14 00
Primrose, beauty. . . . .	35	2 25	20 00
Retroflexa, yellow . . . . .	25	1 65	14 00
Striped Beauty, rose-flaked crimson and white extra fine . . . . .	35	2 25	20 00
Vitellina,. . . . .	50	2 75	
All colors and classes mixed . . . . .	20	1 00	9 00

## Parrot Tulips

Very popular on account of their brilliant colorings and peculiar form of flower.

	Per doz.	Per 100	Per 1000
Admiral de Constantinople, red . . . . .	\$0 20	\$1 00	\$8 50
Café Brun, rich brown . . . . .	20	1 00	8 50
Cramosi Brilliant, scarlet . . . . .	20	1 00	8 50
Gloriosa, yellow and red . . . . .	20	1 00	8 50
Lutea, yellow . . . . .	20	1 00	8 50
Markgraaf, red and yellow . . . . .	20	1 00	8 50
Perfecta, red striped . . . . .	20	1 00	8 50
Extra Superfine Mixture . . . . .	15	85	7 50



## Vick's Selected Single Narcissus

Extremely popular for forcing and out door growing. Perfectly hardy. Will grow anywhere.

	Per doz.	Per 100	Per 1000
Bicolor Empress. One of the very best, yellow and white, first size	\$0 25	\$1 50	\$14 00
“ “ Double nose bulbs. Will produce 2 or 3 blooms	30	1 85	17 00
“ Grandis maximus, white perianth, broad petals . . . . .	25	1 35	12 00
“ Horsfieldii, yellow trumpet, white perianth . . . . .	25	1 35	11 00
“ Princeps maximus, primrose perianth, yellow trumpet . . . . .	20	95	7 50
“ “ “ Double nose bulbs . . . . .	20	1 15	10 00
“ Victoria, creamy white perianth, yellow trumpet, fine . . . . .	25	1 50	14 00
“ “ double nose bulbs. Will produce 2 or 3 blooms	30	2 00	19 00
Biflorus, white, yellow cup, twin flowers . . . . .	20	90	7 50
Emperor, deep yellow, large, fine, first size . . . . .	25	1 50	14 00
“ double nose bulbs, extra fine . . . . .	30	1 75	16 00
Golden Spur, fine yellow, large flower, early, first size . . . . .	25	1 50	12 50
“ “ double nose bulbs . . . . .	35	2 00	18 50
Henry Irving, yellow, fine, early . . . . .	25	1 50	13 00
Incomparable Sir Watkin, rich golden yellow, dark cup, first size	25	1 50	13 00
“ “ “ double nose bulbs . . . . .	30	1 75	16 00
Ledsii, Mrs. Langtry, white, very beautiful . . . . .	20	1 10	9 00
Poeticus, “Pheasant's Eye,” pure white perianth, yellow cup, edged with crimson. Not for forcing . . . . .	15	65	5 50
Poeticus Burbidgei. Early; white, cup edged orange . . . . .	15	65	5 50

**VICK'S SELECTED SINGLE NARCISSUS—Continued**

	Per doz	Per 100	Per 1000
Poeticus Ornatus, pure white, sweet-scented, good forcer . . . . .	\$0 15	\$0 75	\$ 6 00
Spurius coronatus, pure yellow . . . . .	20	1 25	11 00
Trumpet Major, golden yellow, standard single Daffodil . . . . .	20	1 15	10 00
Large Trumpet varieties mixed . . . . .	20	1 10	9 00
Medium " " " . . . . .	20	85	7 50

**POLYANTHUS NARCISSUS**

The flowers are produced in clusters or trusses. Not hardy in this climate, but for flowering in pots in the house they are unsurpassed.

	Per doz	Per 100	Per 1000
Double Roman, white with yellow center . . . . .	\$0 20	\$1 10	\$ 9 50
Gloriosa, white, orange cup . . . . .	25	1 85	16 00
Grand Monarque, white and yellow . . . . .	25	1 85	16 00
Grand Soliel d'Or, bright yellow . . . . .	25	1 85	16 00
Her Majesty, beautiful white . . . . .	25	1 85	16 00
Newton, fine yellow . . . . .	25	1 85	16 00
Paper White, grandiflorus (see description, page 5) . . . . .	25	1 00	8 50
All colors mixed . . . . .	20	1 25	11 00

**DOUBLE NARCISSUS**

	Per doz	Per 100	Per 1000
Albo pleno odorato, white, fragrant . . . . .	\$0 15	\$0 80	\$7 00
Incomparable, light yellow . . . . .	20	1 15	10 00
Orange Phoenix, white and orange . . . . .	25	1 25	11 00
Silver Phoenix or Sulphur Crown . . . . .	25	1 25	11 00
VonSion, well known as "Double Yellow Daffodil," first size . . . . .	20	1 35	12 00
VonSion, extra selected . . . . .	25	1 75	15 00
VonSion, double Nose, extra large bulbs producing 2 to 3 flowers . . . . .	30	2 25	20 00
Extra fine mixed . . . . .	20	1 15	10 00

**Jonquils**

Valued for their lovely golden and deliciously sweet-scented flowers. They are perfectly hardy and flower very early in the spring. Excellent for house blooming.

	Per doz	Per 100	Per 1000
Largest Double, sweet-scented, golden yellow . . . . .	\$0 25	\$1 50	\$13 00
Single, sweet-scented, golden yellow . . . . .	15	60	4 75
Tenuior, Silver Jonquil . . . . .	35	1 85	16 00
Campernel, (Great Jonquil), yellow, fragrant . . . . .	15	65	5 00
Odorous rugulosus (Improved Campernel) . . . . .	15	75	6 50

**Chinese SACRED Lily**

**JOSS FLOWER.**

Special Chinese grown Bulbs.

A variety of the Polyanthus Narcissus, growing best in a wet soil. Excellent for retail trade; in growing demand through the season. When grown in pebbles and water it presents a beautiful appearance.

Per dozen . . . . .	\$0 60
Original basket containing 30 bulbs . . . . .	1 25
Four baskets in a hamper . . . . .	4 25

**Oxalis**

An interesting class of small bulbs, desirable for winter flowering in pots and hanging baskets, producing an abundance of bloom.

	Per Doz	Per 100	Per 1000
Bermuda Buttercup, mammoth size . . . . .	\$0 20	\$1 10	\$10 00
Bowii, bright rose . . . . .	20	1 00	8 50
Grand Duchess, pink . . . . .	20	1 00	8 50
" " lavender . . . . .	20	1 00	8 50
" " white . . . . .	20	1 00	8 50
Versicolor, variegated . . . . .	15	65	5 50
Finest mixed . . . . .	10	50	4 00



EARLY-FLOWERING CROCUS

**Vick's Named and Mixed Crocus**

There is a rapidly growing demand for Crocus both for forcing and outdoor growing. Our stock has been so uniformly satisfactory that our trade has increased enormously in the last few years.

Not less than 100 sold at these prices.

	Per 100	Per 1000
Blue and Purple . . . . .	\$0 50	\$3 85
White . . . . .	50	3 85
Striped and Variegated . . .	50	3 85
All colors mixed . . . . .	45	3 75
Large Yellow, mammoth size		
Per doz. 20 cts.	95	7 50
"    "    First size . . .		
Per doz. 15 cts.	75	6 00
"    "    Second size . .		
Per doz. 15 cts.	50	4 00
Cloth of Gold " 15 cts.	60	4 50
Cloth of Silver " 15 cts.	60	5 00

**Extra Large Named Bulbs**

The choicest of all the named varieties.

- Albion, striped.
  - Baron Von Brunow, dark blue.
  - Grand Concurrent, white.
  - King of the Blues, purple.
  - King William, dark.
  - Lord Palmerston, blue.
  - Mammoth, white.
  - Margot, light blue.
  - Mont Blanc, pure white.
  - Non Plus Ultra, variegated.
  - President Grant, striped.
  - Purpurea grandiflora.
  - Queen Victoria, white.
  - Sir Walter Scott, striped.
- Per dozen, 15 cents; per 100, 75 cents;  
per 1000, \$6.00.



Not less than 6 bulbs at dozen prices, 25 at 100, 250 at 1000

### Allium Neapolitanum

An excellent variety for winter flowering, pure white, with green stamens; extensively used by florists for forcing for cut flowers Per dozen, 10 cents; per 100, 65 cents; per 1000, \$5.00.

### Anemone

The Anemone in bloom is a most beautiful flower. Both double and single are desirable.

	Per doz.	Per 100	Per 1000
Single, best mixed colors . . . . .	\$0 15	\$0 60	\$5 00
Single pure white, The Bride . . . . .	15	60	5 00
Single Scarlet . . . . .	15	80	7 00
Double, best mixed colors . . . . .	25	1 00	9 00

### Chionodoxa (Glory of the Snow)

This family increases in popularity as it becomes better known. For pot culture in the house or for early spring outdoor use they are very gratifying.

	Per doz	Per 100	Per 1000
Luciliae, blue and white . . . . .	\$0 15	\$0 75	\$ 6 50
Sardensis, deep blue . . . . .	15	75	6 50

### Fritillaria (Guinea Hen Flower)

Very early flowering bulbs suitable for either garden or pot culture, bearing large drooping bell-shaped flowers of various colors, checkered and variegated. Per doz. Per 100 Per 1000

Meleagris, mixed . . . . .	\$0 15	\$0 85	\$ 6 00
----------------------------	--------	--------	---------

### Grape Hyacinths

Blue Grape Hyacinth, small grape-like flowers . . . . .	\$0 15	\$0 60	4 50
White Grape Hyacinth, like the above in form, but clear white . . . . .	15	75	6 50
Feathered Hyacinth, a pretty feathery flower, curious and interesting . . . . .	15	85	7 00

### Leucojum

Like monster Snowdrops. These are among the earliest of our spring flowers, and can also be forced in pots for winter bloom.

	Per doz.	Per 100	Per 1000
Vernum (Spring Snow-flake) . . . . .	\$0 20	\$1 10	\$9 50

### Puschkinia

One of the earliest of the spring flowering plants, opening its handsome flowers with Snow-drop and Crocus. The flower spikes resembles those of the Hyacinth. For planting in masses the Puschkinia is unexcelled by any other bulb, the large white flowers with blue stripe being particularly effective. It will thrive in any garden border, and is also desirable for potting for house blooming.

	Per doz.	Per 100	Per 1000
Libanotica . . . . .	\$0 15	\$0 75	\$ 7 00

### Snowdrop

(GALANTHUS NIVALIS.)

	Per doz	Per 100	Per 1000
Single . . . . .	\$0 15	\$0 65	\$ 5 50
Double . . . . .	20	1 00	9 00
Elwesii, (Giant Snowdrop) finest of all for cutting . . . . .	15	65	5 50

### Triteleia

Star-shaped flowers, an inch in diameter, pure white, beautifully lined with celestial blue. Fine for potting. They are also quite hardy and can be planted in open ground, making fine bloom for early spring.

	Per doz	Per 100	Per 1000
Triteleia uniflora . . . . .	\$0 15	\$0 50	\$4 50

### Crown Imperial (*Fritillaria Imperialis*)

This is one of those hardy and useful plants about which there is no mystery or difficulty. Once put in the ground, and having obtained a fair start, it will continue to grow and increase from year to year.

	Each	Per doz	Per 100
Mixed varieties . . . . .	\$0 10	\$1 00	\$7 50

### Colchicum (Autumn Crocus)

Autumnale, white . . . . .	\$0 60	\$4 00	
Autumnale, lilac . . . . .	55	3 75	



### Scillas

The Scilla is one of the brightest prettiest and hardest of the early spring flowers. When the Croci are in bloom the little modest Scilla Sibirica may be seen throwing up a little cluster of flowers of the most intense blue imaginable.

Amœna (Siberica) bright intense blue, per dozen, 20 cents; per hundred, 75 cents; per thousand, \$6.00.

Præcox alba, pure white, per dozen, 20 cents; per hundred, \$0.85; per thousand, \$7.50.

Ixiolirion Montanum ( Azure Amaryllis). Color, clear deep blue; stems long and graceful, flowers large. Per dozen, 25 cents; per 100, \$1.25; per 1000, \$10.00.

### Sparaxis

A very distinct and interesting group.

The mixture is conspicuous by the brilliant colors, almost every shade of crimson, scarlet and white being found.

Fine mixed, per dozen, 15 cents; per hundred, 75 cents; per thousand, \$5.00.

### Ornithogalum Arabicum

When grown in the garden they make an interesting and pretty sight. They also make an elegant greenhouse or window decoration, and florists grow them largely for their value as cut flowers. Being robust and hardy the bloom remains perfect for many weeks. Per dozen 25 cents; per 100, \$1.50; per 1000, \$12.00.

ORNITHOGALUM ARABICUM

# VICK'S

# LILIES



L. ELEGANS  
INCOMPARABLE

## LILIUM LONGIFLORUM

	Per Doz	Per 100
Lilium auratum, . . . . .	\$1 25	\$8 00
Canadense . . . . .	1 00	6 00
Candidum . . . . .	(See page 4)	
Elegans atrosanguineum . . . . .	1 50	10 00
Elegans Batemani . . . . .	1 50	9 00
Elegans, best red . . . . .	1 50	9 00
Elegans Incomparable . . . . .	1 50	9 00
Elegans Wallacei . . . . .	1 50	9 00
Elegans, fine mixed . . . . .	1 25	8 00
Giganteum . . . . .	(See page 4)	
Harrisii (Bermuda Easter) . . . . .	(See page 3)	
Longiflorum Japonicum . . . . .	(See page 4)	
Longiflorum Formosum . . . . .	(See page 4)	

## SPECIOSUM RUBRUM

Longiflorum Multiflorum . . . . .	(See page 4)	
Lancifolium or Speciosum:		
Album Monstrosum . . . . .	1 50	10 00
Rubrum . . . . .	1 25	8 00
Melpomene . . . . .	1 25	8 00
Magnificum . . . . .	1 25	8 00
Leichtlini Orange . . . . .	1 25	8 00
Leichtlini Maximowiczii . . . . .	1 35	9 00
Pardalinum . . . . .	1 25	8 00
Phillipense . . . . .	1 25	8 00
Superbum (Turk's Cap) . . . . .	1 20	7 00
Tenuifolium . . . . .	1 25	8 00
Tigrinum Splendens (Single Tiger) . . . . .	75	5 00
Tigrinum fl.pl. (Double Tiger) . . . . .	90	6 00

## Calla Lilies Dry Bulbs

Superior for forcing. Our bulbs are thoroughly ripened and come direct from one of the largest growers in the world.

	Per doz.	Per 100
Selected bulbs, 2 in. and up	1 25	8 50
Mammoth bulbs, 2 1/2 in. and up	1 75	12 00

## Ranunculus

	Per doz.	Per 100	Per 1000
Best mixed French . . . . .	\$0 10	\$0 50	\$4 00
Best mixed Persian . . . . .	10	60	4 50
Best mixed Turban . . . . .	10	60	4 50

## Iris

The Iris, or Flowering Flag, or *Fleur de lis* of the French, is a well known family of hardy border flowers. Bloom from May to July. (For Japan and German Iris see page 20.)

	Per doz	Per 100	Per 1000
Anglica, mixed sorts	\$0 15	\$0 90	\$8 50
Hispanica, mixed var.	10	35	2 50
Pavonia . . . . .	20	1 25	10 00

## Ixia

Best mixed . . . . .	10	50	3 50
----------------------	----	----	------

# Trees, Berry Plants, Grapevines, Strawberrys

## APPLE TREES

	Each	Per 10	Per 100
XXX 5-7ft. . . . .	\$0 30	\$2 50	\$20 00
XX 4-5ft. . . . .	25	2 00	16 00
X 3-4ft. . . . .	20	1 50	10 00

### VARIETIES

Baldwin	Northern Spy
Ben Davis	Maiden Blush
Crimson Beauty	McIntosh Red
Delicious	King
Duchess	Red Astrachan
Early Harvest	Rome Beauty
Fall Pippin	Roxbury Russett
Fameuse	Stayman's Winesap
Golden Russett	Spitzenburg
Gravenstein	Sweet Bough
R. I. Greening	Talman Sweet
Jonathan	Winter Banana
Grimes Golden	Wolf River
Yellow Transparent	

### CRAB APPLES

Excelsior	Transcendant
Hyslop	Whitney

## PEACH TREES

	Each	Per 10	Per 100
XXX 4-6ft. . . . .	\$0 25	\$2 00	\$12 00
XX 3-4ft. . . . .	20	1 50	9 00
X 2-3ft. . . . .	15	1 00	6 00

### VARIETIES

Belle of Georgia	Elberta
Carman	Fitzgerald
Champion	Foster
Chairs' Choice	Greensboro
Crawford Early	Mountain Rose
Crawford Late	Niagara
Crosby	Yellow St. John
Wonderful	

## PEARS

	Each	Per 10	Per 100
XXX 5-7ft. . . . .	\$0 35	\$3 00	\$25 00
XX 4-5ft. . . . .	30	2 50	20 00
X 3-4ft. . . . .	25	2 00	15 00

### VARIETIES

Anjou	Lawrence
Bartlett	Kieffer
Clapp's Favorite	Seckel
Duchess	Wilder
Flemish Beauty	Worden Seckel
Dwarf Pears . . . . .	\$0 30 \$2 50 \$20 00

## CHERRY

	Each	Per 10	Per 100
XXX . . . . .	\$0 35	\$3 25	\$30 00
XX . . . . .	30	3 75	25 00
X . . . . .	25	2 25	20 00

### SOUR

Dyehouse
Early Richmond
English Morello
Montmorency
Ostheim

### SWEET

Black Tartarian
Bing
Lambert
Governor Wood
Napoleon

## PLUMS

	Each	Per 10	Per 100
XXX 5-7ft. . . . .	\$0 35	\$3 00	\$25 00
XX 4-5ft. . . . .	30	2 50	20 00
X 3-4ft. . . . .	25	2 00	15 00

### VARIETIES

Abundance	Reine Claude
Bradshaw	Shipper's Pride
Burbank	Shropshire Damson
German Prune	Wickson
Lombard	York State Prune
Red June	

## QUINCES

	Each	Per 10	Per 100
XXX . . . . .	\$0 40	\$3 50	\$30 00
XX . . . . .	0 35	3 00	25 00

## BLACKBERRIES.

	Doz.	100	1000
Blowers New . . . . .	\$0 75	\$3 50	\$25 00
Eldorado . . . . .	60	3 00	20 00
Rathbun . . . . .	60	3 00	20 00
Snyder . . . . .	60	3 00	20 00

## CURRENTS.

	Each	Doz.	100
Black Champion . . . . .	\$0 15	\$0 90	\$6 00
Cherry, red . . . . .	15	80	5 50
Fay's Prolific, red . . . . .	15	80	5 50
Perfection . . . . .	20	1 75	15 00
Red Cross . . . . .	15	85	6 00
White Grape . . . . .	15	85	6 00

## GOOSEBERRIES.

	Each	Doz.	100
Chautauqua . . . . .	\$0 20	\$1 50	\$ 9 50
Downing . . . . .	20	1 50	9 50
Industry . . . . .	20	1 50	9 50
Pearl . . . . .	20	1 50	9 50
Red Jacket . . . . .	20	1 50	9 50

## RASPBERRIES — RED.

	Doz.	100	1000
Columbian . . . . .	\$0 40	\$1 75	\$15 00
Cuthbert . . . . .	40	1 50	12 00
Loudon . . . . .	45	2 00	15 00
Miller's Red . . . . .	45	2 00	15 00
St. Regis . . . . .	80	3 00	25 00

## RASPBERRIES — BLACK.

	Doz.	100	1000
Cumberland . . . . .	\$0 50	\$2 00	\$15 00
Gregg . . . . .	50	2 00	15 00
Kansas . . . . .	50	2 00	15 00
Plum Farmer . . . . .	50	2 00	15 00
Black Diamond . . . . .	50	2 00	15 00

## GRAPES.

	Each	Doz.	100
Agawam . . . . .	\$0 12	\$0 90	\$ 5 00
Brighton . . . . .	12	90	5 00
Campbell's Early . . . . .	25	2 00	20 00
Catawba . . . . .	12	90	5 00
Concord . . . . .	10	75	5 00
Delaware . . . . .	12	90	6 50
Diamond . . . . .	18	1 10	6 25
Moore's Early . . . . .	20	1 25	7 25
Niagara . . . . .	12	90	5 00
Pocklington . . . . .	18	1 10	6 25
Worden . . . . .	12	90	5 50

## Pot-grown STRAWBERRY Plants

	Doz.	100	1000
Chesapeake . . . . .	\$0 50	\$4 00	\$22 00
Corsican . . . . .	50	4 00	22 00
Early Ozark . . . . .	50	4 00	22 00
Gandy . . . . .	50	4 00	22 00
Glen Mary . . . . .	50	4 00	22 00
Ryckman . . . . .	50	4 00	22 00
New York . . . . .	50	4 00	22 00
Sample . . . . .	50	4 00	22 00
Senator Dunlap . . . . .	50	4 00	22 00
Stevens Late Champion . . . . .	50	4 00	22 00
William Belt . . . . .	50	4 00	22 00
Vick's Uncle Joe . . . . .	75	6 00	30 00
Progressive (Fall bearing)	90	6 00	30 00

# PLANTS AND BULBS

LIMITED SPACE does not permit us to enumerate our entire list of Plants and Bulbs. Prices on other varieties will be furnished on request. It is our aim to offer the best stocks obtainable—strong, true to name, and free from disease and insects. We prefer to furnish the Best, not the Cheapest. No charge for packing. Unless so requested, we never ship plants by freight. To insure safe packing, greenhouse plants are always removed from the pots.

## Tender Plants and Bulbs.

	Per doz	Per 100
Abutilons, in variety . . . . .	\$0 60	\$ 4 00
Amaryllis Johnsoni. Large bulbs, each 25c . . . . .	2 50	20 00
Amaryllis Vittata Hybrids, Giant flowering; each 50c . . . . .	5 50	
Amaryllis Chlidanthus fragram . . . . .	60	4 00
Araucaria excelsa, 10 to 12 inches high, extra fine, each 50c. . . . .	75	5 00
Achania Malvaviscus . . . . .	75	5 00
Asparagus plumosus nanus 2½-inch pots . . . . .	50	4 00
3-inch pots . . . . .	60	5 00
Sprengeri, 2½-inch pots . . . . .	50	4 00
Azaleas, ready in October, Each . . . . .		Per doz
14 to 16-inch heads . . . . .	75	8 75
12 to 14-inch heads . . . . .	65	7 50
10 to 12-inch heads . . . . .	50	5 50
Begonias, flowering varieties, Per doz . . . . .	75	5 00
Rex varieties, 2¼-inch pots . . . . .	60	4 00
3-inch pots . . . . .	85	6 00
Carnations, general collection, from open ground, . . . . .	75	5 00
Beacon . . . . .	1 00	7 00
Harlowardin . . . . .	1 00	7 00
Pink Enchantress, Rose . . . . .		
Pink Enchantress, White . . . . .		
Enchantress, White Perfection, Winsor and Mrs. Lawson . . . . .	85	6 00
Calla, Little Gem (green plants) . . . . .	75	5 00
Cannas, general collection . . . . .	50	3 00
Carex Japonica variegata . . . . .	60	4 00
Dahlias . . . . .	75	6 00
Dracaena Indivisa, field grown, ready for 5-inch pots . . . . .	2 00	15 00
Ficus elastica (Rubber Tree) 4-inch pots, 25 cts. each . . . . .		
5-inch pots, 35 cts. each . . . . .		
Fuchsia, general collection . . . . .	60	\$4 00
Ferns, for fern dishes, Adiantum, Cuneatum, Aspidium, Tsussimense, Cyrtotomium Falcatum, Pteris, Cretica Albo lineata, Hastata, Serrulata, Wilsoni, Wimsetti, . . . . .	\$0 60	\$ 4 00

	Per doz.	Per 100
Nephrolepis Bostoniensis, (Boston Fern) 2½-inch pots . . . . .	60	4 00
Large plants from bench, each 12c., 25c. and 35c., according to size. . . . .		
Nephrolepis Scholzei Fringed Scotti, 2½-inch pots . . . . .	60	4 00
Large plants from bench, each 15c., 25c. and 35c. . . . .		
Nephrolepis Whitmani . . . . .		
2½ inch pots . . . . .	60	4 00
Large plants from bench, 25c. and 35c. . . . .		
Nephrolepis Scotti. The new dwarf Boston Fern. 2½-inch pots . . . . .	60	4 00
Large plants from bench, 25c. and 35c. . . . .		
Roosevelt fern. 2½ inch pots . . . . .	60	4 00
Large plants from bench, two sizes each 25c and 35c. . . . .		
Teddy, Jr. Plants from bench, two sizes each, 25c and 35c. . . . .		
Gladiolus, mixed . . . . .	20	1 25
Hydrangea Otaksa, 3 in pots . . . . .	1 00	7 00
Field-grown, each 10 cts. . . . .		
Jasminum grandiflorum . . . . .	75	5 00
Lemon Verbena . . . . .	60	4 00
Madeira Vine . . . . .	30	1 50
Oleander, double pink, 3-in. pots . . . . .	85	6 00
Variegated, 3-inch pots . . . . .	1 00	7 00
Otaheite Orange, 2½ inch pots . . . . .	1 00	7 00
Extra strong plants 4-in. pots . . . . .	1 75	12 00
Palms—Kentia Belmoreana. 10-12 inches, each \$ 15 . . . . .		
18-20 inches, each 75 . . . . .		
28-30 inches, " 2 00 . . . . .		
30-34 inches, " 2 75 . . . . .		
Kentia Forsteriana . . . . .		
10-12 inches, each \$ 15 . . . . .		
12-15 inches, each 35 . . . . .		
18-24 inches, " 75c . . . . .		
20-24 inches, " 1 00 . . . . .		
26-28 inches, " 1 50 . . . . .		
Kentia Forst. made up in tubs 28-30 inches., each 2 50 . . . . .		

	Per Doz	Per 100
Primroses, single white or pink	\$0 75	\$5 00
Baby Primrose (P. Forbesii)	75	5 00
Roses, monthly,	75	6 00
Smilax	40	3 00
Vinca major var., field grown	75	6 00

## Hardy Shrubs and Vines

	Per Doz	Per 100
Akebia quinata, 1 year	\$0 75	\$6 00
Ampelopsis quinquefolia	85	6 00
Veitchii, field grown	1 25	8 00
Bignonia radicans,	85	5 00
Chinese Matrimony Vine	50	4 00
Clematis paniculata, 2 year, per 1000, \$60	85	7 00
Jackmanii, Madam Edouard Andre and Henryi	2 00	15 00
Honeysuckle (Climbing), Heckrotii, 2 year	1 50	10 00
Hydrangea paniculata grand. 2 year	1 50	12 00
1 year	85	6 00
Hydrangea arborescens grandiflora alba, strong, 1 year, field grown	1 00	7 00
2 year	1 50	10 00
Ivy, English, 2 1/2 inch pots	40	3 00
“ “ 3 “ “	50	4 00
“ “ 3 1/2 “ “	1 00	7 00
Roses, Hybrid Perpetuals 2 year	2 00	15 00
Ramblers, Crimson, Pink, White, Yellow, 2 yr.	1 50	12 00
Philadelphia Rambler, 2 year	2 00	15 00
Dorothy Perkins, 2 year	1 50	12 00
Lady Gay, 2 year	1 25	8 00
Tausendschoen, 2 year	1 25	8 00
Spiræa Arguta, Billardi, Billardi alba, Bumalda, Douglassi, Anthony Waterer	1 25	8 00
Blue Spirea	85	6 00
Tamarix Africana	85	6 00

## Hardy Bulbs and Roots

	Per Doz	Per 100
Achillea The Pearl, Millefolium roseum, tomentosum	\$0 75	\$5 00
Alyssum Saxatile, compactum	85	6 00
Anchusa Italica (Dropmore variety)	85	6 00
Anthemis Tinctoria	85	6 00
Anemone, Queen Charlotte, Whirlwind, Japonica Alba	1 00	7 00
Aquilegia chrysantha and cœrulea, Skinneri, Erskine Park Hybrids, double mixed and single mixed	85	6 00

	Per Doz	Per 100
Armeria (Thrift or Sea Pink)	75	5 00
Arabis alpina	75	5 00
Artemesia Latifolia	85	6 00
Asters, (Michaelmas Daisies) in variety	85	6 00
Boltonia Asteroides	85	6 00
Cerastium Tomentosum	85	6 00
Chives	50	3 00
Cinnamon Vine	60	4 00
Clematis Davidiana	85	6 00
Campanulas, Media or Canterbury Bell, Carpatica Blue and White, Persicifolia Blue and White, Pyramidalis, Blue and White	85	6 00
Coreopsis lanceolata grandifl.	85	6 00
Daisy, Shasta	85	6 00
Delphinium, Elatum, Formosum, Formosum Coelestinum, Sinensis	85	6 00
Digitalis, in variety	85	6 00
Erianthus Ravennae	85	6 00
Eulalia Japonica variegata	85	6 00
gracillima univittata	85	6 00
zebrina	1 00	7 00
Euphorbia Corollati	85	6 00
Funkia Japonica, light blue	75	5 00
undulata media picta, var'd Alba, white	1 20	10 00
Gaillardia grandiflora	85	6 00
Gypsophila paniculata	85	6 00
Hibiscus, Hardy Large-flow'g Crimson Eye, Militaris	85	6 00
Hemerocallis flava, Yellow Day Lily	85	6 00
Hemerocallis Aurantiaca Major, or Golden Day Lily, each 20 cents	1 75	
Helianthus latæfrons, Maximiliana, Multiflorus Ple-nus	85	6 00
Helianthemum Vulgare	85	6 00
Hollyhocks, in colors, field grown roots, double	85	6 00
New Mam. Fr'd Allegheny	85	6 00
Iris Kæmpferi, named	1 00	7 00
“ mixed	75	5 00
Germanica, mixed	60	4 00
„ named	75	5 00
Iberis sempervirens	85	6 00
Lamium Purpureum	85	6 00
Lavender, sweet scented	75	5 00
Lobelia cardinalis	85	6 00
Lychnis Chalcedonica, Viscaria- Viscaria fl-pl	85	6 00
Lycoris, squamigera	1 00	7 00
Lysimachia clethroides	85	6 00
Lythrum roseum superbum	85	6 00
Monarda didyma	85	6 00
Myosotis Palustris	85	6 00
Pardanthus Sinensis	85	6 00

	Per Doz	Per 100		Per doz	Per 100
Pentstemon Coerulea . . . . .	\$0 85	\$6 00	Pyrethrum roseum . . . . .	\$0 75	\$5 00
"    Barbatus Torreyii . . . . .	85	6 00	Rudbeckia Golden Glow . . . . .	60	6 00
Perennial Pea, pink, crimson, red. . . . .	85	6 00	Newmani, purpurea . . . . .	85	6 00
Peonies, fine collection . . . . .	1 25	9 00	Salvia Pratensis . . . . .	85	6 00
White . . . . .	1 50	12 00	Scabiosa Caucasica . . . . .	85	6 00
Tenuifolia fl.pl. . . . .	3 00	22 50	Sedum, in variety . . . . .	75	5 00
Perennial Phlox, named varieties, field grown . . . . .	85	6 00	Spiræa, aruncus, palmata, elegans, . . . . .	85	6 00
Phlox Subulata, The Bride . . . . .	75	6 00	Stokesia cyanea . . . . .	75	5 00
Physostegia, Virginica, alba, coerulea . . . . .	85	6 00	Sweet William, Crimson, White, Holborn Glory and mixed . . . . .	85	6 00
Pinks, fine collection (clumps) . . . . .	85	6 00	Thermopsis Caroliniana . . . . .	85	6 00
Platycodon grandiflorum . . . . .	85	6 00	Tritoma McOweni . . . . .	85	6 00
Poppy, Oriental . . . . .	85	6 00	"    Pfitzeri . . . . .	1 00	7 00
Poppy, Iceland, white, yellow and orange . . . . .	75	5 00	Veronica spicata . . . . .	85	6 00
			Yucca filamentosa, 1 year . . . . .	85	6 00
			"    2 year . . . . .	1 00	8 00

## Miscellaneous Flower Seeds For Florists and Market Gardeners

NOTE—Where flower seeds are quoted at 10 cents per ounce, if smaller quantities are wanted we will send our regular packets at 50 per cent. discount from retail prices.

	Per lb.	Per oz.		Per lb.	Per oz.
<b>Antirrhinum</b> —Giant strain Bright crimson; Brilliant scarlet and golden, white throat; Firefly, scarlet, white throat; Queen Victoria, pure white; Striped, yellow and orange. . . . .		\$0 50	<b>Cineraria</b> hybrida, choice mixed, Per packet 25 c.; 1-64 oz. \$0.75.		
Giant-flowered, mixed . . . . .		40	Extra choice, prize strain, 1-128 oz. \$0 75.		
<b>Alyssum</b> —Little Gem . . . . .	\$3 00	30	<b>Cineraria</b> maritima (candidissima) (Dusty Miller) . . . . .		25
<b>Aquilegia</b> —double, mixed . . . . .		20	<b>Cobæa</b> scandens, blue . . . . .		40
Single, mixed . . . . .		20	scandens, white . . . . .		60
<b>Asparagus plumosus nanus</b> —Greenhouse grown stock. 100 seeds, 50c. 1000 seeds, \$3.75. Sprengeri, 250 seeds, 25c; 1000 seeds, 75c.			<b>Coreopsis</b> lanceolata grdf. . . . .		20
<b>Calceolaria</b> hybrida grandiflora, large flowered, splendid strain, 1-128 oz. 50 cts.			<b>Cyclamen</b> Persicum giganteum, choice mixed 1-32 oz., or about 100 seeds, . . . 30c. Vick's Giant, splendid mixture, 1-32 oz., 50c.		
<b>Candytuft</b> —White Rocket . . . . .	75	10	<b>Daisy</b> (Bellis perennis). Longfellow, flowers very large, dark rose, 1-16 oz. 15 cents . . . . .		1 75
Empress, large, white . . . . .	1 75	20	Snowball, large flower, double white, extra fine quality 1-16 oz. 15 cents . . . . .		1 75
Dunnett's Ex. Dark Crimson . . . . .		15	Choicest double, mixed, 1-16 oz. 15 cents . . . . .		1 50
Mixed colors . . . . .	1 00	10	Extra double, white, 1-16 oz. 15 cents . . . . .		1 50
<b>Canterbury Bell</b> (Campanula Medium), Single varieties mixed . . . . .	2 75	25	<b>Daisy, Shasta</b> —Seed from our own stock plants 1-16 oz. 10c . . . . .		1 25
Double varieties mixed . . . . .		75	<b>Delphinium</b> —Formosum (blue) Chinese Mixed . . . . .		60 25
Calycanthemum (Cup and Saucer), mixed . . . . .		1 00	<b>Digitalis</b> (Foxglove) Extra choice, mixed . . . . .		25
<b>Carnation</b> —Early flowering Vienna, extra fine double mixed, excellent for cutting 1-16 oz. 10 cents . . . . .		1 25			
		90			

	Per lb.	Per oz.		Per lb.	Per oz.
<b>Dracaena Indivisa—</b>		\$0 30	<b>Poppy Oriental—</b>		
<b>Fuchsia—</b> Choice mixed, single and double, 100 seeds, 25 cts.			Darkest red . . . . .		\$0 75
<b>Geranium zonale</b> , best mixed		75	Excelsior, New Hybrids . . . . .		1 25
<b>Gloxinia hybrida</b> , from Benary's choice collection. 1-64 oz. 85 cents . . . . .			<b>Primula Sinensis—</b>		
<b>Grevillea robusta</b> . . . . .		50	Choicest fringed, mixed, . . . . .		
<b>Hollyhock—</b> Mam. Fringed Allegheny choice mixed . . . . .	\$5 00	50	1-128 ounce, 75c . . . . .		
Fine double mixed . . . . .		1 00	<b>Primula obconica</b> , white, fine for pots, 1-64 oz. 35 cents		
<b>Lobelia—</b> Barnard's Perpetual 1/8 oz. 15 cents		75	Obconica grandiflora, hybrids mixed, 1-64 oz. 25 cts.		
<b>Mignonette—</b> Sweet (Reseda odorata) . . . . .	75	10	vulgaris (English Primrose) 1/8 oz. 25 cents		1 50
Allen's Defiance . . . . .		30	<b>Rudbeckia—</b> Golden Glow . . . . .		20
Bismarck—Imp'd Matchet Machet, true dwarf, fine for pot culture and borders		50	<b>Salpiglossis—</b> Emperor, large-flowered mixed . . . . .		65
Machet, Red . . . . .		20	<b>Smilax</b> (Myrsiphyllum asparagoides) . . . . .		35
Miles' Hybrid Spiral . . . . .		25	<b>Stock—</b> Dwarf Forcing, Ten-Weeks "Snow - Flake" 1-64 oz. 25 cts. . . . .		
Golden Queen . . . . .		15	Dresden Perpetual White, "Cut and come again" 1/8 ounce 50 cents . . . . .		3 00
Parsons' White . . . . .		20	Large-Flowering Dwarf, Ten-Weeks, mixed colors . . . . .		2 50
<b>Myosotis—</b> (Forget-me-not) Alpestris grandiflora, blue . . . . .		15	Early Large flowering winter, 1-16 oz. 25 cents.		
Alpestris, mixed . . . . .		20	Giant White Nice, 1/8 oz. 25 cents . . . . .		
Palustris semperflorens 1-8 oz. 20 cents . . . . .		30	Giant Yellow Nice, 1-16 oz. 25 cents . . . . .		
<b>Pansy—</b> Masterpiece, new class of Giant Blotched varieties, fine rich colors, 1-8 oz. 60c. . . . .		1 25	Beauty of Nice, delicate fleshy pink, 1/8 oz. 35c.		
<b>Vick's Superb Mixture</b> of choicest strains, 1/8 oz. 75 cts		3 50	Queen Alexandra, rosy lilac, 1-16 oz. 20 cents . . . . .		2 00
<b>Vick's Peerless Mixture</b> 1/8 oz. 60 cts. . . . .		5 00	Crimson King, fiery crimson, 1-16 oz. 20 cents . . . . .		2 00
<b>Orchid Flowering Almond</b> Flowered, soft pink; Day-break, vermilion and cham-ouis red; Sunlight, brilliant yellow with large red brown spots 1/8 oz. .60 cts. . . . .		3 00	<b>Sweet Peas—</b> Forcing kinds For other varieties see our General Wholesale List.		
Mixed Colors 1/8 oz. 50 oz. . . . .		4 00	Christmas White . . . . .	1 50	15
<b>Trimardeau or Giant</b> , . . . . .		3 50	Earliest of all, Pink and White	1 00	10
" Adonis, light blue . . . . .		1 50	Mont Blanc . . . . .	1 00	10
" Andromeda, violet white . . . . .		1 50	Mrs. C. H. Totty, Lavender . . . . .	1 00	10
" Emperor Franz Joseph . . . . .		1 50	Mrs. F. J. Dolansky, pure Pink	1 00	10
" Golden Yellow . . . . .		1 50	<b>Sweet William—</b>		
" King of the Blacks . . . . .		1 50	Holborn Glory, extra large flowers, finest shades . . . . .		35
" Lord Beaconsfield . . . . .		1 50	Dunnett's Dark Crimson . . . . .		20
" Pure Yellow . . . . .		1 50	Double White . . . . .	1 50	15
" Snowflake . . . . .		1 85	Single White . . . . .	1 50	15
" Solfataro, Sulphur . . . . .		1 75	Double, finest mixed . . . . .		20
" Volcano, deep red . . . . .		1 75	Single, finest mixed . . . . .		10
" White, with dark eye . . . . .		1 50	<b>Vinca—</b> mixed . . . . .		50
" Yellow, with dark eye . . . . .		1 50	<b>Wallflower—</b> Finest double, mixed, 1-16 oz. 20 cts. . . . .		2 00
Giant flowering choice mixed		1 25	Single, finest mixed . . . . .		20
<b>Poppy, Iceland,</b> Orange, White, Yellow, and Mixed each . . . . .		50			



# FERTILIZERS, INSECTICIDES AND FLORISTS' SUPPLIES

**PRICES QUOTED HERE ARE NET CASH, AND SUBJECT TO MARKET CHANCES**

- Clay's Fertilizer.** A well known English fertilizer for forcing greenhouse plants  
5 lbs., 65 cents; 10 lbs., \$1.00; 28 lbs., \$1.75; 56 lbs. \$3.25; 112 lbs., \$6.00.
- Pulverized Sheep Manure.** Practically odorless. Highly recommended for lawn, garden and  
greenhouse use. 100 lb. bag, \$1.75; ton, \$26.00.
- Nitrate of Soda.** (Chili Saltpeter.) The best and cheapest form of Nitrogen for plants.  
Highly concentrated and immediately available. Nothing like it to make plants grow.  
10 lbs., 50 cents; 25 lbs., \$1.15; 50 lbs., \$2.00; 100 lbs., \$3.25., 200 lbs., \$6.00
- Scotch Soot.** Per Bag (circ. 112 pounds) \$2.50.
- Wood Ashes.** High Potash Analysis. Per 100 pounds \$1.50; ton, \$20.00.
- Pure Raw Bone Meal.** 50 lbs., \$1.25; 100 lbs. \$2.00; 200 lbs. \$3.75.
- Aphis Punk.** Excellent for aphis, red spider, white, green and black fly and thrip. (For  
greenhouse only.) Per box of 12 rolls, 60 cents; per dozen boxes, \$6.50.
- Black Leaf 40.** A concentrated solution of Nicotine sulphate which does not evaporate like  
"free" nicotine, in ordinary temperatures. Therefore especially valuable for spraying in  
the gardens, nursery or orchard. 1/2 pound can, 75 cts; 2 pound can, \$2 50; 10 pound  
can, \$10.75.
- Bug-Death.** For potato bugs and blight; contains no arsenic and does not easily wash off.
- |                           |        |                                |        |
|---------------------------|--------|--------------------------------|--------|
| 1 pound package . . . . . | \$0 12 | 12 1/2 pound package . . . . . | \$0 90 |
| 3 " " . . . . .           | 30     | 100 " keg . . . . .            | 7 00   |
| 5 " " . . . . .           | 45     |                                |        |
- Bordeaux Mixture.** For mildew and fungus. Pint, 20 cents; Qt. 35 cents; 1 gal., 90 cents.
- Dalmatian (Persian) Insect Powder.** 1/4 lb., 20 cents; 1/2 lb., 35 cents; 1 lb., 60 cents.
- Nicoticide.** (Liquid.) For fumigating and spraying. The active principle of tobacco.  
4 oz., 70c; 1/2 pt., \$1.25; 1 pt., \$2.50; 1 qt., \$4 50; 1/2 gal., \$8.25; 1 gal., \$15.00.
- Nicofume.** Tobacco paper in sealed tin cans. Most effective and best method of fumigation  
1 in cans (24 sheets) \$0.85; 1 gross can (144 sheets,) \$4.00; 2 gross can (288 sheets) \$7.50.
- Nicofume Liquid.** 1/4 lb., 50c.; 1 lb., \$1.50; 4 lbs., \$5.50; 8 lbs., \$10.50.
- Nikoteen** A powerful nicotine extract. 1 3/4 oz. bottle, 40 cts.; 1/2 lb., 85 cts.; 1 lb., \$1.50.
- Sulpho-Tobacco Soap.** Used as a wash for roses, trees, and house plants. Also for in-  
sects on animals. Small size, per dozen, 85 cents; large size, per dozen, \$1.50.
- Tobacco Dust.** (coarse) For fumigating. Per lb., 7 cents; 5 lbs., 25 cents.; 10 lbs. or  
over, 4 cents per lb.; 100 lbs, \$3.50.
- Tobacco Dust** (fine) For dusting. 1 lb., 10 cents; 5 lbs., 30 cents; 10 lbs. or over  
5 cents per lb.; 100 lbs., \$4.50.
- Fish Oil Soap.** Used as a wash for roses, trees, and plants affected with insects.  
1 lb. box, 15 cents; per dozen, \$1.50. 1/2 lb. box, 10 cents, per dozen, \$1.00.
- Mastica.** For glazing work. It is a putty-like preparation made especially for the purpose.  
Sets quickly, can be used in cold weather, does not crack. Use in a putty bulb or machine.  
Per quart, 40 cents; gallon pails, \$1.25. Machine for applying, \$1.25. Putty Bulbs, 95 cents.
- Pot Labels.** Painted, per 1000—4 inch, 70 cts.; 4 1/2 inch, 80 cts.; 5 inch, 95 cts.; 6 inch,  
\$1 20; 10 inch, \$3 50; 12 inch, \$5 00.
- Raffia.**—Natural, per pound, 15 cents; 5 lbs, 70 cents; 10 lbs., \$1.25.  
Colored, per lb., 50 cents.
- Sprinklers.** "Tyrian." Rubber, made with a perforated detachable top; valuable for win-  
dow gardening, bouquet sprinkling, dampening clothes, and florists' general use.
- |                                   |         |                                   |        |
|-----------------------------------|---------|-----------------------------------|--------|
| 6-ounce size, straight neck . . . | \$0 60. | 8-ounce size, straight neck . . . | \$0 80 |
| 6-ounce size, bent neck . . . . . | 70.     | 8-ounce size, bent neck . . . . . | 90     |

# VICK QUALITY NARCISSUS

PRINCEPS

EMPEROR

DOUBLE  
VAN SION

EMPRESS

JAMES VICK'S SONS  
ROCHESTER, N.Y.