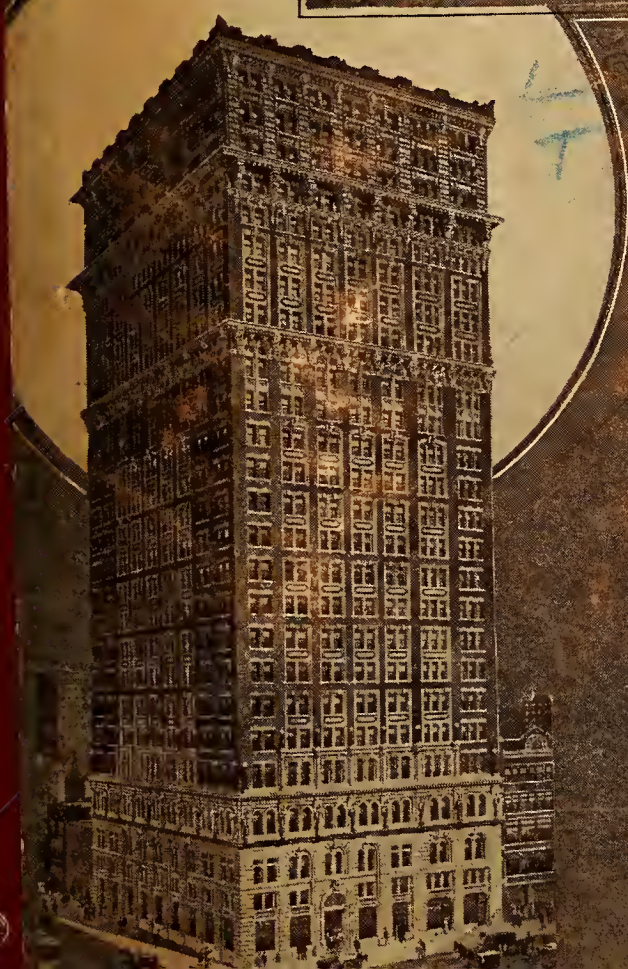
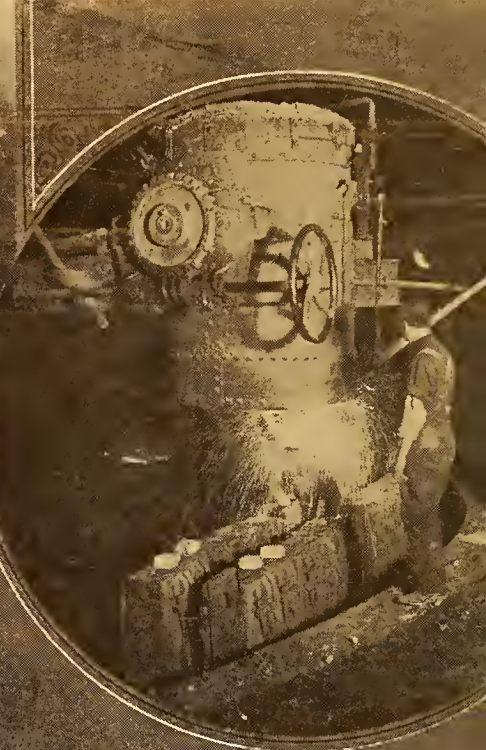


F
159
P6G72



GREATER Pittsburgh





Class F159

Book P6 G72

Copyright N^o _____

COPYRIGHT DEPOSIT



PITTSBURGH



THE City of Pittsburgh is the metropolis of Western Pennsylvania, the second city of the great industrial State, and the county seat of Allegheny County. Located in the very heart of the vast Pennsylvania coal fields—the richest in the world, embracing an area of more than 14,000 square miles—its situation has given it the leading position in the coal, iron, steel and glass industries of the United States.

As early as 1730 the confluence of the Allegheny and the Monongahela was a center of trading operations with the Indians. George Washington visited the spot and noted its military importance in 1753. In 1754 a small fortification was erected by a company of Virginian militia, but they were scattered by a larger force of French soldiers, who enlarged and completed the defences and named them Fort Duquesne. Several attempts were made by British and Colonial expeditions to capture this post. Three years after Braddock's disastrous defeat, eight miles from the fort, it was occupied by troops under General Forbes, November 25, 1758, who immediately re-named the place "Pittsburgh" in honor of William Pitt, the Prime Minister of England.

For years the town was only a frontier post. Its real growth did not begin until the place was secure from Indian hostilities. In 1796 the population was only 1,400, but its growth since that time has been astounding. During the first ten years of the nineteenth century, ship yards, foundries, banks, cotton factories, and metal working establishments came into existence in Pittsburgh, the latter destined to receive its fullest development here. The opening of the Pennsylvania Canal in 1834 and the extensive building of railroads which followed gave the city an impetus which has advanced Pittsburgh steadily in industrial and commercial importance until it holds fifth place among the cities of the United States.

Within the present city limits there is capital invested in manufacturing to the amount of \$200,000,000, and the annual product from over 2,000 establishments employing 75,000 hands is estimated to be worth \$300,000,000. Greater Pittsburgh which includes the city of Allegheny produces about one-fourth of the entire output of pig iron in the country, over \$3,000,000 worth of manufactured glass and 500,000 pounds of copper goods.

During recent years the city has been awakened to its possibilities in artistic development, and as a result, fine streets, splendid boulevards, unrivalled parks, and other manifestations of an enlightened civic pride have placed the erstwhile "Smoky City" among the ranks of the beautiful municipalities of the country.

PUBLISHED BY L. H. NELSON COMPANY, PORTLAND, MAINE.

PROPRIETORS OF NELSON'S INTERNATIONAL SERIES OF SOUVENIR BOOKS



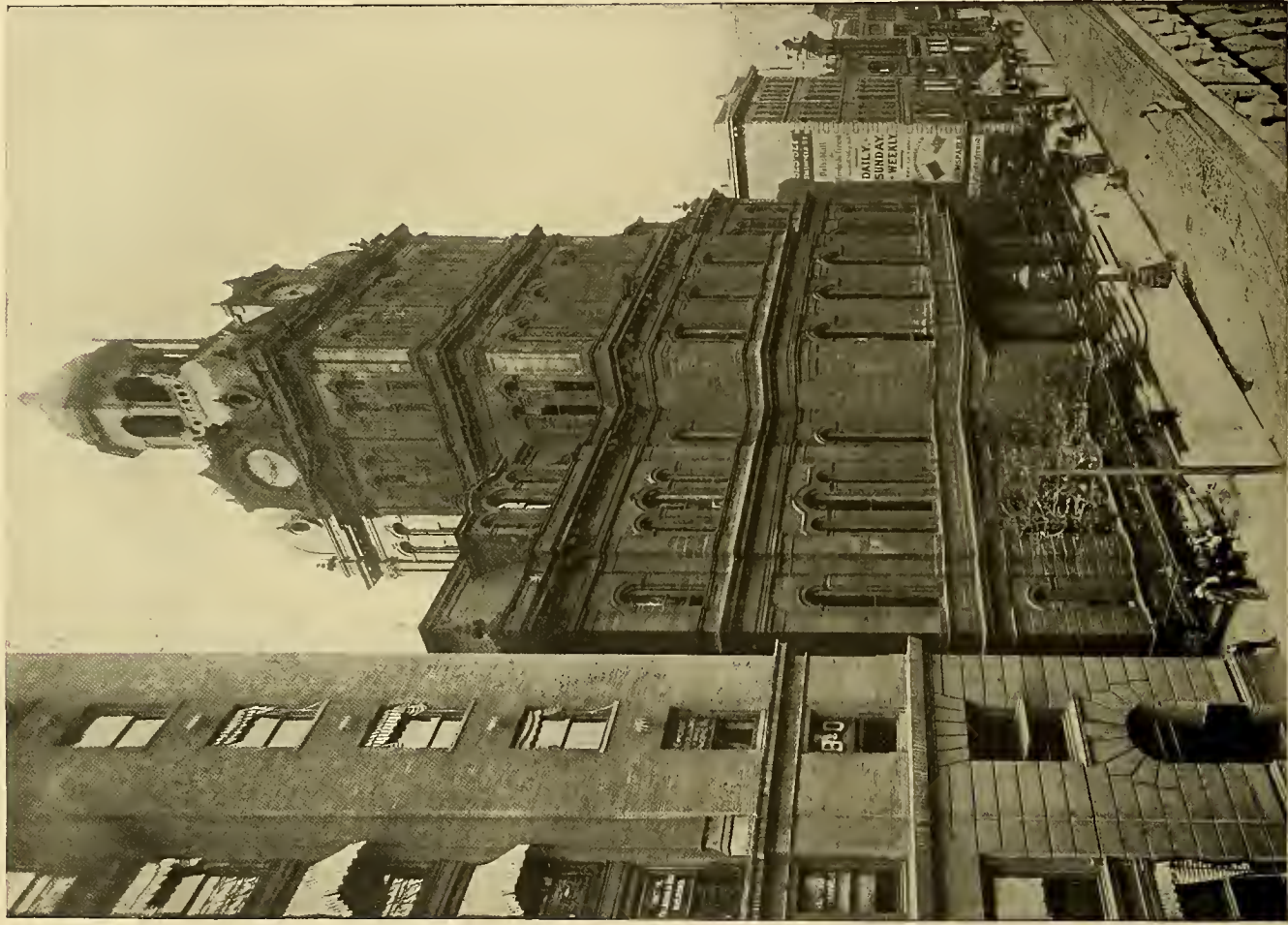
PITTSBURGH FROM TOP OF LAKE ERIE RAILROAD STATION "SOUTH SIDE"

A view showing the Smithfield Street Bridge over the Monongahela, the river bank, and the modern architecture of the business section of the city. The Pittsburgh skyscrapers rise from twelve to twenty-four stories in height and are not surpassed for excellence of construction by any in the country. The building at the right with tower is the immense Allegheny County Court House.



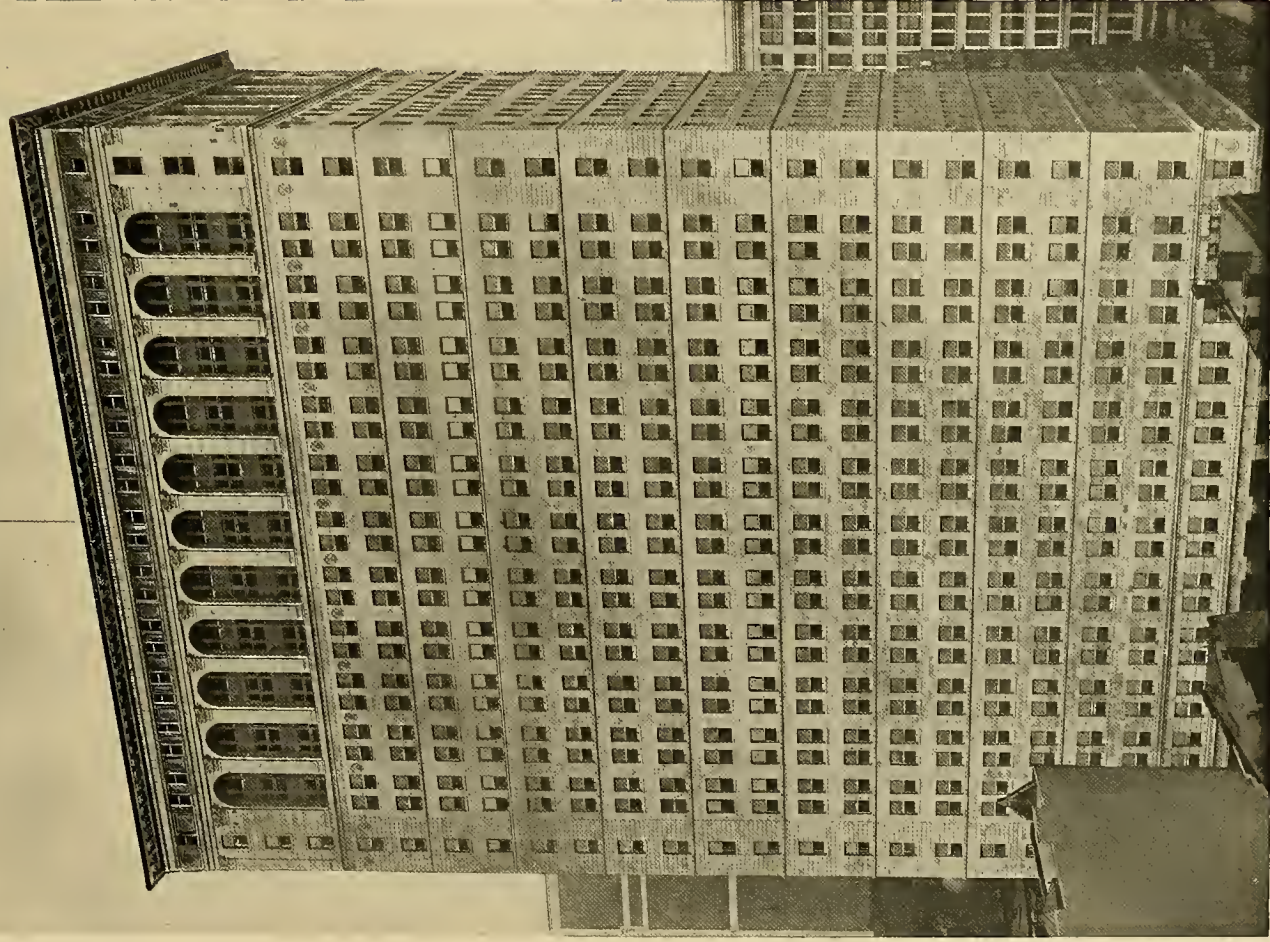
PITTSBURGH HARBOR

Showing Point Bridge and where the Allegheny and Monongahela rivers unite to form the great Ohio. The daily amount of traffic by this point is enormous. The surface of the rivers is always covered with busy steamers carrying passengers and freight or pushing squads of barges laden with coal, ore, steel rails, etc.



THE CITY HALL

This commodious building on Smithfield Street near Fifth Avenue, was dedicated May 23, 1872. It is the official home of all the business departments of the local government, and the depository of the city archives. The great clock tower rises one hundred seventy-five feet from the pavement.



OLIVER BUILDING

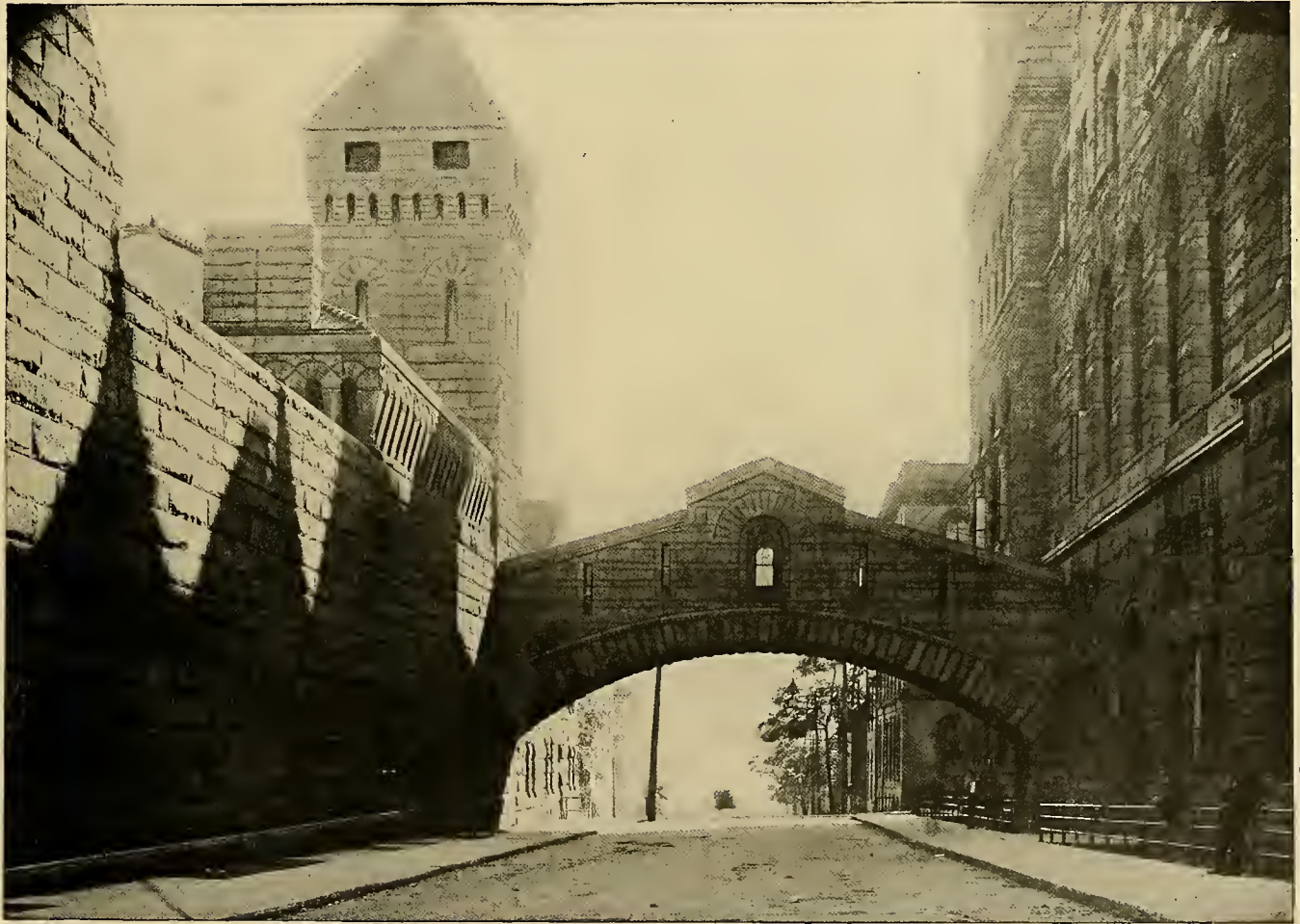
The tallest, largest and best-equipped office building in Pennsylvania.

Photo, R. W. Johnston Studios, Pittsburgh.



THE FRICK BUILDING AND COURT HOUSE

These two great buildings loom across the horizon of every view of Pittsburgh. The Frick Building, twenty stories high, located on Fifth Avenue, Grant and Diamond Streets, is an artistic and massive triumph of architecture. Opposite on Grant Street stands the magnificent Allegheny County Court House and Jail, completed April 17, 1888, at a cost of \$2,500,000.



"BRIDGE OF SIGHS" AND COUNTY JAIL

The Allegheny County Court House is connected with the County Jail by a covered passageway of stone arched over and across the street between. It is popularly known as the "Bridge of Sighs," a name suggested by its resemblance to the Venetian original. Solid walls of New England granite give a striking impression of strength to the Jail.



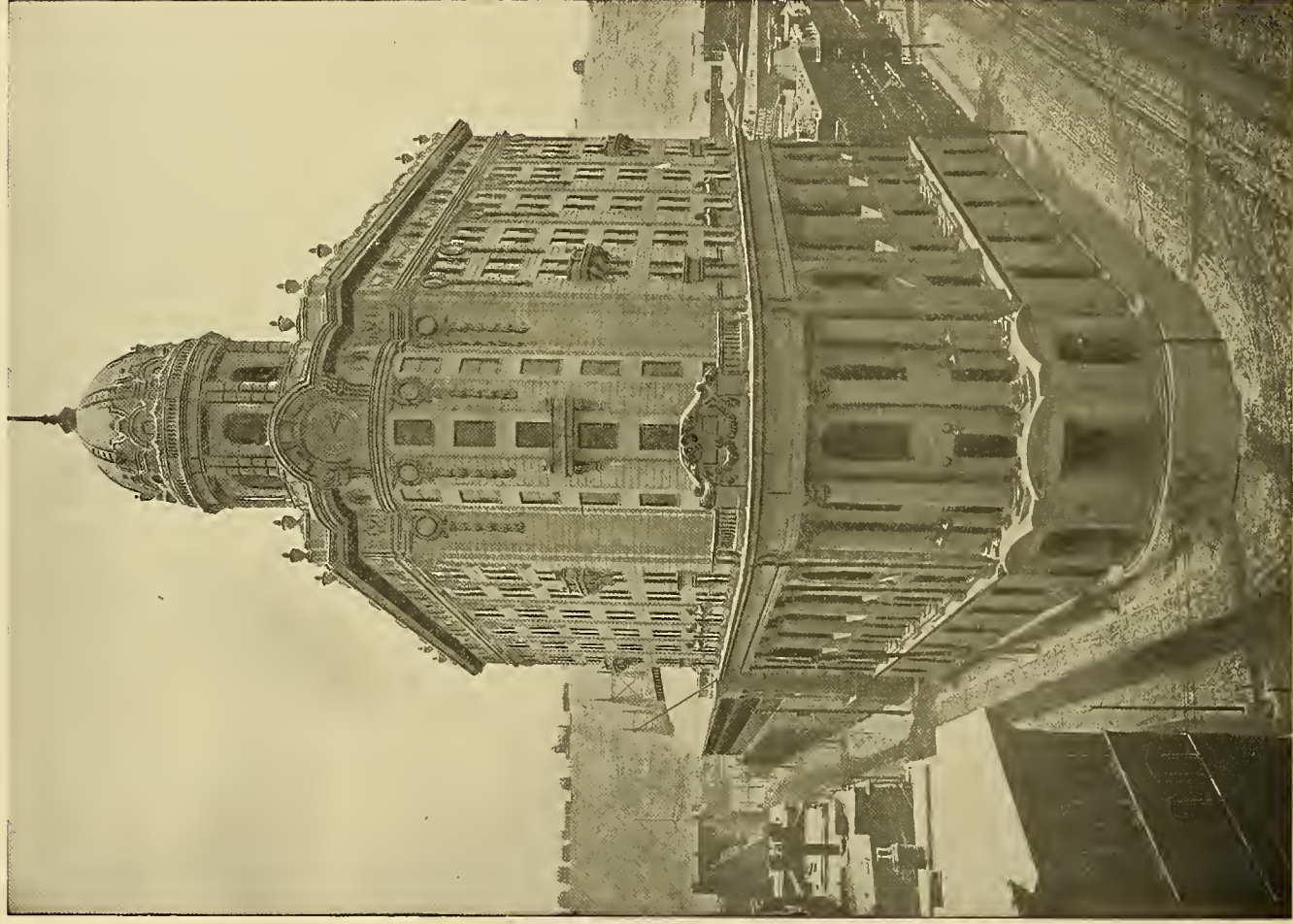
UNION STATION

This splendid edifice is one of the great railroad stations of the world. The main structure is twelve stories high. The great train shed spans nineteen tracks, upon which more than three hundred trains arrive and depart daily, transporting an average of nearly thirty thousand passengers.



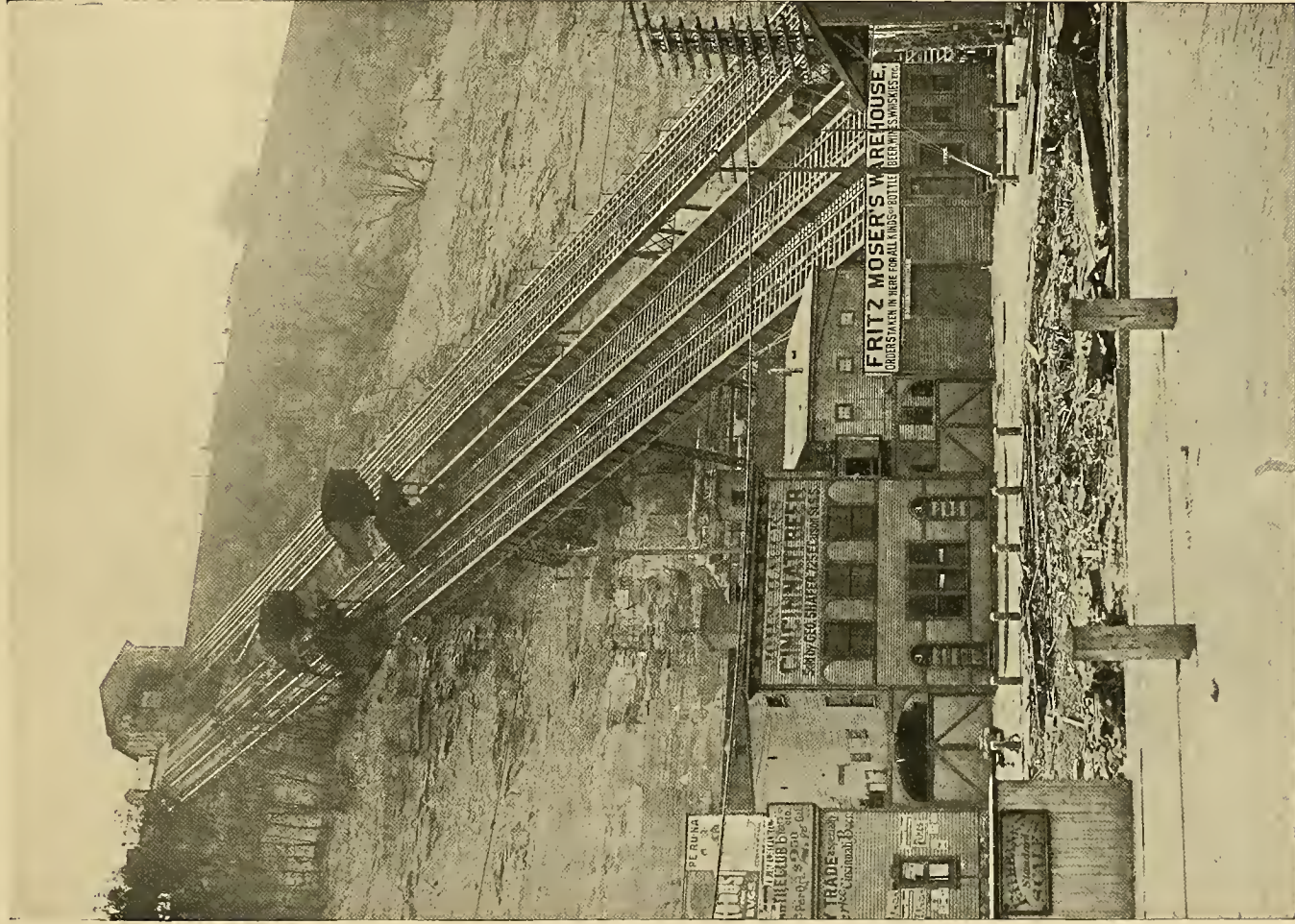
PITTSBURGH AND LAKE ERIE RAILROAD STATION, "SOUTH SIDE"

An imposing railroad terminal located on the south bank of the Monongahela at the end of Smithfield Street Bridge. The big train shed is the scene of the arrival and departure of a vast number of trains daily. It is considered one of the best-appointed stations in America.



THE WABASH TERMINAL

A thoroughly modern railroad station at Ferry, corner Liberty Street. With two great bridges and two tunnels, each several thousand feet long, it comprises the terminal facilities of the immense Wabash System, covering 15,000 miles of territory. Total cost about \$20,000,000.



MT. WASHINGTON INCLINE
Operated by a cable system. One of the interesting sights of the "South Side."



WOOD STREET LOOKING NORTH

A view which clearly indicates the metropolitan character of Pittsburgh's business architecture. The larger edifice filling the right center is the great building of the Farmers National Bank. It is worthy of note that Pittsburgh has the largest number of fine structures owned and occupied by banks than any other city in the United States.

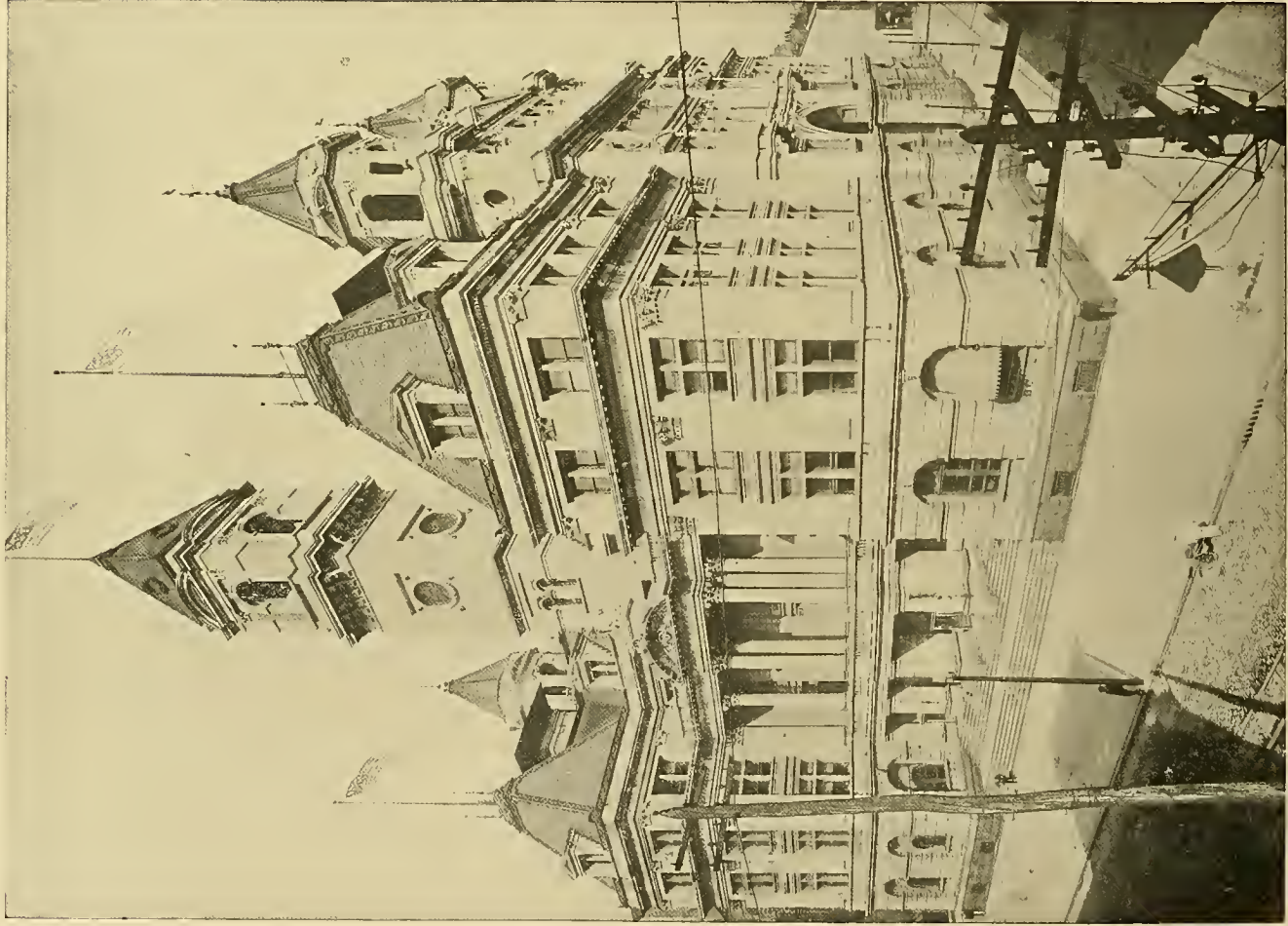


FIFTH AVENUE

Pittsburgh has four hundred and fifty miles of streets, two hundred and fifty-six of which are paved with asphalt or stone. Fifth Avenue is the principal street devoted to the retail trade. Fourth Avenue, the local Wall Street, is the center of the financial business of the city. Both avenues are lined with magnificent

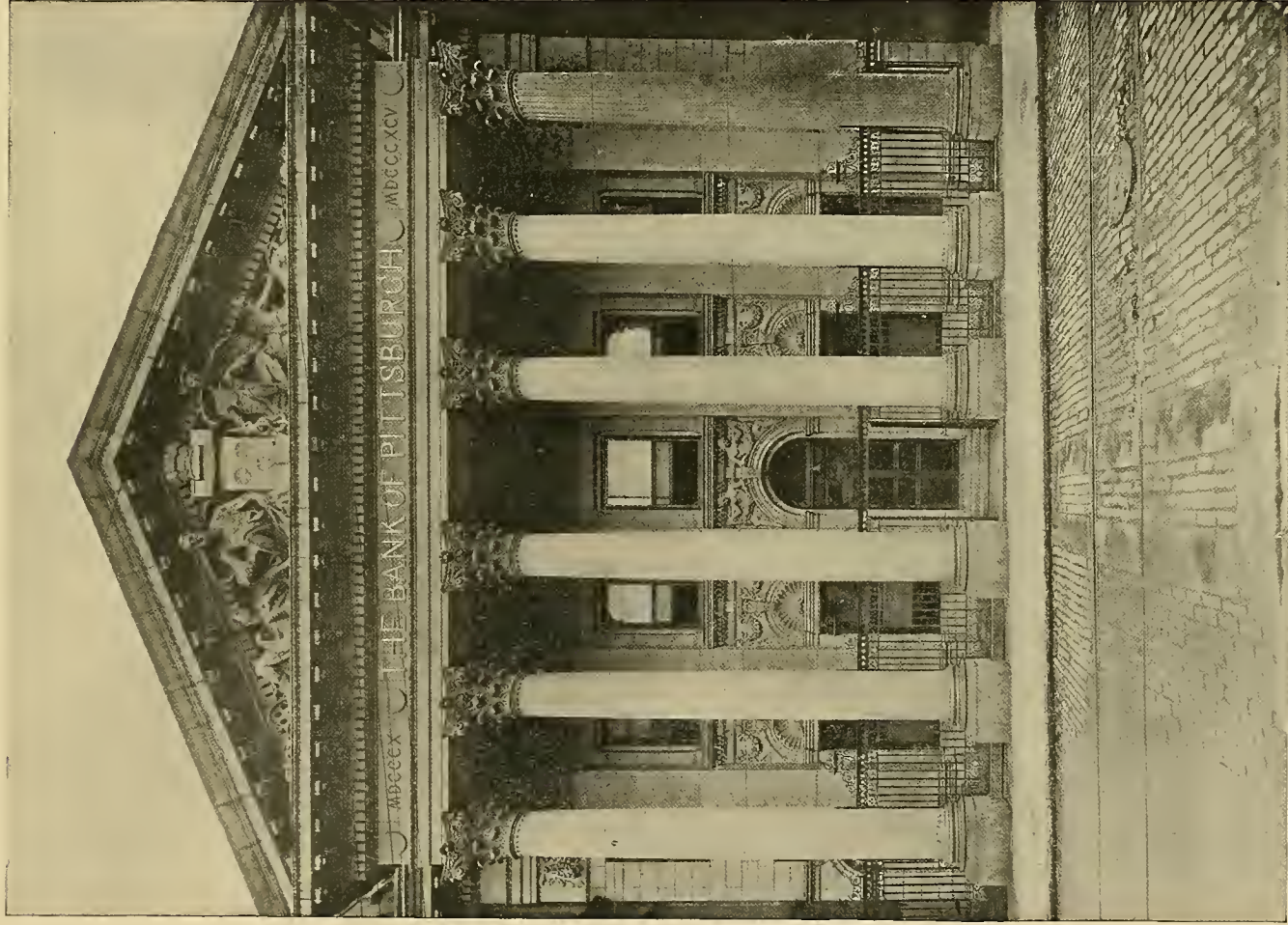


FOURTH AVENUE



POST OFFICE

This substantial building, on Smithfield Street, corner Third and Fourth Avenues, was completed in 1892 and cost \$1,700,000. The height of the main building is one hundred and four feet. The tower of the principal tower is two hundred and thirty-five feet above the street. In the amount of business transacted Pittsburgh is up among the leading post offices in the country.



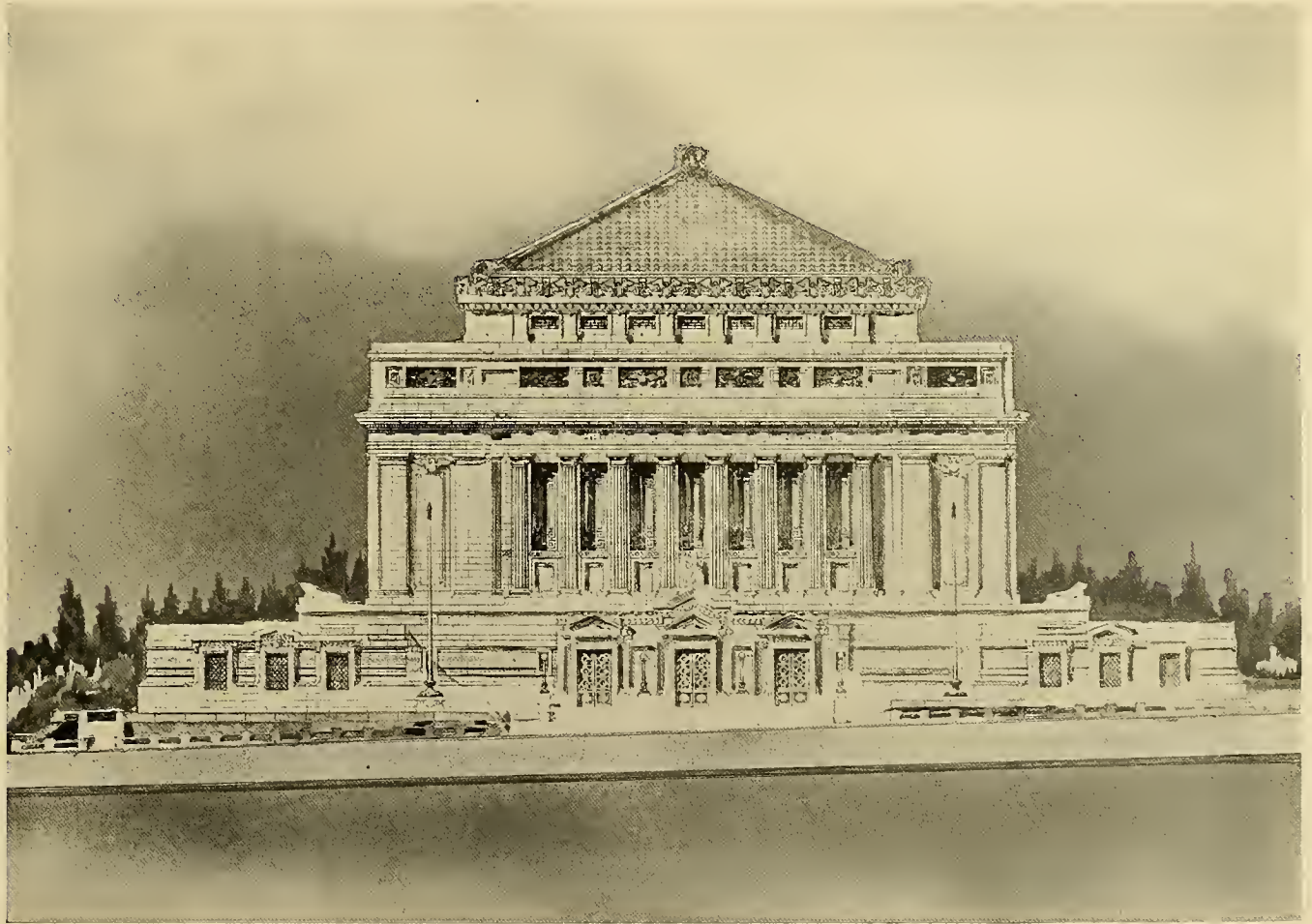
THE BANK OF PITTSBURGH

This particularly notable piece of architecture is the home of the oldest bank in Pittsburgh, organized in 1810. The Bank of Pittsburgh ranks among the solidest financial institutions of the United States. It has a capital and surplus of \$2,100,000.



THE NIXON THEATRE

Photo, R. W. Johnston Studios, Pittsburgh.



MEMORIAL HALL

Erected in honor of the soldiers and sailors of Allegheny County.

Photo, R. W. Johnston Studios, Pittsburgh.



PEOPLES SAVINGS BANK AND ARROTT BUILDINGS,
FOURTH AVENUE



GERMAN NATIONAL BANK AND DUQUESNE CLUB BUILDINGS,
SIXTH AVENUE

The three office buildings shown are particularly fine specimens of artistic skyscraping architecture. The Duquesne Club which occupies the large structure at the right was organized in 1873, and now numbers eleven hundred members. The most representative club organization in Pittsburgh.



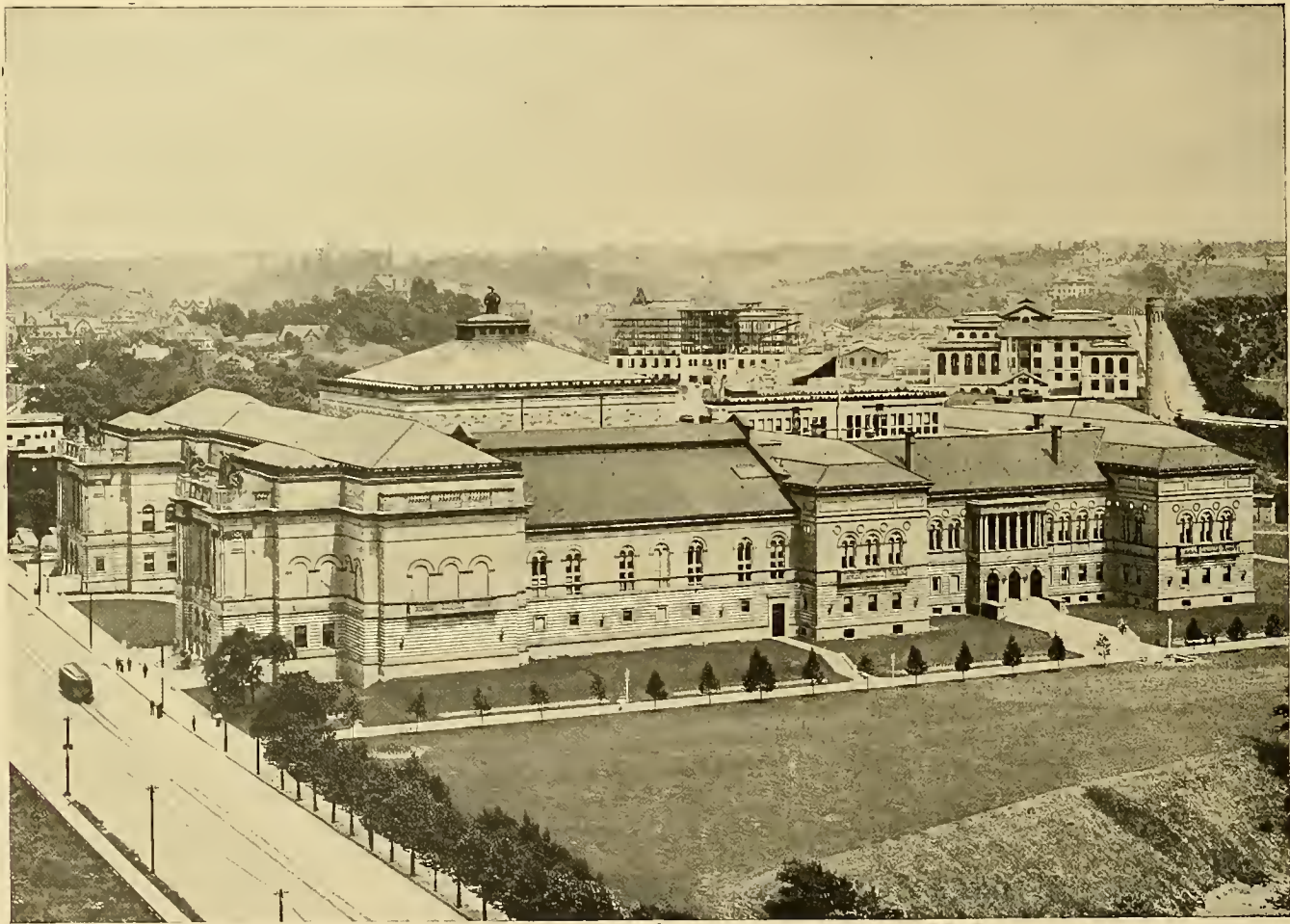
FARMERS BANK BUILDING

At Fifth Avenue and Wood Street. One of the most imposing structures in Pittsburgh. It towers twenty-four stories above the street. Built of white marble and dark pressed brick. The powerful Farmers National Bank occupies a portion of the first floor.



DIAMOND BANK BUILDING

A beautiful office building located at Fifth Avenue, Union Street and Liberty Avenue. Recently erected and occupied on the first floor by the Diamond National Bank, one of the leading financial institutions of the city. Capital, surplus and profits, \$1,775,000.



CARNEGIE INSTITUTE AND LIBRARY
Carnegie Technical School in the distance.



INTERIOR OF CARNEGIE LIBRARY

Photo, R. W. Johnston Studios, Pittsburgh.



HOTEL SCHENLEY

This splendid hotel occupies a location at Fifth Avenue and Grant Boulevard, overlooking the beautiful Schenley Park. It has been the temporary home of many distinguished visitors to Pittsburgh. The building was completed in 1898, and is thoroughly complete in every detail.



OLD BLOCK HOUSE OF FORT DUQUESNE

This relic of colonial days yet stands on Fort Street near the "Point." It is all that remains of Fort Duquesne, built by the French in 1754. The famous "Braddock's Defeat" on the banks of the Monongahela was sustained by a British army marching to capture the fort. It was finally taken in 1758 by an army of British and Colonials and its name changed to Fort Pitt. Colonel George Washington was a prominent figure in both expeditions.

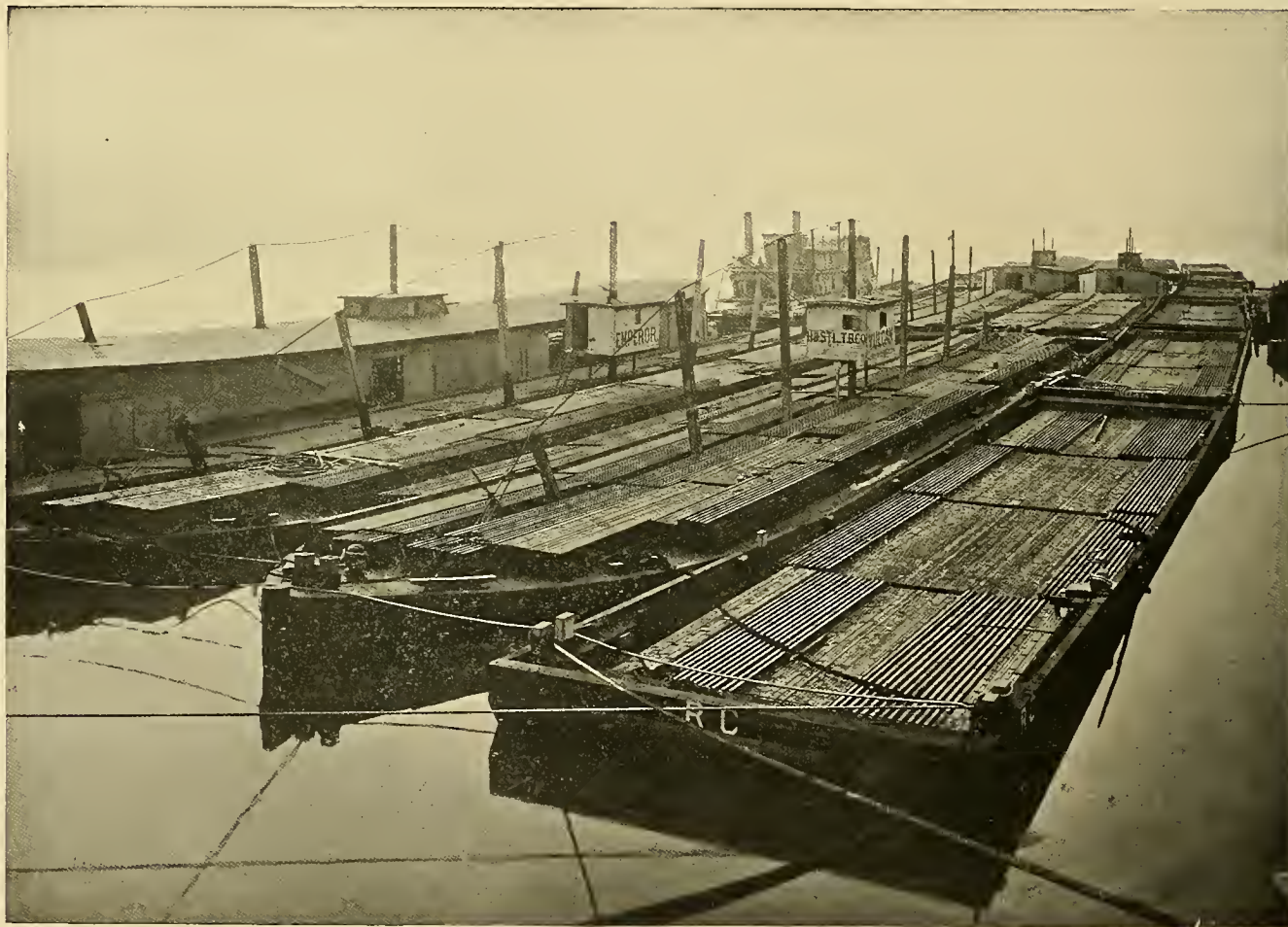


BASEBALL STADIUM AND



COPYRIGHT 1913
BY R.W. JOHNSTON-STODOL
OF PITTSBURGH

PARK, "FORBES FIELD"



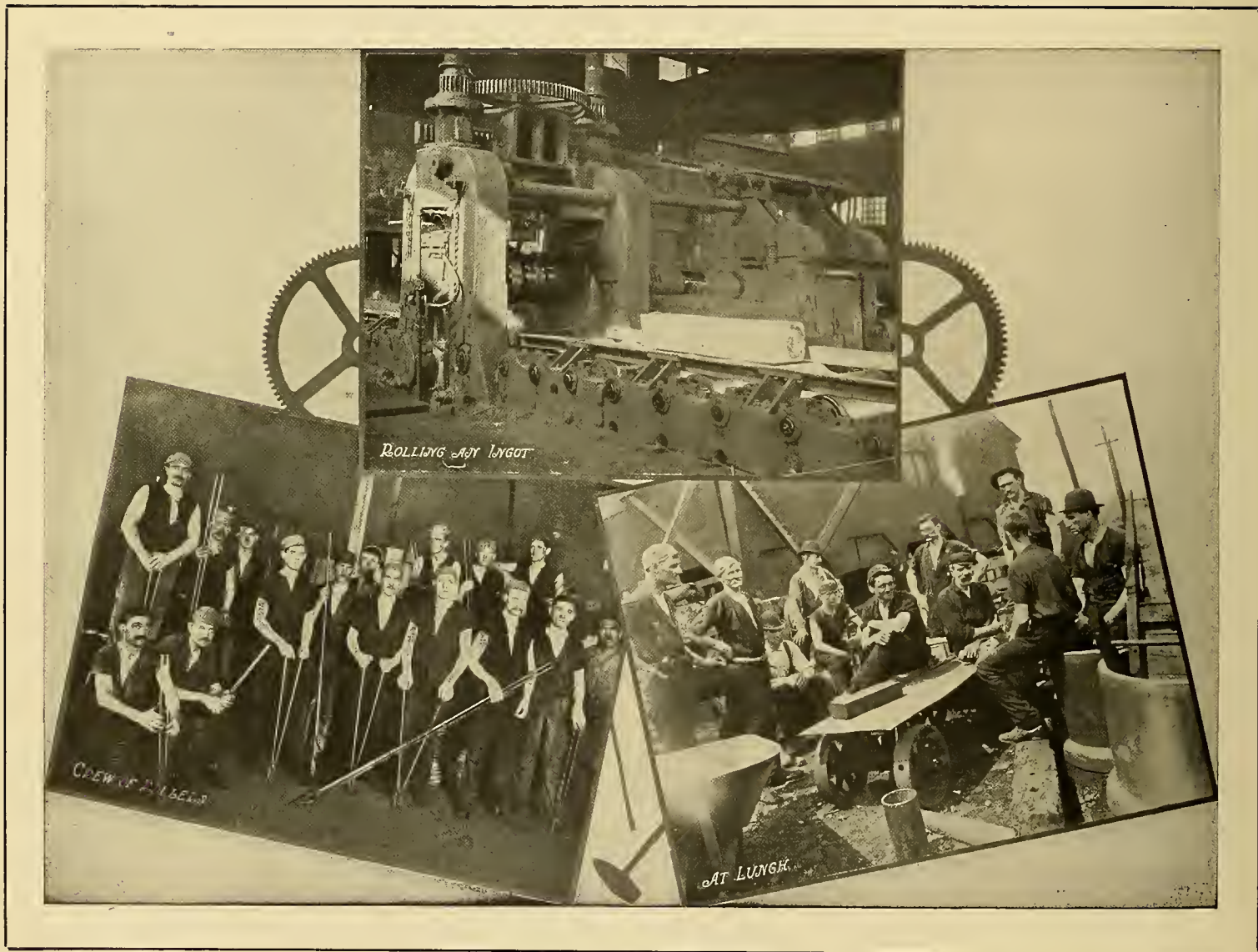
BARGES LOADED WITH STEEL RAILS

The number of barges in use about Pittsburgh for the transportation of coal and manufactured iron is enormous. Their total carrying capacity is estimated as over 2,500,000 tons. About 4,000,000 tons of steel rails and other manufactured iron are freighted in barges annually.



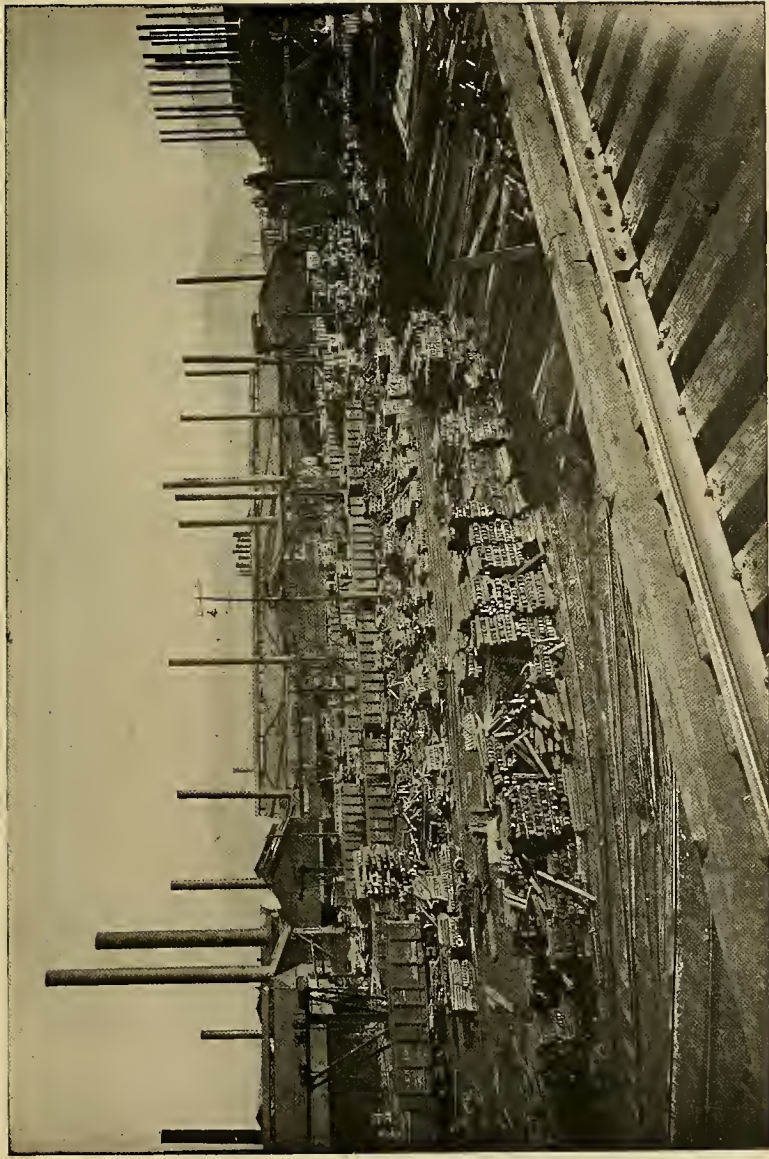
COAL BARGES ON THE OHIO

The transportation of coal is an important traffic on the rivers. A barge for carrying coal costs from \$3,000 to \$5,000 and draws six feet of water when loaded. One of the river towboats can push sixty barges holding 1,500,000 bushels. The annual amount of coal moved by water at Pittsburgh totals over 6,000,000 tons.

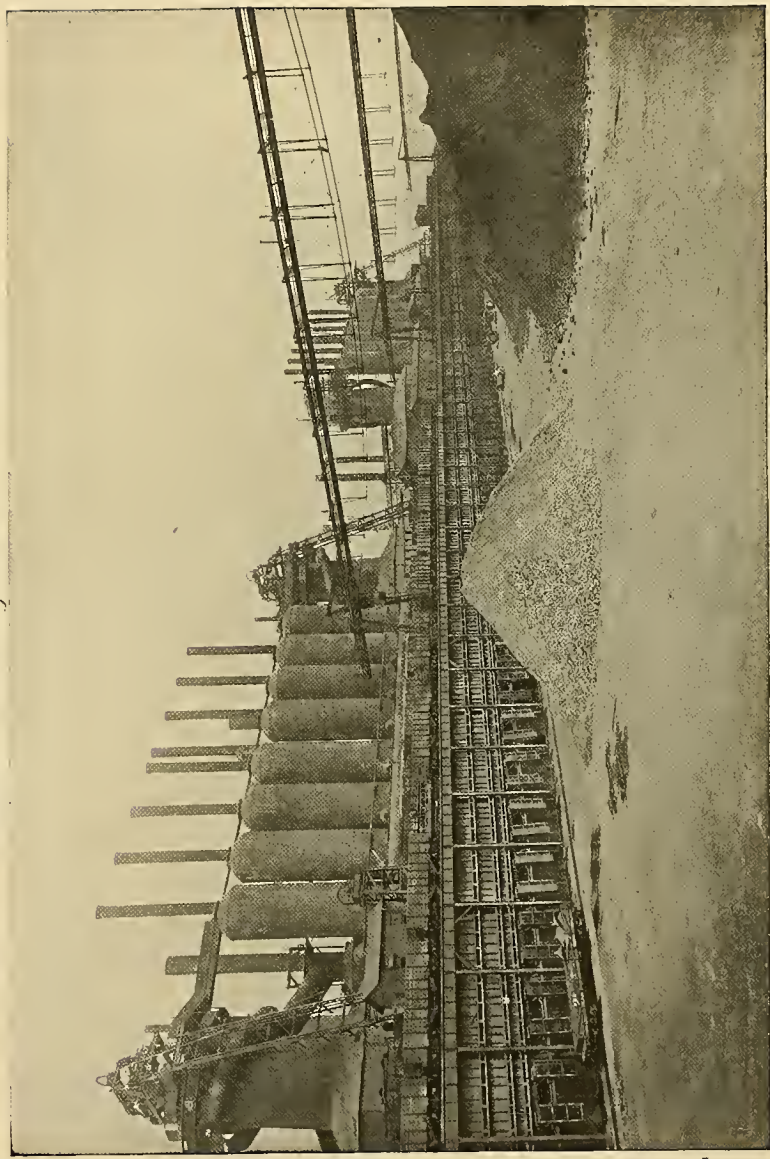


SCENES AT THE STEEL MILLS

In the great steel plants, operating day and night, are produced annually millions of tons of pig iron, steel billets, blooms, rails, rods, sheet bars, angle bars, beams, boiler, ship and armor plate, forging, etc. The skilled workmen share with the gigantic machinery in arousing the interest and admiration of a spectator.



CARNEGIE STEEL COMPANY WORKS, HOMESTEAD



DUQUESNE FURNACES, CARNEGIE STEEL COMPANY
The steel-making plants of this company have an annual capacity of nearly four million tons.



FIRST UNITED PRESBYTERIAN CHURCH, "OAKLAND"

This fine example of modern ecclesiastical architecture is situated on Fifth Avenue, Oakland. The edifice cost about \$110,000, and was dedicated in September, 1899. The church society was organized in 1801.

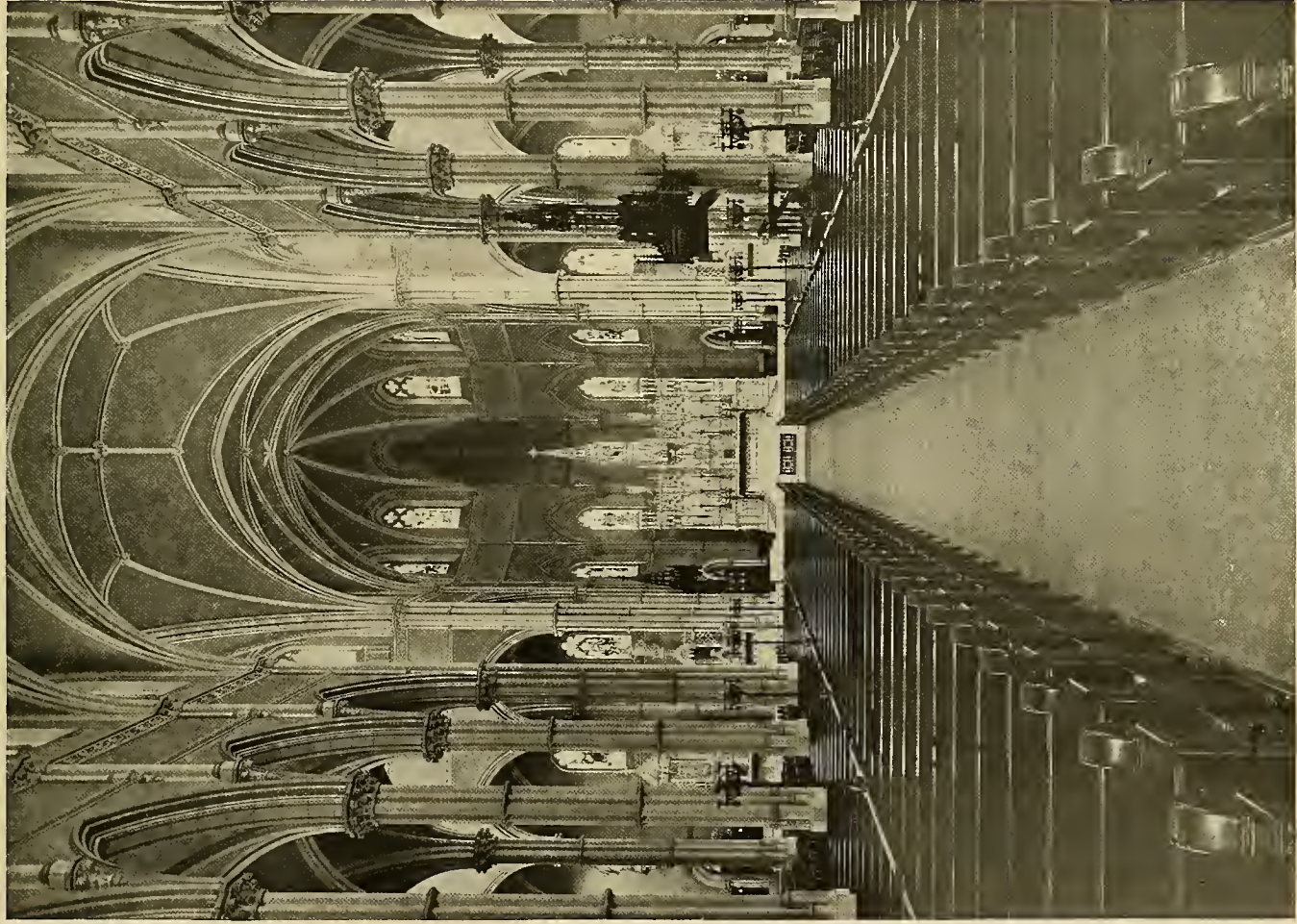


A GROUP OF TYPICAL CHURCH EDIFICES



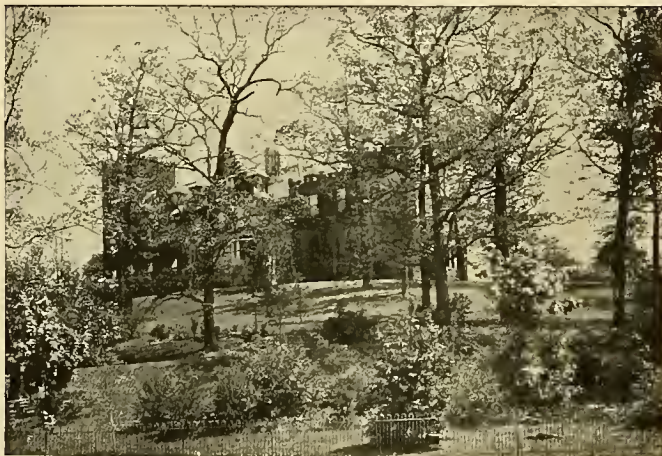
JEWISH SYNAGOGUE

Photo, R. W. Johnston Studios, Pittsburgh.



Photo, R. W. Johnston Studios, Pittsburgh.

INTERIOR OF THE CATHEDRAL



"Lyndhurst."
C. P. Lockhart Residence.

Durbin Horne's Residence.
Home of Pittsburgh Club.

A FEW OF THE BEAUTIFUL RESIDENCES OF PITTSBURGH

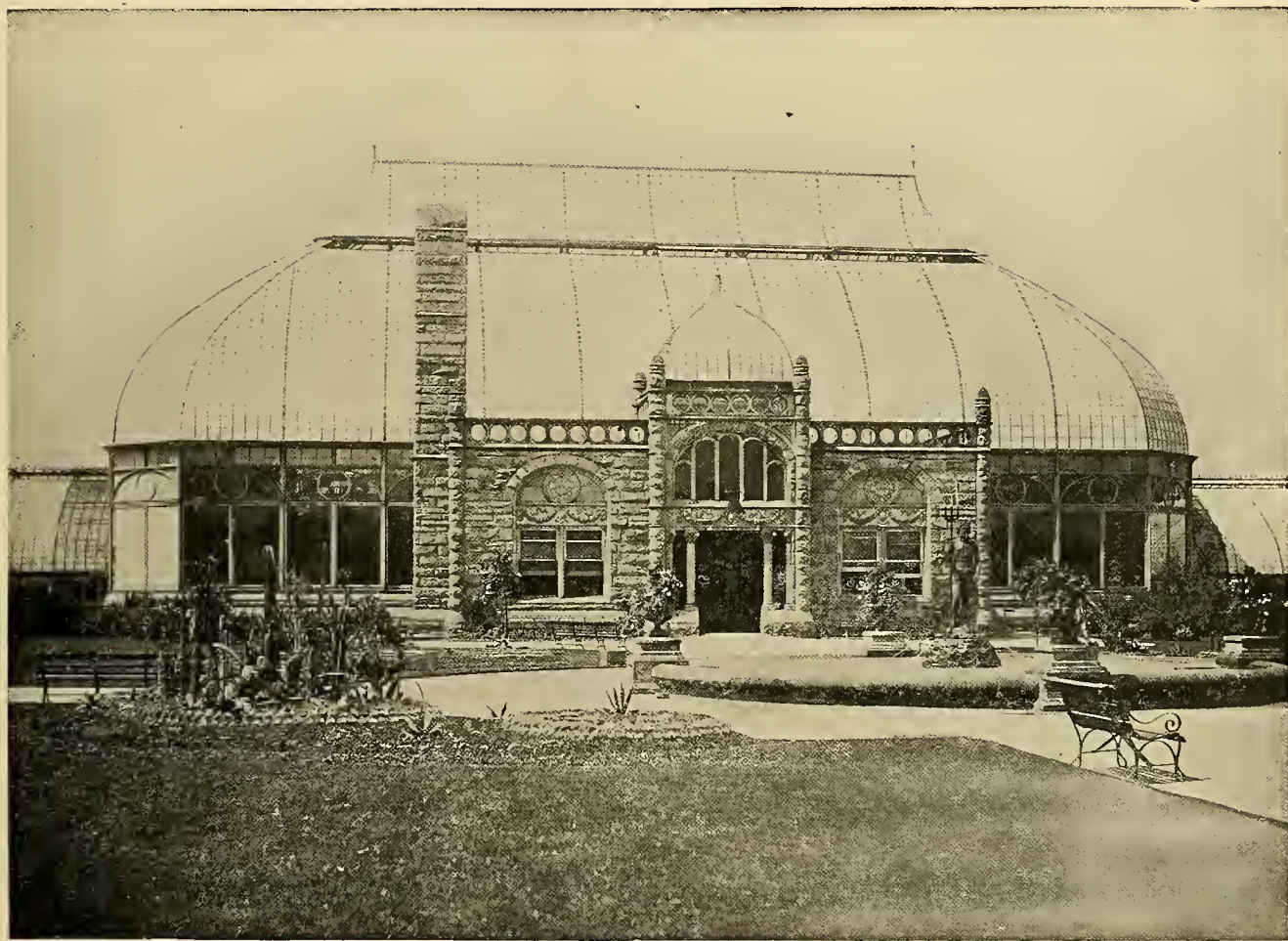


SOME WELL-KNOWN BUILDINGS OF PITTSBURGH



PANTHER HOLLOW BRIDGE, SCHENLEY PARK

A view of one of the most charming spots in Schenley Park. The simple architecture of the well-designed bridge structure harmonizes perfectly with the undisturbed natural grandeur of the surrounding scenery.



ENTRANCE TO PHIPPS CONSERVATORY, SCHENLEY PARK

The Phipps Conservatory contains a most comprehensive exhibit of plant life. It is annually visited by thousands of delighted citizens and sojourners in the city. The entrance is attractive and is in keeping with the peculiar design of the building.



ENTRANCE TO HIGHLAND PARK

Highland Park, located on the banks of the Allegheny River, includes many beauty spots of superb attractiveness. The impressive entrance is admired by all visitors. The park contains two great reservoirs, flower gardens, zoological gardens, etc.



HIGHLAND PARK ZOOLOGICAL GARDENS

The most popular attraction in Highland Park is the Zoological Gardens. Here a rare and valuable collection of birds and animals are maintained in splendid condition amid the most picturesque surroundings.



SHAKESPEARE SCHOOL

An ideal school building occupying an entire block on Shakespeare Street, East End. It was completed in 1892 and is supplied with every modern convenience to insure the comfort and protect the health of the scholars.



SIXTH STREET BRIDGE AND VIEW OF "NORTH SIDE" (ALLEGHENY)

Pittsburgh's North Side (Allegheny) is situated on the west bank of the Allegheny River, opposite Pittsburgh. Its present population is estimated at about 140,000. The two cities are connected by many costly and substantial bridges, of which the splendid structure at Sixth Street is a fine example. An immense amount of travel passes over the river daily.



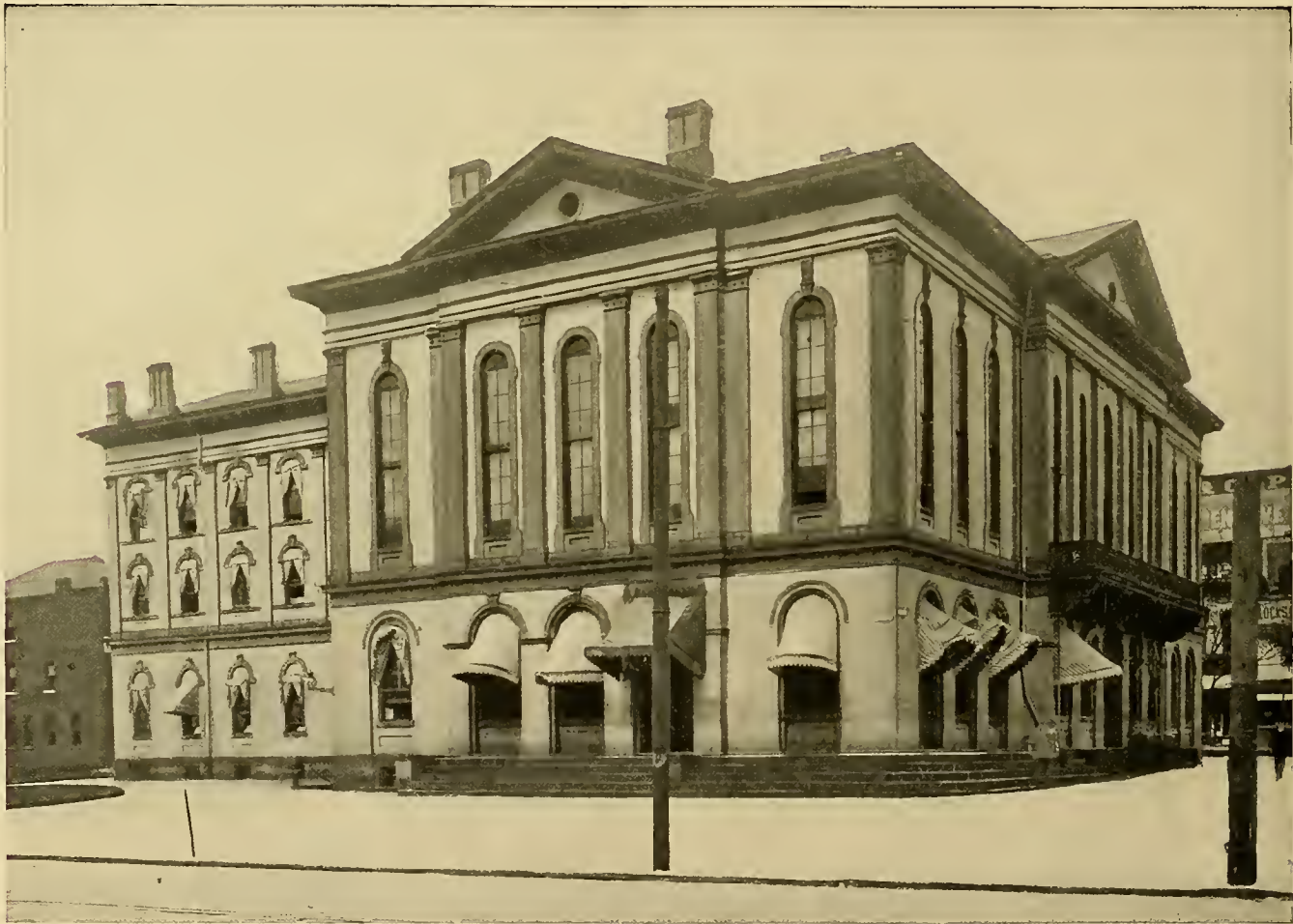
POST OFFICE, "NORTH SIDE" (ALLEGHENY)

Among the post offices of Western Pennsylvania this office ranks second only to that of Pittsburgh in the annual amount of business transacted.



CARNEGIE LIBRARY "NORTH SIDE" (ALLEGHENY)

A magnificent library building located at the corner of Federal and Ohio Streets, North Side. It was erected in 1890 at a cost of \$300,000. The music hall seats nearly fifteen hundred.



CITY HALL, "NORTH SIDE" (ALLEGHENY)
Formerly the municipal headquarters of Allegheny, but now used as North Side Police Station.



WORKMAN'S SAVINGS BANK AND TRUST COMPANY, "NORTH SIDE" (ALLEGHENY)

This fine structure of granite and brick, erected 1901, is the home of one of the most popular banking institutions of Greater Pittsburgh.



CARNEGIE LIBRARY, HOMESTEAD

Homestead, the busy industrial suburb of Pittsburgh, situated a few miles east on the opposite bank of the Monongahela, is world-renowned for its enormous steel mills. One of the most beautiful buildings in Homestead is this splendid library.

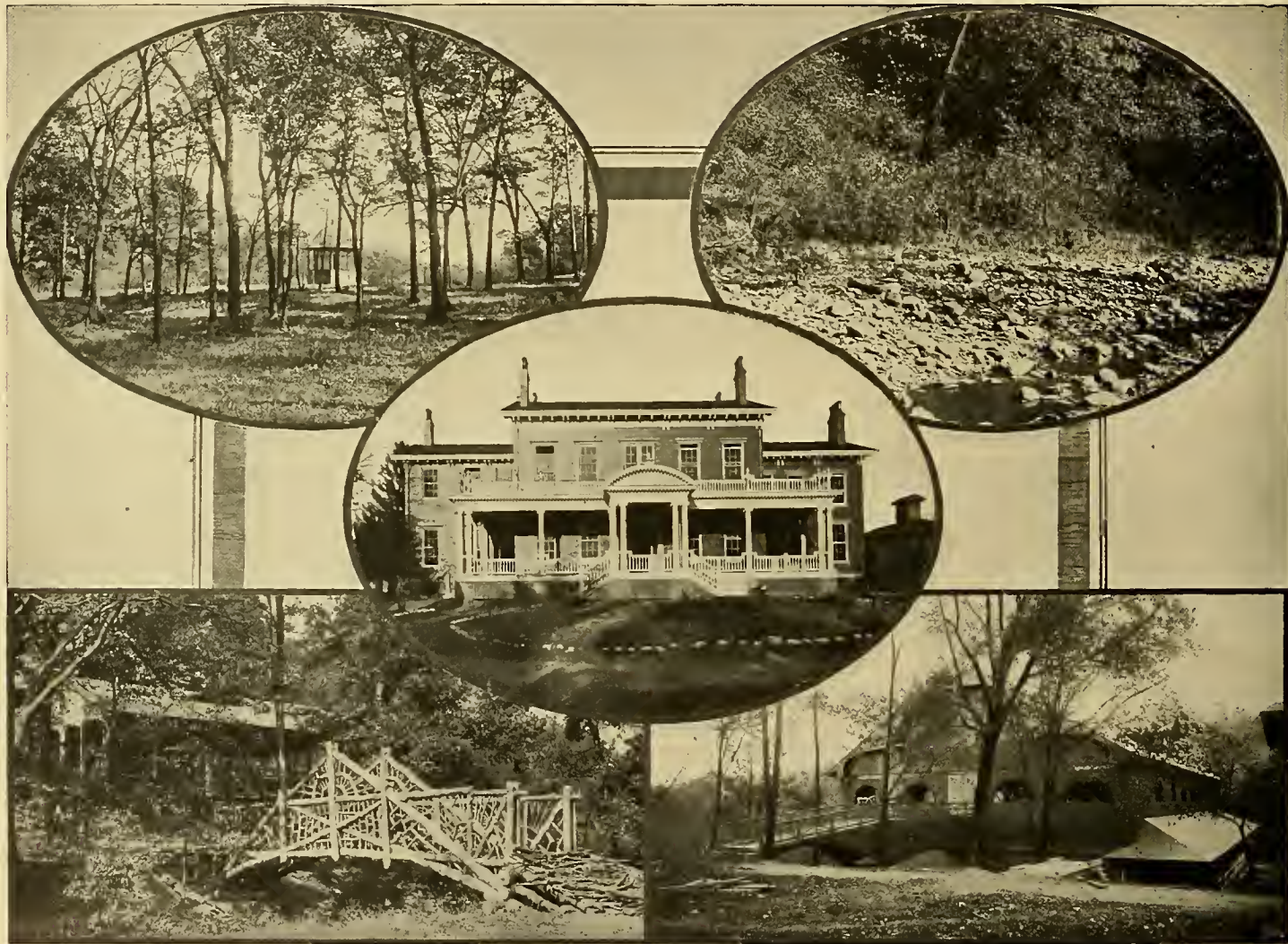


RESIDENCE OF CHARLES E. DINKEY

The homes of two of Braddock's well-known citizens. Mr. Dinkey is general manager of the Carnegie Steel Co. Mr. Dalzell is a brilliant representative of Pennsylvania in the National Congress.



RESIDENCE OF CONGRESSMAN DALZELL



SCENES IN OLYMPIA PARK, MCKEESPORT

A group of views taken in the popular recreation park of McKeesport. It is one of the most beautiful tracts of land devoted to that purpose in Western Pennsylvania.

One copy del. to Cat. Div.

JAN 26 1910







LIBRARY OF CONGRESS



0 014 313 221 3

