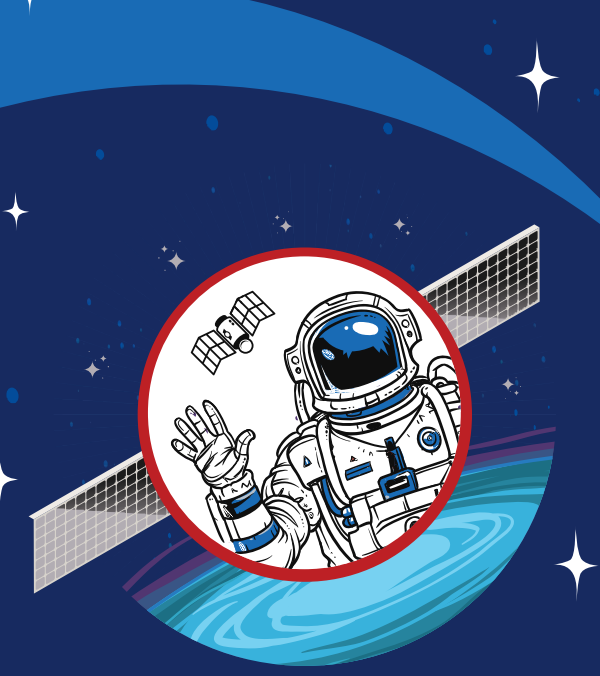




20 Continuous YEARS



20 Years on the international Space Station

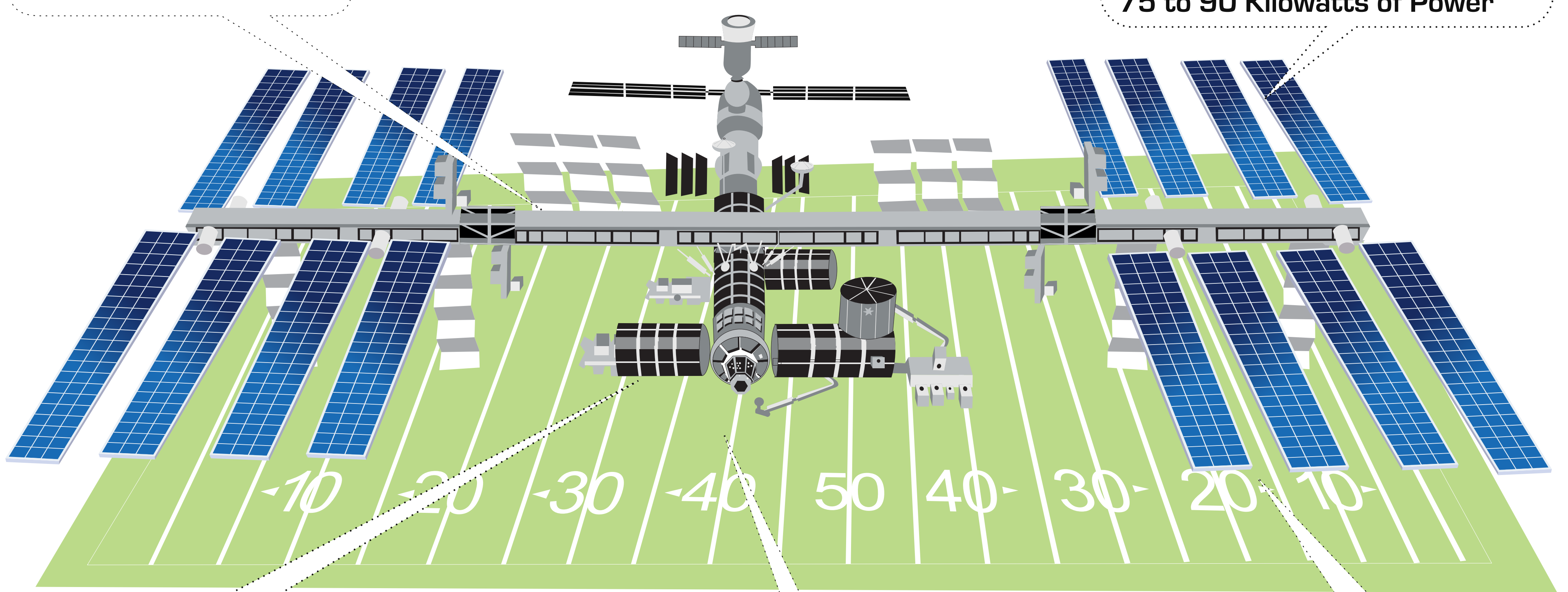
of Life on the Space Station

Celebrating the People and Scientific and Engineering Accomplishments of the International Space Station

The SPACE STATION is **357 FEET end to end**, one yard shy of the full length of an American football field including the end zones

WINGSPAN:
357 Feet (109 Meters)

POWER GENERATION:
4 Pairs of Solar Arrays Provide 75 to 90 Kilowatts of Power



HABITABLE VOLUME:
13,696 Cubic Feet (388 Cubic Meters) not including visiting vehicles

MASS:
925,335 pounds (419,725 kilograms)

SPACE STATION SPEED:
Moves at 17,500 mph (28,000 km/h)

240 INDIVIDUALS from 19 countries have visited the International Space Station.



An international crew of **6 PEOPLE** live and work while traveling at a speed of five miles per second, orbiting Earth about every **90 minutes**.

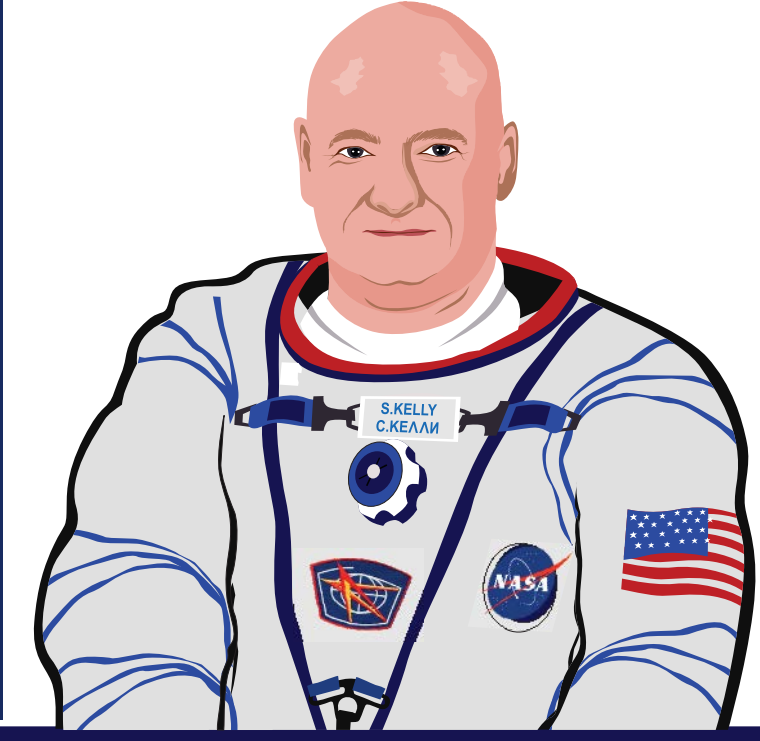
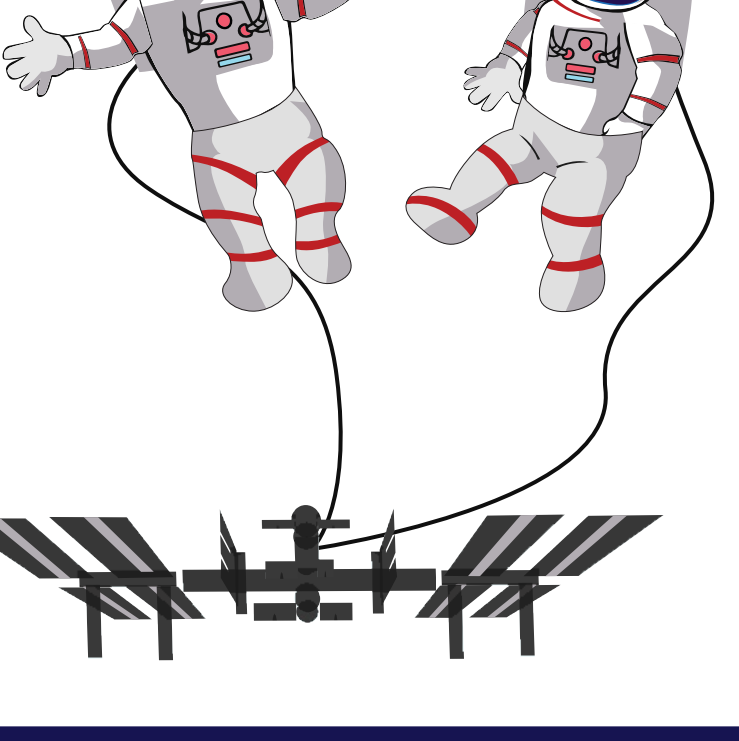
The solar arrays are (**240 FEET**) long, about the same length as the **world's largest passenger aircraft**, the Airbus A380.

The space station has an **internal pressurized volume equal to that of a Boeing 747**.

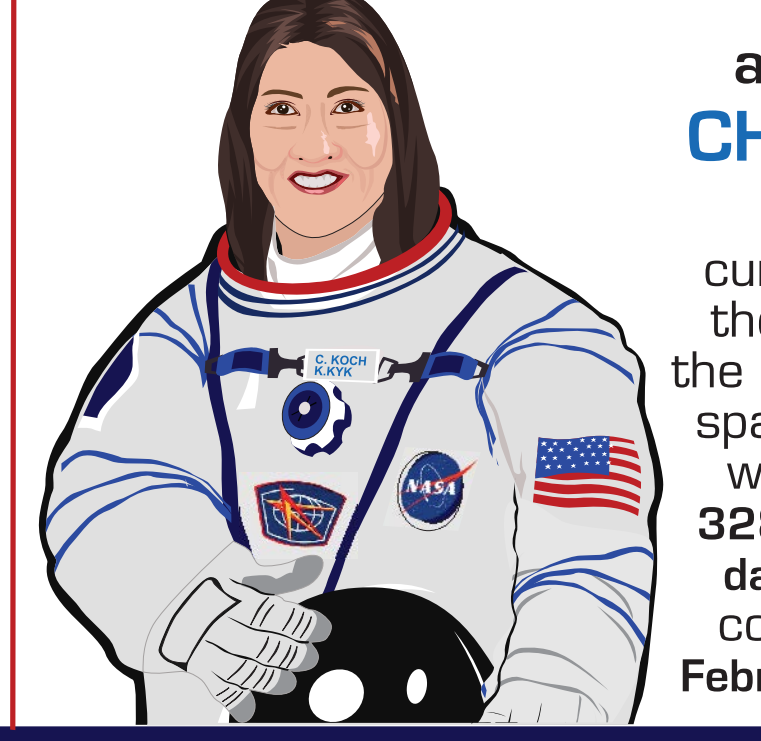
16 ORBITS SUNRISE SUNSET
In **24 hours**, the space station makes **16 orbits of Earth**, traveling through **16 sunrises and sunsets**.

20 YEARS
The space station has been continuously occupied since Nov. 2000.

Astronauts and cosmonauts have conducted more than **227 SPACEWALKS** (and counting!) for space station construction, **maintenance and upgrades since December 1998**.



NASA astronaut SCOTT KELLY currently holds the record for the longest single spaceflight by an American, with **340 consecutive days** in space completed on March 1, 2016.



NASA astronaut CHRISTINA KOCH currently holds the record for the longest single spaceflight by a woman, with **328 consecutive days** in space completed on February 6, 2020.

The station's orbital path takes it over **90 percent of the Earth's population**, with astronauts taking millions of images of the planet below. Check them out at <https://eol.jsc.nasa.gov>



8 SPACESHIPS can be connected to the **space station** at once.

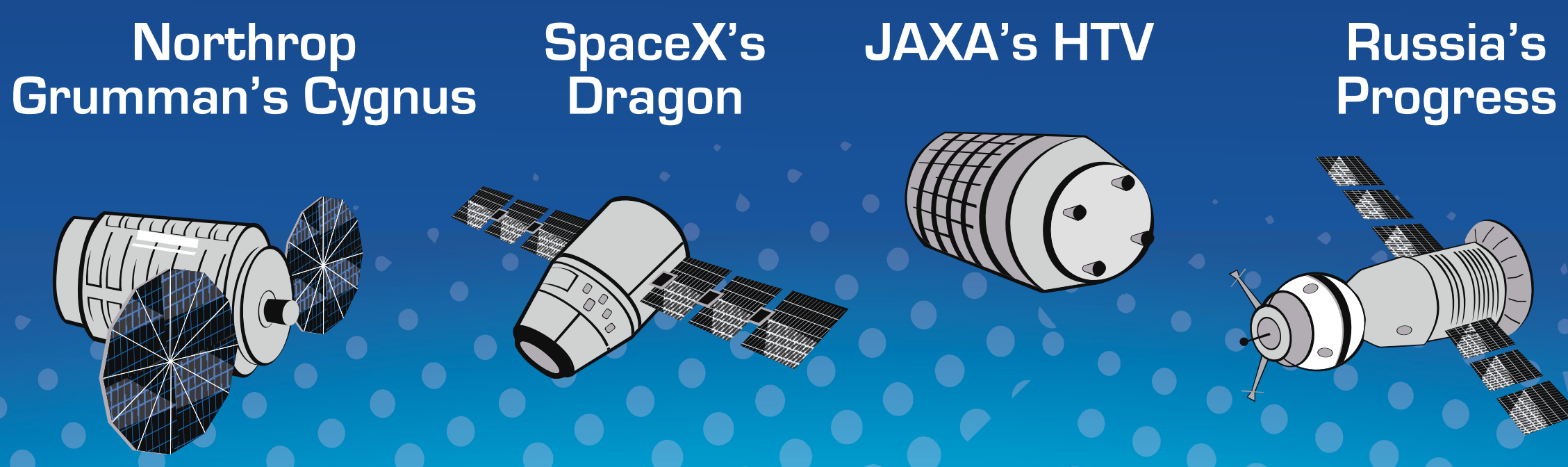
Science investigations that take place on the space station:

The Space Station has hosted almost **3,000 research investigations** from researchers in more than **100 countries** and counting. nasa.gov/iss-science

Biology & Biotechnology 	Earth & Space Science 	Educational Activities 	Human Research 	Physical Science 	Technology Development
--	--------------------------------------	-----------------------------------	---------------------------	-----------------------------	-----------------------------------

To mitigate the loss of muscle and bone mass in the human body in microgravity, the astronauts work out at least **2 HOURS A DAY**.

4 Different CARGO SPACECRAFT deliver science, cargo and supplies:



The **Water Recovery System** recycles **93%** of space station waste water.

