

C O N F I D E N T I A L

I. GENERAL.

(a) Unit Reporting VC-87 (b) Based on or at USS MARCUS ISLAND (CVE-77)
 (d) Take off: Date 28 March 1945 Time (LZT) 1000 I (Zone); Lat 25-32N ; Long 127-28E
 (e) Mission Direct Support (f) Time of Return 1345 I (ZONE)

II. OWN AIRCRAFT OFFICIALLY COVERED BY THIS REPORT.

Type	Squad.	Number			Bombs and Torpedoes	Fuze, Setting
(a)	(b)	Taking Off	Engaging Enemy A/C	Attacking Target	Carried (per plane)	(g)
		(c)	(d)	(e)	(f)	
TBM-3	VC-87	4	-	4	4 x 500 lb. G.P.	Inst.nose;.01 delay tail
TBM-3	VC-87	4	-	4	10 x 100 lb. G.P. 8 x 5" H.E. Rockets	Inst. nose & tail. Non-delay base.

III. OTHER U.S. OR ALLIED AIRCRAFT EMPLOYED IN THIS OPERATION

Type	Squad.	Number	Base	Type	Squad.	Number	Base
FM-2	VC-	11	USS SARGENT BAY(CVE-83)				

IV. ENEMY AIRCRAFT OBSERVED OR ENGAGED (By Own Aircraft Listed in II Only).

None.

V. ENEMY AIRCRAFT DESTROYED OR DAMAGED IN AIR (By Own Aircraft Listed in II Only).

None.

C-O-N-F-I-D-E-N-T-I-A-L

VI. LOSS OR DAMAGE, COMBAT OR OPERATIONAL, OF OWN AIRCRAFT (of those listed in II Only).

None.

VII. PERSONNEL CASUALTIES (in aircraft listed in II only; identify with planes listed in VI by Nos. at left).

None.

VIII. RANGE, FUEL, AND AMMUNITION DATA FOR PLANES RETURNING

(a) Type A/C	(b) Miles Out	(c) Miles Return	(d) Av. Hours in Air	(e) Av. Fuel Loaded	(f) Av. Fuel Consumed	(g) Total Ammo. Expended		(h) No. of Planes Returning		
						.30	.50		20MM	MM
TBM-3	55	55	3.75	330	188	40	240	-	-	8

IX. ENEMY ANTI-AIRCRAFT ENCOUNTERED (Check one block on each line).

Caliber	None	Meager	Moderate	Intense
HEAVY - Time-fused shells, 75mm and over	X			
MEDIUM - Impact-fused shells, 20mm-50mm	X			
LIGHT - Machine gun bullets, 6.5mm-13.2mm	X			

X. COMPARATIVE PERFORMANCE, OWN AND ENEMY AIRCRAFT (use check list at left).

C-O-N-F-I-D-E-N-T-I-A-L

XI. ATTACK ON ENEMY SHIPS OR GROUND OBJECTIVES (By Own Aircraft Listed in II Only).

Defense installations on hill 3000

(a) Target(s) and Location(s) yds. east of YONFAN AIRFIELD, OKINAWA (b) Time Over

Target(s) 1130-1240 I (Zone)

(c) Clouds Over Target Variable from 1000-2000 feet, cumulus, .9 cover.

(d) Visibility of Target Clear under overcast (e) Visibility 12-15 miles

(f) Bombing Tactics: Type Modified Glide Bomb Sight Used _____ Bombs

Dropped Per Run Varied Spacing 25 feet Altitude of Bomb Release 1500 feet

(g) No. Enemy Aircraft hit on Ground: Destroyed None Probably Destroyed None

Damaged None

(h) _____ (i) _____ (j) _____ (k) _____ (l) _____ (m) _____ (n) _____ (o) _____

(p) Were Photographs Taken? Yes Photographs of Damage, When Taken, Should
be Attached By Staple.

C-O-N-F-I-D-E-N-T-I-A-L

XII. TACTICAL AND OPERATIONAL DATA. (Narrative and comment. Describe action fully and comment freely, following applicable items in check list at left. Use additional sheets if necessary.)

Operating under unfavorable weather conditions, bombing and rocket attacks were made on defense installations on the southern and western slopes of hill east of YONTAN AIRFIELD, OKINAWA ISLAND. Targets included numerous empty gun emplacements, revetments, trenches and possible underground stowage areas. Due to the low overcast into which planes pulled up after bombing runs, it was impossible to assess damage accomplished to the installations which commanded YONTAN and KATENA AIRFIELDS and the western beaches. Two torpedo planes bombed barracks and highway intersection at DAKUSHAKU TOWN, OKINAWA.

Pilots and Aircrewmembers participating in this mission were:

Lt. Cdr. H. N. HEISEL	D. E. FINN, AMM3c
Lieut. J. W. LORCH	D. M. SUTHERLAND, ARM3c
Lt.(jg) V. H. LEINICKE	B. FARNELL, ARMLc
Lt.(jg) J. E. COUSINS	T. R. HALL, AOM1c
Lt.(jg) R. L. KOUNS	J. D. SHUFELT, AM2c
Lt.(jg) K. "B" KNOX	C. M. McLAUGHLIN, ARM2c
Ensign M. E. WORTMAN	N. F. WILLIS, ARM3c
Ensign W. J. SAUNDERS	W. A. GRITZNER, AOM2c
	J. A. KOCHANEK, AMMLc
	J. P. GORDON, ARMLc
	F. L. PUCCI, AMMLc
	L. E. ADAIR, ARM3c
	P. E. COOK, AMM3c
	J. T. SZPONT, ARM3c
	H. R. PILKENTON, AMM3c
	J. B. COOK, ARM3c

C O N F I D E N T I A L

XIII. MATERIAL DATA. (Comment freely on performance or suitability, following check list at left. Use additional sheets if necessary).

No comment.

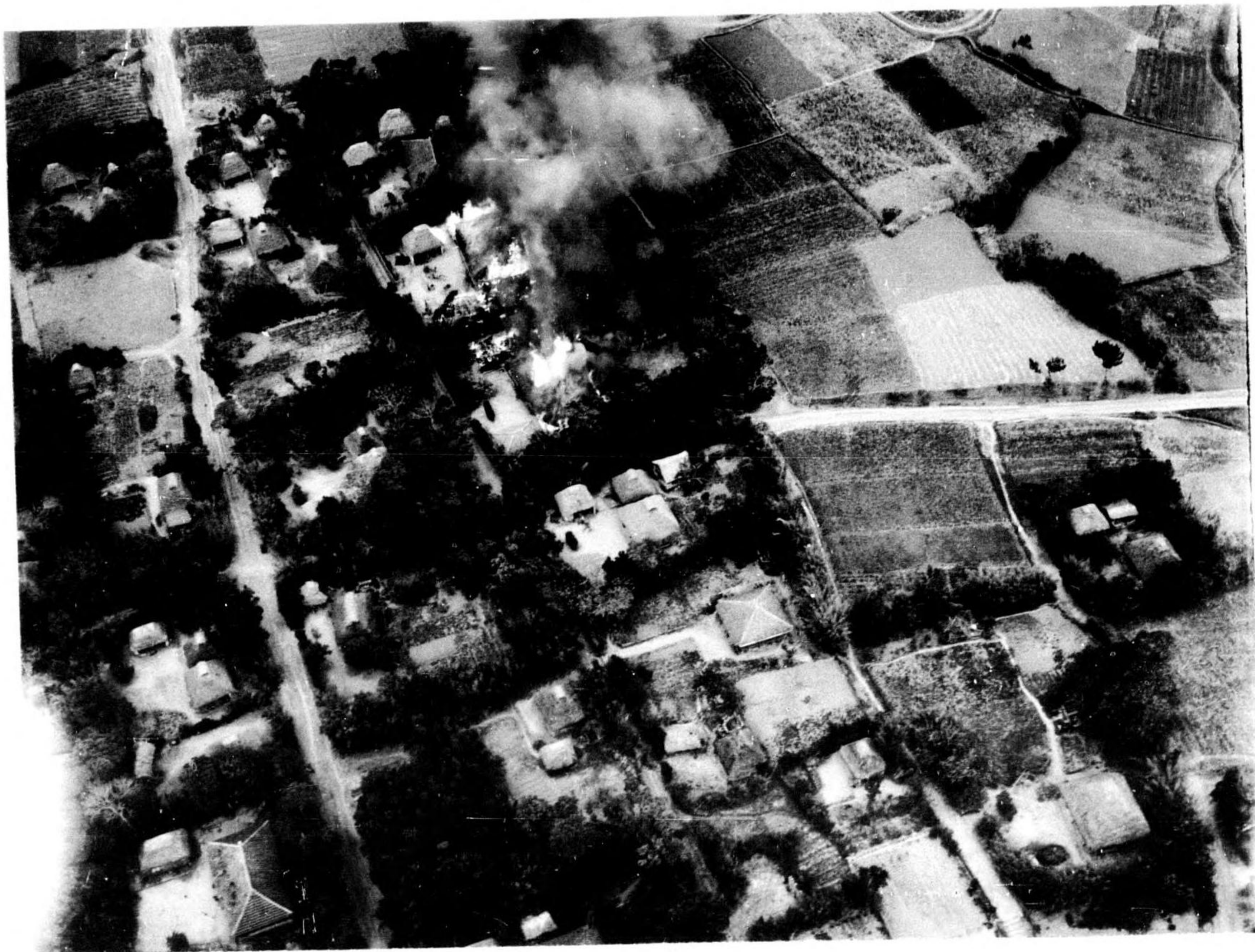
Report Prepared By:

Approved By:

R. E. JOHNSON, Lieutenant, USNR.
ACI Officer

H. N. HEISSEL, Lt.Cdr., USN.
Squadron Commander

3-29-45.
Date



Results of Direct Support attack on the village of Dakushaku ,one mile East of Kadena Airfield, 28 March 1945.

