

BLM LIBRARY



88070743

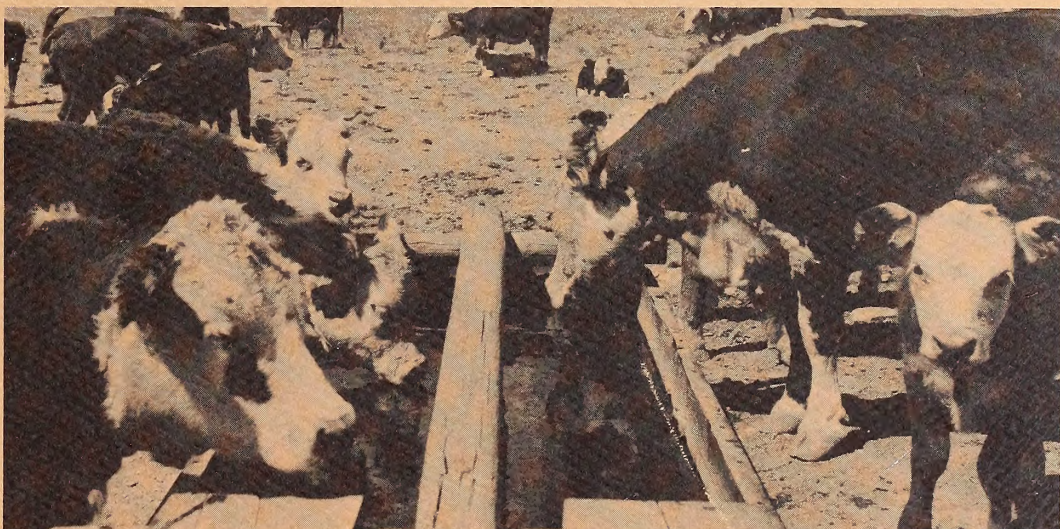


U.S. DEPARTMENT OF THE INTERIOR  
Bureau of Land Management

Vale District Office  
100 Oregon Street  
P.O. Box 700  
Vale, Oregon 97814



# Southern Malheur Rangeland Program Summary (RPS)



SF  
85.35  
.07  
S6  
1984

January 1984





# United States Department of the Interior

BUREAU OF LAND MANAGEMENT

VALE DISTRICT OFFICE  
P.O. Box 700 (100 Oregon Street)  
Vale, Oregon 97918

The Southern and Northern Malheur Rangeland Program Summary (RPS) and Record of Decision is enclosed for your review. This document is the culmination of a planning and environmental process which started in late 1980. The area encompassed by the RPS involves approximately 4 million acres of public lands in the Vale District.

This document contains grazing decisions to be implemented in the majority of allotments in the RPS area. In some instances consultation with affected livestock operators is still continuing. Decisions regarding livestock grazing in these allotments will be made once the consultation process has been completed. These decisions, as well as progress made in those allotments where grazing management and project development have been implemented, will be discussed in future RPS updates which will be published periodically.

Release of this document serves as public notice of the proposed range management program. You have thirty days in which to provide us comments if you feel that you have been adversely affected by any of the decisions contained herein. If you wish to protest or appeal a decision, you must notify the Vale BLM District Manager in writing before the comment period closes indicating which allotment decision(s) you are adversely affected by.

Your interest and involvement in the planning and environmental process is appreciated and we look forward to your continued review of future RPS documents as they become available. Please feel free to contact us if you have any questions regarding this RPS.

Sincerely yours,

District Manager  
Fearl M. Parker



#16696220

ID 88070743

SF  
185.35  
.07  
56  
1984

# Decision

I recommend adoption of the Preferred Alternative (Alternative 3) of the Southern Malheur Grazing Management Final Environmental Impact Statement of September, 1983 with the following modifications:

- 652 AUMS less allocation to livestock, as shown in Table 3.
- Adjustments in livestock use will be made only when and to the extent, estimated forage production is greater or less than 10 percent of current active preference.
- Changes in proposed range improvement projects as shown in Table 4 of this RPS.
- Minor Grazing System Changes. Approved grazing systems are listed in Appendix 2.

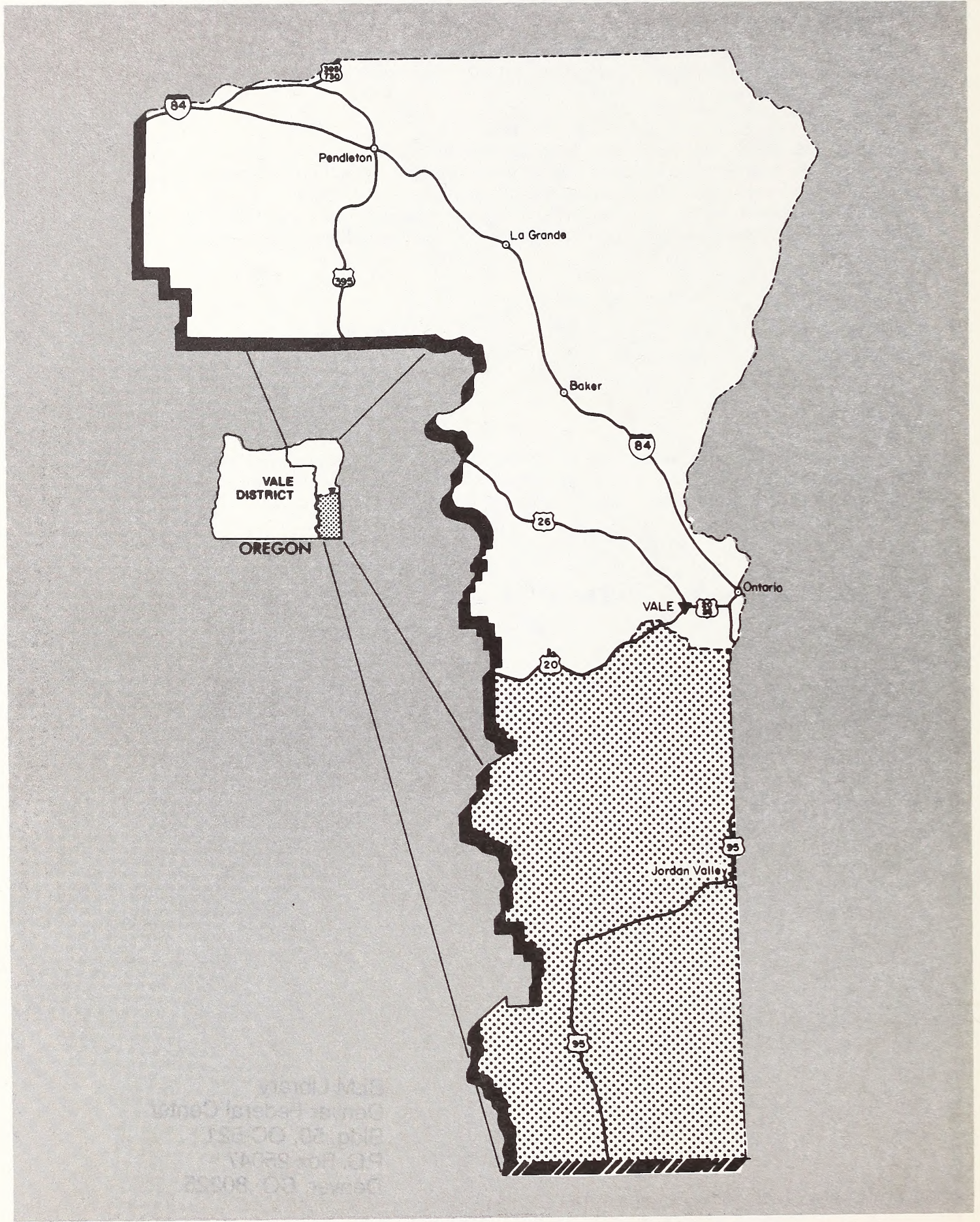
Signed: Earl M Parker Date: \_\_\_\_\_  
 District Manager, Vale

I approve the Grazing Management Plan and the underlying MFP decisions as recommended. Formal protests to this plan submitted in accordance with Bureau planning regulations (43 CFR 1610.5-2) will be considered timely until February 6, 1983.

Signed: William D Jewell Date: \_\_\_\_\_  
 State Director, Oregon

BLM Library  
 Denver Federal Center  
 Bldg. 50, OC-521  
 P.O. Box 25047  
 Denver, CO 80225





**VICINITY MAP**  
**SOUTHERN MALHEUR EIS**



## Introduction

### Purpose

This document summarizes the Bureau of Land Management's range management program in the Vale District. The Rangeland Program Summary (RPS) is based on the Southern Malheur Grazing Environmental Impact Statement (EIS). The RPS constitutes the proposed record of decision on grazing management in the EIS area. The proposed program consists of five parts:

- The allocation of forage for livestock, wildlife and wild horses,
- The grazing systems to be implemented,
- The categorization of allotments for selective management,
- The range improvements to be constructed,
- The monitoring and evaluation program to be conducted.

The RPS also describes how the initial and subsequent grazing adjustments will be made in order to implement the grazing management program.

The grazing management decision to be implemented is, with modifications, the Preferred Alternative described in the Southern Malheur Draft EIS. These modifications are described in this RPS. Refer to the EIS for detailed descriptions of livestock grazing management and ecological conditions.

### Land Use Planning Objectives

The following objectives for grazing management of public lands within the Southern Malheur EIS area resulted from land use planning completed in March, 1983:

- Improve ecological condition and increase forage production through the development and implementation of economically feasible grazing systems and range improvements. Allocate available forage between competing uses.
- Use prescribed fire (both natural and controlled burning) as a preferred vegetation manipulation method.
- Maintain or improve riparian vegetative condition by restricting or excluding livestock use (period and/or numbers) in all important riparian zones along perennial streams, lakes and reservoirs.

Decisions relating to the above grazing management objectives were deferred in the land use plan until the grazing management EIS was completed. The Southern Malheur Grazing

Management EIS has since been finalized. The findings of that EIS coupled with public comment received and subsequent economic analyses have been the basis for the decisions contained in this document.

### Background

The Vale District administers the grazing on nearly 4 million acres of public land within the Southern Malheur EIS area. There are an additional 126,919 acres of public land administered by other federal agencies, approximately 238,595 acres of State land and about 484,000 acres of private land within the EIS area. The district public rangelands are divided into 53 allotments (Figure 1-1).

During 1981 there were 120 permittees with 320,346 AUMs of active preference, however, only 309,103 AUMs were actually sold. Range improvement projects completed prior to 1981 include 333,568 acres of seedings, 210,919 acres of brush control, 2,087 miles of fencing, 147 cattleguards, 477 miles of pipeline, 690 reservoirs or water catchments, 295 spring developments, 31 wells and 11 guzzlers.

The present trend data are shown on Table 1.

Wildlife habitats of special concern consist of approximately 163,000 acres of crucial deer winter range; about 600,000 acres of winter antelope range; nearly 100,000 acres of sage grouse nesting habitats; 2,814 acres of stream riparian habitat; 155 acres of lake and reservoir riparian habitat; and 253 stream miles of fish habitat.

The American peregrine falcon is classified as endangered and the bald eagle is classified as threatened in Oregon under the Endangered Species Act of 1973. Although both species migrate through the EIS area, observations are rare and no active nests have been found. Bald eagles are attracted to areas where wintering waterfowl concentrate. The western snowy plover and kit fox, which are classified as threatened by the Oregon Department of Fish and Wildlife, are known to occur in the EIS area. Of special concern is the Whitehorse cutthroat trout which is a District sensitive species. This species is particularly adapted to the harsh desert environment found in the Trout Creek Mountains of Southern Malheur County.

### What the Rangeland Management Program Is

The program to be implemented consists of the following major actions:



**Table 1 - EIS Summary Comparison of Long Term Impacts of the Alternatives**

| Significant Resource                              | Existing Situation | Alt. 1<br>No Action | Alt. 2<br>Emphasize Livestock | Alt. 3<br>Preferred Alternative | Alt. 4<br>Emphasize Non-Livestock | Alt. 5<br>Emphasize Wild Horses |
|---|--------------------|---------------------|-------------------------------|---------------------------------|-----------------------------------|---------------------------------|
| <b>Water</b>                                      |                    |                     |                               |                                 |                                   |                                 |
| Runoff  |                    | NC                  | NC                            | + L                             | + L                               | + L                             |
| Fecal coliforms                                   |                    | NC                  | NC                            | + L                             | + H                               | + L                             |
| Sediment yield                                    |                    | NC                  | NC                            | + L                             | + M                               | + M                             |
| <b>Vegetation</b>                                 |                    |                     |                               |                                 |                                   |                                 |
| Range Trend (3,992,250 Acres Total)               |                    |                     |                               |                                 |                                   |                                 |
| Up  | 16%                | 42%                 | 64%                           | 78%                             | 77%                               | 58%                             |
| Static  | 75%                | 46%                 | 33%                           | 20%                             | 21%                               | 40%                             |
| Down  | 5%                 | 12%                 | 3%                            | 2%                              | 2%                                | 2%                              |
| Unknown   | 4%                 | 0%                  | 0%                            | 0%                              | 0%                                | 0%                              |
| Total residual ground cover                       | NC                 | NC                  | - H                           | - H                             | - M                               | - M                             |
| Forage production (AUMs)                          | 462,249            | NC                  | + 15%                         | + 12%                           | 6%                                | + 6%                            |
| <b>Streamside Riparian</b>                        |                    |                     |                               |                                 |                                   |                                 |
| Vegetation Trend (2,814 Acres Total) <sup>1</sup> |                    |                     |                               |                                 |                                   |                                 |
| Increasing  |                    | 3%                  | 3%                            | 14%                             | 15%                               | 15%                             |
| Static  |                    | 75%                 | 74%                           | 76%                             | 75%                               | 75%                             |
| Decreasing  |                    | 16%                 | 17%                           | 4%                              | 4%                                | 4%                              |
| Unknown   |                    | 6%                  | 6%                            | 6%                              | 6%                                | 6%                              |
| <b>Wildlife Populations</b>                       |                    |                     |                               |                                 |                                   |                                 |
| Deer  |                    | NC                  | NC                            | NC                              | NC                                | NC                              |
| Antelope  |                    | NC                  | + L                           | + L                             | NC                                | NC                              |
| Small mammals                                     |                    | NC                  | - L                           | - L                             | + L                               | + L                             |
| Water-associated birds                            |                    | NC                  | NC                            | + L                             | + L                               | + L                             |
| Upland game birds                                 |                    | NC                  | - L                           | - L                             | + L                               | + L                             |
| Other birds                                       |                    | NC                  | - L                           | - L                             | + L                               | + L                             |
| Reptiles  |                    | NC                  | - L                           | - L                             | + L                               | + L                             |
| Amphibians  |                    | - L                 | - L                           | - L                             | + L                               | + L                             |
| Fish  |                    | - M                 | - M                           | - L                             | + H                               | + H                             |
| <b>Soils</b>                                      |                    |                     |                               |                                 |                                   |                                 |
| Upland Erosion (3,992,250 Acres Total)            |                    |                     |                               |                                 |                                   |                                 |
| Decreasing  |                    | 40%                 | 7%                            | 17%                             | 41%                               | 37%                             |
| Static  |                    | 46%                 | 61%                           | 67%                             | 48%                               | 37%                             |
| Increasing  |                    | 14%                 | 32%                           | 16%                             | 11%                               | 26%                             |
| Streambank Erosion (375 Miles Total)              |                    |                     |                               |                                 |                                   |                                 |
| Increasing  |                    | 14%                 | 14%                           | 35%                             | 42%                               | 42%                             |
| Static  |                    | 45%                 | 41%                           | 46%                             | 40%                               | 38%                             |
| Decreasing  |                    | 26%                 | 30%                           | 4%                              | 3%                                | 5%                              |
| Unknown   |                    | 15%                 | 15%                           | 15%                             | 15%                               | 15%                             |
| <b>Wild Horses (Numbers)</b>                      | 1,531              | 1,365               | 900                           | 1,100                           | 600                               | 3,666                           |
| <b>Recreation</b>                                 |                    |                     |                               |                                 |                                   |                                 |
| Projected visitor use                             |                    | NC                  | NC                            | NC                              | NC                                | NC                              |
| <b>Visual Resources (Contrast)</b>                |                    | NC                  | - L                           | - L                             | NC                                | NC                              |
| <b>Special Areas</b>                              |                    |                     |                               |                                 |                                   |                                 |
| Degradation                                       |                    | NC                  | NC                            | NC                              | NC                                | NC                              |
| <b>Socioeconomics<sup>2</sup></b>                 |                    |                     |                               |                                 |                                   |                                 |
| Local personal income (\$000)                     | 44,100             | + 120/ + 120        | + 3045/ + 3430                | + 1918/ + 2700                  | + 567/ + 900                      | - 250/ + 466                    |
| Local employment (jobs)                           | 1,320              | + 4/ + 4            | + 114/ + 104                  | + 66/ + 81                      | + 19/ + 27                        | - 5/ + 14                       |

Note: NC = no change, + = beneficial, - = adverse, L = low, M = medium, H = high

<sup>1</sup> Species composition of key woody and herbaceous species.

<sup>2</sup> Socioeconomic impacts are shown as changes from the existing situation in Malheur County. Short term/long term changes in personal income (at annual rates) is in thousands of 1981 dollars.



- The initial allocation of existing available forage:

|                        |              |
|------------------------|--------------|
| Livestock              | 410,369 AUMs |
| Wildlife (competitive) | 5,296 AUMs   |
| Wild Horses            | 13,200 AUMs  |

- Categorization of allotments into the Improve category (14 allotments and 1,762,930 acres), the Maintain category (27 allotments and 1,932,354 acres), and the Custodial category (11 allotments and 233,337 acres) has been designed to concentrate public funds and management efforts on allotments which have the most significant problems and potential for improvement. Another 64,000 acres will continue in unallotted status.
- Implement grazing management plans on all allotments in Improve and Maintain categories. Refer to Administrative Action section of text.
- Construction of new range improvement projects at a cost of \$3,305,000 (includes both private and B.L.M. funding) to facilitate management to improve range use and condition.
- Monitoring and evaluation of changes in resource condition and uses caused by implementation of this decision.

The grazing management program includes a forage allocation to livestock, wildlife and wild horses to meet resource objectives. Forage allocations for each allotment are shown in Appendix 1. Overall, the initial livestock forage allocation is a 28 percent increase over the current active preference. This initial allocation is an increase over the current active preference on 22 allotments, no change on 27 allotments, and a decrease on 4 allotments. Reductions will be made in accordance with regulations as provided in 43 CFR 4110.3-2 (c). The initial livestock forage allocations will be subject to some change as a result of new data gathered during the ongoing consultation, allotment agreement and allotment management plan (AMP) process.

Grazing systems are designed to improve 148 miles of streamside riparian habitat. No livestock grazing would be permitted within existing exclusions (8,400 acres) or on 478 acres of new exclusions surrounding streams and reservoirs that have potential for significant riparian habitat improvement.

In order to improve wildlife habitat and to provide an adequate supply of forage for wildlife needs, big game is initially allocated 5,296 AUMs of competitive forage. Initial and long term forage allocations would meet the forage demand for the existing management objective numbers of the Oregon Department of Fish and Wildlife (ODFW) for deer, elk, antelope and bighorn sheep.

## What the Rangeland Management Program Does

This program enables BLM to meet the multiple use mandates and agency mission spelled out in the Federal Land Policy and Management Act (FLPMA, 1976), the Public Rangeland Improvement Act (PRIA, 1978), and the National Environmental Policy Act (NEPA, 1969). The following discussion summarizes the effects of the proposed rangeland management program.

### Range Condition and Forage Production

Grazing systems are designed to maintain or change ecological conditions to benefit wildlife, wild horses or livestock. Maximum utilization levels of 50 percent on native range and from 50-65 percent on seeded range are allowed, the latter being dependent upon grazing pressures needed to achieve specific pasture objectives in crested wheatgrass seedings. For example, in order to stimulate a seeding to produce maximum yields it may be necessary to allow periodic heavy utilization to remove old and decadent plants (wolf plants). Under these utilization levels, 410,369 AUMs would be available for allocation to livestock. Proposed range improvements include seedings (49,019 acres), brush controls (190,393 acres), fences (105 miles), and water developments (294 developments).

### Soils and Water

Overall soil and watershed conditions will be improved by the rangeland management program. Changes in trend of erosion on upland soils are directly correlated with changes in ecological condition and total residual cover (see Table 1 for trend). In riparian areas where livestock are excluded, water tables would be raised and summer flows increased. Water quality (sediment yield, water temperature, fecal coliforms) would improve slightly for those areas excluded from livestock. About 53 percent of the stream miles in the EIS area have little or no potential to respond to changes in livestock management, either because they are inaccessible to livestock or the riparian improvement potential is low.

### Aquatic and Riparian Habitat

Response to grazing management would occur primarily in the streamside riparian areas that are accessible to livestock and have a medium or high riparian improvement potential. On these streams (148 miles) livestock use would be either excluded (stream segments fenced from grazing), or controlled through special grazing treatments. Reservoir riparian habitats would improve by fencing nine existing reservoirs which have the potential for riparian improvement. Where



exceptional reservoir riparian potential exists, or would be developed in the future, measures would be taken to provide both livestock water and riparian improvement for wildlife species.

## Wildlife

Wildlife species differ widely in their habitat requirements. This range management program would help provide a variety of vegetative successional stages and a corresponding variety of habitats for wildlife. Small mammals, birds and fish that are dependent on riparian areas would increase. Conversely, reductions of small animals that are dependent on sagebrush would occur on approximately 239,400 acres because of seedings and brush controls. Deer populations are expected to remain stable with slight increases in antelope numbers due to proposed vegetative manipulations and new waters. Significant improvement in stream fish habitat would occur especially in the Trout Creek Mountains (Whitehorse Basin) on 42 miles of stream which contain the only known population of Whitehorse cutthroat trout.

The grazing systems planned in important deer and antelope winter ranges are expected to improve or maintain present habitat conditions.

## Wild horses

Wild horses would be allocated sufficient forage to provide for a maximum total population of 1,100 head. This is a reduction of 19 percent from the 1982 management levels (see Table 2). These levels were established based on limiting factors,

such as, availability of yearlong public water. Wild horse numbers were evaluated at a level which would utilize approximately half the forage in the herd management areas. Since there would be no introductions of unrelated brood stock from other areas a minimum viable herd size would be established at 75 animals. This would provide an adequate gene pool and result in healthy, vigorous herds. Three herd areas do not meet this criteria.

## Economic Conditions

The expenditure of approximately \$3,305,000 for construction of range improvements during a five year implementation period is expected to increase local personal income by \$450,000 annually. Based on the U.S. Forest Service IMPLAN System, an inter-industry model was prepared by the BLM and was used in estimating local personal income impacts to Malheur County.

In the short term a total loss of 3,155 AUMs of livestock forage would be experienced by 11 permittees. There would be a net gain of 90,023 AUMs experienced by 30 permittees. This net gain would result in an increase of \$1,500,000 of annual local personal income without any additional rangeland projects.

The effect on ranch values as collateral for loans or in the sale of the ranch properties has been

**Table 2 - Forage Allocation to Wild Horses**

| Herd Management Area     | 1982 Existing |              | No Action <sup>1</sup> |              | RPS Proposal    |              |
|--------------------------|---------------|--------------|------------------------|--------------|-----------------|--------------|
|                          | Numbers       | AUMs         | Min/Max                | AUMs         | Min/Max         | AUMs         |
| Basque                   | 38            | 456          | 19-37                  | 444          | 0               | 0            |
| Three Fingers            | 220           | 2640         | 90-150                 | 1800         | 75-150          | 1800         |
| Cold Springs             | 167           | 2004         | 80-130                 | 1560         | 75-150          | 1800         |
| Cottonwood Creek         | 64            | 768          | 38-70                  | 840          | 0               | 0            |
| Jackies Butte            | 215           | 2580         | 75-150                 | 1800         | 75-150          | 1800         |
| Sand Springs             | 260           | 3120         | 130-260                | 3120         | 100-200         | 2400         |
| Coyote Lake <sup>2</sup> | 162           | 1944         | 81-162                 | 1944         | 125-250         | 3000         |
| Sheepshead               | 385           | 4620         | 193-385                | 4620         | 100-200         | 2400         |
| Potholes                 | 20            | 240          | 15-21                  | 252          | 0               | 0            |
| Atturbury                | 0             | 0            | 0                      | 0            | 0               | 0            |
| Cottonwood Basin         | 0             | 0            | 0                      | 0            | 0               | 0            |
| Morger                   | 0             | 0            | 0                      | 0            | 0               | 0            |
| Stockade                 | 0             | 0            | 0                      | 0            | 0               | 0            |
| <b>Totals</b>            | <b>1531</b>   | <b>18372</b> | <b>751-1365</b>        | <b>16380</b> | <b>550-1100</b> | <b>13200</b> |

<sup>1</sup>No Action herd levels are at the 1982 management levels. Potholes, Basque, Three Fingers, Cold Springs, Cottonwood Creek and Jackies Butte herd levels are based on the 1975 Management Framework Plans. Levels for other herds are based on 1982 herd levels.

<sup>2</sup>Vale District horses only.



calculated by using a public forage license value of \$45 per AUM. Accordingly, 11 permittees would have the value of their property reduced by nearly \$142,000 in the short term. Conversely, there would be a gain of over 4 million dollars in ranch value for 30 permittees.

Under the grazing management program local income and employment attributable to forage use would be increased assuming that all active grazing preferences were utilized.

## How the Rangeland Management Decision was Developed

### Alternatives Analyzed in the EIS

The Southern Malheur EIS analyzed the environmental consequences of the preferred rangeland management program and four alternative programs. Refer to the EIS for a detailed description of the alternatives and to Table 1 for a comparison of the long term effect of the various EIS alternatives. Following is a brief discussion of each alternative and why it was or was not selected.

#### No Action (Alternative 1)

Alternative 1 continues the present situation. No changes from present management conditions would occur. Grazing permits would continue to be issued at 1981 active preference levels, which is below grazing capacity on seven allotments (572,526 acres) and at or above grazing capacity on 46 allotments (3,419,724 acres). As shown on Appendix 1, there would be no change in the 1981 forage allocation levels. Wild horses occurring in nine herd management areas would continue to be managed as identified in existing wild horse management plans and gathering plans.

The No Action Alternative was not selected because it fails to make beneficial use of existing surplus forage and would not correct existing resource problems such as poor condition or riparian areas and upland areas of unsatisfactory ecological condition.

#### Emphasize Livestock Grazing (Alternative 2)

The objective of Alternative 2 is to allocate a high level of forage to livestock while maintaining or improving range and forage conditions. Under this alternative forage production for livestock would increase by 40 percent (124,710 AUMs) over 1981 active use levels. The initial and long term allocations under this alternative would provide sufficient forage to meet current Oregon

Department of Fish and Wildlife big game objectives for mule deer and antelope and would allow a total maximum wild horse population of approximately 900 horses in six herd areas. Grazing systems and range improvements are designed to maximize livestock grazing benefits. Livestock grazing would be allowed throughout the EIS area except where currently excluded.

This alternative was not selected because residual ground cover and riparian vegetation would decrease significantly. Decreases in wildlife diversity and fish populations and an increase in erosion can be expected with these losses. Also, many of the proposed range improvements would not be cost effective.

#### Preferred Alternative (Alternative 3)

The objective of Alternative 3 is to implement intensive grazing management to improve and maintain ecological and forage conditions to benefit wildlife, wild horses and livestock. Under this alternative forage production for livestock would increase by 29 percent (91,442 AUMs) over 1981 active use levels. The initial and long term allocations under this alternative would provide sufficient forage to meet current Oregon Department of Fish and Wildlife big game objectives for mule deer and antelope. A maximum wild horse population of approximately 1,100 horses would be maintained in six herd management areas. Grazing systems are designed to maintain or improve ecological and streamside riparian habitat. Only cost effective range improvement projects would be implemented under this alternative.

The Preferred Alternative was selected because it provides the greatest overall benefits to resource conditions and social and economic needs. This alternative would take advantage of existing surplus forage while improving riparian habitat and areas in unsatisfactory ecological condition. Other reasons for selecting the Preferred Alternative are discussed in the section on Environmental Preferability of Alternatives.

#### Emphasize Non-Livestock Values (Alternative 4)

The objective of this alternative is to emphasize non-livestock values where conflicts with livestock grazing has been identified. Under this alternative forage production for livestock would increase by 10 percent (32,638 AUMs over 1981 active use levels. Initial and long term allocations under this alternative would provide sufficient forage to meet current Oregon Department of Fish and Wildlife big game herd management objectives. The allocation to wild horses would be sufficient to maintain a maximum population of 600 horses in



four herd areas. Under this alternative no livestock grazing would be authorized in existing exclusions and would be restricted from perennial and intermittent riparian areas having potential for improvement. Responses to grazing management under this alternative would occur primarily in the streamside areas that are accessible to livestock and have a medium to or high riparian improvement potential.

This Alternative was not selected because it significantly reduces economic benefits in order to achieve minor improvements in low potential riparian areas. This alternative also drastically reduces wild horse populations.

### **Emphasize Wild Horses (Alternative 5)**

The objective of Alternative 5 is to emphasize wild horse values in all 13 wild horse herd management areas. Outside herd management areas the grazing management program would remain the same as for the Emphasize Non-livestock Alternative (Alternative 4). Under this alternative forage production for livestock would decrease seven percent (20,652 AUMs) from the 1981 active use levels. The allocation to wild horses would be sufficient to maintain a maximum population of 3,666 horses. Sufficient forage would also be provided to meet current Oregon Department of Fish and Wildlife big game objectives.

This alternative was not selected because ecological conditions would not improve on wildhorse herd areas because proper grazing management could not be implemented. Both personal income and employment would decrease in the short term and would only increase slightly in the long term.

## **Environmental Preferability of the Alternatives**

Environmental preferability is judged using the criteria in the National Environmental Policy Act of 1969 (NEPA). Title I, Section 101(b) of NEPA establishes the following goals:

1. fulfill the responsibilities of each generation as trustee of the environment for succeeding generations;
2. assure for all Americans a safe, healthful, productive, and esthetically and culturally pleasing surroundings;
3. attain the widest range of beneficial uses of the environment without degradation, risk to health or safety, or other undesirable and unintended consequences;
4. preserve important historic, cultural, and natural aspects of our national heritage, and maintain, wherever possible, an environment which supports a diversity and variety of individual choice;

5. achieve a balance between population and resource use which will permit high standards of living and a wide sharing of life's amenities; and
6. enhance the quality of renewable resources and approach the maximum attainable recycling of depletable resources.

The Preferred Alternative in the EIS ranked first in environmental preferability. It was felt to be in compliance with all NEPA goals, especially goals 1, 3, 5 and 6. The Preferred Alternative was followed by the Emphasize Non-livestock Values (Alternative 4). While Alternative 4 was felt to be in greater compliance with goal 2 than the Preferred Alternative, it was felt that it did not comply as well with goals 5 and 6.

The Emphasize Livestock Alternative (Alternative 2) was in greatest compliance with goal 6 and to a lesser degree goals 1 and 5 because of its emphasis on maximum productivity. The continue present management or No Action Alternative (Alternative 1) was felt to be in compliance with goals 2 and 4 because it maintains current conditions. This alternative was not in compliance with goals 1, 3, 5 and 6 since it makes no attempt to enhance environmental quality or diversity and does not improve social or economic well being. The Emphasize Wild Horses Alternative (Alternative 5) was in compliance with goal 3 since it removes all impacts of livestock grazing in wild horse herd areas. It is not in compliance with goals 2, 5 and 6 because of adverse effects on economic conditions.

## **Relationship of the Rangeland Management Program to the Southern Malheur EIS Preferred Alternative.**

The grazing systems, forage allocation and range improvements listed below are similar to the Preferred Alternative described in detail in the Draft Southern Malheur Grazing Management EIS.

Changes to the Preferred Alternative are identified in tables 3 and 4.

**Table 3 - Comparison of Initial Forage Allocations (AUMs)**

|                 | <b>Preferred<br/>Alternative<br/>Allocation</b> | <b>RPS<br/>Allocation</b> |
|-----------------|---|---------------------------|
| Livestock       | 411,021 <sup>1</sup>                            | 410,369                   |
| Wildlife        | 5,296   | 5,296                     |
| Wild Horses     | 13,200  | 13,200                    |
| Non-Consumptive | 30,463  | 30,463                    |

<sup>1</sup>Erroneously shown in EIS as 404,463.



**Table 4 - Comparison of Proposed Range Improvements**

| Type of Range Improvements | EIS Preferred Alternative | RPS Decision |
|----------------------------|---------------------------|--------------|
| Fence (miles)              | 123                       | 105          |
| Spring (each)              | 66                        | 74           |
| Pipeline (miles)           | 25.3                      | 39           |
| Wells (each)               | 4                         | 3            |
| Reservoirs (each)          | 148                       | 168          |
| Waterholes (each)          | 8                         | 10           |

**Vegetation Manipulation (acres)**

|                    |        |                      |
|--------------------|--------|----------------------|
| Brush control/Seed | 34,695 | 44,999               |
| Seed Only          | 0      | 4,020                |
| Brush Control      | 79,581 | 190,393 <sup>1</sup> |

<sup>1</sup>Increase due to planned shift to burning which is far more cost-effective than originally proposed chemical spray.

• **Forage Allocation**

The RPS forage allocation is slightly less than the allocation in the EIS as outlined in Table 3. Changes resulted from the incorporation of 1982 forage production data. Adjustments in livestock use will be made only when and to the extent estimated forage production is greater or less than 10 percent of current active preference. The forage allocation total in the EIS was incorrectly shown as 404,463 AUMs instead of 411,021 AUMs.

• **Grazing Systems**

The differences between the EIS Proposed Action and the RPS initial decision are the results of the selective management policy, Rangeland Investment Analysis and the ongoing consultation process. The revised period of use and grazing systems are shown in Appendix 2.

• **Range Improvements**

There is a significant difference between the proposed range improvement program shown in Table 4 and those included as part of the Southern Malheur EIS Proposed Action. Changes are the result of project elimination or modification based upon an updated Rangeland Investment Analysis and implementation of the selective management policy. The Rangeland Investment Analysis was used to design and evaluate the economic efficiency of various combinations of range improvements and management actions. The benefit/cost (B/C) ratio and internal rate of return (IROR) are two numeric indicators of economic efficiency. The B/C ratio presents a proportion of benefits to costs for an investment, given an interest rate of 7.895 percent. Ratios greater than

1.0 indicate that benefits from reinvestment outweigh costs of investment and vice versa for ratios less than 1.0. The other method of analysis used in evaluating economic efficiency is the IROR. This method analyzes the costs and benefits of an investment over time and presents the rate of return on that investment. The B/C ratio and IROR for these allotments are illustrated in Appendix 3.

The modifications and revisions from the Southern Malheur EIS include adding projects to the investment package and changing the method of treatment to achieve the same objective. For example: the original B/C analysis considered only chemical brush control, while the updated analysis considered brush control by chemical and/or burning. Brush control by burning is more cost effective than chemical application and as a result, additional acres of brush control by burning are proposed within this RPS, to speed up change in ecological conditions from fair to good. The additional seeding would improve areas in poor ecological condition. Additional projects are also included that were not cost effective when analyzed alone, but cost effective when considered in a package with other projects.

**Public Involvement**

The public was involved throughout the planning process to identify issues and concerns. Issues related to grazing management that were identified include the following:

- How should vegetation be allocated?
- How should livestock grazing be managed?
- How should wildlife habitat be managed?
- How and where should wild horses be managed?
- How should wetland, riparian and stream habitats be managed?

Public meetings for scoping the Southern Malheur Grazing Management Environmental Impact Statement (EIS) were combined with meetings to discuss the development of the Preferred Alternative for the Southern and Northern Resource Area's Management Framework Plans (MFP). The MFPs at that stage consisted of four land use allocation alternatives that had been developed from criteria established with earlier public input. The four alternatives called for various allocations of forage, different amounts of protection for riparian areas and various proposals for range investments.

The MFP alternatives were discussed in five public meetings in McDermitt, Nevada; Boise, Idaho; and Vale, Jordan Valley and Portland, Oregon, during late September and early October, 1982. Oral and



written comments were used in developing the alternatives to be analyzed in the Southern Malheur EIS. These comments led to the development of the Preferred Alternative and four other alternatives.

The comments received during scoping focused on four main issues: riparian area management, wild horses, forage allocation and range investments.

The Draft Southern Malheur Grazing Management Environmental Impact Statement (Interior DEIS 83-21) was filed with the Environmental Protection Agency and released to the public in April 1983 and open for comments until June 30, 1983. Informal public meetings were held in Jordan Valley and Vale, Oregon, June 7 and 9, 1983, to answer questions on the draft EIS. Comments that presented new data, questioned facts or the adequacy of the impact analysis, or raised questions or issues bearing directly on the draft EIS were responded to in the Final EIS (Interior FEIS 83-39) released September 21, 1983. The primary concern expressed was related to the treatment of riparian areas in the grazing management program. Reexamination of site-specific proposals and impact analysis as shown in the DEIS indicated that the riparian improvement objectives of the Preferred Alternative were not being achieved. Therefore, the grazing management proposed in the Preferred Alternative (Alternative 3) for streamside riparian areas was revised in the final EIS. The revision affects site-specific proposals for grazing management on approximately 76 miles of stream. This change would place more stream riparian areas under deferred rotation management, which would exclude grazing during July and August every year.

## **How the Rangeland Management Decision will be Implemented**

### **Administrative Actions**

Release of this Southern Malheur Rangeland Program Summary (RPS) and Record of Decision serves as public notice of the proposed range management program and will be the start of a 30 day comment period.

After release of the RPS, allotment management plans (AMPs) will be developed for the majority of allotments. Consultation and coordination with the affected range users and other interested parties will be a part of allotment management plans and allotment agreements.

Appendices 1, 2 and 3 outline the major actions to be taken on each allotment and is in essence the Record of Decision required by the Council on Environmental Quality (CEQ) regulations.

The order of range improvement completion and annual expenditures by BLM for range supervision, monitoring and project maintenance has been based upon the allotment categorization under the selective management policy (see Appendix 1). Under this policy each allotment was placed in one of three management categories. The policy is designed to concentrate public funds and management efforts on allotments that have the most significant problems and potential for improvement.

There are three categories into which allotments have been grouped according to their present condition and potential: Improve (I) Category, Maintain (M) Category, and Custodial (C) Category. Objectives for the categories are to: "improve" current unsatisfactory resource condition; "maintain" current satisfactory resource condition; and manage "custodially", while protecting existing resource values.

## **Grazing Decisions**

Forage allocation, categorization and grazing systems proposed for each allotment are shown in Appendix 1 and 2.

Where the proposals reflect no change from the present situation this RPS serves as the Record of Decision.

In those cases where changes from the present situation are proposed, the changes will be implemented by agreement with the concerned parties if possible. Where consultation does not result in agreement, individual decisions will be issued to implement the proposal.

In those cases where individual decisions are required they will be issued prior to the 1984 grazing season.

Increases or decreases in livestock forage will be accomplished in three increments, on the first, third and fifth year of a five year implementation period, except that adjustments of 15 percent or less of active preference will be phased in over a period of less than 5 years. These adjustments may subsequently be modified based on the results of monitoring.



## Range Improvements and Appropriations

Achieving the resource objectives of the Southern Malheur Land Use Plan is dependent upon receiving sufficient funding to complete range improvements, and adequate staffing to implement grazing systems, supervise grazing use and monitor resource changes. A list of projects, a ranking by priority and the approximate cost for implementation are shown in Appendix 3. Ranking of allotment priority is based on resource condition and proposed projects at the present time. Allotment analysis will be a continuing process that reflects current conditions. Ranking is subject to change based on changes in resource conditions, project redesign, or private contributions by individual operators.

Consistent with Bureau policy, first priority for rangeland improvements will be given to Improvement (I) category allotments. Range improvements in the Maintain (M) category and Custodial (C) category allotments will generally only be implemented if the necessary funds are provided by the individual operator. Exceptions such as fencing fishery streams and reservoirs in Maintain(M) and Custodial(C) categories may be made to prevent loss of a critical resource value or to assure continuing operation of an existing management plan.

Projects in wilderness study areas will be governed by the wilderness interim management guidelines until Congress has determined whether they will or will not be designated wilderness.

Installation of the proposed rangeland facilities will begin in a limited way in fiscal year 1984 and continue as funds are available. BLM's range management and improvement programs are funded through congressional appropriations and one-half of the grazing fees collected. Allotment Management Plans will normally be a prerequisite for project implementation.

## Resource Monitoring and Evaluation

A number of different resource studies will be conducted to evaluate the effectiveness of the range management program and are included in the district monitoring plan completed in March, 1983. Both the type and intensity of monitoring will vary considerably between the three allotment management categories outlined in the selective management policy.

Monitoring in the Improve (I) category will be most intensive and will be designed to measure

progress toward objectives and the environmental factors that affect progress.

In the Maintain (M) category allotments, monitoring will be less intensive with primary emphasis on detecting changes from current resource conditions.

Monitoring in the Custodial (C) category allotments will be limited to periodic inventories and observations of resource uses to measure long-term resource condition changes.

Regardless of the management category, monitoring will be continued at the present intensity on all allotments where there would be substantial changes in use levels. The monitoring intervals and standards are based on the sensitivity of the resource to the decisions involved.

The following are the major rangeland elements to be monitored.

### Trend and Utilization

Trend studies will be conducted to determine changes in plant species composition in relation to vegetation objectives. Forage utilization studies will be conducted to determine pattern of grazing and how much vegetation is removed by grazing animals. Browse utilization studies will be used in deer and antelope winter range.

### Sensitive, Threatened or Endangered Species

Prior to implementation of the grazing management program, field investigations and analysis will be made to evaluate possible impacts to these species.

### Livestock

In the Intensive and Maintain Category allotments, livestock use data will be obtained from the permittee annually. These records will reflect the number and class of animals grazing in each pasture and the amount of time they graze.

Livestock counts in conjunction with an "as needed" ear tagging program will be used by the Bureau to verify these records.

### Wildlife

Use data will be obtained on antelope, deer, elk and bighorn sheep from Oregon Department of Fish and Wildlife and supplemental BLM studies. Important habitats will be monitored to identify wildlife needs, and habitat trends and use. Use



patterns, periodic observation and consultation with other agencies will be the principal monitoring methods. Nesting success studies will be continued for raptors.

Studies will be conducted in representative riparian areas to determine changes in habitat conditions and populations of fish and wildlife. Such monitoring would comply with BLM Manual procedures. Studies will include collection of data on aquatic insects, water temperature, riparian aquifer recharge, and fish composition.

### **Water Quality**

Water quality monitoring will be initiated in accordance with BLM policies and Sections 208 and 313 of the Federal Clean Water Act.

### **Weather**

Weather data will be evaluated annually to determine the effects of crop year precipitation on herbage yields and for correlation with utilization studies.

### **Opportunities for Protest and Appeal**

This RPS outlines the decisions developed for the Southern Malheur EIS area. The program and related decisions are the result of land use planning and the analysis of several alternative programs contained in the Southern Malheur Draft EIS published in April 1983.

The release of this RPS to interested groups and individuals serves as public notice of the decisions relating to range management on BLM administered lands in the Southern Malheur EIS area. Interested parties if they so indicate in writing will receive copies of individual grazing decisions needed to implement the program. Individual decisions will begin to be issued to the affected permittees 30 days after release of this document for those allotments where changes are proposed and agreement has not been reached. These decisions will be listed in subsequent RPS updates.

Copies of agreements that have been completed will be available for public inspection during regular work hours at the Vale District BLM Office.

### **Periodic Progress Reports**

As this rangeland management program is implemented, a record of progress will be maintained and specific program details will be outlined in periodic updates of the RPS. These publications will contain a summary of livestock

grazing decisions, monitoring results, range improvement progress, improvement efforts made by permittees and management system information.

This record of progress will be reflected in future RPS updates that will be distributed for public information and comment.



# APPENDICES



## Appendix 1 - RPS Livestock Forage Allocation (AUMs)

| Allot. No. | Allotment Name     | Federal Acres | Categorization <sup>1</sup> | Big Game AUMs | Wild Horses AUMs | 1981 Livestock Active Preference | 1982 Suspended Preference | EIS Preferred Alternative Livestock Allocation | RPS <sup>5</sup> Livestock Allocation | Comments       |
|------------|--------------------|---------------|-----------------------------|---------------|------------------|----------------------------------|---------------------------|--|---------------------------------------|----------------|
| 0300       | Skull Springs      | 278,465       | I                           | 639           | 1,800            | 27,332                           | 0                         | 27,379   | 27,332                                | 2, 5           |
| 0303       | Turnbull Lake      | 81,403        | M                           | 45            | 0                | 6,964                            | 0                         | 8,005  | 6,964                                 |                |
| 0304       | Black Butte        | 50,091        | I                           | 176           | 0                | 5,779                            | 0                         | 7,319  | 6,665                                 |                |
| 0305       | Bridge Creek       | 13,531        | M                           | 102           | 0                | 1,178                            | 0                         | 1,609  | 1,216                                 |                |
| 0306       | Jonesboro          | 19,936        | I                           | 153           | 0                | 2,661                            | 0                         | 2,748  | 2,661                                 |                |
| 0307       | Boney Basin        | 17,002        | I                           | 144           | 0                | 2,963                            | 0                         | 2,487  | 2,663                                 | 2              |
| 0400       | Harper Basin       | 427,338       | I                           | 644           | 0                | 38,910                           | 0                         | 34,213   | 38,539                                | 9, 5           |
| 0407       | Little Valley      | 13,916        | M                           | 23            | 0                | 774                              | 0                         | 1,243  | 1,400                                 | 2, 9           |
| 0408       | Mitchell Butte     | 2,545         | C                           | 17            | 0                | 152                              | 0                         | 55   | 114                                   |                |
| 0410       | Radar Hill         | 5,126         | M                           | 11            | 0                | 686                              | 0                         | 680  | 686                                   |                |
| 0412       | Chalk Butte        | 261           | I                           | 7             | 0                | 60                               | 0                         | 53   | 60                                    |                |
| 0500       | Mahogany           | 327,129       | I                           | 786           | 1,800            | 34,848                           | 16,618                    | 32,260   | 34,848                                | 2, 5           |
| 0501       | Blackjack          | 14,232        | M                           | 71            | 0                | 1,050                            | 0                         | 1,103  | 1,050                                 |                |
| 0502       | Derrick            | 844           | M                           | 11            | 0                | 244                              | 0                         | 233  | 244                                   |                |
| 0506       | Birch Creek        | 2,751         | M                           | 19            | 0                | 191                              | 0                         | 170  | 191                                   |                |
| 0601       | Dowell             | 47,742        | C                           | 36            | 0                | 2,450                            | 0                         | 2,751  | 2,450                                 | 7              |
| 0602       | Horseshoe T        | 42,537        | C                           | 123           | 0                | 4,025                            | 0                         | 3,906  | 4,025                                 | 7              |
| 0603       | McEwen             | 60,656        | M                           | 129           | 0                | 5,254                            | 0                         | 7,193  | 7,527                                 | 1, 2, 3, 10    |
| 0604       | Morger             | 61,783        | C                           | 62            | 0                | 2,100                            | 0                         | 1,965  | 2,100                                 | 7              |
| 0605       | Venator            | 21,604        | M                           | 96            | 0                | 2,309                            | 0                         | 2,463  | 2,309                                 | 2, 10          |
| 0701       | Sheepheads         | 78,682        | M                           | 72            | 1,344            | 3,000                            | 0                         | 3,902  | 4,985                                 | 1, 2, 3, 5, 11 |
| 0801       | Barren Valley      | 442,894       | M                           | 124           | 5,706            | 10,237                           | 0                         | 29,049   | 35,463                                | 1, 2, 3, 5, 11 |
| 0802       | Sand Gap           | 40,012        | C                           | 4             | 750              | 1,119                            | 0                         | 2,085  | 1,119                                 | 10             |
| 0901       | Lodge              | 17,404        | M                           | 4             | 0                | 3,150                            | 0                         | 3,066  | 3,150                                 | 2, 5, 10       |
| 0902       | West Cow Creek     | 139,885       | M                           | 116           | 0                | 9,738                            | 0                         | 16,294   | 15,271                                | 2, 5, 11       |
| 0903       | East Cow Creek     | 44,379        | M                           | 42            | 0                | 6,444                            | 0                         | 8,366  | 8,141                                 | 2, 5           |
| 0904       | Bogus Creek        | 4,498         | C                           | 0             | 0                | 250                              | 0                         | 250  | 250                                   | 10             |
| 0905       | Oliver             | 6,897         | M                           | 12            | 0                | 560                              | 0                         | 504  | 560                                   | 2              |
| 0907       | Morcum             | 5,566         | C                           | 0             | 0                | 150                              | 0                         | 150  | 80                                    | 8, 10          |
| 1001       | Arock              | 67,997        | M                           | 108           | 0                | 9,519                            | 0                         | 14,898   | 13,709                                | 2, 5, 11       |
| 1002       | Antelope           | 52,465        | I                           | 58            | 0                | 10,671                           | 0                         | 10,128   | 10,415                                | 6              |
| 1003       | Wroten             | 16,218        | I                           | 0             | 0                | 2,636                            | 330                       | 3,987  | 2,695                                 | 2, 3           |
| 1004       | Willow Creek       | 74,901        | I                           | 103           | 0                | 10,521                           | 1,639                     | 13,986   | 10,975                                | 1, 2, 3, 5     |
| 1005       | Raburn             | 6,254         | M                           | 0             | 0                | 1,040                            | 0                         | 1,383  | 1,257                                 | 2, 3, 11       |
| 1006       | Eiguren Individual | 3,266         | C                           | 0             | 0                | 301                              | 0                         | 367  | 301                                   | 5, 10          |



| Allot. No.    | Allotment Name   | Federal Acres                | Categorization <sup>1</sup> | Big Game AUMs | Wild Horses AUMs | 1981                        | 1982                 | EIS Preferred                    | RPS <sup>5</sup>     | Comments    |
|---------------|------------------|------------------------------|-----------------------------|---------------|------------------|-----------------------------|----------------------|----------------------------------|----------------------|-------------|
|               |                  |                              |                             |               |                  | Livestock Active Preference | Suspended Preference | Alternative Livestock Allocation | Livestock Allocation |             |
| 1007          | Arelgold         | 1,864                        | C                           | 0             | 0                | 194                         | 0                    | 194                              | 194                  | 5, 10       |
| 1101          | Jackies Butte    | 212,161                      | M                           | 76            | 1,800            | 14,334                      | 0                    | 24,884                           | 21,611               | 2, 3, 11    |
| 1102          | Ambrose Maher    | 4,002                        | C                           | 32            | 0                | 580                         | 0                    | 580                              | 580                  | 10          |
| 1103          | Jackies Butte    | 19,522                       | C                           | 34            | 0                | 485                         | 0                    | 1,182                            | 485                  | 4           |
| 1201          | Fifteen Mile     | 331,400                      | I                           | 392           | 0                | 25,713                      | 0                    | 25,308                           | 25,713               | 2, 3, 5     |
| 1202          | McCormick        | 53,808                       | I                           | 60            | 0                | 8,694                       | 2,561 <sup>6</sup>   | 5,107                            | 6,133                | 2, 11       |
| 1203          | Zimmerman        | 30,474                       | I                           | 95            | 0                | 5,208                       | 2,233                | 5,295                            | 7,301 <sup>4</sup>   | 2           |
| 1204          | Willow Creek     | 83,442                       | I                           | 122           | 0                | 5,030                       | 0                    | 5,183                            | 5,030                | 2, 5        |
| 1301          | Gilbert          | 52,781                       | M                           | 109           | 0                | 4,277                       | 0                    | 8,316                            | 7,394                | 2, 11       |
| 1302          | Echave           | 16,762                       | M                           | 9             | 0                | 1,500                       | 0                    | 3,573                            | 4,013                | 2, 3, 11    |
| 1303          | Sherburn         | 44,026                       | M                           | 34            | 0                | 3,613                       | 0                    | 8,110                            | 7,996                | 2, 3, 11    |
| 1304          | Albisu-Alcorta   | 12,843                       | M                           | 33            | 0                | 994                         | 0                    | 1,299                            | 1,436                |             |
| 1305          | Eiguren          | 64,443                       | M                           | 20            | 0                | 5,500                       | 0                    | 8,683                            | 7,113                | 2, 3, 11    |
| 1306          | Campbell         | 157,037                      | M                           | 40            | 0                | 14,364                      | 0                    | 37,443                           | 34,812               | 1, 2, 3, 11 |
| 1307          | Louse Canyon     | 127,785                      | M                           | 104           | 0                | 11,135                      | 0                    | 16,755                           | 14,555               | 1, 2, 3, 11 |
| 1308          | Ten Mile Seeding | 3,477                        |                             | 0             | 0                | 0                           | 0                    | 657                              | 664                  | 2, 5        |
| 1401          | Anderson         | 39,404                       | M                           | 73            | 0                | 2,964                       | 0                    | 5,429                            | 6,564                | 1, 2, 3, 11 |
| 1402          | Star Valley      | 183,180                      | M                           | 126           | 0                | 6,495                       | 0                    | 6,773                            | 7,360                | 1, 2, 3, 11 |
| <b>Totals</b> |                  | <b>3,992,250<sup>2</sup></b> |                             | <b>5,296</b>  | <b>13,200</b>    | <b>320,346</b>              | <b>23,381</b>        | <b>411,021<sup>3</sup></b>       | <b>410,369</b>       |             |

<sup>1</sup> Categorization (see Administrative Actions section for definitions)

I - Improve  
M - Maintain  
C - Custodial

<sup>2</sup> Includes approximately 64,000 acres with grazing use presently unallotted.

<sup>3</sup> Changed due to addition error in final EIS.

<sup>4</sup> Now includes allocation of forage for pastures located in Nevada.

<sup>5</sup> RPS livestock allocation includes 1982 monitoring data and additional criteria whereby no change required if active preference is within 10% of forage production. Allocation becomes final unless protested in writing within 30 days after release of the RPS.

<sup>6</sup> Voluntary non-use

#### Comments

1. Allocation dependent on project implementation.
2. Consultation continuing.
3. Allocation dependent on implementation of grazing system.
4. Allocation dependent on utilization monitoring results.
5. Allotment boundary adjustments probable. New allotments may be formed.
6. Consultation resulted in changed grazing system/season of use rather than reduced allocation.
7. State exchange to be consummated in the near future. No change is anticipated.
8. Public land acreage and grazing capacity changed due to allotment boundary changes and grazing preference transfers.
9. Grazing preference transfer from Harper Basin (0400) to Little Valley (0407).
10. No change.
11. Adjustments to be made in increments based on monitoring studies.



## Appendix 2 - Grazing Systems

| Allotment Number | Pasture Number     | Pasture Name        | Primary Objectives | Present Grazing System | EIS Preferred Alternative Grazing System | RPS Grazing System Decision | Comments |
|------------------|--------------------|---------------------|--------------------|------------------------|--|-----------------------------|----------|
| ■0300            | 101                | N Racehorse         | A                  | RR4                    | DR1                                      | DR1                         | 2        |
|                  | 102                | S Racehorse         | A                  | EA                     | DR1                                      | DR1                         | 2        |
|                  | 103                | Simmons Gulch       | D                  | RR4                    | DR2                                      | DR2                         | 2        |
|                  | 104                | Squaw Cr Sdg        | A                  | DR1                    | DR1                                      | DR1                         | 2        |
|                  | 105                | Shearing Plant      | D                  | DR1                    | DR2                                      | DR1                         | 2        |
|                  | 106                | Lake Ridge          | D                  | RR2                    | DR2                                      | DR2                         | 2        |
|                  | 107                | Rufino Butte        | A                  | DR1                    | DR1                                      | DR1                         | 2        |
|                  | 108                | Red Butte           | A                  | DR1                    | DR1                                      | DR1                         | 2        |
|                  | 109                | No Butte Cr         | A                  | DR4                    | DR1                                      | DR1                         | 2        |
|                  | 110                | Middle Butte Cr     | A                  | DR4                    | DR1                                      | DR1                         | 2        |
|                  | 111                | So Butte Cr         | A                  | DR4                    | DR1                                      | DR1                         | 2        |
|                  | 112                | FFR                 | B                  | FFR                    | FFR                                      | FFR                         | 3        |
|                  | 113                | Windy Res Ex        | D                  | DR1                    | EXO                                      | EXO                         | 1        |
|                  | 114                | Cherry Cr Res Ex    | D                  | DR1                    | EXO                                      | EXO                         | 1        |
|                  | 115                | Tim Peak Res Ex     | D                  | EXO                    | EXO                                      | EXO                         | 1        |
| 116              | Hannah Res Ex      | D                   | DR1                | EXO                    | EXO                                      | 1                           |          |
| 117              | Squaw Cr Res Ex    | D                   | EXO                | EXO                    | EXO                                      | 1                           |          |
| 118              | Box Canyon         | A                   | RR2                | DR1                    | DR1                                      | 2                           |          |
| 201              | Basque             | D                   | RR2                | DR2                    | DR2                                      | 2                           |          |
| 202              | Slaughter Gulch    | A                   | RR2                | DR1                    | DR1                                      | 2                           |          |
| 203              | Cottonwood Basin   | A                   | RR2                | DR2                    | DR1                                      | 2                           |          |
| 204              | Arrien FFR         | B                   | SS                 | DR1                    | DR1                                      | 2                           |          |
| 205              | Mosquito SDG       | B                   | RR2                | DR1                    | DR1                                      | 2                           |          |
| 207              | Granite Cr         | A                   | RR4                | DR1                    | DR1                                      | 2                           |          |
| 208              | Canyon             | D                   | WO                 | DR1                    | DR1                                      | 2                           |          |
| 209              | Horse Queen        | A                   | DR1                | DR1                    | DR1                                      | 2                           |          |
| 210              | Atturbury          | B                   | RR2                | DR1                    | DR1                                      | 2                           |          |
| 211              | Monument           | B                   | DF                 | DR1                    | DR1                                      | 2                           |          |
| 212              | Chapman            | A                   | DR1                | DR1                    | DR1                                      | 2                           |          |
| 213              | Road Canyon        | A                   | DR1                | DR1                    | DR1                                      | 2                           |          |
| 214              | Wildcat Coldspring | A                   | RR2                | DR1                    | DR1                                      | 2                           |          |
| 215              | FFR                | B                   | FFR                | FFR                    | FFR                                      | 3                           |          |
| 216              | Granite Cr Res     | D                   | DR1                | DR1                    | DR1                                      | 2                           |          |
| 217              | Chapman Res        | D                   | RR4                | RR4                    | RR4                                      | 2                           |          |
| 218              | Littlefield Res    | D                   | DF                 | EXO                    | EXO                                      | 1                           |          |
| 0303             | 226                | Creston             | A                  | RR4                    | DR1                                      | DR1                         | 2        |
|                  | 01                 | Slaten              | A                  | RR2                    | DR1                                      | DR1                         | 2        |
|                  | 02                 | Juniper Mtn         | B                  | DF                     | DF                                       | DF                          | 2        |
|                  | 03                 | Whiskey Spring      | A                  | RR2                    | DR1                                      | DR1                         | 2        |
| 04               | Clark Flat         | A                   | RR2                | DR1                    | DR1                                      | 2                           |          |
| ■0304            | 05                 | Sand Basin          | A                  | RR2                    | DR1                                      | DR1                         | 2        |
|                  | 06                 | FFR                 | B                  | FFR                    | FFR                                      | FFR                         | 3        |
|                  | 01                 | Juntura Sdg         | B                  | EA                     | SS                                       | DR1                         | 2        |
|                  | 02                 | Butte               | A                  | RR2                    | RR2                                      | DR1                         | 2        |
|                  | 03                 | Terry Basin         | B                  | RR2                    | RR2                                      | DR1                         | 2        |
|                  | 04                 | Meeker Mtn          | A                  | DR2                    | DR1                                      | DR1                         | 2        |
|                  | 05                 | Weisner             | D                  | EA                     | DR2                                      | DR2                         | 2        |
|                  | 06                 | Juniper Basin Sdg   | B                  | DR1                    | SS                                       | DR1                         | 2        |
| 07               | Potholes           | E                   | DR1                | DR1                    | DR1                                      | 2                           |          |
| 08               | Water Gulch        | A                   | RR2                | RR2                    | RR2                                      | 2                           |          |
| 09               | Sheep Rocks        | A                   | RR2                | DR2                    | DR2                                      | 2                           |          |
| 10               | Parks              | E                   | RR2                | RR2                    | RR2                                      | 2                           |          |
| 15               | Moritz             | D                   | DF                 | DR2                    | EXO                                      | 1                           |          |
| 16               | McGetrick          | B                   | RR2                | DR1                    | DR1                                      | 2                           |          |
| 17               | FFR                | B                   | FFR                | FFR                    | FFR                                      | 3                           |          |
| 0305             | 01                 | Willow Spring       | E                  | RR1                    | RR1                                      | RR1                         | 2        |
|                  | 02                 | Tables              | A                  | RR1                    | RR1                                      | RR1                         | 2        |
|                  | 03                 | Dugout-Bridge Gulch | E                  | RR1                    | RR1                                      | RR1                         | 2        |
|                  | 04                 | FFR                 | B                  | FFR                    | FFR                                      | FFR                         | 3        |
|                  | 05                 | Willow Spr Res Ex   | D                  | RR1                    | EXO                                      | EXO                         | 1        |
| ■0306            | 01                 | Sperry Creek        | E                  | RR4                    | DR1                                      | DR1                         | 2        |
|                  | 02                 | Indian Creek        | E                  | RR4                    | RR2                                      | DR1                         | 2        |
|                  | 03                 | Trail               | E                  | DR1                    | RR2                                      | DR1                         | 2        |
|                  | 04                 | Saddle Horse        | E                  | RR4                    | RR2                                      | DR1                         | 2        |
|                  | 05                 | Horse Camp          | A                  | SS                     | RR2                                      | DR1                         | 2        |



| Allotment Number | Pasture Number | Pasture Name       | Primary Objectives | Present Grazing System | EIS Preferred Alternative Grazing System | RPS Grazing System Decision | Comments |
|------------------|----------------|--------------------|--------------------|------------------------|--|-----------------------------|----------|
| 0307             | 06             | Antelope Swales    | B                  | RR4                    | RR2                                      | DR1                         | 2        |
|                  | 07             | Dinner Creek       | A                  | SS                     | DR1                                      | DR1                         | 2        |
|                  | 08             | Tims Peak          | B                  | SS                     | DR1                                      | DR1                         | 2        |
|                  | 09             | FFR                | B                  | FFR                    | FFR                                      | FFR                         | 3        |
|                  | 01             | Lower Field        | E                  | SS                     | DR1                                      | DR1                         | 2        |
|                  | 02             | Upper Field        | A                  | DR1                    | DR1                                      | DR1                         | 2        |
| 0400             | 03             | Private            | B                  | DR1                    | DR1                                      | DR1                         | 2        |
|                  | 04             | FFR                | B                  | FFR                    | FFR                                      | FFR                         |          |
|                  | 05             | Wildhorse Basin Ex | D                  | DR1                    | DR1                                      | DR1                         | 2        |
|                  | 06             | Big Swales Res Ex  | D                  | SS                     | SS                                       | SS                          | 2        |
|                  | 101            | Callahan           | E                  | DR4                    | DR4                                      | DR4                         | 2        |
|                  | 102            | Little Valley Sdg  | B                  | SF                     | SS                                       | SS                          | 2        |
| 0400             | 103            | Winter Spr Sdg     | E                  | SR                     | SS                                       | SS                          | 2        |
|                  | 104            | Hunter             | B                  | DR4                    | DR4                                      | DR4                         | 2        |
|                  | 105            | Freezeout          | E                  | DR4                    | DR4                                      | DR4                         | 2        |
|                  | 106            | Drip Springs       | A                  | SS                     | DR4                                      | DR4                         | 2        |
|                  | 107            | FFR                | A                  | FFR                    | FFR                                      | FFR                         |          |
|                  | 108            | Chukar             | A                  | DR4                    | DR2                                      | DR2                         | 2        |
| 0400             | 109            | Keeney Creek       | D                  | DR4                    | DR2                                      | DR2                         | 2, 1     |
|                  | 110            | Winter Rip         | D                  | SF                     | DR2                                      | DR2                         | 1        |
|                  | 111            | Callahan Spr Rip   | D                  | EXO                    | EXO                                      | EXO                         | 3        |
|                  | 112            | East Harper        | D                  | EXO                    | EXO                                      | EXO                         |          |
|                  | 113            | Stacy Cabin Ex     | D                  | EXO                    | EXO                                      | EXO                         | 3        |
|                  | 114            | Cabin Springs Ex   | D                  | EXO                    | EXO                                      | EXO                         | 3        |
| 0400             | 301            | Cow Hollow Sdg     | B                  | DR1                    | DR1                                      | DR1                         | 2        |
|                  | 302            | Rock Creek         | A                  | DR1                    | DR1                                      | DR1                         | 2        |
|                  | 303            | Sagebrush          | A                  | DR4                    | DR4                                      | DR4                         | 2        |
|                  | 304            | Ryefield Sdg       | E                  | DR4                    | DR4                                      | DR4                         | 2        |
|                  | 305            | Grassy Sdg         | B                  | DR4                    | DR4                                      | DR4                         | 2        |
|                  | 306            | Grassy Mtn         | B                  | DR1                    | DR1                                      | DR1                         | 2        |
| 0400             | 307            | FFR                | A                  | FFR                    | FFR                                      | FFR                         |          |
|                  | 308            | Mud Springs Ex     | D                  | EXO                    | EXO                                      | EXO                         |          |
|                  | 309            | Sage Res Ex        | D                  | EXO                    | EXO                                      | EXO                         |          |
|                  | 310            | Rock Creek Rip     | D                  | DR1                    | EXO                                      | EXO                         | 1        |
|                  | 311            | Ryefield Res Ex    | D                  | EXO                    | EXO                                      | EXO                         |          |
|                  | 312            | Twin Springs Ex    | D                  | EXO                    | EXO                                      | EXO                         |          |
| 0400             | 313            | Littlewin Res Ex   | D                  | DR1                    | EXO                                      | EXO                         | 1        |
|                  | 314            | N Grass Mtn Res Ex | D                  | DR4                    | EXO                                      | EXO                         | 1        |
|                  | 401            | Double Mtn         | A                  | SF                     | DR1                                      | DR1                         | 2        |
|                  | 402            | Sand Hollow Sdg    | E                  | SS                     | DR1                                      | DR1                         | 2        |
|                  | 403            | Canyon             | A                  | DR1                    | SS                                       | SS                          | 2        |
|                  | 404            | Kane Springs       | A                  | DR1                    | SS                                       | SS                          | 2        |
| 0400             | 405            | Freezeout Lake     | B                  | DR1                    | DR1                                      | DR1                         | 2        |
|                  | 408            | Hurley Spring      | B                  | DR4                    | DR4                                      | DR4                         | 2        |
|                  | 410            | Dry Creek Rip      | D                  | DR4                    | DR2                                      | DR2                         | 1, 2     |
|                  | 411            | Kane Spr Res Ex    | D                  | EXO                    | EXO                                      | EXO                         | 3        |
|                  | 412            | Sponge Spr Ex      | D                  | DR1                    | EXO                                      | EXO                         | 1        |
|                  | 413            | Flowing Wells Ex   | D                  | EXO                    | EXO                                      | EXO                         |          |
| 0400             | 414            | Dm Spring Ex       | D                  | EXO                    | EXO                                      | EXO                         |          |
|                  | 415            | Freezesum Res      | D                  | DR1                    | EXO                                      | EXO                         | 1        |
|                  | 417            | Morton Dm          | A                  | SF                     | DR1                                      | DR1                         | 2        |
|                  | 418            | Russell FFR        | A                  | FFR                    | FFR                                      | FFR                         |          |
|                  | 419            | Dm Res             | D                  | SF                     | EXO                                      | EXO                         | 1        |
|                  | 501            | Dry Creek Buttes   | A                  | DR1                    | DR1                                      | DR1                         | 2        |
| 0400             | 502            | West Juniper       | E                  | DR1                    | DR1                                      | DR1                         | 2        |
|                  | 503            | Schaeffer          | B                  | DR1                    | DR1                                      | DR1                         | 2        |
|                  | 505            | McNulty            | E                  | DF                     | DR1                                      | DR1                         | 2        |
|                  | 506            | Hub Field          | A                  | SF                     | SF                                       | SF                          | 2        |
|                  | 507            | Mud Flat FFR       | A                  | FFR                    | FFR                                      | FFR                         |          |
|                  | 508            | Antelope Flat Sdg  | E                  | DR1                    | DR1                                      | DR1                         | 2        |
| 0400             | 509            | Juniper Cr Res     | D                  | DR1                    | EXO                                      | EXO                         | 1        |
|                  | 601            | Cedar Mtn          | B                  | DR1                    | DR1                                      | DR1                         | 2        |
|                  | 602            | Willow Spring      | D                  | WO                     | WO                                       | WO                          | 2, 3     |
|                  | 603            | Red Butte          | B                  | WO                     | WO                                       | WO                          | 2        |
|                  | 604            | Rust FFR           | A                  | FFR                    | FFR                                      | FFR                         |          |



| Allotment Number | Pasture Number | Pasture Name          | Primary Objectives | Present Grazing System | EIS Preferred Alternative Grazing System | RPS Grazing System Decision | Comments |
|------------------|----------------|-----------------------|--------------------|------------------------|--|-----------------------------|----------|
| 0407             | 01             | N Vines Hill          | B                  | DR1                    | DR1                                      | DR1                         | 2        |
|                  | 02             | E Vines Hill          | A                  | RR4                    | RR4                                      | RR4                         | 2        |
|                  | 03             | S Vines Hill          | B                  | DR1                    | DR1                                      | DR1                         | 2        |
|                  | 04             | Rabbit Farm-Ltl Villy | B                  | DR4                    | DR4                                      | DR4                         | 2        |
|                  | 06             | Vine Hill Res EX      | D                  | EXO                    | EXO                                      | EXO                         | 2        |
| 0408             | 01             | Mitchell Butte        | A                  | SS                     | SS                                       | SF                          | 2        |
|                  | 02             | Butte Rip             | D                  | SS                     | EXO                                      | EXO                         | 1        |
| 0410             | 01             | Radar Hill            | A                  | DR2                    | DR2                                      | DR2                         | 2        |
|                  | 02             | Radar Sdg             | B                  | DR2                    | DR2                                      | DR2                         | 2        |
|                  | 03             | FFR                   | A                  | FFR                    | FFR                                      | FFR                         | 2        |
| ■0412<br>■0500   | 01             | Chalk Butte FFR       | A                  | EA                     | EA                                       | DR1                         | 2, 4     |
|                  | 301            | Tunnel Canyon         | E                  | DR1                    | DR1                                      | DR1                         | 2        |
|                  | 302            | Alkali                | A                  | SS                     | SS                                       | SS                          | 2        |
|                  | 303            | BAS                   | E                  | DR1                    | DR1                                      | DR1                         | 2        |
|                  | 304            | Board Corral          | B                  | DF                     | DR1                                      | DR1                         | 2        |
|                  | 305            | Wildhorse Basin       | B                  | DR3                    | DR3                                      | DR3                         | 2        |
|                  | 306            | Sheephead Sdg.        | B                  | SS                     | SS                                       | SS                          | 2        |
|                  | 307            | Camp Kettle           | D                  | DR1                    | SF                                       | SF                          | 2        |
|                  | 309            | Antelope              | B                  | DR3                    | DR3                                      | DR3                         | 2        |
|                  | 310            | McIntyre              | A                  | DR1                    | SF                                       | SF                          | 2        |
|                  | 311            | Saddle Butte          | A                  | DR1                    | DR1                                      | DR1                         | 2        |
|                  | 312            | Bannock               | A                  | DR1                    | DR1                                      | DR1                         | 2        |
|                  | 313            | Sulphur Spr Sdg       | B                  | SS                     | SS                                       | SS                          | 2        |
|                  | 315            | Riverside             | A                  | DR1                    | DR2                                      | DR2                         | 2        |
|                  | 316            | FFR                   | A                  | FFR                    | FFR                                      | FFR                         | 2        |
|                  | 317            | Saddle Butte Rip      | D                  | DR2                    | DR2                                      | DR2                         | 1, 2     |
|                  | 318            | Alkali Rip            | D                  | SS                     | EA                                       | EA                          | 1, 2     |
|                  | 319            | Board Corral Pit Ex   | D                  | EXO                    | EXO                                      | EXO                         |          |
|                  | 320            | Antelope Spr Ex       | D                  | EXO                    | EXO                                      | EXO                         |          |
|                  | 321            | Saddle Butte Rex      | D                  | DR1                    | EXO                                      | EXO                         | 1        |
|                  | 322            | McIntyre Res          | D                  | DR1                    | EXO                                      | EXO                         | 1        |
|                  | 323            | Pinnacle Res          | D                  | DR1                    | EXO                                      | EXO                         | 1        |
|                  | 324            | Cunningham Rex        | D                  | DR1                    | EXO                                      | EXO                         | 1        |
|                  | 325            | Bar Cross Basin Ex    | D                  | DR1                    | EXO                                      | EXO                         | 1        |
|                  | 326            | Leslie Gulch          | E                  | EA                     | EA                                       | EA                          | 2        |
|                  | 329            | Three Finger Ex       | C                  | EXO                    | EXO                                      | EXO                         |          |
|                  | 330            | Antelope Test Plot    | C                  | EXO                    | EXO                                      | EXO                         |          |
|                  | 331            | Leslie Gulch Plot     | C                  | EXO                    | EXO                                      | EXO                         |          |
|                  | 332            | Mahogany RNA          | C                  | EXO                    | EXO                                      | EXO                         |          |
|                  | 401            | Top Spray N           | A                  | DR2                    | DR1                                      | DR1                         | 2        |
|                  | 402            | Top Spray S           | A                  | DR2                    | DR1                                      | DR1                         | 2        |
|                  | 403            | McBride Creek         | A                  | DR2                    | DR1                                      | DR1                         | 2        |
|                  | 404            | Rockville Sdg N       | B                  | SS                     | DR1                                      | DR1                         | 2        |
|                  | 405            | Spring Cr Sdg         | B                  | SS                     | DR1                                      | DR1                         | 2        |
|                  | 406            | Rockville Sdg S       | B                  | SS                     | DR1                                      | DR1                         | 2        |
|                  | 407            | Ion                   | B                  | DR1                    | DR1                                      | DR1                         | 2        |
|                  | 408            | Falen Sdg             | E                  | SS                     | DR5                                      | DR5                         | 2        |
|                  | 409            | Spring Basin Sdg      | B                  | SS                     | SS                                       | SS                          | 2        |
|                  | 410            | Carter Cr Sdg         | B                  | SS                     | SS                                       | SS                          | 2        |
|                  | 411            | Shaleroak             | A                  | DR1                    | RR4                                      | RR4                         | 2        |
|                  | 412            | Old Maid Sdg N        | E                  | SS                     | SS                                       | SS                          | 2        |
|                  | 413            | Sagehen Basin         | A                  | DR1                    | RR4                                      | RR4                         | 2        |
|                  | 414            | Falon Spr Ex          | F                  | EXO                    | EXO                                      | EXO                         |          |
|                  | 415            | Strode Spr Ex         | F                  | EXO                    | EXO                                      | EXO                         |          |
|                  | 416            | Spring Mtn Sdg        | B                  | SS                     | SS                                       | SS                          | 2        |
|                  | 417            | Spring Mtn Nr         | A                  | DR1                    | DR1                                      | DR1                         | 2        |
|                  | 418            | Sheaville             | A                  | DR1                    | DR1                                      | DR1                         | 2        |
|                  | 419            | Old Maid S            | E                  | SS                     | SS                                       | SS                          | 2        |
|                  | 420            | Dog Creek Pit Ex      | D                  | EXO                    | EXO                                      | EXO                         |          |
|                  | 421            | Sticky Joe Sdg        | E                  | SS                     | SS                                       | SS                          | 2        |
|                  | 422            | MacKenzie FFR         | A                  | SS                     | SS                                       | FFR                         |          |
|                  | 423            | Carter Cr Rip         | D                  | SS                     | EA                                       | EA                          | 1, 2     |
|                  | 424            | Sagehen Rip           | D                  | DR1                    | EA                                       | EA                          | 1, 2     |
|                  | 501            | Blackrocks            | D                  | WO                     | WO                                       | WO                          | 2        |
|                  | 503            | Blue Canyon           | B                  | DR1                    | DR1                                      | DR1                         | 2        |



| Allotment Number | Pasture Number | Pasture Name         | Primary Objectives | Present Grazing System | EIS Preferred Alternative Grazing System | RPS Grazing System Decision | Comments |
|------------------|----------------|----------------------|--------------------|------------------------|--|-----------------------------|----------|
|                  | 504            | Spring Basin         | E                  | EA                     | SS                                       | SS                          | 2        |
|                  | 505            | McCain Spr Sdg       | E                  | DR1                    | DR1                                      | DR1                         | 2        |
|                  | 506            | Mahogany Mtn         | A                  | DF                     | DF                                       | DR                          | 2        |
|                  | 507            | Road Res             | B                  | DR1                    | DR4                                      | DR4                         | 2        |
|                  | 508            | P Plot               | B                  | DR1                    | DR4                                      | DR4                         | 2        |
|                  | 509            | Shellrock            | A                  | DR1                    | DR4                                      | DR4                         | 2        |
|                  | 510            | N Shellrock          | A                  | DR1                    | DR1                                      | DR1                         | 2        |
|                  | 511            | Fish Creek           | A                  | DR1                    | DR1                                      | DR1                         | 2        |
|                  | 512            | Tableland Annex      | B                  | DR1                    | DR1                                      | DR1                         | 2        |
|                  | 513            | Schnable Creek Sdg   | E                  | DR1                    | DR1                                      | DR1                         | 2        |
|                  | 514            | FFR                  | A                  | FFR                    | FFR                                      | FFR                         |          |
|                  | 515            | Hang Up Res Ex       | D                  | DR1                    | EXO                                      | EXO                         | 1        |
|                  | 516            | Schnable Res Ex      | D                  | DR1                    | EXO                                      | EXO                         | 1        |
|                  | 517            | McConnel Res Ex      | D                  | DR1                    | EXO                                      | EXO                         | 1        |
|                  | 518            | Ground Hog Ex        | D                  | EXO                    | EXO                                      | EXO                         |          |
| 0501             | 519            | Road Res Ex          | D                  | EXO                    | EXO                                      | EXO                         |          |
|                  | 520            | Hawk's Nest          | D                  | DR1                    | EXO                                      | EXO                         | 1        |
|                  | 521            | Wild Rose            | D                  | DR1                    | EXO                                      | EXO                         | 1        |
|                  | 524            | Circle Bar FFR       | A                  | FFR                    | FFR                                      | FFR                         |          |
|                  | 01             | East                 | E                  | DR1                    | DR1                                      | DR1                         | 2        |
|                  | 02             | West                 | E                  | DR1                    | DR1                                      | DR1                         | 2        |
| 0502             | 03             | Brown Butte          | I                  | EXO                    | EXO                                      | EXO                         |          |
| 0506             | 01             | River                | D                  | FFR                    | FFR                                      | FFR                         |          |
| 0601             | 01             | Birch Creek          | D                  | SS                     | SS                                       | SS                          | 2        |
|                  | 01             | Turnbull             |                    | DR4                    | DR4                                      | DR4                         | 5        |
|                  | 02             | Obenchain-Duck Butte |                    | DR1                    | DR1                                      | DR1                         | 5        |
| 0602             | 03             | FFR                  |                    | FFR                    | FFR                                      | FFR                         | 5        |
|                  | 01             | Westside-Rnd Mtn     |                    | DR1                    | DR1                                      | DR1                         | 5        |
|                  | 02             | Rockjack-Big Flat    |                    | SF                     | SF                                       | SF                          | 5        |
|                  | 03             | Northside            |                    | SS                     | SS                                       | SS                          | 5        |
|                  | 04             | Eastside             |                    | DR1                    | DR1                                      | DR1                         | 5        |
| 0603             | 05             | FFR                  |                    | FFR                    | FFR                                      | FFR                         | 5        |
|                  | 01             | Lower Swamp          | B                  | EA                     | RR1                                      | RR1                         |          |
|                  | 02             | Vischer              | B                  | RR4                    | RR1                                      | RR1                         |          |
|                  | 03             | Hickey               | B                  | RR4                    | RR4                                      | RR4                         |          |
|                  | 04             | Hughes               | B                  | DF                     | DF                                       | DR1                         |          |
|                  | 05             | Swamp-Big Flat       | B                  | DR4                    | DR4                                      | DR4                         |          |
| 0604             | 06             | Stockade             | B                  | DR1                    | DR1                                      | DR1                         |          |
|                  | 08             | Duck Pond            | B                  | DR1                    | DR1                                      | DR1                         |          |
|                  | 09             | FFR                  |                    | FFR                    | FFR                                      | FFR                         | 5        |
|                  | 01             | Turnbull Lake        |                    | EA                     | EA                                       | EA                          | 5        |
|                  | 02             | Little Lakes-Mustang |                    | DR1                    | DR1                                      | DR1                         | 5        |
|                  | 03             | Piute                |                    | DF                     | DF                                       | DF                          | 5        |
| 0605             | 05             | FFR                  |                    | FFR                    | FFR                                      | FFR                         | 5        |
|                  | 01             | North Heifer-Deadman | A                  | RR3                    | RR3                                      | RR3                         |          |
|                  | 02             | Jake Hughes          | B                  | DR1                    | DR1                                      | DR1                         |          |
|                  | 03             | Deadman              | B                  | SS                     | SS                                       | SS                          |          |
|                  | 04             | FFR                  | B                  | FFR                    | FFR                                      | FFR                         |          |
|                  |                | Lower                | B                  | SS                     | SS                                       | SS                          |          |
| 0701             | 05             | Homestead            | B                  | DR2                    | DR2                                      | DR2                         |          |
|                  | 01             | Sheepheads           | B                  | SS                     | SS                                       | DF                          |          |
|                  | 02             | Bone Cr Res Ex       | D                  | EXO                    | EXO                                      | EXO                         |          |
|                  | 03             | Rock Corral Sp Ex    | D                  | EXO                    | EXO                                      | EXO                         |          |
|                  | 04             | Sheepheads Plot      | D                  | EXO                    | EXO                                      | EXO                         |          |
| 0801             | 05             | W Ryegrass           | B                  | SS                     | DR5                                      | DR5                         |          |
|                  | 00             | Crooked Cr Sp Res Ex | D                  | EXO                    | EXO                                      | EXO                         |          |
|                  | 01             | South                | B                  | WO                     | EA                                       | EA                          |          |
|                  | 02             | Bowden Hills         | B                  | WO                     | WO                                       | WO                          |          |
|                  | 03             | North                | B                  | WO                     | WO                                       | WO                          |          |
|                  | 04             | Palomino Hills       | B                  | WO                     | SF                                       | SF                          |          |
|                  | 05             | East Ryegrass        | B                  | WO                     | DF                                       | DF                          |          |
|                  | 06             | BV Study Plot        | D                  | EXO                    | EXO                                      | EXO                         |          |
|                  | 08             | Bowden Guzzler Ex    | D                  | EXO                    | EXO                                      | EXO                         |          |
|                  | 09             | 4 Guzzler Exs        | D                  | EXO                    | EXO                                      | EXO                         |          |
| 0802             | 10             | FFR                  | B                  | FFR                    | FFR                                      | FFR                         |          |
|                  | 01             | Sand Gap             | B                  | WO                     | WO                                       | WO                          |          |



| Allotment Number | Pasture Number | Pasture Name         | Primary Objectives | Present Grazing System | EIS Preferred Alternative Grazing System | RPS Grazing System Decision | Comments |
|------------------|----------------|----------------------|--------------------|------------------------|--|-----------------------------|----------|
| 0901             | 01             | West                 | H                  | DR1                    | DR4                                      | DR4                         |          |
|                  | 02             | East                 | B                  | DR1                    | DR4                                      | DR4                         |          |
| 0902             | 01             | Riley Horn           | B                  | DR1                    | DR1                                      | DR1                         |          |
|                  | 02             | Mud Flat             | A                  | DR1                    | DR1                                      | DR1                         |          |
|                  | 05             | Bogus Creek          | A                  | DR1                    | DR1                                      | DR1                         |          |
|                  | 06             | Navaro V             | B                  | DR1                    | DR1                                      | DR1                         |          |
|                  | 07             | Owyhee Canyon BC     | B                  | DR1                    | DR1                                      | DR1                         |          |
|                  | 08             | West Crater BC       | B                  | DR1                    | DR1                                      | DR1                         |          |
|                  | 09             | Clarks Butte         | B                  | DR1                    | DR1                                      | DR1                         |          |
|                  | 10             | Dog Lake E & W       | B                  | DR2                    | RR4                                      | RR4                         |          |
|                  | 12             | Arock                | A                  | DR1                    | DR1                                      | DR1                         |          |
|                  | 13             | Owyhee Butte #2      | B                  | DR1                    | DR1                                      | DR1                         |          |
|                  | 16             | Owyhee Butte #3      | B                  | DR1                    | DR1                                      | DR1                         |          |
|                  | 17             | Owyhee Butte #4, #5  | B                  | DR1                    | DR1                                      | DR1                         |          |
|                  | 18             | Owyhee Butte #1      | B                  | DR1                    | DR1                                      | DR1                         |          |
|                  | 19             | Lower Butte Lower Fd | D                  | EXO                    | EXO                                      | EXO                         |          |
|                  | 20             | Lodge Annex E & W    | B                  | RR4                    | RR4                                      | RR4                         |          |
|                  | 21             | Owyhee Butte #3 Ex   | D                  | EXO                    | EXO                                      | EXO                         |          |
|                  | 22             | Mud Flat Ex          | D                  | EXO                    | EXO                                      | EXO                         |          |
|                  | 23             | Bogus Cr Ex          | D                  | EXO                    | EXO                                      | EXO                         |          |
|                  | 24             | Navaro V Guzzler Ex  | D                  | EXO                    | EXO                                      | EXO                         |          |
|                  | 25             | Bogus Lake Ex        | D                  | EXO                    | EXO                                      | EXO                         |          |
|                  | 26             | FFR                  | B                  | FFR                    | FFR                                      | FFR                         |          |
|                  | 27             | Owyhee Butte BB Ex   | E                  | EXO                    | EXO                                      | EXO                         |          |
| 0903             | 01             | Hooker Creek N       | B                  | DR1                    | DR1                                      | DR1                         |          |
|                  | 02             | Hooker Creek S       | B                  | DR1                    | DR1                                      | DR1                         |          |
|                  | 03             | Jordan Valley N      | B                  | DR5                    | DR5                                      | DR5                         |          |
|                  | 04             | Jordan Valley S      | B                  | DR5                    | DR5                                      | DR5                         |          |
|                  | 05             | Big Ridge N          | B                  | DR1                    | DR1                                      | DR1                         |          |
|                  | 06             | Barlow BC            | H                  | DR1                    | DR1                                      | DR1                         |          |
|                  | 07             | Cowgill              | B                  | DR1                    | DR1                                      | DR1                         |          |
|                  | 08             | Boulder              | B                  | DR1                    | DR1                                      | DR1                         |          |
|                  | 09             | Downey Canyon        | B                  | DR1                    | DR1                                      | DR1                         |          |
|                  | 10             | Little Sandy W       | B                  | DR2                    | DR2                                      | DR2                         |          |
|                  | 11             | Little Sandy NE      | H                  | DR1                    | DR1                                      | DR1                         |          |
|                  | 12             | Little Sandy S       | B                  | DR1                    | DR1                                      | DR1                         |          |
|                  | 13             | Lava                 | B                  | SS                     | DR1                                      | DR1                         |          |
|                  | 14             | Big Ridge S          | B                  | DR1                    | DR1                                      | DR1                         |          |
|                  | 15             | Barlow Ex            | D                  | EXO                    | EXO                                      | EXO                         |          |
|                  | 16             | L Sandy Sp Ex        | D                  | EXO                    | EXO                                      | EXO                         |          |
|                  | 17             | FFR                  | B                  | FFR                    | FFR                                      | FFR                         |          |
|                  | 18             | Barlow Ex            | D                  | EXO                    | EXO                                      | EXO                         |          |
| 0904             | 01             | Bogus Creek          | B                  | FFR                    | FFR                                      | FFR                         |          |
| 0905             | 01             | Oliver               | H                  | DF                     | DF                                       | DR2                         |          |
| 0907             | 01             | Morcum               | B                  | FFR                    | FFR                                      | FFR                         |          |
| 1001             | 01             | Bull Pasture         | D                  | EXO                    | EXO                                      | EXO                         |          |
|                  | 02             | Rock Creek Sdg       | B                  | DR1                    | DR1                                      | DR1                         |          |
|                  | 03             | Tankey               | B                  | RR4                    | RR4                                      | RR4                         |          |
|                  | 04             | Noon                 | B                  | DR1                    | DR1                                      | DR1                         |          |
|                  | 05             | Little Grassy        | B                  | RR4                    | RR4                                      | RR4                         |          |
|                  | 07             | Monument             | B                  | DR1                    | DR1                                      | DR1                         |          |
|                  | 08             | Dry Creek            | B                  | RR4                    | RR4                                      | RR4                         |          |
|                  | 09             | Rome #1              | B                  | RR4                    | RR4                                      | RR4                         |          |
|                  | 10             | Rome #2              | B                  | RR4                    | RR4                                      | RR4                         |          |
|                  | 11             | Rome #3              | B                  | RR4                    | RR4                                      | RR4                         |          |
|                  | 12             | Rome #4              | B                  | DR1                    | DR1                                      | DR1                         |          |
|                  | 13             | Round Mtn            | B                  | DR1                    | DR1                                      | DR1                         |          |
|                  | 14             | Rome #5              | B                  | DR1                    | DR1                                      | DR1                         |          |
|                  | 15             | Pinto Horse          | B                  | DR1                    | DR1                                      | DR1                         |          |
|                  | 16             | Noon Res Ex          | D                  | EXO                    | EXO                                      | EXO                         |          |
|                  | 17             | Rock Cr Res Ex       | D                  | EXO                    | EXO                                      | EXO                         |          |
|                  | 18             | FFR                  | B                  | FFR                    | FFR                                      | FFR                         |          |
| ■ 1002           | 01             | Antelope W           | B                  | DR1                    | DR1                                      | DR1                         |          |
|                  | 02             | Antelope E           | B                  | DR2                    | DR2                                      | DR2                         |          |
|                  | 03             | Sheep Spring Sdg     | B                  | DR1                    | DR1                                      | DR1                         |          |



| Allotment Number | Pasture Number | Pasture Name         | Primary Objectives | Present Grazing System | EIS Preferred Alternative Grazing System | RPS Grazing System Decision | Comments |
|------------------|----------------|----------------------|--------------------|------------------------|--|-----------------------------|----------|
|                  | 04             | Soldier Creek SE     | B                  | DR1                    | DR1                                      | DR1                         |          |
|                  | 05             | Soldier Creek E      | B                  | SS                     | SS                                       | DF1                         |          |
|                  | 06             | Soldier Cr Sdg W     | B                  | SS                     | SS                                       | DF1                         |          |
|                  | 07             | Greeley North        | B                  | DR1                    | DR1                                      | DR1                         |          |
|                  | 08             | Greeley South        | B                  | DR2                    | DR2                                      | DR2                         |          |
|                  | 09             | Rock                 | B                  | DR1                    | DR1                                      | DR1                         |          |
|                  | 10             | Black Butte N        | B                  | SS                     | SS                                       | DR1                         |          |
|                  | 11             | Black Butte S        | B                  | SS                     | SS                                       | DR1                         |          |
|                  | 12             | Parsnip Peak         | H                  | DR1                    | DR1                                      | DR1                         |          |
|                  | 13             | Antelope Flat        | H                  | SS                     | SS                                       | SS                          |          |
|                  | 15             | Three C Ex           | D                  | EXO                    | EXO                                      | EXO                         |          |
|                  | 16             | Parsnip Pk Ex        | D                  | EXO                    | EXO                                      | EXO                         |          |
|                  | 17             | Antelope Res Ex      | D                  | EXO                    | EXO                                      | EXO                         |          |
|                  | 18             | Tom Skinner Res Ex   | D                  | EXO                    | EXO                                      | EXO                         |          |
|                  | 19             | Cantor Corral Pit Ex | D                  | EXO                    | EXO                                      | EXO                         |          |
|                  | 20             | Antelope Rim Sp Ex   | D                  | EXO                    | EXO                                      | EXO                         |          |
|                  | 21             | Gulch Pit Ex         | D                  | EXO                    | EXO                                      | EXO                         |          |
|                  | 22             | Cantor Corral Sp Ex  | D                  | EXO                    | EXO                                      | EXO                         |          |
|                  | 23             | Hicks Canyon Res Ex  | D                  | EXO                    | EXO                                      | EXO                         |          |
|                  | 24             | Bluch Sp Ex          | D                  | EXO                    | EXO                                      | EXO                         |          |
|                  | 25             | Round Peak Sp Ex     | D                  | EXO                    | EXO                                      | EXO                         |          |
|                  | 26             | Sagehen Ex           | D                  | EXO                    | EXO                                      | EXO                         |          |
| ■ 1003           | 27             | FFR                  | B                  | FFR                    | FFR                                      | FFR                         |          |
|                  | 01             | Brickey Springs      | B                  | DR4                    | DR4                                      | DR4                         |          |
|                  | 02             | Wildcat              | A                  | DR4                    | DR4                                      | DR4                         |          |
|                  | 03             | Coffee Pot           | H                  | DR1                    | DR1                                      | DR1                         |          |
|                  | 04             | Chicken Creek        | D&H                | DR2                    | DR2                                      | DR2                         |          |
| ■ 1004           | 05             | FFR                  | B                  | FFR                    | FFR                                      | FFR                         |          |
|                  | 01             | Horse Ridge S        | B                  | DR1                    | DR1                                      | DR1                         |          |
|                  | 02             | Indian Canyon W      | H                  | DR1                    | DR1                                      | DR1                         |          |
|                  | 03             | Indian Canyon E      | H                  | DR1                    | DR1                                      | DR1                         |          |
|                  | 04             | Fiat Creek           | B                  | DR1                    | DR1                                      | DR1                         |          |
|                  | 05             | Rim Basin Sdg        | B                  | DR1                    | DR1                                      | DR1                         |          |
|                  | 06             | Jaca Sdg E           | B                  | DR2                    | DR2                                      | DR2                         |          |
|                  | 07             | Willow Creek N       | B                  | DR1                    | DR1                                      | DR1                         |          |
|                  | 08             | Frank Mahar BC       | B                  | DR1                    | DR1                                      | DR1                         |          |
|                  | 09             | Black Butte          | B                  | DR1                    | DR1                                      | DR1                         |          |
|                  | 10             | Gluch Sdg S          | B                  | DR1                    | DR1                                      | DR1                         |          |
|                  | 11             | Gluch Seeding N      | B                  | SS                     | SS                                       | SS                          |          |
|                  | 12             | Willow Cr W          | H                  | DR1                    | DR1                                      | DR1                         |          |
|                  | 13             | Willow Creek E       | B                  | DR1                    | DR1                                      | DR1                         |          |
|                  | 14             | Horse Ridge N        | B                  | SS                     | SS                                       | SS                          |          |
|                  | 15             | Jaca Sdg W           | B                  | DR1                    | DR1                                      | DR1                         |          |
|                  | 16             | Horse Ridge E        | A                  | DR1                    | DR1                                      | DR1                         |          |
|                  | 17             | Castro Pit Ex        | D                  | EXO                    | EXO                                      | EXO                         |          |
|                  | 18             | Castro Sp Ex         | D                  | EXO                    | EXO                                      | EXO                         |          |
| 1005             | 19             | FFR                  | B                  | FFR                    | FFR                                      | FFR                         |          |
|                  | 01             | East                 | B                  | DR1                    | DR1                                      | DR1                         |          |
|                  | 02             | West                 | B                  | SS                     | SS                                       | SS                          |          |
|                  | 03             | Mud Flat             | B                  | SS                     | SS                                       | SS                          |          |
| 1006             | 04             | FFR                  | B                  | FFR                    | FFR                                      | FFR                         |          |
| 1007             | 01             | Eiguren              | B                  | FFR                    | FFR                                      | FFR                         |          |
| 1101             | 02             | Arrigold FFR         | B                  | FFR                    | FFR                                      | FFR                         |          |
|                  | 02             | China Gulch Sdgs     | B                  | DR2                    | DR2                                      | DR2                         |          |
|                  | 04             | Dry Creek Native     | B                  | DR1                    | DR1                                      | RR1                         |          |
|                  | 05             | Indian Fort          | B                  | DR1                    | DR1                                      | DR1                         |          |
|                  | 06             | Skull Creek          | B                  | DR1                    | DR1                                      | DR1                         |          |
|                  | 07             | Eastside             | B                  | DR1                    | DR1                                      | DR1                         |          |
|                  | 08             | Rome South           | B                  | DR2                    | DR2                                      | DR2                         |          |
|                  | 09             | Rome North           | D                  | EXO                    | EXO                                      | EXO                         |          |
|                  | 10             | Crows Nest Res Ex    | D                  | EXO                    | EXO                                      | EXO                         |          |
|                  | 11             | Hardin Eps Ex        | D                  | EXO                    | EXO                                      | EXO                         |          |
|                  | 12             | Dry Creek Ex         | D                  | EXO                    | EXO                                      | EXO                         |          |
|                  | 13             | FFR                  | B                  | FFR                    | FFR                                      | FFR                         |          |
|                  |                | Owyhee Springs Res   | D                  | EXO                    | EXO                                      | EXO                         |          |



| Allotment Number | Pasture Number | Pasture Name        | Primary Objectives | Present Grazing System | EIS Preferred Alternative Grazing System | RPS Grazing System Decision | Comments |
|------------------|----------------|---------------------|--------------------|------------------------|--|-----------------------------|----------|
| 1102             | 01             | Ambrose Maher       | B&D                | SS                     | SS                                       | SS                          |          |
| 1103             | 01             | Jackies Butte       | B                  | WO                     | WO                                       | WO                          |          |
| ■ 1201           | 01             | Frenchie North      | B                  | EA                     | EA                                       | EA                          |          |
|                  | 02             | Twelve Mile Sdg     | B                  | SF                     | SF                                       | SF                          |          |
|                  | 03             | Whitehorse N Sdg    | D                  | RR2                    | RR2                                      | RR2                         |          |
|                  | 05             | Dool-Jug            | H&D                | DF                     | DR1                                      | DR1                         |          |
|                  | 06             | Green Ponds         | D                  | DF                     | DR1                                      | DR1                         |          |
|                  | 07             | Whitehorse-Dry Cr   | D                  | DR                     | DR1                                      | DR1                         |          |
|                  | 09             | V Pasture           | D                  | DF                     | DR1                                      | DR1                         |          |
|                  | 10             | Ore Canyon BC       | B                  | DR1                    | DR1                                      | DR1                         |          |
|                  | 11             | Ore Canyon Sdg      | B                  | DR1                    | DR1                                      | DR1                         |          |
|                  | 12             | Schoolhouse Sdg     | B                  | DR1                    | DR1                                      | DR1                         |          |
|                  | 13             | Etchart Sdg         | H                  | WO                     | DF                                       | DF                          |          |
|                  | 14             | Jaca Sdg            | B                  | SF                     | SF                                       | SF                          |          |
|                  | 15             | McDermitt           | B                  | EA                     | EA                                       | EA                          |          |
|                  | 16             | Buckbrush           | B                  | SF                     | SF                                       | SF                          |          |
|                  | 17             | Angel Cryn Sdg      | B                  | SF                     | SF                                       | SF                          |          |
|                  | 18             | Angel Cryn Native   | B                  | DF                     | DF                                       | DF                          |          |
|                  | 19             | Blue Mountain       | B                  | SS                     | SS                                       | SS                          |          |
| 1301             | 01             | Battle Cr N         | B                  | EA                     | EA                                       | EA                          |          |
|                  | 02             | Battie Cr S         | B                  | EA                     | EA                                       | EA                          |          |
|                  | 03             | Woolhawk            | B                  | DR1                    | DR1                                      | DR1                         |          |
|                  | 04             | Battle Mtn          | B                  | DR1                    | DR1                                      | DR1                         |          |
|                  | 05             | Rattlesnake         | B                  | DR1                    | DR1                                      | DR1                         |          |
|                  | 06             | Deer Cr Sp          | B                  | EXO                    | EXO                                      | EXO                         |          |
|                  | 07             | FFR                 | B                  | FFR                    | FFR                                      | FFR                         |          |
|                  |                | Joe Spg Ex          | D                  | EXO                    | EXO                                      | EXO                         |          |
| 1302             | 01             | Battle Mtn-Rittlsnk | B                  | DR1                    | DR1                                      | DR1                         |          |
|                  | 03             | Antelope Flat       | H                  | EA                     | EA                                       | EA                          |          |
| 1303             | 01             | Bankofier Sdg       | B                  | SF                     | SF                                       | SF                          |          |
|                  | 02             | High Peak           | B                  | DR4                    | DR4                                      | DR4                         |          |
|                  | 03             | Hanson Flat N       | B                  | SS                     | SS                                       | SS                          |          |
|                  | 04             | Hanson Flat S       | B                  | DR1                    | DR1                                      | DR1                         |          |
|                  | 05             | FFR                 | B                  | FFR                    | FFR                                      | FFR                         |          |
| 1304             | 01             | The Breaks          | B                  | DR1                    | DR1                                      | DR1                         |          |
|                  | 02             | Andy Fife           | A                  | DR2                    | DR2                                      | DR2                         |          |
|                  | 03             | Lazy T              | B                  | DR2                    | DR2                                      | DR2                         |          |
| 1305             | 01             | Beber Sdg           | B                  | EA                     | EA                                       | EA                          |          |
|                  | 02             | Winter Area N       | A                  | EA                     | EA                                       | EA                          |          |
|                  | 03             | Bull Creek Sdg      | B                  | EA                     | EA                                       | EA                          |          |
|                  | 06             | Chimney Creek       | B                  | DR1                    | DR1                                      | DR1                         |          |
|                  | 07             | Eiguren             | B                  | DR1                    | DR1                                      | DR1                         |          |
|                  | 08             | Rattlesnk #2 Res Ex | D                  | EXO                    | EXO                                      | EXO                         |          |
|                  | 09             | L Grassy Guzzler Ex | D                  | EXO                    | EXO                                      | EXO                         |          |
|                  | 10             | Chimney Guzzler Ex  | D                  | EXO                    | EXO                                      | EXO                         |          |
|                  |                | FFR                 | B                  | FFR                    | FFR                                      | FFR                         |          |
| 1306             | 00             | Coyote Holes Res Ex | D                  | EXO                    | EXO                                      | EXO                         |          |
|                  | 01             | Peacock             | B                  | RR4                    | RR4                                      | RR4                         |          |
|                  | 02             | Twin Springs        | B                  | RR4                    | RR4                                      | RR4                         |          |
|                  | 03             | Sacramento Hill     | B                  | RR4                    | RR4                                      | RR4                         |          |
|                  | 05             | Starvation Sdg      | B                  | DR1                    | DR1                                      | DR1                         |          |
|                  | 06             | Horse Hill          | B                  | DF                     | DF                                       | DF                          |          |
|                  | 07             | Lorribeau Holding   | B                  | DF                     | DF                                       | DF                          |          |
|                  | 08             | Scmnto Hill Test Ex | D                  | EXO                    | EXO                                      | EXO                         |          |
|                  | 09             | Peacock Ex          | D                  | EXO                    | EXO                                      | EXO                         |          |
|                  | 10             | Bell Spr Ex         | D                  | EXO                    | EXO                                      | EXO                         |          |
|                  |                | FFR                 | B                  | FFR                    | FFR                                      | FFR                         |          |
| 1307             | 01             | Diamond Basin       | B                  | EA                     | DR1                                      | DR1                         |          |
|                  | 02             | Steer Canyon Sdg    | B                  | DR5                    | DR1                                      | DR1                         |          |
|                  | 03             | Pole Creek          | A                  | DR1                    | DR1                                      | DR1                         |          |
|                  | 04             | Louse Canyon        | D                  | DR1                    | RR4                                      | RR4                         |          |
|                  | 06             | Frenchman Creek     | B                  | EA                     | EA                                       | EA                          |          |
|                  | 07             | Indian Spr Ex       | D                  | EXO                    | EXO                                      | EXO                         |          |
|                  | 08             | W Little Owyhee Ex  | D                  | EXO                    | EXO                                      | EXO                         |          |
|                  | 09             | Steer Cryn Test Ex  | D                  | EXO                    | EXO                                      | EXO                         |          |



| Allotment Number | Pasture Number | Pasture Name       | Primary Objectives | Present Grazing System | EIS Preferred Alternative Grazing System | RPS Grazing System Decision | Comments |
|------------------|----------------|--------------------|--------------------|------------------------|--|-----------------------------|----------|
| 1308             | 10             | FFR                | B                  | FFR                    | FFR                                      | FFR                         |          |
|                  | 11             | Jeff Res           | B                  | DR1                    | EXO                                      | EXO                         |          |
|                  | 12             | Louse Cryn Rip     | B                  | DR1                    | RR4                                      | RR4                         |          |
|                  | 01             | Ten Mile Sdg       | B                  | SS                     | SS                                       | SS                          |          |
|                  | 02             | McDermitt Landfill | D                  | EXO                    | EXO                                      | EXO                         |          |
| 1401             | 01             | Spring-Bull Flat   | A                  | SS                     | SS                                       | SS                          |          |
|                  | 02             | North              | B                  | EA                     | EA                                       | EA                          |          |
|                  | 03             | W Little Owyhee Ex | D                  | EXO                    | EXO                                      | EXO                         |          |
|                  | 04             | Junction Res       | D                  | SS                     | EXO                                      | EXO                         |          |
| 1402             |                | North              | A                  |                        | RR4                                      | RR4                         |          |
|                  |                | South              | A                  |                        | SS                                       | DR2                         |          |
|                  |                | Tri-State          | B                  |                        | EA                                       | DR2                         |          |

## Key

### Primary Objectives

- A Improve ecological condition
- B Maintain ecological condition
- C Study plot
- D Improve riparian habitat
- E Maintain or improve winter range for mule deer and/or antelope
- F Wildlife enclosure
- G Increase availability of livestock forage
- H Reverse downward trend

### Grazing System Yearly Sequence of Use

- WO Winter use every year
- SS Use during critical growth period every year
- UNA Inaccessible or unallotted
- EXO Exclusion
- EX2 Exclusion with use by wild horses
- EA Early spring every year

### Grazing System Yearly Sequence of Use

- SF EA/DF every year
- DF Use after seed ripe every year
- DR1 1 year SS/1 year DF
- DR2 1 year EA/1 year DF
- DR3 1 year SS/1 year winter
- DR4 1 year EA or SS/2 year DF
- RR1 1 year SS/1 year DF/1 year rest
- RR2 1 year SS/1 year rest
- RR3 2 or 3 years SS/1 year rest
- RR4 1 or 2 years early spring/1 year rest

### Comments

1. Grazing system dependent on project implementation or other work requiring funding not now available.
2. Consultation continuing.
3. Erroneously shown as grazing system in EIS - should be fenced federal range or enclosure
4. To be combined with allotment 0500.
5. State exchange to be consummated in near future: no change anticipated.

- Improve (I) Category allotments.



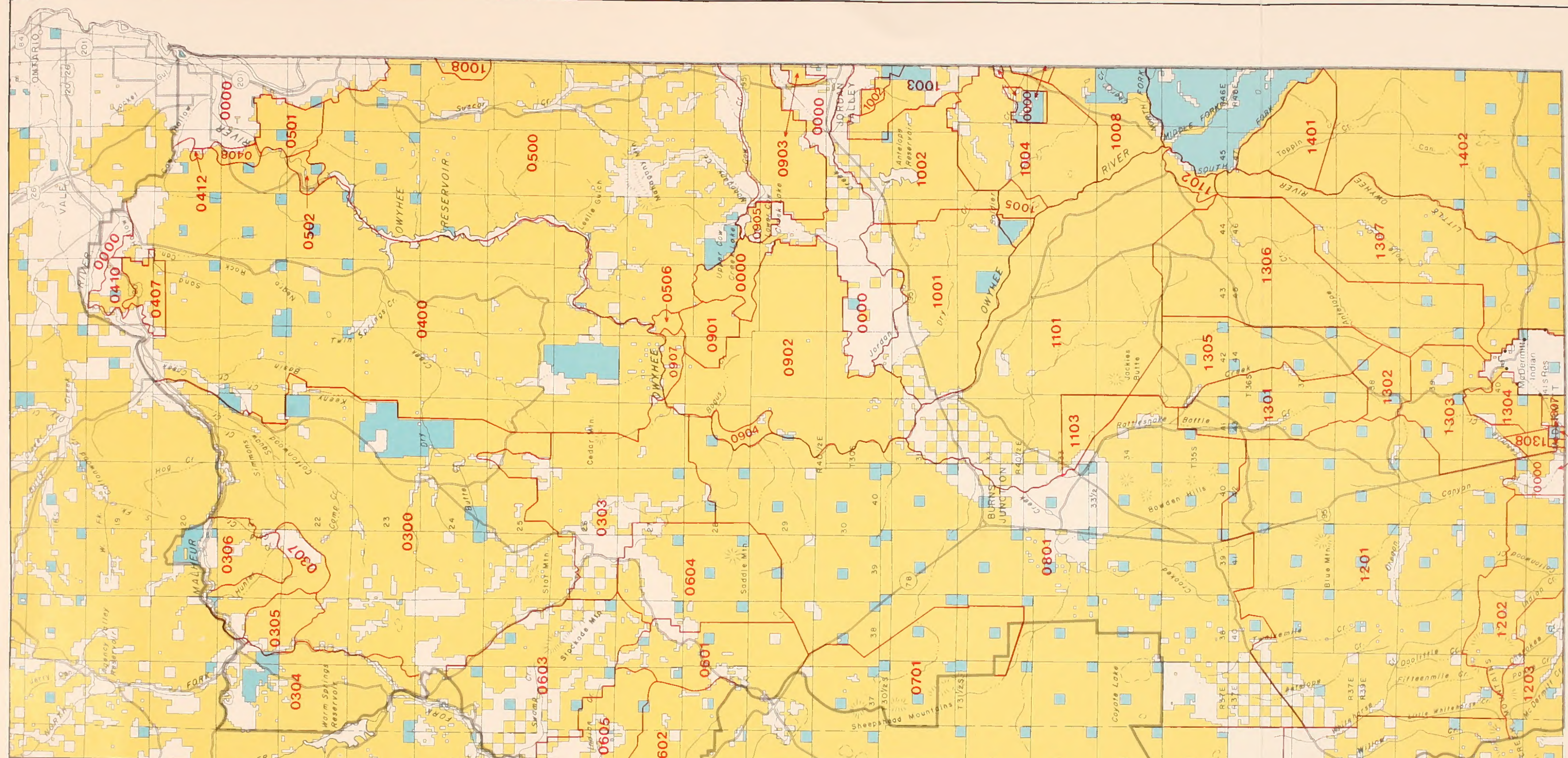
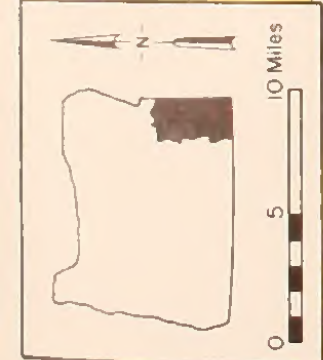
## Appendix 3 - Proposed Range Improvements

| Allot. No. | Allotment Name | B/C Ratio | Initial <sup>1</sup> Ranking | Cost/000 Dollars | Internal Rate of Return | Fence Miles | Spring Dev. | Pipe Miles | Wells | Reser-voirs | Water Holes | Brctl Seed Acres | Bctl Only Acres | Seed Only Acres |
|------------|----------------|-----------|------------------------------|------------------|-------------------------|-------------|-------------|------------|-------|-------------|-------------|------------------|-----------------|-----------------|
| ■ 0300     | Skull Springs  | 1.2       | 4                            | 200              | 9.8                     | 0.0         | 9           | 0.0        | 0     | 30          | 0           | 0                | 2,920           | 1,020           |
| 0303       | Turnbull Lake  | 1.1       | 7                            | 117              | 9.4                     | 0.0         | 2           | 0.0        | 0     | 9           | 0           | 0                | 20,056          | 0               |
| ■ 0304     | Black Butte    | 1.2       | 5                            | 44               | 9.8                     | 1.0         | 2           | 0.0        | 0     | 4           | 0           | 0                | 2,240           | 0               |
| 0305       | Bridge Creek   | 1.3       | 8                            | 32               | 12.9                    | 0.0         | 1           | 0.0        | 0     | 4           | 0           | 0                | 3,240           | 0               |
| ■ 0306     | Jonesboro      | 0.9       | 6                            | 52               | 6.7                     | 0.0         | 2           | 0.0        | 0     | 10          | 0           | 0                | 0               | 0               |
| ■ 0307     | Boney Basin    | 2.8       | 1                            | 7                | 17.3                    | 0.0         | 1           | 0.0        | 0     | 1           | 0           | 0                | 0               | 0               |
| ■ 0400     | Harper Basin   | 1.3       | 3                            | 446              | 11.4                    | 11.0        | 12          | 0.0        | 0     | 11          | 0           | 3,360            | 52,918          | 0               |
| ■ 0500     | Mahogany       | 1.1       | 2                            | 529              | 9.1                     | 10.0        | 21          | 0.0        | 0     | 12          | 0           | 0                | 45,460          | 3,000           |
| 0501       | Blackjack      | 1.9       | 9                            | 12               | 16.3                    | 0.0         | 1           | 0.0        | 0     | 2           | 0           | 0                | 0               | 0               |
| 0603       | McEwen         | 1.5       | 13                           | 37               | 16.9                    | 0.0         | 0           | 0.0        | 0     | 9           | 0           | 0                | 0               | 0               |
| 0701       | Sheepheads     | 1.3       | 16                           | 120              | 11.5                    | 0.0         | 1           | 5.0        | 0     | 16          | 0           | 0                | 0               | 0               |
| 0801       | Barren Valley  | 1.4       | 15                           | 52               | 13.1                    | 9.0         | 3           | 1.0        | 1     | 2           | 3           | 0                | 0               | 0               |
| 0902       | West Cow Creek | 2.0       | 14                           | 157              | 15.2                    | 9.0         | 0           | 4.0        | 0     | 2           | 0           | 8,187            | 0               | 0               |
| 0903       | East Cow Creek | 1.3       | 19                           | 60               | 10.9                    | 11.0        | 3           | 0.0        | 0     | 5           | 2           | 0                | 2,578           | 0               |
| 0905       | Oliver         | 1.2       | 18                           | 12               | 11.1                    | 2.0         | 0           | 0.0        | 0     | 2           | 0           | 0                | 0               | 0               |
| 1001       | Arock          | 1.2       | 22                           | 107              | 10.2                    | 5.0         | 0           | 2.0        | 0     | 13          | 2           | 921              | 5,043           | 0               |
| ■ 1002     | Antelope       | 1.9       | 7                            | 74               | 13.5                    | 0.0         | 0           | 1.0        | 0     | 1           | 1           | 2,990            | 4,745           | 0               |
| ■ 1003     | Wroten         | 1.4       | 5                            | 22               | 12.8                    | 0.0         | 0           | 0.0        | 0     | 1           | 0           | 0                | 4,369           | 0               |
| ■ 1004     | Willow Creek   | 1.6       | 4                            | 136              | 13.4                    | 0.0         | 2           | 7.0        | 0     | 11          | 1           | 4,682            | 5,036           | 0               |
| 1005       | Raburn         | 1.6       | 17                           | 4                | 11.1                    | 0.0         | 0           | 0.0        | 0     | 1           | 0           | 0                | 0               | 0               |
| 1101       | Jackies Butte  | 2.5       | 12                           | 172              | 20.5                    | 0.0         | 0           | 4.0        | 1     | 6           | 0           | 0                | 11,577          | 0               |
| ■ 1201     | Fifteen Mile   | 1.2       | 3                            | 441              | 9.8                     | 26.0        | 4           | 10.0       | 0     | 1           | 0           | 16,879           | 8,121           | 0               |
| ■ 1202     | McCormick      | 1.1       | 1                            | 133              | 9.5                     | 6.0         | 1           | 0.0        | 0     | 1           | 0           | 1,400            | 9,575           | 0               |
| ■ 1203     | Zimmerman      | 1.2       | 2                            | 22               | 8.5                     | 0.0         | 0           | 0.0        | 0     | 2           | 0           | 0                | 1,356           | 0               |
| ■ 1204     | Willow Creek   | 1.4       | 6                            | 117              | 11.6                    | 4.0         | 0           | 5.0        | 1     | 0           | 0           | 3,627            | 0               | 0               |
| 1301       | Gilbert        | 8.8       | 8                            | 2                | 25.0                    | 0.0         | 1           | 0.0        | 0     | 0           | 0           | 0                | 0               | 0               |
| 1302       | Echave         | 5.3       | 9                            | 8                | 22.0                    | 0.0         | 0           | 0.0        | 0     | 2           | 0           | 0                | 0               | 0               |
| 1303       | Sherburn       | 1.1       | 23                           | 7                | 8.4                     | 0.0         | 4           | 0.0        | 0     | 0           | 0           | 0                | 0               | 0               |
| 1304       | Albisu-Alcorta | 1.0       | 24                           | 12               | 7.9                     | 0.0         | 2           | 0.0        | 0     | 2           | 0           | 0                | 0               | 0               |
| 1305       | Eiguren        | 3.8       | 11                           | 20               | 21.5                    | 0.0         | 0           | 0.0        | 0     | 0           | 0           | 0                | 4,712           | 0               |
| 1306       | Campbell       | 5.2       | 10                           | 16               | 21.8                    | 0.0         | 0           | 0.0        | 0     | 4           | 0           | 0                | 0               | 0               |
| 1307       | Louse Canyon   | 1.4       | 20                           | 55               | 10.8                    | 2.0         | 2           | 0.0        | 0     | 2           | 0           | 2,773            | 0               | 0               |
| 1401       | Anderson       | 0.9       | 25                           | 19               | 7.1                     | 2.0         | 0           | 0.0        | 0     | 0           | 0           | 0                | 3,794           | 0               |
| 1402       | Star Valley    | 1.2       | 21                           | 56               | 10.3                    | 7.0         | 0           | 0.0        | 0     | 2           | 1           | 0                | 2,653           | 0               |

<sup>1</sup> Two sets of priority ranking are shown. One for the Northern Malheur Resource Area (Allotments 0300 thru 0501) and one for the Southern Malheur Resource Area (Allotment 0603 thru 1402).

■ Improve (I) category allotments.





- Allotment Numbers and Allotment Names**
- 0000 UNALLOTTED
  - 0000 SKULL SPRINGS
  - 0000 TURNBULL AREA OF USE
  - 0304 BLACK BUTTE
  - 0305 BRIDGE CREEK
  - 0306 JONESBORO
  - 0400 BONEY BASIN
  - 0400 HARPER BASIN
  - 0407 LITTLE VALLEY
  - 0408 MITCHELL BUTTE INDIVIDUAL
  - 0410 RADAR HILL
  - 0412 CHALK BUTTE
  - 0500 MAHOGANY
  - 0501 BLACKJACK
  - 0502 LOWER OWYHEE RIVER
  - 0506 BIRCH CREEK
  - 0601 DOWELL
  - 0602 HORSESHOE T
  - 0603 McEWEN
  - 0604 MORGER
  - 0605 VENATOR
  - 0701 SHEEPHEADS
  - 0801 BARREN VALLEY COMMON
  - 0802 SAND GAP
  - 0901 LOOGE
  - 0902 WEST COW CREEK
  - 0903 EAST COW CREEK
  - 0904 BOGUS CREEK
  - 0905 OLIVER
  - 0907 MORCUM
  - 1001 AROCK
  - 1002 ANTELOPE
  - 1003 WROTEN
  - 1004 WILLOW CREEK
  - 1005 RABURN
  - 1006 EIGUREN INDIVIDUAL
  - 1007 ARELGOLD INDIVIDUAL
  - 1008 OWYHEE EIS
  - 1101 JACKIES BUTTE
  - 1102 AMBROSE MAHER
  - 1103 JACKES BUTTE (WINTER)
  - 1201 FIFTEEN MILE COMMON
  - 1202 MCCORMICK
  - 1203 ZIMMERMAN
  - 1204 WILLOW CREEK FIFTEEN
  - 1205 MCDERMOTT CREEK
  - 1301 GILBERT
  - 1302 ECHAVE
  - 1303 SHERBURN
  - 1304 ALBISU-ALCORTA
  - 1305 EIGUREN
  - 1306 CAMPBELL
  - 1307 LOUSE CANYON COMMON
  - 1308 TEN MILE SEEDING
  - 1401 ANDERSON
  - 1402 STAR VALLEY COMMON

— Allotment Boundary

U. S. DEPARTMENT OF THE INTERIOR  
BUREAU OF LAND MANAGEMENT  
VALE DISTRICT

**SOUTHERN MALHEUR  
ENVIRONMENTAL IMPACT STATEMENT**

1983

**FIGURE 1-1  
LAND STATUS and  
ALLOTMENTS**

**LEGEND**

- Public Land
- Private
- State Land











**U.S. Department of the Interior**

Bureau of Land Management

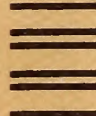
Vale District Office

P.O. Box 700

Vale, OR 97918

**OFFICIAL BUSINESS**

PENALTY FOR PRIVATE USE, \$300



FIRST-CLASS MAIL  
POSTAGE & FEES PAID  
U.S. DEPARTMENT OF THE INTERIOR  
PERMIT NO. G-76