

# vici.org - mapping the Roman Empire from home

René Voorburg  
*Wikidata trifft Archäologie 2013*



... in a sense, the Vici.org project started a few years ago with my two sons ...

... we often visited the site of the 19th century fort 'Vechten' that also hides the remains of Roman Fectio ...



... its Roman history intrigued me, and made me want see the place as it once was..



# ITINERARIUM GERMANIAE INFERIORIS



... to get a sense of space I played with a routeplanner algorithm and data on Germania Inferior ...

## ITER VESTRUM

AB :

AD :

© RENATUS FORO HADRIANI FECIT MMXI

## ITER BREVISSIMUM

AB FORUM HADRIANI AD FECTIO  
XXXVI LEUGA GALLICA  
FERE III DIES

FORUM HADRIANI (VOORBURG)	
-----	VII LEGUA
LUGDUNUM BATAVORUM (KATWIJK AAN ZEE)	VII
-----	II LEGUA
PRAETORIUM AGRIPPINAE (VALKENBURG)	IX
-----	III LEGUA
MATILLO (LEIDEN-ROOMBURG)	XII
-----	V LEGUA
ALBANIANA (ALPHEN AAN DEN RIJN)	XVII
-----	II LEGUA
NIGRUM PULLUM (ZWAMMERDAM)	XIX
-----	V LEGUA
LAURIUM (WOERDEN)	XXIV
-----	VI LEGUA
FLETIO (VLEUTEN)	XXX
-----	IV LEGUA
TRAIECTUM (UTRECHT)	XXXIV
-----	II LEGUA
FECTIO (VECHTEN)	XXXVI

# OMNES VIAE: RÖMISCHER ROUTENPLANER

| en | de | el | fr | it | nl |

eine antike römische Weltkarte rekonstruiert mit Internet-Technologie

| Karte | Rekonstruktion | Danksagung |

Besuche auch Vici.org für Römische Geschichte in der Nähe

## ITER VESTRUM

AB:

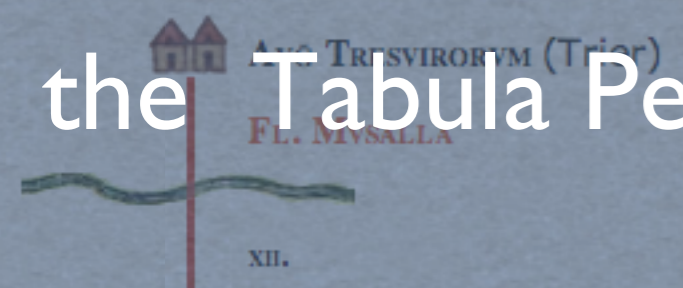
AD:

## ITER BREVISSIMUM

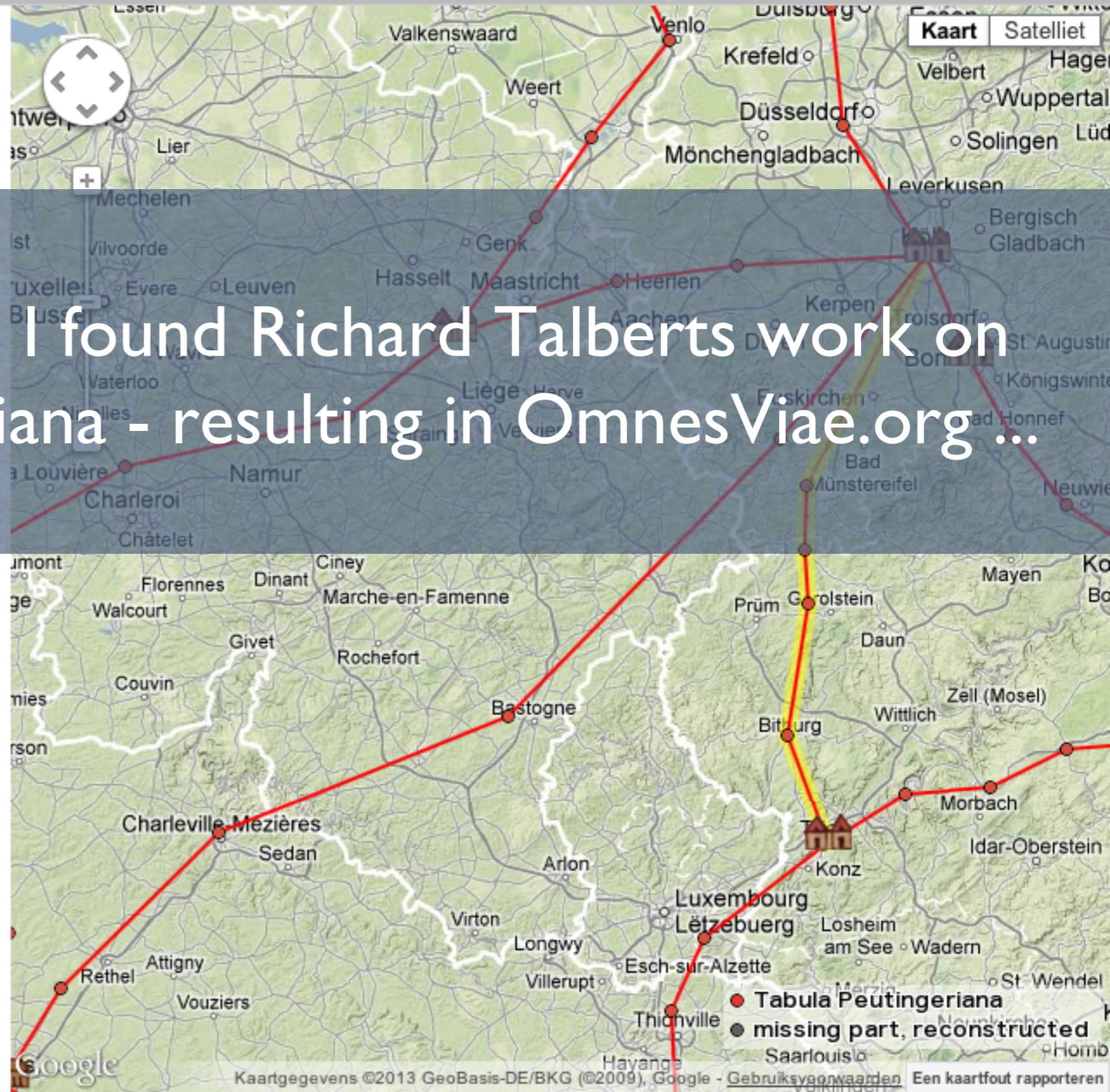
AB 'AVG TRESVIRORVM' AD 'AGRIPINA'

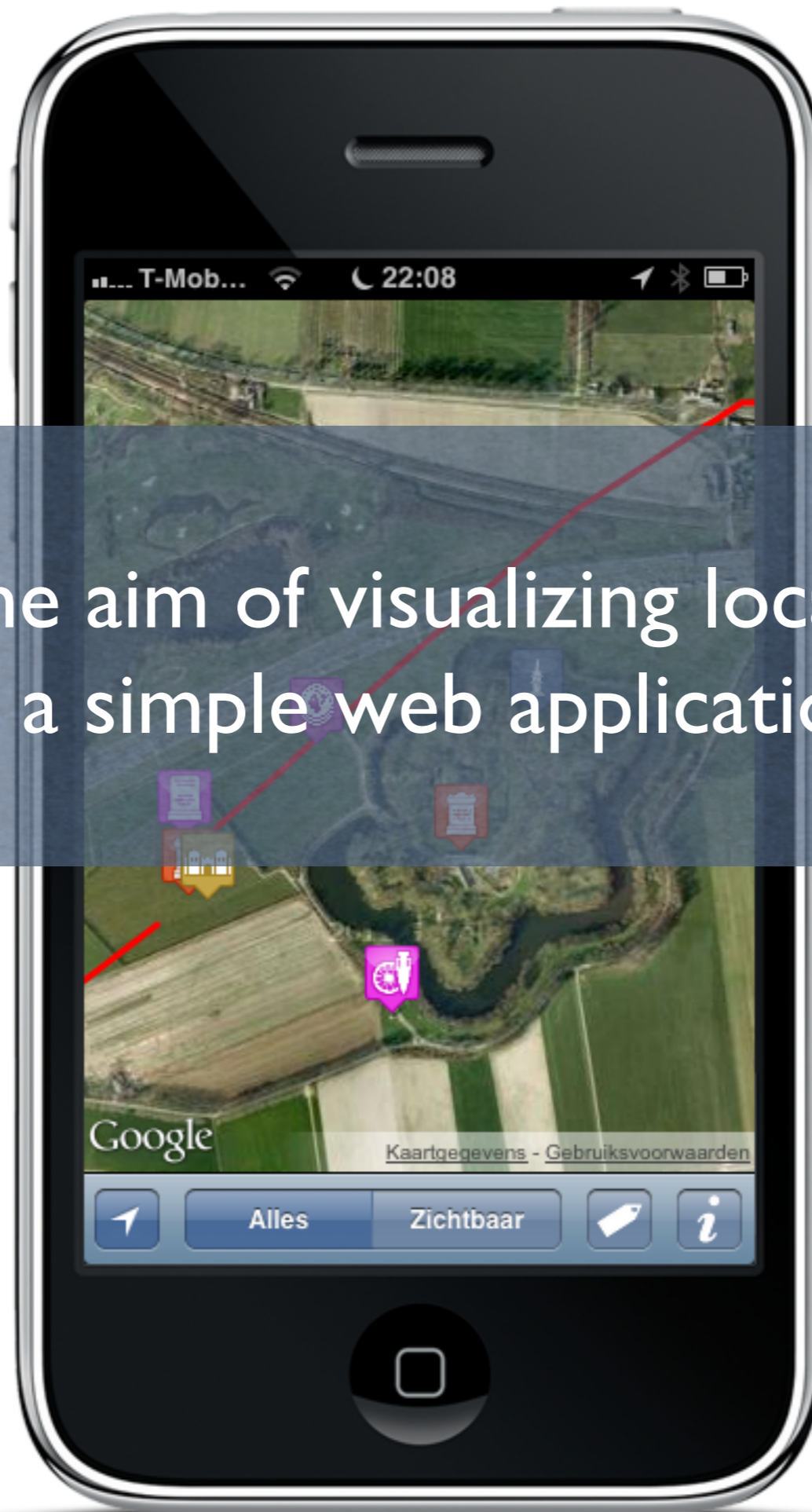
SUMMA LX MILIA PASSUUM / LEUGA GALLICA.

PERE V DIES



... this took off when I found Richard Talberts work on the Tabula Peutingeriana - resulting in OmnesViae.org ...





HTML5

location aware  
static JSON data

... I returned to the aim of visualizing local Roman history  
with a simple web application... in need of a  
database driven

backend

# Requirements for a map / mapping tool

- Primarily a map, with categorised markers and lines, backed by lemmas
- By and for the ‘general public’
- Disrespecting current day borders
- Version management
- In the spirit of Wikipedia / Open Source / Open Data



# MediaWiki?

- Separate languages?  
Separate knowledge domains!
- Not very suitable for enforcing highly structured data input

...or just wikitext formatting?

- Wikitext Parser.php class not easy separable
- No good alternatives?

# Creating a custom tool

- For desktop and mobile (HTML5)
- PHP, MySQL, Google Maps Api V3, CKEditor
- Multi-language: Dutch, English (German, French, extendable)
- Data available as JSON (JSONP, CORS), KML OpenSearch, Javascript widget API
- Code on Github:  
<https://github.com/renevoorburg/vici/>

Landkarte

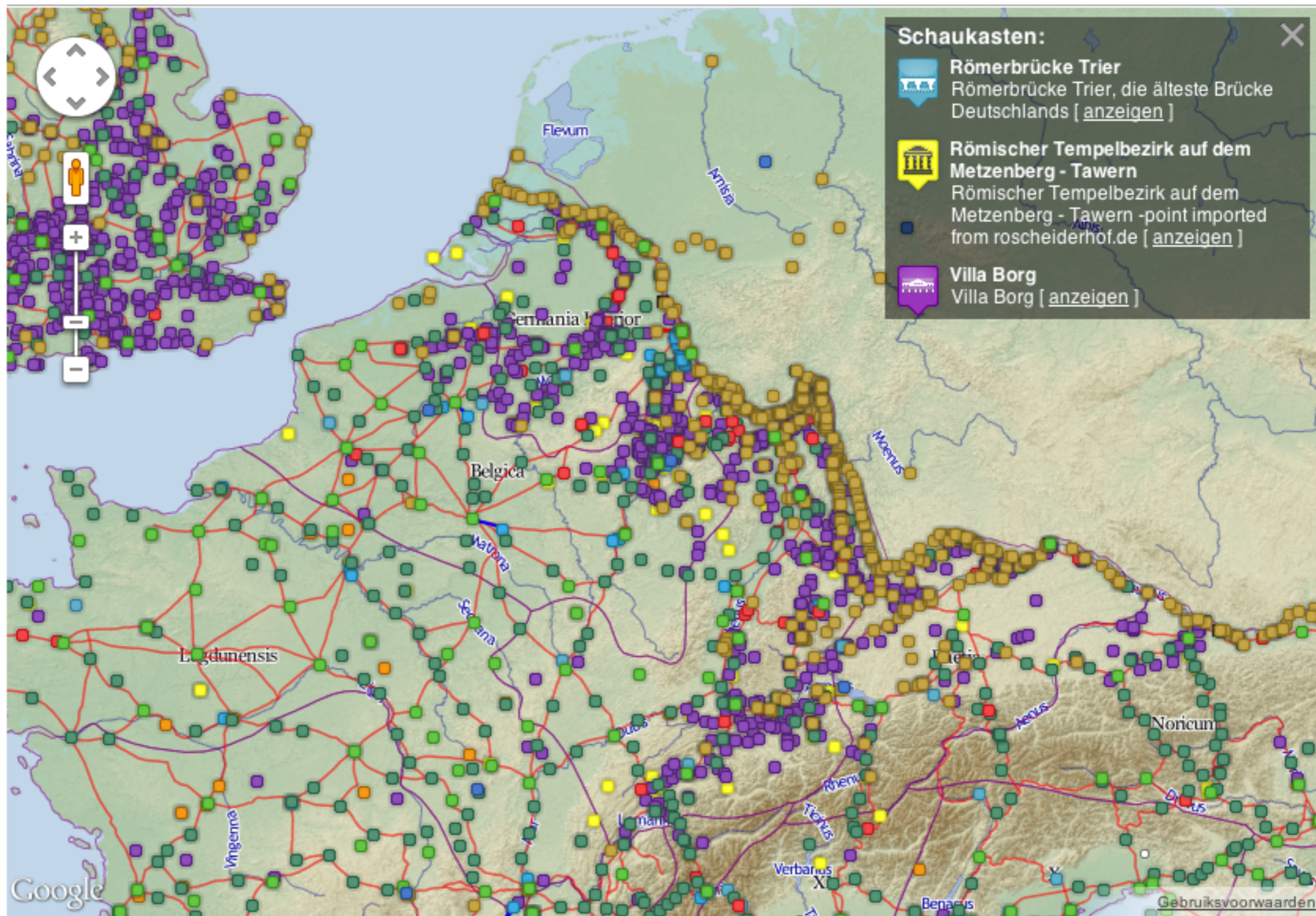
- Neuen Ort einfügen
- Zuletzt hinzugefügt
- Letzte Änderungen

- Karte verlinken
- Vici widget
- Datendienste
- Mobile Ansicht
- Präsentation
- Über Vici.org

- In anderen Sprachen
- English
  - Français
  - Nederlands



# Römische Geschichte in der Nähe:



# Römischer Tempelbezirk auf dem Metzenberg - Tawern

[Bearbeiten]

Typ: Religion - Tempel - Tempelbezirk

Provinz: Belgica

Adresse: Bachstraße, 54456 Tawern, Deutschland

errichtet: ?

Untergang: 392

## Siehe/See Further:

- [http://de.wikipedia.org/wiki/Römischer\\_Tempelbezirk\\_Tawern](http://de.wikipedia.org/wiki/Römischer_Tempelbezirk_Tawern)
- <http://www.saarchaeologie.de/galerie/tawern.htm>
- [http://www.tawern.org/tempel/tempelallgemein/tempel\\_01.htm](http://www.tawern.org/tempel/tempelallgemein/tempel_01.htm)

## Bewertung:

★★★★★

## Bilder aus der Gegend



Römischer Tempelbezirk auf dem Metzenberg - Tawern -point imported from roscheiderhof.de

### Kategorie:

Temple  
visible

### Geschätzte Genauigkeit:

0 - 5 m.

### External identifiers:

[http://de.wikipedia.org/wiki/Römischer\\_Tempelbezirk\\_Tawern](http://de.wikipedia.org/wiki/Römischer_Tempelbezirk_Tawern)  
<http://www.saarchaeologie.de/galerie/tawern.htm>  
[http://www.tawern.org/tempel/tempelallgemein/tempel\\_01.htm](http://www.tawern.org/tempel/tempelallgemein/tempel_01.htm)

Landkarte

Neuen Ort einfügen

Zuletzt hinzugefügt

Letzte Änderungen

Karte verlinken

Vici widget

Datendienste

Mobile Ansicht

Präsentation

Über Vici.org

In anderen Sprachen

English

Français

Nederlands



# Usage

- ~ 70 unique visitors /day
- 90 registered users (in a ~ year)
- 27 users added new content
- 50% added more than 12 objects
  - #1: 1874
  - #2: 878
- ~12500 geolocated objects

(excluding semi-automated data imports)

# Data sources

- OmnesViae (Richard Talbert, tabula-peutingeriana.de, wikipedia, Pleiades, Geonames)
- Livius.org, Romaq.org, Imperium project by Johan Åhlfeldt,
- Data from government websites (uk!), pastcape etc.
- Various hobbyists websites
- Archeological reports and books

# Some future plans / ideas

- Allow users to add / edit polylines (roads, aqueducts)
- Improve support for Pleiades identifiers & support Pelagios RDF
- Overall design and code quality improvements
- Community features
- Extend version management

# Concerns

- Data quality (too much, too little)
- Mixed / unclear copyright situations
- Code quality
- Continuity



**any questions?**

**[rene@digitopia.nl](mailto:rene@digitopia.nl)**