

# SARINING SUNDARI GADHING

*Pusat Dokumentasi  
Dinas Kebudayaan Provinsi Bali*

  
PERPUSTAKAAN  
KTR. DOKBUD BALI  
PROP. BALI

W/III/3/DOKBUD

Judul: Sarining Sundari Gadhing.  
Pnj. 30 cm. Lb. 3,5 cm. Jml. 38 lb.  
Asal: Griya Kecicang, Karangasem.

Judul: Sarining Sundari Gadhing.  
Pnj. 30 cm. Lb. 3,5 cm. Jml. 38 lb.  
Asal: Griya Kecicang, Karangasem.



1  
A

# SARINING SUNDARI GADHING

Pusat Dokumentasi  
Dinas Kebudayaan Provinsi Bali

3  
1  
B

54  
ꦱꦫꦶꦤꦶꦁꦱꦸꦤꦠꦫꦶꦁꦒꦢꦲꦶꦁꦒ  
ꦱꦫꦶꦤꦶꦁꦱꦸꦤꦠꦫꦶꦁꦒꦢꦲꦶꦁꦒ  
ꦱꦫꦶꦤꦶꦁꦱꦸꦤꦠꦫꦶꦁꦒꦢꦲꦶꦁꦒ  
ꦱꦫꦶꦤꦶꦁꦱꦸꦤꦠꦫꦶꦁꦒꦢꦲꦶꦁꦒ

ꦱꦫꦶꦤꦶꦁꦱꦸꦤꦠꦫꦶꦁꦒꦢꦲꦶꦁꦒ  
ꦱꦫꦶꦤꦶꦁꦱꦸꦤꦠꦫꦶꦁꦒꦢꦲꦶꦁꦒ  
ꦱꦫꦶꦤꦶꦁꦱꦸꦤꦠꦫꦶꦁꦒꦢꦲꦶꦁꦒ  
ꦱꦫꦶꦤꦶꦁꦱꦸꦤꦠꦫꦶꦁꦒꦢꦲꦶꦁꦒ



4  
2  
A

ꦱꦫꦶꦤꦶꦁꦱꦸꦤꦠꦫꦶꦁꦒꦢꦲꦶꦁꦒ  
ꦱꦫꦶꦤꦶꦁꦱꦸꦤꦠꦫꦶꦁꦒꦢꦲꦶꦁꦒ  
ꦱꦫꦶꦤꦶꦁꦱꦸꦤꦠꦫꦶꦁꦒꦢꦲꦶꦁꦒ  
ꦱꦫꦶꦤꦶꦁꦱꦸꦤꦠꦫꦶꦁꦒꦢꦲꦶꦁꦒ

ꦱꦫꦶꦤꦶꦁꦱꦸꦤꦠꦫꦶꦁꦒꦢꦲꦶꦁꦒ  
ꦱꦫꦶꦤꦶꦁꦱꦸꦤꦠꦫꦶꦁꦒꦢꦲꦶꦁꦒ  
ꦱꦫꦶꦤꦶꦁꦱꦸꦤꦠꦫꦶꦁꦒꦢꦲꦶꦁꦒ  
ꦱꦫꦶꦤꦶꦁꦱꦸꦤꦠꦫꦶꦁꦒꦢꦲꦶꦁꦒ

SARINING SUNDARI GADHING

Pusat Dokumentasi

Dinas Kebudayaan Provinsi Bali

2  
B

Handwritten text in Balinese script on a palm leaf, consisting of two columns of text.

3  
A

Handwritten text in Balinese script on a palm leaf, consisting of two columns of text.



SARINING SUNDARI GADHING

Pusat Dokumentasi  
Dinas Kebudayaan Provinsi Bali

8

4

B

ᮘᮞ᮪ᮒ᮪ ᮘᮞ᮪ᮒ᮪ ᮘᮞ᮪ᮒ᮪ ᮘᮞ᮪ᮒ᮪ ᮘᮞ᮪ᮒ᮪ ᮘᮞ᮪ᮒ᮪  
ᮘᮞ᮪ᮒ᮪ ᮘᮞ᮪ᮒ᮪ ᮘᮞ᮪ᮒ᮪ ᮘᮞ᮪ᮒ᮪ ᮘᮞ᮪ᮒ᮪ ᮘᮞ᮪ᮒ᮪  
ᮘᮞ᮪ᮒ᮪ ᮘᮞ᮪ᮒ᮪ ᮘᮞ᮪ᮒ᮪ ᮘᮞ᮪ᮒ᮪ ᮘᮞ᮪ᮒ᮪ ᮘᮞ᮪ᮒ᮪  
ᮘᮞ᮪ᮒ᮪ ᮘᮞ᮪ᮒ᮪ ᮘᮞ᮪ᮒ᮪ ᮘᮞ᮪ᮒ᮪ ᮘᮞ᮪ᮒ᮪ ᮘᮞ᮪ᮒ᮪

ᮘᮞ᮪ᮒ᮪ ᮘᮞ᮪ᮒ᮪ ᮘᮞ᮪ᮒ᮪ ᮘᮞ᮪ᮒ᮪ ᮘᮞ᮪ᮒ᮪ ᮘᮞ᮪ᮒ᮪  
ᮘᮞ᮪ᮒ᮪ ᮘᮞ᮪ᮒ᮪ ᮘᮞ᮪ᮒ᮪ ᮘᮞ᮪ᮒ᮪ ᮘᮞ᮪ᮒ᮪ ᮘᮞ᮪ᮒ᮪  
ᮘᮞ᮪ᮒ᮪ ᮘᮞ᮪ᮒ᮪ ᮘᮞ᮪ᮒ᮪ ᮘᮞ᮪ᮒ᮪ ᮘᮞ᮪ᮒ᮪ ᮘᮞ᮪ᮒ᮪  
ᮘᮞ᮪ᮒ᮪ ᮘᮞ᮪ᮒ᮪ ᮘᮞ᮪ᮒ᮪ ᮘᮞ᮪ᮒ᮪ ᮘᮞ᮪ᮒ᮪ ᮘᮞ᮪ᮒ᮪

9

5

A

ᮘᮞ᮪ᮒ᮪ ᮘᮞ᮪ᮒ᮪ ᮘᮞ᮪ᮒ᮪ ᮘᮞ᮪ᮒ᮪ ᮘᮞ᮪ᮒ᮪ ᮘᮞ᮪ᮒ᮪  
ᮘᮞ᮪ᮒ᮪ ᮘᮞ᮪ᮒ᮪ ᮘᮞ᮪ᮒ᮪ ᮘᮞ᮪ᮒ᮪ ᮘᮞ᮪ᮒ᮪ ᮘᮞ᮪ᮒ᮪  
ᮘᮞ᮪ᮒ᮪ ᮘᮞ᮪ᮒ᮪ ᮘᮞ᮪ᮒ᮪ ᮘᮞ᮪ᮒ᮪ ᮘᮞ᮪ᮒ᮪ ᮘᮞ᮪ᮒ᮪  
ᮘᮞ᮪ᮒ᮪ ᮘᮞ᮪ᮒ᮪ ᮘᮞ᮪ᮒ᮪ ᮘᮞ᮪ᮒ᮪ ᮘᮞ᮪ᮒ᮪ ᮘᮞ᮪ᮒ᮪

ᮘᮞ᮪ᮒ᮪ ᮘᮞ᮪ᮒ᮪ ᮘᮞ᮪ᮒ᮪ ᮘᮞ᮪ᮒ᮪ ᮘᮞ᮪ᮒ᮪ ᮘᮞ᮪ᮒ᮪  
ᮘᮞ᮪ᮒ᮪ ᮘᮞ᮪ᮒ᮪ ᮘᮞ᮪ᮒ᮪ ᮘᮞ᮪ᮒ᮪ ᮘᮞ᮪ᮒ᮪ ᮘᮞ᮪ᮒ᮪  
ᮘᮞ᮪ᮒ᮪ ᮘᮞ᮪ᮒ᮪ ᮘᮞ᮪ᮒ᮪ ᮘᮞ᮪ᮒ᮪ ᮘᮞ᮪ᮒ᮪ ᮘᮞ᮪ᮒ᮪  
ᮘᮞ᮪ᮒ᮪ ᮘᮞ᮪ᮒ᮪ ᮘᮞ᮪ᮒ᮪ ᮘᮞ᮪ᮒ᮪ ᮘᮞ᮪ᮒ᮪ ᮘᮞ᮪ᮒ᮪



SARINING SUNDARI GADHING

Pusat Dokumentasi  
Dinas Kebudayaan Provinsi Bali

6  
B

5  
ꦱꦫꦶꦤꦶꦁꦱꦸꦤꦢꦫꦶꦒꦢꦲꦶꦁꦒ  
ꦱꦫꦶꦤꦶꦁꦱꦸꦤꦢꦫꦶꦒꦢꦲꦶꦁꦒ  
ꦱꦫꦶꦤꦶꦁꦱꦸꦤꦢꦫꦶꦒꦢꦲꦶꦁꦒ  
ꦱꦫꦶꦤꦶꦁꦱꦸꦤꦢꦫꦶꦒꦢꦲꦶꦁꦒ

ꦱꦫꦶꦤꦶꦁꦱꦸꦤꦢꦫꦶꦒꦢꦲꦶꦁꦒ  
ꦱꦫꦶꦤꦶꦁꦱꦸꦤꦢꦫꦶꦒꦢꦲꦶꦁꦒ  
ꦱꦫꦶꦤꦶꦁꦱꦸꦤꦢꦫꦶꦒꦢꦲꦶꦁꦒ  
ꦱꦫꦶꦤꦶꦁꦱꦸꦤꦢꦫꦶꦒꦢꦲꦶꦁꦒ

7  
A

ꦱꦫꦶꦤꦶꦁꦱꦸꦤꦢꦫꦶꦒꦢꦲꦶꦁꦒ  
ꦱꦫꦶꦤꦶꦁꦱꦸꦤꦢꦫꦶꦒꦢꦲꦶꦁꦒ  
ꦱꦫꦶꦤꦶꦁꦱꦸꦤꦢꦫꦶꦒꦢꦲꦶꦁꦒ  
ꦱꦫꦶꦤꦶꦁꦱꦸꦤꦢꦫꦶꦒꦢꦲꦶꦁꦒ

ꦱꦫꦶꦤꦶꦁꦱꦸꦤꦢꦫꦶꦒꦢꦲꦶꦁꦒ  
ꦱꦫꦶꦤꦶꦁꦱꦸꦤꦢꦫꦶꦒꦢꦲꦶꦁꦒ  
ꦱꦫꦶꦤꦶꦁꦱꦸꦤꦢꦫꦶꦒꦢꦲꦶꦁꦒ  
ꦱꦫꦶꦤꦶꦁꦱꦸꦤꦢꦫꦶꦒꦢꦲꦶꦁꦒ

SARINING SUNDARI GADHING

Pusat Dokumentasi  
Dinas Kebudayaan Provinsi Bali

7  
B

Handwritten text in Balinese script on a palm leaf manuscript. The text is arranged in two columns. The left column begins with a small symbol resembling a '3' or a similar character. The script is dense and fills most of the leaf's surface.

8  
A

Handwritten text in Balinese script on a palm leaf manuscript. The text is arranged in two columns. The script is dense and fills most of the leaf's surface.



SARINING SUNDARI GADHING

Pusat Dokumentasi  
Dinas Kebudayaan Provinsi Bali

8  
B


Handwritten Balinese script on a palm leaf manuscript strip, starting with a small symbol at the top left.

9  
A

Handwritten Balinese script on a palm leaf manuscript strip, featuring several decorative vertical lines and symbols interspersed with the text.

**SARINING SUNDARI GADHING**

*Pusat Dokumentasi  
Dinas Kebudayaan Provinsi Bali*

3 9 B	<p>Handwritten text and diagrams on a palm leaf manuscript fragment.</p>	<p>Handwritten text on a palm leaf manuscript fragment.</p>	
-------------	--	---	---

70 10 A	<p>Handwritten text on a palm leaf manuscript fragment.</p>	<p>Handwritten text on a palm leaf manuscript fragment.</p>	<p>Small handwritten notes on a palm leaf manuscript fragment.</p>
---------------	---	---	--

SARINING SUNDARI GADHING

Pusat Dokumentasi  
Dinas Kebudayaan Provinsi Bali

10  
B

Handwritten Balinese script on a palm leaf, consisting of approximately 12 lines of text.

11  
A

Handwritten Balinese script on a palm leaf, consisting of approximately 12 lines of text.

SARINING SUNDARI GADHING

Pusat Dokumentasi

Dinas Kebudayaan Provinsi Bali

11B

11

B

Handwritten Balinese script on a palm leaf, starting with '11B' and containing several lines of text.

Handwritten Balinese script on a palm leaf, starting with '11B' and containing several lines of text.

12A

12

A

Handwritten Balinese script on a palm leaf, starting with '12A' and containing several lines of text.

Handwritten Balinese script on a palm leaf, starting with '12A' and containing several lines of text.

SARINING SUNDARI GADHING

Pusat Dokumentasi  
Dinas Kebudayaan Provinsi Bali

12  
B

Handwritten Balinese script on a palm leaf, consisting of two columns of text.

13  
A

Handwritten Balinese script on a palm leaf, consisting of two columns of text.

SARINING SUNDARI GADHING

Pusat Dokumentasi

Dinas Kebudayaan Provinsi Bali

13  
B

Handwritten text in Balinese script on a palm leaf, including several circular symbols and decorative elements.

14  
A

Handwritten text in Balinese script on a palm leaf, including several circular symbols and decorative elements.

SARINING SUNDARI GADHING

Pusat Dokumentasi

Dinas Kebudayaan Provinsi Bali

14  
B

Handwritten text in Balinese script on the left side of the top palm leaf manuscript.

Handwritten text in Balinese script on the right side of the top palm leaf manuscript.

15  
A

Handwritten text in Balinese script on the left side of the bottom palm leaf manuscript.

Handwritten text in Balinese script on the right side of the bottom palm leaf manuscript.

SARINING SUNDARI GADHING

Pusat Dokumentasi

Dinas Kebudayaan Provinsi Bali

15  
B

Handwritten Balinese script on the left side of the top palm leaf manuscript.

Handwritten Balinese script on the right side of the top palm leaf manuscript.

16  
A

Handwritten Balinese script on the left side of the bottom palm leaf manuscript.

Handwritten Balinese script on the right side of the bottom palm leaf manuscript.



SARINING SUNDARI GADHING

Pusat Dokumentasi

Dinas Kebudayaan Provinsi Bali

16  
B

Handwritten text in Balinese script on the left side of the top palm leaf.

Handwritten text in Balinese script on the right side of the top palm leaf.

17  
A

Handwritten text in Balinese script on the left side of the bottom palm leaf.

Handwritten text in Balinese script on the right side of the bottom palm leaf.

SARINING SUNDARI GADHING

Pusat Dokumentasi  
Dinas Kebudayaan Provinsi Bali

17B

17

B

Handwritten Balinese text on a palm leaf, starting with "Sarining Sundari Gadhing".

Handwritten Balinese text on a palm leaf, continuing the inscription.

18A

18

A

Handwritten Balinese text on a palm leaf, starting with "Sarining Sundari Gadhing".

Handwritten Balinese text on a palm leaf, continuing the inscription.

SARINING SUNDARI GADHING

Pusat Dokumentasi  
Dinas Kebudayaan Provinsi Bali

rw 18 B

Handwritten text in Balinese script on a palm leaf, consisting of two columns of text.

rw 19 A

Handwritten text in Balinese script on a palm leaf, consisting of two columns of text.

SARINING SUNDARI GADHING

Pusat Dokumentasi

Dinas Kebudayaan Provinsi Bali

19  
B

Handwritten text on a palm leaf manuscript strip, likely in Balinese script. The text is arranged in two columns. The left column begins with a small symbol resembling a crescent moon and a star.

20  
A

Handwritten text on a palm leaf manuscript strip, likely in Balinese script. The text is arranged in two columns. The left column begins with a small symbol resembling a crescent moon and a star.



**SARINING SUNDARI GADHING**

Pusat Dokumentasi

Dinas Kebudayaan Provinsi Bali

21  
B

40  
1. <sup>၃၅</sup>တၢ် တၢ်တၢ် ပၢ်ပၢ်၊ ယၢ်တၢ် ပၢ်ပၢ်၊ တၢ်တၢ် တၢ်တၢ်  
တၢ်တၢ် တၢ်တၢ် တၢ်တၢ် တၢ်တၢ် တၢ်တၢ် တၢ်တၢ်  
တၢ်တၢ် တၢ်တၢ် တၢ်တၢ် တၢ်တၢ် တၢ်တၢ် တၢ်တၢ်  
တၢ်တၢ် တၢ်တၢ် တၢ်တၢ် တၢ်တၢ် တၢ်တၢ် တၢ်တၢ်

22  
A

တၢ်တၢ် တၢ်တၢ် တၢ်တၢ် တၢ်တၢ် တၢ်တၢ် တၢ်တၢ်  
တၢ်တၢ် တၢ်တၢ် တၢ်တၢ် တၢ်တၢ် တၢ်တၢ် တၢ်တၢ်  
တၢ်တၢ် တၢ်တၢ် တၢ်တၢ် တၢ်တၢ် တၢ်တၢ် တၢ်တၢ်  
တၢ်တၢ် တၢ်တၢ် တၢ်တၢ် တၢ်တၢ် တၢ်တၢ် တၢ်တၢ်

SARINING SUNDARI GADHING

Pusat Dokumentasi

Dinas Kebudayaan Provinsi Bali

22  
B

Handwritten Balinese script on a palm leaf, consisting of two columns of text.

23  
A

Handwritten Balinese script on a palm leaf, consisting of two columns of text.

SARINING SUNDARI GADHING

Pusat Dokumentasi

Dinas Kebudayaan Provinsi Bali

၅၇

23

B

၅၇  
၅၈၂၃၊ ဤကဏ္ဍ၊ ဤကဏ္ဍ၊ ဤကဏ္ဍ၊ ဤကဏ္ဍ၊ ဤကဏ္ဍ၊  
ဤကဏ္ဍ၊ ဤကဏ္ဍ၊ ဤကဏ္ဍ၊ ဤကဏ္ဍ၊ ဤကဏ္ဍ၊  
ဤကဏ္ဍ၊ ဤကဏ္ဍ၊ ဤကဏ္ဍ၊ ဤကဏ္ဍ၊ ဤကဏ္ဍ၊  
ဤကဏ္ဍ၊ ဤကဏ္ဍ၊ ဤကဏ္ဍ၊ ဤကဏ္ဍ၊ ဤကဏ္ဍ၊

၅၈၂၃၊ ဤကဏ္ဍ၊ ဤကဏ္ဍ၊ ဤကဏ္ဍ၊ ဤကဏ္ဍ၊ ဤကဏ္ဍ၊  
ဤကဏ္ဍ၊ ဤကဏ္ဍ၊ ဤကဏ္ဍ၊ ဤကဏ္ဍ၊ ဤကဏ္ဍ၊  
ဤကဏ္ဍ၊ ဤကဏ္ဍ၊ ဤကဏ္ဍ၊ ဤကဏ္ဍ၊ ဤကဏ္ဍ၊  
ဤကဏ္ဍ၊ ဤကဏ္ဍ၊ ဤကဏ္ဍ၊ ဤကဏ္ဍ၊ ဤကဏ္ဍ၊

၅၈

24

A

၅၈  
ဤကဏ္ဍ၊ ဤကဏ္ဍ၊ ဤကဏ္ဍ၊ ဤကဏ္ဍ၊ ဤကဏ္ဍ၊  
ဤကဏ္ဍ၊ ဤကဏ္ဍ၊ ဤကဏ္ဍ၊ ဤကဏ္ဍ၊ ဤကဏ္ဍ၊  
ဤကဏ္ဍ၊ ဤကဏ္ဍ၊ ဤကဏ္ဍ၊ ဤကဏ္ဍ၊ ဤကဏ္ဍ၊

ဤကဏ္ဍ၊ ဤကဏ္ဍ၊ ဤကဏ္ဍ၊ ဤကဏ္ဍ၊ ဤကဏ္ဍ၊  
ဤကဏ္ဍ၊ ဤကဏ္ဍ၊ ဤကဏ္ဍ၊ ဤကဏ္ဍ၊ ဤကဏ္ဍ၊  
ဤကဏ္ဍ၊ ဤကဏ္ဍ၊ ဤကဏ္ဍ၊ ဤကဏ္ဍ၊ ဤကဏ္ဍ၊  
ဤကဏ္ဍ၊ ဤကဏ္ဍ၊ ဤကဏ္ဍ၊ ဤကဏ္ဍ၊ ဤကဏ္ဍ၊



SARINING SUNDARI GADHING

Pusat Dokumentasi

Dinas Kebudayaan Provinsi Bali

24

24

B

Handwritten Balinese script on a palm leaf, starting with a small symbol and followed by several lines of text.

Handwritten Balinese script on a palm leaf, continuing the text from the previous leaf.

25

25

A

Handwritten Balinese script on a palm leaf, starting with a small symbol and followed by several lines of text.

Handwritten Balinese script on a palm leaf, continuing the text from the previous leaf.

SARINING SUNDARI GADHING

Pusat Dokumentasi

Dinas Kebudayaan Provinsi Bali

25  
B

၁၅

၁၅။ ဣယျတေဗ္ဗိသန္တေဗ္ဗိ၊ ဣသိလိတိဗ္ဗာတိဗ္ဗာသိဗ္ဗာ  
ပသိဗ္ဗာသိဗ္ဗာတေဗ္ဗာ၊ ဗျတိလလတေ၊ သန္တေဗ္ဗာ၊ ပဗ္ဗာသန္တ  
ဗြာ၊ ဘိဗ္ဗာသိဗ္ဗာ၊ ဣယျတိဗ္ဗာ၊ ဂမာသန္တေဗ္ဗာ၊ သိဗ္ဗာ  
တေဗ္ဗာသန္တပုဗ္ဗာဗြာသိဗ္ဗာ၊ တ၊ ပုဗ္ဗာ၊ ဣသိ၊ ဣသိ

သိဗ္ဗာသိဗ္ဗာ၊ ဘိဗ္ဗာသိဗ္ဗာ၊ ဘိဗ္ဗာသိဗ္ဗာ၊ ဘိဗ္ဗာသိဗ္ဗာ၊ ဘိဗ္ဗာသိဗ္ဗာ  
၁။ ပဗ္ဗာသန္တ၊ သန္တပုဗ္ဗာသိဗ္ဗာ၊ ဣသိဗ္ဗာသိဗ္ဗာ၊ ဣသိဗ္ဗာသိဗ္ဗာ  
သိဗ္ဗာသိဗ္ဗာ၊ ပုဗ္ဗာသန္တသိဗ္ဗာ၊ သန္တပုဗ္ဗာသိဗ္ဗာ၊ ပုဗ္ဗာ၊ ပုဗ္ဗာ  
၊ ဣသိသိဗ္ဗာ၊ သိဗ္ဗာ၊ ဣသိဗ္ဗာ၊ ဣသိဗ္ဗာ၊ ဣသိဗ္ဗာ၊ ပုဗ္ဗာ

26  
A

၁။ ဣသိဗ္ဗာသိဗ္ဗာ၊ ဣသိဗ္ဗာသိဗ္ဗာ၊ ဣသိဗ္ဗာသိဗ္ဗာ၊ ဣသိဗ္ဗာသိဗ္ဗာ  
ဗျာ၊ ဣသိဗ္ဗာသိဗ္ဗာ၊ ဣသိဗ္ဗာသိဗ္ဗာ၊ ဣသိဗ္ဗာသိဗ္ဗာ၊ ဣသိဗ္ဗာသိဗ္ဗာ  
၊ ဣသိဗ္ဗာသိဗ္ဗာ၊ ပုဗ္ဗာသိဗ္ဗာ၊ ဣသိဗ္ဗာသိဗ္ဗာ၊ ဣသိဗ္ဗာသိဗ္ဗာ  
ဣသိဗ္ဗာသိဗ္ဗာ၊ ဣသိဗ္ဗာသိဗ္ဗာ၊ ဣသိဗ္ဗာသိဗ္ဗာ၊ ဣသိဗ္ဗာသိဗ္ဗာ

သန္တပုဗ္ဗာသိဗ္ဗာ၊ တ၊ ပုဗ္ဗာသိဗ္ဗာသိဗ္ဗာ၊ သန္တပုဗ္ဗာသိဗ္ဗာသိဗ္ဗာ  
သန္တပုဗ္ဗာသိဗ္ဗာ၊ ဣသိဗ္ဗာသိဗ္ဗာ၊ ဣသိဗ္ဗာသိဗ္ဗာ၊ ဣသိဗ္ဗာသိဗ္ဗာ  
ပုဗ္ဗာသိဗ္ဗာ၊ တ၊ သန္တပုဗ္ဗာသိဗ္ဗာသိဗ္ဗာ၊ ဣသိဗ္ဗာသိဗ္ဗာ၊ ဣသိဗ္ဗာသိဗ္ဗာ  
တေဗ္ဗာသိဗ္ဗာသိဗ္ဗာ၊ သိဗ္ဗာသိဗ္ဗာသိဗ္ဗာ၊ သိဗ္ဗာသိဗ္ဗာသိဗ္ဗာသိဗ္ဗာ

SARINING SUNDARI GADHING

Pusat Dokumentasi

Dinas Kebudayaan Provinsi Bali

26  
B

Handwritten Balinese script on the left side of the top palm leaf manuscript.

Handwritten Balinese script on the right side of the top palm leaf manuscript.

27  
A

Handwritten Balinese script on the left side of the bottom palm leaf manuscript.

Handwritten Balinese script on the right side of the bottom palm leaf manuscript, including a circular stamp.

SARINING SUNDARI GADHING

Pusat Dokumentasi

Dinas Kebudayaan Provinsi Bali

27  
B

Handwritten Balinese script on a palm leaf, consisting of two columns of text.

28  
A

Handwritten Balinese script on a palm leaf, consisting of two columns of text.

SARINING SUNDARI GADHING

Pusat Dokumentasi

Dinas Kebudayaan Provinsi Bali

28  
B

Handwritten Balinese script on a palm leaf, consisting of two columns of text.

29  
A

Handwritten Balinese script on a palm leaf, consisting of two columns of text.

SARINING SUNDARI GADHING

Pusat Dokumentasi

Dinas Kebudayaan Provinsi Bali

29

29

B

43

1. ...  
...  
...  
...  
...  
...

...  
...  
...  
...  
...  
...

30

30

A

...  
...  
...  
...  
...

...  
...  
...  
...  
...



SARINING SUNDARI GADHING

Pusat Dokumentasi

Dinas Kebudayaan Provinsi Bali

31  
B

Handwritten Balinese script on a palm leaf, consisting of two columns of text.

32  
A

Handwritten Balinese script on a palm leaf, consisting of two columns of text.



SARINING SUNDARI GADHING

Pusat Dokumentasi

Dinas Kebudayaan Provinsi Bali

32

32

B

25

Handwritten Balinese script on the left side of the palm leaf manuscript 32.

Handwritten Balinese script on the right side of the palm leaf manuscript 32.

33

33

B

Handwritten Balinese script on the left side of the palm leaf manuscript 33.

Handwritten Balinese script on the right side of the palm leaf manuscript 33.



SARINING SUNDARI GADHING

Pusat Dokumentasi  
Dinas Kebudayaan Provinsi Bali

33

34

B

Handwritten text in two columns on a palm leaf, starting with a decorative symbol on the left. The script is a form of Balinese, likely Sarining Sundari Gadhing. The text is arranged in approximately 14 horizontal lines across the two columns.

34

35

A

Handwritten text in two columns on a palm leaf, starting with a decorative symbol on the left. The script is a form of Balinese, likely Sarining Sundari Gadhing. The text is arranged in approximately 14 horizontal lines across the two columns.



SARINING SUNDARI GADHING

Pusat Dokumentasi

Dinas Kebudayaan Provinsi Bali

36

B

36

Handwritten Balinese script on the left side of the top palm leaf.

Handwritten Balinese script on the right side of the top palm leaf.

37

A

Handwritten Balinese script on the left side of the bottom palm leaf.

Handwritten Balinese script on the right side of the bottom palm leaf.

SARINING SUNDARI GADHING

Pusat Dokumentasi  
Dinas Kebudayaan Provinsi Bali

37  
B

Handwritten Balinese script on a palm leaf. The text is arranged in two columns. The right column contains a circular stamp that reads "PROVINSI KEBUDAYAAN BALI" and "PUSAT DOKUMENTASI".

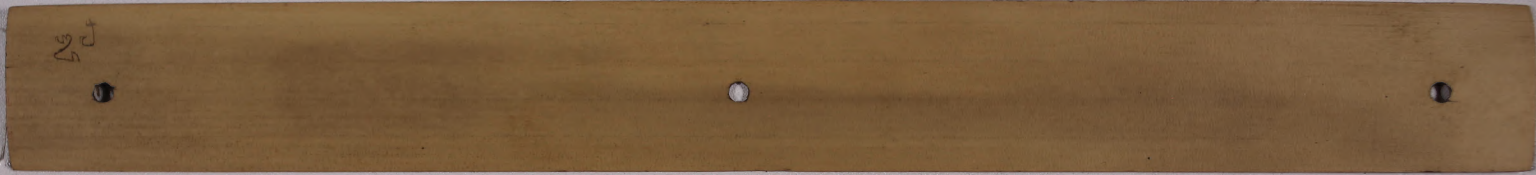
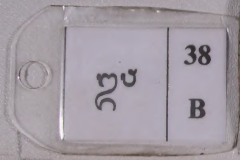
38  
A

Handwritten Balinese script on a palm leaf, consisting of a single line of text.

**SARINING SUNDARI GADHING**

*Pusat Dokumentasi*

*Dinas Kebudayaan Provinsi Bali*



# SARINING SUNDARI GADHING

*Pusat Dokumentasi  
Dinas Kebudayaan Provinsi Bali*

