



**ESTUDIO CASERO (B00)**  
**APERTURA IRREGULAR**  
**POR EL MF JOB SEPÚLVEDA**



**1.e4 a6!?**

ESTADISTICA CHESSBASE

## Informe de aperturas

*1.e4 a6*



B00, 1...a6

1235 Partidas en 'Mega Database 2007'

### 1. Historia

Primera partida:

[Paulsen,L - Schwenkenberg,F 1-0](#)

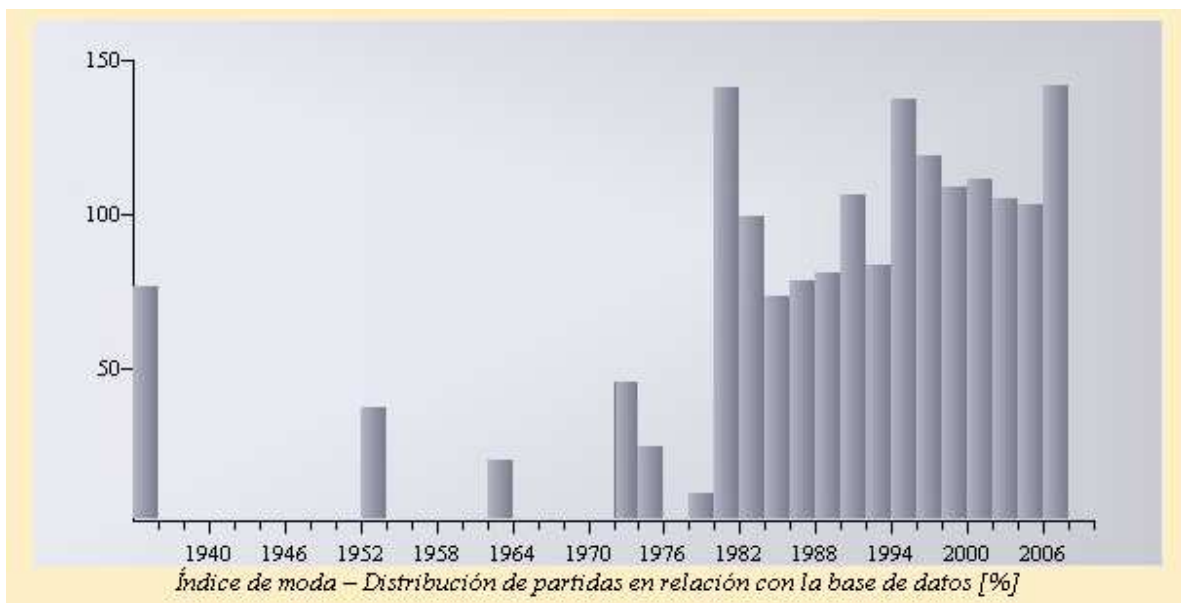
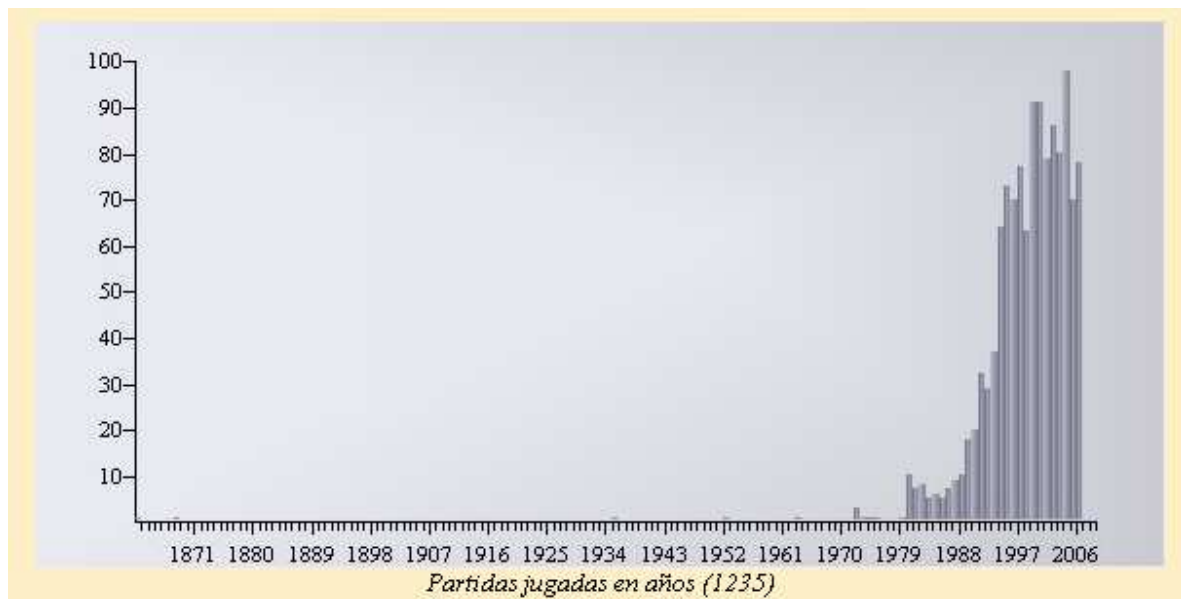
Última partida de gran maestro:

[Rublevsky,S - Drazic,S 1-0](#)

Última partida:

[Freundorfer,J - Chetverik,M ½-½](#)

## Estudio Casero Apertura 1.e4 a6 (B00) - Por el MF Job Sepúlveda



## Estudio Casero Apertura 1.e4 a6 (B00) - Por el MF Job Sepúlveda

### 2. Jugadores

#### a) Fuertes grandes maestros que usaron esta línea como Negras:

<a href="#">Zhang Pengxiang</a>	Resultado=1/1	2004	Elo-Ø: 2567	<a href="#">Partidas: 1</a>
<a href="#">Zdenko Kozul</a>	Resultado=1/1	2002	Elo-Ø: 2565	<a href="#">Partidas: 1</a>
<a href="#">Valerij Popov</a>	Resultado=1/2	2002	Elo-Ø: 2568	<a href="#">Partidas: 2</a>
<a href="#">Vladimir Georgiev</a>	Resultado=0.5/1	1998	Elo-Ø: 2565	<a href="#">Partidas: 1</a>
<a href="#">Gata Kamsky</a>	Resultado=0/1	1994	Elo-Ø: 2695	<a href="#">Partidas: 1</a>

#### b) Otros jugadores notables:

<a href="#">Maxim Chetverik</a>	Resultado=20/34	1998-2006	Elo-Ø: 2330	<a href="#">Partidas: 34</a>
<a href="#">Anna Maria Botsari</a>	Resultado=10/13	1990-2006	Elo-Ø: 2289	<a href="#">Partidas: 13</a>
<a href="#">Detlev Frank</a>	Resultado=7.5/16	1996-2004	Elo-Ø: 1821	<a href="#">Partidas: 16</a>
<a href="#">Leonid Butsenko</a>	Resultado=5/12	2000-2005		<a href="#">Partidas: 12</a>
<a href="#">Olaf Steffens</a>	Resultado=5/19	1994-2005	Elo-Ø: 2306	<a href="#">Partidas: 19</a>

### 3. Estadísticas

Negras puntúa en la media (44%).

Negras rinde Elo 2086 contra una oposición de Elo 2128 (-42).

Blancas rinde Elo 2151 contra una oposición de Elo 2109 (+42).

Ganan blancas: 574 (=46%), Tablas: 238 (=19%), Ganan negras: 423 (=34%)

La tasa de tablas es Muy pocas. (4% tablas rápidas, < 20 Jugadas)

Las victorias con blancas son más cortas que la media (36).

Las victorias con negras son de longitud media (38).

Las tablas son más cortas que la media (37).

Estudio Casero Apertura 1.e4 a6 (B00) - Por el MF Job Sepúlveda

Teoría (\*)

(B00) 1.e4 a6!?



Diagrama 1, Posición después de 1...a6!?

2.d4 b5 3.Ad3 Ab7 4.Cf3 e6 5.Cbd2



Diagrama 2, Posición después de 5.Cbd2

## Estudio Casero Apertura 1.e4 a6 (B00) - Por el MF Job Sepúlveda

[5.De2



Diagrama A, Posición después de 5.De2

5...Cf6 6.a4 c5 7.dxc5 Axc5 8.Cbd2 b4 9.e5 Cd5 10.Ce4 Ae7 11.Ag5! 0-0 12.Cd6 Ac6 13.h4± Volovik – V. E. Kozlov, USSR 1987 – 44/125]



Diagrama B, Posición final Volovik – Kozlov

5...c5

## Estudio Casero Apertura 1.e4 a6 (B00) - Por el MF Job Sepúlveda



Diagrama 3, Posición después de 5...c5

6.c3 d6 7.De2 Cd7 8.Cf1 Cg6 9.Cg3 e5 10.a4 c4 11.Ac2 g6 12.b3½ Marín – Nanu, Romania (ch) 1998 – 74/(94)



Diagrama 4, Posición final Marín – Nanu

(\*) Fuente: Pequeña Enciclopedia de Aperturas (Beograd 2003)

## Estudio Casero Apertura 1.e4 a6 (B00) - Por el MF Job Sepúlveda

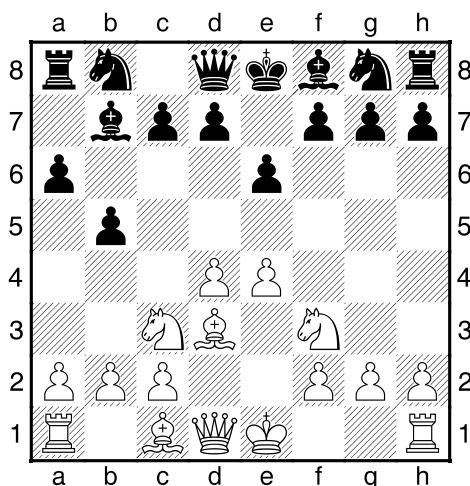
### PARTIDAS MODELOS

#### Steinitz, William – Baker, Jonathan [B00]

GBR tour sim Great Britain, 1868

[ChessBase]

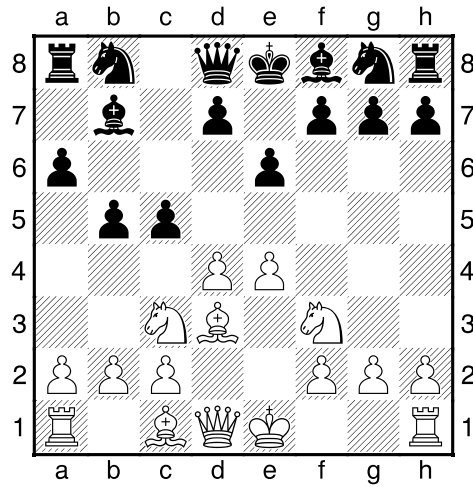
1.e4 a6 2.d4 b5 3.Cf3 Ab7 4.Ad3 e6 [4...d6] 5.Cc3 Diagrama



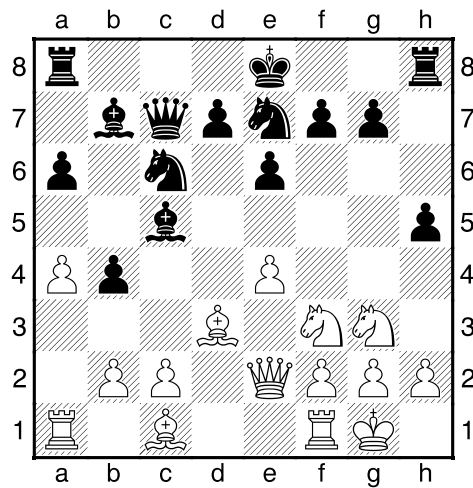
[5.a3; 5.De2; 5.0-0 c5 (5...Cf6 6.Cbd2 --> Scetinin–Kamberin(6.De2 --> Veroci–Pedersen) ) 6.c3 Cf6 (6...cxd4 --> Kauschmann–Brustkern; 6...d6 --> Del Campo–Herrera) 7.Te1 Ae7 --> compare with 138 a) 7...Cc6? 8.d5 Ce7 9.d6 Cg6 10.e5 Axf3 11.Dxf3±; b) 7...h6 8.d5 Δc4 8...c4 9.Ac2 Ac5 ×Δd5; c) 7...Db6 8.a4! (8.Af4 Ae7 9.dxc5 Axc5 10.Ae3 Axe3 11.Txe3 Cg4 12.Te2 Cc6 13.Cbd2 Td8 14.Cf1 0-0 15.Tc1 Cce5 16.Cxe5 Cxe5 17.Ab1 d5! 18.exd5 Txd5 19.De1 Dd6 20.Ce3 Cf3+! 21.gxf3 Tg5+ 22.Cg4 Axf3 23.h3 Axf4 24.hxg4 Txg4+ 25.Rf1 Dh2 0:1 Abayasekera–Basman, Surrey 1980) 8...cxd4 9.cxd4 Cc6 10.axb5 Cb4! 11.Cc3! (11.bxa6 Cxd3 12.Dxd3 Txa6♞) 11...Cxd3 12.Dxd3 axb5 13.Txa8+ Axa8 14.Af4! (14.e5 b4 15.Ca4 Dc6) 14...Ab4 15.Ag5!! 0-0 (15...h6 16.Ah4 g5 17.Ag3) 16.Ce5! ΔΔf6, Δd7 16...Db7 17.Axf6 gxf6 18.Dg3+ Rh8 19.Dh4! → Nicholson–Basman, Cambridge op 1980; 8.Cbd2 (8.a3 h6 9.b4 cxd4 10.cxd4 d5 11.e5 Cfd7 ΔΔb6–c4; 8.a4 c4 9.Ac2 b4 10.Cbd2 d5 11.e5 Cfd7 12.Cf1 Da5 13.Ad2 Cc6↑) 8...Cc6 (8...h6 9.e5 Cd5 Δc5–c4, →« 10.dxc5 Axc5 11.Ce4 Ae7 12.a4 bxa4 13.c4 Cb4 14.Ab1 Dc7 ×Δc4 15.De2 C8c6 ×Δe5 16.Cg3 Ca5↑; 8...cxd4 9.cxd4 Cc6 10.a3 Ca5 11.b3 b4 12.a4 d5!? 13.e5 Ce4 14.Cxe4 dxe4 15.Axe4 Axe4 16.Txe4 Dd5 17.Te3 ×Δb3,d4) 9.e5 a) 9.a4 b4 10.e5 bxc3 (10...Cd5?! 11.c4) 11.exf6 cxd2±; b) 9.Cf1 Db6 10.d5 exd5 11.exd5 Cxd5 12.Cg3 Cc7! 13.Cf5 Ce6± Bradbury–Basman, Borehamwood 1980; 9...Cd5 10.dxc5 Axc5 11.Ce4 Ae7 ΔΔc7 12.a4! a) 12.Ag5 Dc7 (12...f6 Δ13.ef gf 14.Δe5? Δe5 15.♖h5 Δf7 -+) 13.Axe7 Rxe7 14.Cd6 Cxe5 15.Cxb7 Cxf3+ 16.Dxf3 Dxb7 17.Ae4; b) 12.Cd6+ Axd6 13.exd6 Db8 ΔΔd6; 12...Db8 (12...bxa4 13.c4 Cdb4 14.Ab1±) 13.Ag5! f6 (13...Cxe5 14.Cxe5 Dxe5 15.Cf6+--; 13...Af8 Basman) 14.exf6 gxf6 15.Ah4 0-0 16.Ag3 Dd8 17.Cd6 Axd6 18.Axd6 Tf7 Lewis–Basman, London 1980; 5.c3 Cf6 6.Dc2 c5 7.Cbd2 Cc6 8.e5 Cd5 9.Ce4 cxd4 10.Ceg5 (10.Cxd4 Cxd4 11.cxd4 Cb4 ♞) 10...h6 11.Ag6?? hxg5 12.Cxg5 Cxe5 13.Axf7+ Cxf7 14.Dg6 Df6 0:1 Molyneux–Basman, Manchester 1980] 5...c5 Diagrama



**Estudio Casero Apertura 1.e4 a6 (B00) - Por el MF Job Sepúlveda**

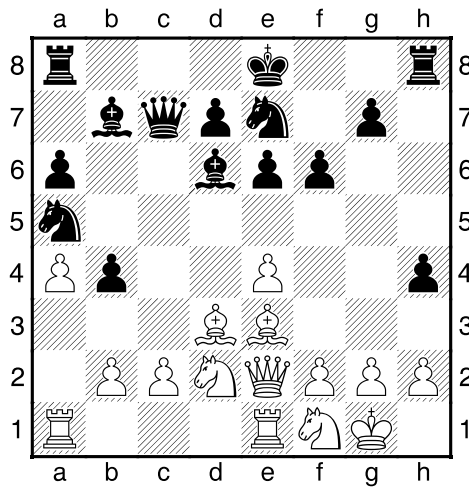


**6.dxc5 Axc5 7.a4 b4 8.Ce2 Cc6 9.0-0 Cge7 10.Cg3 Dc7 11.De2 h5!?± Diagrama**

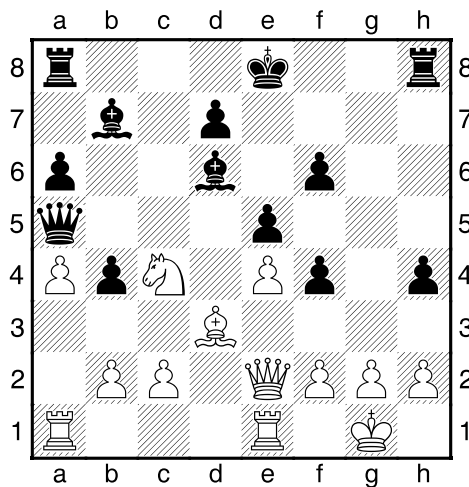


**12.Ae3 Ad6 13.Tfe1 f6 14.Cd2 h4 15.Cgf1 Ca5 Diagrama**

## Estudio Casero Apertura 1.e4 a6 (B00) - Por el MF Job Sepúlveda

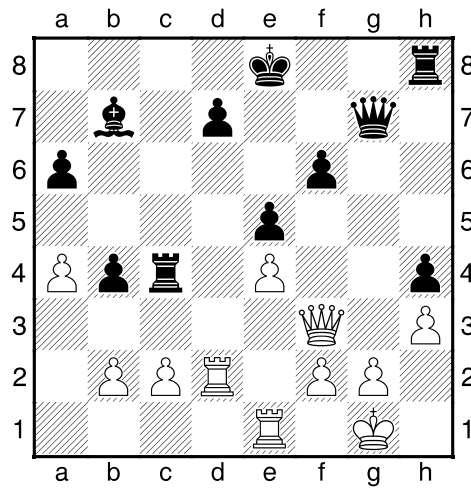


[15...Ce5!? 16.h3 g5!∞] 16.Cb3 g5 17.Ad4 e5 [17...Rf7 18.e5↑; 17...Ae5!?] 18.Ae3 Cg6 [18...h3 19.g3 Cxb3 20.cxb3 Ac5 21.Tac1 d6 22.Ac4 Rf8 23.Ae6 Rg7 24.f3±] 19.Cxa5 Dxa5 20.Cd2 Cf4 21.Axf4 gxf4 22.Cc4± Diagrama

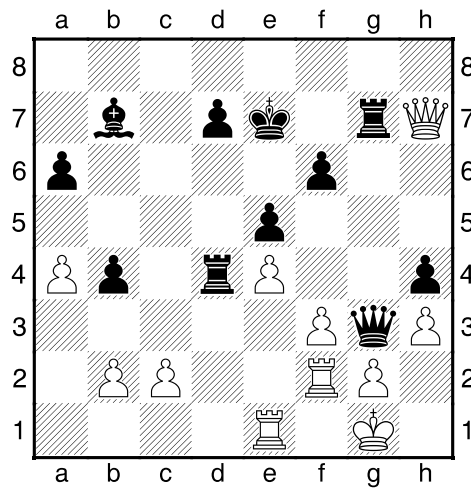


22...Dc5 23.Cxd6+ Dxd6 24.Tad1 De7 25.h3 Dg7 26.Ac4 Tc8 27.Td2?? [27.Ad5? Txc2! 28.Dxc2 f3 29.g3 hxg3-+ →; 27.f3 Tg8 28.Td2 Dg3→] 27...f3 28.Dxf3 Txc4-+ Diagrama

## Estudio Casero Apertura 1.e4 a6 (B00) - Por el MF Job Sepúlveda



29.Df5 Tg8 30.f3 Td4 31.Tde2 Re7 32.Tf2 Dg3 33.Dh7+ Tg7 Diagrama



0-1

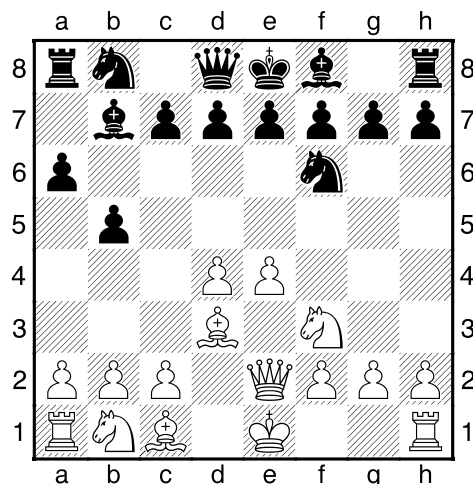
## Estudio Casero Apertura 1.e4 a6 (B00) - Por el MF Job Sepúlveda

**Karpov,Anatoly (2725) – Miles,Anthony J (2545) [B00]**

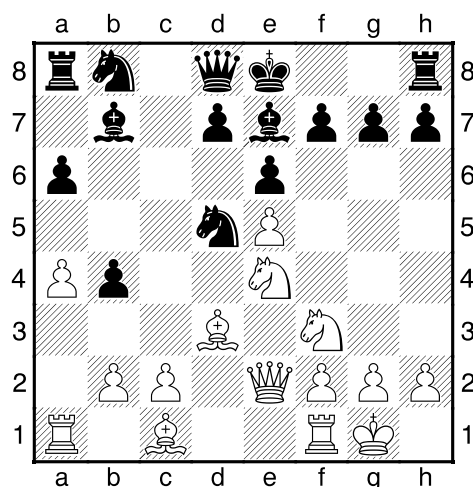
EU–chT (Men) Skara (1), 1980

[ChessBase]

**1.e4 a6 2.d4 b5 3.Cf3 [3.a4!? Ab7 4.axb5?! Axe4! 5.bxa6 Ab7!⇐] 3...Ab7 4.Ad3 Cf6 [Δ4...e6] 5.De2**  
Diagrama

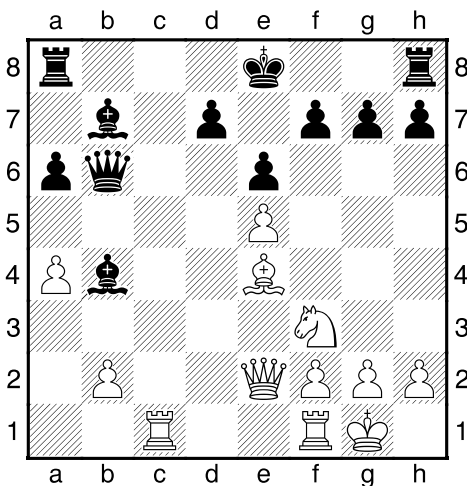


[5.e5 Cd5 6.Cg5!? Δ→; 5.Cbd2] **5...e6 6.a4 [6.Ag5!?; 6.0-0; 6.Cbd2] 6...c5 [6...b4 Miles] 7.dxc5 [7.e5 c4∞; 7.c3 c4 (7...Cc6 8.0-0 cxd4 9.axb5 (9.Cxd4!?!; 9.cxd4 Cb4 10.axb5 Cxd3) 9...axb5 10.Txa8 Dxa8 11.Axb5 (11.cxd4 Cb4; 11.Cxd4 Cxd4 12.cxd4 Axe4⇐; 11.e5 Cd5⇐) 11...Ca7! (11...dxc3 12.Cxc3 Δe5 ×d5) 12.Cxd4 (12.e5 Axf3 13.gxf3 Cxb5 14.exf6 gxf6 15.Dxb5 Tg8+ 16.Rh1 Dxf3#) 12...Axe4 13.Ag5! (13.Cd2 Axc2-+) 13...Ac5! a) 13...Ae7 14.f3∞; b) 13...Axc2 14.Cxe6 ΔΔc7,Δg7 14...fxe6 15.Dxe6+ Ae7 (15...Rd8 16.Dxd7#) 16.Axf6 gxf6 17.Axd7+ ΔΔe1 →; 14.Axf6 (14.f3 Axb1 (14...Cxb5 15.Dxb5 Axd4+ 16.cxd4 Ac6∞) 15.Txb1 Axd4+ 16.cxd4 Cxb5 17.Axf6∞) 14...gxf6 15.Cxe6? fxe6 16.Dh5+ Rd8 17.Dxc5 Cxb5 18.Dxb5 Axc2 19.Td1 Ac6⇐ Kok–Welling, NLD 1981) 8.Ac2 d5 Δb4→⇐] 7...Axc5 8.Cbd2 [8.0-0] 8...b4 9.e5 Cd5 [9...Cg4] 10.Ce4 Ae7 11.0-0?! Diagrama**

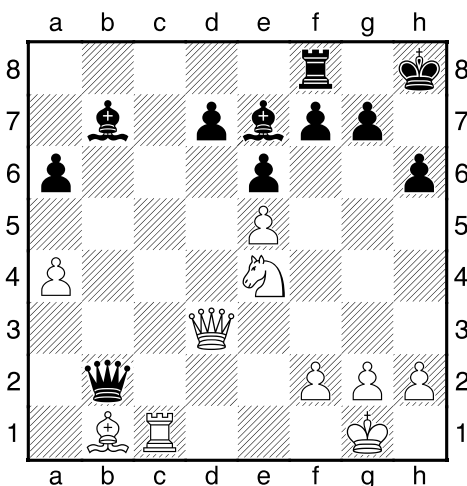


## Estudio Casero Apertura 1.e4 a6 (B00) - Por el MF Job Sepúlveda

[11.Ag5 0-0 (11...f6?! 12.exf6 gxf6? (12...Cxf6±) 13.Ce5!) 12.Cd6 (12.h4!?) 12...Ac6 Δf6 13.De4 (13.h4 f6 14.exf6 gxf6 15.Ce5 fxf5 16.Dh5 Volovik-Kozlov) 13...f5] 11...Cc6 12.Ad2 [12.Ag5 f6! Δ♙c7, 0-0-0 ↑ 13.exf6 gxf6 14.Ah6 Dc7 15.g3 Tg8 16.Tfc1 Ce5 17.Cxe5 Dxe5 Westerinen-Schulz] 12...Dc7 13.c4 [13.Cg3 h5!?] 13...bxc3 14.Cxc3 Cxc3 15.Axc3 Cb4 16.Axb4 Axb4 17.Tac1 Db6 18.Ae4± Diagrama

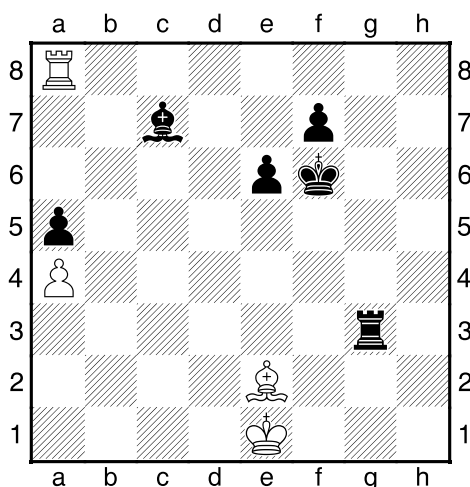


[18.Cg5!? Ae7 (18...h6 19.Dh5 0-0 20.Tc4 Δ♙g4) 19.Dh5 (19.Cxh7 g6 20.Cf6+ Axf6 21.exf6 Dd4±) 19...Axc3 20.Dxc3 0-0-0] 18...0-0 19.Cg5 [19.Axh7+ Rxh7 20.Cg5+ Rg6! (20...Rh6 21.Tc4 Δ♙h4 21...g6 22.Dg4!+-) 21.Dg4 f5 (21...f6!?) 22.Dg3 Dd4∞ 23.h3? Rh5!] 19...h6 20.Ah7+!? [20.Axb7 Dxb7 21.De4=] 20...Rh8 21.Ab1 Ae7 22.Ce4 [22.Dd3 g6±] 22...Tac8 23.Dd3? Txc1 24.Txc1 Dxb2± Diagrama



25.Te1 [25.Tc7 g6 Δ♙c8] 25...Dxe5 26.Dxd7 Ab4 27.Te3 Dd5 28.Dxd5 Axd5 29.Cc3 Tc8 30.Ce2 g5 31.h4 Rg7 32.hxg5 hxg5 33.Ad3 a5 34.Tg3 Rf6 35.Tg4 Ad6 36.Rf1 Ae5 37.Re1 Th8 38.f4 gxf4 39.Cxf4 Ac6 40.Ce2 Th1+ 41.Rd2 Th2 42.g3 Af3 43.Tg8 Tg2 44.Re1 Axe2 45.Axe2 Txg3 46.Ta8 Ac7 Diagrama

## Estudio Casero Apertura 1.e4 a6 (B00) - Por el MF Job Sepúlveda



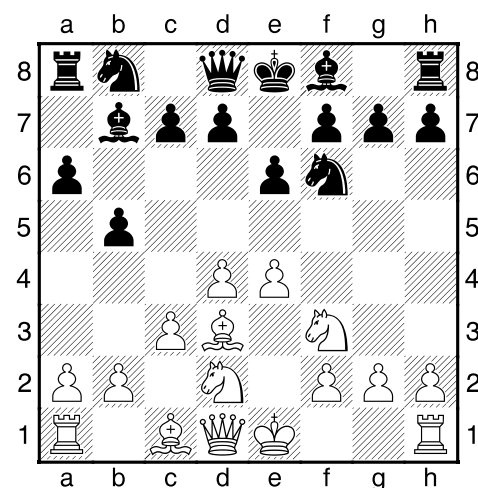
0-1

**Marin, Mihail (2540) – Istratescu, Andrei (2505) [A40]**

Odorheiu Secuiesc zt (7), 1995

[Marin, M]

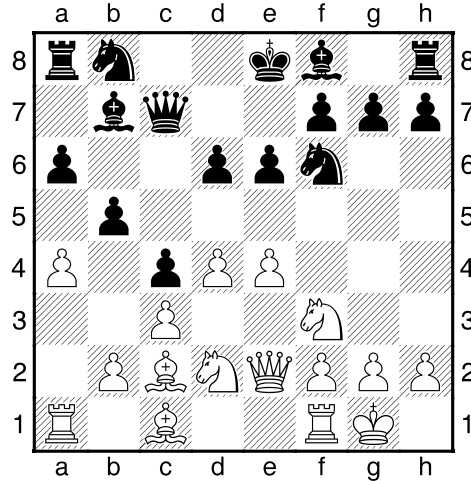
**1.d4 b5 2.e4 a6 3.Ad3 Ab7 4.Cf3 e6 5.Cbd2 Cf6 [RR 5...d6 6.0-0 Cd7 7.c3 Cgf6 8.Te1 Ae7 9.a4 bxa4 10.Dxa4 0-0 11.Cb3 Cb6 12.Da2 Ta7 13.Ca5 Aa8 14.b4 Cfd7 15.De2 c5 16.bxc5 dxc5 17.Ad2 Dc7 18.Axa6 Axe4 19.Dxe4 Txa6 20.Cc6 Zhu Chen–Spassky, B/Copenhagen 1997/CBM 061/1/2-1/2 (51); RR 5...Ce7 6.0-0 Cg6 7.c3 Ae7 8.Te1 0-0 9.a4 bxa4 10.Cc4 c5 11.Dxa4 cxd4 12.cxd4 Cc6 13.Ad2 a5 14.Cxa5 Cxa5 15.Axa5 Dc8 16.Tec1 Ac6 17.Dc2 Cf4 18.d5 Axd5 19.Dd2 Db8 20.exd5 Haba, Z–Zapolskis, A/Usti nad Orlici 2006/CBM 112 ext/0-1 (82)] 6.c3N Diagrama**



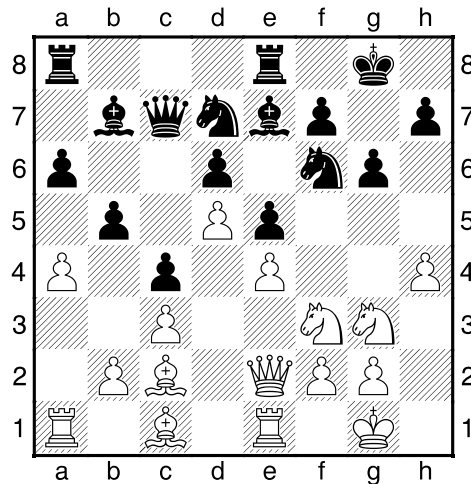
[RR 6.e5 Cd5 7.0-0 Ae7 8.a4 b4 9.Ce4 a5 10.c4 bxc3 11.bxc3 Aa6 12.Axa6 Cxa6 13.c4 Cb6 14.d5 Cxc4 15.d6 cxd6 16.exd6 Af6 17.Cxf6+ Dxf6 18.Ag5 Df5 19.Dd4 Ce5 20.Dxe5 Dxe5 Oll, L–Bogaerts, J/Groningen 1984/EXT 2000/1-0 (41); RR 6.De2 c5 7.c4 bxc4 8.Cxc4 d5 9.exd5 Cxd5 10.0-0 Cc6 11.dxc5 Axc5 12.Cce5 Cxe5 13.Cxe5 Ad6 14.f4 0-0 15.Ae4 Tc8 16.Ad2 f6 17.Cc4 Ac5+ 18.Rh1 f5 19.Af3 Df6 20.Tfe1 Tfe8 Zschaebitz, K–Schmidt, P/Berlin 2005/EXT 2007/1-0 (73)]

## Estudio Casero Apertura 1.e4 a6 (B00) - Por el MF Job Sepúlveda

6...d6 7.0-0 c5 8.De2 Dc7 9.a4 [9.b3!? Ae7 (9...Cbd7? 10.d5 exd5 11.exd5+ Ae7 12.c4±) 10.a4 bxa4 11.Txa4 0-0 12.Ab2 d5↗] 9...c4 [9...bxa4 10.d5! exd5 11.exd5+ Ae7 12.c4±] 10.Ac2± Diagrama



10...Ae7 11.Te1 0-0 12.Cf1 Cbd7 13.Cg3 Tfe8 14.h4 e5?! [14...h6!?!] 15.d5± g6 Diagrama



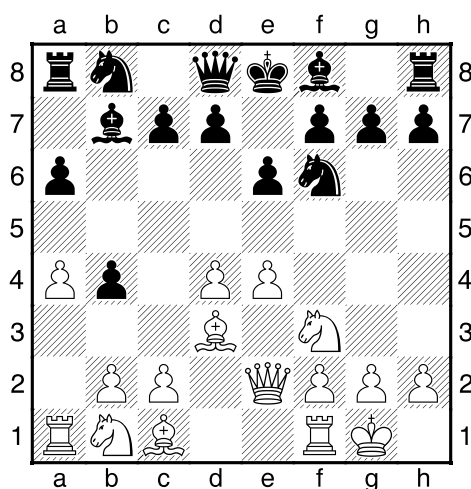
[15...g6 16.h5 Af8 (16...Cc5 17.Ch2 Tab8 (17...Af8 18.Ag5 Ag7 19.Df3 Cfd7 20.Cg4±) 18.f4±) 17.Ch2 Ag7 18.Ag5 h6 19.Ae3±] ½-½

## Estudio Casero Apertura 1.e4 a6 (B00) - Por el MF Job Sepúlveda

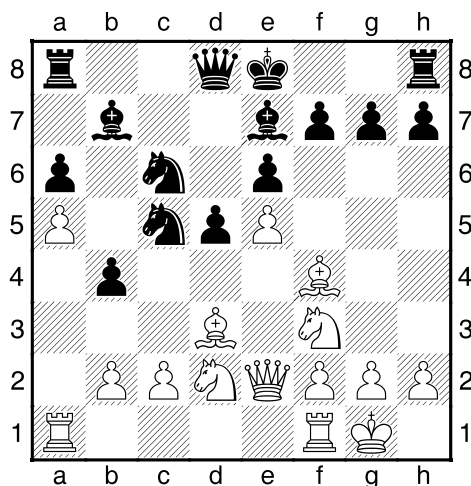
**Movsesian, Sergei (2651) – Popov, Valerij (2568) [B00]**

EU-ch blitz Panormo (9), 02.10.2002

**1.e4 a6 2.d4 b5 3.a4 Ab7 4.Ad3 e6 5.Cf3 Cf6 [RR 5...c5 6.dxc5 Axc5 7.0-0 Ce7 (RR 7...b4 8.Cbd2 d5 9.Cb3 Cd7 10.e5 Dc7 11.a5 Ce7 12.Te1 Cc6 13.Cxc5 Cxc5 14.Ad2 h6 15.De2 Tc8 16.De3 Cd7 17.Df4 g5 18.Dg4 d4 19.Dh5 Re7 20.Cxg5 Cdx5 21.Cxf7 Cxf7 22.Txe6+ Gozzoli, Y–Chetverik, M/La Fere 2006/CBM 113 ext/1-0) 8.Cbd2 bxa4 9.Txa4 Cbc6 10.Cb3 Ab6 11.De2 a5 12.Ae3 Cg6 13.Cc5 Dc7 14.Ab5 Ac8 15.Tc4 Tb8 16.Cd4 Cge7 17.Aa4 0-0 18.Cb5 Dd8 19.Td1 d5 20.exd5 Huebner, R–Federau, J/Berlin 1999/EXT 2000/1-0 (41)] 6.De2 b4 7.0-0N Diagrama**



**[RR 7.e5 Cd5 8.0-0 Ae7 9.c4 bxc3 10.bxc3 c5 11.c4 Cb4 12.Ae4 Dc7 13.Cc3 C8c6 14.d5 Cd4 15.Cxd4 cxd4 16.d6 Dc8 17.Axb7 Dxb7 18.Ce4 Ad8 19.Dg4 Rf8 20.Ta3 h5 21.Df4 d3 Rocha, S–Gomes, J/Portugal 1993/TD/1-0 (37)] 7...Ae7 8.a5 d5 9.e5 Cfd7 10.Af4 c5 11.dxc5 Cc6 12.Cbd2 Cxc5= Diagrama**

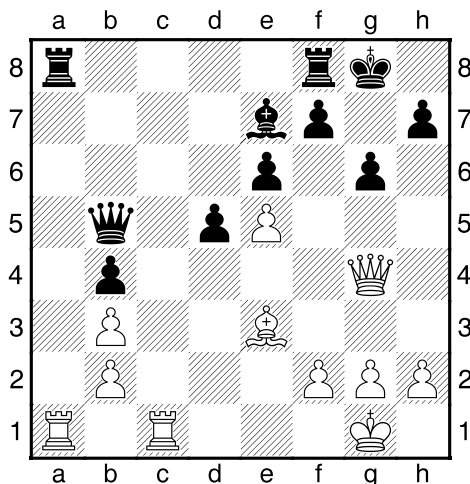


**13.Cb3 Cxb3 [13...Cxd3 14.Dxd3 Dc7 15.Tfe1 Tc8 16.Ad2 0-0 17.Ag5 f6 18.exf6 Axf6 19.Axf6 Txf6 20.Cc5 Ce5 21.Txe5 Dxc5=]**

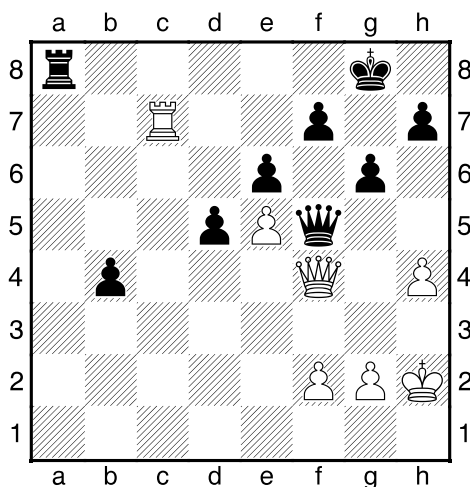


## Estudio Casero Apertura 1.e4 a6 (B00) - Por el MF Job Sepúlveda

14.cxb3 Cxa5 15.Cd4 Cc6 [15...Ac5 16.Cf3 Dc7 17.Cd2 Cc6 18.Tac1 De7=] 16.Cxc6 Axc6 17.Dg4 g6  
18.Axa6 0-0 19.Ae3 Dd7 20.Tfc1 Ab5 21.Axb5 Dxb5= Diagrama

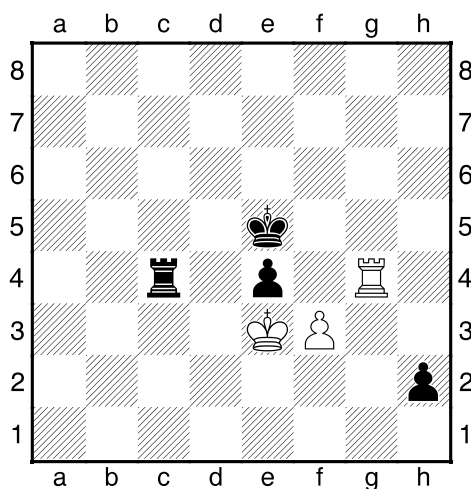


22.Txa8 Txa8 23.h4 Dd3 24.Ac5 Axc5 25.Txc5 Dxb3 26.Tc7 Dxb2 27.Df4 Db1+ 28.Rh2 Df5-+ Diagrama



29.Dd4 Tb8 30.g3 b3 31.Da7 Tf8 32.Dd4 h5 33.Tb7 Dc2 34.Rg2 Tc8 35.Df4 Tf8 36.Dd4 Rg7 37.Df4 b2  
38.Db4 d4 39.Dxb2 De4+ 40.Rh2 Dxe5 41.Td7 Tb8 42.Dxd4 Dxd4 43.Txd4 Tb2 44.Rg2 Tb3 45.Td7 e5  
46.Ta7 Rf6 47.Rf1 Re6 48.Ta6+ Rf5 49.Ta7 Tc3 50.Ta6 Tc2 51.Rg2 f6 52.Tb6 Td2 53.Ta6 e4 54.Rf1 g5  
55.Ta5+ Rg4 56.hxg5 fxg5 57.Te5 Td4 58.Re2 h4 59.gxh4 gxh4 60.Te8 Ta4 61.Tg8+ Rf4 62.Tf8+ Re5  
63.Te8+ Rf6 64.Tf8+ Re5 65.Tg8 Tb4 66.Re3 h3 67.Tg4 Tc4 68.f3 h2 Diagrama

## Estudio Casero Apertura 1.e4 a6 (B00) - Por el MF Job Sepúlveda



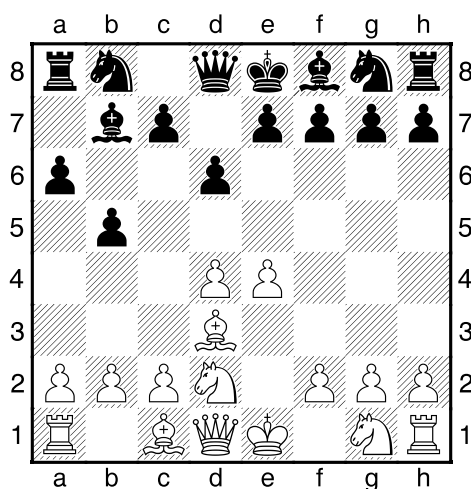
0-1

### Sermek, Drazen (2590) – Kozul, Zdenko (2565) [B00]

Solin g/60' 10th (18), 20.12.2002

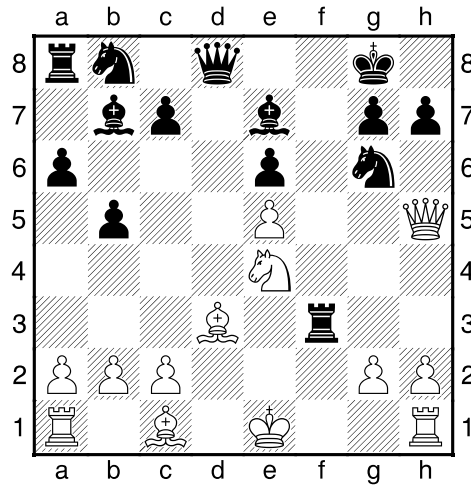
[Mueller, Karsten]

1.e4 a6 2.d4 b5 3.Ad3 Ab7 4.Cd2 d6!? Diagrama

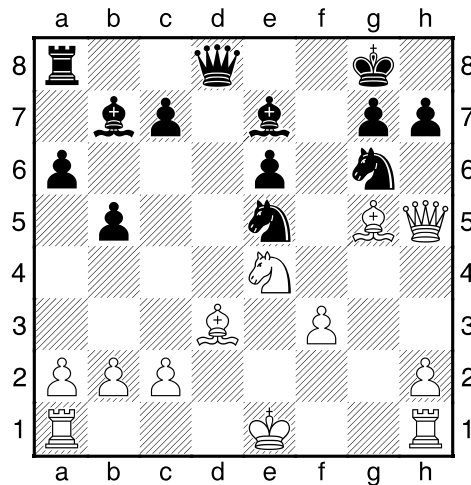


[4...e6 5.f4 (5.c3 d6 6.Ce2 c5 7.0-0 Cd7 8.Cf3 Cgf6 9.Cg3± 0-1 Fuellgrabe, T-Dergatschova Daus, A/GER 1996/EXT 2001 (36)) 5...c5 6.c3 cxd4 7.cxd4 Df6 8.Ce2 Dg6 9.Cg3 (9.0-0!?) 9...h5 10.De2 h4 11.f5 Dg5 12.Cf3 Ab4+ 13.Rd1 Dg4 14.Cf1∞ ½-½ Tokmachev, V-Hapke, R/Budapest 1999/CBM 71 ext (24)] 5.f4 e5 6.dxe5 dxe5 7.fxe5 Ce7 8.e6!? fxe6 9.Dh5+ Cg6 10.Cgf3 Ae7 11.e5 0-0 12.Ce4 Txf3!? Diagrama

## Estudio Casero Apertura 1.e4 a6 (B00) - Por el MF Job Sepúlveda

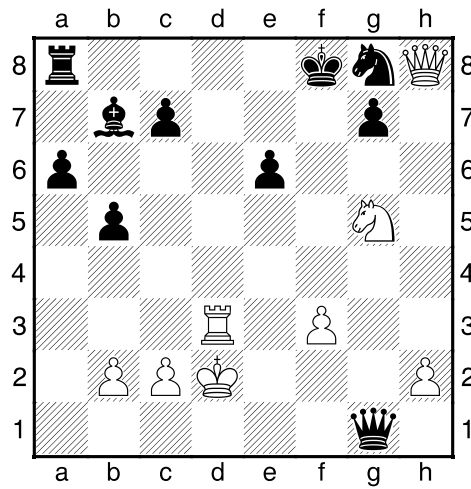


[12...Ab4+?! 13.Re2 De8 (13...Tf5 14.Ceg5 Axf3+ 15.gxf3 Txe5+ 16.Ae4) 14.Rd1] **13.gxf3** [13.Dxf3!? Ab4+ 14.Ad2 Axd2+ 15.Rxd2 Cxe5 16.Dh3±] **13...Cc6** [13...Dd4!? 14.Cf6+ Axf6 15.exf6 Dxf6 16.0-0 Cd7] **14.Ag5?** [14.Cg5 Axc5 15.Axc5 Dd5 16.Ae4 Dc4] **14...Ccxe5**↑ Diagrama

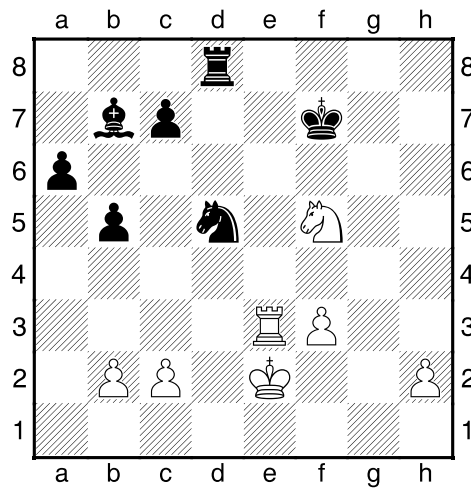


**15.0-0-0 Dd5!** **16.Thg1** [16.Ae2 Dxa2 17.Axe7 Da1+ (17...Axe4? 18.fxe4 Da1+ 19.Rd2 Dxb2 20.Dh3 Cxe7 21.Dxe6+ Rf8 22.Thf1+↑) 18.Rd2 Dxb2 19.Cg5 (19.Ag5 Axe4 20.fxe4 h6→) 19...h6 20.Cxe6 Te8→] **16...Cxd3+** **17.Txd3?** [17.cxd3 Ad6 18.Rb1] **17...Dxa2** **18.Axe7 Da1+** **19.Rd2 Dxc1** **20.Cg5 Cxe7?** [20...Df2+ 21.Rd1 Dh4 22.Dxh4 Cxh4 23.Cxe6 Cxf3 24.Cxc7 Tc8] **21.Dxh7+ Rf8** **22.Dh8+?** [22.Dh5 Rg8 23.Df7+ Rh8 24.Dh5+=] **22...Cg8+** Diagrama

## Estudio Casero Apertura 1.e4 a6 (B00) - Por el MF Job Sepúlveda



23.Cxe6+ Re7 24.Te3 Cf6 25.Dxg7+ Dxg7 26.Cxg7+ Rf7 27.Cf5 Td8+ 28.Re2 Cd5 Diagrama



0-1

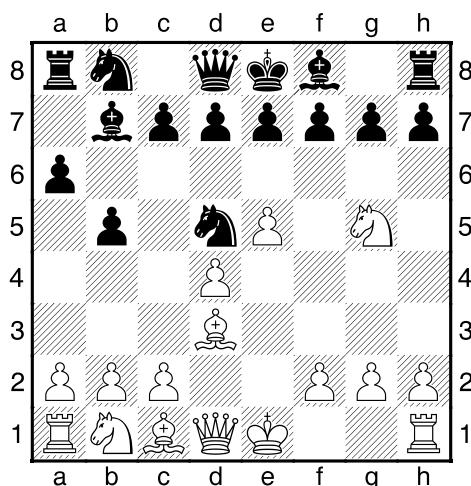
## Estudio Casero Apertura 1.e4 a6 (B00) - Por el MF Job Sepúlveda

Handke, Florian (2467) – Poley, Vladimir (2402) [B00]

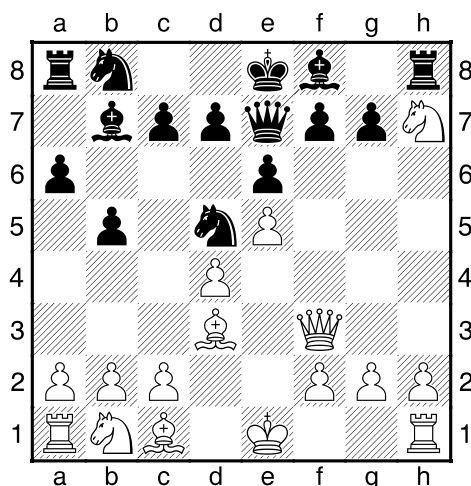
Rilton Cup 34th Stockholm (4), 30.12.2004

[Aagaard]

1.d4 b5 2.e4 a6 This opening is the cradle of Black's original problems. 3.Cf3 Ab7 4.Ad3 Cf6 [4...e6 followed by...c5 is probably sounder] 5.e5 Cd5 6.Cg5! Diagrama

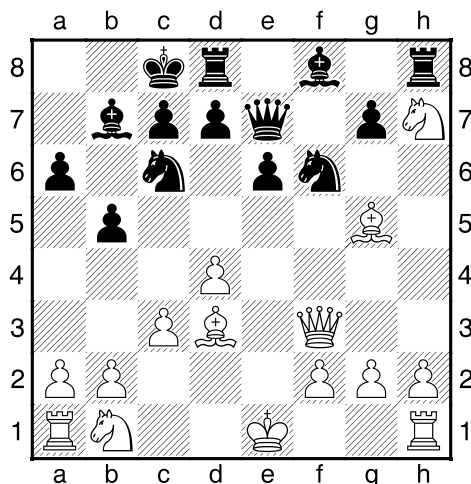


A nice move. 6...e6 7.Df3 [7.Cxh7 Dh4 8.Cxf8 Tx8 is not entirely clear] 7...De7? [This loses a pawn for nothing. After 7...f5 there are some tactics: 8.exf6 Dxf6 9.Axh7 Ab4+ 10.c3 Dxf3 11.Ag6+ Rf8 12.Cxf3 Ce7 13.Ad3 Axf3 14.gxf3 Ad6 15.h4 and White has an extra pawn, but also a wrecked pawn structure] 8.Cxh7! Diagrama

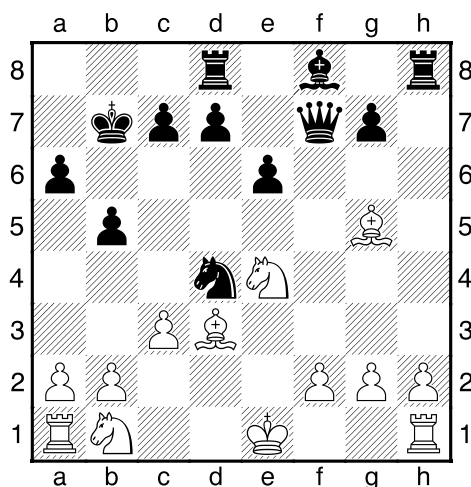


8...Cc6 9.c3 0-0-0!? 10.Ag5? [10.De2 followed by ♖xf8 is just a pawn up] 10...f6 11.exf6 Cxf6? Diagrama

## Estudio Casero Apertura 1.e4 a6 (B00) - Por el MF Job Sepúlveda

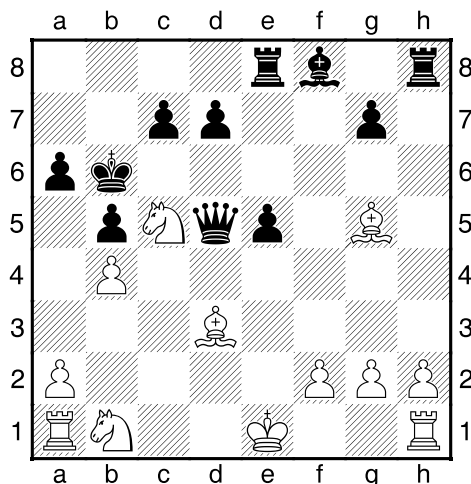


[11...gxf6! would give Black enough counterplay. 12.Cxf6 Ah6! 13.Axh6 Cxf6 14.Ag5 Cb4! 15.Dg3 Cxd3+ 16.Dxd3 Tdg8 and I prefer the Black pieces] **12.Cxf6 Cxd4?** This should lose instantly. [12...Ce5!? 13.Dxb7+ Rxb7 14.dxe5 Th5 15.h4 Txg5 16.hxg5 gxf6 17.gxf6 Dc5 18.Ae4+ Rb8 19.Th5 and White looks better, though the position is not completely clear] **13.Dxb7+??** It is tempting to sacrifice the queen, of course, but it is definitely not good. Now the position becomes unclear again. [13.Df4! Axc2 14.Dxd4 Axh1 15.Ce4+-] **13...Rxb7 14.Ce4 Df7** Diagrama

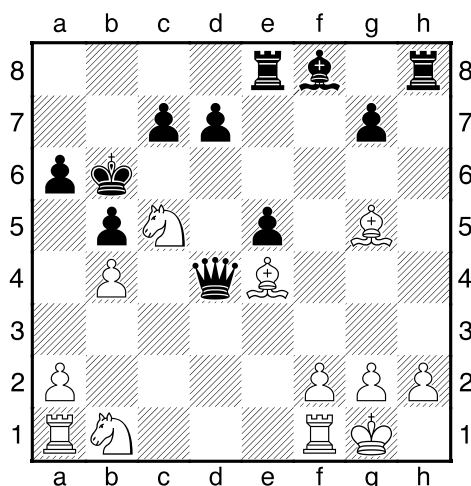


[Why not flick in a check? 14...Cf3+! 15.gxf3 Df7 followed by...e7 with chances for both sides] **15.cxd4 Te8 16.Cc5+ Rb6!?** Seems reckless. Safer was [16...Rc8 based in 17.Cxa6 e5! However this push will come no matter what, so White's advantage is not that great. Best is 17.d2 to prepare for queenside castling] **17.b4?!** Too slow. White should not care for a pawn, but instead go for the Black king with [17.0-0 e5 18.a4 exd4 19.b4 with an attack, though nothing is clear] **17...e5 18.d5** [18.dxe5 Txe5+ 19.Ae3 Axc5 20.bxc5+ Rc6 with unclear chances was better] **18...Dxd5?!** Diagrama

## Estudio Casero Apertura 1.e4 a6 (B00) - Por el MF Job Sepúlveda

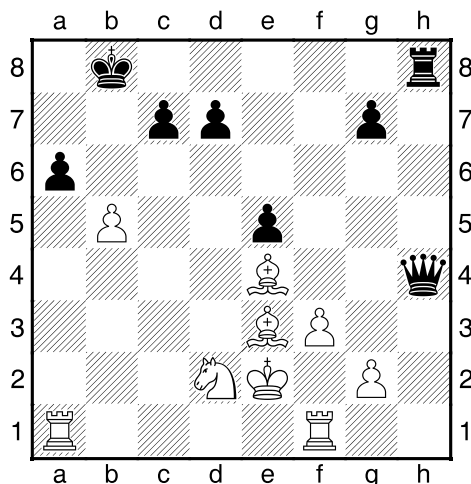


This opens up for the White bishops. Better was [18...e4! 19.Ac2 Dxd5 20.Ae3 Axc5 21.bxc5+ Rb7 with chances for both sides] 19.Ae4 Dd4 20.0-0!± Diagrama



Maybe Black overlooked this? 20...Axc5? Now White once again gets time to create a serious initiative, and this time he does not fail. Better was 20...d5 or [20...Dxa1!? 21.Ae3 Ra7 22.Cb3+ Dd4 and the endgame is only a little worse for Black] 21.bxc5+ Ra7 22.Cd2 Rb8 [22...Da4 was potentially better, but eventually the White pieces will get coordinated and the Black king will be unable to survive the attack] 23.a4 Dxc5 [23...b4 looks as if the queen is trapped after 24.Ae3 Db2 25.Tfb1 Dc3 26.Tc1 Db2 but maybe this is not the case. Instead White can use it to get rid of his own obstructive a-pawn and win easily that way: 27.Tab1 Da3 28.Cc4 Dxa4 29.Ta1 Db3 30.Txa6 c6 31.Tca1 and Black is mated] 24.Ae3+- De7 25.axb5 Now it is all over. 25...Txb5 26.Rxb5 Th8+ 27.Rg1 Dh4 28.f3 Dh2+ 29.Rf2 Dh4+ 30.Re2 Diagrama

## Estudio Casero Apertura 1.e4 a6 (B00) - Por el MF Job Sepúlveda

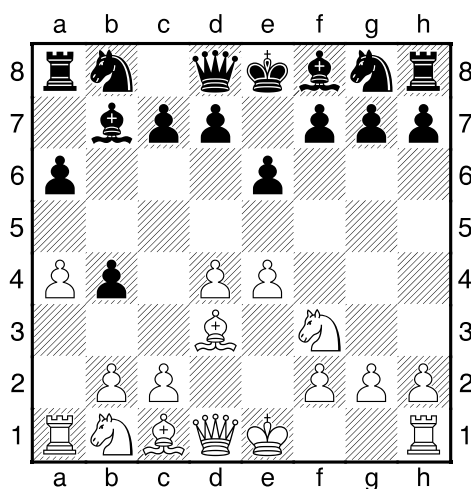


1-0

**Sax, Gyula (2400) – McKay, Roderick M (2330) [B00]**

Norwich U18 (10), 07.04.1972

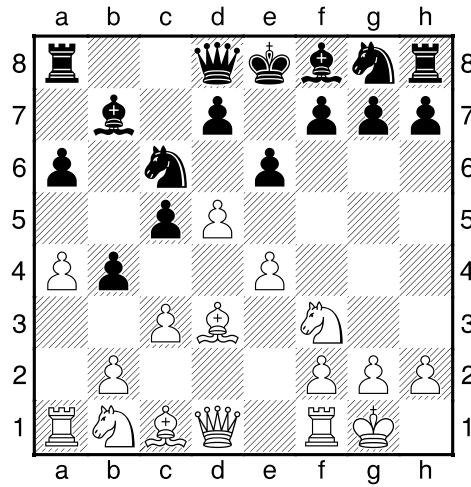
1.e4 a6 2.Cf3 b5 3.d4 Ab7 4.Ad3 e6 5.a4 b4 Diagrama



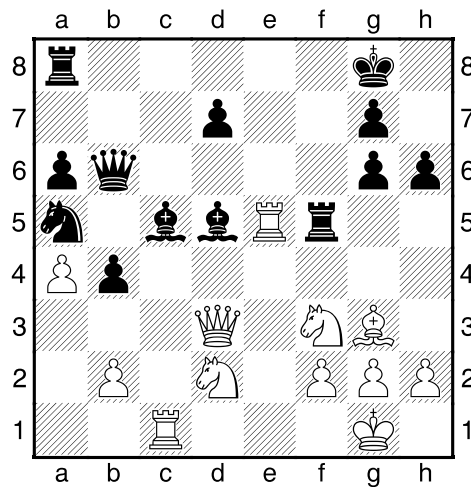
[RR 5...c5 6.c3 c4 7.Ac2 Cf6 8.De2 (RR 8.e5 Cd5 9.Cg5 d6 10.axb5 dxe5 11.bxa6 Ae7 12.Dh5 Axf5 13.Axf5 Dc7 14.0-0 Txa6 15.Ca3 Cd7 16.dxe5 h6 17.Ad2 Cxe5 18.Cb5 Db8 19.Txa6 Axa6 20.Te1 Axb5 21.Txe5 Dd6 22.Te1 Dd7 Jirka,J-Biolek,R/Olomouc 2006/CBM 113 ext/0-1 (46)) 8...Ae7 9.0-0 Cc6 10.Ca3 d5 11.e5 Cd7 12.b4 cxb3 13.Axb3 b4 14.cxb4 Cxb4 15.Ad2 0-0 16.Tab1 a5 17.Cb5 Aa6 18.Tfc1 Tb8 19.Axb4 axb4 20.Tc6 Lazarev,V-Tomescu,V/Arco 2000/EXT 2001/1-0 (42)] **6.0-0 c5 7.c3N** [RR 7.Cbd2 d6 8.dxc5 dxc5 9.De2 Ce7 10.Cc4 Cg6 11.e5 Cd7 12.Ae4 Dc7 13.Td1 Tb8 14.h4 Axe4 15.Dxe4 h5 16.Ag5 Cb6 17.Td2 Ae7 18.Axe7 Rxe7 19.Cd6 Cd7 20.Cxf7 1-0 Baramidze,D-Heinzel,O/Essen 2002/CBM 088 ext] **7...Cc6 8.d5±** Diagrama



## Estudio Casero Apertura 1.e4 a6 (B00) - Por el MF Job Sepúlveda

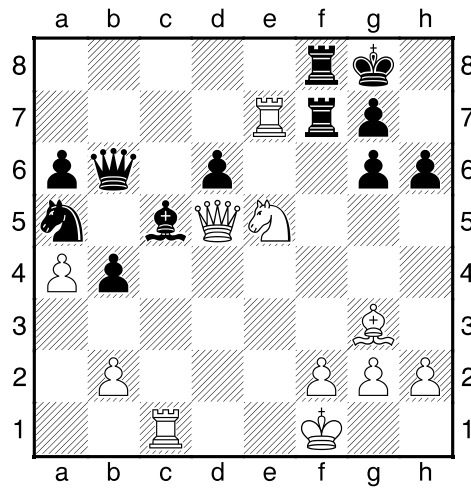


8...Ca5 9.cxb4 cxb4 10.Te1 [10.Ae3 Cf6 11.Cbd2 exd5 12.e5 Ce4 13.Te1] 10...Ac5 11.Ag5 Db6 12.De2 Ce7 13.Cbd2 h6 14.Ah4 [14.Axe7! Axe7 15.Ce5 Dd6 16.Cec4 Cxc4 17.Cxc4 Df4 18.Cb6± 0.82/8] 14...0-0 15.Tac1 [15.Ce5!?] 15...Cg6 16.Ag3 exd5 17.exd5 Axd5 18.Axg6 fvg6 19.Dd3 Tf5?! [19...Af7 20.Ce5 Tad8 21.Cxf7 Txf7 22.Ce4 d6 23.Dd5 Cb7 24.Rh1 b3 25.De6 Db4 26.Cxc5 Cxc5=; 19...Axf3!? 20.Cxf3 Rh7=] 20.Te5± Diagrama

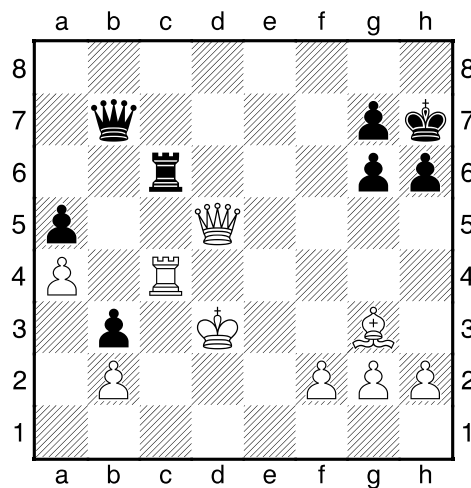


20...Axf3 21.Cxf3 Tc8 22.Rf1 Tf7 23.Dd5 d6 24.Te7 Tcf8 25.Ce5!+- Diagrama

## Estudio Casero Apertura 1.e4 a6 (B00) - Por el MF Job Sepúlveda



25...dxe5 26.Txc5 Rh7 27.Txf7 Txf7 28.Txa5 Tc7 29.Dxe5 Tc1+ 30.Re2 Tc6 31.Rd3 b3 32.Td5 Db4 33.Td4 Db7 34.Dd5 a5 35.Tc4 Diagrama



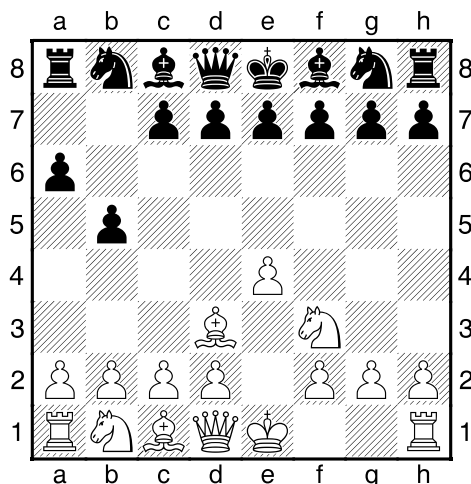
1-0

## Estudio Casero Apertura 1.e4 a6 (B00) - Por el MF Job Sepúlveda

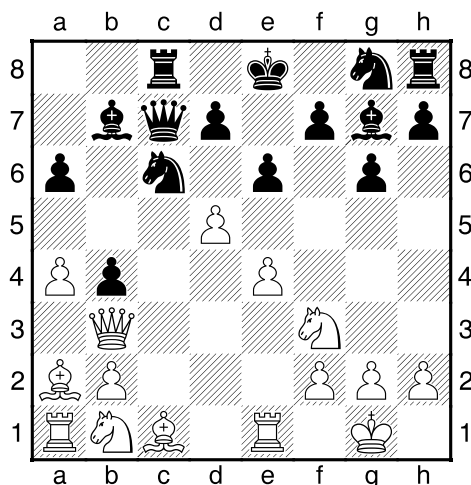
**Stripunsky,Alexander (2495) – Hosticka,Frantisek (2265) [B00]**

Ceske Budejovice op (5), 1995

**1.e4 a6 2.Cf3 b5 [RR 2...g6 3.g3 d5 4.exd5 Dxd5 5.Cc3 Dd8 6.Ag2 Cf6 7.0-0 Ag7 8.Te1 0-0 9.d4 c6 10.Ag5 h6 11.Axf6 Axf6 12.Ce4 Ag7 13.c3 Cd7 14.Db3 Rh7 15.Te2 a5 16.Tae1 a4 17.Dc2 Shchukin,D–Kornev,A/St Petersburg 2001/CBM 082 ext/0-1 (86)] 3.Ad3N Diagrama**

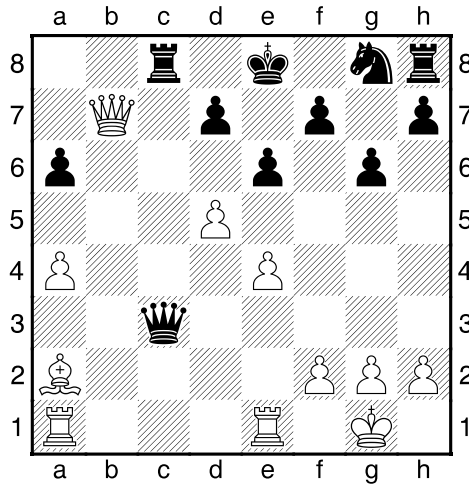


**[RR 3.g3 Ab7 4.d3 Cf6 5.Ag2 e6 6.0-0 c5 7.Cbd2 Ae7 8.Te1 d6 9.Cf1 Cbd7 10.h4 Db6 11.C1h2 c4 12.Ae3 Dc7 13.Ag5 h6 14.Ad2 Cc5 15.e5 dxe5 16.Cxe5 Axb7 17.Rxb7 Welzel,W–Lachmuth,M/Steinfurt 2006/EXT 2006/0-1; RR 3.d3 Ab7 4.Ae2 e6 5.a3 Cf6 6.Cc3 c5 7.Ag5 Ae7 8.0-0 d6 9.e5 dxe5 10.Cxe5 Cbd7 11.Cxd7 Dxd7 12.Af3 0-0 13.Te1 Tab8 14.Axb7 Txb7 15.Df3 Tfb8 16.Af4 Ad6 17.Ce4 Cxe4 Boeckmann,D–Lachmuth,M/Germany 2004/EXT 2006/1-0] 3...Ab7 4.0-0 [4.a4 e6 5.axb5 axb5 6.Txa8 Axa8 7.Axb5 Axe4 8.d3 Axf3 9.Dxf3 Cf6±] 4...c5 5.c3 g6 [5...d5 6.exd5 Axd5 7.Ac2 Cf6 8.d4 e6 9.Ae3 Dc7 10.Cbd2 Cbd7±] 6.Te1 Cc6 7.a4 b4 [7...Db6!? 8.axb5 axb5 9.Txa8+ Axa8 10.Ca3 b4 11.Cc4 Da7 12.Ae2 Ag7 13.Ce3±] 8.Ac4 Ag7 9.d4 cxd4 10.cxd4 Dc7 11.Aa2 [11.Ae3 Tc8 12.Cbd2 Ch6 13.h3 0-0 14.Tc1±] 11...Tc8 12.Db3 e6 13.d5± Diagrama**

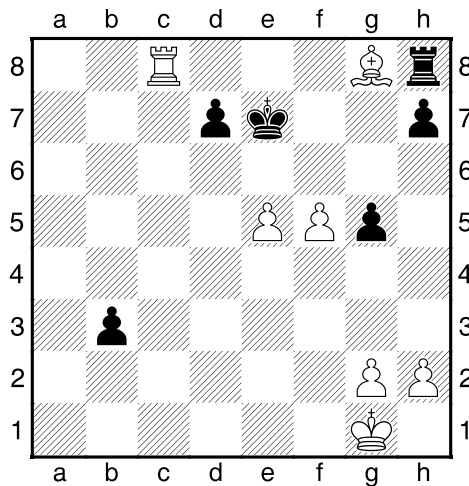


## Estudio Casero Apertura 1.e4 a6 (B00) - Por el MF Job Sepúlveda

13...Cd4 14.Cxd4 Axd4 15.Dxb4 Dxc1? [15...Ae5 16.f4 a5 17.Dd2 Dc5+ 18.Rh1 Ag7 19.Cc3 Ce7 20.dxe6 dxe6 21.e5; 15...Dc5 16.Dxc5 Txc5 17.Cd2+--] 16.Cc3! Axc3 17.bxc3 Dxc3 18.Dxb7+- Diagrama



18...a5 19.dxe6 fxe6 20.Tad1 Dc7 21.Db2 Dc3 22.Db5 Dc6 23.De5 Dc3 24.Dd6 Tc7 25.Df4 Tc5 26.Tc1 De5 27.Dxe5 Txe5 28.f4 Th5 29.Tc8+ Re7 30.Tb1 g5 31.f5 Th4 32.e5 Txa4 33.Axe6 Tb4 34.Txb4 axb4 35.Axg8 b3 Diagrama

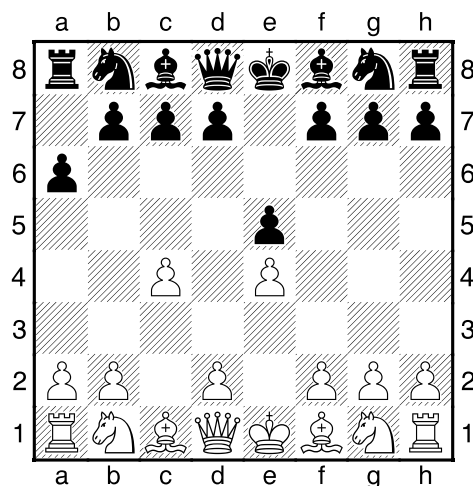


## Estudio Casero Apertura 1.e4 a6 (B00) - Por el MF Job Sepúlveda

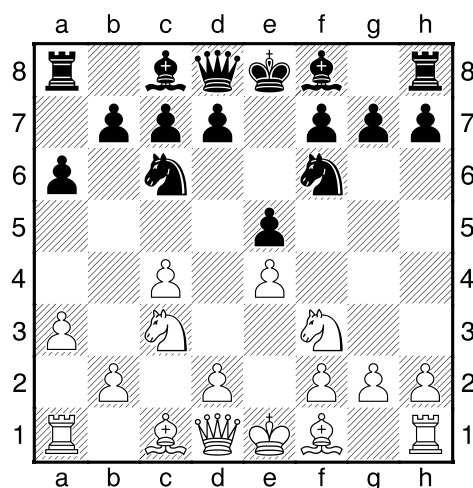
Rojas Sepulveda, Eduardo (2315) – Outerelo Ucha, Manuel (2245) [B00]

Mondariz op, 1996

1.e4 a6 2.c4 e5 Diagrama



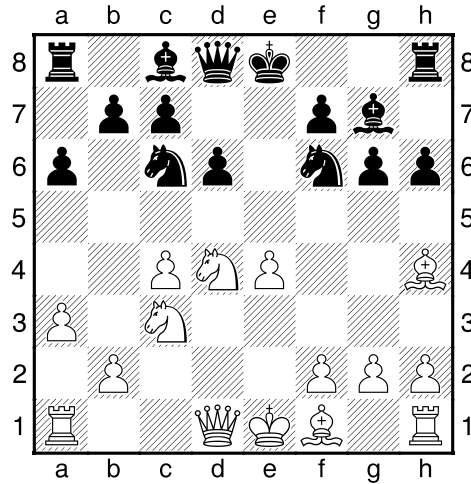
[RR 2...Ta7 3.d4 b6 4.Cc3 e6 5.Cf3 Ce7 6.Ad3 d5 7.exd5 exd5 8.0-0 dxc4 9.Axc4 b5 10.Ab3 f6 11.Te1 c6 12.Af4 Af5 13.d5 cxd5 14.Axb8 Dxb8 15.Dxd5 Ac8 16.Cd4 b4 17.Tad1 Sanchez Romero,M–Carbonell Bofill,C/Barbera del Valles 2006/CBM 113 ext/1-0] **3.Cf3** [RR 3.Cc3 Cf6 4.g3 Cc6 5.Ag2 g6 6.Cge2 Ag7 7.0-0 0-0 8.f4 exf4 9.gxf4 d6 10.d4 Ag4 11.d5 Ce7 12.Ae3 Ch5 13.Ad4 Dd7 14.Axg7 Cxg7 15.Dd3 Axe2 16.Cxe2 f5 17.e5 dxe5 Wahls,M–Schulz,K/Binz 1995/CBM 050 ext/1-0 (32)] **3...Cc6 4.Cc3 Cf6 5.a3N** Diagrama



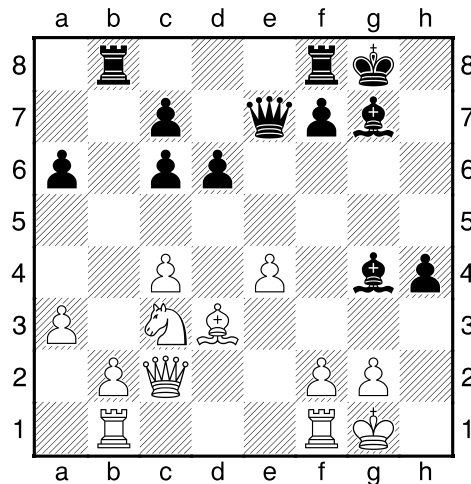
[RR 5.d4 Ab4 6.Dd3 exd4 7.Cxd4 Ce5 8.Dc2 d6 9.f4 Axc3+ 10.Dxc3 Cg6 11.Ad3 0-0 12.0-0 Te8 13.Dc2 De7 14.Cf5 Axf5 15.exf5 Cf8 16.Ad2 c6 17.Tae1 Dc7 18.Ae3 C8d7 19.Ad4 Tad8 Hajdu,I–Chetverik,M/Aggtelek 2002/EXT 2004/½-½ (51); RR 5.Ae2 Ab4 6.0-0 0-0 7.d3 Te8 8.a3 Ac5 9.b4 Ad4 10.Cxd4 Cxd4 11.f4 d6 12.f5 c6 13.g4 a5 14.Tb1 axb4 15.axb4 b5 16.g5 Cd7 17.cxb5 Cxb5 18.Cxb5 Db6+ 19.Rh1 Dxb5 Szumilas,P–Swiczar,M/Wroclaw 2004/EXT 2007/0-1 (37)]

## Estudio Casero Apertura 1.e4 a6 (B00) - Por el MF Job Sepúlveda

5...g6 [5...Ac5!? 6.Cxe5 0-0 7.Cf3 Te8 8.d3 d6 9.Ae3 Axe3 10.fxe3 Cg4 11.Dd2 Ca5∞] 6.d4 exd4 7.Cxd4 d6 [7...Ag7!?!] 8.Ag5 [8.Cxc6!?! bxc6 9.Ae2 De7 10.0-0 Ag7 11.Ag5 0-0 12.Da4 De8 13.c5!±] 8...h6 9.Ah4 Ag7= Diagrama

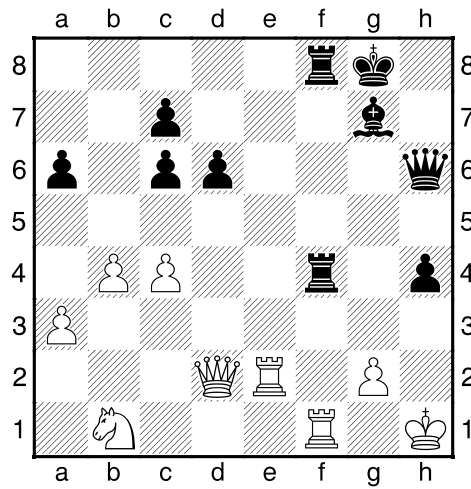


10.Ae2 0-0 11.0-0 g5 12.Cxc6 [12.Ag3 Cxe4!±] 12...bxc6 13.Ag3 Tb8 14.Tb1 De7 15.Ad3 Cg4! 16.Dc2?! [16.c5!?!] 16...h5 17.h3 h4 18.Axh4 gxh4 19.hxg4 Axc4 Diagrama

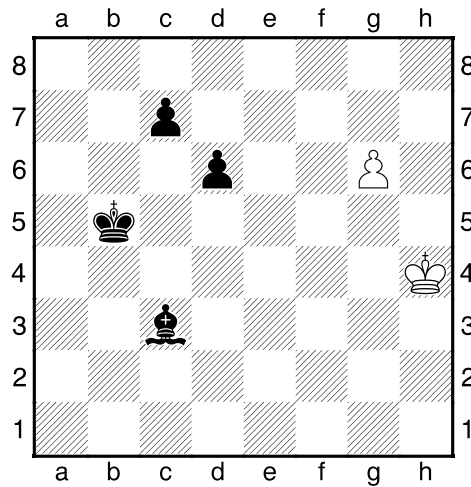


20.f4 Df6 [20...Ad4+ 21.Rh1 f5 22.exf5 h3 23.gxh3 Axh3 24.Tbe1 Dh4 25.Dh2 Txb2-+] 21.Rh1 Dh6 22.Ae2 Ad7 23.b4 Tbe8 24.Tb3 f5 25.exf5 Axf5 26.Dd2 Ad7 27.Cb1 Te4 28.Tbf3 Ag4 29.T3f2 Axe2 30.Txe2 Texf4-+ Diagrama

## Estudio Casero Apertura 1.e4 a6 (B00) - Por el MF Job Sepúlveda



31.Txf4 Dxf4 32.Dxf4 Txf4 33.Cd2 Rf7 34.Te4 Txe4 35.Cxe4 Rg6 36.Rh2 Rf5 37.Cd2 Ab2 38.Cb3 Re4  
 39.a4 Ac3 40.b5 cxb5 41.cxb5 a5 42.Rh3 Rd3 43.Cc1+ Rd2 44.Cb3+ Rc2 45.Cxa5 Axa5 46.Rxh4 Rb3  
 47.g4 Rxa4 48.g5 Rxb5 49.g6 Ac3 Diagrama



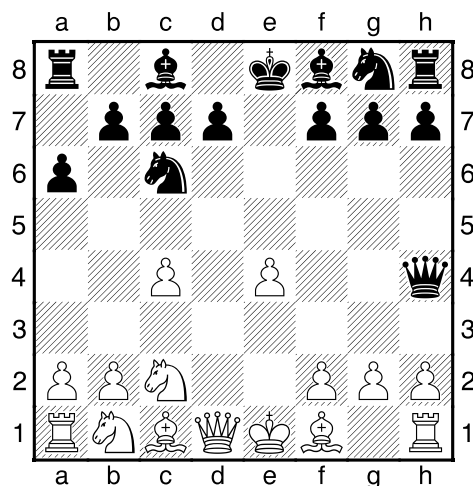
0-1

## Estudio Casero Apertura 1.e4 a6 (B00) - Por el MF Job Sepúlveda

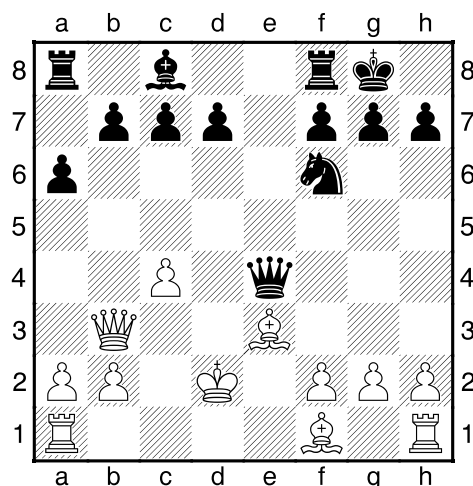
Werner,Dimo (2376) – Chetverik,Maxim (2408) [B00]

Budapest FS08 IM (6), 07.08.2003

1.e4 a6 2.c4 e5 3.Cf3 Cc6 4.d4 exd4 5.Cxd4 Dh4 6.Cc2N Diagrama



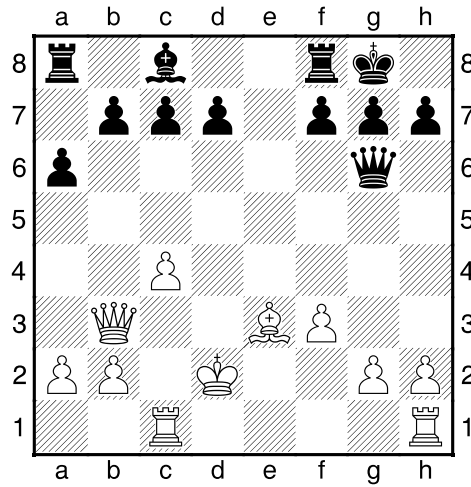
[RR 6.Cxc6 Dxe4+ 7.Ae2 dxc6 8.0-0 Cf6 9.Cc3 Dh4 10.g3 Dh3 11.Te1 Ae6 12.Ag5 h5 13.Axf6 gxf6 14.Dd4 Ae7 15.Ce4 h4 16.Ag4 Axf4 17.Cxf6+ Rf8 18.Dxg4 hxg3 19.Cd7+ Re8 20.Cf6+ Rf8 Marelli,M-Crippa,G/Monza 2005/EXT 2007/1½-½; RR 6.Cf3 Dxe4+ 7.Ae2 Ab4+ 8.Cbd2 Cf6 9.0-0 De7 10.Cb3 Dd8 11.Cbd4 Ae7 12.Cf5 0-0 13.Ag5 d6 14.Cxe7+ Dxe7 15.Te1 h6 16.Ah4 Ce5 17.Af1 Dd8 18.Dd4 Cg6 19.Tad1 Cxh4 20.Dxh4 Ad7 Ginsburg,N-Kutuzov,D/Benidorm 2003/CBM 097 ext/0-1 (55)] 6...Dxe4+ 7.Ae3 Cb4! 8.Cxb4 Axb4+ 9.Cd2 Cf6 10.Db3 Axd2+ 11.Rxd2 0-0 Diagrama



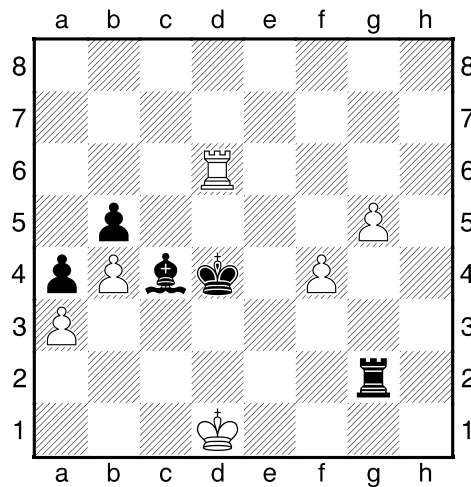
12.Ad3 De6 [12...Dxg2 13.Tag1 Df3 14.Ah6 Dxf2+ 15.Rc1 Ce8 16.Dc3 f6] 13.Tac1?! Ce4+ 14.Axe4 Dxe4 15.f3 Dg6+ Diagrama



## Estudio Casero Apertura 1.e4 a6 (B00) - Por el MF Job Sepúlveda



16.g4 b6 17.c5 Ab7 18.cxb6 cxb6 19.Thf1 [19.Dxb6 Ac6 20.Thf1 a5 21.Dd4 De6 22.b3 a4 23.Dd3 axb3 24.axb3 Tfe8+] 19...b5 20.Dd3 De6 21.b3 Ac6 22.Dd4 a5 23.Tc5 Tfe8 24.f4 De4 25.Dxe4 Txe4 26.Te5 f6 27.Txe4 Axe4 28.Tc1 Ac6 29.a3 Te8 30.Tc5 a4 31.b4 Rf7 32.h4 g6 33.g5 Te4 34.Tc1 fxg5 35.hxg5 Ad5 36.Tc8 Ac4 37.Th8 d5 38.Txh7+ Re6 39.Tg7 d4 40.Txg6+ Rd5 41.Ag1 Te2+ 42.Rd1 Tg2 43.Axd4 Rxd4 44.Td6+ Diagrama



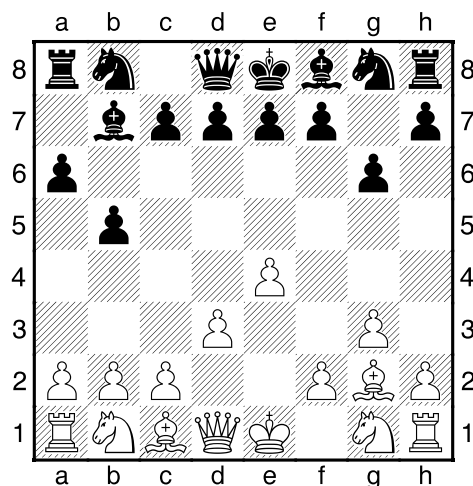
0-1

## Estudio Casero Apertura 1.e4 a6 (B00) - Por el MF Job Sepúlveda

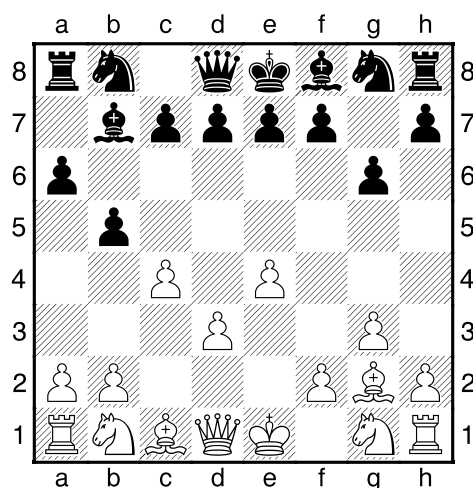
**Schmittziel,Eckhard (2425) – Ostenstad,Berge (2410) [B00]**

Troll Masters Gausdal, 1989

**1.e4 a6 2.g3 b5 3.Ag2 Ab7 4.d3 g6** Diagrama

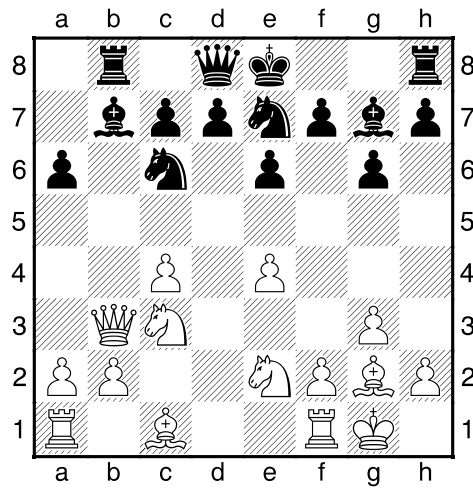


[RR 4...e6 5.Cf3 c5 6.0-0 Cf6 (RR 6...d6 7.c3 Cf6 8.De2 Ae7 9.Cg5 0-0 10.f4 Cc6 11.Ae3 Te8 12.Dc2 h6 13.Cf3 Af8 14.Ad2 e5 15.fxe5 Cxe5 16.Cxe5 Txe5 17.Te1 c4 18.Af4 Te8 19.Dd2 Tc8 ½-½ Le Huu Thai-Nguyen Quang Duc/Cao Lanh Dong Thap 2006/CBM 111 ext) 7.Te1 d6 8.a4 Ae7 ½-½ Hamdouchi,H-Stefanova,A/Santo Antonio 1999/CBM 070 ext] **5.c4N** Diagrama

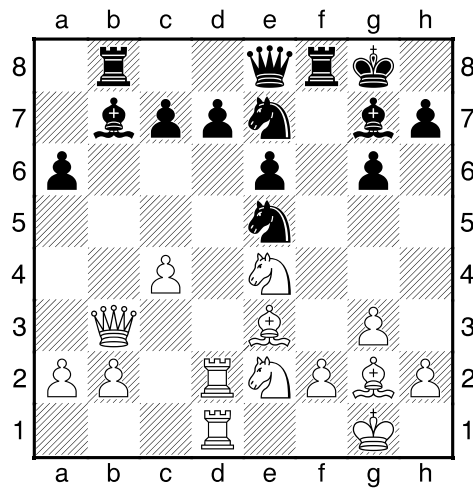


[RR 5.f4 f5 (RR 5...Ag7 6.Cf3 d6 7.0-0 e6 8.f5 e5 9.fgx6 hxg6 10.Cc3 Cd7 11.Ag5 f6 12.Ae3 Ce7 13.Dd2 b4 14.Ce2 c5 15.Ch4 Cf8 16.c3 a5 17.d4 g5 18.Cf5 Cxf5 19.Txf5 Ce6 20.Td1 Jasim,A-Ali,A/Teheran 2001/CBM 081 ext/1-0 (53)) 6.De2 fxe4 7.dxe4 Ag7 8.Ch3 e6 9.Cf2 De7 10.0-0 Cc6 11.c3 Cf6 12.Cd3 0-0-0 13.b4 d5 14.e5 Cd7 15.Ae3 g5 16.Ah3 h5 17.fxg5 Ccxe5 18.Cf4 h4 19.Axe6 hxg3 Meszaros,R-Rabovszky,G/Zalakaros 1995/EXT 1997/0-1 (45)] **5...Ag7 6.Ce2 e6** [6...bxc4 7.dxc4 Cf6 8.Cbc3 0-0 9.f4 Cc6 10.e5 Cg4 11.0-0 f6 12.Ca4±] **7.Db3 Cc6 8.0-0 Cge7 9.Cbc3 bxc4 10.dxc4** [10.Dxb7? Ta7-+] **10...Tb8=** Diagrama

**Estudio Casero Apertura 1.e4 a6 (B00) - Por el MF Job Sepúlveda**

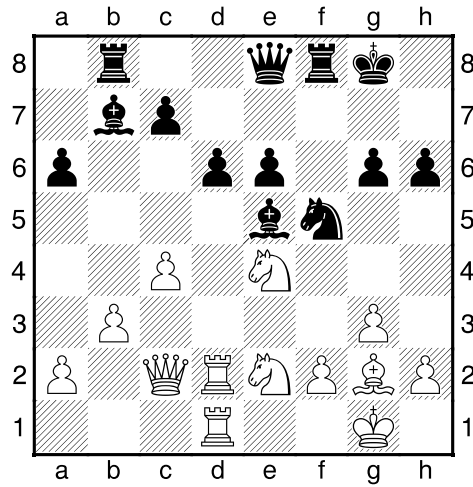


**11.Ae3 0-0 12.Tad1 f5 13.Td2 De8 14.Tfd1 fxe4 15.Cxe4 Ce5** Diagrama

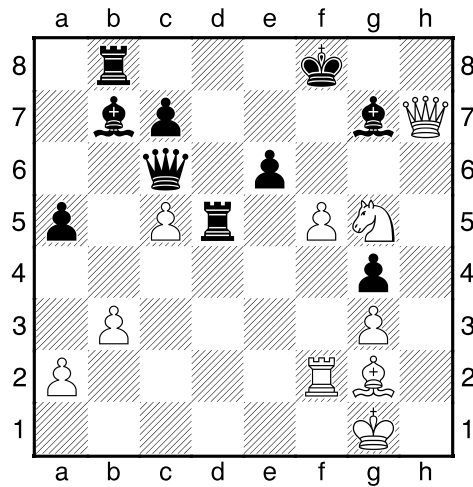


**16.Dc2 Cf5 17.Af4 d6 18.b3 h6 19.Axe5 Axe5** Diagrama

Estudio Casero Apertura 1.e4 a6 (B00) - Por el MF Job Sepúlveda



20.Dd3 g5 21.Tf1 Ag7 22.f4 g4 23.Tf2 a5 24.h3 h5 [24...gxh3 25.Axh3 Dg6] 25.hxg4 hxg4 26.c5 d5  
 27.Cg5 Dc6 28.Dc2 Tf6 29.Cd4 Cxd4 30.Txd4 Tf5? [30...Th6! 31.Td1 Af8 32.Tc1 Ae7] 31.Txd5!! Txd5  
 32.Dh7+ Rf8 33.f5 Diagrama



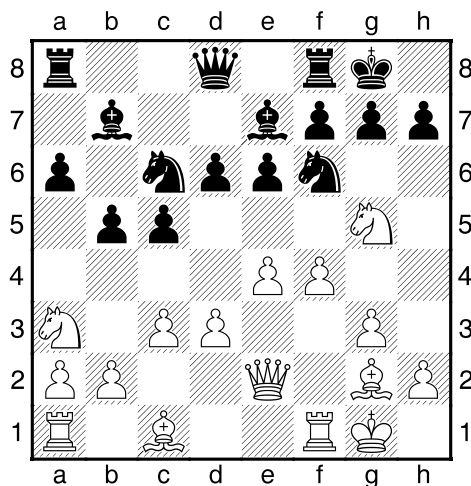
1-0

## Estudio Casero Apertura 1.e4 a6 (B00) - Por el MF Job Sepúlveda

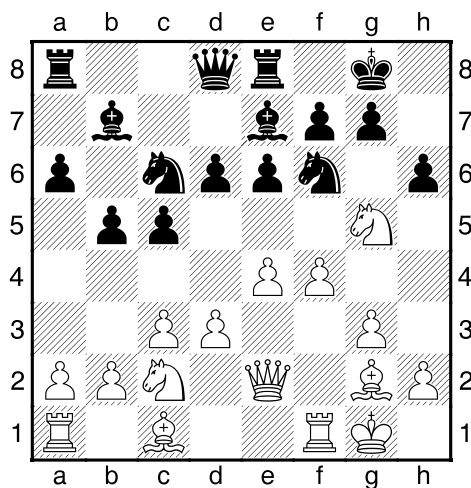
**Gelman,Alexander (2440) – Korotylev,Alexey (2470) [B00]**

Goldberg mem Moscow (15), 1998

**1.e4 a6 2.g3 b5 3.Ag2 Ab7 4.d3 e6 5.Cf3 c5 6.0-0 d6 7.c3 Cf6 8.De2 Ae7 9.Cg5 0-0 10.f4 Cc6 11.Ca3N**  
Diagrama

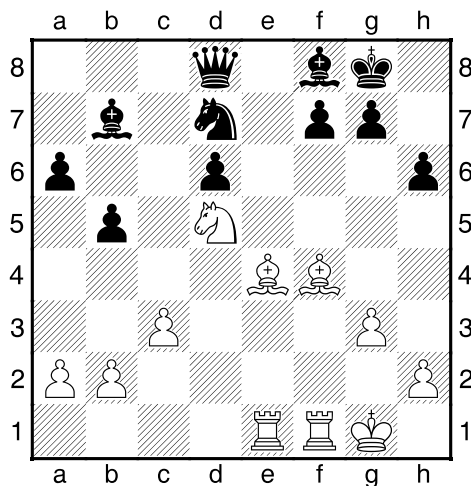


**[RR 11.Ae3 Te8 12.Dc2 h6 13.Cf3 Af8 14.Ad2 e5 15.fxe5 Cxe5 16.Cxe5 Txe5 17.Te1 c4 18.Af4 Te8 19.Dd2 Tc8 ½-½ Le Huu Thai–Nguyen Quang Duc/Cao Lanh Dong Thap 2006/CBM 111 ext] 11...Te8 12.Cc2 [12.e5 Cd5 13.exd6 Dxd6 14.Dh5 Axc3 15.fxc3 f5 16.gxf6 Cxf6 17.Dg5 Tf8 18.Ae3 Dxd3 19.Axc5±] 12...h6=** Diagrama



**13.Cf3 Af8 14.Ad2 e5 15.fxe5 Cxe5 16.Cxe5 Txe5 17.Tae1 c4 18.Af4 Te8 19.Dd2 Tc8 20.Cb4 cxd3 21.Dxd3 Cd7 22.Cd5 Tc4 23.Df3 Texe4 24.Dxe4 Txe4 25.Axe4±** Diagrama

## Estudio Casero Apertura 1.e4 a6 (B00) - Por el MF Job Sepúlveda

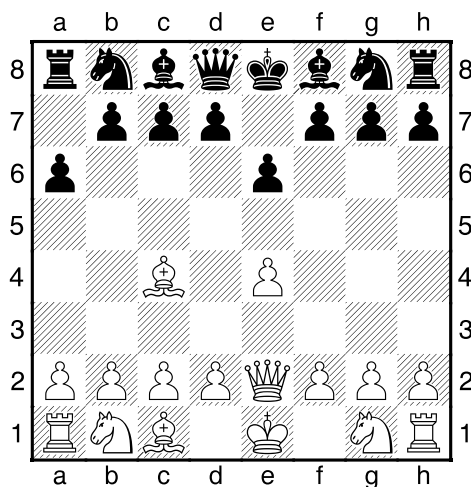


1/2-1/2

### Szitas,Gabor (2207) – Fejzovski,Enver (2130) [B00]

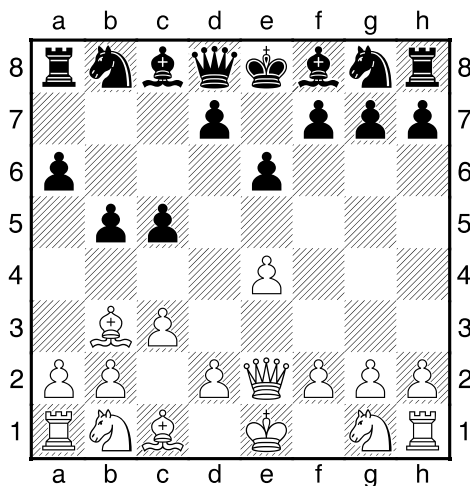
Condom op 1st (2), 14.07.2002

1.e4 a6 2.Ac4 e6 3.De2 Diagrama

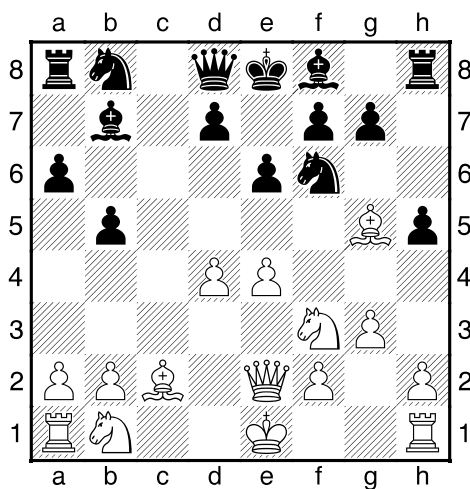


[RR 3.Cc3 Ac5 4.d4 Aa7 5.Cf3 c6 6.0-0 d5 7.exd5 cxd5 8.Ab3 Cc6 9.Te1 Cge7 10.Ce2 0-0 11.c3 Cg6 12.Ac2 Ch4 13.Axh7+ Rh8 14.Cg5 f6 15.Cg3 fxg5 16.Dh5 Df6 17.Ag6+ 1-0 Rollwitz,J-Heidfeld,C/Bad Sooden Allend 2006/EXT 2007] 3...b5 4.Ab3 c5 5.c3N Diagrama

## Estudio Casero Apertura 1.e4 a6 (B00) - Por el MF Job Sepúlveda

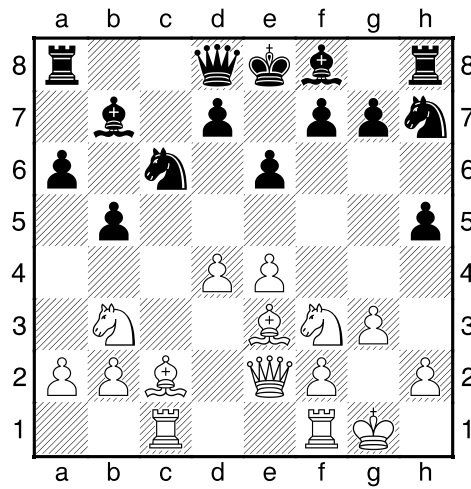


[RR 5.d3 Cc6 6.Cf3 Dc7 7.Ae3 Cf6 8.h3 Ae7 9.0-0 Ab7 10.Cbd2 Ca5 11.c3 Cxb3 12.axb3 d5 13.e5 Cd7 14.d4 cxd4 15.Axd4 Ac5 16.Axc5 Dxc5 17.b4 Dc7 18.Cb3 Tc8 19.Cbd4 h6 Canel,M-Israel,G/France 2002/EXT 2005/1-0 (53)] 5...Dg5 6.g3 [6.Cf3 Dxc5 7.Tg1 Dh3 8.d4 d6 9.dxc5 dxc5 10.c4 Cc6] 6...Ab7 7.Ac2 h5 8.Cf3 Dd8 9.d4 cxd4 10.cxd4 Cf6 11.Ag5± Diagrama

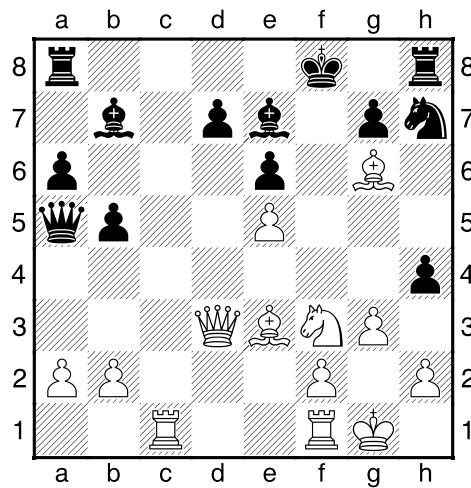


11...Da5+ 12.Cbd2 Cc6 13.0-0 Ch7 14.Cb3 Db6? 15.Ae3 Dd8 16.Tac1± Diagrama

## Estudio Casero Apertura 1.e4 a6 (B00) - Por el MF Job Sepúlveda



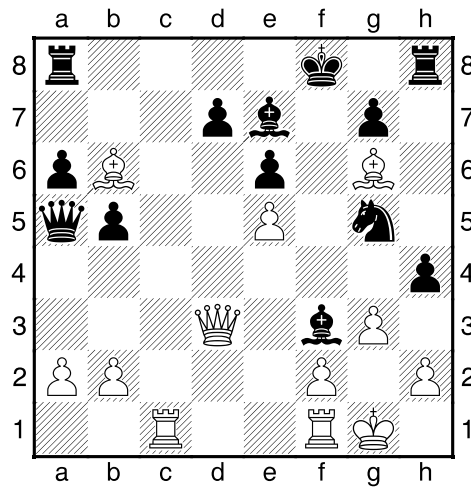
16...h4 17.d5 Ca5 18.dxe6 fxe6 19.e5 Ae7 20.Ag6+ Rf8 21.Cxa5 Dxa5 22.Dd3+- Diagrama



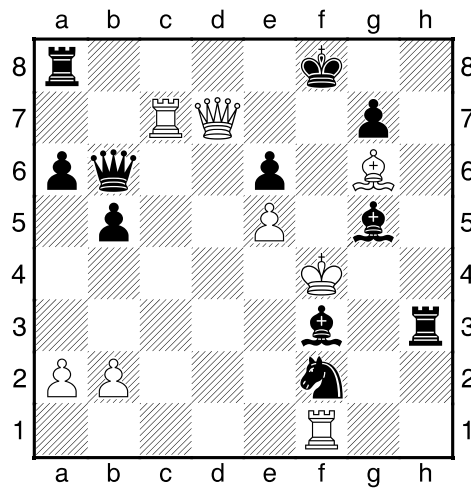
22...Axf3 23.Ab6?? [23.Ad2! Cg5 24.Axg5+-] 23...Cg5!-+ Diagrama



## Estudio Casero Apertura 1.e4 a6 (B00) - Por el MF Job Sepúlveda



24.h3 Dxb6 25.Dxd7 Cxh3+ 26.Rh2 Cxf2 27.Tc7 hxg3+ 28.Rxg3 Th3+ 29.Rf4 Ag5+ Diagrama



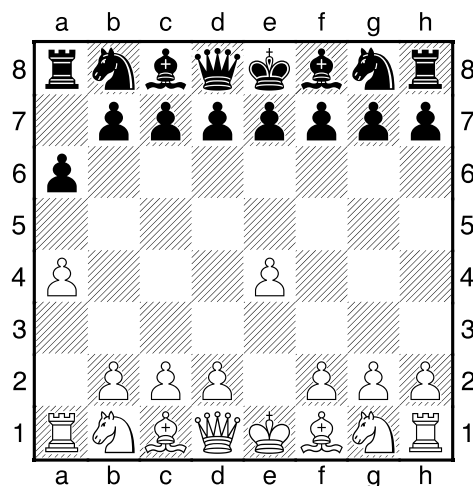
0-1

## Estudio Casero Apertura 1.e4 a6 (B00) - Por el MF Job Sepúlveda

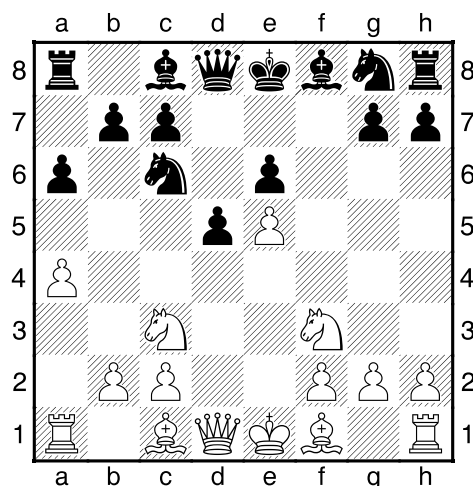
Gottuk,Stefan (2285) – Steffens,Olaf (2325) [B00]

Oberliga Nord N 9697 Germany, 1997

1.e4 a6 2.a4 Diagrama

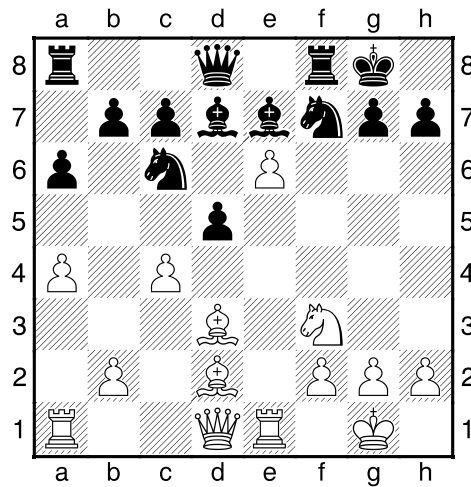


[RR 2.f4 c5 3.a4 d6 4.b3 Cd7 5.Ab2 e6 6.Ad3 b6 7.Dg4 Cgf6 8.Df3 Ab7 9.Axf6 Cxf6 10.Cc3 Ae7 11.Ch3 h6 12.Cf2 Dc7 13.De3 d5 14.Ce2 c4 15.bxc4 dxc4 16.Axc4 Dxc4 Toliaş,A–Pavlis,A/Petroupoli 2006/EXT 2007/0-1 (48)] **2...Cc6 3.Cc3N** [RR 3.Cf3 d6 4.d4 Cf6 5.Cc3 Ag4 6.Ae2 e6 7.0-0 Ae7 8.Af4 h6 9.Te1 g5 10.Ae3 Axf3 11.Axf3 e5 12.Cd5 Af8 13.Cxf6+ Dxf6 14.d5 Ce7 15.Ta3 Cg6 16.a5 c5 17.b4 Dd8 Goeschl,O–Hechl,G/Vienna 1994/EXT 1998/½-½] **3...e6 4.d4 d5 5.e5 f6 6.Cf3 fxe5 7.dxe5±** Diagrama

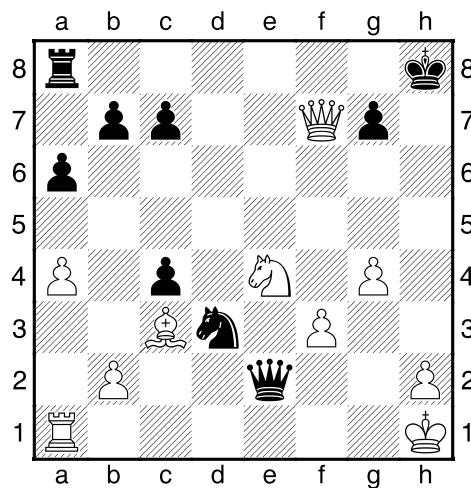


**7...Ab4 8.Ad2 Ch6 9.Ad3 Cf7 10.0-0 Ad7 11.Te1 0-0 12.Cxd5!? exd5 13.e6 Ae7?! [13...Axe6! 14.Txe6 Dd7 15.Te2 Tae8 16.Txe8 Txe8 17.Ae3 Cfe5=] 14.c4!?** Diagrama

## Estudio Casero Apertura 1.e4 a6 (B00) - Por el MF Job Sepúlveda



14...Cb4 15.exf7+ Txf7 16.Txe7 Dxe7 17.Axh7+ Rxh7 18.Cg5+ Rg8 19.Cxf7 Cd3 20.Cg5 dxc4 21.Dh5 Af5 22.g4 Ae4 23.f3 Dc5+? [23...Ad5±] 24.Rh1 Df2 25.Df7+ Rh8 26.Cxe4 De2 27.Ac3 Diagrama

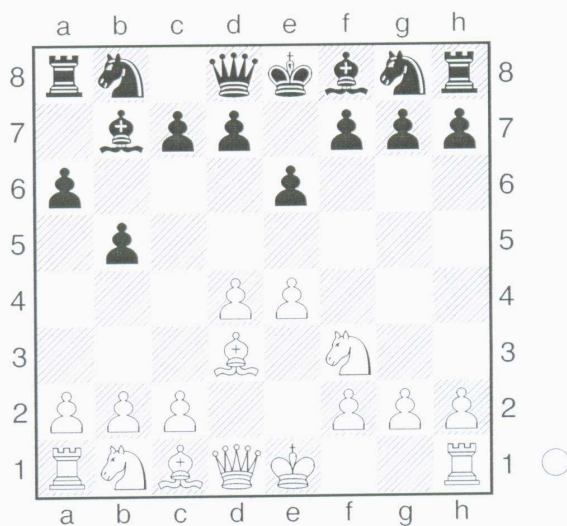


1-0

## Estudio Casero Apertura 1.e4 a6 (B00) - Por el MF Job Sepúlveda

ChessBase 9.0 Impresión, Job Sepulveda, 17/03/2008

1



1.e4 a6 2.d4 b5 3.Ad3 Ab7 4.Cf3 e6

	5	6	7	8	9	10	11	12	13	14	15	
1	De2 Cf6	a4 c5	dxc5 Axc5	Cbd2 b4	e5 Cd5	Ce4 Ae7	Ag5! 0-0	Cd6 Ac6	h4± <sup>1</sup>			±
2	Cbd2 c5	c3 d6	De2 Cd7	Cf1 Cgf6	Cg3 e5	a4 c4	Ac2 g6	b3± <sup>2</sup>				

<sup>1</sup> Volovik - V. E. Kozlov, USSR 1987 - 44/125

<sup>2</sup> !? teoria B00 1.e4 a6 Marín - Nanu, Romania (ch) 1998 - 74/(94)