

BLM LIBRARY



88070762



Stewards of Your Public Lands

1980

A Photo Guide to BLM Personnel

HD
8011
.M9
S74
1980

Land Management

Montana

North Dakota • South Dakota



The following pages contain a photo guide to the Stewards of your public lands. These are the BLM people of Montana, North Dakota and South Dakota who will put multiple use in action during the 80's.

As we stand on the threshold of this exciting new decade, I welcome you to join with us in "Action for the 80's"!

**Mike Penfold
State Director**

BLM Library
Denver Federal Center
Bldg. 50, OC-521
P.O. Box 25047
Denver, CO 80225

TABLE OF CONTENTS

	Pg.
Office of the State Director	1
Equal Employment Opportunity Office	2
Office of Public Affairs	3
Energy-Rights-of-Way Transportation & Compliance Staff	4
Division of Management Services	6
Branch of Administrative Management	8
Branch of Records and Data Management	10
Records Management Section	10
Docket and Accounts Section	11
Title and Records Section	12
Division of Planning and Environmental Coordination	13
Branch of Planning Coordination	14
Branch of Environmental Coordination	15
Division of Technical Services	16
Appraisal Staff	18
Branch of Engineering	19
Branch of Cadastral Survey	20
Cadastral Section	21
Branch of Lands and Minerals Operations	22
Lands Adjudication Section	23
Minerals Adjudication Section	24
Division of Resources	25
Branch of Biological Resources	26
Branch of Lands and Minerals	28
Dickinson District	29
Division of Resource Management and Operations	30
Butte District	31
District Manager's Staff	32
Division of Administration	32
Division of Operations	33
Division of Resources	34
Division of Planning & Environmental Coordination	35
Headwaters Resource Area	37
Dillon Resource Area	39
Garnet Resource Area	43
YACC Program	46
Miles City District	47
District Manager's Staff	48
Division of Administration	48
Division of Operations	49
Division of Resources	50
Division of Planning & Environmental Coordination	52
Big Dry Resource Area	55
Powder River Resource Area	57
South Dakota Resource Area	59

(Continued)

Lewistown District	61
District Manager's Staff	62
Division of Administration	62
Division of Operations	63
Division of Resources	64
Division of Planning & Environmental Coordination	66
Billings Resource Area	67
Judith Resource Area	69
Havre Resource Area	71
Phillips Resource Area	73
Lewistown District Operations Staff, Malta	75
Valley Resource Area	77
YACC Program	79
Directory	80

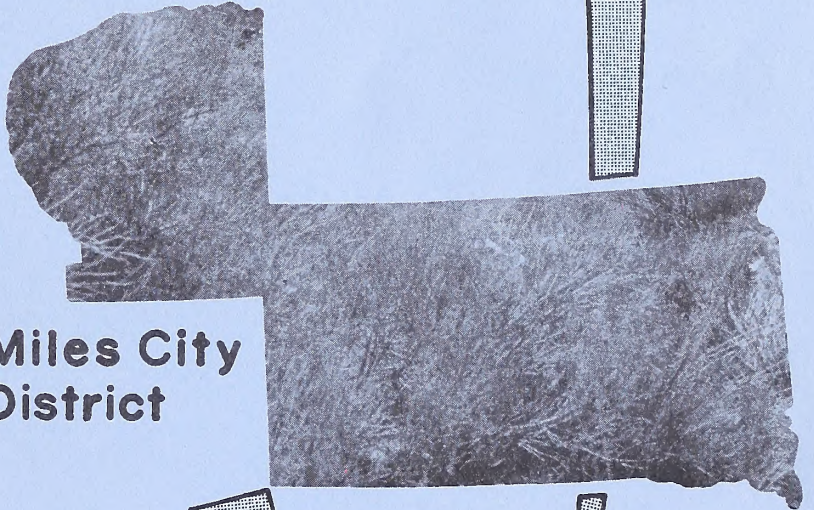
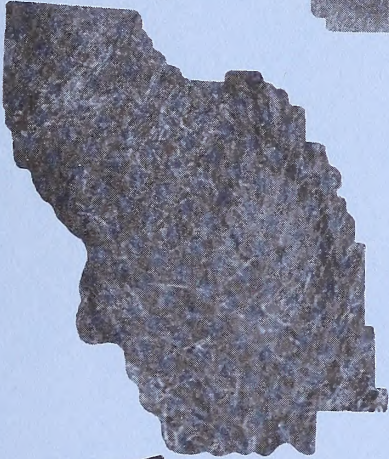
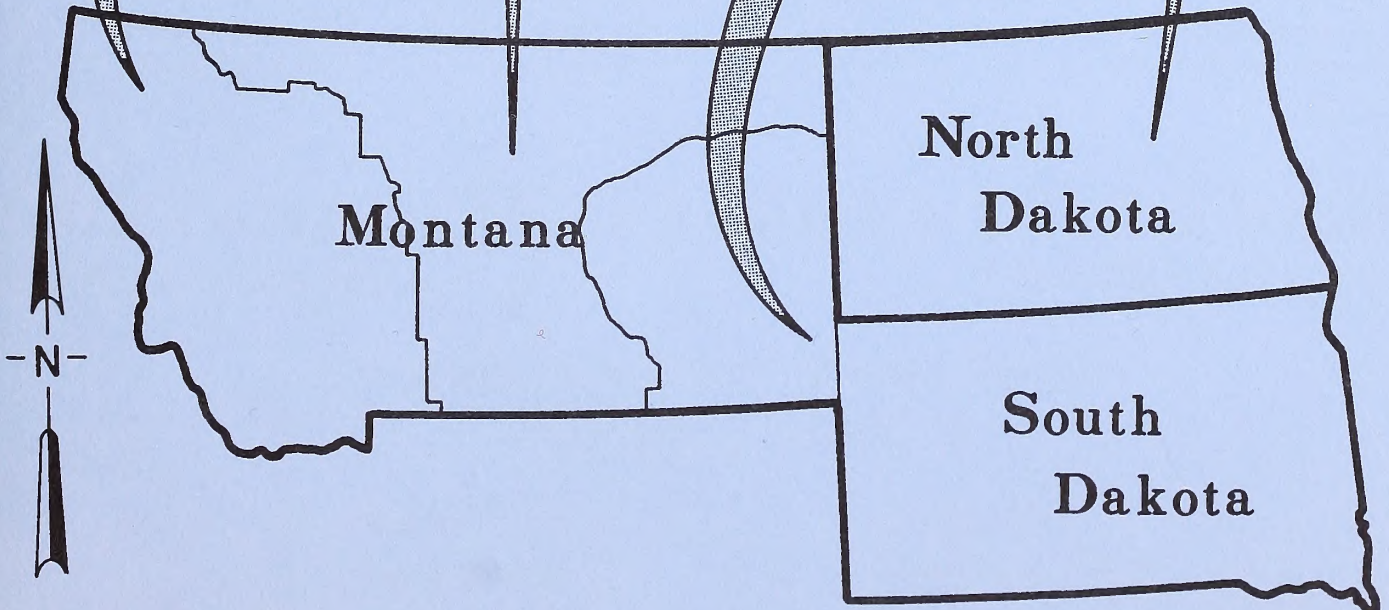
BLM Districts

Lewistown
District

North Dakota
District

Butte
District

Miles City
District



MONTANA STATE OFFICE

Billings,
Montana

Phone
657-6461

OFFICE OF THE STATE DIRECTOR



Michael J. Penfold
State Director

Dorothy Lyall
Secretary

Wilma Angwin
Secretary

Kannon Richards
Associate State Director

MONTANA NORTH DAKOTA SOUTH DAKOTA

8.4 Million Surface Acres

50 Million Subsurface Acres

Montana State Office: Billings, Montana

DISTRICT OFFICES

Butte
Lewistown

Miles City
Dickinson, ND

MULTIPLE RESOURCE MANAGEMENT

EQUAL EMPLOYMENT OPPORTUNITY OFFICE



Tina Blackwell
Secretary

Gloria Collins
EEO Specialist

Edna Haverland
EEO Specialist

Career Ladders

Job Counseling

Federal Women's Program

Hispanic Employment

Indian Employment

Veterans Readjustment

Community Services

Placement of Handicapped

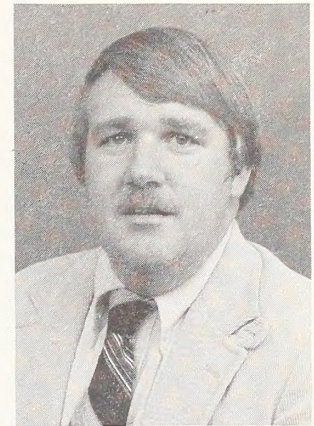
OFFICE OF PUBLIC AFFAIRS



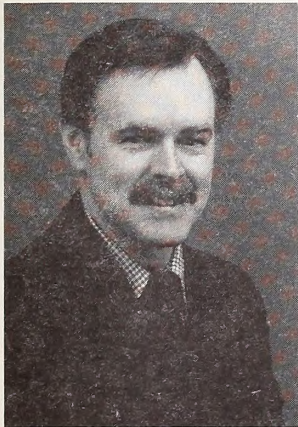
Mary Barcus
Information Receptionist



Carol Kemmis
Information Receptionist



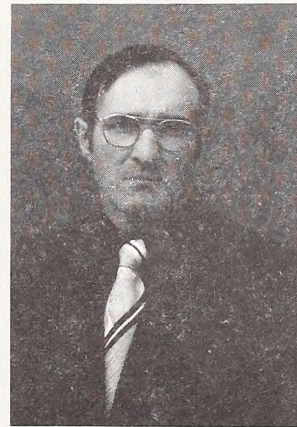
Cy Jamison
Youth Program Manager



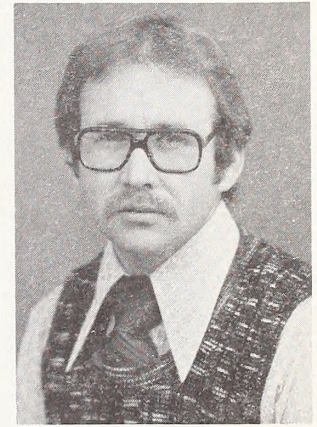
Craig Whitney
Public Information Specialist



Emmons Sanford
Public Information Specialist



Kenneth Hanify
Training Specialist
(Environmental Education)



Jack Sept
Visual Information Specialist

Chief
Vacant

Public Involvement

Information

Education

Publications

Recreation Maps

Youth Programs

Media Contact

Issues

Legislation

ENERGY RIGHTS OF WAY TRANSPORTATION AND COMPLIANCE STAFF



**Mary Staley
Clerk-Typist**

**Neil Morck
Energy Project Manager**

Transmission Lines

Pipelines

Reclamation

Construction

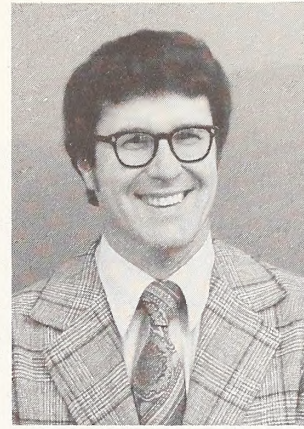
Compliance

Planning - Permitting

Energy Right-of-Way Staff



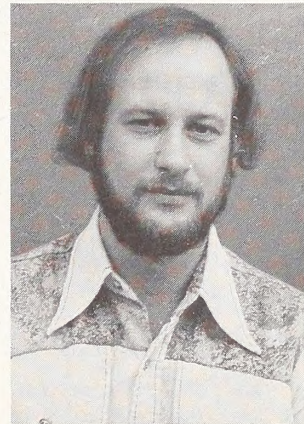
Claude Roswurm
Realty Specialist



Gary Gebhardt
Wildlife Management Biologist



John Haas
General Engineer



Arnold Pike
Natural Resource Specialist

DIVISION OF MANAGEMENT SERVICES



LaVonne Hoselton
Secretary

Pete Pedersen
Chief

Ginger Sano
Clerk-Typist

Payroll

Administration Support

Safety

Records

Library

Training

Personnel

Contracts

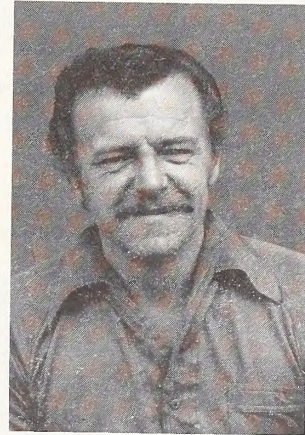
Property Management

Purchasing

Division of Management Services Staff



Clifford Ashmon
Program Analyst



Floyd Blank
Budget Analyst



Leroy Keilman
Safety Manager

Branch of Administrative Management



Chuck Switzer
Chief



Lorrene Schardt
Secretary (Typing)



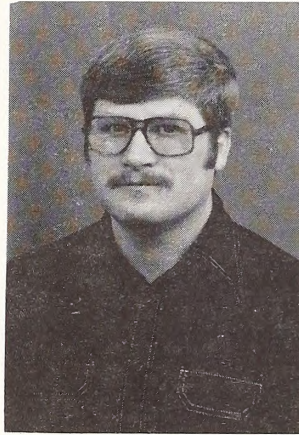
Eileen Hotchkiss
Offices Services Supervisory



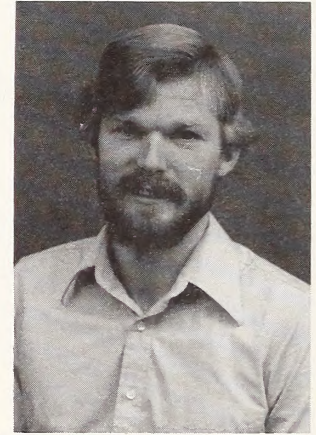
Phyllis Belcher
Accounting Technician



Diane Posten
Supervisory Procurement Analyst



Marc Gress
Contract Specialist



John Dickinson
Procurement Agent



JoAnn Bowman
Procurement Assistant



Rick Kirkness
Printing Specialist

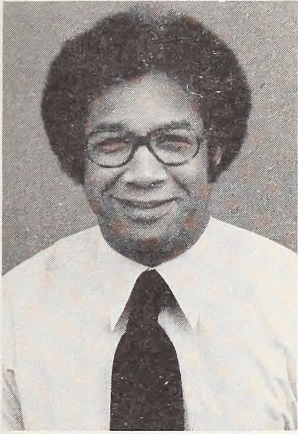


Kathy Ives
Editorial Assistant



Anita McKenna
Office Machine Operator

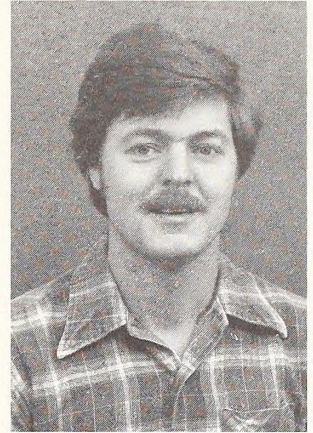
Branch of Administrative Management



Ron Clayton
Employee Development Specialist



Neil Atkinson
Supply Clerk



Larry Hoffman
Supply Clerk



Marilyn Rooney
Personnel Management Specialist



Shirley Lahr
Staffing Assistant



Diana Schwartz
Personnel Clerk



Beverly Javornik
Personnel Clerk



Linda Slevin
Staffing Clerk

Branch of Records and Data Management



Delores James
Chief



Jackie Miller
Secretary



Mary Stripp
Public Contact Specialist



Mary Smith
Public Contact Clerk

Records Management Section



Rita Stockdale
Supervisory Records Management Specialist



Mae Buechler
Mail File Clerk



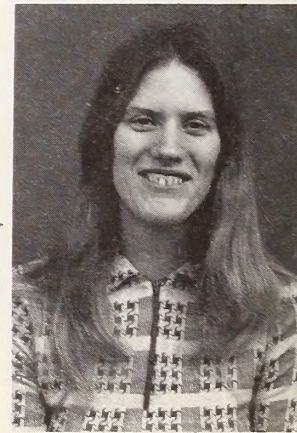
Carolyn Nelson
Librarian



Patti Koch
Library Clerk

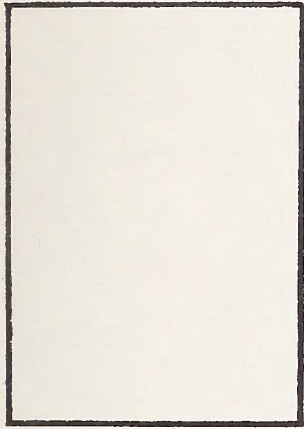


Sally Taylor
Clerk-Typist



Carla Heath
Mail Clerk

Docket and Accounts Section



**Vacant
Supervisory Records
Management**



**Joan Lehman
Accounting Technician**



**Kristi Hayes
Cashier**



**June Waldhauser
Legal Clerk**



**Joan Louk
Conveyance Clerk**



**Joan Winters
Legal Clerk**



**Nan Cox
Legal Clerk**



**Virginia Burris
Legal Clerk**



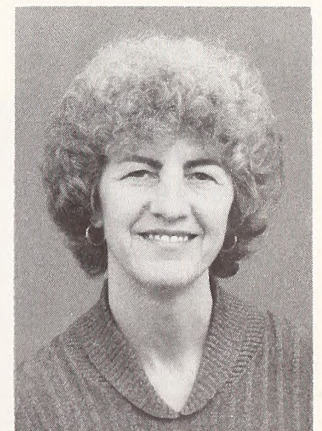
**Sandra Hebblethwaite
Legal Clerk**



**Victoria Koch
Legal Clerk**



**Ramona Catoire
Legal Clerk**



**Myrna Boos
Legal Clerk**

Docket and Accounts Section



Barbara Reckinger
Legal Clerk



Debbie Sorg
Legal Clerk



Joan Heins
Legal Clerk



Nancy Hofferber
Legal Clerk

Title and Records Section



Helen Hodge
Supervisory Records Specialist



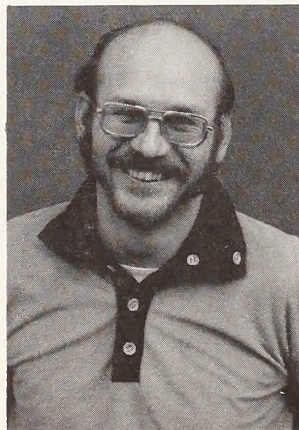
Catherine Carlisle
Legal Clerk



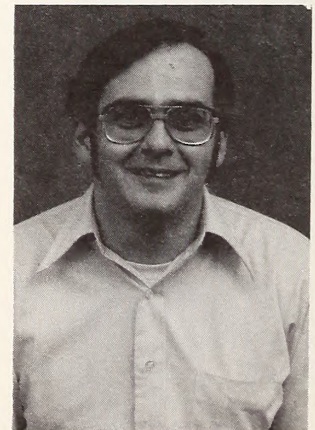
Eva Pogue
Legal Clerk



Linda Payer
Legal Clerk

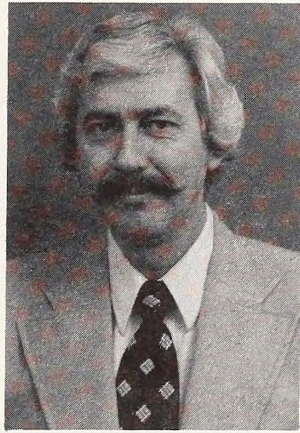


Douglas Norwood
Cartographic Aid

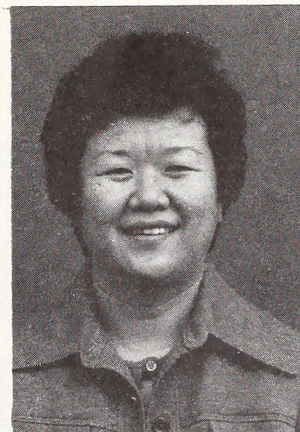


Ted Laird
Cartographic Aid

DIVISION OF PLANNING AND ENVIRONMENTAL COORDINATION



**Ernie Kemmis
Chief**



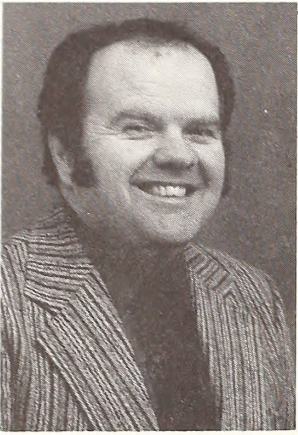
**Alice Slagowski
Secretary**

Land Use Planning

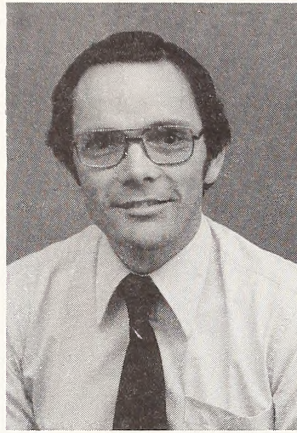
Programs

**Environmental
Assessment**

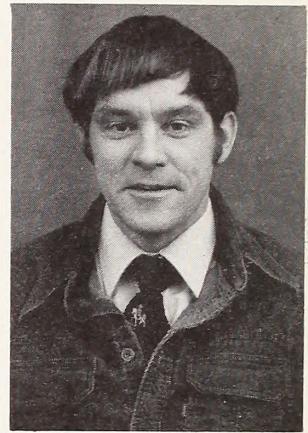
Branch of Planning Coordination



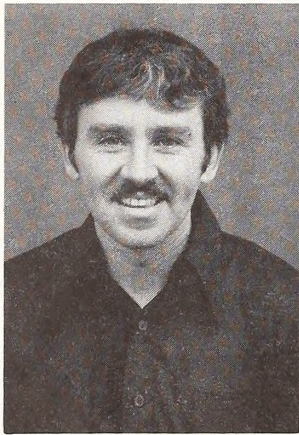
Jim Binando
Chief



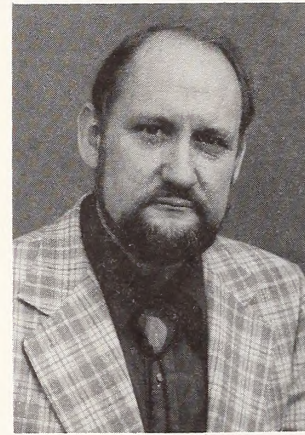
Robert Bales
Program Analyst



Eric Stone
Planning Coordinator



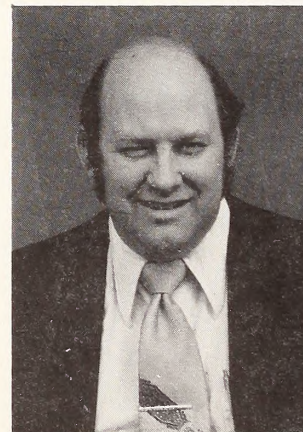
Jerry Jack
Planning Coordinator



Charles Nelson
Land Use Planning Coordinator

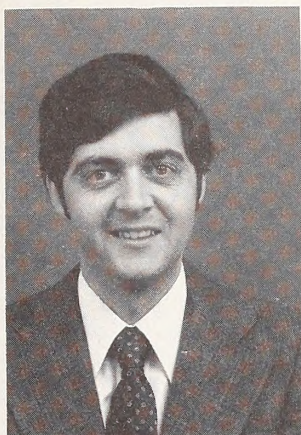


Don Waite
Planning Coordinator



Sexton Orms
Sociologist

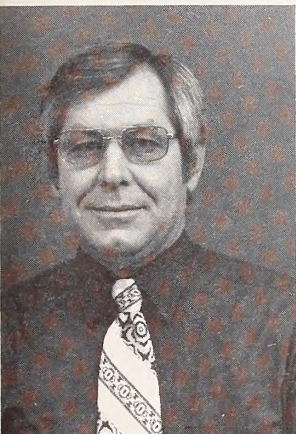
Branch of Environmental Coordination



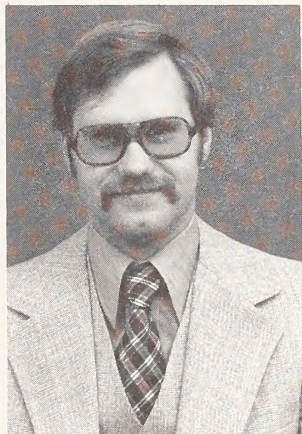
Dave Darby
Chief



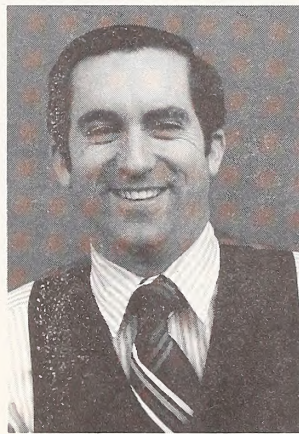
Colin Horman
Landscape Architect



Lloyd Emmons
Botanist



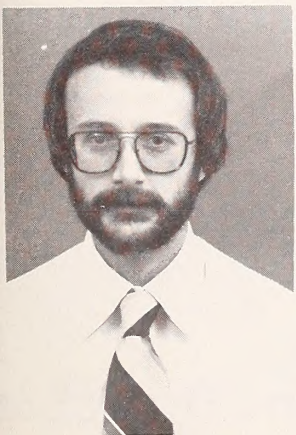
Tom Yokem
Hydrologist



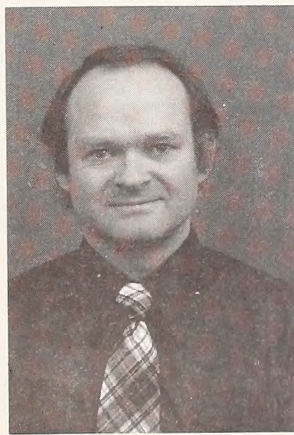
Holden Brink
Wildlife Management Biologist



William Frey
Geologist



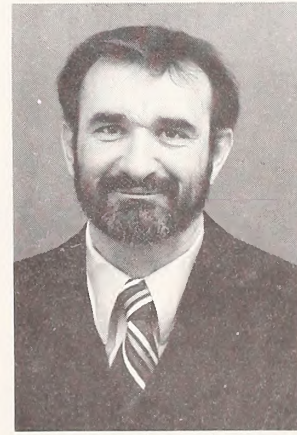
Loren Cabe
Regional Economist



Gary Roam
Environmental Specialist



Larry Pointer
Conservation Agronomist



Bob Allen
Visual Information Specialist

— DIVISION OF TECHNICAL SERVICES —



Kathy Tiskus
Secretary

Gene Newell
Chief

Engineering

Adjudication

Surface Protection

Computer Services

Techni-Graphics

Access

Minerals Operation

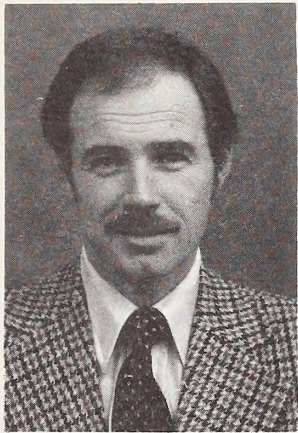
Land Operations

Law Enforcement

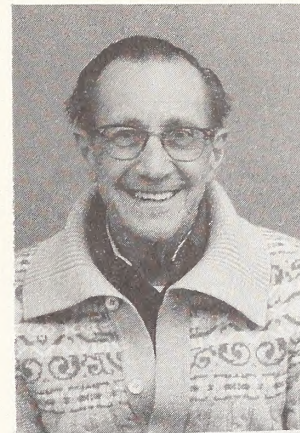
Fire Management

Cadastral Survey

Division of Technical Services



Jack Putsche
Criminal Investigator



Leigh Freeman
Paralegal Specialist



Don Johnson
Information Systems Manager



Rose Davis
Computer Programmer



Marge Hedges
Data Transcriber (MCR)



Lucille Howard
Clerk-Typist

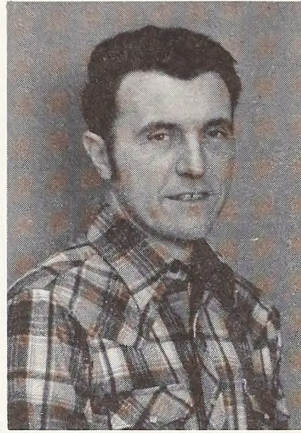


Deborah Weigel
Data Transcriber (MCR)

Appraisal Staff



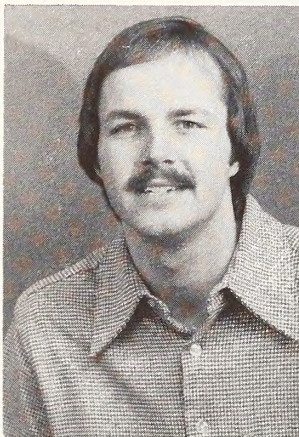
Jim Clark
Appraiser



Ron Appel
Appraiser



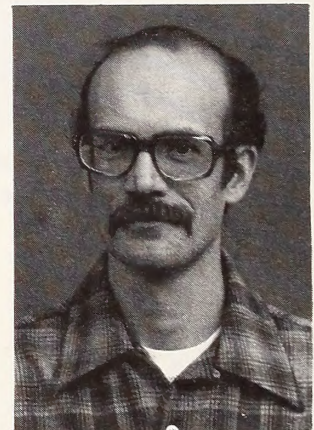
Roy Johnson
Appraiser



Doug Johnson
Appraiser



Kathy Hansen
Clerk-Typist



Olando Lomeland
Appraiser

Branch of Engineering



Hank Hammersmark
Chief



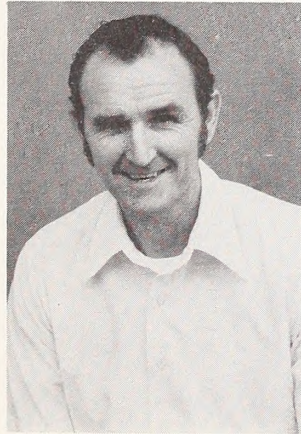
Marion Beierle
Clerk-Stenographer



Ann Gerharz
Clerk-Typist



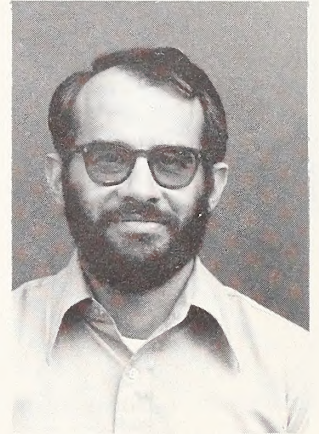
Otto Kruger
Civil Engineer



Bill Comstock
Communications Specialist



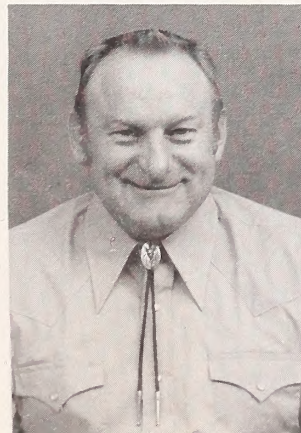
Ken Gandenberger
Electronic Technician



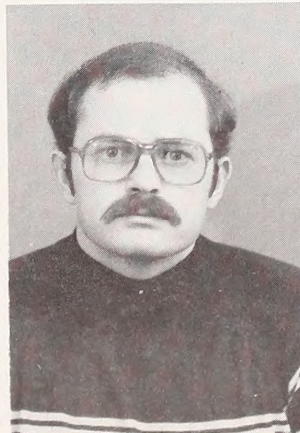
Jim Norris
Civil Engineer



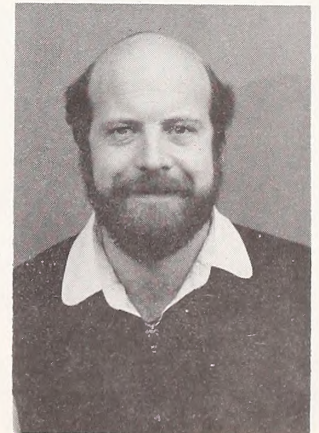
Roy Montgomery
State Fire Management Officer



Ed Giebel
Surface Protection Specialist



James Gjerde
Civil Engineer



Pat Mullaney
Forester

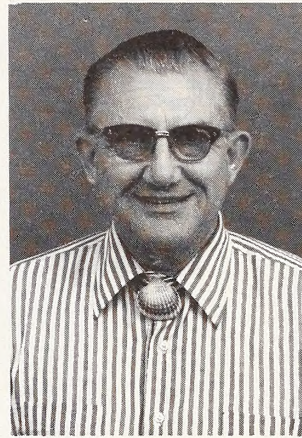
Branch of Cadastral Survey



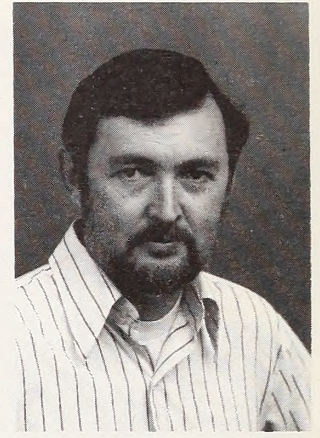
Jim Minnie
Chief



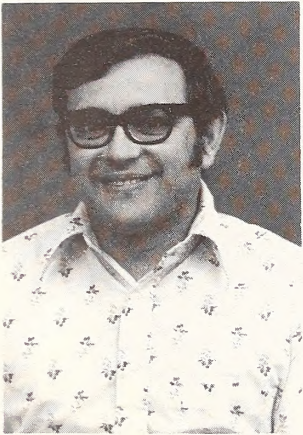
Verna Field
Editorial Assistant



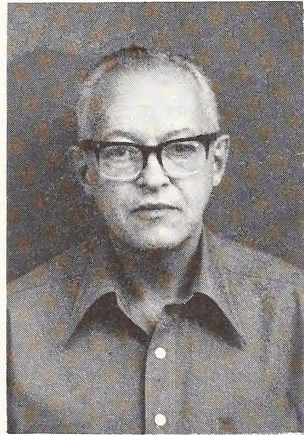
John Habeger
Supervisory Cartographic Technician



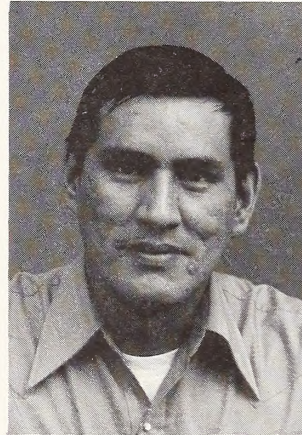
Larry Davis
Illustrator



Chuck Sigafos
Lead Cartographic Technician



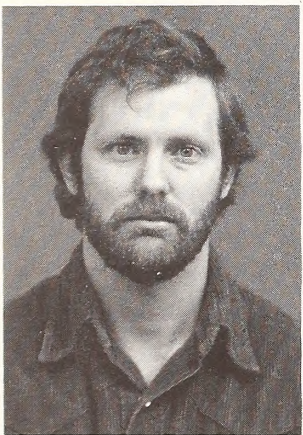
Art Sloate
Cartographic Technician



Bob Brockie
Cartographic Technician



Suzanne Roberts
Cartographic Technician



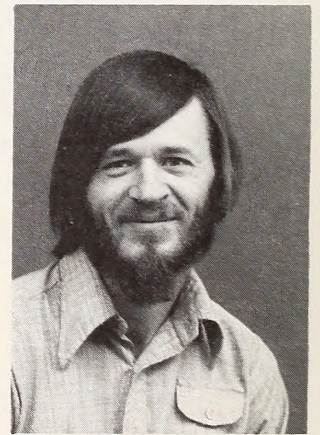
Tom Eldridge
Cartographic Aid



Corla Ann DeBar
Cartographic Aid



Dora Cantu
Cartographic Aid



Gerald French
Engineering Draftsman

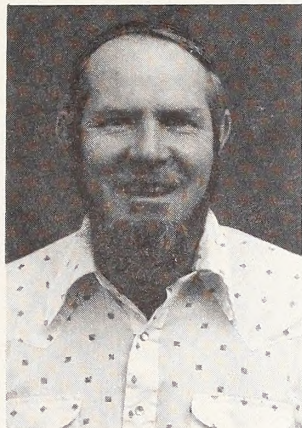
Not Pictured:

Keith Kolstad
Cartographic Technician

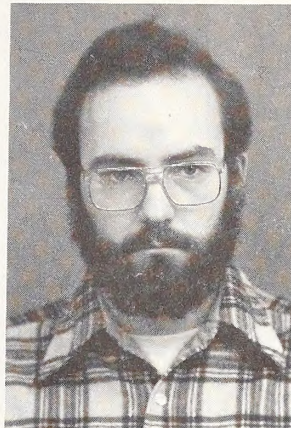
Cadastral Section



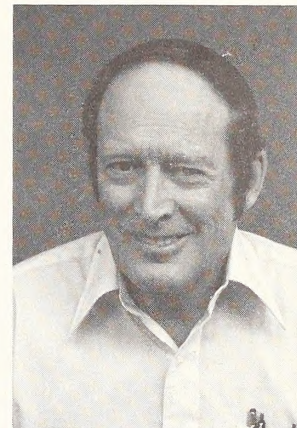
Dick Larimer
Supervisory Land Surveyor



Harold Grusing
Supervisory Land Surveyor



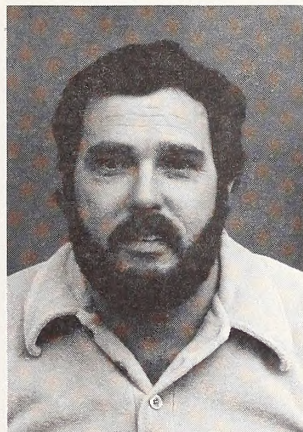
Conrad Gerega
Land Surveyor



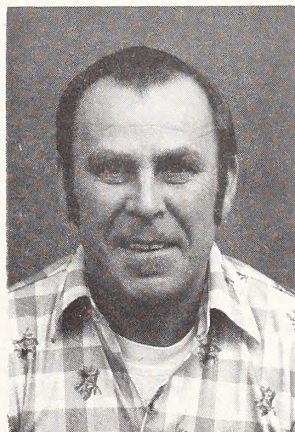
Joe French
Supervisory Land Surveyor



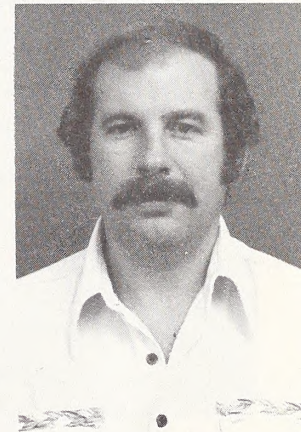
Roy Leedy
Supervisory Land Surveyor



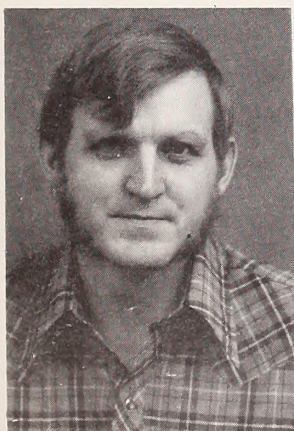
Steve Albright
Supervisory Land Surveyor



Duane Lindenberg
Supervisory Land Surveyor



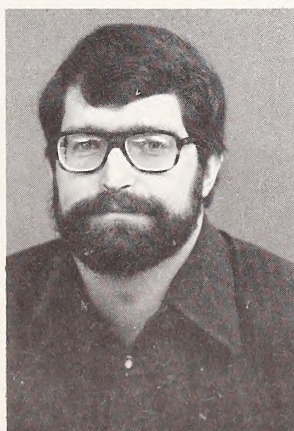
Roger Baxter
Land Surveyor



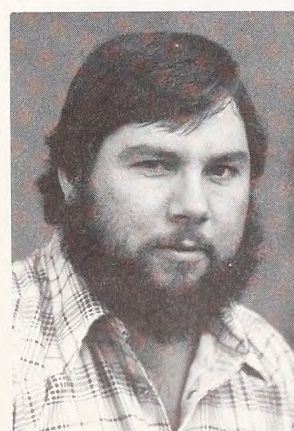
Larry Christiansen
Surveying Technician



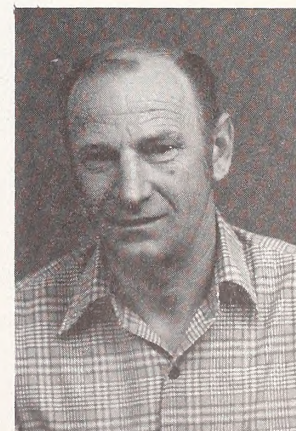
Cruz Almanza
Surveying Technician



Ken Ravnikar
Surveying Technician



Randy Thomas
Surveying Technician



Harry Dietz
Student Trainee

Not Pictured:

Joe LaRue
Supervisory Land Surveyor

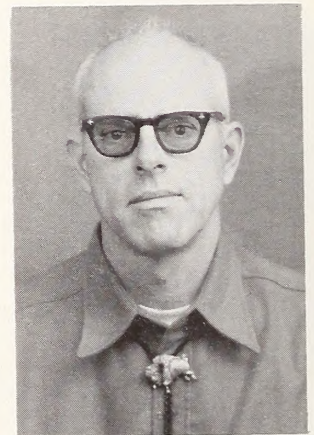
Branch of Lands and Minerals Operations



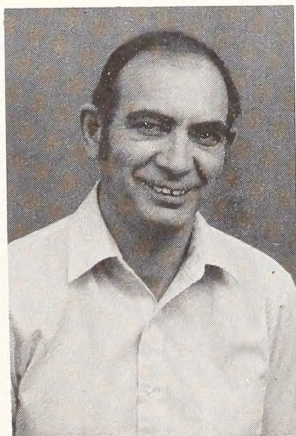
Bud Lee
Chief



Lena Gesuale
Clerk-Stenographer



Don Wirth
Geologist

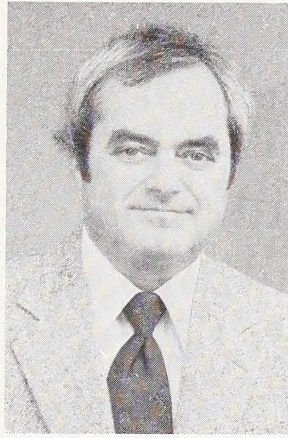


Ed Croteau
Realty Specialist



Tom Durst
Geologist

Lands Adjudication Section



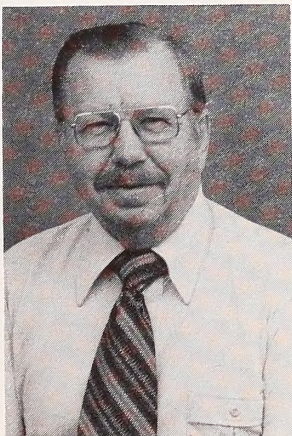
Dan Stark
Supervisory Realty Specialist



Shirley Heffner
Land Law Examiner



Larry Koch
Land Law Examiner



Elmer Anvik
Land Law Examiner



Dee Baxter
Land Law Examiner



Elaine Kaufman
Land Law Examiner

Minerals Adjudication Section



Cynthia Embretson
Supervisory Land Law Examiner



Judy Reed
Land Law Examiner



Alice Tucker
Land Law Examiner



Jeanette Bejot
Land Law Examiner



Peggy Davidson
Land Law Examiner



Ruth Rogers
Legal Clerk



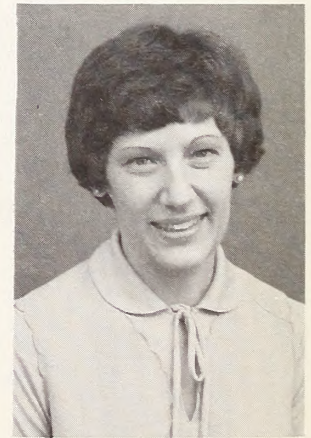
Esther Rivera
Legal Clerk



Joyce Ayers
Legal Clerk



Faye Price
Clerk-Typist



Nancy Steel
Clerk-Typist

DIVISION OF RESOURCES



Sandra Ward
Editorial Assistant

Bill Noble
Chief

Janice Jessen
Clerk (Typing)

Betty Westburg
Clerk-Typist

Linda Koch
Secretary

Lizabeth Bjork
Clerk-Typist

Lands

Watershed

Minerals

Timber

Wildlife

Wilderness

Air Quality

Range

Recreation

Cultural Resources

Branch of Biological Resources



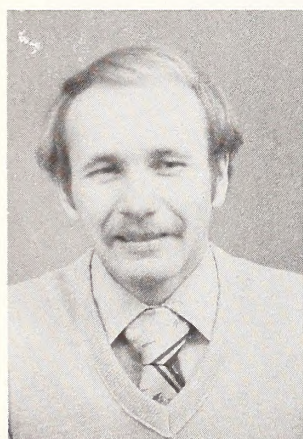
Ron Bartley
Chief



Don McIntosh
Wildlife Management Biologist



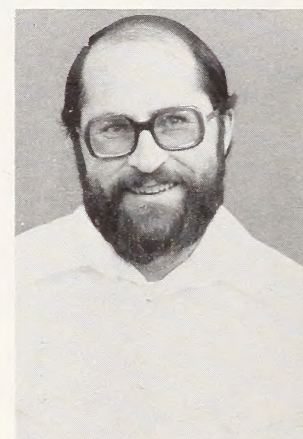
Wes Morrison
Forester



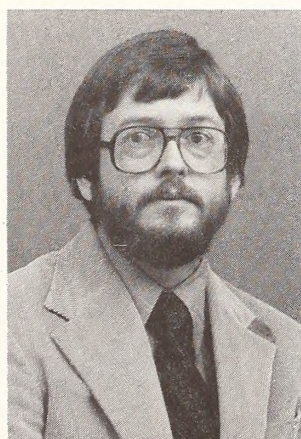
Jim Owings
Outdoor Recreation Planner



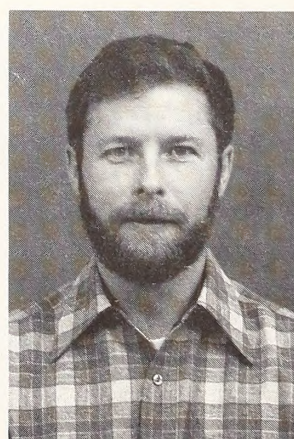
Lyle Rolston
Range Conservationist



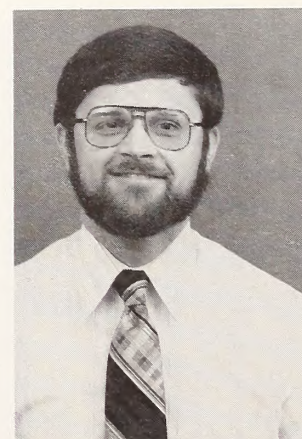
Raymond Hoem
Wildlife Management Biologist



Burt Williams
Archeologist



Mike Whittington
Hydrologist



Fred Batson
Natural Resource Specialist

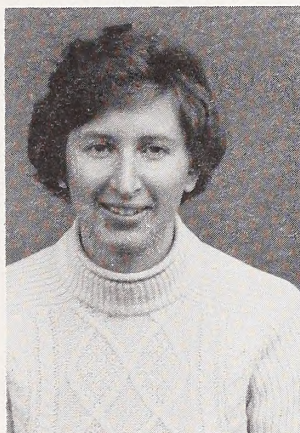
Branch of Biological Resources



Duane Whitmer
Range Conservationist



James Muhn
Historian



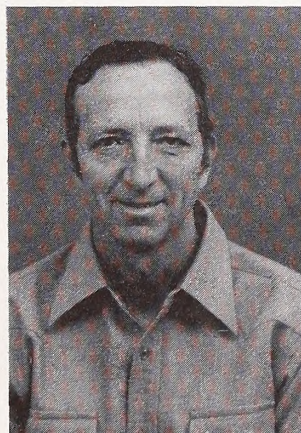
Margaret Taylor
Archeologist



Gary Leppart
Outdoor Recreation Planner



Jimmie Peterson
Physical Scientist



Larry Allen
Hydrologic Technician

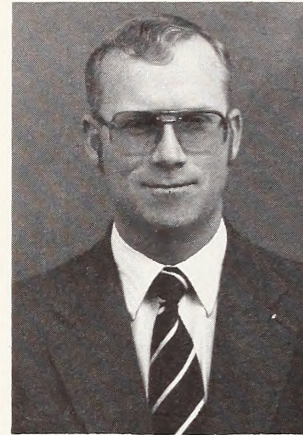


Frances Story
Hydrologic Technician

Branch of Lands and Minerals



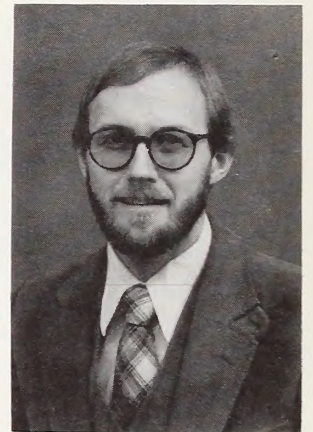
Robert Webb
Chief



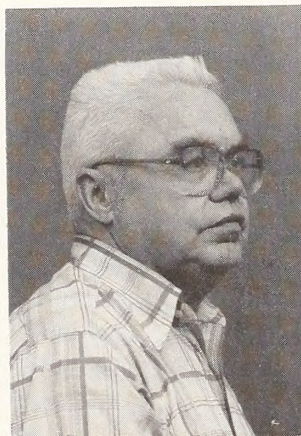
Al Evans
Realty Specialist



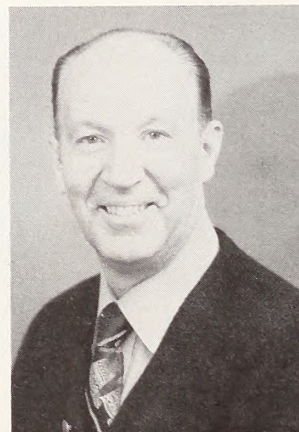
Jarvis Klem
Mining Engineer



Ed Hughes
Industry Economist

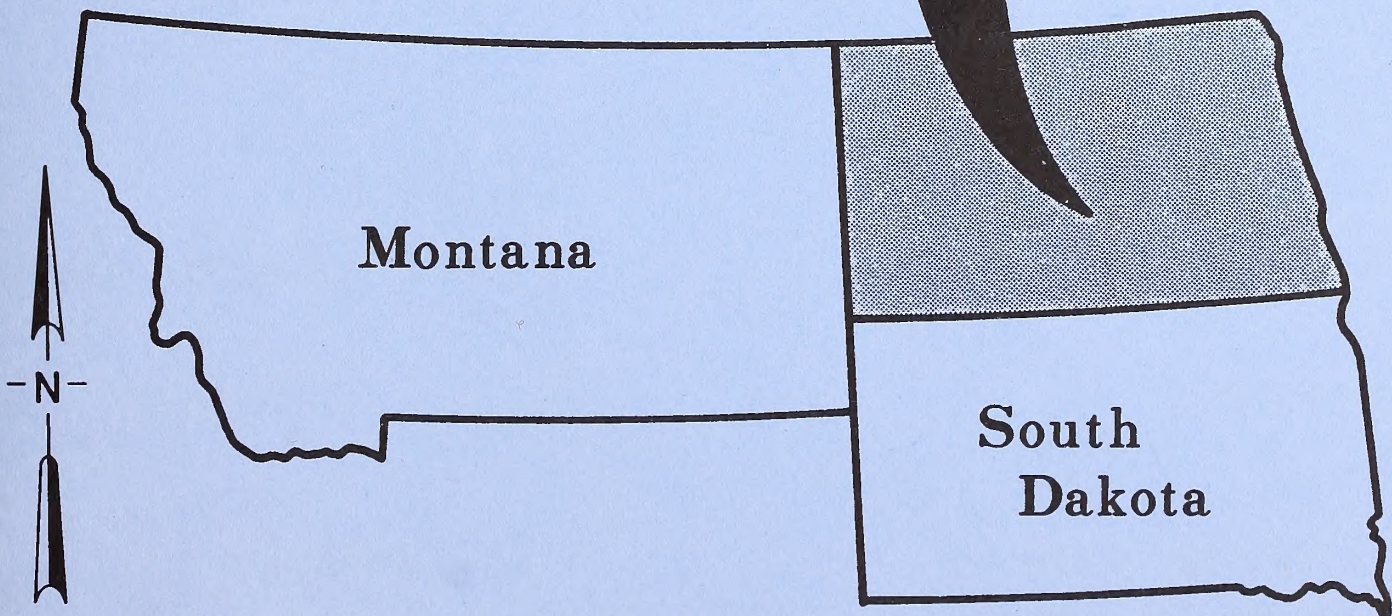
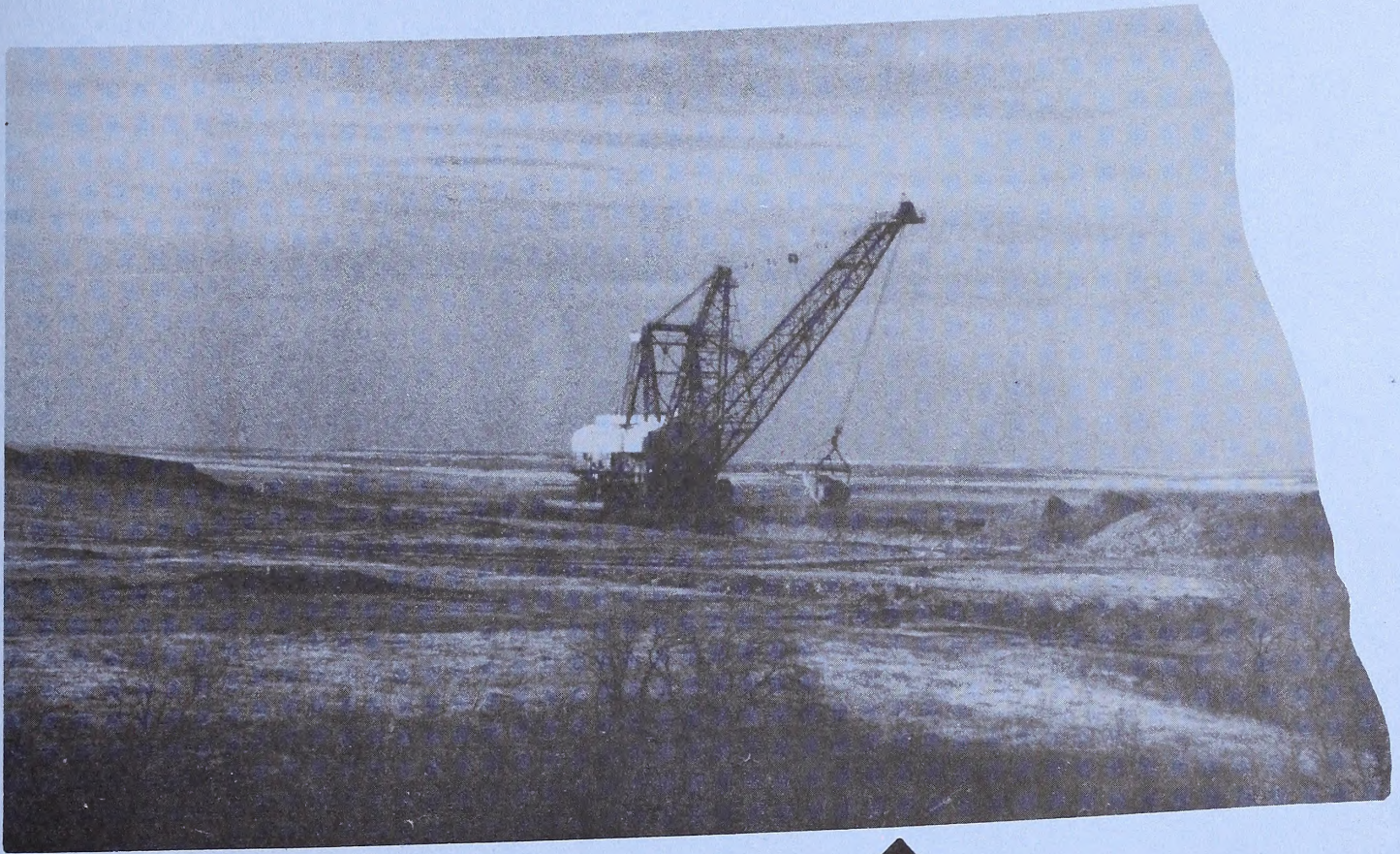


Fred Waldhaus
Resource Data Specialist



Mike Rollins
Soil Scientist

North Dakota District



DICKINSON DISTRICT

Dickinson,
North Dakota

Phone
225-9148



Sandra Nelson
Administrative Assistant

Cynthia Paulson
Administrative Clerk

Connie Schmidt
Mail and File Clerk

Chuck Steele
District Manager

67,961 Surface Acres

4,968,000 Subsurface Acres

Coal

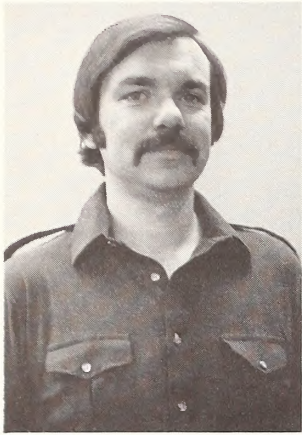
Oil & Gas

Leasing

Reclamation

Planning

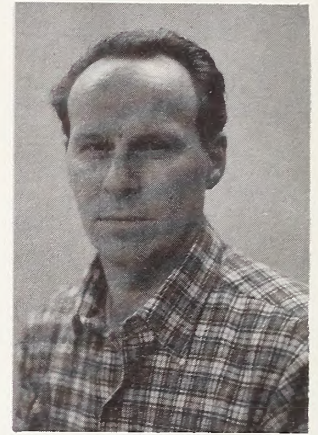
Division of Resource Management and Operations



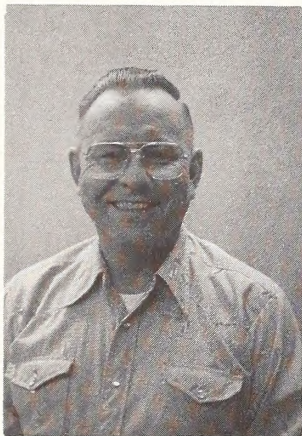
Melvin Ingeroi
Writer Editor
D.M.'s Staff



Gerald Pittman
Chief



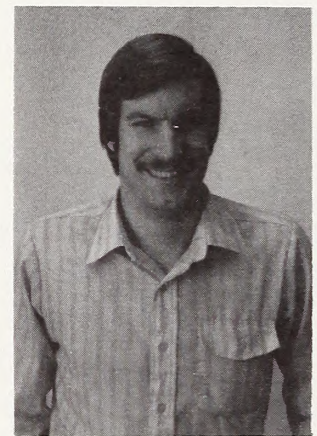
Marvin Hoffer
Wildlife Management Biologist



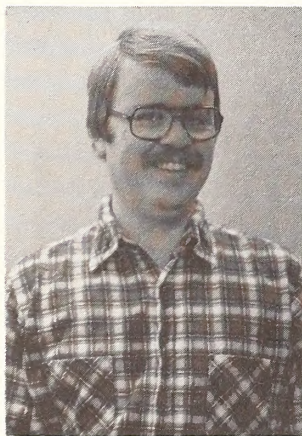
Allen Caldwell
Surface Protection Specialist



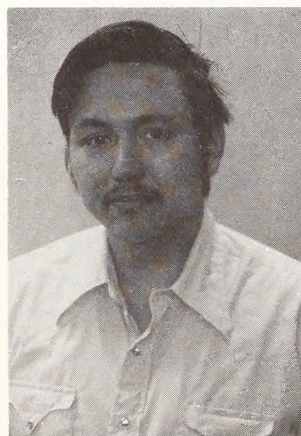
Lyle Chase
Conservationist Agronomist



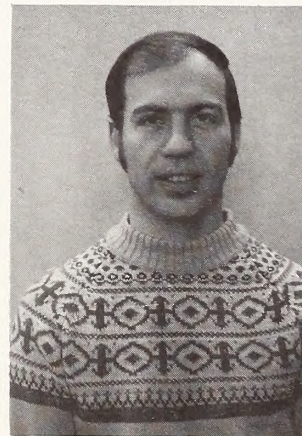
Charles Pettee
Hydrologist



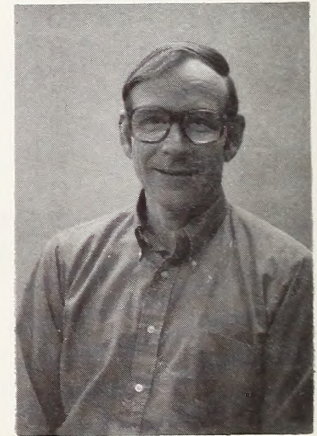
John Bown
Geologist



Don Tibbitts
Range Technician

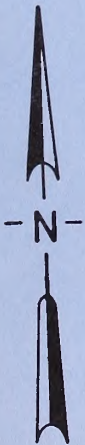
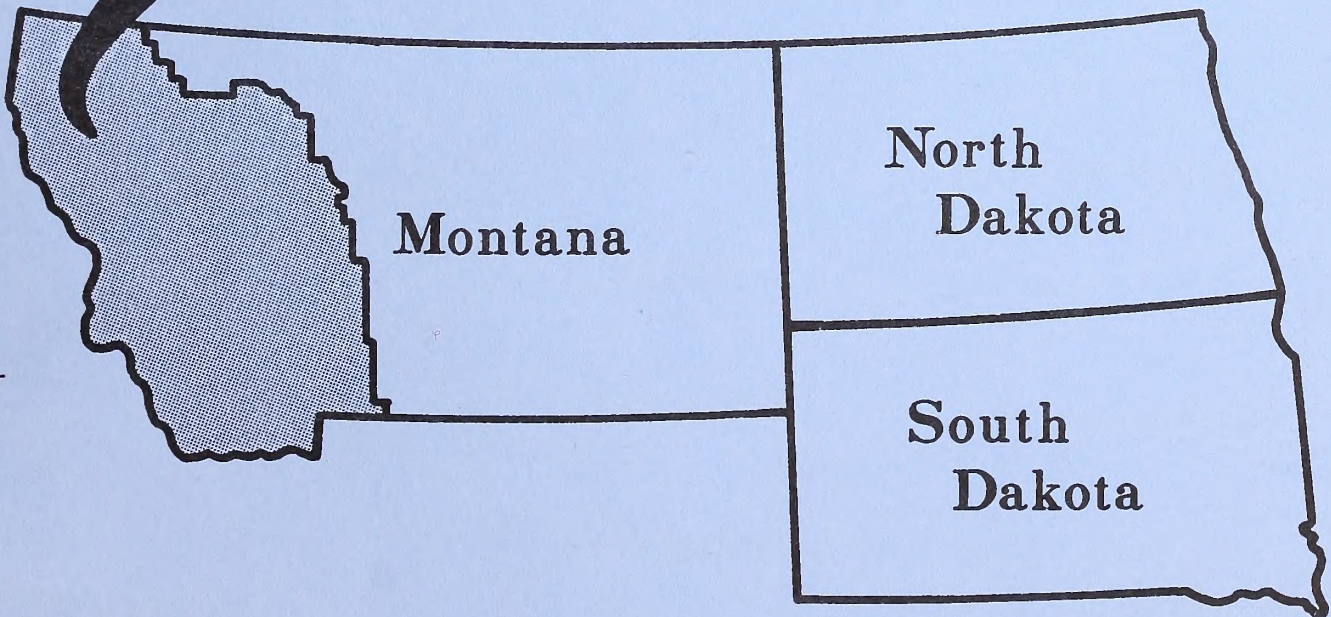
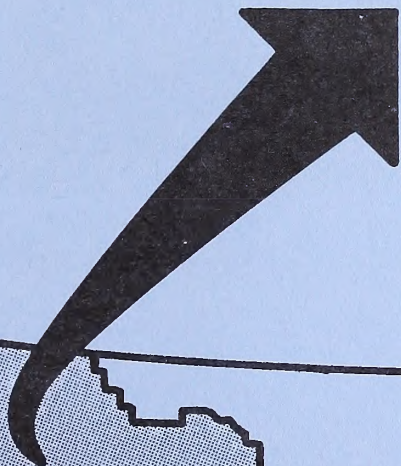


Don Ruffedt
Soil Scientist



Ken Burke
Realty Specialist

Butte District



BUTTE DISTRICT

Butte,
Montana

Phone
723-6561



Jack McIntosh
District Manager

Delores Vavas
Clerk-Typist

Gerald Quinn
Assistant District Manager

Rose Zemljak
Clerk-Typist

1,337,649 Surface Acres

2,285,345 Subsurface Acres

Watershed

Range

Wildlife

Oil & Gas

Minerals

Recreation

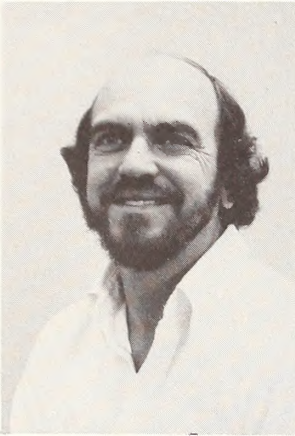
Youth Programs

Wilderness

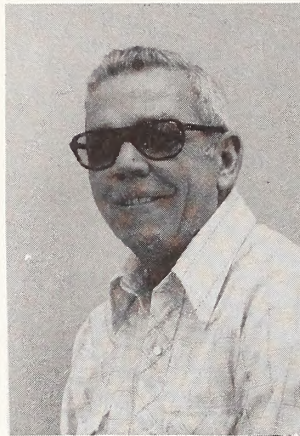
Cultural Resources

Timber

District Manager's Staff



Millard Hulse
Public Information Specialist

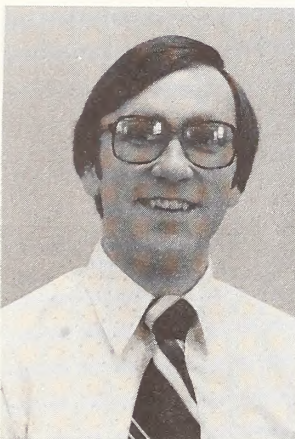


John Buck
YACC Program Coordinator



Deb Clark
YACC Clerk

Division of Administration



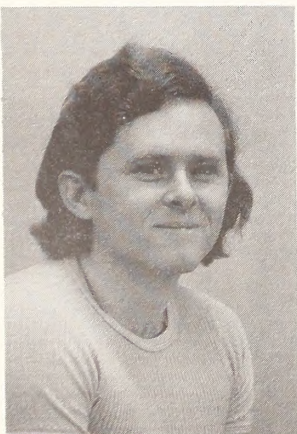
Bradley Brown
Administrative Officer



Polly Elliott
Administrative Assistant



Ann Herman
Purchasing Agent



Bob Stewart
Supply Clerk



Lela Pulis
Accounting Technician



Arvella Holliday
Personnel Clerk

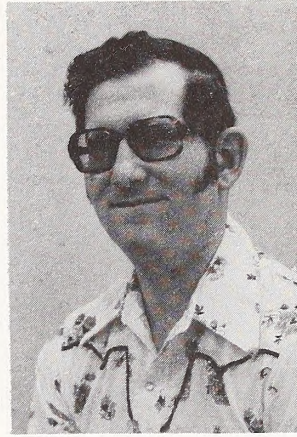


June Merzlak
Mail and File Clerk

Division of Operations



Don Wilson
Supervisory Civil Engineer



Tim Fay
Surface Protection Specialist



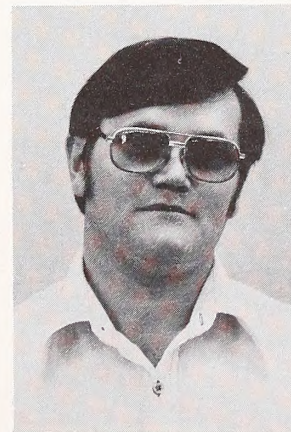
Stephen Black
Civil Engineering Technician



Dallas Westby
Civil Engineering Technician



Sco. Billing
Forester



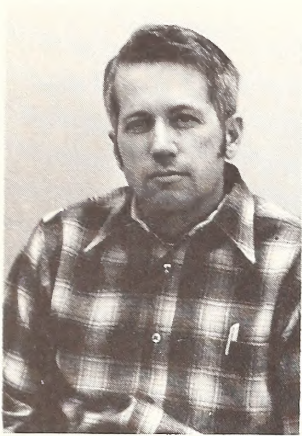
Russell Hotchkiss
Civil Engineering Technician

Not Pictured:

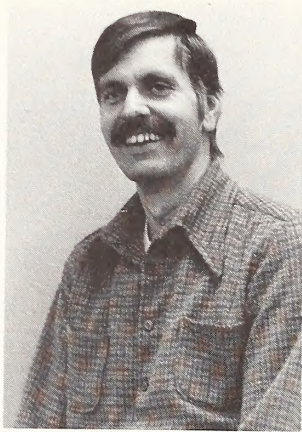
Marshall Martin
Forestry Technician

Al Tibbitts
Civil Engineering Technician

Division of Resources



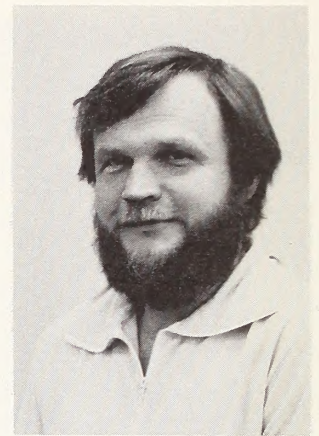
Dave Pickett
Chief



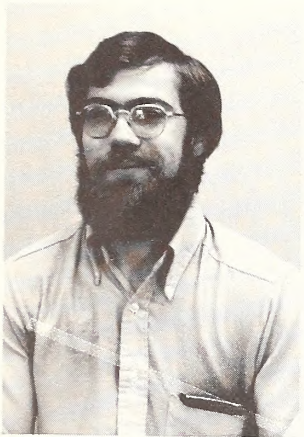
Russell Sorenson
Realty Specialist



Darrell McDaniel
Outdoor Recreation Planner



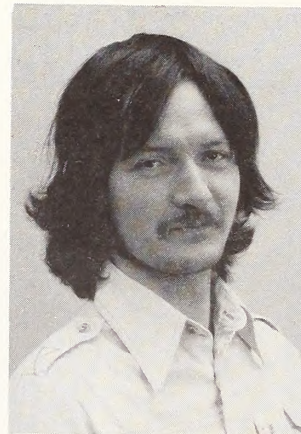
William Torgersen
Forester



Richard Ward
Outdoor Recreation Planner



Jack Jones
Wildlife Management Specialist



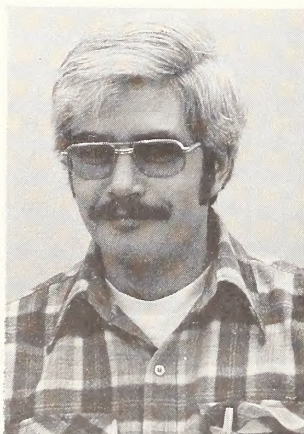
Lawrence Weitzel
Realty Specialist



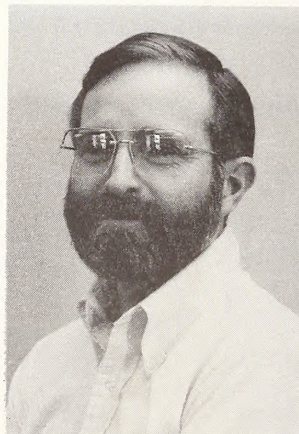
Cynthia Copeland
Outdoor Recreation Planner



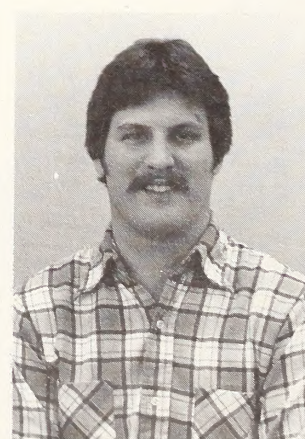
Earl Risberg
Range Conservationist



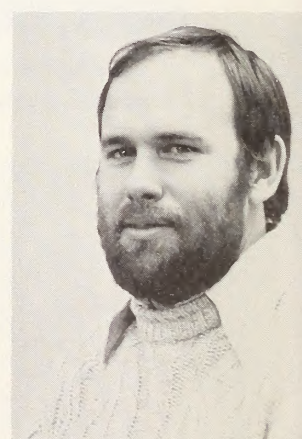
Chuck Frey
Geologist



Clair Silvernale
Soil Scientist

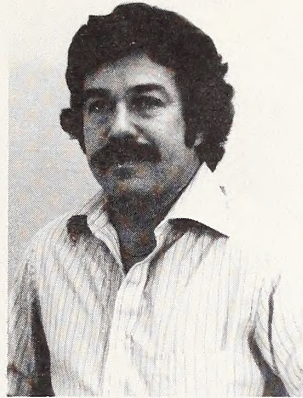


John Sanford
Student Trainee (Realty)

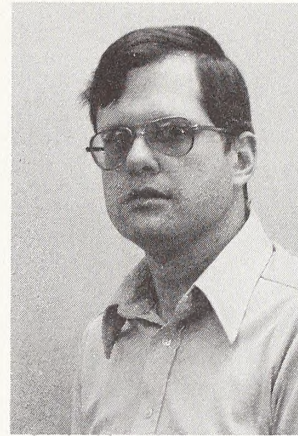


Blaine Miller
Archaeologist

Division of Planning & Environmental Coordination



Gregg Berry
Program Manager



David Nelson
Community Planner



Paul Peek
Fisheries Biologist



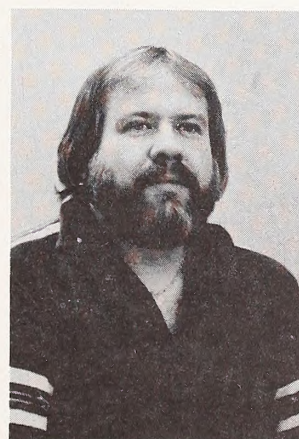
Dave Lomas
Hydrologist



Lou Layman
Writer-Editor



Mark Koski
Visual Information Specialist



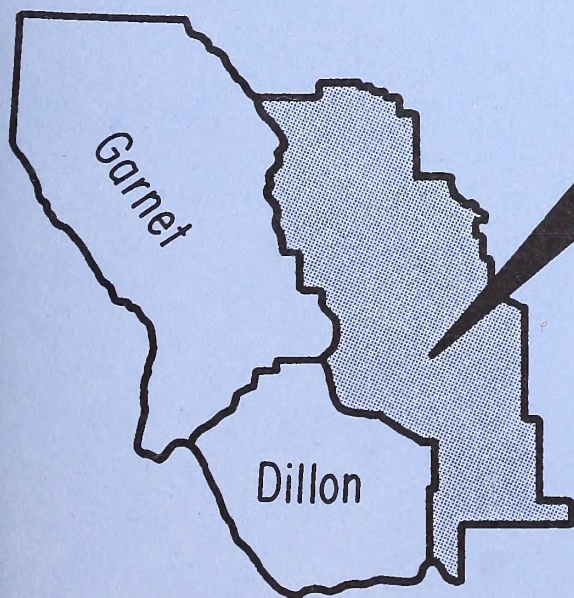
Dave Longey
Landscape Architect



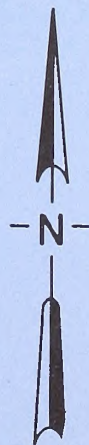
Margie McNellis
Recreation Technician

Headwaters

*Resource
Area*



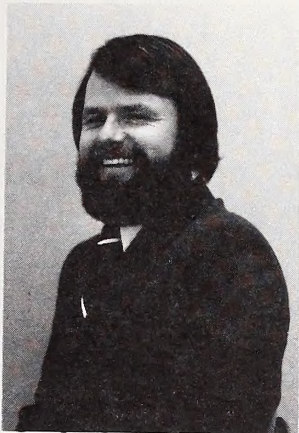
Butte District



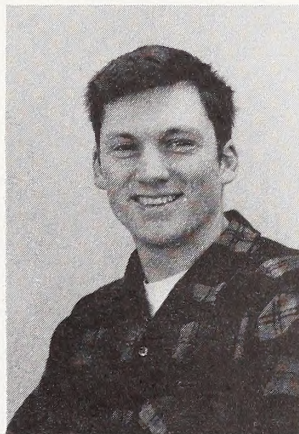
Headwaters Resource Area

Butte,
Montana

Phone
723-6561



Lyle Fox
Area Manager



George Hirschenberger
Range Conservationist



Wayne Elliott
Wildlife Management Biologist



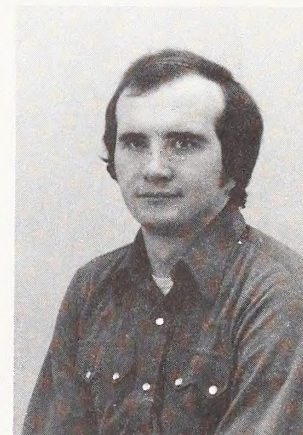
Alexa Watson
Realty Specialist



Mary Alice Stone
Outdoor Recreation Planner



Jim Beaver
Range Conservationist



Mark Petroni
Range Conservationist

Headwaters Resource Management Plan

Oil & Gas — Overthrust Belt

**Sleeping Giant
Recreation Area**

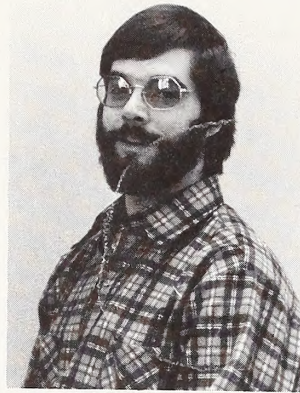
**Colstrip Transmission
Corridor**

Grizzly Bear

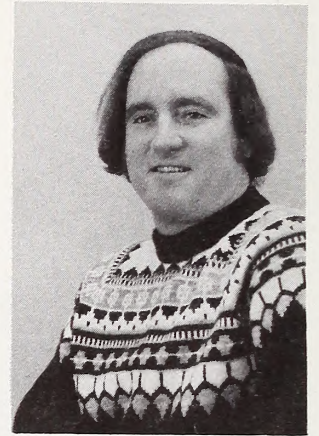
Headwaters Resource Area Staff



John Warnke
Surface Protection Specialist



Edward Wenzel
Wildlife Management Biologist



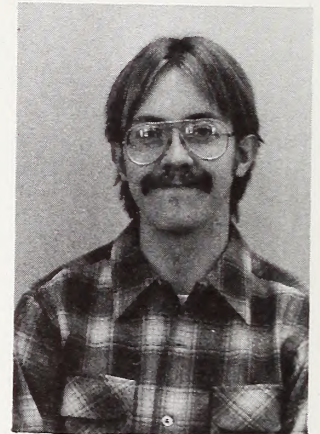
Robert Rodman, Jr.
Realty Specialist



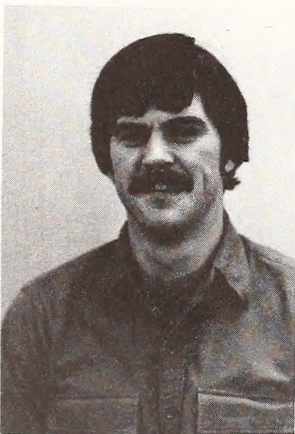
Bernhard Hall
Range Conservationist



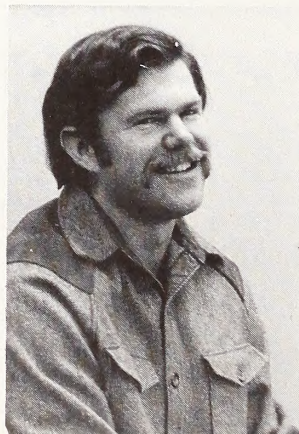
Velma Goody
Clerk (YACC)



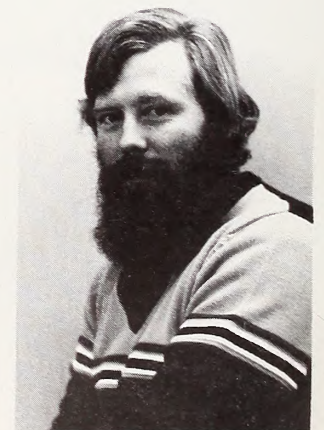
Bill Schurger
Soil Scientist



Brad Rixford
Outdoor Recreation Planner



Tim Bozarth
Hydrologic Technician

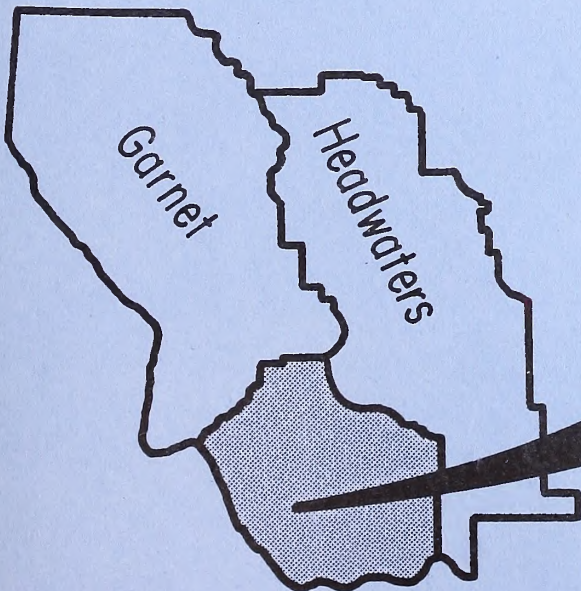


Gregory Smith
Range Aid

Not Picture:

Kenneth Thacker
Student Trainee (Soil Scientist)

Dillon Resource Area



Butte District



Dillon Resource Area

Dillon,
Montana

Phone
683-2337



Agnes Drake
Clerk-Typist

Mavis Love
Clerk (YACC)

Marlene Krause
Clerk

Harry Cosgriffe
Natural Resource Manager

Mountain Foothills Grazing EIS

Wilderness Instant Study Areas

Humbug Spires

Recreation

Bear Trap Canyon

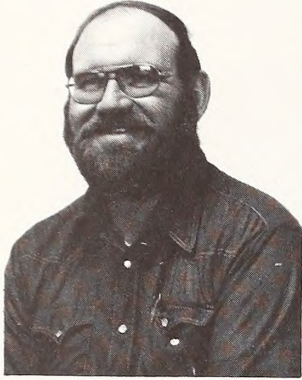
Wildlife

Centennial Mountains

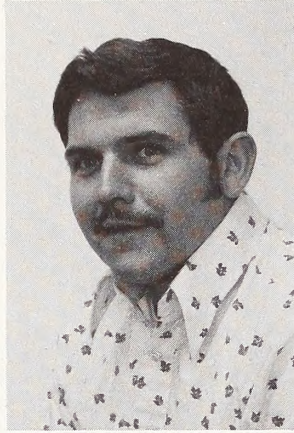
Watershed

Young Adult Conservation Corps
Youth Conservation Corps

Dillon Resource Area Staff



Jack Schield
Supervisory Range Conservationist



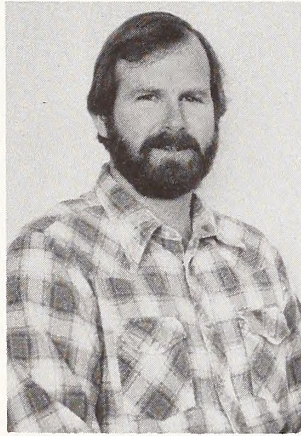
Delon Potter
Forester



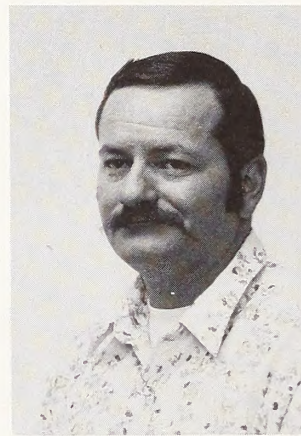
Bruce Botsford
Outdoor Recreation Planner



Lewis Myers
Wildlife Management Biologist



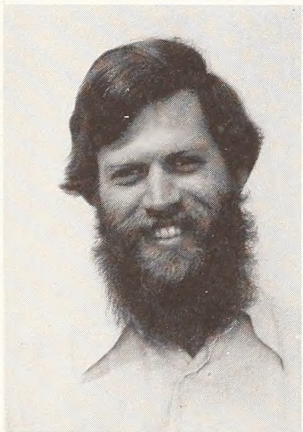
William Fanning
Soil Scientist



Tom Whitmer
Range Conservationist



Nancy Ryan
Range Conservationist



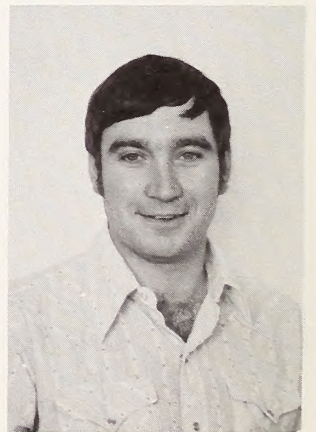
Roger Olson
Hydrologist



James Barclay
Engineering Technician, Civil



David Carr
Forester

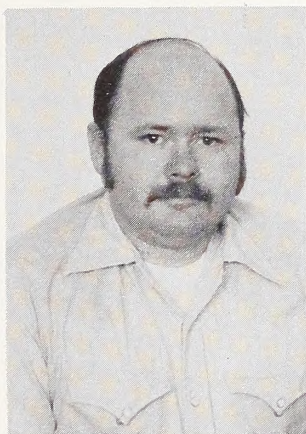


Keith Bartholomay
Range Conservationist

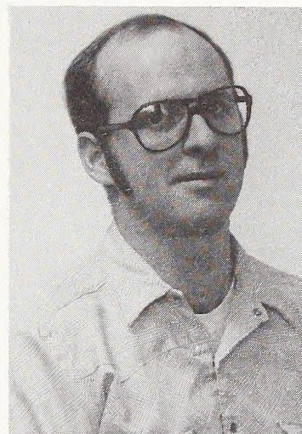
Dillon Resource Area Staff



Chris Nemeth
Range Conservationist



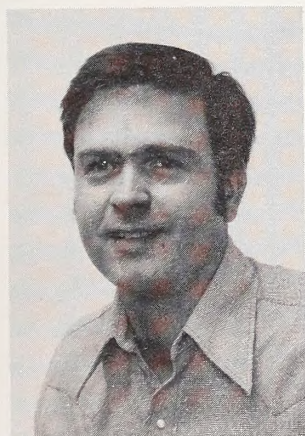
Robert Des Jardins
Range Technician



Louis Hagener
Range Conservationist



Beverly Earle
Archaeologist



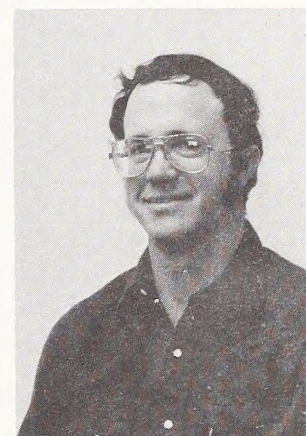
Bart Howells
Range Conservationist



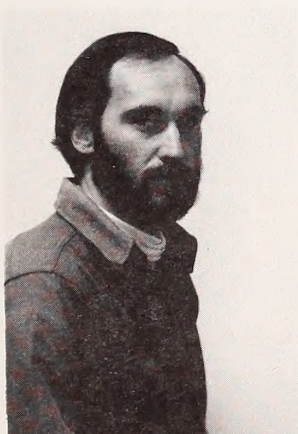
John Augsburger
Natural Resource Specialist



Fred Stokke
Realty Specialist



James Roscoe
Wildlife Management Biologist



Jon Sadowski
Wildlife Management Biologist



Pat McKee
Outdoor Recreation Planner



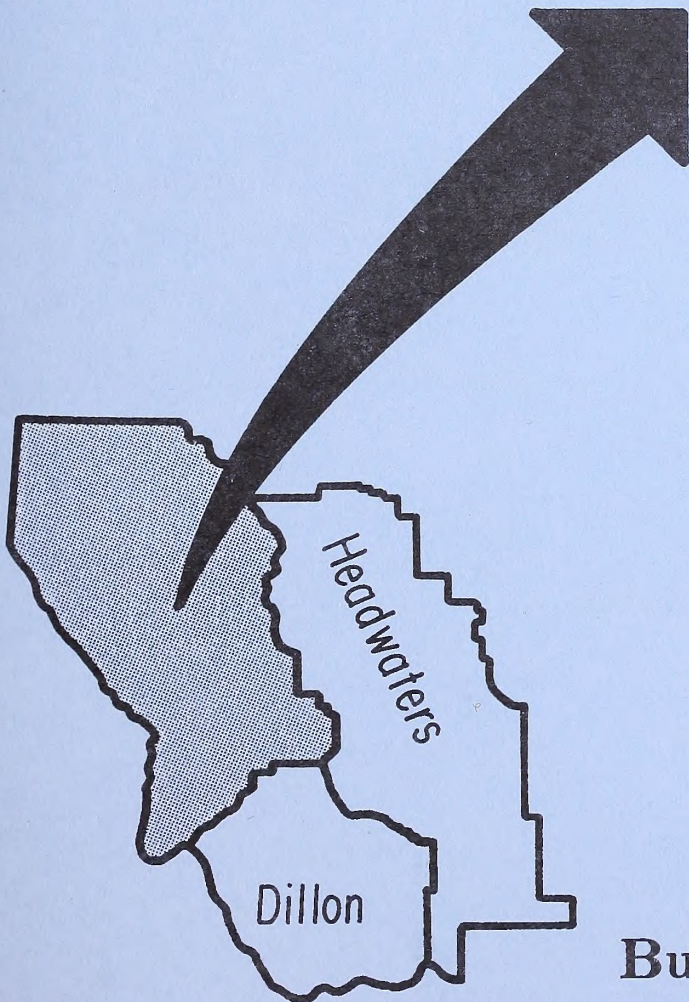
James Jordan
Forestry Technician



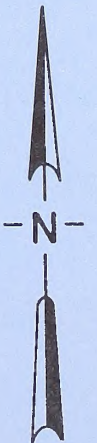
Wallace Miller
Forestry Technician

Not Pictured: Joy Boka
Clerk-Typist

Garnet Resource Area



Butte District



Garnet Resource Area

Missoula,
Montana

Phone
329-3686



David Baker
Outdoor Recreation Planner

Darrell Sall
Natural Resource Manager

Marla McCombie
Clerk-Typist

Susan Brist
Clerk-Typist

Ruth DeBorde
Clerk

Elk/Logging Study

Watershed

Range

Timber

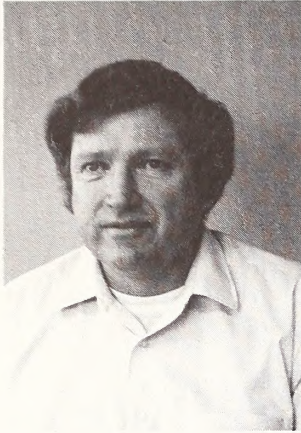
Youth Conservation Corps

Garnet Historical District

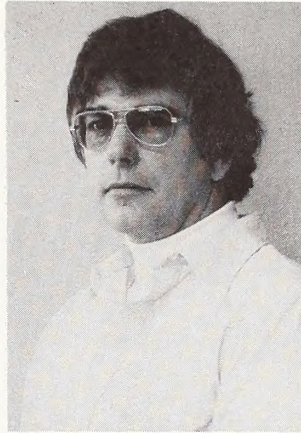
Wilderness

Young Adult Conservation Corps

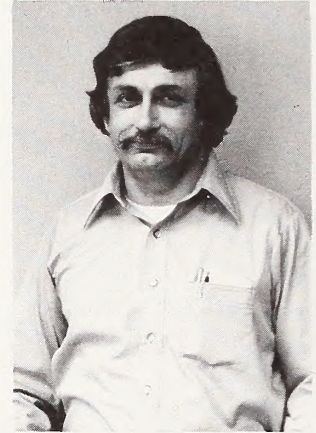
Garnet Resource Area Staff



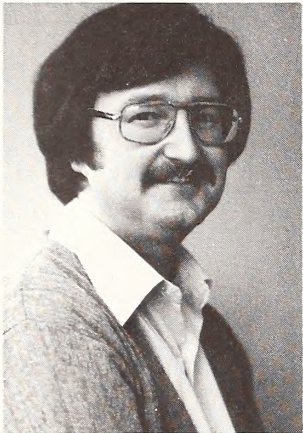
Tom Brown
Realty Specialist (Access)



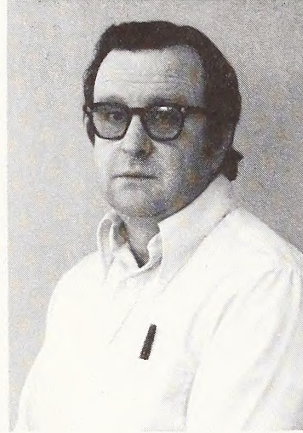
Richard Betts
Supervisory Forester



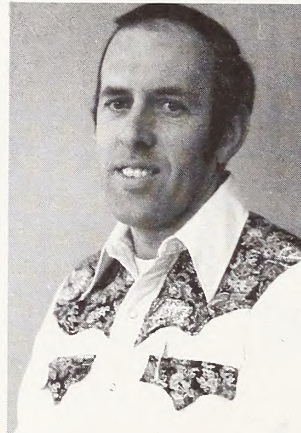
Vito Ciliberti
Soil Scientist



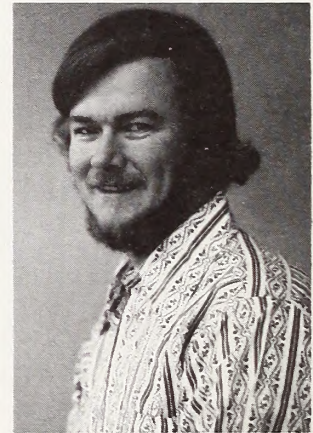
Russell Reichelt
Civil Engineer



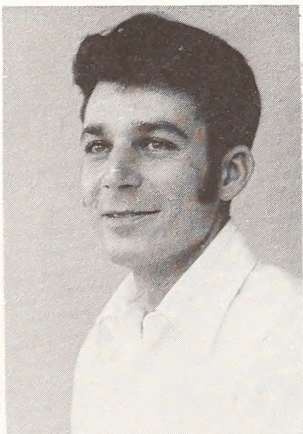
Ken Breon
Forester



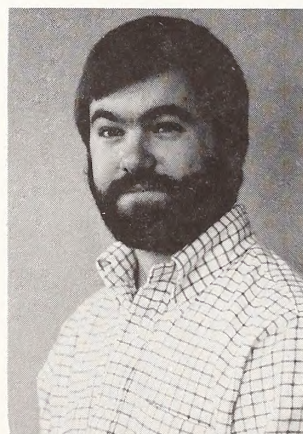
Lawrence Newman
Range Conservationist



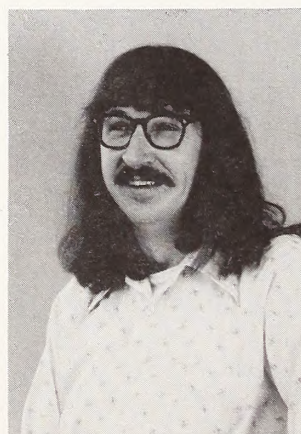
Alan Wahlin
Caretaker



Bill Rich
Engineering Technician, Civil



John Weinert
Forestry Technician

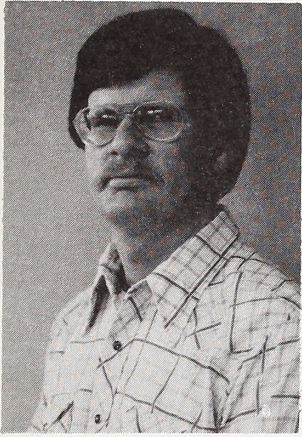


Steven Williams
Forestry Technician

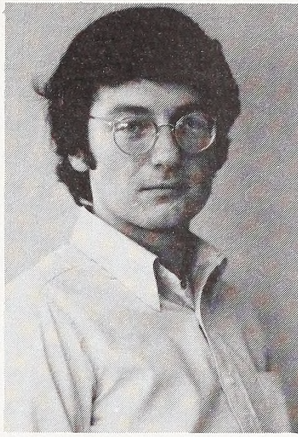


Mindy Mason
Geologist

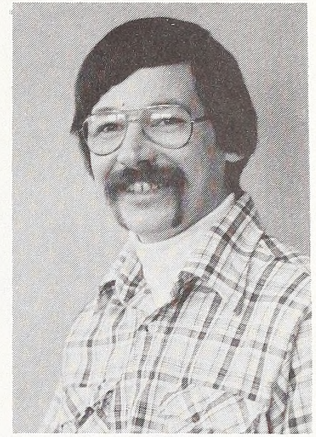
Garnet Resource Area Staff



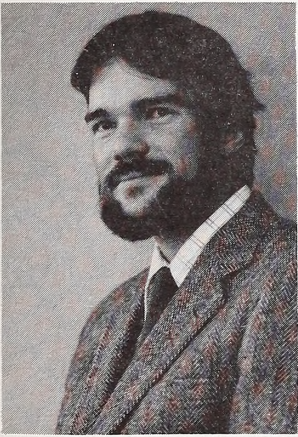
John Sullivan
Range Conservationist



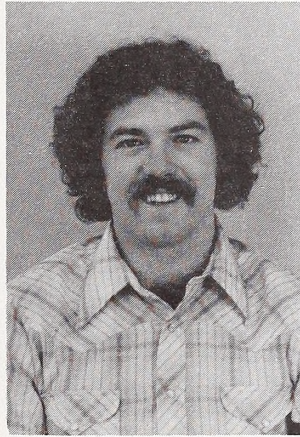
Henry Koch, Jr.
Forester



Steve Eckert
Forestry Technician



Tom Daer
Forester



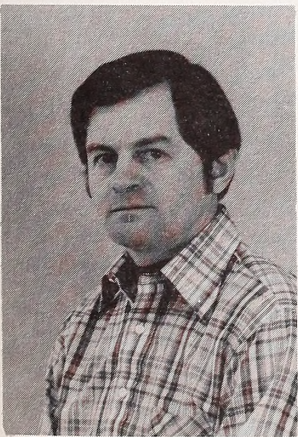
Robert Hazelwood
Wildlife Management Biologist



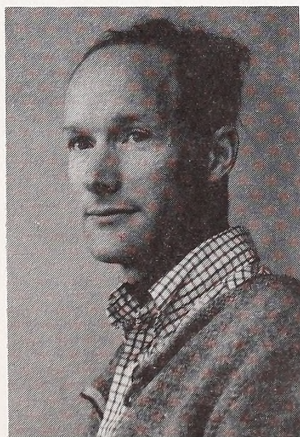
Alexina McCullough
Realty Specialist



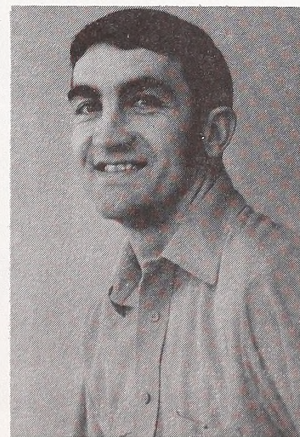
Dave McCleery
Wildlife Management Biologist



John Prange
Wildlife Management Biologist



John Karplus
Civil Engineering Technician



David Barney
Forester

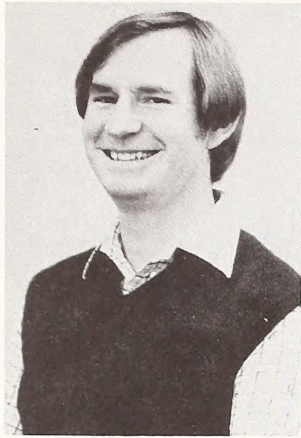
Not Pictured:

Chester Wheelless
Fishery Biologist

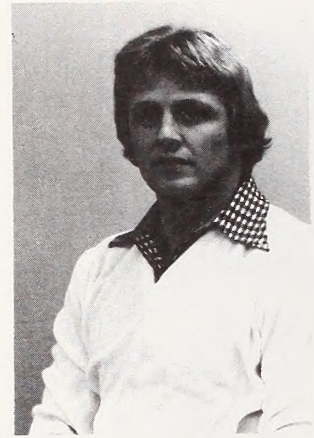
Thomas Hughes
Student Trainee (Hydrologist)

Mike Small
Student Trainee (Forester)

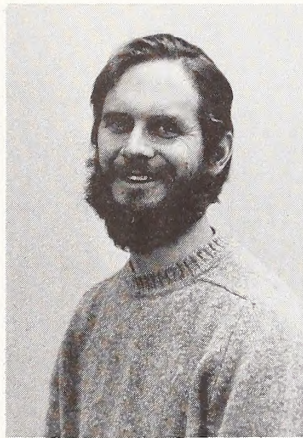
YACC Program



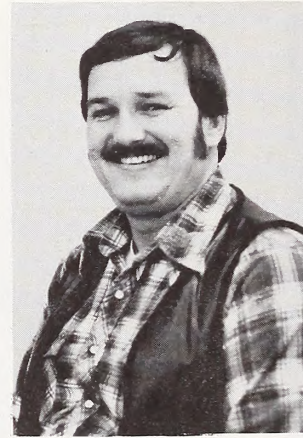
Larry Vavruska
Program Manager



Terry Vanderpan
Area Work Project Director



Ernest Moss
Supervisory Range Technician



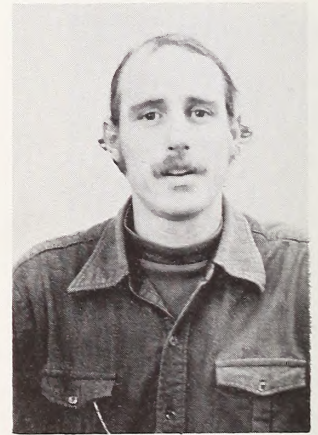
Gerald Reh
Supervisory Range Technician



Jack Powers
Enrollee Supervisor

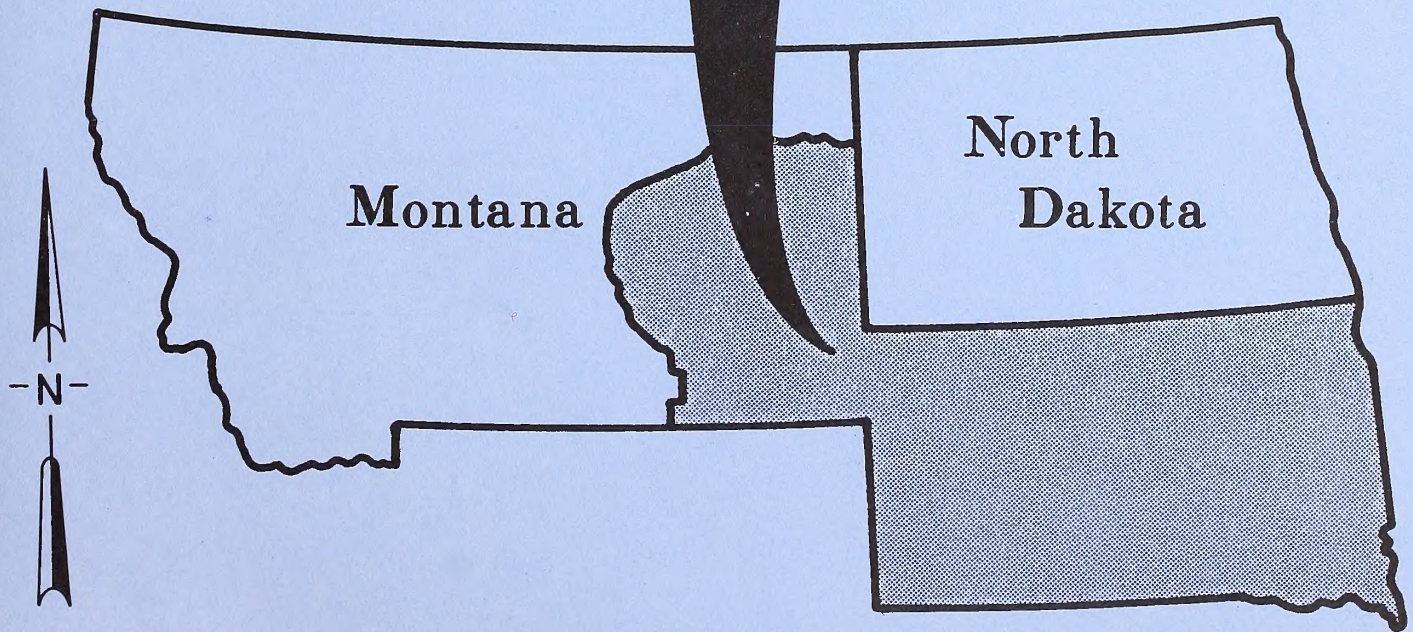
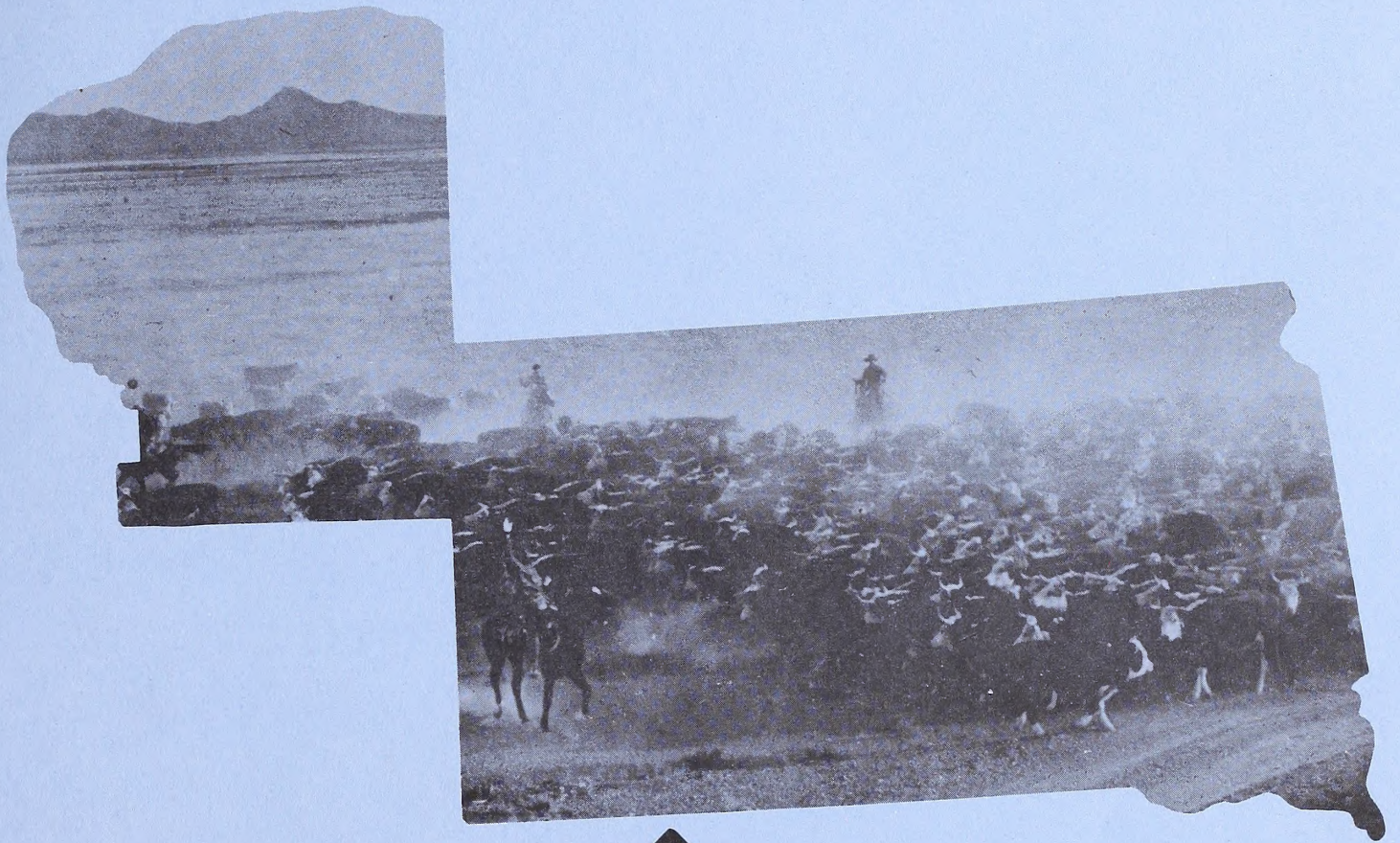


Eric Norris
Supervisory Range Technician



William Stalker
Work Coordinator

Miles City District



MILES CITY DISTRICT

Miles City,
Montana

Phone
232-4331



George Neuberg
District Manager

Bonnie Anton
Clerk-Typist

Kathy Urick
Clerk-Typist

Debra Hofer
Clerk-Typist

Robert Teegarden
Assistant District Manager

Janet Wilson
Mail and File Clerk

3,094,735 Surface Acres

11,710,741 Subsurface Acres

Planning

Watershed

Reclamation

Oil & Gas

Wildlife

Timber

Leasing

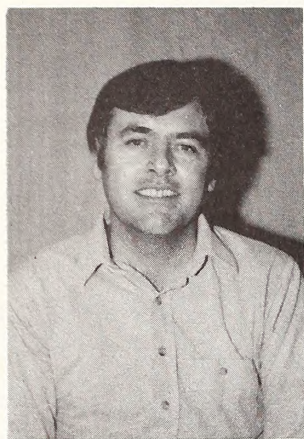
Minerals

Coal

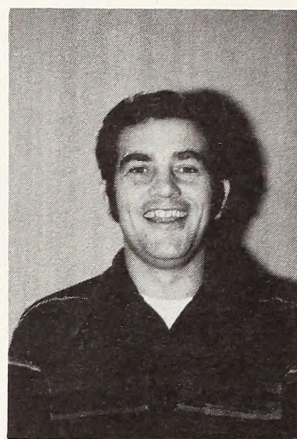
Range

Youth Conservation Corps

District Manager's Staff

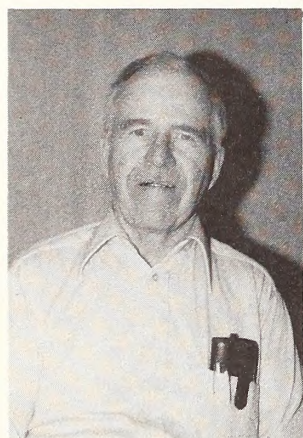


John Guerin
Public Information Specialist



Kenneth Damm
Training Specialist (Environmental Education)

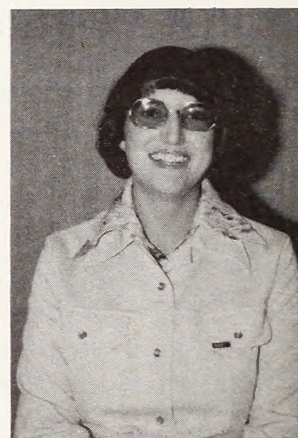
Division of Administration



Scottie (George) Gray
Administrative Officer



Mary Lou Falconer
Administrative Assistant



Jacqueline Anderson
Personnel Clerk



Pam Loomis
Administrative Clerk



Diane Blakesley
Procurement Clerk

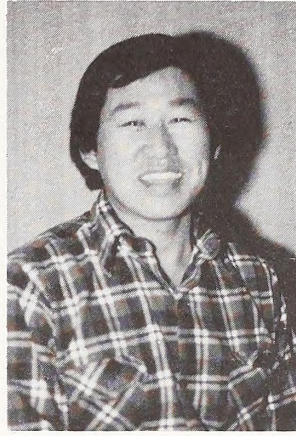


Sandra Scheid
Library Aid

Division of Operations



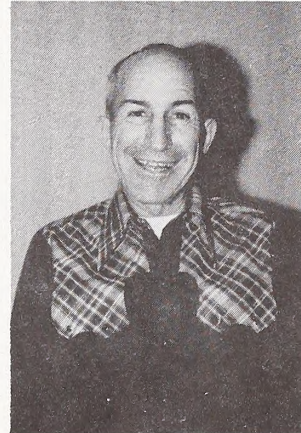
James Faith
Civil Engineer



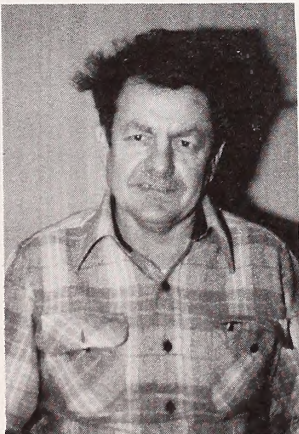
Curtis Kunugi
Civil Engineer Technician



Dennis Hoyem
Natural Resource Specialist



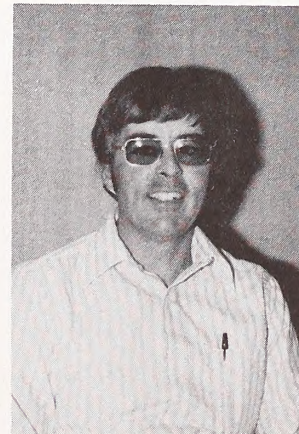
William Perschillo
Range Technician



Dennis Jones
Range Conservationist



Harvy Wolf
Temporary Range Technician



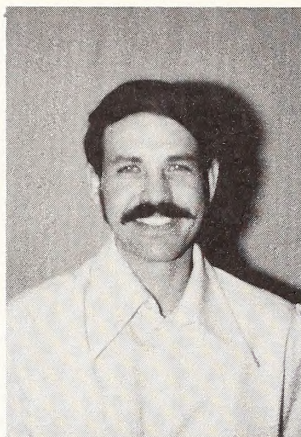
Gerald Chapman
Range Technician

Not Pictured: Rebecca Holzheimer
Cartographic Technician

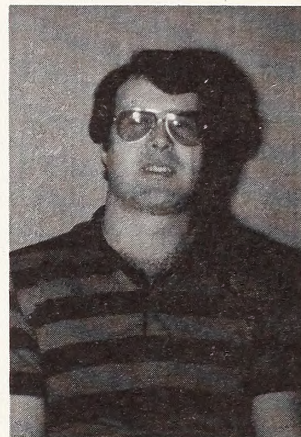
Division of Resources



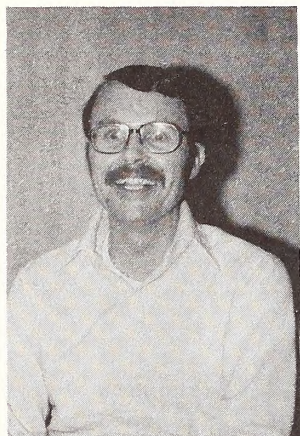
Bruce Whitmarsh
Supervisory Natural Resource Specialist



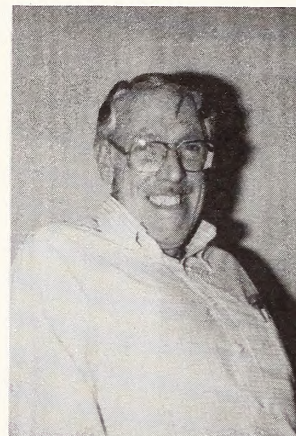
Jerry Jacobs
Realty Specialist



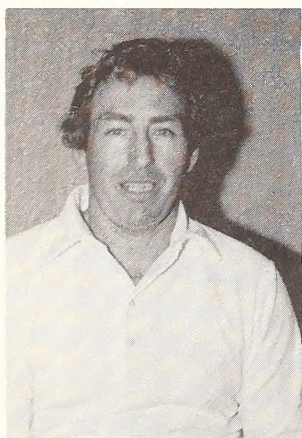
Bill Hill
Geologist



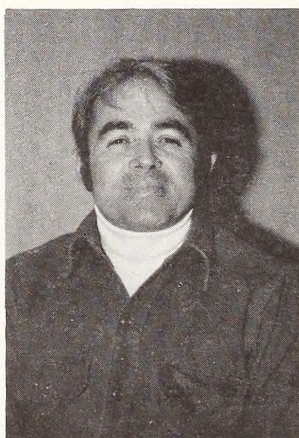
Gerald Clark
Archaeologist



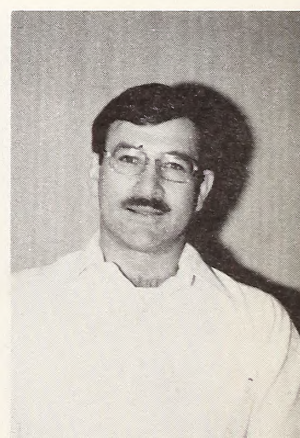
Bob Lieurance
Forester



Verden Lavin
Range Conservationist

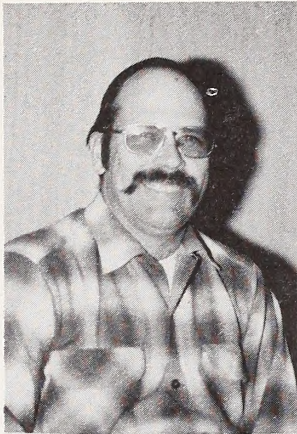


Dan Bricco
Wildlife Management Biologist



William Volk
Soil Scientist

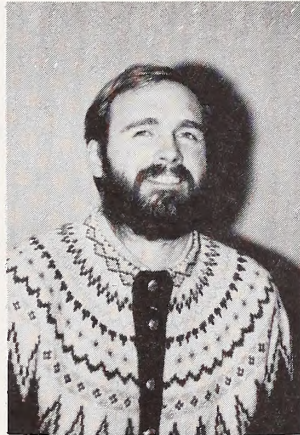
Division of Resources



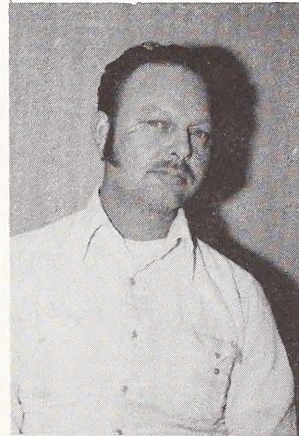
Ed McTaggart
Outdoor Recreation Planner



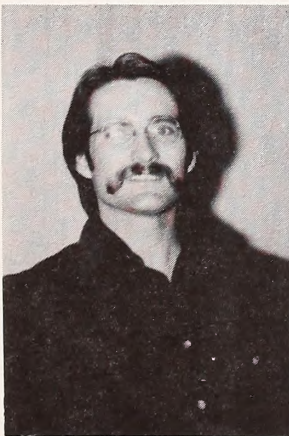
Verle Wenneker
Realty Specialist



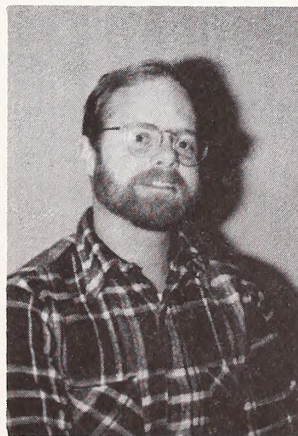
Chris Roholt
Outdoor Recreation Planner



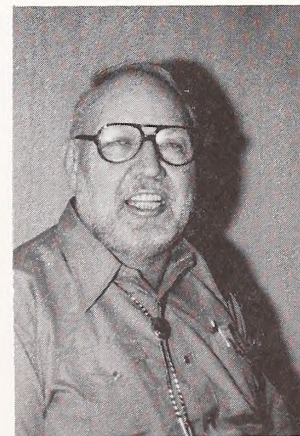
Gaylon Wilcox
Realty Specialist



William Fraley
Archaeologist

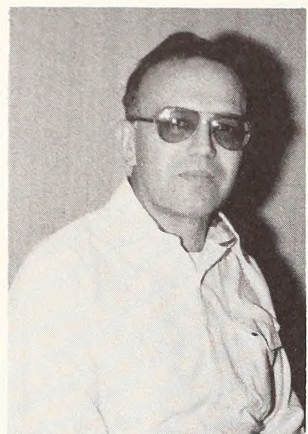


Mark Gorges
Fisheries Biologist

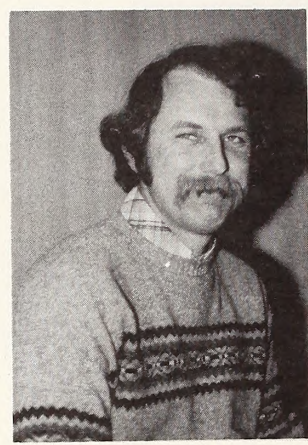


Estel Ludlow
Wildlife Management Biologist

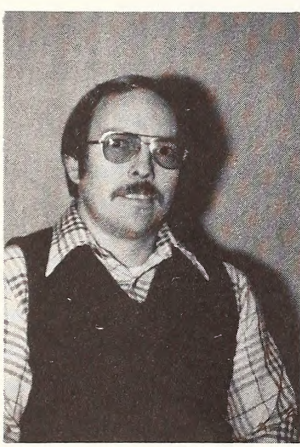
Division of Planning and Environmental Coordination



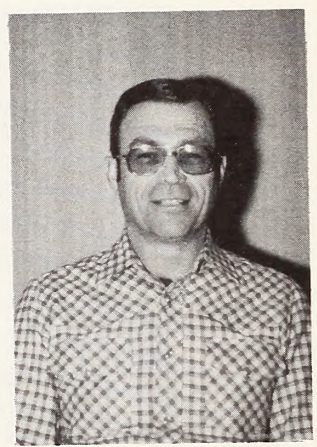
Harlan Hayes
Program Manager



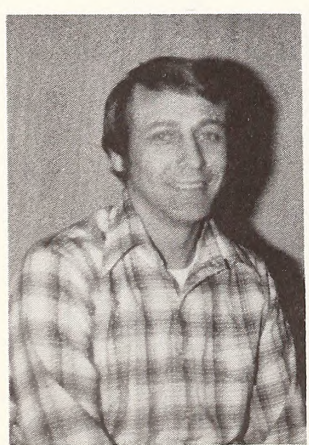
Keith Bennett
Regional Economist



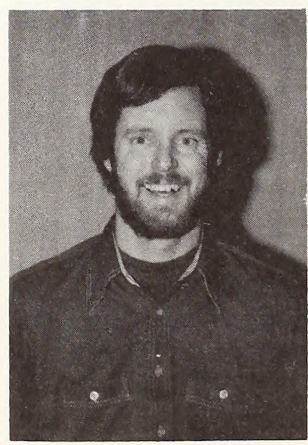
James Murkin
Environmental Specialist



Dwight Conley
Planning Coordinator



Al Pierson
Outdoor Recreation Planner

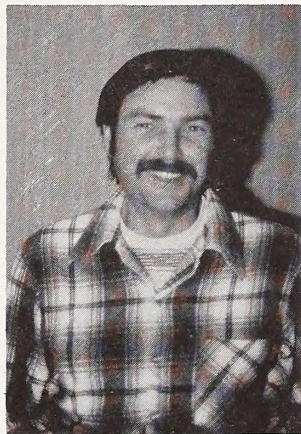


Harley Davis
Hydrologist



Henry McNeel
Conservation Agronomist

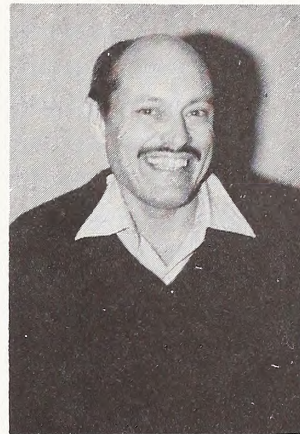
Division of Planning and Environmental Coordination



Edward Heffern
Geologist



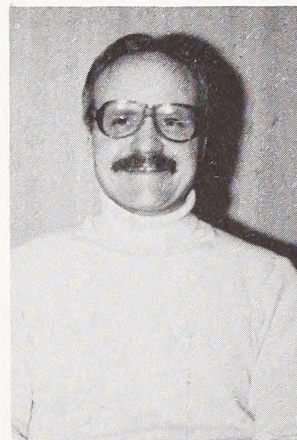
Douglas Hooper
Sociologist



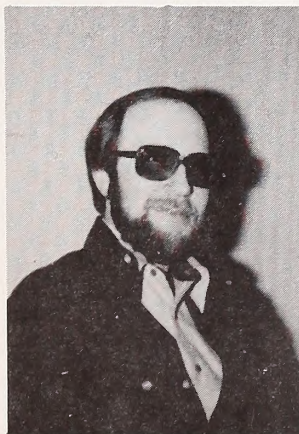
James Hetzer
Writer Editor



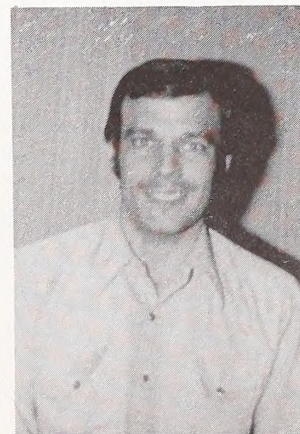
James Albano
Soil Conservationist



Hugh Livingston
Range Conservationist

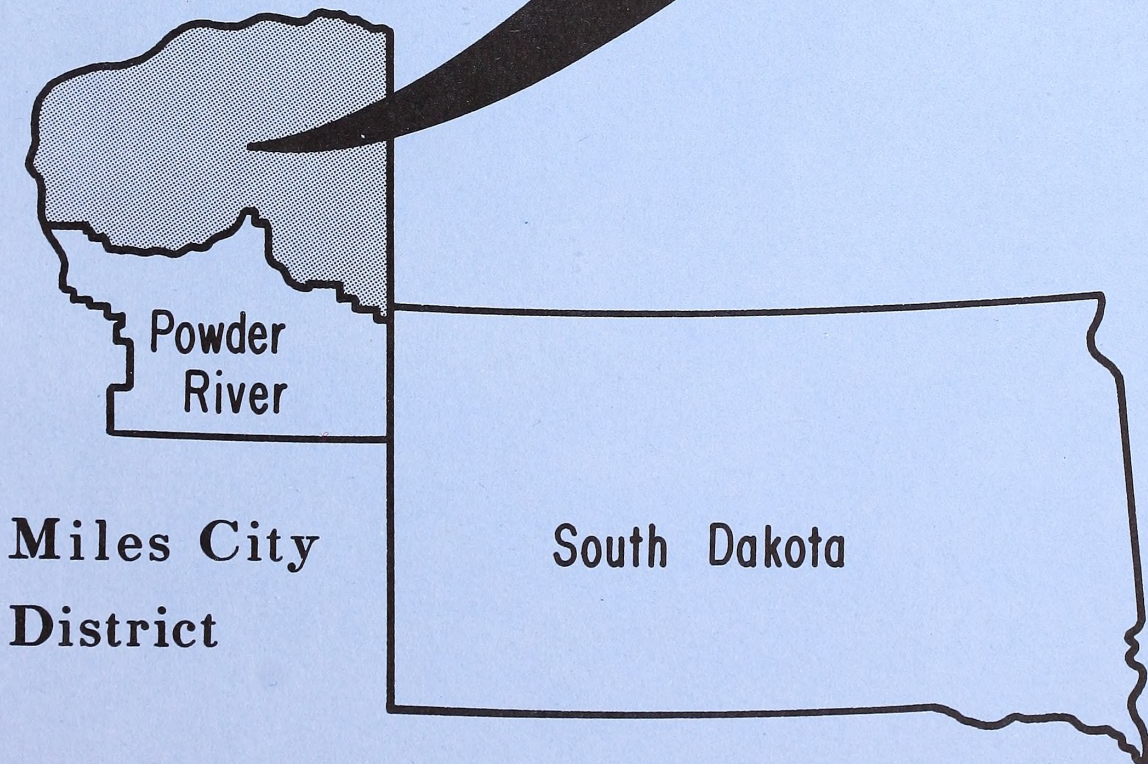


Richard Zander
Wildlife Management Biologist



Fred Wambolt III
Range Conservationist

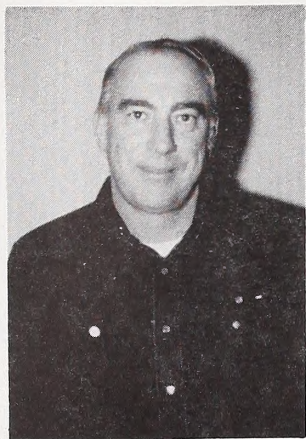
Big Dry Resource Area



Big Dry Resource Area

Miles City,
Montana

Phone
232-4331



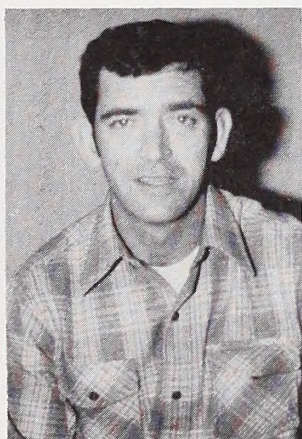
Don Nelson
Natural Resource Manager



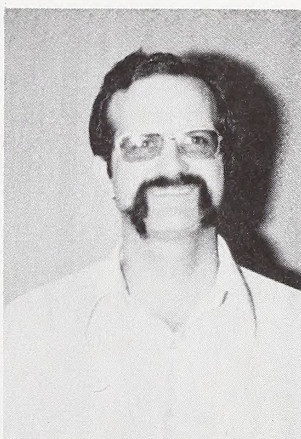
Clarence Pack
Natural Resource Specialist



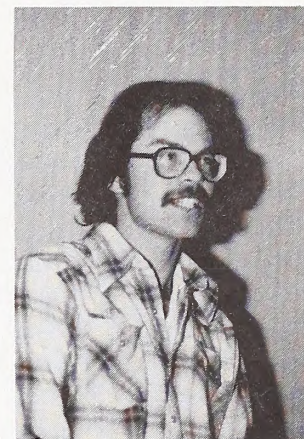
Gerald Gill
Wildlife Management Biologist



Allen Kutt
Supervisory Natural Resource Specialist



Dex Hight
Hydrologist



Chester Novak
Soil Scientist

Watershed

Oil & Gas

Wildlife

Reclamation

Coal

Range

Leasing

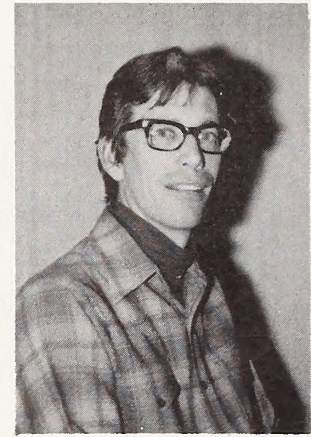
Big Dry Resource Area Staff



Gary Peterson
Range Technician



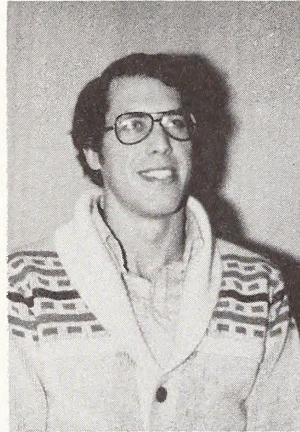
Dalice Landers
Range Technician



Ladd Coates
Outdoor Recreation Planner



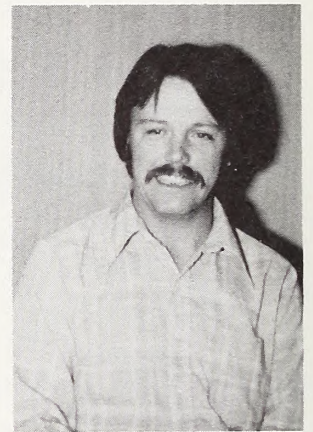
William Matthews
Wildlife Management Biologist



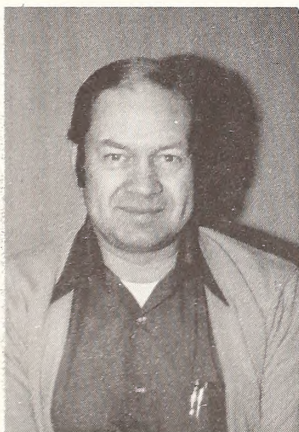
Robin Stoebe
Range Conservationist



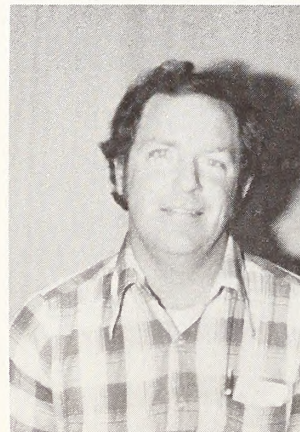
Robert Bump
Soil Conservationist



Jim Munson
Wildlife Management Biologist



Loren Glade
Realty Specialist



Keith Wittenhagen
Range Conservationist

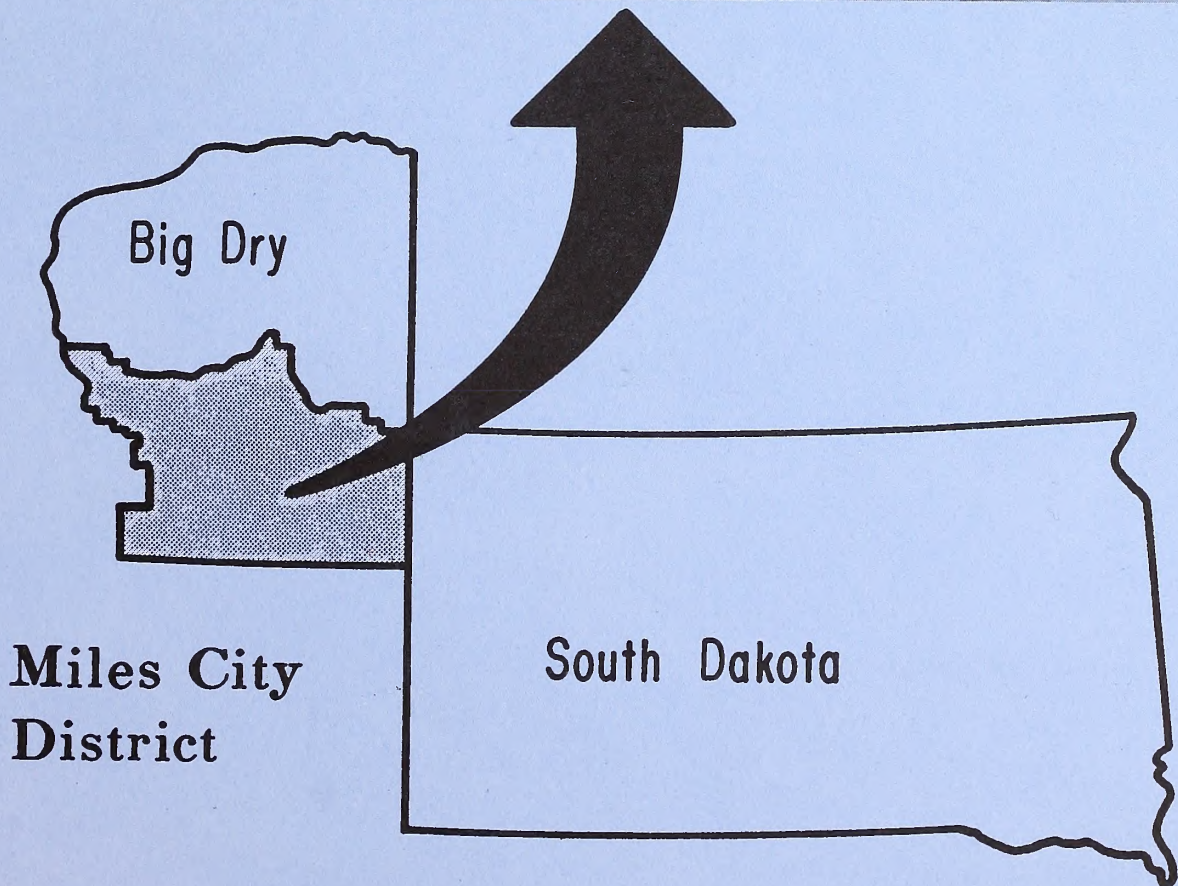


Beverly Sallgren
Range Technician



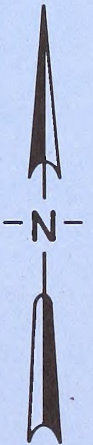
Diana Winkler
Range Aid

Powder River Resource Area



**Miles City
District**

South Dakota



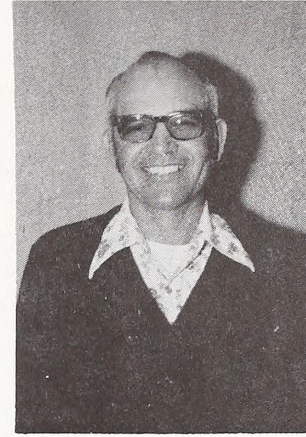
Powder River Resource Area

Miles City,
Montana

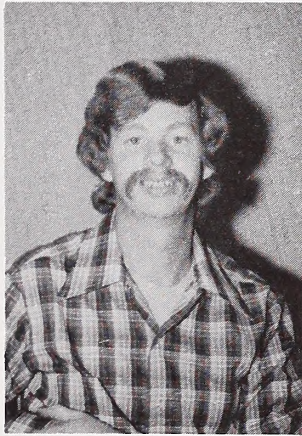
Phone
232-4331



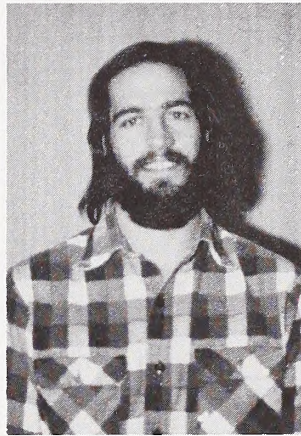
Robert Bennett
Natural Resource Manager



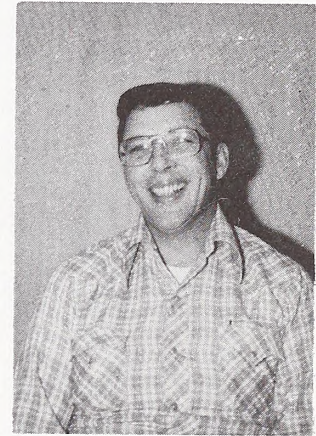
Vernon Taylor
Supervisory Range Conservationist



Dale Hanson
Range Conservationist



Peter Bierbach
Hydrologist



Richard Thompson
Realty Specialist

Range

Watershed

Reclamation

Coal

Oil & Gas

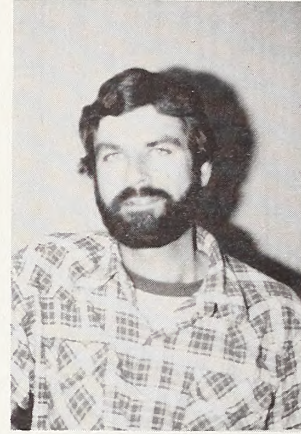
Wildlife

Leasing

Powder River Resource Area Staff



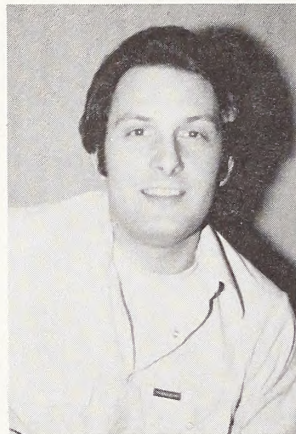
John Laudon
Geologist



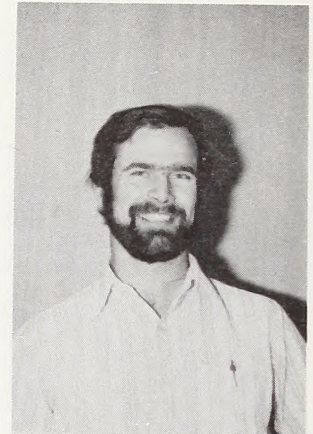
Tom Schley
Archaeologist



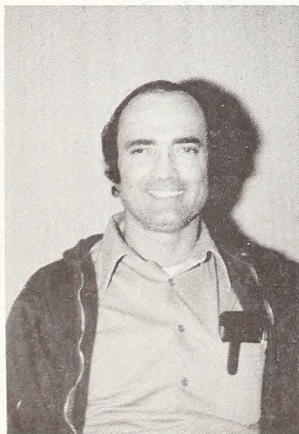
Ken Frazier
Wildlife Management Biologist



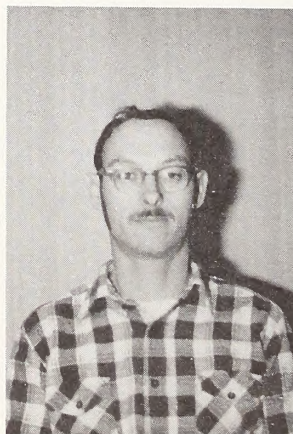
Martin Holmes
Range Conservationist



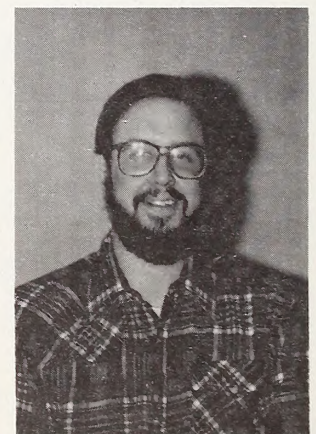
Clarence Seago
Soil Scientist



Gordon Cormier
Range Conservationist

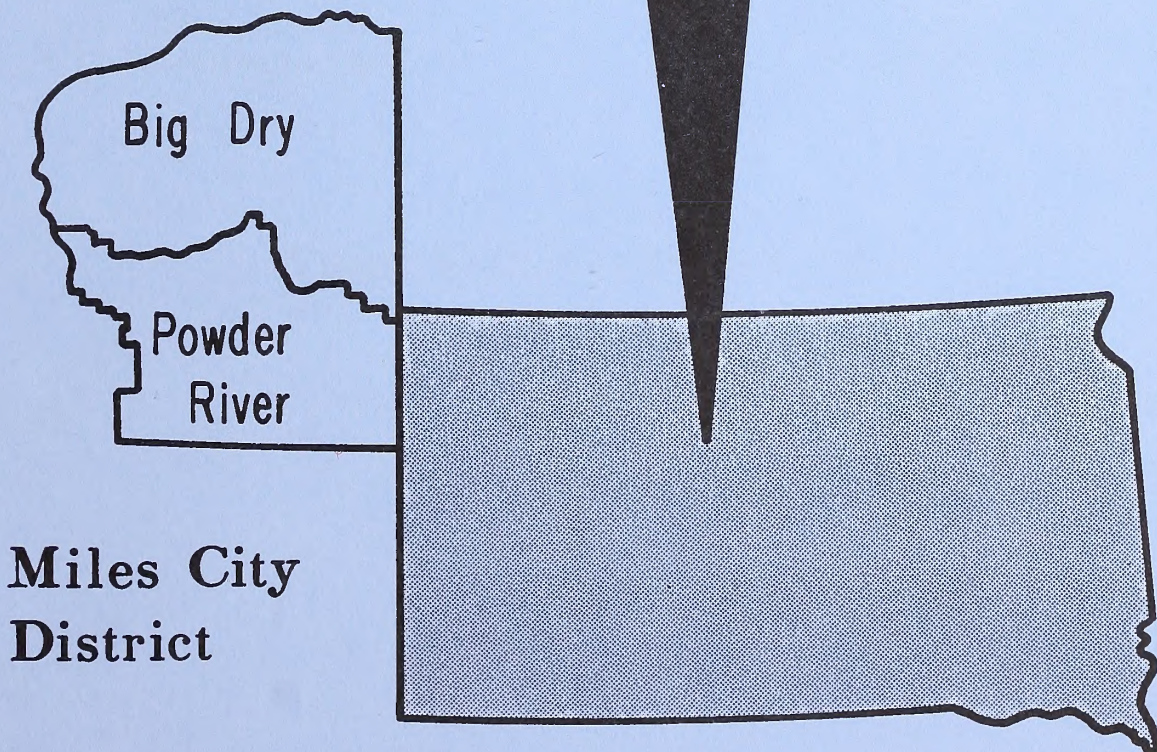


David Child
Range Aid



David Kelly
Range Conservationist

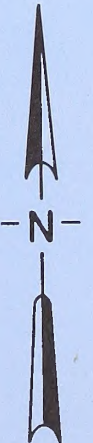
South Dakota Resource Area



Big Dry

Powder
River

Miles City
District



South Dakota Resource Area

Belle Fourche,
South Dakota

Phone
892-2526



Mildred Kokesh
Administrative Clerk

Billy McIlvain
Natural Resource Manager

Youth Conservation Corps

Timber

Oil & Gas

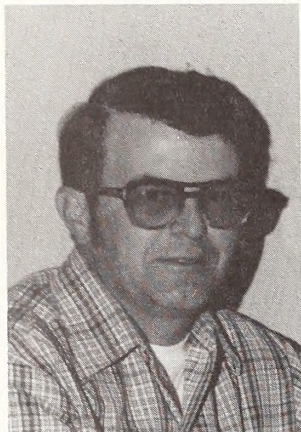
Bentonite

Watershed

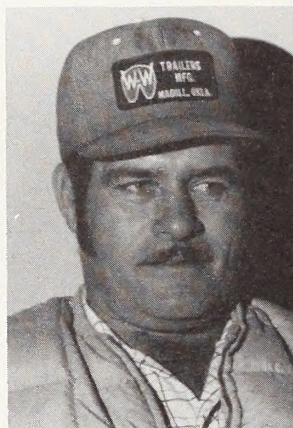
Uranium

Range

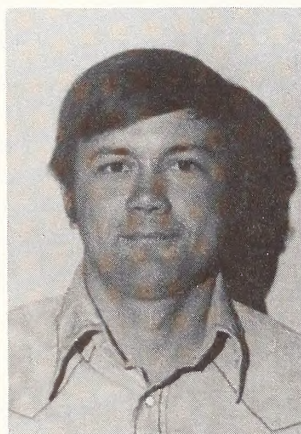
South Dakota Resource Area Staff



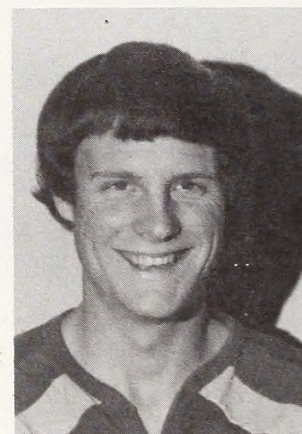
Jim Sisk
Natural Resource Specialist



William Crockford
Natural Resource Technician



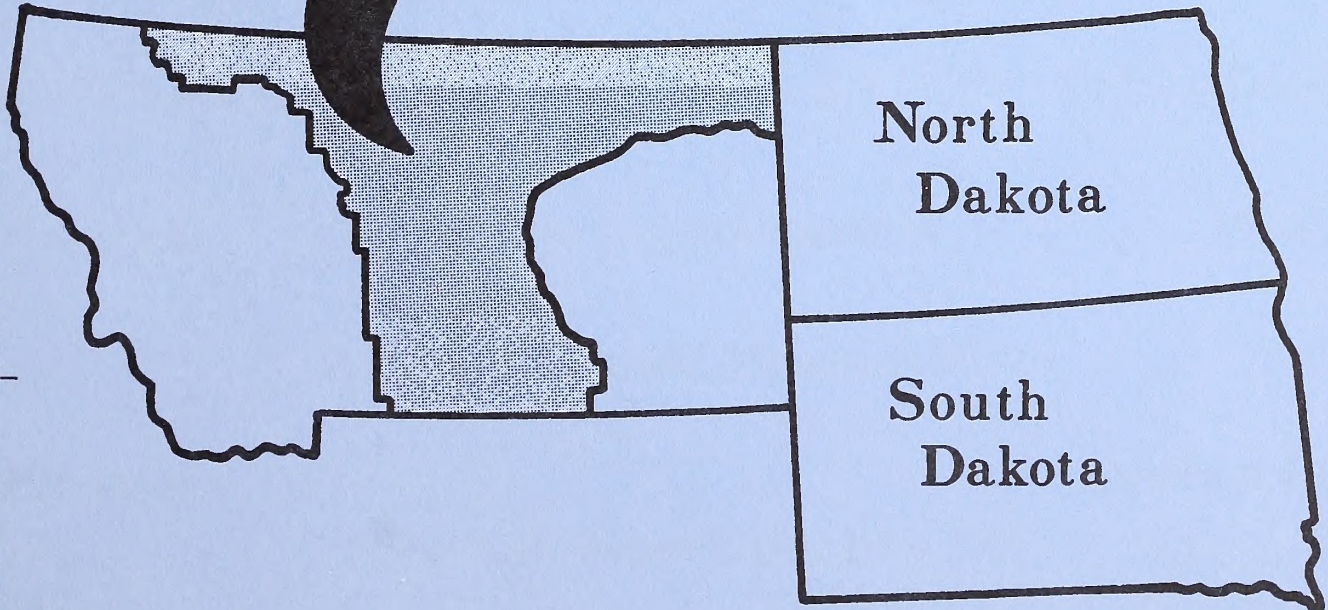
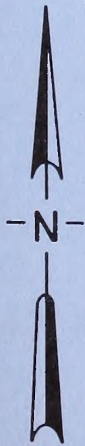
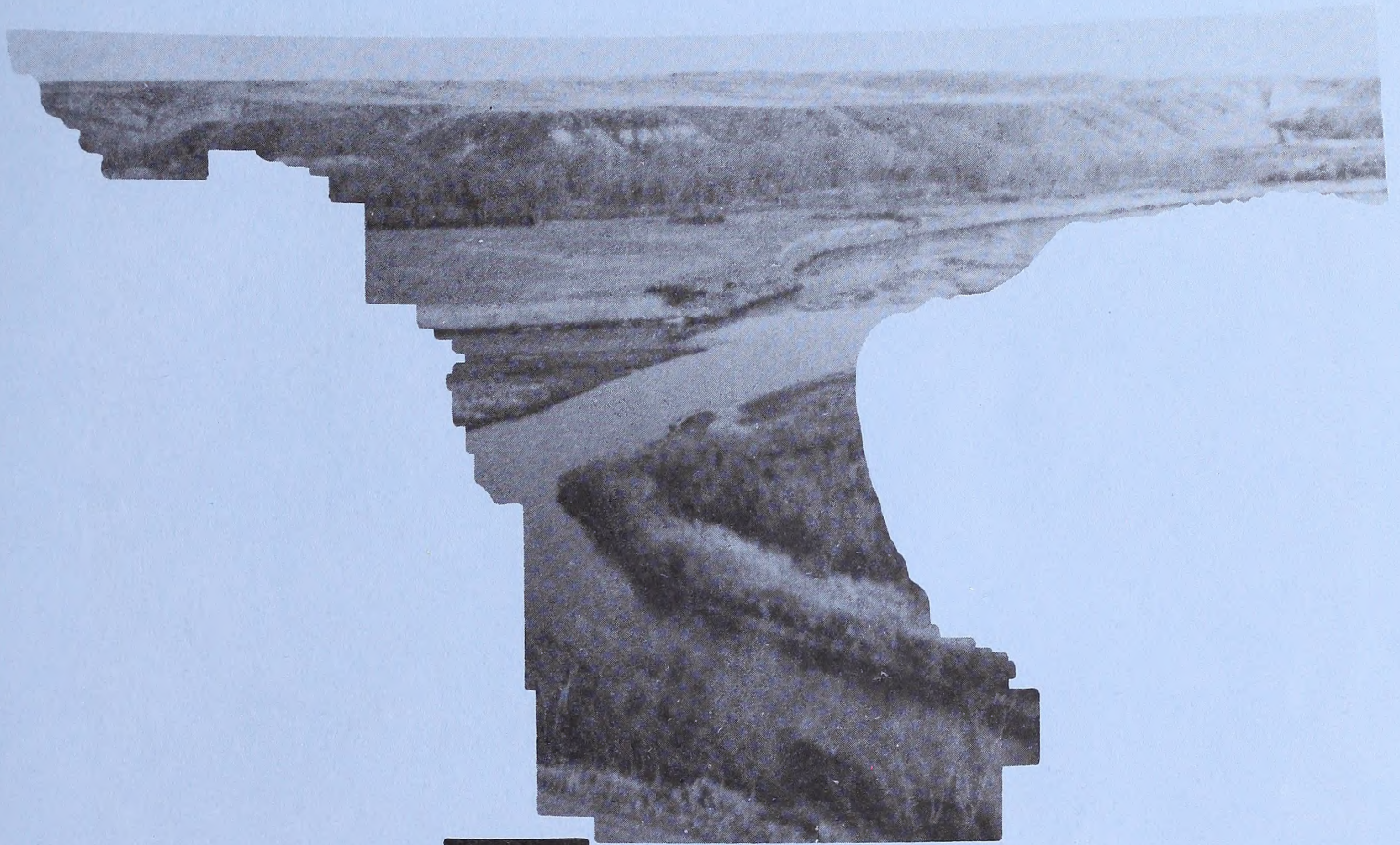
Charles Berdan
Realty Specialist



Dale Tribby
Range Conservationist

Not Pictured: **Albert Sorenson**
Forestry Technician

Lewistown District



LEWISTOWN DISTRICT

Lewistown,
Montana

Phone
538-7461



Pat Eggart
Clerk-Typist

Glenn Freeman
Assistant District Manager

John Fields
District Manager

Billie Lewis
Clerk-Typist

Margaret Clark
Clerk-Typist

Beulah Derr
Clerk-Typist

Sandra Padilla
Mail and File Clerk

Janice Snyder
Clerk-Typist

Margaret Westhoff
Clerk

3,856,673 Surface Acres

8,177,983 Subsurface Acres

Watershed

Range Improvements

Wildlife

Wild and Scenic Missouri River

Youth Programs

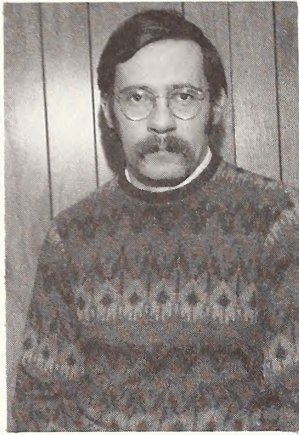
Lewis & Clark Trail

Missouri Breaks Grazing EIS

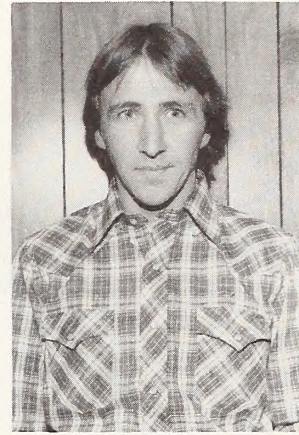
Oil & Gas — Overthrust Belt

Prairie Pothole Grazing EIS

District Manager's Staff



William Bishop
Public Information Specialist



Jeffrey Bass
YACC/Range Conservationist

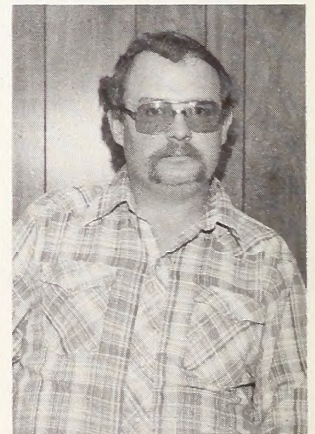
Division of Administration



Roy Oliver
Administrative Officer

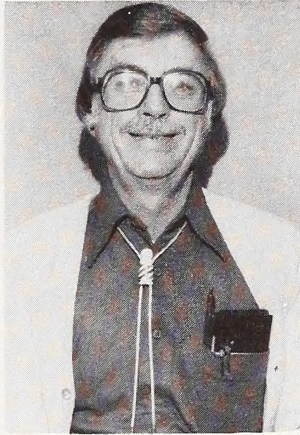


Edith Caywood
Administrative Assistant



John Fleharty
Warehouseman

Division of Operations



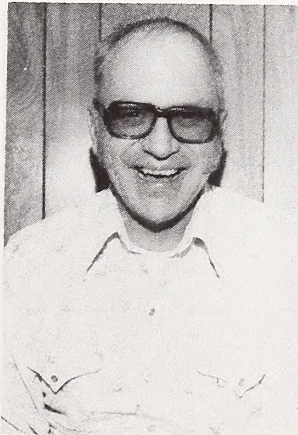
Carl Lind
Chief



Gordon Bueling
Civil Engineer



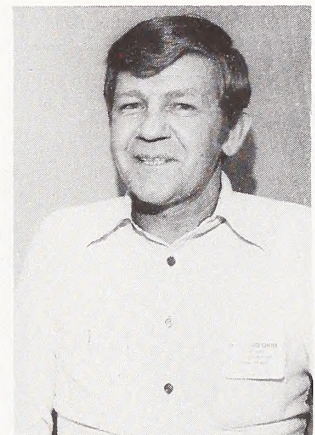
Gary Greenwood
Realty Specialist



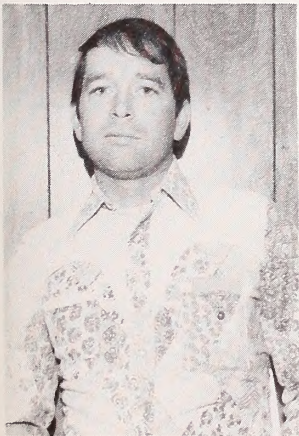
Warren Gestring
Surface Protection Specialist



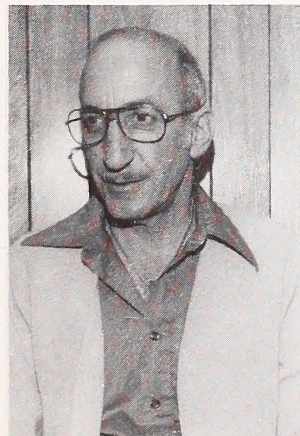
Hedley Arthur
Realty Specialist (ATROW)



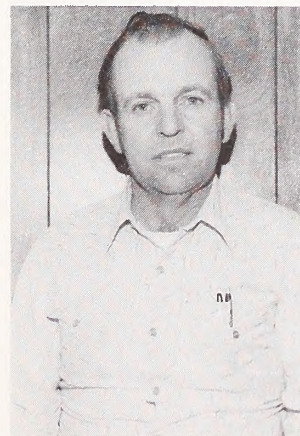
Larry Birdwell
Engineering Technician



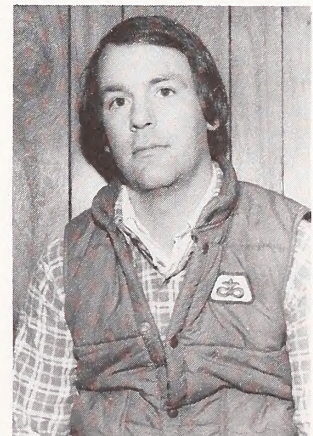
Edwin Bradley
Heavy Equipment Operator



Phillip Perry
Range Technician



Glenn Thompson
Maintenanceman

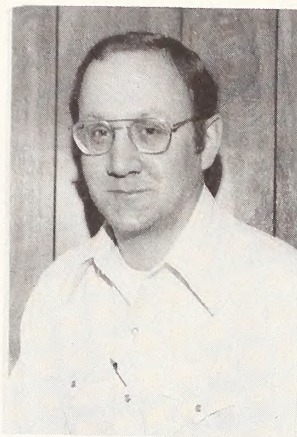


Craig Flentie
Engineering Technician

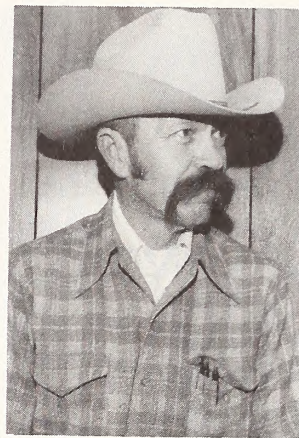
Division of Resources



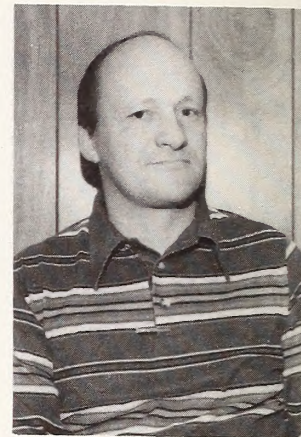
Clair Clark
Soil Scientist



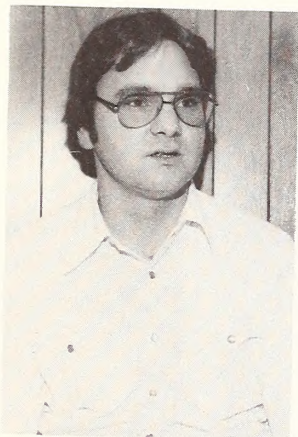
Al Kesterke
Supervisory Natural Resource Specialist



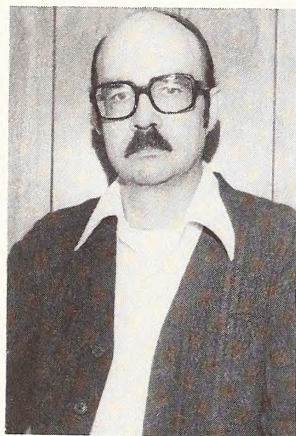
John Harksen
Geologist



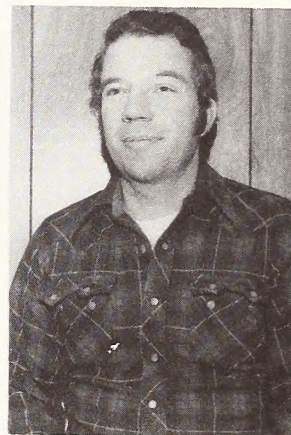
George Ruebelmann
Archeologist



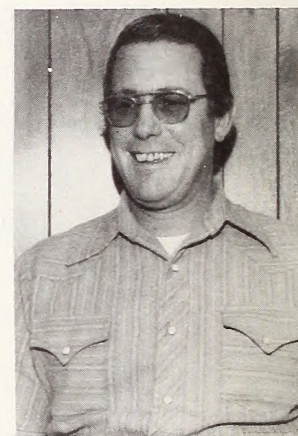
Robert Hale
Realty Specialist



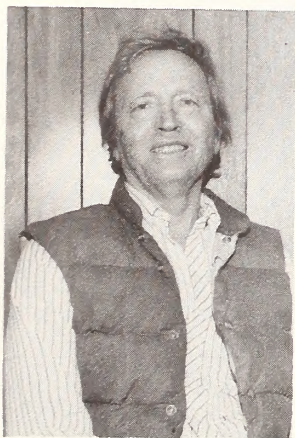
Larry Eichhorn
Wildlife Management Biologist



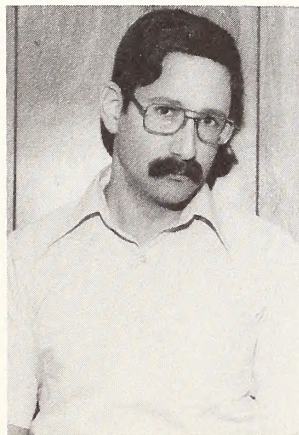
John Nesselhuff
Forester



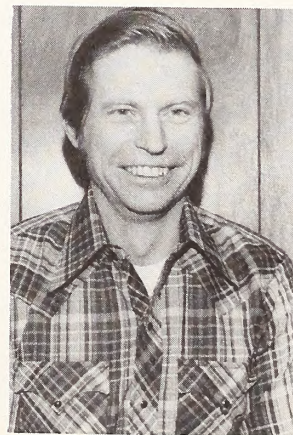
Chanler Biggs
Outdoor Recreation Planner



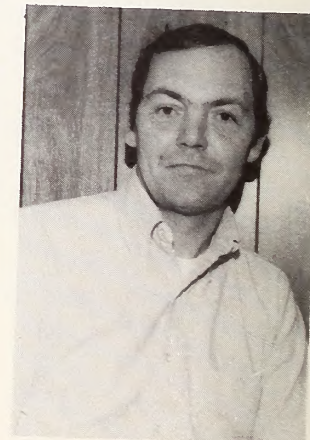
Leonhard Koerth
Realty Specialist



Jeph Shryer
Wildlife Management Biologist



Duane Ferdinand
Range Conservationist



Jim Barnum
Fisheries Biologist

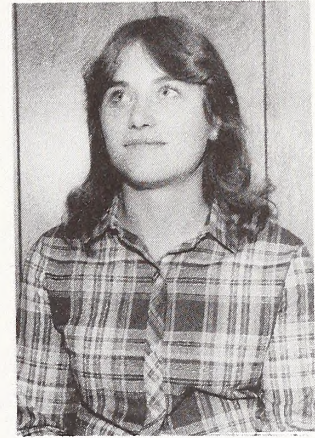
Division of Resources



Tim Burton
Hydrologist



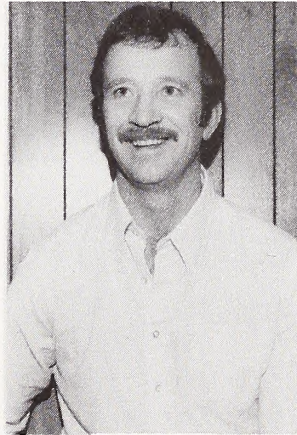
Robert Padilla
Realty specialist



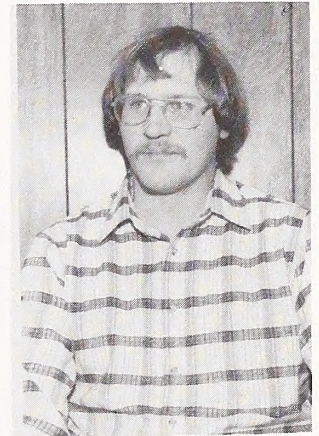
Cyndy Miftac
Resource Conservation Technician



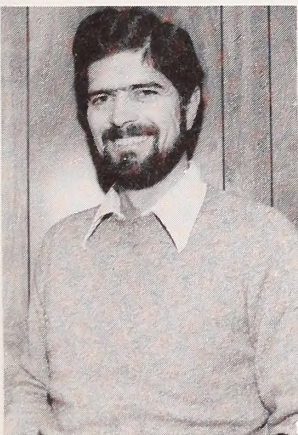
Phillip Gezon
Outdoor Recreation Planner



Gary Beals
Realty Specialist



Gary Pavek
Outdoor Recreation Planner



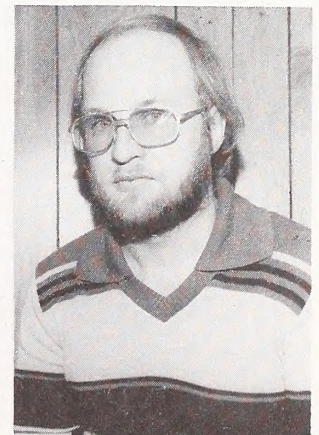
Chuck Godfrey
Outdoor Recreation Planner



Gail Storfa
Realty Aid



Paul Key
Historian



John Fahlgren
Range Conservationist

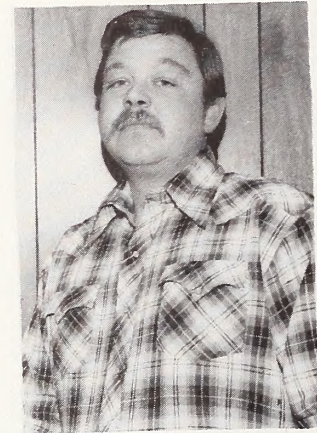
Division of Planning and Environmental Coordination



George Damone
Program Manager



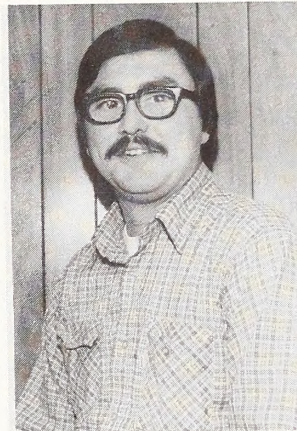
Ed Hastings
Planning Coordinator



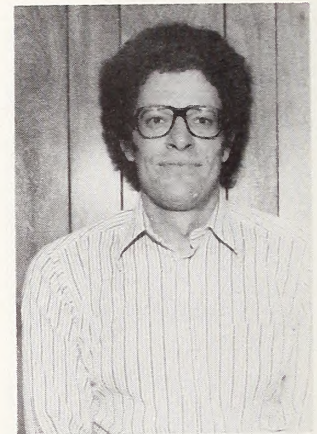
Tad Day
Environmental Specialist



Joan Trent
Sociologist



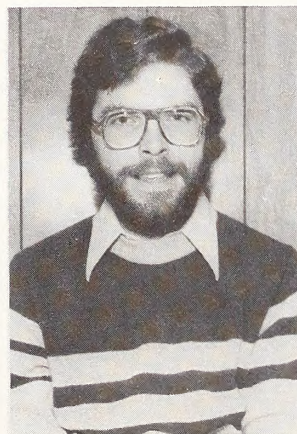
Philip Sandifer
Hydrologist



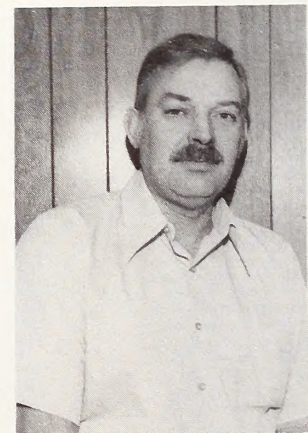
Robert Harris
Writer Editor



Ann Heath
Visual Information Specialist

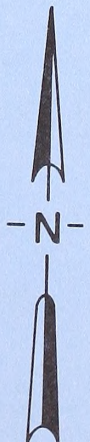
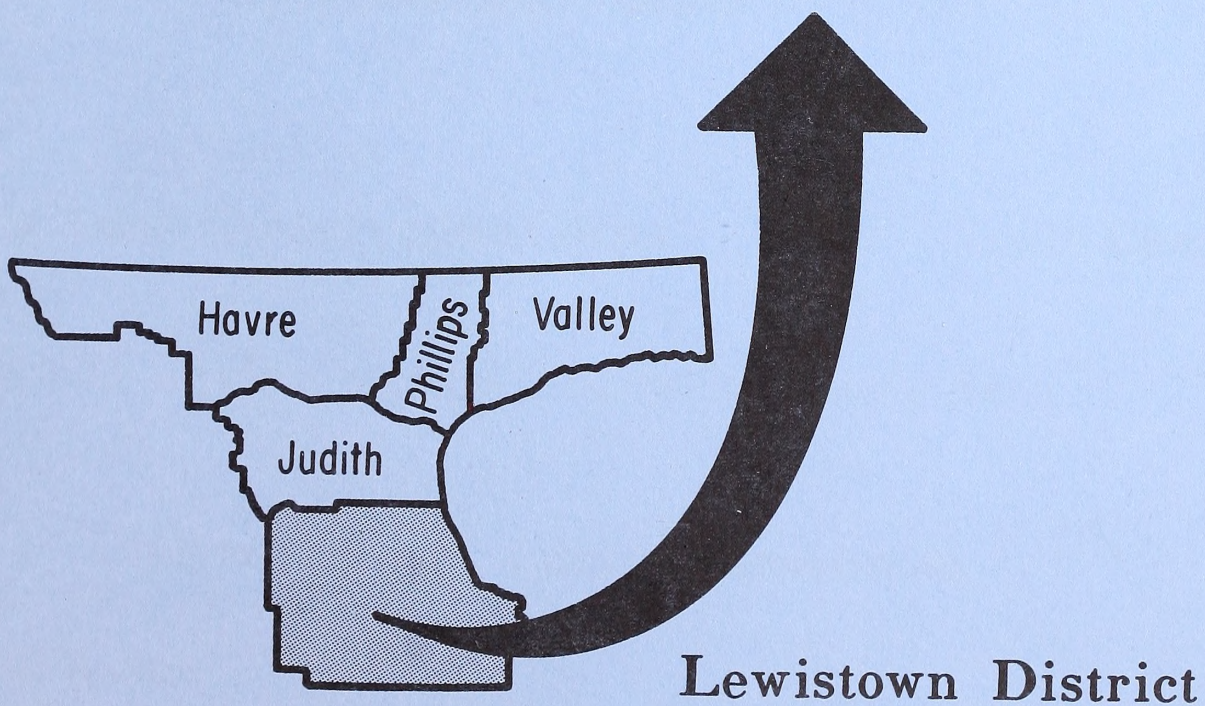


Tod Gates
Student Intern



Lloyd Fusselman
Natural Resource Specialist

Billings Resource Area



Billings Resource Area

Billings,
Montana

Phone
657-6262



Lowell Brown
Supervisory Natural Resource Specialist

Patty Kruger
Clerk-Typist

Young Adult Conservation Corps

Youth Conservation Corps

AH-NEI Environmental Education Study Area

Wildlife

Watershed

Cultural Resources

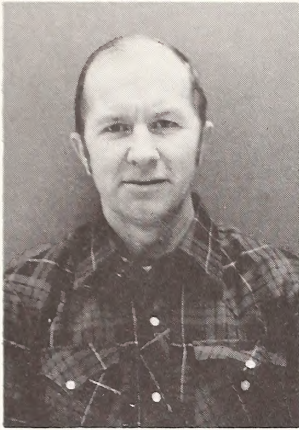
Range

Oil & Gas

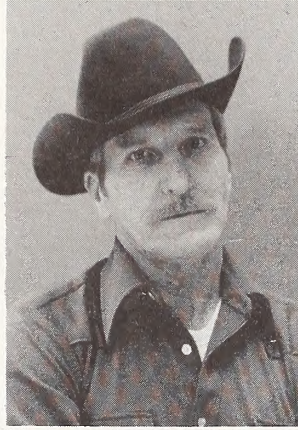
Coal

Pryor Mountain Wild Horse Range

Billings Resource Area Staff



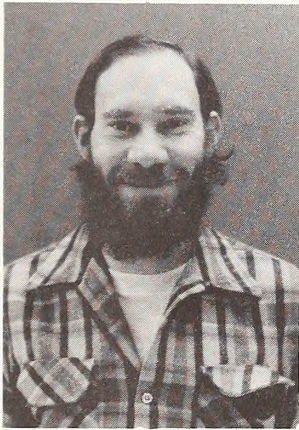
Wilton Peterson
Supervisory Range Conservationist



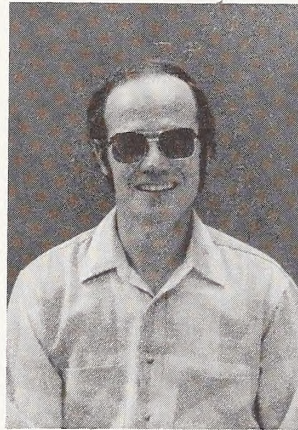
Mickey Obert
Range Technician



Robert Taylor
Range Technician



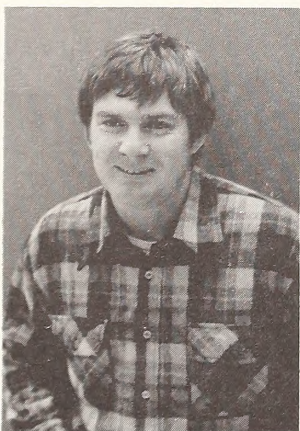
Jay Spielman
Geologist



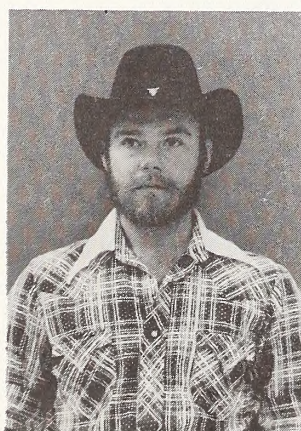
Keith Mosbaugh
Outdoor Recreation Planner



Teri Nessen
Range Technician



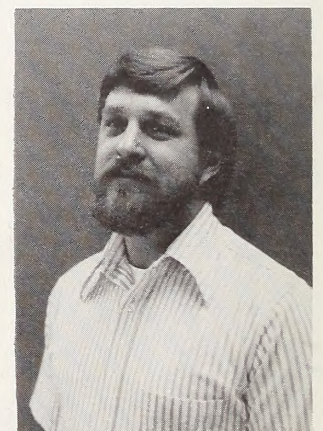
Karl Hedrick
Range Conservationist



Steve Seth
Wildlife Management Biologist

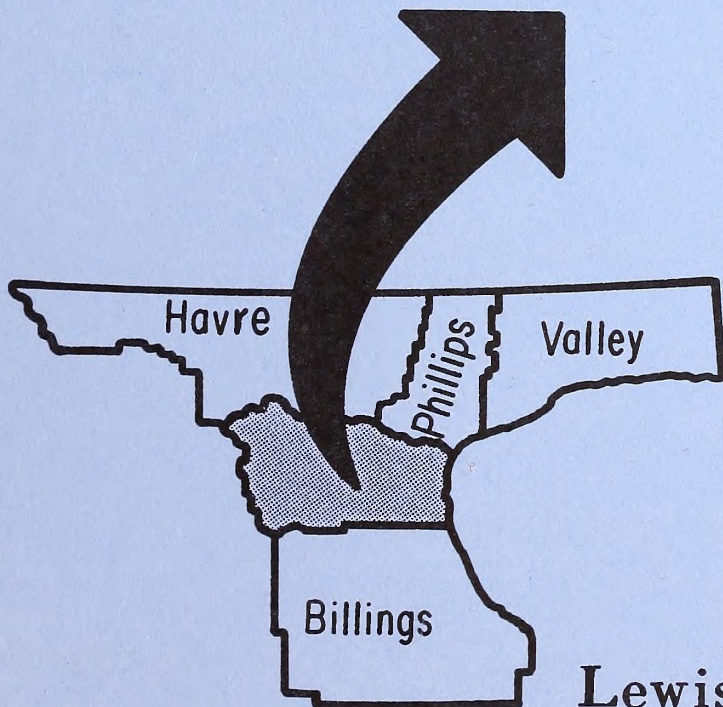


Nancy Seale
Realty Technician

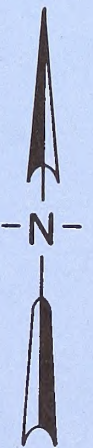


Raymond Altop
Wildlife Management Biologist

Judith Resource Area



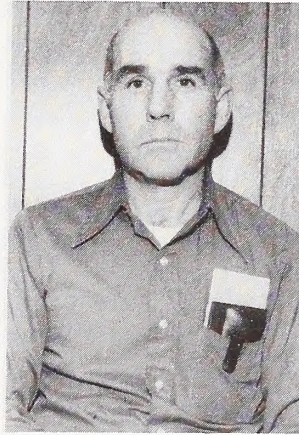
Lewistown District



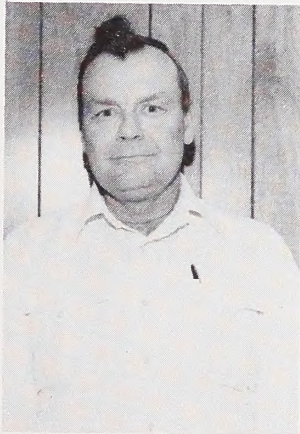
Judith Resource Area

Lewistown,
Montana

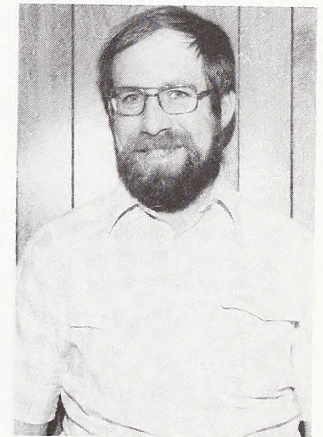
Phone
538-7461



William Cutler
Natural Resource Manager



Ron Jorgenson
Supervisory Range Conservationist



Tom Maxwell
Natural Resource specialist

Wild & Scenic Missouri River

Timber

Range Improvements

Missouri Breaks Grazing EIS

Lewis & Clark Trail

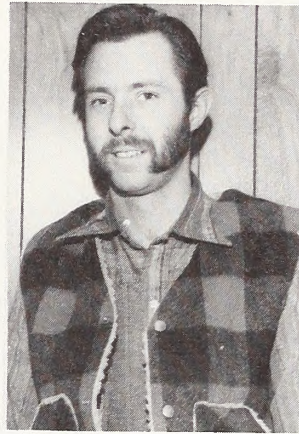
Youth Adult Conservation Corps

Square Butte Natural Area

Judith Resource Area Staff



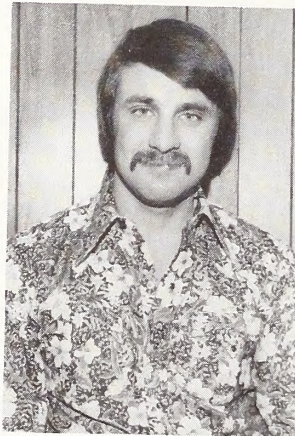
Orien Grover
Range Conservationist



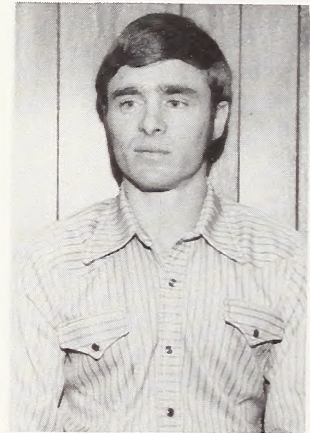
Chris Jauert
Natural Resource Specialist



Clark Whitehead
Outdoor Recreation Planner



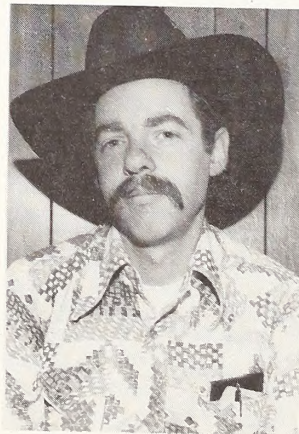
Terry Holst
Range Conservationist



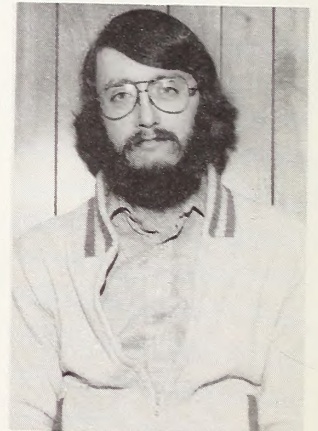
Lloyd Bantz
Range Technician



Glenn Hadden
Wildlife Management Biologist



Mike Gilkerson
Range Technician

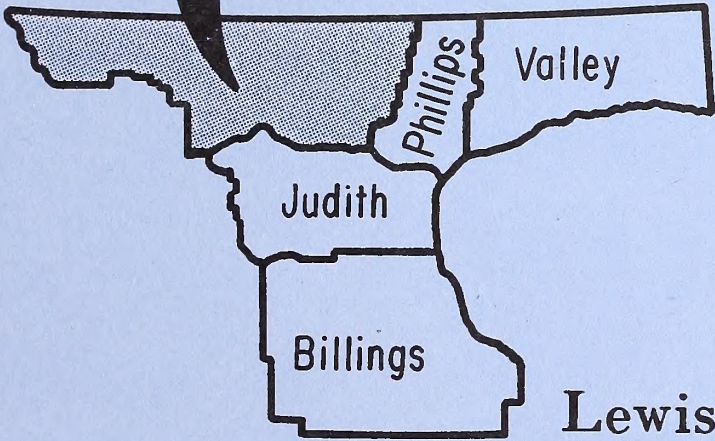


John Taylor
Archeologist

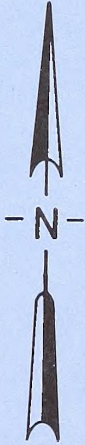
Not Pictured: **Doug Ayers**
Wildlife Management Biologist

Alan Minkoff
Range Technician

Havre Resource Area



Lewistown District



Havre Resource Area

Havre,
Montana

Phone
265-5891



Don Ryan
Natural Resource Manager

Laura Freyholst
Clerk-Typist

Jeanne Sullivan
Area Clerk

Patty Moog
YACC Clerk

Wild & Scenic Missouri River

Missouri Breaks Grazing EIS

Prairie Pothole Grazing EIS

Nez Perce Trail

Range Improvements

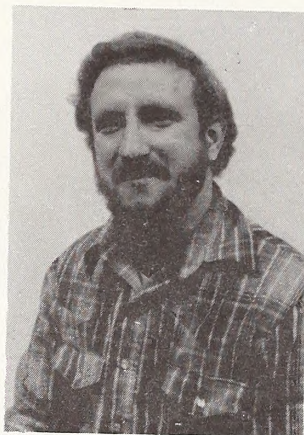
Oil & Gas — Overthrust Belt

Young Adult Conservation Corps

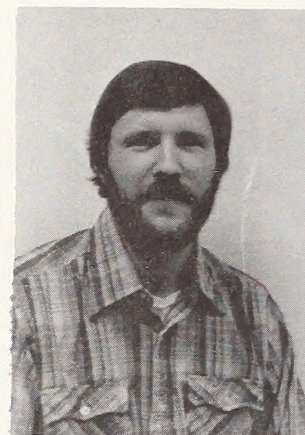
Havre Resource Area Staff



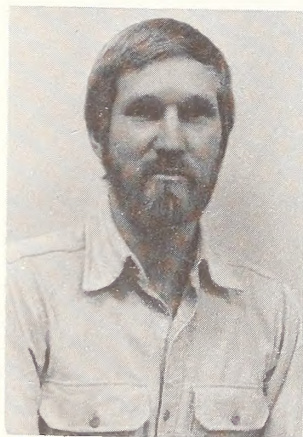
Wallace Elliott
Supervisory Range Conservationist



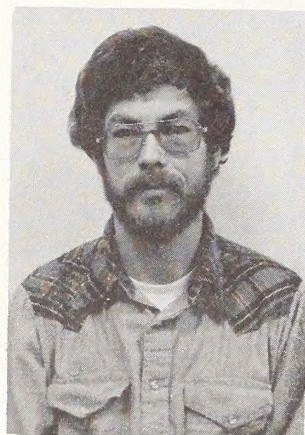
James Eldridge
Realty Specialist



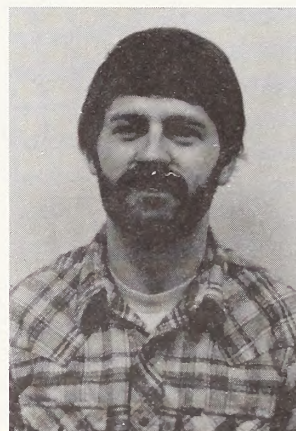
Chris Hoff
Wildlife Management Biologist



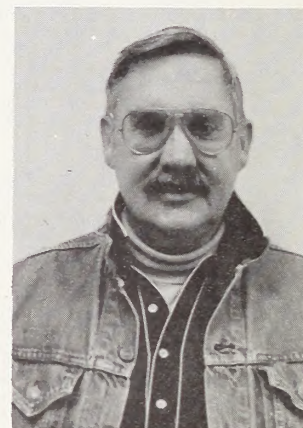
Steve Gniadnek
Wildlife Management Biologist



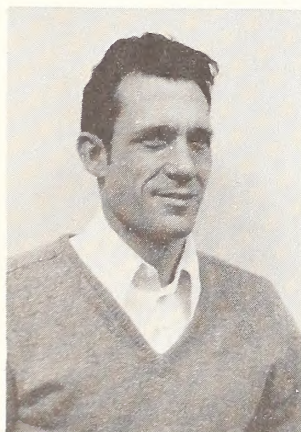
Paul Brink
Outdoor Recreation Planner



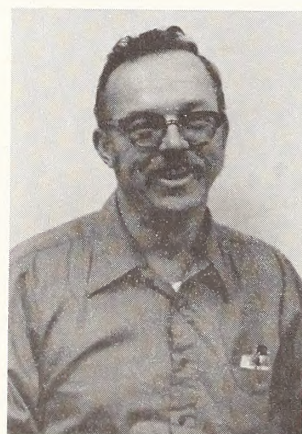
Lee Walsh
Engineer Technician



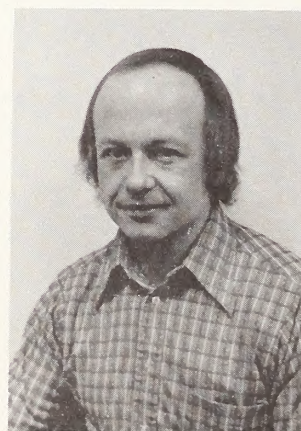
Jack Thiel
Range Conservationist



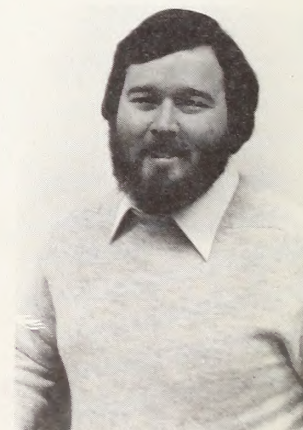
Harold Vosen
Range Conservationist



Roy Lembke
Natural Resource Specialist

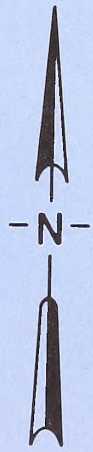
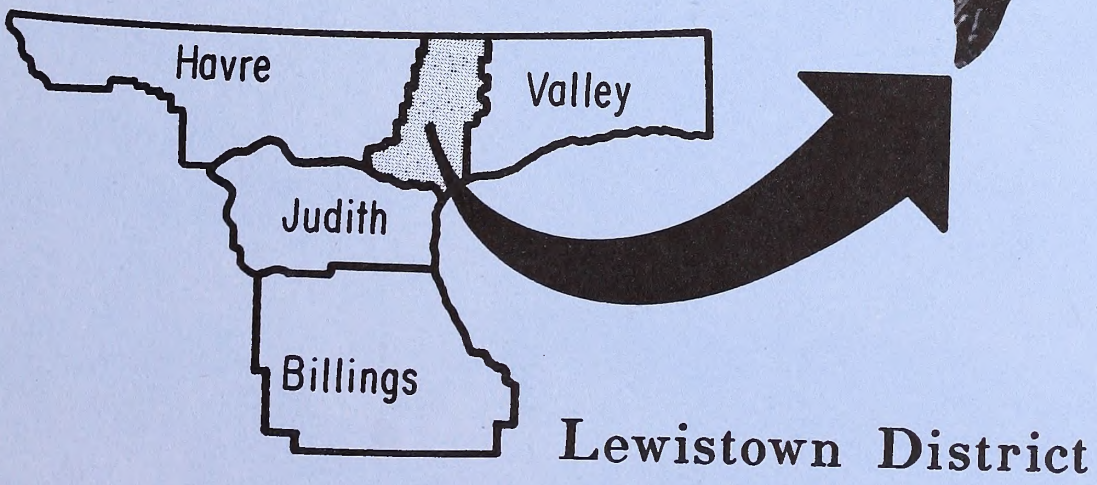
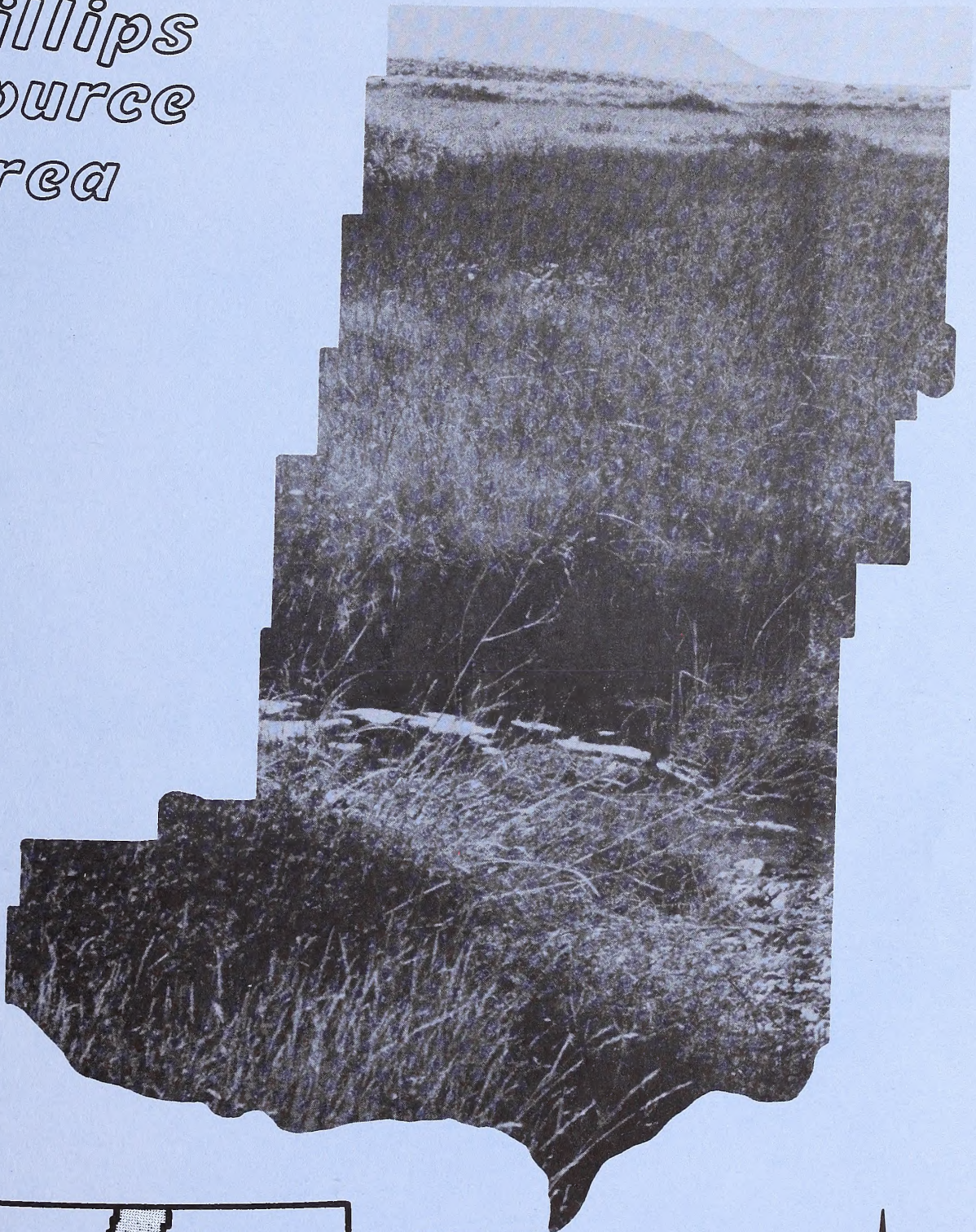


Richard Hubbard
Range Conservationist



Daniel Tippy
Soil Scientist

Phillips Resource Area



Phillips Resource Area

Malta,
Montana

Phone
654-1240



Bonnie Wierderick
Clerk-Typist

Janet Baeth
Clerk-Typist

Shirley Legg
Clerk

Charles Dahlen
Natural Resource Manager

Missouri Breaks Grazing EIS

Bentonite

Range Improvements

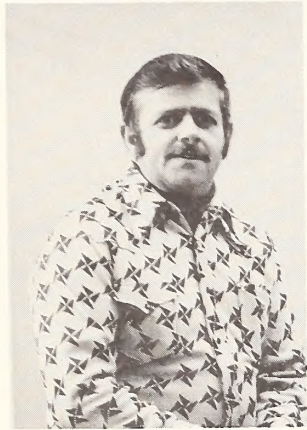
Prairie Pothole Grazing EIS

Wild & Scenic Missouri River

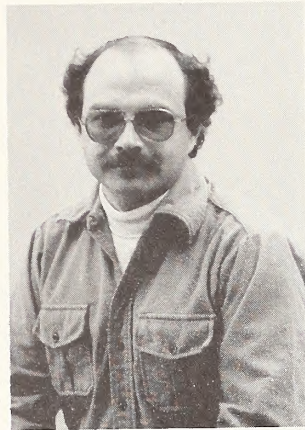
Young Adult Conservation Corps

**Little
Rockies**

Phillips Resource Area Staff



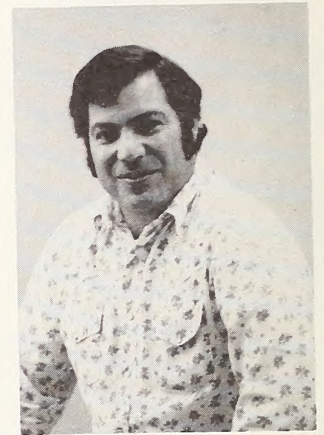
Ron Soiseth
Supervisory Range Conservationist



Ralph Kuhns, Jr.
Geologist



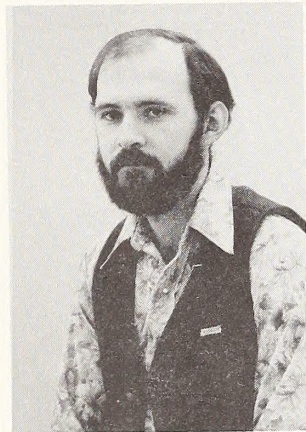
Roy Taylor
Range Conservationist



Paul Martin II
Outdoor Recreation Planner



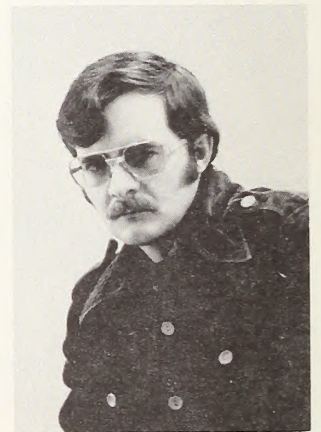
John Grensten
Wildlife Management Biologist



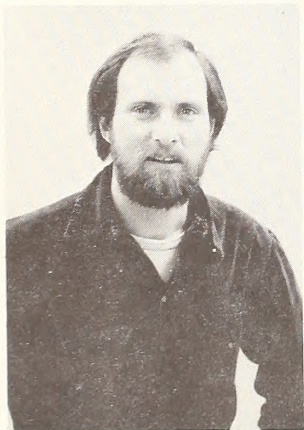
Jerry Pierce
Range Conservationist



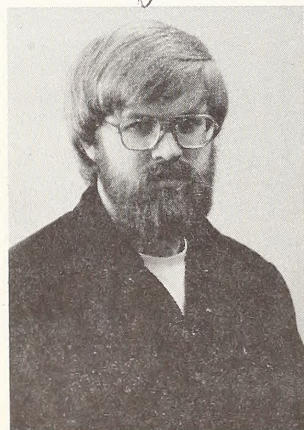
Will Hauck
Natural Resource Specialist



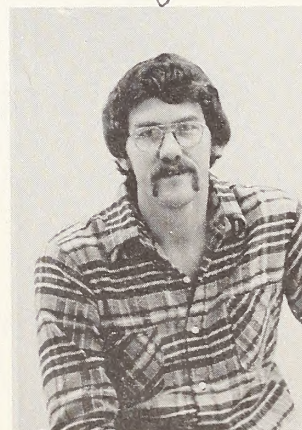
Dennis Lingohr
Range Conservationist



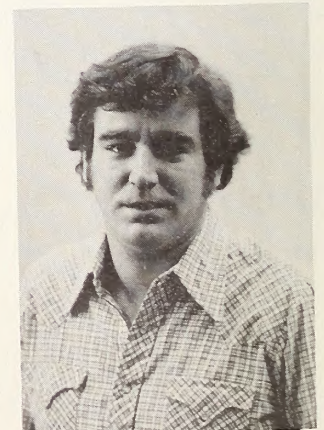
Larry Rau
Range Conservationist



Doug Stockdale
Range Conservationist

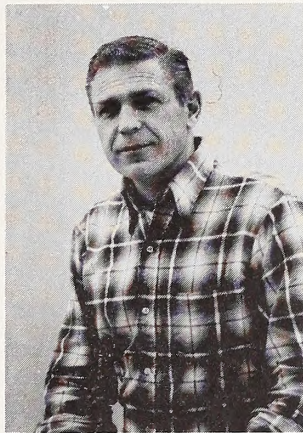


Jeffrey Dose
Fisheries Biologist

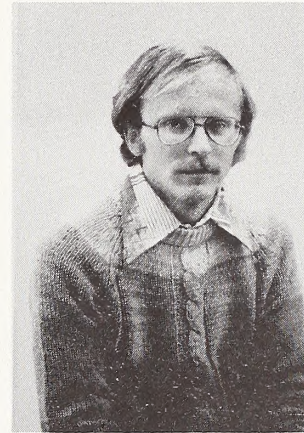


William Hubbell
Archelologist

Phillips Resource Area Staff



Richard DeVries
Realty Specialist



Dwain Prellwitz
Wildlife Management Biologist

Lewistown District Operations Staff, Malta



Don Buffington
Engineering Technician



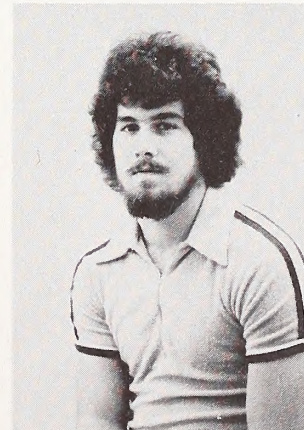
Clifford Mans
Equipment Operator



Henry Ulrich
Civil Engineer Technician

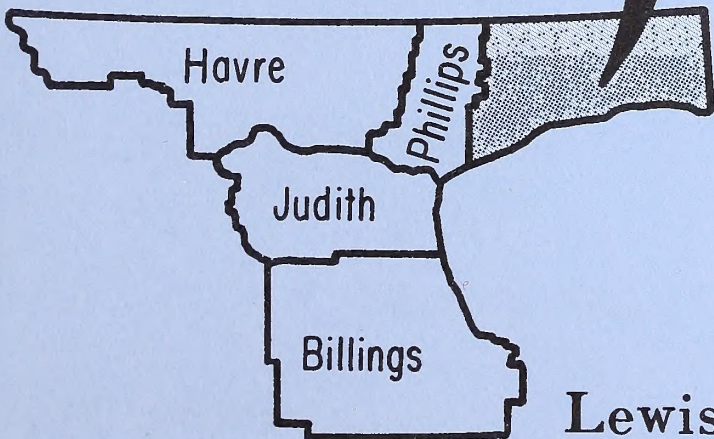


Jack Millar
Civil Engineer Technician

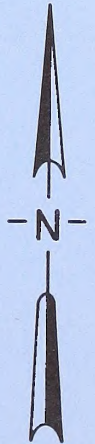


Rob Darrah
Survey Aid

Valley Resource Area



Lewistown District



Valley Resource Area

Glasgow,
Montana

Phone
228-4316



Susan Isakson
Cartographic Aide

Gary Gerth
Natural Resource Manager

Candace Sudduth
Clerk-Typist

Darlene Ramsbacker
Clerk-Typist

Deby Arneson
YACC Clerk

Prairie Pothole Grazing EIS

Missouri Breaks Grazing EIS

Young Adult Conservation Corps

Range Improvements

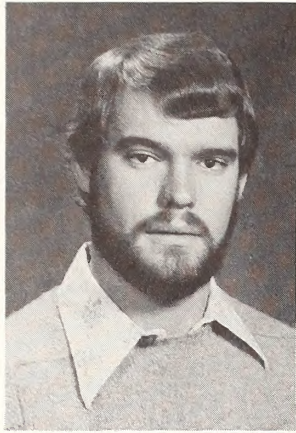
Erosion Control

Bentonite

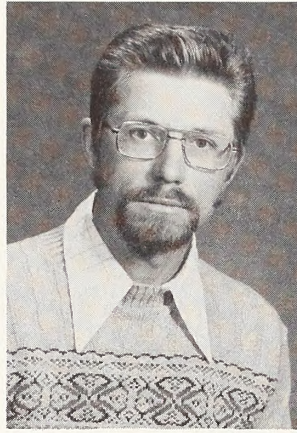
**Northern
Border
Pipeline**

Willow Creek

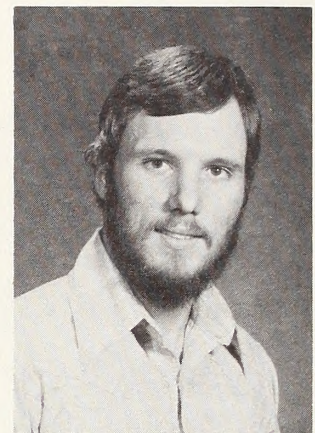
Valley Resource Area Staff



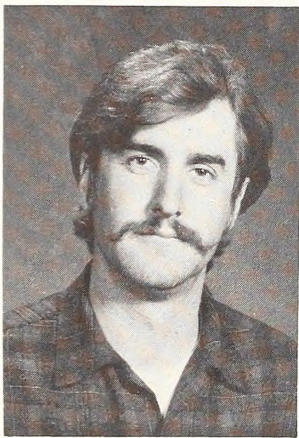
Bud Cribley
Range Conservationist



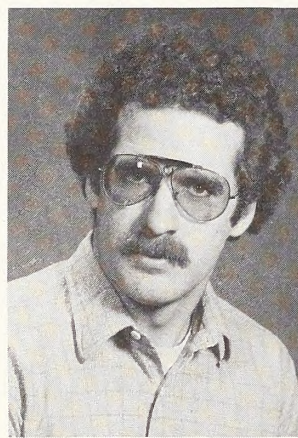
Terrance Wilson
Supervisory Range Conservationist



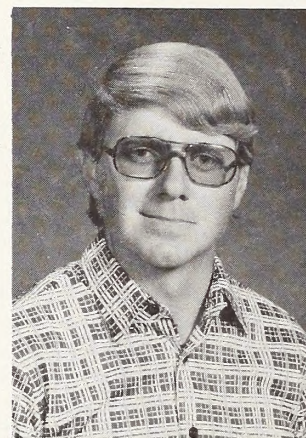
Craig Nemeth
Range Conservationist



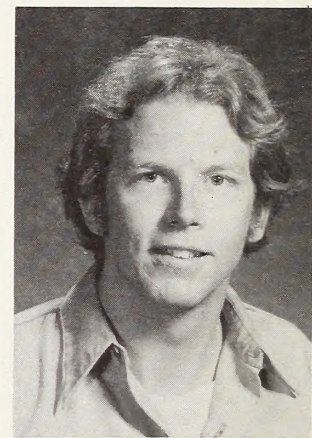
Mike Fisher
Wildlife Management Biologist



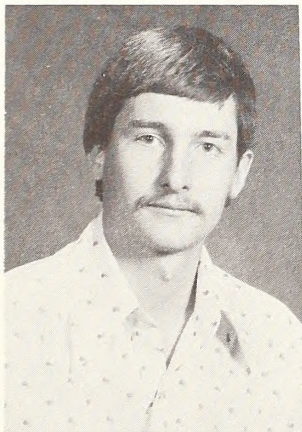
Thomas Clayson
Range Technician



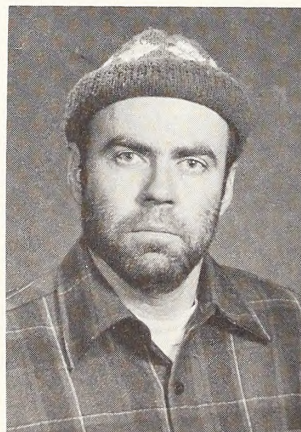
Tim Sorenson
Engineer Technician



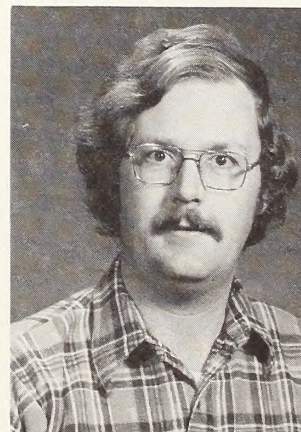
Daniel Muller
Hydrologist



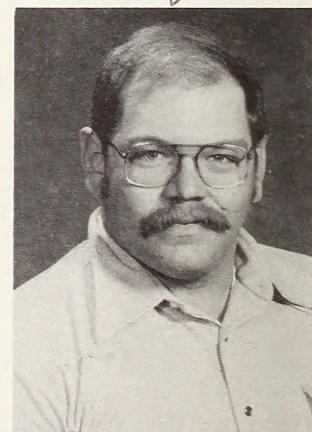
Stephen Klessens
Range Conservationist



Milo Jenkins
Outdoor Recreation Planner

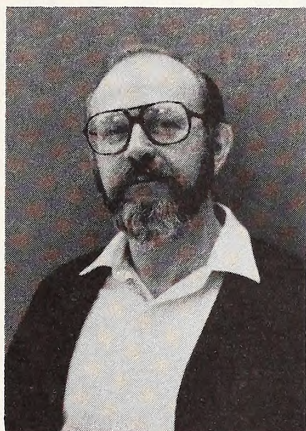


Charles Pregler
Wildlife Management Biologist

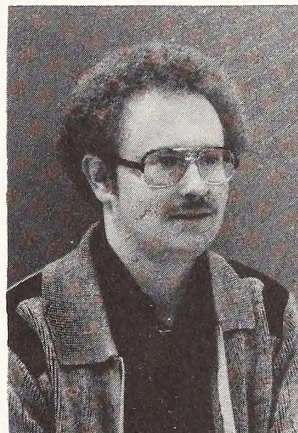


Steve Shuck
Realty Specialist

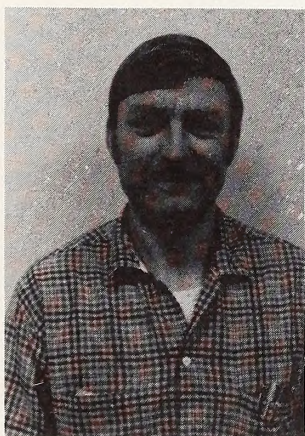
YACC Program



James Wallman
Program Manager



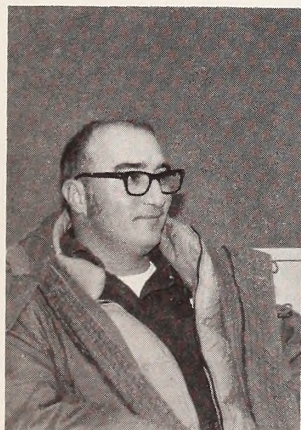
Thomas Brendgord
Administrative Officer



Vaughn Rundquist
Supervisory Range Technician



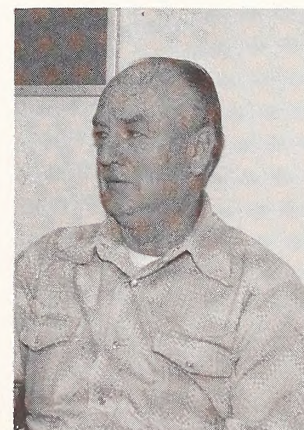
Jim Nafziger
Supervisory Range Technician



Jimmy Ward
Area Work Project Director



Max Vogel
Work Coordinator



Frank Thiebault
Work Coordinator

DIRECTORY

BLM OFFICES IN MONTANA, NORTH AND SOUTH DAKOTA

**Bureau of Land Management
Montana State Office
222 North 32nd Street
P.O. Box 30157
Billings, Montana 59107 Tel. 657-6461**

**Butte District Office
Jack McIntosh, District Manager
P.O. Box 308
Butte, MT 59701**

Telephone: 723-6561

**Dillon Resource Area
Harry Cosgriffe, Area Manager
P.O. Box 1048
Dillon, MT 59725**

Telephone: 683-2337

**Garnet Resource Area
Darrell Sall, Area Manager
P.O. Box 4227
Missoula, MT 59801**

Telephone: 329-3686

**Headwaters Resource Area
Lyle Fox, Area Manager
P.O. Box 308
Butte, MT 59701**

Telephone: 723-6561

**Dickinson District Office
District Manager, Charles Steele
P.O. Box 1229 Pulver Hall
Dickinson, ND 58601**

Telephone: 225-9148

**Miles City District Office
George Neuberg, District Manager
P.O. Box 940
Miles City, MT 59301**

Telephone: 232-4331

**South Dakota Resource Area
Billy McIlvain, Area Manager
310 Roundup St.
Belle Fourche, SD 57717**

Telephone: 892-2526

**Powder River Resource Area
Robert Bennett, Area Manager
P.O. Box 940
Miles City, MT 59301**

Telephone: 232-4331

**Big Dry Resource Area
Don Nelson, Area Manager
P.O. Box 940
Miles City, MT 59301**

Telephone: 232-4331

(Continued)

**Lewistown District Office
John Fields, District Manager
P.O. Drawer 1160
Lewistown, MT 59457**

Telephone: 538-7461

**Valley Resource Area
626 Third Ave., North
Glasgow, MT 59230**

Telephone: 228-4316

**Havre Resource Area
Donald Ryan, Area Manager
Drawer 911
Havre, MT 59501**

Telephone: 265-5891

**Phillips Resource Area
Charles Dahlen, Area Manager
P.O. Box B
Malta, MT 59538**

Telephone: 654-1240

**Billings Resource Area
Bud Brown, Area Manager
801 E. Main St.
Billings, MT 59101**

Telephone: 657-6262

**Judith Resource Area
Bill Cutler, Area Manager
P.O. Drawer 1160
Lewistown, MT 59457**

Telephone: 538-7461

As the Nation's principal conservation agency, the Department of the Interior has responsibility for most of our nationally owned public lands and natural resources. This includes fostering the wisest use of our land and water resources, protecting our fish and wildlife, preserving the environmental and cultural values of our national parks and historical places, and providing for the enjoyment of life through outdoor recreation. The Department assesses our energy and mineral resources and works to assure that their development is in the best interests of all our people. The Department also has a major responsibility for American Indian reservation communities and for people who live in Island Territories under U.S. administration.

