





✓
VIEWS OF

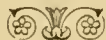
CHICAGO

PHOTOGRAPHS IN BLACK

FROM RECENT NEGATIVES

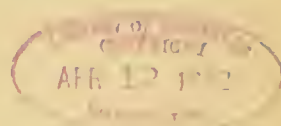
BY

THE ALBERTYPE COMPANY



Copyright, 1889 and 1892, by
✓
A. WITTEMANN,
67 & 69 Spring Street, New York.

7-11



15995-K¹



Masonic Temple

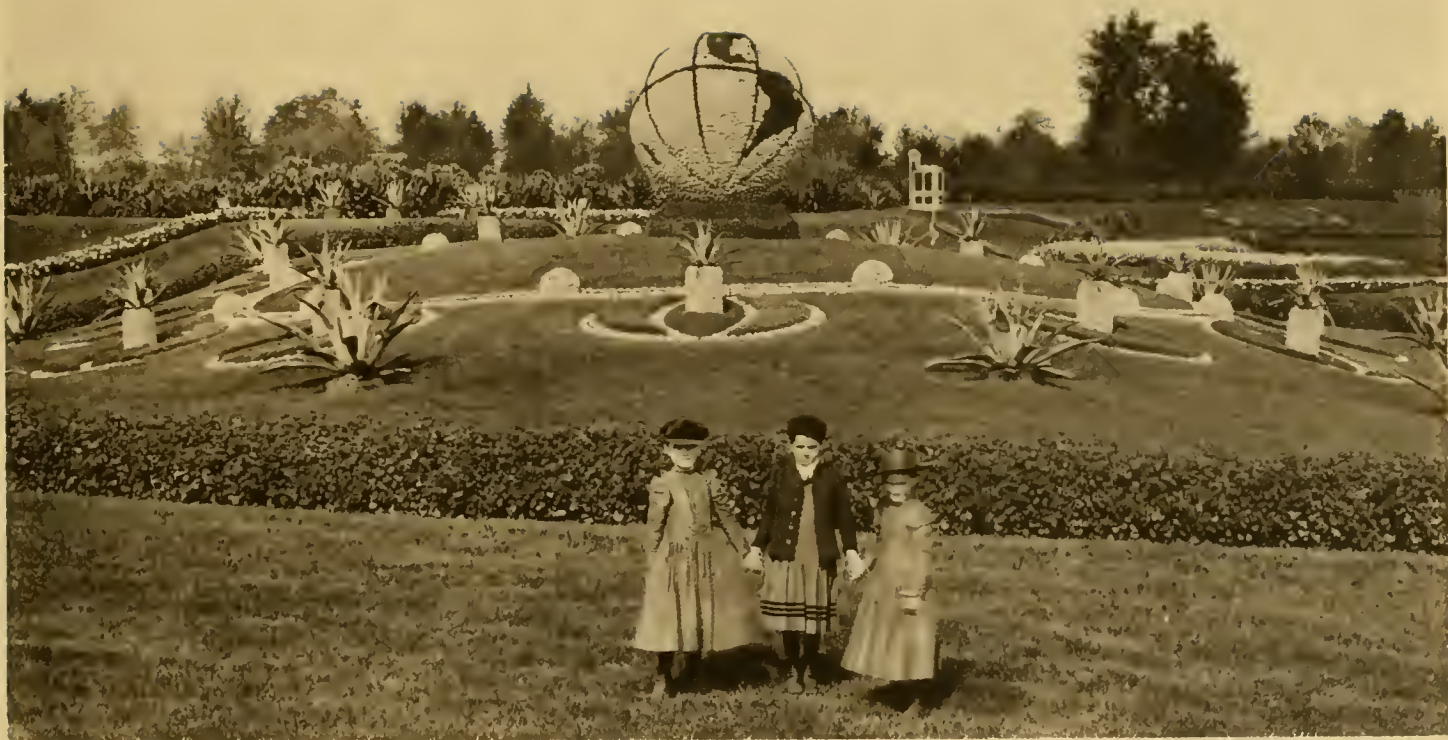
STATE STREET NORTH OF THE PALMER HOUSE



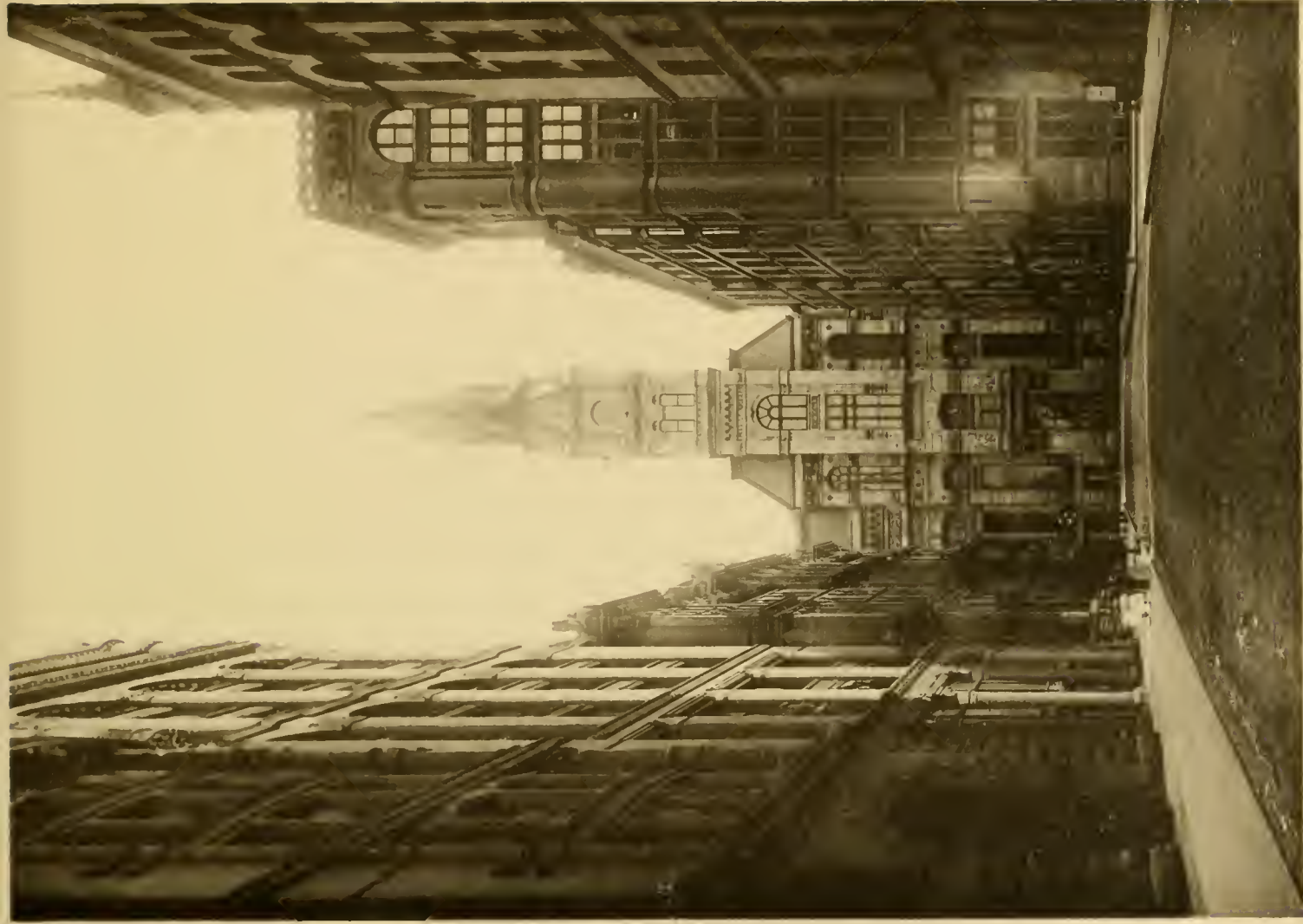
GRANT MONUMENT LINCOLN PARK.



THE AUDITORIUM—Congress Street, Michigan and Wabash Avenues.



WORLD'S FAIR GLOBE Washington Park.



BOARD OF TRADE FOOT OF LA SALLE STREET



LAKE FRONT, opposite Douglas Park.



COURT HOUSE.



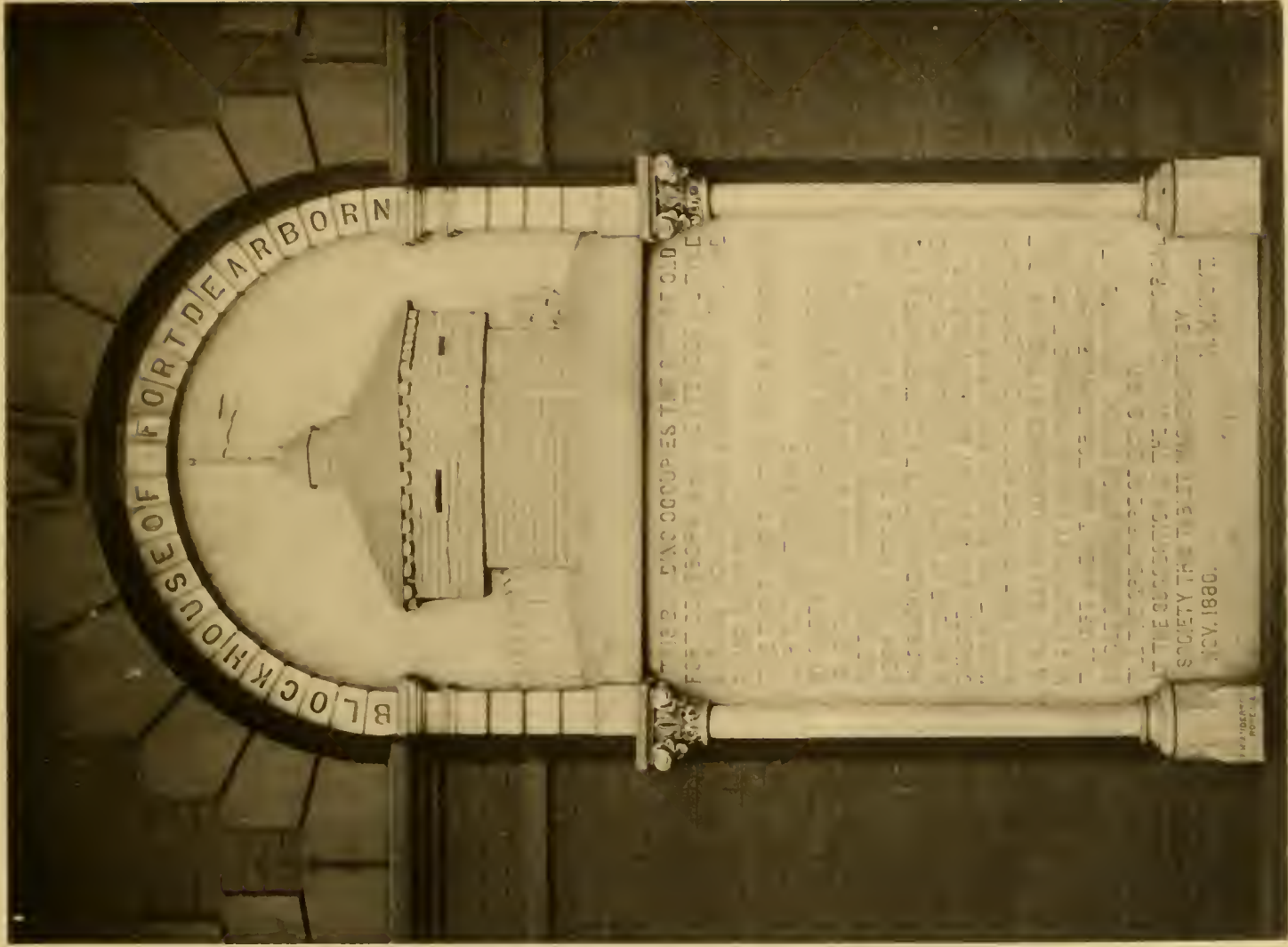
LINCOLN PARK, LA SALLE STATUE



PALMER HOUSE State and Monroe Streets



STATE STREET BRIDGE.



MEMORIAL TABLET OF FORT DEARBORN opposite State Street Bridge.



CHICAGO RIVER, East of State Street Bridge.



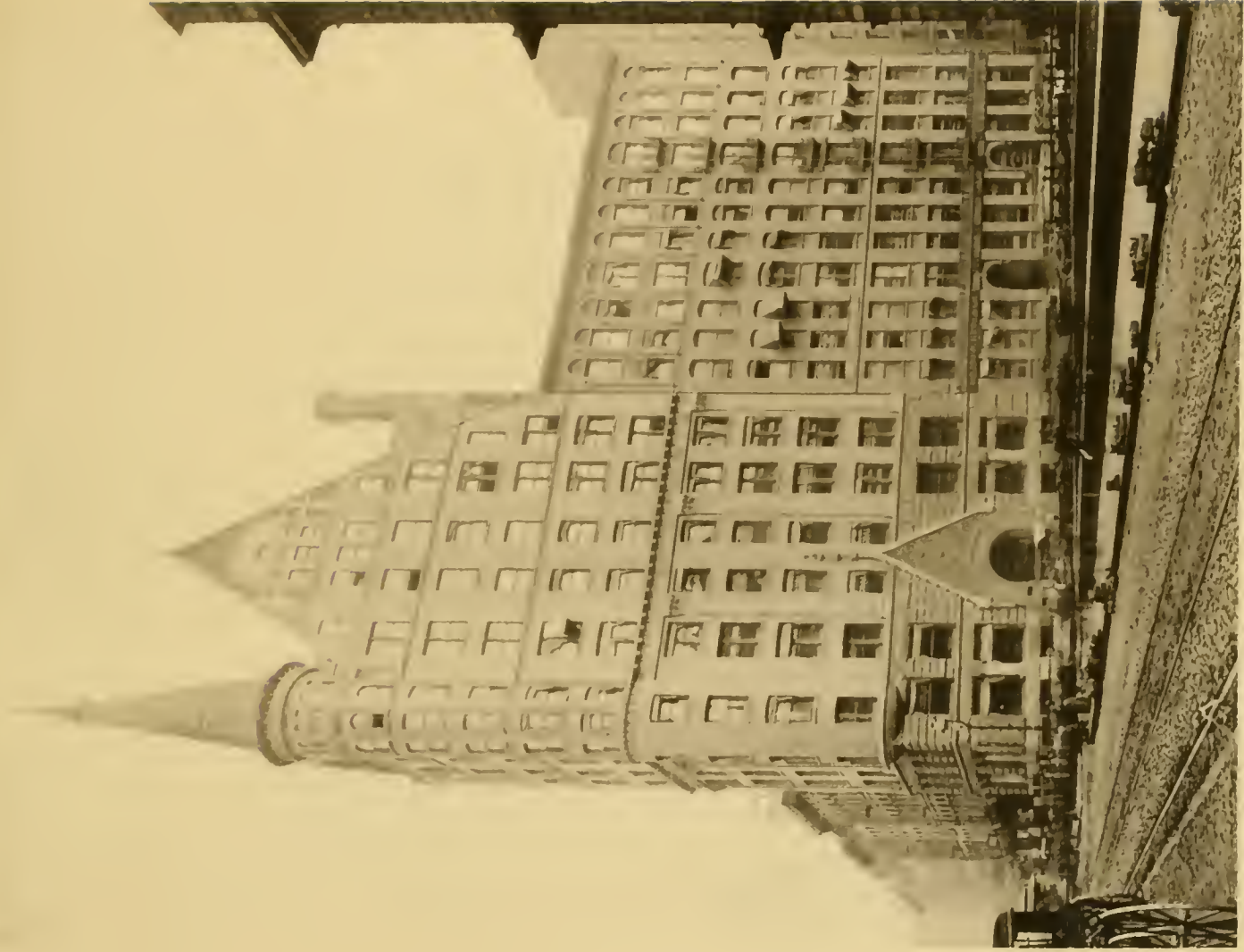
GRAND PACIFIC HOTEL



LINCOLN MONUMENT LINCOLN PARK



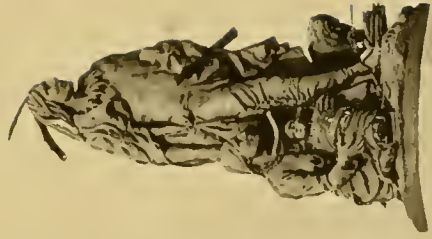
WABASH AVENUE - SOUTH OF MONROE STREET.



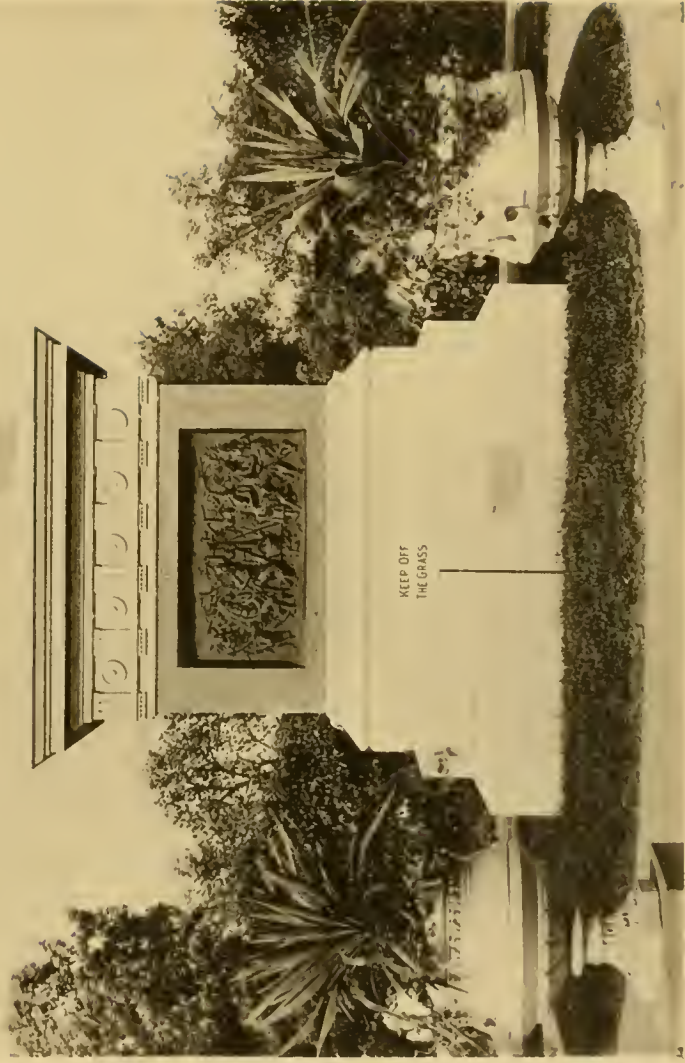
O'WINGS BUILDING AND TEMPLE COURT Cor. Dearborn and Adams Streets



CALUMET CLUB HOUSE Michigan Avenue and 24th Street.



KEEP OFF
THE GRASS



OTTAWA INDIAN MONUMENT—Lincoln Park.



TUG AND VESSEL IN CHICAGO RIVER



MICHIGAN AVENUE AND THE LELAND HOTEL.



BRIDGE IN UNION PARK.



NORTHERN FIREPROOF HOTEL

{ DEARBORN STREET, }
{ South of Jackson Street }

MONADNOCK BUILDING



SCENE IN LINCOLN PARK.



SCHILLER MONUMENT--Lincoln Park.

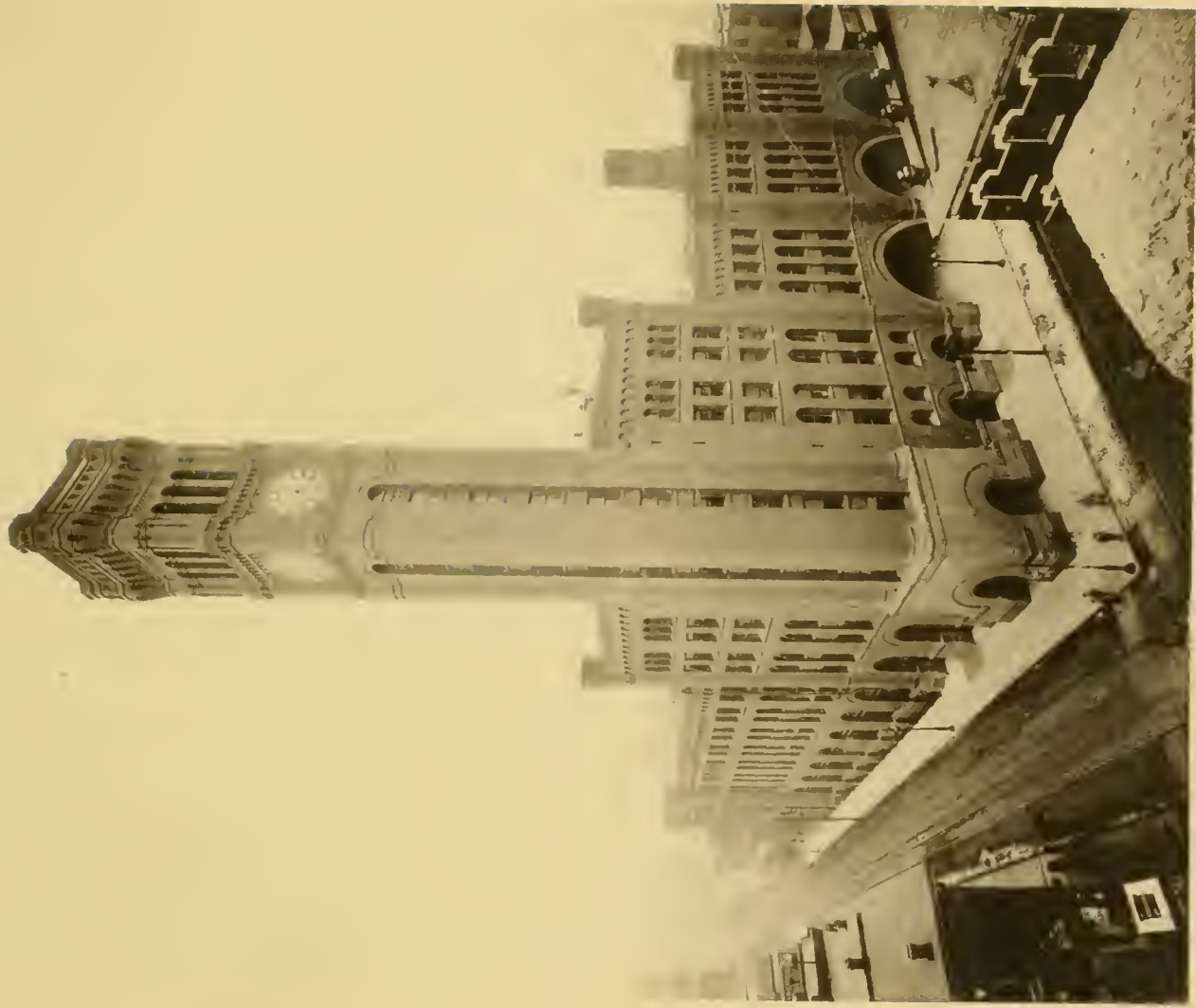


Union Depot

JACKSON STREET BRIDGE AND VIADUCT



ART INSTITUTE Michigan Ave. and Van Buren Street.



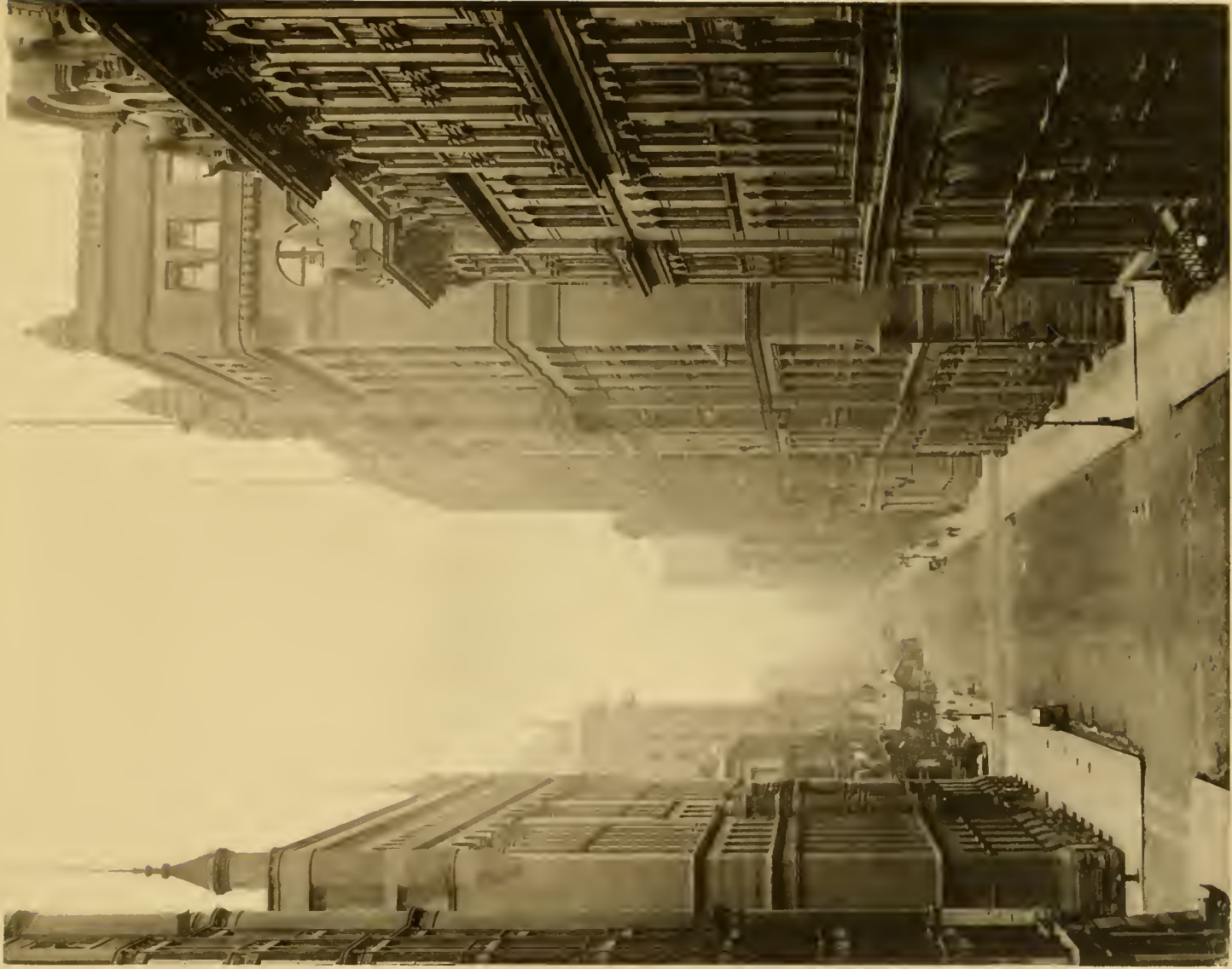
GRAND CENTRAL STATION, (Wisconsin Central R. R.)



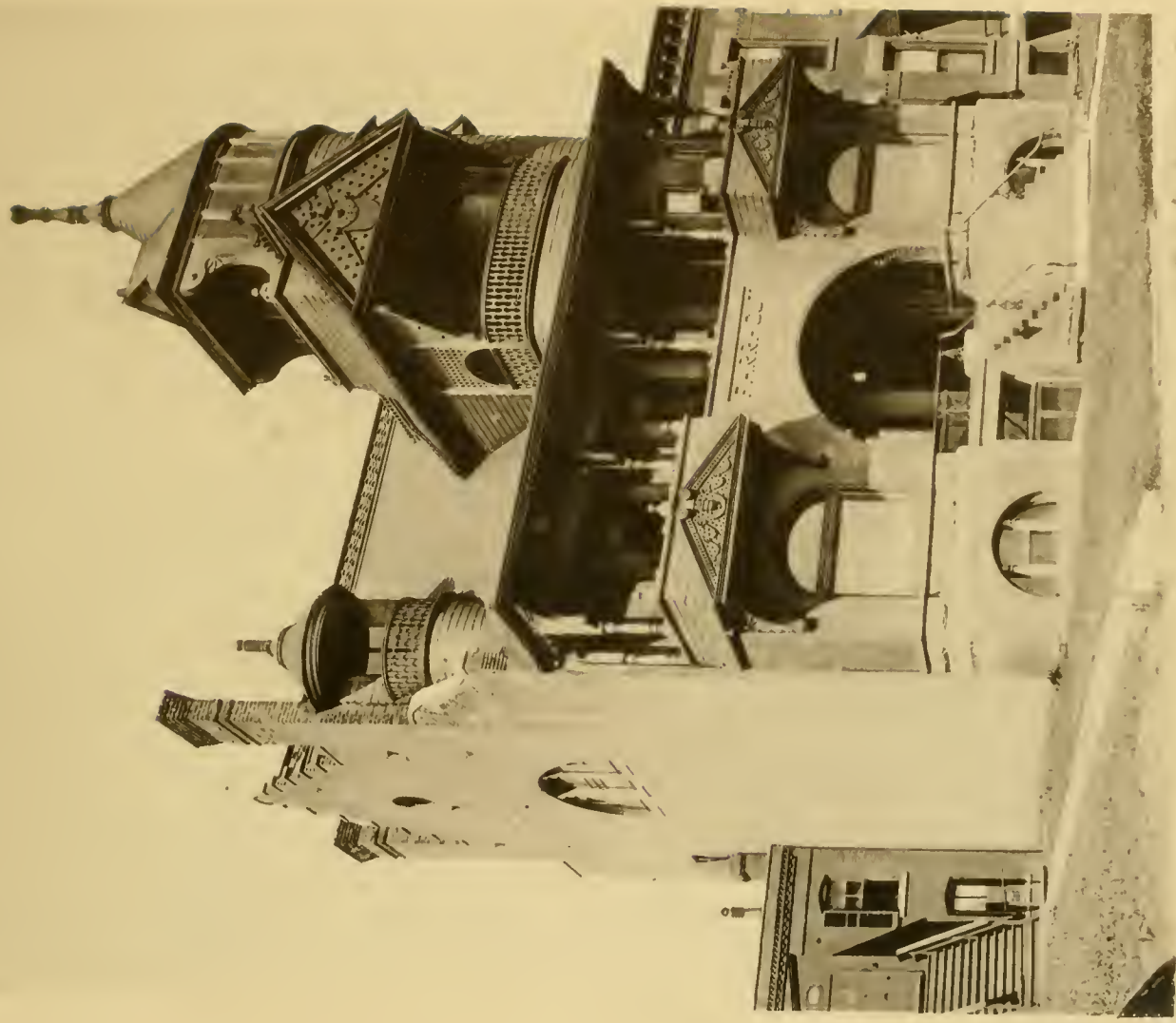
WAITING ROOM OF THE GRAND CENTRAL DEPOT, HARRISON STREET.



MOUTH OF CHICAGO RIVER, from Wells Street Bridge.



LA SALLE STREET, from the Board of Trade.



FARRAGUT BOAT CLUB - Lake Park Ave., near 30th Street



LINCOLN PARK—FLOWER BEDS AND FOUNTAIN.



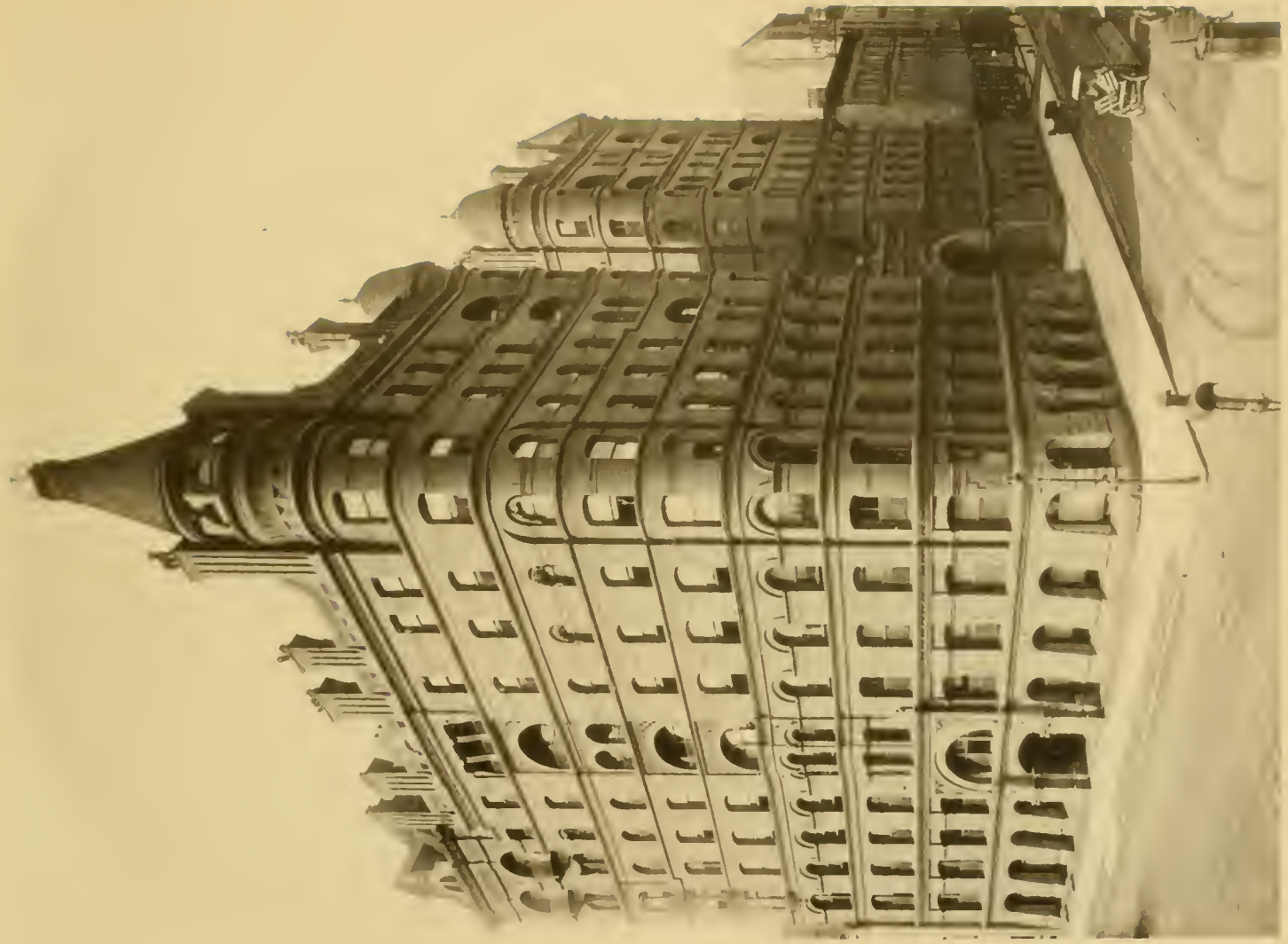
Post Office

Northern Fire Proof Hotel.

Monadnock Bldg.
Union League Club.

Grace Hotel.

JACKSON, FROM CLARK STREET.



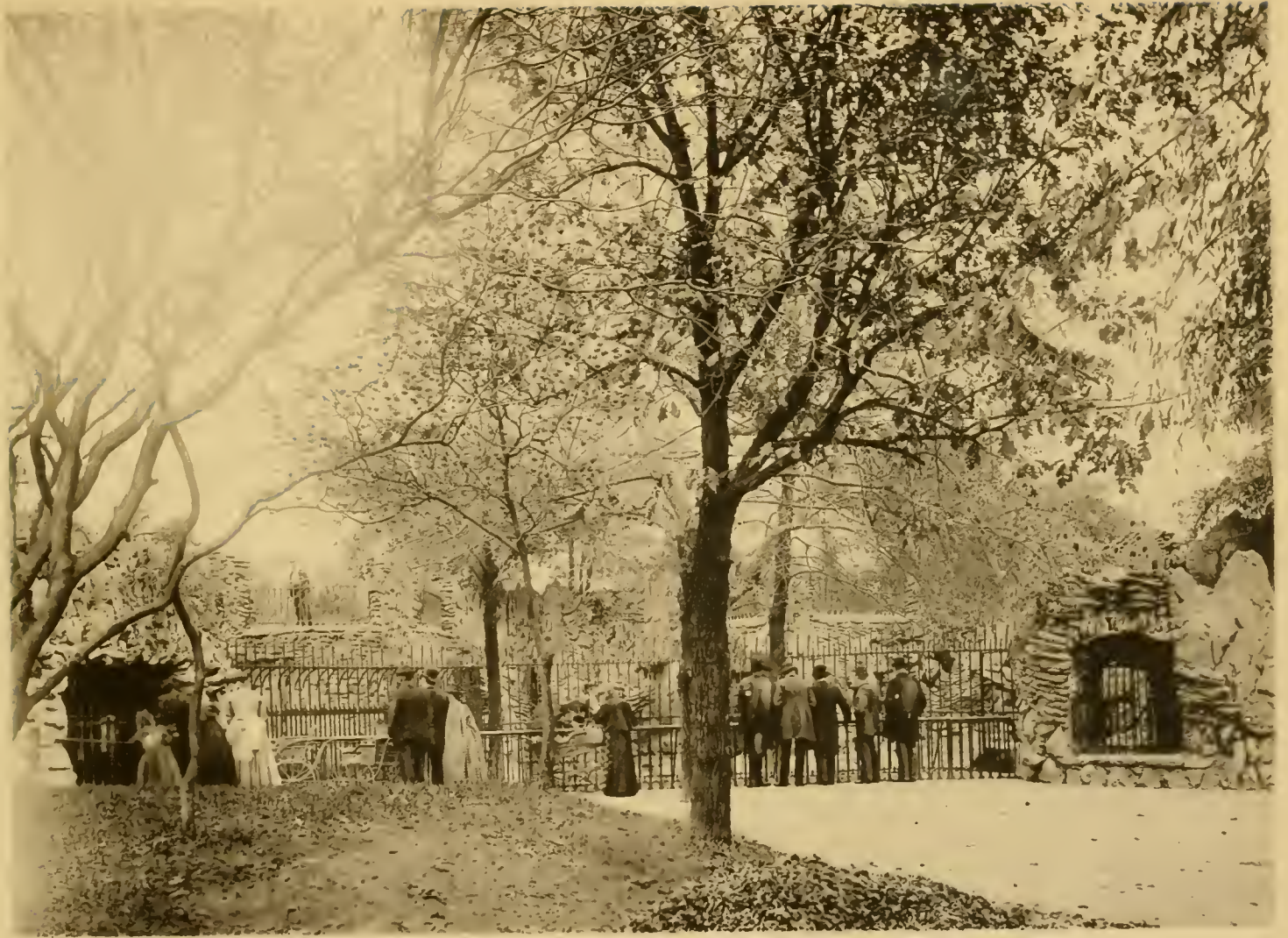
PULLMAN BUILDING Michigan Ave., and Adam's Street



STANDARD CLUB. Michigan Avenue and 24th Street.



LINCOLN PARK—BOAT HOUSE.



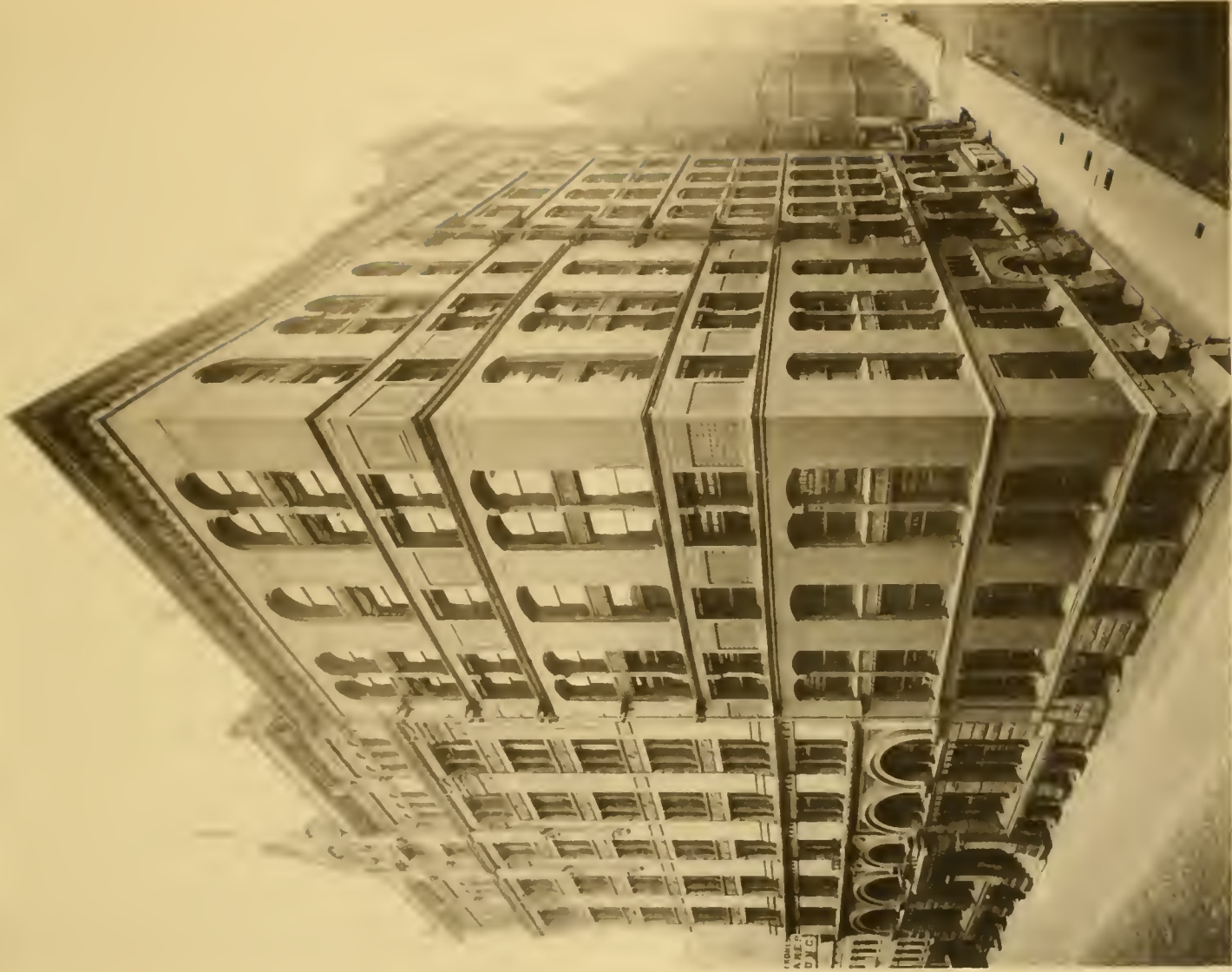
THE BEAR PITS - Lincoln Park.



LILY POND - Lincoln Park



VICTORIA REGIAS—LILY POND—LINCOLN PARK.



Royal Ins. Co.

Courseman, Gaff & Maller Bldgs. Phoenix Ins. Co

JACKSON AND LA SALLE STREETS.



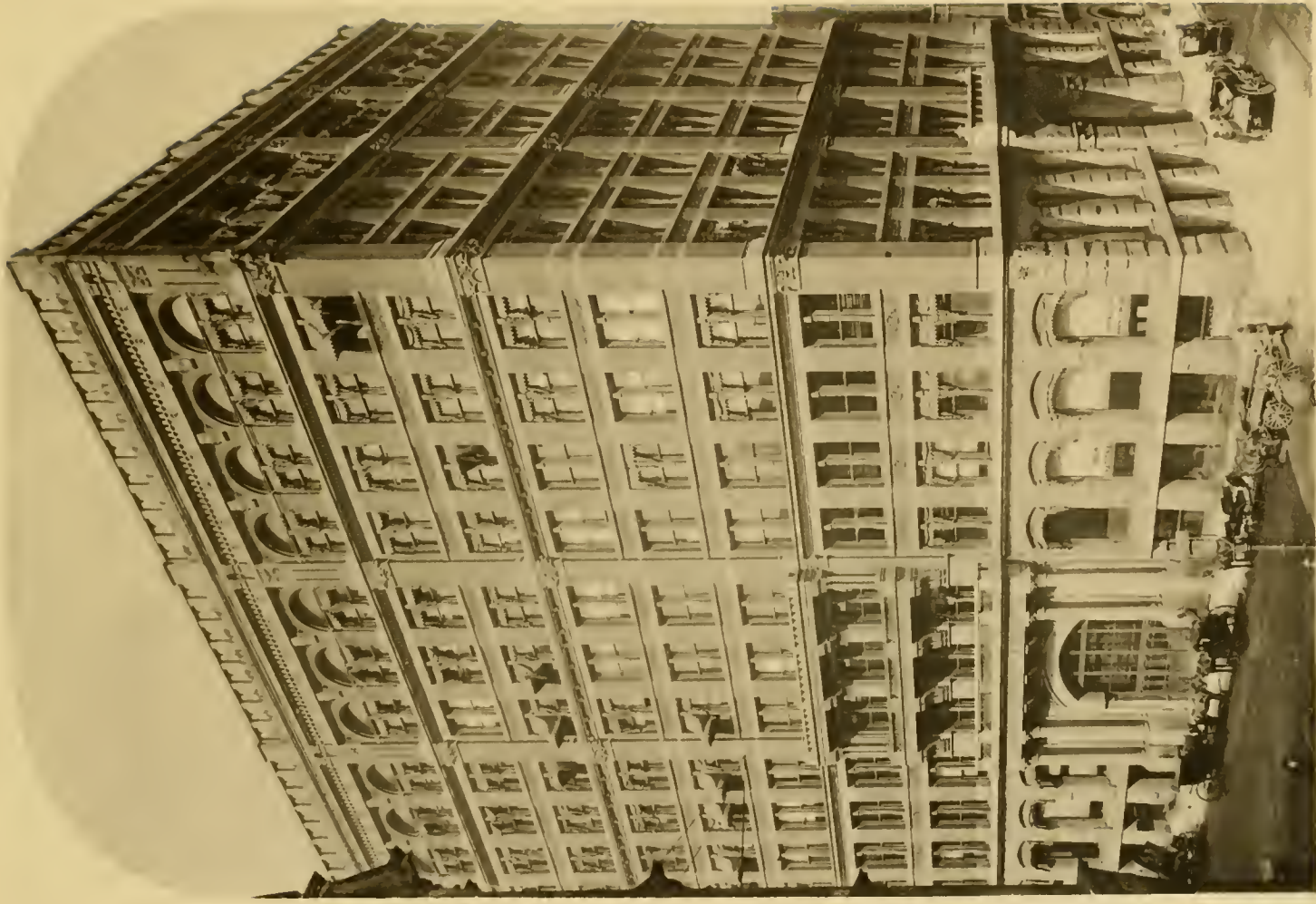
BREAKWATER OPPOSITE LAKE PARK



THE ROCKERY, Adams and La Salle Streets.



ELLIS PARK.



HOME INSURANCE BUILDING — La Salle and Monroe Streets



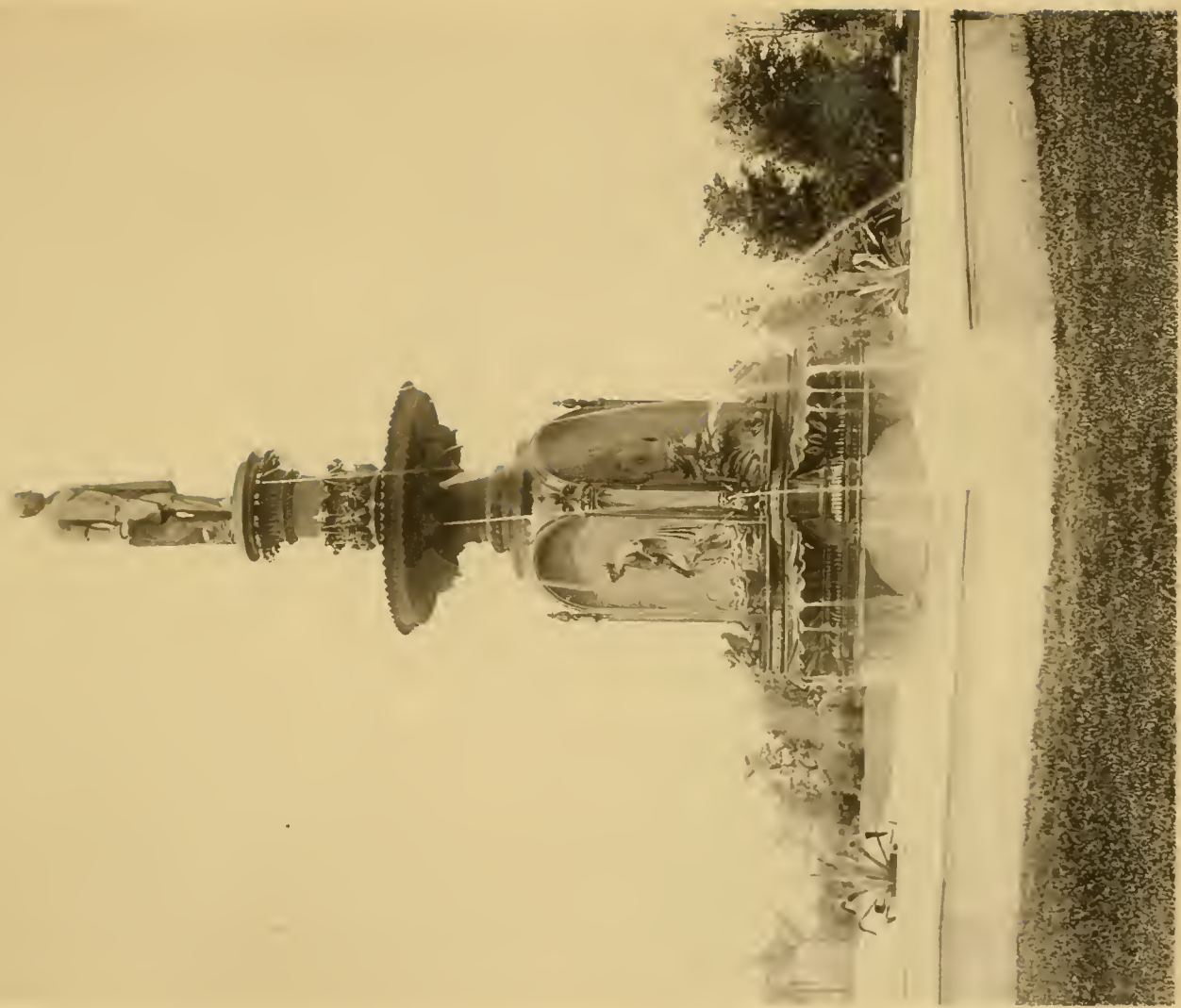
WABASH AVENUE CORNER MADISON STREET



LIBBY PRISON



EVENING HUMBOLDT PARK



DREXEL FOUNTAIN - Drexel Boulevard and 51st Street.



DOUGLAS MONUMENT - Douglas Park.



DOUGLAS MONUMENT - Douglas Park.



CHICAGO RIVER, from Clark Street Bridge.



LAKE SHORE DRIVE -NEAR GRANT STATUE.

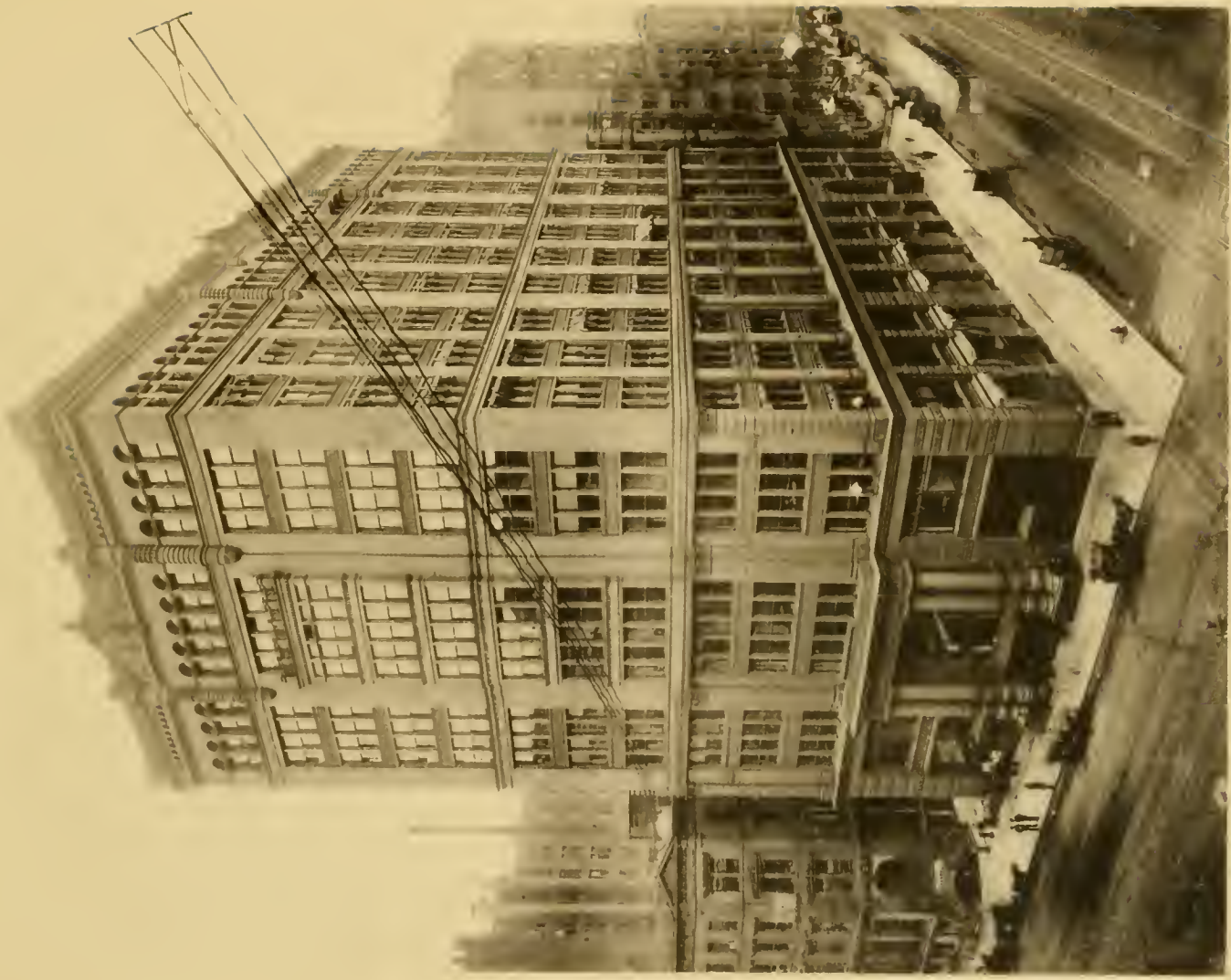


Marshall Field & Co's.

CENTRAL MUSIC HALL State and Randolph Streets.



LAKE SHORE DRIVE, from Oak Street.



CHAMBER OF COMMERCE.



GERMANIA HALL, North Clark Street, South of North Avenue.



R. A. M. Church

Maryetta School

College of Physicians and Surgeons.

WEST HARRISON STREET.



DERBY DAY—Washington Park.



GARFIELD PARK LAKE, from the Conservatory.



NORTH SIDE WATER WORKS.



ARMOUR MISSION 33rd AND BUTTERFIELD STREETS.



South Congregational Church.

DREXEL BOULEVARD - north from W. Starbuck's Residence.



ACADEMY OF THE SACRED HEART AND CATHEDRAL OF THE HOLY NAME,
North State Street near Chicago Avenue.



DREXEL BOULEVARD, South of Allen Flats.



MERCY HOSPITAL, Calumet Avenue and 26th Street.



JESUIT CHURCH AND COLLEGE, West 12th Street.

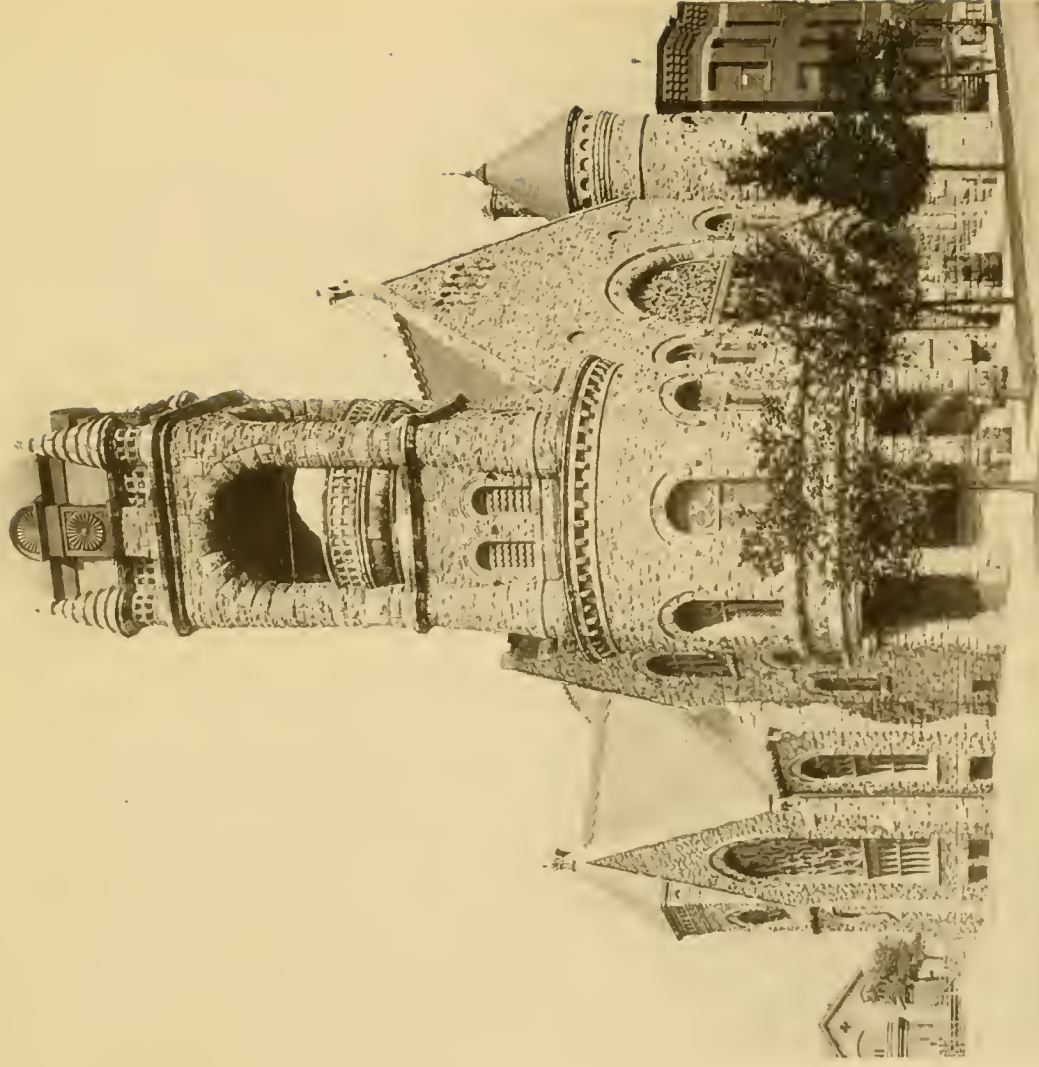


PLYMOUTH CHURCH, Michigan Ave. near 25th Street.

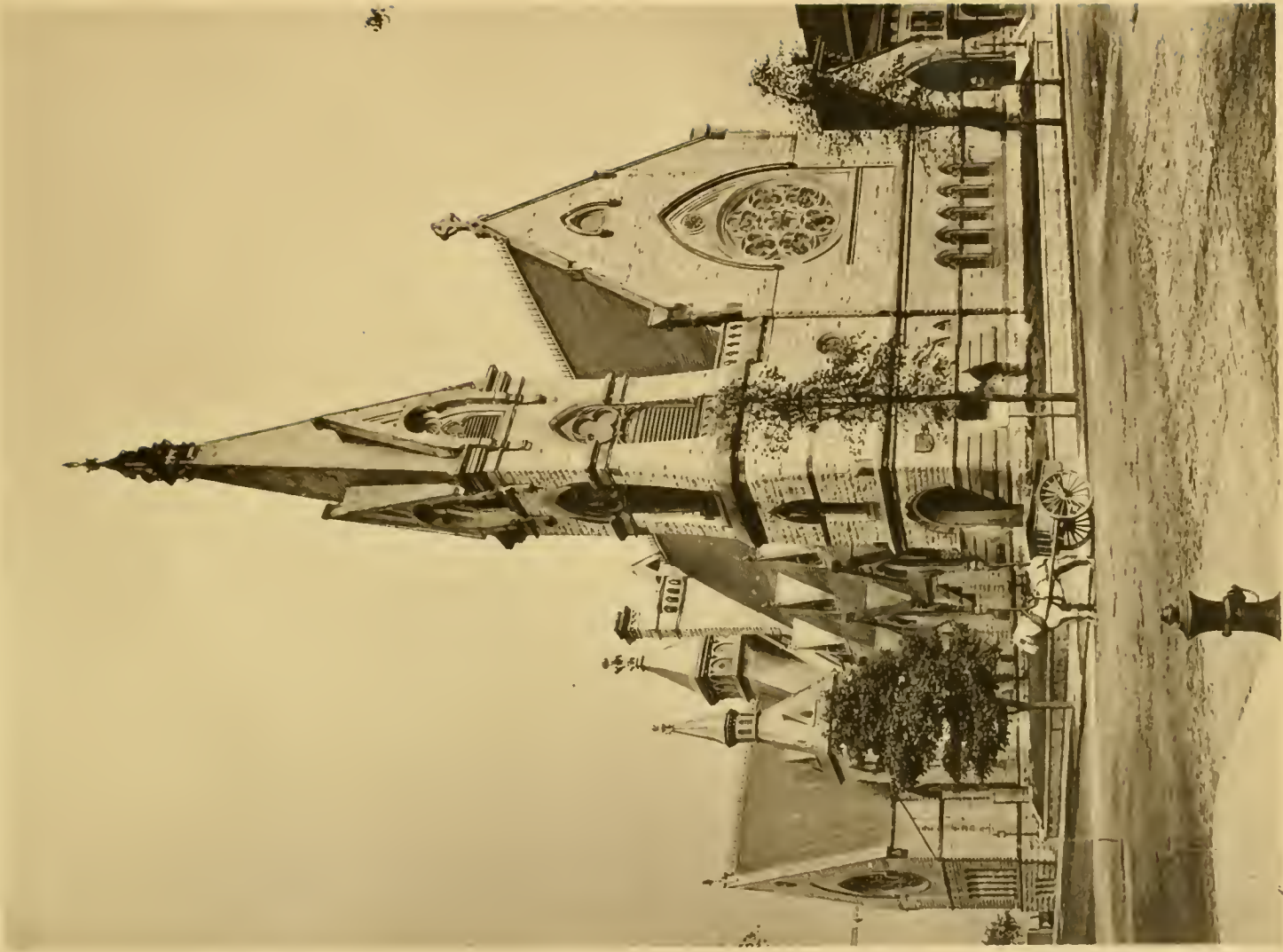


ST. PAUL'S UNIVERSALIST CHURCH—Prairie Avenue, Cor. 30th Street.

12



SOUTH CONGREGATIONAL CHURCH — Drexel Boulevard and 40th Street.



CHURCH OF THE MESSIAH Michigan Ave. cor. 23rd Street.



ENTRANCE UNION STOCK YARDS.



UNION STOCK YARDS.



WASHINGTON PARK CLUB HOUSE NEAR 61st STREET



BIRDS-EYE VIEW OF THE COLUMBIAN EXPOSITION, 1893



JACKSON PARK - BASE BALL GROUNDS.





MAR 77



LIBRARY OF CONGRESS



0 016 095 394 9 ●