

# Introducing Wikidata

... Partnerships

**WIKIMANIA  
SINGAPORE**

Alan Ang, Partner Manager  
Wikimedia Deutschland



# Agenda

- General understanding of Linked Open Data & Wikidata
- Editing and Querying Wikidata
- Wikidata Partnerships
- Check-in (30 mins)



# Speaker

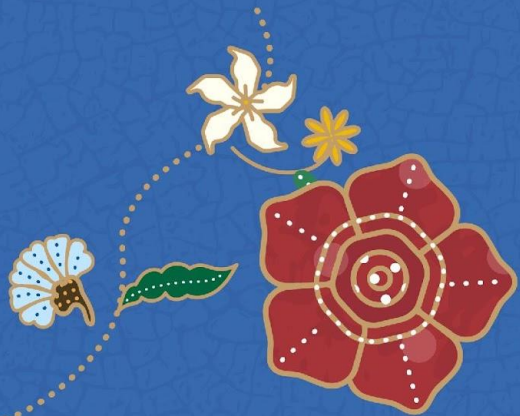


## **Alan Ang**

Partner Manager, Wikimedia Deutschland

User: [Alan Ang \(WMDE\)](#)

Email: [alan.ang@wikimedia.de](mailto:alan.ang@wikimedia.de)



**WIKIMANIA  
SINGAPORE**

Tuesday, August 15



# Linked Open Data (LOD)

A Quick Overview

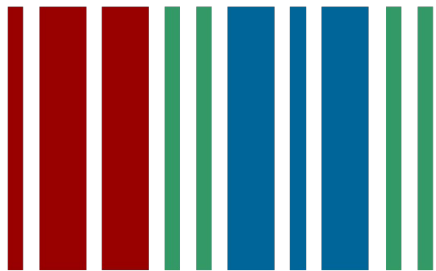
**WIKIMANIA  
SINGAPORE**



# WIKIBASE SUITE



WIKIBASE  
CLOUD



WIKIDATA

WIKIMANIA  
SINGAPORE

Wikibase is an open-source database application that allows for collaborative editing and management of structured data.

It now comes in two forms: Suite and Cloud.

Suite is a Docker install that requires a solid technical understanding to use.

Cloud is our new WMDE hosted service that is accessible to smaller, less tech savvy users.

Wikidata is a free and open **knowledge graph**, giving you access to high quality, **up-to-date machine-readable data** and powers projects such as Wikipedia

# Linked Open Data

## Open Data: What is it and why is it important?

... data that is freely available for anyone to access and use. Open data is important because it can be used by individuals, businesses, and governments to make better decisions and to create new products and services.

## Linked Data: What is it and how does it work?

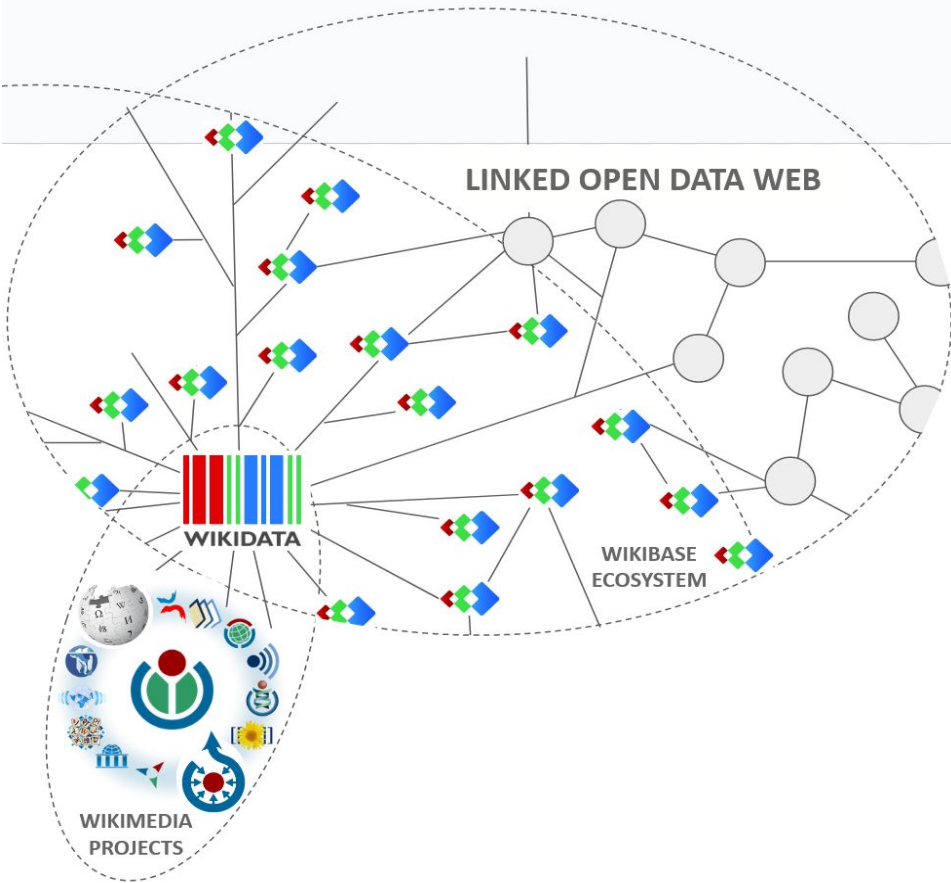
Linked data is a way of publishing data on the web so that it can be easily connected to other data and information. Linked data works by using standardized formats and protocols to link data together, making it possible to discover and retrieve information in a more efficient and effective way.

## LOD principles: The principles that make Linked Open Data so powerful

Linked Open Data (LOD) is a set of principles for publishing and sharing data on the web in a way that makes it easy to connect and reuse. The principles of LOD include using standardized formats and protocols, making data openly available, and linking data to other datasets to create a web of interconnected information.

WIKIMANIA  
SINGAPORE





# Linked Open Data Ecosystem

**WIKIMANIA  
SINGAPORE**



# WIKIDATA

**WIKIMANIA  
SINGAPORE**

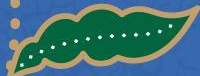
- Knowledge graph
- Part of the Wikimedia projects
- Structured data
- Linked to many other databases, catalogues, websites, etc.
- Multilingual
- Collaborative
- Released under public domain (CC0)
- Based on statements and references
- Made for humans and machines

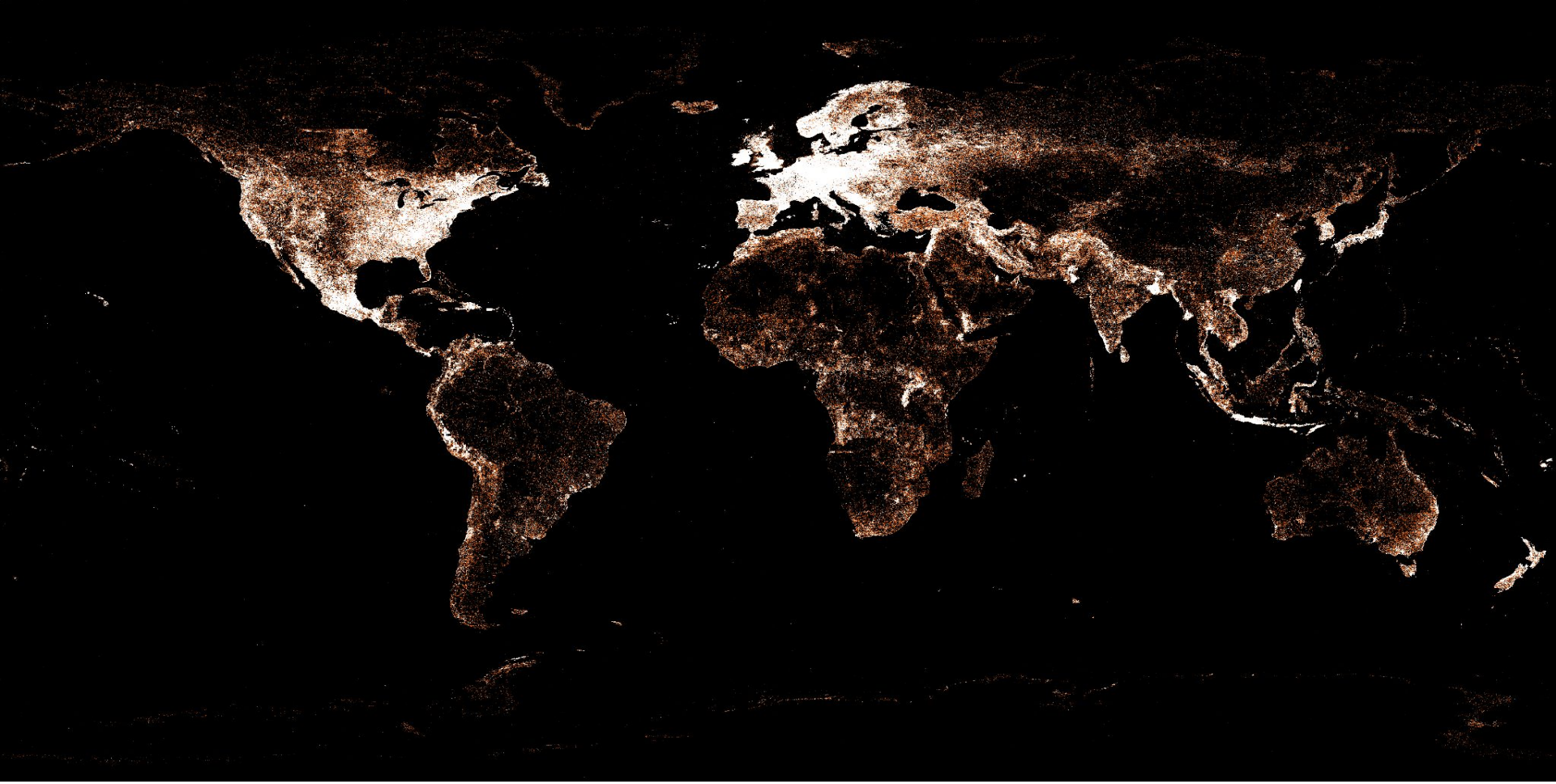


# A few numbers

- Launched 29 October 2012
- As of Jan 2023, there were over 100 million data items
- Around 23,000 active editors (with more than 1 edit per month)
- The most edited Wikimedia project

**WIKIMANIA  
SINGAPORE**

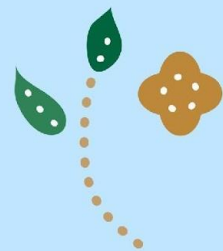




**100+ million data items**

# Goals

- Give more people more access to more knowledge
- A free and open knowledge base that can be read and edited by both humans and machines
- To provide support inside and outside the Wikimedia projects
- To provide a freely usable repository and a hub for linked open data



# Example use on Wikipedia



## Lee Kuan Yew

Article Talk

From Wikipedia, the free encyclopedia

*In this Chinese name, the family name is Lee (李).*

**Lee Kuan Yew** (born **Harry Lee Kuan Yew**; 16 September 1923 – 23 March 2015), often referred to by his initials **LKY**, was a Singaporean lawyer and statesman who was the first **Prime Minister of Singapore** from 1959 to 1990. Lee was secretary-general of the governing **People's Action Party** between 1954 and 1992 and the **Member of Parliament** (MP) for **Tanjong Pagar** from 1955 until his death in 2015. Lee is widely recognised as the founding father of the modern Singaporean state, and for his leadership in turning the island from a third-world country to a first-world one.<sup>[2][3]</sup>

Lee was born in Singapore during British colonial rule. After graduating from Raffles Institution, he won a scholarship to Raffles College (now the National University of Singapore). During the Japanese occupation, Lee escaped being the victim of a purge,<sup>[4]</sup> before subsequently starting his own businesses while working as an administration service officer for the Japanese propaganda office. After World War II ended, Lee briefly attended the London School of Economics before transferring to Fitzwilliam College, Cambridge to study law, graduating with a double first degree in 1947. He was called to the Bar from the Middle Temple in 1950. Upon his return to Singapore, he practised as an advocate and solicitor whilst campaigning for the British to relinquish their colonial rule.

Lee co-founded the **People's Action Party** (PAP) in 1954 and won his first seat at the **Tanjong Pagar** division during the 1955 general election. He became the *de facto* opposition leader in parliament, to Chief Ministers David Marshall and Lim Yew Hock of the Labour Front. Lee led his party to its first electoral victory in 1959 and was appointed as the state's first prime minister. To attain complete home rule from Britain, Lee campaigned for a merger with other former British territories in a national referendum to form Malaysia in 1963. Racial strife and ideological differences later led to Singapore's expulsion from Malaysia and subsequent independence in 1965, less than two years after the merger.

With overwhelming parliamentary control at every general election, Lee oversaw Singapore's transformation into a developed country with a high-income economy within his premiership. In the process, he forged a highly effective, anti-corrupt government and civil service. Lee eschewed populist policies in favour of long-term social and economic planning, championing civic nationalism through meritocracy<sup>[5]</sup> and multiracialism<sup>[6][7]</sup> as governing principles, making English the lingua franca<sup>[8]</sup> to integrate its immigrant society and to facilitate trade with the world, whilst mandating bilingualism in schools to preserve the students' mother tongue and ethnic identity.<sup>[8]</sup> Lee stepped down as prime minister in 1990, but remained in the Cabinet under his successors, holding the appointments of Senior Minister until 2004, then Minister Mentor until 2011. He died of pneumonia on 23 March 2015, at the age of 91. In a week of national mourning, about 1.7 million residents and world leaders paid tribute to him at his lying-in-state at Parliament House and community tribute sites.

An advocate for Asian values and a proponent of pragmatism,<sup>[9]</sup> Lee's premiership especially in the West was described as being semi-authoritarian and characterised as a sort of a hybrid regime or a guided democracy.<sup>[10][11][12][13]</sup> Critics have accused him of curtailing press freedoms, imposing narrow limits on public protests, restricting labour movements from industrial or strike action through anti-union legislation and co-option,<sup>[14]</sup> and bringing defamation lawsuits against prominent political opponents.<sup>[15][16]</sup> However, others argue his actions were necessary for the country's early development, and that he was a benevolent dictator.<sup>[17][18]</sup>

## Early life [ edit source ]

## Childhood and early education [ edit source ]

Lee was born at home on 16 September 1923, the first child of Lee Chin Koon, a Semarang born Singaporean,<sup>[19]</sup> and Chua Jim Neo, at 92 Kampong Java Road in Singapore, then part of the British Empire.<sup>[20]</sup> Both of Lee's parents were English-educated third-generation Straits Chinese,<sup>[21]</sup> with his paternal side being of Hakka descent from Dabu County.<sup>[22][23]</sup> He was named "Kuan Yew," meaning "light and brightness", alternately meaning "bringing great glory to one's ancestors". Lee's paternal grandfather Lee Hoon Leong, who was described as "especially westernised", had worked on British ships as a purser, and hence gave Lee the Western name "Harry".<sup>[24]</sup> While the family spoke English as its first language, Lee also learned Malay.<sup>[20]</sup> Lee would have three brothers and one sister, all of whom lived till old age.<sup>[25]</sup>

Lee was not close to his father, who worked as a storekeeper within the Shell Oil Company and had a gambling addiction. His mother Chua would often stand up against her husband for his poor fiscal management and parenting skills.<sup>[26]</sup> The family was considered prosperous with a high social standing compared to recent immigrants and had the expenses to hire servants.<sup>[27]</sup> During the Great Depression the family fortunes declined considerably, though Lee's father retained his job at Shell.<sup>[20]</sup> Later in life, Lee described his father as a man with a nasty temper and credited his mother with holding the family together amidst her husband's gambling addiction.<sup>[28][29]</sup>

In 1930, Lee enrolled at Telok Kurau English School where he spent six years of his primary education.<sup>[30][31]</sup> Attending Raffles Institution in 1935, Lee did poorly in his first two years but later topped the Junior Cambridge examinations.<sup>[32]</sup> He also joined the Scouts and partook in several physical activities and debates.<sup>[33]</sup> Lee was the top scorer in the Senior Cambridge examinations in 1940 across the Straits Settlements and Malaya, gaining the John Anderson scholarship to attend Raffles College.<sup>[31]</sup> During the prize-awarding ceremony, Lee met his future wife Kwa Geok Choo; she was the only girl at the school.<sup>[32]</sup> His subsequent university studies at Raffles College were disrupted by the onset of World War II in Asia, with the

## Infobox based on Wikidata

96 languages   
Read Edit source View history

<span></span>
<div><div><span></span></div><div><div><span>The Honourable</span></div><div><b>Lee Kuan Yew</b></div><div><span>CGMG CH SPMU DK</span></div><div><span>李光耀</span></div></div></div>
<span></span> <div>Lee in 1975</div>
<span></span>
1st Prime Minister of Singapore
<div><b>In office</b></div>
5 June 1959 <span> </span> – <span> </span> 28 November 1990
President
<div><div><span>Yusof Ishak</span></div><div><span>Benjamin Sheares</span></div><div><span>Devan Nair</span></div><div><span>Wee Kim Wee</span></div></div>
Deputy
<div><div><span>Toh Chin Chye</span></div><div><span>Goh Keng Swee</span></div><div><span>S. Rajaratnam</span></div><div><span>Goh Chok Tong</span></div><div><span>Ong Teng Cheong</span></div></div>
Preceded by
<span>Lim Yew Hock</span>
Succeeded by
<span>Goh Chok Tong</span>
Member of Parliament for Tanjong Pagar
<div><b>In office</b></div>
22 April 1955 <span> </span> – <span> </span> 23 March 2015

# Example Wikidata item

Item label

Lee Kuan Yew

(Q131248)

Item identifier

1st Prime Minister of Singapore (1923-2015)

Item description

 edit

Aliases

LKY | Harry Lee | MM Lee | Li Guanyao

[In more languages](#)

Language	Label	Description	Also known as
English	Lee Kuan Yew	1st Prime Minister of Singapore (1923-2015)	LKY Harry Lee MM Lee Li Guanyao
German	Lee Kuan Yew	singapurischer Politiker	Lee Kwan-Yew
Vietnamese	Lý Quang Diệu	thủ tướng đầu tiên của Singapore	Harry Lee Kuan Yew Lee Kuan Yew Lee Kwan-Yew
Chinese	李光耀	新加坡建国之父、首任总理	新加坡国父 新加坡建国总理

[All entered languages](#)

Termbox



# Structure of the data 1/3

**Triple structure:** data on Wikidata is modelled according to a triple structure

Lee Kuan Yew (Q131248) **Item identifier (Q item)**

1st Prime Minister of Singapore (1923-2015)

LKY | Harry Lee | MM Lee | Li Guangyao

 edit

[In more languages](#)

## Statements

**Property**

instance of

human

**Value**

 edit

[2 references](#)

[+ add value](#)



# Structure of the data 2/3

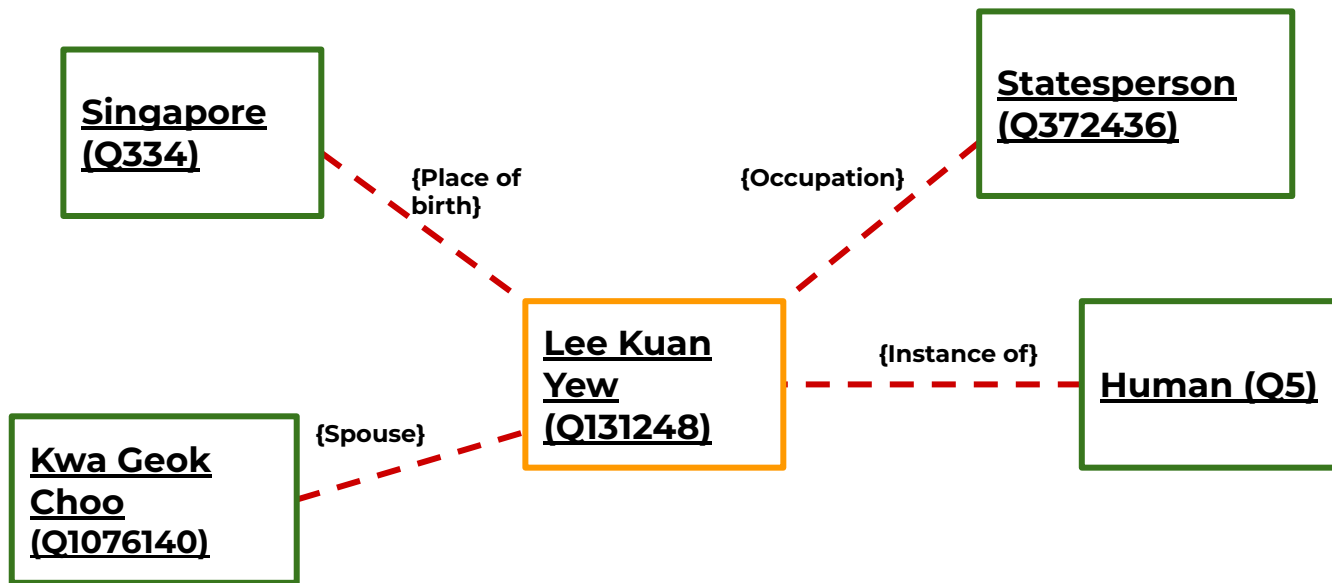
**Adding extra detail beyond the triple structure:**  
qualifiers and references

The image shows a user interface for a data property. On the left, a grey box contains the property name 'spouse' in a red-bordered box, with a red line pointing to the word 'Property' below it. To the right, a scrollable list of values is shown. The first value is 'Kwa Geok Choo', which is highlighted with a green box and labeled 'Value'. Below this value are two qualifiers: 'start time' with the value '30 September 1950' and 'end time' with the value '2 October 2010'. A grey box highlights these two qualifiers, with a line pointing to the word 'Qualifier'. Below the qualifiers is a section for references, starting with a dropdown arrow and the text '1 reference'. Below this is a reference entry: 'The Peerage person ID' with the value 'p44393.htm#i443925' and 'retrieved' with the value '7 August 2020'. A grey box highlights this reference entry, with a line pointing to the word 'Reference'. At the bottom right of the reference section is a '+ add reference' button. In the bottom right corner of the slide, there is an illustration of several skewers of red and brown kebabs.

Property	Value	Qualifier	Reference
spouse	Kwa Geok Choo	start time: 30 September 1950 end time: 2 October 2010	1 reference The Peerage person ID: p44393.htm#i443925 retrieved: 7 August 2020

# Structure of the data 3/3

**Linking data:** items are linked to each other





- Wikidata is made up of Items (e.g. Lee Kuan Yew)
- Every Item has a random and unique Q number (e.g. Q131248 for Lee Kuan Yew)
- A triple structure is used to model data on Wikidata (Item, Property, Value)
- Additional detail can be added to statements through qualifiers and references
- Items are linked to each other as well as places in other databases/catalogues, hence the name “linked data”

**WIKIMANIA  
SINGAPORE**



# Editing Wikidata

**WIKIMANIA  
SINGAPORE**



# Manual Edits

- Create a new Item
- Editing an existing Item

WIKIMANIA  
SINGAPORE



Main page  
Community portal  
Project chat  
Create a new Item  
Recent changes  
Random Item  
Query Service  
Nearby  
Help  
Donate

Lexicographical data  
Create a new Lexeme  
Recent changes  
Random Lexeme

Tools  
What links here  
Related changes  
Special pages  
Permanent link  
Page information  
Concept URI  
Cite this page

Item [Discussion](#)

## Lee Kuan Yew (Q131248)

1st Prime Minister of Singapore (1923-2015)

LKY | Harry Lee | MM Lee | Li Guangyao

[In more languages](#)

### Statements

instance of



human

[2 references](#)

image



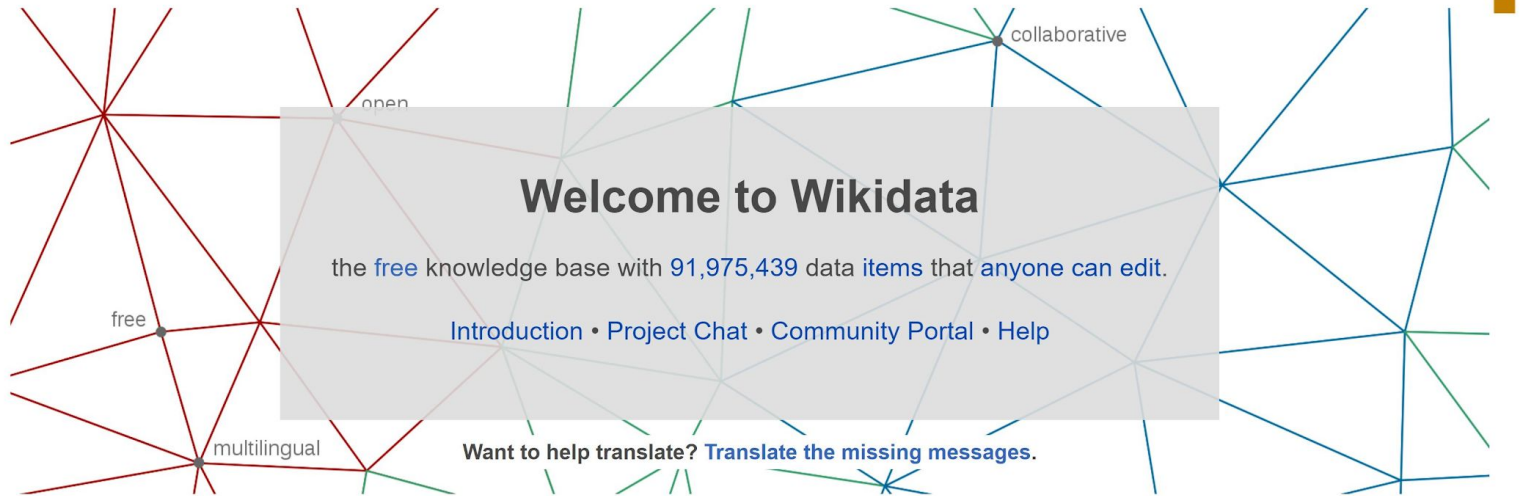
Lee Kuan Yew.jpg

618 × 824; 256 KB

[point in time](#)

2002

[1 reference](#)

[Main Page](#) [Discussion](#)[Read](#)[View source](#)[View history](#)[Main page](#)  
[Community portal](#)  
[Project chat](#)[Create a new Item](#)[Recent changes](#)[Random Item](#)[Query Service](#)[Nearby](#)[Help](#)[Donate](#)[Lexicographical data](#)[Create a new Lexeme](#)[Recent changes](#)[Random Lexeme](#)[Tools](#)[What links here](#)[Related changes](#)[Special pages](#)[Permanent link](#)

# Welcome to Wikidata

the [free](#) knowledge base with [91,975,439](#) data items that [anyone can edit](#).

[Introduction](#) • [Project Chat](#) • [Community Portal](#) • [Help](#)

Want to help translate? [Translate the missing messages](#).

collaborative

open

free

multilingual



## Welcome!

Wikidata is a free and open knowledge base that can be read and edited by both humans and machines.

Wikidata acts as central storage for the **structured data** of its Wikimedia sister projects including Wikipedia, Wikivoyage, Wiktionary, Wikisource,



## Learn about data

New to the wonderful world of data? [Develop and improve your data literacy through content](#) designed to get you up to speed and feeling comfortable with the fundamentals in no time.

## Create a new Item

Please make sure that the item you want to create complies with our [notability policy](#) and that it doesn't already exist.

If you want to create an item about a [living person](#), be mindful of their privacy.

We appreciate it if you create a [label](#) and a [description](#) for all of your new items.

The first letter of your label should only be capitalized if it is a [proper noun \(Q147276\)](#), and your description should *not* be phrased as a sentence.

By clicking "Create", you agree to the [terms of use](#), and you irrevocably agree to release your contribution under the [Creative Commons CC0 License](#).

### Create a new Item

Language:

en

Label:

Maltiti Duke

Description:

Ghanaian-born Australian soccer player

Aliases, pipe-separated:

Maltiti Osu Duke

Create

<https://www.wikidata.org/wiki/Special:NewItem>



Special page

Search Wikidata

# Create a new Item

Please make sure that the item you want to create complies with our [notability policy](#) and that [it doesn't already exist](#).

If you want to create an item about a [living person](#), be mindful of their privacy.

We appreciate it if you create a [label](#) and a [description](#) for all of your new items.

The first letter of your label should only be capitalized if it is a [proper noun \(Q147276\)](#), and your description should *not* be phrased as a sentence.

By clicking "Create", you agree to the [terms of use](#), and you irrevocably agree to release your contribution under the [Creative Commons CC0 License](#).

## Create a new Item

Language:

Label:

Description:

Aliases, pipe-separated:

- Main page
- Community portal
- Project chat
- Create a new Item**
- Recent changes
- Random Item
- Query Service
- Nearby
- Help
- Donate

- Lexicographical data
- Create a new Lexeme
- Recent changes

- Tools
- Special pages
- Printable version





# Wikidata Sandbox (Q4115189)

This is a sandbox for testing changes to items. Please be gentle with it. Feel free to change anything on this page! For testing links, try adding ones to userpages.

sandbox | SB | Property test | test | Wikidata SandboxItem | Wikidata BOX | sandbox to be merged

### In more languages

Configure

Language	Label	Description	Also known as
English	Wikidata Sandbox	This is a sandbox for testing changes to items. Please be gentle with it. Feel free to change anything on this page! For testing links, try adding ones to userpages.	sandbox SB Property test test Wikidata SandboxItem Wikidata BOX sandbox to be merged
Akan	No label defined	No description defined	
Ewe	No label defined	No description defined	

All entered languages

## Statements

instance of human edit

0 references

+ add reference

+ add value

- Main page
- Community portal
- Project chat
- Create a new Item
- Recent changes
- Random Item
- Query Service
- Nearby
- Help
- Donate
- Lexicographical data
- Create a new Lexeme
- Recent changes
- Random Lexeme
- Tools
- What links here
- Related changes
- Special pages
- Permanent link
- Page information
- Cite this page
- Concept URI



Wikidata sandbox - <https://www.wikidata.org/wiki/Q4115189>



# Automated Edits

- [QuickStatements](#)
- [OpenRefine](#)

## Other tools

- [Wikidata Terminator](#)
- [Mix'n'match](#)
- [Cradle](#)
- [Wikidata FIST](#)

WIKIMANIA  
SINGAPORE

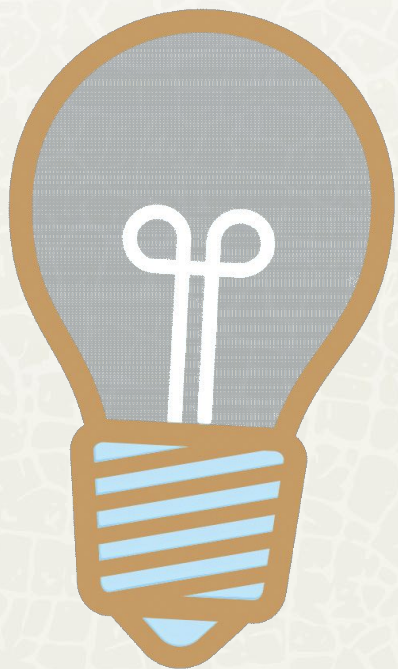
QuickStatements English  [New batch](#) [Last batches](#) [Chat](#) [Git](#) [Help](#)

Batch "Punjabi authors from pawiki category" on Wikidata by Wikilover90 [[Batches](#)] [D](#)

Status: DONE 

1	 Shiv Kumar Batalvi [Q3629539]	<a href="#">ADD</a>	Statement	instance of [P31] : human (Q5)
2	 Shiv Kumar Batalvi [Q3629539]	<a href="#">ADD</a>	Statement	languages spoken, written or signed (P106) : Punjabi (Q3629539)
3	 Shiv Kumar Batalvi [Q3629539]	<a href="#">ADD</a>	Statement	occupation [P106] : writer (Q3629539)
4	 Shiv Kumar Batalvi [Q3629539]	<a href="#">ADD</a>	Statement	writing language [P6886] : Punjabi (Q3629539)
5	 Nanak Singh [Q3696295]	<a href="#">ADD</a>	Statement	instance of [P31] : human (Q5)
6	 Nanak Singh [Q3696295]	<a href="#">ADD</a>	Statement	languages spoken, written or signed (P106) : Punjabi (Q3696295)
7	 Nanak Singh [Q3696295]	<a href="#">ADD</a>	Statement	occupation [P106] : writer (Q3696295)
8	 Nanak Singh [Q3696295]	<a href="#">ADD</a>	Statement	writing language [P6886] : Punjabi (Q3696295)
9	 Pash [Q3694942]	<a href="#">ADD</a>	Statement	instance of [P31] : human (Q5)
10	 Pash [Q3694942]	<a href="#">ADD</a>	Statement	languages spoken, written or signed (P106) : Punjabi (Q3694942)
11	 Pash [Q3694942]	<a href="#">ADD</a>	Statement	occupation [P106] : writer (Q3694942)
12	 Pash [Q3694942]	<a href="#">ADD</a>	Statement	writing language [P6886] : Punjabi (Q3694942)
13	 Bhai Vir Singh [Q3631340]	<a href="#">ADD</a>	Statement	instance of [P31] : human (Q5)
14	 Bhai Vir Singh [Q3631340]	<a href="#">ADD</a>	Statement	languages spoken, written or signed (P106) : Punjabi (Q3631340)
15	 Bhai Vir Singh [Q3631340]	<a href="#">ADD</a>	Statement	occupation [P106] : writer (Q3631340)
16	 Bhai Vir Singh [Q3631340]	<a href="#">ADD</a>	Statement	writing language [P6886] : Punjabi (Q3631340)
17	 Gurbaksh Singh Preetlari [Q11651735]	<a href="#">ADD</a>	Statement	instance of [P31] : human (Q5)
18	 Gurbaksh Singh Preetlari [Q11651735]	<a href="#">ADD</a>	Statement	languages spoken, written or signed (P106) : Punjabi (Q11651735)
19	 Gurbaksh Singh Preetlari [Q11651735]	<a href="#">ADD</a>	Statement	occupation [P106] : writer (Q11651735)
20	 Gurbaksh Singh Preetlari [Q11651735]	<a href="#">ADD</a>	Statement	writing language [P6886] : Punjabi (Q11651735)
21	 Gurdial Singh [Q5619923]	<a href="#">ADD</a>	Statement	instance of [P31] : human (Q5)
22	 Gurdial Singh [Q5619923]	<a href="#">ADD</a>	Statement	languages spoken, written or signed (P106) : Punjabi (Q5619923)
23	 Gurdial Singh [Q5619923]	<a href="#">ADD</a>	Statement	occupation [P106] : writer (Q5619923)
24	 Gurdial Singh [Q5619923]	<a href="#">ADD</a>	Statement	writing language [P6886] : Punjabi (Q5619923)
25	 Kartar Singh Duggal [Q6373506]	<a href="#">ADD</a>	Statement	instance of [P31] : human (Q5)
26	 Kartar Singh Duggal [Q6373506]	<a href="#">ADD</a>	Statement	languages spoken, written or signed (P106) : Punjabi (Q6373506)
27	 Kartar Singh Duggal [Q6373506]	<a href="#">ADD</a>	Statement	occupation [P106] : writer (Q6373506)





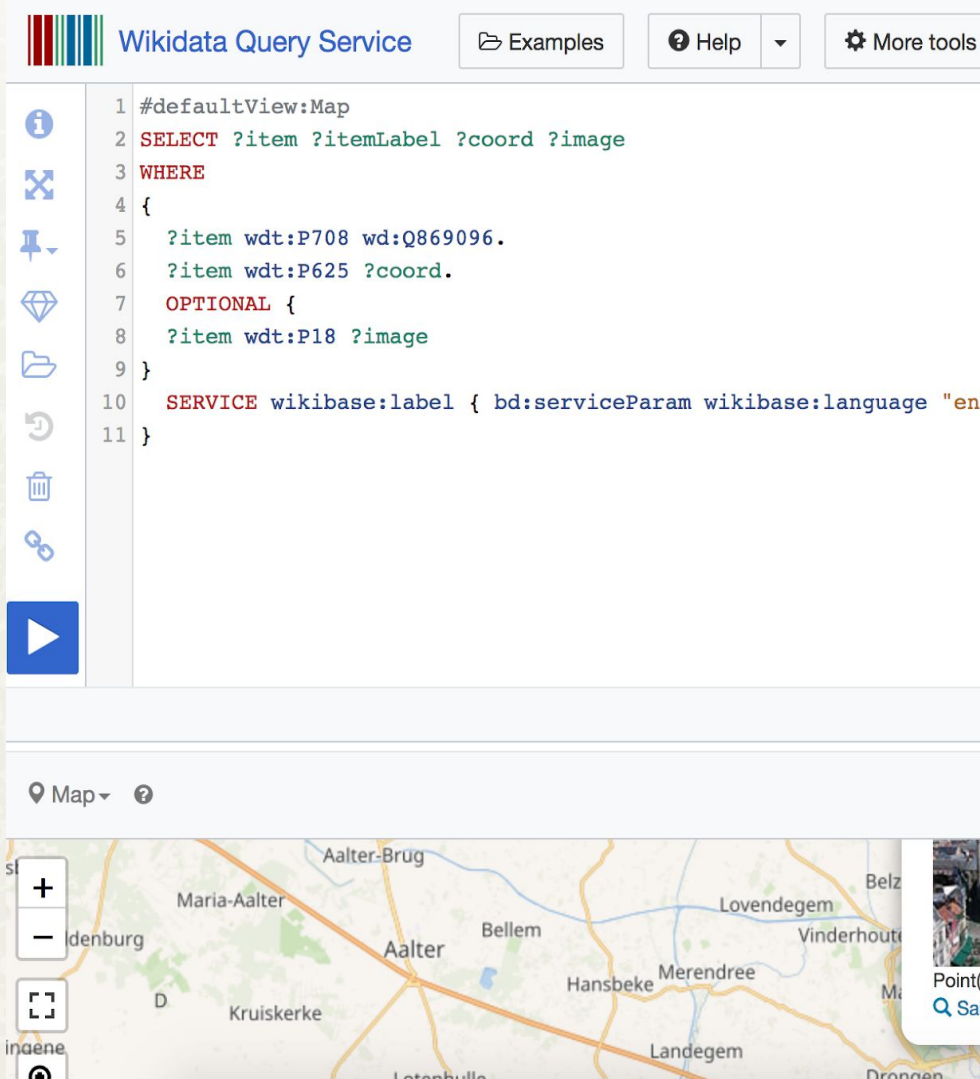
**WIKIMANIA  
SINGAPORE**

# Querying Wikidata

# Wikidata Query Service

- SPARQL language

**WIKIMANIA  
SINGAPORE**



The screenshot displays the Wikidata Query Service interface. At the top, there is a header with the Wikidata logo, the text "Wikidata Query Service", and three utility buttons: "Examples", "Help", and "More tools". Below the header is a text editor containing a SPARQL query:

```
1 #defaultView:Map
2 SELECT ?item ?itemLabel ?coord ?image
3 WHERE
4 {
5   ?item wdt:P708 wd:Q869096.
6   ?item wdt:P625 ?coord.
7   OPTIONAL {
8     ?item wdt:P18 ?image
9   }
10 SERVICE wikibase:label { bd:serviceParam wikibase:language "en"
11 }
```

To the left of the query editor is a vertical toolbar with icons for information, expand, pin, diamond, folder, refresh, trash, and link. A large blue play button is located below the toolbar. Below the query editor is a map view. The map shows a geographical area with labels for "Aalter-Brug", "Maria-Aalter", "Bellem", "Lovendegem", "Vinderhout", "Aalter", "Hansbeke", "Merendree", "Landegem", "Kruiskerke", "Denburg", and "D". The map includes standard navigation controls like a zoom-in (+) and zoom-out (-) button, a full-screen button, and a location pin icon. A small thumbnail image is visible in the bottom right corner of the map area.

# Wikidata Query Builder

- No SPARQL language

**WIKIMANIA  
SINGAPORE**

## Wikidata Query Builder

The Wikidata Query Builder provides a visual interface for building a simple Wikidata query. It is ideal for users with little or no experience in [SPARQL](#), the powerful query language. The Query Builder doesn't offer SPARQL's full functionality, but you can always open your query in the Query Service, where you can view, edit or expand it via the link above the results. [Feedback is welcome here.](#)

### Query

Find all items...

### Settings



Limit the number of results to



Show IDs instead of labels (may prevent timeout)

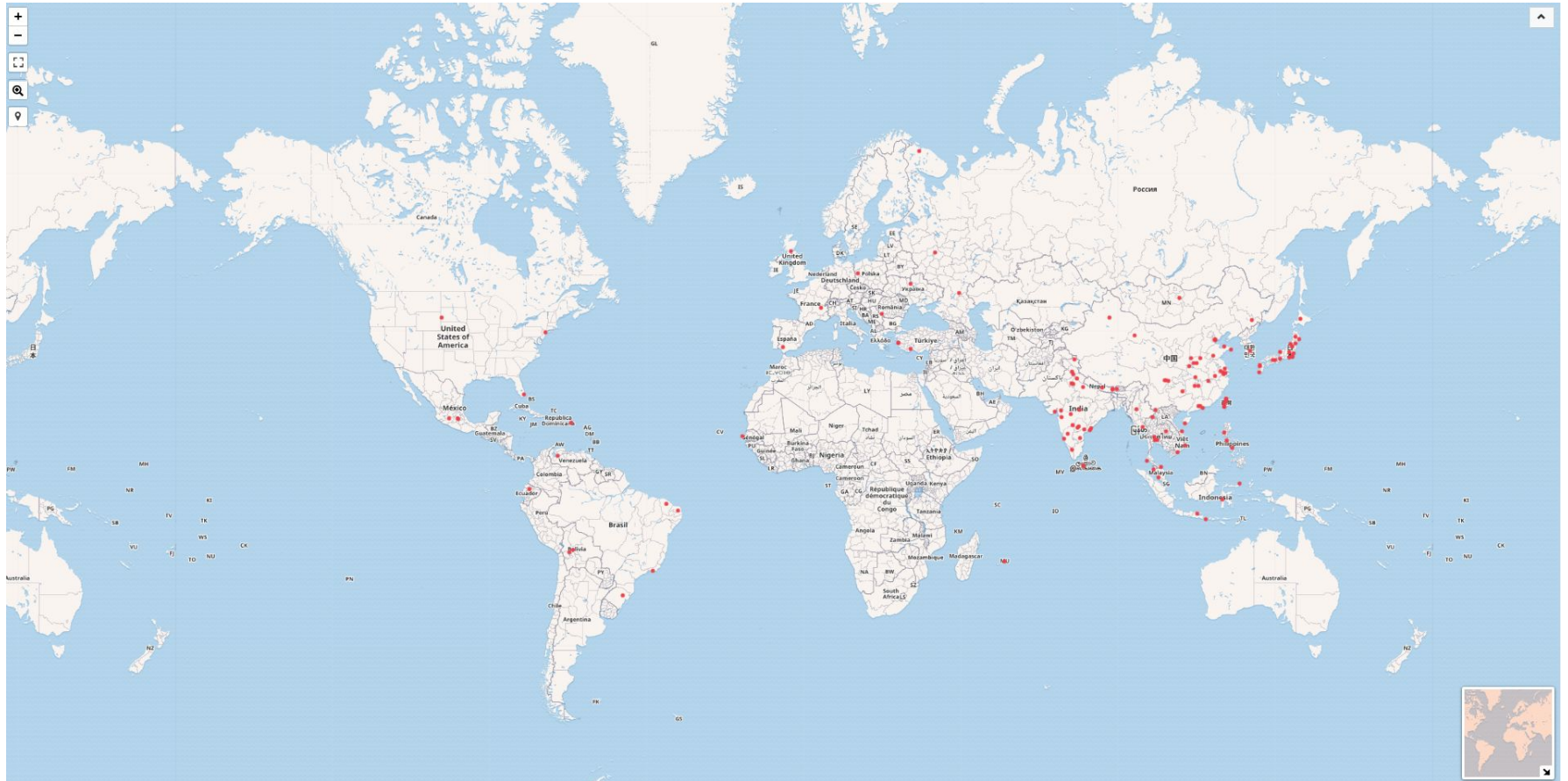
Get a shareable link



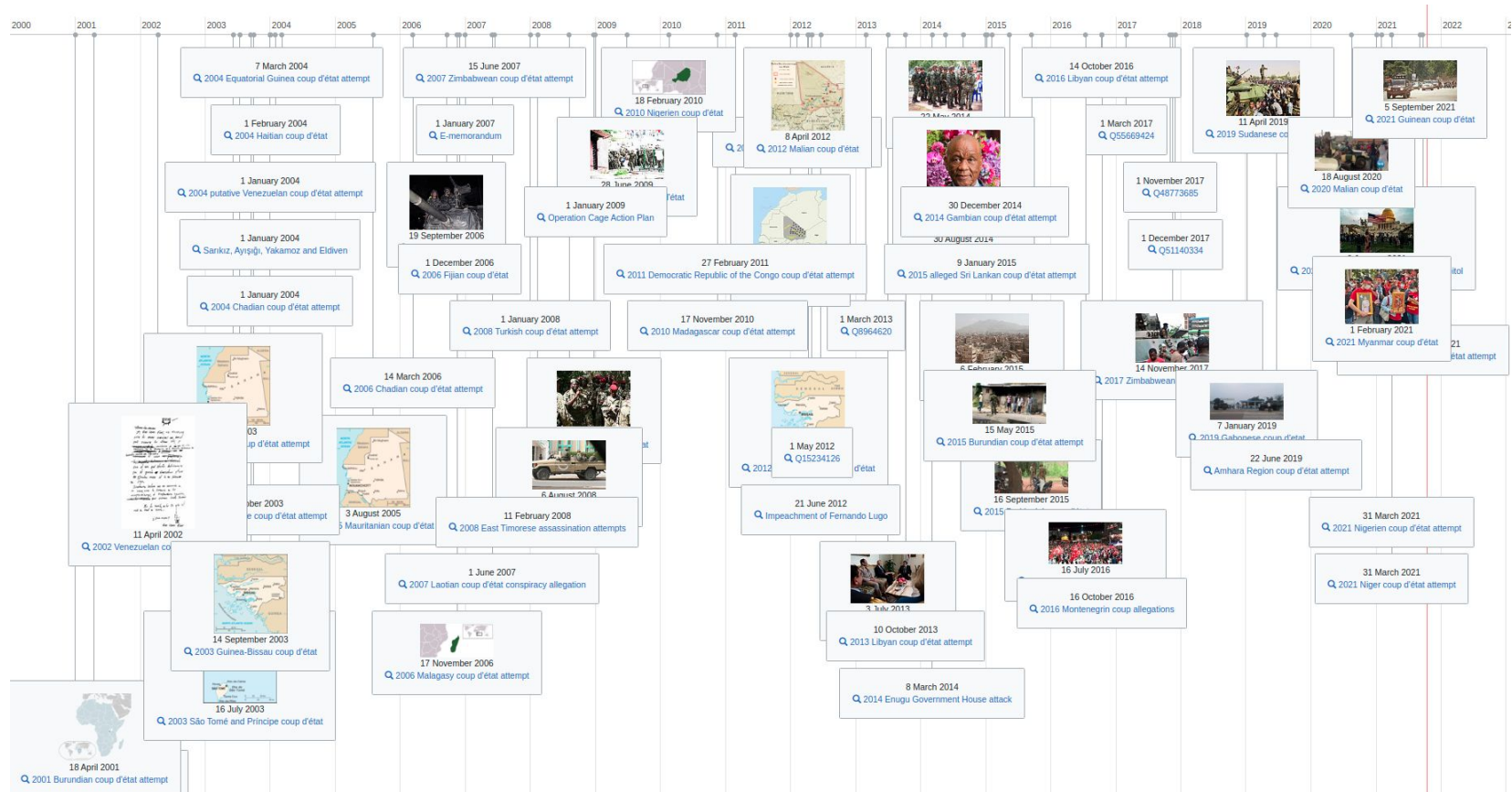
### Results

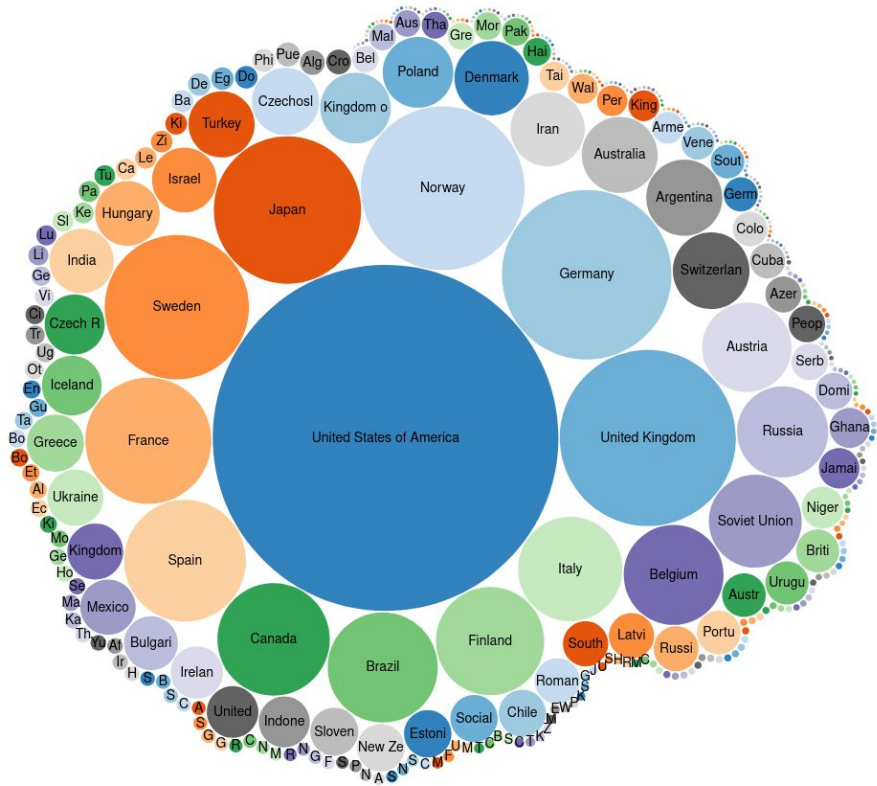
Results will be displayed

# Example query: statues measuring more than 30m in height



# Example query: timeline of coups d'état during the 21st century





**WIKIMANIA  
SINGAPORE**

**Example query:**  
Number of musicians in Wikidata by country

# Querying Wikidata

SPARQL: access and analyse data from Wikidata

15th Aug, 1100hrs, room 324

First Steps with SPARQL

16th Aug, 1115hrs, room 309

**WIKIMANIA**  
**SINGAPORE**



# Making use of Wikidata

**WIKIMANIA  
SINGAPORE**





# Wikidata Partnerships

- Who are data partners?
  - Organisations
- Re-use
  - Re-use Wikidata's data for different projects
- Contribute
  - Finding mismatches via Mismatch Finder
  - Data contribution
  - Build tools for Wikidata



# Who reuses Wikidata's data?

- Wikidata editors
- Wikimedia projects
- Companies, organisations and communities such as OpenStreetMap, Mapcarta, GovDirectory, Amazon, Microsoft, IBM, Orange etc
- Public institutions, GLAM, etc
- Newspapers, data journalists...
- Scientists and researchers, e.g. JStor Labs, OpenArtBrowser

See more re-users from Data Reuse Days [here](#)  
And many more, incl. some that we don't know about yet!

**WIKIMANIA**  
**SINGAPORE**



# Data Reuse

Data use and reuse: Unlocking the Potential of Frictionless Data for Wikidata

15th Aug, 1645hrs, room 324

# Data Partnerships

Data Partnerships and Future of Linked Open Data

19th Aug, 1445hrs, room 311

**WIKIMANIA**  
**SINGAPORE**



# Check in

- Should we engage or attract more organisation users to Wikidata?
- Should organisations contribute more to Wikidata? In what ways would you like for them to contribute to Wikidata?
- What do you think organisation users are concerned about with Wikidata?



**WIKIMANIA  
SINGAPORE**