

Historic, Archive Document

Do not assume content reflects current scientific knowledge, policies, or practices.

62.61

RECEIVED
★ JAN 24 1929 ★
U. S. Department of Agriculture

A GUIDE to the best Plants,
Shrubs and Trees that grow



SPIREA VAN HOUTTEI—THE MOST USEFUL FLOWERING SHRUB—SPECIAL PRICES ON PAGE 8

ALLEN L. WOOD

Woodlawn Nurseries

1876

1929

ROCHESTER, NEW YORK

“The Flower City”

891 GARSON AVENUE AT CULVER ROAD

My Life's Motto

“THE BEST THAT GROWS —
AT REASONABLE PRICES”

I wish it were possible for me to meet personally every one of you who receive a copy of this book because I know you are all interested in beautifying your home surroundings and in making your gardens and orchards profitable,—a most delightful task to which I have devoted a life time.

It is with your needs and desires constantly in mind that we have prepared this book which I feel sure you will find truly "A Guide to the Best Plants, Shrubs and Trees that Grow." We have tried to make all descriptions as accurate and clear as possible, avoiding technical terms that mean nothing to you, have put in as many pictures as there was room for and have added many new illustrations in natural color. To make it easy for you to make suitable selections, we have grouped on page 2 a few kinds for various purposes and locations. Other suggestions will be found throughout the book.

To those of you who have planted Woodlawn stock, I need not say that there is none better anywhere at any price. Many years ago I decided that the only satisfactory stock for my customers was the best that can be grown. For over half a century it has been my steadfast purpose to produce only the best. This year I am especially proud of the quality of the trees, plants and shrubs that have been grown in our nurseries. Never before has stock made such vigorous, sturdy growth and developed such splendid root systems. I am glad, too, that we are able to keep our prices, as always, surprisingly reasonable.

Our facilities for caring for any orders you send us are unexcelled. Our packing cellar where your orders are filled, covers over an acre of ground and is especially constructed to protect all stock from sun and wind until it is shipped. Each order is carefully packed so that it will reach you fresh and full of life.

I hope you will make good use of this book and if I can be of special assistance to you in any way let me know. Index is on the opposite page. An order blank will be found in the back of the book.

Allen L. Wood



PARTIAL VIEW OF OUR PACKING CELLAR—WITH A GLIMPSE OF ONE OF OUR NURSERIES IN THE BACKGROUND

It is Easy to Order

Just fill in the enclosed order blank in the back of this book, being particular to specify just what is wanted. Your name, postoffice and shipping point should be written plainly to avoid mistakes. If in doubt as to whether your stock should go forward by express or freight, leave it to us and we will use our best judgment. Prices are F.O.B. Rochester, except as noted. No charge for packing.

TERMS—Cash with order. We ship C.O.D. if 25% of the total amount of your order is sent in advance.

HOW TO REMIT—Preferably by check, postoffice money order, express money order, draft or registered letter.

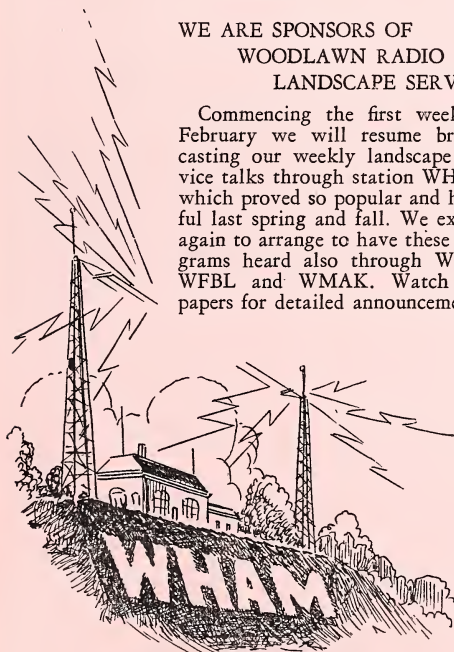
RATES—Five or more at ten rate. Fifty or more at hundred rate. Four hundred or more at thousand rate.

PARCEL POST—Is often cheaper and more convenient than express for small packages. At mail prices shown in this catalog we prepay postage up to and including the fourth parcel post zone. To points beyond the additional postage will be collected on delivery. Your postmaster can tell you what zone you are in from Rochester.

SHIPPING SEASONS—In the spring, for this locality, usually from about March 1st to May 15th. To Southern points we commence shipping in January. In the fall from about October 15th until the ground freezes. We advise spring planting for Berry plants, Peach trees and Evergreens.

WE ARE SPONSORS OF WOODLAWN RADIO LANDSCAPE SERVICE

Commencing the first week in February we will resume broadcasting our weekly landscape service talks through station WHAM which proved so popular and helpful last spring and fall. We expect again to arrange to have these programs heard also through WGY, WFBL and WMAK. Watch the papers for detailed announcements.



CERTIFICATE—No. 18

State of New York
DEPARTMENT OF FARMS
AND MARKETS

BERNE A. PYRKE, *Commissioner*
CERTIFICATE OF INSPECTION OF
NURSERY STOCK

This is to Certify that the nursery stock of Allen L. Wood of Rochester, County of Monroe, State of New York, was duly examined in compliance with the provisions of Article 14 of the Farms and Markets Law, and was found to be apparently free from any contagious or infectious disease or diseases, or the San Jose scale or other dangerously injurious insect pest or pests. This certificate expires September 1, 1929.

Dated, Albany, N. Y.
September 1, 1928.

BERNE A. PYRKE,
Commissioner.

By GEORGE G. ATWOOD,
Director, Bureau of Plant Industry.

INDEX

	<i>Page</i>
Apples, Standard, Dwarf and Crab	41-44
Apricot Trees	40
Asparagus Roots	48
Berries	47-48
Cherries, Sour and Sweet	36-37
Dahlia Bulbs	29-31
Evergreens	20-22
Fertilizer	Back cover
Gladiolus Bulbs	28-30
Grape Vines	50
Grass Seed Mixtures	Back cover
Hedge Plants	12
Insecticides and Fungicides	49
Miscellaneous Items	49
Nut Trees	13-14
Ornamental Trees	15-19
Peach Trees	38, 39, 46
Pears, Standard and Dwarf	45-46
Peat Moss	49
Perennial Plants	32-35
Planting Suggestions	2
Plum Trees	40
Pruning Saws	49
Quince Trees	44
Rhubarb Roots	48
Roses, Bush and Climbing	23-28
Shrubs	3-9
Tree Protectors	49
Trees, Evergreen	20-22
Trees, Fruit	36-46
Trees, Nur	13-14
Trees, Ornamental	15-19
Vines, Hardy Ornamental	10-11
Vines, Grape	50

SPECIAL DISCOUNT ON EARLY ORDERS

10% discount on all orders accompanied by remittance received on or before March 1, 1929; 5% discount between March 1st and April 1st, 1929.

PLANTING SUGGESTIONS

Especially for the Inexperienced

ORNAMENTAL planting of shrubs, trees, evergreens, perennial plants, etc., around one's home is what makes a house a real home. In fact, "It's not a home until it's planted." No other investment you can possibly make will pay such rich dividends in beauty, satisfaction and a largely increased money value to your property. Upon examining the pages of this book, you will be delightfully surprised at how much you can accomplish with only a slight investment of money. You will find it a fascinating pastime to select from the hundreds of desirable varieties described and illustrated here those kinds best suited for your particular location and your special needs. In order to make it easy for you to make suitable selections, we have grouped together on this page a few kinds especially useful for various purposes and have indicated the pages in the book where you will find them fully described and many illustrated. These lists are not intended to be complete but merely helpful suggestions especially for inexperienced gardeners.

The first thing that will require your attention in beautifying your home surroundings is to provide a foundation planting to break the harsh, cold line between the house and the ground. In planning your planting place the taller-growing varieties to the rear and the lower-growing kinds in front. Give the taller-growing kinds more room and plant them farther apart.

By noting the time of bloom and prevailing colors of flowers, leaves or fruit you can select an assortment that will make a harmonious display from early to late.

If in doubt just what to use and where, make a rough pencil layout giving dimensions, location of buildings, walks, driveways and direction and send it to our landscape department and we will make a suggestive planting plan for you.

In the tables below fl. stands for flowers; lvs. means leaves or foliage; var. col. means various colors; var. lvs. means variegated leaves.

FOR FOUNDATION AND BORDER PLANTING

TALL GROWING (Set about 4 ft. apart)	Time of Bloom	Flowers, Leaves or Fruit	Page
Altheas	Aug.-Sep.	Var. col. fl.	4
Cornus, Sibirica	May	Red stems	4
*Deutzia, P. of R.	May-June	White fl.	9
Deutzia, Crenata	May	Pink fl.	9
*Syringa, Grand.	June	White fl.	9
*Syringa, Cor.	May	White fl.	9
Forsythia	April	Yellow fl.	6
*Honeysuckle, Bush	May-July	Var. col. fl.	5
Weigela, Rosea	June	Rose fl.	6
High Bush Cranberry	May-June	Red berries	4
Sumach	June-July	Lvs. red in fall	6
*Snowball, Common	June	White fl.	9
Weigela, Candida	June	White fl.	6
Golden Elder	June-July	Yellow lvs.	4
Lilacs	May-June	Var. col. fl.	5

MEDIUM HEIGHT (Set 3-4 ft. apart)	Time of Bloom	Flowers, Leaves or Fruit	Page
*Hydrangea, Arb.	June-July	White fl.	6
Hydrangea, P. G.	July-Oct.	Pink fl.	6
*Cornus, Eleg.	May	Var. lvs.	4
Weigela, Var.	June	Var. lvs.	6
Weigela, Eva Rathke	June-Aug.	Red fl.	6
*Spirea, Van Houttei	May-June	White fl.	8
Spirea, Prun.	May	White fl.	8
Spirea, Billardi	July-Aug.	Rose fl.	8
*Syringa, Virginalis	June-Sep.	White fl.	9
*Snowberries, White		White berries	3
*Snowberries, Red		Red berries	4
Kerria, Japonica	June-Sep.	Yellow fl.	4

LOW GROWING (Set 2-3 ft. apart)	Time of Bloom	Flowers, Leaves or Fruit	Page
*Deutzia, Gracilis	May	White fl.	9
Deutzia, Lemoinei	May	White fl.	9
*Barberry, Thun.		Red berries	3
Barberry, Red		Bronze red lvs.	3
Spirea, A. W.	July-Aug.	Red fl.	8
Spirea, Callosa	June-Aug.	White fl.	8
Spirea, Bumalda	May	Pink fl.	8
Spirea, Thun.	May	White fl.	8
Stephanandra	June	White fl.	6
*Syringa, Golden	June	Yellow lvs.	9

All above are suitable for sunny exposures. Varieties marked * also suitable for shady exposure.

VALUABLE FOR GROUPS OR MASSING

	Page		Page
Butterfly Bush.....	3	Cornus.....	4
Spirea Van Houttei.....	8	Hydrangea.....	6
Japan Quince.....	6	Snowberries.....	3
Lilac.....	5	Deutzias.....	9
Althea.....	4	Junipers.....	21

ESPECIALLY USEFUL AS SINGLE SPECIMENS

	Page		Page
Flowering Almond....	4	Colorado Blue Spruce..	21
Althea.....	4	Norway Spruce.....	21
Sumach.....	6	Pyr. Arbor Vitae....	22
Lilacs.....	5	Purple-leaved Plum..	18
Paul's Flowering Thorn.....	19	Japan Weep'g Cherry	18
Flowering Crabs.....	19	Tea's Weeping Mulberry.....	17

FOR BINDING AND COVERING STEEP BANKS

	Page		Page
Honeysuckle, Hall's		Snowberries.....	3
Japan.....	10	Coralberry.....	4
Aralia, Pentphylla...	4	Honeysuckle Bush...	5
Bittersweet.....	10	Barberry, Thun.....	3
Rugosa Roses.....	28		

SHRUBS

WITHOUT shrubbery, a house, no matter how expensively built, seems stark and bare like a factory building. When tastefully planted with shrubs, it becomes cozy, warm and inviting as if it grew out of the soil on which it stands. The humblest cottage is glorified and the largest mansion is made homelike.

In fact, nowadays, proper planting and landscaping around the exterior is considered as important as suitable furnishings and decorations on the interior and incidentally adds hundreds of dollars to the value of the property.

By careful selection of varieties, you can have something in bloom throughout the growing season. The classified list on the opposite page will help you. Woodlawn shrubs are all strong, well-rooted stock transplanted from open ground.

By mail add 5c per plant extra



NEW RED-LEAVED BARBERRY

This new Barberry is very unusual and different from any shrub developed in many years. Its foliage is a rich, lustrous, bronzy-red. It resembles the Barberry Thunbergi in all respects except color. Full exposure to the sun is absolutely necessary to make the coloring become intense and brilliant as the summer advances.

10 to 15 in., 85c each; \$7.50 per dozen

BARBERRY THUNBERGI (JAPANESE)—Excellent in front of taller shrubs. The fall colorings are splendid. See description, page 12.

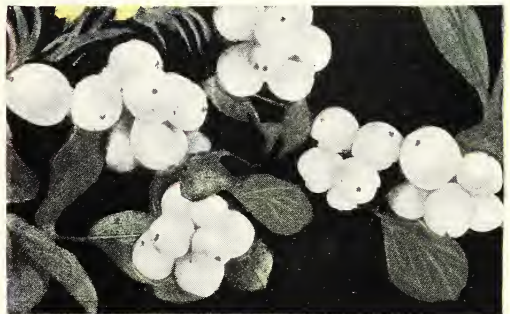
18 to 24 in., 30c each; 10 for \$2.50
2 to 3 ft., 40c each; 10 for \$3.00



EVERBLOOMING BUTTERFLY BUSH

BUTTERFLY BUSH or SUMMER LILAC (E)—This beautiful shrub matures rapidly and produces beautiful lilac-colored flowers in profusion. Blossoms the entire summer; splendid for cutting. Should be cut back to ground every spring.

50c each; 10 for \$4.00



SNOWBERRY WHITE

SNOWBERRY, WHITE (E)—Bushy form, small pink flowers in summer; quantities of large, white, waxy, roundish berries in autumn that remain on the plant through part of the winter.

3 to 4 ft., 50c each; 10 for \$4.50
2 to 3 ft., 40c each; 10 for \$3.75

D—Denotes shrubs which attain height of 9 to 12 ft.;
E—5 to 8 ft.; *F*—2 to 4 ft.

SNOWBERRY, RED (CORALBERRY) (E)—Low growing, spreading, graceful habit; foliage attractive, noteworthy for the beauty of its clusters of red berries which hang on the bush all winter.

3 ft., 50c each; 10 for \$4.50

FLOWERING ALMOND (E)—Flowering shrub, vigorous and beautiful; covered in May with double pink blossoms, like small Roses, before the leaves appear.

2½ to 3 ft., \$1.00 each

ARALIA PENTAPHYLLA (E)—Pretty Japanese shrub. Branches long and slender, foliage bright green, flowers white. Grows rapidly.

2 to 3 ft., 50c each

KERRIA, JAPONICA (F)—A green branched, slender, graceful shrub, with drooping branches, rich, dark yellow flowers which bloom all summer.

2 to 3 ft., 50c each; 10 for \$4.50



CORNUS ELEGANTISSIMA

CORNUS ELEGANTISSIMA (Variegated Leaf) (E)—One of the finest shrubs, with beautifully variegated foliage. Small white flowers.

2 to 3 ft., 65c each; 10 for \$5.50

CORNUS SIBIRICA (E)—(Red-twigged Dogwood). With small clusters of white flowers; its berries and its dark red bark make it a very attractive shrub.

3 ft., 50c each; 10 for \$4.50



ALTHEA—ROSE OF SHARON

ALTHEA, or ROSE OF SHARON (D)—The Altheas are fine, free growing, flowering shrubs and are easy to cultivate. Very desirable on account of blooming in August and September, when scarcely any other tree or shrub is in blossom. We have the following varieties:

LADY STANLEY (Double Pink)

ARDENS (Double Purple)

BOULE DE FEU (Double Red)

JEANNE D'ARC (Double White)

2 to 3 ft., 50c each; 5 for \$2.00

TREE ALTHEA (D)—Same as bush, but grown in tree form, with single stem. Colors: Pink, Red, Purple and White.

3 to 4 ft., \$1.00 each



GOLDEN ELDER

ELDER, GOLDEN LEAVED (E)—A handsome variety, with golden-yellow foliage. White flowers. The berries are used for pies, jam and wine.

3 ft., 50c each; 10 for \$4.50

HIGH BUSH CRANBERRY (E)—Very ornamental. Its red berries resemble cranberries, which hang on until destroyed by frost.

2 to 3 ft., 50c each; 10 for \$4.50

D—Denotes shrubs which attain height of 9 to 12 ft.; E—5 to 8 ft.; F—2 to 4 ft.



HONEYSUCKLE, UPRIGHT, WHITE

BUSH HONEYSUCKLES

HONEYSUCKLE, UPRIGHT, WHITE (E)—A well known shrub of erect habit. Valuable for its handsome flowers and showy fruit. Delightfully fragrant. One spray will fill a room with its delicate perfume. 3 to 4 ft., 50c each; 10 for \$4.50

HONEYSUCKLE, UPRIGHT ROSEA (E)—A beautiful shrub; vigorous; producing large, bright red flowers, striped with white. 3 to 4 ft., 50c each; 10 for \$4.50

HONEYSUCKLE, UPRIGHT PINK (E)—Has flowers which contrast beautifully with the foliage. Looks very pretty planted with the white and red varieties. 3 to 4 ft., 50c each; 10 for \$4.50

HONEYSUCKLE, MORROWI (E)—(JAPANESE BUSH HONEYSUCKLE)—A spreading variety which blooms early, pure white flowers; followed by pretty red berries. 3 ft., 50c each; 10 for \$4.50

LILACS

IN recent years great improvements have been made in varieties of Lilacs. Many new delightful colors are now available for you. We have selected some of the finest from the world famous Highland Park Collection.

HIGHLAND PARK VARIETIES

FRENCH BUDDED LILACS

LUDWIG SPAETH (E)—Darkest of the blues, a deep rich reddish purple shade—borne in long panicles; single. 18 to 24 in., \$1.00 each

MISS STEPMAN (E)—Splendid double white of vigorous habit. 2 to 3 ft., \$1.00 each

MICHAEL BUCHNER (E)—Delightfully beautiful trusses of delicate pale lilac; very double. Dwarf and stocky. 2 to 3 ft., \$1.00 each

PRESIDENT GREVY (E)—Large double flowers of bright blue; tube and scapes rosy mauve. 2 to 3 ft., \$1.00 each

MARIE LA GRAYE (E)—Tall growing, vigorous plants bearing large clusters of single white flowers. Fragrant. 2 to 3 ft., \$1.00 each

PRESIDENT VIGER (E)—Lovely bluish lilac; extra fine; large double. 2 to 3 ft., \$1.00 each

LAMARCK (E)—Large very double flowers of rosy lilac color in extra large panicles. 2 to 3 ft., \$1.00 each

CONGO (E)—Beautiful rich wine red. Very large single flowers in huge clusters. 2 to 3 ft., \$1.25 each

COMMON VARIETIES

PURPLE LILAC (E)—The well known, old time favorite; bluish purple flowers. 3 to 4 ft., 65c each; 10 for \$6.00

WHITE LILAC (E)—Fragrant and free flowering. Always popular. 3 ft., 75c each; 10 for \$6.50

The lilacs were just lovely bushes. I am surprised and delighted with every order I receive from the Woodlawn Nurseries. I did not expect such large bushes. Your prices are so reasonable.

Mrs. Elroy Smith.

Stamford, Conn.
May 9, 1928



A FINE BLOCK OF BUTTERFLY BUSH ON OUR VALLEY FARM—PRIVET IN FOREGROUND. (See page 3)

D—Denotes shrubs which attain height of 9 to 12 ft.; *E*—5 to 8 ft.; *F*—2 to 4 ft.



HYDRANGEA ARBORESCENS

HYDRANGEA, ARBORESCENS (HILLS OF SNOW) (E)—The blooms, borne in clusters, are large; snowy-white color. Foliage is finely finished. One of the finest Hydrangeas.

2 to 3 ft., 50c each; 10 for \$4.50

HYDRANGEA, P. G. (E)—One of the most popular hardy shrubs, and also one of the finest flowering varieties. The immense heads of bloom are cream-color in bud, pure white when fully expanded, changing to pink and bronze with age, and finally to brown when frosted. Blooms in September, when very few shrubs are in flower. See illustration on opposite page.

2 to 3 ft., 50c each; 10 for \$4.50

HYDRANGEA, P. G., TREE FORM (E)—Same as bush, but grown in tree form with single stem.

2 to 3 ft., \$1.00; 3 to 4 ft., \$1.50
4 to 5 ft., \$2.00

STEPHANANDRA FLEXUOSA (F)—Very desirable dwarf shrub that should be used more extensively. Branches angular, even zig-zagged, with handsome deep lobed foliage which colors to purplish red; and paniced racemes of white flowers in June.

3 ft., 60c each; 10 for \$5.00

QUINCE, JAPAN (E)—Dark green foliage and showy deep scarlet flowers of good size, produced singly or in masses. Much admired and often used for hedges.

2 to 3 ft., 85c each; 10 for \$7.50

CUT-LEAVED SUMACH (E)—A very striking plant, of moderate size, with deeply cut leaves, resembling fern leaves; dark green above and glaucous below, and turning to a rich red in autumn. Especially beautiful in mixed evergreen planting.

3 to 4 ft., 60c each; 10 for \$5.00

FORSYTHIAS

FORSYTHIA FORTUNEI (E)—Early and showy spring bloomer; flowers bright yellow, appearing before leaves. See picture on opposite page.

3 to 4 ft., 50c each; 10 for \$4.50

FORSYTHIA SUSPENS A (E)—Flowers resemble Fortunei, growth drooping.

3 to 4 ft., 50c each; 10 for \$4.50

WEIGELAS (Diervilla)

WEIGELA ROSEA (E)—An elegant strong growing shrub, with fine trumpet-shaped, rose-colored flowers; of erect, compact growth; blossoms in June. See illustration on opposite page.

3 to 4 ft., 50c each; 10 for \$4.00

WEIGELA CANDIDA (E)—Flowers pure white and produced in great profusion in June, blossoms through the summer; valuable variety.

3 ft., 50c each; 10 for \$4.50

WEIGELA, VARIEGATED (F)—Of dwarf habit, finely variegated foliage which lasts the entire season; contrasts nicely with its rose-colored flowers. One of the best.

18 to 24 in., 75c each; 10 for \$6.50

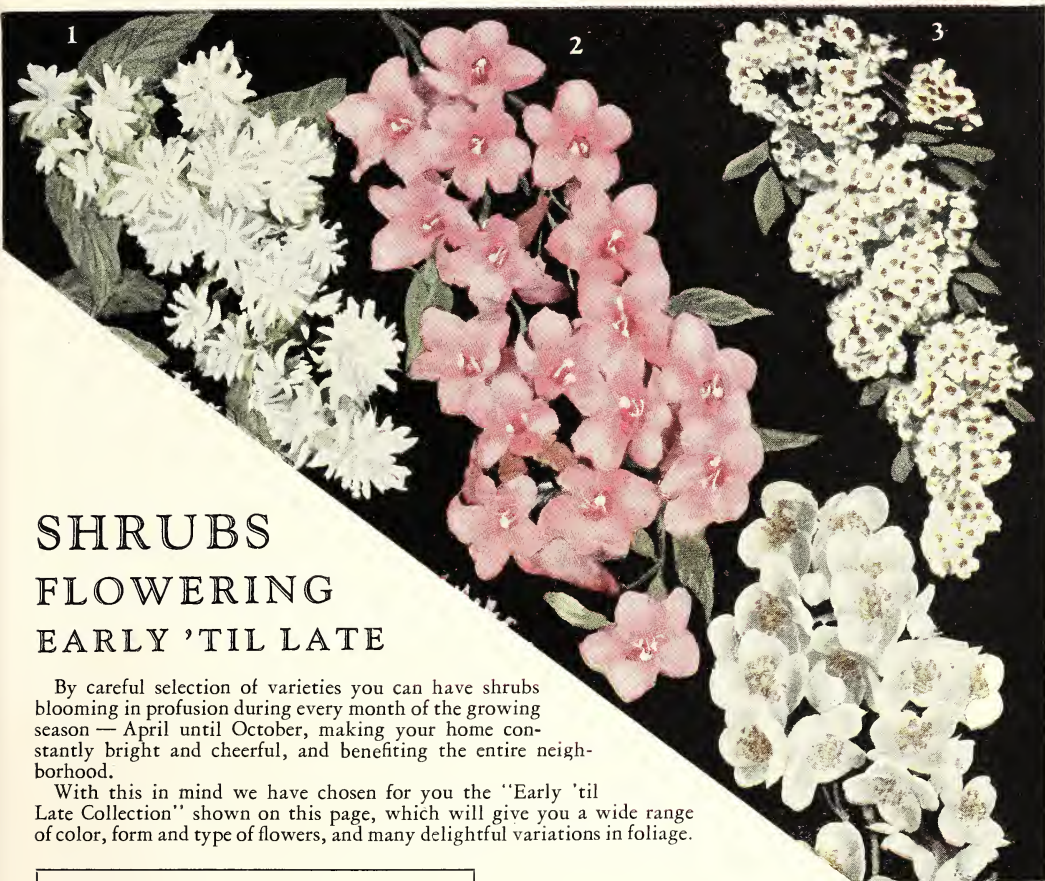


WEIGELA EVA RATHKE

WEIGELA, EVA RATHKE (F)—Flowers brilliant crimson. A very attractive variety of dwarf habit. Almost a continuous bloomer.

18 to 24 in., 75c each; 10 for \$6.50

D—Denotes shrubs which attain height of 9 to 12 ft.; E—5 to 8 ft.; F—2 to 4 ft.



SHRUBS FLOWERING EARLY 'TIL LATE

By careful selection of varieties you can have shrubs blooming in profusion during every month of the growing season — April until October, making your home constantly bright and cheerful, and benefiting the entire neighborhood.

With this in mind we have chosen for you the "Early 'til Late Collection" shown on this page, which will give you a wide range of color, form and type of flowers, and many delightful variations in foliage.

EARLY 'TIL LATE COLLECTION

Deutzia, Pride of Roch.	Syringa
Weigela, Rosa	Forsythia
Spiraea, Van Houttei	Spiraea, A. W.
Hydrangea, P. G.	

By express **\$3.00**. By mail postpaid **\$3.25**

- 1—DEUTZIA, PRIDE OF ROCHESTER. Blooms in May. Description on page 9.
- 2—WEIGELA ROSEA. Blooms in June. Description on opposite page
- 3—SPIREA VAN HOUTTEI. Blooms in May and June. Description on page 8.
- 4—SYRINGA, MOCK ORANGE. Blooms May and June. Description on page 9.



FORSYTHIA
Blooms in April
Description opposite page



SPIREA ANTHONY WATERER
Blooms July-Aug.
Description on page 8



HYDRANGEA P. G.
Blooms July-Oct.
Description opposite page



SPIREA VAN HOUTTEI—THE MOST POPULAR FLOWERING SHRUB

SPIREAS

SPIREAS bloom with a riotous extravagance which makes them quite striking. Their individual style, color and habits of growth differ so markedly that a collection of varieties will insure bloom the entire season.

SPIREA VAN HOUTTEI

Without doubt the finest spring flowering shrub. In May and June the plant is covered with a mass of white flowers on every branch, drooping gracefully to the ground. Even when not in bloom, the foliage is very ornamental. See front cover and page 7 for pictures in color. Our plants made marvelous growth this year and we are glad to give you the advantage of these

SPECIAL PRICES

2 to 3 ft., 35c each; 10 for \$3.25
 3 to 4 ft., 40c each; 10 for \$3.75
 4 to 5 ft., 50c each; 10 for \$4.50

SPIREA, ANTHONY WATERER (F)—A dwarf variety of great beauty. Its broad, flat heads of red flowers continue all summer. See page 7 for illustration. 15 to 18 in., 50c each; 10 for \$4.50

SPIREA, AUREA (GOLDEN) (E)—Foliage green bordered with rich golden yellow. In June the branches are covered with double white flowers. Very conspicuous. 3 to 4 ft., 50c each; 10 for \$4.50

SPIREA, BILLARDI (E)—Rose-colored flowers in spikes; blooms nearly all summer. 3 to 4 ft., 50c each; 10 for \$4.50

SPIREA BUMALDA (F)—A low growing bush with dark leaves. Blooms early in May. Flowers a delicate pink. Very desirable. 15 to 18 in., 50c each; 10 for \$4.50

SPIREA, CALLOSA ALBA (F)—Valuable dwarf variety; bears white flowers all summer. 15 to 18 in., 50c each; 10 for \$4.50

SPIREA SORBIFOLIA (E)—Strong growing variety from Siberia, leaves similar to Mountain Ash, with long feathery spikes of white flowers in July and August. Strikingly handsome and distinct from all others. 2 to 3 ft., 50c each; 10 for \$4.50

SPIREA THUNBERGI (F)—Fine, feathery foliage, yellowish-green, changing in autumn to bright red and orange. Flowers pure white, borne in feathery masses in early spring. 2 to 3 ft., 50c each; 10 for \$4.50



SPIREA PRUNIFOLIA

SPIREA PRUNIFOLIA (BRIDAL WREATH) (E)—A superb old-fashioned variety, with graceful, upright, slender branches covered with a wreath of double white flowers in May. 2 to 3 ft., 50c each; 10 for \$4.50

D—Denotes shrubs which attain height of 9 to 12 ft.; *E*—5 to 8 ft.; *F*—2 to 4 ft.

DEUTZIAS

DEUTZIA, PRIDE OF ROCHESTER (E)—Very large, double, white flowers tinged with pink in May and June. It excels in size of flower, profuse bloom and vigorous growth. The best of the Deutzias. See picture in color on page 7.

3 ft., 50c each; 10 for \$4.50

DEUTZIA, GRACILIS (F)—Charming species of dwarf habit; flowers pure white in great profusion. Fine for growing in front of taller shrubs.

12 to 15 in., 50c each; 10 for \$4.50

DEUTZIA, CRENATA—A tall growing variety having very double pink flowers.

3 to 4 ft., 50c each; 10 for \$4.50

DEUTZIA, CANDIDA (E)—Pure white flowers, very double, which are so perfect in shape they are frequently used as cut flowers.

2 to 3 ft., 50c each; 10 for \$4.50

DEUTZIA, LEMOINEI (F)—Pure white flowers, borne in profusion on stout branches of upright growth. Dwarf habit, free flowering.

2 to 3 ft., 50c each; 10 for \$4.50



JAPAN SNOWBALL

SNOWBALL, JAPAN (*Viburnum Plicatum*) (E)—Erect, compact shrub, covered with large balls of snow white flowers in June. Very handsome dark green foliage. 2 to 3 ft., \$1.25 each; 10 for \$10.00

SNOWBALL, COMMON (D)—A well known favorite shrub producing its snowy-white flowers in large balls in June.

2 to 3 ft., 75c each; 10 for \$6.50



NEW PHILADELPHUS VIRGINALIS

Showing row in our nursery and close view of the beautiful double flowers

SYRINGAS

Philadelphus or Mock Orange

NEW PHILADELPHUS VIRGINALIS (E)—This magnificent new variety is the most beautiful and shapely of the mock oranges. The sweetly scented clusters of pure white blooms are double and unusually large. Foliage is good and of compact habit. Blossoms in June and continues until fall.

3 to 4 ft., 85c each

SYRINGA, GOLDEN (F)—Golden-yellow foliage, keeping its color the entire season.

18 to 24 in., 75c each; 10 for \$6.00

SYRINGA CORONARIUS (E)—Well-known old-fashioned shrub with pure white, highly-scented flowers; blooms among the earliest of the family. See picture in color on page 7. 3 to 4 ft., 50c each

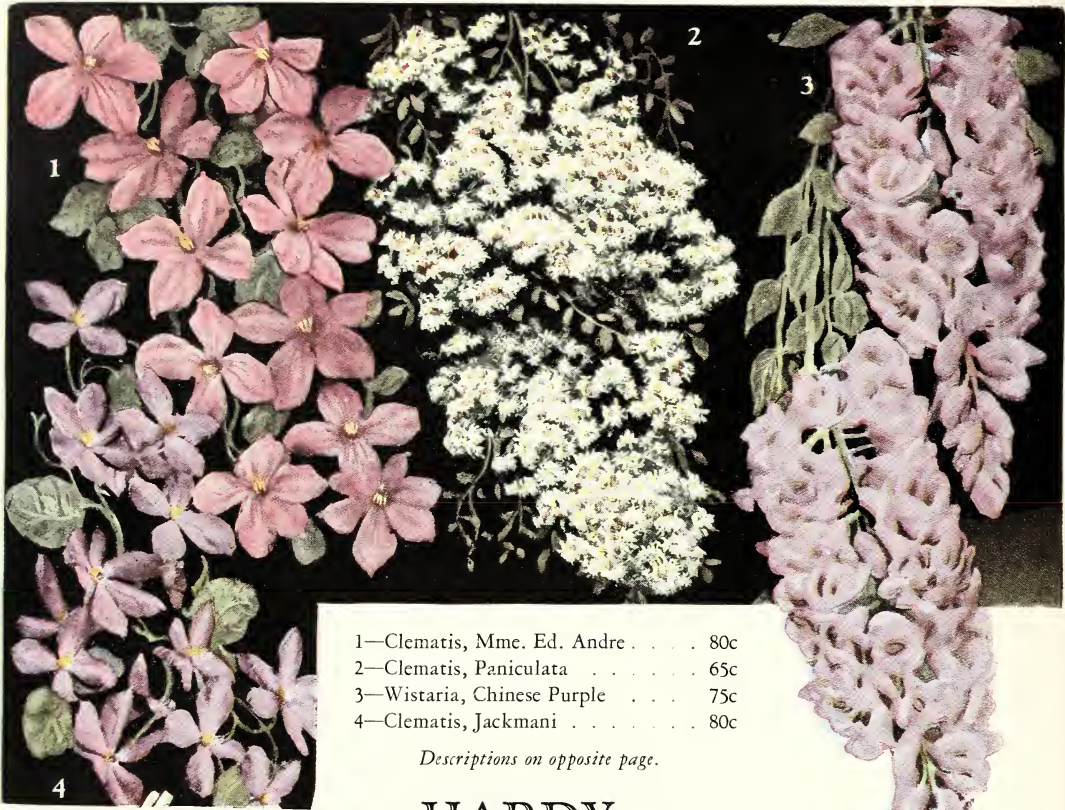
SYRINGA GRANDIFLORUS (D)—Large showy white flowers, slightly fragrant. Branches somewhat straggling.

2 to 3 ft., 50c each; 10 for \$4.50

WOODLAWN DELIGHT

Special Shrub Collection

- 2 Deutzia, Pr. of Roch. 2 Hydrangea P. G.
- 2 Butterfly Bushes 4 Japanese Barberry
- 4 Spirea Van Houttei
- 14 Choice Shrubs—\$5.00 by Express



- 1—Clematis, Mme. Ed. Andre 80c
- 2—Clematis, Paniculata 65c
- 3—Wistaria, Chinese Purple 75c
- 4—Clematis, Jackmani 80c

Descriptions on opposite page.

HARDY VINES

VINES, particularly these hardy ornamental varieties, require practically no care or attention. They serve not only as a charming beautiful decoration but are also used to provide much needed shade. Vines may often change the appearance of an unbroken wall or liven up and beautify an otherwise monotonous or unsightly spot. Our vines are all two years old, well-rooted, strong quality stock.

Woodlawn Quality Vines are the best and strongest you can buy. Price by mail 5 cents per plant extra.

SPECIAL HARDY VINE COLLECTION

The six select varieties illustrated on this page

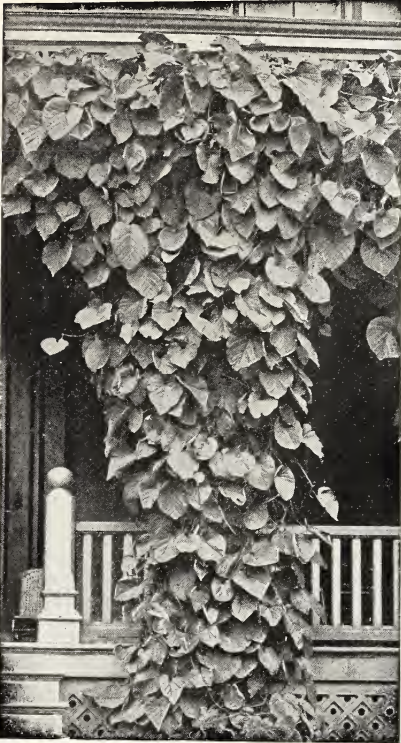
By Express **\$3.50**
By Mail **3.75**



BITTERSWEET BERRIES



HALL'S JAPAN HONEYSUCKLE



DUTCHMAN'S PIPE—BIRTHWORT

DUTCHMAN'S PIPE or **BIRTHWORT**—A very striking unique vine, ideal where dense shade is wanted. The large, broad, deep green leaves are closely and evenly laid and very handsome. Has peculiar brownish flowers, resembling miniature pipes. Perfectly hardy; very easily grown.

\$1.00 each

CLEMATIS, MME. ED. ANDRE—Flowers medium size; dark red; blooms profusely; a beautiful vine of striking color. Illustrated on opposite page (1).

80c each

CLEMATIS, PANICULATA—Single, white. Of extremely rapid growth, with shining green foliage, and a profusion of flowers which are small but borne in large clusters so that the vine is one mass of bloom; very popular; has delightful fragrance. Illustrated on opposite page (2).

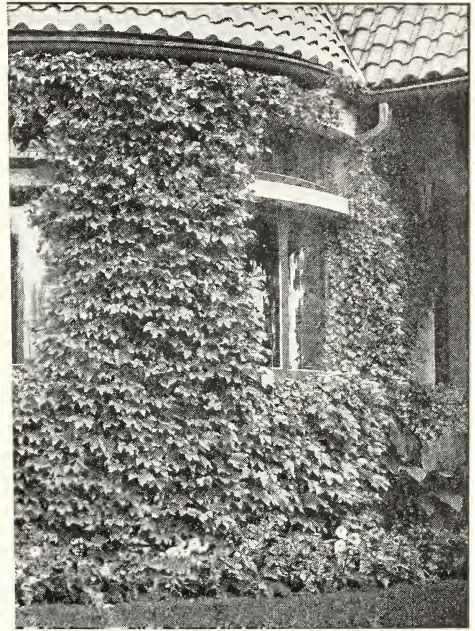
65c each

WISTARIA, CHINESE PURPLE—A rapid grower, unsurpassed for beauty and picturesqueness. It is hardy and lives to a great age, doing as well in cities amid unfavorable conditions as in the country. Has long, pendulous clusters of pale lilac flowers in May and June. Illustrated on opposite page (3).

75c each; 10 for \$6.50

CLEMATIS, JACKMANI—Large, intense violet purple flowers and remarkable for its velvety richness; free in growth and abundant and successive bloomer. Probably the best known and most popular of the large-flowered kinds. Pictured in color on opposite page (4).

80c each



BOSTON IVY, AMPELOPSIS VEITCHI

AMPELOPSIS VEITCHI (BOSTON IVY)—Desirable vine for covering walls, verandas and tree trunks. Leaves beautiful in summer, turning a rich crimson in autumn. Only vine that will cling to brick or cement wall. Fast grower.

75c each; 10 for \$6.00

BITTERSWEET—A hardy and very desirable native vine with handsome foliage, yellow flowers, followed in autumn by clusters of brilliant red berries with orange capsules that make charming and lasting winter house decorations. A fast grower useful for binding and covering steep banks. Illustrated on opposite page.

75c each

HONEYSUCKLE, HALL'S JAPAN—A strong, vigorous, almost evergreen sort, with pure white flowers, changing to yellow. Very fragrant. Covered with flowers from July to December; holds its leaves until January. Best bloomer of all vines. One of the best plants for covering and binding steep banks. Flowers in shady places. See illustration on opposite page.

50c each; 10 for \$4.50

CLEMATIS, HENRYI—The finest large-flowered white Clematis. The fine large flowers are about the shape of the red Mme. Ed Andre pictured on opposite page (1) but usually have six to eight petals; grows rapidly; blooms freely during summer and autumn.

80c each

VIRGINIA CREEPER, AMERICAN IVY—A fine rich green in summer, changing to crimson in autumn. Affords shade quickly and is very desirable for covering walls, verandas or trunks of trees.

50c each; 10 for \$4.00

HEDGE PLANTS

NOT many years ago the only hedges to be seen were those used for defense or defining boundaries, but today they are planted extensively for ornament. Many beautiful effects are now possible, and it is needless to say that these fences of living green beautify our homes and are rapidly supplanting the old-fashioned picket and iron fences. The most widely planted hedges are the California Privet and Barberry Thunbergi, shown below. Other shrubs that make good hedges include Spirea Van Houttei, shown on page 8, Snowberries, pages 3 and 4, Bush Honeysuckle, page 5, Hydrangeas, page 6.



HEDGE OF BARBERRY THUNBERGI (JAPANESE BARBERRY)

BARBERRY THUNBERGI—Dwarf growing; foliage rich, bright green; brilliant red color in Autumn. Red berries also appear at that time. Perfectly hardy, easily transplanted and free from insects. Very ornamental and as attractive in winter as in summer.

SPECIAL PRICES

	<i>Each</i>	<i>Ten</i>	<i>Hundred</i>
15 to 18 in., 2 years, Extra...	\$.20	\$1.50	\$10.00
18 to 24 in., 3 years, Extra...	.30	2.50	15.00
2 to 3 ft., 3 years, Extra...	.40	3.00	20.00



CALIFORNIA PRIVET HEDGE

CALIFORNIA PRIVET—A rapid and vigorous grower. It has handsome, glossy, oval-shaped leaves which remain well into the winter. Very popular for ornamental hedges. Can be trimmed to any desired shape or height. Extra well-branched.

SPECIAL PRICES

	<i>Each</i>	<i>Ten</i>	<i>Hundred</i>
12 to 18 in., 2 years.....	\$.10	\$.75	\$ 4.00
18 to 24 in., 2 years.....	.15	1.00	6.00
2 to 3 ft., 2 years.....	.20	1.25	8.00
3 to 4 ft., 2 years.....	.25	1.50	10.00

ENGLISH WALNUT TREES

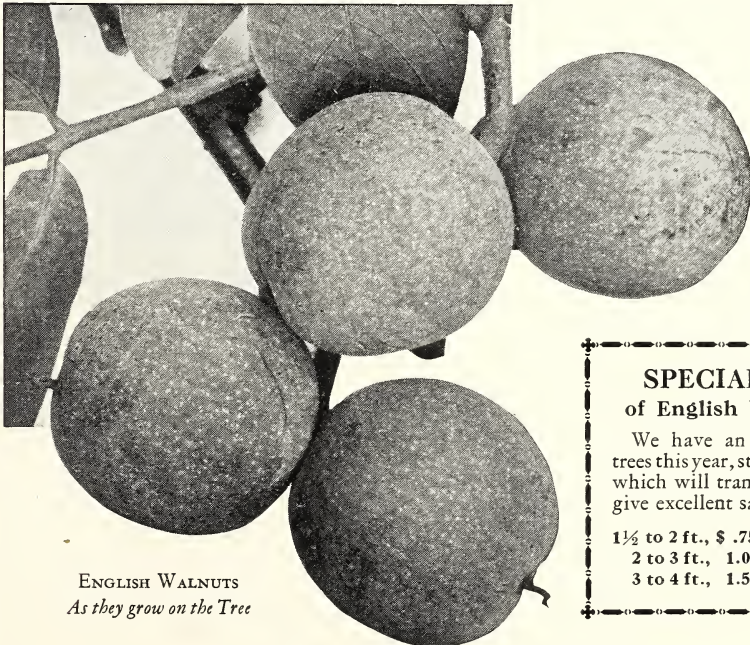
For Beauty and Usefulness

ENGLISH WALNUT—An exceedingly handsome and shapely tree for the lawn. In addition to its value as an ornament, it produces large crops of thin shelled, delicious nuts which are greatly relished and always in demand at good prices. Our English Walnuts are New York State grown, especially acclimated to climates such as we have here, and can be grown successfully in Eastern and Northern States as well as in California and the South. There are several large, commercial orchards of English Walnuts in the vicinity of Rochester which produce good profitable crops every season. We have three English Walnut trees on one of our farms over 40 years old and only once during all this time was there any sign of winter killing and then it was only slight,—showing very clearly how vigorous, hardy and adaptable our stock is.

Our English Walnuts begin to bear fruit at an early age, usually when they are not more than five years old. They take comparatively little space and a few trees properly placed will bring rich dividends of delight because of their beauty and productiveness.



ENGLISH WALNUT



ENGLISH WALNUTS
As they grow on the Tree

SPECIAL PRICES of English Walnut Trees

We have an extra fine lot of trees this year, strong and vigorous, which will transplant readily and give excellent satisfaction.

1½ to 2 ft., \$.75 each; 10 for \$6.50
2 to 3 ft., 1.00 each, 10 for 8.50
3 to 4 ft., 1.50 each; 10 for 12.50



JAPAN
WALNUTS

JAPAN WALNUT—A choice improved variety; grows with great vigor, forming a handsome head without pruning; has withstood a temperature of 20 degrees below zero without injury. The shell is a little thicker than that of the English Walnut, which it resembles in a general way; kernels are meaty delicate and can be removed entirely. Tree begins to bear 2 or 3 years after planting.

2 to 3 ft., \$.75 each; 10 for \$ 6.50
3 to 4 ft., 1.25 each; 10 for 10.00



BUTTERNUT

BUTTERNUT—Produces large, handsome elongated Nuts with rich, sweet oily kernel; very nutritious. Cultivation increases the size of the Nuts. The tree grows rapidly and yields large crops in a few years.

4 to 5 ft., \$1.00 each; 10 for \$9.00



BLACK WALNUT

BLACK WALNUT—Bears a heavy crop of large round Nuts of excellent quality. They are much relished and bring a good price on the market. The tree is a rapid grower, attaining a large size and majestic form; has beautiful foliage. Very valuable for its timber, which enters largely into the manufacture of fine furniture and cabinet ware.

5 to 6 ft., \$1.00 each; 10 for \$9.00

The stock is fine and will sure prove a success as other plants received from your nursery in the past.

Yonkers, N. Y.
April 9, 1928.

Chas. H. Chevalier.

My order consisting mostly of shrubs and roses arrived promptly and in good condition. I was pleased with their vigorous appearance and planted them immediately. The shrubs, roses and chrysanthemums and paeonies are coming along nicely, some in bud at this date.

Brooklyn, N. Y.
June 4, 1928.

H. E. Schmelter.



AVENUE OF NORWAY MAPLES—WIDELY USED FOR STREET AND PARK PLANTING

ORNAMENTAL TREES

TREES are important in giving grounds that well-kept appearance which is so desirable. As in the case with flowering shrubs, vines and roses, they should be planted according to a well conceived plan. Ornamental trees may be successfully used to shut off unsightly views and yet should be placed so they will not shut off any pleasing outlook. Trees furnish shade and protection and add materially to the value of property. The original outlay of money is comparatively small and the ever-increasing pleasure and enhanced property value is great.

A—Denotes trees which attain 50-70 ft. in height.
 B—Denotes trees which attain 20-40 ft. in height.
 C—Denotes trees which attain 8-15 ft. in height.

ORIENTAL PLANE (SYCAMORE) (A)—Well known vigorous growing tree especially useful in cities where there is much smoke. Extensively used for street and park planting.

8 to 10 ft., \$2.50 each



SILVER-LEAVED MAPLE

SILVER LEAVED MAPLE (A)

The Silver Leaved or Soft Maple is one of the most beautiful ornamental trees of rapid growth; in great demand for lawn, street and park planting. Easy to transplant. Thrives anywhere. Our trees made marvelous growth last year and are the finest we ever offered.

6 to 8 ft., \$1.25 each; \$10.00 per 10
 8 to 10 ft., 1.50 each; 12.50 per 10
 10 to 12 ft., 2.00 each; 17.50 per 10
 12 to 14 ft., 1½ to 2 in. caliper, \$3.00 each
 12 to 14 ft., 2 to 2½ in. caliper, 3.50 each
 12 to 14 ft., 3 in. caliper and up, extra heavy
 \$4.00 each

MAPLE, SUGAR or ROCK (A)—Very popular American tree valuable for its production of sugar and wood. Very stately in form, rapid grower, and has fine foliage. Valuable ornamental variety. Adapts itself to any soil, but is a good tree to plant in a stiff, clay soil.

8 to 10 ft., \$2.50 each
 10 to 12 ft., 3.00 each

MAPLE, NORWAY (A)—The compact, vigorous nature of this tree renders it desirable for the street or lawn. The growth is fairly fast, the head massive and rounded, with broad, rich green foliage. See picture above.

8 to 10 ft., \$3.00 each
 10 to 12 ft., 3.50 each



WIER'S CUT-LEAVED MAPLE

MAPLE, WIER'S CUT-LEAVED (A)—One of the most remarkable and beautiful trees, with cut or dissected foliage. Growth rapid, shoots slender and drooping giving it habit almost as graceful as cut-leaved Birch.

8 to 10 ft., \$2.00 each; \$17.50 per 10
10 to 12 ft., 2.50 each; 23.00 per 10



THE STATELY AMERICAN ELM

ELM, AMERICAN (A)—The magnificent, stately elm with its towering branches spreading out at the top like a huge umbrella is one of the best known and most beautiful trees for ornamental planting.

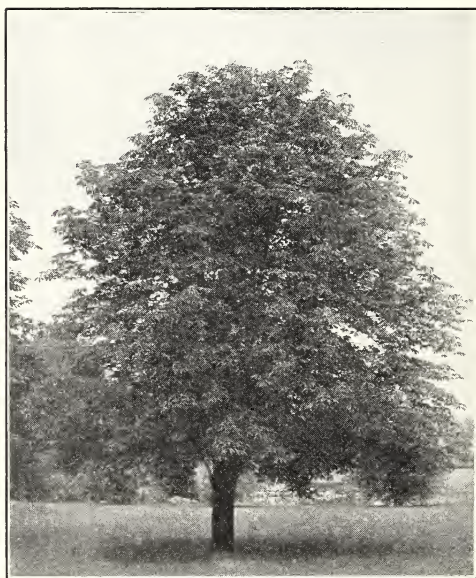
8 to 10 ft., \$2.00 each; \$17.50 per 10
10 to 12 ft., 2.50 each; 22.50 per 10



RED-LEAVED MAPLE

MAPLE, SCHWEDLERI (RED-LEAVED) (B)—A strikingly attractive tree especially in the spring when the leaves are a gleaming red. Purplish green in mid-summer, golden bronze in autumn.

8 to 10 ft., \$5.00 each



AMERICAN LINDEN OR BASSWOOD

LINDEN, AMERICAN (B)—A tree of unusual stately beauty. Foliage luxuriant and curious cream colored flowers have a delightful fragrance. Blooms in July. Growth rapid and upright.

8 to 10 ft., \$2.50 each; \$23.00 per 10



CATALPA BUNGEII—UMBRELLA TREE

CATALPA BUNGEII (UMBRELLA TREE) (C)
—Grafted on stems 5 to 6 ft. high, it makes an umbrella-shaped top without pruning; perfectly hardy. Leaves large, glossy, heart-shaped, deep green. One of the most unique trees; desirable for lawns, park and cemetery planting or for each side of a driveway.

Two-year heads, extra large, \$1.50 each; 2 for \$2.80



CATALPA SPECIOSA

CATALPA SPECIOSA (B)—Handsome, oriental appearing tree with heart-shaped, downy leaves; fragrant flowers in June, very hardy.

8 to 10 ft., \$1.50 each



WILLOW BABYLONICA

WILLOW, BABYLONICA (A)—Well known, weeping variety; forms a large, round-headed graceful tree. It does not require much attention and succeeds well in rather wet soil. Very desirable.

8 to 10 ft., \$1.75 each



TEA'S WEEPING MULBERRY

MULBERRY, TEA'S WEEPING (C)—Umbrella shaped head, with slender graceful willowly branches drooping to the ground. It has beautiful glossy foliage, handsomely cut or divided into lobes. Perfectly hardy.

Two-year heads, extra large, \$2.50 each

MULBERRY, DOWNING (B)—Very desirable, small tree bearing large black berries of excellent quality attractive to birds. 5 to 6 ft., \$1.00 each



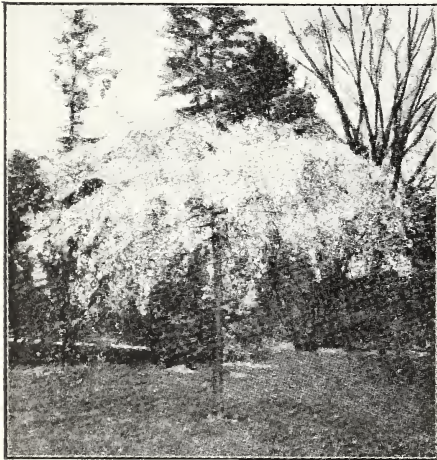
LOMBARDY POPLAR

POPLAR, LOMBARDY (A)—Admired for its erect, rapid growth and commanding form. Desirable on large grounds, along roads, as a screen or windbreak.

8 to 10 ft., \$1.25 each; \$10.00 per 10
10 to 12 ft., 1.50 each; 12.50 per 10

POPLAR, CAROLINA (A)—Very rapid grower. Useful as a screen or windbreak.

8 to 10 ft., \$1.00 each; \$ 8.50 per 10
10 to 12 ft., 1.25 each; 10.00 per 10



JAPAN WEeping ROSE FLOWERED CHERRY

JAPAN WEeping ROSE FLOWERED CHERRY (B)—Delicate pink flowers bloom in May and resemble miniature roses. The mass of bloom conceals the branches of this attractive and beautiful tree.

5 to 6 ft., stems, \$5.00 each



PURPLE LEAVED PLUM

PLUM, PURPLE LEAVED (*Prunus Pissardi*) (B)—Finest purple-leaved small tree. Young branches are very dark purple; leaves when young are lustrous crimson changing to dark purple, and retain this beautiful tint until they drop. 4 to 5 ft., \$1.00 each



BECHTEL'S DOUBLE FLOWERING CRAB

BECHTEL'S DOUBLE FLOWERING CRAB (C)—One of the most beautiful varieties of flowering crabs. See opposite page.

SPECIAL PRICES

18 to 24 in., 40c each
3 to 4 ft., \$1.00 each

2 to 3 ft., 65c each
4 to 5 ft., \$1.50 each



AMERICAN MOUNTAIN ASH

MOUNTAIN ASH, AMERICAN (B) — Erect growing tree with graceful spreading branches; bark light gray. White flowers in early spring followed by clusters of orange red berries remaining throughout the winter. A great favorite.

6 to 8 ft., \$2.00; 8 to 10 ft., \$2.50



PAUL'S DOUBLE FLOWERING THORN

PAUL'S DOUBLE FLOWERING THORN (C) — An excellent lawn specimen tree with graceful spreading, irregular branches. Blooms in May and June. Flowers are double, of a bright carmine color and are borne in great profusion. Grows in any soil.

4 to 5 ft., \$3.00 each

FLOWERING CRABS

BECHTEL'S — The most popular flowering crab. Bears large, double, fragrant flowers of delicate pink that have the appearance of roses.

18 to 24 in., \$.40 each

SPECIAL 2 to 3 ft., .65 each

PRICES 3 to 4 ft., 1.00 each

4 to 5 ft., 1.50 each

JAPANESE FLOWERING CRAB (*Floribunda*) — Handsome tree with bright rose colored flowers borne in great profusion in May. Small red fruit liked by birds.

3 to 4 ft., \$1.25; 4 to 5 ft., \$1.50

REDVEIN CRAB (*Niedzwetzkyana*) — Large red flowers, purplish foliage, red branches. Purplish edible fruit.

3 to 4 ft., \$1.50; 4 to 5 ft., \$1.75

SCHEIDECKER CRAB (*Scheideckeri*) — Small bright rose-colored flowers in great profusion.

3 to 4 ft., \$1.25; 4 to 5 ft., \$1.50

CHINESE FLOWERING CRAB (*Spectabilis*) — Semi-double, coral-red flowers, pale yellow fruit.

3 to 4 ft., \$1.25; 4 to 5 ft., \$1.50



CARMINE CRAB (*Malus Atrosanguinea*)

CARMINE CRAB (*Atrosanguinea*) — Deep purplish red buds opening to brilliant carmine. Contrasts well with other varieties. 3 to 4 ft., \$1.25; 4 to 5 ft., \$1.50



EVERGREENS

WE HAVE THE FINEST AND LARGEST COLLECTION OF CHOICE EVERGREENS IN THE COUNTRY

THERE is nothing that can quite take the place of Evergreens. In the summer their stately dignified grandeur adds serenity to the riot of colors in other vegetation, and in snowy winter their cheerful freshness gives us the comforting promise, in the bleak landscape, that spring will come again. They can be used in foundation or corner planting — as single specimens on the lawn or along the driveway — as hedges, windbreaks, and in many other delightful ways.

We have selected some of the choicest varieties and offer them here. They are the finest, strongest specimens you will find anywhere. All are specimen plants that have been transplanted several times to develop a mass of fibrous roots. They are shipped with a ball of earth around the roots tied up in burlap.



SAVIN JUNIPER

SAVIN JUNIPER—A low spreading tree, with handsome, dark green foliage. Very hardy and suitable for lawn and around porches. Can be pruned to any desired shape. 24 to 30 in., \$3.00 each

JUNIPER STRICTA—One of the leading dwarf varieties. Very dense, narrow and conical, having a fine, silvery glaucous color. Thrives in all parts of the country. See illustration at right.

3 ft., \$3.00 each

JUNIPER SWEDISH (SUECICA)—Dwarf, compact habit; with bluish-green foliage, a beautiful pyramidal tree. Holds its color in winter.

2 to 3 ft., \$4.00 each



JUNIPER STRICTA

JUNIPER PFITZERIANA—One of the most beautiful, graceful and desirable of the spreading Evergreens. Adapts itself to any location. Perfectly hardy, retaining its fresh silvery green color through the most severe winters. Its light feathery appearance and spreading habit make it ideal for borders.

2 to 3 ft., \$4.00 each
3 to 4 ft., \$5.00 each

NORWAY SPRUCE—Symmetrical in form, of rapid growth, hardy. Makes a beautiful ornament for the lawn when planted single and when set out as a hedge or windbreak cannot be beaten. Norway Spruce will grow as high as 25 feet. See illustration on page 22.

15 to 18 in., \$1.25 each
18 to 24 in., \$2.00 each
2 to 3 ft., \$2.50 each

COLORADO BLUE SPRUCE—Wonderful ornamental tree, silvery blue luster, perfection in form and symmetry. Its hardy characteristics make it adaptable to nearly all climates.

15 to 18 in., \$4.00 each



GLOBE ARBOR VITAE

This picture shows how we "ball and burlap" our Evergreens so they will reach you in good condition.

GLOBE ARBOR VITAE—Forms a natural Evergreen Globe or ball without any trimming; very pretty and hardy.

18 to 24 in., \$3.00 each
3 to 4 ft., \$5.00 each

SIBERIAN GLOBE ARBOR VITAE—The hardiest of the globe-shaped Evergreens. Foliage is somewhat coarser than Compacta but forms a dense ball.

18 to 24 in., \$2.50 each



MUGHO—DWARF MOUNTAIN PINE

MUGHO—Dwarf Mountain pine. Low dense and spreading in growth, usually broader than its height. One of the most attractive and valuable of our dwarf Evergreens.

10 to 12 in., \$2.50 each
12 to 15 in., \$3.00 each
15 to 18 in., \$4.00 each
18 to 24 in., \$6.00 each

ELLWANGER GLOBE—Soft, dense foliage of natural globe shape, broad at base.

3 to 4 ft., \$5.00 each

THUYA AMERICAN ARBOR VITAE—Erect pyramidal habit; soft, dark green foliage. Dense from ground up. Rapid grower; hardy. Excellent specimen for planting in tubs.

3 ft., \$3.00 each

SCOTCH PINE—Somewhat resembles in rugged artistic shape the Austrian Pine pictured on page 22 but has blue green foliage. Needles are short and stiff. Very attractive used alone or in Evergreen groups. Will grow in almost all soils.

3 to 4 ft., \$3.00 each

HEMLOCK—A beautiful hardy tree of conical shape tapering evenly from a broad base, with long gracefully drooping branches of rich dark green and short feathery needles.

4 ft., \$8.00 each

RETINOSPORA PISSIFERA (CYPRESS)—The hardiest and most satisfactory of Retinosporas for this part of the country. Feathery, thread-like foliage of dark green.

3 to 4 ft., \$4.00 each



AMERICAN ARBOR VITAE 3 ft. JUNIPER STRICTA 3 ft. SIBERIAN GLOBE ARBORVITAE 18-24 in. RETINOSPORA PISSIFERA 3 ft. NORWAY SPRUCE 2-3 ft.



PYRAMIDAL ARBORVITAE

PYRAMIDAL ARBOR VITAE—One of the most beautiful varieties, very erect and regular in form. Foliage a deep green, well retained in winter; perfectly hardy, easily transplanted and sure to give satisfaction.

3 ft., \$4.00 each
 3 to 4 ft., \$5.00 each
 4 ft., \$6.00 each
 5 ft., extra heavy, \$8.00 each

SPECIAL
Evergreen Collection
 The 5 Select Specimens **\$12.00**
 Pictured Above



AUSTRIAN PINE

AUSTRIAN PINE—With their rugged aspect and dark green needle-foliage, stiff and resistant, Austrian Pines make a very artistic aspect in any landscape scheme. Individual trees are interesting in shape and habit.

3 to 4 ft., \$4.00 each

CLIMBING ROSES

*Selected Two-Year Old Plants
Field Grown*

C LIMBING ROSES make lovely, living screens and coverings for porches, trellises, pergolas, walls, etc. They grow easily, bloom profusely through a long season and have handsome foliage. They are perfectly hardy anywhere. By mail 5 cents per plant extra.

AVIATEUR BLERIOT—One of the best of the newer yellow climbing roses. Buds are an exquisite apricot yellow opening to a lighter shade with golden center. Flowers are borne in graceful clusters and have a delightful magnolia-like fragrance.

75c each; 10 for \$7.00

DOROTHY PERKINS — Clear shell-pink with flowers borne in clusters; full and double with crinkled petals.

50c each; 10 for \$4.80

THOUSAND BEAUTIES—Superb; large double clusters, varying colors, pink, white and rose; blooms freely from June until August; strong grower; magnificent glossy foliage.

50c each; 10 for \$4.80

DR. VAN FLEET—A newer type of Climber, combining absolute hardiness with rich, flesh-pink flowers as large as Tea Roses borne in beautiful clusters.

75c each; 10 for \$7.00

CLIMBING AMERICAN BEAUTY — This new, wonderful, beautiful rose produces twenty times as many blooms as the old American Beauty. Fragrant, rich carmine flowers, 3 to 4 inches in diameter, are produced on separate stems.

85c each; 10 for \$7.50

EXCELSA or **RED DOROTHY PERKINS**—Double scarlet flowers in large trusses. Vigorous, hardy and disease resistant.

50c each; 10 for \$4.80

SILVER MOON—Large, pure white, semi-double flowers often 4 inches in diameter.

75c each; 10 for \$7.00

CRIMSON RAMBLER — Vigorous, rapid grower with large clusters of crimson flowers.

50c each; 10 for \$4.80

CLIMBING BABY RAMBLER—Clusters of dense double red flowers. Slender, graceful habit.

50c each; 10 for \$4.80



PAUL'S SCARLET CLIMBING ROSE

PAUL'S SCARLET CLIMBER—New Dazzling Climbing Rose. Color is vivid scarlet of lasting brilliancy, outclassing every other climbing variety in the scarlet shades. Does not fade but remains bright until flowers fall. Blossoms are of medium size, semi-double and perfect in bud form. Hardy and of good climbing habit. Has received many awards. Very popular. 75c each; 10 for \$7.00

Special Climbing Rose Collection

Dr. Van Fleet Paul's Scarlet
Excelsa Thousand Beauties

By Express \$2.00

By Mail 2.25

Catalog Price 2.70

HYBRID PERPETUAL ROSES

THE Hybrid Perpetuals or "June Roses" are among the hardiest and most vigorous of the double bush roses. In general the blooms are very double, large and full. Always satisfactory in any part of the country. This class of roses has been gaining in popularity of late because they are not exacting in the care required to grow them successfully.

NEW LOW PRICES

Any variety on this page, strong field grown 2 year plants 60 cents each; 10 for \$5.50. By mail 5 cents per plant extra.

CAPTAIN HAYWARD—Strikingly handsome brilliant carmine rose; highly perfumed; full and double; outer petals reflexed.

CLIO—Flowers large, in clusters, of fine globular form, flesh-color shaded in the center with rosy pink; growth vigorous; handsome foliage. One of the best roses.

J. B. CLARK—Intense, deep scarlet blooms of immense size. Very vigorous with strong upright canes; fragrant.

MARGARET DICKSON—A beautiful white Rose with pale flesh pink center, petals very large; shell shaped and of great substance; fragrant; foliage very large, dark green.

MRS. JOHN LAING—Soft, delicate pink, with a satiny sheen; fragrant. Free bloomer. One of the best light pink Roses.

PAUL NEYRON—See page 27 for description and illustration.



GENERAL JACQUEMINOT

GENERAL JACQUEMINOT—Brilliant crimson, one of the most handsome and showy roses of this color; beautiful in the bud. Popularly known as "Jack Rose."

PRINCE CAMILLE DE ROHAN—Deep velvety crimson, nearest approach to a black rose; large, moderately full. Splendid rose.

ULRICH BRUNNER—A Rose of beautiful form and finish, very striking for its color of brilliant cherry-crimson. Free bloomer.



THIS PICTURE OF A BLOCK OF OUR HYBRID TEA ROSES GIVES YOU SOME IDEA OF THE VIGOR AND SPLENDID GROWTH OF THESE TWO YEAR OLD PLANTS

HYBRID TEA ROSES

THE Hybrid Teas, commonly called the "Ever-blooming" or "Monthly" roses, commence to bloom in June and continue until Fall. This is now the most popular class of roses and great advances have been made in the development and improvement of varieties the past few years. By mail 5c extra per plant.

"The Woodlawn Half Dozen"

Illustrated in color on inside back cover.

MISS LOLITA ARMOUR—A beautiful American rose which won the Bagatelle Gold Medal in 1921, the highest rose honor. Very large blooms, chrome-yellow at base shading to burnt orange and copper. Reflex of petals yellow at base shading to bright salmon. \$1.00 each

GENERAL JANSSEN—Glowing deep carmine with long pointed buds. One of the best of its color. Vigorous and upright in growth, continuous bloomer. 85c each

SOUVENIR DE CLAUDIUS PERNET—One of the finest yellow roses of recent introduction. Pure sunflower yellow, deeper in center. \$1.00 each

LOS ANGELES—One of the most notable American garden roses. Its color is a luminous flame pink, toned coral, shaded translucent gold at base of petals. \$1.00 each

MME. BUTTERFLY—A harmony of pink, apricot and gold. Resembles Ophelia but has more intensive coloring. "A glorified Ophelia." 85c each

EUGENE BOULLET—Splendid deep crimson, full and globular; very free bloomer; vigorous branching plants; bronzed green foliage. Excellent for bedding. 85c each

SPECIAL

One each of the above Select Roses.

"The Woodlawn Half Dozen"

By Express **\$4.50**

By Mail **4.75**

OPHELIA—Highly desirable and one of the most popular varieties. Beautifully stiff formed, fragrant, salmon-flesh flowers on long stiff stems, produced all season until frost. 85c each

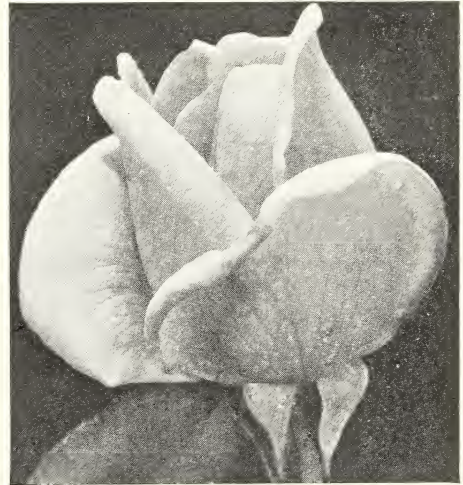
MARGARET DICKSON HAMIL — A buff-orange of globular shape. Stems long, strong; vigorous branching habit. Foliage dark green, leathery. 85c each

MRS. AARON WARD—Very free flowering, semi-double cup-shaped flowers of Indian yellow tinged with salmon rose. Fragrant. 85c each



RED RADIANCE

RED RADIANCE—Extra hardy, vigorous and prolific; fine grower and free bloomer. Color, rich velvety red. One of the best and prettiest all-around garden red roses. \$1.00 each



WHITE KILLARNEY

WHITE KILLARNEY—A duplicate of the famous and charming pink Killarney, with flowers white as snow. 75c each

LA TOSCA—A splendid garden variety of silvery pink, deeper in center. Very vigorous, nearly thornless, extremely free blooming and resistant to disease. 85c each

Have had shrubs and plants of you that have always been very satisfactory.

Mrs. N. S. Sherman.

Rush, N. Y.
February 8, 1928.

HYBRID TEA ROSES—Continued



MME. LEON PAIN

MME. LEON PAIN—Silvery salmon with orange yellow center. Very large double blooms on long strong stems. Continuous bloomer. 85c each

LADY URSULA—Shell pink. Petals gracefully reflexed. Vigorous upright habit. Does particularly well in dry locations. 85c each



BETTY

BETTY—Lovely coppery rose, overspread with golden yellow. Deliciously fragrant; with long buds. A continuous bloomer. Especially good in the Autumn. 85c each

LADY ASHTOWN—A deep carmine shading to yellow at base of petals. Flowers large with beautiful recurved petals. \$1.00 each

MRS. HERBERT STEVENS—Medium size snowy white shading to fawn and peach toward center. Has few thorns. Very profuse bloomer. 85c each

MADAME HECTOR LEUILLOT—A variety of outstanding merit, salmon-pink in center shading to gold at base of petals, gold suffusing the entire flower. Quite full and shapely. Vigorous, strong grower with bronzy foliage. 85c each



MRS. ARTHUR ROBERT WADDELL

MRS. ARTHUR ROBERT WADDELL—Graceful loose petaled orange salmon. Long pointed half-opened, deep apricot buds are unusually attractive. Soft bronzy foliage, vigorous bloomer. \$1.00 each

GRACE MOLYNEAU—A very dependable delicate flesh pink, deeper in center. Long pointed attractive buds. 85c each

MADAME CAROLINE TESTOUT—A general favorite. Large globular flowers of bright satiny rose-pink; delightfully fragrant. This is the rose which borders the streets of Portland, Oregon, making it famous as The Rose City. 85c each

MADAME ABEL CHATENAY—A lovely much-admired carmine-pink, shaded salmon, deeper at base. Bud of splendid form. 85c each

The stock sent to my residence address, 16 Mitchell Ave., Binghamton, N. Y., reached me in good shape and I was very much pleased with it.

Mr. T. A. Ryan.

Scranton, Pa.
May 25, 1928.

HYBRID TEA ROSES

Continued

JULIET—Outside old gold, inside a rich rosy red, changing to deep rose as the flowers expand. Very fragrant. 85c each

MADAME JULES GROLEZ—Large, double deep rosy-pink flowers with attractive long-pointed buds. Of bushy habit. Extra good for solid beds. 85c each

I have just received the Climbing Rose, Paul's Scarlet Climber, in a very good condition and I am well pleased with same. The stock is very healthy and I want to thank you for sending me such nice stock.

Joseph Sedlock.

Nagaunee, Mich.
May 21, 1928.

Paul's Scarlet Climber is shown on page 23.



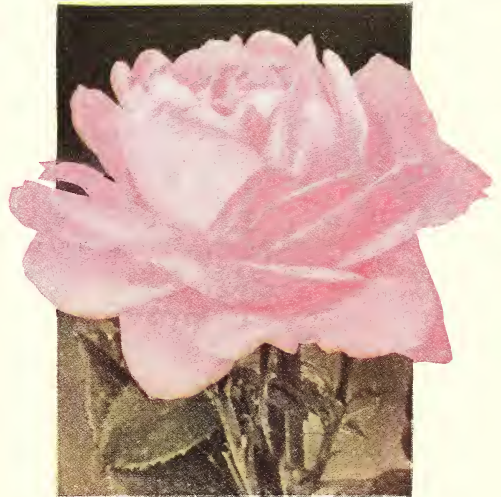
SNOW QUEEN (FRAU KARL DRUSCHKI)

SNOW QUEEN (FRAU KARL DRUSCHKI)—White American Beauty—Vigorous and hardy. The most perfect white rose, blooms continually. A great beauty. Snow Queen is a Hybrid Perpetual but is often classed with the Hybrid Teas because it blooms throughout the season. 75c each



GRUSS AN TEPLITZ

GRUSS AN TEPLITZ—Scarlet, shading to velvety crimson, very fragrant, a full grower and most profuse bearer. One of the choicest and most satisfactory of all roses. 75c each



PAUL NEYRON

PAUL NEYRON—This magnificent rose is by far the largest in cultivation; very double; beautiful deep rose color and delightfully fragrant; blossoms abundantly through entire season. Hybrid Perpetual. 60c each

WOOD'S FAVORITE Hardy Rose Collection

5 two-year field-grown bushes

By Express **\$2.50**

By Mail **2.75**

Clio

Paul Neyron

Snow Queen

Gruss an Teplitz

General Jacqueminot

Descriptions on this page and page 24

RUGOSA ROSES

RUGOSA ROSE HYBRIDS—Cannot be excelled for massing or hedge planting and are attractive in the garden. The plants are highly ornamental and the hardiest of all roses. Foliage is dark green, compact, leathery and disease-resistant.



F. J. GROOTENDORST

F. J. GROOTENDORST—This new everblooming variety is becoming more and more popular. The small, fairly double, red flowers grow in clusters. Edge of each petal is serrated and somewhat resembles a carnation. They bloom in early summer and continue until the heavy frosts come. The plant is bushy and a strong grower. A distinctive and highly desirable variety.

85c each; 10 for \$7.50

SIR THOMAS LIPTON—Double, snow-white flowers growing in clusters of medium size. Plant grows 4 feet high. Blooms throughout the summer.

65c each; 10 for \$5.50

BABY RAMBLERS

BABY RAMBLER—Bush, not climbing. Flowers are large, well formed, crimson in color, and borne in clusters of 20 to 40 flowers at one time. Blooms profusely from June until frost. Very desirable for summer bedding and, when planted as a hedge, is an object of beauty.

65c each

CLIMBING BABY RAMBLER—Similar to above but of trailing or climbing habit.

50c each

GLADIOLI

GLADIOLI, affectionately known as "Glad Flowers," are increasing enormously in popularity. The newer varieties as listed here make a glorious display of color with a minimum of effort. Plant bulbs in the spring as soon as danger of freezing is past.



AMERICAN BEAUTY

AMERICAN BEAUTY—Same color as the famous American Beauty Rose. Every spike a bouquet.

25c each; 10 for \$2.00

ANNA EBERIUS—A wonderful flower of deep velvety purple rose.

15c each; 10 for \$1.25

CARMEN SYLVA—One of the best whites; tall, slender and graceful.

2 for 25c; 10 for \$1.00

CRIMSON GLOW—Large open flowers of brilliant crimson.

15c each; 10 for \$1.25

GOLDEN MEASURE—Largest and best yellow yet produced. Rich golden yellow, no markings.

25c each; 10 for \$2.00

MARY PICKFORD—Delicate creamy white, soft, yellow throat.

15c each; 10 for \$1.25



MRS. DOCTOR NORTON—EVELYN KIRKLAND

MRS. DR. NORTON—Famous pink and cream. Awarded highest honors everywhere.

15c each; 10 for \$1.25

EVELYN KIRKLAND—Beautiful rich shade of rosy pink, darker at edges, with brilliant scarlet blotch on lower petals. Tall spike.

20c each; 10 for \$1.25

MRS. FREDERICK PETERS—Beautiful rose lilac, red throat.

25c each; 10 for \$2.00

MRS. LEON DOUGLASS—Delightful shade of rose, giant in size. Ruffled edges.

25c each; 10 for \$2.00

PURPLE GLORY—Extraordinary deep velvety maroon red, of giant size.

25c each; 10 for \$2.00

ROSE ASH—Salmon overlaid with ashes of roses. A most attractive artistic combination.

20c each; 10 for \$1.25

HERADA—Glistening mauve, shaded pure purple.

2 for 25c; 10 for \$1.00

OTHER CHOICE VARIETIES OF GLADIOLI OR "GLAD FLOWERS" WILL BE FOUND DESCRIBED AND ILLUSTRATED ON PAGE 30.

DAHLIAS

THIS list includes some of the choicest Dahlias grown, varieties that have won cups, medals and prizes even when grown by the inexperienced.

For best results plant Dahlia bulbs or tubers late, after the ground is thoroughly warm, in this section after about June 10.

Cactus varieties, marked (C) after the name have long pointed quilled or twisted petals. Decorative types, marked (D), have immense flowers usually with broad somewhat flattened petals. The Show or Fancy types, marked (S), have ball shaped flowers with tubular tightly, regularly-placed petals. Paeony flowered varieties, marked (P), have large, graceful, loosely formed flowers with open centers.

COUNTESS OF LONSDALE (C)—One of the most popular and satisfactory Cactus Dahlias. Rich salmon pink tinted apricot. 35c each; 5 for \$1.50

D. M. MOORE (D)—Deep handsome maroon. 35c each; 5 for \$1.50

DR. TEVIS (D)—Magnificent flower that has won numerous prizes. Color soft salmon rose suffused with old gold. Immense flower on long stems; free bloomer. 75c each

GEISHA (P)—Probably the showiest Dahlia grown. Brilliant scarlet and gold. Petals broad flat, loosely and gracefully arranged with yellow center. 75c each



JERSEY BEAUTY

JERSEY BEAUTY (D)—A splendid new variety that is becoming exceedingly popular. A delightful shade of rose pink. Enormous flowers of perfect form. \$1.00 each

Other choice Dahlias on page 31



THREE CHOICE GLADIOLI—LIEBESFEUER, GOLDEN QUEEN, RICHARD DIENER

RICHARD DIENER—A majestic flower of pure salmon. When first introduced a few years ago, bulbs of Richard Diener sold for \$1000.00 each. See picture above. 25c each; 10 for \$2.00

LIEBESFEUER—One of the finest and richest colored scarlet Gladioli in existence. Many flowers open at one time. See illustration above. 25c each; 10 for \$2.00

**A Few of the Best
PRIMULINUS GLADIOLI**

The Primulinus Hybrids are distinguished for their slender graceful habit of growth making them exceedingly desirable for bouquets.

ORANGE QUEEN—A lovely pure orange copper. The clear clean coloring, large size, yet characteristic graceful shapeliness of the Primulinus type are fast making it one of the most popular Gladioli grown. See illustration. 25c each; 10 for \$2.00

LOS ANGELES—A lovely shade of pink. "Cut and come again Glad." 25c each; 10 for \$2.00

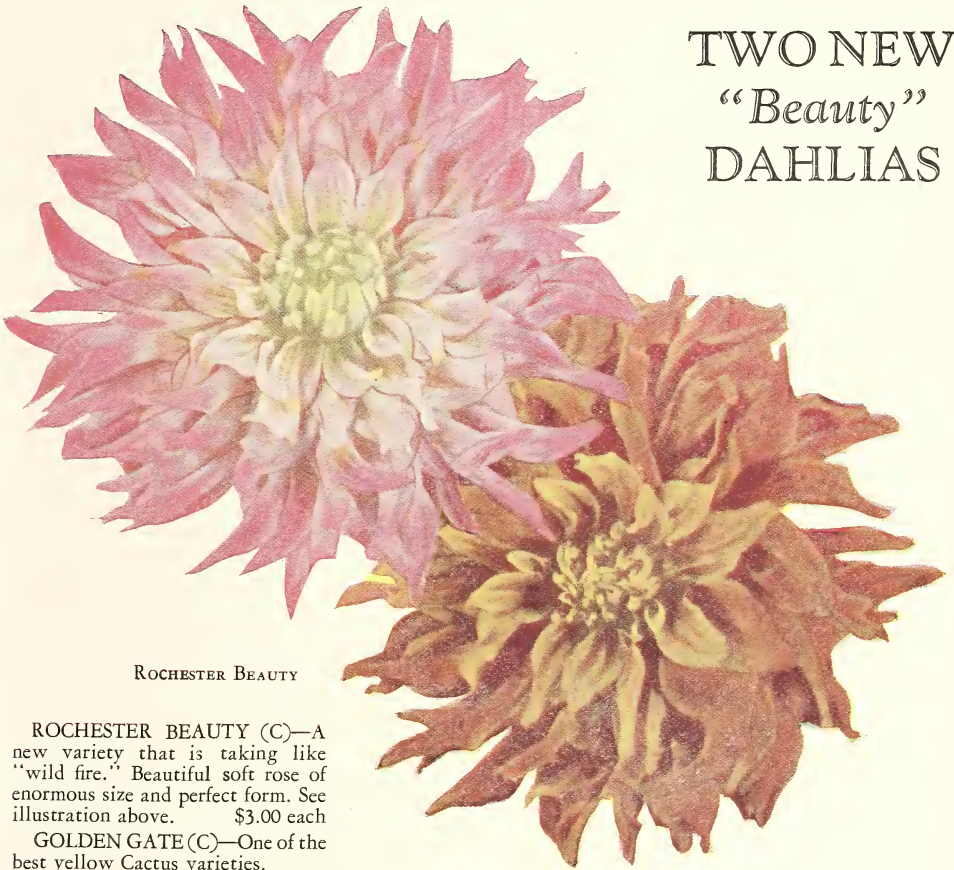
SALMON BEAUTY—Salmon pink with yellow throat. 15c each; 10 for \$1.25

SOUVENIR—Rich clear canary yellow. 25c each; 10 for \$2.00

"GLAD FLOWER" SPECIALS

One each of 12 select varieties of Gladioli described on this and preceding pages, our choice—**12 bulbs all different—75c**
Mixed Gladioli—containing many kinds not named here—10 for 50c; 100 for \$4.00

TWO NEW "Beauty" DAHLIAS



ROCHESTER BEAUTY

ROCHESTER BEAUTY (C)—A new variety that is taking like "wild fire." Beautiful soft rose of enormous size and perfect form. See illustration above. \$3.00 each

GOLDEN GATE (C)—One of the best yellow Cactus varieties.

35c each; 5 for \$1.50

J. H. JACKSON (C)—Rich velvety black maroon.

25c each; 5 for \$1.00

KALIF (C)—Large, pure scarlet, produced freely on long stiff stems. Long gracefully twisted petals.

75c each

MAUD ADAMS (S)—White deepening to lavender pink in center; free bloomer; early.

25c each; 5 for \$1.00

MINA BURGLE (D)—Beautiful deep glowing crimson with long stems. Good for cut flowers.

35c each; 5 for \$1.50

PATRICK O'MARA (D)—Soft pleasing shade of orange-buff; very large, often 7 to 9 inches in diameter. Vigorous grower with long stems. 75c each

BRONZE BEAUTY

BRONZE BEAUTY (C)—One of the finest new varieties of the popular autumn shades. Strikingly handsome gold and bronze. See illustration above.

\$1.00 each

NIFTY (D)—Another new variety of autumn shade. Beautiful clear buff.

75c each

ORANGE QUEEN (S)—Lovely orange with long stiff stems.

\$1.00 each

DAHLIA SPECIALS

One each 10 select varieties of Dahlias described on this page and page 29—our choice—all different

\$3.50

MIXED DAHLIAS

Many varieties of various colors and types.
10 for \$1.00; 100 for \$8.00

The Butterfly Bush arrived yesterday shortly before the radio hour. I was yet admiring the bush when your representative was announced and I was all ears as we have not been getting his weekly talks and I felt well repaid as his explanations were so plainly given it seems failure is impossible.

Mrs. Frank C. Ward.

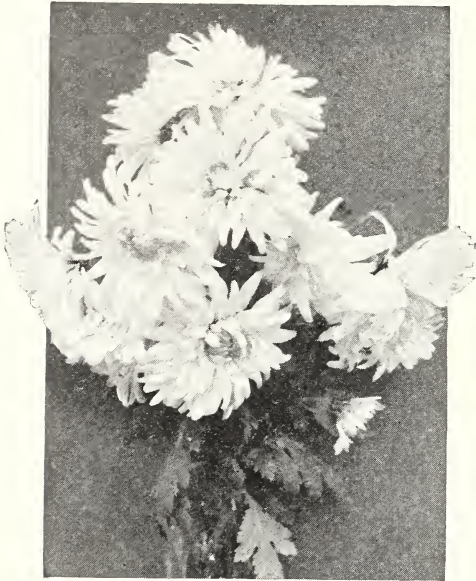
Cortland, N. Y.
April 4, 1928.

Butterfly Bush is shown on page 3.

HARDY PERENNIALS

PERENNIALS are like old family friends. They never forsake us, but come back year after year to brighten our gardens with their beauty and friendly loveliness. The tops freeze down during the winter, but they come up anew and fresh in the spring and increase in size and splendor as the years pass.

Plant early in the spring, before May 1st if possible. Keeping the flower stalks cut off after blossoming prolongs the blooming period. A mulching of straw manure, leaves or other litter during the winter is desirable.



HARDY CHRYSANTHEMUMS

HARDY CHRYSANTHEMUMS

ALL LARGE-FLOWERING KINDS

ARGENTEULLAIS—Large, attractive, deep chestnut with bronze cast.

GOLDEN QUEEN—Large, pure yellow.

HOMESTEAD—Bright, rich, rose-pink.

AUTUMN GLOW—Typical autumn tints of brilliant crimson.

MARIAN—Pure white.

INDIAN RED—Strawberry red over copper.

VICTORY—Snow white, very floriferous.

Any of the above Chrysanthemums
25c each; 5 for \$1.00

By mail postpaid 30c each; 5 for \$1.25



GAILLARDIA—BLANKET FLOWER

GAILLARDIA—One of the most gorgeous of all flowering plants. A hard center of deep maroon is thickly bordered with petals of orange and yellow, ringed by circles of crimson, red and maroon.

25c each; 5 for \$1.00

By mail postpaid 30c each; 5 for \$1.25

BLUE BIRD FLOWERS—Deep indigo-blue; borne abundantly in long, thick, compact spikes. July to September. Very pretty.

25c each; 5 for \$1.00

By mail postpaid 30c each; 5 for \$1.25

CAMPANULA (CANTERBURY BELLS)—Free blooming over long season; adapted to any garden soil. Good for cutting. Blue and white.

25c each; 5 for \$1.00

By mail postpaid 30c each; 5 for \$1.25

FOXGLOVE (DIGITALIS)—Very popular and desirable as a background for lower growing plants. The stately racemes of flowers often two feet long. Varied colors of pink, white, rose and yellow.

25c each; 5 for \$1.00

By mail postpaid 30c each; 5 for \$1.25

GOLDEN GLOW—Large, showy plant, blooms from early summer until frost. Double, golden-yellow flowers.

25c each; 5 for \$1.00

By mail postpaid 30c each; 5 for \$1.25

PYRETHRUM HYBRIDUM (PAINTED DAISY)—Colors range from deep red through rose to pure white. Easy to grow in a sunny spot where soil is good. Blooms in June and if the first crop of flowers is removed continue through the summer. Fern-like foliage.

25c each; 5 for \$1.00

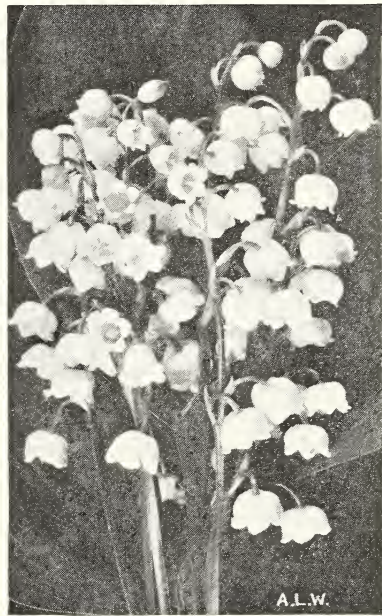
By mail postpaid 30c each; 5 for \$1.25



SHASTA DAISIES

SHASTA DAISY—A very hardy perennial, blooming better and more abundantly each season, and continuing to bloom for several months. The large pure white flowers are borne singly on long, stiff wiry stems. Strong field-grown plants.

25c each; 5 for \$1.00
By mail 30c each; 5 for \$1.25



LILY OF THE VALLEY

LILY OF THE VALLEY—Always desirable especially for secluded spots. Will thrive in any soil, producing its beautiful modest, fragrant white bells to gladden the heart. 10c each; 10 for 85c

GERMAN IRIS—Among the most popular and easiest grown perennials. We offer a fine assortment of pleasing delicate colors in grand mixture.

20c each; 10 for \$1.50
By mail 25c each; 10 for \$1.75

DELPHINIUM, CHINESE—Pretty variety with fine, feathery foliage and intense gentian-blue flowers in open panicles. See page 34 for other Larkspurs.

25c each; 5 for \$1.00
By mail 30c each; 5 for \$1.25

RED FLOWERING GIANT MALLOW—Large, intense colored flowers are vividly showy. Hardy tall growing plant. Foliage beautiful.

25c each; 5 for \$1.00
By mail 30c each; 5 for \$1.25

PINK MALLOW MARVELS—Same habit of growth as red flowering variety but with large showy flowers of delicate pink with deeper shade toward the center.

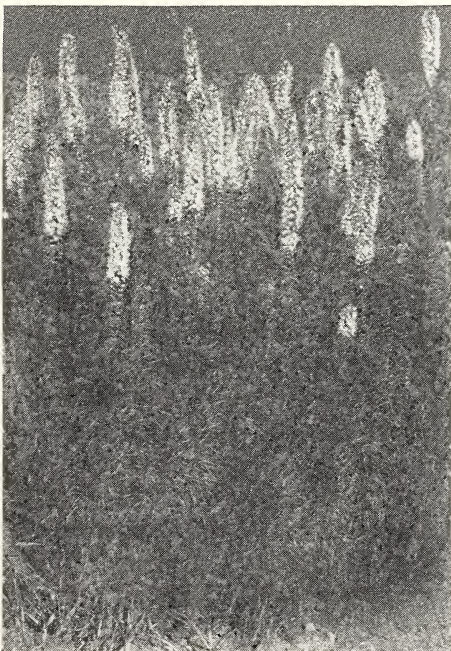
25c each; 5 for \$1.00
By mail 30c each; 5 for \$1.25

BLEEDING HEART (DICENTRA)—One of the most delightful of all early spring flowering perennials, bearing numerous rosy-red heart-shaped flowers in long drooping racemes. Grows about 2 feet high.

50c each

LIATRIS (BLAZING STAR or GAY FEATHER)—Combines beauty and odd appearance. Blooms in midsummer, throwing up long, narrow spikes of rich, lavender-pink flowers, which last very well. See illustration at left.

25c each; 5 for \$1.00
By mail 30c each; 5 for \$1.25



LIATRIS—BLAZING STAR



JULES SANDEAU, ORCHID BRIDE, VON HINDENBURG



CHINESE LANTERN PLANT

orations that last all winter.

LARKSPUR (DELPHINIUM)—Long showy spikes of various delightful shades of blue.

HARDY PHLOX

JULES SANDEAU—Large free flowering variety of a delightful shade of sparkling pink.

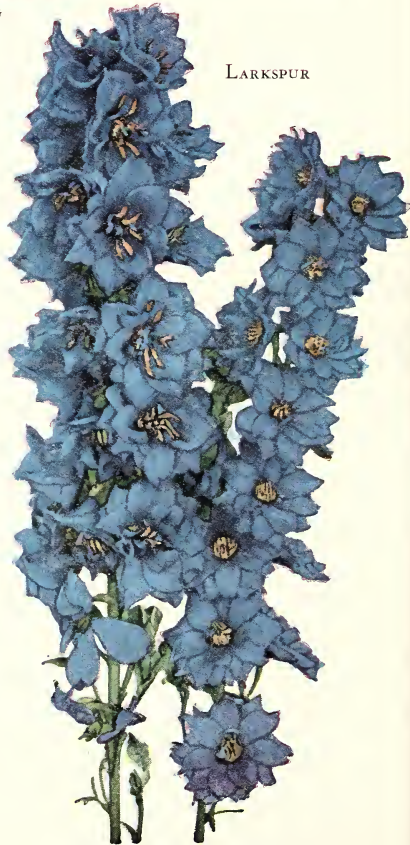
ORCHID BRIDE—A new delicate orchid shade. Individual flowers are frequently large enough to completely cover a silver dollar.

VON HINDENBURG — One of the finest new varieties. Deep rich fiery red.

Any of the above Hardy Phlox 25c each; 5 for \$1.00
By mail 30c each; 5 for \$1.25

CHINESE LANTERN PLANT — Dense bushes, growing about 2 feet high, producing bright orange-scarlet, lantern-like fruits which may be cut for decorations. 25c each; 5 for \$1.00

LARKSPUR



HARDY PHLOX

Continued

EUROPA—White with a decided crimson-carmine eye. Flowers and trusses large.

FRAULEIN G. VON LASSBURG—Pure white.

GENERAL VON HEUTZ—Brilliant salmon-red.

KING OF THE PURPLE—Rich purple.

LA VAGUE—Large; silvery rose.

RHEINLANDER—Beautiful salmon-pink; flowers and trusses of immense size.

G. A. STROHLEIN—Scarlet-orange, bright crimson eye.

Any of the above varieties

25c each; 10 (one of a kind) for \$2.00

By mail 30c each; 10 for \$2.25

PHLOX SUBLATA

Moss Pink

Dwarf or creeping variety of phlox very useful for rock gardens and edging, bearing masses of white and pink flowers that completely cover the plants. One of the first flowers to bloom in the spring.

30c each; 5 for \$1.25

By mail 35c each; 5 for \$1.50



FESTIVA MAXIMA (The Best White Paeony)

PAEONIES

TWO-YEAR-OLD ROOTS

THE Paeony is a noble flower, almost rivaling the Rose in brilliancy of color and perfection of bloom. Hardy as an oak in the most severe climate. Each year adds to their size and beauty. We have selected only the choice varieties.

By Parcel Post add 5c per plant

FESTIVA MAXIMA—Most popular white. Large snow-white, flecked crimson in center. Early; vigorous. 75c each

EDULIS SUPERBA—Large, bright pink mixed with lilac. Very free bloomer. 60c each

FELIX CROUSSE—Brilliant red; fragrant; one of the best. 75c each

CARANI—White, flushed delicate pink. 50c each

DUCHESS DE NEMOURS—Pure white crown, sulphur white collar; fragrant; early. 50c each

FLORAL TREASURE—Large, pale lilac-rose. 60c each

TRIUMPH DE LILLE—Shell-pink; fragrant and free bloomer. 60c each

LOUIS VAN HOUTTEI—Deep carmine-rose with purple tints; very showy; late. 75c each

UNNAMED PAEONIES—Mixed colors and types. 50c each; 10 for \$4.50



NEW VARIEGATED YUCCA FILAMENTOSA

YUCCA FILAMENTOSA, VARIEGATED—Long, drooping, wax-like flowers are supported on evergreen foliage 3 to 4 feet high. Deep green leaf has yellow margins making appearance novel and striking. Beautiful all year and excellent for winter landscaping. Extremely hardy.

60c each; 5 for \$2.50

I received my plants and shrubs in the very best condition and I am more than pleased.

Emma Harris.

Wellston, Mich.
April 19, 1928.

My shrubs came all right and in perfect condition. They were as fine shrubs as I've ever received and with a splendid root growth.

Mrs. C. A. MacEwen.

Dickinson Center, N. Y.
May 19, 1928.

SOUR CHERRIES

ALL BUDED ON FRENCH STOCK

PRICES OF SOUR CHERRY TREES

Age	Height	Grade	Each	Ten
2 yrs.	5 to 6 ft.	XXX	\$.85	\$ 7.50
2 yrs.	4 to 5 ft.	XX	.75	6.50
2 yrs.	3 to 4 ft.	X	.50	4.00
3 yrs.	Extra large	XXXX	1.25	10.00

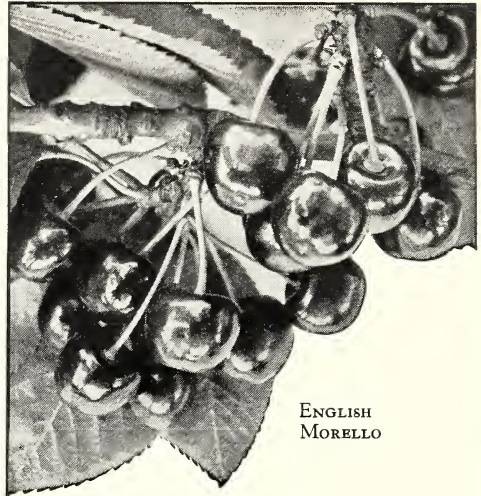
Mail Size, 3 ft., 50c each; 3 for \$1.25, postpaid
Write for special wholesale prices on fifty trees
or more

10% Discount on all Cash Orders received on
or before March 1, 1929.

5% Discount between March 1 and April
1, 1929.

EARLY RICHMOND—One of the most valuable and popular Cherries for cooking purpose. A good old variety that yields marvelous crops in the garden. This hardy Cherry fruits on young trees soon after planting. Early Richmond is a great favorite throughout the West and Northwest, where only hardy varieties succeed. The tree is a free grower; hardy, healthy, and very productive. Hundreds of tons of Early Richmond Cherries are now used in making Cherry wine. This is a new market for Sour Cherries which will keep the price of Cherries up. Some growers got ten to twelve cents per pound for their crop last year.

MONTMORENCY—A beautiful, large, red, sour Cherry. The fruit is clear, bright red and of good size. Flesh is of fine quality, sub-acid. The trees are clean growers and prolific bearers. No matter how unfavorable the season may be, Montmorency can be depended upon for a full crop. It is a good shipper, very attractive looking and always brings good prices. The canning factories use quantities of them and the demand is greater than the supply. Fruit ripens ten days later than Early Richmond.



ENGLISH
MORELLO

ENGLISH MORELLO—Best late sour Cherry. Medium sized, very dark red color, sometimes nearly black. The flesh is of good quality and it being acid in flavor makes it valuable for canning and preserving. Tree is a small grower with light limbs and trunk. Fruit ripens about two weeks later than Montmorency.

My order arrived this afternoon all O.K. The fruit trees are handsome and in fine shape.

M. S. Corey.

Freeport, L. I., N. Y.
April 7, 1928.

I want to thank you for the fine fruit trees you sent me some time ago; they are beautiful.

E. M. Laughlin.

Freeport, L. I., N. Y.
March 12, 1928.



MONTMORENCY — BEST OF THE SOUR CHERRIES

SWEET CHERRIES

ALL BUDDED ON FRENCH STOCK

SWEET varieties of Cherries succeed best in sandy or gravelly soil, well drained. Avoid low or wet ground. The trees are very large and spreading.

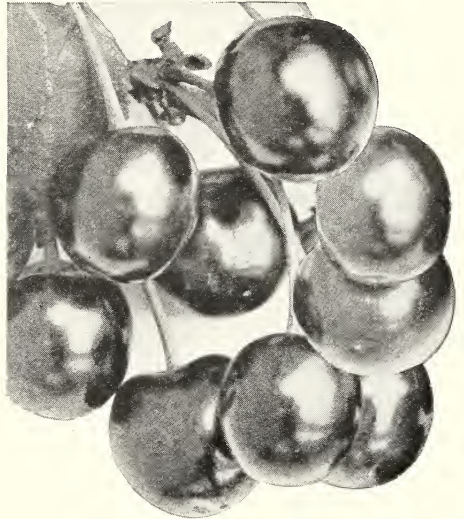
PRICES OF SWEET CHERRY TREES

Age	Height	Grade	Each	Ten
2 yrs.	5 to 7 ft.	XXX	\$1.00	\$ 9.50
2 yrs.	5 to 6 ft.	XX	.90	8.50
2 yrs.	4 to 5 ft.	X	.85	8.00
3 yrs.	Extra large	XXXX	1.35	12.00

Write for special wholesale prices on 50 trees or more

10% Discount on all Cash Orders received on or before March 1, 1929.

5% between March 1 and April 1, 1929.



BLACK TARTARIAN

GOV. WOOD—One of the best cherries; fruit large, yellow nearly covered with bright red. Flesh light, tender and juicy. "Has a taste all of its own." We like it — so will you.

NAPOLEON—Sometimes called Royal Ann. An ideal light-colored sweet cherry. Very attractive coloring with pale amber cheek, fruit large, heart-shaped; flesh firm, and of delightful flavor. Splendid shipped and fine for canning. Tree is a fine grower and immense bearer.

SCHMIDT'S BIGARREAU—Very large cherry, sweet, of especially good flavor. The flesh is dark, tender and very juicy. It is an excellent shipper and brings good money on the market. Late.

WINDSOR—The standard of excellency. The hardest of the sweet varieties; large, very dark red, with firm, tender, juicy flesh. Prolific bearer.

BLACK TARTARIAN—Early to middle of June. Fruit large with small pit; heart-shaped; very dark, almost black; tender, juicy Sweet Cherry of surpassing quality, excellent for table use and canning; the tree is an upright, dense grower, remarkable, vigorous and regular bearer of immense crop.

PROFIT FROM CHERRIES

A two-year-old Cherry Tree will bear a gallon of Cherries. A ten-year-old tree will bear from 100 to 200 lbs. One acre will grow 100 trees; figuring 150 lbs. to the tree this acre will produce 15,000 lbs. If sold at 7c per lb., will bring a return of \$1,050 per acre.

WHY NOT PLANT CHERRIES?

Received the six Sweet Cherry trees and ten Pear trees, one English Walnut tree, one Dahlia all in very fine condition. Many thanks for consideration shown above order.
 Arkport, N. Y. Mrs. Michael G. Clark.
 May 25, 1928.



YOUNG CHERRY ORCHARD IN BLOOM — PLANTED WITH WOOD'S QUALITY TREES



ONE HUNDRED THOUSAND PEACH TREES IN THIS BLOCK ON OUR VALLEY FARM — THE FINEST GROWN

WOOD'S QUALITY PEACHES

PEACH growing is a great industry. The ease with which these trees can be grown, their freedom from disease, the short period before they become productive, and the immense demand for the fruit make peach growing very profitable. Invaluable also for the home garden.

Our trees are all budded from bearing orchards, are free from disease and have extra fine roots.

Guaranteed true to name. See order blank.

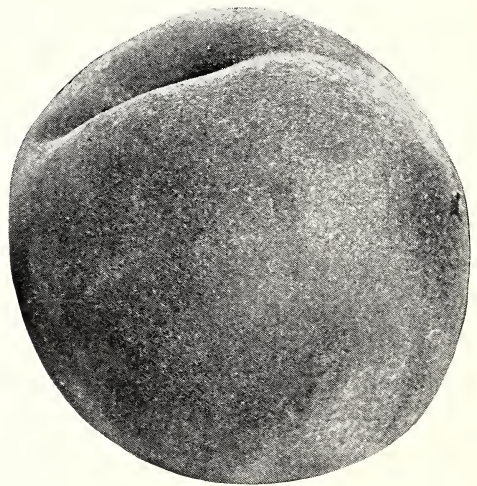
ALL VARIETIES LISTED ARE
FREESTONE

Prices of Peach Trees (except Wilma and
Dr. Worcester)

Height	Grade	Each	Ten
4 to 5 ft.	XXX	\$.50	\$4.50
3 to 4 ft.	XX	.40	3.50
2 to 3 ft.	X	.30	2.50

Mail size, 3 ft ⁴/₈ each: 3 for 75; postage
paid to the 4th parcel post one.

*Write for special wholesale prices on fifty
or more trees*



CARMAN

CHAMPION—Large white freestone peach; red-checked, sweet, rich, juicy. August.

EARLY CRAWFORD—Large, rich yellow with red cheek; has all the characters that gratify the taste. One of the best in quality.

LATE CRAWFORD—Superb yellow peach; of large size and excellent quality; not heavy bearer.

I have been planting Woodlawn Trees for a good while and they have done well and they were true to name. I have one Dr. Worcester Peach beginning to bear and it is some Peach.

Geo. S. Krinkle.

Greensburg, Pa.
March 14, 1928.

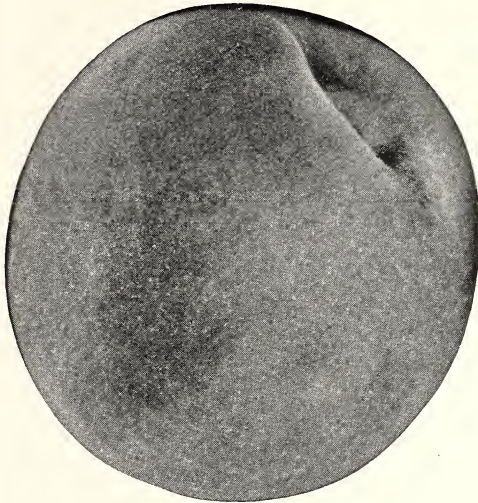
CARMAN—Large early white peach with deep blush; spicy flavor. Prolific bearer; good market variety.

ELBERTA—Large, yellow, red-checked; valuable for garden. Greatest commercial peach.

In the spring of 1927 I bought a Butterfly Bush and 2 Forsythia from your nurseries. I have never had anything grow so good as your stock. That Butterfly Bush is beautiful and fully 8 feet in height if not more. Your prices are so much lower than others, which means a lot to people of moderate means but who love beauty.

Mrs. James Laffan.

Manville, R. I.
September, 1928.



ROCHESTER

ROCHESTER—Earliest yellow peach; red-checked; juicy and delicious. Strong grower and early bearer. See prices on page 38



HALE

HALE—The skin is deep crimson and without fuzz; flesh golden-yellow, firm and has delicious flavor. Good keeper and shipper.

NEW WILMA PEACH

IS REPORTED AS ELBERTA RIVAL

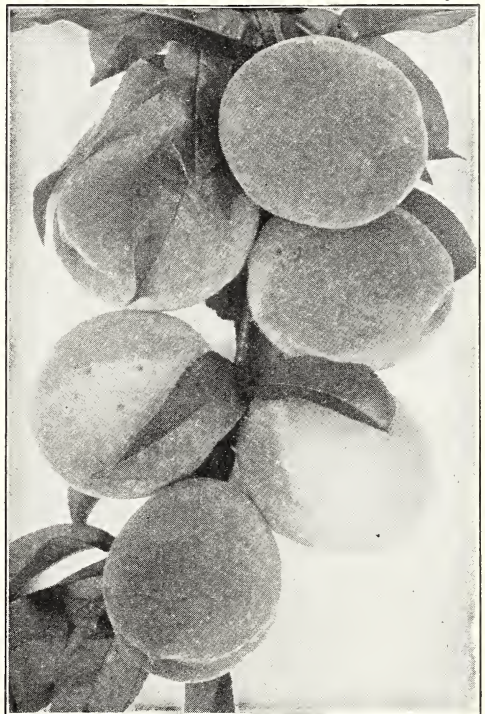
The new peach for which fruit growers of New York State have been looking has been discovered in the Wilma, a yellow-fleshed variety that will rival the favorite Elberta, say horticultural experts at the New York State Agricultural Experimental Station at Geneva. The new variety gains double favor by ripening a week following the Elberta season. Trees vigorous, productive, and hardy enough to withstand the coldest winter recorded in half a century in New York State.

The fruit is almost as large as Elberta, about the same color, and of better quality. It is destined to become a strong favorite in the peach industry of this state, the horticulturists say.

DR. WORCESTER

THE 20TH CENTURY PEACH

Famed the country over for its wonderful rich, sweet flavor. Woodlawn Nurseries are proud of the fact that they introduced this variety and have exclusive sale of it. See page 46 for further information and illustration in color.



BRANCH FROM WILMA PEACH TREE

PRICES OF WILMA AND DR. WORCESTER PEACH TREES

Height	Grade	Each	Ten
4 to 5 ft.	XXX	\$.60	\$5.00
3 to 4 ft.	XX	.50	4.00
2 to 3 ft.	X	.40	3.00

Mail size 3 ft., 40c each; 3 for \$1.00.

Write for special wholesale prices on fifty or more trees

10% discount on all cash orders received on or before March 1st, 1929; 5% between March 1st and April 1st, 1929.

QUALITY PLUM TREES

BUDED ON FRENCH PLUM STOCK

PRICES OF PLUM TREES

Height	Grade	Each	Ten
5 to 7 ft.	XXX	\$.85	\$ 7.50
4 to 6 ft.	XX	.75	6.50
3 to 4 ft.	X	.50	4.50
Extra large size XXXX		1.35	12.00

Mail Size, 3 ft., 50c; 3 for \$1.25; postpaid to 4th zone.

Write for special wholesale prices on 50 or more trees.

10% Discount on all cash orders received on or before March 1, 1929.

5% between March 1 and April 1, 1929.

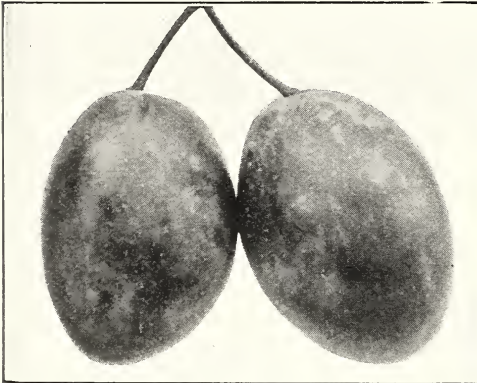


BURBANK PLUM

BURBANK—Resembles Abundance, except it is deeper in color and ripens later. Hardy. August.

APRICOT TREES

Two years	XXX Grade	\$1.25 each
Two years	XX Grade	1.00 each



GERMAN PRUNE

GERMAN PRUNE—Standard purple prune—rich, juicy, fine. Good for drying and therefore commercially desirable. Great favorite.

BRADSHAW—Very large, dark violet-red plum; juicy and good. Productive and valuable for market.

ABUNDANCE—One of the best Japan Plums. Fruit large, bright cherry-red; flesh yellow, firm, juicy.

LOMBARD—Medium, dark red; juicy. Wonderful early bearer; strong grower and hardy.

All of the 50 Plum trees I got of you last spring have made a wonderful growth. Every one lived and is doing fine. Will probably need more trees for next spring.

Shippensburg, Pa.
October 1, 1928.

Arthur E. Lindsey.



MOORPARK APRICOT

MOORPARK—One of the largest. Yellow with red cheek, firm, juicy and very productive. An old, dependable variety. August.

HOME GARDEN FRUIT TREE COLLECTION

1 Wagener Apple	1 Elberta Peach	
1 Early Richmond Cherry	1 Bartlett Pear	
1 Balck Tartarian Cherry	1 Orange Quince	
	1 German Prune	
7 XXX Grade Trees		\$5.25
	Catalog Price	\$6.05



ONE OF OUR BLOCKS OF APPLE TREES. Mr. Wood who shows in the picture is over six feet tall. Most of the trees are higher than his head. Everyone who saw our trees last season declared they were the finest in the state.



xxx

xx

x

This is the way we grade our trees. Note the abundance of fine fibrous roots secured only by careful, skillful cultivation. They made unusually strong growth this year. Trees like these grow and give satisfaction.

APPLE TREES

GUARANTEED TRUE TO NAME AS PER
ORDER SHEET

BUDED ON FRENCH SEEDLINGS

PRICES OF ALL STANDARD APPLES

Except Ohio Beauty, Cortland and Red Spy

Age	Height	Grade	Each	Ten
2 yr.	5 to 7 ft.	XXX	\$.85	\$5.50
2 yr.	5 to 6 ft.	XX	.75	4.00
2 yr.	4 to 5 ft.	X	.65	3.00
3-4 yr.	Extra large	XXXX	1.00	7.50

Mail size, 3 ft., 50c each; 3 for \$1.25, postage paid.

Special Wholesale Prices of Apples for 50 or more trees — except McIntosh XXX — \$30.00 per 100; XX — \$25.00 per 100; X — \$15.00 per 100.

No discount on these special prices.

SUMMER VARIETIES

EARLY HARVEST—Medium size pale yellow.

YELLOW TRANSPARENT—Earliest of all. Color when ripe pale yellow; good quality, mild, yet sprightly flavor. Bears abundantly at a very early age. Three year trees frequently produce fine fruit. Excellent for home garden. Season, July.

RED ASTRACHAN—Very handsome, medium size, good quality; rather acid.

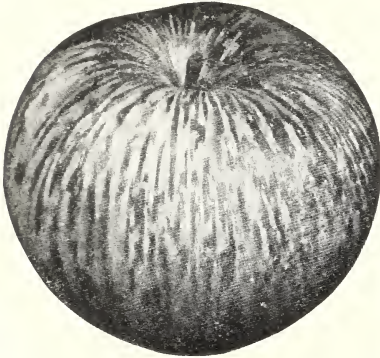
WILLIAMS FAVORITE—Beautiful bright red, of mild agreeable flavor.

WOODLAWN QUALITY APPLES—Continued

Prices of all varieties on this page same as shown on page 41

AUTUMN VARIETIES

WINTER VARIETIES—Cont.



WEALTHY

WEALTHY—Medium size, attractively striped and splashed with dark red; flesh white, well flavored. Very hardy.

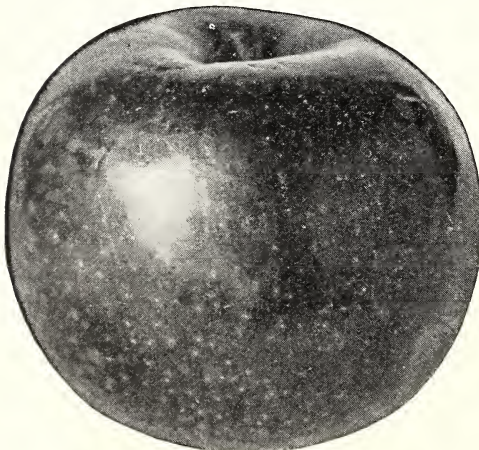
DUCHESS OF OLDENBURG—Red striped; tender and juicy. The fruit brings good prices.

GRAVENSTEIN — Large, attractive yellow streaked and splashed with red.

MAIDEN BLUSH—Beautiful waxen yellow with crimson cheek.

AUTUMN STRAWBERRY—Highly esteemed as a dessert apple. Pale yellow striped light and dark red.

WINTER VARIETIES



McINTOSH

McINTOSH RED—Famous for its attractive red color, uniform size and excellent flavor. Flesh white, firm, crisp and tender. Brings good prices in the fancy apple market.



PRIZE WINNING BALDWINS

GROWN FROM WOOD'S QUALITY STOCK

BALDWIN—Leading commercial variety in the orchards of New York, Pennsylvania and Ohio. The standard fruit in the American markets and very largely used in cold storage for export trade. Large, red and of good quality. Fruit keeps in common storage until April.

GRIMES GOLDEN—Beautiful, rich, golden-yellow Apple; flesh tender, juicy.

JONATHAN—Medium size; brilliant red, highly and deliciously flavored. Hardy, productive, healthy and vigorous; bears young.

RHODE ISLAND GREENING—Highest quality. Ranks next in popularity to Baldwin.

ROME BEAUTY—Large, uniform sized Apple; flesh nearly white, fine-grained and juicy.

TOLMAN SWEET—Yellow with faint flushed cheek; valuable sweet winter baking apple.

WINTER BANANA—Large, pale yellow. Mild and sub-acid; flavored like banana.

NORTHERN SPY—One of the most popular eating apples. Fruit large and attractive, striped bright red, juicy, crisp, tender and deliciously flavored. Ranks about third in commercial importance.

My trees have been received and carefully set out. They are nice healthy looking ones and so I want to tell you how pleased I am.
Smithfield, Va.
March 25, 1928.

Mrs. J. F. Purvis.

CHOICE APPLES of RECENT ORIGIN

WINTER VARIETIES

*Prices of Cortland, Ohio Beauty
and Red Spy*

Height	Grade	Each	Ten
5 to 7 ft.	XXX	\$1.00	\$8.50
4 to 5 ft.	XX	.85	7.50
3 to 4 ft.	X	.65	5.00
Extra large	XXXX	1.50	12.00
Mail size 65c each; 3 for \$1.75			

NEW CORTLAND APPLE—"The most promising of the tree-fruits that have originated at this station," says the New York State Experiment Station. Resembles the popular McIntosh, but fruits are larger, brighter in color, of richer flavor, and flesh is firmer and more juicy. Ideal for New York and New England States.



OHIO BEAUTY



CORTLAND APPLE

OHIO BEAUTY—This apple has given wonderful satisfaction since we introduced it. Exceptionally large; yellow or greenish blush, attractively striped with red. Crisp, tender, juicy and sub-acid. Fine handsome eating or cooking apple. We have exclusive sale of "Ohio Beauty."

NEW RED SPY—"Whoever grows Northern Spy, either for profit or pleasure should try Red Spy," says the horticulturist at the New York State Experiment Station. Has all the good qualities of hardness, reliability and delightful flavor of its famous parent, Northern Spy, but its color is a solid bright red.



RED SPY

SPECIAL

One each of the
three choice vari-
eties on this page. **\$2.50**

STANDARD APPLES

WINTER VARIETIES—Cont.

Prices same as on page 41



DELICIOUS

DELICIOUS—Fruit large, nearly covered with brilliant dark red; flesh finely grained, crisp and melting, juicy with delightful aroma; highest quality. Good keeper and shipper.

HUBBARDSTON NONESUCH—Large smooth yellow apple mottled and splashed with red.

STARK—A very reliable commercial variety, pale green or yellow with red blush.

WAGENER—A superior apple of bright red skin with contrasting light yellow.

OTHER STANDARD WINTER APPLES

that we grow but have no room to describe here. Same prices as shown on page 41.

N. W. Greening, Stayman Winesap, Smokehouse, Wolf River, York Imperial

DWARF APPLES

PRICES OF DWARF APPLES

Height	Grade	Each	Ten
4 to 5 ft.	XXX	\$.85	\$7.50
3 to 4 ft.	XX	.80	7.00

Mail Size, 3 ft., 80c each; 3 for \$2.00

Especially desirable where space is limited. They commence to bear the second year after planting and have the same size and quality fruit as standard trees. We have the following varieties:

Delicious	McIntosh
Grimes Golden	R. I. Greening
Jonathan	Wagener
Yellow Transparent	

CRAB APPLE TREES



HYSLOP CRAB APPLE

HYSLOP—Large, dark red, flesh yellow, sub-acid. Very productive and hardy. Excels for making fine jellies and preserves.

5 to 7 ft., 85c each; \$7.50 per 10

QUINCE TREES

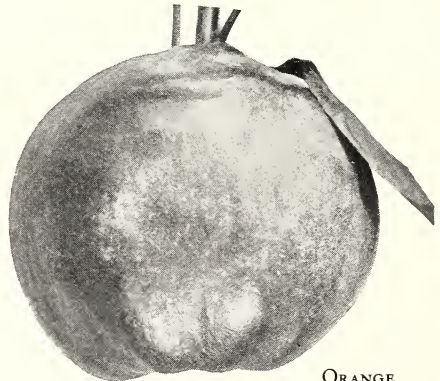
BUDED ON FRENCH STOCK

PRICES OF QUINCE TREES

Height	Grade	Each	Ten
4 to 5 ft.	XXX	\$1.00	\$ 9.00
3 to 4 ft.	XX	.90	8.50
2 to 3 ft.	X	.80	7.50
Extra large	XXXX	1.50	12.00
Mail size		.80	7.50

CHAMPION—Golden yellow color, bears abundantly. October.

ORANGE—More largely planted than any other variety. Large, golden-yellow. Fine flavor.



ORANGE

DWARF PEARS

Especially useful in towns and cities where space is limited. Fruit is exactly the same as borne on standard trees. Our Dwarf Pears are all budded on imported French Quince stock and are the best that you can buy.

PRICES OF ALL VARIETIES—
LARGEST SIZE—2 YEARS

Height	Grade	Each	Ten
3 to 4 ft.	XXX	\$.85	\$7.50

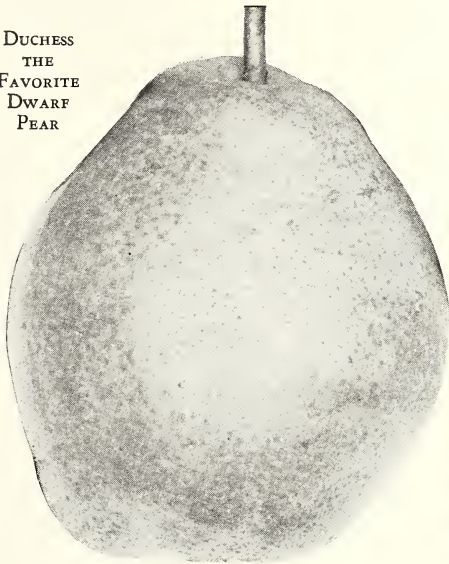
10% Discount on all cash orders received on or before March 1st, 1929; 5% between March 1st and April 1st, 1929.

DWARF BARTLETT—Dwarf similar to standard variety. Best known of all Pears. Description on page 46.

DWARF BUERRE D'ANJOU—One of the best late varieties. See description under Standard Pears.

DWARF CLAPP'S FAVORITE—Good either as dwarf or standard.

DUCHESS
THE
FAVORITE
DWARF
PEAR



DWARF DUCHESS—Most popular of all dwarfs and most widely grown. Great money getter. Hardy and bears uniformly big crops. Fruits large; color dull greenish yellow; spotted with russet; flesh white, rich and of good quality.

DWARF SECKEL—Valuable in standard and dwarf variety. Fruit same on either tree.

I received my order O.K. Everything looks perfect. Will tell my friends and show them my order.

Manchester, N. H.
April 25, 1928.

Mrs. C. Reynolds.

STANDARD PEAR TREES

PRICES OF ALL STANDARD PEARS

Height	Grade	Each	Ten
5 to 7 ft.	XXX	\$.85	\$5.50
4 to 6 ft.	XX	.75	4.00
3 to 4 ft.	X	.50	3.00

Mail size, 3 ft., 50c each; 3 for \$1.30; postpaid.

10% Discount on all cash orders received on or before March 1st, 1929.

5% between March 1st and April 1st, 1929.

**SPECIAL WHOLESALE PRICES
ON STANDARD PEARS**

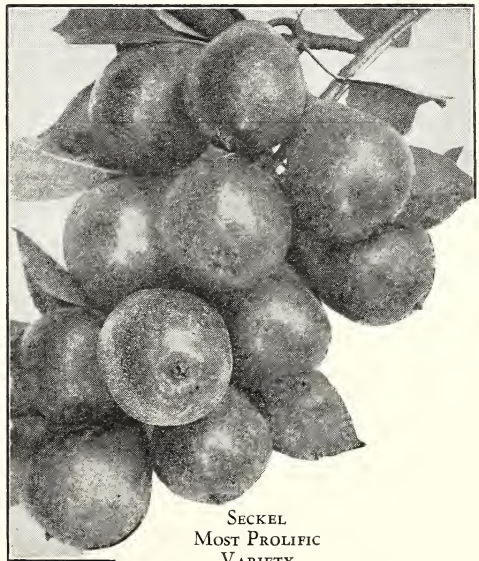
For 50 or more trees

No discount from these prices

**XXX—\$30.00 per 100 XX—\$25.00 per 100
X—\$15.00 per 100**

BUERRE D'ANJOU—A very popular and valuable variety. Fruit large, handsome, buttery and melting with fine flavor. Keeps well into mid-winter.

CLAPP'S FAVORITE—Very large, pale lemon-yellow color, with bright crimson cheek. Flesh finely grained, juicy, melting and buttery.



SECKEL
MOST PROLIFIC
VARIETY

SECKEL—Fruit small; skin rich yellowish brown with a deep brownish red cheek. Very juicy; one of the richest and highest flavored pears known. September and October.

Pears continued on next page.

STANDARD PEARS

Continued from page 45

PRICES OF STANDARD PEARS

Height	Grade	Each	Ten
5 to 7 ft.	XXX	\$.85	\$5.50
4 to 6 ft.	XX	.75	4.00
3 to 4 ft.	X	.50	3.00

Mail size, 3 ft., 50c each; 3 for \$1.30; postpaid.

See page 45 for special prices on 50 or more trees.

BARTLETT—Best and most popular of all pears for market and home use. Color clear yellow with a faint blush on exposed cheek. Fruit very large, thin skinned; flesh buttery and melting, rich musky flavor. Its splendid qualities render it a general favorite everywhere. Tree strong grower, bears young and abundantly. August and September.

KIEFFER—One of the leading commercial varieties of late or winter pears. Fruit large, rich yellow, tinged with red, somewhat russet; very handsome. Flesh is white, juicy and of good flavor. A very dependable bearer.

FLEMISH BEAUTY—A pale yellow Pear almost covered with light russet, which becomes reddish-brown when ripe. Fruit is large and of sweet rich melting flavor.



BARTLETT PEAR



DR. WORCESTER PEACH

DR. WORCESTER

"The 20th Century Peach"

One of the finest of the newer peaches, valuable as a commercial variety and excellent for the home garden. It is very large, golden yellow, overlaid with red. Flesh is yellow, firm, juicy and of rich sweet flavor.

Grade	Each	Ten
XXX	\$.60	\$5.00
XX	.50	4.00
X	.40	3.00

Mail size 3 ft., 40c each; 3 for \$1.00; postpaid to 4th zone.

Other Peaches on pages 38 and 39.

10% Discount on all cash orders received on or before March 1st, 1929; 5% Discount between March 1st and April 1st, 1929.

NEW LATHAM
RED RASPBERRY



LATHAM

THE NEW BIG RED RASPBERRY

PROF. W. H. ALDERMAN, Chief, Division of Horticulture, University of Minnesota, says of the Latham Raspberry:

"The variety not only is resistant to our winter conditions, but is one of the most productive raspberries with which we are familiar.

"Its attractive coloring and firmness give it such favorable appearance on the market that it ordinarily commands a premium of fifty cents a case over the price of the ordinary raspberry.

"Free from Mosaic disease this raspberry can hardly be excelled by any which may be grown in this or adjoining states."

OUR LATHAM RASPBERRIES DO NOT "RUN OUT"—The chief cause of raspberries "running out" is Mosaic disease which weakens ordinary plants until they become unprofitable. Our Latham Raspberries are Mosaic-free and acceptable anywhere under the most rigid inspection.

LATHAM IS PERFECTLY HARDY—As far north as Winnipeg, Canada, Latham has proved hardy and never winter-kills.

ITS PRODUCTIVENESS IS TRULY SENSATIONAL—Figures of actual yields show that Latham excels all other varieties in quantity of yield. There are records of fields that have produced over \$1000.00 per acre each season.

PRICES OF LATHAM RASPBERRIES
2 for 35c; \$1.25 per 10; \$2.00 per 25; \$6.50 per 100.
By mail add 10c per 10; 20c per 25.

Other Red Raspberries

PRICES OF ALL VARIETIES EXCEPT LATHAM
2 for 25c; \$1.00 per 10; \$1.50 per 25; \$3.50 per 100;
\$25.00 per 1000. By mail add 10c per 10; 20c per 25.

WOOD'S IMPROVED CUTHBERT—Large red berry; flesh firm and of rich flavor. We recommend it for either home use or field culture as it is one of the leaders on all markets.

ST. REGIS (EVERBEARING)—A new acquisition to the Red Raspberry family. Fruit commences to ripen with the earliest and continues on young canes until October. Large, bright crimson, flesh firm and meaty. Good shipper and very prolific.

COLUMBIAN—Purple berry; of rich sprightly flavor. It is undoubtedly the best raspberry in cultivation for canning as it retains its color, form and flavor. Most productive of all raspberries.

The trees which were ordered from you some two weeks ago have arrived in excellent condition.

Connellsville, Pa.
October 31, 1928.

Mrs. E. Leckemley.

BLACK RASPBERRIES

PLUM FARMER—Has been thoroughly tested in Western New York, where it is a great favorite for market and home use. Fruit very large, often an inch in diameter. Brings highest market price.

BLACK DIAMOND—One of the best for home and market use. For drying and evaporating it excels all others. Fruit large and sweet.

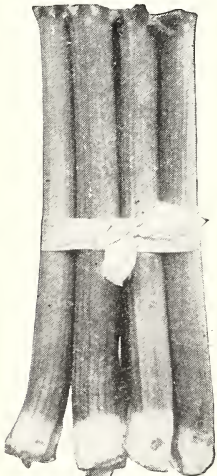
Prices of above 2 varieties: 2 for 25c; \$1.00 per 10; \$1.50 per 25; \$3.50 per 100; \$25.00 per 1000.



NEW GIANT BLACK RASPBERRIES

NEW GIANT BLACK RASPBERRY—This recently developed variety is meeting with great favor among commercial growers, being considered by some even better than the popular Plum Farmer. Strong grower and hardy; fruit unusually large and firm. Long bearing season.

2 for 35c; \$1.25 per 10; \$2.00 per 25; \$6.50 per 100.



RHUBARB

RHUBARB

(Pie Plant)

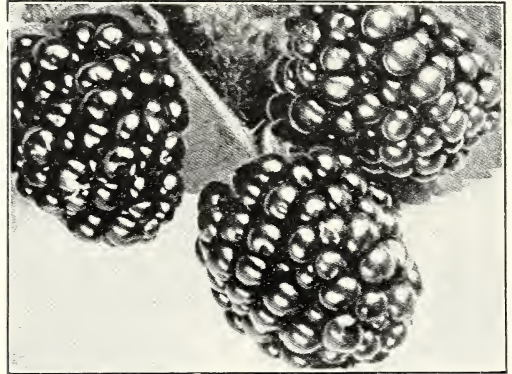
Rhubarb is so easily grown and is useful in so many different ways for pies, sauces, jellies, cakes, puddings, etc., that every garden should have at least a few roots. Easily preserved and kept fresh the entire season. Cut stalks into small pieces and put them into fruit jars. Fill the jars with cold water and seal up tightly until ready to use.

15c each; \$1.25 per 10; \$10.00 per 100. By mail add 5c each; 25c per 10

BLACKBERRIES

2 for 35c; \$1.25 per 10; \$1.50 per 25; \$4.00 per 100; \$35.00 per 1000. By mail postpaid to 4th zone, add 10c per 10.

ELDORADO—A valuable variety; medium size, jet black, melting, sweet and rich; hardy and very productive.



BLOWER BLACKBERRIES

BLOWER—"The giant of all blackberries." An upright grower; very hardy and enormously productive. Commences to ripen about the middle of July and continues for a long period.

ASPARAGUS

(Two Years Old)

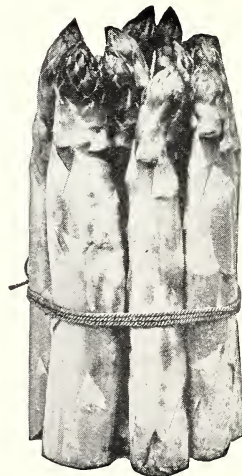
One of the most delicious vegetables, easily grown from our strong two-year-old roots.

WASHINGTON—A new rust-resistant Asparagus fast taking the lead over all other varieties for size, vigor and tenderness as well as disease resistance.

\$1.00 per 25; \$2.50 per 100; \$20.00 per 1000.

PALMETTO—Very early and of good quality.

MAMMOTH—Vigorous large shoots that remain white.



Prices of Palmetto and Mammoth

85c per 25; \$2.00 per 100; \$15.00 per 1000.

Asparagus roots by mail—Add 10c per 25; 15c per 50; 25c per 100.

MISCELLANEOUS ITEMS



Patent No. 1058327

The Ideal Pruning Saw



TRIM YOUR TREES FROM THE GROUND WITH THE IDEAL PRUNING SAW

A THOROUGHLY practical pruning tool indispensable to orchardists or anyone who has trees to trim. It is made of the best saw steel with 15 inch, double edge blade and eight foot handle; light and durable.

The saw is a self-feeding draw cut that will not pinch or bind and will cut swinging limbs that a push saw will not. One can easily remove limbs 15 to 20 ft., from the ground. By working from the ground you can do a better job of trimming, make a better shaped tree and avoid danger of falling. It will easily remove limbs 8 to 10 ft. away from the body of the tree.

It is so light and easy to handle that a woman can use it as well as a man. Highly recommended for trimming ornamental trees and shrubs.

The blade is reversible by simply removing one bolt so that both edges can be used.

\$3.00 each; extra blades, \$1.50 each

GARDEN POLICE

To Protect your Plants from Insects and Disease

The six kinds in convenient dust form in packages weighing a pound will protect your plants from nearly all forms of disease and insect pests. Easy to select the one you need.

No. 1 ENTODUST, for insects, worms and caterpillars which eat portions of the plant. 40c

No. 2 A-1 DUST, for Aphis (plant lice), plant flies, etc., which suck the plant juices. 60c

No. 3 D-6 DUST, for mildews, blights and fungus diseases on vegetables. 45c

No. 4 POMODUST, for mildews, black spot, blights and fungus diseases on roses, flowers and shrubs. 35c

No. 5 D-20 DUST. Combination dust for many forms of fungus; also to kill chewing insects. 50c
No. 6 ALL-IN-ONE DUST. 60c

NIAGARA HAND DUST GUN. Simple and easy to use in applying any dust. \$1.25 each

Granulated Peat Moss

For soils deficient in humus. The texture of soil is fully as important as the amount of plant food or fertilizer it contains. All soils need humus or decayed vegetable matter. Granulated Peat Moss is humus in its purest form. It will make heavy clay soils that pack solidly more friable, and light sandy soils more retentive of moisture. It is thoroughly decomposed, contains no disease, will hold ten times its weight of water and improve the texture of all soil, making it more spongy, friable and ideal for roots to develop in. Excellent as a top dressing for lawns, for working into the soil and for mulching. We use it constantly when planting evergreens, applying liberal quantities around the roots. Large bales weighing about 200 pounds, \$4.00 each.

TREE PROTECTORS

To keep the mice and rabbits from eating the bark off your young trees. These are made from a sheet of basswood 18 inches long and 9 inches wide. Soak well in water, then roll them around the trunks of the trees, tying them with twine. Very simple and practical.

\$25.00 per 1000; \$3.00 per 100 in quantities of 50 or more. In quantities of less than 50—5c each, postage extra.

WOOD'S GRAPE VINES

TWO YEARS OLD, EXTRA STRONG, WELL-ROOTED

EVERY city and country garden should have a dozen or more Grape vines. They can be trained up the side of any building or along the garden fences, occupying but little room and furnishing an abundance of healthful fruit.

BEST STANDARD VINES

By mail postpaid to 4th zone, add 5c each; 25c per 10.

Write for special prices on large lots.

10% Discount on all cash orders received on or before March 1st, 1929; 5% Discount between March 1st and April 1st, 1929.

CONCORD—More Concord plants by vineyardists than all other varieties combined. Berries large, black, covered with a rich bloom.

15c each; \$1.40 per 10; \$10.00 per 100

LINDLEY—Dark red, medium large berries; flesh tender, sweet and aromatic; ripens early.

20c each; \$1.75 per 10; \$15.00 per 100

LUCILE—Bright red. Very hardy and vigorous. Bunches and berries medium to large. Very productive; early bearer; good shipper.

25c each; \$2.00 per 10; \$17.50 per 100

MOORE'S EARLY—Bunch large, berries black with a heavy blue bloom; quality better than the Concord.

20c each; \$1.75 per 10; \$15.00 per 100

NIAGARA—Berries white, larger than Concord, sweet to center. Skin thin but tough. Ripens before Concord.

20c each; \$1.75 per 10; \$15.00 per 100

WORDEN—Berries, black and larger than Concord. Ripens a few days earlier; superior in flavor.

20c each; \$1.75 per 10; \$15.00 per 100

HOME VINEYARD COLLECTION

10 Two Year Grape Vines for **\$1.60**

Catalog Price \$2.00

2 Concord 2 Lucile
2 Lindley 2 Niagara
 2 Worden

By mail postpaid to 4th zone, **\$1.85**



NEW ONTARIO GRAPE

NEW ONTARIO GRAPE—They are of excellent flavor, juicy, tender, aromatic and sweet. The clusters are large and the berries are nearly as large as the Niagara.

The Ontario combines good vigorous habits of vine characteristic of the American Grape and the splendid quality of fruit found in European varieties. It is a prolific bearer and strong grower.

Ontario meets a long felt demand for a very early grape as it fruits the last of August, fully two weeks earlier than Niagara.

The New York State Experiment Station, where this grape originated, says of it, "Ontario is giving satisfaction wherever grown."

75c each; 10 for \$6.50

By mail postpaid to 4th zone add 5c each or 25c per 10.

Your stock that you sent me in the spring made very good growth. The rose, Mrs. John Laing, had six fine roses in June and on September 29th it bloomed again and had four beautiful pink roses again. I have bought roses and shrubs from other nurseries but believe it or not they did not make as much growth in two years as your stock did in one year.

Mrs. Ben F. Behling.

Milwaukee, Wis.
October 21, 1928.



“THE WOODLAWN HALF-DOZEN”

Hybrid Tea Roses

1—MISS LOLITA ARMOUR

3—SOUVENIR DE CLAUDIUS PERNET

5—MME. BUTTERFLY

2—GEN. JANSSEN

4—LOS ANGELES

6—EUGENE BOULLET

These roses have been selected with greatest care and include some of the choicest varieties. One of the most pleasing assortments you can buy, source of a constant delight and satisfaction. The best stock grown at a surprisingly low price, possible only because we sell in such large quantities. Strong two-year-old, field grown bushes, which will blossom the first year.

By mail postpaid to 4th parcel post zone \$4.75. Not prepaid \$4.50. Descriptions on Page 25.

Many other delightful varieties of Roses will be found on pages 23 to 28.



FAMOUS WOODLAWN GRASS SEED

WOODLAWN Grass Seed Mixtures are composed of the very best grades of grasses used in correct proportions to produce a thick sod of rich, deep green throughout the entire growing season. No cheap light seed of any description is used. When you buy this mixture you are paying for seed which will grow, and not a large percentage of chaff, dirt and inert matter. Critical landscape gardeners use thousands of pounds of this mixture each year. Use one pound for each 300 sq. ft.

WOODLAWN GRASS SEED MIXTURE

THE BEST FOR EXPOSED LOCATIONS

1 Lb.	\$.60 Prepaid
5 Lbs.	2.25 Not Prepaid
10 Lbs.	4.00 Not Prepaid
20 Lbs.	7.50 Not Prepaid

SHADY LAWN MIXTURE

ESPECIALLY DESIGNED FOR PLACES TOO SHADED FOR ORDINARY GRASSES TO THRIVE

1 Lb.	\$.65 Prepaid
5 Lbs.	2.50 Not Prepaid
10 Lbs.	4.50 Not Prepaid
20 Lbs.	8.00 Not Prepaid

WHITE CLOVER

The very best quality seed. $\frac{1}{2}$ Lb., 45c prepaid; 1 Lb., 75c prepaid; 5 Lbs. or more, not prepaid, 60c per Lb.

FERTILIZERS

Woodlawn Sheep Manure

VERY BEST FERTILIZER FOR LAWNS AND GARDEN

For private grounds, lawns, tennis courts, parks and golf courses, you will find our Pulverized Sheep Manure a most effective fertilizer. It is light, dry, odorless, free from seeds and all foreign matter. It will not burn the grass or plants, and quickly disappears from the surface when your lawn and garden are watered.

Pulverized Sheep Manure will keep your lawn green and make your garden produce the finest vegetables and flowers.

5 Lbs.	\$.40	100 Lbs.	\$3.00
10 Lbs.75	500 Lbs.	13.75
25 Lbs.	1.25	1000 Lbs.	25.00
50 Lbs.	2.00	2000 Lbs.	45.00

For liquid manure, 1 pound to 5 gallons of water, used once a week. For greenhouse or house plants, mix one part to ten parts of soil.

BONE MEAL

An excellent lawn and garden fertilizer especially good for bulbous plants.

5 Lbs.	\$.45	50 Lbs.	\$2.25
10 Lbs.85	100 Lbs.	4.25
25 Lbs.	1.40	2000 Lbs.	65.00