

F 499  
.E5 P6  
Copy 1

*Europa*

1903



Class F479

Book E5 P6









PICTURE SOUVENIR  
ELYRIA



HER

ENTERPRISING CITIZENS

AND HER

INDUSTRIES

PUBLISHED BY ELYRIA SOUVENIR CO ELYRIA, OHIO

H. PETERS.

THE LIBRARY OF  
CONGRESS.  
Two Copies Received  
OCT 16 1903  
Copyright Entry  
Oct 15-1903  
CLASS a XXc. No  
70512  
COPY B.




*Thomas Ely*



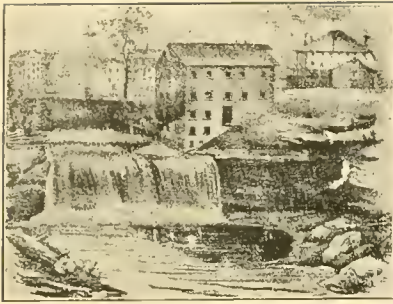
# Picturesque Elyria

A decorative flourish consisting of a central scroll-like element with two symmetrical, ornate floral or scrollwork designs extending upwards and outwards from the top corners of the central scroll.

IS DESIGNED BY ITS PUBLISHERS TO PRESENT A BIRDSEYE VIEW OF ELYRIA AND TO  
PUT IN A MORE ENDURING FORM, WITH APPROPRIATE SETTINGS,  
A FEW OF THE MORE SUBSTANTIAL ADVANTAGES  
ACCRUING TO OUR BEAUTIFUL CITY AS  
A NATURAL INHERITANCE

 ELYRIA was named after “Illyria” in France and anglicized to “Elyria” by its founder, Heman Ely, who arrived here with his colony March 17, 1817, and in 1818 built and occupied the first frame dwelling erected here. This stately mansion is still occupied as a residence by Charles T. Ely, a grandson of the City’s founder.

Elyria is located at the junction of the east and west branches of Black River, where beautiful falls, forty feet high on either branch attract the attention of thousands of visitors. Here our city was planted eight miles from Lake Erie and forty minutes ride from Cleveland on what has proven to be the great thoroughfare between New York City and the great West. Evidence of the wisdom of our pioneers, who nearly one hundred years ago selected this location for a city, is ever present. Its natural beauty and picturesqueness are remarked by every one. It is only within the past few years that our own people have come to realize the value and beauty of our parks. Cascade Park is one of the most beautiful and romantic spots in Ohio. It must be seen to be appreciated. Our broad shaded streets and beautiful homes are inviting, and many of our citizens prefer the quiet and comfort of their own homes in summer to the seductive attractions of the summer resorts.



OLD RED MILL AT THE EAST FALLS  
IN THE THIRTIES

Elyria offers the happy combination of a superior manufacturing and residence city. It is a community containing high standards of intelligence and morality, with enough of puritanism introduced by its founders to warrant the enforcement of law. A high level of integrity has ever guided the affairs of its official representatives and exerted a wholesome influence upon all its people. Progress has been the guiding star of its residents, as evidenced in its business enterprises, in its beautiful homes, its public schools, churches, public library, its parks and electric railroads, in touch with at least forty

thousand of the inhabitants of Lorain County; its newspapers ever ready to promote a healthy and progressive public spirit; its Chamber of Commerce, its gas, electric light and steam heat and a perfect water system, soon to be completed, combined with many other advantages, offer to the future resident nearly everything that modern city life can desire.

The physical make-up of Elyria, its natural advantages and its unrivaled scenery, marvellously attractive, speak for themselves and without fear of contradiction we are safe in saying, have no equals in Ohio in any city of its size. Our population numbers something more than ten thousand people. Not of the floating variety but of people who have come to stay and to enjoy not only the benefits referred to, but the solid, substantial atmosphere which has ever characterized its business features, keeping clear of reckless inflation and fictitious estimates.



WASHINGTON AVENUE IN 1850

Our healthy growth is being strengthened by banking facilities which inspire confidence in both Elyria and Lorain County entire. By merchants whose ample stocks are offered at Cleveland prices and by day labor offered in this city and Lorain, six miles away, sufficient to sustain a large population. Booms are practically unknown in Elyria and the price of a modest home, or a vacant lot defies competition.

Our shipping facilities offer special inducements. This city stands fourth in quantity of freight handled on the Lake Shore Railroad between Buffalo and Chicago and with thirty passenger trains a day on the Lake Shore and B. & O. every needed facility is offered the traveling public. Direct communication with Cleveland, Lorain, Norwalk, North Amherst, Oberlin, Wellington and Grafton is had by electric lines emphasizing Elyria as a business center.



THE FIRST BLAST FURNACE IN LORAIN COUNTY  
JUST BELOW WEST FALLS. PHOTO-  
GRAPHED IN 1836

Our pavements, which during the last ten years have greatly added to the comfort and convenience of the people, are being extended far into the country in several directions by the use of limestone in the construction, by the County Commissioners, of macadamized roads.

Lastly, our hotels, boarding houses and restaurants are up-to-date, offering every needed comfort. With a pride which we think is pardonable, we make the claim that our community for intelligence, social refinement and good order has few equals and no superior.



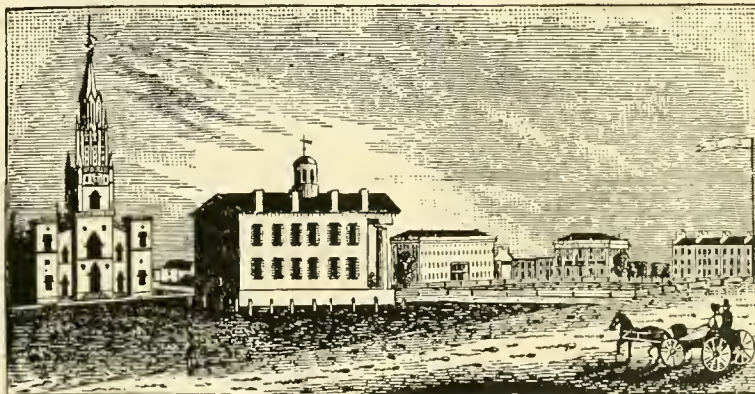
WASHINGTON AVENUE BRIDGE, EAST BRANCH,  
MAY 1, 1850

The principles of true democracy have ever been respected and majority rule has been and is being sustained.

The symmetry of the city is a notable feature of its history and its present manufacturing enterprises, recognized as the city's most valuable asset, may receive large additions without fear of destroying its advantages as a delightful city of attractive homes.



CHEAPSIDE IN 1873



COURTHOUSE AND PUBLIC SQUARE, ELYRIA, IN 1846



*Heman Ely*



WILSON ROGERS  
SEC'Y



MRS. O. H. MONROE  
M'G'R.



A. R. WEBBER  
PRES.



J. F. BURKE  
PRES.



C. M. GROTY.  
TREAS.

## ELYRIA'S MANUFACTURING INDUSTRIES.

**W**HILE the influential men of Elyria, in its earlier history, were content with a beautiful village and made no effort to stimulate manufacturing industries, fearing it would make its attractiveness as a residence town less pronounced, the dominant spirits of to-day have caught step to the music of "expansion" and are working, through the Chamber of Commerce, and every other legitimate source to emphasize Elyria's superior advantages as a manufacturing city.

Among our older industries are The Western Automatic Machine Screw Company, whose products go to every part of the globe, furnishing steady employment to about one hundred and forty men; The Topliff & Ely Company, manufacturers of Bow Sockets and other specialties, employing upwards of fifty men; The Elyria Stone Company and The Grafton Stone Company, with large quarries at Grafton and Elyria, each employing upwards of three hundred men, and The Federal Manufacturing Company, manufacturers of bicycle saddles, tool bags, etc., employing from one hundred and seventy-five to two hundred and fifty men.

Among the newer industries which have added new life to Elyria and materially swelled its population are The Elyria Iron and Steel Company, manufacturers of tubing and angle iron, which expects to employ from two hundred to six hundred men when fully developed; The Columbia Steel Works, manufacturers of cold rolled steel to employ about one hundred and fifty men; The Worthington Manufacturing Company, manufacturers of a full line of golf goods, and the Duplex Foundry; The Ray Stocking Company, manufacturers of hosiery employing about one hundred persons; The Fox Furnace Company, employing about one hundred men; The Harshaw, Fuller and Goodwin Works, manufacturers of chemicals and refined glycerine; The Elyria Canning Company, The Weller Engineering Company, manufacturers of channeling machines and other quarry machinery; The Elyria Engine Company, manufacturers of gasoline engines; The Worth Manufacturing Company, manufacturers of ladies' skirts and children's waists, and several other smaller manufacturers materially add to the total output of our products and help to keep our available day labor almost wholly employed and at fair and remunerative wages.





ELY PARK  
SOLDIER'S MONUMENT



CASCADE PARK  
LODI STREET FALLS, LOOKING SOUTH



CASCADE PARK  
CASCADE STREET AT THE JUNCTION



HON. A. R. WEBBER,  
COMMON PLEAS JUDGE





**THE OLD LADIES' HOME**

The Old Ladies' Home is the result of faithful, aggressive work on the part of some of Elyria's women. These public-spirited women formed an association and set out to do a great work with no resources but willing hands and earnest hearts. This handsome home, which stands on the corner of West Second and West avenue, is a lasting and useful monument to their efforts. The building was opened about January 1, 1902. It is fitted out with all modern conveniences and is in charge of Miss Chambers, a thoroughly competent matron.



**CASCADE PARK**  
VIEW OF EAST FALLS AT LOW WATER



**ELYRIA CITY HOSPITAL**  
WEST AVENUE. OPENED FOR PATIENTS DECEMBER 1, 1901.  
MRS. FRANCES MOREHOUSE, MATRON



Mr. Chas. E. Hancock



Mr. Chas. A. Evert



Mr. Theodore T. Robinson



Mr. William E. Denigale



Mr. Carlton A. Squire

THE ROBINSON & HANCOCK COMPANY



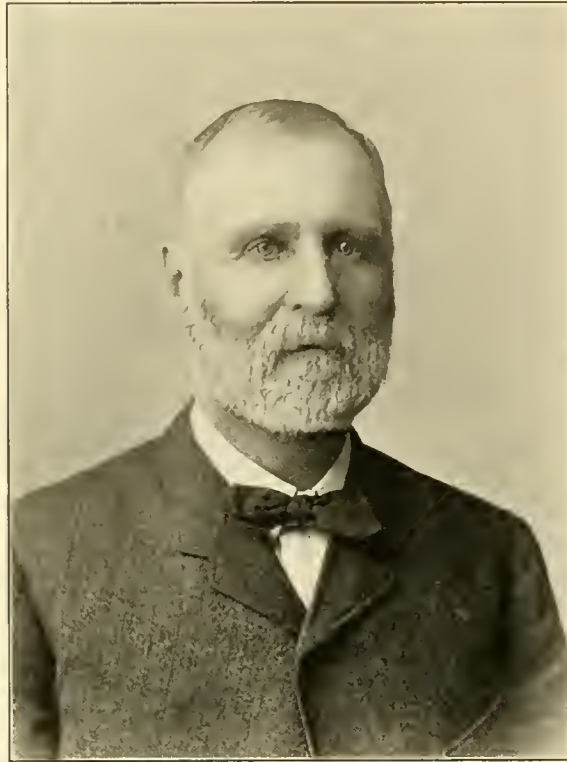
#### THE ROBINSON AND HANCOCK COMPANY

One of the largest retail firms of Lorain County is The Robinson and Hancock Company, Clothiers and Men's Outfitters, with stores at Elyria, Lorain and Wellington. The accompanying cut shows their new Elyria store, corner Broad and Mill streets, as it will look when it is completed. They have recently put in an entire new front, giving them about seventy feet of continuous window display, besides several large outside show cases, all brilliantly lighted by electricity. These, together with large elaborate new signs, make their front one of the most attractive in town.

The addition to the rear of their store is well under way and when completed will give them a depth of 165 feet, making the largest and best lighted room of its kind in Lorain County. The store is divided into two parts, the front being taken up with the hat and cap and the furnishings departments. Further back are the men's and boys' clothing parlors, lighted by six large plate glass windows.

This firm is composed of young up-to-date business men, who believe that what is worth doing at all is worth doing well. Every customer receives the same courteous treatment, and the lines of merchandise carried are only those of well known and reliable manufacturers.





HON. THOMAS FOLGER  
MAYOR OF ELYRIA



RESIDENCE OF HON. THOMAS FOLGER



LORAIN COUNTY COURT HOUSE



RIFFLES, SOUTH ELYRIA



**THE ELY REALTY BLOCK**

The Ely Realty Company's Power Block was built in 1900; is strictly fire proof and probably the most substantial building in Lorain county. Electrical power is furnished from this block for two planing mills, every printing office except one in the city, and for many other industries both in the block and elsewhere. Electricity is also supplied for lighting not only the four blocks of The Ely Realty Company, but for a large portion of the commercial lighting of the city. The exhaust steam is utilized for heating six business blocks. Only part of the electrical equipment has been installed and in the near future the present power will be thribbled.



## R. M. SUMMERS & SON



R. M. SUMMERS

R. M. Summers, the senior member of this firm, served ten years in every branch of the retail trade, then for thirteen years he traveled all over the United States from Maine to California, part of Canada and part of Mexico, in the wholesale piano business, representing the A. B. Chase Piano Co., of Norwalk, O.; The Shaw Piano Co., of Erie, Pa.; and the Waterloo Organ Co., of Waterloo, N. Y. During this time he visited every piano factory in the United States and carefully studied the mechanical construction and tonal qualities of the different pianos. Then he went into the Waterloo piano factory and worked at the bench learning tuning and regulating, and finally, five years ago, decided to go into the retail piano business in partnership with his son.



H. W. SUMMERS

The junior member, Mr. H. W. Summers, after graduating in the Sandusky Business College, took a position in the Shaw piano factory at Erie, Pa., where he worked in the fly finishing room for nearly a year, after which he secured a position as bookkeeper for the Detroit Music Co., of Detroit, Michigan, staying with that firm over two years, and finally resigned his position to go into the retail business. The

above firm did a large wholesale and retail business in pianos, organs, sheet music and musical merchandise, and being bookkeeper, he became thoroughly posted in all the minute details of a large, general music business. Two years ago they moved their store to Elyria and are well pleased with their reception and with the confidence shown by the people of this county.



INTERIOR OF SUMMERS & SON'S MUSIC STORE



**HON. M. H. LEVAGOOD**  
**MAYOR OF ELYRIA FROM 1895 TO 1899**

Actively identified with the Manufacturing, Banking and Industrial interests of Elyria, and a prominent factor in its church, social and philanthropic activities.



**RESIDENCE OF HON. M. H. LEVAGOOD**





**THE WESTERN AUTOMATIC MACHINE SCREW CO.**  
**ELYRIA, OHIO.**

This business was originally started in Cleveland, Ohio, in 1870, moved to Elyria, Ohio, in 1874, reorganized about nineteen years ago, with ample capital, and has now become the second largest factory in our country, devoted exclusively to the manufacture of screws and kindred specialties used in the construction of engines, printing presses, electrical appliances, musical instruments, bicycles, sewing machines, shears, locks, pistols, guns, optical work, watches, clocks and general machine shop supplies. Also the finer class of small hardware made from iron, steel, brass, German silver, aluminum, etc.

All the buildings are substantial brick structures of the following dimensions: Main factory, 50x150 feet, with an "L" 40x90 feet, four stories high; engine house, 16x38 feet; blacksmith shop, 23x70 feet, one story; machine shop, 35x86 feet; office and warehouse, 35x105 feet; two stories high. The buildings are of modern and best construction, and every device contained therein that can facilitate the greatest degree of perfection in the manufacture of their goods.

The present officers of the company are as follows: President, Geo. A. Fairfield, of Hartford, Conn.; Secretary and Treasurer, S. H. Curtiss, of Hartford, Conn; Correspondent Secretary, M. H. Levagood, of Elyria; Superintendent, R. D. Perry, of Elyria.



**HOTEL ANDWUR**  
W. J. HILLIAR AND H. FREDERICK, PROPRIETORS



D. C. BALDWIN'S RESIDENCE, WASHINGTON AVENUE



EAST FALLS FROM REAR OF  
D. C. BALDWIN'S HOME



GROTTO IN REAR OF  
D. C. BALDWIN'S HOME





David J. Nye



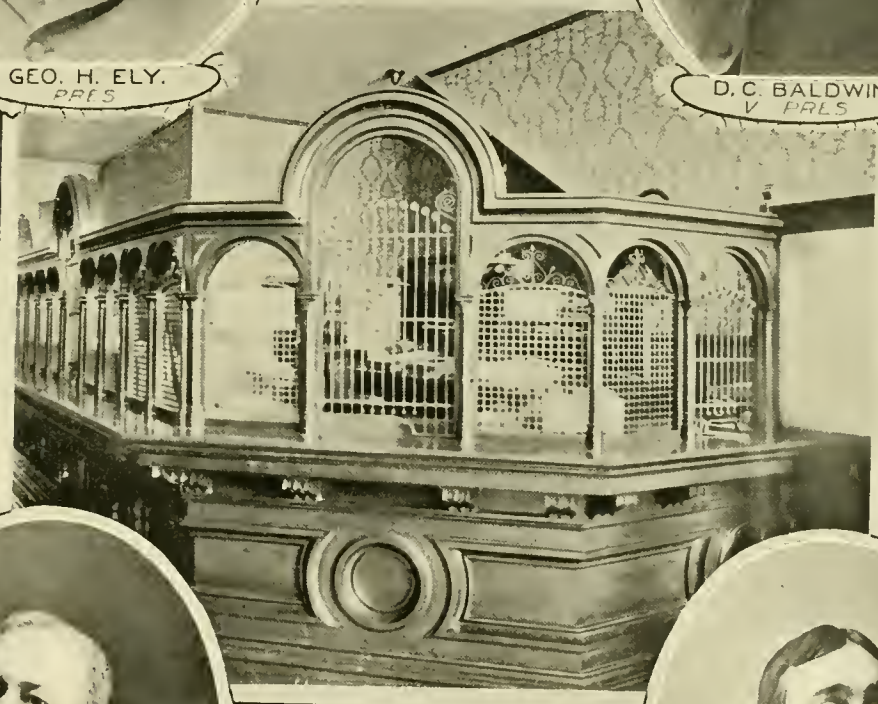
CASCADE PARK  
SIDE VIEW OF SPHINX ROCK



GEO. H. ELY.  
PRES.



D. C. BALDWIN.  
V. PRES.



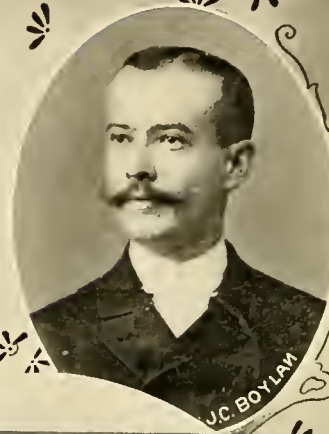
E. E. WILLIAMS.  
CASHIER.



S. H. SQUIRE, JR.  
ASST. CASHIER.

NATIONAL BANK OF ELYRIA

DIRECTORS:—GEO. H. ELY, D. C. BALDWIN, CHAS. T. ELY, W. E. BROOKS, W. E. MILLER, E. H. HINMAN, M. H. LEVAGOOD



**BOYLAN BROS.**

DEALERS IN GROCERIES, CHINAWARE, ETC.

Progressive, conservative, strict attention to business, and the wants of their patrons is the shibboleth of these brothers. They commenced business in 1861 with small capital; now own their present commodious and up-to-date store. Merit wins success, and they deserve it.



GEO. W. PHILPOTT



The firm of Geo. W. Philpott & Co. are conducting the oldest shoe house in Elyria, being established by Mr. Philpott's father in 1873. This store is conceded to be the largest, lightest and best appointed of any shoe house in Lorain county, and they enjoy the distinction of doing "the" shoe business of Elyria. The motto of "Honest values" has never been deviated from and to this Mr. Philpott attributes his success.



HUBERT DAY



Dealer in general hardware, machinists' tools, paints, oils, etc., and manufacturer of No. 1 babbitt metal. By carefully studying the wants of his customers, supplying first class goods, and by courteous treatment and honorable dealing he merits the success he has attained.



DANIEL FREESE & SONS  
CLOTHIERS AND MEN'S OUTFITTERS



LILLIAN E. HUNTINGTON  
WITH "MOLLIE" AND CART





### NICHOLS BLOCK

#### DANIEL FREESE & SONS CLOTHIERS AND MEN'S OUTFITTERS

This half of the building is occupied by Daniel Freese, the clothier. The business was commenced on September 11, 1890, and at once secured a good patronage which has steadily increased. Mr. Freese's thirty years' experience as a clothier and the assistance of his two sons, Theodore and Carl Freese, who have grown up in the business, assure his patrons the best possible attention to their needs. His stock comprises hand-made tailored clothing, gents' furnishing goods, hats and caps, trunks, valises, etc.

Mr. Freese was formerly located at North Amherst where he enjoyed the confidence of a host of patrons, who are pleased to note his prosperity in Elyria.

#### ELDRED & CO.

The enterprising firm of Eldred & Co. was established in 1885, and under the management of Wm. F. Eldred has proven in every sense a credit to our city.

In addition to books and stationery, this firm carries a complete line of pictures, frames, mouldings, fountain pens, office supplies, mirrors, pocket cutlery, safety razors, etc. C. M. Eldred has for the past fifteen years manufactured picture frames in connection with this firm's business.

This firm is also headquarters for a circulating library of the latest fiction giving the public an opportunity to have at all times the very newest books, as it is constantly being added to from the latest works.

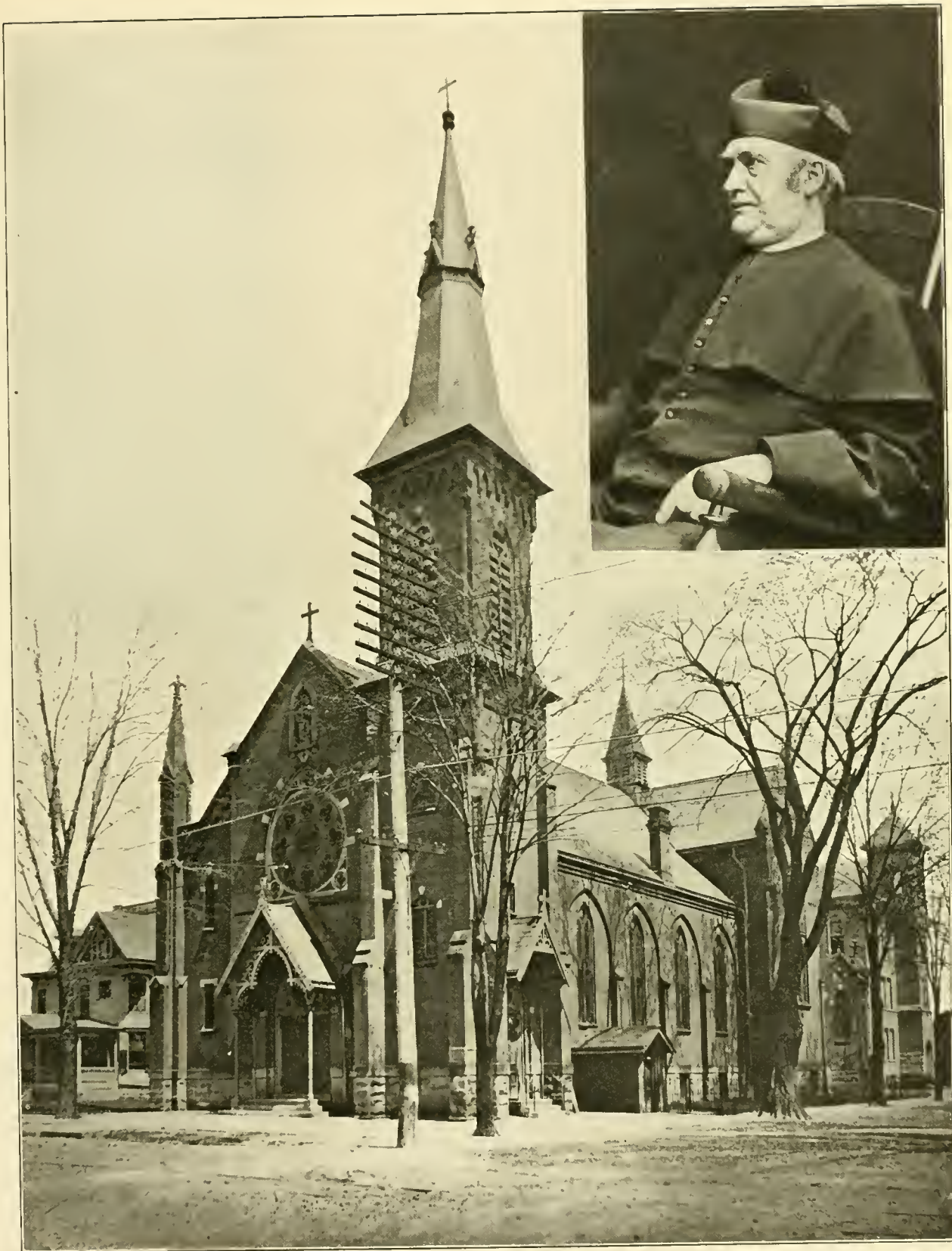
The firm also has a magazine library carrying all the most popular magazines upon a circulating library plan.



DR. P. D. REEFY



RESIDENCE OF DR. P. D. REEFY



FATHER JOHN T. SCHAFFELD  
AND HIS CATHOLIC CHURCH, SHOWING ALSO A PARTIAL VIEW OF THE SCHOOL HOUSE AND PARSONAGE



F. C. CAYWOOD,  
PAINTING, DECORATING AND  
SIGN WRITING



EXTERIOR VIEW OF CAYWOOD'S STORE



CASCADE PARK, ENTRANCE TO PARK FROM GLENDALE COURT, SHOWING NATURAL BRIDGE AND  
STONE STEPS LEADING TO HARMONY HILL.





R. PFUNDT

**PFUNDT & SCHULTZ,**

**CONTRACTORS  
AND BUILDERS**

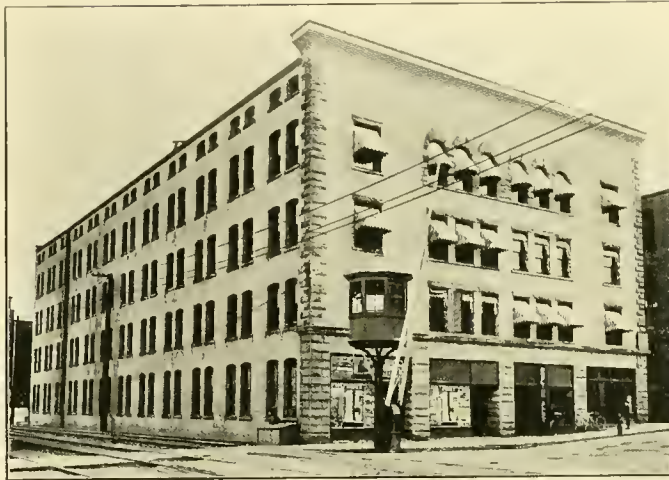
**BRICK AND STONE MASONS, SIDEWALKS AND ALL  
KINDS OF BRICK AND STONE WORK**

PHONE 695

ELYRIA, OHIO



HENRY SCHULTZ



THE ELY POWER BLOCK, BUILT IN 1900



TUBE MILL  
OF THE ELYRIA IRON AND STEEL CO., BUILT IN 1902

**T**HESE beautiful and substantial buildings were erected by this firm and stand as monuments to their ability. There are also many handsome business blocks and residences throughout the city that are the result of their untiring labor.



JOHN C. LETSON, AGENT FOR THE U. S. EXPRESS CO.



FOOT-BRIDGE FROM LOOKOUT ROCK



ELYRIA PLUMBING, HEATING AND ELECTRIC CO.

BELL PHONE BLACK, 78

RAWSON PHONE, 020

O. J. SHAFER



W. C. LEEDALE



CASCADE PARK  
EGYPTIAN SPHYNX, HEAD OF BASIN



The clothing firm of F. H. Foster & Co. is one of the oldest in this part of the state, having celebrated its twenty-fifth anniversary in February, 1903. They occupy a room 30 by 136 feet and basement. They pride themselves in keeping a modern up-to-date clothing store, complete in all departments. The members of the firm are Mr. F. H. Foster and Mr. N. S. Fitch.





W. B. JOHNSTON

ATTORNEY-AT-LAW

CITY SOLICITOR



FRANK FAUVER  
CITY AUDITOR





#### W. R. HUNTINGTON

Commodore W. R. Huntington comes from English-Scotch ancestry. His great grandfather William Huntington was an admiral in the English navy. His grandfather Hugh Huntington was a professor of theology in Preston College, Lancashire, England. His father John Huntington came from England in 1853 and settled in Cleveland, Ohio. He was a member of the council of that city for fourteen years, one of the organizers of the Standard Oil Company and one of the foremost and wealthiest men of Cleveland.

W. R. Huntington was born September 3rd, 1857, graduated from the public schools of Cleveland after which he completed a regular course at the Spencerian Business College. He was Deputy County Treasurer of Cuyahoga County for four years. Was a member of the hardware firm of McIntosh-Huntington from which he retired April 1st, 1903. He is a veteran in the F. A. M. and a life member of the Scottish Rite and Consistory Orders and a Noble of the Mystic Shrine. He is now Exalted Ruler of Elyria Lodge Number 465 B. P. O. E. to which position he has been three times successively elected. He was Commodore of the Inter Lake Yachting Association in 1901. He is an enthusiastic sportsman and one of Elyria's most valuable and public spirited citizens.



W. R. HUNTINGTON'S YACHT "THELMA"



VIEWS OF COL. W. R. HUNTINGTON'S HOME. INTERIOR AND EXTERIOR.



EDWARD E. CRITZ

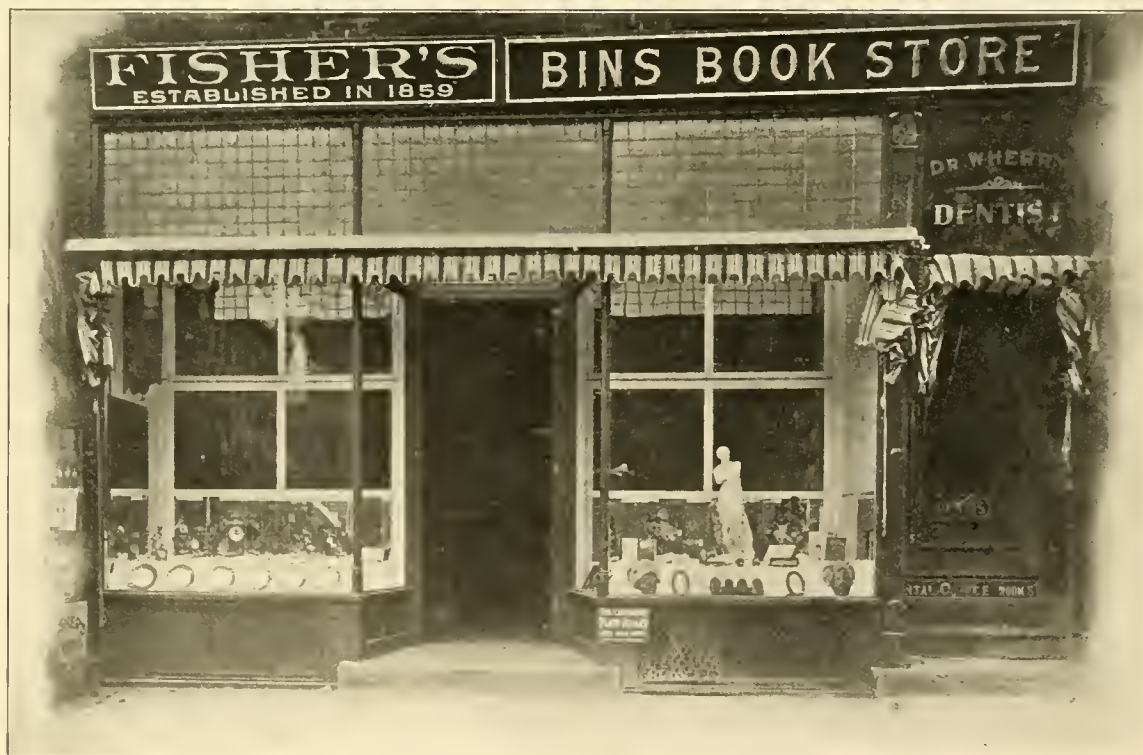
The Fisher Jewelry Store, established in 1859, 505 Broad street. Edward E. Critz succeeded in 1897. This store was established nearly half a century ago and is therefore one of the oldest stores in Northern Ohio. A separate and complete department is maintained for the fitting and adjusting of glasses.



J. C. BINS

The J. C. Bins Book Store, formerly known as the City Book Store is an old, reliable establishment. It was purchased by its present owner, J. C. Bins, in 1894.

This store is headquarters for newspapers, magazines, books and stationery. A full line of picture frames and mouldings are also carried by this enterprising merchant





CHARLES C. ENSIGN  
FURNITURE DEPARTMENT

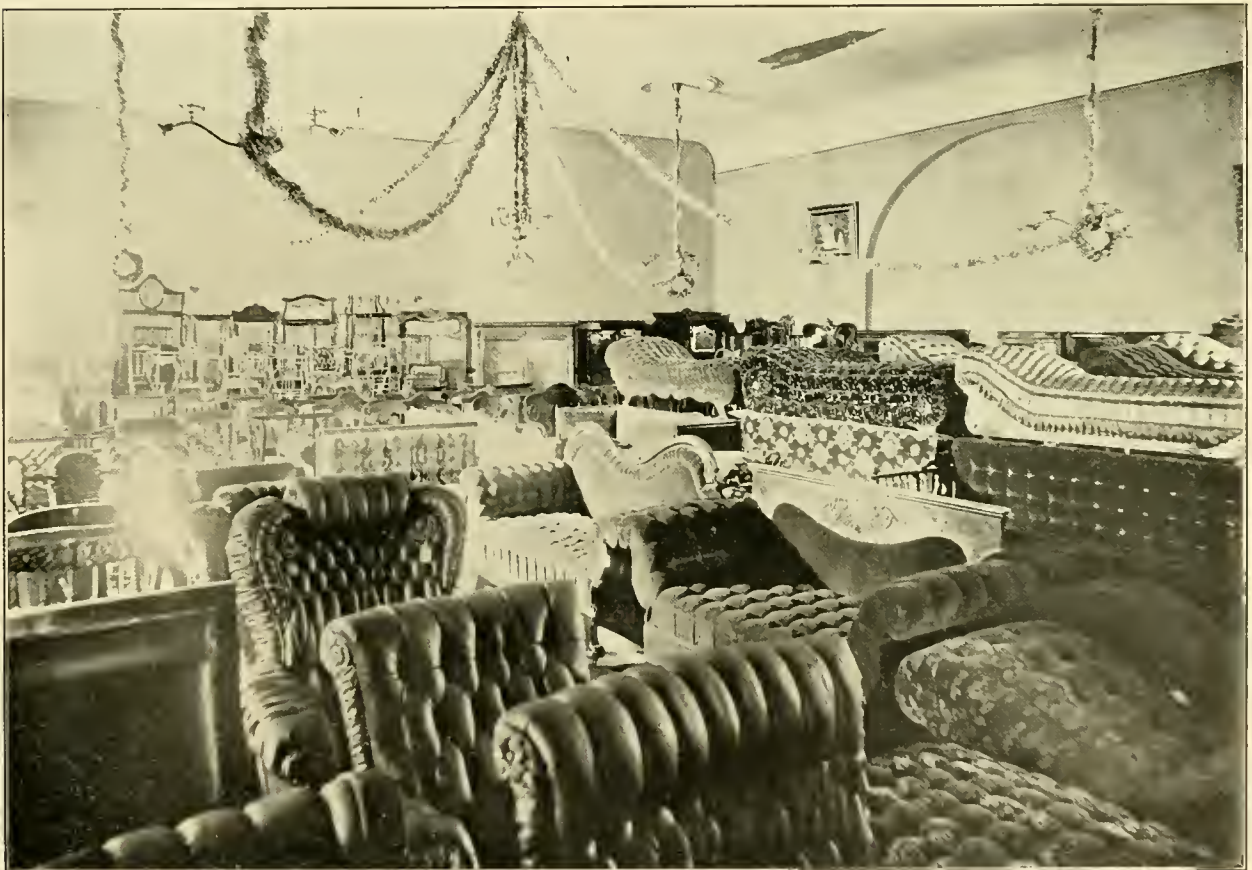
1834-1903

Established in 1834 by Samuel and Caleb Goodwin. Succeeded by Samuel Goodwin, Lorenzo Clark, William Hollister, Schneerer & Waldeck, William Schneerer, Leonard G. Hamilton, Ensign & Wilkins.

It is with pride that we refer to our predecessors who so greatly assisted us in making this the largest and best equipped Furniture and Undertaking business in Lorain County.



CHARLES H. WILKINS  
THE FUNERAL DIRECTOR



THIRD FLOOR OF ENSIGN & WILKINS, THE FURNITURE DEALERS AND FUNERAL DIRECTORS  
SHARP BLOCK



HENRY J. EADY



H. J. Eady was born in Northamptonshire, England. When a young man he came to Elyria and engaged in the drug business as clerk. In 1873 he established his present business, beginning in a little one story frame structure on Cheapside, the site of his present store. He gradually increased and enlarged his business until 1886, when through lack of room and desire to improve the street and town he built the three story brick building in which his store is now located. April 1st, 1903, Mr. Eady celebrated his 30th business anniversary by holding on that day a sale to start a fund for a permanent city hospital.

During his career in the drug business Mr. Eady has originated several valuable preparations which have become well and widely known.



LODI STREET FALLS IN WINTER



**HENRY W. INGERSOLL**

Graduated from the law department of the University of Michigan in 1885 and admitted to the bar in Ohio the following December.



**A. E. LAWRENCE**  
**ATTORNEY AT LAW**

SUITE 200, ELYRIA BLOCK      PHONE, ELYRIA 000





ANTHONY SEIDING

ATTORNEY AT LAW



CASCADE PARK

SUSPENSION BRIDGE, CONNECTING CASCADE STREET AND HARMONY HILL—HARMONY HILL END





H. M. ADDRESS



INTERIOR VIEW AT H. M. ADDRESS' HOME

H. M. Address was born in Henrietta Township, this county, June 10, 1855. Came to Elyria April 1st, 1876. Carried on a livery and vehicle business until February 6th, 1902. He has always manifested a lively interest in the welfare of Elyria and is now a member of the board of public service.



RESIDENCE OF H. M. ADDRESS



**WEST FALLS AND LODI STREET BRIDGE**



**RESIDENCE OF HON. GEORGE H. ELY**



GEORGE T. BIGGS



J. G. EVERARD



The firm of Biggs & Everard, merchants, is an important factor in the Dry Goods trade of Elyria. Mr. Biggs is regarded as a skillful buyer and his house is always up-to-date in its selections.

In their present location, No. 12 and 14 Cheapside, you will find always an ample stock of merchandise, consisting of dry goods and notions, cloaks, wraps, suits, and ready-to-wear garments.

This firm have always been popular with their business associates and their score of employees, who are favorably known to the public, assures their patrons of fair and courteous treatment.





GEORGE RIMBACH

RIMBACH BROTHERS  
FURNITURE DEALERS  
AND  
UNDERTAKERS  
582 WEST BROAD STREET    PHONE 1081



E. C. RIMBACH



F. H. LEWIS  
PLUMBER  
GAS, STEAM AND HOT WATER FITTING  
SANITARY PLUMBING A SPECIALTY  
340 BROAD STREET



SOME PICTURESQUE SCENES IN AND NEAR ELYRIA



**F. M. STEVENS**  
**ATTORNEY AT LAW**  
 290-294 LEX POWER BLOCK  
 Admitted to practice May 28, 1897



**H. A. DYKEMAN**



**H. A. DYKEMAN'S STORE, BROAD STREET**

H. A. Dykeman, dealer in drugs, patent medicines, perfumes, etc.

The best quality of goods, carefully prepared prescriptions, and diligence in business are the requisites which have brought him success and a recognized place among business men of Elyria.

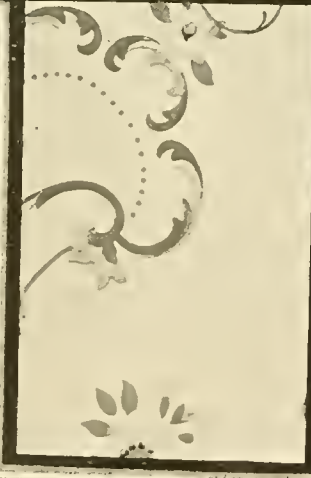


TELEPHONE 775  
BELL RED 177

DISPLAY ROOMS OF  
**WEAVER & GRATZ, CONTRACTORS AND ENGINEERS**  
HEATING, VENTILATING PLUMBING AND DRAINAGE

CENTURY BUILDING





EXTERIOR VIEW  
D. LEWIS & CO.'S STORE

HOME OF D. LEWIS  
CLOAK AND SUIT ROOM OF D. LEWIS & CO.'S STORE





D. Lewis & Co.'s Dry Goods store is one of Elyria's most representative houses in the line of dry goods, carpets and cloaks. The business was started six years ago and has since grown to a size that entitles it to rank as a metropolitan store in every respect. A stock of the latest novelties in imported and domestic dry goods is carried, together with everything usually found in stores catering to a select trade. This progressive firm are thoroughly in touch with the latest styles and are constantly in receipt of the latest patterns immediately upon their appearance in the Eastern market. Ladies desiring the finest goods at reasonable prices will find the line carried at D. Lewis & Co.'s to embrace



INTERIOR VIEWS OF D. LEWIS & CO.'S STORE



an up-to-date stock in every respect. The firm have every facility at their command to procure not only the most advanced styles but as full an assortment as any store in this section. The value of an institution lies largely in the management, and in this respect this store is especially fortunate. Mr. D. Lewis has those characteristics which insure increasing patronage, and in his able ass tant, Mr. Williamson, he has an able co-laborer. The premises occupied, as may be seen from the accompanying illustrations, are large and commodious and afford ample room for the heavy stock carried. Visitors to Elyria should not fail to visit this attractive store.



INTERIOR VIEWS OF D. LEWIS & CO.'S STORE



JUDGE HINMAN

**HON. E. H. HINMAN**

E. H. Hinman, whose picture accompanies, is the present probate judge and has occupied that responsible position for over twenty-one years, fulfilling its duties with marked courtesy and ability. He was elected in 1881 when mayor of North Amherst, at which place he was practicing law. His boyhood was passed in Oberlin where he has many fast friends.



RESIDENCE OF E. E. WILLIAMS



AT THE BASE, OUTLOOK ROCK



The above picture is a view of the new Columbia Steel Works, built by F. E. Wolf, contractor. Mr. Wolf has built many of the substantial blocks and residences of Elyria.



SIDE VIEW OF WEST FALLS



VIEW OF WEST FALLS FROM CABLE BRIDGE

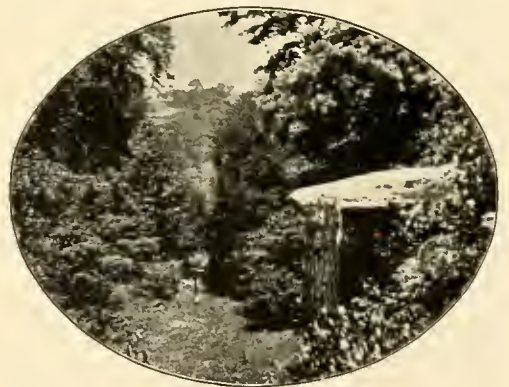


TABLE ROCK WITH PICNIC GROUNDS BELOW

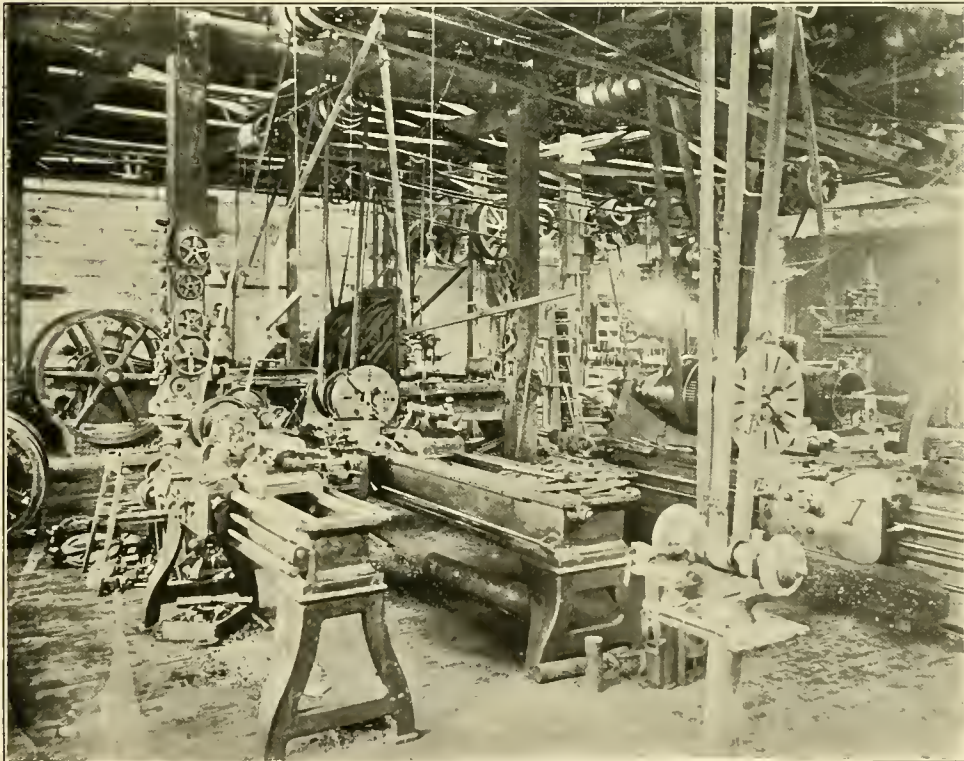
The Weller Engineering Co.'s works are located on Elm street and on the L. S. & M. S. R. R.

Besides other things this firm manufactures Channeling Machines, Hoisters, Derricks, Steam Drills, Stone Saw Machines, Grinding Machinery and Traction Clutches

Mr George L. Weller is President and Manager.



GEORGE L. WELLER



MACHINE SHOP OF THE WELLER ENGINEERING CO.



WM. A. BRAMAN  
PRESIDENT

WM. HELDMYER  
2ND. V. PRES.

JNO. LERSCH  
1ST. V. PRES.

W. C. LEMASTER  
CASHIER

**THE ELYRIA SAVINGS & BANKING COMPANY**

AUTHORIZED CAPITAL, \$100,000.00  
SURPLUS AND UNDIVIDED PROFITS, \$10,000.00

ORGANIZED FEB. 12, 1901  
OPENED FOR BUSINESS APRIL 8, 1901 ASSETS, \$690,916.78



**DR. H. D. GREER**

Dr. Greer located in Elyria March 4, 1898. His two years experience in a Pittsburg Dental College and 18 years of active practice, applying up-to-date methods, best materials and workmanship, has created an exclusive patronage and merited success.



**RESIDENCE OF DR. GREER**



**INTERIOR OF OPERATING ROOM**



**INTERIOR OF RECEPTION ROOM AND TOILET ROOM**



HARRY H. SMITH



CARPET STORE, CHEAPSIDE

The firm of Harry H. Smith & Company, retailers and wholesalers of furniture, carpets, curtains, wall paper and general household goods, is one of Elyria's most substantial business firms. The Cheapside store was founded September 17th, 1892, by Harry Smith. William F. Smith, a brother, was taken into the partnership in this store January 23, 1899. The business grew and prospered and July 19, 1899, Mr. H. H. Smith opened a furniture store in an old frame building on East Broad street, but this building being too small to accommodate the rapidly growing business was moved back and a fine three story brick block erected by them on the same site. Business has again outgrown quarters and in the near future they expect to erect another building.

Both stores have enjoyed a liberal patronage and you will always find these enterprising young men first for improvements and progressive business methods.



FURNITURE STORE, EAST BROAD STREET



WILLIAM F. SMITH





*Geo. H. Chamberlain*  
STATE SENATOR, 75TH GENERAL ASSEMBLY



**DISTANT VIEW OF COM. W. R. HUNTINGTON'S HOME ON EAST BRIDGE STREET**



**THE EAST BRIDGE STREET BRIDGE**

This bridge enjoys the distinction of being the boldest structure in the world. It has a span of 150 feet with a rise of only 22 feet. Its skew-backs are hewn out of solid rock provided by nature.



**LEE STROUPE**  
**ATTORNEY AT LAW**

HOME PHONE 544

NO. 13 SHARP BLOCK



**CLEMON H. SNOW**

Born in Lorain County, was six years County Surveyor of Lorain County and sixteen years City Engineer of Elyria. Now engaged in a general surveying and engineering business.



**CHARLES A. CAHOON**

REFLECTED CONSTABLE OF ELYRIA IN THE SPRING OF '91



**FRANK WILFORD**

ATTORNEY AT LAW

Born on a farm near North Amherst, Ohio, graduated from Elyria High School in 1893 and from Oberlin College in 1898, studied Law with A. R. Webber, passed bar examination at Columbus in 1900 and has been in active practice since at Elyria.



**W. F. HAFNER**

HARDWARE DEALER, NO. 367 EAST BROAD STREET

Mr. Hafner is familiar to the people of Elyria in connection with the hardware business, having been employed for 17 years with the hardware store of A. G. Carpenter, and his successor, Hubert Day. After traveling for two years he has entered in business for himself in Elyria. He has been prominent in connection with the fire department for a number of years, having acted in the capacity of foreman, secretary and treasurer, at different times.



### THE ELYRIA HARDWARE CO.

Is one of the substantial institutions of our city. Since its establishment in 1895 its business has steadily increased until today it ranks well with the largest retail hardware houses in the country. They make a specialty also of plumbing, and steam and hot water heating and carry a large line of pipe and fittings, together with plumbing goods of every description. They also do all kinds of roofing and furnace work, and are sole agents here for "The Fox Furnaces" which are made in Elyria and are equal to any furnaces made. They also carry the finest line of stoves and ranges for hard or soft coal, and natural or artificial gas. Their store is located at No. 523 Broad street.



RAILROAD BRIDGE OVER EAST BRANCH OF BLACK RIVER





HON. GEORGE H. ELY  
PRES. OF THE ELY REALTY COMPANY



HON. D. C. BALDWIN

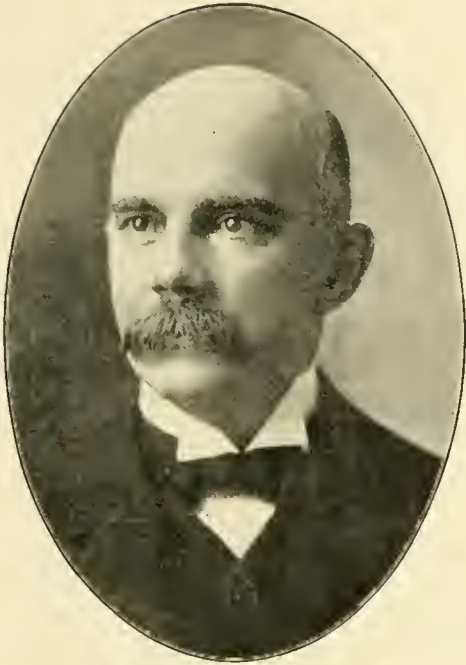


### CASCADE PARK

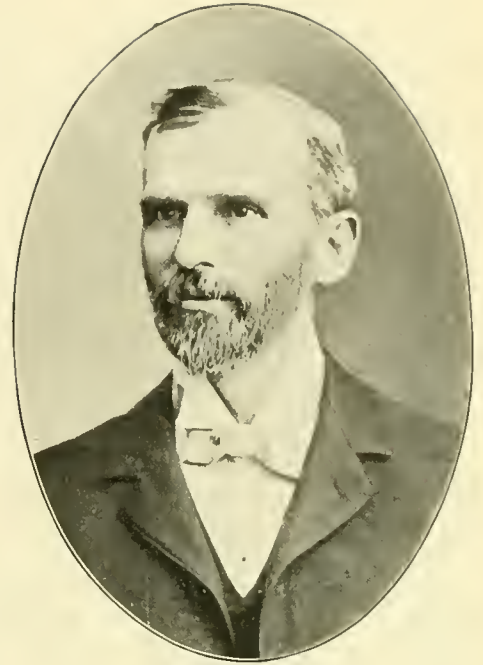
**A** WALK of three minutes from the center of Broad street down Mill and Lodi streets, brings the pedestrian to the Lodi street entrance to Cascade Park, one of the most beautiful, romantic and picturesque parks of its size in America. The park contains about eight acres, located above and below the junction of the east and west branches of Black river. It was deeded to the city of Elyria by the Ely Realty Co., of which George H. Ely is president, and the only obligation connected with this generous gift was the expenditure by the city of \$300 per year.

The property, since it came into the hands of the city, which was in January, 1900, has been under the control of three park commissioners, namely, W. G. Sharp, J. H. Leonard and F. S. Reefy, who obtained the valuable services of J. E. Gray as park warden. It is needless to mention the merits of these men as being the ones for the positions as a walk through the park will show one a place changed from a wilderness of briars, weeds, old logs and rubbish to its present beauty. They have been helped some through the generosity and public spirit of Hon. D. C. Baldwin and W. G. Sharp in the gift of money of no small amount, also by land and time by J. E. Gray. Prof. Reefy has put in many an hour in helping to improve and beautify it. J. H. Leonard has been faithful in giving his time and advice as secretary of the park commissioners.

About equal distances above the junction on each branch of the river are located the east and west falls, and every foot of these gorges is represented by jagged rocks and wild un que scenery. Here can be seen scenery to please the eye of all. The rocky crag or gorge, the overhanging rock and cave, the hill or dale, the water fall, the rapids or the quiet lake, and the cold spring water, the large and growing timbers of all descriptions, or the shrub and flower, all can be seen in beautiful Cascade Park, where dame nature seems to have done her best to put in a little of everything for the pleasure of man. Here are found evidences that the redman ages ago made it his rendezvous for centuries. Here can be seen where he had his camp fires and among the rocks his war-hoop resounded and the smoke of peace curled, and through the untiring efforts and skill of Park Warden J. E. Gray and the park commissioners all this has been made accessible either by foot or conveyance through the many winding paths or beautiful drives in the last three years. No other city of its size is able to boast of a more fascinating, restful park, nor one where scenery has more majesty and commands a greater interest.



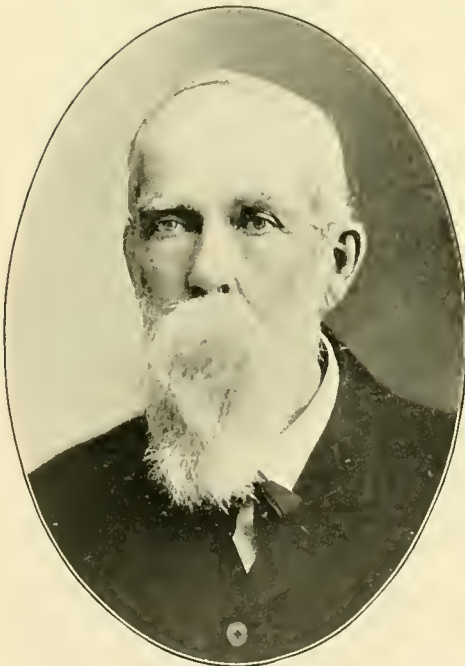
W. G. SHARP



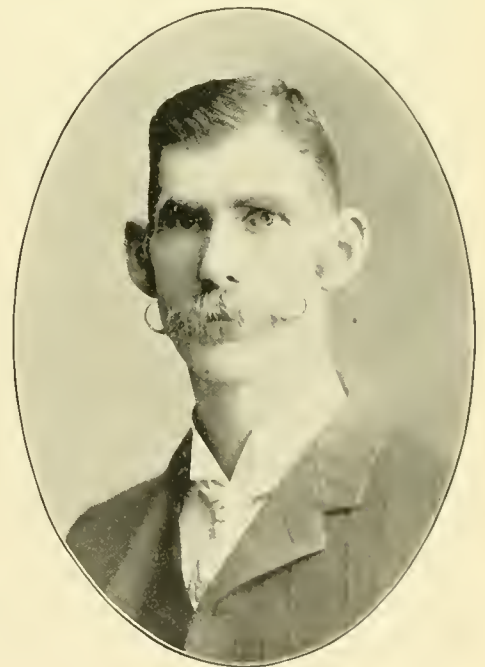
J. H. LEONARD, Secy



PARK BOARD, MEN WHO HAVE HELPED TO MAKE  
"CASCADE PARK" WHAT IT IS TODAY



F. S. REEFY, Treas.



J. E. GRAY, PARK WARDEN



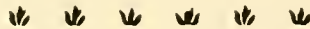


### THE ELYRIA BUSINESS COLLEGE

The view shown above is a photograph of the Manufacturing Department of that most excellent institution, The Elyria Business College. This school was established about eight years ago, and rapidly gained public favor on account of its thoroughness. From 150 to 175 students are annually enrolled. Individual instruction is made a strong feature of the work.

A fact worthy of note concerning this school is that every graduate secures employment. The college stakes its reputation on every graduate, and business men are constantly employing bookkeepers and stenographers on the recommendation of the college officials.

Catalog, etc., may be obtained by writing to Miss Elcie M. Johnston, President of the college.



CASCADE PARK.  
VIEW OF LARGE CAVE AT WEST FALLS



CASCADE PARK  
SCENE BELOW L. S. & M. S. BRIDGE





ROSS FAUVER



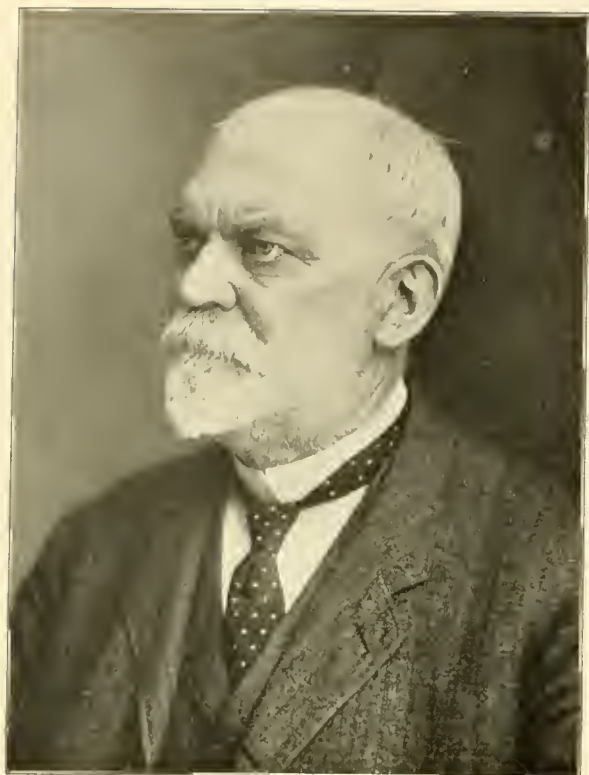
FAUVER & ROBSON  
CLOTHIERS  
AND  
FURNISHERS  
119 BROAD ST.    PHONE 201



EDD ROBSON

This firm, one of the most popular and substantial business firms of Elyria, was founded one day in March, 1895. On the same day the people of Elyria recognized its fitness to live and prosper, so that it was a success from the start. Everything that is best and newest in men's apparel comes over its counters. The store, which is located in the center of the Commercial Block, is roomy, light, and well equipped. The proprietors, Mr. Ross Fauver and Mr. Edd Robson, are young, energetic business men and the substantial growth of their business is the natural outcome of their united efforts.





E. G. JOHNSON

E. G. & HALE C. JOHNSON  
ATTORNEYS AT LAW



HALE C. JOHNSON





**THE SAVINGS DEPOSIT BANK & TRUST CO. CASH CAPITAL AND SURPLUS, \$275,000.00**

Pays 4 per cent interest, compounded semi-annually on savings accounts. Acts as Executor, Administrator, Trustee of Estates, Guardian, Receiver or Assignee. Rents Safe Deposit Boxes, \$3.00 per annum.



ELYRIA CITY POLICE FORCE



LORAIN COUNTY JAIL



C. F. SILSBURY  
SHERIFF OF LORAIN COUNTY

Elected to office in 1902. Previous to his election to this office Mr. Silsbury served eight years as Deputy.



**OFFICE AND MAIN FACTORY BUILDING**

\*This factory is not only of value to the city as a place of employment of labor, but it serves to help keep the city in touch with the surrounding territory by providing a market for the produce of the truck gardens and fruit orchards of all kinds. The development of this industry has been due to the untiring energy of Charles C. McDonald, an Elyria man. When he met with the loss of his factory in Elyria in 1901, he immediately set to work to continue the industry and secured the plant formerly occupied by the Klauss shear works and since that time the business has shown a fine growth. Among the canned products of the factory are peaches, pure maple syrup, rhubarb, asparagus tips, strawberries, gooseberries, raspberries, blackberries, pitted red cherries, all the leading brands of beans and peas, pork and beans in tomato sauce, tomatoes, apples, pears, etc.



**ENGINE ROOM AND SHIPPING DEPARTMENT**



**THE SWEET CONCERT AND SPECIALTY CO.**

An Elyria musical organization engaged in furnishing high class entertainments on lecture courses and for lodges, churches, etc.



**RESIDENCE OF LEONARD J. SWEET**



**LEONARD J. SWEET**

Eleven years instructor in Elyria Public Schools. Student in Oberlin Conservatory of Music. Director of Sweet's Orchestra for five years. Manager of the Sweet Concert and Specialty Co.



**L. BERTINI SWEET**

Instructor in LaGrange Public Schools. Student of music in Oberlin Conservatory of Music and under specialists. Instructor in music, Elyria and LaGrange.



**INTERIOR VIEW OF LEONARD J. SWEET'S PIANO PARLORS**



HON. GEO. H. CHAMBERLAIN  
PRES. OF ELYRIA COUNCIL, NO. 6

# The BANKERS FRATERNAL UNION

The Bankers Fraternal Union is a Fraternal Insurance Order organized under the laws of Ohio. Supreme office at Cleveland. The membership of Elyria Council No. 6 has nearly reached the 200 mark and is steadily growing.



*Austin Chapman*

ATTORNEY AT LAW





**THE ELYRIA STONE CO. CHAS. T. ELY, PRES  
ELYRIA, O.**

Sampson Stone, Flagging, Platform, Sawed, Step and Building Stone.



**ELYRIA WATER WORKS**

PASTORS OF THE VARIOUS CHURCHES OF ELYRIA



REV. W. C. ENDLY  
METHODIST EPISCOPAL



REV. GEORGE W. JOHNSON  
BAPTIST



REV. JOHN A. SCHMIDT  
ST. JOHN'S LUTHERAN



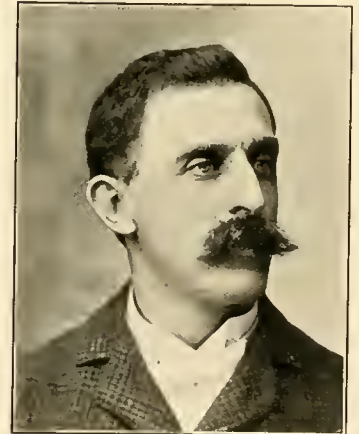
REV. W. E. CADMUS  
FIRST CONGREGATIONAL



REV. N. LEHMAN  
ST. PAUL'S EVANGELICAL



REV. JOHN P. SALA  
CHURCH OF CHRIST



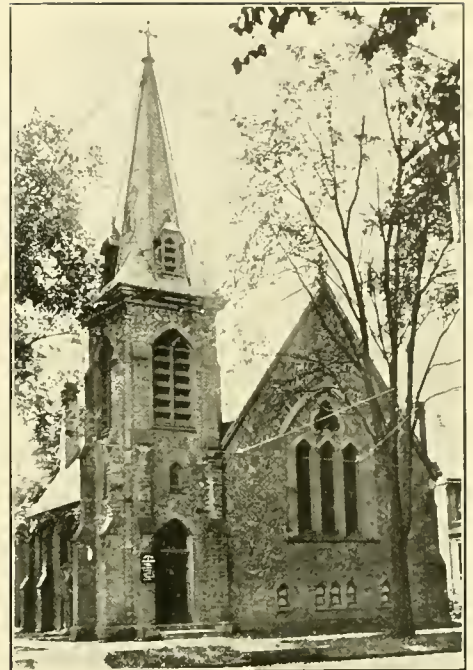
REV. H. S. WANNAMAKER  
SECOND CONGREGATIONAL



REV. J. M. WITHYCOMBE  
EPISCOPAL



FIRST CONGREGATIONAL CHURCH  
CORNER OF COURT AND SECOND STREETS



ST. ANDREW'S EPISCOPAL CHURCH  
CORNER OF MIDDLE AVENUE AND THIRD STREET



CHURCH OF CHRIST  
SECOND STREET



FIRST METHODIST EPISCOPAL CHURCH  
THIRD STREET



BAPTIST CHURCH  
CORNER OF MIDDLE AVENUE AND SECOND STREET



ST. JOHN'S LUTHERAN CHURCH  
CORNER OF WEST AVENUE AND BROAD STREET



SECOND CONGREGATIONAL CHURCH  
CORNER OF LODI STREET AND LAKE AVENUE



ST. PAUL'S EVANGELICAL CHURCH



CASCADE PARK  
A PORTION OF PICNIC GROUNDS SHOWING TABLE ROCK AND CLIFF  
OVERHANGING INDIAN CAMPING GROUNDS



**JOHN MURBACH**

John Murbach is one of the most substantial business men of Elyria. His growth in part among his fellow citizens is due largely to his straight-forward business dealing, his modesty and public spirit. He has been in business in Elyria 25 years and in his store will be found the very latest and best of everything usually found in a first class jewelry store.



**MR. MURBACH'S JEWELRY STORE**



**C. C. SEATON**

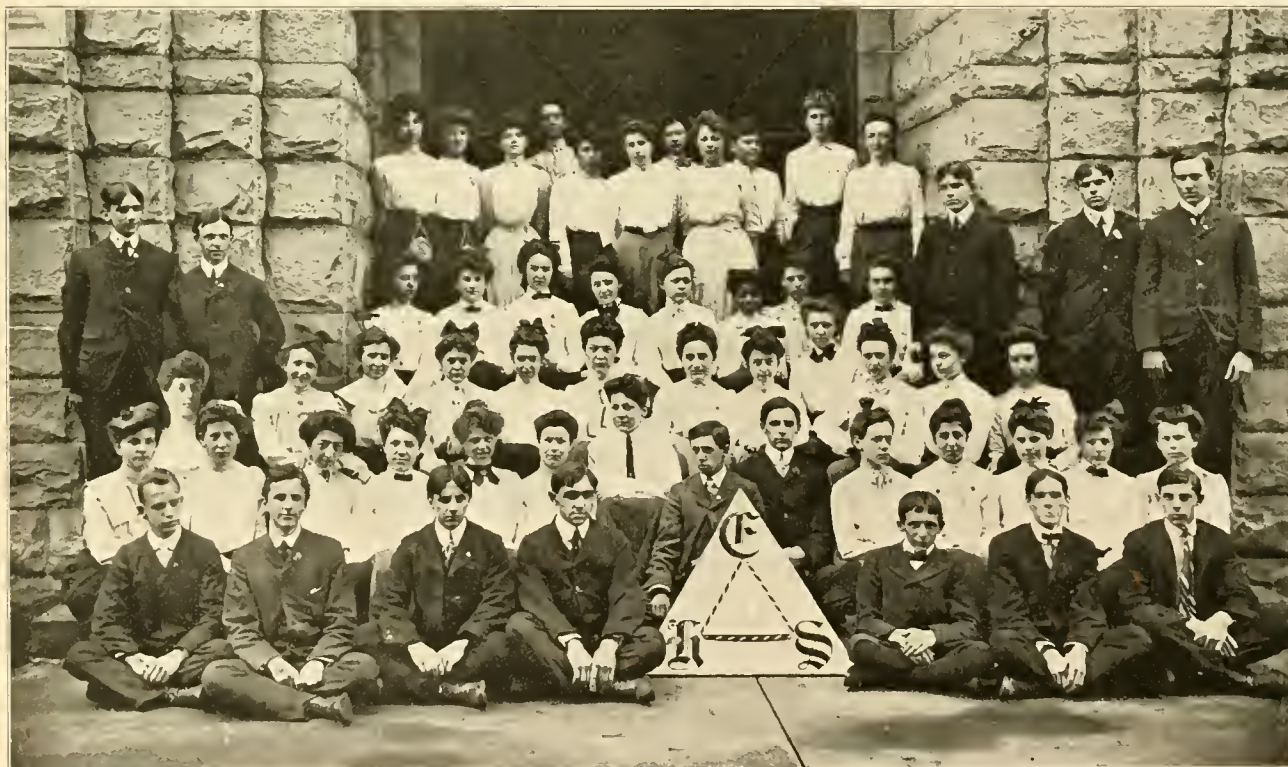
Seaton Bros. are dealers in high grade Bicycles, Sundries and Repair Work.

## ELYRIA'S PUBLIC SCHOOLS

It is something more than fifty years since a meeting called by the public spirited citizens of Elyria resulted in the organization of our schools under the union school system. It was an unselfish movement, and their management for half a century has been in the hands of our best citizens, selected for their good business judgment and their interest in the growth and prosperity of the city's most valuable asset. In this management there has always been concert of action. Political antagonisms have not been allowed to creep in. A long line of our leading citizens—as members of the various school boards have faithfully done their duty to the rising generation. Superintendents and teachers have grown gray in the honorable service of moulding character and preparing young men and young women for life's battle. Results are in evidence; our schools are among the best in the state. They are supported both financially and otherwise, by a loyalty and generosity which accounts largely for their success and makes them the pride of our city. Now with \$150,000 invested in school buildings and equipments, with forty-five well trained teachers and 1500 pupils (350 pupils in the High School, the largest percentage of any High School in Ohio and with bench work being taught in the Grammar grades) the days of our growth, prosperity and usefulness seem to have but just begun.



ELYRIA HIGH SCHOOL.



HIGH SCHOOL GRADUATES OF 1903



MIDDLE BUILDING  
ON EAST SIXTH STREET



WEST AVENUE BUILDING



JEFFERSON AND THIRTEENTH STREET BUILDINGS  
BUILT FROM SAME PLANS



SCHOOL STREET BUILDING  
CORNER OF SCHOOL STREET AND LAKE AVENUE



RIDGE STREET BUILDING



**JOHN LERSCH & CO.**

"Without doubt the handsomest and largest dry goods store in Lorain county is that of John Lersch & Co. It is no disparagement to others to say that Mr. Lersch's career has been a splendid success and this magnificent store is a monument to his integrity as well as to his ability as a business man. The firm now occupies six large floors—a total area many times larger than any store in Lorain county. Mr. Lersch's genial personality is an element to his success yet the cold business proposition of underselling competition assures him of the major share of the trade of this and surrounding towns. Mr. Lersch has now associated with him his two capable sons, Carl T. and Robert B. Lersch, the latter of whom is not less well known through his creditable connection with public affairs in this municipality. It has been truly said that the name Lersch is synonymous with the dry goods business of this county. With equal truth it might be said that the name is synonymous with enterprise, fair dealing and absolute reliability."—Selected from *Elyria Republican and Lorain Times-Herald*.







LACE CURTAIN DEPT.



RIBBON AND NOTION DEPT.



LADIES WAITING ROOM.



CORSET AND HANDKERCHIEF DEPT.

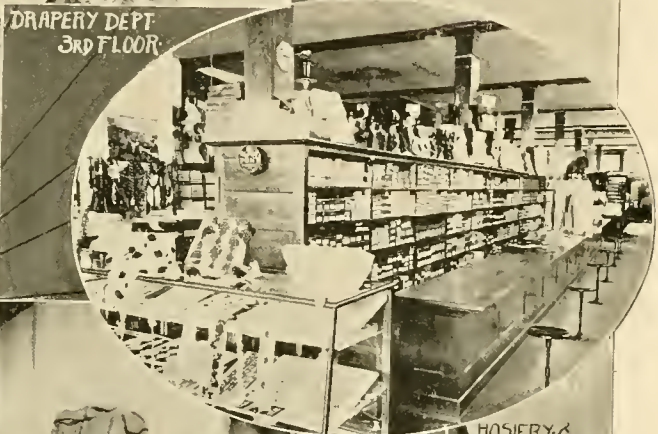


COAT AND SUIT DEPT.

INTERIOR VIEWS OF JOHN LERSCH & CO.'S STORE



WASH GOODS DEPT.



DRAPERY DEPT  
3RD FLOOR



COLORED DRESS GOODS & LININGS



HOSIERY &  
NECKWEAR  
DEPT.



BLACK DRESS GOODS & SILK DEPT.



CARPET DEPT. 3RD FLOOR

INTERIOR VIEWS OF JOHN LERSCH & CO.'S STORE



CHAS. T. ELY

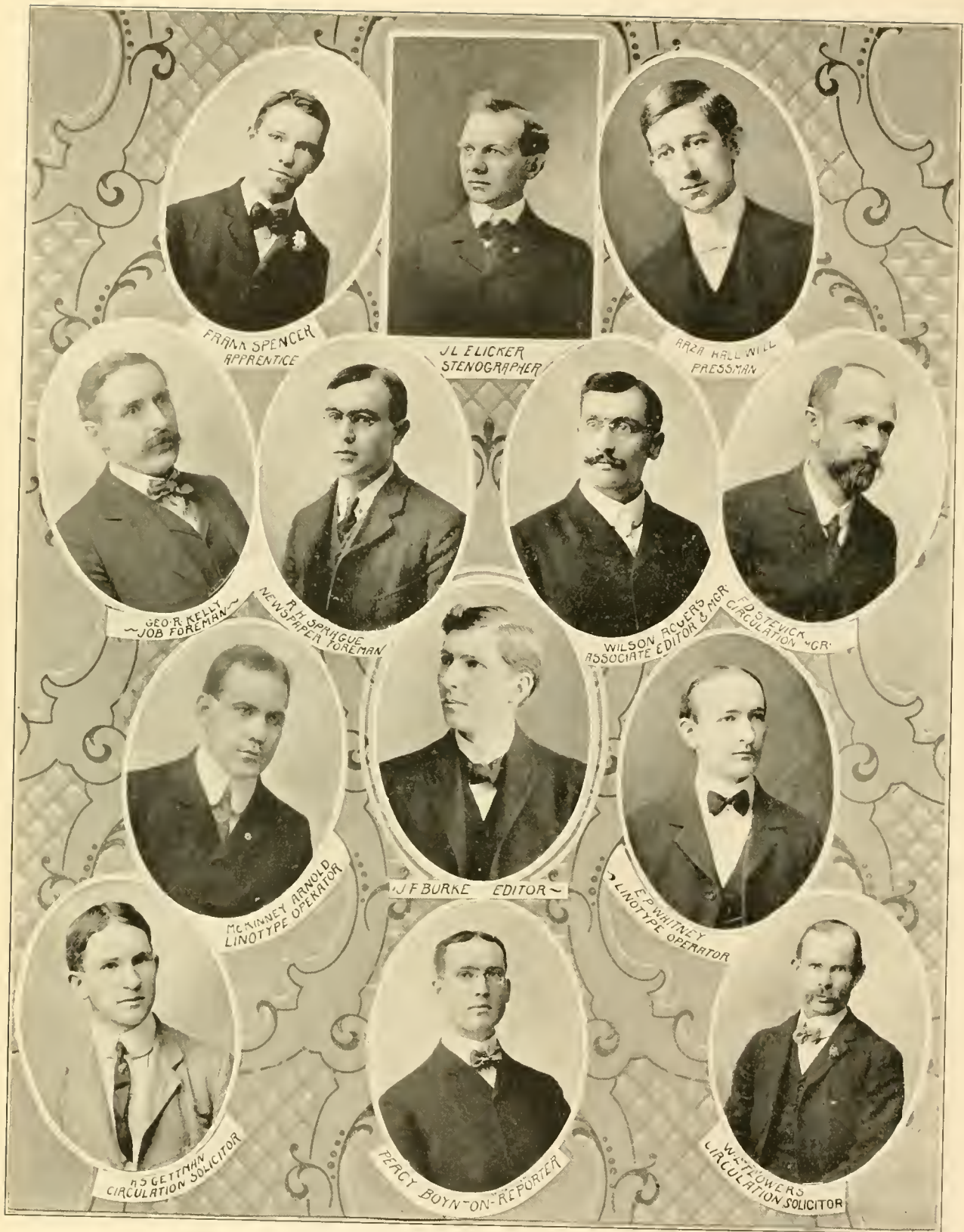


RESIDENCE OF CHAS. T. ELY  
OLDEST HOUSE IN ELYRIA

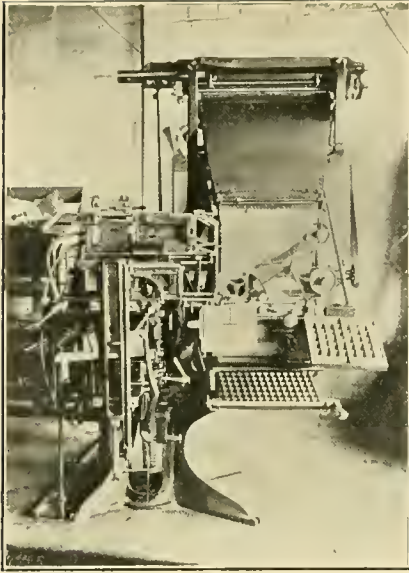
This beautiful house was built in 1818 by Heman Ely, founder of the city of Elyria. It was afterwards occupied by his son, Heman Ely, and later by the latter's son, Charles T. Ely, who still occupies the house. The house is about ninety feet square, built in the substantial manner of the early days, all timbers being hewn and sawed by hand. The peculiar feature of the building is that the clapboards were all sawed from one immense white wood tree cut from the lot where the house stands.



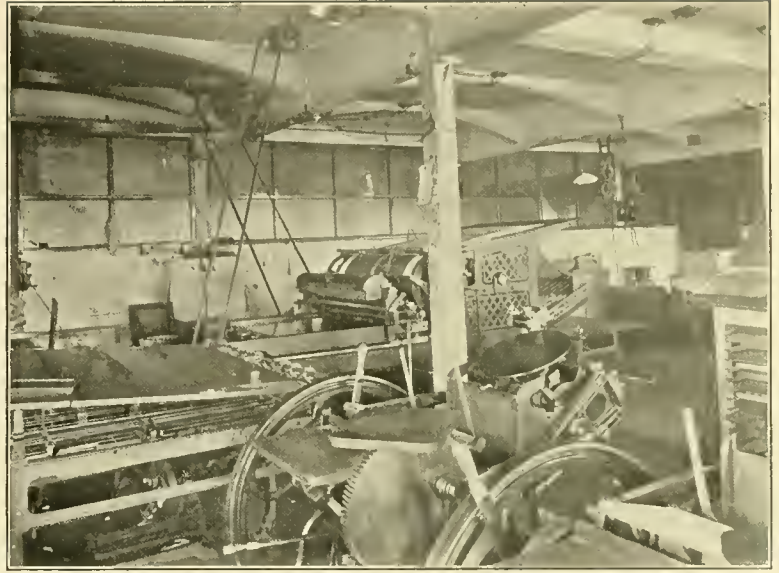
RESIDENCE OF W. G. SHARP, ON WASHINGTON AVENUE



CHRONICLE STAFF AND FORCE



MERGANTHALER LINOTYPE MACHINE



PRESS ROOM OF THE ELYRIA CHRONICLE

#### THE ELYRIA DAILY AND WEEKLY CHRONICLE

This paper has been established in Elyria two years, publishing its first issue July 6, 1901. Its publication has been characterized by progressive business methods, aggressive editorials upholding the public interests, and policies always consistent with those interests. It has had a growth far in excess of the fondest expectations of its promoters and has the most thoroughly equipped newspaper office in the county. Elyria is admirably situated for distribution of papers on account of its electric lines and rural routes, so that the Daily Chronicle is rapidly covering the rural districts of the county as well as the cities and villages.



GROUP OF CHRONICLE NEWS BOYS



**CHAS. C. LORD**  
JUSTICE OF THE PEACE  
FIRE INSURANCE

ESTABLISHED 1857

ELYRIA PHONE 161



**C. F. NICHOLS**

Dealer in cigars, tobacco, candies and ice cream. Both wholesale and retail business. 567 Lodi street, corner of West avenue. Phone R West 81.



**P. H. BOYNTON**

P. H. Boynton was born in Lorain County, August 10, 1848, and has lived practically all of his life in Elyria. He entered the practice of law in 1869 after preparation at Michigan University. Mr. Boynton was mayor of the town from 1888 to 1895. The insurance business, founded half a century ago by the late J. H. Boynton, is handled in his office, 206 Ely Block.



**THE ELYRIA MILLING COMPANY**

DEALERS IN  
**FLOUR, FEED, BALED HAY AND STRAW**

This company owns two flour mills and a saw mill. The old historic "White Mill," rebuilt in 1887, and the new mill at the East Falls, where 150 barrels of their celebrated "Morning Glory" flour is made per day. The officers are: G. H. Arnold, president; John Murbach, vice president; J. E. Murbach, secretary, treasurer and manager. The rapid growth of this business amply illustrates effective and capable management, and the production of meritorious goods.



**WEST FALLS AND LODI STREET BRIDGE**



**THE PARSCH LUMBER CO.**

DEALERS IN LUMBER, DOORS, SASH, COAL, ETC.

This business was originally established by Christian Parsch in 1873, and by industry, economy, fair dealing, helpful and friendly consideration for his employes, produced a union of effort resulting in deserved prosperity and an honorable place among the substantial firms of Elyria.

On February 1, 1901, Mr. Parsch entered into partnership with his three sons, W. T., A. P. and J. C. Parsch, under the above name, and officered as follows: Christian Parsch, President; A. P. Parsch, Vice President; W. T. Parsch, Treasurer and Manager; J. C. Parsch, Secretary.







F. M. WHITEMAN



A. W. CINNIGER  
ATTORNEY-AT-LAW

"THOU SHALT LOVE THY NEIGHBOR AS THYSELF"



FRATERNAL AND BENEFICIAL

OFFICERS

A. W. Cinniger, Venerable Counsel.  
 Frank Crowell, Worthy Advisor.  
 W. B. Johnston, Clerk.  
 H. A. Pounds, Banker.  
 Tobias Connors, Chief Forester.  
 Leonard Tafford, Priest.  
 Edward Terrell, Watchman.  
 G. H. Boynton, Sentry.

MANAGERS

Dr. R. G. Anderson, Dr. A. G. Ward, Frederick Ward.



**THE ELYRIA LUMBER AND COAL CO.**

Dealers in lumber, lath, shingles, doors, windows and hard and soft coal. Located on Chestnut street.



**L. D. HAMLIN**  
MEMBER OF STATE BOARD OF PUBLIC WORKS



RESIDENCE OF J. A. DAVIS ON EAST AVENUE



QUINCY A. GILMORE  
ATTORNEY-AT-LAW



E. L. DISBRO  
EDITOR



PRIVATE OFFICE



BUSINESS OFFICE

The Elyria Reporter was established as a weekly newspaper in 1892 and now ranks among the leading country newspapers in the state. The Daily Reporter is now in its sixth year. It was Elyria's first daily newspaper and from the start has enjoyed a liberal patronage and the confidence of the public. It has always been conservative in all its policies, but fearless to express its opinions upon all questions. The Reporter is staunchly Republican in politics.

H. K. Clock was The Reporter's first editor, retiring in 1894. He was succeeded by Hon. E. G. Johnson, who edited the paper until 1898, when his interests were purchased by L. B. Fauver. In 1891 E. L. Disbro assumed control of the paper and is its present editor and manager.



MARIA LOWMNDER ALLEN

The subject of this sketch was born in Pompton, New Jersey, October 20, 1801. She was married to Thomas J. Allen, October 13, 1823, and nine years later the family moved to Ohio. She is the mother of seven children—five sons and two daughters—all of whom reached maturity. The older daughter married Mr. Ed. Butterfield, and the younger was the wife of Mr. J. E. Boynton, with whom Mrs. Allen has for many years resided. The five sons all went to sea but eventually Mr. William Allen served in the Mexican war of 1847, and later in the Civil war. Captain Richard Allen was fatally wounded in the battle of Fredericksburg, December 13, 1863. Mr. James Allen was Lieutenant of Co. H, 103 O. V. I. Mrs. Allen was an earnest worker during the war and always ready with lint and bandages and jellies and wines for the boys who stood by the stars and stripes. She is a charter member of the W. R. C. and the oldest member of that organization in the United States. Barring the infirmities of old age she is in good health and has survived all her children except the elder daughter. She attributes her long life to the fact that she has always worked moderately hard and lived on plain diet.



*"An honest man is the noblest work of God."*

Joshua E. Boynton, oldest son of Joshua Boynton, was born in Athens-Somerset county, Maine, in 1832. With his father's family he moved to Elyria in 1837, since which time he has resided in this city. Mr. Boynton is not only well-known to the people of Elyria but to Lorain and adjoining counties. Integrity of the sterling sort, or a word as good as his bond, is a distinction that he has always enjoyed. He was a member of our city council for nearly fifteen years, and was known as the Gibraltar which never wavered when the interests of the people were at stake. The municipal world needs more men of Mr. Boynton's courage, of his fearlessness in standing for the right. His tender heart and sympathetic nature, with his loyalty to principles of good government and genuine manhood commend him to a host of friends.



JOSHUA E. BOYNTON



MARTIN MUELLER  
GEORGE E. HILL

H. W. SUMIERS  
ROBERT B. LERSCH

D. W. BAKER  
FRANK A. SMITH

FRED. NORTON SMITH, PRES.  
HOWARD D. COOK

**ELYRIA CITY COUNCIL.**



**EAST BROAD STREET**

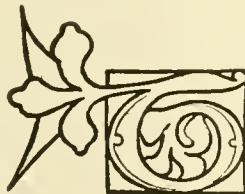


A. L. GARFORD  
C. C. ENSIGN

D. J. NYE

J. H. LEONARD  
C. E. TUCKER

OFFICERS ELYRIA CHAMBER OF COMMERCE



THE Elyria Chamber of Commerce was organized May 1, 1899. Its objects as defined in its constitution "Are to collect, preserve, and circulate valuable and useful information relating to the business of Elyria and especially the facts relating to its manufactures and merchantile interests, to encourage wise and needful legislation and to strive in all honorable and proper ways to advance the merchantile, manufacturing, commercial, industrial, educational and all other interests promotive of the well-being of the city." Since the organization of this association several manufacturers have located in Elyria, among which are The Fox Furnace Company, The Elyria Iron & Steel Company, The Columbia Steel Company, The Worthington Manufacturing Company, The Elyria Engine Company, The Worth Manufacturing Company, and the Duplex Foundry & Machine Company.

The officers of the Chamber of Commerce for the year 1923 are :

- CHARLES C. ENSIGN, President.
- DAVID J. NYE, First Vice President.
- ARTHUR L. GARFORD, Second Vice President.
- JAMES H. LEONARD, Treasurer.
- CHARLES E. TUCKER, Secretary.

Regular meetings are held the first Friday evening of each month.



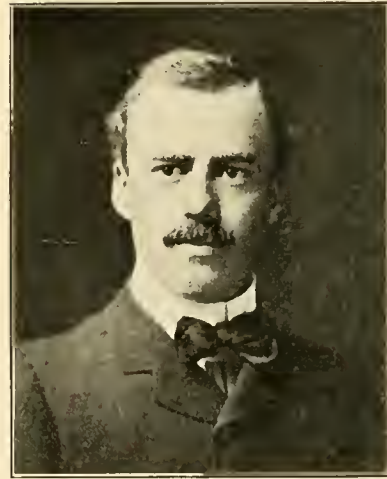
**THE WORTHINGTON MANUFACTURING COMPANY**

Is located on corner of Center and Pine streets. They manufacture a complete line of golf goods, children's and cripples' bicycle, invalid chairs and juvenile bicycles.

George E. Worthington is president; S. B. Leonard, vice president and manager; S. S. Richwood, secretary and treasurer.



**L. A. FAUVER**



**G. A. LAGRON**

**THE OHIO ENGINEERING COMPANY**  
CIVIL AND CONTRACTING ENGINEERS

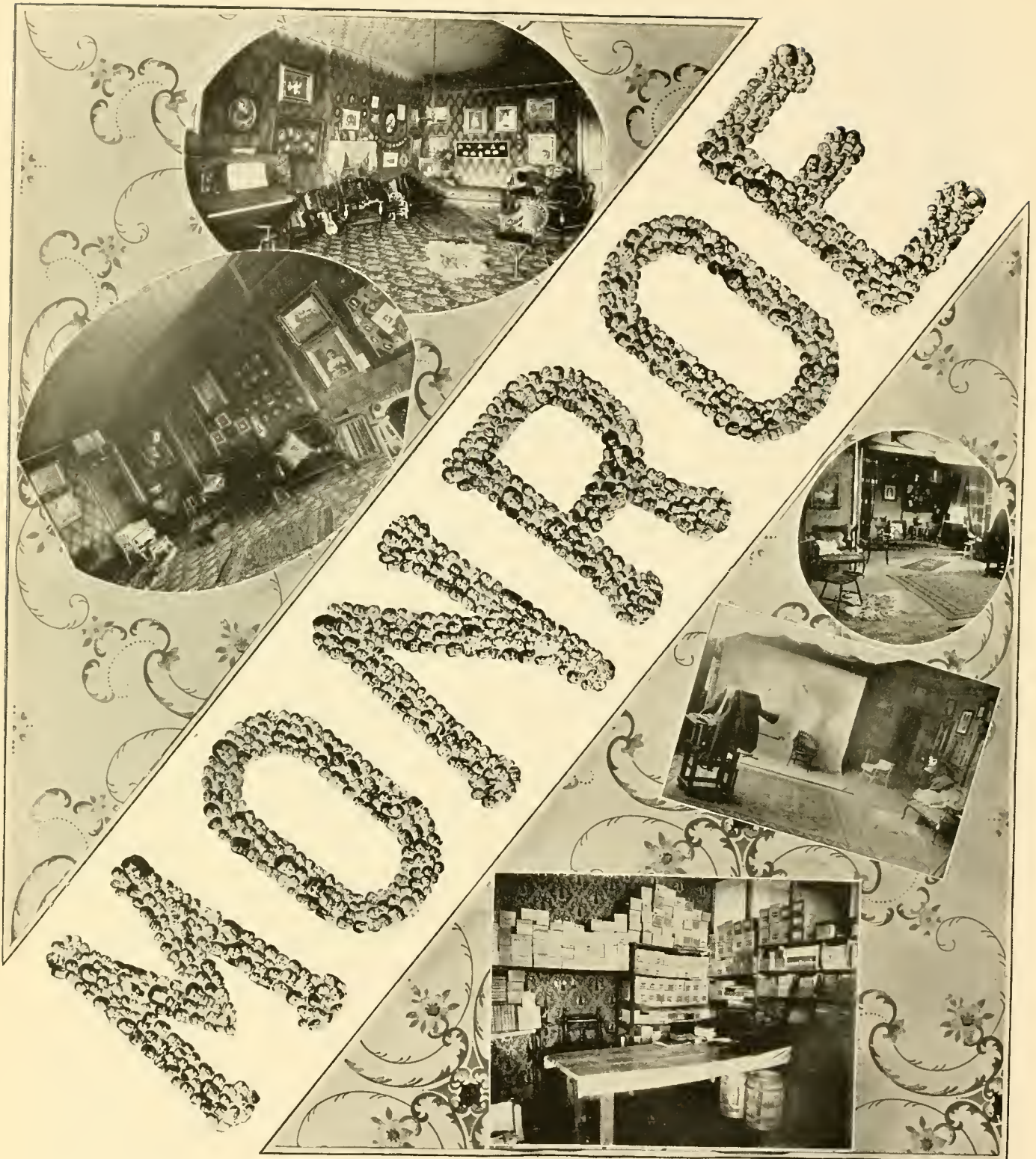
The Ohio Engineering Company was incorporated in Elyria, May 21, 1903, to engage in general engineering and contracting. Since its organization the business of the company has increased until they now have a corps of twelve engineers and assistants.

The company makes a specialty of engineering and contracting for paving, sewerage, water works, steam and electric railways, also land surveying and platting, the surveying, platting, grading and improvement of new-allotments and subdivisions. L. A. Fauver, county surveyor, is president, and G. A. Lagron, city engineer of Elyria, is secretary and treasurer.





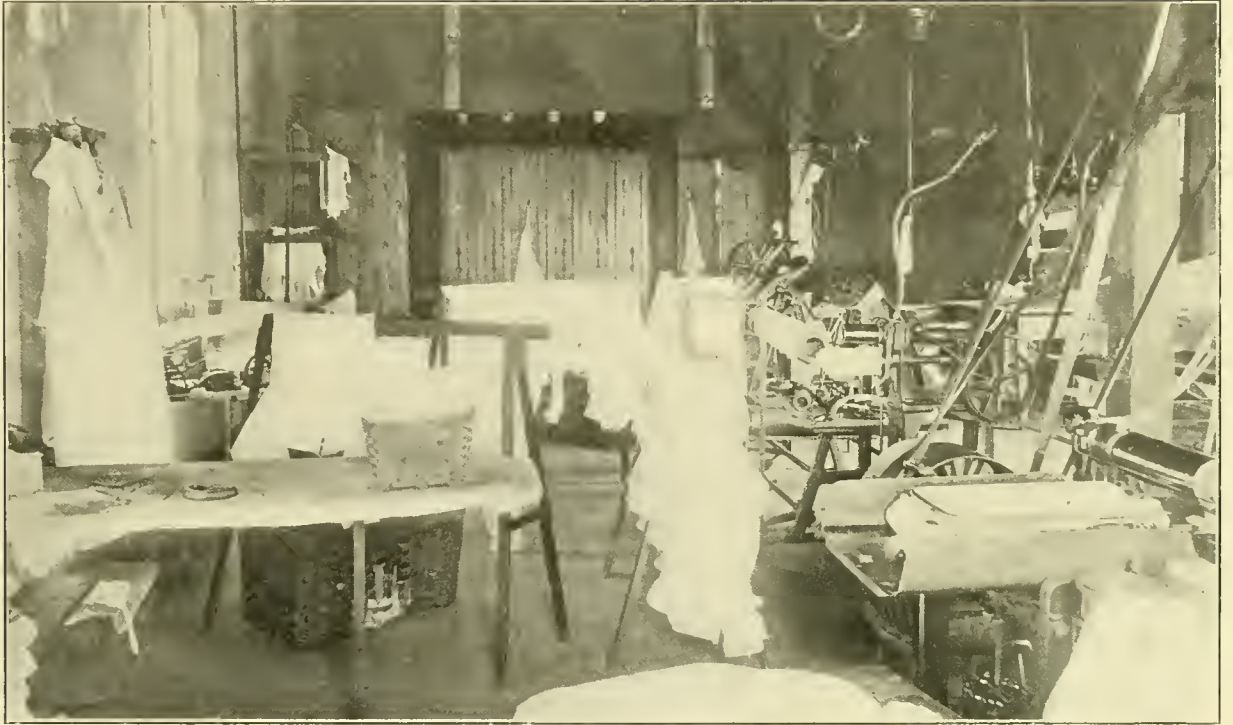
One of the largest and most influential lodges in the city with the finest lodge rooms in Northern Ohio.



TWO VIEWS OF RECEPTION ROOM

VIEWS OF OPERATING ROOM AND STOCK ROOM

**STUDIO OF MRS. O. H. MONROE**  
ELY BLOCK, ELYRIA, OHIO



PHONE W 12

**THE BUCKEYE STEAM LAUNDRY.**

J. M. BRONKAR, PROP.

Mr. Bronkar has been in this business for about eight years, and deserves the reputation he has gained by his earnest endeavors to please the public. His establishment is well equipped with the latest machinery, which enables him to do first class work at fair prices.



**A GROUP OF MERRY MAKERS AT STONE STEPS TO HARMONY HILL**



**ELYRIA COAL AND SEWER PIPE CO.**

F. F. SANFORD, PROPRIETOR  
OFFICE, 524 WEST BROAD STREET

**PHONES**

ELYRIA, BROAD STREET OFFICE, 255  
YARD, 542  
RESIDENCE, 174  
WEST SIDE OFFICE, W 40

**YARDS**

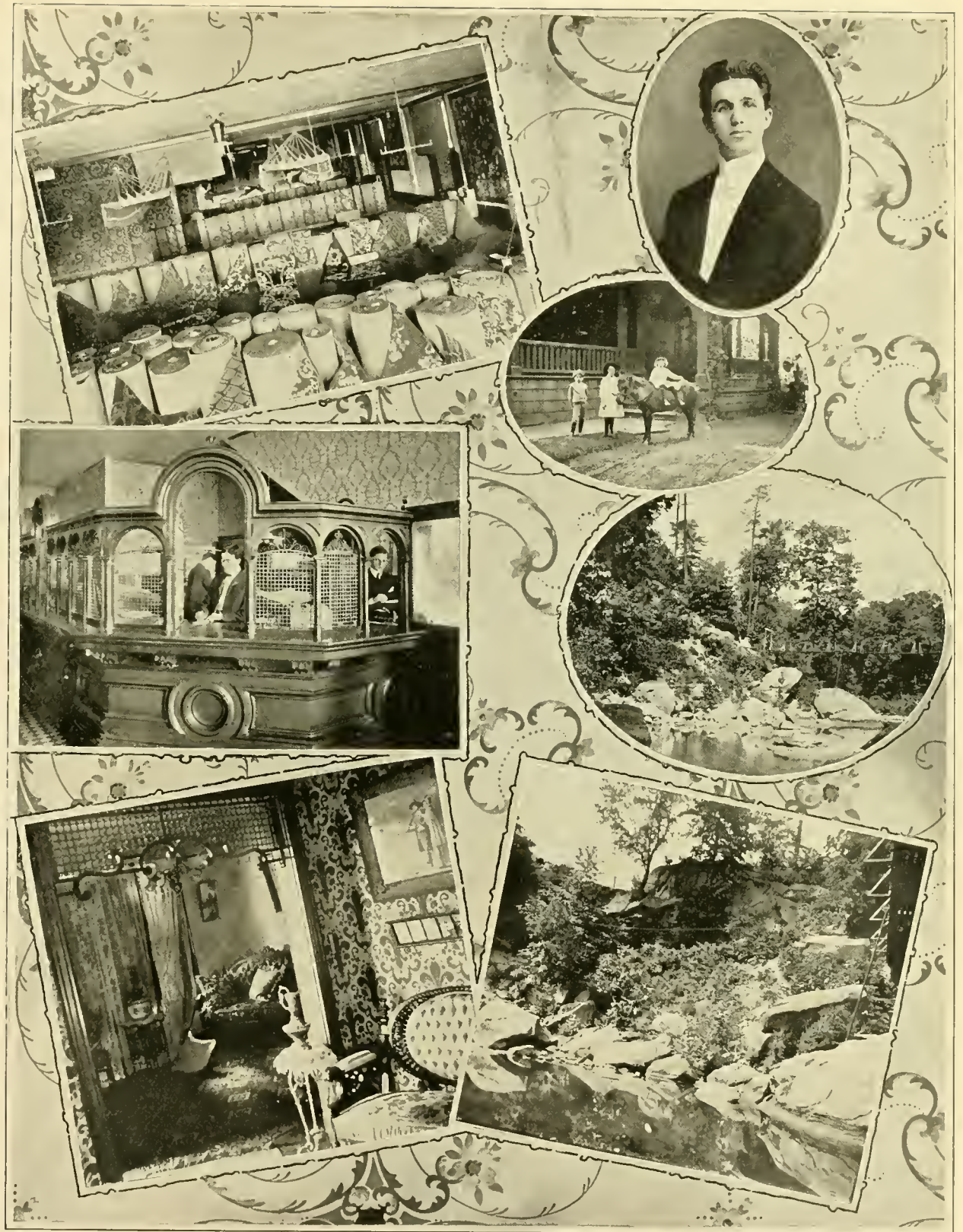
WEST NORTH STREET,  
SOUTH OF U. S. & N. W. TRACKS,  
WEST SIDE OFFICE AND YARDS,  
CORNER WEST STREET  
AND U. S. & W. TRACKS



**SANFORD HOMESTEAD**



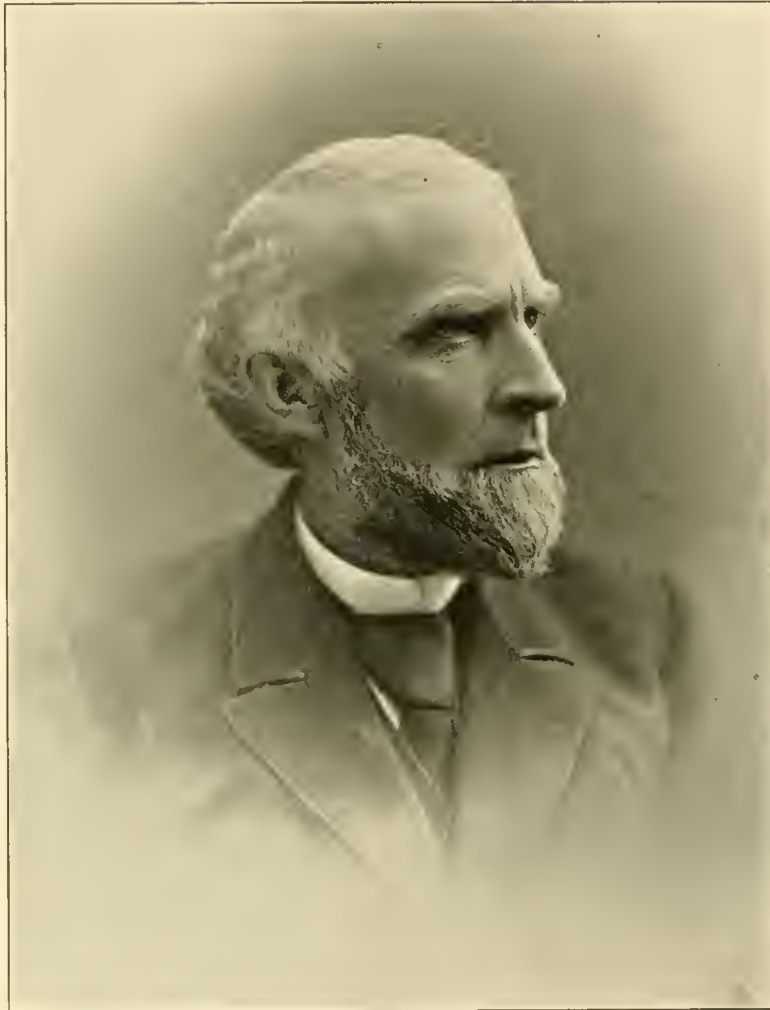
**JOSH BOYNTON STANDEN**  
BORN IN DOVER, APRIL 13, 1896



Negatives made on Seeds' Dry Plates

C. M. GROTY, PHOTOGRAPHER  
 Special Attention given to Views and all Exterior Work

Prints made on American Aristotype Paper



HON. WILLIAM A. BRAMAN

Conspicuous among the able men of Lorain County for forty years has been the Honorable Wm. A. Braman, whose striking figure and strong personality are indelibly impressed upon our people. He was born October 4, 1836, on a Carlisle farm, and removed to Elyria in 1855.

The confidence reposed not only in his integrity, but as well in his abilities, has been strikingly exemplified by the many positions of trust and confidence to which he has been called. At one time he was Commissioner of this county; for 19 years member of Elyria School Board; from 1877 to 1881 County Treasurer; from 1887 to 1891 its Representative in the General Assembly, where, by his industry and abilities, he took front rank and became known throughout the State. He was one of the organizers of the Savings Deposit Bank, and either its vice president or director for thirty years. For seven years he ably edited the Elyria Republican; for six years he was president of the Lorain County Agricultural Society; he was one of the organizers and is now the president of The Elyria Savings and Banking Co.; was also one of the promoters and is now an officer of the Penfield Avenue Bank of Lorain. In 1900 he toured Europe, and on his return published an account of his travels in book form, entitled "Glimpses of Europe," which has been read with great interest.

He is an entertaining and versatile writer. His letters of his trips through the west and California, published in the press, have given the public a clear and intelligent idea of our western empire.

In all questions affecting the morals of the community or its improvement he has been one of the foremost. As an all around man of affairs possessed of a broad sweep of things in general, effecting the community, he has been without a superior in this county. A man of clean character, correct habits and unchallenged integrity, it is a life worthy of emulation by any young man who desires to serve well his day and generation.



### BUSINESS WOMEN

While Elyria stands in the front rank with respect to the character and ability of its business men, it must not be understood that we lack for business women who show equal adaptitude. Among those deserving special mention are:—

Mrs. Erie D. Chapman, organizer and director of a prominent Elyria orchestra. She takes an active interest in the musical life of our city, having been identified with two of our churches as organist. Her ability as an accompanist is recognized by all.

Mrs. J. C. Bins is actively identified with her husband in the management of Bins' bookstore in all its diversified interests.

Mrs. J. C. Letson is cashier for the United States Express Co. and courteous assistant to her husband in the management of that important business.

Mrs. L. J. Sweet, a successful teacher of music and associate director of Sweet's orchestra.

Mrs. Wilson Rogers, pianist at the music store of R. M. Summers & Son. Formerly deputy in postoffice at Lodi and a successful music teacher.

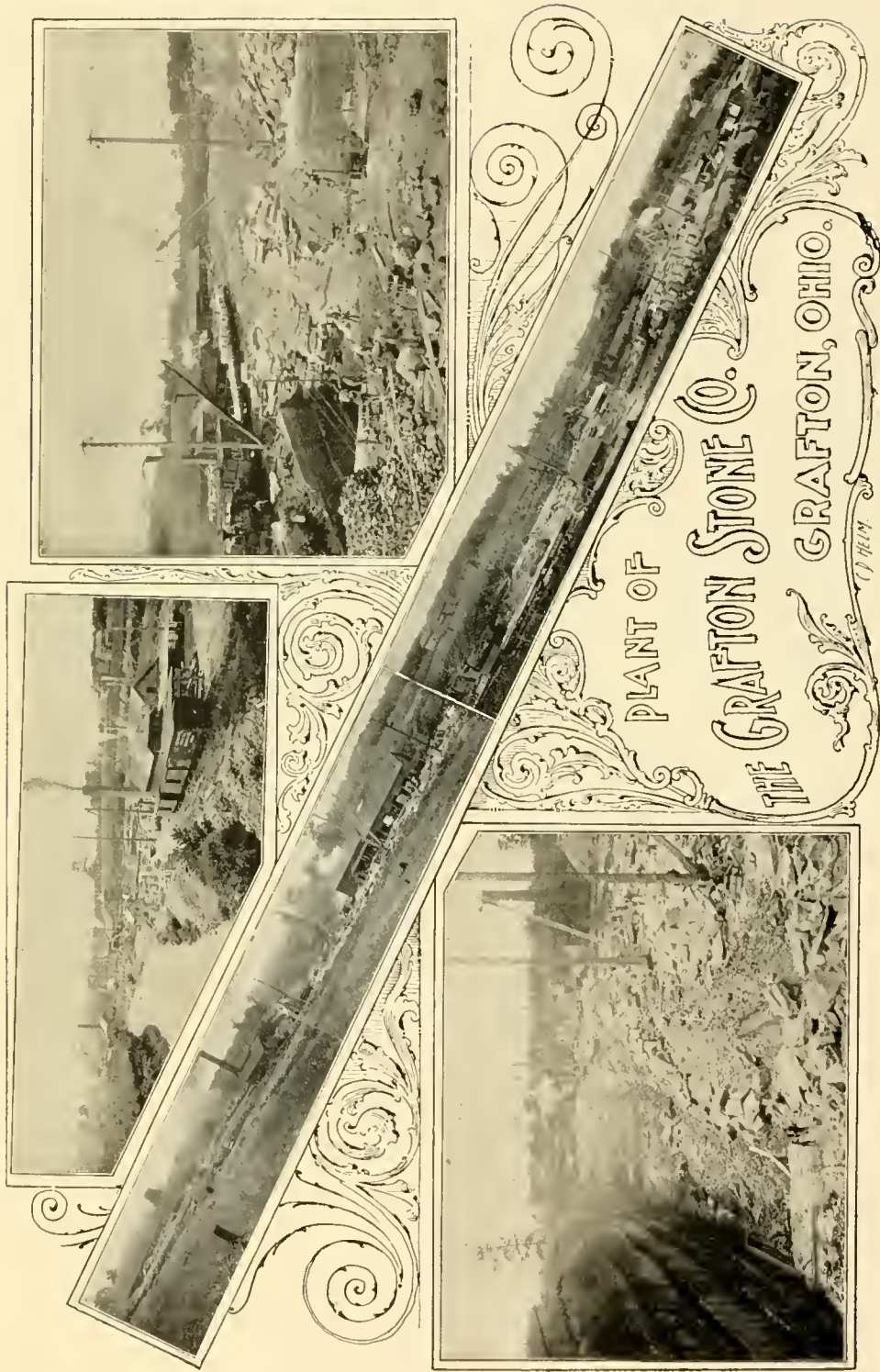
Miss Elcie M. Johnston is the successful president of the Elyria Business College. Miss Johnston and her students are to be congratulated on the success attained in this institution.

Mrs. W. J. Hilliar is the gracious landlady and active participant in the successful management of the Hotel Andwur.

Mrs. O. H. Monroe, photographer, came to Elyria seven years ago, and with strict attention to business has built up a large and lucrative trade.

These, and many other business women of Elyria, bear their full share in swelling the grand total of business energies exerted to carry on successfully our varied commercial pursuits.

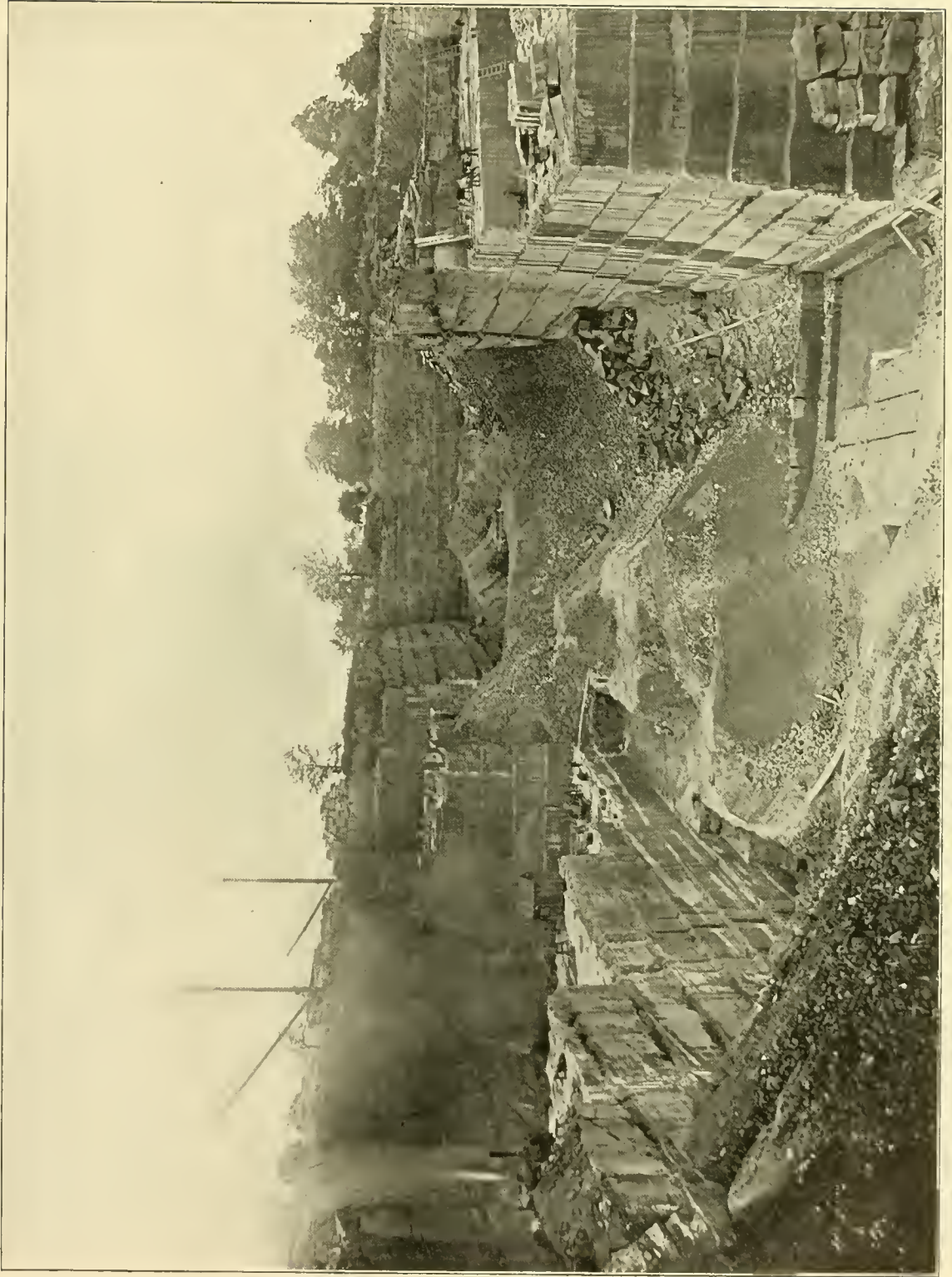




**THE GRAFTON STONE COMPANY**  
 F. S. MILLER, RESIDENT MANAGER

Manufacture grindstones, scythe stones, buff and blue building, and sawed stones.





MUSSEY QUARRY OF THE GRAFTON STONE COMPANY

## THE CLEVELAND & SOUTHWESTERN TRACTION COMPANY



POWER HOUSE, ELYRIA, O.

The Cleveland & Southwestern Traction Company radiates with their tracks in every direction, with Elyria, as the center, one branch going to North Amherst and Lorain; one to Oberlin, and from thence branching again, one branch going to Wellington and another to Norwalk; one branch connecting Grafton with Elyria, and one branch connecting with Cleveland, branching off to Berea and Wooster, makes, under one company, one of the most complete and beneficial electric systems of which any small city can boast.

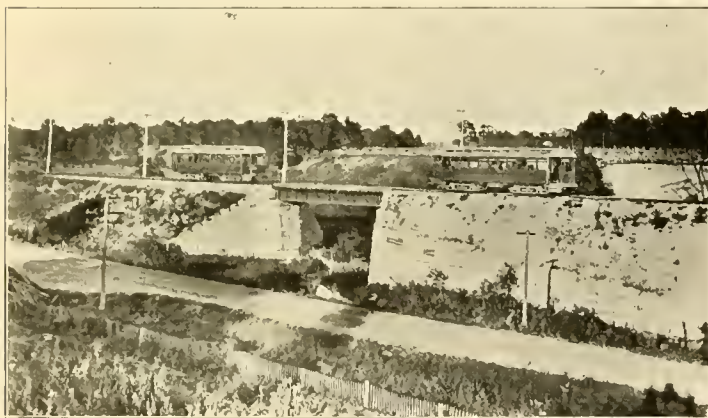
After going through the stage of having one or

two small power houses, this company determined to abandon that idea, and to concentrate all machinery for this great system at one main power house, which would be located approximately at the load center of their system, which, in this case is Elyria. From a power standpoint, the equipment of this road is said to be one of the most modern in the United States, and one of the most extensive in the state of Ohio.

By the system which they have adopted and are carrying out, it is possible to construct and operate lines, which under other conditions would not be



PUBLIC SQUARE, ELYRIA, O.



BRIDGE BETWEEN OBERLIN AND WELLINGTON

paying investments, thus to the people of the smaller town will come the benefit. The main shop and car houses of the line are situated on the banks of Rocky River, four and one-half miles from Cleveland.

The large and beautiful cars constructed by the Kuhlman Company, which are operated over this line, make it a comfort and pleasure for the traveling public. Cars are operated between Elyria and Cleveland, and Elyria and Oberlin every thirty minutes, so that almost the slightest wish in point of time of the traveler is met.



**THE AMERICAN CONSTRUCTION  
AND TRADING CO.**

Is the outgrowth of the enterprise of Elyria business men and was organized in 1901 to take over the construction work of The Rawson Electric Co. Their operations are confined at present to building, equipping and operating telephone properties within New York state, and several New York capitalists are stockholders in the concern, the company controlling many valuable properties. The directors of the company are E. E. Williams, S. B. Rawson, F. H. Sudro, I. H. Griswold, T. M. Brush of Elyria, A. Kuttner of Cleveland, and E. B. Toedt of Albany, N. Y. The officers being S. B. Rawson, president; I. H. Griswold, vice president, and T. M. Brush, secretary and treasurer.



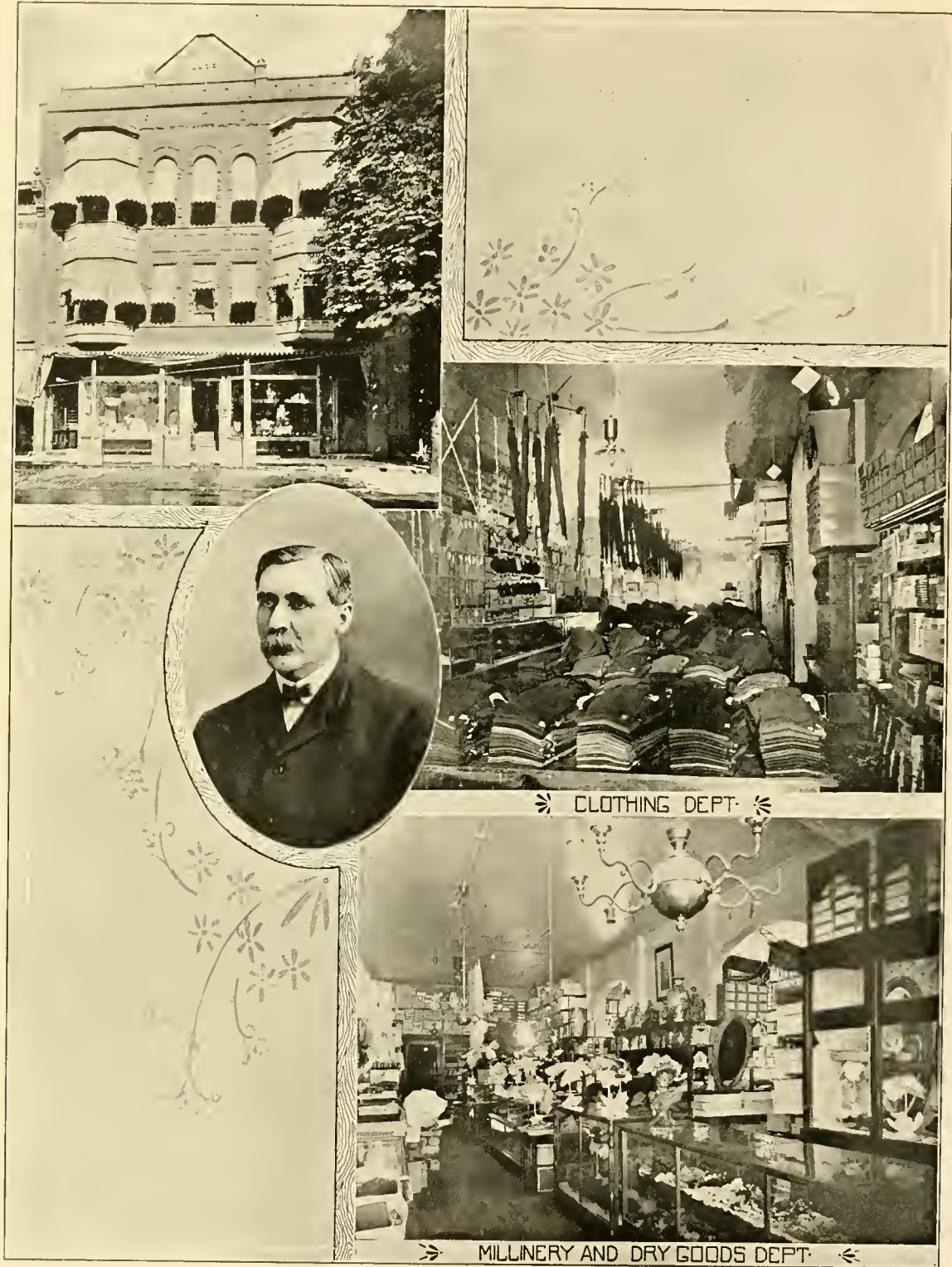
S. B. RAWSON, PRESIDENT



I. H. GRISWOLD, VICE PRESIDENT

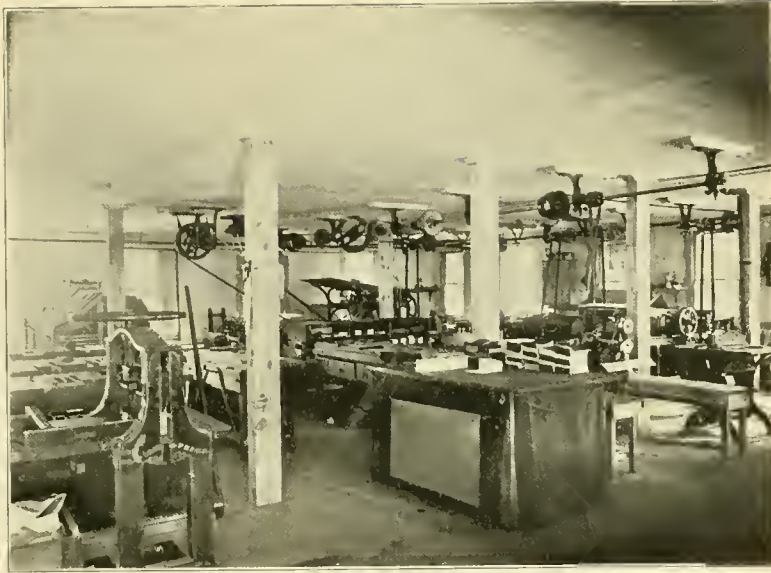


T. M. BRUSH, SECRETARY AND TREASURER



**J. F. COLLINS' RACKET STORE**

One of the most prosperous and unique institutions of our city is the New York Racket Store, Cheapside, the prosperity and progress of which is due to the personality of its proprietor, who by his strict attention to business has made a place for himself among the trusted business men of Elyria.



**PERRY S. WILLIAMS**

GENERAL MANAGER OF THE REPUBLICAN PRINTING  
COMPANY AND TREASURER OF THE CITY

The fine interior view above shows a portion of the workshop of The Republican Printing Company in their new home at 329 Second street. This is the largest local and foreign printing business in Lorain county.

The Elyria Republican, the oldest newspaper in the county, is published by this company. It had its inception in the founding of the Lorain County Gazette in 1829, which dates the beginning of Lorain county journalism.



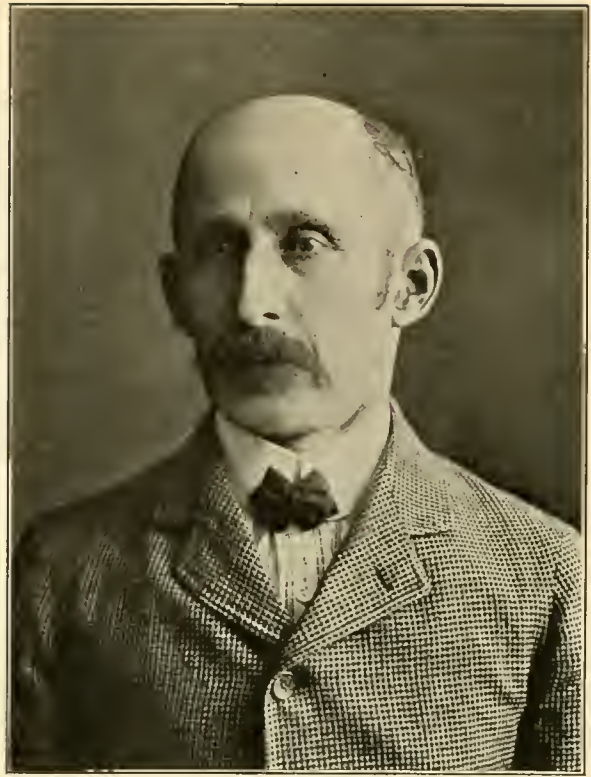
**RESIDENCE OF JOHN LERSCH**



## ELYRIA CANDY COMPANY

Established nearly fifty years ago by Sampsell & Clark. Has enjoyed a large and profitable business from the beginning. Present company organized two years ago on the death of J. A. Jacob, who succeeded Clarke & Co. Mr. J. P. Eidt is its present efficient president and general manager.

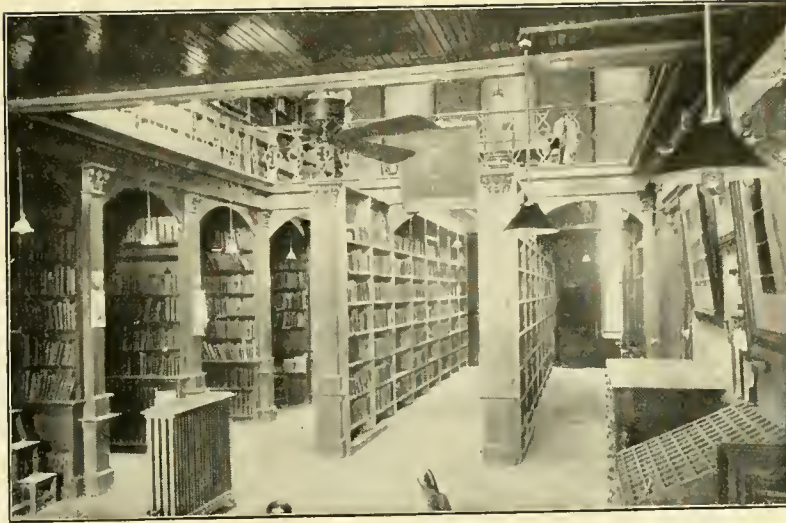
Manufacturers of and dealers in high-grade candies and confectionery, their trade extending into the surrounding country for forty miles.



J. P. EIDT

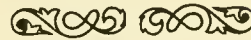


ELYRIA CANDY STORE, CHEAPSIDE



## ELYRIA'S FREE PUBLIC LIBRARY

Saturday, August 1, 1903, the Elyria library has been made free to the public through action by the school board providing a tax levy for library purposes. The library was established in 1867 through the provisions of the will of the late Charles Arthur. There are now over 15,500 volumes, to which additions are constantly being made.



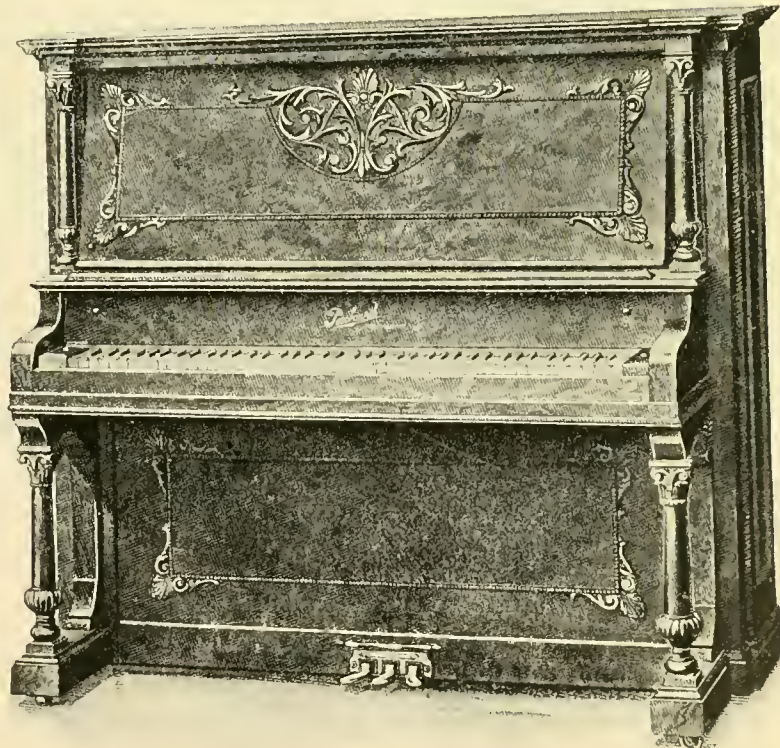
## THE BLAIN BROS. COMPANY 353 BROAD STREET



PERCY L. BLAIN

The only house in Lorain County dealing exclusively in pianos and organs.

This firm does an immense business in northern Ohio and other states.



DAVID H. BLAIN

Business started by Holly & Blain succeeded by Blain & Obitts in 1898.

Present company incorporated in February 1903, with Percy and David H. Blain as the active managers.



*The Lorain Steel Company, Lorain, Ohio, U. S. A.*

**THE UNITED STATES STEEL COMPANY'S  
FACTORIES AT SOUTH LORAIN**

The immense steel mills of the United States Steel Corporation at South Lorain are worthy of notice in this book on account of the great influence that their establishment has had on the growth of the city of Elyria.

The construction of the plant was commenced in 1894 and steel making was started April 1st, 1895, the site having been selected on account of the fine harbor at Lorain, and the greater fact that the keen foresight of A. J. Moxham, saw that this immediate vicinity, with its cheap ore rates from the upper lakes, would eventually prove the most economical location in the world for immense steel industries. The results have already proved that he was correct.

At the time the plant was established, an electric line was built connecting this location with both Elyria and Lorain, the plant being nearly half way from the lake to Elyria. There was immediately a great rush of people to this city, and many hundreds of the officials and employees of the company now have their residence in Elyria. They enjoy all the advantages of Elyria as a residence city and have only fifteen minutes ride to reach their work, the fare being but six cents.

Since the establishment of the plant, its products have consisted mainly of steel rails, blooms and billets, the shipments reaching many hundreds of thousands of tons yearly.

The company receive their ores direct from the upper lakes and manufacture pig iron in two large furnaces, which will be increased by four more in the near future. Pig iron is converted into steel by the Bessemer process in two immense converters, and two bloom mills, two immense rail mills, and the usual number of finishing mills unite in producing the finest steel rails in the world.

There are now under construction in connection with this plant, the new tube mills, which will nearly double the size of the plant, and the plant will soon be employing, in addition to the four thousand men now employed, four or five thousand more, many of whom will make their homes in Elyria.







**THE LODGE ROOM OF THE ELKS IN THE ELYRIA BLOCK**

This is said to be the most finely appointed lodge room in the state. The rooms of this order occupy the entire top floor of the Elyria block and are fitted in the same elaborate manner throughout.



SOME INTERESTING PHOTOGRAPHS FROM THE STUDIO OF MRS. O. H. MONROE



COPYRIGHT, 1903,  
BY ELYRIA SOUVENIR COMPANY

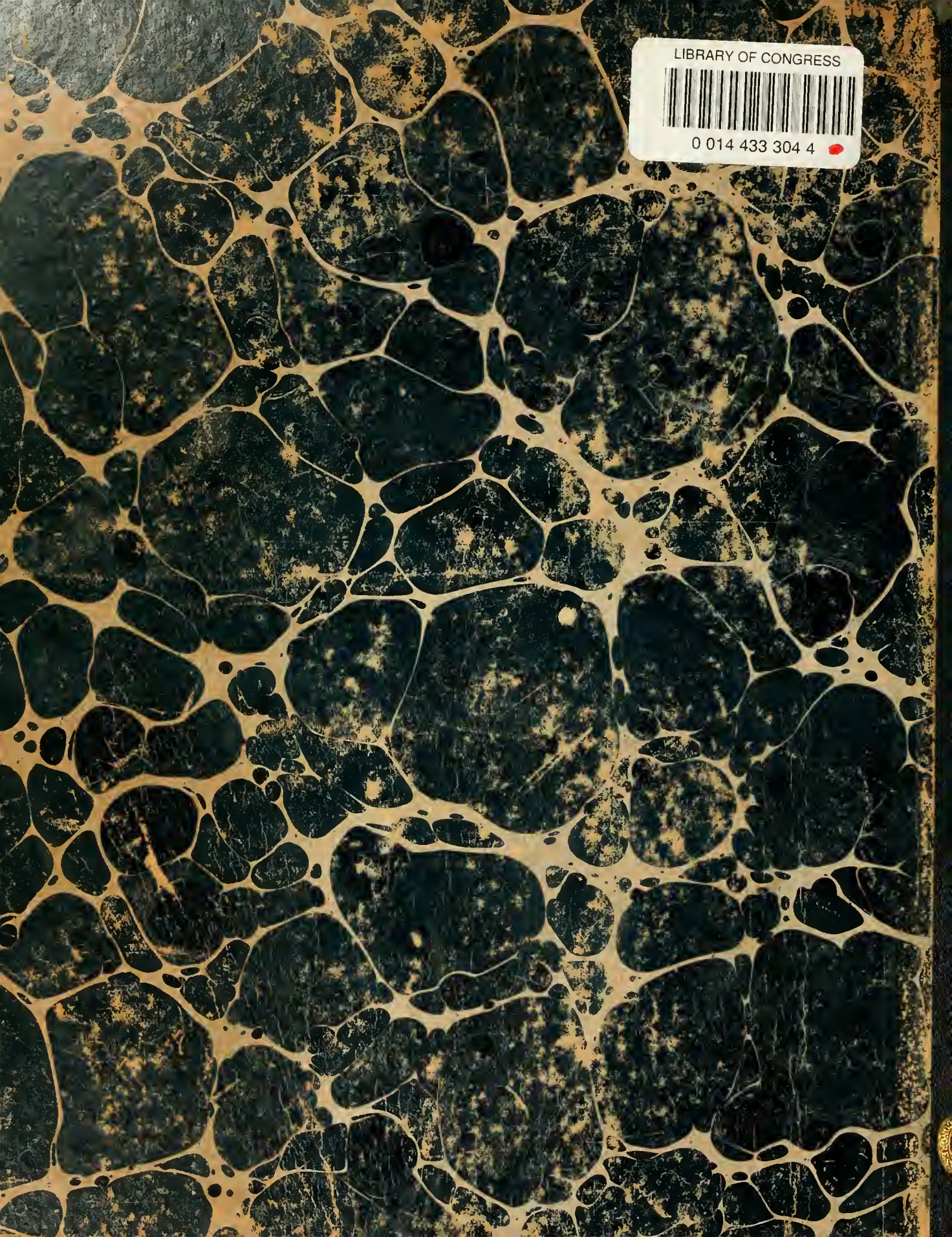
---

PRESS OF THE A. C. ROGERS CO.  
CLEVELAND









LIBRARY OF CONGRESS



0 014 433 304 4

