

Historic, archived document

Do not assume content reflects current scientific knowledge, policies, or practices.

DEPENDABLE

SWEET
SWEET
SWEET

LIBRARY
FEB 24 1938
U. S. Department of Agriculture



1938



THE CHAS. C. HART
SEED CO. — — —

WETHERSFIELD • CONNECTICUT

A Discount For Early Orders

To ease the spring burden on our office force we will allow the following discount from our catalog price.

On every order mailed to us before March 1st, where cash accompanies the order, you may deduct 5% of the total of the order when you make your remittance.

A Discount For Quantity Orders

In addition, we believe that the customer who orders a large quantity of seeds is entitled to a little better price than the man who orders only a small quantity.

So—on all orders amounting to more than \$10.00 at the catalog price you may deduct 5%; if over \$25.00 you may deduct 10%. These discounts apply only where cash accompanies the order and do not apply to credit orders, nor do they apply to the total amount remitted for two or more orders sent in during the season.

This discount for quantity orders is in addition to the discount for early orders.

DIRECTIONS FOR ORDERING

Please use order sheet in the back of the catalog. It will be of great help to us in filling your order quickly and correctly. Be sure to fill in your full name and address. If your order is to come by freight or express please write in your freight or express station if different from your Post Office.

Please keep a copy of your order. Many customers complain they have not received goods they have not ordered at all. At any rate, it is always wise to check over your order. If we have made a mistake (we sometimes do) we want to rectify it immediately.

How to send money. Remittances may safely be made by Post Office or Express Order, Bank Draft, Check or Registered Letter. We will accept stamps for sums less than one dollar. If bills are sent, always register the letter.

We guarantee the safe arrival of all orders. There is no need to send insurance money. We will take care of that.

24 Hour Service. All orders are filled the same day as received, except in the case of seasonal goods which will be sent when the weather permits.

Our Guarantee—We guarantee to the full amount of the purchase price:

The purity and quality of all seeds you buy from this catalog. Should failure result from any fault of the seed, you can have your money back.

However, this is the limit of our liability. Seeds are subject to so many climatic and soil conditions over which we have no control that:

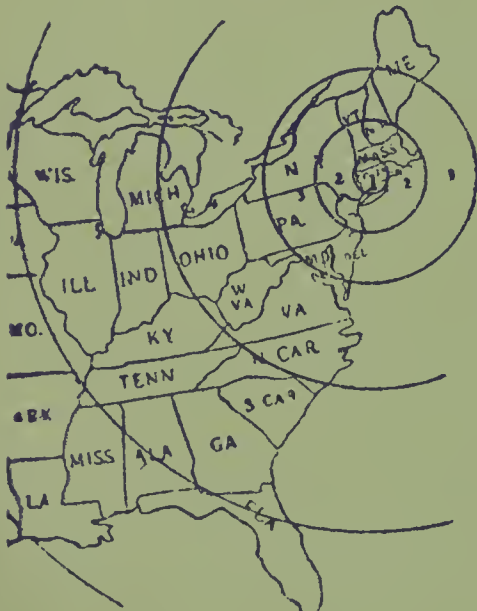
We give no warranty, express or implied as to quality, description, productiveness or any other matter of any seed we sell and will be in no way responsible for the crop. If the purchaser does not accept the seeds on these terms, they are to be returned at once.

Seeds by Parcel Post

Packages weighing 70 pounds can be sent into the first three zones and 50 pounds may be sent anywhere in the country.

We send **Prepaid** by Parcel Post all orders for the so-called small seeds. Peas, Beans, Corn, Onion Sets, Asparagus Roots, etc., are **Not Prepaid**, and the customer must remit postage for these with the order. We will pay transportation charges, however, on Peas, Beans, Corn and Onion Sets if your total order amounts to \$20.00 or more.

The Parcel Post rates are as follows:



Weight	1st and 2nd zone up to 150 mi.	3rd zone up to 300 mi.	4th zone up to 600 mi.	Weight	1st and 2nd zone up to 150 mi.	3rd zone up to 300 mi.	4th zone up to 600 mi.
1	\$0.08	\$0.09	\$0.10	14	\$0.23	\$0.35	\$0.56
2	.10	.11	.14	15	.24	.37	.59
3	.11	.13	.17	16	.25	.39	.63
4	.12	.15	.21	17	.26	.41	.66
5	.13	.17	.24	18	.27	.43	.70
6	.14	.19	.28	19	.28	.45	.73
7	.15	.21	.31	20	.29	.47	.77
8	.16	.23	.35	21	.30	.49	.80
9	.17	.25	.38	22	.32	.51	.84
10	.18	.27	.42	23	.33	.53	.87
11	.19	.29	.45	24	.34	.55	.91
12	.21	.31	.49	25	.35	.57	.94
13	.22	.33	.52				

THE CHAS. C. HART SEED COMPANY

WETHERSFIELD

304 MAIN ST.

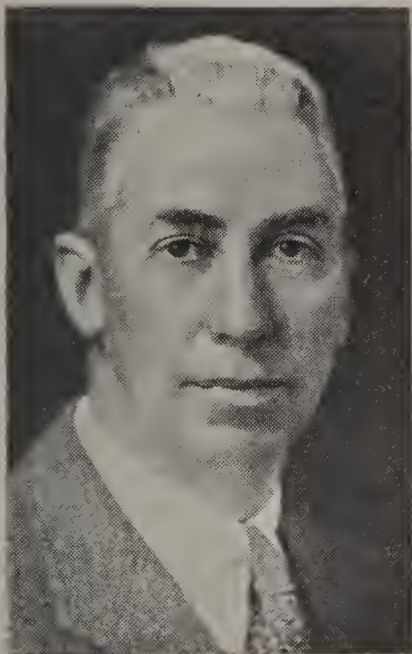
CONNECTICUT

GROWERS, IMPORTERS AND DEALERS IN VEGETABLE,
FIELD AND FLOWER SEEDS

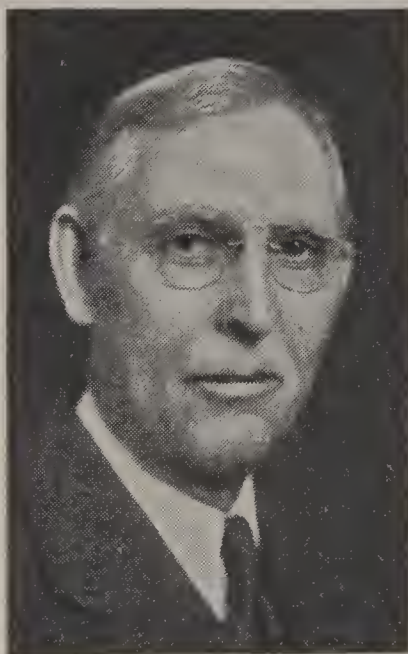
TELEPHONE, HARTFORD 9-1590

TELEGRAPH ADDRESS, HARTFORD

Member: American, New England and Connecticut Seed Trade Associations.



FRANK S. HART



CHARLES C. HART



WILLIAM G. HART

Dear Friends:

Everyone seems to have a private panacea to solve the economic ills of the country and we are no exception. Our pet formula is: "Say nothing and saw wood." Go about your business and forget it all. Work when you work and play when you play but — plant a garden. You'll get lots of fun and lots of good healthy exercise out of it and surprisingly enough you'll find it will save you quite a few pennies before the end of the year.

If you do plant a garden you'll need good seeds and that's where we come in, for Hart's Seeds have been Quality Seeds ever since 1892. We have never deviated one whit from our original intention of supplying nothing but the best even if we could make a little more money by handling something not quite as good.

We personally grow a larger tonnage of seeds here in New England than any other seed house and comparative trials have shown that New England grown seeds not only are better able to stand our rigorous climate but yield earlier and more productive crops.

Your orders will be promptly and carefully filled and most gratefully received.

With all best wishes for a very happy and prosperous year, we are

THE CHAS. C. HART SEED CO.



EVERETT H. HART

As before, every package of Hart's Garden Seeds is marked with the percentage of germination and every lot of grass seeds tells you both the purity and germination. Pure bred seeds of known parentage, cleaned and graded and of strong germination and vitality are a combination that is hard to beat.

Better Be Sure Than Sorry



FREDERICK C. HART

ASPERGE

ASPARAGUS SEED

SPARAGIO

One ounce to 800 plants, four pounds per acre.

Mary Washington—Absolutely rust resistant. A very strong grower with thick, heavy dark green tips. Pkt. 10¢; Oz. 15¢; 1/4 lb. 40¢; 1 lb. \$1.25.

ASPARAGUS ROOTS

Mary Washington—(1 year old) 50 for 85¢; 100 for \$1.50; 1000 for \$10.00. Not postpaid. (Weight 100—10 lbs.; 1000—70 lbs.)

Artichaut

ARTICHOKE

Articiocca

Green Globe—The Standard variety. Pkt. 10¢; Oz. 15¢; 1/4 lb. \$1.25.

BETTERAVE

BEETS

BARBABIETOLA

One ounce to 100 feet of drill; 10 pounds to the acre.

Our uniform strains of Beet are the finest on the market.



Perfected Detroit Beet

Hart's Early Wonder—The finest available early bunching Beet. Our splendid selection of this desirable early variety is unsurpassed and we confidently feel that no other strain offered can approach it for uniformity of size, shape and deep bright red color.

Perfected Detroit—A perfect globe-shaped strain of the old type Detroit, growing slightly smaller but earlier with small tops and fine tap roots. The skin is deep red and the flesh is solid red without zoning or light-colored rings, a truly remarkable selection.

New Bravo—Surprising uniform roots of the Detroit type, but considerably earlier, smoother skinned than any other variety and free from all fibers. Very deep, dark red flesh without the slightest trace of zoning and very sweet and sugary. This is the finest of all Detroit selections and we recommend it without hesitation.

Early Red Chief—Earliness and color are the two greatest factors in this remarkable selection from Dark Red Crosby. This is the fastest growing and earliest of all Beets and is a deep dark red all the way through, without zoning. Beat the market and earn extra profits with this wonderful new extra early variety.

All Beets 10¢ per pkt.; 15¢ per ounce.

	1/4 lb.	1 lb.	10 lbs.
Hart's Early Wonder —Finest of bunching Beets.....	\$0.35	\$1.00	\$9.00
Perfected Detroit —A perfect strain.....	.35	1.00	9.00
New Bravo —Earliest Detroit type.....	.40	1.40	13.00
Early Red Chief —Earliest of all Beets.....	.45	1.60	15.00
Crosby's —The popular dark red type. Preferred by many gardeners	.30	.75	7.00
Early Blood Turnip —An old standby with large flat roots.....	.30	.70	6.50
Detroit Dark Red —The finest for summer and fall bunching.....	.30	.90	8.00

MANGEL BEETS FOR STOCK FEEDING

6 to 8 pounds per acre.

	All Mangel Beets			
	Oz.	1/4 lb.	1 lb.	10 lbs.
Mammoth Long Red —The most popular and one of the heaviest yielders	\$0.10	\$0.15	\$0.45	\$4.00
Golden Tankard —Large oval yellow roots.....	.10	.15	.45	4.00
Improved White Sugar —Handsome white flesh, high in sugar content10	.15	.45	4.00

HARICOTS

BEANS

FAGIUOLI

1 pound to 150 feet of drill, 1-1¼ bushels per acre.

The customer pays transportation on beans unless your total order amounts to more than \$20.00 in which case the entire order will be sent prepaid. Over 25 lbs. will be supplied at the 100 lb. price. Beans weigh 60 lbs. to the bushel.

GREEN BEANS

Bountiful—The largest and heaviest yielding flat green Bean. Without question the finest stock of this favorite green-podded Bean. We challenge any other strain to produce a higher yield of these handsome, large and flat light green pods. Our many market gardener friends will bear witness to the high quality of our type.

Tendergreen—The finest of the round podded green Beans. Although still comparatively new, this handsome and early Bean has become one of the most popular on our list. The high yield and superior quality of its straight, round, green pods will commend this Bean to the most critical gardener.

Landreth's Stringless—A splendid improvement on the old type Burpee's Stringless, growing two inches longer than that type. A round Bean of really superior quality and flavor.



All Green Beans 20¢ per ½ lb.; 30¢ per lb.; 2 lbs. for 55¢.

Full Measure Beans

	10 lbs.	25 lbs.	100 lbs.
Bountiful —Finest Flat Green Pod.....	\$1.60	\$3.75	\$14.00
Tendergreen —The finest round pod.....	1.60	3.75	14.50
Landreth's Stringless —An improved new round pod.....	1.50	3.50	13.00
Black Valentine Stringless —An extremely prolific and early round Bean entirely stringless.....	1.60	3.75	14.00
Full Measure —A fine early stringless and round Bean, unexcelled for canning	1.60	3.75	14.00

SHELL BEANS

French Horticultural—Our superior strain of this splendid Bean is still "tops" with its handsome **Seven inch** pods liberally splashed with carmine. This Bean originated in New England, we secured our strain from the originator and continue to grow it in New England under our constant supervision. No wonder it brings better prices on the market.

Ruby Dwarf Horticultural—The old favorite "cranberry" bean so desirable for succotash.

Low's Champion—Useful also as green "snap" Beans and very superior as a shell variety.

Vermont or Old Fashioned Cranberry—A favorite Shell Bean in Northern New England which should be used elsewhere. The Beans and Pods are the largest in any of the dwarf types.

	½ lb.	1 lb.	2 lbs.	10 lbs.	25 lbs.	100 lbs.
French Horticultural	\$0.20	\$0.35	\$0.65	\$2.20	\$5.50	\$20.00
Ruby Dwarf Horticultural20	.30	.55	1.60	3.75	14.00
Low's Champion20	.30	.55	1.80	4.00	15.00
Vermont or Old Fashioned Cranberry20	.30	.55	1.80	4.00	15.00

FIELD OR BAKING BEANS

	½ lb.	1 lb.	2 lbs.	10 lbs.	25 lbs.	100 lbs.
White Marrow	\$0.15	\$0.25	\$0.45	\$1.40	\$3.25	\$12.00
White Kidney15	.25	.45	1.40	3.25	12.00
White Navy or Snowflake Pea15	.25	.45	1.40	3.25	12.00
Light Red Kidney15	.25	.45	1.40	3.25	12.00
Soldier —(The Richest and Meatiest).....	.15	.25	.45	1.40	3.25	12.00

WAX OR YELLOW PODDED BEANS

Pencil Pod Black Wax—The finest round podded wax Bean for home or market. Frequent roguing and particular attention to stock seed keeps our strain of this favorite Bean at the peak of perfection. Its long, round, waxy yellow pods are never marred by the "shorts" and "greens" so common to inferior strains.



Sure Crop Wax Beans

Sure Crop Wax—Justly the most popular flat Wax Bean. Also known as Bountiful Wax, this superior yielding Bean occupies the same position among Wax Beans that the Bountiful does in the green pods. Its enormous yields of long, straight, flat, bright yellow pods spell extra profits.

Davis Stringless Kidney Wax—A new flat straight Bean of exceptional merit. Long, straight, light yellow pods, absolutely stringless, characterize this desirable new Bean. Its tremendous yields and desirable appearance should deserve a place for it on every farm.

Unrivaled Wax—Truly "unrivaled" for early and heavy yields. An exceptionally early Bean, with long, narrow, flat pods which yields tremendously on very dwarf plants. Your pickers will turn in 50% more baskets in the same time on fields of Unrivaled.

All Wax Beans 1/2 lb. 20¢; 1 lb. 30¢; 2 lbs. 55¢.

	10 lbs.	25 lbs.	100 lbs.
Pencil Pod Black Wax —In all ways the best round pod.....	\$1.75	\$4.25	\$16.00
Sure Crop Wax —The superior flat pod.....	1.75	4.75	15.50
Davis Stringless Kidney Wax —An exceptional new flat pod.....	1.65	4.00	15.00
Unrivaled Wax —Early and heavy yielding.....	1.60	3.85	14.75
Round Pod Kidney Wax —Long, round, clear yellow pods of exceptional flavor	2.50	6.00	23.00
Top Notch Golden Wax —An unexcelled new strain of this popular, tasty flat Bean.....	1.75	4.75	15.50

LIMA BEANS

One pound of Dwarf Limas to 150 feet or about 60 pounds per acre.

One pound of Pole Limas to about 80 hills.

All Lima Beans 20¢ for 1/2 lb.

Burpee's Bush Lima—Large Flat Beans, very early. 1 lb. 30¢; 2 lbs. 55¢; 10 lbs. \$1.75; 25 lbs. \$4.25; 100 lbs. \$16.00.

Burpee's Imp. Bush Lima—Larger pods and beans. One more bean per pod than in the old variety. A trifle deeper green in color. 1 lb. 30¢; 2 lbs. 55¢; 10 lbs. \$1.85; 25 lbs. \$4.50; 100 lbs. \$17.00.

Fordhook Bush Lima—Our strain is justly the most popular on the large Long Island and South Jersey markets because of its high vitality and freedom from splitting. Fordhooks are one of our biggest specialties. 1 lb. 30¢; 2 lbs. 55¢; 10 lbs. \$2.15; 25 lbs. \$5.00; 100 lbs. \$19.00.

King of the Garden Pole Lima—Early and productive. 1 lb. 30¢; 2 lbs. 55¢; 10 lbs. \$1.65; 25 lbs. \$4.00; 100 lbs. \$15.00.

Mammoth Podded Pole Lima—The largest Lima Bean in existence. Immense Beans in immense pods. 1 lb. 35¢; 2 lbs. 65¢; 10 lbs. \$1.85; 25 lbs. \$4.50; 100 lbs. \$17.00.



Fordhook Bush Lima Beans

POLE BEANS

One pound to about 100 hills.

King Horticultural—A revelation if you have never tried it. Our strain of this remarkable but little known Bean produces immense pods 8 to 9 inches long, beautifully splashed and colored with rich yellow and carmine and very similar in appearance to French Horticulturals. The handsome pods bring a premium on every market and even a few poles will more than repay the extra effort.

All Pole Beans 20¢ per half pound.

	1 lb.	2 lbs.	10 lbs.
King Horticultural —An exceptional strain.....	\$0.35	\$0.65	\$2.25
Yard Long —A novel Green Pod which may be used as a Snap Bean, growing 30 to 35 inches long. 1/2 lb. 30¢.....	.50	.90	
White Dutch Runner —Large White Beans much like Limas.....	.30	.55	1.85
Scarlet Runners —A large edible Bean also used for decorative purposes30	.55	1.85
Kentucky Wonder or Old Homestead —The favorite pole "snap" Bean. Early and prolific and of excellent quality.....	.30	.55	1.65
Kentucky Wonder Wax —Long, flat yellow pods of fine quality.....	.30	.55	1.75

Chou Brocoli

BROCCOLI

Brocoli

One ounce will produce 2500 plants.

Early Green Calabrese—Our surpassingly fine strain of this wonderful vegetable comes to us from Naples and produces the desirable large closely packed central heads and solid side shoots so highly prized. Pkt. 10¢; 1 oz. 50¢; 1/4 lb. \$1.50; 1 lb. \$5.00.

Di Rapa—Known also as Caledonia Turnip or Senaps, this variety is relished for its turnip-like leaves and small flower heads which are eaten as greens. Pkt. 10¢; 1 oz. 15¢; 1/4 lb. 35¢; 1 lb. \$1.00.

Chou de Bruxelles

BRUSSELS SPROUTS

Cavolo di Brusseles

One ounce will produce 3000 plants.

Our Special Long Island Strain—Grown for us in the heart of the "Sprout" section on Long Island this wonderful selection outdistances all others in its high percentage of "hard" sprouts. Pkt. 10¢; 1 oz. 80¢; 1/4 lb. \$2.75; 1 lb. \$10.00.

CARDOON

Long Smooth Solid—Grown like Celery and served like Asparagus. Pkt. 10¢; 1 oz. 35¢; 1/4 lb. \$1.25; 1 lb. \$4.00.

CHICORY

(See Endive.)

COLLARDS

Georgia Green—A cabbage-like plant used for greens. Pkt. 10¢; 1 oz. 15¢; 1/4 lb. 25¢; 1 lb. 70¢.

CORN SALAD

Large Round Leaved—Large dark green buttery leaves. Pkt. 10¢; 1 oz. 15¢; 1/4 lb. 40¢; 1 lb. \$1.25.

CRESS

	Pkt.	1 oz.	1/4 lb.	1 lb.
Fine Curled (Pepper Grass).....	\$0.10	\$0.15	\$0.25	\$0.75
True Water Cress —Excellent for growing in frames or greenhouses15	.45	1.25	4.00

Chou Pomme

CABBAGE

Cavolo Cappucio

One ounce for 1500 to 2000 plants. Four to Six ounces per acre.



Golden Acre Cabbage

new strain of early, round heading Cabbage, maturing one week to ten days earlier than Golden Acre. Our stock is very short and we can offer this wonderful new money maker in limited quantities only. This is without exception the earliest Cabbage in existence.

Red Earliest of All—A splendid new **extra early** red Cabbage of superlative quality. It is early, very solid, of good size for the market, very even in size and shape and a dependable header.

Penn. State Ball Head—Our strain of this tremendous yielder is state sealed and certified. The round solid, heavy heads will produce practically 100% and outyield any other variety of Cabbage in total tonnage to the acre.

Golden Acre—(Original Strain) Universally considered the finest early Cabbage, Golden Acre reaches new heights in our splendid strain. Uniform in maturity, size and shape, it leaves little to be desired. We are proud of its universal acceptance.

Super Golden Acre—A real "Super" Strain. The evenness of this strain is remarkably surprising. All heads are exactly alike and a field at maturity attracts the most favorable attention. In addition it reaches the solid stage several days ahead of the original strain at a cost to you of less than \$1.00 more per acre. Isn't it worth it?

Moskow Market Pride—Earliest Cabbage grown. A superlative

All Cabbage 10¢ per packet.

	Oz.	¼ lb.	1 lb.
Golden Acre —Standard for early yields.....	\$0.30	\$1.00	\$3.75
Super Golden Acre —A superfine strain.....	.45	1.50	5.50
Moskow Market Pride —Earliest Cabbage known.....	.75	2.50	9.00
Red Earliest of All —Earliest Red Cabbage.....	.60	2.25	8.00
Penn. State Ball Head —Heaviest yielding.....	.40	1.25	4.50
Early Jersey Wakefield —An extra early heavy yielding pointed Cabbage of superlative quality. We offer an exceptionally fine strain30	1.00	3.75
Copenhagen Market —A fine round headed variety to follow Golden Acre and 3 to 4 pounds heavier than that sort. Our selection is very sure heading.....	.25	.90	3.50
Danish Round Head —Hard, solid balls, close set to the ground. More globe-shaped than the Ball Headed types.....	.30	1.00	3.75
Danish Ball Head —(Short Stem). We offer an excellent strain of this favorite main crop variety.....	.25	.90	3.00
Premium Late Flat Dutch —Large, flat, deep heads. Much relished for kraut25	.85	3.25
Perfection Drumhead Savoy —Our strain has a dark green color with a fine curly appearance and is very compact and uniform30	1.00	3.50
Mammoth Red Rock —The largest and best fall or early winter shipping and storing variety.....	.30	1.00	3.50

CHINESE CABBAGE

Chokurei —Long, solid, cylindrical heads.....	\$0.25	\$0.80	\$3.00
Market Pride —Short, chunky, tight heads.....	.25	.80	3.00

CHOU FLEUR

CAULIFLOWER

CAVOLO FLORE

One ounce to 1500 to 2000 plants.

Early American Snowball—A remarkable new strain of Cauliflower grown in the United States and the equal in every respect of any strain grown in Europe. We consider it a high honor to be privileged to present it. The sturdy and rugged plants produce large, deep heads with a tight curd of snowy white and every plant heads uniformly and evenly. We strongly urge you to give Early American Snowball a trial. Pkt. 20¢; 1/2 oz. \$1.40; 1 oz. \$2.50; 1/4 lb. \$9.00; 1 lb. \$32.00.

Super-Snowball—The Supreme Cauliflower. Pedigreed stock of this extremely early variety grown from a European gardener's strain. It has a deeper curd of better weight than any other strain we have seen and the entire crop heads evenly and uniformly. Why take chances with inferior strains when your total cost per acre is so little more with this Super-strain. Pkt. 20¢; 1/2 oz. \$1.25; 1 oz. \$2.25; 1/4 lb. \$8.00; 1 lb. \$30.00.

Early Snowball (Perfect)—Still the best main crop variety with large attractive heads of uniform size. This is the same strain we have offered so successfully for many years and we can assure you that it is not necessary to pay more than we charge for a highly satisfactory stock of this popular main crop variety. Pkt. 15¢; 1/2 oz. 85¢; 1 oz. \$1.50; 1/4 lb. \$5.50; 1 lb. \$20.00.

Danish Giant or Dry Weather—About ten days later than Snowball and more vigorous. It withstands drought or dry weather better than any other variety. Pkt. 10¢; 1/2 oz. 75¢; 1 oz. \$1.40; 1/4 lb. \$5.00; 1 lb. \$18.00.

Celeri **CELERY** Sedano

One ounce to 8000 plants;
20,000 plants per acre.

Wonderful or Golden Plume—Still the finest yellow Celery. Our proven stock produces very large stalks with thick, heavy hearts and an absolute minimum of "softs" and "greens." The germination is strong and vigorous and no matter what you pay for Celery you cannot secure a larger number of stalks than from this tried and tested seed.

Golden Pascal—A superb new yellow strain of this favorite. A taller and slightly later Celery than Golden Plume, but with the shape and remarkable quality of the popular Green Pascal. The very long, thick stalks readily blanch to a rich, creamy yellow and are very brittle and tender with a delightful nut-like flavor.

Utah or Salt Lake—Best of the Green Types. Extremely crisp, thick stalks of high quality which blanch very quickly with a smaller number of softs than in any other green Celery.

All Celery 10¢ per packet.

Golden Self Blanching—(Old Type.) Popular for late crops with large heavy hearts.....

Easy Blanching (Newark Market)—Leaves green and stalks pure white when blanched and of excellent quality

Giant Pascal—Large, solid green stalks which quickly blanch to a pure white. Our type is unusually free from "softs" and "strings".....

Golden Detroit—Broad, thick stems and tall stalks, of the Golden Self Blanching type but taller, thicker and very full hearted. Highly recommended.....

Wonderful or Golden Plume—Best of all.....

Golden Pascal—Superb new variety.....

Utah or Salt Lake—Finest Green Celery.....

Celeriac or Knob Celery—Large bulbous roots of high quality



Golden Detroit Celery

	1/2 oz.	1 oz.	1/4 lb.	1 lb.
Golden Self Blanching	\$0.35	\$0.60	\$2.25	\$8.00
Easy Blanching (Newark Market)	.35	.60	2.00	7.00
Giant Pascal	.25	.45	1.50	5.00
Golden Detroit	.35	.60	1.75	6.00
Wonderful or Golden Plume	.40	.75	2.25	8.00
Golden Pascal	.50	.90	3.25	11.00
Utah or Salt Lake	.40	.75	2.25	8.00
Celeriac or Knob Celery		.25	.75	2.50

CARROTE

CARROT

CAROTA

One ounce to 300 feet of drill; 3-4 lbs. per acre.



Imperator Carrot

Imperator—The finest for bunching. Also known as the "California" this quality Carrot is very popular with the high-class trade. The long, smooth, tapering roots are a deep orange in color with a minimum of core, and cook up tender and sweet.

Claudia—A new Extra Early. A splendid new Carrot of European origin. The half-long tapering roots have a deep orange-red color and are practically coreless. They mature unusually early and we look forward to a life of great popularity for the Claudia.

Supreme Half Long—For the discriminating trade. Another new variety of exceptional merit for those who consider Danvers a trifle too short and Imperator a bit too long. The Supreme strain is midway between the two and is practically cylindrical with a blunt end and is a rich orange-red in color and of delicious texture and flavor.

Chantenay Special No. 403—Desirable for early bunching. Seven inch roots tapering slightly with blunt ends and maturing fully as early as Chantenay. Highly desirable for those who want a somewhat longer carrot than Chantenay without sacrificing earliness.

Hutchinson—(One generation removed from Waltham strain.) Our strain of this popular New England variety needs no introduction. The long, cylindrical roots will grow 12 to 15 inches long and are a beautiful deep orange in color, shading to a light green on the shoulders. No Carrot known produces a greater yield than Hutchinson. Our superior strain costs more and is worth it.

All Carrot 10¢ per packet; 15¢ per ounce.

	1/4 lb.	1 lb.	10 lbs.
Imperator —Best Bunching Carrot.....	\$0.40	\$1.00	\$9.00
Claudia —Earliest Bunching Carrot.....	.40	1.25	11.00
Supreme Half Long —Unexcelled appearance.....	.40	1.10	10.00
Chantenay Special —Early and desirable.....	.40	1.00	9.00
Hutchinson —Super strain for New England Gardeners.....	.50	1.85	17.00
Tendersweet —The Sweetest and finest textured Carrot grown. Eight to ten inches long, tapering, and practically coreless. For table use or canning this has no equal.....	.45	1.25	11.00
Scarlet Nantes —(Coreless.) Absolute cylinders with blunt ends and entirely coreless. Housewives prefer it for slicing and dicing and its attractive appearance sells it readily.....	.40	1.30	11.50
Danvers Half Long —The old favorite and a very heavy cropper....	.30	1.00	9.00
Chantenay Red Cored —The coreless Carrot which has displaced the old type Chantenay, being smoother, more uniform and more attractive35	1.00	9.00
Improved Long Orange —Foot long roots yielding heavily.....	.30	.90	8.00

CONCOMBRE

CUCUMBER

CETRIOLO

One ounce to 50 hills; 3 pounds per acre.

Hybrid White Spine—For heaviest yields. Although a mid-season variety the extra yields per acre of this long, handsome Cucumber make it one of the most valuable for a gardener to grow. It holds its rich green color a long time and stands up extremely well. Our strain is as fine as it is possible to secure.



Hybrid White Spine Cucumber

Straight Eight—Handsome and prolific. Every fruit uniformly 8 inches long—as though poured from a die—straight and smooth and a pleasing dark green in color. This uniformity of size and color coupled with its extremely high yield deserve for it a place on every trucker's list. Our strain is from the originator's stock.

A. & C.—Long and attractive. Probably the handsomest Cucumber grown with 11 inch fruits, uniform and cylindrical throughout their length, terminating in blunt, well rounded ends and of a very deep dark green color. Handsome and desirable both for shipping and for market gardens. Our strain is top-notch.

Longfellow—Longest Cucumber grown. Fruits 12 to 15 inches long, borne very early, dark green, uniform and attractive. This is the **premium** Cucumber and we consider it the highest quality Cuke of all. Naturally, we have devoted considerable time to the perfection of this splendid type.

Perfect Pickling—Prolific and early. Our selection of an ideal pickling variety. Early, highly productive, uniformly shaped and colored, it leaves little to be desired. When mature, the fruits are 5 to 6 inches long, straight, blunt ended and a medium deep green.

All Cucumbers 10¢ per packet; 15¢ per ounce.

	¼ lb	1 lb.	10 lbs.
Hybrid White Spine —The heaviest yielder.....	\$0.35	\$1.25	\$11.50
Straight 8 —Most perfect appearance.....	.45	1.60	14.00
A. & C. —Long, attractive and prolific.....	.50	1.75	16.00
Longfellow —A long, slender, deep green.....	.50	1.75	16.00
Perfect Pickling —Not only the heaviest yielder but the earliest.....	.45	1.60	15.00
Black Diamond — Early and prolific. Much prized for its ability to hold its color and firmness for a long period of time.....	.35	1.25	11.50
Early Fortune — A splendid White Spine type. Very early and productive. Color light green with a trace of white at the stem.....	.30	1.00	9.00
Improved White Spine —Early and productive.....	.30	1.00	9.00
Davis Perfect —Very long, straight fruit tapering at the ends with a rich deep green color.....	.35	1.25	11.50
Improved Long Green —We have a very pure strain.....	.35	1.25	11.50
Boston Pickling —The standard for commercial pickling use. Blunt ended fruits, 6 inches long.....	.30	1.00	9.00
China Long —An edible novelty 15 to 20 inches long.....	.50	1.85	

MAIS

SWEET CORN

MAIS

One pound to 200 hills; 15 pounds per acre.

Connecticut grown Corn is famous for flavor and sweetness. Our Corn is all produced in the rich and fertile Connecticut River Valley. Nothing can compare with it.

Sweet Corn is not postpaid unless your total order amounts to more than \$20.00 in which case the entire order is sent prepaid.

WHITE VARIETIES

1/2 lb. 15¢; 1 lb. 25¢; 2 lbs. 45¢

	10 lbs.	25 lbs.	100 lbs.	
Columbia —The earliest large-eared corn grown. Sweet and tasty and of high quality.....	\$1.65	\$3.75	\$14.00	
Lyman's Pride —A mid-season Corn with immense kernels which hold their deliciously tender flavor and milkiness for a long time. We recommend this highly.....	1.85	4.25	16.00	
Black Mexican —Many people prefer the blackish-blue kernels....	1.85	4.25	16.00	
Long Island Beauty —Immense ears nearly 12 inches long.....	1.65	3.75	14.00	
Stowell's Evergreen—Selected —An old favorite and still one of the sweetest	1.65	3.75	14.00	
Country Gentleman —High quality, late corn with irregular row formation. Often called Shoe-Peg.....	1.75	4.00	15.00	
Pop Corn —	1/2 lb.	1 lb.	2 lbs.	10 lbs.
White Rice	\$0.12	\$0.20	\$0.35	\$1.40
Queen's Golden or T. N. T.....	.12	.20	.35	1.40
Black Beauty12	.20	.35	1.40

YELLOW OR GOLDEN VARIETIES

Golden Early Market or Extra Early Golden—There are many inferior strains of this most valuable of early varieties. Our stock has been grown under our own supervision since we secured our original strain, and we believe we have today as pure an early, large-eared strain as there is available. The 7 to 8 inch ears of broad, yellow kernels sell readily and are available when other gardeners are bringing in small undersized ears.

Golden Sunshine—Good for market as well as the home garden. For several years we have selected Golden Sunshine for earliness and size and can offer today a Corn nearly as early as Golden Market, a trifle longer but slimmer, possessing the delicious flavor of Golden Bantam.

Hart's Golden Bantam—Extra early, extra heavy yielding and extra sweet. Eight rows of large, plump Golden Yellow kernels, bursting with sweetness. The very appearance of our Golden Bantam is irresistible. There is no heavier yielding, earlier or more attractive Bantam offered than this—the yardstick of quality.

All Yellow Corn 1/2 lb. 15¢; 1 lb. 25¢; 2 lbs. 45¢.

	10 lbs.	25 lbs.	100 lbs.
Golden Gem —The earliest Corn grown. Especially in Northern New England	\$1.65	\$3.75	\$14.00
Spanish Gold —Extremely early, long, slender ears of high quality	1.65	3.75	14.00
Early Yellow Sensation —Much like Golden Market but slightly earlier and slightly smaller.....	1.65	3.75	14.00
Golden Early Market —The money maker of early corn.....	1.75	4.00	15.00
Golden Sunshine —Our improved strain leaves little to improve on	1.75	4.00	15.00
Hart's Golden Bantam —The yardstick of quality.....	1.75	4.00	15.00
Whipple's Early Yellow —The largest, heaviest main crop variety	1.65	3.75	14.00
Twelve-Rowed Bantam —Highly prized for canning due to its heavy yield and delicious flavor.....	1.65	3.75	14.00
Golden or Bantam Evergreen —The old favorite Evergreen type in a rich golden yellow. The standard for late Corn.....	1.65	3.75	14.00
Golden Colonel —For quality and sweetness. Irregular kernels like Country Gentleman but a pleasing creamy yellow in color.....	1.85	4.25	16.00



Golden Cross Hybrid Corn

HYBRID CROSSED CORN

No longer a freak or a novelty, Hybrid Corn has assumed a very definite place in the market gardening and canning industry. Vigorous, sturdy plants, a good sound ear on every stalk, no weak or spindling plants, few nubbins or mouldy ears, high resistance to Stewart's Disease and an ability to ripen the field at nearly the same time are the outstanding characteristics of Hybrid Corn. Thus a field of one of the proven crosses we offer will outyield a corresponding field of open-pollinated Corn by 25 to 75 percent. Your additional seed cost per acre will average \$3.00. With Corn at its very cheapest, 5 or 6 hundred extra ears will pay for the extra seed cost. Yet you will pick from 4 to 6 thousand extra ears. Isn't it wisdom to plant crossed corn?

(Listed in the order of their maturity.)

All Hybrids 1/2 lb. 25¢; 1 lb. 40¢; 2 lbs. 75¢.

	10 lbs.	25 lbs.	100 lbs.
Spancross C2 —The earliest hybrid, ears 6½ inches long, 12 to 16 rowed, 9,000 per acre.....	\$3.50	\$8.00	\$30.00
Marcross C3 —One day later. 7 inches long, 12 to 14 rowed, 10,000 marketable ears per acre. Highly resistant.....	3.60	8.50	32.00
Gemcross C6 —One day later. 6½ inches long, 10-12 rowed, broad kernels. 9,000 ears per acre. Desirable for New England.....	3.50	8.75	33.00
Marcross C6 —Broad heavy kernels, high resistance. 7 inches long, 10-16 rowed. 10,000 ears per acre.....	3.75	9.25	35.00
Spancross P39 —Highest quality and flavor of the early hybrids, 7 inches long, 8 to 14 rows. 13,000 good ears per acre.....	3.60	8.50	32.00
Marcross P39 —Largest ears of early hybrids, 7½ inches long, 10-16 rows, 12,000 ears per acre.....	3.25	7.50	28.00
Suncross P39 —(Tendergold) 7½ inches long, 10-14 rows, 12,000 to the acre. Of high quality succeeding best in northern areas	3.00	7.25	27.00
Stancross or Charlcross P39 —A cross on Charlevoix. 7 inches long, 10-16 rows. 14,000 per acre of surpassing quality and flavor.....	3.00	7.25	27.00
Early Bancross P39 —7½ inches long, 10-14 rows, 15,000 handsome ears per acre of most remarkable quality, flavor, appearance and yield	3.00	7.25	27.00
Golden Cross C2 —Beautiful ears like Golden Cross, maturing nearly 10 days earlier. One of the highest quality for road stands and home gardens.....	3.00	7.25	27.00



Marcross Hybrid Corn

	10 lbs.	25 lbs.	100 lbs.
Whipcross P39 —7½ inches long, 12-14 rows, 15,000 tremendous ears to the acre. Remarkable for immense size and yield.....	3.00	7.25	27.00
Golden Cross —To crossed Corn what Golden Bantam is to the open-pollinated varieties. 7½ inches long, 10-14 rows, 14,000 per acre. Slender ears with deep kernels of delicious tenderness and flavor.....	3.25	7.50	28.00
Bangreencross P39 —7½ inches long, 12-14 rows, 14,000 per acre. Mammoth ears with heavy deep kernels of the Evergreen type	3.00	7.25	27.00
Redgreen —The finest white hybrid of the Evergreen type. Really of remarkable appearance. 7½ inches long, 10-12 rows, 16,000 large, even, uniform, snowy white ears per acre.....	3.75	9.25	35.00
Pearlcross —A cross on our Early Pearl (the sweetest Corn in the world) which doubles the size and doubles the yield without sacrificing the deliciously sweet and delightfully tender flavor of that surpassing variety. 7 inch ears with long pearly white kernels in 10 to 12 rows, borne over 16,000 to the acre. The finest Corn you can set on your table and the greatest advertisement for quality a road stand or market gardener can offer to his customers. They all come back for more.....	4.00	9.40	37.00

Early Pearl — The Sweetest Corn in the World

The peak of perfection. In no place in the world does Sweet Corn, the most delightful of all native delicacies, attain its finest flavor than in the fertile Connecticut River Valley and no Corn can even begin to approach the delicate flavor and delightful taste of our Early Pearl. This really remarkable Corn grows about 5 inches long, just the right size for the high class hotel and restaurant trade, and is 12 rowed, with long, deep, snowy-white kernels. The tender thin pericarp breaks readily to release the delicious "sweet" milk of the Corn with its delicate honey-like flavor, and even if the ears are allowed to stand on the stalks for nearly two weeks, they will still retain their delicious tenderness.

We have had so many glowing reports and so many letters of praise from our customers, that we want others to try Early Pearl; we know you will be delighted. If you have only a small space for a garden nothing will repay you more than a few hills of Early Pearl—that is if you appreciate fine things—and who doesn't like fine things to eat? Pkt. 10¢; ½ lb. 20¢; 1 lb. 35¢; 10 lbs. \$2.80; 25 lbs. \$6.75; 100 lbs. \$25.00.

All Seed on this Page 10¢ per pkt.

Pissenlit

DANDELION

Dente di Leone

1 oz. to 100 feet of drill.

Italian Dandelion—(Cicoria Catalogna.) A favorite Italian "greens" plant. We have the true strain imported from Naples.....

Arlington Thick Leaf—The finest Market Gardeners' strain, with stocky, very broad leaved plants with heavy white ribs. We offer only fresh seed of strong germination.....

Oz.	1/4 lb.	1 lb.
\$0.25	\$0.75	\$2.50
.45	1.25	4.75

Aneth

DILL

Aneto

Long Island Mammoth—Very large and prolific.....

Oz.	1/4 lb.	1 lb.
\$0.15	\$0.25	\$0.70

Endive

ENDIVE

Endivia

1 oz. to 150 feet of drill; 3 lbs. to the acre.

French Endive—(Witloof Chicory.) A useful addition to the winter income, being grown in a dark place. We have an exceptionally well developed strain from the best Belgian heads.....

Full Hearted Escarolle—Our selection produces tightly packed heads with broad deep leaves, blanching easily.....

Green Curled—Finely cut and curled leaves. Very easy to blanch

Prizewinner—Unusually fine curled, extra compact, single line strain, especially valuable to market gardeners. Matures extremely early

Oz.	1/4 lb.	1 lb.
\$0.15	\$0.50	\$1.75
.15	.45	1.50
.15	.45	1.50
.20	.60	2.20

Aubergine **EGG PLANT** Petronciano

1 oz. produces 2,000 plants.

Black Beauty—Strong, sturdy plants with a heavy yield of beautiful dark purple fruit. We have an excellent strain. Oz. 40¢; 1/4 lb. \$1.20; 1 lb. \$4.00.

New York Improved—Later and larger than the above. Oz. 40¢; 1/4 lb. \$1.20; 1 lb. \$4.00.

Long Purple Italian—Early and club-shaped. Best imported seed. Oz. 40¢; 1/4 lb. \$1.20; 1 lb. \$4.00.



Black Beauty Egg Plant

Fenouil **FENNEL** Finnochio

Sweet Florence—The true Italian strain with large bulbous roots. Oz. 15¢; 1/4 lb. 35¢; 1 lb. \$1.25.

Chou Vert **KALE** Cavolo Verde

1 oz. to 150 feet of drill; 4 pounds per acre.

Dwarf Curled—Dwarf and spreading. Very curly and a deep blue-green in color. Oz. 15¢; 1/4 lb. 35¢; 1 lb. \$1.10.

Dwarf Siberian—Broad, light green leaves curled on the edges. Oz. 15¢; 1/4 lb. 30¢; 1 lb. 90¢.

Chou-Rave **KOHL RABI** Cavolo Rabi

1 oz. to 200 feet.

White Vienna—Early round, snowy white bulbs, sweet and delicious

Early Purple—Same as the above but with purple skin.....

Triumph of Prague—The perfect stock. Most uniform in shape, size and color and the most beautiful white Kohl Rabi ever grown. Originators' stock.....

Oz.	1/4 lb.	1 lb.
\$0.20	\$0.60	\$2.25
.20	.60	2.25
.25	.75	2.50

Poireau

LEEK

Porro

1 oz. to 200 feet of drill.

Large American Flag—Large, thick, sturdy stalks with smooth, clear pearly white bottoms, blanching far up. The finest market strain

\$0.20	\$0.60	\$2.25
--------	--------	--------

LAITUE

LETTUCE

LATTUGA

1 oz. to 300 plants; 3 pounds to the acre.



New York Lettuce, No. 12

New York No. 12 or California Iceberg—Our improved early strain of this unsurpassed Lettuce is practically 100% sure heading and is especially valuable for early spring sowing.

New York No. 515—A new "hot weather" Lettuce. A wonderful new strain of New York Head which is earlier and withstands hot, dry weather much better. The type and appearance is very similar to No. 12 with few outside leaves and large, solid heads, and is an attractive bright green in color. Try this by all means. Our strain is very dependable.

Atlantic—A new Lettuce which fills a much needed want for a

high quality forcing or frame Lettuce without the red tinge on the outer leaves. This is a great improvement over May King and is much larger and longer standing.

All Lettuce 10¢ per packet.

	Oz.	¼ lb.	1 lb.
New York Head No. 12 —Best for early sowing.....	\$0.20	\$0.60	\$2.00
New York Head No. 515 —Sure heading in hot weather.....	.20	.70	2.25
Atlantic —Finest frame, or forcing variety.....	.25	.85	3.00
May King —Very early for forcing in frames.....	.15	.40	1.25
Hartford Bronze Head —(Crisp as Ice.) Early, tight, compact heads, tinged with bronze. Very crisp and of high quality.....	.25	.75	2.50
Big Boston Special —Our strain heads uniformly and stands a long time before bolting. Very fine.....	.15	.40	1.25
Iceberg —Large, solid heads with curled, blistered leaves; a pleasing light green.....	.15	.45	1.50
Romaine or Cos—Self Folding —Long, large heads of the highest quality. We have a very high class strain.....	.15	.45	1.50
White Boston —Uniform and sure heading. Our strain shows a remarkably high resistance to "Tip-burn".....	.15	.50	1.75
Salamander (Black Seed Tennisball) —Large heads with an ability to stand hot weather without burning.....	.15	.40	1.25
Simpson's Early Curled —A fast growing leaf lettuce for home gardeners.....	.15	.35	1.00
Early Prizehead —Crisp loose heads deeply curled and tinged with reddish brown.....	.20	.55	1.75
Grand Rapids Special —Large, robust well curled heads in a delightful light green. Our strain is superlative.....	.20	.55	1.75

POPONE

MUSKMELON

MELON

1 oz. to 50 hills; 2 pounds to the acre.

Delicious—The earliest large melon grown. This popular improvement on the Bender's ripens one week to ten days earlier and grows nearly as large. It is really delicious and sells readily on the roadside stand. Our strain is from hand cut melons, and is the equal of any on the market.

Bender's Surprise—Northern grown and carefully selected. Attractive appearance, fine flavor, large size and long keeping qualities, make this wonderful variety the most desirable on the whole melon list. Our strain is, of course, one of the finest on the market and there is no need to pay more.

Sugar or Honey Rock—Sweet and delicious. These round melons with their light grey network are packed with deep-orange delicious flesh and are hard as a rock even when fully ripened. This melon is one of the most attractive grown.

All Muskmelon 10¢ per packet.



Bender's Surprise Muskmelon

	Oz.	1/4 lb.	1 lb.
Delicious —Earliest large melon grown.....	\$0.20	\$0.50	\$1.75
Bender's Surprise —Large and productive.....	.20	.45	1.50
Honey Rock —Sweetest and most attractive.....	.20	.45	1.50
Emerald Gem —Small, round, green melons with yellow flesh. Early, sweet and productive.....	.15	.35	1.10
Osage (Miller's Cream) —Oval shaped, dark green and netted, with yellow flesh.....	.15	.35	1.10
Hearts of Gold —Medium, round and netted, orange-yellow flesh of high flavor and quality. An excellent shipper.....	.15	.35	1.25
Golden Champlain —The earliest melon grown. Oval shaped and of good quality. Best for localities with short growing season.....	.20	.40	1.40
Rocky Ford —A small, high-flavored, light green fleshed melon.....	.15	.35	1.10

MELON D'EAU

WATERMELON

MELONE D'AQUA

1 oz. to 20 hills; 3 to 4 pounds per acre.

Stone Mountain—Best for market. A large, round, blocky melon. Very sweet scarlet flesh with few seeds.

Wondermelon—Heaviest Bearer. Long, thick melons with glossy green skin and deep scarlet flesh, very sweet and juicy. One of the most prolific of all melons.

All Watermelon 10¢ per ounce.

	1/4 lb.	1 lb.
Stone Mountain —Best for market.....	\$0.30	\$0.90
Wondermelon —The heaviest producer.....	.30	.90
Cole's Early —Round, deep red and sweet.....	.25	.75
Ice Cream —Oblong, very sweet, bright scarlet flesh.....	.25	.75
Mountain Sweet —Large, medium early. Very sweet.....	.25	.75
Citron —Red seeded, for preserves.....	.25	.75

MUSTARD

1 ounce to 300 feet of row.

	Oz.	1/4 lb.	1 lb.
Southern Giant Curled —Large, green crumpled leaves of fine flavor	\$0.10	\$0.25	\$0.75
Fordhook Famous —Large, deep green leaves, very pungent.....	.10	.25	.75

OKRA

1 ounce to 50 feet of row.

	Oz.	1/4 lb.	1 lb.
Perkins Mammoth —Large green pods.....	\$0.10	\$0.25	\$0.65
White Velvet —Round light green pods.....	.10	.25	.65

OGNON

ONION

CIPOLLO

1 ounce to 125 feet; 5-6 lbs. per acre.

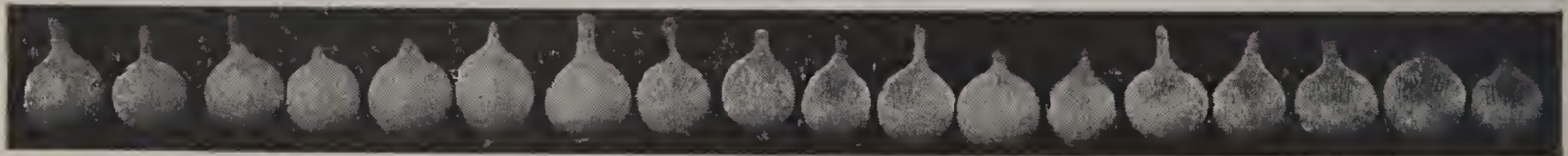
Hart's Onion Seed Always Germinates Better than 90%.

Early Yellow Globe—The finest extra early yellow. Extra early, truly enormous crops of fine globe-shaped, bright straw colored bulbs make this Onion the most popular variety introduced in recent years. Their thick skin does not shuck off in handling and keeps very well in storage. We handle only the originator's stock.

Riverside Sweet Spanish—These large, handsome, yellow Onions are not at all difficult to grow provided they are started early and well repay the extra time required. The bulbs often weigh a pound or more and have excellent storage qualities and are always very sweet and mild. Every Onion grower should devote a portion of his acreage to this profitable variety.

All Onion Seed 10¢ per packet.

	Oz.	1/4 lb.	1 lb.	10 lbs.
Early Yellow Globe —A splendid new extra early.....	\$0.20	\$0.60	\$2.00	\$19.00
Riverside Sweet Spanish —Huge, attractive bulbs.....	.20	.50	1.85	17.50
Wethersfield Red —The popular favorite. A very large, flat deep red.....	.15	.45	1.55	14.50
Southport Red Globe —A perfect globe shaped red and a splendid keeper.....	.15	.50	1.65	15.50
Yellow Globe Danvers —We offer a highly perfected strain of this popular round type.....	.15	.45	1.50	14.50
Japanese or Ebenezer —A fine mild, light yellow onion with unexcelled keeping qualities. Very desirable for "set" Onions15	.50	1.65	15.50
Southport Yellow Globe —Somewhat later than Globe Danvers, but of a more attractive globe shape and appearance15	.50	1.75	16.00
Prizetaker Yellow —A very large, handsome globe shape of mild flavor.....	.15	.50	1.75	16.00
Southport White Globe —A large and very handsome globe, which always commands high prices.....	.15	.50	1.75	16.00
White Portugal —Flat white bulbs of mild flavor excellent for pickles and early "greens".....	.15	.50	1.80	16.50



ONION SETS

One peck to 600 feet of row or 20-30 bu. per acre.

We do not pay transportation on Onion Sets.

32 lbs. per bushel.

	1 lb.	8 lbs.	1 bu.	5 bu.
		1/4 bu.		per bu.
Japanese or Ebenezer —The finest yellow.....	\$0.25	\$1.00	\$3.00	\$2.85
White —Best for bunching.....	.25	1.00	3.25	3.10
Red —Strong flavored25	1.00	3.10	3.00



Persil

PARSLEY

Prezzemolo

1 oz. to 150 feet.

10¢ per packet.

	Oz.	1/4 lb.	1 lb.
Triple Curled —An extremely handsome new strain with very densely curled rich dark green leaves on long stems.....	\$0.15	\$0.35	\$1.00
Plain Leaved —Uncurled. Used for flavoring and drying.....	.15	.30	.90
Hamburg or Turnip Rooted —Smooth white roots.....	.15	.30	.90

POIS

PEAS

PISELLO

1 pound to 100 feet of drill; about two bushels per acre.

56 pounds to the bushel.

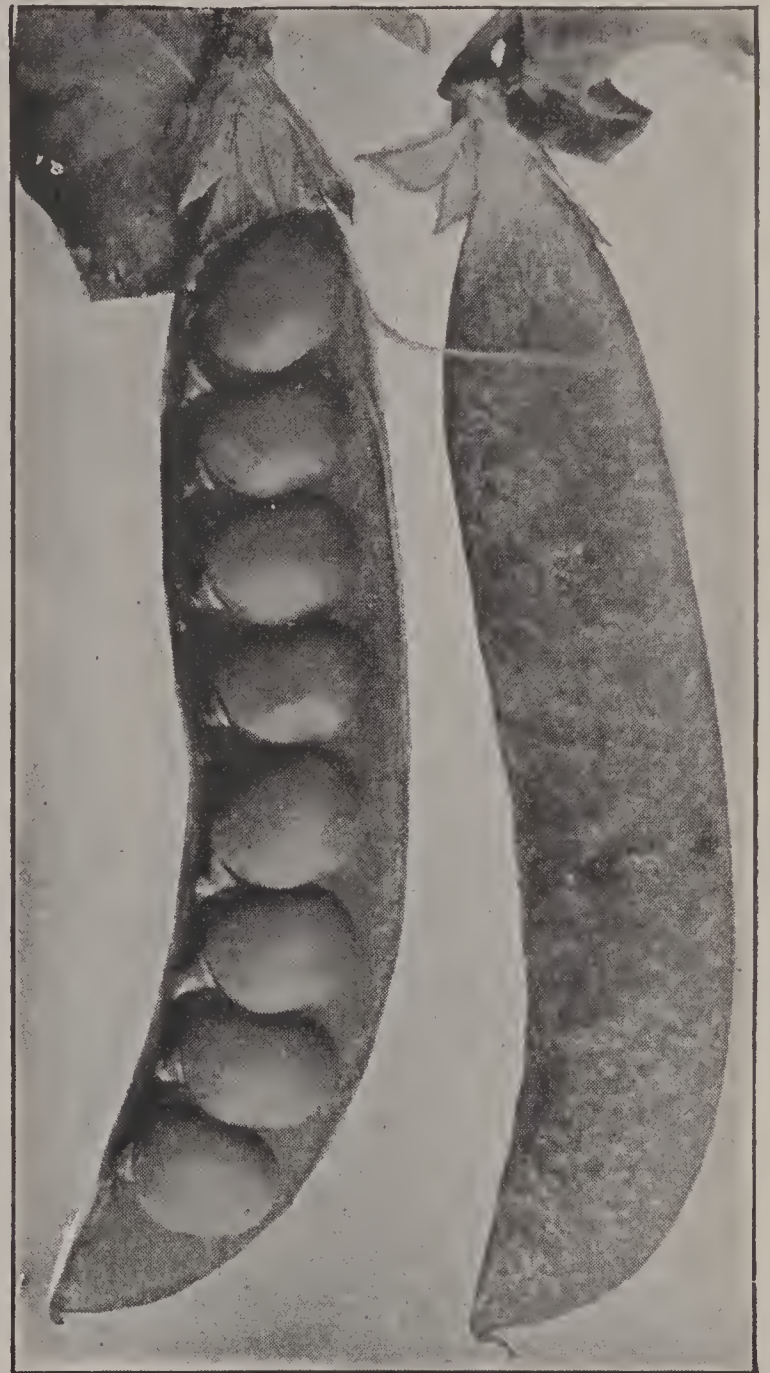
Over 25 pounds of one variety at the 100 pound rate. Peas are not shipped postpaid. If your entire order amounts to more than \$20.00, however, we will pay all transportation charges.

Roger's Gilbo—A wonderful new Mammoth Podded main crop. A midseason Pea producing immense pods on very dwarf straw. The yield is extremely heavy and the handsome dark green pointed pods are in our opinion superior in appearance to anything on the market. A trifle earlier and hardier than our New Deal.

New Deal—Our popular midseason variety. This desirable Pea needs no introduction to our old customers. Its large, deep green pods are borne on rich green dwarf vines and mature just after the very early varieties. Thus it catches the market at a time when prices are generally high. Its ability to stand hot, dry weather makes it perfect for late plantings. Do not, however, make plantings until the weather is fully settled.

Roger's Grand Old Pod—Another remarkable new midseason variety producing very large Peas in very large pods on vines only 24 inches in height. This promises to be one of the most prolific and popular varieties of Peas yet introduced.

World's Record—Probably the earliest large podded Pea under cultivation. At least our strain seems that way in comparison with many others we have seen. World's Record is the best money maker for the gardener and our prolific and heavy bearing strain is one of the finest on the market. You will make no mistake in planting World's Record.



Laxton's Progress Peas

All Peas 15¢ per 1/2 lb; 25¢ per lb.; 45¢ per 2 lbs.

	10 lbs.	25 lbs.	100 lbs.
Improved Gradus —Early large podded Pea of high quality. Vines 2 1/2 feet high.....	\$1.65	\$3.75	\$14.00
Easy Money —Similar to Gradus but only 2 feet high.....	1.75	4.00	15.00
Mammoth Podded Extra Early —A very profitable early large podded semi-smooth Pea which is gaining rapidly in popularity. This Pea is extremely hardy and will stand extra early planting	1.65	3.75	14.00
Thomas Laxton —Very early with medium size pods of the highest quality	1.65	3.75	14.00
Laxton's Progress —Large, handsome, well filled pods borne on vines 15 to 18 inches high, this Pea is most profitable to follow the extra early taller sorts. Our strain has been very carefully roged	1.75	4.00	15.00
Hundredfold —(Improved Blue Bantam and Laxtonian.) The best Pea in the so-called Laxtonian or early dwarf type. The 4 inch pods are a deep blue-green in color and are borne on vines about 18 inches high. This Pea is an extremely heavy yielder and produces an immense quantity of very uniform pods.....	1.75	4.00	15.00
Little Marvel —A very prolific Pea of extremely high table quality. The Peas and pods are somewhat small, but a tremendous amount of pods may be harvested from only a short row. The pods are borne in pairs.....	1.65	3.75	14.00

Nott's Excelsior —(Premier.) One of the finest early dwarf varieties. A heavy yielder of very high quality.....	10 lbs.	25 lbs.	100 lbs.
Sutton's Excelsior —Larger Peas and Pods than in the Nott's type	1.65	3.75	14.00
Dwarf Alderman —(Superior to Dwarf Telephone.) One of the finest large podded dwarf varieties the pods being borne in great profusion on strong and sturdy vines about 2 feet high. A very attractive variety which commands good prices on the mid-season market	1.75	4.00	15.00
Improved Dark Podded Telephone —(Alderman Type.) Tremendous pods growing nearly 6 inches long on tall vines. This is the finest of all Peas and although it requires support will outyield all others	1.65	3.75	14.00
Roger's Gilbo —Splendid new giant main crop.....	1.95	4.50	17.00
New Deal —Outstanding in popularity.....	1.85	4.25	16.00
Roger's G. O. P. —Tremendous pods and heavy yields.....	2.10	4.75	

PANAIS

PARSNIP

PASTINACA

1 oz. to 100 feet; 6 pounds per acre.

Ideal Hollow Crown—A beautiful snowy white. Handsome, large roots, long and tapering but smooth and fine with no side roots or "fingers." We have worked hard to perfect this fine strain. Our seed always shows a strong germination and high vitality.

All Parsnip 10¢ per packet; 15¢ per ounce.

Ideal Hollow Crown —Handsome robust roots.....	1/4 lb.	1 lb.	10 lbs.
Guernsey Half Long —Medium length roots with a greater diameter than the Ideal.....	\$0.35	\$1.00	\$9.00
Short Thick —Heavy short roots for growing on heavy soils or where deep cultivation is not practical.....	.30	.80	7.00
	.35	1.00	9.00

Potiron

PUMPKIN

Zucca

1 ounce to 20 hills; 4 pounds per acre.

All Pumpkin 10¢ per oz.

Connecticut Field or Big Tom —Large golden yellow of fine quality.....	1/4 lb.	1 lb.
Small Sugar or Pie —Small, round, very prolific, fruits unsurpassed for table use	\$0.25	\$0.65
King of the Mammoth —Largest of all.....	.25	.70
Large Cheese —For stock feeding.....	.45	1.10
	.25	.65

PIMENT

PEPPER

PEPERONE

1 oz. produces 1500 plants.

Our Pepper Seed is Northern Grown and Very Productive.



California Wonder

Windsor A—A new Pepper of unusual merit. A remarkable new Pepper developed by Dr. Curtis of the Connecticut Experimental Station with the shape and size of Ruby King, plus the thick walls of the California Wonder and a lighter and more attractive green in color. The yield is truly enormous, and although not the earliest Pepper grown, it will over a short period outyield any other variety. Our seed is grown only from the Station stock.

California Wonder—Largest of All. Mammoth fruits sometimes weighing a pound with very thick, meaty walls. Unusually solid and heavy, regular in shape, uniform in size and very high yielding. Our strain is very refined.

Hart's Nutmeg State—Early, heavy yields. Immense size, earliness and heavy yields characterize this

popular variety. It gives enormous yields of fine dark green fruits even in short seasoned localities and we recommend it to your attention.

Large Ruby King Selected—Plants early, hardy and productive with thick, tapering, bright ruby-red fruits. This old favorite is still one of the most profitable varieties. Our strain is very carefully selected.

All Peppers 10¢ per packet.

	Oz.	1/4 lb.	1 lb.
Windsor A —The heaviest yielder.....	\$1.00	\$3.50	\$12.00
California Wonder —The largest Pepper.....	.50	1.50	5.00
Hart's Nutmeg State —Early and prolific.....	.75	2.25	8.00
Large Ruby King Selected —The old favorite.....	.35	1.25	4.50
Harris Early Giant —Heavy bearing, early, square and blocky. Very desirable. Our stock is the finest available.....	.50	1.50	5.00
Sweet Squash —(Cheese or Tomato, Sunnybrook.) Very thick flesh, mild and sweet. Our strain is highly productive.....	.50	1.50	5.00
Hot Squash —We offer a warranted strain of true Hot Pepper.....	.50	1.50	5.00
Worldbeater —A large, thick fleshed Pepper which is enormously productive. Midseason in maturity.....	.30	1.00	3.50
Neapolitan —Early and productive. Sweet and mild.....	.35	1.25	4.00
Long Thick Red Cayenne —A giant type of this favorite Hot Pepper.....	.35	1.25	4.00
Large Red Cherry —We offer a special large strain of this desirable hot pungent variety.....	.35	1.25	4.00
Hot Bull Nose —The only large fruited Hot Pepper known. Our strain will run over 90% hot.....	.40	1.45	4.50
Sweet Bull Nose —A standard early pickling variety.....	.35	1.25	4.00
Sweet Mountain —A trifle longer than Bull Nose, sweet and mild.....	.35	1.25	4.00

RADIS

RADISH

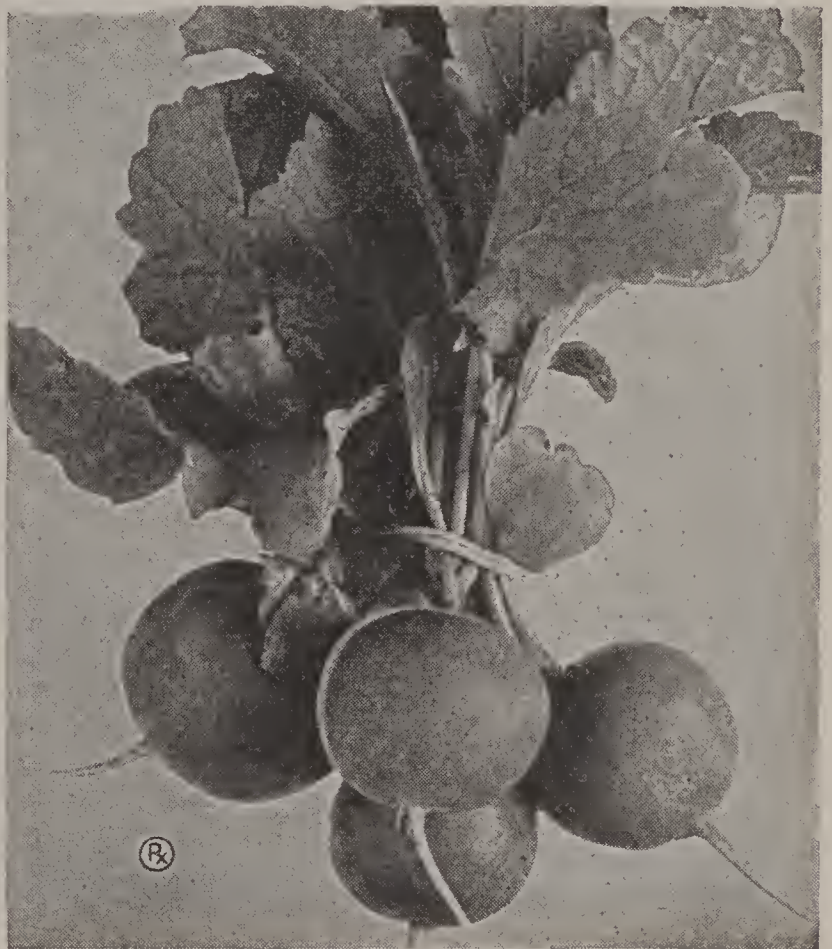
RAVANELLO

1 ounce to 100 feet of drill.

Glowing Ball—Most attractive Radish grown. Bright, fiery, scarlet-red with a suffusion of orange, this Radish presents the most eye-filling appearance imaginable. It is a perfect round shape, with a small top and a thread-like tap root. Bunches of these handsome roots sell on sight.

Early Scarlet Globe—Special selection. Our strain of this superfine variety is from transplanted roots only and is a true olive-shape with a beautiful bright scarlet color, small-topped, early and uniform. Our seed is strong and rapid growing.

Saxa Improved—Still the finest forcing Radish being one of the slowest to run to seed and possessing the smallest top of any Radish grown.



Saxa Radish

Radish Seed 10¢ per ounce; 25¢ per 1/4 lb.

	1 lb.	10 lbs.	100 lbs.
Glowing Ball —Most unusual and attractive color.....	\$0.75	\$7.00	\$60.00
Early Scarlet Globe Special —A super-fine selection.....	.65	6.00	50.00
Saxa Improved —Best for forcing.....	.70	6.50	60.00
French Breakfast —Half long Scarlet, white tipped.....	.65	6.00	50.00
White Tipped Scarlet or Sparkler —Round, scarlet with a white tip. Best forcing strain.....	.65	6.00	50.00
White Icicle —Short tops, smooth, clear white mild-flavored roots. Splendid for forcing.....	.65	6.00	50.00
Round Black Spanish —Round, deep black, turnip-shaped roots for winter storage.....	.80	7.00	
Giant White Stuttgart —Top shaped root, very large.....	.85	8.00	
White Straburg —Long, thick roots.....	.85	8.00	

Rhubarbe

RHUBARB

Rabarbaro

	Pkt.	1 oz.	1/4 lb.	1 lb.
Myatt's Victoria—Early larger ruby red stalks.....	\$0.10	\$0.15	\$0.45	\$1.50

Salsifis

SALSIFY

Sassefrica

	1 ounce to 100 feet of row.	Pkt.	1 oz.	1/4 lb.	1 lb.
Mammoth Sandwich Island—A large improved variety.....		\$0.10	\$0.20	\$0.50	\$1.75

Oseille

SORREL

Acetosa

	10¢ per packet.		Oz.	1/4 lb.	1 lb.
Narrow Leaved French—A very superior and desirable strain.....		\$0.25	\$0.85	\$2.75	
Broad Leaved—The standard variety.....		.15	.45	1.50	

EPINARD

SPINACH

SPINACE

1 ounce to 100 feet of drill;
10 to 12 pounds per acre.



Old Dominion Spinach

Blight Resistant Savoy—True Strain. We at last offer a Blight Resistant strain which is fully as curled and crumpled as Reselected Savoy and will stand as well as Old Dominion. Hitherto, most strains have contained a high percentage of "smooth" leaves. Ours is practically 100% Savoy.

All Spinach 10¢ per ounce; 15¢ per 1/4 lb.; 30¢ per lb.

	5 lbs.	10 lbs.	100 lbs.	500 lbs.
Special Summer Savoy —Best for late spring sowing.....	\$1.00	\$1.85	\$17.00	\$80.00
Winter Giant —Best smooth leaf for late fall.....	1.10	1.95	17.50	85.00
Aristocrat —Deepest green and most densely crumpled Savoy	1.20	2.10	19.00	90.00
Blight Resistant Savoy —100% Savoy type and highly resistant	1.00	1.85	17.00	80.00
Early Reselected Savoy —Very early and of fine color. Our strain is extremely well bred with a high percentage of female plants.....	.95	1.65	15.00	70.00
Long Standing Savoy —Best for spring sowing. A trifle later than reselected, but with higher non-bolting qualities. We have a very high class strain.....	.95	1.75	16.00	75.00
Old Dominion —Most highly resistant. Thick, bluish-green leaves which stand for an extremely long time before seeding. Excellent for fall sowing.....	1.00	1.85	17.00	80.00
King of Denmark —Large, round, somewhat blistered leaves which remain in good condition a week after any other variety.....	.95	1.65	15.00	70.00
New Zealand —Not a true Spinach, for the leaves may be picked and they will grow out again.....	\$0.10	\$0.20	\$0.50	\$4.25

Special Summer Savoy—Very dark green and long standing. An extraordinary strain of very deep green Savoy, 3 to 4 days longer standing than any other type which grows remarkably even. For growers who cut during July and August this is outstanding. For the most discriminating grower.

Winter Giant—For Late Fall. A smooth, extremely large leaved Spinach which does not bolt quickly and is at the head of the smooth-leaved list. Originator's stock.

Aristocrat (Number 5 Selection F)—The deepest green and most densely crumpled Savoy. This largest, deepest green and most densely crumpled Savoy type is extremely productive, yet will stand for a long time before bolting. The most attractive Spinach grown. We offer a true strain.

COURGE

SQUASH

ZUCCA

1 ounce to 15 or 20 hills; 3-4 pounds per acre.

Lemon Straightneck — A superlative strain. Over 95% true straight necks very thick and free from tapering. The color is a light creamy lemon-yellow and is entirely free from warts and disfigurements. This fine strain is very early and has been selected to meet every requirement of the most exacting gardener. A true money-maker.

Blue Hubbard — Favorite New England Strain. Our Blue Hubbard is the desirable slate-gray so highly prized in Massachusetts. The hard shell makes it the finest winter keeper of all winter Squashes. Our seed is grown in New England and is as pure a type as we have ever seen.



Blue Hubbard Squash

Warren's Turban—(Essex Hybrid.) Another New England strain of superlative quality. Very early warted fruits with rich orange flesh of the highest quality. Folks who have never tried this fine Squash should ask the opinion of residents of the "North Shore" about it.

All Squash 10¢ per packet; 15¢ per ounce.

WINTER SQUASH

	1/4 lb.	1 lb.	10 lbs.
Blue Hubbard —A very fine selection.....	\$0.45	\$1.60	\$14.50
Warren's Turban —Exceptionally fine flavor.....	.60	2.25	21.00
True Hubbard —Deep green, smooth skin of high quality. We have a very pure strain of this popular variety.....	.35	1.10	9.50
Improved Warted Hubbard —Larger than True Hubbard with a very knotted warty skin.....	.35	1.10	9.50
Golden Hubbard —Sometimes known as Red. We have an excellent strain40	1.25	11.00
Table Queen —(Des Moines or Acorn.) Small dark green acorn shaped fruit which are rapidly growing in popularity.....	.40	1.25	11.00

SUMMER SQUASH

	1/4 lb.	1 lb.	10 lbs.
Lemon Straightneck —A superlative strain.....	\$0.45	\$1.50	\$13.50
Giant Summer Crookneck —The popular old time favorite.....	.35	1.10	9.50
White Bush Scallop —Flattened and scalloped fruits. Delicious if picked when young and tender.....	.35	1.10	9.50
Italian Vegetable Marrow—(Cocozelle.) Long, mottled dark green fruits of surpassing flavor. We have an excellent strain of this popular variety.....	.40	1.35	12.00

Poiree

SWISS CHARD OR SPINACH BEET

Bieta

	Pkt.	Oz.	1/4 lb.	1 lb.	10 lbs.
Large White Ribbed —Dark green, well blistered leaves with broad, white midribs.....	\$0.10	\$0.15	\$0.30	\$0.90	\$8.25
Lucullus —Large midribs and light yellowish-green leaves10	.15	.30	.90	8.25

POMME D'ARMOUR

TOMATO

POMO D'ORO

1 ounce to 2000 plants.



Hart's Improved Stone Tomato

New Rutgers—Unusually large and solid. An exceptional variety developed by the New Jersey Experiment Station, being notable for its large size and solid structure, perfect globe shape, splendid flavor and deep red color throughout. It ripens about the same time as Marglobe and produces a tremendous amount of fruit. The vine is heavy with large leaves which protect it from sun scald. We offer originator's strain.

The Pritchard or Scarlet Topper—The deep globe shape and early ripening period of this fine variety coupled with its freedom from cracking, solid structure and brilliant red color make it one of the most desirable ever introduced.

Special Bonny Best—For those who demand a superstrain of this popular early variety we offer this strain of seed from crown set fruit only. Seed is saved only from those plants which show the greatest vigor and earliness. This means seed of pure parentage, high germination and vigorous growth.

Extra Marglobe—This superior strain produces enormous yields of perfect shaped, large, fancy fruits, earlier than any other strain of ordinary Marglobe.

All Tomato Seed 10¢ per packet.

	Oz.	1/4 lb.	1 lb.
New Rutgers —Tremendous yielding main cropper.....	\$0.60	\$2.00	\$7.00
The Pritchard or Scarlet Topper —Very valuable second early.....	.50	1.75	6.00
Special Bonny Best —For those who want the best.....	.70	2.25	8.00
Extra Marglobe —An enormous cropper.....	.35	1.20	4.00
Break O'Day —A resistant variety as early as Earliana and very similar to Marglobe in shape, color and size.....	.35	1.25	4.50
Earliana —Our strain produces large, solid, bright scarlet fruits with a thick skin and a pronounced freedom from cracking.....	.45	1.50	5.00
Hart's Improved Stone —Smooth, solid, firm fruit and an enormous yielder. Our strain is firm and solid with thick, meaty flesh.....	.25	.85	3.00
Ponderosa —Immense, heavy fruit often weighing 2 pounds or more with a beautiful light pink skin.....	.45	1.60	5.50
Oxheart —The largest Tomato. The shape is like an "oxheart" and the flesh is heavy and solid with extremely small seed cavities.....	.60	2.00	7.00
Dwarf Champion —An early pink fruited variety on dwarf vines.....	.35	1.25	4.25
Dwarf Stone —Similar to the above but with fruits of the Stone type.....	.40	1.35	4.50
Golden Queen —Large, smooth, non-acid, yellow fruit.....	.45	1.40	4.75

SMALL FRUITED

Red Plum, Yellow Plum, Red Pear, Yellow Pear, Strawberry, Red Currant.

Pkg. 10¢; 1/2 oz. 40¢; 1 oz. 75¢; 1/4 lb. \$2.50.

HERBS FOR FLAVORING

	Pkt	Oz.	¼ lb.		Pkt.	Oz.	¼ lb.
Anise	\$0.10	\$0.20	\$0.60	Lavender	\$0.10	\$0.30	\$0.75
Balm	.10	.50	1.50	Marjoram Sweet..	.10	.40	1.25
Basil	.10	.15	.50	Peppermint25		
Basilicone	.10	.15	.50	Rosemary10	.65	
Borage	.10	.15	.35	Rue10	.45	
Catnip	.15	.70		Sage10	.25	.75
Caraway	.10	.15	.30	Spearmint25		
Chervil	.10	.15	.45	Summer Savory....	.10	.20	.50
Chives	.15	.50	1.50	Thyme10	.40	1.25
Coriander	.10	.15	.25	Wormwood10	.40	1.25
Horehound	.10	.35					

TURNIP

Reselected Red Top Globe—Our special stock of this favorite Turnip continues in popularity due to its uniform, smooth, handsome roots with their bright purplish tops extending well down on the roots. Naturally, they sell more readily on the market and always command better prices than ordinary Turnips.

All Turnips 10¢ per oz.; 25¢ per ¼ lb.

	1lb.	10 lbs.
Reselected Red Top Globe — One of the handsomest Turnips grown	\$0.70	\$6.50
Yellow Globe — Round, smooth, yellow, fine- grained Turnip60	5.50
Purple Top Milan —An ex- tremely high-class extra early Purple Top flat Turnip	.75	7.00
Early White Milan —Same as the above but all white. We have a superior strain	.75	7.00
Purple Top Strap Leaf —A large, flat, white with a purple top. Quick growing	.60	5.50
White Egg —A pure white globe shape of high quality	.65	6.00
Early Snowball —A pure white early round Turnip of high quality65	6.00



Reselected Red Top Globe Turnip

RUTA BAGAS

	Oz.	¼ lb.	1 lb.	10 lbs.
Long Island Improved Neckless —(Improved Purple Top Yellow.) For many years one of our specialties and very popular with our customers. The large handsome roots are entirely free from neck and have a fine round shape with a rich yellow color and a sweet and mild flavor. Our Ruta Bagas always command higher prices.....	\$0.10	\$0.30	\$0.85	\$8.00
Macomber —The quality Ruta Baga. The finest white fleshed Ruta Baga on the market. Our strain was originally obtained in Eastern Massachusetts where this exceptionally sweet and mild variety was first intro- duced. The roots are a purple-white, nearly round and very smooth and we consider it the most refined type of Ruta Baga ever offered.....	.10	.45	1.50	13.50

FIELD AND FARM SEEDS AND GRASSES

In buying grass seeds from us you may be sure that you will receive seeds of the highest possible analysis.

Owing to variations in market values on grass seeds we are not always able, at the time this catalog is printed, to make fixed prices, but we will guarantee that our prices will, at all times, be as low as the market permits. We will be glad, however, to quote prices at any time on any quantity, and invite your correspondence.

FORAGE CROPS

Variety	Rate Per	Weight	Per	Bu.	10 Bu.
	Acre	Per Bu.	Lb.	Per Lb.	Per Lb.
Hungarian Millet	1 bu.	48 lbs.	.08	.07	.06½
Japanese or Barnyard Millet...	1 bu.	32 lbs.	.06	.05½	.05
Golden or German Millet.....	1 bu.	50 lbs.	.08	.07	.06
Sudan Grass	25 lbs.		.09	.08 Per 10 lbs.	.07 Per 50 lbs.
Rape, Dwarf Essex.....	10 lbs.		.15	.12 Per 10 lbs.	.11 Per 50 lbs.
Sunflower12	.11 Per 10 lbs.	.10 Per 50 lbs.

GRAIN SEEDS

	Rate Per	Weight	Bag 2½ Bu.		10 Bu.
			Per Bu.	Per Bu.	Per Bu.
Barley Oderbrucker	2 bu.	48 lbs.	2.35	2.25	2.15
Buckwheat Japanese	1 bu.	48 lbs.	2.25	2.10	2.00
Rye, Winter or Rosen.....	1½-2 bu.	56 lbs.	2.00	1.85	1.75
Spring Rye	1½-2 bu.	56 lbs.	3.00	2.85	2.75
Spring Wheat, Marquis.....	2 bu.	60 lbs.	3.10	3.00	2.85

SEED OATS

(Standard Weight 32 Lbs. Per Bu.)

	Rate Per	Weight	Per Bu.	Per Bu.	Per Bu.
Swedish Type	1½ bu.	46 lbs.	1.50	1.30	1.20
Common	1½ bu.	42 lbs.	1.10	.95	.90

HAY AND PASTURE GRASSES

	Rate Per	Weight	Lb.	Bu.	100 Lbs.
Timothy	25 lbs.	45 lbs.	.08	3.15	6.50
Red Top	20 lbs.	35 lbs.	.18	5.95	16.00
Orchard Grass	20-25 lbs.	14 lbs.	.22	2.75	19.00
Kentucky Blue Grass.....	40 lbs.	21 lbs.	.20	4.00	18.00

CLOVERS

	Rate Per	Weight	Per Bu.	Per Bu.	Per Bu.
White Dutch	25 lbs.	60 lbs.	.50	27.00	42.00
Medium Red (Domestic).....	20 lbs.	60 lbs.	.52	30.00	48.00
Alsike	20 lbs.	60 lbs.	.45	26.50	42.00
White Sweet Blossom.....	30 lbs.	60 lbs.	.20	11.00	17.00
Crimson	10 lbs.	60 lbs.	.18	10.00	16.00
Ladino (Scarified)	5 lbs.	60 lbs.	1.40	70.00	

ALFALFA

	Rate Per	Weight	Per Bu.	Per Bu.	Per Bu.
Certified Grimm (Blue Tag)....	25 lbs.	60 lbs.	.56	32.50	52.00
Affidavit Grimm (Idaho).....			.52	30.00	48.00

OTHER LEGUMES

	Rate Per	Weight	Bag 2½ Bu.		10 Bu.
			Per Bu.	Per Bu.	Per Bu.
Soy or Soja Beans.....	1½ bu.	60 lbs.	2.75	2.50	2.40
Cow Peas	1½ bu.	60 lbs.	3.50	3.40	3.25
Canada Field Peas.....	2 bu.	60 lbs.	4.50	4.20	3.85
Hairy Vetch	25 lbs.	60 lbs.	9.75	9.50	9.25
Spring Vetch	40 lbs.	60 lbs.	7.50	6.75	6.60

FIELD CORN

14-16 lbs. per acre.

	Bu.	2 bu. Bag	10 bu.
Longfellow —Long ears with 8 rows of hard yellow kernels. Early and tall growing.....	\$3.00	\$5.70	\$27.50
Early Yellow Canada —(90 Day Yellow.) The most popular Field Corn	3.00	5.70	27.50
Luce's Favorite —Late variety with huge broad kernels also used for ensilage	3.00	5.70	27.50
Sanford White Flint —Resembles Yellow Canada in everything but color	3.25	6.20	31.00
Smoky Dent —(Early August.) Extremely hardy, early and prolific. Red kernels tipped with white.....	3.25	6.20	31.00

ENSILAGE CORN

Hart's Hybrid Sweepstakes—A splendid new Hybrid combining the mammoth growth of the largest Ensilage Corn with the early maturity and large grain yield of Sweepstakes. Wonderful for silage or husking, it produces immense ears with large, deep, reddish kernels on fodder over 14 feet high and will produce more dry matter of a higher protein content than any other variety.

	Bu.	2 bu. Bag	10 bu.
Hart's Hybrid Sweepstakes —The finest of all.....	\$6.25	\$12.00	\$55.00
Improved Leaming —Early and large eared. Sure to ripen.....	2.50	4.80	22.50
Lancaster County Sure Crop —Tall ensilage with large ears. Early ripening and high in protein matter.....	2.75	5.20	25.00
Yellow Sweepstakes —Huge ears ripening very early. Rich yellow	3.00	5.75	27.50
Sweepstakes (West Branch) —A true strain of the highest quality. Large red kernels.....	3.00	5.75	27.50
Eureka (Virginia grown Pamunkey Strain) —The largest and heaviest Ensilage known. We offer a superlative strain.....	3.00	5.75	27.50
Connecticut Ensilage —Tremendous ears with very broad, deep kernels of golden yellow on high, rapid growing stalks. Very fine	3.25	6.25	30.00



STANLEY'S CROW REPELLENT

The Standard for over 20 years

Protect your seed corn during the period when it is most easily damaged by ridding your crop of crows and other corn-pulling birds and animals. It saves loss of seed and labor of replanting. It positively will not clog any planter. It is non-poisonous and will not injure the seed or any kind of corn. It is more effective, more convenient to use, and more economical than any other material.

1 Qt. Enough for 4 bushels of seed.....	\$1.75
1 Pt. Enough for 2 bushels of seed.....	1.00
1/2 Pt. Enough for 1 bushel of seed.....	.60

HART'S FLOWER SEEDS

If you grow plants or cut flowers for profit or if you grow flowers only for pleasure, you will find our strains the most satisfactory you can use. Our flower seed is, in every case, grown for us by specialists and has been pre-tested for germination and vitality. We send out nothing until we are fully confident it will give the desired results.

Remember — You cannot grow good crops from poor seeds.

(1/4 lb. sold at three times the ounce rate.)



Aster—American Branching Aster—California Giant

WILT RESISTANT ASTERS

EASY TO GROW AND SURE TO PLEASE.

QUEEN OF THE MARKET

The standard early variety. Very free flowering.

Deep Rose	Light Blue	}	Pkt.	10c
Crimson	Flesh Pink		1/4 oz.	30c
Dark Blue	White		1 oz.	1.00

Mixed—Pkt. 10c; 1/4 oz. 25c; oz. 90c.

IMPROVED GIANT CREGO

Large double flowers with long ribbon-like petals, gracefully curled and crested.

White	Deep Rose	}	Pkg.	10c
Crimson	Shell Pink		1/4 oz.	45c
Dark Blue	Peach Blossom		1 oz.	1.50
Lavender				

Mixed—Pkt. 10c; 1/4 oz. 35c; 1 oz. 1.25.

EARLY BEAUTY

Huge blossoms of curved and twisted petals on vigorous growing plants.

Azure	Purple	}	Pkt.	10c
Crimson	Shell Pink		1/4 oz.	35c
Deep Rose	White		1 oz.	1.25

Mixed—Pkt. 10c; 1/4 oz. 30c; 1 oz. 1.00.

AMERICAN BRANCHING

Huge blossoms of solid paeony-like flowers. The standard Aster.

Azure	Peerless Pink	}	Pkt.	10c
Shell Pink	White		1/4 oz.	30c
Coppery Rose	Purple		1 oz.	90c
Light Rose	Red			

Mixed—Pkt. 10c; 1/4 oz. 25c; 1 oz. 90c.

HEART OF FRANCE

A rich, glowing ruby red. Most brilliant. Pkt. 15c; 1/4 oz. 60c; 1 oz. 2.00.

NON-WILT RESISTANT

EXTRA EARLY EXPRESS

The earliest Aster grown. Pkt. 15c; 1/4 oz. 75c; 1 oz. 2.50.

AURORA

An outer band of petals with an inner quilled crest of a contrasting color.

Pkt. 10c; 1/4 oz. 60c; 1 oz. 2.25.

PAEONY FLOWERED OR GIANT MAMMOTH

Azure	Silvery Rose	}	Pkt.	10c
Flesh Pink	Purple		1/4 oz.	65c
Peach	White		1 oz.	2.25
Deep Rose				

Mixed—Pkt. 10c; 1/4 oz. 60c; 1 oz. 2.00.

CALIFORNIA GIANTS

Colossal flowers with long twisted petals. Most attractive.

Light Blue	Apple Blossom	}	Pkt.	10c
Dark Purple	Peach Blossom		1/4 oz.	75c
Deep Rose	White		1 oz.	2.75

Mixed—Pkt. 10c; 1/4 oz. 65c; 1 oz. 2.25.

IMPROVED CALIFORNIA SUNSHINE

Large single flowers with quilled centers of a contrasting color.

Pkt. 10c; 1/4 oz. 75c; 1 oz. 1.25.

SUPER GIANT

A new race of gigantic Asters, exquisite in shape and majestic in appearance.

El Monte—A rich glowing crimson.

Los Angeles—Lovely clear, shell pink.

Pkt. 15c; 1/4 oz. 1.25; 1 oz. 4.00.

AGERATUM

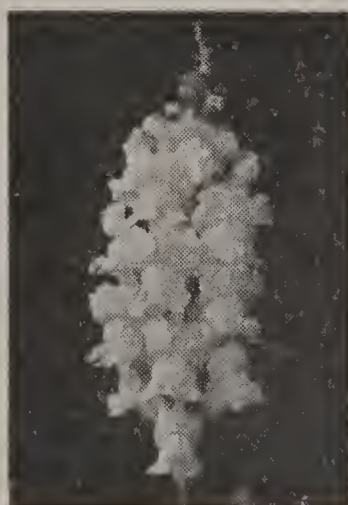
Heads of feathery blue flowers.

	Pkt.	1/4 oz.	1 oz.
Semi-Dwarf Blue —18 inches10	.15	.50
Balls Blue —6 inches10	.20	.65
Imperial Dwarf Blue —8 inches .10	.15	.50	

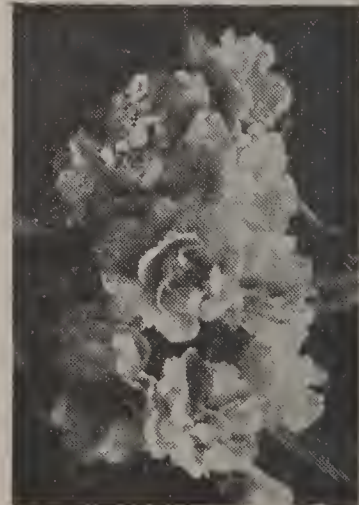
ALYSSUM

Dense growing plants completely covered with tiny flowers.

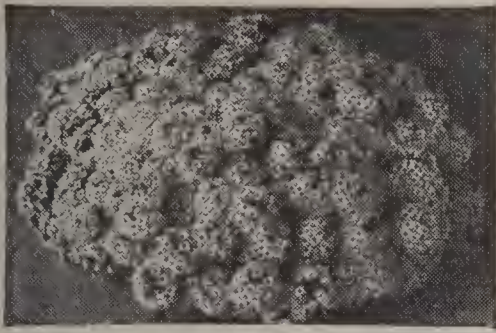
Little Gem —8 inches10	.15	.25
Procumbens —5 inches. Mass of snow-white flowers10	.15	.25



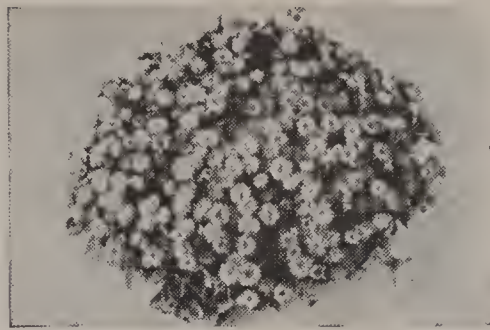
Snapdragon



Balsam



Alyssum



Ageratum



Celosia

ANTIRRHINUM (Snapdragon)

Long gorgeous spikes of color.

	Pkt.	1/4 oz.	1 oz.
Giant Flowered			
Gold	} Scarlet White	.15	.35
Deep Rose			
Light Rose			
Mixed	.10	.25	.85
New Giant Rust Proof—The ideal			
Snapdragon	.20	.45	1.60

ARCTOTIS

Daisy-like flowers.

Grandis—Lilac Blue	.10	.20	.60
Hybrids—Brilliant red and orange shades	.20	.45	1.50

BALSAM

Brilliant double flowers on stout stems.

Camelia Flowered	.10	.20	.50
-------------------------	-----	-----	-----

CALLIOPSIS

Curiously marked with dark colors.

Dwarf	.10	.15	.45
Tall	.10	.15	.45

CALENDULA

Long flowering, bright and cheery.

Balls Orange	.10	.20	.60
Orange King	.10	.15	.45
Chrysantha (Sunshine)	.10	.15	.45
Lemon Queen	.10	.15	.45
Radio—Quilled Petals	.10	.15	.45
Campfire—Crimson Sheen	.10	.20	.60
Orange Shaggy—A delightful new type	.10	.15	.45
Pastel Shades—Light delicate tones	.10	.15	.40
Florist Colors—A very brilliant mixture	.10	.15	.40

CANDYTUFT

Clusters of tiny bright flowers.

Hybrids Mixed	.10	.20	.60
Giant Hyacinth Flowered White	.10	.15	.50

CARNATION

Chabauds Giant	.10	.60	2.25
-----------------------	-----	-----	------

CENTUREA

(Bachelor's Button)

Double			
Blue	} Pink Red	.10	.20
White			
Jubilee Gem—Immense bright blue flowers. Dwarf Plants....	.20	.60	2.00
Mixed	.10	.20	.60
Imperialis (Sweet Sultan)—Love-ly quilled thistlelike flowers	.10	.20	.60

CELOSIA CRISTATA

(Crested Cockscomb)

Dwarf Mixed	.10	.40	1.40
Tall Mixed	.10	.35	1.20
Glasgow Prize—Large Dark Crimson Combs	.15	.60	2.00

CELOSIA PLUMOSA

(Plumed Cockscomb)

	Pkt.	1/4 oz.	1 oz.
Pride of Castle Gould—Fine feathered heads in striking bright colors. Immense size....	.15	.45	1.50
Mixed—All Shapes and Colors..	.10	.35	1.10

CELOSIA CHILDSII

(Chinese Wool Flower)

Mixed—Huge balls of brilliant wool-like Substance	.10	.30	1.00
--	-----	-----	------

CHRYSANTHEMUM

Mixed	.10	.15	.50
--------------	-----	-----	-----

CLARKIA

Mixed—Almond-like flowers	.10	.15	.50
----------------------------------	-----	-----	-----

COSMOS

Sensation—Tremendous flowers 4 to 5 inches across and early flowering	.15	.75	2.50
Early Flowering—Dwarf plants with a myriad of blossoms....	.10	.15	.40
Double Crested—A crown or anemone-like crest with large outer petals	.10	.80	2.75
Klondike Orange Flare—a vivid orange with rich deep Green foliage, flowering until frost....	.10	.45	1.50

CORN

(Ornamental)

Squaw or Indian—Vari-colored ears which are valuable for winter decoration	—	—	.10
Rainbow—Many colored leaves for garden decoration	—	—	.10

DAHLIA

Double Named Varieties	.10	.40	1.25
Cactus Flowered	.20	.60	2.00
Coltress Mignon—Great profusion of bright single flowers	.10	.45	1.50
Unwin's Dwarf Giants—Semi-double flowers in a wide range of colors	.15	.50	1.75

DIANTHUS

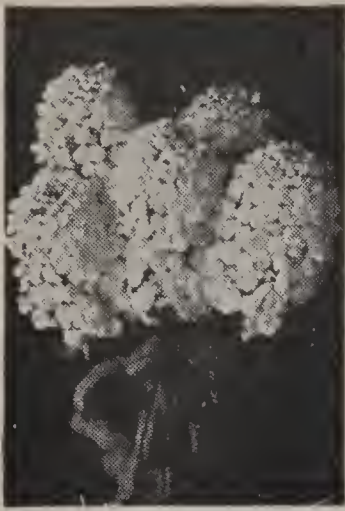
(Pinks)

Diadem (Hartweggi Single)—Immense Florets	.10	.20	.60
Royal (Hartweggi Double)—Wide variety of colors and markings	.10	.20	.60
Chinese Double—largest of annual pinks	.10	.20	.60
Madam Butterfly—extremely elongated petals, 5 or 6 inches long in a variety of colors of an unusual exotic appearance	.25	.90	—
Splendens—Bright crimson large white eye	.10	.25	.90

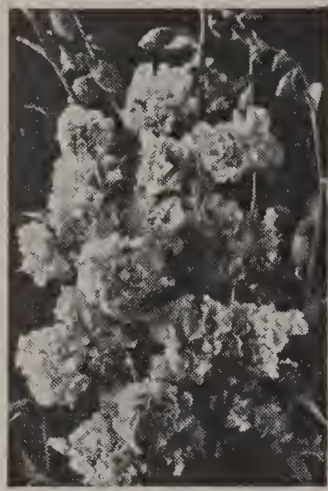
DIDISCUS

(Blue Lace Flower)

Coruleus—Light blue umbrellas....	.10	.20	.60
--	-----	-----	-----



Candytuft



Clarkia

DIMORPHOTHECA

(African Daisy)

	Pkt.	1/4 oz.	1 oz.
Glossy orange-gold flowers zoned with black10	.40	1.40

ESCHSCHOLTZIA

(California Poppy)

Brilliant Mixed—Crimson, Pink and Orange—scarlet tones....	.10	.15	.50
--	-----	-----	-----

EUPHORBIA

(Snow on the Mountain)

Variegata—Striped Green and white leaves10	.15	.45
Heterophylla10	.25	.90

GAILLARDIA

(Blanket Flower)

Picta Single10	.15	.45
Lorenziana Double10	.15	.45

GODETIA

Schamini—Neat globular flowers in glistening colors10	.20	.60
---	-----	-----	-----

GYPSOPHILA

(Baby's Breath)

Alba (Covent Garden Strain)....	.10	.15	.45
---------------------------------	-----	-----	-----

KOCHIA

(Mexican Fire Bush)

Tricophylla — Pyramidal evergreen-like plants turning to a fiery red in the autumn10	.15	.45
--	-----	-----	-----

LARKSPUR

Shell Pink	Lilac	}	.10	.25	.90
Blue	White				
Rose	Bright Pink	}			
Mixed10	.20	.60

LOBELIA

Crystal Palace Compacta—Deep blue with dark foliage10	.20	.60
---	-----	-----	-----

LUPIN

Giant King—Improved type with huge spikes 3 to 4 feet tall	.10	.25	.80
--	-----	-----	-----

MARVEL OF PERU

(Four O'Clocks)

Mixed — Bushy hedge plants completely covered with bright trumpet-like blossoms	.10	.15	.45
---	-----	-----	-----

MARIGOLD

The Unrivalled garden flower.

AFRICAN TYPES

Tall orange or lemon10	.20	.60
Mixed10	.15	.50

	Pkt.	1/4 oz.	1 oz.
Dwarf orange or lemon10	.20	.60
Mixed10	.15	.50

FRENCH TYPES

Double

French Dwarf (Monarch Strain) —Medium sized blossoms blotched with bright and vivid colors10	.20	.60
French Tall—Large curiously marked flowers10	.20	.60
Royal Scot—A charming combination of mahogany and gold in the tall type10	.20	.60

Single

French Dwarf—Lovely little varicolored blossoms10	.20	.60
---	-----	-----	-----

VARIOUS NEW TYPES

Guinea Gold—Semi-double fluffy flowers of brilliant orange suffused with gold10	.25	.90
Yellow Supreme — Dazzling lemon-yellow companion to the above10	.25	.90
Sunset Giants—Nearly 5 inches in diameter, sweet scented, fully double fluffy flowers in shades from deep orange to primrose. The Marigold supreme20	.60	2.00
Crown of Gold—Odorless foliage, orange flowers with crested centers and broad guard petals15	.35	1.25
Harmony—Dwarf golden yellow flowers bordered maroon red, scabious flowered10	.25	.90
California Sunshine Mixture — All new trial ground mixture of lovely shapes and shades20	.50	1.75
Chrysanthemum Flowered — Many new and distinct types in orange and yellow shades20	.75	2.50
Miniature—Compact little plants completely covered with tiny bright flowers. Fine for edging10	.30	1.00

MIGNONETTE

Machet (New York Market)10	.15	.45
--------------------------------	-----	-----	-----

NICOTIANA

(Flowering Tobacco)

Crimson Bedder—Brilliant Crimson15	.60	2.00
Affinis Hybrids — All Shades Mixed10	.20	.65

NIGELLA

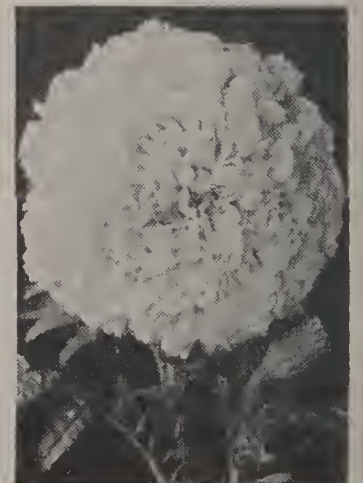
Miss Jekyll—Double Tender Blue Flowers10	.15	.50
--	-----	-----	-----

NASTURTIUMS

Tall Mixed	—	.10	.15
Dwarf Mixed	—	.10	.15



Marigold—Harmony



Marigold—Sunset Giants



Euphorbia



Marigold—Crown O'Gold

NASTURTIUMS — (Continued)

	Pkt.	1/4 oz.	1 oz.
Glorious Gleam Hybrids —Fully double, huge blossoms borne in great profusion			
Golden Gleam10	.15	.40
Orange Gleam			
Salmon Gleam			
Scarlet Gleam			
Mahogany Gleam			
Glorious Gleam Mixture10	.15	.40
Golden Globe —Extra Dwarf free flowering strain with bright golden double flowers10	.15	.40

PANSY

We have a high reputation for unusually large and fine blended colors of Pansy Seed. Write for prices on large quantities.

Bedding Mixture10	.25	.90
Roggli or Swiss Giants —Superb sized flowers in rich and dark shades25	1.00	3.50
Engelmann's Giants —The largest known Pansy in a wide color range25	1.75	6.00
Giant American Favorite —Remarkably bright colored large flowered strain20	1.50	5.00
Special Market —A splendid imported strain satisfactory for mass markets15	.80	2.75

PETUNIA

	Pkt.	1/8 oz.	1/4 oz.
Hybrida			
Best for beds or massing.			
Elk's Pride —Large flowered dark velvety purple20	3.50	6.00
Rosy Morn —Clear Pink with a broad white throat10	1.75	3.00
Snow Queen —Pure White.....	.10	.60	1.00
Howard Star —Maroon with a five-pointed white star.....			
Rose of Heaven —Carmine Pink, solid color			
Mixed —Wide variety of colors10	.50	.90

Balcony

Trailing type for window boxes.			
Red, Rose, Blue15	.90	1.60
Mixed10	.80	1.40

Nana Compacta Types

Dwarf compact plants completely covered with tiny flowers.			
Pink Gem —2 inches, flowers in shades of bright pink15	2.00	3.50
Martha Washington —The only dwarf compact plant with frilled or ruffled edges. Bright rosy pink flowers shading to dark violet on the throat25	6.00	—

GIANT FLOWERING TYPES

Giants of California —Immense blooms 6 inches across, tightly ruffled and crumpled, in light shades veined with contrasting colors25	7.00	—
---	-----	------	---

	Pkt.	1/8 oz.	1/4 oz.
Dwarf Ramona —A sturdy growing dwarf type, very fringed, with open throats25	12.00	—
Ruffled Monsters —Large ruffled flowers in desirable red and dark shades25	10.00	—
Maximum Double Fringed —Coming practically 100% double and semi-double with striking light colors50	—	—

PHLOX

	Pkt.	1/4 oz.	1 oz.
Drummondii —Dwarf10	.20	.70
Cuspidata —Star-shaped flowers in rich colors10	.20	.70
Gigantea Art Shades —Flowers 1 1/4 to 1 1/2 inches in diameter in delicate soft art tones15	.40	1.40

POPPY

Shirley Single10	.15	.50
Shirley Double10	.20	.60
Paeony Flowered —Immense double mops of color10	.20	.50
Flanders Field —Single bright red flowers10	.15	.45
American Legion —Large Dazzling orange-scarlet10	.20	.70

PORTULACA

Single Mixed10	.20	.60
Double Mixed —Resembles small bright roses10	.50	1.60

RICINUS

(Castor Oil Bean)

Tree-like plants with ornamental foliage.			
Gibsonii —Dark Red Leaves	—	.10	.15
Red Spire —Bronze Green foliage, rose crimson spires	—	.10	.15
Zanzibariensis —Tropical green leaves of huge size	—	.10	.15

SALPIGLOSSIS

(Painted Tongue)

Tubular, Petunia-like blossoms veined with bright gold.			
Empress10	.35	1.25

SCHIZANTHUS

Butterfly-like blooms in all colors.			
Wisetonensis —Bushy plants10	.20	.70

SALVIA

(Scarlet Sage)

Splendens Bonfire —Large spikes very free-blooming10	.35	1.25
America —Extremely uniform in growth and bloom15	.50	1.75

SCABIOSA

(Pincushion Flower)

New Giant Hybrids —Large massive blooms in new and old shades10	.20	.70
--	-----	-----	-----



Poppy—Paeony Flowered



Phlox—Art Shades

STOCKS

(Gilliflower) Pkt. 1/4 oz. 1 oz.

Dwarf Ten Weeks —Fine central spikes with many side shoots	.10	.20	.70
Improved Bismark —The aristocrat of stocks. Extremely high percentage of doubles	.15	.60	2.00
Beauty of Nice —Very early and long flowering	.15	.60	2.00

SUNFLOWER

Mammoth Russian — Gigantic heads on long spikes	—	—	.10
Dwarf Chrysanthemum Flowered —Fine edge petals, densely double	—	.10	.15

SWEET WIVELSFIELD

Resembles large flowering Sweet William in a

greater variety of coloring.	Pkt.	1/4 oz.	1 oz.
Mixed10	.50	1.75

TITHONIA

Gold flower of the Incas. Bold flowering annuals like huge French Marigolds on five foot plants.

Mixed20	.60	2.00
--------------------	-----	-----	------

VERBENA

Hybrida—Immense trusses, florets over one inch in diameter

	.10	.25	.90
--	-----	-----	-----

WALLFLOWER

Mixed—Spikes thickly set with flowers in rich reds and yellows

	.10	.20	.70
--	-----	-----	-----

SWEET PEAS

1 Ounce to 25 feet of row

Avalanche —White	Fortune —Deep Blue	Pinkie —Rose Pink
Blue Bird —Clear Blue	Gleneagles —Light Blue	Powerscourt —Lilac
Chieftain —Mauve	Grenadine —Geranium Red	Sunkist —Creamy Rose
Colorado —Bright Orange	Jack Hobbs —Scarlet Pink	What Joy —Clear Cream
Crimson King —Rich Crimson	Mary Pickford —Cream Pink	Youth —White with Pink

Pkt. 10c; 1/2 oz. 20c; 1 oz. 30c; 1/4 lb. 85c

Mixed—All Colors. Pkt. 10c; 1/2 oz. 15c; 1 oz. 20c; 1/4 lb. 60c; 1 lb. 2.00.

Fantasy Mixed—Mottled, fringed and picotee markings. Pkt. 10c; 1/2 oz. 20c; 1/4 lb. 80c; 1 lb. 2.50

Ruffled Mixed—Edges daintily waved and fringed. Pkt. 10c; 1/2 oz. 20c; 1/4 lb. 80c; 1 lb. 2.50

ZINNIAS

CALIFORNIA MAMMOTH

Monstrous flat typed flowers often growing 8 inches across.

	Pkt.	1/4 oz.	1 oz.
Enchantress —Light Rose	.10	.25	.75
Daffodil —Bright Yellow			
Orange King —Burnt Orange			
Violet Queen —Rich Violet			
Brightness —Bright Pink			
Purity —Pure White			
Scarlet Queen —Deep Scarlet			
Rose Queen —Deep Rose			
Mixed —Hand blend of all colors	.10	.20	.60

LILLIPUT

Small compact symmetrical flowers on dwarf plants.

Pastel Shades — Lovely light shades of apricot, peach, cream, shell pink, salmon, light rose and orchid. Wonderful cutting	.10	.25	.75
Scarlet Gem —(Red Riding Hood) —A bright scarlet	.10	.20	.70
Mixed —All colors in a well balanced blend	.10	.20	.60

TOM THUMB

Tiny blossoms in profusion on plants only six inches high

	.10	.35	1.25
--	-----	-----	------

SCABIOUS FLOWERED

A lovely new Zinnia type resembling Scabiosas

	Pkt.	1/4 oz.	1 oz.
	.10	.40	1.40
Autumn Tints — Burnt orange, deep russet, bronzy red shades. Wonderful for cut flowers	.15	.50	1.75

EARLY WONDER

A new race of dwarf, early flowering types with masses of even, double flowers on long, nearly leafless stems

	.10	.35	1.25
--	-----	-----	------

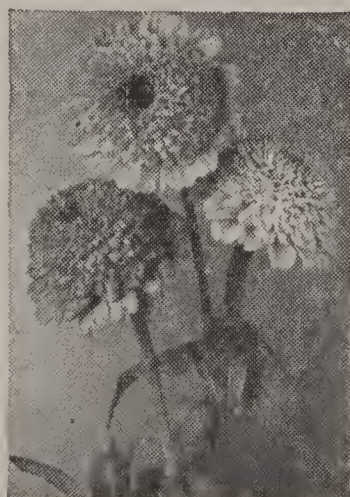
DAHLIA FLOWERED

Most graceful large Zinnia, conical petals give the appearance of depth.

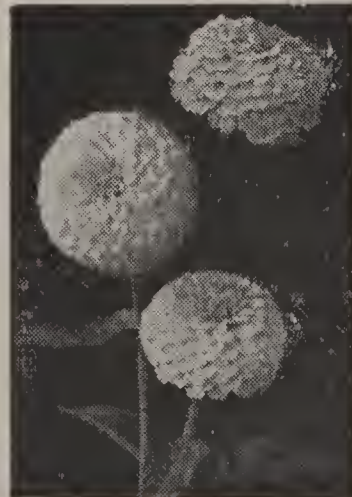
Exquisite —Light Rise	.10	.30	.90
Old Rose —Delicate Rose			
Golden State —Orange Yellow			
Scarlet Flame —Deep Scarlet			
Crimson Monarch —Large Red			
Lemon Beauty —Light Yellow			
Purple Prince —Rich Purple			
Polar Bear —Pure White			
Canary Bird —Primrose			
Oriole —Orange and Gold			
Meteor —Dark Red			
Dream —Rosy Lavender			
Mixed10	.25	.75



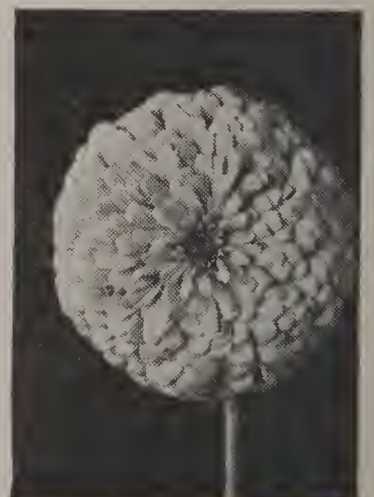
Zinnia—Linearis



Zinnia—Scabious Flowered



Zinnia—Lilliput



Zinnia—California Giants

FANTASY

Shaggy petaled medium-sized flowers. Excellent for cutting.

	Pkt.	1/4 oz.	1 oz.
Mixed10	.30	1.00

CROWN O'GOLD

The aristocrat of Zinnias. Each petal is overlaid with a deep golden yellow at the base10 .40 1.40

LINEARIS

The most unusual and interesting Zinnia. Single flowers of a lovely golden-orange with a delicate lemon yellow stripe through each petal with a dark brown center. Longest blooming of any flower known15 .50 1.75



Helichrysum



Morning Glory— Heavenly Blue

EVERLASTING

ACROCLINIUM

Daisy-like flowers. Bright rose with yellow centers10 .15 .50

GOMPHRENA (Globe Amaranth)

Clover-like heads. White, red, pink and orange10 .15 .50

HELICHRYSIUM

Best of everlastings. Bright and brilliant colors10 .20 .60

STATICE

Sinuata — Small panicles of flower clusters in delicate colors10 .15 .50

XERANTHEMUM

Silvery foliage and silky blossoms in pink, white and purple Pkt. 1/4 oz. 1 oz.
 .10 .15 .50

**LUNARIA (Honesty)
(St. Peter's Penny)**

Silvery flat seed pods for winter decorations10 .20 .70

CHINESE LANTERN (Physallis)

Bright red balloon-like husks.

EVERLASTING MIXTURE

All of the above and many others carefully blended10 .15 .45

CLIMBING VINES

BALLOON VINE

The seed pods are miniature light-green balloons10 .15 .50

CANARY BIRD FLOWER

Bright Yellow flowers resembling a canary in full flight .10 .15 .50

CARDINAL CLIMBER

Heavy leafage with bright scarlet flowers10 .20 .70

**COBOEA SCANDENS
(Cathedral Bells)**

Huge bell-shaped flowers in blue and white10 .20 .70

MORNING GLORY

Japanese Imperial — Gigantic flowers with exquisite markings and shadings — .10 .30

Heavenly Blue—Loveliest of all climbers. Blossoms 3 to 4 inches across. A rich deep glowing blue in color10 .25 .90

CYPRESS VINE

Scarlet and white star-shaped flowers10 .15 .45

KUDZU VINE

Dense shade and very rapid growing10 .20 .70

GOURDS

Small Decorative	}	.10	.15	.30
<i>Pear</i> —Striped Yellow and green				
<i>Spoon</i> —Ball shaped, long slender neck				
<i>Turks Turban</i> —Squash types, bright colored.....				
<i>Warted</i> —All Shapes.....				
Mixed10	.15	.30
Large Decorative				
Useful for dippers, bowls, bird-houses, etc.10	.15	.30

CLIMBING VINES MIXED

All varieties mixed10 .15 .45

NODOGEN INOCULATION

For Legume Crops. The cheapest and easiest way of improving crops and soil.

The Legume crops when not inoculated rob the soil; inoculated with the right bacteria, they feed the soil, grow more vigorously and contain a higher percentage of valuable feed proteins.

Nod-O-Gen Easiest and Surest Form of Inoculation

Nod-O-Gen is a scientific pure culture of root nodule bacteria, prepared on special food jelly in bottles with patent stoppers which permit the bacteria to live and breathe and maintain their vigor. Each culture contains plenty of bacteria to inoculate the quantity of seed marked on the bottle. The cost per acre is very small.

Moreover, Nod-O-Gen is easiest inoculation to use, requiring no equipment or experience. Takes only a few minutes. Complete directions on every bottle. Results are sure.

Prices for Nod-O-Gen

For Alfalfa, Sweet Clover, Red Clover and other Clovers (specify which):

1/2 bu. size	\$0.35
1 bu. size60

For Soy Beans, Cow Peas, Field Peas and Beans and Vetches (specify which):

1 bu. size	\$0.35
5 bu. size	1.00

For Garden Peas, Sweet Peas, Garden Beans and Limas:

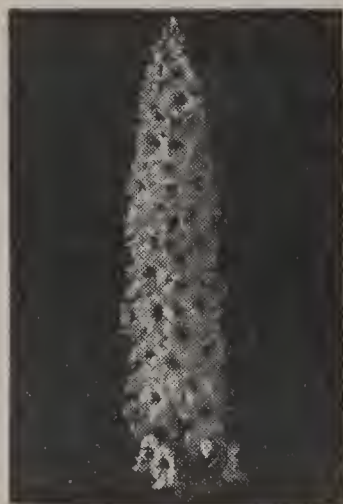
Garden size	\$0.20
-------------------	--------

Always specify names of crop as well as size of culture wanted.

PERENNIALS



Aquilegia



Delphinium

AGROSTEMMA (Rose of Heaven)

Bright red blossoms

	Pkt.	1/4 oz.	1 oz.
Coronaria10	.15	.50

ALYSSUM (Basket of Gold)

Saxatile—Masses of bright golden yellow flowers10	.20	.70
---	-----	-----	-----

ANCHUSA

Italica—Forget-me-not—Panicles of gentian blue10	.15	.50
--	-----	-----	-----

AQUILEGIA (Columbine)

Scott Elliott Hybrids—Tremendous long-spurred flowers in bright vivid colors20	.75	2.50
--	-----	-----	------

CHRYSANTHA (Silver Queen)

Pale yellow double flowers15	.90	3.00
--------------------------------	-----	-----	------

COERULEA (Rocky Mountain)

A delicate combination of deep blue and white15	.90	3.00
---	-----	-----	------

ARABIS (Rock Cress)

Alpina—Star-shaped white flowers, very early flowering10	.20	.70
--	-----	-----	-----

BELLIS PERENNIS (English Double Daisy)

Double daisy-like flowers, pink, red and white. Treated like pansies10	.30	1.00
--	-----	-----	------

CAMPANULA (Canterbury Bell)

Medium—			
Single—Bell-shaped10	.15	.50
Double—Densely Double10	.25	.90
Calycanthema—Cup and Saucer10	.30	1.00

CHRYSANTHEMUM (Shasta Daisy)

Leucanthemum—Huge white flowers with yellow centers....	.10	.45	1.50
---	-----	-----	------

COREOPSIS (Perennial Calliopsis)

Lanceolata—Rich golden yellow flowers10	.15	.50
---	-----	-----	-----

DIANTHUS—(Clove Pinks)

Plumarius—Old fashioned hardy garden flower10	.20	.70
---	-----	-----	-----

DIGITALIS (Foxglove)

Giant Shirley—Long spires with gay mottled and spotted bells10	.20	.70
--	-----	-----	-----

DELPHINIUM (Hardy Larkspur)

Tall spikes with double flowers in shades and tones of blue.

BELLADONNA

Light Blue15	.70	2.50
------------------	-----	-----	------

BELLAMOSUM

Dark Blue15	.60	2.00
-----------------	-----	-----	------

HOLLYHOCK STRAIN

	Pkt.	1/4 oz.	1 oz.
Large double flowers in various blue shades20	.90	3.00

DeLUXE HYBRIDS

Extra large double flowers in blue and pastel shades15	.80	2.75
--	-----	-----	------

GAILLARDIA (Blanket Flower)

Grandiflora—Shades of brilliant red and yellow10	.25	.90
--	-----	-----	-----

GYPSOPHILA (Baby's Breath)

Paniculata—Miniature balls of white petals10	.15	.50
--	-----	-----	-----

HIBISCUS (Mallow)

Gigantic Hollyhock-like flowers in pink, rose, white and crimson10	.20	.70
--	-----	-----	-----

HOLLYHOCK

Single—Wide color range10	.20	.70
Double—Deeply Curled10	.35	1.25
Triumph—Gigantic crested blooms 4 to 5 inches across....	.15	.70	2.50

LATHYRUS (Perennial Pea)

Latifolius—Decorative climber with Pea-shaped blossoms10	.20	.70
--	-----	-----	-----

LINUM (Flax)

Perrene—Dainty light-blue flowers10	.15	.50
---	-----	-----	-----

LUPINE

Stately spikes of close packed blossoms.			
Polyphyllus—Showy Mixture10	.15	.50

MYOSOTIS (Forget-me-not)

Sprays of small delicate bright blue flowers.			
Palustris—True swamp type10	.35	1.10

POPPY

Oriental—Large showy orange-scarlet blossoms10	.40	1.50
Iceland—Medium sized. Brightly colored flowers15	.50	1.75

PENSTEMON (Bearded Tongue)

Sensation—Long flower spikes of bright color masses10	.70	2.25
---	-----	-----	------

PYRETHRUM (Painted Daisy)

Single—Bright Daisy-like flowers10	.25	.90
--	-----	-----	-----

SCABIOSA (Pincushion Flower)

Caucasica—Light blue and white semi-double daisy-like flowers15	.70	2.25
---	-----	-----	------

STOKESIA (Cornflower Aster)

Cyanea—Giant Cornflowers in rich Blue and White15	.45	1.50
---	-----	-----	------

VIOLA

Tiny pansy-like flowers.			
Cornuta—Rich variety of colors15	.50	1.75

SWEET WILLIAM

Single	}	.10	.15	.50
Crimson				
White				
Holborn Glory—Huge trusses each with a white eye				
Newport Pink				
Mixed.....				
Double Mixed10	.20	.70	

FLOWER MIXTURES

	Pkt.	1/4 oz.	1 oz.
CUT FLOWER MIXTURE—Choice annuals with long stems and an easy habit of growth10	.15	.40
SCATTERGARDEN MIXTURE—Easy-to-grow annuals to brighten up some neglected corner10	.15	.40
CHILDREN'S MIXTURE—Bright annuals which are the answer to the youngster's desire to "Plant a garden like Daddy"10	.15	.40
PERENNIAL MIXTURE—Over forty little-known hardy flowers in this mixture10	.25	.90
ROCK GARDEN MIXTURE—Rare and unusual flowers for rock work10	.25	.90

HART'S LAWN GRASS SEED

Fine lawns are made from a careful blend of various grasses, each one calculated to fill some particular need. No single variety of grass alone will make a desirable, durable turf. One sort is at its best during the summer, another in the fall; one grows best in sandy soil, another in sweet soil. To meet every condition and every contingency is the purpose of our blending.

We have blended and tried various grass formulae for years, adding a little here and subtracting a little there until we have perfected blends, which, we feel, are as nearly perfect as they can be made. Hundreds of landscape architects can testify to the high quality and purity and the general all around merit of our Lawn Grass Seed.

Hart's Elm Tree Mixture—There is no need for us to tell our old customers how good this mixture is. Thousands of fine lawns throughout New England testify to that. If your lawn is shabby or worn this is the time to renew it. Kentucky Blue Grass, Fancy Red Top and Chewings Fescue make up the bulk of this mixture to which is added White Clover and Creeping Bent in the proper proportion. We know of no mixture at a similar price containing all of these expensive grasses.

Hart's Standish Park Mixture—This contains a much larger proportion of the fine bladed, long-lived grasses including Creeping Bent and does not contain Clover. It takes somewhat longer to establish itself than the Elm Tree Mixture but once established is remarkably beautiful and enduring.

Hart's Evergreen Mixture—An economical blend where quick results are desired, although it contains a higher percentage of the more reasonably priced grasses which are not so enduring.

Hart's Shadow Mixture—A blend for partially shaded spots which will do excellently. This mixture contains a good proportion of Rough Stalked Meadow Grass but does not contain White Clover or Orchard Grass.

Hart's Shady Place Mixture—A mixture calculated to overcome complete shade. Try it in that spot where you have been unable to make grass grow. You will be surprised at the results. It is composed only of the finest grasses and does not contain Clover or Orchard Grass.

Hart's Special Bent Formula—For the Putting Green or the Lawn—A lawn seeded with this splendid mixture and properly cared for will in all respects resemble the putting green of a golf course. It is absolutely essential, however, to keep the grass closely cut and well rolled and to feed it regularly and thoroughly with fertilizer and water. The basis of the mixture is the finest of imported and domestic Bent Grasses. This mixture does not contain White Clover.

We will be pleased to quote on any special mixtures you require or to advise on any particular problems in regard to your lawn. We also do considerable business in mixtures for:

Airports	Athletic Fields
Polo Fields	Terraces
Golf Fairways	Seaside Plots
Putting Greens	Cemeteries

and will be very glad to make prices at your request.

STATE OF CONNECTICUT OFFICIAL MIXTURES

The State of Connecticut has, after investigation and public hearing, established recommended lawn grass formulas which are especially adapted for Connecticut soil and climatic conditions. We have registered our formulas with the Commissioner of Agriculture and can therefore offer sealed bags of these extremely high quality blends of pure fine-leaved permanent grasses, producing the finest of velvety turfs.

GOLD SEAL GRADE

Contains: Astoria Bent, New Zealand Chewings Fescue, Kentucky Blue Grass, White Dutch Clover and Fancy Red Top. Inert Matter less than 3%.

One lb. 90c; 2 lbs. 1.75; 3 lbs. 2.50; 5 lbs. 4.00; 10 lbs. 7.50.

BLUE SEAL GRADE

Contains: New Zealand Chewings Fescue, Kentucky Blue Grass, White Dutch Clover, Fancy Red Top, and Domestic Rye Grass. Inert Matter less than 4%.

1 lb. 75c; 2 lbs. 1.45; 3 lbs. 2.10; 5 lbs. 3.25; 10 lbs. 6.00.

RED SEAL GRADE

Contains: Kentucky Blue Grass, White Dutch Clover, Fancy Red Top, and Domestic Rye Grass. Inert Matter less than 7%.

1 lb. 60c; 2 lbs. 1.15; 3 lbs. 1.65; 5 lbs. 2.50; 10 lbs. 4.75.

THE BENT GRASSES

South German Mixed Bent—Compact, creeping, rooting stems. Its rapid growing, spreading habit and its stoloniferous roots make a dense compact turf which is enduring and is really improved by constant trampling. This is not a pure strain but is composed of three different Bent Grasses. 1 Lb. \$1.00; 10 Lbs. 90c per lb.

Colonial Bent (Rhode Island) (Upright)—Produces a fine close turf of excellent color readily adaptable to all soils. 1 Lb. 90c; 10 Lbs. 80c per lb.

Astoria Bent—A high type of upright Bent, very pure and very clean. 1 Lb. 90c; 10 Lbs. 80c per lb.

LAWN GRASS MIXTURES

	1 lb.	2 lbs.	3 lbs.	5 lbs.	10 lbs.	20 lbs.	100 lbs.
ELM TREE45	.85	1.10	1.75	3.25	6.25	30.00
STANDISH PARK55	1.00	1.40	2.25	4.25	8.25	40.00
EVERGREEN35	.65	.90	1.40	2.60	5.00	24.00
SHADOW40	.75	1.05	1.65	3.10	6.00	29.00
SHADY PLACE55	1.00	1.40	2.25	4.25	8.25	40.00
BENT FORMULA80	1.50	2.10	3.25	6.00	11.00	50.00



1 9 3 8