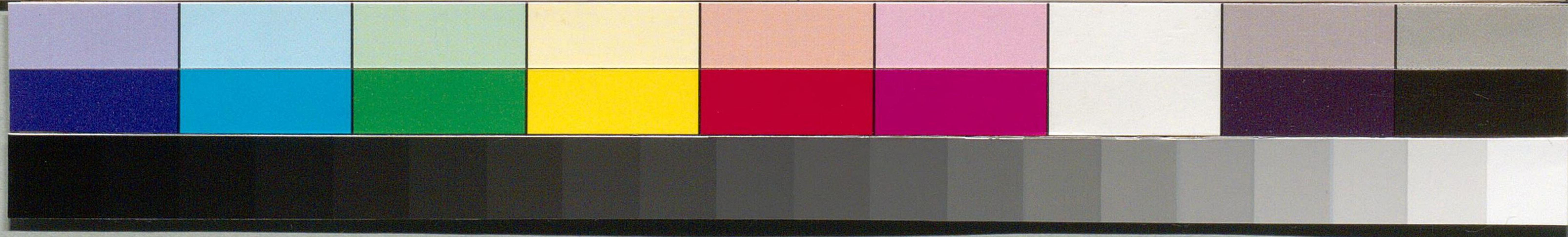
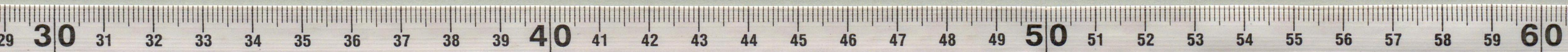


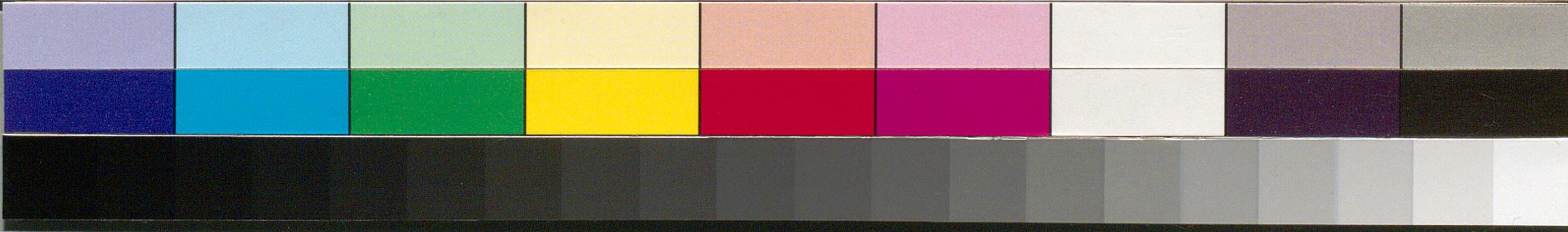


白金様所下之書宛

寺島宗則

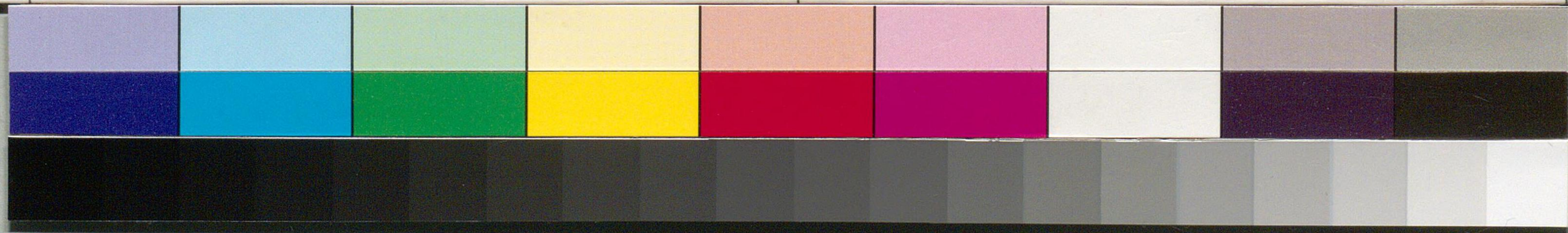


Handwritten Japanese calligraphy on a brown paper envelope. The text is written in a cursive style (sōsho). The characters are arranged vertically, with the largest characters in the center and smaller characters on the sides. The text appears to be a name or a title, possibly "寺島宗則" (Terajima Munonori).



Handwritten text on a piece of aged, yellowish paper, possibly a document or envelope. The text is written in a cursive style, likely Japanese calligraphy, and is oriented vertically. The characters are faint and difficult to decipher precisely, but appear to be arranged in two columns. The right column contains a large character at the top, possibly '山' (Yama), followed by several smaller characters. The left column contains a few characters, including what might be '山' (Yama) at the bottom.

29 30 31 32 33 34 35 36 37 38 39 40 41 42 43 44 45 46 47 48 49 50 51 52 53 54 55 56 57 58 59 60



此乃
乃乃乃乃
乃乃乃乃
乃乃乃乃
乃乃乃乃
乃乃乃乃

