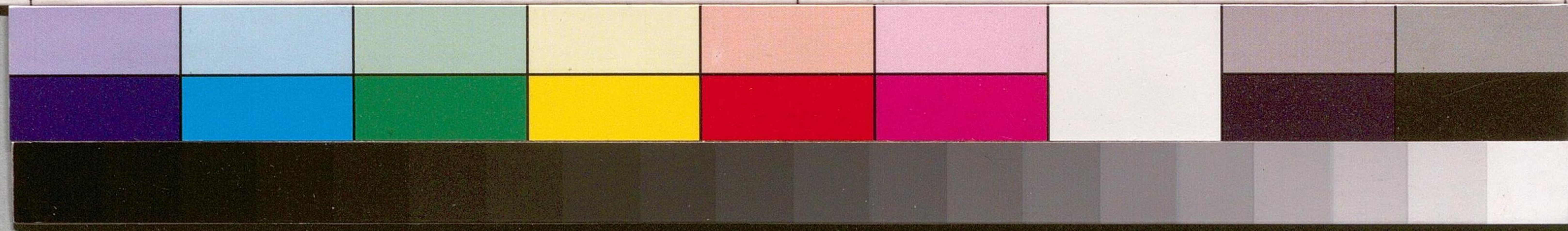
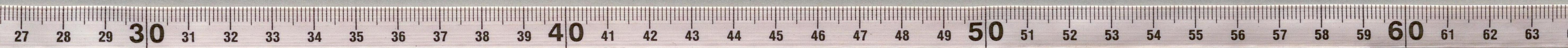


Handwritten text on a vertical strip of aged paper, likely a document or envelope. The text is written in a cursive style and is mostly illegible due to fading and the age of the paper. Some faint characters are visible, including what appears to be '寺島' (Terajima) at the bottom.



国立国会図書館 寺島宗則関係文書 42

自七月廿六日奉旨傳修治

方寸中出此成篇之書有報

此山白比十五海山納付

此山白比十五海山納付

此山白比十五海山納付

寺島宗則

由新原新海

寺島宗則