

Historic, Archive Document

Do not assume content reflects current scientific knowledge, policies, or practices.

ROSE "EDITOR McFARLAND" gets FIRST PRIZE

Atlantic City Flower & Garden Pageant
Awarded to THE CONARD-PYLE CO., Sept. 7, 1931
"for the best Rose in the show."



Urge Fall Planting of Roses

Lick next Spring's cheap competition by getting on the ground first, winning the cream. Let your customers benefit from fresher plants that get well set over Winter (Nature's plan), that start growing next Spring before other Roses can be planted. More vigorous bushes, better blooms, result. . . . Be successful. Feature new varieties such as EDITOR McFARLAND, illustrated above, and 17 other Novelties Pages 2 and 3 herein.)

WHOLESALE PRICE LIST FALL 1931



THE CONARD-PYLE COMPANY

ROBERT PYLE, *President*
West Grove, Pa., U. S. A.
Nurserymen Since 1897

The CONARD-PYLE COMPANY

ROBERT PYLE, President

★ ROSE CREAM

18 New Roses From 450 Novelties
of 1929-1930-1931

First and exclusive offerings in America (here marked ★) Some our own introductions, others from leading European originators. All after careful observation abroad or in our own Test Gardens at West Grove. Here's your chance to share in exclusive market. Meritorious novelty builds the demand, scarcity pegs up the price.

No. 1 dormant 2-year field plants, West Grove-grown on Mutiflora Seedlings . . . ready November 1.

- | | 10 | 100 |
|--|---------|----------|
| ★AMI QUINARD. HT. Deepest black-red | \$11.00 | \$100.00 |
| Vastly superior to <i>Hawthorn Crimson</i> ; finer texture, deeper color. Awarded Certificate of Merit, Bagatelle, 1930. | | |
| ★AMI L. CRETTE. HT. Rose-red | \$8.50 | \$75.00 |
| Distinct bedding Rose. Long, husky stems with wealth of blooms. Abundant leathery foliage. Growth upright, branching and vigorous. | | |
| CHARLES P. KILHAM. Per. Flaming orange | \$7.00 | \$60.00 |
| A perfected <i>Mme. Edouard Herriot</i> . Better form, more petals, long stems for cutting, better habit, larger and more persistent foliage. Divergent grower, fit to bed. | | |
| ★DIRECTOR RUBIO. HT. Cochineal-pink | \$6.00 | \$50.00 |
| <i>Outshines every other brilliant pink</i> ; holds color, rain or shine. Medium height; compact form. Ideal bedder. Outstanding both in luminous color and bizarre form; color is unique. Petals of open flowers bring to mind the ruffled feathers of a swan. A new type of Rose to add zest to any Rose Garden. | | |
| ★EDITOR McFARLAND. HT. Rose pink | \$13.50 | \$125.00 |
| (See cut, front cover). Named in honor of Dr. J. Horace McFarland, for 16 years Editor of The American Rose Annual and for 2 years President of The American Rose Society. Got First Prize, Atlantic City, 1931 (Details Page 1). Won a Certificate of Merit of the first class from the Lyonnaise Society of Horticulture in 1929. Rose-pink, mysteriously veiled with yellow. Similar to <i>Radiance</i> in plant habit, ruggedness, persistent, healthy foliage. Fine for cutting or for the decorative effect of a big bush of blooms. | | |
| GOLDEN GLEAM. Pernet. Butter-cup yellow | \$10.00 | \$90.00 |
| Recommend it as a winner to anyone who exhibits Roses at his local Rose Show. Gold Medal of the King, at Barcelona, Spain, 1929. Strong stems. Good bedder. | | |
| ★JOYOUS CAVALIER. HT. Brilliant red | \$5.00 | \$40.00 |
| "Made" for bright group plantings, this jolly new red does not blue and blooms continuously. Bush almost shrub-like, somewhat on order of <i>Gruss an Teplitz</i> . Long stems. Delicate fragrance. | | |
| ★KARDINAL PIFFL. Pernet. Orange pink | \$6.00 | \$50.00 |
| Winner of Bagatelle Gold Medal, 1926. A very active bloomer with fruity fragrance and well-arranged double flowers. Already noted for quantity and quality of blooms. | | |

Note photograph pages 12 and 13 this List.
See colored illustrations in Retail Catalog. Copies free.

WHOLESALE PRICE-LIST

FALL, 1931

★ ROSE CREAM

18 New Roses From 450 Novelties
of 1929-1930-1931

- 10 100
- ★LEONARD BARRON. HT. Pink, copper...\$13.50 \$125.00
Named for Horticultural Editor of "The American Home." Approved by Mr. Barron himself in our Test Grounds. A finished bedding Rose of extreme hardiness. Huge, long-lasting flowers. Distinct fragrance of red cedar.
- ★MRS. PIERRE S. du PONT. HT. Golden yellow\$11.00 \$100.00
Perpetual bloomer, seldom without flowers. Through merit alone won highest score and Premier Prize at Bagatelle. Neat grower like *Mme. Butterfly*. If you want a yellow, get next to this top-of-the-list performer.
- ★NATIONAL FLOWER GUILD. HT. Scarlet crimson \$5.00 \$40.00
Named for the National Flower Guild because it has a number of excellent characteristics that make a Rose valuable to every gardener. *Radiance* vigor, hardiness, freedom of bloom, large healthy foliage, long stems. Never blues. Delightfully fragrant.
- ★NUNTIUS PACELLI. HT. Snow-white --- \$6.00 \$50.00
An excellent bedder. Continuous performer. Very fragrant, a rare quality in white Roses. Distinctly different from "*Kaiserin*," and more vigorous. One of the best whites.
- ★SYRACUSE. HT. Crimson \$8.50 \$75.00
An up and doing improvement over *Hadley*; finer flowers like great scarlet crimson balls. Because of heavy petalage, blooms last unusually long, brilliant color holds equally well. Leathery foliage. Very hardy.
- ★THOMAS A. EDISON. HT. 2-tone pink \$16.00 \$150.00
Sturdy growth and healthy foliage that made *Radiance* so popular. Quantities of great, solid blooms ten days later than most Hybrid Teas. Flowers last well indoors.
- ★DRUSCHKI RUBRA. HP. Red *Frau Karl* --- \$8.50 \$75.00
Hybrid of *American Beauty* and *Frau Karl Druschki*, this red "*Druschki*" has better foliage and delightful perfume.
- ★PRESIDENT BRIAND. HP. Clear pink... \$7.00 \$60.00
Sends out crop after crop of mammoth clear pink "peony" Roses. A splendid example of the new strain of perpetually-blooming HPs.
- ★SCHOENER'S NUTKANA. Rose-pink --- \$6.00 \$50.00
A shrub rose, or may even be trained as a pillar when the plant matures. Very early, large single blooms and shapely pointed buds, clear rose-pink, literally envelope the plant. No other Rose produces such glorious abundance of blooms. Foliage abundant and has leathery texture of *Paul Neyron*. Brightly colored Rose-hips add color to plants in Fall and early Winter.
- ★MME. GREGOIRE STAECHELIN. CLI.... \$6.00 \$50.00
Pearl pink, introduced 1927. *Complete details page 5.*

New Roses get you more business where extra plants of the common varieties would be unwelcome. New Roses put you next to better trade eager for this quality, glad to pay the price.

No. 1 dormant 2-year field plants, West Grove-grown on Multiflora Seedlings . . . ready November 1.

The CONARD-PYLE COMPANY

ROBERT PYLE, President

★ ROSES---Continued

No. 1 dormant 2-year field plants, West Grove-grown on Multiflora Japonica Seedlings . . . ready November 1.

Roses are not like ordinary nursery stock—they cannot be kicked about in the way some nurserymen handle shrubs and fruits. Roses must be treated with exceptional care, with every precaution, to keep their growing energy sealed and protected. Buy and sell ★ ROSES because they are handled by *Rose Specialists* with 34 years' experience in studying and improving methods. You can be sure of plants chock-full of *life*. You'll find ★ ROSES easier to sell, for they look better, command interested attention, bring a good price. Tie up with ★ ROSES!

HYBRID TEAS

100

Abol. Truly white and fragrant!	\$60.00
Angele Pernet. Unique orange; semi-single; holly leaf....	40.00
Ariel. Orange-flame; good foliage	40.00
E. G. Hill. Large dazzling scarlet flowers	60.00
Gruss an Aachen. For borders or beds; fawn and white	35.00
Imperial Potentate. Rich, sparkling pink; dependable	35.00
Joanna Hill. Darker than <i>Sunburst</i> ; perfectly formed	60.00
Kaiserin Aug. Viktoria. Yet the most popular white ...	35.00
Konigin Carola. Improvement on <i>Caroline Testout</i>	35.00
Mme. Butterfly. Tender pink; lasting when cut	35.00
Margaret McGredy. Fine orange scarlet; strong stems	35.00
Miss Rowena Thom. Late introduction like <i>Radiance</i> ..	35.00
Mrs. Charles Bell. Shell pink sport of famous <i>Radiance</i>	35.00
Mrs. G. A. Van Rossem. Spectacular new deep red- orange, maroon veins	50.00
Paloma Falco. Sensational new coppery pink; foliage persistent	50.00
Pax Labor. Pale golden yellow; glossy foliage	35.00
Rose Hill. Marvelous new <i>Columbia</i> . Darker color....	40.00
Souv. de Alex. Bernaix. New active, red leader.....	60.00
Souv. de Claudius Pernet. Sulphur yellow. Buds good	35.00
Talisman. The multi-colored much-talked-of novelty....	50.00
Ville de Paris. Tops other yellows with vivid butter- cup color, and resistance to weather and disease	40.00
Westfield Star. A white <i>Ophelia</i> with lemon sheen	40.00

RUGOSAS and Similar Types

100

Agnes. "New departure" yellow Rugosa	\$50.00
Conrad F. Meyer. Silvery pink "trellis-beautifier"	35.00
Dr. E. M. Mills. Light primrose. <i>Hugonis</i> -hybrid with Rugosa blood	35.00
Max Graf. Rapid-growing trailer for banks; silky rose	40.00
Nur Mahal. Crimson everblooming shrub rose; fit for trellises	40.00
Prosperity. Oak-hardy, all summer bloomer; grows 6 to 8 ft. White	40.00
Ruskin. Deep crimson; abundant June bloomer. Like an HP.	40.00
Turke's Rugosa. Twin of <i>Conrad F. Meyer</i> ; possibly more fragrant	40.00

Note photograph pages 12 and 13 this List.

WHOLESALE PRICE-LIST

FALL, 1931

★ ROSES---Continued

Color your Selling With the Colorful
SPANISH BEAUTY

New Climber, Mme. Gregoire Staechelin



BAMBOO-STAKED SPANISH BEAUTIES

Photographed Midsummer.

. . . plants now cover this man's shoulders

1. Winner of peak honors at home and abroad. In 1927 secured BAGATELLE GOLD MEDAL—highest international recognition that a Rose can receive. Producer PEDRO DOT, won first JOHN COOK MEDAL of American Rose Society (awarded June 11, 1930) for STAECHELIN "best Rose introduced in past 3 years."
2. "Without protection, proved perfectly hardy" in Rhode Island. Hardiness also proved by seven consecutive winters at West Grove. Vigorous; growing easily 12 feet or more, each year climbing higher. Foliage ample and leathery.
3. Introduced in U. S. A. 1927 by The Conard-Pyle Company, Rose Specialists for 34 years. Now, as evidence of its superiority over other Climbers, customers write: "One of sensational varieties among newer Climbers." "Without exception handsomest Climbing Rose I have ever seen." "Beyond words in beauty of bloom," and so on.
4. Winning color; iridescent pearl-pink, splashed with carmine. Ask about colorplates to see for yourself its appealing color, and to show your customers. The plates, in addition, carry accurate description and space for your price and your name.
5. Bright, fragrant bouquets with 12 to 15-inch stems. Blooms but once a year, but the buds come three to five on a stem, one after the other to make a long blooming period.
6. Happy and at home on fences, pergolas, pillars. STAECHELIN is a true climber and can be used effectively in all sorts of situations with abundant satisfaction.

No. 1 dormant 2-year field plants, West Grove-grown on Multiflora Japonica Seedlings . . . ready November 1.

75c each, 10 for \$6, 100 for \$50.

MULTIFLORA JAPONICA SEEDLINGS

Sturdy, selected understock such as used in budding

★ Roses—Prices by thousand: 2-3 m. m., \$5;

3-4 m. m. \$10; 4-6 m. m., \$15.

The CONARD-PYLE COMPANY

ROBERT PYLE, President

★ ROSES---Continued

ROSA HUGONIS—"Golden Shrub Rose of China"



1. Wealth of charming golden yellow flowers about Forsythia-time.
2. Graceful, compactly-arranged, self-supported growth.
3. Miniature, sharp thorns; thick dainty foliage.
4. Tested and approved for hardiness.
5. Impenetrable and protective as a flowering hedge.
6. Distinctive for an all-season ornamental.

Dormant 2-year field plants (own roots) ready November 1.
2 to 3 ft., 10 for \$3; 100 for \$25.

HYBRID PERPETUALS

No. 1 dormant 2-year field plants, West Grove-grown on Multiflora Seedlings . . . ready November 1.

	100
Anna de Diesbach. Carmine pink; often repeats	\$30.00
Frau Karl Druschki. "White American Beauty"	30.00
General Jacqueminot. "The Jack Rose." Clear red	30.00
Henry Nevard. New. Some consider best of reds	40.00
John Russell. Handsome new red. Often listed HT	30.00
Mme. Albert Barbier. Most continuous blooming HP.	
A magnified <i>Mrs. Aaron Ward</i>	35.00
Magna Charta. Popular pink used for Easter pot trade	30.00
Paul Neyron. One of grandest HPs; mammoth rose-pink	30.00
S. M. Gustave V. New solid <i>Paul Neyron</i> pink	30.00

CLIMBERS

No. 1 dormant 2-year field plants, West Grove-grown on Multiflora and own roots . . . ready November 1.

	100
Albertine. Midseason. Salmon orange; double	\$40.00
Bloomfield Courage. Midseason. Small, crimson; single	40.00
Breeze Hill. Late. Pink and fawn; double	40.00
Climbing American Beauty. Early. Sweet, double red	30.00
Climbing Mme. Butterfly. Salmon; sport of bush	35.00
Coronation. Late. Preferred to <i>Excelsa</i> . More even color	25.00
Dorothy Perkins. Late. Shell pink; double	25.00
Emily Gray. Early. Truly yellow; double	35.00
Evangeline. Late. White, tipped pink; single	25.00
Excelsa. Late. Red <i>Dorothy Perkins</i> ; double	25.00
Gardenia. Early. Yellow to creamy white; double	25.00
Ile de France. Mid. Semi-double <i>American Pillar</i>	35.00
Kathleen Harrop. Early. Pale shell pink; double	40.00
Milano. Mid. New, nasturtium pink, yellow base, double	40.00
Mme. Gregoire Staechelin. Early. New pink; see P. 5	50.00
Mrs. M. H. Walsh. Late. White. Good ground cover	25.00
White Dorothy. Late. White <i>Dorothy Perkins</i>	25.00
Wichuraiana. Very late. White, golden anthers; the ground cover	20.00

WHOLESALE PRICE-LIST

FALL, 1931

POTTED EVERGREENS

2¼-in. pot-grown plants—you'll root for their roots!

Feature them for Dish Gardens, Small Rockeries; you are bound to profit, for you can plant left-overs.



JUNIPERUS DEPRESSA PLUMOSA — JUNIPERUS EXCELSA STRICTA
... for Dish Gardens, Small Rockeries, Lining Out

You'll find these Miniature Evergreens unequalled, too, for lining out. Because they are reliably rooted. Their growing power is sealed in by a winter rest-period. And they have reputation for unbroken rows, solid satisfaction. Naturally, you can bank on these plants to build your bank balance.

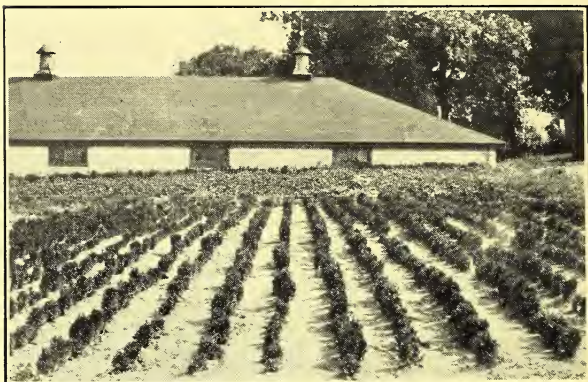
	100	1000
CHAMAECYPARIS laws. alumi (<i>Scarab C.</i>)	\$12.00	
ILEX crenata (<i>Japanese Holly</i>)	15.00	
JUNIPERUS ch. mascula (<i>Masculine Ch. J.</i>)	12.00	\$100.00
ch. pfitzeriana (<i>Pfitzer Juniper</i>)	14.00	120.00
comm. hibernica (<i>Irish Juniper</i>)	10.00	90.00
depressa plumosa (<i>Plumed Spreading J.</i>)	18.00	150.00
excelsa stricta (<i>Spiny Greek J.</i>)	25.00	
virg. glauca (3-in. pots)	25.00	
RETINOSPORA filifera (<i>Thread Retinospora</i>)	8.00	65.00
obtusa (<i>Hinoki Cypress</i>)	15.00	120.00
obtusa compacta (<i>Football Cypress</i>)	12.00	100.00
obtusa gracilis (<i>Slender Hinoki Cypress</i>)	12.00	100.00
pisifera (<i>Sawara Retinospora</i>)	8.00	75.00
pisifera aurea (<i>Golden Sawara Retinospora</i>)	8.00	75.00
plumosa (<i>Plume Retinospora</i>)	10.00	90.00
plumosa aurea (<i>Golden Plume Retinospora</i>)	9.00	75.00
plumosa lutescens (<i>Dwf. Yel. Pl. Cyp.</i>)	9.00	75.00
squarrosa veitchi (<i>Veitch Moss Cypress</i>)	10.00	90.00
TAXUS cuspidata (<i>Spreading Japanese Yew</i>)	18.00	150.00
cuspidata nana (<i>Dwarf Japanese Yew</i>)	25.00	
media hicksi (<i>Hicks Yew</i>)	25.00	
THUJA occ. compacta (<i>Parsons Arborvitae</i>)	9.00	75.00
occ. elegantissima (<i>Golden-tipped Arb.</i>)	9.00	75.00
occ. globosa (<i>American Globe Arborvitae</i>)	9.00	75.00
occ. lutea (<i>George Peabody Arborvitae</i>)	10.00	90.00
occ. pumila (<i>Green Globe Arborvitae</i>)	9.00	75.00
occ. pyramidalis (<i>American Pyr. Arborvitae</i>)	8.00	75.00
occ. rosenthali (<i>Rosenthal Arborvitae</i>)	9.00	75.00
occ. vervaeneana (<i>Vervaene Arborvitae</i>)	8.00	65.00
occ. wareana (<i>Siberian Arborvitae</i>)	8.00	65.00

The CONARD-PYLE COMPANY

ROBERT PYLE, President

EVERGREENS

Freshen your selling list by adding a few choice varieties from these pages . . . and move your plants more quickly.



BUXUS SEMP. SUFFRUTICOSA

. . . for edging walks and flower-beds

BUXUS sempervirens.

Common Box

A faster and less dense growing form of dwarf boxwood. For formal hedges.

	10	100	1000
12 to 15 in. _____	\$4.00	\$35.00	\$300.00

sempervirens suffruticosa.

True Dwarf Box

Dwarf grower, with very dark green leaves. A most beautiful plant for edging walks and flower-beds.

	10	100	1000
4 to 6 in. _____	\$2.00	\$15.00	\$135.00
6 to 8 in. _____	3.00	25.00	225.00

CHAMAECYPARIS lawsoniana alumi.

Scarab Cypress

Of columnar habit; foliage very glaucous, with a bluish metallic hue. Best blue columnar form.

	10	100
2¼-in. pots _____	\$1.50	\$12.00
1 to 1½ ft. B. & B. _____	8.00	75.00

ILEX crenata.

Japanese Holly

Much-branched evergreen shrub hardy as far north as New York. Its compact growth and beautiful dark green foliage and stems make it ideal for planting among other small evergreens.

	10	100
2¼-in. pots _____	\$2.00	\$15.00

JUNIPERUS ch. albovariegata.

Whiteleaf Chinese Juniper

Light bluish foliage with creamy branches interspersed.

	10	100
Formal pyramid useful in low plantings. _____		
2 to 2½ ft. B. & B. _____	\$20.00	\$175.00

ch. mascula

"Masculine" Chinese Juniper

Masculine form of *Juniperus chinensis*. A much branched, upright, pyramidal bush, almost columnar. Most desirable ornamental plant.

	10	100	1000
2¼-in. pots _____	\$1.50	\$12.00	\$100.00
3 to 4 ft. B. & B. _____	35.00	300.00	

Natural clay-loam balls. And you know better balls mean more successful plantings, fewer replacements, greater satisfaction.

WHOLESALE PRICE-LIST

FALL, 1931

(JUNIPERUS) chinensis pfitzeriana.		<i>Pfitzer Juniper</i>	
Highly recommended, and perhaps the handsomest green Juniper. Medium to large grower, dense in center, spreading to pointed, feathery, graceful foliage.			
		10	100
2¼-in. pots	\$2.00	\$14.00	\$120.00
1 to 1½ ft. B. & B.	10.00	75.00	650.00
1½ to 2 ft. B. & B.	12.50	100.00	900.00
2 to 2½ ft. B. & B.	17.50	150.00	
communis hibernica.		<i>Irish Juniper</i>	
A very narrow pyramid. Useful for its spire-like effect.			
		10	100
2¼-in. pots	\$1.50	\$10.00	\$90.00
1½ to 2 ft. B. & B.	8.00	75.00	
2½ to 3 ft. B. & B.	20.00	150.00	
depressa plumosa.		<i>Plumed Spreading Juniper</i>	
A distinctive low-growing type, absolutely hardy, spreading and graceful in form. Silvery green, but in Autumn changes to a rich, beautiful purple. Useful for rockeries, grouping or in front of other Evergreens.			
		10	100
2¼-in. pots	\$2.50	\$18.00	\$150.00
excelsa stricta.		<i>Spiny Greek Juniper</i>	
Compact, well-shaped pyramid. Foliage gray-green. Most useful for formal effects.			
		10	100
2¼-in. pots	\$3.00	\$25.00	
squamata meyeri.		<i>Meyer Juniper</i>	
A beautiful deep blue evergreen of dwarf habit; very desirable.			
		10	100
2¼-in. pots	\$4.00	\$35.00	
virginiana burki.		<i>Burk Redcedar</i>	
A narrow fastigiate grower, with steel-blue foliage; very symmetrical.			
		10	100
2¼-in. pots	\$3.00	\$25.00	
3 to 4 ft. B. & B.	40.00	350.00	
virginiana glauca.		<i>Silver Redcedar</i>	
Probably the best variety of Cedar. Bluish gray foliage. A favorite for specimen work.			
		10	100
3-in. pots	\$3.00	\$25.00	
2½ to 3 ft. B. & B.	30.00	250.00	
PINUS montana mughus.		<i>Dwarf Mugho Pine</i>	
Distinct; of compact and prostrate habit, with the tips of branches ascending; the leaves are twisted slightly.			
		10	100
12 to 15 in. B. & B.	\$10.00	\$75.00	
15 to 18 in. B. & B.	15.00	125.00	



JUNIPERUS PFITZERIANA
 . . . perhaps the handsomest Green Juniper

The CONARD-PYLE COMPANY

ROBERT PYLE, President



SHEARED SPECIMENS OF *RETINOSPORA PISIFERA AUREA*
... one of the most exquisite Retinosporas

RETINOSPORA filifera.	<i>Thread Retinospora</i>		
An elegant, drooping form. The thread-like, pensile branchlets are very graceful and are furnished with small, sharp-pointed, glossy leaves.			
	10	100	1000
2¼-in. pots	\$1.20	\$8.00	\$65.00
12 to 15 in. B. & B.	3.00	25.00	200.00
1½ to 2 ft. B. & B.	12.50	100.00	
obtusa.	<i>Hinoki Cypress</i>		
Graceful tree; foliage bright, clear green. Grows slowly; marked Japanese appearance.			
	10	100	1000
2¼-in. pots	\$2.00	\$15.00	\$120.00
1½ to 2 ft. B. & B.	11.00	100.00	
obtusa compacta.	<i>Football Cypress</i>		
Almost spherical in shape. Good green during winter—useful in foundation planting.			
	10	100	1000
2¼-in. pots	\$1.50	\$12.00	\$100.00
4 to 6 in. B. & B.	4.00	35.00	
12 to 15 in. B. & B.	8.00	75.00	
obtusa gracilis.	<i>Slender Hinoki Cypress</i>		
Beautiful, rare type of Retinospora, dense in habit; more erect and pyramidal in growth than the others.			
	10	100	1000
2¼-in. pots	\$1.50	\$12.00	\$100.00
12 to 15 in. B. & B.	6.00	50.00	
pisifera.	<i>Sawara Retinospora</i>		
Loosely pyramidal, with excellent feathery foliage. It is a hardy, graceful and rapid-growing evergreen.			
	10	100	1000
2¼-in. pots	\$1.20	\$8.00	\$75.00
1½ to 2 ft. B. & B.	6.00	50.00	400.00
2 to 2½ ft. B. & B.	8.00	75.00	650.00
pisifera aurea.	<i>Golden Sawara Ret.</i>		
Golden feathery foliage. One of the most exquisite Retinosporas. Winter color.			
	10	100	1000
2¼-in. pots	\$1.20	\$8.00	\$75.00
1 to 1½ ft. B. & B.	4.00	35.00	300.00
1½ to 2 ft. B. & B.	6.00	50.00	400.00
2½ to 3 ft. B. & B.	12.50	100.00	900.00
plumosa.	<i>Plume Retinospora</i>		
Dwarf and dense-growing; branches slender and feathery. Very popular.			
	10	100	1000
2¼-in. pots	\$1.50	\$10.00	\$90.00
1½ to 2 ft. B. & B.	8.00	75.00	650.00
2 to 2½ ft. B. & B.	12.50	100.00	900.00
2½ to 3 ft. B. & B.	17.50	150.00	1400.00

WHOLESALE PRICE-LIST

FALL, 1931

(RETINOSPORA) plumosa aurea. *Gold. Plume Retinospora*

A golden form of the preceding. It is one of the most popular evergreens, particularly liked for its rich yellow foliage, which shows up well among the more somber evergreens.

	10	100	1000
2¼-in. pots	\$1.50	\$9.00	\$75.00
12 to 15 in. B. & B.	4.00	35.00	300.00
1½ to 2 ft. B. & B.	9.00	75.00	650.00
2 to 2½ ft. B. & B.	12.50	100.00	900.00

plumosa lutescens. *Dwarf Yellow Plume Cypress*

Forms a low, broad, round-topped bush; bright yellow-tipped branchlets.

	10	100	1000
2¼-in. pots	\$1.50	\$9.00	\$75.00
10 to 12 in. B. & B.	4.00	35.00	300.00
18 in. bushy, B. & B.	11.00	100.00	

squarrosa sulphurea. *Sulphur Moss*

A beautiful variety with sulphur-tinted shoots; quite distinct.

	10	100	1000
1 to 1½ ft. B. & B.	\$5.50	\$50.00	\$400.00

squarrosa veitchi. *Veitch Moss Cypress*

Silvery blue foliage, soft and graceful, gives woolly appearance. Broad, pyramidal outline in young plants.

	10	100	1000
2¼-in. pots	\$1.50	\$10.00	\$90.00
15 to 18 in. B. & B.	6.00	50.00	
1½ to 2 ft. B. & B.	11.00	100.00	

TAXUS cuspidata. *Spreading Japanese Yew*

Extremely hardy. Spreading, bushy habit. Rich, deep green leaves. Valuable for foundation planting.

	10	100	1000
2¼-in. pots	\$2.25	\$18.00	\$150.00
12 to 15 in. B. & B.	20.00	175.00	

cuspidata nana. *Dwarf Japanese Yew*

Often called "cuspidata brevifolia." One of the richest and most handsome dwarf evergreens and typically Japanese in its beauty. Spreading branches thickly clothed with short, dark green needles.

	10	100	1000
2¼-in. pots	\$3.00	\$25.00	
10 to 12 in. B. & B.	25.00	200.00	

media hicksi. *Hicks Yew*

A distinctly columnar form with upright branches and radially spreading leaves. Has proved hardy at Arnold Arboretum.

	10	100	1000
2¼-in. pots	\$3.00	\$25.00	\$200.00
4 to 6 in.	4.00	35.00	300.00



THE YEW: TAXUS CUSPIDATA NANA, TAXUS CUSPIDATA, TAXUS MEDIA HICKSI

... "Jewelry" to true plant-lovers.

The CONARD-PYLE COMPANY

ROBERT PYLE, President



TEN ACRES—200,000 ROSES—TO BE HARVESTED IN NOVEMBER. (Consult Pages 1-6 for varieties.)

THUJA occidentalis.

American Arborvitae

Splendid hedge plant of columnar habit; compact. Of merit for formal use.

	10	100
1½ to 2 ft. B. & B.	\$6.00	\$50.00
2 to 2½ ft. B. & B.	8.00	75.00
3 to 4 ft. B. & B.	17.50	150.00

occidentalis compacta.

Parsons Arborvitae

Dwarf, dense grower, almost globe-shaped. Bright green foliage. Handsome.

	10	100	1000
2¼-in. pots	\$1.50	\$9.00	\$75.00
12 to 15 in. B. & B.	6.00	50.00	400.00
15 to 18 in. B. & B.	8.00	75.00	650.00

occidentalis elegantissima.

Golden-tipped Arborvitae

Rich, lustrous green foliage; branches tipped with yellow. Fast grower.

	10	100	1000
2¼-in. pots	\$1.50	\$9.00	\$75.00
12 to 15 in. B. & B.	4.00	35.00	300.00
15 to 18 in. B. & B.	5.50	50.00	400.00
1½ to 2 ft. B. & B.	8.00	75.00	600.00

occidentalis globosa.

American Globe Arborvitae

Naturally globe-shaped. Useful for formal work.

	10	100	1000
2¼-in. pots	\$1.50	\$10.00	\$90.00
10 to 12 in. B. & B.	4.00	35.00	300.00
12 to 15 in. B. & B.	6.00	50.00	400.00

WHOLESALE PRICE-LIST

FALL, 1931



MEMBER. ROSE *Mrs. Pierre S. du Pont* IN THE FOREGROUND.
(for varieties and prices)

(THUJA) occidentalis hoveyi.	<i>Hovey Arborvitae</i>		
Oval in shape, nearly as broad as high. Bright green foliage.	10	100	1000
2¼-in. pots	\$1.50	\$9.00	\$75.00
occidentalis lutea.	<i>George Peabody Arborvitae</i>		
Showy, bright, yellowish green all through the winter, changing to golden yellow in spring. Forms a compact, broad pyramid.	10	100	1000
2¼-in. pots	\$1.50	\$10.00	\$90.00
12 to 15 in. B. & B.	6.00	50.00	
15 to 18 in. B. & B.	8.00	75.00	
occidentalis pumila.	<i>Green Globe Arborvitae</i>		
Dwarf; globe-shaped.	10	100	1000
2¼-in. pots	\$1.50	\$9.00	\$75.00
12 to 15 in. B. & B.	8.00	75.00	
15 to 18 in. B. & B.	12.50	100.00	
21 to 24 in. B. & B.	20.00	175.00	
occidentalis pyramidalis.	<i>American Pyramidal Arborvitae</i>		
A choice narrow columnar tree that grows from 20 to 30 feet high. Stays bright green in winter. Excellent for accents and formal planting.	10	100	1000
2¼-in. pots	\$1.20	\$8.00	\$75.00
1 to 1½ ft. B. & B.	4.00	35.00	300.00
1½ to 2 ft. B. & B.	6.00	50.00	400.00
2 to 2½ ft. B. & B.	10.00	75.00	650.00
2½ to 3 ft. B. & B.	12.50	100.00	900.00
3 to 4 ft. B. & B.	22.50	200.00	

The CONARD-PYLE COMPANY

ROBERT PYLE, President

(THUJA) occidentalis rosenthali.		<i>Rosenthal Arborvitae</i>	
Evergreen. Dense, rugged, columnar form. Slow grower.			
		10	100
2¼-in. pots	\$1.50	\$9.00	\$75.00
6 to 8 in. B. & B.	4.00	35.00	
occidentalis vervaeneana.		<i>Vervaene Arborvitae</i>	
Graceful, bronze, mottled tree for many uses.			
		10	100
2¼-in. pots	\$1.20	\$8.00	\$65.00
12 to 15 in. B. & B.	3.00	25.00	200.00
15 to 18 in. B. & B.	4.00	35.00	300.00
1½ to 2 ft. B. & B.	8.00	75.00	
2 to 2½ ft. B. & B.	12.50	100.00	900.00
2½ to 3 ft. B. & B.	17.50	150.00	1400.00
3 to 4 ft. B. & B.	22.50	200.00	1750.00
occidentalis vervaeneana variegata.		<i>Variieg. Verv. Arb.</i>	
		10	100
1½ to 2 ft. B. & B.	\$8.00	\$75.00	
2 to 2½ ft. B. & B.	11.00	100.00	
occidentalis wareana.		<i>Siberian Arborvitae</i>	
Compact, pyramidal habit; constant in color; fine for hedges and screens. Very hardy.			
		10	100
2¼-in. pots	\$1.20	\$8.00	\$65.00
12 to 15 in. B. & B.	4.00	35.00	300.00
15 to 18 in. B. & B.	6.00	50.00	400.00
1½ to 2 ft. B. & B.	7.50	60.00	
2 to 2½ ft. B. & B.	11.00	100.00	
(Biota) orientalis.		<i>Oriental Arborvitae</i>	
Tall and slender. Rich cheerful green. Fine for formal work.			
		10	100
3 to 4 ft. B. & B.	\$22.50	\$200.00	
(Biota) orientalis aurea nana.		<i>Berckman's Golden Arb.</i>	
Very pretty dwarf form with yellow-tinged foliage, changing to bronze.			
		10	100
18 to 21 in. B. & B.	\$20.00	\$175.00	
(Biota) orientalis elegantissima.		<i>Yellow Column Arb.</i>	
Compact and columnar. Assumes a rich, deep golden bronze color in winter. Handsome.			
		10	100
2½ to 3 ft. B. & B.	\$22.50	\$200.00	
3 to 4 ft. B. & B.	32.50	300.00	



SHEARED THUJA OCC. PYRAMIDALIS
 . . . a choice narrow columnar tree

WHOLESALE PRICE-LIST

FALL, 1931



OAK
BRAND

SHRUBS

Like the OAK, these Shrubs have a reputation for sturdiness and sound quality . . . Doesn't your better judgment say "Better use them *this Fall* to add *pull* to your folders. For special plantings. For all important orders."



THE "FATHER" OF OAK BRAND SHRUBS "IN PERSON" ON HOME NURSERY OF THE C.-P. CO. AT WEST GROVE, PA.

The Monarch Oak, the patriarch of the trees,
Shoots rising up, and spreads by slow degrees.

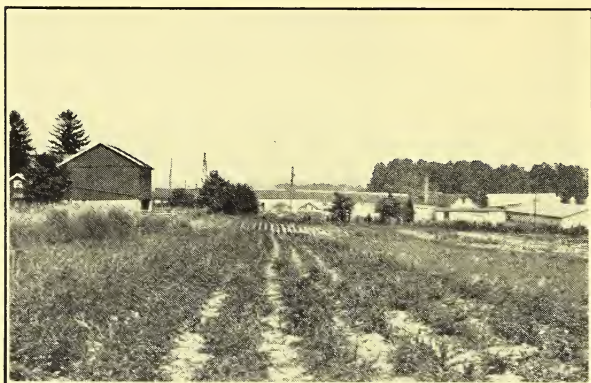
—DRYDEN.

ABELIA grandiflora.	<i>Glossy Abelia</i>		
Popular for border plantings. Dainty pink and white flowers abundantly produced. Almost evergreen.			
3-in pots	10	100	
	\$1.50	\$10.00	
ACER palmatum atropurpureum.	<i>Bloodleaf Japan. Maple</i>		
10 to 12 in. (Seedlings)	10	100	
	\$6.00	\$50.00	
1½ to 2 ft. (Seedlings)	17.50	150.00	
AKEBIA quinata.	<i>Fiveleaf Akebia</i>		
Dainty, beautiful vine, with purple flowers in May. Leaves deep green, persisting till winter.			
2-year	10	100	
	\$2.50	\$20.00	
AMPELOPSIS quinquefolia.	<i>Virginia Creeper</i>		
Valuable for rich fiery autumn coloring. Useful for natural effects. Quick grower.			
2¼-in. pots	10	100	1000
	\$1.00	\$6.00	\$50.00
2-year	1.50	12.00	
tricuspidata (veitchi).	<i>Japanese Creeper</i>		
Clings as it grows. Foliage in autumn turns crimson.			
2¼-in. pots	10	100	1000
	\$1.00	\$7.00	\$60.00
● tricuspidata atropurpurea.	<i>Purple Japanese Creeper</i>		
The habit of attaching itself firmly and closely to stonework placed <i>Ampelopsis tricuspidata</i> (<i>Boston Ivy</i>) in the forefront of popularity. Similar to the type and possesses the added attraction of dark purple leaves not changing to green.			
2¼-in. pots	10	100	1000
	\$1.50	\$10.00	\$90.00
3-in. pots	2.00	15.00	135.00

● The dot indicates newer varieties

The CONARD-PYLE COMPANY

ROBERT PYLE, President



BERBERIS TH. ATROPURPUREA (RED BARBERRY)

. . . should be planted in sun for best color

AZALEA amoena

Amoena Azalea

Evergreen. Conspicuous purple-red flowers, April-May.

	10	100
8 to 10 in. -----	\$4.00	\$35.00

hinodegiri

Hinodegiri Azalea

Evergreen. Large leaves. Loose growth. Flowers very bright carmine-pink. Effective in masses or with Rhododendron.

	10	100
8 to 10 in. -----	\$6.00	\$50.00

● BERBERIS julianae.

Wintergreen Barberry

Erect plant of open habit. Willow-like leaves, light green, sharply toothed and spined. New shoots soft, downy green, tinged with ruddy brown and bronze, a handsome color effect. Can be trimmed to make a dense bush of most attractive habit, and harmonizes well with rhododendrons, kalmias, and such other evergreen shrubs.

<i>A gem.</i>	10	100
2¼-in. pots -----	\$2.00	\$15.00
2-year, 8 to 10 in. -----	4.00	35.00

● thunbergi atropurpurea.

Redleaf Japanese Barberry

The new form with bright reddish purple foliage; should be planted in sun for best color.

	10	100	1000
12 to 15 in. -----	\$2.00	\$15.00	\$135.00
15 to 18 in. -----	2.50	20.00	180.00

thunbergi minor.

Box Barberry

Completely hardy. Dwarf, dense grower. The small leaves are a beautiful emerald-green in Spring, soft green in Summer, and rich red in Autumn. A neat little shrub excellent as a low hedge or border for rose-beds and a splendid foundation planting.

	10	100	1000
12 to 15 in. -----	\$2.50	\$20.00	\$180.00

● verruculosa

Warty Barberry

Holly-like dwarf spreading Evergreen Shrub. Curled, spined leaves of rich glossy green with silvery white undersides. Flowers yellow and fragrant. Plant likes a sheltered spot in shade or sun. Useful for rockeries, low hedges and edging taller shrubs. Attractive year-round.

	10	100
2¼-in. pots -----	\$3.00	\$25.00

BUDDLEIA davidi magnifica.

Oxeye Butterfly Bush

Extensive bloomer, even the first year. Flowers deep violet-rose, delightfully fragrant.

	10	100	1000
2-year -----	\$2.50	\$20.00	\$180.00

WHOLESALE PRICE-LIST

FALL, 1931

CALLICARPA purpurea.	<i>Chinese Beautyberry</i>		
Pink flowers in August; light purple berries.			
	10	100	1000
2¼-in. pots	\$1.00	\$6.00	\$50.00
1½ to 2 ft.	2.50	20.00	
CARYOPTERIS incana.	<i>Common Bluebeard</i>		
Compact bushes about 2 feet tall. Flowers sky-blue.			
	10	100	1000
12 to 15 in.	\$2.50	\$20.00	\$180.00
2 to 2½ ft.	5.00	45.00	
CLEMATIS paniculata.	<i>Sweet Autumn Clematis</i>		
Intensely sweet-scented, small, creamy white flowers completely cover the vine.			
	10	100	1000
2¼-in. pots	\$1.00	\$7.00	\$55.00
2-year	2.00	18.00	150.00
COTONEASTER horizontalis.	<i>Rock Cotoneaster</i>		
A low-growing, dark, shiny, evergreen with spreading branches. Suitable for rockeries. Pink flowers followed by red berries.			
	10	100	1000
2¼-in. pots	\$2.00	\$15.00	\$120.00
salicifolia.	<i>Willowleaf Cotoneaster</i>		
Half-evergreen Shrub. Very attractive, with arching branches covered with red berries in Fall and beautiful shaded red leaves persisting until mid-Winter. Excellent for rockeries.			
	10	100	1000
2¼-in. pots	\$1.50	\$12.00	\$100.00
gracilis.	<i>Slender Deutzia</i>		
White, bell-shaped flowers. Dwarf grower, nice for edging other shrubbery.			
	10	100	1000
12 to 15 in.	\$1.50	\$10.00	\$80.00
18 to 24 in.	2.00	16.00	140.00
gracilis rosea.	<i>Slender Pink Deutzia</i>		
Closely resembles <i>Slender Deutzia</i> . Light rose colored flowers. A pleasing variety.			
	10	100	
1 to 1½ ft.	\$2.50	\$20.00	
2 to 2½ ft.	3.50	30.00	
lemoinei.	<i>Lemoine Deutzia</i>		
Early white. Much superior to <i>D. gracilis</i> .			
	10	100	
1 to 1½ ft.	\$1.50	\$12.00	
2½ to 3 ft.	3.50	30.00	
● lemoinei compacta.	<i>Improved Lemoine Deutzia</i>		
Compact habit.			
	10	100	1000
1 to 1½ ft.	\$3.00	\$25.00	\$225.00
2 to 2½ ft.	4.50	40.00	



BERBERIS JULIANAE AND BERBERIS VERRUCULOSA
 . . . holly-like foliage, large thorns, spined leaves, winter color



EUONYMUS JAPONICUS

... very desirable when featured in tubs

● **(DEUTZIA) magnifica.** *Magnificent Deutzia*

A most distinct variety with exceptionally large clusters of pure white double flowers, produced in wonderful profusion. Easily the finest of all Deutzias.

	10	100
2¼-in. pots	\$1.50	\$10.00
1 to 1½ ft.	2.00	18.00
1½ to 2 ft.	2.50	20.00

● **macrothyrsa.**

Lemoine describes this variety as perhaps the most floriferous of his Deutzias; the tall shrub being covered on the whole length of its branches with a profusion of pure white flowers in panicles of an unusual size.

	10	100
2¼-in. pots	\$2.00	\$15.00
2 to 3 ft.	6.00	50.00

EUONYMUS japonicus. *Evergreen Burningbush*

A useful evergreen ornamental with glossy foliage. Moderate, shapely, upright grower. For group plantings, specimens, hedges; also very decorative when trimmed into compact form, featured in tubs.

	10	100	1000
2¼-in. pots	\$1.00	\$6.00	\$50.00
1 to 1½ ft. B. & B.	5.00	40.00	350.00
1½ to 2 ft. B. & B.	7.50	65.00	600.00

● **radicans acutus.** *Sharpleaf Wintercreeper*

Similar to the type, but more pointed leaves, lighter in color. A rapid grower and evidently the best *Euonymus* yet for steep banks as it is a very prostrate grower, showing no inclination to climb, roots at every place it touches soil and would be excellent to hold banks. Turns bronzed in cold weather.

	10	100	1000
2¼-in. pots	\$1.20	\$9.00	\$75.00
12 to 15 in.	3.00	25.00	200.00

WHOLESALE PRICE-LIST

FALL, 1931

● (EUONYMUS) *radicans minimus (kewensis)*.

Baby Wintercreeper

For rockeries this pretty variety is a delightful subject. Its small oval foliage is of a very dark green with lighter veins. Splendid trailing habit makes it desirable also for carpeting the ground.

	10	100	1000
2¼-in. pots	\$1.20	\$9.00	\$75.00

radicans vegetus.

Big-leaf Wintercreeper

A most beautiful vine, bearing bright red berries well into the winter.

	10	100	1000
12 to 15 in.	\$3.50	\$30.00	\$250.00

● FORSYTHIA *intermedia spectabilis*.

Showy Border

Acknowledged the finest Forsythia; much more profuse-flowering than the original type, and several shades richer in its glorious deep yellow. Plants vigorous and compact.

	10	100	1000
1½ to 2 ft.	\$2.00	\$15.00	\$135.00
2 to 3 ft.	2.25	18.00	160.00

HIBISCUS *double pink*.

Shrub-Althea

Very deep dark pink flowers.

	10	100	1000
2 to 3 ft.	\$2.00	\$15.00	\$135.00

● Wm. R. Smith.

Shrub-Althea

A splendid giant-flowering variety, naturally forming symmetrical bushy specimens. Glistening pure white flowers like great morning-glories fully four inches in diameter; under ordinary cultivation they open out flat quite different from the older types which only partially expand. Blooms when few Shrubs are in flower.

	10	100	1000
2¼-in. pots	\$1.20	\$10.00	\$80.00
2 to 3 ft.	2.50	20.00	180.00

HYDRANGEA *arborescens grandiflora*.

Snowhill Hyd.

Blooms right after early spring flowers are gone, and the great white flowers last until late August.

	10	100	1000
2 to 3 ft.	\$2.00	\$16.00	\$150.00

paniculata grandiflora.

Peegee Hydrangea

Old variety still demanded.

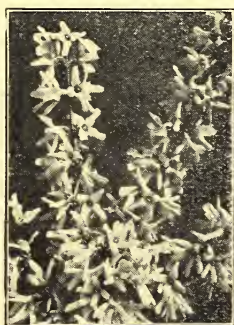
	10	100	1000
2 to 3 ft.	\$2.00	\$16.00	\$150.00

LAUROCERASUS *shipkaensis*.

Shipka Cherry-Laurel

One of the most popular broad-leaved evergreens in Europe; also a favorite in our Southern States. This variety has been proved hardy in Central New York. Frequently grown in tubs and used for house decoration. Slow-growing shrub with thick glossy leaves and rounded shape. Protect from severe winds.

	10	100
2¼-in. pots	\$1.50	\$12.00



DEUTZIA MAGNIFICA

FORSYTHIA INT. SPECTABILIS

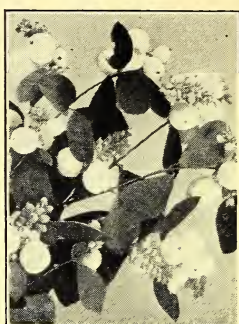
. . . larger flowers, more profusely borne

The CONARD-PYLE COMPANY

ROBERT PYLE, President



PHILADELPHUS VIRGINIAL
... for most bloom



SYMPHORICARPOS RACEMOSUS
... conspicuous berries.

LIGUSTRUM ibolium. *Ibolium Privet*

A cross between Ibota and California Privet, combining the hardiness and vigor of the former with the beauty of the latter.

	10	100	1000
2 to 3 ft.	\$1.00	\$6.00	\$50.00

ibota regelianum (Cuttings). *Regel Privet*

Very desirable for shrubbery or evergreen plantings.

Makes low, dense hedges.

	10	100	
1½ to 2 ft.	\$1.50	\$12.00	

ovalifolium. *California Privet*

Thrives in all kinds of soil and situations. The ever-popular hedge plant.

	10	100	1000
2 to 3 ft.	\$0.75	\$5.00	\$40.00

ovalifolium aureum. *Golden Privet*

Manda's true golden. Consistent. Leaves variegated with pale yellow. A rather slow grower.

	10	100	
1½ to 2 ft.	\$3.00	\$25.00	

LONICERA halliana. *Hall Japanese Honeysuckle*

Hardy evergreen foliage; continuous-blooming; flowers white, turning to pale yellow; very fragrant.

	10	100	1000
2-year	\$2.00	\$15.00	\$135.00

japonica aureo-reticulata. *Yellownet Jap. Honeysuckle*

Flowers yellow. Foliage veined yellow. Very ornamental.

	10	100	1000
2-year	\$2.00	\$15.00	\$135.00

morrowi. *Morrow Honeysuckle*

One of the most attractive berried bushes grown. Fine for screens or backgrounds to other shrubs. Yellow flowers; brilliant, long-lasting scarlet berries.

	10	100	1000
1½ to 2 ft.	\$2.00	\$15.00	\$135.00

● **PHILADELPHUS argentine.** *Silver-leaf Mock Orange*

Flowers borne three to a cluster; leaves silvery.

	10	100	
2 to 3 ft.	\$3.50	\$30.00	

Avalanche. *Dwarf Mock Orange*

Large, fragrant, white flowers on arching branches.

	10	100	
1½ to 2 ft.	\$1.50	\$12.00	
3 to 4 ft.	3.00	25.00	

● **Brachybotrys.**

"The best Philadelphus introduced from China," says Lemoine. Its tall branches are covered with large fragrant flowers which set it up as truly the finest of this new group.

	10	100	1000
2 to 3 ft.	\$3.50	\$30.00	\$250.00

WHOLESALE PRICE-LIST

FALL, 1931

- (PHILADELPHUS) **Enchantment.** *Imp. White Bouquet*
Lemoine describes this variety as an improved *Bouquet Blanc*. It makes a most striking appearance with long erect branches furnished with thick panicles of double white flowers. Blooms later than many; very desirable.

	10	100	1000
2¼-in. pots	\$1.20	\$10.00	\$80.00
2 to 3 ft.	3.50	30.00	

- **Glacier.** *Glacier Mock Orange*
Strong, erect grower; clusters of double white flowers, set in panicles having the appearance of one enormous double flower.

	10	100	1000
2¼-in. pots	\$1.50	\$10.00	\$80.00
2 to 3 ft.	3.00	25.00	

- **Virginal.** *Virginal Mock Orange*
Here is the most beautiful variety of its class. It produces large double-crested flowers of pure white, deliciously fragrant. Blooms two and one-half inches across and in May and early June completely cover the branches. Bloom all Summer and early Fall.

	10	100	1000
2¼-in. pots	\$1.20	\$10.00	\$80.00
2 to 3 ft.	2.50	20.00	180.00

PYRACANTHA coccinea lalandi. *Laland Firethorn*

Believed to be the only red-berried evergreen shrub except American and English Holly. Flowers white; berries orange-scarlet, beautifully contrasted against the green glossy evergreen foliage, cut sprays a glorious house decoration but at their best right on the bush, which may be sheared perfect hedge shape.

	10	100	
2¼-in. pots	\$2.25	\$18.00	
1 to 1½ ft. B. & B.	6.00	50.00	
2 to 3 ft. B. & B.	17.50	150.00	

SPIRAEA, Anthony Waterer. *Waterer Spirea*

The perpetually blooming Red Spirea. It makes nice shapely bushes 2 to 3 feet high and bears flat clusters of rich, rosy red flowers throughout the Summer.

	10	100	1000
12 to 15 in.	\$1.50	\$10.00	\$90.00
1½ to 2 ft.	2.50	18.00	160.00

thunbergi. *Thunberg Spirea*

Slender, arching branches, clothed with pure white flowers. Small, feathery, light-green leaves.

	10	100	1000
2½ to 3 ft.	\$2.75	\$22.00	\$200.00



PYRACANTHA COCC. LALANDI IN FOREGROUND
. . . large clusters of orange berries

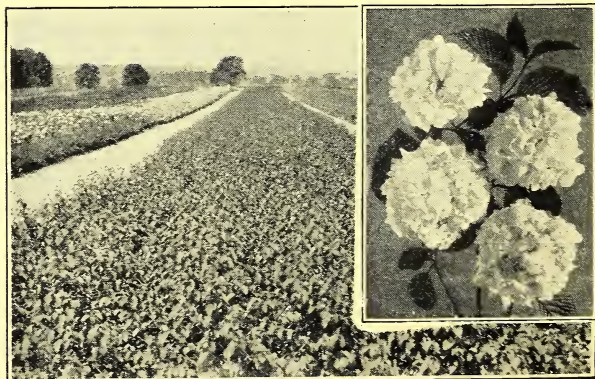
The CONARD-PYLE COMPANY

ROBERT PYLE, President

LINING OUT STOCK

Interest yourself in the 2¼-in. pot sizes. Add new items to your list at little cost. Fill vacant spaces in your fields. Lay lines for the better times now a-building.

(SPIREA) vanhouttei.	<i>Van Houtte Spirea</i>		
Most popular hardy Spirea. Pure snow-white flowers all over the plant.	10	100	1000
2 to 3 ft.	\$1.50	\$12.00	\$100.00
SYMPHORICARPOS racemosus.	<i>Common Snowberry</i>		
Conspicuous white berries; attractive foliage. Succeeds well in shaded locations.	10	100	1000
2 to 3 ft.	\$2.00	\$16.00	\$150.00
VIBURNUM rhytidophyllum.	<i>Leatherleaf Viburnum</i>		
Evergreen. Large, oblong leaves, deep green above, gray beneath. A bold, handsome shrub.	10	100	
3-in. pots	\$3.00	\$25.00	
tomentosum plicatum.	<i>Japanese Snowball</i>		
Top your list of desirable, worthwhile Shrubs with <i>Viburnum Plicatum</i> . For landscape effects it is of the highest merit because a handsome, compact grower with showy, heavy-ribbed, dark-green foliage peculiarly becoming. Graceful floral pieces also can be derived with the great white snowballs which fairly cover the bushes about Memorial Day. The 3-in. pots of this shrub, treated as a specialty for 34 years, have a reputation of being real producers.			
3-in. pots	10	100	1000
2 to 3 ft.	\$1.50	\$10.00	\$90.00
3 to 4 ft.	4.00	35.00	300.00
	5.00	45.00	400.00
WEIGELA Eva Rathke.	<i>Red-flowered Weigela</i>		
The Everblooming Weigela. Dark red flowers, marked white, and splendid foliage produce an effect not to be had in any other shrub.	10	100	1000
2 to 3 ft.	\$2.50	\$20.00	\$150.00
nana variegata.	<i>Variegated-leaf Weigela</i>		
Dwarf, compact, grower. Soft pink flowers.	10	100	1000
1½ to 2 ft.	\$2.00	\$15.00	\$120.00
rosea.	<i>Pink Weigela</i>		
Rose-pink flowers in great profusion. Vigorous grower.	10	100	
2 to 3 ft.	\$2.00	\$15.00	



VIBURNUM PLICATUM

... compact grower, showy foliage, snowballs Memorial Day.

WHOLESALE PRICE-LIST

FALL, 1931

Hardy Phlox



No. 1 PHLOX ON U. S. ROUTE No. 1

... more bunchy roots

Plants of this size transplant more easily because of more bunchy roots. They flower more abundantly with more perfect blooms. To the hardy garden or border Phlox lends a colorful touch hard to obtain with any other flowers.

One-year field—Prices: 100, \$7.00; 1000, \$60.00.

Beacon. Brilliant cherry-red.

Champs Elysees. Royal shade of rosy purple.

Miss Lingard. Earliest white; pale pink eye.

Mrs. Jenkins. Considered best pure white.

Prof. Schliemann. Lavender or lilac rose.

Rijnstroom. A lively Paul-Neyron-pink.

Thor. Salmon rose with scarlet glow.

Points of Interest

Prices. This list cancels all previous quotations. Goods quoted F. O. B. West Grove, Pa. Packing free for cash before shipment or extra at cost. 250 of kind at 1000 rate, 25 of kind at 100 rate. Prices intended only for those individuals or firms actually in the trade.

Conditions. Orders booked subject to crop losses through unavoidable causes. Shipments travel at purchaser's risk. Claims must be made promptly upon receipt of goods. If any stock proves untrue it will be replaced; liability limited to invoice value at time of shipment.

Terms. Cash, except where credit is established. Bills due in 60 days.

Other points. List conforms, for most part, with STANDARDIZED PLANT NAMES. Copy of Penn. State Certificate of Inspection on all orders.

The CONARD-PYLE COMPANY

Robert Pyle, *President* West Grove, Pa.

R. T. Satterthwait, Jonathan M. Steere, *Vice-Presidents*

Paul H. Graves, *Secretary*

E. P. Groff, *Treasurer*

Member American Association of Nurserymen, Eastern Nurserymen's Association, and Pennsylvania

Nurserymen's Association.

WHOLESALE PRICE-LIST

FALL, 1931

Distinct Profit With These Distinguished Peonies



FESTIVA MAXIMA (9.3), EARLY

... Best-known, most popular white Peony; strong growing commercial cut-flower variety.

Because these are varieties rated high by experts of the AMERICAN PEONY SOCIETY, use the stock to add cream to your list. To make new friends. To grow on. To beautify your display plantings. For cut-flowers. To take care of every order you get. Read these advantages again! Where else can you get so much value? Where so great an opportunity for profit? **Roots ready for immediate delivery.**

Well balanced, 3-to-5-eye divisions 100

Albert Crousse (8.6) Late. Delicate shell-pink	\$30.00
Augustin D'Hour (7.8) Midseason. Solferino red	30.00
Baroness Schroeder (9.0) Late. Flesh-pink and white	35.00
Couronne D'Or (8.1) Late midseason. "Crown of Gold"	18.00
Edulis Superba (7.6) Very early. Clear pink	18.00
Eugene Verdier (8.3) Late. Delicate hydrangea-pink.....	35.00
Felix Crousse (8.4) Midseason. Dazzling ruby red	25.00
Festiva Maxima (9.3) Early. Immense snow-white	18.00
Grandiflora (Rich.) (8.8) Very late. Sea-shell pink.....	35.00
James Kelway (8.7) Early midseason. White overlaid pink	35.00
Karl Rosenfield (8.8) Midseason. Clear glowing crimson	35.00
Lady Alexandra Duff (9.1) Mid. French white tinted blush	75.00
Louis Van Houtte (6.9) Midseason. Beautiful dark crimson	20.00
Marie Lemoine (8.5) Late. Lemon white	25.00
Mme. Ducl (7.9) Midseason. Silvery lilac pink	30.00
Meissonier (6.5) Late. Brilliant purple red	20.00
Mons. Jules Elie (9.2) Mid. Lilac pink shading deep rose	35.00
Tourangelle (9.4) Late mid. Pearly pink overlaid salmon	100.00
Tri. de L'Exp. de Lille (7.8) Late midseason. Hy- drangea pink, splashed crimson	20.00

THE CONARD-PYLE COMPANY

ROBERT PYLE, *President*

West Grove, Pa.

Nurserymen Since 1897