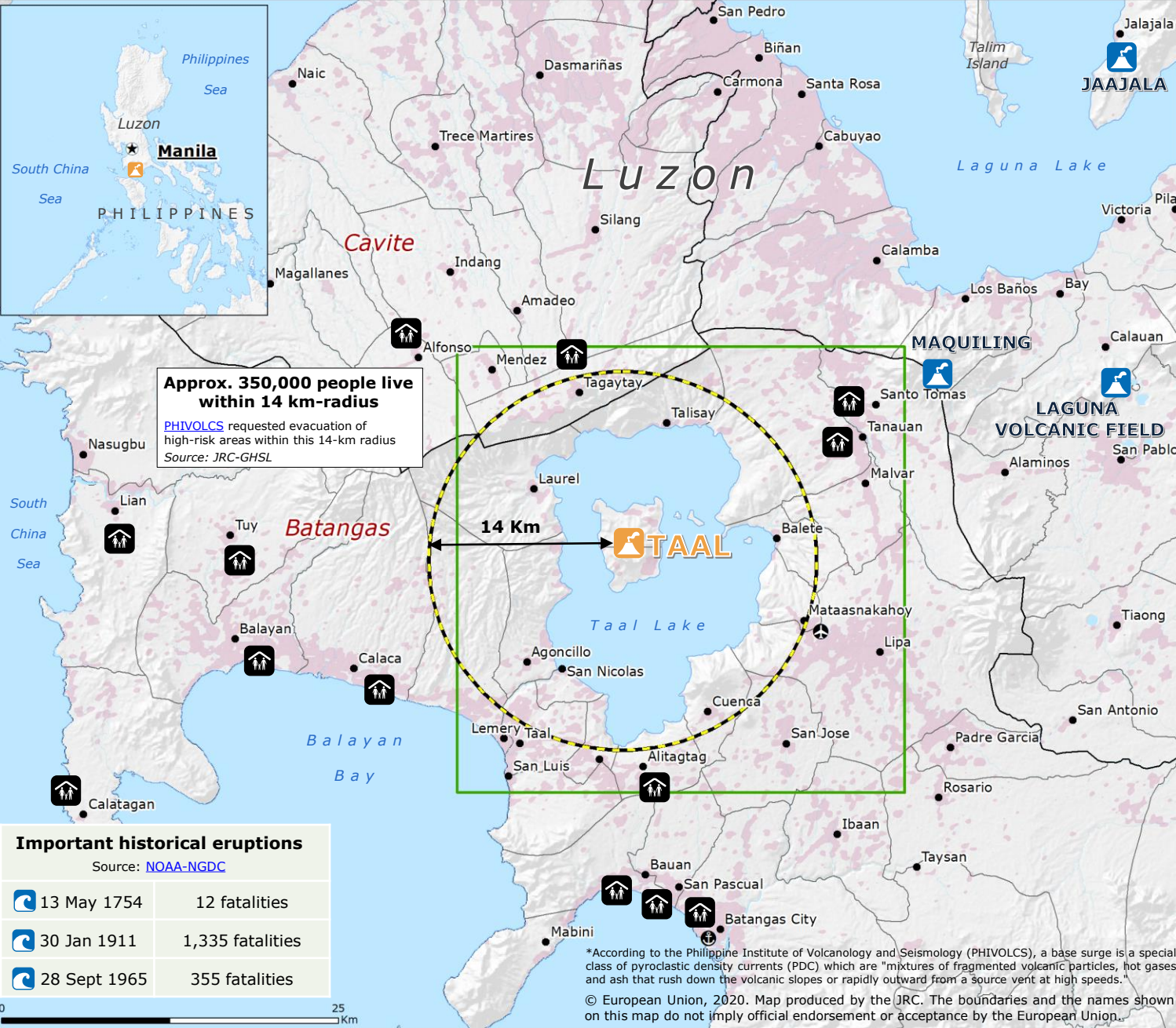


Philippines | Taal volcano

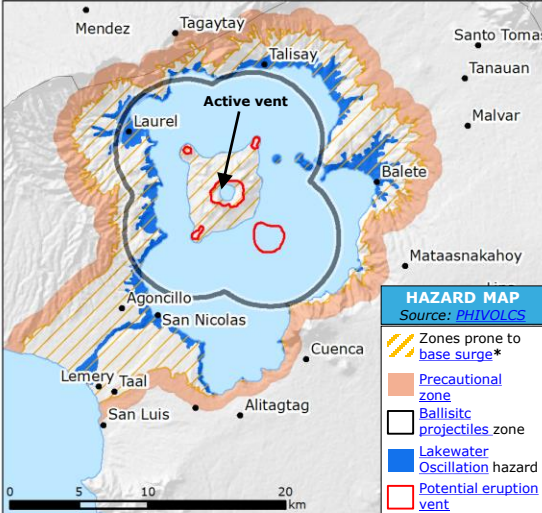


| | |
|--|---------------|
| | 38,203 |
| | 40,752 |
| | 603 |
| | 198 |

Source: [NDRRMC](#)

Important historical eruptions
 Source: [NOAA-NGDC](#)

| | | |
|--|--------------|------------------|
| | 13 May 1754 | 12 fatalities |
| | 30 Jan 1911 | 1,335 fatalities |
| | 28 Sept 1965 | 355 fatalities |



- Taal volcano [GDACS](#) Orange Alert
- Active volcano
- Tsunami triggered by historical eruption
- Evacuation zone
- Copernicus [EMSR418](#) Detection
- Area of interest
- Populated area
- Name* Affected provinces
- Cities and municipalities division
- Province boundary
- Airport
- Port

*According to the Philippine Institute of Volcanology and Seismology (PHIVOLCS), a base surge is a special class of pyroclastic density currents (PDC) which are "mixtures of fragmented volcanic particles, hot gases and ash that rush down the volcanic slopes or rapidly outward from a source vent at high speeds."
 © European Union, 2020. Map produced by the JRC. The boundaries and the names shown on this map do not imply official endorsement or acceptance by the European Union.