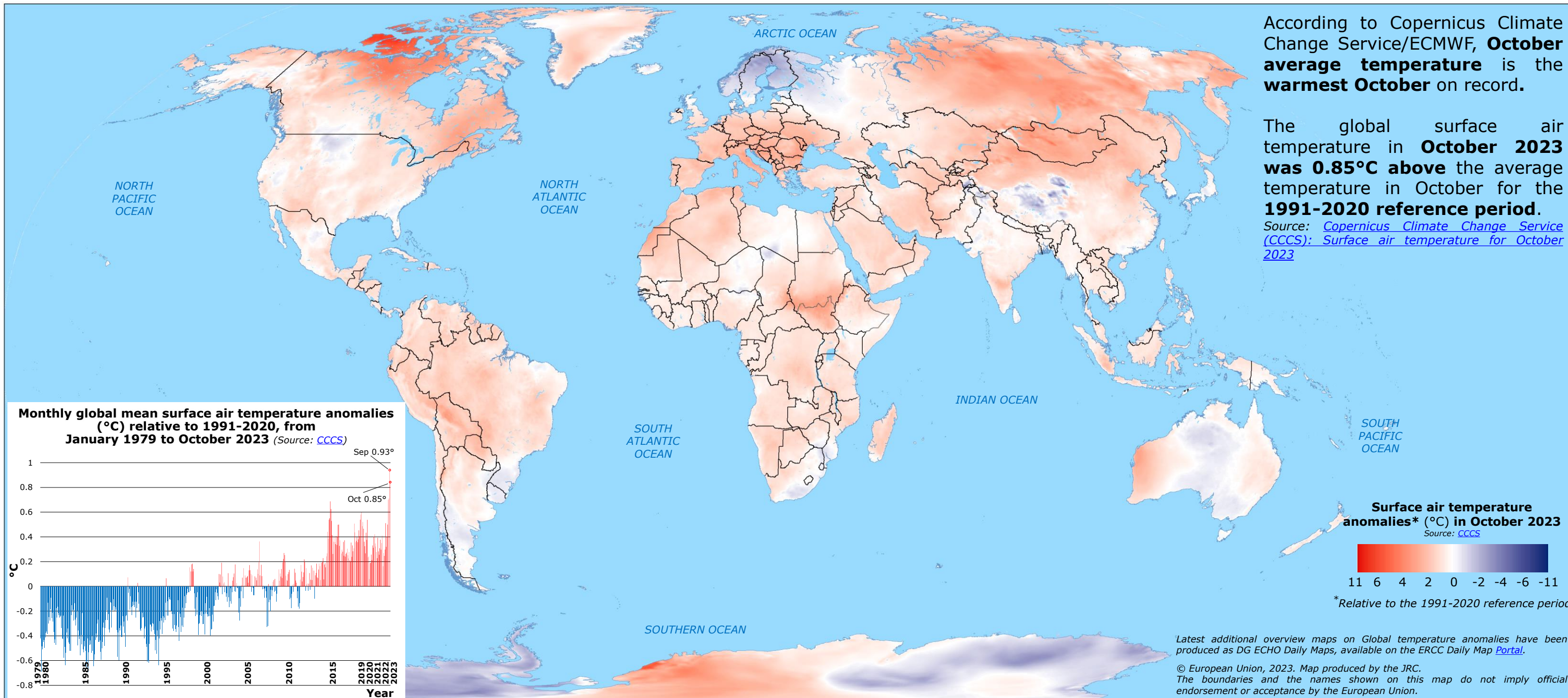


World | Temperature anomalies in October 2023

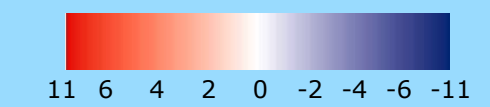
According to Copernicus Climate Change Service/ECMWF, **October average temperature** is the **warmest October** on record.

The global surface air temperature in **October 2023** was **0.85°C above** the average temperature in October for the **1991-2020 reference period**.

Source: [Copernicus Climate Change Service \(CCCS\): Surface air temperature for October 2023](#)



Surface air temperature anomalies* (°C) in October 2023
Source: CCCS

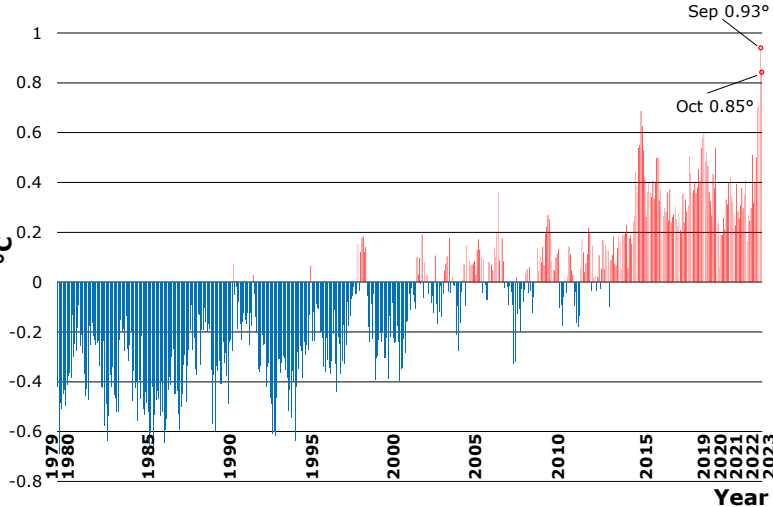


*Relative to the 1991-2020 reference period

Latest additional overview maps on Global temperature anomalies have been produced as DG ECHO Daily Maps, available on the ERCC Daily Map [Portal](#).

© European Union, 2023. Map produced by the JRC. The boundaries and the names shown on this map do not imply official endorsement or acceptance by the European Union.

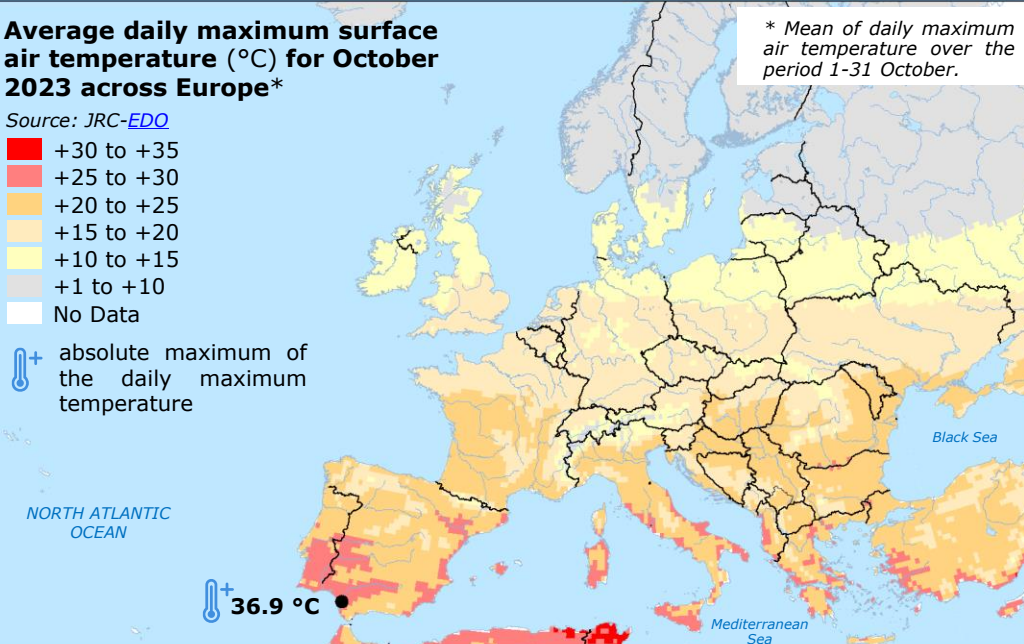
Monthly global mean surface air temperature anomalies (°C) relative to 1991-2020, from January 1979 to October 2023 (Source: CCCS)



Average daily maximum surface air temperature (°C) for October 2023 across Europe*

- Source: JRC-EDO
- +30 to +35
 - +25 to +30
 - +20 to +25
 - +15 to +20
 - +10 to +15
 - +1 to +10
 - No Data

+ absolute maximum of the daily maximum temperature



* Mean of daily maximum air temperature over the period 1-31 October.

Arctic ice coverage in October 2023

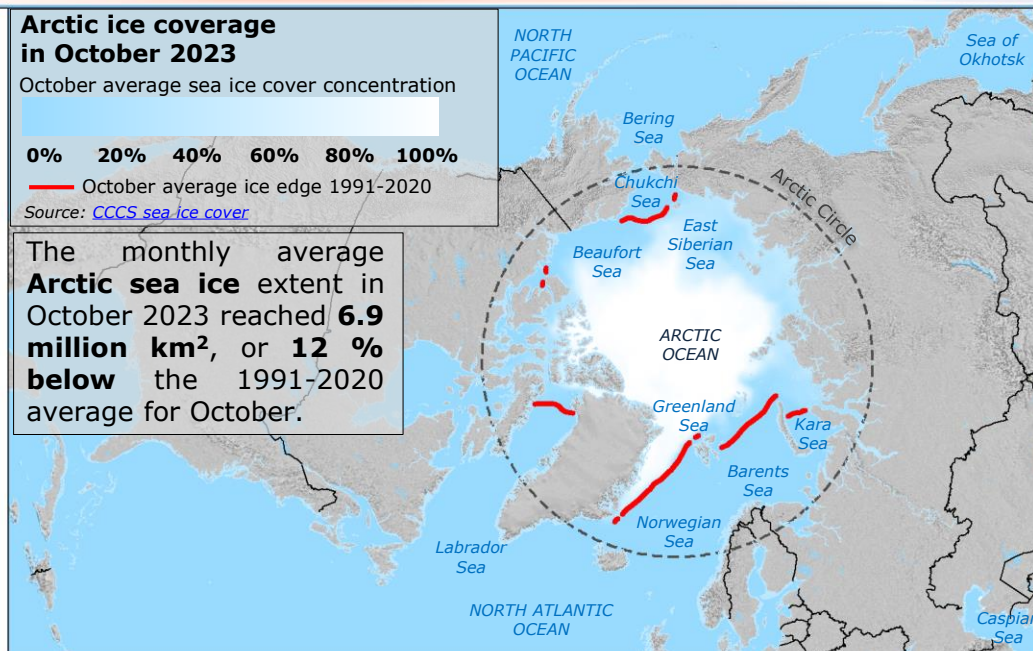
October average sea ice cover concentration

- 0%
- 20%
- 40%
- 60%
- 80%
- 100%

— October average ice edge 1991-2020

Source: [CCCS sea ice cover](#)

The monthly average **Arctic sea ice extent** in October 2023 reached **6.9 million km²**, or **12 % below** the 1991-2020 average for October.



Antarctic ice coverage in October 2023

October average sea ice cover concentration

- 0%
- 20%
- 40%
- 60%
- 80%
- 100%

— October average ice edge 1991-2020

Source: [CCCS sea ice cover](#)

■ Ice shelf in Antarctica

In October 2023, the **Antarctic sea ice extent** reached **2 million km²** on average, or **11% below** the 1991-2020 average for October.

