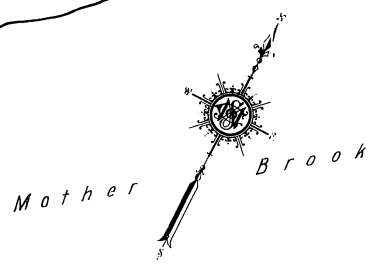
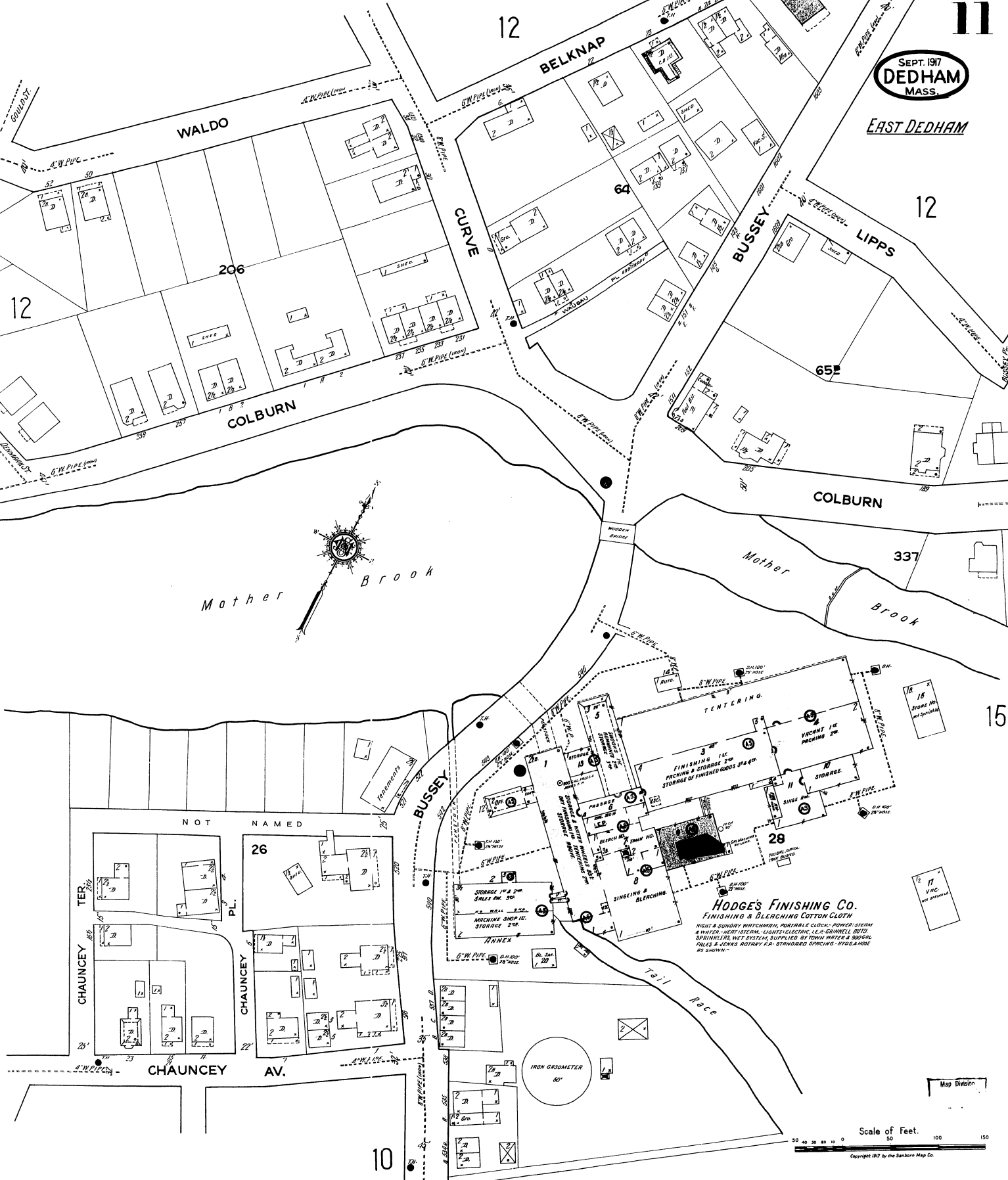


SEPT. 1917
DEDHAM
MASS.

EAST DEDHAM



HODGE'S FINISHING CO.
FINISHING & BLEACHING COTTON CLOTH

WIGHT & SUNDAY WATCHMEN, PORTABLE CLOCK, POWER STOM & WATER, HEAT SYSTEM, LEADERS, ELECTRIC, 1 1/2 IN. GUNNELL RIGID SPRINKLERS, WET SYSTEM, SUPPLIED BY TOWN WATER & SEWER DEPT. & LEWIS ROTARY F.A. STANDARD SPINNING - WOODHOUSE AS SHOWN.

Scale of Feet.
0 10 20 30 40 50 60 70 80 90 100 150

Copyright 1917 by the Sanborn Map Co.