

MG-61

5

145
④

Report # 61

IC (4)

AIRCRAFT ACTION REPORT

~~CONFIDENTIAL~~

RESTRICTED
(Reclassify when filled out)

Ref: -VMB-433 107
VMB-443 81
VMB-611 22

I. GENERAL

(a) Unit Reporting MAG-61 (b) Based on or at Enirau Island (c) Report No. 61
 (d) Take off: Date 19 February, 1945 Time (LZT) 0845-0853L (Zone); Lat. 01°36' S Long. 150° E
 (e) Mission Coordinated medium level bombing of Vunakanau # 11, New Britain. (f) Time of Return 1150L (Zone)

II. OWN AIRCRAFT OFFICIALLY COVERED BY THIS REPORT.

TYPE (a)	SQUADRON (b)	NUMBER			BOMBS AND TORPEDOES CARRIED (PER PLANE) (f)	FUZE, SETTING (g)
		TAKING OFF (c)	ENGAGING ENEMY A/C (d)	ATTACKING TARGET (e)		
PBJ-1	VMB433	7	None	6	1 x 2000 GP	AN-M-103 Inst.
PBJ-1	VMB443	6	None	6	1 x 2000 GP	Nose: AN-M-103 Inst Tail: AN-M-102A2 Inst.
PBJ-1	VMB611	9	None	9	3 x 650 D/C	Mk 219 Inst nose.

III. OTHER U. S. OR ALLIED AIRCRAFT EMPLOYED IN THIS OPERATION.

TYPE	SQUADRON	NUMBER	BASE	TYPE	SQUADRON	NUMBER	BASE
PV-1	NZ#8	6	Enirau Island				
PBY-5A	VPB 44	1	same				
P4U	NZ#22	2	same				

IV. ENEMY AIRCRAFT OBSERVED OR ENGAGED (By Own Aircraft Listed in II Only).

(a) TYPE	(b) NO OBSERVED	(c) NO ENGAGING OWN A/C	(d) TIME ENCOUNTERED	(e) LOCATION OF ENCOUNTER	(f) BOMBS, TORPEDOES CARRIED; GUNS OBSERVED	(g) CAMOUFLAGE AND MARKING
None			(ZONE)			
			(ZONE)			
			(ZONE)			

(h) Apparent Enemy Mission(s) _____
 Did Any Part of _____
 (i) Encounter(s) Occur in Clouds? _____ If so, Describe Clouds _____ (BASE IN FEET, TYPE AND TENTHS OF COVER)
 (YES OR NO)
 Time of Day and Brilliance _____ (k) Visibility _____ (MILES)
 (j) of Sun or Moon _____ (NIGHT, BRIGHT MOON; DAY, OVERCAST; ETC.)

V. ENEMY AIRCRAFT DESTROYED OR DAMAGED IN AIR (By Own Aircraft Listed in II Only).

(a) TYPE ENEMY A/C	(b) DESTROYED OR DAMAGED BY:			GUNS USED	(c) WHERE HIT, ANGLE	(d) DAMAGE CLAIMED
	TYPE A/C	SQUADRON	PILOT OR GUNNER			
None						

AIRCRAFT ACTION REPORT ~~CONFIDENTIAL~~

RESTRICTED
(Reclassify when filled out)

(OMIT THIS SHEET IF NO ATTACK WAS MADE)

REPORT No _____

XI. ATTACK ON ENEMY SHIPS OR GROUND OBJECTIVES (By Own Aircraft Listed in II Only).

- (a) Target(s) and Location(s) Kavieng Strip, N.I. (Secondary) (b) Time Over Target(s) 1113-1115L (Zone)
(FOR SHIPS INCLUDE ALL IN AREA UNDER ATTACK)
- (c) Clouds Over Target 7/10 cumulus 8000' base 2000'
(BASE IN FEET, TYPE AND TENTHS OF COVER)
- (d) Visibility of Target Partially obscured by clouds (e) Visibility 15
(CLEAR, HAZY, PARTIALLY OBSCURED BY CLOUDS, ETC.) (MILES)
- (f) Bombing Tactics: Type level Bomb Sight Used Mk 15 mod 7
(LEVEL, GLIDE OR DIVE) (TYPE)
- Bombs Dropped per Run all Spacing _____ Altitude of Bomb Release 11,400-13,000'
(NUMBER) (FEET) (FEET)
- (g) Number of Enemy Aircraft Hit on Ground: Destroyed None Probably Destroyed None Damaged None

(h) AIMING POINT	(i) DIMENSIONS OR TONNAGE	(j) NO. A/C ATTACKING (k) SQUADRON	(l) BOMB AND AMMUNITION EXPENDED EACH AIMING POINT	(m) NO. HITS ON Aiming Point	(n) DAMAGE (None, slight, or destroyed or sunk)
1 <u>Kavieng Strip</u>		<u>6</u> <u>VMB-433</u>	<u>6 x 2000 GP</u>		
2		<u>6</u> <u>VMB-443</u>	<u>6 x 2000 GP</u>		<u>See "0"</u>
3		<u>9</u> <u>VMB-611</u>	<u>27 x 650 D/C</u>		
4					
5					
6					
7					
8					

(o) RESULTS: (For all hits claimed on ship targets and for land targets of special interest, draw diagram, top or side view or both, as appropriate, showing type and location of hits. For all targets give location and effect of hits, and identify by numbers above. Use additional sheets if necessary.)

Glimpses through clouds picked up 6 x 2000 GP's exploding in a field northeast of Chinatown and long 500 feet of the aiming point. Known AA positions are in the vicinity but the bombs did not fall quite near enough to cause damage. 6 more 2000 GP's walked along the southern taxiway, but again not sufficiently close to a reported AA position between the taxiway and the center of the strip which was the aiming point. 23 out of 27 depth charges were seen to be far wide of their target - the town itself - and made splashes while the remaining 4 were unobserved. The D/C's shown on the attached photograph came from the PV's.

(p) Were Photographs Taken? Yes Photographs of Damage, When Taken, Should Be Attached By Staple

AIRCRAFT ACTION REPORT

~~CONFIDENTIAL~~

RESTRICTED
Re-classify when
directed

REPORT NO. _____

XIII. MATERIAL DATA. (Comment freely on performance or suitability, following check list at left. Use additional sheets if necessary).

ARMAMENT

- Guns, Gunsights
- Turrets
- Ammunition
- Bombs, Torpedoes
- Bomb Sights
- Bomb Releases

COMMUNICATIONS

- Radio, Radar
- Homing Devices
- Visual Signals
- Codes, Ciphers

RECOGNITION

- IFF
- Signals
- Battle Lights
- Procedures

PROTECTION

- Armor, Points and Angles of Fire Needing Further Protection
- Leak Proofing

EMERGENCY EQUIPMENT

- Parachutes
- Life Belts, Life Rafts
- Safety Belts
- Emergency Kits
- Rations, First Aid

NAVIGATIONAL EQUIPMENT

- Compasses
- Driftsights
- Octants
- Automatic Pilots
- Charts
- Field Lighting

INSTRUMENTS

- Flight
- Power Plant

OXYGEN SYSTEM

CAMOUFLAGE AND DECEPTION DEVICES

STRUCTURE

- Airframe
- Control Surfaces
- Control System
- Dive Flaps
- Landing Gear
- Heating System
- Flight Characteristics At Various Loadings

POWER PLANT

- Engines
- Engine Accessories
- Propellers
- Lubricating System
- Starters
- Exhaust Dampers

HYDRAULIC SYSTEM

ELECTRICAL SYSTEM

- Auxiliary Plant
- Lights

FUEL SYSTEM

FLIGHT CLOTHING

MAINTENANCE

BASE FACILITIES

- Plane Servicing Equipment
- Personnel Facilities

REPORT PREPARED BY: _____

433		443		611	
CALL	PILOT	CALL	PILOT	CALL	PILOT
266B21	Adams	279B21	Gould	242B21	Maulsby
267B21	Shaw	280B21	Rose	243B21	Lauer
268B21	Leachman	281B21	Lord	244B21	Good
269B21	Wolfe	282B21	Hilbert	245B21	Hoadley
270B21	Hendy	283B21	Christmas	246B21	Chelgren
272B21	Lattner	284B21	Kitterman	247B21	McNamara
274B21	Green			248B21	Padgett
				249B21	Lenasters
				250B21	Woods

Three PBJ squadrons and six PV's of New Zealand #8 were originally scheduled to strike Yunakanau Target #11. However the target was so completely cloud covered that the flight leader decided to hit the secondary target, Kavieng Airfield.

The flight was planned for two groups of two squadrons each, with the second group keeping close behind the leaders. VMB-433 and VMB-611 formed the first group while VMB-443 led the PV's in the second group. The flight followed the scheduled course to Pendo Point, hence east for 24 miles where the first group turned north. On the approach the target area was completely obscured so the leader swung left and headed toward Kavieng.

The flight returned along the south coast of N w Ireland to Selapiu Island where the first Group turned northeast. On a heading of 0420 the bomb run was made at 162 kts and an altitude of 13,000'. Bombs were away at 1113 through 7/10 cloud cover which made observation extremely difficult.

The second group approached the strip farther east and made the bombing run on a heading of 3450 at 11,400' two minutes after the first group. In spite of the cloud difficulties and change of target the formation of two groups was maintained throughout.

One plane of VMB-433 was forced to leave the formation near Djaul Island because of engine trouble. Enroute to base the bomb was dropped over Mane Island. Without a bombsight, it fell in the water short of the aiming point.

No AA fire was reported from Yunakanau or Kavieng but strike photos of the latter area picked up the flash of a fun and clearly established its position as 1000' north of the center of the strip.

D. F. HATCH,
Capt., USMCR,
Group Intelligence Officer.

P. K. SMITH,
Col., USMC,
Group Commander.

APPROVED BY _____

SIGNATURE _____

RANK AND DUTY _____

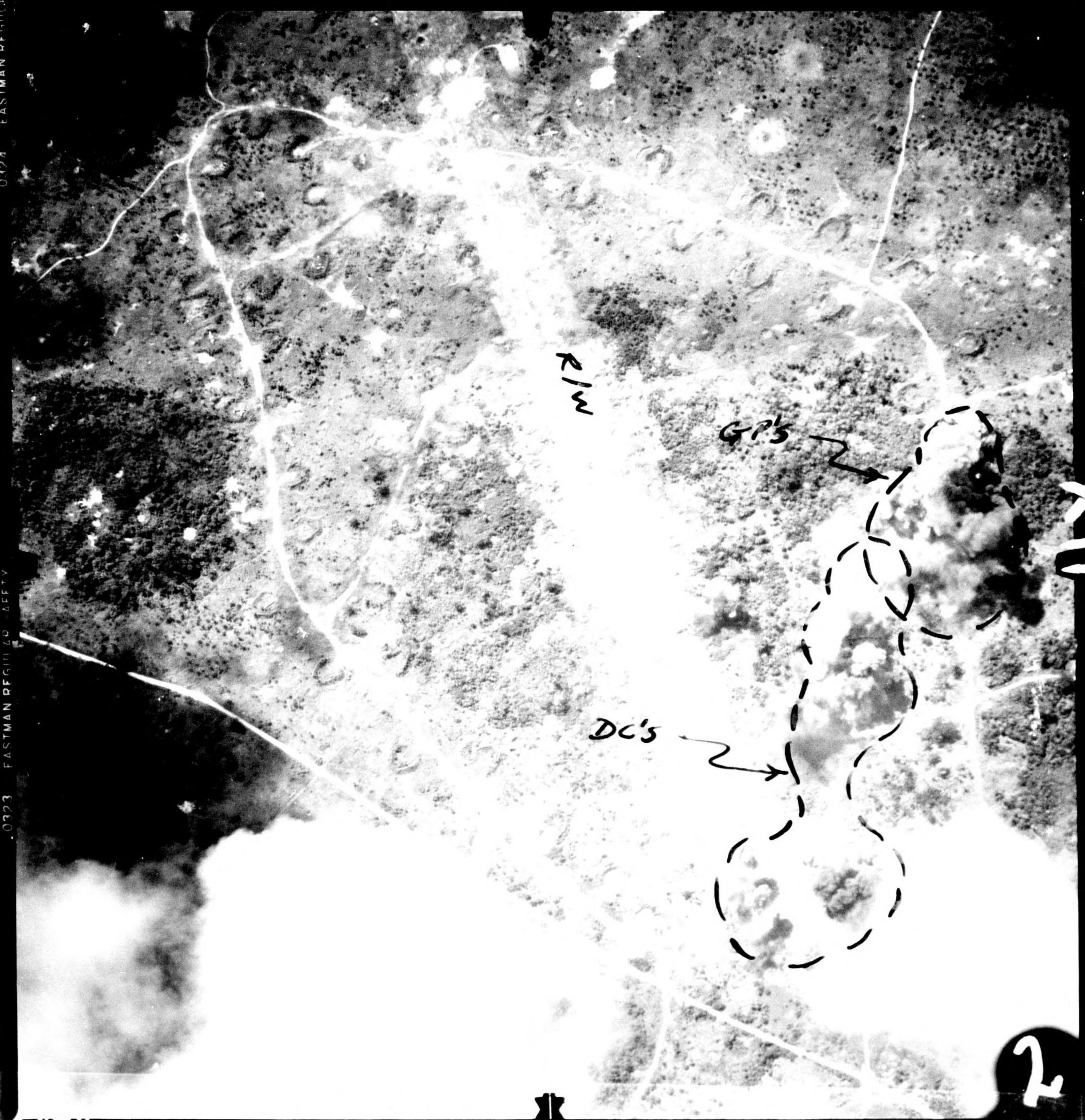
SIGNATURE _____

RANK AND DUTY _____

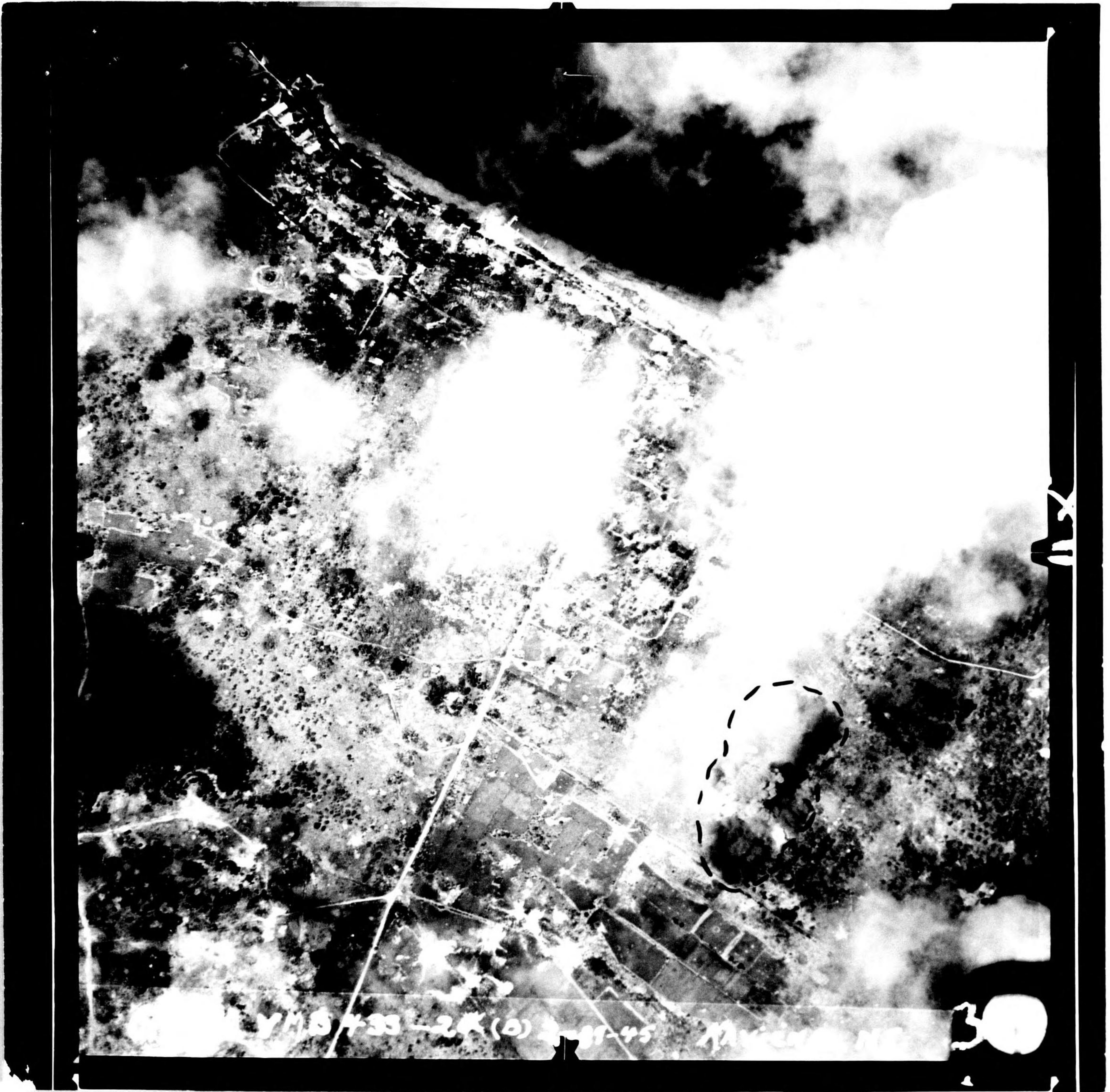
DATE _____

0324 EASTMAN PFGIII

0323 EASTMAN PFGIII 40 SAFETY



VMB443-149 19FEB45 (20") (11500') KAVIENG



YH 433-2K (0) 3-11-45