

MG-41

2

146
④

Report # 88

IIC(4)

CONFIDENTIAL

AIRCRAFT ACTION REPORT

Ref: vol 413 361
433 190
443 124

Form ACA-1
Sheet 1 of 5

I. GENERAL

(a) Unit Reporting 418.61 (b) Based on or at Swain Island (c) Report No. 28
(d) Take off: Date 17 April 1945 Time 0323L Lat 01°36'S Long 150° E
(e) Mission Coordinated medium altitude attack on Rabaul AB, New Britain. (f) Time of Return 1200L

II. OWN AIRCRAFT OFFICIALLY COVERED BY THIS REPORT

TYPE	SQD	NUMBER	TAKING OFF	ENGAGING ENEMY A/C	ATTACKING TARGET	BOMBS AND TORPEDOES CARRIED (per plane)	FUSE SETTING
(a)	(b)	(c)	(d)	(e)	(f)	(g)	(h)
P2L-1	V42-433	6	None	6	6 x 250 GP AL-103	None	AL-103 inst.
P2L-1	V42-433	9	None	9	6 x 250 GP AL-103	None	AL-103 inst.
P2L-1B	V42-443	9	None	9	6 x 250 GP AL-103	None	AL-103 inst.

III. OTHER U. S. OR ALLIED AIRCRAFT EMPLOYED IN THIS OPERATION.

TYPE	SQD	NO.	BASE	TYPE	SQD	NO.	BASE
P2L-1A	V42-44	1	Swain Island				
P2L-1	V42-43	1	Swain Island				
P2L-1	V42-44	1	Swain Island				

IV. ENEMY AIRCRAFT OBSERVED OR ENGAGED (By Own Aircraft Listed in II Only)

(a) TYPE	(b) NO. OBSERVED	(c) No. Engaged Own A/C	(d) Time Encountered	(e) LOCATION OF ENCOUNTER	(f) BOMBS CARRIED	(g) CAMOUFLAGE MARKINGS
None			(zone)			
			(zone)			

(h) Apparent Enemy Mission(s) _____
Did Any Part of E ncounter(s) _____
(i) Occur in Clouds? _____ If so, Describe Clouds _____
Time of Day and (Yes or No) _____ (base in feet, type, tenths cov
(j) Brilliance of S un or Moon _____ (k) Visibility _____
(night, Bright moon; Day, overcast; etc.) (miles)

V. ENEMY AIRCRAFT DESTROYED OR DAMAGED IN AIR (By Own Aircraft Listed in II)

(a) TYPE A/C	(b) Destroyed or Damaged By: Type A/C: SQD	(c) Pilot or Gunner	(d) Guns used	(e) Where hit angle	(f) Damage Claimed
None					

AIRCRAFT ACTION REPORT

Form ACA-1
Sheet 3 of 5

XI. ATTACK ON ENEMY SHIPS OR GROUND OBJECTIVES (By Own Aircraft Listed in II)

Primary: Tobera #24, New Britain P: 1100L
 (a) Target(s) and Location(s) Secondary: Kavieng (b) Time over Target S: 1204L
 Revetment Area.
 (c) Clouds Over Target S: 5/10 cu. at 1400', tops 4000'
P: Scattered cumulus at 2000', tops to 6000'
 (d) Visibility of Target Partially obscured by clouds. (e) Visibility 10
 (f) Bombing Tactics: Type level Bomb Sight Used Mk. 15 mod. 7
S: 11,500'
 Bombs Dropped per Run All Spacing 50' Altitude P: 11,300'
 (g) Number of Enemy Aircraft Hit on Ground None Destroyed None Damaged None

(h)	(i)	(j)	(k)	(l)	(m)	(n)
1	Tobera #24, N.B. 3300'	6	VMB 413	48 x 250 GP		
2	Kavieng	9				
2	Revetment Area, N.I.	9	VMB 433	72 x 250 GP		See "o"
3	Tobera #24, N.B. 3300'	9	VMB 443	72 x 250 GP		
4						
5						
6						
7						
8						

(o) RESULTS: 1.- Clouds covered most of the target and photographs could pick up only an edge of the target, however, interrogation reports:
 40 x 250 GPs hit in target.
 8 x 250 GPs hit 200 yards west of the target.
 2.- 72 x 250 GPs fell in the vicinity of the taxiway north of the middle of the runway for unobserved results.
 3.- Clouds covered most of the target and photographs could pick up only an edge of the target, however, interrogation reports:
 28 x 250 GPs hit in target.
 44 x 250 GPs hit 200 yards west of the target.

(p) Were Photographs Taken? Yes Photographs of Damage, When Taken, Should be attached by staple.

Photographs attached:

(2) (VMB-413 - 677) (O) (20") (11300') (1106L) (17 April 45) (Tobera #24)
 (4) (VMB-433) (112) (V) (20") (11500') (1204L) (17 April 45) (Kavieng)
 (2) (VMB-443) (203) (O) (20") (12300') (1108L) (17 April 45) (Tobera, N.B.)

AIRCRAFT ACTION REPORT

RESTRICTED
(Reclassify when
filled out)

REPORT No. _____

XIII. MATERIAL DATA. (Comment freely on performance or suitability, following check list at left.
Use additional sheets if necessary).

ARMAMENT

Guns, Gunsights
Turrets
Ammunition
Bombs, Torpedoes
Bomb Sights
Bomb Releases

COMMUNICATIONS

Radio, Radar
Homing Devices
Visual Signals
Codes, Ciphers

RECOGNITION

IFF
Signals
Battle Lights
Procedures

PROTECTION

Armor, Points and Angles
of Fire Needing Further
Protection
Leak Proofing

EMERGENCY EQUIPMENT

Parachutes
Life Belts, Life Rafts
Safety Belts
Emergency Kits
Rations, First Aid

NAVIGATIONAL EQUIPMENT

Compasses
Driftsights
Octants
Automatic Pilots
Charts
Field Lighting

INSTRUMENTS

Flight
Power Plant

OXYGEN SYSTEM

CAMOUFLAGE AND DECEPTION DEVICES

STRUCTURE

Airframe
Control Surfaces
Control System
Dive Flaps
Landing Gear
Heating System
Flight Characteristics
At Various Loadings

POWER PLANT

Engines
Engine Accessories
Propellers
Lubricating System
Starters
Exhaust Dampers

HYDRAULIC SYSTEM

ELECTRICAL SYSTEM

Auxiliary Plant
Lights

FUEL SYSTEM

FLIGHT CLOTHING

MAINTENANCE

BASE FACILITIES

Plane Servicing Equipment
Personnel Facilities

REPORT PREPARED BY:

Leaving the formation and crossing New Ireland again, VMR-433 proceeded along the southwest coast to Kavieng. The revetment area between the north taxiway and Kavieng A/S opened up between clouds and was used as extemporaneous target. The squadron headed for it on a run of 296° magnetic, at an altitude of 11,500 feet and 150 kts., I.A.S. Bombs dropped at 1204 and hit as follows: 72 x 250# GPs fell in vicinity of the taxiway north of the middle of Kavieng A/S.

Breaking to the left, the squadron rallied off North Cape and then went back to base landing at 1235.

Meanwhile, the other two PBV squadrons had circled off Kavieng during VMR-433's attack. When that squadron headed back home, VMR-443 and VMR-413 followed and started landing at 1240.

R. R. CRUISE,
Capt., USMC,
Group Intelligence Officer.

P. R. SMITH,
Col. USMC,
Group Commander.

APPROVED BY:

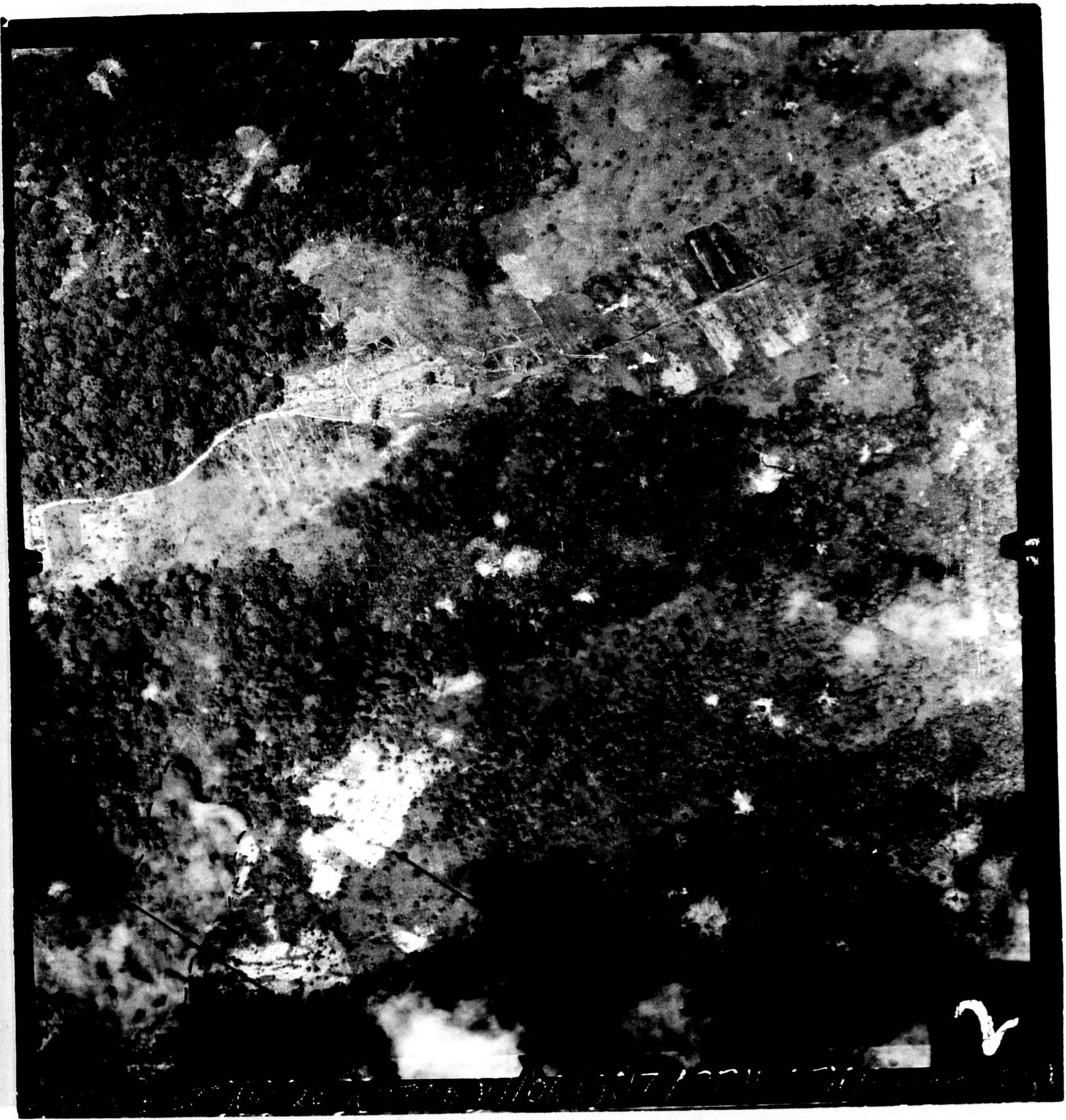
SIGNATURE

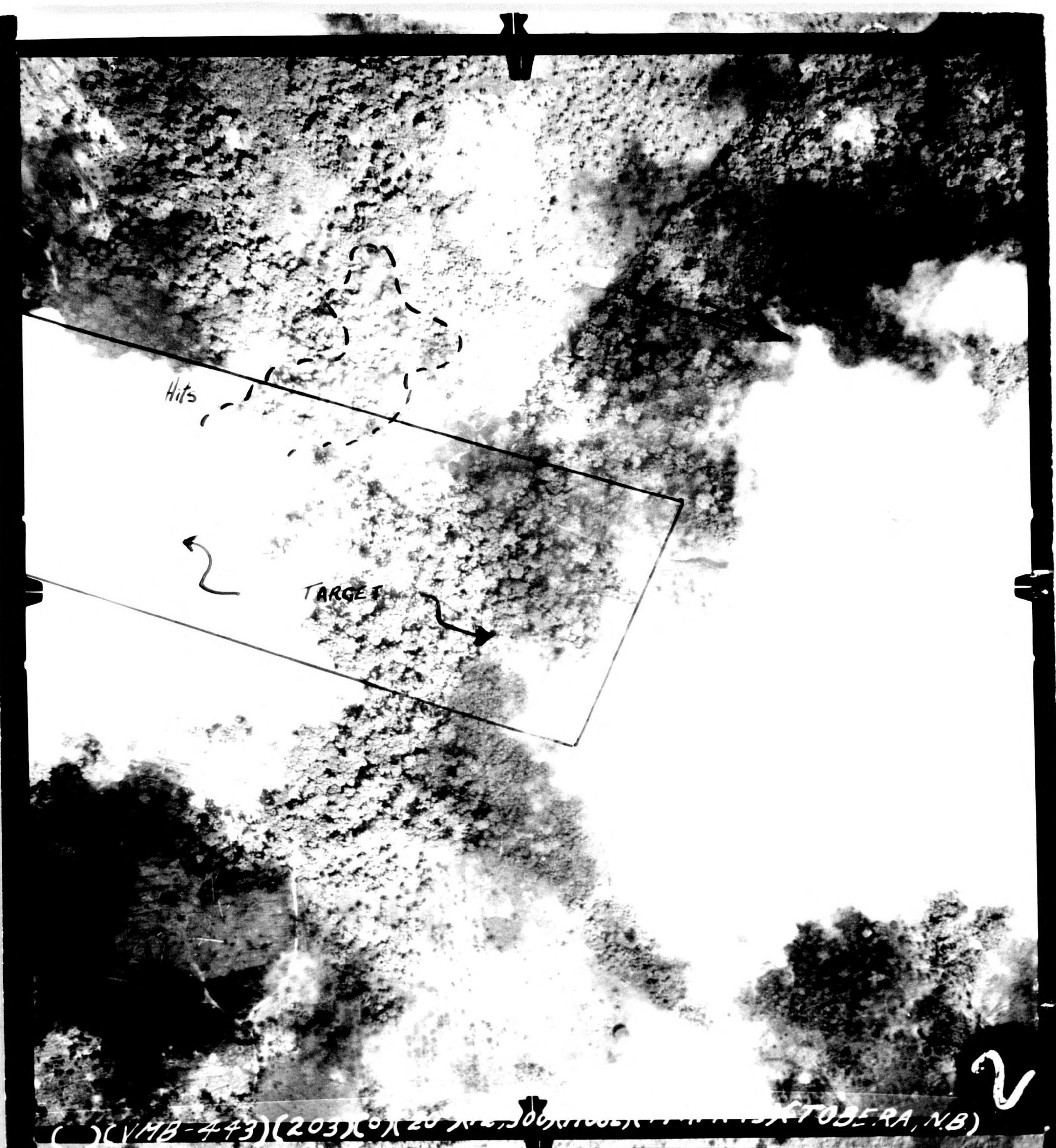
RANK AND DUTY

SIGNATURE

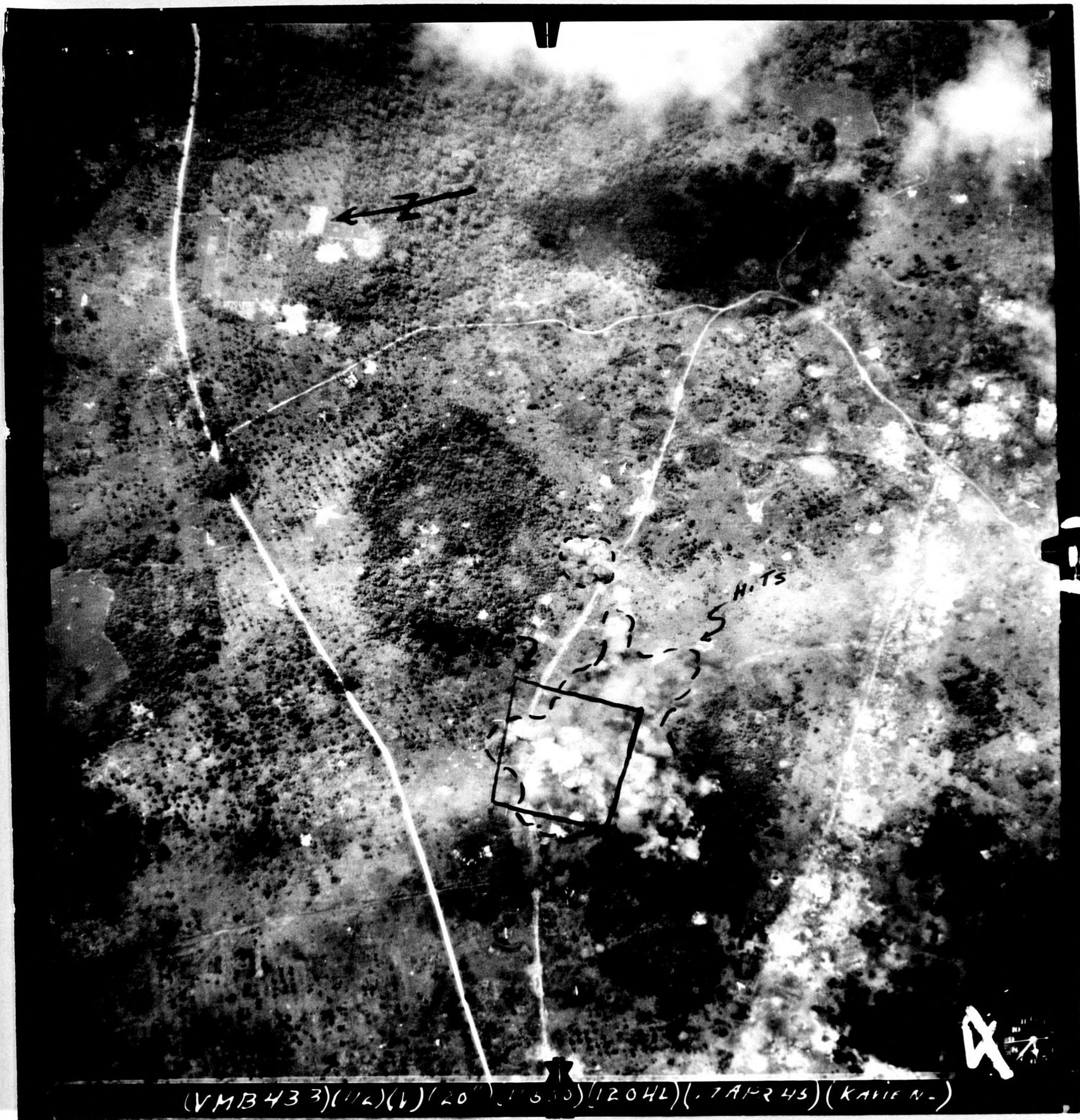
RANK AND DUTY

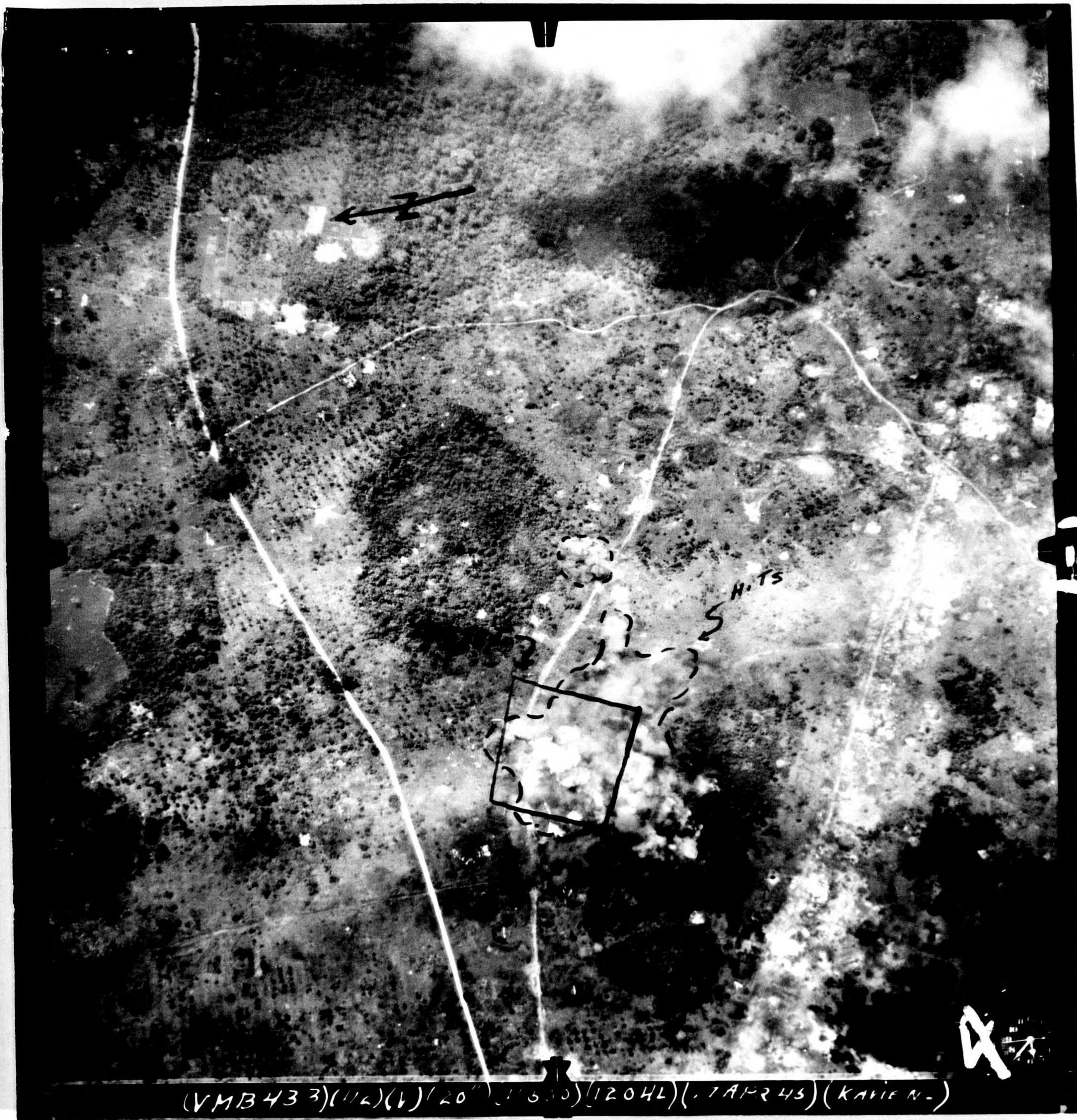
DATE





(CVMB-443)(203)(0)(20 X 2,500,000) (TOBERA, NB)





(VMB 433)(112)(1)/20" (1350)(1204L)(.7 APR 45)(KATIE N.)