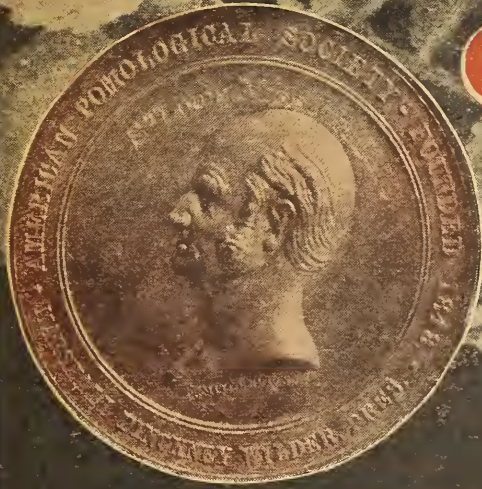


Historic, Archive Document

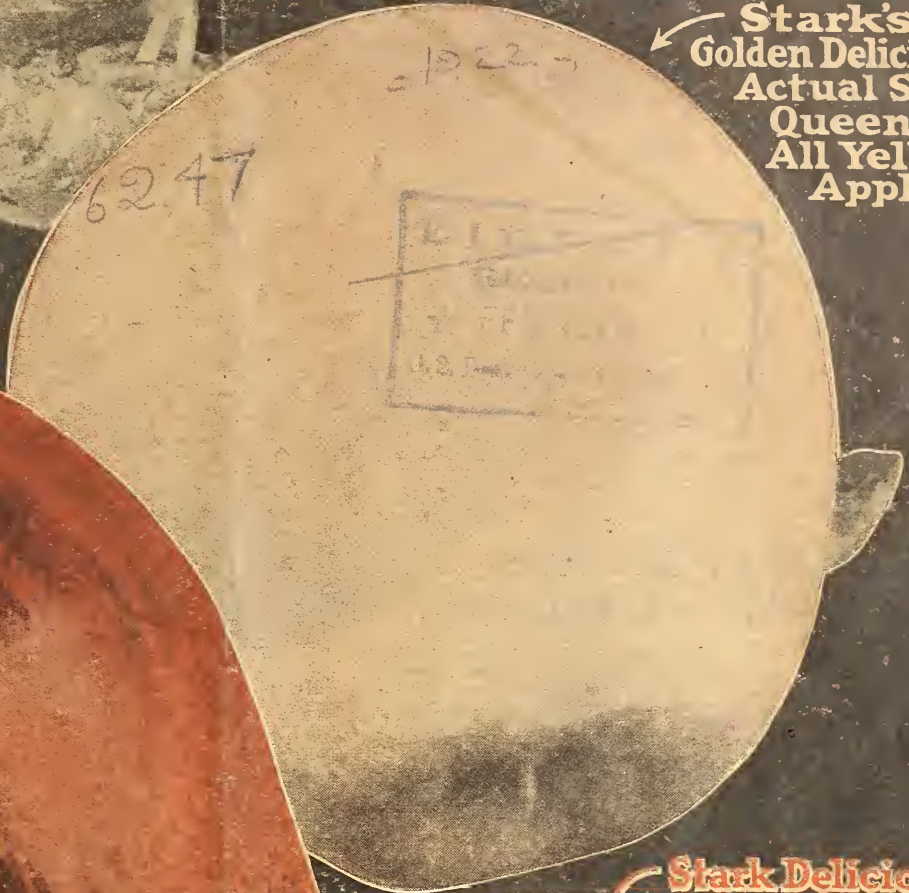
Do not assume content reflects current scientific knowledge, policies, or practices.



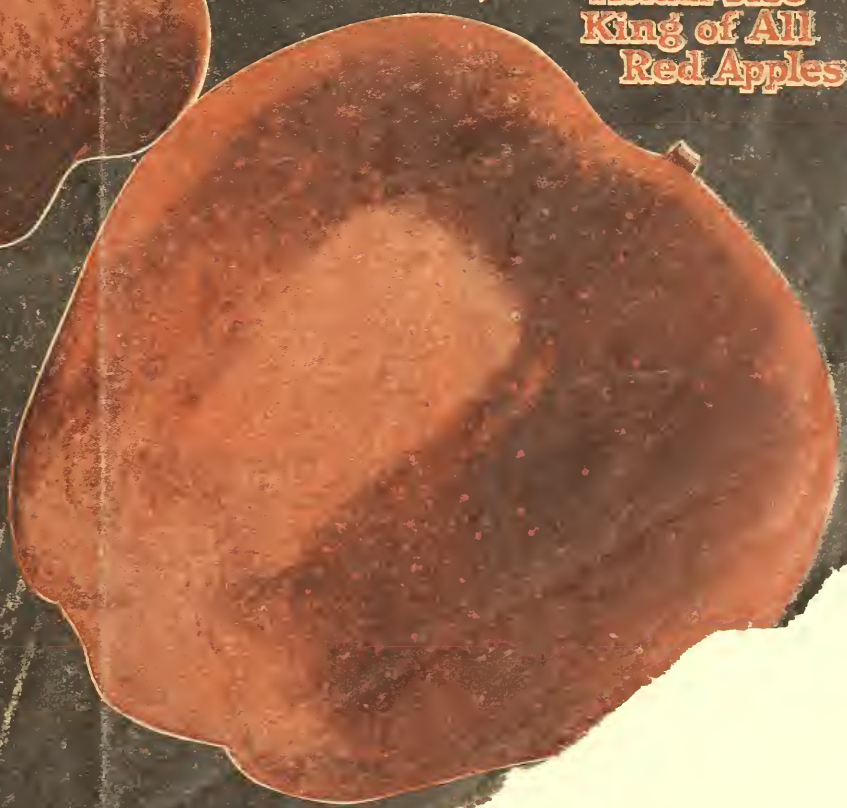
Stark Bro's Champion Fruits



Stark's
Golden Delicious
Actual Size
Queen of
All Yellow
Apples



Stark Delicious
Actual Size
King of All
Red Apples



**Stark's Golden Delicious Awarded
The Wilder Medal (See Medal Above)**
The Wilder Silver Medal is the Nobel Prize of the fruit world. It was provided for by a Trust Fund left in 1886 by the late Marshall P. Wilder, Scientist and Pomologist, who was President of the American Pomological Society for 38 years, with instructions that it was to be awarded to a fruit only after exhaustive investigation had produced proof of that fruit's supreme merit. (See Page 8)

**Stark Bro's
Nurseries,**
at **LOUISIANA, MO.** For Over 106 Years.
Largest in the World - Oldest in America

Stark's Golden Delicious

"This Apple Tree Will Revolutionize Apple Growing—"

That was the remark Prof. H. L. Crane, Horticulturist,

West Virginia Experiment Station, Morgantown, W. Va., made, when he was here with the great party of Horticulturists, Scientific Orchardists, Pomological Professors, Horticultural Text Book Authors and Commercial Apple Growers.

They all came—some of them thousands of miles—to see Stark's Golden Delicious Apple Trees in bearing. (See full account of this trip on page 6.)

**Introduced by Stark Bro's
—now Planted by over 38,000 Growers**

The successful growers in the country immediately saw the big profits in growing this superior apple. The apple buyers urgently advised them to do so—and assured them a high-price market for their Stark's Golden Delicious crops. No tree in our list is in as great demand among "knowing" growers.

For instance, G. J. Hopkins, Famous Fruit Grower, bought 500 of these trees.

Within a month he wrote, "Never saw such clean, healthy, well-rooted trees as Stark's Golden Delicious. Wish now I had bought 1,500 instead of 500. Could you supply that many more now?"—Garland J. Hopkins, Prop., Garland Orchards, Troutville, Va.

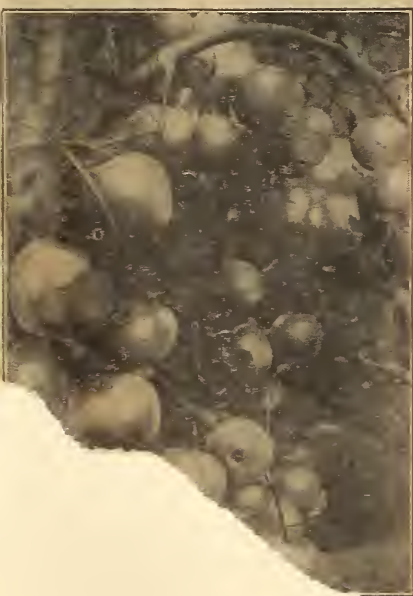
Actual photo of Missouri Stark's Golden Delicious Bearing Heavy Crop of Mammoth Golden Fruit.

Bore This Year Despite 3 Frosts and 2 Freezes

There were three hard frosts and two killing freezes in the late Spring of 1921. They swept through many states just after an extra warm March and April had brought forth the tender fruit blooms. It was the worst spring for fruit in the memory of the oldest inhabitants. But—Stark's Golden Delicious trees bore

anyway. The reason is that these trees put forth three different blooms. First—the bloom of the ordinary fruit spurs. Next, the lateral bloom-buds. And then, the terminal bloom-buds. Two sets of blooms can be killed by the frost—and the third mentioned set will still produce an abundance of fruit.

Look at This Tree Loaded with Golden Apples



(See photo in lower left hand corner.) A Stark's Golden Delicious tree that bore big crop in 1921. This photo was taken when apples only 1-3 grown on July 15, 1921—it being this year's crop—the 6th successive crop since it began bearing.

The apples on July 15, when every other apple tree in the neighborhood in which the tree is located was practically without a single apple, were as big as your fist! The tree blossoms extremely late (a valuable Stark's Golden Delicious tree characteristic)—and the 3 severe frosts and 2 hard freezes (down to 16 degrees) failed to stop the prolific bearing qualities of this tree.

Bore This Year in Blizzardy Iowa

Iowa's winters are usually hard on fruit trees. This last Spring, however, was extra warm, followed later by fearful frosts and freezes. Nevertheless, D. Armentrout, DeWitt, Iowa, writes us: "My 2-year-old Stark's Golden Delicious tree bore 13 apples this year, going through the terrific freezes and frosts of last May, which killed all my crop prospects on all my other fruit trees."

It Bore in 30 Different States This Year, Too

We had crops of Stark's Golden Delicious here in our test-orchards this past year (1921)—and so had growers in Kentucky, Iowa, Ala., Ark., Calif.,

Mass., Ohio, Ill., Wash., Ore., N. Y., N. J., Ida., So. Car., Me., Okla., Tenn., W. Va., Wis., Neb., Nor. Car., Miss., N. C., Arizona and Canada,

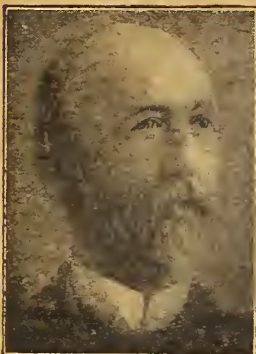


The \$5,000.00 Tree in a Cage

Stark Delicious

"The Finest Red Apple in All The World!"

"**S**TARK DELICIOUS trees from your nurseries have been growing on my place for years and never failed to produce a crop," writes Luther Burbank, the Wizard of Horticulture. "As the trees grow larger they bear more, larger, better fruit. The Stark Delicious is correctly named. No other apple has the delicious combination of the spicy fragrance and flavor of Stark Delicious. Furthermore, it keeps longer than any other good apple. It is the finest red apple in all the world!" —Luther Burbank.



Clarence M. Stark for many years President of Stark Bro's Nurseries & Orchards Co. But for him Stark Delicious would probably have never been known.

Genuine "Original Tree" Strain Stark Delicious trees have been planted by hundreds of thousands in the last 20 years—from one end of the country to the other. It is so popular that a noted artist made

a depiction of Uncle Sam holding forth proudly a princely Stark Delicious—and he entitled his drawing "THE apple of His Eye."

Discovered and Introduced by Stark Bro's

The reason why shrewd orchardists insist on genuine Stark Delicious is because they know that the ORIGINAL TREE of Stark Delicious (see photo at left) was discovered by the late C.M. Stark of Stark Bro's about 30 years ago. He immediately purchased perpetual rights to this ORIGINAL TREE from the owner of the

farm, Jesse Hiatt. We at once secured a registered trademark from the United States Government on the name of this apple and the trees which bear the name of the genuine Stark Delicious.

These wonderful trees have brought fame to our nurseries—and riches to their growers. No other red apple nor red apple tree is so widely popular.

Great, Big, Gleaming Red, Beautiful Apples

The Stark Delicious is a great, big, gleaming red beauty. So attractive and so "good to eat" that it is bought eagerly at city markets at 10, 25 and even 50 cents each!

Its crisp, "crunchy" flesh is blessed with an exquisite, aromatic flavor—and a honey-dew juiciness not found in any other red apple. It tops the markets for the growers—it tops the list of favorites in the opinion of everyone who has ever tasted one.

It is the apple so easily recognized by its beautiful waxen skin of deep crimson, blending off into golden yellow at the blossom end, with its five knob-like protuberances.

Have you ever bit into, with joyous relish, its tender, crisp, fine-grained flesh? If so, you must still be smacking your lips over its deliciously "different" flavor. You must still remember its savory, luscious aroma, with its faint suggestion of sparkling old wine—its indescribable, never-to-be-forgotten tang.

It keeps long into the next spring and early summer—retaining in full its remarkably zestful flavor and snap. As a shipper, it is supreme, and the best storage apple known. A delight as a home apple—a marvelous money-maker as a market apple.

Stark Bro's "Original Tree" Strain of Stark Delicious is Your Guarantee

Your orchard is a lifetime proposition. You don't want to gamble—you must be sure! You want the Genuine ORIGINAL TREE Strain of Stark Delicious—the one that is backed by a record of 50 years of proven hardiness, disease resistance; regular annual bearing, and also biggest

profits wherever apple trees grow. Other apples similar in appearance to the genuine, have been sold to unsuspecting orchardists—but these Bogus, so-called "Delicious" are inferior, poor quality, and as different as black and white from the genuine.

We Alone Control Propagation From Original Tree

Stark Bro's bought perpetual, exclusive and sole propagation rights and control of the Original Stark Delicious Tree, and no other Nursery or person can propagate from this Grand Old Tree, which though 50 years old, has never missed a crop, except one year when all apples failed. Our Genuine ORIGINAL TREE Strain of Stark Delicious propagation is continually renewed and kept close to this original Stark Delicious tree. Stark Bro's exclusive contract for the control and sole propagating rights from this ORIGINAL TREE, is the orchardist's best guarantee of true strain stock, of unquestionable purity, and is the best possible assurance that the characteristics of this magnificent old Patriarch Tree are inherited by our young ORIGINAL TREE Strain of Stark Delicious. This grand old Original Tree still

stands on that bleak, blizzard-swept prairie of Northern Iowa—the only tree out of a large orchard that could withstand the severe 40 degrees below zero weather and the long drouths of summer, and survive. Yet—it has stood all these tests, as well as successfully resisted attacks of insects and disease, un-pruned, uncultivated, un-sprayed, but still producing abundance of rich, healthy foliage and splendid regular crops.

Protect Yourself by Getting "Original Tree" Strain Stark Delicious Trees

You want your young trees to inherit these same hardy, vigorous and heavy annual bearing characteristics. You can get these Original Tree Strain Trees, propagated by our special "close to the Original Tree Method," from no one but Stark Bro's, Louisiana, Mo. "Just as a spring is purest at its source" so the ORIGINAL TREE Strain Stark Delicious is your best assurance of orchard success.

One Concern Sent Superintendent 1,000 Miles to Get 62,000 Genuine Stark Trees

The great Seabrook Farms Co., near Bridgeton, N. J. (a concern having 2,000 acres in truck garden), has planted a 2,000-acre orchard to fruit trees. These total 62,000 Stark Trees, including a block of 11,000 Genuine ORIGINAL TREE Strain Stark Delicious and 2,500 Stark's Golden Delicious trees. Before they decided on just which trees they would invest in, their Superintendent inspected practically every nursery and every orchard section in America. As soon as he saw our Stark mountain-grown trees and saw the results we get through our Propagating Secrets of 106 years' Tree Experience, he decided to buy STARK TREES.



A 9-year-old Stark Delicious tree in 11-acre orchard of Harry C. Carroll, Clarksville, Mo., bearing 18 bushels top price apples. One year's crop alone brought him \$3,000.00.



Photo of Jesse Hiatt and Original Stark Delicious Tree (exclusive and perpetual propagation rights owned by Stark Bro's)—now close onto 6 Half Century old, but still bearing splendid crops—the hole and healthy "Father" of all Genuine ORIGINAL TREE Strain Stark Delicious Trees.



Burgess Gets \$1,500.00 from 36 Stark Delicious Trees

(Photo above shows one of the 3-year Burgess-Trees)

Stark Bro's, at Louisiana, Mo.

Gentlemen:—I have 36 Stark Delicious Trees (all Stark Trees). Began bearing 3rd year, and have borne every year since. This year averaged 15 boxes per tree. Returns from these 36 trees will not be less than \$1,500.00. Sold 350 boxes for \$3.20 per bushel box. —F. S. Burgess, Chelan Co., Wash.

Stark's Golden Delicious Average Size

"Finest, Showiest Apple Big Buyers Ever Saw!"



A. Johnson and his wife standing beside Stark's Golden Delicious Tree bearing big 1921 crop. He received \$13,000.00 for his 1921 apple crop from 40 acres—and refused \$40,000.00 for his orchard.



Stark's Golden Delicious in Our Test Orchards Bearing Good Crops

Here is a 6-year-old Stark's Golden Delicious. It is one of the hundreds that we set out in our test orchards during the many years we tried out Stark's Golden Delicious before offering any of these trees for sale. This year it was "A bouquet of apples"—after it had gone through 3 frosts and 2 freezes last Spring. It is another example to prove the truth of the statement "every Stark's Golden Delicious tree has as many lives as a cat," which was originally said by one of our oldest Test Orchard Inspectors, a man who knows trees as well as a bee knows honey.

Declares Owner of the Famous 750 Acre Wilson Orchards

Silas Wilson, the famous Iowa-Idaho orchardist (whose photo is printed at bottom of this page) who has 750 acres of orchards, recently visited us and said:—"My judgment of this wonderful Stark's Golden Delicious apple and tree is endorsed by all the big Eastern fruit buyers who visited my orchard. They all say it is the finest and showiest apple they ever saw. Furthermore the tree is as hardy as Stark Delicious and Wealthy. It sets an apple for every blossom. I grewevery apple that set to maturity. And the apples cling fast to the tree." Mr. Wilson is a real, practical orchardist, for

It Took 150 Cars to Carry this Man's Apples to Market

He is the type of alert, up-to-the-minute fruit-grower who is planting Stark's Golden Delicious and Stark Delicious. He is planning for the BIG future profits. The B. G. Pratt Orchard Co. of New Jersey (600 acres) ORDERED 5,000 MORE STARK'S GOLDEN DELICIOUS trees after planting 500 last year. This Company is owned by leading orchard men who have large commercial orchards in many parts of the U. S. They are making 100-acre planting of Golden Delicious because they have investigated and believe that this is the most profitable yellow apple they can plant, on account of its tremendous annual bearing ability, late keeping and high quality.

The most noted Pomologists and Experiment Station Experts think this is a wise move. Note:—"I regard Stark's Golden Delicious as the grandest advance in the line of fruits that was ever made. Its favorable characteristics are vigor—so strong as to resist the check of remarkably young bearing. Size, shape and quality are also in its favor," says Mr. E. Riehl, the well known Illinois authority. J. H. Gourley, Chief Ohio Agr. Exper. Station, Wooster, Ohio, writes:—"The behavior of Stark's Golden Delicious is phenomenal. Seldom does a variety have so many superior qualities."

Genuine STARK TREES Make Poor Men Rich! From \$3,000 at 65 to \$40,000.00 when 86!

A. Johnson of Kansas City, Mo. (see photo at left) broke down in health and retired from the grocery business, with only \$3,000 "to his name"—at 65 years of age. He secured a little "patch" of rough land at a low price—and then cleared it himself, all alone. He wrote us about what kind of an orchard to "put out." We told him what varieties of fruit trees to plant—and how to care for them. He says that at that time he "didn't know an apple tree from a peach." Today—21 years later—Mr. Johnson is the owner of as fine a 40-acre orchard as anyone can boast. His is one of the "show orchards" of the famous Rogue River Valley Orchard District. HIS GROSS INCOME FROM HIS 40 ACRES OF STARK TREES IN 1921 ALONE WAS \$13,000.00 He recently refused \$40,000.00 cash for this 40-acre orchard tract. At 86 years of age he is in sound health and financially independent. We say that it was his grit that enabled him to do all this. He says, "It was Stark Trees—and Stark Bro's orchard advice."

Why Stark's Golden Delicious Bears Such BIG Crops

Study the photo of a branch of Stark's Golden Delicious shown immediately below—the one in colors. This is only a small part of the fourth successive crop of Stark's Golden Delicious apples on one tree. The apples group almost as close as gooseberries. However, because they have long, tough stems they develop into extra size apples at time of maturity.

SILAS WILSON Iowa-Idaho Apple Grower



As Silas Wilson says (see statement above) that "every blossom sets an apple"—and nature provides the long, tough stem so that you will gather an extra big crop of extra big apples. No other yellow apple has exactly this characteristic.



"A Genuine Stark Delicious Tree Would be Cheap at \$5.00 Compared to these 'Cheap' Trees!"

Houser & Sutton
Big Indiana Fruit Growers

"They would be bargains at \$5.00 each compared to those other trees as a gift!" declared Mr. Sutton, of Houser & Sutton, owners of a 7,000-Stark-Tree orchard near Newton, Ill. "Last spring I was induced to buy 800 trees (not Stark Trees) because of a so-called bargain price. When they came I had to throw away about 400 as worthless.

"I received a shipment of Stark Trees about the same time. So I planted the best of the cheap trees between the Stark Trees.

"Note the difference! Photo No. 1 (at right) shows a Stark Delicious (from your nursery) only one year and three months after planting. Photo No. 2 (at right) shows one of the cheap trees that was planted at the same time!

"Why—to make the difference even more marked—look at Photo No. 3 (at right). That's a Stark Tree planted only three months ago. Even it has grown much higher than the cheap tree planted 15 months before! That's why I say that a Stark Delicious Tree is cheap at \$5.00 compared to those other trees as a gift."

Genuine Stark Delicious Bear In Indiana Despite Heaviest Frost Known

The Louisville Evening Post, Louisville, Ky., recently published this item:
"Charles Schindler, extensive fruit grower of Floyd Co., Indiana, stated yesterday that half his apple crop was saved despite the fearfully severe frosts. The variety which gave him his apples was Stark Delicious. All other varieties of apples on his farm suffered from the late frost. **Stark Delicious escaped damage.** He believes that this variety is the one to withstand the late frosts which occur in Indiana."

Makes Cheap Land Worth \$1,000.00 Acre

G. F. Cadwell and his son from Griggsville, Ill., recently paid a visit to our Louisiana, Mo., headquarters. He comes to us year after year for his trees.

During the last few years they have planted 8,000 Stark Trees. They came to buy approximately 10,000 more trees for their big Illinois orchards, having bought 160 additional acres which they wished to plant to genuine Stark Trees.

As Mr. Cadwell said: "I may be just bare, rundown land now, but when it has a Stark Tree orchard growing on it, I will refuse \$1,000.00 per acre for it. Why, the crops I have taken off in the past several years have totaled over \$2,000.00 per acre. Just last year I got over 10,000 barrels (the net market price of No. 1 apples was \$9.00 to \$15.00 per barrel) from 50 acres of Stark Trees. Just 3 of my Stark Trees alone yielded 63 barrels of No. 1 apples. Why should I sell an orchard like that for \$1,000.00 per acre? I have watched this apple game and I can see that the prospects were never as bright for big money for orchardists as they are right now."

"Enough from One Crop to Pay for the Trees, the Land and All My Labor"

Note the orchard photo at bottom of this page. Observe each branch is bent until it nearly touches the ground under the amazing burden of great big Stark Delicious apples. Then, read this letter from the owner of the orchard, Mr. Horace Rainey, of Maury Co., Tennessee:

"In my 40 years' experience I have never seen a better crop than this. It far surpassed my utmost expectations. I got enough money from this one crop to pay for the trees, the land and for all my labor. This crop was simply grand. I gathered 25 bushels or more per tree from many of these trees. Not one limb was broken although they bent to the ground. The fruit was far above the average in size and color and sold readily at a fancy price. I attribute this bumper crop to the extraordinary health and vigor of Stark trees, not only of the roots but of the foliage. They are now only 15 years old."

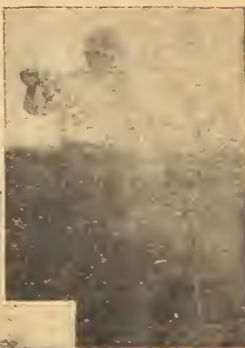


Photo No. 1 (above) shows remarkable growth of Stark Delicious Tree 1 year and 3 mos. after planting.



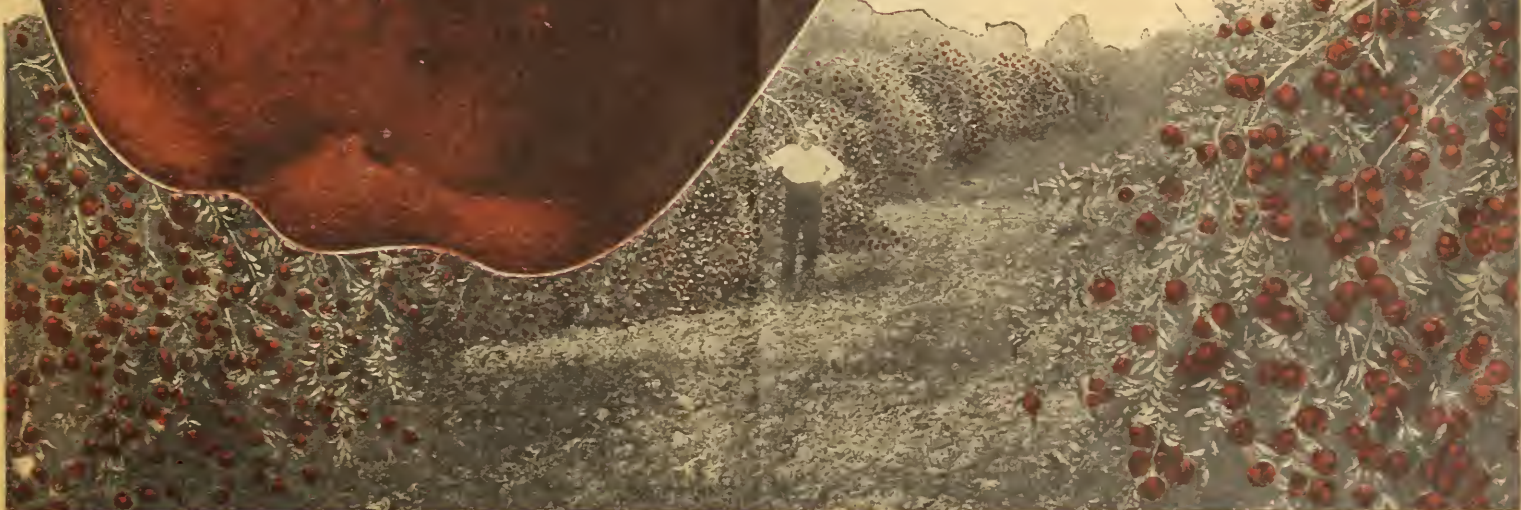
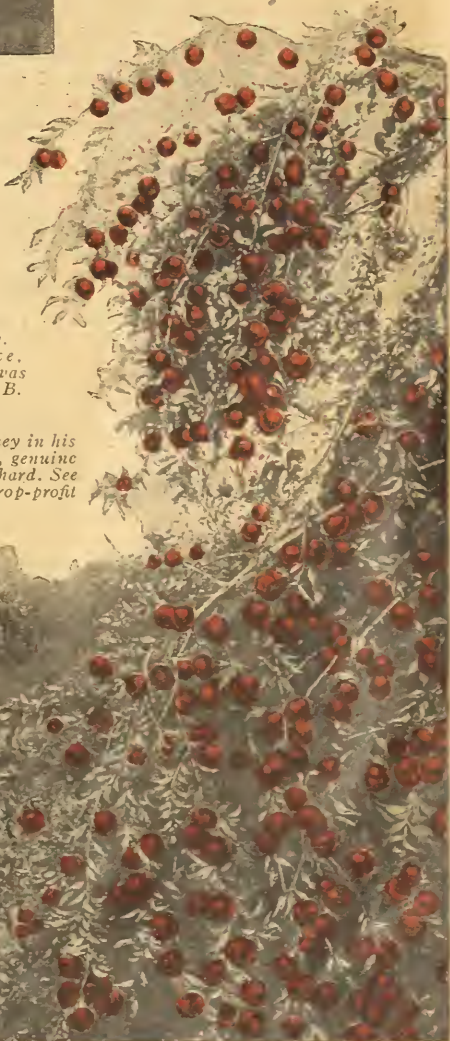
Photo No. 2 (at left) shows another nursery's "cheap" tree, 1 year and 3 months after planting. Note puny, weakling growth.



Photo No. 3 (above) shows a Stark Tree only 3 months after planting. Even this 3 months tree is much bigger than 15 mos. cheap tree.

Stark Delicious as large as the one at left are common. One 13 3/4 in. in circumference, weighing 20 1/2 oz. was raised by A. B. Collum.

Photo of Mr. Rainey in his Maury Co., Tenn., genuine Stark Delicious orchard. See his remarkable crop-profit statement above.



Stark's Golden Delicious Amazes

by Bearing at 2 Yrs. Old in 33 States

STARK'S GOLDEN DELICIOUS trees only 2 years old have the World's Record for early bearing. Not only under favorable circumstances and in good soil, but in 33 different states, from cold, ocean-wind-swept Connecticut to sunny California—from blizzard-bitten Wisconsin to semi-tropical New Mexico—from the garden spots of New Jersey to half-arid Kansas.

It has astonished scientists and horticulturists by bearing excellent crops when 2 years old in Arizona, Missouri, West Virginia, Oklahoma, New York, Texas, Mississippi, California, Iowa, Connecticut, New Mexico, Arkansas, Ohio, New Jersey, Oregon, Alabama, Idaho, Wisconsin, District of Columbia, Louisiana, Washington, Maryland, New Hampshire, Utah, Maine, Kansas, Tennessee, Pennsylvania, Illinois, Kentucky, Virginia, Indiana and Massachusetts.

Enthusiastic reports have poured in upon us from delighted growers everywhere. Read statements under three photos at the right. Everywhere the story is the same.

"My 2-year-old Stark's Golden Delicious bore 14 apples."—H. D. Didier, Roanoke, Va.

"My six 2-year-old Stark's Golden Delicious bore a bushel box of apples this year."—A. Johnson, Ashland, Ore.

"My Stark's Golden Delicious tree, set out 2 years ago this spring, had 24 apples this year."—J. G. Putnam, Everett, Wash.

"The Stark's Golden Delicious I planted 2 years ago bore 6 apples this season."—Dr. W. E. Lawhead, Burlington Iowa.

"There were 9 apples this year (1920) on one Stark's Golden Delicious tree planted spring 1918."—S. P. Hollister, Prof. Pomology, Conn. Agric. College, Storrs, Conn.

Scores upon scores of equally enthusiastic letters from other Golden Delicious growers are in our files. The news of young bearing that they prove excited the curiosity and investigation hankering of all the nation's scientific horticulturists and apple authorities, so much so that—



BORE OVER 100 APPLES AT 27 MONTHS

This photo above was sent in by A. Russell Paul, Belvidere, N. J. Think of a tree bearing 12 apples at 15 months — and over 100 apples at 27 months. He declares it is the "youngest, heaviest bearer of over 150 varieties."



21 APPLES ON 2-YEAR-OLD TREE
J. Günther, Bone Gap, Ill. (photo above)—"My 2-year-old Stark's Golden Delicious tree bore 21 apples this year."

2 YEARS OLD—BORE 128 APPLES
(Photo at left.) Frank L. Wingard, Orange Cove, Calif., writes: "This 2-year-old tree bore 128 Stark's Golden Delicious apples this year."

Noted Horticulturists Journey

Long Distances to See These Trees Bearing

State Horticulturists—Men of Science—Experiment Station Men—State and Government Bureau Men—Horticultural Editors—famous orchardists have come long distances to see Stark's Golden Delicious trees and the remarkable fruit they bear.

Their reports form the most convincing proof of the supreme merit of this "Queen of All Yellow Apples."

Ohio's noted State Horticulturist, Prof. Wendell Paddock, Ohio State University, Columbus, Ohio, visited these trees and reported: "I know now that the young Stark's Golden Delicious come into bearing young and the grafts beat anything I ever saw. I know that the apple is of high quality, beautiful golden yellow color and a late keeper. I look for Stark's Golden Delicious to be the starting point of a new race of apples. Fully one-half of its apples are produced from

lateral buds on last year's wood—very much as a peach produces its fruit."

Prof. H. L. Crane, Horticulturist, W. Va. Exp. Sta., Morgantown, W. Va., came nearly 1,000 miles to see these trees and said: "It is likely that Stark's Golden Delicious will be the parent of a family of apple trees that will make all the old standard varieties back numbers. I am glad to see its strong wood that bore the terrific load of fruit on all branches without breaking."

Prof. F. P. Cullinan, Associate in Pomology, Purdue Univ., Agric. Exp. Sta., LaFayette, Ind., came to inspect these trees and their fruit and declared: "One of the most important points about Stark's Golden Delicious is its late keeping quality."

A typical box of Stark's Golden Delicious (below) from orchards of J. L. Webster Wenatchee, Wash., in perfect condition after 2500 mile trip in ordinary boxes. Mr. Webster got \$5.00 per box for his entire last year's crop.



Basket of J. L. Webster's Stark's Golden Delicious



He declares, "It's a winner because it is a strong grower, heavy bearer, does not drop as do some varieties. Keeping quality equal to old Winesap!"



The photo below shows Prof. Paddock, Ohio State Horticulturist; Prof. Oskamp, Horticulturist of Missouri State Experiment Station; Prof. Cullinan, Associate in Pomology, Purdue University, Indiana; Prof. Crane, West Virginia State Horticulturist, examining tree and fruit. Taken by Prof. W. A. Ruth of University of Illinois, Urbana, Ill., who was one of the party of investigators.



The Banner Cash-Crop-Maker Everywhere!

Stark Delicious Are the "Money Trees" of the Nation's Orchards!

THE outstanding, undeniable fact is that the big orchardists of America are planting nothing but highest-quality trees that will produce only high-quality apples, like Stark Delicious, Stark's Golden Delicious, Stayman Winesap, Stark King David, Jonathan, Double-Life Grimes Golden and similar fine apples. They realize that the finest fruit—the kind that "tops the markets" and that it costs no more to raise the better fruit than to raise the common sort. An article recently printed in the Chicago Tribune showed conclusively that **the grower gets 80 per cent more profit from Stark Delicious than he gets from ordinary apples, of the Ben Davis type, for instance.** And it also proved that it costs the grower as much to raise common apples as it does to grow Stark Delicious!



Mrs. G. J. Hopkins (photo at left) wife of noted Virginia grower, standing beside 5-year-old Stark Delicious tree that bore 3 bushels last season.

They bring \$10.00 per barrel when others bring \$3.50

"I set out, about 12 years ago, Stark Delicious trees that began bearing at 4 years and have been bearing ever since. Some had 2 to 3 barrels on them last year. **They brought me \$10.00 per barrel last year when other apples sold for \$3.50.** The best storage apple I ever saw. Don't scald or decay. The best in the world."—C. W. Greer, Front Royal, Va.

Succeeds in Minnesota

Harold Simmons, the famous Minnesota Horticulturist, writes: "This season Stark Delicious trees bore after 47 degrees below zero. Stark Delicious apples produced here were all sold before Christmas to apple growers. They had plenty of ordinary varieties of winter apples of their own growing, but they had tasted Stark Delicious and were willing to pay more than twice the amount for them than they could get for their own fruit."

\$15.00 a Barrel in N. Y.

E. F. Brontzmann & Son, large orchardists near Binghamton, N. Y., reported to us: "Last year we picked the finest Stark Delicious we ever saw—in size from large to very large. We never ate apples of such fine flavor. We were offered \$15.00 a barrel for our Stark Delicious before we ever picked them."

"I gave one of my Stark Delicious apples to Governor Pennypacker and he was delighted with it."—O. D. Short, Dauphin Co., Pa.

\$1,000.00 per Acre in Neb.

"Have sold \$1,000.00 worth of apples from just one acre of trees—all Stark Trees. Stark Delicious sold at the top price—\$3.50 per bushel in the orchard."—Chas. S. Ludlow, Red Cloud, Neb. And out in Washington, one crop from 36 Stark Delicious trees brought \$1,500.00 to F. S. Burgess, of Chelan County.

Made Missouri Man Rich

W. C. Curd of Saverton, Mo., formerly a city man, bought 10 acres at \$20 an acre. Planted it to Stark Delicious and others of our leading varieties. Three crops off those trees recently brought him over \$84,000. Growing Stark Delicious and other prize-size Stark apples have made him independently well-to-do.

4-Acres Bring \$5,400.00

"My young Stark Delicious orchard produced 6 barrels of apples to the tree (\$1,350.00 per acre). I cleared over \$5,400.00 from Stark Delicious grown on 4 acres of just ordinary land last season."—K. O. Clark, Pike Co., Ill.

\$4.00 per Basket in Md.

"The majority of my trees are Stark Delicious. Last year I could not begin to supply the demand for Stark Delicious apples at our local stores at \$4.00 per bushel basket, while other sorts were hard to sell at \$2.00."—J. P. LeFevre, Cumberland, Md.

5 Successive Crops in Iowa

"My Stark Delicious trees began bearing at about 4 years of age and have had 5 successive crops. The Stark Delicious is rightly named."—J. S. Hixson, Hillsboro, Ia.

Stark Delicious is sweeping ordinary red apples off the markets everywhere. The people who want quality in a red apple aren't satisfied with any apple other than the Stark Delicious—and they are ready and willing to pay the top price to get Stark Delicious.

That is the reason why the shrewd commercial orchardists are planting more and more of Stark Delicious.

That is the reason why the home orchardist prefers to grow Stark Delicious. He knows that he can grow as big and fine and beautiful and as exquisite-flavored Stark Delicious right in his own back yard orchard as the big fellows can in their big orchards—and thus he gets the best apples at little or no cost.

The Photo at left—one of many 6-year-old Stark Delicious trees in C. M. Fette's orchard, Marion Co., Mo. This is its third successive crop!

Photo below shows famous Rose Cliff Orchards, showing over 10,000 6-year-old Stark Trees. Mr. Craig, Mgr., says: "All my Stark Delicious run large. Bear very young and regularly."

20 Bushels on One Tree

Photo at right shows one of big block of Stark Delicious trees owned by Buck Bro's, Elberfeld, Ind. — bearing 20 bushels. Sold for \$12.00 when ordinary apples brought only \$6 — and helped Buck Bro's get \$50,000.00 crop from 40 acres!



3-Year Tree Bearing Big Crop in Fette's Orchard



The "Supreme Court" of the Fruit World

Gives Highest Award in History to

Stark's Golden Delicious



THE WILDER MEDAL

The Wilder Silver Medal is the Nobel Prize of the fruit world. It was provided for by a Trust Fund left in 1886 by the late Marshall P. Wilder, Scientist and Pomologist, who was President of the American Pomological Society for 38 years—with instructions that it was to be awarded to a fruit only after exhaustive investigation had produced proof of that fruit's supreme merit.

WHAT the Supreme Court is to United States law, the American Pomological Society is to American fruit and horticulture—the final, highest authority. This Society has occupied this eminent position for over 75 years. Now—this great body of scientists and horticulturists has given to Stark's Golden Delicious the highest tribute ever granted to an apple since the introduction of Stark Delicious—the only Wilder Silver Medal ever awarded to an apple in the last 35 years. This Medal was "struck off" on the massive presses of the United States Mint, by special order, and is now in our possession. (See photo at left.)

What American Pomological Society Award Means To You

To you who may have been waiting to see Stark's Golden Delicious "prove itself," here is the evidence of the esteem in which this superb fruit, and the tree that bears it, is held by the foremost pomological experts, horticulturists and orchardist.

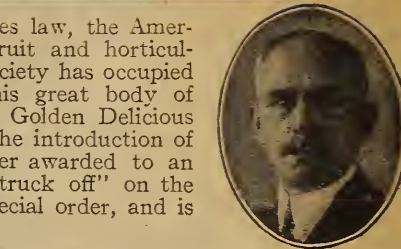
They watched the development, testing and success of this great, big, glowing golden apple for many years before giving it this, the supreme honor.

On the Committee on the Wilder Medal Award were such eminently conservative authorities as: Prof. C. P. Close, Official Pomologist, U. S. Dept. of Agric., Washington, D. C.; Prof. W. J. Green, State Horticulturist, Ohio Exper. Sta., Wooster, Ohio; Prof. N. E. Hansen, State Horticulturist, N. D. Exper. Sta., Brookings, N. D. (see photos at right).

Gathered with these men and concurring in their unanimous verdict in favor of Stark's Golden Delicious, were such noted figures as Dr. Liberty H. Bailey, Dean of New York College of Agriculture, Cornell University, and author of the world famous Standard Encyclopaedia of American Horticulture—and horticulturists and fruit experts from practically every Horticultural College and Experiment Station.

**Only Stark Bro's Can Sell Golden Delicious—
Every Tree Everywhere Legally Protected—
National Detective Service—\$100 Reward!**

Only Stark Bro's can sell Golden Delicious. Stark Bro's own the ORIGINAL Golden Delicious tree and ground. From this splendid old "Mother Tree" Stark Bro's have produced hundreds of thousands of Golden Delicious trees. All trees, buds, scions or cuttings, are fully and legally protected and controlled by Contracts. Anyone who infringes by attempting to sell Golden Delicious trees under its true name or any name, will be promptly and effectively handled in the courts. A few cases



Prof. C. P. Close, Official U. S. Pomologist



Prof. N. E. Hansen, Ncr. Dak. State Horticulturist



Prof. W. J. Green, Ohio State Horticulturist

of attempted infringement by nurserymen have been quickly handled by court action or by the infringer agreeing to burn all trees, etc., and agreeing to stop infringing. Reliable nurseries will not infringe, and others who do not respect our rights will be prosecuted.

All Nurserymen Were Officially Warned of our Legal Rights through U. S. Postal Dept., Registry Division, so none could innocently infringe. We retain Services of leading National Detective Agency to protect our rights and our customer's rights. If you hear of anyone else trying to sell trees, claimed to be Golden Delicious, notify us at once so we can notify our Detective Agency and Legal Department to take necessary action.

\$100 Reward! For the arrest and conviction of anyone stealing Golden Delicious trees, scions, buds or cuttings, and propagating therewith.

We Are Planting These Trees in All Our Own Big Orchards

Two years ago, Major Lloyd Stark and Paul Stark set out two big orchards, as a personal investment. They planted one-half of their acreage to Stark's Golden Delicious trees. Of course, they also planted a big lot of Stark Delicious, Black Ben, Double-Life Grimes Golden, Stark King David and Jonathans. But, the chief planting was Stark's Golden Delicious.

All our big orchard plantings for the last 3 years have been largely Stark's Golden Delicious and Stark Delicious because we know that these are the two big orchard-profit-makers of the future.

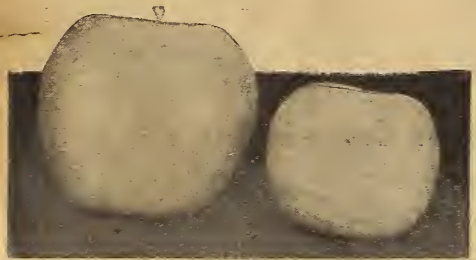
Thousands of commercial orchardists also recognize this truth. This was demonstrated last season, when our great stock of Stark's Golden Delicious was

Completely Sold Out in 1920!
Better Order EXTRA EARLY

NOW!

Before March 1st, last season, we were compelled to return orders for Stark's Golden Delicious trees. The orders for these trees came in a perfect flood during November, December, January and February. Hundreds of people sent in their orders too late—after the last lot of Stark's Golden Delicious trees had been shipped out of our packing houses.

Don't make the mistake of delaying your Stark's Golden Delicious tree order. Send in it NOW—and we will reserve your trees and ship them at the right time for planting.



GOLDEN DELICIOUS GRIMES GOLDEN

Stark's Golden Delicious is 50% Larger and Keeps 4 Months Later Than Grimes



Photo shows enormous crop borne by Stark's Golden Delicious this year. The twelfth successive crop of this 16-year-old tree. This year's yield alone netted over 35 bushels of these big glorious apples.



Black Ben

(Trade-Mark—Reg. in U. S. Patent Office)

★ ★
 (Late Winter.) This marvelously beautiful, glowing, deep red apple is one of the many famous fruits, discovered, introduced and distributed by us. We discovered it, an un-named seedling, in the Ozark Mountains of Washington County, Ark., nearly 30 years ago, and it has grown steadily in popularity since the day we first offered it. The fruit is of large size, regular in shape, smooth, solid red, one of the most attractive of all apples and one that commands high prices. The tree is hardy, rugged, bears young, every year, and produces tremendous crops. Superior in every respect to Gano or any other apple of this type. On the market it brings higher prices than Baldwin, Ark. Black, etc., and has proven one of the biggest money-makers. When an apple of the Ben Davis type is wanted, this variety should always be planted. It is an A No. 1 keeper, either in common cellar or cold storage, doesn't scald, and bruises dry up instead of rotting. No apple will stand harder handling or long distance shipping better than Black Ben. Some varieties bear every other year, some bear one heavy crop then a light crop. Some require one kind of soil, others another, but Black Ben planted in any soil, and given half a chance, will bear mortgage-lifting crops year after year.

EATING, COOKING, MARKET. NCS.

10 Black Ben Trees Bore More than 200 Other Trees in Orchard

Judge W. S. Matthews, of Wise Co., Va., writes: "My Black Ben from your Nurseries came to the front as usual. The 10 Black Ben trees bore more than the balance of 210 trees in my entire orchard."

\$1,080 Crop from 5 Acres Black Ben the Dollar Maker

I. M. Macklin, Jay County, Ind., writes: "My Black Ben and Stark King David are doing fine. We have about \$1,080 worth of Black Ben's alone, in one crop off this 5-acre orchard. Sold my Black Ben for from \$2.00 to \$3.50 more per barrel than Ben Davis."

Won \$500.00 Prize

"These 160 8-year-old Black Ben trees from your nursery—on 2 acres bore 1,250 bushel boxes of most beautiful, glowing deep red apples. They won the \$500.00 Prize at the National Apple Show."—Dr. S. P. Green, Pres. Fruita Chamber of Commerce.

"Sells for from \$2.00 to \$3.50 More than Ben Davis"

—per barrel. The best I ever planted," states S. T. Cole (see photo of his orchard below, just above cut of Stark King David), of Arkansas, who has devoted nearly 100 acres to Black Bens exclusively. Black Ben is a Stark Bro's introduction—the apple that has thrown old, tasteless Ben Davis into the discard. We discovered the original tree on Arkansas farm of Mr. Black.

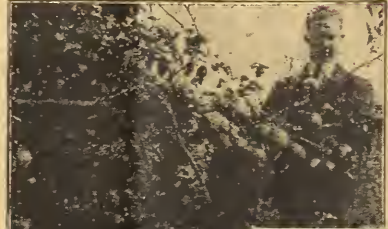
It is far and wide known as "the barrel filler," because of its simply enormous crops.

Not Susceptible to Canker

D. E. Lewis of Kansas City, Manager Central States Orchard Co., with over 1,000 acres of bearing orchards, says, Black Ben tree by far most satisfactory of all the Ben Davis type as it is not susceptible to canker like Ben Davis.

Photo just above cut of King David Apple shows S. T. Cole's 100-acre Arkansas orchard of 6-year-old Black Ben—filled with a great crop.

Black Ben tree (photo right below) 12-year-old bearing 12 bu. in Harry Carroll's orchard, near Clarksville, Mo.



Introduced by Stark Bro's

Mr. Al Bentley examining crop of Black Ben in Farmington, Ark. This 120-acre orchard of Stark Trees brought in \$60,000 this year.

STARK KING DAVID

(Winter.) Youngest, heaviest bearer we have ever seen, except Stark's Golden Delicious. Bore all over the U. S. when all the old standby apples were killed by frost—late bloomer—sure bearer. Averages larger than Jonathan—is a solid deep (almost black) red. Full of spicy, wine-like juice—flesh, rich cream color.

(Trade-Mark—Reg. in U. S. Patent Office)

A fruiting Stark King David tree is a glorious sight. At a distance, it looks like an immense pile of glowing, wine-red apples. The tree is spreading, vigorous and no tree will bear more bushels.

We found this splendid apple many years ago on a trip over a rough Ozark Mountain road—still loaded with gloriously colored apples October 25th, five weeks after Jonathan had fallen. After careful investigation, we bought it. It has made good all over America in both home and commercial orchards. Always commands top prices.

EATING, COOKING, CIDER, MARKET. NCS.

Introduced by Stark Bro's

For a filler tree, no variety is better than Stark King David. B. F. Carroll, Kearney Co., Neb., writes: "Out of 20 varieties, Stark King David is our best seller. It is highly colored, uniform in size, unsurpassed in flavor—better than Jonathan. The tree is an annual bearer, free from blight, forms the finest head and the fruit hangs longer than Jonathan. You cannot overestimate or over push Stark King David."

Frost Resistant

Prof. Ralston, Va. State Horticulturist, writes: "I send you herewith photograph of a Stark King David full of apples, showing its frost resistant qualities, since other varieties near it failed."

12 to 16 Bushels per Tree

"Stark King David was best—bore 12 to 16 bushels per tree"—writes John E. Walters, Newton Co., Ark. "Stark King David is a monarch—the best of all," declares W. H. Scott, Laclède Co., Mo.

5 Year Old Tree Bears 1,540 Apples

The Western Farmer's Review says of the Stephens Idaho Orchard: "The 185-acre Stephens Orchard produced over 10,000 bushels of choicest apples. The Stark King David is the most productive, most vigorous grower."

"One 5-year-old Stark King David bore, 1,540 apples. It is a young, productive bearer."

Frank Moffit, Carmel, Ind., authority, says: "King David has been fruiting here for five or six years and has a way about it of making friends. The tree is a strong grower and a young cropper, while the fruit does not spot."

8 Barrels at \$7.50 per Bbl. on One Young Tree

That's what one of Harry Carroll's Stark King David trees bore for him in his Clarksville, Mo., orchard. Every limb loaded with these big, shining, dark red apples. He has reaped riches from these trees.

"Hardy enough here. Fine color—good quality, no blight," reports F. O. Harrington, Treas. Iowa Hort. Society.

You will never regret adding a block of Stark King David trees to your plantings.



Black Ben Actual Size

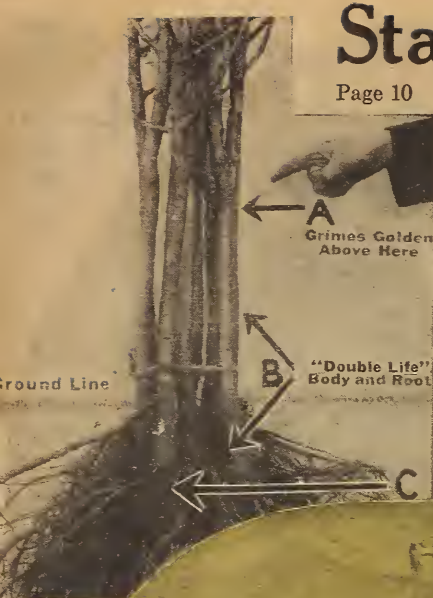


★★ STARK KING DAVID

Introduced by Stark Bro's

Stark's Select Yellow Apple Trees

Page 10



Of course, the apple trees illustrated and described in the forward pages of this little book are those which we recommend the strongest. They are the apple trees which will bring the greatest satisfaction and profit to the average commercial orchardist or home orchard owner. Here, however, are apple trees that many prefer. We can conscientiously recommend them—because we grow them ourselves, in our great chain of **Seven Branch Nurseries**.

APPLE RIPENING SEASONS

In the list below, we arrange the varieties according to the season of ripening—the Earliest Sorts at the Top of the List; the Latest Winter Keepers at the bottom. It makes an easy selection for home orchards that will give fruit practically the year 'round. Varieties starred thus (*) are **HIGHLY RECOMMENDED**. Those with one or more stars (*) and printed in **big type** are

Wonderfully Fine, proved the absolute best of their type and season.

Adaptability—Throughout this book after each description are key letters, showing region where the variety thrives best—N means succeeds North; NN, far North; S, South; C, Central. Hence NCS means succeeds everywhere—North, Central and South.

ORDER OF RIPENING

Early Summer	Summer	Fall	Early Winter
*Henry Clay (Trade-Mark)	*Stark Summer Queen	*Early Melon	N. W. Greening
*Liveland Raspberry	Duchess	*Wealthy	McIntosh Red
*Yellow Transparent	*Wilson Red June	*Imperial Rambo	R. I. Greening
Early Harvest	*Summer Champion	*Buckingham Imp.	
Red June	Maiden Blush	Mother	
Sweet Bough			
	Winter	Late Winter	Late Winter (Cont'd)
	Baldwin	*Senator (Trade-Mark)	*Giant Jeniton (Trade-Mark)
	Northern Spy	York Imperial	**Stark Delicious (Trade-Mark)
	*Banana (Winter Banana)	Mammoth Grimes Golden	**Stark's Golden Delicious (owned and sold only by us)
	Bellflower, Improved	*White Pippin	Willow Twig
	*Double-Life Grimes Golden (Trade-Mark)	*Champion (Trade-Mark)	**Black Ben (Trade-Mark)
	*Jonathan	**Stayman Winesap	
	*Stark King David (Trade-Mark)	*Mammoth Black Twig Imp.	
	Rome Beauty	*Paragon Winesap	
	*Dark Red Rome	**Winesap (Virginia Winesap)	



****Winter.** The famous, spicy Grimes Golden Apple, for over 50 years the Queen of Quality among apples. Medium size, beautiful golden yellow, conical shape. Possesses an alluring flavor that is surpassed or equalled by only one yellow apple—Stark's Golden Delicious. A moderately spreading grower, makes a beautiful orchard tree. The tree trunk, however, is subject to collar rot and is short lived, but the Stark "Double-Life" Process of growing the tree eliminates this fault. This "Double Working" Process, Trade-Marked by Stark Bro's, as conceived and completed here at Louisiana, Mo., injects into Grimes Golden trees the blood of long life—the stamina and roots of a sturdy tree. The increasing vigor results in a Grimes Golden tree that will bear more, bigger and better ap-

ples. And—because it Doubles the Life of the Tree, it more than doubles the profit to the grower, for it adds years to the life of Grimes Golden trees. "Double-Life" Process is Trade-Marked and trees can be sold only by Stark Bro's. EATING, COOKING, CIDER, MARKET. NCS. Trade-Marked and perfected by Stark Bro's.

HOW THEY ARE GROWN
We start with carefully selected French Crab Roots. (See C in photo.) To each is grafted a long scion of sturdy Rot Resistant Stock, which forms the main mass of lusty root growth and the trunk. (See B in photo.) High up on this disease resistant "Double-Life" body, is added the Grimes Golden bud. (See A in photo.) Result—a "Double-Life" Grimes Golden tree. Wood of Grimes Golden well above ground. Can be no collar rot—and trunk becomes stronger at union than any other point.

COSTS MORE—BUT IT PAYS

This is an expensive process for us—requiring 3 full years in our nurseries to produce a one-year "Double-Life" Grimes Golden tree. But we have double reward in saving this great apple for American

Orchardists and practically doubling its life. To give the famous "Grimes Golden" the added value of the sturdiness of this Long Life Stock—this is a triumph of which we are justly proud.



Yellow Transparent Ripens very early. Large, waxy yellow, crisp, sub-acid, fragrant. Tree bears young. Blight is its great enemy. Prefer Henry Clay, EATING, MARKET. NNCS.

Sweet Bough (Early Sweetheart) Summer. Pale yellow medium size, delightfully flavored sweet apple. Tree rather bushy, bears well, fruit ripens thru a long season. Ideal dessert apple. EATING, DRYING. NCS.

Banana Winter. Clear yellow, pink blush. Has banana flavor. Requires careful handling. Golden Delicious superior. EATING, COOKING, DRYING, MARKET. NCS.

***Bellflower Improved** Winter. Kansas seedling of Bellflower. Originator says: "Outbears all others; never failed since five years old." EATING, COOKING, DRYING, MARKET. NCS. Introduced by Stark Bro's.

***Early Harvest** Summer. Pale yellow, slightly sub-acid, fair quality; an old favorite, but it scabs. Henry Clay is better, larger, more satisfactory and more profitable. EATING, COOKING, MARKET. NCS.

***Stark's Golden Delicious** Late Winter. See pages 2 to 8 for description and record.

Maiden Blush Early Fall. Grown by us for over half century. Pale lemon yellow, bright blush. Vigorous, spreading, sometimes blights. COOKING, EATING, DRYING, MARKET. NCS.

***Stark Florence Crab—Red** Summer. "Worth all others put together." Most valuable crab we have tested—and we have fruited them all. Bright, ruby red, striped crimson. Tree dwarf, spreading, young bearing, extremely hardy, blight resistant, in blossom a marvelous sight—ideal ornamental for lawn. Delicious for sauce, wonderful for jelly, jam, preserves, cider; the housewife's favorite. Plant close—12 feet; splendid filler. EATING, COOKING, MARKET, CIDER. NNCS.



White Pippin (Col. Brackett Strain.) Winter. Special strain from W. Va., sent to us by the U.S. Pomologist as best type of this apple. Vigorous grower, hardy, bears big crops every year. Fruit large to very large, a light waxen yellow. Stark's Golden Delicious far superior. COOKING EATING, MARKET, DRYING. NCS.

***Stark Gold Crab** Beautiful New Golden Crab. Perfect crab for jelly. Tree hardy as an Oak; vigorous; bears big crops. COOKING, MARKET. NNCS. Introduced by Stark Bro's.

***Henry Clay (Trade-Mark)** Very Early Summer. Large pale yellow with crimson cheek. Looks like Maiden Blush, but is better, more beautiful, 2 months earlier, and ripens its crop quickly and evenly. Tree strong growing, spreading, regular and abundant bearer; blooms late, is hardy and is earlier, larger, better quality and a better shipper than Yellow Transparent. Commands top prices on all markets and its value is being recognized by orchard planters everywhere. Should be planted in every home orchard as well as commercially. The apple eating public will always pay liberally for this beautiful apple, as

it comes on the market when people are apple hungry. EATING, COOKING, MARKET. NCS.
"Best extra early apple."—Frank Femmons, Calif. "The most delicious apple I ever tasted."—R. F. Rutledge, Tenn. "Very hardy and thrifty; yellow, reddish cheek, very fine flavor."—M. Roach, Mont. "A little larger than Yellow Transparent, two weeks earlier than Williams; sells at better price; no signs of aphid or blight. We consider it one of the best apples."—N. J. Fruit and Produce Co. "Resembles Maiden Blush—nearly 60 days earlier, better, has never failed a crop."—W. H. Knight, Originator, Ky.

Henry Clay (Half Size)—"Best Extra Early Yellow Apple"

Stark's Select Red Apples

Varieties Marked with ★ and Printed in Red Type are the Very Best

Stayman
Winesap
Average
Size

★ Stayman Winesap *Late Winter.* Largest, handsomest, best of Winesaps. Our Stark - Bearing

Stayman trees are propagated from famous Hopkins (Va.) 22 Barrel tree. (See cut below.) Extra large; smooth, regular, beautiful bright red; juicy, crisp, mild, delightful flavor—one of the best known, best liked, most sought for apples. Tree strong, full of vigor; hardy, young, heavy bearer, spreading. Prof. Scott, U. S. Dept. and leading authorities all want Fruit Trees from Heavy Bearing, Never-Failing Trees. So does every wise orchardist. We searched the U. S. for the finest Stayman tree with the heaviest bearing record and found it.

The great Stayman has proved and established itself as a Money Making leader. Stayman is a seedling of Winesap, originated by Dr. Stayman, Leavenworth, Kan., 40 years ago. We began its propagation in 1895. The originator wrote us: "It is worth more than the whole known race of winter apples." **EATING, COOKING, CIDER, MARKET. NCS.**



Stayman
Winesap.

Baldwin *Winter.* Good Winter apple

East, Fall apple West and South. Being replaced by better varieties, notably Stark Delicious NCS.

★ Buckingham Improved

(Stark Strain.) *Late Summer.* Large, mottled red, crisp, juicy. Tree is young, sure bearer. Fine for cooking and cider. NCS.

★ Champion *(Trade-Mark)*

Late Winter. Discovered in early 90's and introduced by us. Bright red, good quality. Ship perfectly and keep till apples come again. **Eating, Cooking, Drying. Market. NCS. Introduced by Stark Bros.**

Duchess *(Oldenburg).*

Summer. Medium size, red striped, mottled with crimson; sub-acid. Tree hardy, young bearer. **Eating, Cooking, Market. NCS.**

★ Dark Red Rome Beauty

Winter. Magnificent improved strain of Rome Beauty. Brilliant deep dark red. We concentrate on Dark Red strain from U. T. Cox Orchard, Proctorville, Ohio, America's noted Rome Beauty grower. One of four varieties out of 200 in our orchards that came through killing late spring frosts and bore. **Cooking, Eating, Market, Drying. NCS. Introduced by Stark Bros.**

★ Early Melon *Fall.*

Large, splashed crimson, crisp, juicy. Tree hardy, bears full. **Eating, Cooking, Market. NCS.**

★ Giant Jeniton

(Trade-Mark). *Winter.* Best of Jeniton type. Introduced by us many years ago. Large fruit—makes best cider. Tree hardy. **Eating, Cooking, Cider, Market. NCS. Introduced by Stark Bros.**

Rome Beauty

Winter. Large light red apple. Tender, juicy, good eating, keeps well. Late bloomer; often escaping late spring frosts. In Ohio, 40 trees in I. T. Lewis orchard bore 1,429½ bushels. **Cooking, Eating, Market. NCS.**

★ Senator *(Trade Mark).*

Late Winter. Dark cherry red colored apple. Discovered and introduced by us 25 years ago. Possess singularly fine quality. Hardy even far North. **Cooking, Eating, Cider, Market. NNCS. Introduced by Stark Bros.**

Willow Twig *Late Winter.*

Large, pale green, blushed with red. Does not bear young. Subject to canker. **Market, Drying, Cooking. NCS.**

★ Stark Sum. Queen

Summer. Large, bright red striped summer apple. A seedling of old Early Pennock, but earlier, better. **Eating, Cooking, Market. NCS.**

★ Jonathan *Winter.* A nationally known and universally liked brilliant red apple with a wonderful spicy, rich flavor.

Widely adapted and largely grown throughout northwest, central west, east and south—everywhere except the far north. In the Great Mississippi Valley section, Jonathan is one of the most profitable kinds. **EATING, COOKING, CIDER, MARKET. NCS.**

"Jonathan is a good orchard tree, rather spreading in growth, extremely long lived—practically canker immune. Comes into bearing young. Its heaviest crops are borne every other year—a heavy crop and then a light one." "Always juicy—one of the best early winter, home or market; juicy to the last."—Prof. H. E. Van Deman, ex-U. S. Pomologist.

★ Liveland Raspberry

Early Summer. H. B. Fullerton, L. I. Exp. Sta., says: "Far and away the best early apple. Larger than Yellow Transparent, waxy white surface almost entirely over-spread with a blush and stripings of pinkish red; flesh white as snow, tender, fine-grained, delightful quality. Tree upright, bears young, and can be planted as close as peaches; hardy far North. Never known to be seriously injured by blight. **Eating, Cooking, Market. NCS.**

★ Mammoth Black Twig

(Stark Strain-Gilbert). *Late Winter.* An improved strain that bears younger, is much better color, and better quality than the Old Arkansas (M. B. Twig). **Eating, Cooking, Market. NCS.**

McIntosh Red

Early Winter. Tender, juicy, with a peculiar fragrance. Beautiful crimson, flesh crisp, delicate—almost snow white. Trees propagated from selected Montana Red McIntosh orchard and carefully kept pure. Tree long-lived, hardy. Bears young. **Eating, Cooking, Drying, Cider, Market. NNCS.**

Northern Spy *Winter.*

Very slow in coming into bearing, susceptible to scab. Stark's Golden Delicious bore at 3 yrs. in N. Y. Exper. Station—6 yr. Baldwins failed to bear. **NNCS.**

Northwestern Greening

Early Winter. Greenish yellow apple—only fair. **Cooking, Drying, Market. NNC.**

Red June *(Carolina)—*

Early Summer. Flashing red apple. Tart, juicy. Scabs badly. **Cooking, Wilson Red June better. NCS.**

★ Winesap *Late Winter*

(Our special Virginia strain). Good table and cider apple. Profitable market variety. Good size, color and keeping. Vivid red, firm, crisp, rich, satisfying flavor. Tree hardy, regular and heavy cropper. Has tendency to be short-lived because of poor root system, but our "Double Life Method" corrects that. **Cooking, Eating, Cider, Market. NCS.**

★ Wealthy *Fall.*

Best Fall apple. Noted for hardiness. Brilliant red striped, medium to large, with wine-like flavor. Tree strong, spreading grower. Bears very young, every year. Free from disease. **Eating, Cooking, Market, Cider. NNCS.**

★ Wilson Red June *Summer.*

Enormous early apple. Glorious deep red. Ripens as Red June goes out; excellent quality. Tree hardy. Stood 40 degrees below zero without injury. Ships well. **Eating, Cooking, Market. NNCS.**

★ Paragon Winesap

Late Winter. Fittingly called "The Glorified Winesap," because of its larger size, higher color and superior quality. Fruit large, deep red, firm, mild, sub-acid, superb quality, keeps till late spring and does not scald. Tree grows to immense size, spreading, long-lived, bears tremendous crops. Do not confuse with M. B. Twig (Arkansas). Many so-called Paragon Winesaps are simply the inferior trees rightly known as "little Paragon," "Mammoth Black Twig" and a so-called "Gilbert." Be safe—get the real Paragon Trees from us. **Cooking, Eating, Market. NCS.**



The "Father Tree" of our Stayman Winesap trees. Bore 22 barrels in one crop in famous Hopkins' (Va.) orchards. We propagate from wood of this never-failing, annual crop tree.

Rambo Imperial

Early Fall. Of old Rambo type, but handsomer, larger, better. Red striped. Mild flavor. Has all good points of old Rambo without its faults; fruit does not crack. **Eating, Cooking, Drying. NCS.**

York Imperial *(Johnsons')*

Fine Winter. *Late Winter.* Large, lop-sided apple. Fair to good quality. Keeps well but has tendency to scald in storage. **Cooking, Market. NCS.**

★ Summer Champion *Summer.*

Brilliant red striped apple. Ripens between Wilson Red June and Maiden Blush. Best keeping, shipping summer sort. **Introduced by Stark Bros. Cooking, Eating, Market, Cider. NCS.**



Winesap
(Va. Strain)

The Peach Team that Hauls La

Stark Early Elberta

Introduced by Stark Bro's

Photographed Actual Size



STARK EARLY ELBERTA

Specimen from Stark Early Elberta Trees in Orchard of Dr. E. L. Morris, Fayette Co., Tenn. These were the biggest, handsomest peaches we ever saw—averaged 18 ounces.

IT was only after we had tested over 4,000,000 peach seedlings—and had continued our tests over 30 years, that we gave out to the world of fruit-growers and fruit lovers the announcement that Stark Early Elberta was (as it still is) our preference of all the Elberta type.

We found it to be the best of the more than 4,000,000 peach seedlings that we grew and tested.

This one of all the trees tested proved itself far superior in quick growth, in resistance to disease, drouths and climatic changes, in young and heavy bearing, in bearing regularly and in the quality, as well as the quantity of the fruit it bears.

It is not only a magnificent peach in appearance (so that it always commands top-market prices) but it possesses the advantage over old Elberta, in that it

Ripens 2 Weeks Earlier Than Old Elberta

That is an advantage that the man growing peaches for the high-price markets will be quick to see. Stark Early Elberta pays growers more because it is an early ripener and because it possesses such remarkable quality. It's a big, glorious peach, with very little fuzz—golden yellow, blushed with carmine and with tender melting buttery flesh that is simply packed with honey-sweet juice.

Holds World's Shipping Record—Over 11,000 Miles Without Damage

That's the famous Peach Shipment Record you have read about in all farm papers. From Utah to the office of the Rural New Yorker, in New York City. Then reshipped to Prof. Wickson, Director of Calif. Agric. Exper. Station. By him, again shipped to Editor of Fruit Grower—and then once more re-packed and re-shipped to Stark Bro's, Louisiana, Mo. The total of the journey was 11,509 Miles without an ounce of ice. The Stark Early Elberta Peaches withstood the hardships of this record-breaking trip splendidly. They reached us at the end "fresh as a daisy"—the color still a pure unblushed gold—and sweet as honey-dew.

Brought \$6.00 Per Bu. in Illinois

"Stark Early Elberta sold at Mt. Sterling, Ill., for \$3.00 per bushel, and sold as high as \$6.00 in many instances."—R. M. Barnett, Brown Co., Ill.

Bore at 2 Years in Kans.

"My Stark Early Elberta trees bore their first crop at 2 years. It is the hardiest, most profitable and superior in quality to any other."—O. J. Taylor, M. D., Sedgwick, Kans.

Warning to Peach Growers

Several inferior so-called Early Elbertas have been grown by others. Just because they ripened a few days ahead of Elbertas they were called "Early" Elbertas. We have found after careful investigation, that they are not the genuine Stark Early Elberta, but entirely different varieties, originating in other sections. Be sure you get the genuine. Stark Bro's have a contract for the exclusive propagating rights of all genuine trees owned by Dr. Gleason, the originator.

Stark Bro's Exclusive Contract for Stark Early Elberta

In consideration of \$..... the said Sumner Gleason (the originator of Stark Early Elberta) does hereby grant, assign and set over unto Stark Bro's the exclusive right and control of all stock and buds of the original tree to the sole use and control of Stark Bro's; said Sumner Gleason agrees to personally supervise the cutting of buds from original bearing tree or any parent tree.

Grow As Big As A Pint Cup

"Stark Early Elberta in my orchard were larger than a pint cup and nearly 20 days earlier than old Elberta. Could not supply the demand."—S. W. Gray, Pendleton Co., Ky

Finest Commission Men Ever Saw

"My Stark Early Elberta had a fine crop last year. Commission men said they were the best they had seen on the market."—C. C. Pickering, Fairfield Co., Ohio.

Sells for 100 Per Cent More Than Old Elberta

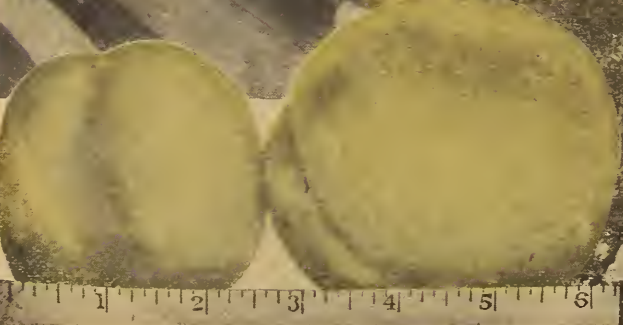
"The fact that Stark Early Elberta reaches the market a week to 10 days ahead of original Elberta often makes a difference of 100 per cent increase on the market price. There is no peach that compares with it for quality. Its habit of young, heavy bearing makes it all that could be desired. Trees are vigorous and hardy."—U. F. Hansen, Logan, Utah.

Glorious, golden Stark Early Elberta peaches like these brought Louis Siebert, Taney Co., Mo., \$3.60 per crate when old Elberta brought merely \$1.45.



Order Early

There is a serious shortage of peach trees, especially Stark Early Elberta and J. H. Hale, this year. "First come, first served" must be our rule.



Average Specimens Grown in the Same Orchard Under Identical Conditions (old Elberta at left—Stark Early Elberta at right).



3-year-old Stark Early Elberta. Orchard of Mr. Knudson Heavily Loaded with Magnificent Peaches.

Largest Riches Home to Growers!

Elberta and J. H. Hale

J. H. Hale Peach Grown By The Late J. H. Hale, South Glastonbury, Conn.

Here's the "Million-Dollar Peach"

This famous peach is a Mid-Season ripener—ready to be picked just before Elberta. It is the wonderful yellow Freestone that has been talked about all over the nation.

Originated by Mr. J. H. Hale, "The Peach King." In size, color, texture, flavor, keeping and shipping qualities, J. H. Hale surpasses old Elberta. Often sells for \$5.00 per bushel when Elberta brings \$3.50. Mammoth in size, vivid carmine over golden yellow, almost perfectly round, fuzzless and smooth as a glove. Commands instant attention on all markets by its Giant size and glorious color. Flesh solid like a cling, yet melting, tender, free from grain and stringiness, is of **exquisite peachy flavor**—without any of the bitter tang of Elberta; almost as firm as a clingstone.

A Wonder Shipper

Shipping ability is really marvelous;—have been actually shipped in barrels like potatoes—1,000 miles and arrived in good condition. Tree a stocky grower, often bears at 2 years old. Bears heavily and has proved its adaptability to a wide range of soils and climates but does best in good land. The N. J. Exp. Sta. says—"From our experience J. H. Hale is a much superior peach commercially to Elberta—and an extraordinarily good shipper."

Sell for \$5.00 Bushel in Ind.

Among the best known orchards in America are the Simpson orchards at Vincennes, Ind. For several years J. H. Hale has been their big profit maker. Last summer when most peaches were killed J. H. Hale produced a big crop and brought \$5.00 per bushel. The Simpsons consider it their greatest money-maker.

Marvelous Yield \$1,420.00 per Acre

J. H. Hale trees have yielded such enormous crops of such fancy fruit that they have actually produced the astonishing profit of \$1,420.00 per acre on one year's crop. Quoting from Southern Farming: "From this one acre of J. H. Hale trees, we harvested 748 bushels, which would make practically 1,500 full peach baskets and 1,000 six-basket crates, 95% of this fruit was in first class, merchantable condition and sold the next morning at an average of 60% higher than the old Elberta."

Big Nor. Car. Grower Praises J. H. Hale

"J. H. Hale peach is far superior to any other kind, larger, much better color, better taste, stand shipping much better."—Gold Medal Orchard, T. S. Welton, Oakwoods, N. C.

J. H. Hale Trees Very Scarce

You must **Order Quick** if you want your J. H. Hale trees this season. The Fall demand has been exceptionally heavy—and we are sure to be "sold out" on this variety quickly.

Be Warned in Time—Order Early!

22° Below Zero—No Injury

"J. H. Hale is beyond any claims made for it. Elberta froze out at 22° below zero, Hale came through without injury. Very large fruit; very vigorous. Rapid grower. Will displace Old Elberta in future plantings."—N. P. Mead, Chelan Co.

J. H. Hale in America's Largest Peach Orchard

"Spent three years in the largest peach orchard in America—the Bert Johnson Orchards at Nashville, Ark. Saw J. H. Hale coming into bearing alongside Elberta and I know it is **all you claim** in size and flavor."—Henry Leaton, Garland Co., Ark.

Free from Disease

"The J. H. Hale is the greatest peach I ever saw. Must say they are **better than anything else** I have. Your Hale trees are absolutely free from any disease."—Jas. M. Mount, Montgomery Co., Md.

\$34,000.00 for One Crop From 65-Acre Orchard

Prof. F. D. Garrison, Field Agent, Tennessee Horticultural Society, recently wrote: "List and Downey's peach orchard, **only 6 years old**, produced **16,800 bushels** from 65 acres this year. Has not missed a crop since it was 3 years old. Trees are J. H. Hale, Elberta. . . . Net income from orchard was \$34,000.00."

This Man Planted 14,000 J. H. Hales

Hon. Parker Earle, Ex-Pres. American Hort. Soc., who planted 14,000 Hale, wrote: "I have fruited J. H. Hale this past season from trees planted last year. I had specimens $3\frac{1}{4}$ and $3\frac{1}{2}$ inches in diameter. They grow as large as Stark Early Elberta."

Bring \$250.00 More per Car than Old Elberta

A recent number of the Atlanta "Constitution," had this to say:

"In car lot shipments, cars loaded one-half old Elberta and one-half J. H. Hale have been sent out, thus testing their selling value side by side. Last year the new peach netted 50% a crate or \$250.00 a car more than old Elberta."

This great peach becomes perfectly colored before fully grown, and if the trees are too heavily laden with fruit, they can be thinned and the peaches thus removed can be shipped. The following week, the peaches left on the tree have reached enormous size, but should the market be crowded, such is its sturdy qualities that it can be left on the trees for yet another week, and then be in prime condition for shipment."



J. H. HALE



The J. H. Hale Tree shown above was top-worked in Stark Bro's test orchard in 1911 from buds cut by Mr. J. H. Hale from his bearing orchards. We also budded the same year over 50,000 J. H. Hale in nursery rows selling same to Mr. Hale the following year. We have never allowed anyone to cut buds from or mutilate these trees in our Test Orchards here at Louisiana, Mo.



Photo above shows Stark Peach Trees, Grown by the Hundreds of Thousands in Stark Bro's Nurseries at Louisiana, Mo., America's Leading Peach Tree Growers. "Quality First—We Then Reduce the Cost to You by Growing Millions."

C. F. Haight's 3-year-old New York "Stark Tree Peach Orchard in Yates County. Averages 12 Quarts per Tree—Very Fine and Brought Top Market Price. (Photo at left.)

Larger Than Elberta

"J. H. Hale trees in our orchards bore J. H. Hale the past season one-third to one-half larger than old Elberta. The flesh very firm after the green under color had completely changed to yellow Hale ripens same season as old Elberta."—M. A. Blake, N. J. State Horticulturist.

Our "Silver Medal" Peach Selection

Of White-Fleshed Varieties

***Red Bird Cling** (Best very early white peach) (Introduced by Stark Bro's). The first big peach (as large as Elberta) that is ready for market. Bert Johnson, the Peach King of Arkansas, who harvested over 1,000 carloads of peaches from his 4,600-acre orchard this year (1921), despite country-wide frosts and freezes, received \$4.00 to \$4.50 per bushel for his Red Birds.

It has been a sensation almost from the year that we introduced it. Bright, glowing color—"red as fire"—with creamy snow-white flesh of fine firmness (unlike some extremely early peaches) which makes it a wonderful shipper. Exceptionally free from rotting.

Coming onto the markets so very early, this magnificent peach finds folks keenly hungry for fruit. The prices Red Birds bring are phenomenal.

E. W. Kirkpatrick, Texas' great peach authority, says: "Red Birds making a wonderful record. Now selling for from \$4.00 to \$6.00 per bushel by the carload."

New York, Missouri, Connecticut, Idaho, Washington, Illinois, Michigan—peach regions everywhere are wild with enthusiasm over this extremely early white peach. It is extremely hardy. Has large, light pink blossoms like Alton, Eureka and other extra hardy sorts. Often bears full crops when others—so-called hardy sorts—are failures.

Ripens 45 days ahead of Elberta.—NNCS.

***Eureka** (Early White Freestone) (Introduced by Stark Bro's). Proved absolutely the hardiest white freestone peach. Has even borne fair crop after 32 degrees below zero freeze that totally destroyed all other buds.

A beautiful rosy-cheeked peach, with milk-white flesh of delightful flavor. Ripe about a week earlier than Alton—and as large as Carman, but surpasses it in flavor and shipping qualities. Bring excellent prices—and a great favorite with growers along the northern limit of peach belt. They know the profit of early peaches in scarce peach years.

Tree extra thrifty and healthy. A great dividend producer in Texas, Arkansas, Tennessee, Georgia, Maryland, Missouri, New Jersey, New York and other peach regions.

Ripens 35 days ahead of Elberta.—NNCS.

***Alton** (Early White Freestone) (Introduced by Stark Bro's). A wonderfully colored, white fleshed freestone peach. Sweet, juicy and luscious.

We introduced Alton on advice of E. H. Riehl, Director, Ill. Expr. Station, Alton, Ill.—and it has scored a sensational success. Tree extremely vigorous and hardy.

Recently when 32 degrees below zero killed practically all peach crops, Alton made crop.

"Alton trees have borne every year since they came into bearing. I know one grower who has had Altons 8 or 9 years, which missed but one crop."—U. L. Coleman, a South Missouri orchardist.

J. T. Giles, Washington Co., Tenn., reports: "My 3-year-old Alton trees produced \$8.00 per tree—averaging 3/4 pound each." Ripens 30 days before Elberta.—NNCS.

***Stark Summer Heath** (Mid-season White Cling) A creamy white peach of Heath type. Snow white flesh clear to pit. Large, handsome, luscious and sweet—a wonder peach for canning, requires very little sugar. Extremely hardy tree. Sure, heavy bearer. Ripens 7 days after Elberta. Should be planted in every family orchard.—NNCS.

***Illinois** (Trade Mark) (Mid-season White Freestone) (Introduced by Stark Bro's). A large, handsome, ruddy cheeked peach with pure white flesh, juicy, spicy, highest flavor. Exceptionally hardy. Remarkably free from rot. Ships splendidly.

Growers of Illinois peaches send us enthusiastic congratulations on introducing this peach: "I had 17 quarts from 2 two-year-old Illinois trees and thinned half at that."—B. O. Bogert, Bergen Co., N. J. "Illinois peach trees in my orchard loaded when other sorts failed to bear."—J. D. Hofreiter, Tazewell Co., Ill.

Ripens about 10 days after Elberta.—NNCS.

***Stark Heath Cling** (Very Late White) (Introduced by Stark Bro's). Our own strain of Heath Cling.

Michigan Experiment Station declared this peach to be more than 100 per cent more productive than the old Heath Cling.

We have been growing this strain for many years and use it exclusively in our own plantings. The fruit is tender, melting, juicy and most luscious. Ships splendidly. Ripens 40 days after Elberta.—NCS.

Other White Fleshed Varieties

We also supply trees of Belle of Georgia—Carman—Champion—Early Mamie Ross—Early Rose—Late Quality Queen—Mammoth Heath Cling—Martha Fern Cling—Mayflower—Old Mixon Free Improved—Hiley—Sea Eagle Improved—Greensboro and Yates Red Cling—all varieties that we can recommend.



Red Bird

Eureka

Alton

Stark Summer Heath

Illinois

Stark Heath Cling

Of Yellow-Fleshed Varieties

June Elberta

★June Elberta (*Earliest Yellow Semi-Freestone*) The earliest ripening peach of the Elberta type—ripens at the same time as Red Bird Cling. By planting June Elberta, Stark Early Elberta, J. H. Hale, Elberta Cling, Elberta Queen (our own strain), Late Elberta and Krummel October, you are assured a succession of glorious yellow peaches from June till heavy frosts.

It is a great big, handsome peach that ripens with the very earliest—and *resists rot*. Because of high color, large size and good shipping qualities, it brings top prices everywhere. The trees are enormously productive, young bearers, vigorous and hardy. Will thrive wherever peaches grow.

Wm. H. Welch, Salem, Mo., reports: "Half bushel to three pecks June Elberta on 2-year-old tree. By far the best early peaches I ever saw. They ripen evenly, the flavor is fine and the flesh is a deep rich yellow clear to the seed."

B. Carine, the Peach King of Connecticut, writes: "One of the heaviest bearers in my orchard—a great money maker."

Ripens 34 days before Elberta.—NCS.

★Stark Early Elberta (*Early Yellow Freestone*) (Introduced by Stark Bro's.) The greatest of the Elberta type. See page 16 for full description.

Ripens 14 days before Elberta.—NCS.

★Elberta Cling (*Mid-season Yellow Peach*) (Introduced by Stark Bro's.) An Elberta—with all the Elberta characteristics of heavy bearing, great size, and splendid flavor, except it is a cling-stone. It is an exceptional fine cling—and as such always will demand a big price on the market. This is especially true because it is such a fine shipper, a tremendous producer. J. C. Blythe, Buchanan Co., Mo., reports, "From 6 trees I gathered more than 100 baskets."

Profitable because good cling peaches are always scarce. Ideal for pickling, canning and preserving.

The tree is a sure cropper—bears heavily—and has never disappointed us in many years in our test orchards.

Ripens 3 days before Elberta.—NCS.

★J. H. Hale (*Mid-season Yellow Freestone*) The wonderful money-making team-mate of Stark Early Elberta. See page 13 for full description.

Ripens same time as Elberta or can be picked a few days earlier.—NCS.

★Elberta (Queen) (*Mid-season Yellow Freestone*) For years the standard peach for commercial orchards. Many years of experimenting, observation and testing enable us to offer peaches of the Elberta type ripening throughout the season. Plant June Elberta, Stark Early Elberta, J. H. Hale Elberta, Late Elberta, October Elberta and Krummel October for big profits. Our "Queen" strain of Elberta is a select one—NCS.

★Krummel October (*Greatest of All Late Peaches (Latest Yellow Freestone)*) (Introduced by Stark Bro's.) The

peach that ripens after all other good peaches are gone—reaches markets at the time when it has no competition! Always brings highest prices.

The peach is of immense size—almost as round as J. H. Hale, deep yellow with a blush of carmine on the sunny side. No peach is sweeter or better—no bitterness whatever next to the pit. Flesh firm and of fine texture—ships perfectly. Has quality almost equal to Stark Early Elberta, the finest of all peaches that man can grow.

The tree is a strong grower, young bearer and extremely hardy. The fruit hangs very late—weeks without decaying. We have seen them hanging on the trees even after the first frosts, looking like balls of blood-red sunset.

Ripens 40 days after Elberta.—NCS.

Other Yellow-Fleshed Varieties

★Big Indian Blood Cling (*Mid-season Red Flesh.*) Biggest, handsomest peach of all the Blood Clings.

★Chair's Choice (*Late Yellow Freestone.*) Best of the Crawford Late type. NCS.

★Capt. Ede (*Mid-season Yellow Freestone.*) Large, excellent shipper. NCS.

★October Elberta (*Very Late Yellow Freestone.*) A big, handsome peach. Ripens just ahead of Krummel October. NCS.

★Salway. (*Holsinger Strain. (Very Late Yellow Freestone.)*) An improved Kansas strain from the grounds of Major Frank Holsinger. Not as good as Krummel. NCS.

★Engle Mammoth (*Mid-season Yellow Free Stone*) Immense size, attractive, splendid

quality; makes friends and holds them; thoroughly hardy. Popular North. NCS.

★Crawford Early Improved (*Mid-season Yellow Freestone.*) Better quality and harder than old Crawford Early—the best peach of this type. CS.

★Crawford Late Improved (*Late Yellow Freestone.*) Larger, better quality, harder, surer bearer than old Crawford Late. NCS.

★Golden Sweet Cling (*Mid-season Yellow.*) One of the juiciest, sweetest and most delicious of all clingstone peaches; thoroughly hardy and immense size. NCS.

★Idaho Mammoth (*Late Yellow Freestone.*) An immense yellow peach with red blush. Attractive and delicious. NCS.

Stark Early Elberta

June Elberta

Elberta Queen

Krummel October



Introduced by Stark Bro's

Big, Rich, Juicy Cherries

SHADY Cherry Trees ornament any lawn or driveway. Beautiful with the exquisite veil of white blossoms in April—glowing with crimson, juicy fruit in June. Filled in early summer with fruit for eating, cooking, canning, pies and preserves. Every home and

farm should have its Cherries. Easy to grow, need little space, bear young. After 100 years' testing, the sorts here listed on pages 16 and 17 proved best. Those starred thus (★) are very Superior. Those with ★★ very BEST.

★★Montmorency Stark *Mid-Season.* The best strain of Montmorency. From a select tree on our grounds which uniformly bore very large fruit—larger than any other Montmorency. Tree stronger grower than Montmorency-King (Ordinaire). Our favorite for over 20 years. Fruit large, flesh firm, ships perfectly; tree strong grower, sure and young bearer, produces tremendous money-making crops—succeeds throughout the U. S. Should be grown on every farm and on every town lot, wherever there's a space 10 feet square. The perfect variety for pies, preserves, cobbler, puddings, and other good "eats." The Montmorencys are the best "so-called" sour cherries—they are not really sour, for Montmorency when fully ripe is sweet and luscious. Three-fourths of all cherries should be of this type. They are the most perfect in tree, resist disease,

largest of all the sour cherries, very hardy; less affected by wet weather, are most productive and bear best fruit of all the sour. No matter how unfavorable the season, the Montmorencys can be depended upon. They are hardy, bloom late, sure bearers. On account of young bearing, semi-dwarfish growth, they make ideal fillers for apple orchards. Excellent shippers, always bring good prices. In canning factories they are preferred and are wanted by the thousands of tons. NNCS. Introduced by Stark Bro's.

★Montmorency King (Ordinaire.) *Mid-Season.* Cannot be too highly recommended for quality and quantity of fruit, hardiness and beauty of tree, and unfailing crops. Ripens a week or 10 days after Early Richmond. The Montmorency is the most widely planted of all sour cherries, but there are not one-half enough grown to supply the demand for the fruit. The trees do not require much care, and they produce immense crops every year—no matter how unfavorable the season may be. Montmorency Stark and Montmorency King are ideal for the market orchards, the home orchard, and the small yard. Should be planted everywhere. NNCS. Introduced by Stark Bro's.

"I have several of your Montmorency King cherry trees. I picked 25 gallons off one tree this year, 7 years old."—G. W. Maxwell, Jasper Co., Mo.

★Suda Hardy *Late.* Wherever a late cherry is wanted, plant Suda Hardy. Tree perfectly hardy and fruit is produced in immense quantities. English Morello type, but larger, not quite so acid, better quality and the tree produces larger crops. Ripens 10 days after the Montmorencys are gone. **Eating. Cooking. Market.** NNCS. Introduced by Stark Bro's.

★Dyehouse *Earliest of All.* A better cherry than Early Richmond; a week earlier, larger, smaller seed—best very early variety. Grown largely all over the United States. Tree thrifty, unusually strong grower, good bearer and in every way satisfactory. Dyehouse, Montmorency Stark and Suda Hardy, is a combination that gives fruit during entire cherry season. Recommended for general planting. NNCS.

★Montmorency Large (*Early.*) Somewhat larger than Montmorency King. Ripens a little later. Growers should be careful in buying Montmorency Large. Ours is from Dansville, New York. Some other strains have proven worthless. NNCS.

★Montmorency Monarch *Mid-Season.* A splendid strain of Montmorency from Iowa Exper. Station, where it made a wonderful record. 70 Monarch trees here produced 1,175 gallons after birds and children had feasted many times. NNCS. Introduced by Stark Bro's.

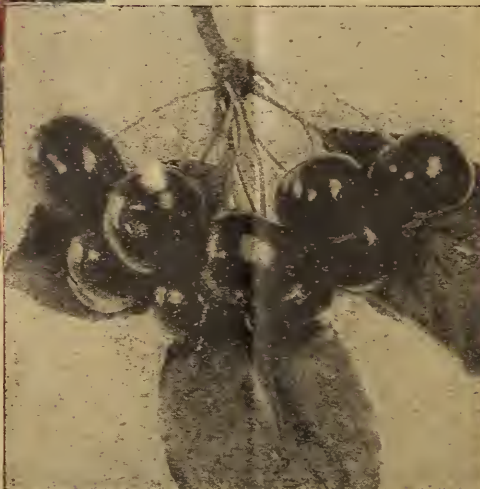
★Early Richmond (*Early May.*) Ripens week later than Dyehouse, not so good as that variety. Medium size, clear, bright red. Not so desirable, however, as the Montmorency group. Three-fourths of all cherries you plant should be Montmorencys. NCS.

★Montmorency Sweet *Mid-Season.* A true Montmorency, but sweeter than any other strain. Originated on our grounds where we watched it for many years before introducing. NCS. Introduced by Stark Bro's.

English Morello (*Very Late.*) Dark red, tender, juicy, very acid; tree small spreading, poor grower, not as hardy or long lived as Suda Hardy or Wragg. N. C.

Wragg (*Very Late.*) Morello type. Largely planted, but Suda is better. Popular in Colorado. Fewer Morellos are being planted in all cherry sections and more and more Montmorencys. Abundant bearer, dwarfish in growth, resistant to disease. NCS.

Introduced by Stark Bro's
Montmorency King



Suda Hardy—Wonderfully Hardy, Fine, Late Cherry



Glorious Sweet STARK GOLD

Owned and Sold Only by Stark Bro's

Cherries

At last we can offer a sweet cherry that is **really hardy**. Stark Gold Cherry came from Richardson Co., Neb., and was introduced by Stark Bro's. We quote Mr. Thomas, the originator: "Surpassed in hardiness any cherry on my place. Thermometer often registers 40 degrees below zero, and average winter reaches 25 to 30 below. Stark Gold never misses a crop. Sells for 3 times the price of other cherries." The fruit is of immense size, **glossy, almost transparent, pure, lustrous golden color** without a single touch of red, and the **quality is superb**. It ripens about 2 weeks later than Early Richmond, but will hold



Stark Gold Cherry
(TRADE-MARK)

Our Exclusive Contract
"In consideration of \$..... said C. J. Thomas hereby agrees to furnish said Stark Bro's all buds, etc., from said Stark Gold Cherry Tree and give said Stark Bro's exclusive right and control of all buds, etc."

on to the tree 10 days after ripening. Cherry growers throughout the whole country are enthusiastic over this wonderful sweet cherry and we have never been able to grow enough to supply the demand. **Eating, Cooking, Canning, Market.** NNCS. Introduced by Stark Bro's.

Trees Full of Great Big Glowing Golden Cherries. My Stark Gold Cherry blossomed less than fourteen months after being set out and matured five or six cherries. It has borne every year since and this is the third year.—Mrs. J. S. Brown, Connecticut.

Great Big Yellow Cherries. Our 4-year-old Stark Gold Cherry Tree is five inches in diameter and eighteen feet high. Last year it was full of great big yellow cherries, **solid meat** and splendid flavor.—Roy F. Barnes, Illinois.

*Black Tartarian Improved

(Deacon) (Early.) A large, black, heart-shaped, tender, juicy, sweet cherry of surpassing quality. Tree an upright, dense grower, remarkably vigorous and a regular bearer of immense crops. This variety in the orchard of B. Newhall & Son, Leelanau Co., Mich., produced fruit which sold at the rate of over \$4,000 per acre. This is a greatly improved seedling of the old Black

Best of all Black Sweet Cherries

Tartarian, locally known as Deacon. Wherever sweet cherries will grow, we unhesitatingly recommend this variety. In the East and Central West the best, hardiest, earliest and most profitable sweet cherry. Black sweet cherries are always in big demand. Note the enormous crop-producing ability of this great sugary, black cherry that brings such high prices on the fancy markets. NNCS. **Introduced by Stark Bro's.**



Magnificent 1-Year-Old Stark Gold Cherry Trees in Our Nursery.

Napoleon (Late.) A large, yellow, sweet cherry, attractively blushed with pink—beautiful and delicious. Largely grown in the West and in all sweet cherry sections. Ships well and is one of the finest for canning. Strong, hardy tree and bears immense crops. NCS.

Most Productive and Most Profitable. Napoleon cherry the most productive of the yellow sweet cherries; fruit large, heart-shaped, and mottled with red, texture firm, and quality fair. The trees are hardy and thrifty; one of the most profitable sweet cherries on trial. Very firm; valuable both for home use and market. Vigorous, productive—bore the heaviest crop of any sweet on trial.—Michigan Exper. Station.

***Lambert (Late.)** One of the largest of all sweet cherries and the best in quality. Dark, purplish red, turning almost jet black when ripe; firm, rich, juicy and of splendid quality. Tree rugged, strong grower and bears enormous crops. Prize winners everywhere. Popular wherever sweet cherries grow. There is an immense market for this fruit, fresh, canned or preserved. NCS. **Eating, Cooking, Canning, Market.**

Weighed in the balance and not found wanting in size, firmness, flavor, beauty or color. Unequaled in size, flavor superior to any of the other varieties, having firmness and keeping qualities that carry it thousands of miles in perfect condition. Its beauty gives it first place and highest price in any market.—Oregon Hort. Society.

Certainly a magnificent cherry; the largest received this season.—S. B. Heiges, U. S. Department of Agriculture.

Wonderful Montmorency Cherry Orchard (all Stark Trees), Bore 2,350 Gallons per Acre. A Marvelous Money-Maker.

***Bing (Late.)** One of the most delicious sweet cherries, and on the Pacific Coast is considered one of the most profitable and best shippers. Seems to succeed East better than most sweets. Tree hardy, foliage heavy, productive; should be followed by Lambert, which ripens later. Both these great sorts are the favorites in all sections where sweet cherries are grown. NCS. **Eating, Cooking, Canning, Market.**

Plant More Cherries. Large, sweet, big black Bing and Lambert cherries are what we should encourage the growers to plant. Some of the large shippers told us to urge our fruit-growers to plant more cherries, as those grown here are the best in the world and can reach the large markets from six weeks to two months after the California cherries have arrived.—A. J. Breitenstein, Missoula Co.

Napoleon Cherry



Cherries





Plums a Century's Test Prove Best!

BIG, gorgeous colored plums—appealing to the eye and satisfying to the appetite. Plums of Gold! Red plums! Blue plums! Plums of royal purple! Plums "big as little peaches!" Plums packed with a sweetness that cannot be described! Plums for everyone—every-

where. Be sure to plant some in your home orchard. The plums listed on pages 18 and 19 are the best we have found in over a century's search and test. Those varieties marked with star (*) are especially desirable.



****America** *Very Early—Hybrid.* A full Brother of Gold, the Sensational \$3,000.00 Plum. Same parentage—a cross between Burbank (Japanese) and Robinson (Native). From the far-reaching experimental hybridizing of 20,000,000 crossbred seedlings by the great scientist, Luther Burbank came two grand plums—Gold and America; it was then plum growing received its greatest impetus. America is large, glossy coral red—one of the most beautiful and delicious plums ever grown. In our orchard it is the one variety that can always be depended on for a crop. Tree large,

very vigorous, thoroughly hardy, bears extremely young, and bears enormous crops every year. Succeeds everywhere. **Eating.** **Cooking.** **Market.** NCS. "America is almost phenomenally free from rot."—Plums of New York. "Sturdy grower, exceptionally hardy, blooms late, scarcely ever fails a full

crop; good quality and does not rot."—E. H. Riehl, Ill. Exp. Sta. "Certainly a gem; heavy bearer, practically free from disease; delicious."—J. Williams, Bristol Co., Mass. "Uninjured by 55 degrees below zero."—R. J. Williams, Elmside, Quebec. **\$4.00 Per Bushel.** **Heads the List as Usual.** Bent to the ground

with large, handsome fruit. Visitors can scarcely believe their own eyes. Blooms late, scarcely ever fails to bear full. 8-year trees bore 3 bushels each that brought \$4.00 per bushel. Good quality and does not rot. Sturdy grower and exceptionally hardy.—E. H. Riehl, Ill. Exp. Sta.

***Abundance** *Early.* Large, bright cherry red, Japanese plum. Firm, sweet, excellent quality, ships well. Tree hardy, healthy, productive; rots less than Burbank. Should be planted in every home and commercial orchard. **Eating.** **Cooking.** **Market.** NCS.

***Burbank** *(Mid-Season, Japanese.)* Richly colored red plum, yellow, mottled and dotted. Large, round, handsome, sweet, fine quality. One of the most popular Japanese sorts; but should be thinned to prevent rot. Very productive. NCS.

***Big Mackey Damson** *Mid-Season-European.* A true freestone. Largest, best of Damsons; originated in Pike Co., Mo., and known locally as Big Mackey. Deep purple, juicy, rich, small stone, fine for preserves. Tree upright, hardy, bears enormous crops, with little or no care, free from insects and diseases. **Eating.** **Cooking.** **Market.** NCS. Introduced by Stark Bro's.

***Omaha** *Mid-Season-Hybrid.* Originated in Nebraska, on the grounds of a famous plum authority—Theodore Williams—who originated many plums. He considered Omaha best of all, and requested us to introduce it. Very large, almost perfectly round, dark rich red, pit small, flesh meaty, sweet and delicious. Tree as sturdy and hardy as an Oak, rather spreading in growth, bears tremendous crops every year. It is the plum for everywhere—east, west, north, south. **Eating.** **Cooking.** **Canning.** **Market.** NNCS. Introduced by Stark Bro's.

When we introduced Omaha, Mr Williams wrote: No other plum in existence is so cosmopolitan as Omaha; it fruited from Alberta (Canada) south to the Gulf; thrives in Vermont and west to the Pacific.

***INDIAN BLOOD (Duarde).** *Mid-Season.* Large egg-shaped, brownish red plum, flesh red clear to pit, quality good. Tree upright, good grower, hardy. Beautiful. Sells well. **Eating.** **Cooking.** **Market.** NCS.

***WILD GOOSE IMPROVED** *Mid-Season.* Very bright red, deliciously sweet and juicy. **Cooking.** **Canning.** **Market.** NNCS.

***SHROPSHIRE DAMSON** *Mid-Season.* Most widely known of all the Damsons. **Eating.** **Canning.** **Cooking.** **Market.** NCS.

***Mammoth Gold** *Very Early—Hybrid.* A great big luscious, red blushed, golden plum originated by Geo. W. Endicott, Villa Ridge, Ill., and purchased by us. Fruit beautiful, delicious and sweet clear to the pit; resistant to rot. Tree hardy, thrifty, upright, bears young, regularly and heavily. **Eating.** **Cooking.** **Market.** NCS. Introduced by Stark Bro's.

We do not recommend Mammoth Gold for planting north of the Missouri-Iowa line, but America is hardy North. "Literally covered with large, beautiful plums—some as large as a small peach."—C. M. Fette, Marion Co., Mo.

***SANTA ROSA** *Very Early.* Produced by Luther Burbank. Won Gold Medal at Lewis and Clark Exposition. Handsome, round, dark crimson plum. Immense size, splendid quality. **Cooking.** **Eating.** **Market.** NCS.



Omaha



America Plum
"Luther Burbank's Great Success"

Mammoth Gold



"Photo of my 2-year-old Early Gold (Shiro) bearing 3 gals. luscious plums." They are all your Year Book claims them to be."—J. J. Rosenberger. Always bears heavily and brings top market prices.

"Have two Gold plum trees, picked 130 gallons from each tree."—J. B. Broughton, New Madrid Co., Mo.



Gold plum 1 1/2 years old in orchard of Mr. Bolley—showing fast-growing qualities.

★★**GOLD**
The \$3,000.00
Plum

Introduced by Stark Bro's



Branch of Gold Plums grown in orchard of S. Hayden, Pike Co., Mo.

Gold (Shiro) Our \$3,000 Plum

OUR great Gold, the \$3,000.00 plum, has created a greater sensation and made more friends than any other of the many valuable plums we have introduced in the last 100 years. We consider it the most valuable Mid-Season plum, just as much so as its great Brother, the America, is the best Very Early plum, ever introduced.

Luther Burbank, who originated Gold Plum says—"The most remarkable fruit known—the best plum ever produced." Fruit clear, semi-transparent, light golden yellow, later nearly overspread with a hazy carmine blush. When fully ripe a transparent light cherry red. Tree does best in chicken yards and on moderately dry thin or clay soil; rather dwarfish growing, but strong, healthy and one of the hardiest.

We paid Burbank \$3,000.00 for this wonderful fruit and Trade-Marked the name. Buy the genuine Stark Gold from Stark Bro's, the Exclusive Introducers and Owners. Succeeds everywhere—from the Atlantic to the Pacific, from the Great Lakes to the Gulf. **Eating. Cooking. Market. NCS. Introduced by Stark Bro's.**

"Not a bud injured. All right even north of LaCrosse and Osh-

kosh."—H. Floyd, Winnebago Co., Wis. "Four-year trees have borne three crops; fully equal to your pictures. Finest plums in existence."—Major Baird, De Kalb Co., Tenn. "From one 5-year old Gold plum, picked 81 1/2 gal. fine plums."—E. N. Smith, Green Co., Mo. "Stands our winters like our hardiest natives."

★**Early Gold (Shiro).** (Very Early, Hybrid.) Pure transparent, golden yellow plum. Excellent quality—a huge honeydrop. This is another introduction of Luther Burbank's that has made good.

A loaded tree is a glorious sight. Quality ranks high. No plum we know has more good points and fewer faults. NCS.

"Trees all loaded, some had as much as 3 bu. per tree. A good many come to see my Stark Trees and ask where I got such fine ones."—Wm. Girard, White Co., Ind.

One tree brings \$17.00. "From one 11-year-old Early Gold plum tree I got 8 1/2 bushels of plums."—J. D. Schwimmer, Ford Co., Ill.

★**Red June** Very Early — Japanese. Dark cherry red, very

showy. Named and introduced by us 30 years ago. Free from rot; does not drop. Tree healthy, hardy, sure cropper. Fine canning variety. Most satisfactory Japanese plum. "Red June has not failed in 7 years."—John Cottle, Washington Co., Ohio. **Eating. Cooking. Canning. Market. NCS. Introduced by Stark Bro's.**

★**Stark Green Gage (Missouri)**

Mid-Season European. All plum lovers commend it as best of its type. Fruit large, juicy, greenish yellow, sweet, exquisite quality. Tree strong growing, bears immense crops regularly and is in every way satisfactory. We introduced it nearly 30 years ago. **Eating. Cooking. Canning. Market. NCS. Originated and introduced by Stark Bro's.**

The Finest Pears You Can Grow

★**Honey Dew** Early Fall. A wonderful pear from the grounds of

Mr. Raabe, well-known Ill. orchardist. The fruit is large, almost round—like a big apple; golden yellow, almost covered with rich russet. Flesh tender, crisp, literally overflowing with juice. "Sweet as honey-dew" (hence its name). As firm as Kieffer, and as satisfactory for shipping, but far superior for eating and canning. Tree fast grower, enormously productive, has never blighted. Planted everywhere. NCS. **Eating. Cooking. Market.**

★**Fame** Late Summer. There is no more delicious pear than this; juicy, melting, sweet and rich. Seeds few, almost no core; large, blushed yellow. Hardy, strong, long-lived tree; young bearer, does exceedingly well as a dwarf. Blight resistant. Originated in Nor. Ark. Introduced by us. **Eating. Cooking. Market. NCS.**

★**Gold Nugget** (Winter Sugar Pear) Gold Nugget pear has a thick protecting skin—juicy, fine-grained, sweet flesh, large as Bartlett, but more round in shape. Ideal for packing and shipping.

The originator, Mr. F. H. Davis, of Esmeralda, Cal., writes: "The Gold Nugget trees blight resistant. Two other trees not over 30 feet from the original tree are practically dead from blight. But Gold Nugget is absolutely free from it, and now 40 years old." NCS.

★**Bartlett** Summer. A great favorite. Large, rich, golden yellow with soft blush; juicy, melting, with a rich, indescribable flavor. One of best for canning and shipping. Tree strong grower, bears young, large crops regularly. NCS. **Eating. Cooking. Market.**

★**Kieffer** Winter. Most widely planted pear. Large, rich, golden yellow, sometimes tinted red. Fine for canning and baking, only fair quality for eating fresh. NCS. **Eating. Cooking. Market.**

★**Stark Seckel** (Sugar Pear). Late Summer. A select strain of this wonderful pear. Medium size, beautiful yellow; spicy, honeyed flavor. Tree hardy, thrifty; blights little. Succeeds in all pear sections. NCS. **Eating. Dessert. Cooking.**

★★**Lincoln** Late Summer. The pear we find worthy of our highest commendation—the genuine true Lincoln—of Illinois. Fruit large, clear, beautiful yellow, sometimes blushed—marvelously beautiful, ideal shipper; quality superb—even better than Bartlett, the leader for many generations. Tree remarkably blight resistant, heavy cropper, long lived—original tree now over 80 years old and still bearing. NCS. **Eating. Cooking. Market.**

Ours is the True Lincoln. "Bought Lincoln trees from 3 nurseries and have 3 different pears, all labeled Lincoln. Yours are the only genuine Lincoln pear trees."—Jas. Hoaselman, Platt Co., Ill.

★**Anjou** Late Fall. Large, handsome, yellow pear blushed dull red; richest flavor. Tree upright, good bearer, strong grower, hardy, bears young, blooms late, remarkably free from blight. Succeeds everywhere. NCS. **Eating. Cooking. Market.**

★**Stark Tyson** (Very Early Summer.) Looks like Seckel, ripens extremely early, medium size, yellow, shaded russet, sweet, juicy, perfumed, excellent. Tree hardy, long lived, very free from blight. We propagate from select strain from Henry Wallis, St. Louis Co., Mo. NCS. **Eating. Cooking. Market.**

★**Duchess** (Angouleme) Fall. Extremely large, often weighs over a pound; dull yellow, excellent quality. Tree long lived, healthy, hardy, bears extremely young, produces crop every year. NCS. **Eating. Cooking. Market.**

★**Garber** (Fall). Somewhat coarse, but fair quality. Remarkably free from blight; wonderful bearer. NCS.

★**Winter Nelis** (Winter). Delicious greenish yellow pear; fine grained, juicy; tree hardy, thrifty. NCS.

★**Dwarf Pears.** We offer the following varieties as dwarfs: Anjou, Bartlett, Comice, Duchess, Fame, King Karl, Stark Seckel and Triumph.



Lincoln



Stark Delicious Grape

**Stark Delicious

Greatest of All Red Grapes in the U. S.

UNTIL we introduced Stark Delicious there was no red grape of real fine quality that had also a healthy, productive vine. Quality alone will not make a grape popular with the growers. It must be produced in sufficient quantity to get the public acquainted with it, as is the case with Concord. Stark Delicious is doing this. Its color is so attractive and quality so delicious that it brings top prices on the market. Of all the grapes we have tested in our over a hundred years' experience, Stark Delicious is the most beautiful one we have ever seen, and in quality, no other grape—red, golden or black—can compare with it, except Goethe and Delaware. Goethe has weaknesses, and Delaware is small and is also difficult to grow in some sections. From every standpoint Stark Delicious is supreme. It is to grapes what the Stark Delicious apple is to apples—the most wonderful red grape grown. In flavor it is delightfully sweet and rich. Bunches are large, long shouldered and make a wonderful appearance on the market. It is a splendid shipper. The berries average about the size of Concord and it ripens in Mo. and Ill., sections at just the right time for the markets. Years ago, before prohibition, it was greatly prized for wine-making, excelling both Delaware and Catawba. For grape juice it is ideal, making a beautiful champagne colored juice with a flavor that is obtainable from no other grape. In our grape vineyards and grape Nurseries it is the youngest bearing one we have found. Many grafts bear 2 or 3 good bunches the same season they are set in the Nursery. It is splendidly hardy, both in wood and bud, healthy, and has a luxuriant foliage that hangs on very late. All in all, Stark Delicious is a grape of great beauty and most excellent quality. It is a heavy pollen producer and is self fertile. It does not need any other variety to make it bear. Planted with other sorts it will make them bear heavier crops.

Hon. Geo. W. Endicott, famous Ill. orchardist, Villa Ridge, Ill., said: "Stark Delicious grapes are hardy both in wood and bud, and are good growers. It is the best variety to pollinate self sterile sorts. Blooms same time as Eclipse and fine to plant with it. Like them both for market, good quality and heavy fruiting."—NCS Eating. Jelly. Grape Juice. Market. Introduced by Stark Bro's.

***Lucile** *Early Red.* A dark red grape, medium to large berry and bunch, excellent quality, keeps well and ships well. In vigor, health, hardiness, productiveness, it is surpassed by no other variety, and it is practically immune to fungous diseases. It is one of the most beautiful hardy grapes and it sells at high prices. NCS.



Lucile—a ruby-red, beauty grape—sugar sweet—very hardy—brings big market prices.



Grapes

Big, Luscious GRAPES

For the Table and Grape Juice

The grape is the easiest fruit to grow. The vines take little room, thrive despite neglect and every year produce their wealth of beautiful, health-giving fruit. With the roots in any old nook, you can lead them away in any direction to provide a grateful shade for the pump, or for a restful seat, a border for a walk or climbing on the wall or house. East, west, north or south, on hill or in valley, on poor soil or rich, the grape grows, thrives, bears. It never disappoints. Plant a few vines or a large vineyard—make your own grape juice (Stark Delicious grape best for juice), jams, marmalade, jelly, and have plenty to eat fresh from your own vines.

Campbell's Early

Early Black. A black early grape of great size that ripens about two weeks ahead of Concord, but the ripening season is variable, ripening through a long season, and is generally marketable slightly earlier than Worden. Keeps and ships well. Quality is excellent—not foxy, somewhat vinous, nearly sweet. Vine vigorous, productive, hardy, with thick mildew-resisting foliage. Known and grown throughout the grape regions of the United States. Compared to Moore Early it averages larger but is hardly as valuable commercially, however, this magnificent grape should be in every home collection, and planted moderately in all commercial vineyards. Ideal for grape juice. It is of the Concord type—a seedling of Moore Early, and has inherited many of Moore Early's good vine characteristics. A good grape. NCS.

Banner

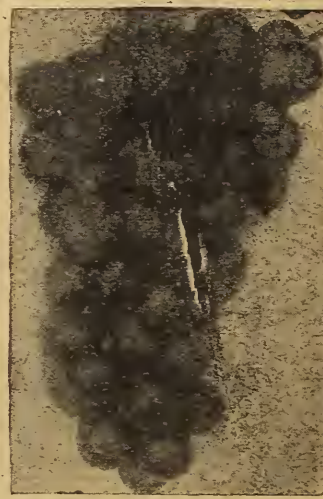
A delicious red grape introduced by us from the vineyard of Joseph Bachman of Ark. Bunches large, solid, shouldered; berries medium size and cling tenaciously to the bunch. A magnificent grape for the home vineyard and for market. NCS. Eating. Jelly. Market.

Agawam

A sweet, rich, finely-flavored dark red grape borne on large bunches; vine hardy, vigorous, bears regularly and heavily; ripens just after Concord. NCS. Eating. Jelly. Market.

*Lutie

Mid-Season Red. A rich red grape that is good everywhere and under all conditions. Vine vigorous, heavy bearer; fruit delicious in quality and seldom rots. E. H. Riehl, Ill. authority, says: "Bears full crops when others fail; one of the most profitable varieties I have ever grown. Don't hesitate on Lutie." NCS.



Lutie—Rich Red, Handsome Bunch—One of the Sweetest and Best Red Sorts.

Rhubarb (Pieplant).

Grows successfully everywhere. Beds will last for years without renewing. We offer: **Myatt's Linnaeus.** Large stalk, tender and mild. **Victoria Giant.** A standard sort

Cynthiana

A black late grape; heavy yielder; small, spicy. NCS. Eating. Jelly.

Catawba

A favorite red grape; quality, best keeping. CS. Eating. Juice. Jelly. Market.

Worden

Splendid black grape. Hardy, healthy, productive like Concord. Larger, better quality, 10 days earlier. Sometimes ripens irregularly. One of the best black grapes. Large bunch and berry, excellent quality. Thousands of acres are being planted. Mr. Fullerton, L. I., N. Y. Exp. Sta., writes: "Worden positively paralyzed us with its yields, eclipsing everything in size and perfection of bunch and berry, which were really colossal compared to Concord. NCS. Eating. Jelly. Grape Juice. Market."



Worden—One of the Greatest Money-Making Black Grapes. Handsomer, Better than Concord.

Woodruff (Late).

A handsome red grape, large bunch. Eating. Jelly. Market. NCS.

Asparagus

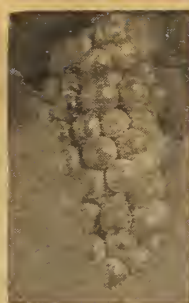
We offer: **Bonvalette's Giant.** Rapid grower; little damage from rust. **Conover's Colossal.** Large, early, tender. **Palmetto.** A standard large sort. **Mammoth White.** White, or very large light stalks; large and tender.

Horseradish

Pre-fers a deep, loose, loamy soil. We offer superior quality roots.



MOORE EARLY
Black grape that ripens two weeks earlier than Concord



DELAWARE
Bright red grape of highest quality



BRIGHTON
Brilliant red, large, extra sweet

***Diamond** (Moore's Diamond) **Early White.** We recommend Diamond as the best hardy white grape. Berry and bunch large. Vine hardy as dependable as Concord. "The Grapes of New York," greatest work on grapes ever published, says "When to its desirable fruit characteristics are added earliness, hardiness, productiveness and vigor, it is surpassed by no other green grape." NCS.

Diamond Grape

★★Stark Eclipse (Trade Mark)

Earliest Black. The earliest of all black grapes—ripens a week to 10 days ahead of Moore Early. Best of all varieties for grape juice. Bunch and berry almost as big as Concord, handsome, compact and hangs tenaciously to the vine. The highest quality early grape; rich, sweet, and melting, does not crack in wet weather nor scatter from the bunch. Vine healthy, hardy, vigorous grower, with exceptionally good foliage which hangs longer than almost any other variety. It originated on the grounds of Mr. E. A. Riehl, Ill. Exp. Sta., Alton, Ill., a nationally known authority on grapes. We introduced the variety after exhaustive tests and it has never disappointed us. After fruiting the variety for a number of years, Mr. Geo. E. Endicott, famous horticultural authority, wrote us:—"Eclipse is the best early grape that has been produced in this country so far as I have been able to learn from 50 years' experience and testing more than 150 varieties." Ohio State Exp. Station finds Eclipse to be the ideal grape for making grape-juice and they have issued a report on this subject. It is the greatest Early Grape. NCS. Introduced by Stark Bro's



Moore Early *Early Black.*

A black grape similar to Concord in appearance and quality, but ripens two weeks earlier and is the leading standard black grape of its season. Bunch and berry large, quality good. Vine healthy, vigorous, hardy, heavy bearer. Succeeds everywhere. Ideal for grape juice. NCS.

Delaware *A fine bright red grape of very highest quality.*

Ripens early and reaches the markets when grapes are in greatest demand. Delaware, because of its unsurpassed quality, always commands premium prices. Vine hardy, vigorous. "Grapes of New York," says—"It is the American Grape par excellence." NCS. **EATING. JELLY. MARKET.**

King *(Giant Concord).*

A black grape that is much larger than Concord, more vigorous and better in quality—not subject to rot. Steadily gaining in favor. NCS. **EATING. JELLY. GRAPE JUICE. MARKET.**

Niagara *Best known white grape.*

Famed as "Grand Father" of Stark Delicious. Ranks with old reliable Concord in vigor and productiveness. Widely planted. Bunch large; handsome, juicy and a fine flavor. The white grape for the millions. We recommend it for commercial plantings everywhere. NCS. **EATING. JELLY. MARKET.**



CONCORD
The "Old Standby" noted throughout the world

***Brighton** *Bright red, heavily shouldered; large bunch; one of the sweetest and most delicious.*

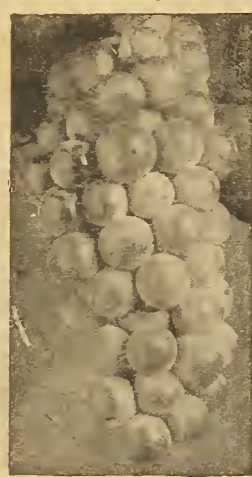
Known everywhere. Ripens before Worden. It adapts itself to most any soil, is always productive; a good strong growing, hardy vine. Should be planted with other sorts for pollenization. Diamond, Worden and Moore Early are ideal for this purpose. NCS. **EATING. JELLY. MARKET.**

***Hicks** *Most valuable black grape. Larger and better than Concord.*

Concord type but a better grower and a heavier bearer. Especially featured and highly recommended by N. Y. Exp. Station. A grape of great value. Commercially introduced by Stark Bro's. NCS. **EATING. JELLY. GRAPE JUICE. MARKET.** "Vines are stronger growth, earlier and more productive than Concord." —U. P. Hedrick, Horticulturist, N. Y. Exp. Sta.



HICKS
Highly recommended by N. Y. Experiment Station



NIAGARA
Best known white grape—vigorous—productive

Requires little work—almost sure crop every year—plenty to eat, to can and to sell, too.

Herbert

Large, black. Superior table grape. Splendid shipper. NCS. **EATING. JELLY. MARKET.**

Berries

Every house should have a good "berry patch."

Flaming Giant Raspberry

(RED) World's Record Red Raspberry. Stands 15 degrees below Zero without injury. Bears twice as much as Cuthbert and Sunbeam. Immense size berries—often three-quarters inch across. Very limited stock on hand. Last year sold out before March 1.

Other Raspberries

We can also supply **Black Pearl** (Early Black), **Cardinal** (Mid-Season Red), **Columbian** (Mid-Season), **Cumberland** (Early Black), **Cuthbert** (Mid-Season Red), **Kansas** (Late Black), **King** (Early Red), **Plum Farmer** (Mid-Season Black Cap), **St. Regis** (Everbearing Red).

Blackberries

We recommend and sell **Blowers** (Everbearing), **Early King** (Early), **Early Harvest** (Very Early), **Eldorado** (Mid-Season), **Mesereau** (Mid-Season) and **Snyder** (Mid-Season).

Dewberries

We can furnish **Austin** (Early) fine for Central States and South—and **Lucretia** (Early) the best and most dependable of all dewberries.

Mulberries

We sell **Abundance**—**Downing**—**Gorgeous** (trade mark) double the size of any other mulberry and our choice—**Monarch** and **New American**.



At New York Exp. Station

"Vines of Eclipse have fruited at this station for several years. Eclipse is very similar to Concord, differing chiefly in earliness and in a higher degree of quality. The vines make a most satisfactory growth, appear to be hardy healthy and productive."—O. M. Taylor, Foreman in Horticulture, New York Experiment Station,

Stark Eclipse Introduced by Stark Bro's

Nut Trees

FILBERT, AMER. (*Corylus*). Hardy shrub, 7 ft. high, bears good quantity.

HICKORY, MO. MAM.—Grows very tall. Good quality, large nuts.

HICKORY, SHELLBARK—Shaggy bark, very large crops, fine nuts.

PECAN, MO. SEEDLING—Produced from big nut trees here. Hardy.

GRAFTED PECAN, STUART—Best paper shell pecan, vigorous, big yield.

WALNUT BLACK—(*Juglans Nigra*). Grows large—50 ft. tall. Produces high value timber. Prolific—large rich nuts.

Ornamentals—Roses

Climbing Roses

BALTIMORE BELLE (*Pink*) A well-known, old favorite, pink flowered climbing rose that withstands the winter and gives profuse blooms with little care.

CLIMBING AMERICAN BEAUTY (*Red*) A climbing rose that is hardy and vigorous. The flowers are very large, fragrant. Resemble American Beauty in form and color. An ideal climber.

DOROTHY PERKINS (*Pink*) One of the finest climbers for the porch, trellis, and hedge. Produces a wonderful profusion of beautiful, deep pink, fragrant flowers. It is probably the best known of all climbing roses.

EXCELSA (*Dark Red*) A thoroughly satisfactory climbing rose that has been called the "Red Dorothy Perkins." Produces a profusion of brilliant red flowers that, in contrast with its glossy foliage, gives a wonderful effect.

OTHER CLIMBERS—In addition to the ones described above, we grow and offer all the good varieties and refer customers to Price List for complete list.

Hardy Garden Roses—Bush Form

CLIO (*H. P.*) Flowers globular, flesh colored, shading to pink in center. Grows vigorously, blooms freely, and is a most satisfactory variety.

CONRAD F. MEYER (*H. R.*) Flowers of a large size, clear, silvery, rose color. Vigorous, hardy and everblooming.

EUGENE FURST (*H. P.*) A marvelously beautiful, deep red rose that is most valuable, and is recommended for every collection.

GEN. JACQUEMINOT (*H. P.*) The old-time favorite crimson rose. The flower is large, full, regular, and is known for its beauty all over America. Succeeds under all conditions and with little care.

J. B. CLARK (*H. P.*) A deep scarlet rose shaded with darkest crimson. A vigorous grower, profuse bloomer, popular.

KILLARNEY (*H. T.*) It is a seashell pink rose that is one of the most popular for forcing and for cutting. A free bloomer.

MAD. CAROLINE TESTOUT (*H. T.*) Flowers silvery, rose color with deeper center. It is a sturdy grower and blooms freely.

PAUL NEYRON (*H. P.*) The largest of all roses. Has been called the "Paeony Rose." It is a deep rose color, of immense size, with stout stems and very few thorns. Blooms freely, is thoroughly hardy, and is recommended for every garden.

SNOW QUEEN (*H. P.*) Often called the "White American Beauty." It is a pure white rose of large size and probably the best and most satisfactory white variety. The plant is hardy, vigorous, blooms profusely, and is satisfactory in every particular.

OTHER BUSH ROSES—In addition to the ones described above, we grow and offer all the other good kinds, and refer customer to Price List for complete list.

Hedge Plants

PRIVET, AMOOR RIVER, NORTH (*Ligustrum Amurence*) The ideal hedge plant, perfectly hardy for all climates, shiny foliage, white flowers. Makes a beautiful hedge that can be pruned to any desired shape without injury. In Hedges we also offer Japanese Barberry, California Privet, Common Privet, Ibota Privet, Regal's Privet and Spirea Van Houttei.

Climbing Vines

AMERICAN IVY (*Ampelopsis Quinquefolia*) Fine for covering walls and trellises. Beautiful green divided leaves which turn bright crimson in Autumn.

OTHER CLIMBING VINES—We also grow and offer a large number of climbers and refer customers to Price List for complete list.

PAEONIES—We grow and offer all the best varieties. Customer will find list with brief descriptions in Price List.

Enjoy the luxury of a Stark Rose Garden. It costs so little to have one

Excelsa



Conrad F. Meyer

Killarney



Paul Neyron

Climbing American Beauty



SNOW QUEEN



Shrubs - Shade Trees



ELM, AMERICAN (*Ulmus Americana*) The most satisfactory, most beautiful of all native American trees, for the yard, street and park. It has a graceful, slender growth, with branches that droop slightly. Adapted to the entire country.

MAPLE, NORWAY (*Acer Platanoides*) The most widely planted of the hard maples. Growth very compact, head almost round, making a dense shade. Leaves, dark green until Autumn, when they turn to gold.

MAPLE, SILVER LEAF (*Acer Dasycarpum*) Probably the most extensively planted of all shade trees. Of rather spreading growth. Valuable for park, lawn and avenue. The growth is rapid. Hardy, thrives in all soils.



POPLAR, CAROLINA (*Populus Monilifera*) This is the most popular and widely planted of the Poplars. Where quick shade is desired, nothing surpasses it. It is used extensively for lawn, street and park planting, and for windbreaks.

POPLAR, LOMBARDY (*Populus Nigra Fastigiata*) A rapid growing tree of slender, upright habit. The most popular of all trees of columnar growth. Often reaches a height of 80 feet.

OTHER SHADE TREES—In addition to the ones described above, we offer all other good shade trees; our list is complete. We refer customer to Price List, where complete assortment may be found.

Ornamental Shrubs

BUTTERFLY BUSH (*Buddleia Var. Magnifica*) A beautiful shrub, 4 ft. high, with large clusters of lilac colored flowers which attract butterflies in large numbers.

RED STEM DOGWOOD (*Cornus Alba Siberica*) The very finest of the red stemmed shrubs, attaining a height of 8 ft. White flowers followed by red berries in Autumn. Beautiful for border planting.

DEUTZIA LEMOINEI The hardiest Deutzia bush. White flowers in abundance on its slender branches. Fine for mass planting, or as a specimen plant.

WEIGELA ROSEA (*Diervilla Florida*) A graceful and beautiful shrub, 6 ft. high. Spreading, arching branches. Rose colored flowers in early June. Grown everywhere, very beautiful. Photo below.

GOLDEN BELL (*Forsythia Suspensa*) A graceful, drooping shrub, with conspicuous yellow flowers in great profusion. Very early. Excellent for front of border, or entrance planting.

Philadelphus Cor. (Mock Orange-Syringa) to left.

MOCK ORANGE (*Philadelphus Coronarius*) Creamy white, very fragrant flowers in May and June. Shrub grows 10 ft. high. One of the most popular of the old-fashioned shrubs. Photo to left.

WHITE KERRIA (*Rhodotyus Kerroides*) Beautiful white flowers late in May, followed by black seeds which cling all winter. Light foliage turning golden yellow.

SPIREA BILLARDII A pink-plumed Spiraea, hardy, 6 ft. high. Long slender branches, densely clustered flowers, showy and attractive. Photo below.

SPIREA VAN HOUTTEI (*Bridal Wreath*) One of the best, most popular, most widely known of all ornamental shrubs. Will grow 6 ft. high. Clusters of small, white blossoms in May and June—a huge mass of wonderfully beautiful flowers. See photo.

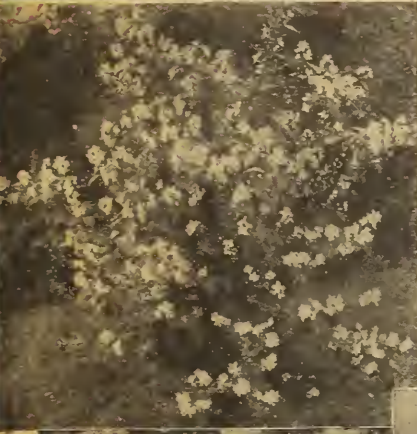
SNOWBALL (*Viburnum Opulus Sterlis*) The magnificent old Snowball of our Grandmother's garden. Its round, snow-white flowers bloom just in time for Decoration Day. Photo below.

LILAC We grow and offer the common purple and the common white varieties which have been popular in American gardens for many generations. We also grow all the best budded varieties and refer the customer to the Price List for full list.

HYDRANGEA ARBORESCENS GRANDIFLORA Known as "Hills of Snow." Immense white balls of flowers all summer. Shrub erect, 4 ft. tall. Photo below.

OTHER SHRUBS In addition to the shrubs described above, we grow and offer scores of others. We have one of the most complete lists grown in any American nursery. Customer is referred to following and to Price List for complete assortment.

- Aralia spinosa* (Hercules Club)
- Aralia pentaphyllus* (Angelica)
- Berberis Thunbergii* (Barberry)
- Calycanthus floridus*
- Cercis canadensis* (Red Bud)
- Deutzia gracilis*
- Deutzia scabra* (P. of Rock.)
- Diervilla, Eva Rathke* (Red)
- Elaeagnus angustifolia*
- Forsythia fortunei* (Golden Bell)
- Hibiscus* (Assorted Colors)
- Hibiscus Syriacus*
- Hydrangea pan. grand.*
- Lonicera fragrantissima*
- Lonicera Mor.* (Bush Honey-suckle)
- Lonicera Tat. rubra*
- Philadelphus aureus*
- Philadelphus Lemoinei*
- Prunus triloba* (Fl. Almond)
- Rosa rugosa* (Jap. Rose)
- Rhus colinus* (Smoke Bush)
- Rhus typhina laciniata*
- Sambucus aurea* (Golden Elder)
- Spiraea Anthony Waterer*
- Spiraea Opulifolia aurea*
- Spiraea Thunbergii*
- Symphoricarpos racemosus*
- Syringa persica* (Persian Lilac)
- Tamarix Africana*
- Viburnum dentatum* (Arrow-wood)
- Viburnum lantana*
- Viburnum op.* (H. Bush Cranberry)



Hydrangea P.G., large flowered, white and pink - often 10 inches long (At left.)

Spiraea Van Houttei (Below.) The one best all purpose shrub.



Spiraea Billardii, large pink plumes. (Above)



Snowball (Vib. Op. Ster.), the old favorite that increases in popularity every year. Hardy and vigorous. (Above.) Hydrangea Arbor. Ster. (Everblooming) Great masses of large bloom throughout the summer. (At right.)



Stark Delicious Tree Half-a-Century Old and Still Bearing



Original 50-Yr.-Old Stark Delicious Tree

With Unsurpassed Record for Annual Crops of High Quality Fruit Since a Young Tree. Bore every year but once. **Long-Lived—Sturdy—Vigorous—and Still Bearing!** Standing on bleak prairies of Northern Iowa, it has fought storms and zero weather for half a century. This grand old tree is the only sort in entire orchard planted at that time which for half a hundred years has successfully combated the elements. Proving, as Prof. Whitten, Missouri State Hort., said, "Stark Delicious is resistant to canker and other trunk diseases."

ORIGINAL Stark Delicious Tree—“FATHER TREE” of all Stark Bro’s ORIGINAL TREE STRAIN Stark Delicious Trees. This Grand Old 50-Year-Tree Has Never Failed to Bear Except Once. Perpetual Exclusive Propagating Rights Owned by Stark Bro’s.