



W. A. B. C. D. E. F. G. H. I. J. K. L. M. N. O. P. Q. R. S. T. U. V. W. X. Y. Z.



W. A. B. C. D. E. F. G. H. I. J. K. L. M. N. O. P. Q. R. S. T. U. V. W. X. Y. Z.

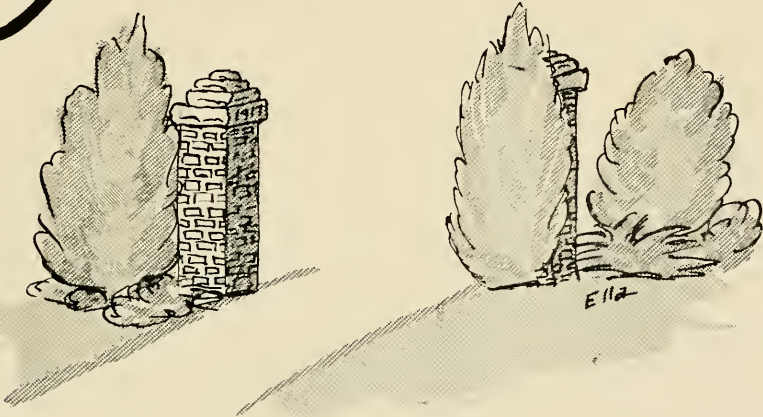
MRS GENEVIEVE PERRY





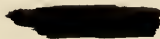


# Presenting



## *The Oak* 1949

**Louisburg College**  
**Louisburg, North Carolina**





**Daniel Wilbur Jones**  
*Editor*

**Arthur H. Davis**  
*Business Manager*

**Richard W. Griffin, III**  
*Faculty Adviser*

# *Foreword*

THE OAK of 1949 is presented to you to serve as a reminder of your days here and to portray the college and student activities. We earnestly hope that it will serve now and in later years as a door through which you may enter to reminisce the experiences, the fun, and the life you have enjoyed at Louisburg.

## **CONTENTS**

ADMINISTRATION AND FACULTY

CLASSES

ACTIVITIES

ATHLETICS

FEATURES

ADVERTISEMENTS

# Dedication

Simplicity, humility, understanding—these words describe our beloved science teacher, Dr. Randolph. His dry wit and kindly humor always bring a smile or laugh to relieve the endless procession of chemical equations. In appreciation of his devotion to science, to education, to Louisburg College, and to humanity, we dedicate THE OAK for 1949 to DR. EDGAR EUGENE RANDOLPH.





EDGAR EUGENE RANDOLPH  
A.B., M.A., Ph.D.



PRESIDENT SAMUEL M. HOLTON

# Administration



LULA MAE STIPE  
A.B.  
*Dean of Women*



SCOTT BOYD  
A.B., M.A.  
*Dean of Men*



RUTH G. BOYD  
*Registrar*



GENEVIEVE PERRY  
*Treasurer*



AVERITTE                      KELLY                      MERRITT                      TARPEY                      I. MOON  
 FOSTER                      N. MOON                      BLUMENFELD                      AMICK                      JOHNSON                      BOYD

## *Faculty*

MIRIAM AVERITTE  
 A.B., M.A.  
*Commercial Science*

MARION A. KELLY  
 A.B.  
*Commercial Science*

RUTH W. MERRITT  
 A.B., M.A.  
*English*

BETTY W. TARPEY  
 A.B., M.A.  
*English*

ISSAC D. MOON  
 A.B., B.Mus., M.A.  
*Fine Arts*

SARAH E. FOSTER  
 B.M.  
*Fine Arts*

NELLIE T. MOON  
 A.B.  
*Fine Arts*

ANNA BLUMENFELD  
 Ph.D.  
*Foreign Languages*

THOMAS C. AMICK  
 L.I., A.B., M.A., Ph.D.  
*Mathematics*

ELIZABETH JOHNSON  
 A.B., M.A.  
*Mathematics*

SCOTT BOYD  
 A.B., M.A.  
*Physical Education*

ELOISE HILL  
 A.B.  
*Physical Education*

EDGAR E. RANDOLPH  
 A.B., M.A., Ph.D.  
*Science*

ETHEL B. FINSTER  
 A.B., M.A.  
*Science*

RICHARD W. GRIFFIN, III  
 A.B., M.A.  
*Social Science*

DAN S. BOWERS  
 A.B., B.D.  
*Social Science*

LULA MAE STIPE  
 A.B.  
*Social Science*

SARAH K. PATTEN  
 A.B.  
*Librarian*

DORIS MILLNER  
 B.S.  
*Dietitian*

EDITH G. BOONE  
 R.N.  
*College Nurse*

NITA SINCLAIR  
*Assistant Dietitian*

CHARLYE ARNETTE  
 A.A.  
*Secretary to the President*

## Faculty

HILL RANDOLPH FINSTER GRIFFIN BOWERS  
 STIPE PATTEN MILLNER BOONE SINCLAIR ARNETTE

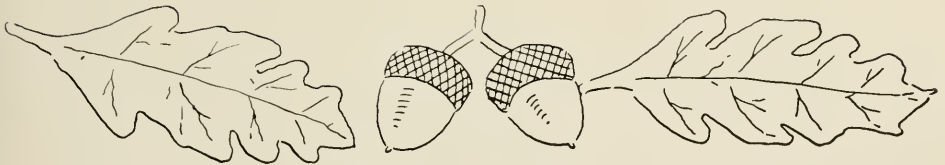


CAMPUS WINTER SCENE



CAMPUS SUMMER SCENE

# Classes



# SENIORS

First row, left to right:

WALTON N. BASS  
Goldsboro

Y.M.C.A.; I.R.C., President; Veterans' Club; OAK Staff; Phi Theta Kappa; Religious and Social Workers Club.

REUBEN W. BERRY  
Swan Quarter

Commercial Club, President; *Columns*; Y.M.C.A., Treasurer.

EIMER DEAN BEST  
Stumpy Point

I.R.C.; Religious and Social Workers Club, Dramatics Club; Y.M.C.A., President; Non Veteran's Club; Delta Psi Omega; Cheer Team; Student Council.

Second row:

ANNIE BELLE BLOUNT  
Mackeys

Y.W.C.A.; Physical Education Club, Secretary-treasurer.

JOHNY W. BONEY  
Raleigh

Jump Band.

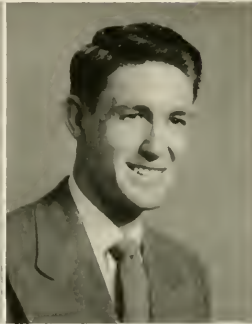
EDITH G. BOONE  
Nashville

Y.W.C.A.

BASS  
BLOUNT



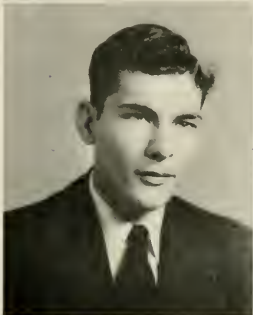
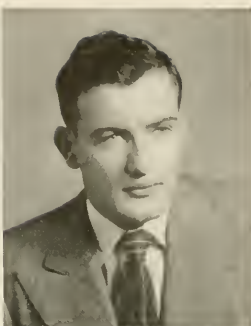
BERRY  
BONEY



BEST  
BOONE







BRADLEY  
BRYANT

D. BRYAN  
BURROW

L. BRYAN  
BYRD

*First row, left to right:*

MARGARET ELIZABETH BRADLEY  
Woodland

Y.W.C.A., Secretary; Glee Club; Physical Education Club; Religious and Social Workers Club, Secretary-Treasurer.

DAPHNE G. BRYAN  
Raleigh

Delta Psi Omega, President; Dramatic Club; Commercial Club; Physical Education Club; Y.W.C.A.; Glee Club; OAK Staff.

LOUIS M. BRYAN  
South Hill, Virginia

Veterans' Club; Y.M.C.A.; Dramatic Club; OAK Staff.

*Second row:*

EVERETT BRYANT  
Pittsboro

Monogram Club, President; Men's Student Council.

CLARENCE C. BURROW  
Troy

Baseball Team.

WILLIAM C. BYRD  
Warsaw

I.R.C.; *Columns*; Religious and Social Workers Club, President; Y.M.C.A.

## SENIORS

## SENIORS

First row, left to right:

PAUL E. BYRUM  
Edenton

Y.M.C.A.; Veterans' Club, Vice-President.

RAY DICKERSON CANNADY  
Raleigh

Beta Phi Gamma; *Columns*; Student Council, President; Y.M.C.A.; Veterans' Club.

ERNEST R. CARTER  
Powellsville

Y.M.C.A.; Veterans' Club; Student Council.

Second row:

RUTH CHANDLER  
Roxboro

Alpha Pi Epsilon, Vice-President; Y.W.C.A.; Physical Education Club.

MARIE CHOPLIN  
Youngsville

Intramural football.

W. W. CLARKE, JR.  
Hobbsville

Veterans' Club; Y.M.C.A.; Glee Club; I.R.C.; *Columns*; OAK Staff; Religious and Social Workers Club.

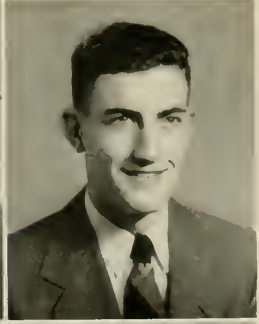
BYRUM  
CHANDLER



CANNADY  
CHOPLIN



CARTER  
CLARKE





COLLINS  
A. DAVIS

COPPING  
W. DAVIS

COUCH  
DAWSON

*First row, left to right:*

EDWIN E. COLLINS  
Elizabethtown

Intramural Football; Veterans' Club.

*Second row:*

ARTHUR H. DAVIS  
Fayetteville

OAK Staff, Business Manager; Veterans' Club.

TAYLOR R. COPPING  
Washington, D.C.

Jump Band; Dramatic Club

WILLIAM ROY DAVIS  
Goldsboro

I.R.C.; Tennis Team.

LIDA MAE COUCH  
Durham

Glee Club; Y.W.C.A.; Physical Education Club; Commercial Club; *Columns* Staff.

ROSEMARY DAWSON  
Wagram

Y.W.C.A., Secretary; Physical Education Club; Dramatic Club, Treasurer; Commercial Club; Delta Psi Omega, Treasurer; Alpha Pi Epsilon, Treasurer.

## SENIORS

## SENIORS

*First row, left to right:*

J.W. DICKENS  
Nashville

Phi Theta Kappa; Intramural Softball.

GEORGE DOZIER  
Nashville

Veterans' Club; Y.M.C.A.; Phi Theta  
Kappa; I.R.C.

BURWELL A. EVANS  
Tyner

Veterans' Club; Phi Theta Kappa, Vice-  
President; Intramural Softball.

*Second row:*

INA M EVANS  
Tyner

Phi Theta Kappa, Secretary-Treasurer;  
Delta Psi Omega.

JAMES E. FLEENOR  
Abingdon, Virginia

Men's Student Council; Veterans' Club;  
Columns; Y.M.C.A. Jump Band.

TOMMIE FRANKLIN  
Stem

Non Veteran's Club.

DICKENS  
I. EVANS

DOZIER  
FLEENOR

B. EVANS  
FRANKLIN





FRANSI  
 GODWIN

FULLER  
 GONZALEZ

GATTIS  
 GUTHRIE

*First row, left to right:*

ORLANDO FRANSI  
 Cardenas, Cuba

Commercial Club; Alpha Pi Epsilon,  
 President; Non Veterans' Club; Y.M.C.A.

HUGH MAC FULLER  
 Raleigh

Beta Phi Gamma, Vice-President; I.R.C.;  
 Non Veterans' Club, President; Men's  
 Student Government, Vice-President; *Col-  
 umns*, Managing Editor; Y.M.C.A.; OAK  
 Staff, Feature Editor; Intramural Soft-  
 ball; Intramural Football, Manager.

JULIA ANNE GATTIS  
 Raleigh

Peace College  
 Y.W.C.A.; OAK Staff; Commercial Club,  
 Vice-President; Physical Education Club;  
 Dramatic Club.

*Second row:*

RAY W. GODWIN  
 Kenly

Non Veterans' Club.

GILFREDO GONZALEZ  
 Vertientes, Cuba

Monogram Club; Baseball Team; Non  
 Veterans' Club; Basketball Team, Mana-  
 ger.

SAM LONG GUTHRIE  
 Wanchese

*Columns*, Editor; Beta Phi Gamma, Presi-  
 dent; Y.M.C.A.

**SENIORS**

## SENIORS

*First row, left to right:*

KARL M. HANCOCK  
Durham

*Second row:*

JAMES R. HATCH  
Aurora  
Veterans' Club.

BETTY MARIE HARDWICK  
Louisburg

I.R.C.; Y.W.C.A.

PERRY G. HAVNAER  
Hickory

Senior Superlative

T.H. HARRIS  
Siler City

Phi Theta Kappa; I.R.C.; Y.M.C.A.;  
*Columns*, Managing Editor.

WORTH SEYMOUR HOLT  
Apex

Phi Theta Kappa; Y.M.C.A.; I.R.C.

HANCOCK  
HATCH

HARDWICK  
HAVNAER

HARRIS  
HOLT





HOOPER  
P. JOHNSON

HUNT  
A. JONES

C. JOHNSON  
D. JONES

*First row, left to right:*

WILEY DWIGHT HOOPER  
Stumpy Point

GERALD HUNT  
Durham  
Non Veterans' Club

CLARENCE ERWIN JOHNSON  
Smithfield

*Second row:*

PAUL DANIEL JOHNSON, JR.  
Benson  
Non Veteran's Club, Vice-President.

ANNE JONES  
Neuse  
Y.W.C.A., Program Chairman; *Columns*;  
OAK Staff, Associate Editor; Beta Phi  
Gamma, Secretary-Treasurer; Phi Theta  
Kappa, Reporter; I.R.C., Secretary-Treasurer; Religious and Social Workers  
Club, Vice-President.

D. WILBUR JONES  
Raleigh  
*Columns*; Beta Phi Gamma; I.R.C.; OAK  
Staff, Editor; Student Council, Secretary-  
Treasurer; Non Veterans' Club.

**SENIORS**

## SENIORS

*First row, left to right:*

ERLENE JORDAN  
Goldsboro

Y.W.C.A.; I.R.C.; Glee Club; Women's Student Government, Treasurer; Physical Education Club; Religious and Social Workers Club.

SAMUEL W. LEHEW  
Rich Square

Men's Student Government.

NEAL PATRICK MACARTHUR  
Goldsboro

Dramatic Club; Veterans' Club.

*Second row:*

MARY McCLESE  
Columbia

Y.W.C.A.

ZEI MA MACL  
Sanford

Women's Student Government, President; Alpha Pi Epsilon; Dramatic Club; Physical Education Club; Y.W.C.A.; Commercial Club.

JAMES HORACE MANESS  
Fayetteville

Intramural Football.

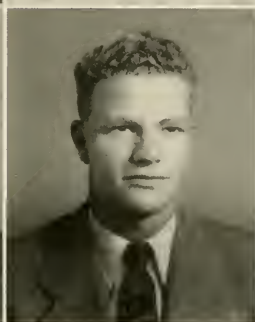
JORDAN  
McCLESE

LEHEW  
MAGE

MACARTHUR  
MANESS







MANN  
MARCOM

L. MANNING  
MILES

T. MANNING  
MITCHELL

*First row, left to right:*

SAMUEL C. MANN  
Lillington

Men's Student Government; Monogram Club, Vice-President; Veterans' Club; Basketball Team.

LESSIE D. MANNING  
Williamston

Y.W.C.A.; Physical Education Club; Commercial Club; Dramatic Club; Delta Psi Omega.

THELMA MANNING  
Williamston

Y.W.C.A.; Physical Education Club; Commercial Club, Secretary; Women's Student Council, Secretary; Dramatic Club.

*Second row:*

EARL MARCOM  
Kinston

Y.M.C.A.; Religious and Social Workers Club; Veterans' Club; Senior Class Officer, Secretary-Treasurer.

PERVIST M. MILES  
Woodland

Veterans' Club; Monogram Club, Basketball Team.

WILLIAM P. MITCHELL  
Trotville

Y.M.C.A.; Veterans' Club.

## SENIORS

## SENIORS

*First row, left to right:*

BEVERLY MOODY  
Raleigh

Peace College.

MARY MOODY  
Raleigh

Peace College.

CARROLL L. PAYNE  
Stumpy Point

B. MOODY  
PEELE



M. MOODY  
PORTER



*Second row:*

DURWOOD B. PEELE  
Goldsboro

I.R.C.; *Columns*; Veterans' Club;  
Y.M.C.A.; Dramatic Club.

FREDERIC JAMES PORTER  
Plymouth

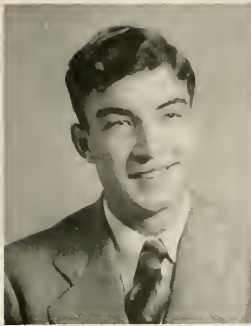
I.R.C.; Veterans' Club; Y.M.C.A.; In-  
tramural Softball.

RALPH L. RAY  
Fayetteville

I.R.C.; Veterans' Club; Y.M.C.A.

PAYNE  
RAY





J. RICE  
SANDERSON

L. RICE  
SAWYER

RIVERS  
SHAMBLEY

*First row, left to right:*

JULIUS C. RICE  
Lumberton

Commercial Club; Y.M.C.A.; Dramatic  
Club, *Columns*.

*Second row:*

ROBERT SANDERSON  
Magnolia

Veterans' Club; Y.M.C.A.

LATTIE W. RICE  
Lumberton

Commercial Club; I.R.C.; Y.M.C.A.

JOHN H. SAWYER  
Bryson City

I.R.C.

JAMES H. RIVERS  
Newport News, Virginia

MARVIN SHAMBLEY  
Durham

Basketball Team.

## SENIORS

# SENIORS

*First row, left to right:*

MARTHA SHEARON  
Wake Forest

Y.W.C.A., President; Glee Club; Religious and Social Workers Club; Phi Theta Kappa.

JOHN E. SMALL  
Fair Bluff

Baseball Team.

FENNER N. SPIVEY  
Louisburg

I.R.C.; Veterans' Club; Y.M.C.A.; Phi Theta Kappa, President.

*Second row:*

EDGAR A. STALLINGS  
Youngsville

Baseball Team; Intramural Basketball.

WILLIAM F. STEELE  
Oak Harbor, Washington

Veterans' Club; Baseball Team; Intramural Football; Monogram Club, Secretary-Treasurer; Men's Student Government.

WILLIAM PAUL STEPHENSON, JR.  
Benson

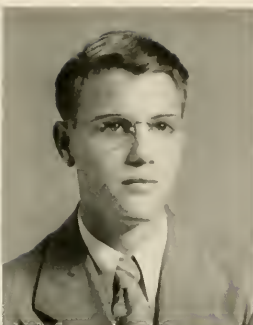
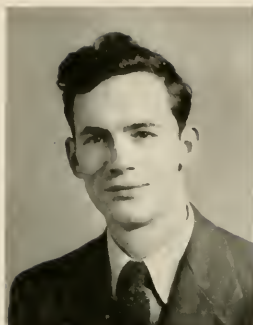
Baseball Team; Jump Band.

SHEARON  
STALLINGS

SMALL  
STEELE

SPIVEY  
STEPHENSON





J. STEWART  
C. STRICKLAND

M. STEWART  
J. STRICKLAND

STOUT  
THOMAS

*First row, left to right:*

JOHN D. STEWART  
Swansboro

Veterans' Club; Monogram Club; Y.M.  
C.A.; *Columns*.

*Second row:*

CARL D. STRICKLAND  
Fayetteville

I.R.C.; Y.M.C.A.; Religious and Social  
Workers Club.

MILTON GRAHAM STEWART  
Erwin

Phi Theta Kappa.

JAMES STRICKLAND  
Spring Hope

NEIL TAYLOR STOUT  
Star

Veterans' Club; *Columns*; Y.M.C.A.;  
I.R.C.

JOSEPH E. THOMAS  
Jonesboro

Basketball Team; Monogram Club.

## SENIORS

## SENIORS

*First row, left to right:*

HARRY TUCKER  
Fair Bluff

Beta Phi Gamma, President; Alpha Pi Epsilon; Monogram Club; Non Veterans' Club; Baseball Team; Basketball Team; Commercial Club; *Columns*.

JENNIE TYSON  
Lucama

Physical Education Club, Secretary; Y.W.C.A.; Glee Club; Women's Student Government.

JAMES E. UNDERWOOD  
Youngsville

*Columns*; Non Veterans' Club.

*Second row:*

DONALD WALKER  
Wallston, Mass.

CHARLES WATKINS  
Durham

Non Veterans' Club, Secretary; Dramatic Club.

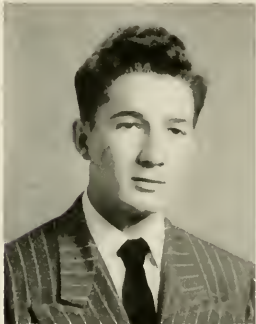
ROSCOE F. WHEELLESS  
Rocky Mount

Veterans' Club.

TUCKER  
WALKER

TYSON  
WATKINS

UNDERWOOD  
WHEELLESS





J. WHITE  
WILDER

W. WHITE  
L. WILLIAMS

WIGGINS  
W. WILLIAMS

*First row, left to right:*

JOHN B. WHITE  
Norlina

Veterans' Club.

*Second row:*

GLENN J. WILDER  
Woodland

Monogram Club; Baseball Team.

WILLIAM A. WHITE  
Hertford

LON R. WILLIAMS  
Elizabethtown

Veterans' Club, President Dramatic Club;  
OAK Staff.

GEORGE WIGGINS  
Louisburg

WILTON H. WILLIAMS  
Raleigh

Glee Club; Veterans' Club; OAK Staff,  
Sports Editor.

## SENIORS

## SENIORS

*First row, left to right:*

WALTER LARRY WINBORNE  
Scotland Neck

Commercial Club; Veterans' Club, Secretary; Monogram Club, Basketball, Football Team, Baseball; Dramatic Club; OAK Staff, Art Editor.

MARY ALICE WOODARD  
Margarettsville

Y.W.C.A.; Religious and Social Workers Club; Physical Education Club; Women's Student Government; I.R.C.; Senior Superlative.

BETTY WORRELL  
Newsoms, Virginia

Commercial Club; Physical Education Club; Y.W.C.A.; *Columns*; OAK Staff, Women's Sports Editor; Basketball Team, Softball Team.

*Second row:*

DAN WYNN  
Jonesboro, Georgia

Veterans' Club; Y.M.C.A.; *Columns*; Senior Superlative.

OLIVIA MARTIN  
East Bend

Glee Club, Vice-President; Y.W.C.A.; Physical Education Club; Sextette; Basketball Team; Softball Team; OAK Staff, Sports Editor; Cheerleader.

WINBORNE

WYNN

WOODARD

MARTIN

WORRELL





## *Senior Class Officers*



EARL MARCOM  
*Secretary-Treasurer*

DAN WYNN  
*President*

ANNE JONES  
*Vice-President*

## *Junior Class Officers*



SAM GUNTER  
*President*

VIVIAN PROCTOR  
*Secretary-Treasurer*

ERNEST HOWELL  
*Vice-President*

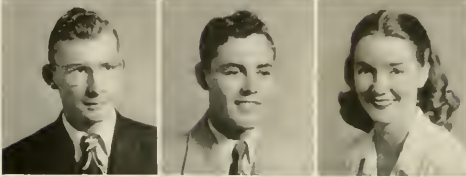
## JUNIORS



ROBERT BRUCE AUSBORN, Kittrell  
EDWARD ORICK BAGLEY, Raleigh  
THEDRO J. BARRETT, JR., Skippers, Va.



JESSE G. BENNETT, JR., Morehead City  
SUE ELLEN BENTON, Carolina Beach  
ELEANOR RUTH BEST, Turkey



CONRAD BLAKE, Stedman  
DOCK AMBROSE BRITT, Erwin  
VIRGINIA BRITTAIN, Dover



ROBERT S. BRODIE, Inez  
CLAIRE MAY BROOME, Charlotte  
ROBERT HOUSTON BROOME, Raleigh



BILL BROTHERS, Elizabeth City  
JANE BUCKNER, Far Rockaway, N. Y.  
DAISY RHODES BYRD, Turkey



DONALD CAMERON, Raeford  
JOSIAH T. CARTER, JR., Durham  
WILLIE MAE CARTER, Louisburg



RUTH C. COGGINS, Ahoskie  
MARY FRANCES COLEY, Stem  
ZELDA COOR, Goldsboro

## JUNIORS

ALBERT G. COWART, Miami, Fla.

ANN CRAWFORD, Greenville

JEAN CRAWFORD, Greenville



GLENNER CULPEPPER, Elizabeth City

ALLIE LEE DAMERON, Durham

LEON EARL DAVENPORT, Elizabeth City



FRANCES DAVIS, Selma

GEORGE DAVIS, Louisburg

JANIE DICKERSON, Ca-Vel



SURRY DUNN, Scotland Neck

MARIE EDMONDSON, Tarboro

MARY RUTH EDWARDS, Godwin



ELTON ELLIOTT, Elizabeth City

AUDREY EPPS, Southern Pines

JOE FEATHERSTON, Roxboro



RICHARD H. FERRELL, Moyock

ROBERT E. FERRELL, Moyock

JOHN H. GAMBER, Fort Bragg



ERNEST PRESTON GASTER, JR., Sanford

ROBERT FRANCIS GAYMAN, Dillsburg, Pa.

JOSEPH W. GOODWIN, JR., Edenton



## JUNIORS



LAWRENCE A. GREEN, Creswell  
HAROLD GREGORY, Shawboro  
WILLIAM D. GRIFFIN, Raleigh



SAM E. GUNTER, Raleigh  
VELMA HALL, Roxboro  
BETTY LOUISE HARGROVE, Durham



BOLIVER T. HARRIS, Spring Hope  
JOHN REYNOLDS HARRIS, Goldston  
BETTY JO HARTLEY, Durham



ECTOR PATTERSON HAYES, JR., Durham  
ROBERT CLARENCE HILL, Youngsville  
LENNON W. HOOPER, Stumpy Point



ROBERT JACKSON HUGHSON, Ahoskie  
PEGGY JEAN IVEY, Godwin  
D. NON BRASTON JACKSON, Raleigh



RANDOLPH LEON JOHNSON, Arlington, Va.  
ROBERT EUGENE JOHNSON, Oriental  
HOWARD COLE JONES, Beaufort



THOMAS SHELTON LANGDON, Benson  
BARBARA JANE LEWIS, Henderson  
CHARLES F. LEWIS, JR., Carolina Beach

## JUNIORS

MARTHA ANN LEWIS, Red Oak  
 W. J. LITTLE, JR., Concord  
 HENRY L. McINTOSH, JR., Fayetteville



BOWEN MCKINNEY, McKinney, Ky.  
 PEGGY JOYCE MANNING, Tarboro  
 RACHAEL MODLIN, Ahoskie



GEORGE MURPHY, Louisburg  
 MARY ELIZABETH PARAMORE,  
 Chocowinity  
 LILA W. PASCHAL, Sanford



THOMAS A. PATTERSON, Erwin  
 DUFFY LEE PAUL, Morehead City  
 IBRAHIM PENA, Encrucijada, Cuba



VIVIAN R. PERGERSON, Louisburg  
 MARVIN M. PERKINSON, Norfolk  
 J. W. PERRY, JR., Zebulon



REBECCA ANN PERRY, Louisburg  
 RICHARD M. POYNER, Moyock  
 VIVIAN PROCTOR, Rocky Mount



JOHN L. PURYEAR, South Boston, Va.  
 BYRAN W. RICHARDSON, Keady  
 PEGGY RIDAUGHT, Carolina Beach



## JUNIORS



CHARLES A. ROYAL, JR., Salemburg  
 MERLE SASSER, Hallsboro  
 SPENCER SCOTT, Wairenton



JAMES L. SCOTT, Dillwyn, Va.  
 BILLY B. SHOTWELL, Roxboro  
 GRADY K. SNYDER, Sanford



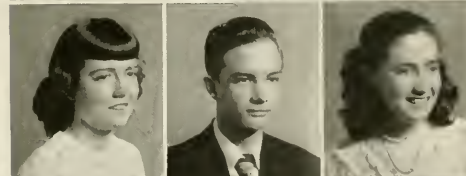
EDWIN STEWART, Broadway  
 COE STRAIN, Fairmont  
 BETTY STROTHER, Louisburg



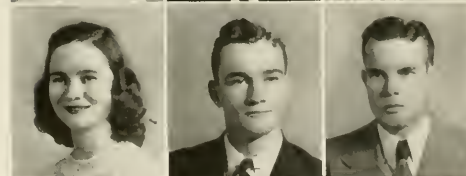
JAMES SUGG, New Beth  
 MERLE RAY SUMMERLIN, Mt. Olive  
 NICK THEODOSIUS, Franklin, Va.



LOUIS THORNTON, Fayetteville  
 JOHN TRUITT, Sanford  
 JOHN B. WADELL, Fair Bluff



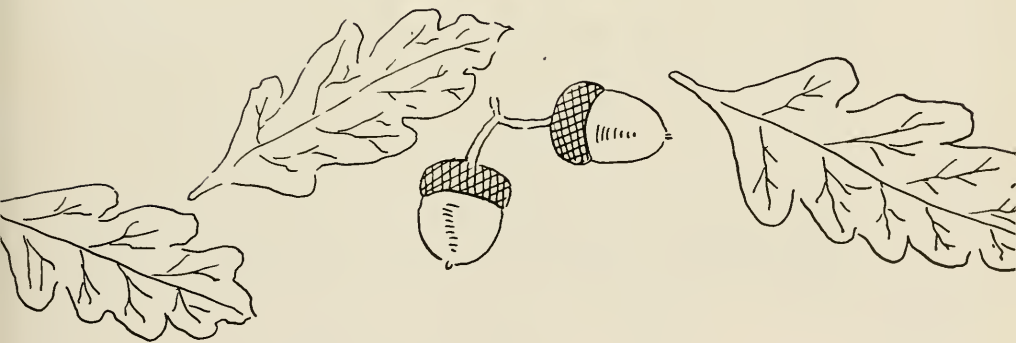
PATTIE JEAN WALLER, Kinston  
 CARL WILKINS, Lumberton  
 ELIZABETH CAROLINA WILLIS,  
 Morehead City



EVA RAE WILSON, Warrenton  
 THERIT WINSTEAD, Leasburg  
 WILLIAM W. YOUNG, Kittrell

*Not Pictured:* Jack Cathey Anderson, Thomas B. Barbour, Samuel J. Cole, Thomas Sidney Hale, Lynwood Hall, David T. Hollinsworth, Ernest Lee Howell, John Henry Oldham, John R. Rowland, Adolphus B. Ussery, Jr.

# Clubs and Organizations



*Women's Student Council*



*Men's Student Council*



## *Women's Student Council*

ZELMA MACE . . . . .	<i>President</i>
MARY WOODARD . . . . .	<i>Vice-President</i>
THELMA MANNING . . . . .	<i>Secretary</i>
ERLENE JORDAN . . . . .	<i>Treasurer</i>
JENNIE TYSON . . . . .	<i>Senior Representative</i>

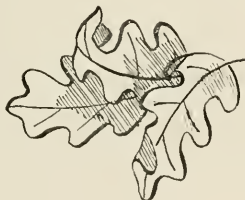
## *Men's Student Council*

DICK CANNADY . . . . .	<i>President</i>
MAG FULLER . . . . .	<i>Vice-President</i>
WILBUR JONES . . . . .	<i>Secretary-Treasurer</i>

*Representatives:* JIM FLEENOR, SAM LEHEW, SAM MANN, ERNEST CARTER, SAM GUNTER, THOMAS PATTERSON, MARVIN SHAMBLEY, EVERETT BRYANT, WILLIAM STEELE.

## *Men and Women Student Councils*

The Men and Women Student Councils are the student's government. The purpose of these associations is to help in creating a friendly atmosphere which will make it easy to do the right thing and make it difficult to do wrong, and to work for the general happiness of the students of *Louisburg College*.



# *Delta Psi Omega*



DAPHNE BRYAN ..... *President*  
ROSEMARY DAWSON ..... *Secretary-Treasurer*  
MRS. TARPEY ..... *Sponsor*

The newest honorary fraternity on the campus is the Delta Psi Omega, the Junior College division of the Alpha Psi Omega—a national dramatic fraternity. This organization is formed of students who have demonstrated their ability in dramatic art. To be eligible for membership, a student must have played a major role in one play or supporting roles in two plays; efficient work as stage hand or make-up artist is also acceptable.

*Scenes from "As You Like It"*



# YWCA - YMCA



MARTHA SHEARON . . . . . *President YWCA*  
ELMER BEST . . . . . *President YMCA*

The YWCA-YMCA seeks to serve the students on the campus through means of worship and recreation. Its threefold purpose is to administer to the needs of the body, mind, and soul, and by so doing, to create a Christian atmosphere on the campus and to train the students for future service to their Communities.

## *Glee Club*



JANIE DICKERSON ..... *President*  
PEGGY IVEY ..... *Librarian*  
OLIVIA MARTIN ..... *Secretary-Treasurer*  
MISS SARAH FOSTER ..... *Director*

The Glee Club is composed of students possessing vocal talent. Membership, acquired through tryouts, is open to any student indicating a sincere interest in the study of vocal music.

## Commercial Club



REUBEN BERRY . . . . . *President*  
JULIA GATTIS . . . . . *Secretary*  
PATTIE WALLER . . . . . *Treasurer*  
THELMA MANNING . . . . . *Program Chairman*  
MISS AVERITTE . . . . . *Sponsor*

The Commercial Club is a social and educational group organized for the benefit of commercial students. Membership is open to any student enrolled in the Commercial Department.

## Alpha Pi Epsilon

ORLANDO FRANSE.....	President
ROSEMARY DAWSON.....	Secretary
ZELMA MACE.....	Treasurer
RUTH CHANDLER.....	Chairman of Social Committee
MRS. PERRY.....	Sponsor

The Alpha Pi Epsilon is the national honorary secretarial fraternity. To become a member, a student must be enrolled in the Commercial Department, make an average grade of B, and be elected unanimously by the members.

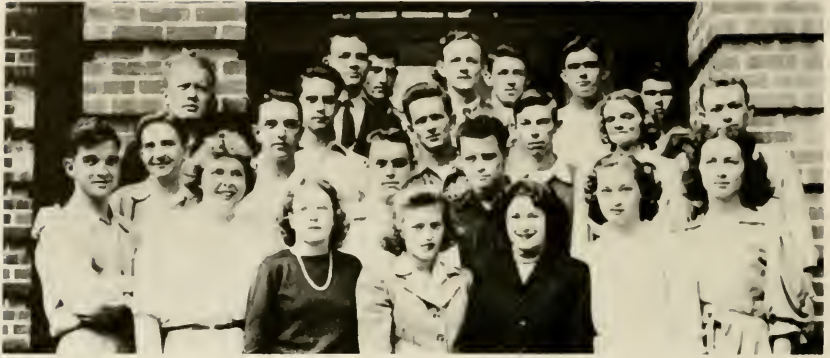


## Beta Phi Gamma

HARRY TUCKER.....	President
H. MAC FULLER.....	Vice-President
ANNE JONES.....	Secretary-Treasurer
MISS RUTH MERRITT.....	Sponsor

Beta Phi Gamma, the junior college branch of Alpha Phi Gamma, is the honorary journalistic fraternity. Members of the staffs of the college publications are eligible for membership, provided they are in the upper two-thirds of their class and show an active interest in journalism.

# Columns



*Columns* began in the fall of 1941 as a publication under the supervision of the journalism class of Louisburg College. It has provided a source of campus enjoyment, furnished a medium of student expressions, offered opportunities in practicing journalistic writing, led the thoughts of campus leaders, and has and will continue to preserve a record of campus life.

SAM GUTHRIE  
*Editor*

ROBERT GAYMAN  
*Associate Editor*

T. H. HARRIS  
*Managing Editor*

DUFFY PAUL  
*Assistant Editor*

NEIL STOUT  
*News Editor*

JAMES FLEENOR  
*Feature Editor*

D. B. PEELE, ZELDA COOR, EDWARD BAGLEY  
*News Reporters*

J. W. PERRY, W. F. STEELE  
*Men's Sports*

MARY RUTH EDWARDS  
*Women's Sports*

VIVIAN PROCTER  
*Exchange Editor*

DAN WYNN  
*Business Manager*

THOMAS PATTERSON  
*Associate Business Manager*

WILLIAM CLARKE  
*Photographer*

REUBEN BERRY  
*Assistant Photographer*

PEGGY MANNING  
*Proofreader*

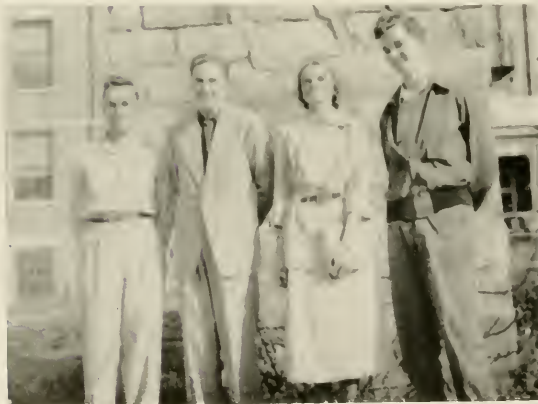
E. B. GENTRY  
*Copy reader*

CLAIRE MAY BROOME  
*Make-up Manager*

DAPHNE BRYAN, ROBERT JOHNSTON  
JOHN STEWART  
*Circulation Managers*

MILDRED PARKS BRYANT  
*Make-up Manager*

MISS RUTH MERRITT  
*Faculty Adviser*





# Veterans' Club



- LON WILLIAMS.....*President*  
PAUL BYRUM.....*Vice-President*  
DUSTY COLLINS.....*Secretary*  
ALLIE LEE DAMERON.....*Treasurer*  
LARRY WINBORNE.....*Corresponding Secretary*

The William M. McFadden Memorial Club is composed of student veterans of World War II. The purpose of the club is to promote understanding and co-operation between the ex-servicemen and the school.

# *Non-Veterans' Club*



CAMPUS SCENE

- H. MAC FULLER . . . . . *President*  
PAUL JOHNSON . . . . . *Vice-President*  
CHARLES WATKINS . . . . . *Secretary*  
SPENCER SCOTT . . . . . *Treasurer*

The Non-Veterans' Club has a three-fold purpose: to promote more and better entertainment for the student body; to promote better relations between students and faculty; to promote better school spirit.

## International Relations Club

WALTON BASS . . . . . *President*  
 JOHN SAWYER . . . . . *Vice-President*  
 ANNE JONES . . . . . *Secretary-Treasurer*  
 MR. RICHARD GRIFFIN . . . . . *Sponsor*

The International Relations Club is organized and directed by the students of the college for the purpose of studying national and international problems of local, regional, and world interest. It also tries to create an interest in these problems and to show the students their responsibility in trying to help correct these problems.



## Phi Theta Kappa

FENNER SPIVEY . . . . . *President*  
 BURWELL EVANS . . . . . *Vice-President*  
 INA EVANS . . . . . *Secretary-Treasurer*  
 ANNE JONES . . . . . *Reporter*  
 MISS ELIZABETH JOHNSON . . . . . *Sponsor*

Phi Theta Kappa is an honor fraternity of character, leadership, and scholarship. Students enrolled in the Liberal Arts Department who make an average of B or above are eligible for membership in this fraternity.

# Religious Workers Club



## CAMPUS SCENE

- BILL BYRD . . . . . *President*  
 MARGARET BRADLEY . . . . . *Secretary-Treasurer*  
 STEWARD BRODIE . . . . . *Vice-President*  
 D. A. BRITT . . . . . *Co-Chairman of Social Committee*  
 DAN BOWERS . . . . . *Sponsor*

The Religious Workers Club is a newly organized club of the students who are enrolled in Religious Education. The purpose of the club is to share ideals and fellowship and to serve the world in any way possible.

# The Oak



## STAFF

WILBUR JONES  
*Editor*

ANNE JONES  
*Associate Editor*

MAC FULLER  
*Feature Editor*

C. F. LEWIS, JR.  
*Junior Editor*

LARRY W NBORNE  
*Art Editor*

BETTY HARGROVE, FRANCIS DAVIS  
*Assistant Art Editors*

WILTON WILLIAMS  
*Men's Sports Editor*

BETTY WORRELL  
*Women's Sports Editor*

BILL CLARKE  
*Photographer*

REUBEN BERRY  
*Photographer*

ARTHUR DAVIS  
*Business Manager*

ROBERT BROOME  
*Assistant Business Manager*

L. W. HOOPER  
*Advertisement Manager*

DAPHNE BRYAN, LOUIS BRYAN  
JANIE DICKERSON, BETTY JO HARTLEY  
OLIVIA MARTIN, LON WILLIAMS  
*Advertising Staff*

JULIA GATTIS, ZELDA COOR  
PEGGY MANNING  
*Typist*



Arthur Davis, *Business Manager*; Mr. Griffin, *Adviser*; Wilbur Jones, *Editor*.



## *Senior Superlatives*



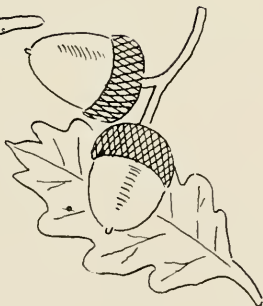
ANNABELLE BLOUNT  
DAN WYNN  
*Most Conscientious*

P. G. HAVANER  
MARY WOODARD  
*Most Athletic*

ZELMA MACE  
ROSCOE WHEELER  
*Most Versatile*



# Athletics



## *Girls Physical Education Club*



MARY RUTH EDWARDS .....	<i>President</i>
FRANCES DAVIS .....	<i>Vice-President</i>
JENNY TYSON .....	<i>Secretary</i>
LILA PASCIAL .....	<i>Treasurer</i>
OLIVIA MARTIN .....	<i>Sports Head</i>
MISS ELOISE HILL .....	<i>Adviser</i>

Open not only to girls majoring in Physical Education, but to any girl sincerely interested in athletics, this club strives to promote interest and study in the field of sports.





*Sports On the Campus*

# Action Shots





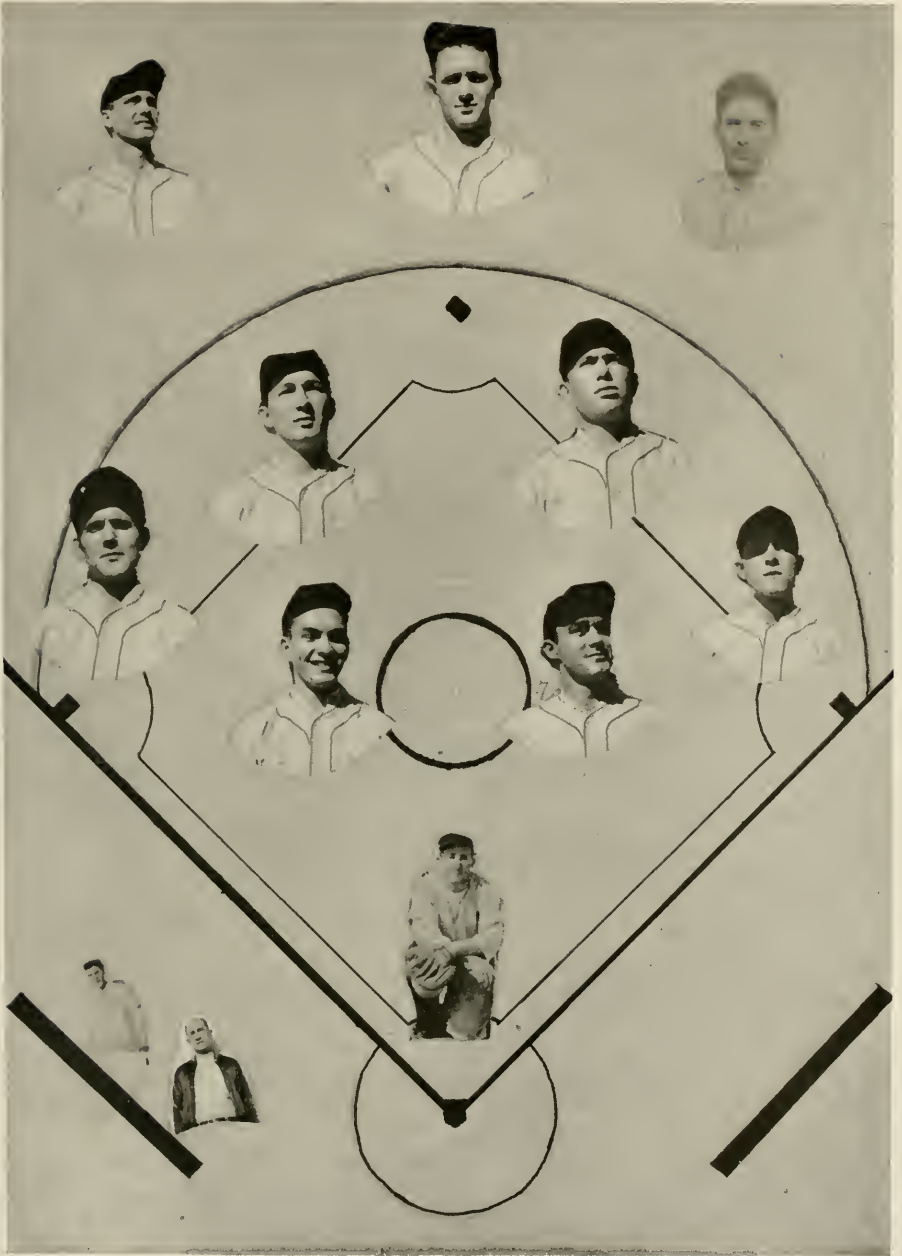
*Cheerleaders*

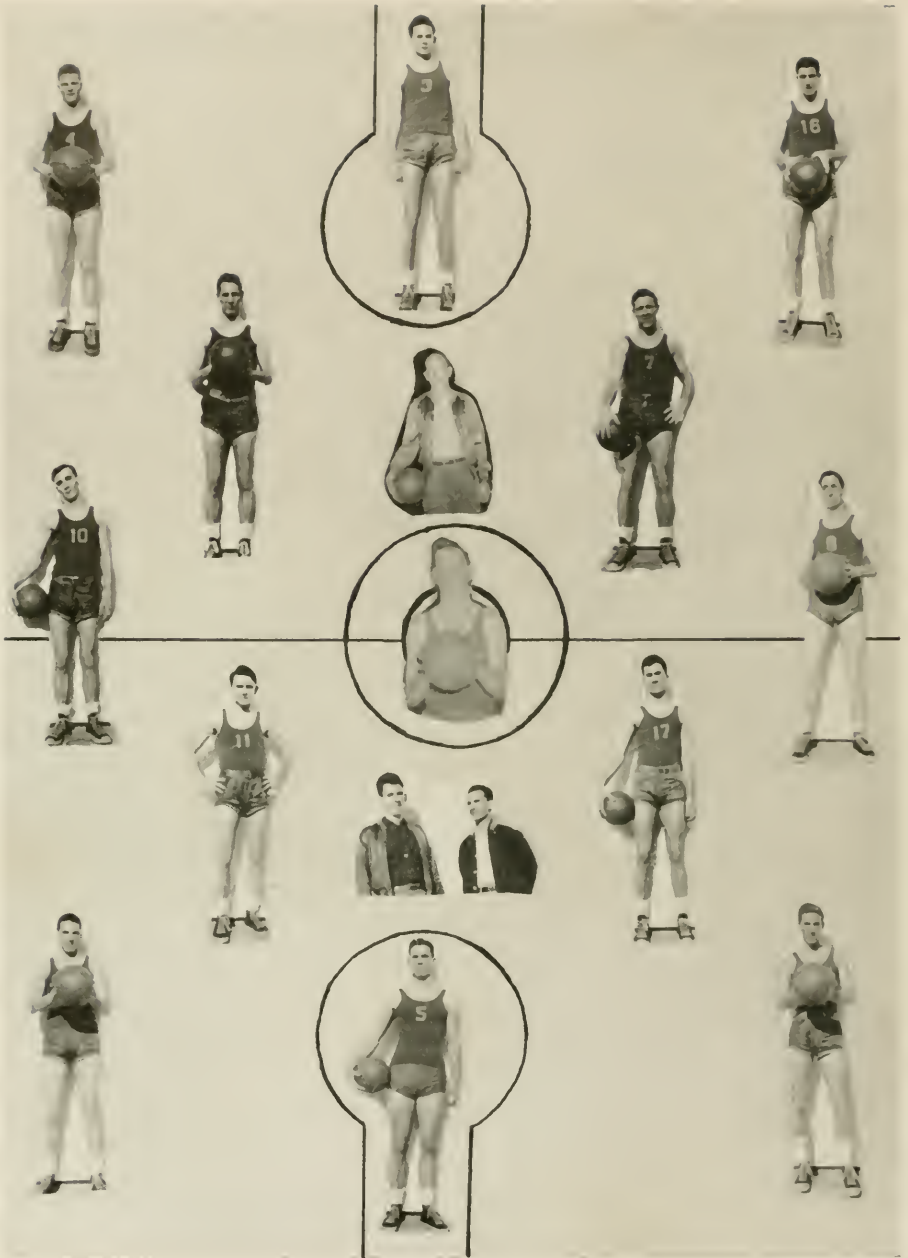


## *Monogram Club*

EVERETT BRYANT .....	<i>President</i>
SAM MANN .....	<i>Vice-President</i>
L. F. STEELE .....	<i>Secretary-Treasurer</i>
SCOTT BOYD .....	<i>Sponsor</i>

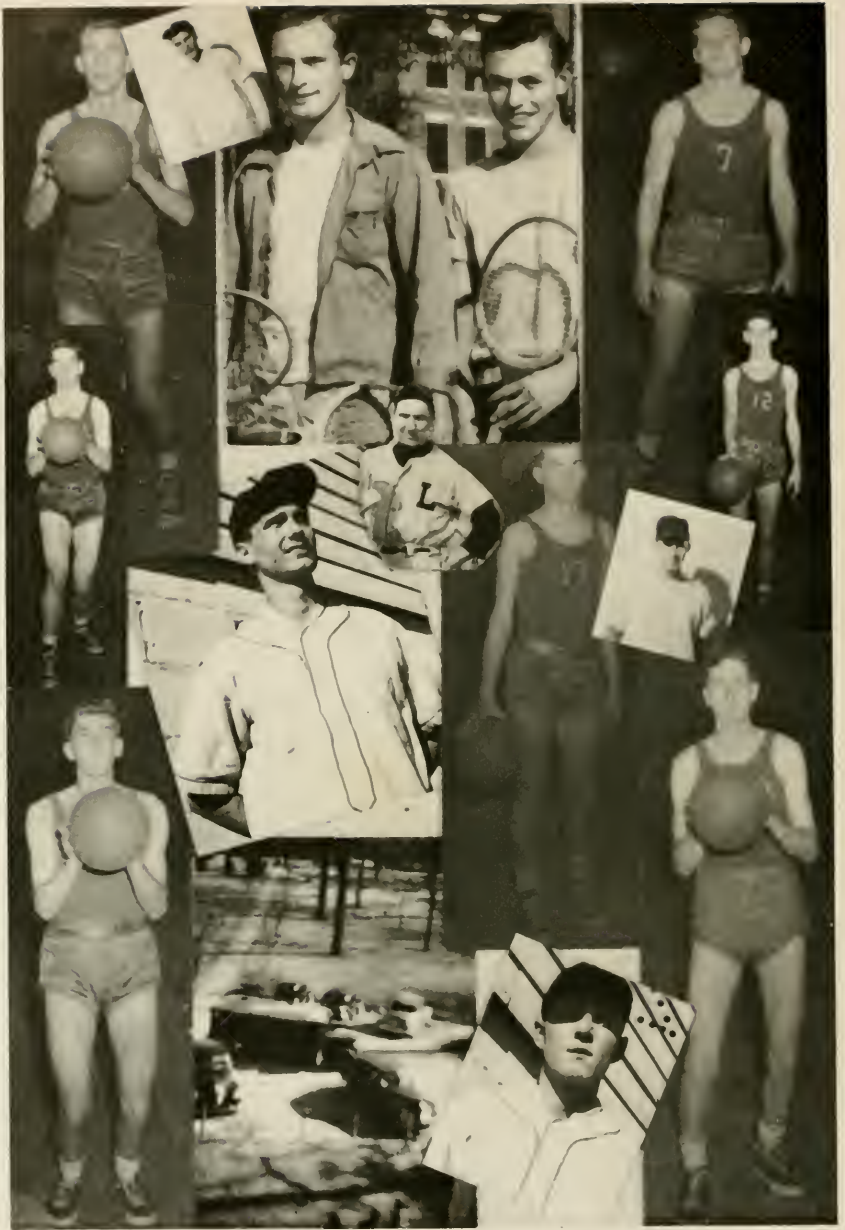
The Monogram Club is composed of men who have won a letter through participation in intercollegiate athletics. The aim of this group is to promote athletics and good sportsmanship.





# *Intramural Sports*







# Features



## *Campus Leaders*



Harry Tucker, Lon Williams, Wilbur Jones, Zelma Mace, Dick Cannady, Mac Fuller, Janie Dickerson, Mary Ruth Edwards, Sam Guthrie, Daphne Bryan, Dan Wynn, Martha Shearon, Orlando Fransi, Fenner Spivey, Bill Byrd, Everette Bryant, Reuben Berry, Elmer Best, Parl Stephenson, and Walton Bass.



1. Daydreaming. 2. Hard at work. 3. Interesting Subject. 4. Hard at work.  
5. Looking pretty. 6. What kind of bottle?



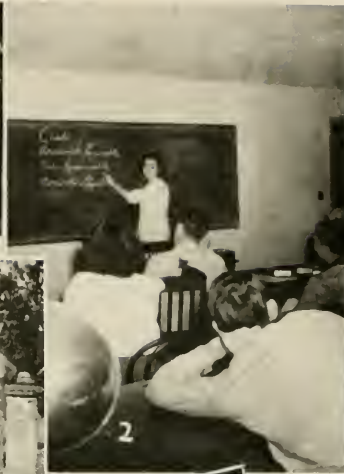
1. Sack Time. 2. Resting up. 3. Early Bird. 4. Once in a while. 5. Gossip. 6. Aw Shucks!  
 7. Cramming. 8. Visiting! 9. Sitting pretty. 10. Help from the teacher.



1. Before Louisburg. 2. After Louisburg. 3. Waiting for the verdict. 4. Sweet, Isn't he?  
5. Sleeping beauty. 6. The Duel. 7. A ride, Please? 8. Exercise. 9. Hold still. 10. Ain't  
life grand?



1. Parade in town. 2. Just for kicks. 3. Under guard. 4. Happy and sad. 5. Test today. 6. Making time. 7. Triple threat. 8. Two Rebs and a Yank. 9. No Spanish today. 10. All's well.



1. Girls only. 2. Listening. 3. Five points. 4. Hard day ahead. 5. Studying for finals. 6. The Thinker. 7. The sun is bright. 8. Animal? Vegetable? Mineral? 9. Eating time. 10. Off to class.



1. Isn't he sweet? 2. Big sister, Little sister. 3. In the city. 4. My Bow is best. 5. Smiling pretty. 6. Hold her tight. 7. Just Gabbing. 8. Got my cookies. 9. No, not what you think. 10. Just sack time.



1. Home life. 2. Help from the wife. 3. After the game. 4. Campfire rally. 5. Let's play Tennis. 6. Talking to the girls. 7. A campus beauty. 8. College float. 9. Whats this. 10. Just arriving.





1. Staff of THE OAK at work. 2. A rose among thorns. 3. It must be grand. 4. Thinking. 5. Gee whiz. 6. Home. 7. Genius at work. 8. Balcony boys. 9. Coffee hour. 10. Let's socialize.

# *Advertisements*



# LOUISBURG COLLEGE

*Under Control*

NORTH CAROLINA METHODIST CONFERENCE

*Accredited by*

THE STATE DEPARTMENT OF EDUCATION  
NORTH CAROLINA COLLEGE CONFERENCE  
UNIVERSITY OF NORTH CAROLINA



OFFERING TWO YEARS TERMINAL COURSES

— in —

COMMERCIAL SCIENCE, MEDICAL SECRETARY,  
RELIGIOUS AND SOCIAL SECRETARIES

— and —

Two-Year Preparatory Courses Leading to Degrees in Senior Colleges in  
Engineering, Agriculture, Dentistry, Commerce,  
Home Economics and Liberal Arts

A LABOR SCHOLARSHIP

Will be granted to those who need to earn part  
of their college expense.



*For Details Write*

LOUISBURG COLLEGE : Louisburg, N. C.

# CITY MOTOR COMPANY

---

## DEPENDABLE USED CARS

---

RALEIGH, NORTH CAROLINA

*On your way to Raleigh Stop  
in at the*

### **DRIVE IN GRILL**

Louisburg Road  
RALEIGH, N. C.

BURGERS - SHAKES - SUNDAES

### **FIRST-CITIZENS BANK**

---

LOUISBURG, N. C.

*At All Good Grocers*

**SUPER SOFT**  
**B E L L**  
**WHITE BREAD**

*It's Super Soft and Enriched*

BEST WISHES

---

*YOUR DOWNTOWN MEETING PLACE*

**BODDIE  
DRUG STORE**

LOUISBURG, NORTH CAROLINA

**WHITE'S  
ICE CREAM**

---

THERE **IS** A DIFFERENCE

---

When —

## “Knowledge is Proven”



More than fourteen years have passed since a small but determined group of farmers and agriculturists started out to prove that by coöperation the North Carolina farmer could make farming more profitable.

Since those early days nearly 80,000 farmers have joined in building for themselves an organization of service that saves for them thousands of dollars each year. The “Knowledge” at the beginning is “proven.”

## Farmers Cooperative Exchange

CENTRAL OFFICE — RALEIGH, N. C.

### WEBB'S Henderson Shoe Store

*Shoes for the Entire Family*

HENDERSON, N. C.

### WESTERN AUTO ASSOCIATE STORE

*Everything for the Auto*



LOUISBURG, NORTH CAROLINA

### HOME FURNITURE CO.

*Complete  
Furnishings for the Home*



PHONE 459-1

FURNITURE  
APPLIANCES



LOUISBURG, NORTH CAROLINA

**PRUITT LUMBER CO.**

WE OFFER YOU A COMPLETE  
BUILDING SERVICE

Phone 433-1 East Nash Street  
LOUISBURG, NORTH CAROLINA

BEST WISHES  
*to the*  
GUYS AND GALS

*at*  
LOUISBURG COLLEGE

**LOUISBURG THEATRE**

**LIBERTY  
WAREHOUSE**

HENDERSON, N. C.

---

*Newest and Best Lighted  
Warehouse in Town*

GOOD SALE  
EVERY DAY

---

G. T. ROBERTSON SONS  
L. L. "RED" STURDIVANT

The Home of Better Values

**LEGGETT'S  
DEPARTMENT STORE**

LOUISBURG, NORTH CAROLINA

---

PHONE 3531

---

*"The South's Leading Distributors of  
Reliable Merchandise"*

# LOUISBURG, N. C.

— is —

RICH IN HISTORY, HEALTH, AND  
HOSPITALITY

There is not a more ideal place of residence in the world for a student than Louisburg. There exists here at all times an atmosphere of quiet, culture, and refinement, that encourages study and accomplishment. The material needs of every student can be purchased in Louisburg at most reasonable prices; therefore, it is an economic and otherwise desirable home for students.

*Louisburg Sincerely Welcomes Everyone  
At All Times*

## TOWN OF LOUISBURG

W. C. WEBB, *Mayor*

### STEEL

*Warehoused or Fabricated  
From Stock*

STRUCTURAL  
ORNAMENTAL  
REINFORCING  
PLATE WORK  
BLACKSMITHING  
WELDING  
METAL BUILDING  
SUPPLIES  
CUTTING AND WELDING  
SUPPLIES  
METAL SASH, DOORS  
AND DOOR BUCKS

### PEDEN STEEL CO.

512 W. Hargett      Dial 3323  
RALEIGH, N. C.

### HENDERSON GROCERY COMPANY

---

WHOLESALE  
GROCERS

---

Henderson, N. C.



## SCHOOL SUPPLIES

Loose Leaf Books : Zipper Cases  
Fountain Pens : Dictionaries  
Recordings and  
Sheet Music



**JAMES E. THIEM**  
*Everything for the Office*

Dial 2-2913  
RALEIGH, N. C.

**G. W. MURPHY & SON**  
LOUISBURG, N. C.

Dealers in  
GROCERIES : MEATS  
FEEDS : SEEDS

*"Everything Good To Eat"*

Your Patronage is Appreciated

## FULLERS ESSO SERVICE

ESSO PRODUCTS : ATLAS  
TIRES : BATTERIES  
ACCESSORIES

(Opposite Post Office)  
DIAL 357-1      LOUISBURG, N. C.

# O'NEAL DRUG CO.

*"Your Drug Store"*

THE BEST OF EVERYTHING FOR YOU

SERVICE WITH A SMILE

Hollingsworth Candies

Prescriptions

LOUISBURG, NORTH CAROLINA

## EVERYTHING for the School and College

Files : Desks : Chairs : Tables : Pens : Pencils : Inks  
Mucilage : Gem Clips : Staples : Stapling Machines  
Typewriter Ribbons : Carbon Paper : Duplicating  
Machines : Both Gelatin and Fluid Type : Indexes  
Transfer Cases : Card Filing Boxes  
Stenographer's Notebooks, Etc.

## CAPITAL PRINTING COMPANY

PRINTERS

*for College and School Papers  
Catalogs and Yearbooks*

DIAL 3316

110 WEST HARGETT ST.

RALEIGH, NORTH CAROLINA

### **Does Your Homework Give You a Headache?**

Do you get sleepy when you study at home? Do your eyes burn and does your interest wander? Sometimes does your homework give you a headache? Well, perhaps all that is wrong is the light you work by. Poor lighting can give you a headache with resulting nervousness. It can actually harm your eyes permanently.

Perhaps what you need is one of the new CERTIFIED study lamps displayed in the electric stores. They are designed by experts to give you the kind of light you need for home study. After all, there is no use doing homework the HARD way.

**Carolina Power & Light Co.**

### **WALLER and SMITH Photographers**

---

Official Photographers

*For*

**THE 1949 OAK**

---

12 East Hargett Street

Phone 7708

RALEIGH

*Jean's  
of Raleigh*

*First in Fashions in the Carolinas*

*Compliments of*

**J. M. THOMPSON & CO.**

RALEIGH, N. C.

*Best Wishes*

*from the*

**AIR PORT GRILL**

The Shopping Center  
of Eastern Carolina

—  
*Ellis Stone*

MAIN STREET

DURHAM, NORTH CAROLINA

# CHESSON CANDY COMPANY

*"Sweets that Repeat"*

LOUISBURG, N. C.

PHONE 337-2

BEST IN CANDY, GUM, PEANUTS AND SANDWICHES

## *The Graphic Press, Inc.*

*Distinctive Printing is Economy*

324 SOUTH BLOUNT STREET  
RALEIGH, NORTH CAROLINA



THE ability to teach is a special gift. IF you enjoy working with children—make your decision now to join this honored profession. For "Our Teachers Mold Our Nation's Future," and America's future has need of you.

Printed as a public service by

EDWARDS & BROUGHTON  
COMPANY

RALEIGH, N. C.

In Coöperation with the Advertising Council on Behalf of the  
National Effort to Improve Our Schools







