

Historic, archived document

Do not assume content reflects current scientific knowledge, policies, or practices.

62.61

THE GRANDEST OF ALL
DAISIES
LIBRARY
RECEIVED
PERFECTLY HARDY,
FLOWER MEASURE
FOUR INCHES
IN DIAMETER
PRICE EACH 50¢
DOZEN \$5.00
SEE PAGE 27.



Vick's
Catalogue,
BULBS,
PLANTS,
AND SEEDS.

AUTUMN
1902.

TABLE OF CONTENTS.

| | | | |
|---------------------------------|----------------------------|----------------------------|------------------------------------|
| Abutilon 19 | Cyclamen Persicum 20 | Heliopsis Pitcheniana 27 | Pinks 28 |
| Achania 19 | Cyperus 20 | Heuchera sanguinea 27 | Platycodon grandiflorum 28 |
| Achillea 26 | Daffodils 10, 11 | Honeysuckle 31 | Pots, Flower, Paper, 3d page cover |
| Akebia quinata 31 | Daisy, Shasta 27 | House Plants 19-23 | Poppy 28 |
| Allium Neapolitanum 12 | Day Lily 18 | Hyacinths 4, 5, 6 | Potentilla 29 |
| Amaryllis 19 | Delphinium 27 | Hyacinth Tree 30 | Premiums 3d page cover |
| Amomum 19 | Deutzia 30 | Hydrangea 30 | Primrose, Baby 19 |
| Ampelopsis 31 | Dicentra 27 | Hypericum Moserianum 27 | Primrose, Chinese 23 |
| Anemone 12, 26 | Dictamnus Fraxinella 27 | Iberis sempervirens 28 | Primrose, Giant Hardy 28 |
| Anthericum 19 | Digitalis 27 | Indian Strawberry 27 | Primula obconica grandif. 23 |
| Aquilegia 26 | Dutchman's Pipe 31 | Iris 14 | Purple Fringe 30 |
| Arabis alpina 26 | Eleagnus longipes 30 | Ixia 12 | |
| Araucaria 19 | Erianthus Ravennæ 27 | Japan Globe Flower 30 | Ranunculus 16 |
| Aristolochia Sippo 31 | Eulalia 27 | Jasmine 22 | Raspberries 34 |
| Asparagus 19, 20 | Euphorbia corollata 27 | Jonquils 11 | Roman Hyacinth 5 |
| Azalea 19, 30 | Exochorda grandiflora 30 | Kerria Japonica 30 | Roses 24, 25 |
| | Feathered Hyacinth 5 | Lace Fern 20 | Rubber Plant 22 |
| Baltonia asteroides 26 | Fern Ball 21 | Larkspur 27 | Rudbeckia 29 |
| Baptisia australis 26 | Ferns 21 | Lawn Grass 39 | Scilla 16 |
| Begonia 20 | Ficus elastica 22 | Leucojum 15 | Seeds, Flower 39, 40 |
| Bignonia 31 | Flower Pots 3d page cover | Lilac 30 | Seeds, Vegetable 36-39 |
| Blackberries 33 | Flower Seeds 39, 40 | Lilies 17, 18 | Selaginella Emiliana 21 |
| Blackberry Lily 28 | Flowering Maple 19 | Lily, 17, 18 | Shasta Daisy 27 |
| Bleeding Heart 27 | Forsythia 30 | Lily, Blackberry 28 | Silk Oak 22 |
| Blue Spirea 26 | Fox Glove, 27 | Lily, Chinese Sacred, 12 | Small Fruits 32-35 |
| Boston Fern 21 | Fragaria Indica 27 | Lily of the Valley 15 | Smoke Tree 30 |
| Boston Ivy 31 | Freesia 15 | Lychnis 28 | Snowball 30 |
| | Fritillaria 12 | Lysimachia clethroides 28 | Snowdrop 16 |
| Calla 12, 20 | Fuchsia 21 | Lythrum roseum superbum 28 | Sparaxis 16 |
| Calycanthus floridus 30 | Funkia 18 | Matrimony Vine 31 | Spiraea 26, 29, 30 |
| Campanula persicifolia 26 | Gaillardia grandiflora 27 | Monarda didyma 28 | Strawberries 32 |
| Candytuft, Perennial 28 | Gas Plant 27 | Moss Fern 21 | Sunflower 27 |
| Cardamom 19 | Genista 22 | Moss Pink 28 | Sweet Pepper Bush 30 |
| Carex Japonica variegata 20 | Geranium 22 | Narcissus 10, 11 | Syringa 30 |
| Carnation 20 | Geum atrosanguineum 27 | Norfolk Island Pine 19 | |
| Carolina Allspice 30 | Golden Bells 30 | Ornithogalum 16 | Triteleia 16 |
| Caryopteris mastacanthus 26 | Golden Glow 29 | Orange, Otaheite 22 | Trumpet Vine 31 |
| Chinese Bell Flower 28 | Gold Flower 27 | Oxalis 13, 23 | Tulips 7, 8, 9 |
| Chinese Matrimony Vine 31 | Gooseberries 34 | Palms 23 | Umbrella Plant 20 |
| Chinese Sacred Lily 12 | Grapes 33 | Papaver, 28 | Vegetable Seeds 36-39 |
| Chionodoxa 12 | Grape Hyacinths 5 | Pardanthus Sinensis 28 | Viburnum 30 |
| Chrysanthemum 26 | Grevillea robusta 22 | Pea, Perennial 28 | Violet 29 |
| Clematis 26, 31 | Gypsophila pauciflora, 27 | Pearl Bush 30 | Virginia Creeper 31 |
| Clethra alifolia 30 | Hardy Flowering Shrubs, 30 | Pentstemon 29 | Wistaria 31 |
| Chimbers 31 | Hardy Plants 26-29 | Peonies 29 | Winter-fl'ring Plants 19-23 |
| Colchicum 12 | Helianthus 27 | Phlox, Perennial 28 | Xanthoceras sorbifolia 30 |
| Collections of Bulbs 6, 8, 40 | Hemerocallis 18 | Phlox subulata 28 | Yucca 29 |
| Collections Small Fruits 33, 35 | Hibiscus 28 | | |
| Coleopsis lanceolata 26 | Hollyhock 28 | | |
| Crocus 13 | | | |
| Crown Imperial 12 | | | |
| Currants 35 | | | |

Pruning and Budding Knives



- No. 178, Cocoa handle Pruning knife, steel capped, Hook blade, 2 3/4 inches \$1 00
 " 188, Cocoa handle Pruning knife, round end, Hook blade, 3 inches 70.



- " 713, Propagating Knife 60
 " 718, Bench Budding Knife, open blade 20
 " 913, Ivory handle Budding Knife, two blades 1 00

Insecticides

Sulpho-Tobacco Soap, per can 30 cents, by mail, prepaid.
 Whale-oil Soap, 1-lb. box 35 cents, by mail, prepaid.

Fertilizers

Walker's Excelsior Brand. An odorless, soluble food for house plants. A marvel of purity and efficacy. All lovers of flowers are delighted with it. Small size 25 cents; large size 50 cents, by mail, prepaid.

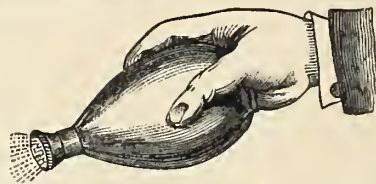
WISS' PRUNING SHEARS.

The new Wiss we consider one of the best in use. Two springs with each pair of shears. Price prepaid. \$2.00

Be sure to read the list of Premiums and Presents on 3d cover page

Tyrian Elastic Plant Sprinkler

Made with a flat button, and perforated detachable top. Is invaluable for Window Gardening, Bouquet Sprinkling, Dampening Clothes, etc.

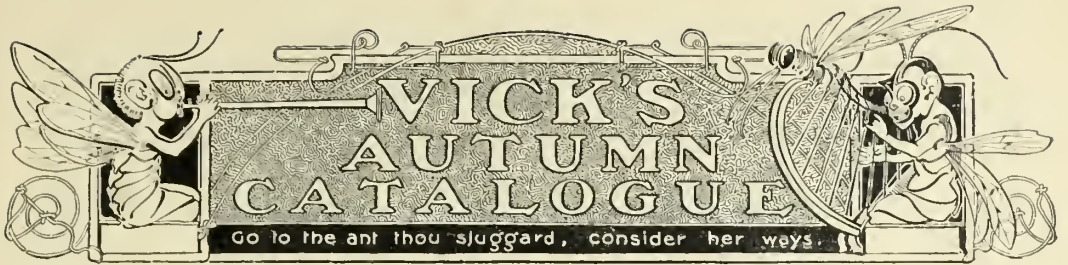


- No. 1, Large size, straight neck, by mail, prepaid . \$1 00
 " 2, Small size, " " " " . 75
 " 4, Large size, bent neck, " " " " . 1 10
 " 6, Small size, " " " " . 85

Vick's Velvet Lawn Fertilizer. ODORLESS.

This is bone reduced to the finest powder or flour with the addition of other chemical substances, forming a combination as a fertilizer of the highest value. It can be recommended for florist's use, or for all who raise pot plants, to mix with the soil, insuring a strong and healthy growth.

DIRECTIONS FOR USE AND QUANTITY REQUIRED.—It should be sown broadcast in the spring, summer, or fall, and a remarkable improvement will soon be observed. The fertilizer works best if applied just before a rain. If applied, however, when the weather is hot and dry, the application should be made early in the morning or late in the evening, and the lawn wet down freely immediately afterwards. Use at the rate of about ten pounds for every 300 square feet. In bags, 25 pounds, \$1.00; 50 pounds, \$1.75; 100 pounds, \$3.00. Express or freight charges are not prepaid.



IN THE FOLLOWING PAGES are brief descriptions of very many beautiful and desirable plants. These descriptions contain no overpraise; on the contrary, there are very few of them which might not be the subjects of extended essays, setting forth their qualities, beauties, and uses. What little, therefore, is said of them herein should be read reflectively, and their merits as stated carefully considered.

Dutch Bulbs. We cannot too strongly urge our customers, for their own sake, to make great use of the Dutch bulbs in their gardens and windows. No class of plants will give greater satisfaction. They can make our living-rooms bright from mid-winter until spring, and our gardens to glow with beautiful colors through the dull weeks of slowly awakening vegetation of northern latitudes. At the South, also, these bulbs are equally desirable. Especially can we advise them for all the winter resorts at the South; for they bloom at the height of the tourist season, and make a display that nothing can equal at that time.

Planting in Masses. All these bulbs present a fine show of their flowers when planted over considerable spaces, or in masses, as it is termed, and either with each color by itself or in mixture. For those who wish to have beds of Tulips and Hyacinths in colors we offer at most reasonable prices the bulbs assorted in colors, and with these one can make a fine show at little expense. Two collections of Tulips and five of Hyacinths are so offered. No more brilliant and effective display of Tulips can be made than by the use of the single early varieties in mixed colors. We cannot too strongly urge their use in this manner.

The Narcissus. Beloved of all flower growers, and whose praises for ages have been sung by the poets, is, in its numerous varieties, one of the most interesting, graceful, and fragrant flowers. Either in the garden or as a window plant it deserves all the attention that can be bestowed upon it. For growing in water a variety of Narcissus, known as the Chinese Sacred Lily, has become popular; but we can recommend the variety called *Paper White Grandiflorus* as superior to the Chinese. Another excellent variety for the same method of treatment is Grand Monarque. As a garden variety Empress is especially desirable.

Fall Planting of Lily Bulbs. We particularly call attention to the desirability of planting Lily bulbs in autumn instead of spring.

Planting Herbaceous Perennials. Autumn is the time for this work. It should not be delayed until spring, unless absolutely necessary. Many of the most desirable kinds will be found described. Among the older perennial flowering plants there is none more beautiful and in every way desirable than the Chinese Peonies, and they should be more generally planted.

The Shasta Daisy. This is a new plant, and one of the most desirable of continuous blooming perennials. Read the full description and see what a beauty it is. It is one of the most important acquisitions of recent years.

Summer and Fall Blooming Shrubs. In the spring we have many beautiful flowering shrubs; but later these present but little bloom. We call particular attention to the varieties of Spiræas described, most of which bloom through the summer and during the fine weather of autumn. Also, see Kerria Japonica and Hydrangea paniculata grandiflora for summer and autumn bloom.

The Hardy Climbers. Autumn is the best time to set these plants. Prepare the ground for them well, plant and give a covering of leaves in the late fall, and in spring they will start to grow early and give sure satisfaction.

The Small Fruits. Enrich the garden with a plentiful supply of the small fruits—the most valuable table produce of the family garden. The varieties offered in our collection are the most valuable in cultivation.

A Final Word. Let us take time by the forelock, and give the garden this fall the attention it should receive; then, with a good conscience from a knowledge of duty done, we can await the coming spring-time with hope, and afterwards enjoy the beauties and bounties with which kind nature shall favor us.

HARDY FLOWERING BULBS



THE most prominent class of plants demanding attention in autumn is that of the hardy flowering bulbs, the principal kinds, Hyacinths, Tulips, Crocus, Narcissus, Snowdrops, etc., being known by the general name of Dutch bulbs, because they are mostly produced in Holland. The experience gained by many years of trial and observation enables us to select the kind of bulbs that will give the greatest measure of satisfaction, and purchasers may confidently expect that their interests are secure with ours in employing the stock here offered. The lists of named varieties have been restricted to a comparatively few of the best kinds in each color, sufficient for all the variety desired in house culture, and for the garden they can be supplied in quantities for planting in masses of a single color, this method producing the best results in border and beds.

Bulbs in the House.

The window culture of Hyacinths, Tulips, and Narcissus has become very popular, and is a most attractive way of raising these plants which by their beauty and fragrance grace our living rooms in winter. The general treatment of these different kinds of bulbs is the same. A light porous soil just suits them—some garden loam, leaf mould, and sand mixed together. Use five-inch pots for Hyacinths and Narcissus. Place some pieces of broken pot in the bottom so as to secure free drainage and then fill up to about two inches of the top, take a bulb and set it on the soil in the center of the pot, then fill in soil until the bulb is about two-thirds covered. Set the pot down once or twice on the bench with a sharp rap so as to settle the soil and bulb down well. Tulips should be potted the same way, only there may be as many as four or five bulbs in a five-inch pot, and six in a six-inch pot, and they can be buried somewhat deeper in the soil, so that only the points show above the surface. At least three-fourths of an inch of space should remain between the top of the soil and the rim of the pot in order to hold water whenever watering is necessary. When the potting is finished as above described, give water with a watering-can sufficient to wet the soil all through.

Rooting the Bulbs.

Now the pots should be placed away in a dark room or in a cellar, to remain several weeks while the bulbs are making roots, for it is necessary that these should form before the growth of the leaves or flowers. Not much heat is needed for root-growth, and a temperature of 50 degrees is best. It will be a good precaution to take, to set the pots in a box and fill soil in between the pots to keep them from drying out, and then cover the box over closely so that mice cannot get in. Here they can remain from six to ten weeks, or until they have quite filled the pots with roots. Some will root faster than others and will show signs of leaf-growth, and these can be taken up first to the light while the others are left to bring out later, thus causing them to bloom at different times, successively over a number of weeks. They should be placed in a good light in a temperature of 50 to 60 degrees, and freely ventilated on fine days. If one has not pots to use, bulbs can be planted in boxes in the same way as here described. Crocus and Snowdrops should be similarly treated in house-culture.

Growing Bulbs in Water.

Hyacinths are sometimes grown in water, using tall glasses, one for each bulb; these glasses are made with a shoulder to hold the bulb near the top, while the water below comes up just to the base of the bulb. In starting bulbs in water they should be placed away in a dark room until plenty of roots have formed. A favorite way of raising the Chinese Narcissus, or Sacred Chinese Lily, as it is called, is among small stones or pebbles in a glass or porcelain dish containing water, the stones surrounding and supporting the bulb and holding it in

place, and the water kept up to the base of the bulb. Hyacinths may be raised in the same way, if desired.

Bulbs in the Garden.

The Dutch bulbs do well in ordinary garden soil if it is dry, that is, if water does not lie on it in the winter season. A compact clayey soil may be improved for bulbs by mixing with it a quantity of sand. A sandy loam is all that is desirable. The ground should be spaded deep immediately before planting. When planting a large number in a border or bed it is well to remove entirely the upper layer of soil to a depth of four inches and then spade the lower soil a good depth. Rake it smooth and level, and, if possible, spread over the surface a layer of sand an inch in depth; this provides a bed for the roots to run in freely, and enables them to make a vigorous growth from the start. Providing a bed of sand is not absolutely necessary, but if it is convenient to do so it is an advantage. The bulbs, Hyacinths, Tulips, Narcissus, Crocus, etc., are now set on the bed, the largest bulbs from four to six inches apart, and Crocus, Snowdrop, and Snowflake about two inches apart, and when all are in place the surface soil that was removed is gently spread over them without disturbing them, and they thus get covered some three or four inches in depth. At the north bulbs should by preference be planted from the last of September up to November, while at the south November will be early enough. When but a few dozen bulbs are to be planted, they can be set by removing the soil with a trowel to the proper depth, and dropping a little sand into the hole before placing in the bulb is also a good practice, though ordinarily it is not done.

After Planting the Bulbs.

When the bulbs are set and covered, then before hard freezing weather comes they will need to be covered with leaves or litter, enough to prevent the ground from freezing much, for the bulbs are injured by the movement of the soil about them that takes place when the ground thaws, tearing or straining the roots and enfeebling the plants. Early in spring the most of the covering can be removed, leaving a little to remain over the bed until the leaves begin to push, and then clearing it all off.

After the Bulbs have bloomed.

Bulbs in a shrubbery border may be left after blooming without disturbance, and each spring they will renew their growth and bloom. At the last of May or early in June summer blooming plants can be set in between the bulbous plants whose ripening foliage will soon after wither and disappear. When bulb beds are in a conspicuous place, and it is desirable that they should be set early with summer-flowering plants, the bulbs can be carefully lifted with soil attached, taken away, and placed in a trench previously prepared for them in a half shady place. There they can remain until the foliage has decayed, when the bulbs can be removed from the soil and be placed away in a dry, airy, cool place, to remain until time for planting in early autumn.



POLYANTHUS NARCISSUS, PAPER WHITE GRANDIFLORUS



THE ABOVE ILLUSTRATION REPRESENTS OUR UNNAMED BEDDING HYACINTHS photographed at our Farm and Trial Grounds at Despatch, N. Y., where we devote 100 acres to testing all the new and standard varieties of Vegetable, Flower and Field Seeds, Plants, Bulbs, Small Fruits, etc. Hyacinths are increasing in popularity, and when the fact that they will live for several years is taken into consideration, the price is comparatively insignificant. 100 of our best unnamed bedding Hyacinths will plant a bed five feet in diameter. The price is \$3.50 per hundred, not prepaid.

Hyacinths for the House and Garden

The Hyacinth is noted for bright colors and delightful fragrance. All varieties are fragrant. The colors vary in every shade from pure white to the deepest crimson or red and blue and some shades of yellow. The lily-like flowers are somewhat pendant, and closely clustered in racemes forming columns of less or greater height. The flowers are either single or double, and one can select varieties, in this respect, according to taste. For very early blooming the White Roman variety is a great favorite. Its flower spikes are looser and shorter than those of the Holland Hyacinth, but, instead of one, each bulb has usually two or three flower-stems. Three or four bulbs of Roman Hyacinths potted early in the season, in a six-inch pot, will make a fine blooming specimen at the winter holidays. Under the same conditions the Holland Hyacinths bloom later, and a single bulb is sufficient for a five-inch pot. In a six-inch pot three bulbs may be placed, and if the flowers are in three shades, red, white, and blue, a very pretty effect is produced. The time of blooming may be regulated to some extent by holding the potted bulbs in the dark and keeping in a cool place, thus retarding the bloom and allowing the plants to be brought along successively for a number of weeks. For planting in quantities in the garden it is more economical to use the unnamed varieties, the bulbs costing less; these can be planted to form a mass by itself, or mixed if so desired, or in varied designs.

VICK'S SELECTION OF NAMED HYACINTHS

Sold at the uniform price of 12 cents each or \$1.25 per dozen, postage paid

The finest varieties and best bulbs, purchased from the best growers in Holland, and imported direct to meet the desires of those who want the choicest bulbs for the conservatory or window, or to plant in beds of design in the garden. The single-flowered varieties usually give better satisfaction than the double ones, and especially so in house-culture.

At the single and dozen prices we prepay postage to destination. Not less than six of any one variety supplied at dozen rates. Special prices on large quantities.

SINGLE RED AND ROSE

Amy. Bright scarlet.
Baron Van Thuyll. Pink, large spike.
Charles Dickens. Delicate pink.
Fabiola. Rose, handsome bells, large spike.
General Pelissier. Brilliant carmine.
Gertrude. Rosy pink, large, upright spike.
Gigantea. Blush pink, large flowers and very large truss.
Moreno. Fine pink.
Norma. Light pink, large bells and fine truss.
Prince of Orange. Deep pink.
Robert Steiger. Deep red, compact truss.
Romeo. Bright scarlet.

SINGLE PURPLE

Haydn. Lilac-mauve, fine large truss.

SINGLE WHITE.

Alba Superbissima. Pure white.
Albertina. Pure white, large spike.
Baroness Van Thuyll. Flowers snow white, fine large truss, one of the best for any purpose.
Grand Blanche. Blush white.
Grand Vedette. Pure white.
Grandeur a Merveille. Blush white.
La Grandesse. Extra fine snow white.
L'Innocence. Snowy white; fine spike.
La Pucelle d'Orleans. Pure white.
Madame Vanderhoop. Pure white, large bells.
Paix de l'Europe. Pure white.
Pavilion Blanc. Pure white.
Queen Victoria. Pure white.
Voltaire. Creamy white.

SINGLE YELLOW

Ida. Rich golden yellow.
Obelisque. Fine pure yellow.

SINGLE BLUE.

Baron Van Thuyll. Dark bright blue.
Bleu Mourant. Purple blue.
Charles Dickens. Bright blue shading to porcelain blue, handsome tall spike, excellent.
Grand Maitre. Porcelain blue.
King of the Blues. Rich, dark blue.
La Peyrouse. Light blue.
Leonidas. Light blue, large spike.
Leopold II. Light blue.
Marie. Dark blue, purple shade.
Pieneman. Dark porcelain blue.
Priestly. Porcelain blue.
Queen of the Blues. Clear light blue.
Regulus. Porcelain blue, large bells.

DOUBLE WHITE

Bouquet Royal. Pure white, yellow center.
Flevo. Pure white.
Grootvoorstin. Creamy white, large bells.
La Tour d'Auvergne. Pure white, large bells.
La Virginite. Blush white; early.
Prince of Waterloo. Waxy white, large bells.
Sceptre d'Or. White, yellow center.

DOUBLE BLUE

Bloksberg. Porcelain blue, striped and mottled.
Charles Dickens. Dark blue, handsome truss.
Garrick. Azure blue, fine bells and spike.
General Antinck. Light blue, large bells and truss.
Lord Raglan. Purple blue, large bells.
Rembrandt. Light blue, long compact spike.
Richard Steele. Light blue.

DOUBLE YELLOW

Gæthe. Light yellow, fine bells and truss.
Jaune Supreme. Deep yellow, fine spike.

DOUBLE RED AND ROSE

Bouquet Royal. Salmon pink.
Bouquet Tendre. Carmine rose, early.
Czar Nicholas. Blush pink.
Grootvorst. Blush pink, large, early.
Lord Wellington. Extra fine bluish pink.
Noble par Merite. Deep rose, early.
Prince of Orange. Dark rose, very fine.

ROMAN HYACINTH

These Hyacinth bulbs are extra selected and will give the greatest satisfaction, each bulb producing several graceful spikes. We advise early planting, so as to have the bulbs well rooted before commencing to force them. Early delivery can best be secured by sending in your orders at once, so that shipments may be made from the first arrivals.

Early Roman White. Each, 5 cents; dozen, 55 cents; per hundred, \$3.50.

GRAPE HYACINTH

Also called the "Blue Lily of the Valley." About six inches high and very much resembles a bunch of grapes. Planted in groups of a dozen or so, the bulbs produce a mass of lovely blossoms. Plant very hardy. For winter blooming in the house they excel.

Grape Hyacinth, Blue. Three for 5 cents; dozen, 15 cents; per hundred, 80 cents.

White. Two for 5 cents; dozen, 20 cents; hundred, \$1.00.

FEATHER HYACINTH

A peculiar species, improving daily in beauty after once commencing to bloom, and developing finally into an immense blue feathery plume about twelve inches high. It is very desirable for winter blooming, and cultivated as other Hyacinths it will give perfect satisfaction. Two for 5 cents; dozen, 20 cents; per hundred, \$1.00.

HYACINTHS IN SEPARATE COLORS



DOUBLE HYACINTH

Selected especially for Garden Planting and Winter Forcing for Cut Flowers.

Bulbs of unnamed hyacinths are comparatively cheap and can be used in large numbers for beds and borders at no great expense. They are also used largely for winter forcing for cut flowers, and for window plants; when, however, the finest specimen pot plants are desired the named bulbs should be employed.

| SINGLE VARIETIES | DOUBLE VARIETIES |
|--|--|
| Red and rose, all shades | Red and rose, all shades |
| Dark red | Dark red |
| Rose and pink, all shades | Rose and pink, all shades |
| Blush | Blush |
| Snow white | Snow white |
| Dark blue | Dark blue |
| Light blue | Light blue |
| Blue, all shades | Blue, all shades |
| Yellow | Yellow |
| Vick's Special Single Mixed, strong bulbs, sure to bloom | Vick's Special Double Mixed, strong bulbs, sure to bloom |

Prices delivered free to any Post office in the United States, Each, 6 cents; dozen, 65 cents. Delivered at Express office, Rochester, dozen, 50 cents; hundred, \$3.50.

STANDARD COLLECTIONS OF HYACINTHS

These Collections are offered for the benefit of customers who prefer to leave the selection to us. They consist of varieties best adapted for indoor and outdoor planting. As we expect to sell a large number of these fine collections, we are enabled to offer them at *greatly reduced prices*. The quality of the bulbs is the same as offered in our regular list, and can be relied upon for trueness to color and beauty of flower. *Please be particular to specify what collections are wanted.*

COLLECTION A
Hyacinths for House Culture

- Lord Wellington. Single pink.
- Veronica. Brilliant red.
- Queen of Holland. Pure white.
- Lord Grey. Rosy white.
- Lord Beaconsfield. Light blue.
- Mimosa. Dark blue.

Price 55 cents, postage paid.

Collections A and B sent postpaid for \$1.00.

COLLECTION B
Hyacinths for Out-of-Door Culture

- Le Grand Concurrent. Fine pink.
- Louis Napoleon. Dark red.
- Grand Vainqueur. Pure white.
- Triumph Blantine. Rosy white.
- Murillo. Light blue.
- Bride of Lammermoor. Dark blue.

Price 55 cents, postage paid.

HYACINTHS IN BEDS

We have made the following Collections so low in price that all can afford to have a beautiful bed in bloom early in spring at a time when there is a scarcity of flowers.

Hyacinth Bed 6 feet in diameter. Requires 127 Bulbs planted six inches apart. Price delivered \$4.50.

| | | |
|---------------------|---------|-------|
| Center | 1 bulb | Blue |
| First row | 6 bulbs | " |
| Second " | 12 " | " |
| Third " | 18 " | White |
| Fourth " | 24 " | " |
| Fifth " | 30 " | Red |
| Sixth " | 36 " | " |
| Total - - - | 127 | " |

Hyacinth Bed 10 feet in diameter. Requires 217 Bulbs planted six inches apart. Price delivered \$7.75

| | | |
|---------------------|---------|-------|
| Center | 1 bulb | Blue |
| First row | 6 bulbs | " |
| Second " | 12 " | " |
| Third " | 18 " | " |
| Fourth " | 24 " | White |
| Fifth " | 30 " | " |
| Sixth " | 36 " | " |
| Seventh " | 42 " | Red |
| Eighth " | 48 " | " |
| Total - - - | 217 | " |

Hyacinth Bed 12 feet in diameter. Requires 331 Bulbs planted six inches apart. Price delivered \$11.75.

| | | |
|---------------------|---------|-------|
| Center | 1 bulb | Blue |
| First row | 6 bulbs | " |
| Second " | 12 " | " |
| Third " | 18 " | " |
| Fourth " | 24 " | " |
| Fifth " | 30 " | White |
| Sixth " | 36 " | " |
| Seventh " | 42 " | " |
| Eighth " | 48 " | Red |
| Ninth " | 54 " | " |
| Tenth " | 60 " | " |
| Total - - - | 331 | " |

TULIPS

THE beauty of form and the sheen of brilliant colors presented by the Tulip are unequaled by any other class of plants in the floral world. And this scene of beauty is presented in the early spring, almost at the commencement of vegetation. The garden that apparently for months of winter has been lifeless is transformed by the magic of color combinations flaunting from beds and borders of tulips into exuberant, glowing life. This display is like perpetual sunshine, cheering and invigorating nature in its slow revival. For the most beautiful garden effects in early spring plant tulips freely; plant them everywhere—in the coldest northern climates, and in the sunny south; everywhere they will succeed and make a bright and glad scene. The single early varieties in mixture set along a border produce a brilliant show, and as the bulbs are inexpensive they

should be planted freely. Plant the bulbs in beds or borders about six inches apart, with each color in a mass by itself to produce the strongest effect.

DUC VAN THOL TULIPS—The earliest and lowest growing kinds. Good for pot culture and open ground.

TOURNESOLS—The next earliest, coming in two colors, orange-red, and yellow, and with double flowers.

THE SINGLE EARLY TULIPS—Form a very charming class and of a great variety of colors.

THE DOUBLE TULIPS—The same range of colors, and the flowers of long duration.

THE LATE TULIPS—Have the tallest flower stems, are of an indefinite number of colors, and the flowers are of the most perfect shape. The choicest varieties are found in this class, which is divided into sections called *Bizarres*, *Violets*, and *Roses*. The *Bizarres* have yellow ground, marked with some other color. *Violets* have white ground with purple and violet marks. *Roses* have white ground marked or variegated with rose, scarlet, crimson, or cherry. The bulbs are used both in pot and garden culture.

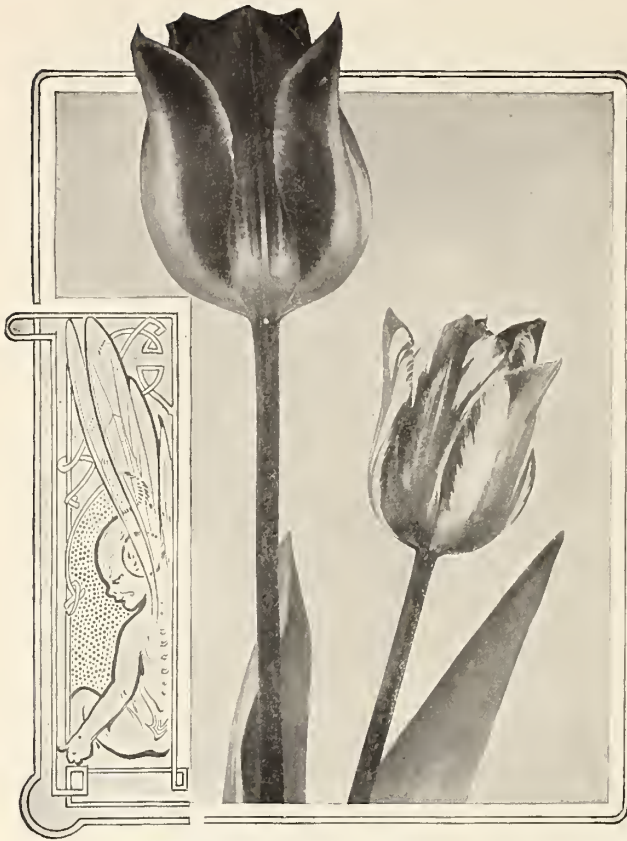
PARROT TULIPS—A very distinct race and the most picturesque of this genus of beautiful and showy flowers. The flowers are large, marked with a combination of the brightest colors, various shades of yellow, red, and green, and instead of being regular in form, the divisions are spread or twisted and wavy as if in wanton grotesqueness to display their grace and brilliancy.



SINGLE EARLY TULIP.

SINGLE EARLY TULIPS

Comprising the finest selections for forcing and bedding. Varieties marked E are the earliest to bloom; E1, following; E2, the latest.



| | | |
|--|----------|---------|
| | DOZ | 100 |
| Artus. (E1) bright scarlet | 3 for 10 | 30 1 50 |
| Belle Alliance. (E1) scarlet | 3 for 10 | 35 2 25 |
| Brutus. (E1) orange crimson, gold margined | 3 for 10 | 30 1 50 |
| Canary Bird. (E) yellow | 3 for 10 | 35 2 00 |
| Chrysolora. (E) yellow | 3 for 10 | 30 1 75 |
| Crimson King. (E1) scarlet | 3 for 10 | 30 1 50 |
| Couleur Cardinal. (E1) bronze scarlet, a flower of great substance; stems long | 05 45 | 3 25 |
| Cottage Maid. (E1) rose and white | 3 for 10 | 30 1 50 |
| Duchesse de Parma. (E1) red edged | 2 for 5 | 20 1 25 |
| Jacht van Delft. (E1) white, | 3 for 10 | 30 1 75 |
| Joost van Vondel. (E1) red and white | 3 for 10 | 30 1 50 |
| Keizerskroon. (E1) scarlet and yellow | 3 for 10 | 35 2 00 |
| L'Immaculee. (E) white | 3 for 10 | 30 1 50 |
| La Reine. (E1) (Queen Victoria) beautiful rosy white | 2 for 5 | 25 1 40 |
| Pax Alba. (E1) fine white | 3 for 10 | 30 1 50 |
| Pottebakker White. (E) | 3 for 10 | 35 2 00 |
| Pottebakker Scarlet. (E) | 3 for 10 | 30 1 75 |
| Pottebakker Yellow. (E) | 3 for 10 | 35 2 00 |
| President Lincoln. (E2) handsome violet | 3 for 10 | 30 1 50 |
| Princess Mariana. (E) white, tinged pink | 3 for 10 | 30 1 50 |
| Proserpine. (E) carmine-rose, large and splendid | 05 45 | 3 00 |
| Purple Crown. (E) purplish crimson | 2 for 5 | 25 1 40 |
| Rembrandt. (E1) scarlet crimson | 3 for 10 | 35 2 00 |
| Rose de Provence. Pink | 3 for 10 | 35 2 00 |
| Rose Grisdelin. (E) soft rose. | 3 for 10 | 35 2 25 |
| Rosamundi Huikman. (E1) white and pink | 2 for 5 | 25 1 40 |
| Standard Royal. (E1) white and red | 3 for 10 | 35 2 00 |
| Standard Royal. (E1) yellow and red | 05 45 | 3 25 |
| Thomas Moore. (E1) orange | 3 for 10 | 30 1 75 |
| Vermilion Brilliant. (E) red | 05 45 | 3 25 |
| White Swan. (E1) pure white | 3 for 10 | 35 2 00 |
| Yellow Prince. (E) yellow | 3 for 10 | 35 2 00 |

SINGLE DUC VAN THOL

The Duc Van Thols are the earliest of the Tulips, and are very desirable for early forcing, coming into bloom throughout December, and especially at Christmas.

| | | |
|--------------------------|----------|---------|
| | DOZ | 100 |
| Red and Yellow | 2 for 5 | 20 1 25 |
| Rose | 3 for 10 | 35 2 25 |
| Scarlet | 3 for 10 | 30 1 75 |
| Crimson | 2 for 5 | 20 1 25 |
| Gold Striped | 3 for 10 | 30 1 50 |
| White. True | 04 40 | 2 50 |
| Yellow | 04 40 | 2 50 |

One bulb each of the above 7 for 20 cts. postpaid.

| | | |
|---|----------|---------|
| | DOZ | 100 |
| Standard Royal. (E1) white and red | 3 for 10 | 35 2 00 |
| Standard Royal. (E1) yellow and red | 05 45 | 3 25 |
| Thomas Moore. (E1) orange | 3 for 10 | 30 1 75 |
| Vermilion Brilliant. (E) red | 05 45 | 3 25 |
| White Swan. (E1) pure white | 3 for 10 | 35 2 00 |
| Yellow Prince. (E) yellow | 3 for 10 | 35 2 00 |

One bulb each of the above 32 Single Early Tulips for \$1.00, postpaid.

Vick's Superfine Early Mixture. 2 for 5 cents; dozen, 20 cts.; hundred, \$1.00; thousand, \$7.00.
 First Quality Single Mixture. 2 for 5 cents; dozen, 15 cts.; hundred, 80 cts.; thousand \$6.00.

HIGHLAND PARK BED OF Single Early Tulips

This beautiful bed is circular, six feet across, or eighteen feet in circumference, requiring a total of 271 bulbs planted four inches apart. The center and first three rows require 37 scarlet "Belle Alliance;" the next three rows 90 "Chrysolora," pure yellow; and the last three rows 144 "L'Immaculee," pure white.

We will furnish the entire 271 bulbs delivered to any express office in the United States for **\$4.50**

OUR FAVORITE BED OF Double Early Tulips

This bed is of the same dimensions and requires the same number of bulbs as that of the Highland Park Bed of Single Early Tulips, but consists of four instead of three varieties. The center and first three rows require 37 "Salvator Rosa," rose and white; the next two rows 54 "Rex Rubrorum," scarlet; the next two rows 78 "Murillo," light rose; and the last two rows 102 "Purple Crown," dark crimson.

We will furnish the entire 271 bulbs delivered to any express office in the United States for **\$6.35**

**DOUBLE TULIPS
FOR BEDS**

The Double Tulips are particularly valuable for making showy beds of bright colors. The extra petals are well developed and combined into a symmetrical head, and like most other double flowers they remain in good condition a considerable time longer than the single flowered varieties under the same conditions.

- Arabella.** Carmine - pink; 3 for 10 cents; dozen, 30 cents; hundred, \$1.75.
- Blue Flag.** Blue; late. 3 for 10 cents; dozen, 35 cents; hundred, \$2.00.
- Crown of Gold.** Yellow, orange shaded. Each, 7 cents; dozen, 75 cents; hundred, \$5.00.
- Crown of Roses.** Rose, large; early. Each, 7 cents; dozen, 75 cents; hundred, \$5.00.
- Duc Van Thol.** Scarlet; early. 2 for 5 cents, dozen, 25 cents; hundred, \$1.40.
- Duke of York.** Red and white; fine; large; early. 3 for 10 cents; dozen, 30 cents; hundred, \$1.50.
- Gloria Solis.** Bronze, orange and crimson; early. 3 for 10 cents; dozen, 30 cents; hundred, \$1.75.

- Imperator Rubrorum.** Red; early. Each, 5 cents; dozen, 45 cents; hundred, \$3.00.
- La Candeur.** White; large; early. 2 for 5 cents; dozen, 25 cents; hundred, \$1.40.
- Le Blason.** Rose and white; early. 3 for 10 cents; dozen, 30 cents; hundred, \$1.75.
- Mariage de ma Fille.** Pure white, rose striped; large; late. Each, 5 cents; dozen, 45 cents; hundred, \$3.00.
- Murillo.** Light rose; early. Each, 5 cents; dozen, 45 cents; hundred, \$3.25.

- | | | | |
|---|----|---|----|
| Peony Gold. Yellow and red; late 3 for 10 | 35 | 2 | 00 |
| Peony Red. Scarlet; late 3 for 10 | 30 | 1 | 75 |
| Purple Crown. Splendid, dark velvety crimson; early 3 for 10 | 30 | 1 | 50 |
| Purple, White Bordered. Early 3 for 10 | 30 | 1 | 50 |
| Regina Rubrorum. Red striped with creamy yellow; early 05 | 45 | 3 | 50 |
| Rex Rubrorum. Fine scarlet; early . . . 3 for 10 | 35 | 2 | 25 |
| Rose Blanche. White; early 3 for 10 | 30 | 1 | 50 |
| Rosine. Rosy white; early 3 for 10 | 35 | 2 | 00 |
| Salvator Rosa. Rose and white; early . . 08 | 60 | 6 | 00 |
| Titian. Brown and yellow; fine 3 for 10 | 35 | 2 | 00 |
| Tournesol. Red and yellow; early . . . 3 for 10 | 35 | 2 | 00 |
| Tournesol. Pure yellow; early 06 | 60 | 4 | 00 |
| Yellow Rose. Beautiful golden yellow; large; late 2 for 5 | 25 | 1 | 40 |

One bulb each of the above 25 for 90 cents, postpaid.

Vick's Superfine Double Mixture. 2 for 5 cents; dozen, 20 cents; hundred, \$1.25; thousand, \$8.00.

First Quality Double Mixed. 2 for 5 cents; dozen, 20 cents; hundred, \$1.00; thousand, \$7.00.

We do not pay charges at the 100 rate.



DOUBLE TULIP

At single and dozen prices we prepay postage or express charges. We do not prepay charges at the 100 rate.

PARROT TULIPS

The most brilliant and showy of all Tulips, and when massed in a bed they make a dazzling show.

- | | | | |
|--|----|---|----|
| Admiral de Constantinople. Red . . . 3 for 10 | 30 | 1 | 75 |
| Cafe Brun. Rich brown 3 for 10 | 30 | 1 | 75 |
| Gloriosa. Yellow and red 3 for 10 | 30 | 1 | 75 |
| Lutea. Yellow 3 for 10 | 30 | 1 | 75 |
| Markgraaf. Red and yellow 3 for 10 | 30 | 1 | 75 |
| Perfecta. Red striped 3 for 10 | 30 | 1 | 75 |
| Superfine Mixed 3 for 10 | 25 | 1 | 50 |

LATE SHOW TULIPS

This class is very attractive and the flowers bloom after the early varieties.

- | | | | |
|---|----|---|----|
| Bizarres 3 for 10 | 30 | 1 | 50 |
| Violets 3 for 10 | 30 | 1 | 50 |
| Roses 3 for 10 | 30 | 1 | 75 |
| Superfine Mixed, Late 3 for 10 | 25 | 1 | 50 |

LATE-FLOWERING GESNERIANA

The most superb of all Tulips. The very large and symmetrically-formed flowers are borne on tall, strong stems, and keep in good condition much longer than any other variety. The color is a brilliant crimson-scarlet, with a deep blue-black base. When grown in masses it produces a magnificent effect. 3 for 10 cents; dozen, 35 cents; hundred, \$2.00.

Add 40 cents per 100 if ordered by mail.

NARCISSUS or Daffodils



The Narcissus in its different forms is one of the most interesting of spring-blooming flowers. It is a flower of antiquity, romance, and poetry. It is a fragrant flower, and so makes an especial appeal to our senses.

The great variety of peculiar and graceful forms which the Narcissus assumes in its numerous species and varieties is particularly agreeable and fascinating. The well-known Daffodil and the Jonquil belong to this family of plants. With the exception of the Polyanthus varieties the bulbs are hardy in all parts of the country, and should be planted in autumn in the garden border at the same time and in the same manner as Hyacinths and Tulips. The named varieties of the Single Narcissus in the following list are those of some of the most beautiful and the most highly prized, and their culture, including also the Jonquils, cannot be too strongly advised; every garden should contain them and have a plentiful supply. The double varieties are less desirable for cutting, but they make a great show in the garden in early spring, and for this purpose they are admirable. The Polyanthus varieties are particularly desirable for window and greenhouse culture, planting three or four in a five or six-inch pot.

All species of Narcissus love plenty of moisture. In pot culture this habit can be observed by keeping the plants freely supplied with water, and when grown among pebbles in bowls of water they are secured from drought.

SINGLE AND TRUMPET NARCISSUS

| | EACH | DOZ | 100 |
|---|----------|-----|------|
| Ard Righ Irish King). Yellow, splendid variety | .06 | 60 | 4 25 |
| Horsfieldii (Queen of Daffodils). Perianth white, yellow trumpet, a magnificent flower | .06 | 60 | 3 50 |
| Empress. A great, splendid flower, of rare beauty. One of the best of the two-colored trumpets. Perianth white and of good substance, trumpet rich yellow. An excellent forcer | .08 | 80 | 5 00 |
| Emperor. Deep yellow, large trumpet | .06 | 60 | 4 00 |
| Biflorus. White and yellow, 2 flowers. | 2 for 5 | 25 | 1 25 |
| Golden Spur. Rich golden yellow, both trumpet and perianth; early, large, and free blooming | .06 | 60 | 4 00 |
| Henry Irving. Rich yellow, frilled trumpet, a magnificent flower | .07 | 65 | 4 50 |
| Leedsii. Pure white, lemon yellow cup | 2 for 5 | 25 | 1 25 |
| Obvallaris (Tenby Daffodil). A beautifully formed flower, rich yellow | .04 | 40 | 2 50 |
| Princeps. Sulphur white, yellow trumpet, one of the best and earliest for winter forcing | 3 for 10 | 30 | 1 50 |
| Poeticus. White, scarlet eye, cannot be forced but fine for garden culture | 2 for 5 | 15 | 60 |
| Poeticus ornatus. Pure white, sweet-scented, fine for forcing, about a month earlier than the Pheasant's Eye | 2 for 5 | 25 | 1 25 |
| Trumpet Major. True golden yellow petals and trumpet, fine for forcing and for cut flowers; the standard single yellow Daffodil | 3 for 10 | 30 | 1 50 |

DOUBLE NARCISSUS

| | | | |
|---|----------|----|------|
| Albo pleno odorato. White, sweet-scented; recommended highly for outdoors for cutting; cannot be forced | 2 for 5 | 25 | 1 25 |
| Incomparable (Butter and Eggs). Yellow and orange, sweet-scented | 2 for 5 | 25 | 1 25 |
| Double Van Sion. The well-known true "Double Yellow Daffodil," 1st size | 3 for 10 | 35 | 2 00 |
| Double Van Sion, Double Nose. Extra large bulbs, producing two or three flowers | .04 | 40 | 2 50 |
| Double Mixed | 3 for 10 | 30 | 1 50 |

POLYANTHUS NARCISSUS

| | EACH | DOZ | 100 |
|--|----------|-----|------|
| Double Roman. White and yellow | 3 for 10 | 35 | 1 50 |
| Gloriosum superbum. White with deep orange cup, fine | .05 | 50 | 2 50 |
| Grand Monarque. White, yellow cup, the finest of all white Polyanthus, excellent for growing in water | .05 | 50 | 2 50 |
| Grand Soleil d'Or. Bright yellow, deep orange cup | .05 | 50 | 2 50 |
| Her Majesty. Fine white | .06 | 60 | 3 00 |
| Paper White, Grandiflorus. The best Narcissus for growing in water. The Chinese or Sacred Lily is usually considered the best variety of Narcissus for water-blooming, and in foliage and amount of bloom it is very satisfactory. In offering this variety as superior to it our friends may think we are drawing on our imagination, but it is a fact that Paper White is far more desirable for that purpose. The flowers are larger, more attractive in color, and are intensely fragrant. Place them in a shallow dish of water, with gravel or small stones at the bottom. Attention is called to the engraving of this plant, showing the bulbs ten days after planting and in full bloom twenty-six days after planting in water. Each 4 cents; dozen 40 cents; hundred \$2.00. | | | |
| One bulb each of the above 6 sorts 25 cents. | | | |
| Superfine Mixed. Three for 10 cents; dozen 35 cents; hundred \$1.75. | | | |

JONQUILS

All the following are particularly desirable for forcing and window culture.

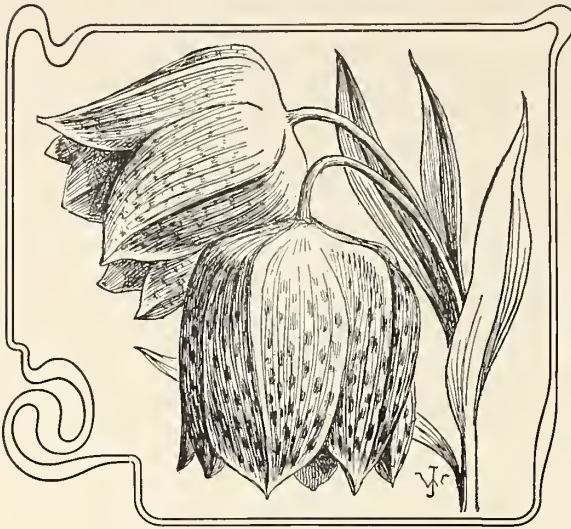
| | | | |
|---|----------|----|------|
| Largest Double. Sweet scented | 3 for 10 | 35 | 2 00 |
| Single. Sweet | 2 for 5 | 15 | 75 |
| Campernel (Great Jonquil. Yellow, fragrant | 2 for 5 | 15 | 1 00 |
| Rugulosus. Large golden yellow, much finer than Campernel | 2 for 5 | 25 | 1 25 |



NARCISSUS, PAPER WHITE, GRANDIFLORUS, 10 DAYS OLD.



NARCISSUS, PAPER WHITE, GRANDIFLORUS, 26 DAYS OLD.



FRITILLARIA MELEAGRIS

CALLA LILY

Richardia Africana

The well known Egyptian Lily, or Lily of the Nile, with large white flowers and broad foliage. An excellent plant for aquariums. In the spring they may be planted in the garden, and left until September, when they may be taken up, potted, and removed to the house or conservatory and will bloom in winter and spring.

Our Calla roots are grown for us in California, where the Calla is perfectly at home and grows magnificently. Large flowering tubers, each, 20 cents; per dozen, \$2.00.

CHINESE SACRED LILY

A variety of Polyanthus Narcissus introduced by the Chinese. The flowers are pure silvery white, with golden yellow cups, chaste and graceful in appearance and of exquisite fragrance. A dozen bulbs started at intervals in shallow bowls of water, three or four bulbs in each dish, with just enough small pebbles or stones to prevent them from toppling over, will give a succession of flowers throughout the winter.

Extra large size bulbs, by mail, postpaid, each 12 cents; per dozen, \$1.35.

ALLIUM NEAPOLITANUM

This species is largely raised in Southern France for its handsome white flowers produced in clusters; and is extensively grown by florists. Six or eight bulbs may be planted in a five-inch pot; they will develop in a low or moderate temperature. Three for 5 cents; dozen 15 cents; 75 cents per 100, postpaid.

IXIA

THE RAINBOW FLOWER

Few flowers attract more attention by their curious forms and strange colorings, nearly all showing three or more colors. Several may be planted in a small pot. There is a greater difference in the form and color of Ixias than in almost any other class of plants. They are easily raised in pots in a cold-frame, window, or greenhouse. Half a dozen bulbs can be put in a four-inch or five-inch pot.

Choice bulbs, three for 5 cents; per dozen, 15 cents; per 100, 85 cents, postpaid.

FRITILLARIA

Very early flowering bulbs, producing large, bell-shaped flowers of various colors. Suitable both for the open garden and for pot culture.

Meleagris (Guinea Hen Flower). Doz. 1 00
Mixed varieties 3 for 10 20 \$1 25
Imperialis. See Crown Imperial.

CROWN IMPERIAL

FRITILLARIA IMPERIALIS

A well-known, stately, hardy plant, which throws up a tall, vigorous stem, and in early spring produces a cluster of large, drooping, bell-shaped flowers, surmounted by a tuft of glossy green leaves. Bulbs should be planted four or five inches deep, and about a foot apart.

Single red, each 15 cents; per dozen, \$1 35.

GARDEN ANEMONE

The Garden Anemones are very beautiful flowers. Some are double, some single, the single varieties being the most brilliant. These Anemones have not been grown generally at the north because somewhat tender, and are not advised except for those gardens which have some shelter, either from buildings or evergreen trees or closely planted shrubs, where on a well-drained border

the bulbs may be planted in autumn and given the protection of a thick coating of stable litter or leaves or evergreen boughs. The flowers are so beautiful that they will give the highest satisfaction when they come into bloom in the spring. Plant them five inches apart and cover three inches deep. The bulbs can also be potted in the fall and kept cool and be brought into bloom in the window or the greenhouse.

Anemone, single. Mixed brightest colors 2 for 5 20 \$1 00
double. Best mixed colors 3 for 10 30 1 50
single scarlet 2 for 5 20 1 00
double scarlet 3 for 10 30 1 50
single pure white (The Bride) . . . 2 for 5 20 1 00

COLCHICUM

THE AUTUMN-FLOWERING CROCUS

The Colchicum, Autumn Crocus, is a curious and interesting flower. The leaves appear in the spring, and the flowers in the autumn. The bulbs are perfectly hardy. Each bulb gives quite a cluster of flowers, generally six or eight, and so persistent is it in its determination to flower that if taken up early in the autumn before the time for flowering, and placed in a pot or basket, it will bloom just as well as if left in the ground.

Colchicum Autumnale. Pink. Each, 5 cents; per dozen, 50 cents.

Fine Mixed. Each, 5 cts.; per doz., 50 cts.

CHIONODOXA

Spring flowering plant, producing Scilla-like flowers; hardy and early. Excellent for winter blooming in the house, and also for cut flowers.

Chionodoxa Lucillæ. Azure blue. Two for 5 cents; per dozen, 20 cents; per hundred, \$1.00.

Sardensis. Fine dark blue. Two for 5 cts.; per doz., 20 cts.; per hundred, \$1.25.



CHIONODOXA

CROCUS

The First to Bloom in the Spring

THE CROCUS and the Snowdrop are the first flowers to appear in our gardens; they come as soon as the frost is out of the ground and while frosty nights still occur, but they are brave and hardy little heralds of the spring. The bulbs should be planted so as to cover quite a space on a flower border, or they may be set about two inches apart in a row as an edging. After flowering the bulbs may be taken from the ground and kept in a dry place until planting time in the autumn, or may be allowed to remain in the ground; it will make no difference, except that those remaining undisturbed will be likely to flower a week or ten days earlier than those which have been replanted.



A very pretty effect is secured by planting the bulbs in large numbers on the lawn or front grass plat. They can be set in by thrusting down a narrow spade or a trowel and spreading the opening a little, sufficient to place in the bulb, and then crowding it together. In this way they are quickly planted and the sod is not disturbed. In early spring the flower appears on its stem above the grass, and in our northern country it is a surprise to see the faces of these bright bloomers as soon as winter has gone. By the time it is necessary to run the lawn mower over the grass the flowers will have disappeared and no harm will come to them from the mower, but the bulbs will remain to send out again their flowers each succeeding spring.

NAMED CROCUS

| | DOZ. | 100 |
|--|---------|-------|
| Albion. Striped | 2 for 5 | 15 75 |
| Baron von Brunow. Dark blue | 2 for 5 | 15 75 |
| Cloth of Gold | 2 for 5 | 15 75 |
| Cloth of Silver | 2 for 5 | 15 75 |
| Mont Blanc. Pure white | 2 for 5 | 15 75 |
| Non Plus Ultra. Variegated | 2 for 5 | 15 75 |
| Robert Peel. Light blue | 2 for 5 | 15 75 |
| Sir Walter Scott. Variegated | 2 for 5 | 15 75 |
| Mammoth Yellow. Flowers of enormous size | 2 for 5 | 15 80 |

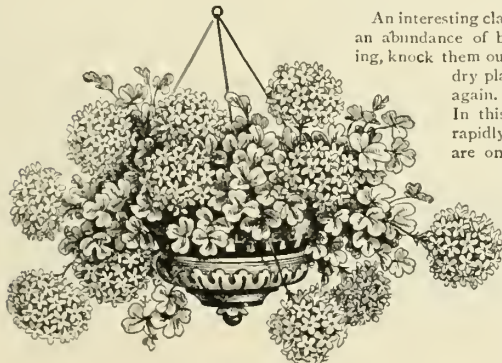
CROCUS IN COLORS

| | DOZ. | 100 | 1000 |
|----------------------------------|------|-----|--------|
| Blue and Purple | 10 | 45 | \$3 00 |
| White | 10 | 45 | 3 00 |
| Striped and Variegated | 10 | 45 | 3 00 |
| Yellow | 10 | 50 | 3 50 |
| All colors mixed | 10 | 40 | 2 50 |

We do not pay postage on Crocus in hundred lots. If wanted by mail add 20 cents per 100, otherwise we will send by express at expense of purchaser.

OXALIS

An interesting class of small bulbs, desirable for winter-flowering in pots, producing an abundance of bloom. Plant from three to five bulbs in a pot. After flowering, knock them out of the pots, separate and plant in fresh soil, keeping them in a dry place. About August or September they will commence growing again. Then bring them to the light and air and commence watering. In this way the bulbs will keep sound all summer, and will increase rapidly. The leaves resemble in form the clover leaf. As the leaves are on long slender stalks, and consequently droop, the Oxalis can be readily adapted to hanging baskets and other similar purposes. The following are the best of the winter-flowering varieties, and may be grown either in pots or hanging baskets.



Oxalis, Buttercup. This improved variety produces bulbs, plants and bright yellow flowers in greater profusion and size than any other of the species 04 40 2 50

| | | | |
|---|----------|----|------|
| Arborea alba. White | 04 | 40 | 2 50 |
| Bowiei. Bright rose | 3 for 10 | 30 | 1 50 |
| Cernua flore-pleno. Double yellow | 04 | 40 | 2 50 |
| Versicolor. Variegated | 2 for 5 | 20 | 1 25 |
| All colors mixed | 2 for 5 | 20 | 1 00 |



SPANISH IRIS

JAPAN IRIS

IRIS KÆMPFERI

The flowers of the Japan Iris are of the richest colors, ranging from white to purple, with delicate markings and veinings and quite different in form from those of the German Iris, being much flatter and larger. Some of the flowers are eight inches in diameter. Named varieties, each 15 cents; six for 75 cents; dozen, \$1.25.

We also offer mixed varieties at 10 cents each; \$1.00 per dozen.

DOUBLE VARIETIES

Blue Jay. Large flowers; fine azure blue, freely mottled.

Crimson Tuft. Deep plum, richly shaded, and brightly marked yellow.

Gold Bound. Tall and showy, with flowers of enormous size, probably the most beautiful of all. Pure snow-white, with large gold-banded center.

Gypsy. Crimson-purple, distinctly veined bright yellow; rayed center.

Hannibal. Light blue, freely veined indigo, yellow center.

Mahogany. Very large flower, deep mahogany-red.

Mt. Fell. White, veined blue.

Mt. Hood. Light blue, shaded darker. Bright orange center.

New York. Fine bright purple, mottled.

Orion. Very tall; pure white, each petal having a wide border of lilac-red.

Oriole. Deep crimson-amaranth, yellow center.

Pyramid. Tall and showy, flower very large; light violet-blue with slight white veins.

P. C. de Rohan. Purplish blue, shaded violet and red.

Templeton. Bright violet, shaded and mottled reddish pink and white.

Victor. Fine porcelain-blue; veined.

IRIS

The Iris or Flower de Luce, the *Fleur-de-lis* of the French, is one of the most beautiful of hardy garden plants. There are several distinct species of these plants, natives of different regions, and each presents many garden varieties, the flowers of which are of peculiar and handsome formation, beautifully colored and marked and equal in real beauty to the most showy orchids. The plants are hardy in the open garden, and some kinds are desirable for greenhouse culture.

| | DOZ | 100 |
|---|-----|------|
| Anglica, or English. Large, handsome flowers 2 for 5 | 25 | 1 50 |
| Hispanica. Well adapted for pot culture and forcing in the winter. Mixed varieties . . . 3 for 5 | 15 | 85 |
| Pavonia (Peacock). Small beautifully marked flower; desirable for window culture . . . 3 for 10 | 35 | 2 00 |

GERMAN IRIS

German Iris, a good old flower, handsome and as perfectly hardy. They bloom in May and June, when there is also a scarcity of flowers. Plant three inches deep. Each, 15 cents; six for 60 cents; dozen, \$1.00.

Canary. Canary-yellow.

Celeste. Light blue.

Gesneriana. White, bordered lavender-blue.

Phidias. Bright yellow, lower petals mahogany.

Souvenir. Old gold and purple.

Velveteen. Yellow, lower petals rich reddish purple.



JAPAN IRIS

FREESIA

This is a delightful winter-blooming plant for window and conservatory. The bulbs are small, and six or eight can be planted in a five-inch pot. The earlier the bulbs are potted, the better, setting them down so that the soil will cover the tips. They will start both root and top growth without much delay, and can easily be had in bloom by Christmas. Be careful to keep them moist and in a moderate temperature. The flowers, which are white with a blotch of yellow at the throat, and about an inch in length, are produced in a raceme of five to eight, each standing erect; they are deliciously fragrant. The stems cut and placed in water keep well. After the plants have bloomed they can be given less and less water until the leaves have died, when the bulbs can be dried off and laid away until the following autumn.

DOZ 100

Freesia refracta alba, selected bulbs,
 large or so-called Mammoth or Monster
 Bulbs 2 for 5 25 1 25
 At these prices we prepay postage.

LEUCOJUM

Leucojum vernum or Spring Snowflake resembles a monster Snowdrop; very useful for cutting; also makes a beautiful border or cluster around the edges of shrubbery. Well suited for pot culture. Flowers white, with bright green spots.

DOZ 100

Leucojum vernum 2 for 5 30 1 50
 At these prices we prepay postage.



LILY OF THE VALLEY

*"No flower amid the garden fairer grows
 Than the sweet lily of the lowly vale."*

One of the most charming and greatly admired plants grown. The bulbs, or pips, can be planted in a bed out doors, or they can be potted four to six in a four-inch pot, which can be left in a cool place for a time, and even if exposed to a sharp frost are not injured, but apparently benefited thereby, and then with plenty of warmth, light and water, they will soon produce beautiful green leaves, and sprays of lovely white and exquisitely fragrant blossoms. One or more pots may be sunk in the garden and left until wanted. It requires from three to five weeks for them to perfect their flowers if kept very warm and given plenty of water. Like those of other bulbs the flowers are larger and very much finer when raised in the house than in the garden.

EACH DOZ
 Vick's Extra Selected 5 50

ORNITHOGALUM

A beautiful and showy plant. The flower spikes are from eighteen to twenty-four inches high, bearing numerous pearly white flowers with jet-black center, and with a perfume distinctly aromatic. The bloom remains perfect for many weeks. When grown in the garden they make an interesting and pretty sight. The plants are desirable for greenhouse or window decoration, and florists are now growing them largely for their value as cut flowers.

| | | | |
|---------------------------------|------|-----|--------|
| | EACH | DOZ | 100 |
| Ornithogalum Arabicum | 05 | 50 | \$3 00 |

RANUNCULUS

The bulbs of the so-called Garden Ranunculus are somewhat tender in northern climates, where they can be recommended only for pot culture. The flowers are both single and double and of a great variety of colors. The bulbs have tooth-like prongs or claws and should be set with the claws downwards. The bulbs can be kept in sand in a low, even temperature through the winter, and can then be planted in the garden early in the spring. At the south they can be planted out in late autumn. In growing the plants in pots they should have a cool, moist atmosphere, such as afforded by a cool greenhouse.

| | | |
|---------------------------------|---------|---------|
| | DOZ | 100 |
| Double Persian, mixed | 2 for 5 | 20 1 00 |
| Double Turban, mixed | 2 for 5 | 20 1 00 |
| Double French, mixed | 2 for 5 | 20 1 00 |

At these prices we prepay postage.

SPARAXIS

These are small bulbs with flowers of many colors, like those of the Ixia, and they require the same treatment. They make beautiful winter-blooming plants. Several bulbs can be planted in a small pot, or a box in the window planted with Ixias and Sparaxis will give a great display of bright colored, beautiful flowers.

| | | |
|---------------------------|---------|-------|
| | DOZ | 100 |
| Sparaxis, mixed | 2 for 5 | 15 75 |

At prices quoted we prepay postage.



SCILLA



"The first pale blossom of the unripened year."

It is almost an even race between the Snowdrop and the Crocus to appear in the spring, the Snowdrop coming a few days first. As the name indicates the flowers are white, and instead of standing upright like the Crocus they are nodding on stems about six inches in height. The bulbs should be planted close like those of the Crocus, and they too, like the latter, can be planted on the lawn where they will maintain themselves for a number of years. They make very pretty pot plants for the window, starting several bulbs in a pot.

| | | |
|--------------------------------------|----------|---------|
| | DOZ | 100 |
| Galanthus, Single Snowdrop | 2 for 5 | 20 1 00 |
| Double Snowdrop | 3 for 10 | 30 2 00 |
| Elwesii, Giant Snowdrop | 2 for 5 | 20 1 00 |

At prices quoted we prepay postage.

TRITELEIA

Triteleia uniflora is a South American species. The common name for it is Spring Starflower. Flowers pale blue, two to two and a half inches across, borne singly, very rarely two, on stems from nine to eighteen inches high. A good pot plant and the bulbs increase rapidly.

| | | |
|------------------------------|---------|-------|
| | DOZ | 100 |
| Triteleia uniflora | 2 for 5 | 15 75 |

At prices quoted we prepay postage.

SCILLA

Two of the best ornamental species of this genus of bulbous plants are here offered. The plants bloom before the leaves appear. The flowers, about an inch across, are borne in clusters on stems about four inches in height. *S. Siberica* produces flowers of an intense blue, while those of *S. præcox alba* are pure white. After the flowers are gone the leaves appear and a new growth of bulbs takes place; the bulbs are hardy, quite small, and should be planted in a group in the garden where they may be left. The plants can also be grown in pots, six or eight bulbs in a four-inch or five-inch pot, and will do well in a window or cool greenhouse. Do not give them a warm place. After growing in pots the bulbs can be turned out into the garden border.

| | | |
|--|----------|---------|
| | DOZ | 100 |
| Scilla Siberica. Bright intense blue | 2 for 5 | 20 1 00 |
| præcox alba. Pure white | 3 for 10 | 30 2 00 |

LILIAM AURATUM

LILIAM TENUIFOLIUM

GOLDEN DAY LILY
(HEMEROCALLIS AURANTIACA MAJOR)

Vick's Garden Lilies

Autumn is the best time for planting the bulbs.

THE Lily is a favorite flower everywhere. *Lilium candidum* does best when planted in August or September. This variety is valuable for forcing, and is used extensively for this purpose. The method is to plant the bulbs in six-inch pots, barely covering them with soil, then plunge them in the garden in a warm, sheltered place, and let them remain there until the pots are well filled with roots, after which they may be removed to the house or conservatory, where they will flower in eight or ten weeks.

After long experience, the varieties named in the following list are offered as forming the best collection of hardy Lilies that can be advised for garden culture. It not only embraces the most beautiful, but there is not one in the list difficult of culture, or that may be likely to disappoint the planter, if we except the *Auratum*, which sometimes proves a little treacherous; all the others can be easily reared, and most of them will improve if left undisturbed a number of years. In forcing *L. Harrisii* or *L. japonicum longiflorum*, plant them in six-inch pots half filled with a rich soil, sink the bulbs, leaving just the tips exposed. After the bulb has thrown its stem above the top of the pot, fill the pot with rich soil composed mostly of well-rotted cow manure, as these bulbs throw out rootlets from the stem above the bulb.

Lilium auratum. The magnificent gold-banded EACH DOZ
Lily of Japan; freely spotted with crimson
red; sweet-scented. Blooms about July 15th
Extra large bulbs. 25 \$2 50
Batmanniæ. A beautiful Japanese variety;
flowers upright, of clear apricot yellow; strong
and hardy; should have a place in every garden.
Blooms about July 15th 20 2 00
Canadense. Our native Lily; flowers drooping,
delicate scarlet, yellow throat, spotted black.
Blooms July 10th 15 1 25

Candidum. Common white garden Lily; hardy, EACH DOZ
free bloomer, fragrant 15 \$1 50
Elegans. Best light red 10 1 50
Elegans incomparabile. Blood red 15 1 00
The above three varieties bloom about July 1st.
Hansoni. A rare early-flowering species of a
beautiful yellow color, petals very thick,
dotted with purple. One of the handsomest
varieties. Blooms second week in June 75 7 50
Humboldtii. Orange, spotted claret. Extra
fine. Blooms July 15th 30 3 00

| | | | |
|--|-----------------------|---|-----------------------|
| Lilium Harrisii. (Easter Lily.) The flowers are pure white, trumpet-shaped, and are unexcelled in beauty by those of any other species, while the fragrance is simply exquisite. By starting the bulbs at intervals of a few weeks, a succession of bloom may be had for a long time. Many dealers offer small-sized bulbs, but we send out only the extra large size | EACH DOZ 20 \$2 00 | Speciosum rubrum. White and rose, dark crimson spots | EACH DOZ 20 \$2 00 |
| Japonicum longiflorum. White, trumpet-shaped. Blooms about July 20th | 15 1 50 | Speciosum Melpomene. Crimson, spotted with deep blood red; each petal distinctly bordered with white. Same habit of growth as rubrum; stems dark and color of flower much deeper . . | 20 2 00 |
| Krameri. Deep rosy pink. Blooms June 15th. | 20 2 00 | Speciosum album. White | 20 2 00 |
| Leichtlinii. Canary-yellow, spotted red. Very rare. Blooms August 15th | 40 4 00 | <i>The above three bloom about August 15th.</i> | |
| Leichtlini Maximowiczii. Flowers salmon-scarlet, studded with large purple dots. Will become popular on account of its long season of bloom—from August until frost comes . . | 25 2 50 | Superbum. Yellow and orange-red; drooping. Three to six feet high, bearing from five to twenty flowers. Blooms July 15th | 15 1 50 |
| Pardalinum. The best of the Canadense class. Yellow and red spotted. Blooms about July 10th | 20 2 00 | Tenuifolium. One of the most beautiful and delicate of the early-flowering varieties. Flowers dazzling vermilion-scarlet, suspended from slender, graceful stems; they are so bright as to attract attention from a great distance. The first to bloom | 20 2 00 |
| Parryi. Pure lemon yellow. Long trumpet-shaped. Very fine | 30 3 00 | Tigrinum splendens. Tiger Lily. Blooms about August 1st | 10 1 00 |
| Rubellum. New. Bell-shaped flowers of a fine deep pink color, from two to three inches long. This variety and <i>L. tenuifolium</i> are the first to bloom | 40 4 00 | Tigrinum fl. pl. Double Tiger Lily. Blooms about August 15th | 15 1 50 |
| | | Wallacei. Flowers rich vermilion-orange, spotted with maroon. Blooms in the autumn. Fine | 20 2 00 |

For \$1.00 at single rates purchasers may select to amount of \$1.25. For \$2.00 at single rates purchasers may select to amount of \$2.50.

THE DAY LILIES

The Day Lilies are hardy garden border plants, bearing large Lily-like flowers. The plants can be set in autumn, and may receive the protection of a light covering of leaves the first winter after setting out.

- Funkia alba, or White Day Lily.** Each 15 cents.
- Japonica.** Light blue, with narrow foliage. Each 15 cents.
- Cœrulea.** Dark blue, with broad, glossy foliage. Each 15 cents.
- Undulata media picta.** Flowers lavender, foliage light green, beautifully variegated with white; one of the most beautiful hardy plants in cultivation, and without an equal for cemetery planting. Each 20 cents.
- Hemerocallis flava.** Yellow or Lemon Lily. One of the best hardy border plants; flowers clear canary yellow, very fragrant. Each 15 cents.

One bulb each of the preceding 5 sorts 60 cents.

Golden Day Lily (*Hemerocallis aurantiaca major*). One of the finest perfectly hardy herbaceous plants which has been brought out for many a year. The habit of the plant is vigorous; the foliage rises to a height of two feet, and is of a deep green. The flower spikes are strong, bearing as many as twelve flowers in succession, which are seven to eight inches across, of a rich orange-yellow, quite distinct. Each 40 cents; two for 70 cents.

Six Choice Lilies for \$1.00

The six varieties of Lilies illustrated on pages 17 and 18 we offer in a collection for \$1.00, or two collections for \$1.75, express or postage prepaid.



LILIAM LONGIFLORUM

L. ELEGANS INCOMPARABILE

L. SPECIOSUM RUBRUM

Ornamental and Winter-Flowering Plants

WITH few exceptions, the following plants are such as can be easily grown in any ordinary parlor, sitting-room, or greenhouse. As it is much more difficult to pack a single plant so that it will carry safely, than a larger number, we trust our customers will order accordingly. For economy and safety in packing it is best to order at least a dollar's worth of plants.

ABUTILON

FLOWERING MAPLE.

Hard-wooded greenhouse shrubs, blooming almost the entire year; well adapted for house culture. Flowers bell-shaped and drooping. Plants 10 cents each; \$1.00 per dozen.

Abutilon Savitzii. Leaves green, with heavy white border, more than one-half of the leaf being pure white.

Eclipse. A trailing variety, beautifully marked deep green and yellow; flowers bright yellow, with crimson throat.

Golden Fleece. Large, showy, bright yellow flowers.

Thompsoni plena. Flowers large, full, and perfectly double; color rich orange, shaded with crimson.

Seraph. Pure white dwarf.

Souvenir de Bonn. Foliage large, of a deep green color; each leaf edged with a broad white margin; flowers pink, striped with crimson.

ACHANIA

Achania Malvaviscus. One of the most satisfactory house plants grown, with scarlet flowers; blooms summer and winter; not subject to insects of any kind. Each 15 cents.

AMARYLLIS

The Amaryllis is very desirable for growing in pots, producing showy flowers. The bulbs should be potted in a rich sandy loam, with good drainage. They require abundant moisture when growing, but at their season of rest water should be given sparingly.

Amaryllis Johnsoni. Flowers crimson, five inches in diameter, each petal striped with white. Flower stalk two feet high, with clusters of two to five blooms. Each 50 cents.

AMOMUM

Amomum melegueta, (Cardamom). An interesting greenhouse plant from Africa; grows much like the Canna; leaves broad, green, and pleasantly fragrant. Each 15 cts.

ARAUCARIA EXCELSA

Norfolk Island Pine One of the best tender evergreens for house-culture. Very handsome and decorative. \$1.00 each.

ANTHERICUM

Anthericum vittatum variegatum. An elegant house plant, with dark green leaves bordered with broad stripes of pure white. It throws up long spikes of small, star-shaped flowers. Fine for hanging baskets. Each 20 cents.



BABY PRIMROSE

BABY PRIMROSE

Primula Forbesi. Needs but little care. It forms a dense rosette of fleshy leaves, from which spring the flower stems about twelve inches tall; delicate rosy-lilac flowers produced in great abundance. Each 15 cents; two for 25 cents.

ASPARAGUS SPRENGERI

One of the most rapid growing plants, making in a very short time great masses of fine, feathery, drooping foliage, exceedingly graceful and beautiful. The stems grow several feet in length, and are valuable for use in cut-flower work. As a house plant it has no superior, as it withstands the indoor temperature well. Each 15 cents; larger plants 25 cents and 50 cents each.

AZALEA

The diversity of color and free-blooming qualities of the different varieties of Azalea make them exceedingly popular. After blooming in the house place the plants in a shady spot out of doors during summer, and remove to the house in fall for winter blooming. Color from pure white to dark crimson. Price, 10-inch heads, each \$1.00; 12-inch heads, each \$1.25; 14-inch heads, each \$1.50; 16-inch heads \$1.75.

At prices quoted in this Catalogue, we
prepay postage or express charges,
unless otherwise noted.



FLOWERING BEGONIA

FLOWERING BEGONIAS

This class of beautiful plants is deservedly popular. The beauty of foliage, combined with graceful flowers and free-blooming qualities, makes the plants highly desirable. As pot plants for winter decoration they have few equals. Each, 15 cents; per dozen, \$1.25, except where noted.

- Begonia argentea guttata.** A purplish-bronze, handsomely marked with silvery spots and dashes. The flowers are borne in large clusters on the tips of the branches, and are of pure waxy whiteness.
- Alba picta.** Leaves narrow, green, and nicely spotted with white; flowers white, in clusters.
- Bertha de Chateau-Rocher.** Flowers bright currant-red; splendid.
- Haageana.** Flowers creamy white; foliage bronze green and red.
- Duchartrei.** Purplish red leaves; blooms in panicles. Each 25 cents.
- Metallica.** A shrubby grower and free bloomer. Surface of leaf of a lustrous metallic or bronze color, veined darker; flower white.
- Sandersoni.** Scarlet; fine winter bloomer.
- Velutina.** Erect growth; dark rough foliage of a lustrous bronze green on upper surface, under side reddish bronze; flowers reddish white.
- Zebrina.** Foliage dark green, with whitish veins; flowers light pink.

REX VARIETIES

The Rex varieties of Begonia are very effective as pot plants. Care should be taken to keep the foliage free from dust. Occasionally the plants may be showered, but should not be exposed to the sun until the leaves are perfectly dry. Each 20 cents; \$2.00 per dozen.

- Andalusia.** Silvery green, with deep green border.
- Edouard Andre.** Silvery green, with narrow green border.
- Roi Ferdinand Major.** Large silver leaf, dark center, edged with same color.
- Walter Reid.** Deep green, with irregular silver zone; leaf small.

CAREX JAPONICA VARIEGATA

A Japanese grass, very useful and ornamental for the house. Seems to enjoy the atmosphere of living-rooms. Each 15 cents; two for 25 cents.

CYCLAMEN PERSICUM GIGANTEUM

The Cyclamen is particularly adapted for window-culture, as it blooms abundantly and for a long time in the winter and spring. The flowers are borne on long stems above the foliage, and are very showy. Strong bulbs, each 25 cents.

CALLA

Calla fragrans. Resembles the old variety in size and color of flower, but has strong and distinct fragrance. Each 25 cents.

Little Gem. A dwarf variety of the old Calla, eight inches high, free bloomer. Each, 15 cents; two for 25 cents.

CYPERUS, Umbrella Plant

Cyperus alternifolius. A beautiful plant, easily grown. It makes a very showy plant for pot culture, is one of the best for ferneries, while for the aquarium it is without an equal. May be grown in soil kept constantly wet, or in a dish or vase of water. Each 10 cents.

LACE FERN

Asparagus plumosus nanus. Beautiful on account of its light feathery growth, which very much resembles lace. The graceful dark green foliage surpasses the Maiden-Hair Fern in delicacy of texture. Splendid as a pot plant and for decorative purposes. Each 20 cents; two for 35 cents.

CARNATIONS

The Carnation is both beautiful and fragrant, and gives plenty of flowers for a long time. The ever-blooming varieties are admirable for winter flowers in the house, and are the main dependence of the florist for the preparation of floral ornaments.

Strong field-grown plants, 30 cents each; two for 50 cents. This size furnished from September 15th to December 1st. Young plants, just right for winter blooming, 15 cents each; six for 80 cents; 12 for \$1.50.

Armazinda. Snow-white, lightly penciled with scarlet.

American Flag. The flowers are regularly striped with scarlet and pure white, with foliage of metallic blue.

General Gomez. Brilliant cardinal-maroon.

G. H. Crane. A model scarlet, early and continuous bloomer.

Genevieve Lord. Flowers unusually large, beautiful pink.

Olympia. Glossy white, penciled with scarlet.

Portia. Bright scarlet.

Red Jacket. Most decidedly the best red Carnation.

The Marquis. Flowers large; bright shade of soft pink.

Triumph. A rich, pure pink, a little darker than Wm. Scott; flowers often measure three and one-half inches across; very early and free bloomer.

William Scott. Clear delicate rosy pink.



BOSTON DROOPING FERN

One of the most satisfactory of all decorative plants for house-culture. The handsome green fronds attain a length of four to five feet, and droop gracefully over on every side. Each 15 cents; extra large plants, each 75 cents

MOSS FERN

Selaginella Emiliania. Although this is commonly called a Moss Fern it belongs to the Lycopodium family. It is a handsome plant, of upright growth, graceful and pretty. Useful for fernery. Each 10 cents.

FERNS FOR DECORATION

Ferns cannot be dispensed with in elaborate decorations for the parlor. A single plant of the Sword Fern is as useful in producing a graceful effect as any plant we know of. In planting a fernery do not crowd them, but give room for the development of the fronds; their growth is rapid, and many varieties soon double their original size. Be your own florist and fill your fern dishes at home. Five of the best and hardiest varieties are sufficient to fill a fern dish eight inches in diameter. Each 15 cents; the set of six for 60 cents.

- Adiantum cuneatum*. The popular Maiden-Hair Fern.
- Adiantum gracillimum*. The smallest and most graceful of the Maiden-Hair Ferns.
- Cyrtomium falcatum* (Holly Fern). One of the most desirable Ferns for house-culture.
- Pteris adiantoides*. A strong-growing variety, with deep green foliage.
- Pteris Cretica albo-lineata*. A pretty and useful variegated variety; leaves green and white.
- Pteris serrulata*. A very graceful fern, useful as a pot plant or for fern dishes; leaves green.

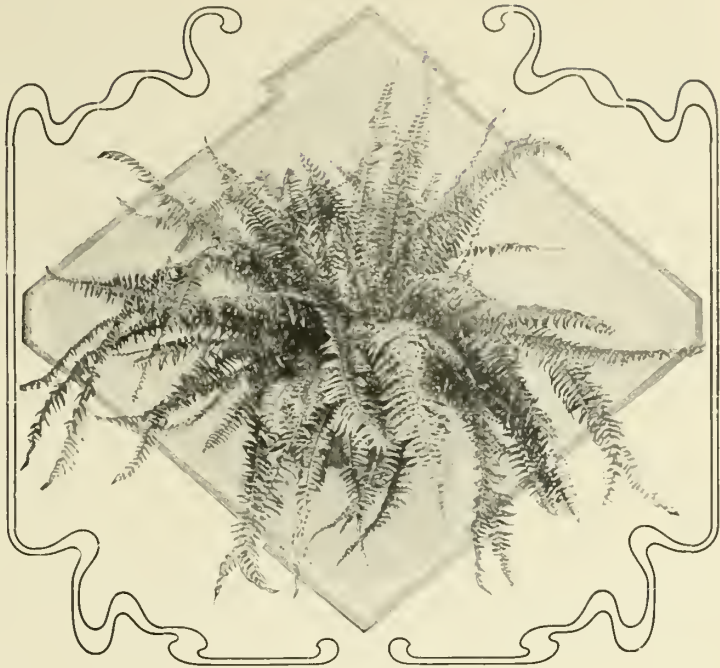
JAPANESE FERN BALL

This beauty is an importation directly from Japan. It comes in a dormant condition, and is a most satisfactory house plant, needing little care, and sure to thrive. After watering it starts into life, and in a short time is covered with a mass of beautiful green fronds. The ball should be allowed to dry up in November and rest until January or February, and may then be started by watering as before. When growing it should be watered two or three times a week. A ball may also be cut in halves and used in a fern dish. Our first shipment will arrive in December in time for Christmas delivery. Each 75 cts.; two for \$1.25.

FUCHSIA

CHOICE SELECTIONS FROM LEMOINE'S HYBRIDS

- Fuchsia Mary*. A profuse bloomer; the drooping flowers, over two inches long, are a brilliant crimson-scarlet. Altogether it is a very unique plant, and a fine addition to the window-garden or conservatory. Each 15 cents.
- Triphylla hybrida*. Entirely distinct from any other variety. Flowers intense rich carmine, produced in great profusion. Each 15 cents.



THE BOSTON DROOPING FERN

FUCHSIA

SINGLE

Strong plants, each 10 cents, except where noted.

- Black Prince**. Corolla reddish rose, sepals carmine.
- Constancy**. Flowers large, corolla carmine, sepals white.
- "Silver King."** New Type Fuchsia. One of the most striking plants that has been introduced in many years. A silver-leaf Fuchsia, literally covered with handsome blossoms. It is of strong and compact growth, and in a short time forms a perfect specimen. Each 20 cents.
- Rosalind**. Tube and sepals white; corolla magenta-pink.

DOUBLE

Strong plants, each 10 cents.

- Deutscher Kaiser**. Sepals rosy crimson; corolla violet-purple.
- Gigantea**. Tube and sepals carmine; corolla a shade of light magenta. Large and fine.
- Beauty of West Kent**. Corolla white, heavily shaded with crimson; tube and sepals red.
- Molesworth**. Sepals red, nicely recurved; corolla pure white; very large.
- Phenomenal**. Corolla violet-purple, sepals bright carmine.

DWARF-GROWING PLANTS

- Handsome little bushy plants, covered with flowers all summer; taken into the house they will bloom there a greater part of the winter. Each 15 cents; two for 25 cents.
- Bouquet**. Bushy plant, producing a prodigious number of good-sized flowers of beautiful form.
- Miniature**. Plant quite dwarf; flowers small; sepals a vinous red; corolla violet, and of elegant form.
- Little Beauty**. A perfect gem; blooms when only about two inches high, and continues in flower the year round. Bright red tube and sepals; corolla rich purple.



OTAHEITE ORANGE

The best Double and Single Geraniums

FOR HOUSE CULTURE

Price of all Geraniums, each to cents; three for 25 cents; per dozen, \$1.00, except as noted.

SINGLE VARIETIES.

- Geranium, Beauty. White, with pink center.
 Chancier. Cerise; a beautiful, clear, bright shade.
 J. Sallier. Carmine-lake, shaded with orange and rose.
 M. P. Morlau. Bright rosy salmon, center white.
 Queen of the Whites Improved. Pure white.

DOUBLE VARIETIES

- Beaute Poitevine. One of the finest of the semi-doubles.
 Color bright salmon-pink, delicately shaded and tinted from deep orange to pure salmon.
 Eulalie. Bright salmon; beautiful and well-formed flower.
 La Favorite. The best pure white.
 Madame Jaulin. Delicate pink, bordered pure white.
 Madame la Comtesse de Baume. A charming bright pink; fine large bloom and truss.
 S. A. Nutt. Brilliant deep blood red, with maroon shadings.

SWEET-SCENTED.

- Dr. Livingston. Leaves finely divided, very fragrant.
 Rose. The most desirable of the scented varieties.

IVY-LEAF.

- Thick, glossy, Ivy-shaped leaves; plants drooping in habit.
 Jeanne d'Arc. White, suffused with lavender.
 Souvenir de Charles Turner. Deep pink, feathered maroon in upper petals.
 Madame Thibaut. Very double; rich deep pink.

BRONZE.

- Leaves show the most beautiful shades of yellow or brownish red, the foliage being as handsome as flowers.
 Black Douglas. Flowers salmon; foliage golden yellow, red zone.
 Magician. Leaf green and yellow, chocolate zone; flowers double, scarlet.

OTAHEITE ORANGE

A dwarf orange, which grows, blooms, and fruits freely in pots, when only a foot or two high. Fruit about one-half the size of ordinary oranges. The blossoms are produced in great abundance, delicate and beautiful in color, and of a delicious perfume. Strong plants, each 15 cents; extra strong plants each 35 cents.

RUBBER PLANT

FICUS ELASTICA

One of the best plants grown for table or house decoration. It succeeds well with ordinary treatment. The glossy green leaves seem especially formed to resist the dust and gas to which plants in dwelling houses are exposed. Strong plants, 50, 75, and \$1.00 each.

GENISTA CANARIENSIS

The flowers are pure golden yellow, and literally cover the plant when full grown. Each 15 cents.

GREVILLEA ROBUSTA, The Silk Oak

A beautiful plant for decorative purposes; quick of growth and of easy culture. The leaves are a light bronze color, the tips being covered with a soft down resembling raw silk. For the house it is unsurpassed, as it needs little attention. Each 10 cents.

JASMINE

Jasminum grandiflorum is the idol of the poets. Foliage fine; flowers white, star-shaped, and very fragrant, blooming from November till May. Easy of culture. Each 15 cents.



RUBBER PLANT



SECTIONAL VIEW OF ONE OF OUR PALM-HOUSES

PALMS

Palms will do well at a window where there is little or no direct sunshine. A regular, but not excessive, supply of water and a fair light are all the plants demand during the cool season. The soil should be a substantial fibery loam. A daily syringing of the leaves is an advantage, but in winter once a week is sufficient. If kept in a living-room with a dry furnace heat, daily syringing or spraying the leaves is advisable. We here offer plants of the handsomest and most reliable species. First size, eighteen to twenty inches high. Second size, eight to twelve inches high. Third size, strong plants from 3-inch pots.

Sent by Mail or Express at these Prices.

Palm, *Areca lutescens*. One of the handsomest Palms; desirable in every stage of growth. An easy plant to manage, and always looks well. Its gracefully recurved and pinnatifid, glossy, green leaves make it a most pleasing object. First size \$1.25; second size 50 cents; third size 25 cents.

Cocos Weddelliana. The most elegant of the smaller Palms. Its slender, erect stem is freely furnished with gracefully arching leaves of a rich green color. Admirable for fern dishes, as they are of slow growth and maintain their beauty a long time. Strong plants, 50 cents.

Kentia Belmoreana. Graceful, arching leaves, with long, terete, shining, yellowish-brown petioles; divisions of the leaves twenty to thirty in number, strap-shaped, and deep green in color. This Palm will stand a great deal of ill usage and maintain a good appearance. First size \$1.25; second size 85 cents; third size 35 cents.

Palm, *Kentia Forsteriana*. The beautiful "Thatch Palm." Similar to *K. Belmoreana*, but the petioles are a brighter green and the leaf divisions narrower, more delicate and graceful. A handsome Palm for table decoration. First size \$1.25; second size 85 cents; third size 35 cents.

Latania Borbonica. Fan-shaped leaves, split into divisions at the apex. A strong, vigorous plant, and makes a fine appearance in the window or in contrast with other plants. First size \$1.25; second size 50 cents; third size 25 cents. Extra large plants, 24 to 30 inches high, \$2.25.

Phoenix reclinata. A handsome, hardy, and rapid growing pinnate-leaved Palm. First size \$1.25; second size 60 cents; third size 30 cents.

Scaphothia elegans. The beautiful "Feather Palm" of Queensland. The pinnate leaves are a lovely soft green and most gracefully arched. First size \$1.00; second size 60 cents; third size 30 cents.

OXALIS

Handsome plants for pot culture, always in bloom, and not requiring any special care.

Oxalis floribunda alba. An ever-blooming variety; leaves three-parted, flowers in clusters, white, half an inch or more in diameter. Each 10 cents.

floribunda rosea. Same as alba, except that the flowers are pink. Each 10 cents.

Ortgiesii, or Golden Star. About 12 inches high; branches freely; dark olive green foliage, under side purple. Flowers in clusters, star-shaped, bright golden yellow, always in bloom. Each 15 cents; two for 25 cents.

CHINESE PRIMROSE

Few house-plants afford better satisfaction. Requires a cool north window. Care should be taken that no water falls on the buds, as it causes them to rot. In summer they can be turned out into a shady border.

Primrose, Single White or Single Pink. Each 15 cents.

PRIMULA

Obconica Grandiflora

Perpetual blooming, bearing large trusses of flowers on long stems well above the foliage; color pale lilac, shading to white. Each 15 cents.

THE ROSE, QUEEN OF FLOWERS

The autumn season, after the first of October, is especially favorable for transplanting the hardy roses. The plants should be dormant; that is, the growth should be finished and the plants have dropped their leaves, or at least the leaves should have been removed from the hard and ripened wood. In this condition there can be no drooping of the plants, and all wounds tend to callous and heal over quickly, and possibly even to make some new roots before cold weather sets in, and the plants are ready to start off into new growth at the earliest opportunity in the spring. In setting the plants remove with a sharp knife any portions of injured roots, leaving a smooth cut surface. Be sure and plant in deep-spaded, mellow, and well-enriched soil, where no water will lie. Early in the spring the tops should be cut back sharply, leaving only some six or eight inches of stem. After planting draw some soil up into a mound around each plant and then cover the ground with a good thickness of stable litter, leaves or evergreen boughs if they can be had.

HYBRID PERPETUAL ROSES

The Hybrid Perpetual class is entirely hardy. The flowers are of large size, and of the most beautiful colors. Through their blooming season they give us a show of brilliant colors unequalled by any other plants. The following are only a few of the Hybrid Perpetual Roses we cultivate, but they form a good collection. Those who leave the selection to us shall have our best efforts to serve them.

TWO-YEAR PLANTS.—The varieties in the following list can be supplied in EXTRA STRONG two-year plants, each 35 cents; \$3.50 per dozen, except where noted.

ONE-YEAR PLANTS—We can supply one-year green plants of all H. P. Roses at 15 cents each, \$1.50 per dozen, excepting Clio, Marchioness of Londonderry, Mrs. R. G. Sharman Crawford, Anna Alexieff, Francois Michelon, and Margaret Dickson.

Rose, Anna Alexieff. Flowers very double and full; freely produced; noted for their clear bright pink color. 40 cents.

Archduchesse d'Autriche. Bright satiny pink.

Anna de Diesbach. Beautiful shade of carmine; fine.

Caroline Marniesse. Pure (or slightly creamy) white, double and sweetly tea-scented. A perpetual bloomer.

Clio. Flesh color, shaded in center with rosy pink; vigorous grower and handsome. Each 50 cents.

Coquette des Blancches. Pure white, sometimes delicately tinged with pink.

Rose, Francois Levet. Large flower of fine form, on straight stiff stems; bright clear rose color; a splendid variety.

Francois Michelon. Deep carmine-rose; very large, full, and of globular form; fragrant, and a free bloomer. A distinct, choice sort; excellent late in June or July, when other varieties are gone. Each 50 cents.

General Jacqueminot. Rich, crimson-scarlet, very bright and velvety; much admired and in great demand.

John Keynes. Dark velvety crimson; large, fine form.

La France. Silvery rose, changing to pink; beautiful both in flower and bud. A constant bloomer.

La Reine. A beautiful, clear, bright rose; full form; very fragrant.

Madame Plantier. Summer bloomer; pure white.

Margaret Dickson. Best white Hybrid Perpetual; has the fragrance of the finest Tea Roses. Each 40 cents.

Magna Charta. Color a beautiful bright pink suffused with carmine.

Mrs. R. G. Sharman Crawford. Color white at base of petals, shading outward to a deep rosy pink, and the outer petals a pale flesh color. Each 50 cents.

Mrs. John Laing. Delicate pink; large; fine form; very fragrant. Flowers continuously in the open ground.

Marchioness of Londonderry. White flowers of great size; perfectly formed. Each 50 cents.

Peonia. Bright clear red; very sweet; one of the finest.

Paul Neyron. Flowers very large, in fact the largest of all Roses; deep rose color; full, fragrant, and a free bloomer.

Prince Camille de Rohan. Rich, dark, velvety crimson, shading to maroon; very double and sweet.

Vick's Caprice. Ground color soft satiny pink, distinctly striped and dashed with white and carmine; beautiful in bud form.

Victor Verdier. Bright rose, crimson center.



NEW HARDY YELLOW ROSE, SOLIEL D'OR

NEW HARDY YELLOW ROSE

SOLEIL D'OR (Golden Sun)

This magnificent variety is perfectly hardy, robust, and vigorous, making a growth of about three feet in height. The buds are conical in shape, and of a lovely hue. The flowers are three and a half inches in diameter, well incurved, and superb in color, varying from gold and orange-yellow to reddish gold, shaded with Nasturtium-red. The plant is perpetual-flowering. Strong 2-year plants, each, \$1.00.

MOSS ROSES

Moss Roses are very popular and much admired for their buds, which are covered with a moss-like texture. Two-year plants, each 35 cents; per dozen \$3.50.

Rose, Comtesse de Murinais. Pale flesh, changing to white.

Henry Martin. Dark red.

Madame de la Rochelambert. Bright pink.

Princess Adelaide. Pink.

HYBRID WICHURAIANA

EVERGREEN SET OF MEMORIAL ROSES

A new and distinct type of Hardy Roses.

They make shoots in one season of from twelve to twenty feet in length completely covering the ground with their bright glossy foliage and showy, fragrant flowers. For covering stumps and trees, walls and trellis, they are unequalled.

Strong young plants, 15 cents each; the set for 50 cts.

Two-year plants, 30 cents each; the set for \$1.00.

Rose, Manda's Triumph.

Flowers large, double, in clusters, pure white and fragrant.

Pink Roamer. Flowers single, a clear pink, and delightfully fragrant.

South Orange Perfection.

Flowers bluish pink, changing to white, double, medium sized; profuse bloomer.

Universal Favorite. A robust grower.

Flowers large, double, fragrant, and of a deep rose color.

WICHURAIANA MEMORIAL ROSE

A Japanese variety which creeps on the earth after the habit of Ivy. The flowers grow in profusion in clusters at the ends of the branches. Flowers pure white, with yellow stamens, and very fragrant. Valuable for use in cemeteries and covering rockeries, etc. Hardy. Each 15 cents; per dozen \$1.50. Two-year plants, each 30 cents; per dozen \$3.00.

BEST HARDY EVERBLOOMING ROSE

KAISERIN AUGUSTA VICTORIA

Pearly white, softly tinted with lemon in center; fragrant. A strong, healthy grower, with bold, beautiful foliage. Particularly hardy, and one of the most beautiful Roses in cultivation. Strong 2-year plants, 40 cents; per dozen, \$4.00.

THE BEAUTIFUL RAMBLER ROSES

The Ramblers are so well known that it is unnecessary to devote space to a long description of these wonderfully beautiful and useful hardy climbers. They are suitable for training on walls, verandas, trellises, arbors, and pillars, and as specimen pot plants for winter forcing. Flowers are well formed and though small are produced in so great profusion as to produce an immense mass of bloom. The Crimson is the best color and most satisfactory. When in bloom the plants are literally covered with thousands of brilliant crimson flowers.

Pink. Yellow. White. Crimson.

Two-year plants 30 cents; set of four for \$1.00.

CLIMBING ROSES

Are perfectly hardy; bloom early in summer, and when in a rich soil soon cover any arbor or porch. Two-year plants, each 35 cents; set for 60 cents.

Rose, Baltimore Belle. Pale blush, nearly white.

Queen of the Prairie. Rosy red; fine.

It may be well to give the caution that Climbing Roses do not require the close annual pruning that the Hybrid Perpetuals need, nor will they submit to it and produce flowers. The long shoots or canes of the climbers bear short side branches on which the flowers are borne, and the plants are capable of bearing great numbers of flowers annually; these side growths are therefore to be encouraged. Cut out all old canes and cut back the side shoots for renewal.

POLYANTHA ROSES

Plants each 10 cents; \$1.00 per dozen.

Madame Cecil Brunner. Color salmon, rose on a yellow ground.

Etoile de Mai. Blooms in clusters; full; nankeen-yellow changing to pale

yellow. Free-flowering.

Mignonette. Rose, changing to blush; clusters large.

Princess Marie Adelaide. Large clusters of small double flowers; bright pink.

White Souper. Pure white, full and double flowers.



HARDY ROSE, LA FRANCE

Photograph reduced

MONTHLY ROSES

The ever-blooming class comprises the Teas, Chinas, Noisettes, and Bourbons. These have free-blooming qualities, exquisite fragrance, and delicate colors. They are well adapted to house-culture. The varieties offered are among the best in cultivation; they have been carefully grown in pots during the summer, and are in excellent condition for winter flowering. Shower the plants frequently, or sponge the leaves to keep them clear of the red spider, their worst enemy in the house. Fine strong plants, each 10 cents; \$1.00 per dozen. Italic letters indicate classes: *z*, Tea; *c*, China.

Rose, Aurora. Bright pink. *z*.

Bon Silene. Carmine, tinted with salmon. *z*.

Bridesmaid. Clear delicate pink. *z*.

Catharine Mermet. Flesh color; buds finely formed. *z*.

Charles Rovelli. Carmine, changing to silver-rose. *z*.

Coquette de Lyon. Canary-yellow. *z*.

Francisca Kruger. Coppery yellow, peach shaded. *z*.

Gen. de Tartas. Carmine, shaded purple. *z*.

Jules Finger. Bright rosy scarlet and intense crimson. *z*.

La Princess Vera. Color, flesh; coppery rose border. *z*.

Madame Camille. Soft rosy pink. *z*.

Rose, Maman Cochet. Deep rosy pink, inner side of petals silvery rose. *z*.

Marie Guillot. White, tinged with pale yellow. *z*.

Marechal Niel. Yellow, tea-scented. *z*.

Princess de Sagan. The richest crimson of any Rose in our collection. *z*.

Perle des Jardins. Rich shade of yellow; perfect form. *z*.

Queen's Scarlet. Crimson-scarlet, beautiful buds. *c*.

White Maman Cochet. Flower extremely large, round and full; a pure white. *z*.

Hardy Plants for Fall Planting



AQUILEGIA

Aquilegia chrysantha. The beautiful golden yellow Columbine. Each 15 cents.

Cœrulea. This is the true form of Rocky-Mountain Columbine. Flowers blue. Each 15 cents.

VICK'S DOUBLE ANEMONE WHIRLWIND

Planted outdoors this fall it will bloom the following season.

The double variety "Whirlwind" has all the free-blooming and other good qualities of the single white, and the additional ones of greater hardiness of plants and more lasting blooms. Each 20 cents; two for 30 cents.

SINGLE ANEMONE. One of the best hardy autumn-flowering plants we have.

Japonica alba. Pure white. Each 20 cents.

Rubra. Deep rose color. Each 20 cents.

ACHILLEA

Achillea, The Pearl. The blooms are of purest white, and so large that they resemble a Pompon Chrysanthemum. Hardy, and will thrive in almost any situation.

Very desirable for the garden or cemetery; blooms nearly the whole season. Each 15 cents; three for 40 cents.

Millifolium roseum. Foliage finely cut; flowers pink. A continuous bloomer. Each 15 cents; two for 25 cents.

ARABIS ALPINA

A very early spring-flowering plant. Flowers pure white. Each 15 cents.

BLUE SPIRAEA

Caryopteris mastacanthus. A handsome free-growing plant, with numerous small blue or lavender flowers clustered around the branch just above each pair of leaves. An excellent bee-plant. Each 15 cents; two for 25 cents.

CLEMATIS DAVIDIANA

A vigorous, hardy plant, two to four feet high, with handsome foliage. The flowers are bell shaped, deep lavender or violet in color, very fragrant, and are produced in clusters in great profusion. One of the most desirable of hardy herbaceous perennials. Strong plants, each 25 cents; two for 40 cents.

COREOPSIS LANCEOLATA

Flowers large, bright golden yellow, and produced in the greatest profusion the entire summer; invaluable for cutting. Each 15 cents.

HARDY POMPON

CHRYSANTHEMUMS

These are the very best of all Chrysanthemums for planting out of doors, and also very desirable for growing as pot plants, being dwarf, compact growers, and free bloomers. They are perfectly hardy, blooming before severe frosts will hurt the flowers.

Chrysanthemum, Ada. Deep clear yellow, small, but a pretty and interesting flower.

Amelia. Blush-pink.

Crimson Ball. Beautiful deep crimson.

Delicatissima. Center deep wine color, outer petals delicate pink.

Edna. White, with pink shadings and yellow center; good size and nice form.

Golden Fleece. Rich golden yellow.

May Williamson. Blush, changing to pure white.

Oneita. Bright clear yellow; good size and well-formed flower; very showy.

Pink Beauty. Fine soft pink.

President. Dark violet-rose.

Princess Louise. Very dark pink.

Santiago. Deep bronze-red.

Each 10 cents. The set of 12 for \$1.00.

BAPTISIA AUSTRALIS. Spikes of dark blue flowers. Each 25 cents.

BOLTONIA ASTEROIDES. Attains a height of four feet; flowers like single Asters; blooms during summer and autumn. Produces hundreds of flowers at one time. Each 15 cents; dozen, \$1.50.

CAMPANULA PERSICIFOLIA. Exceedingly free flowering and grand for cutting. In two colors, blue and white. Each 15 cents.



POMPON CHRYSANTHEMUM, SANTIAGO

SHASTA DAISY

The Shasta Daisy is one of the most marvelous productions in the flower line that has ever been brought to the notice of floriculturists. It is the first of a new type, which has been obtained by hybridization and rigid selection through a series of years. Its first qualification is extreme hardiness. Second, it is perennial, blooming better and more abundantly each season. Third, it can be multiplied rapidly by simple division, and it is not particular as to soil. Fourth, it blooms for several months. Fifth, the flowers are extremely large and graceful, averaging about four inches in diameter, with petals of the purest glistening whiteness, and are borne on single, long, stiff, wiry stems. Sixth, the blooms when cut remain perfectly fresh and in good condition for two weeks or more. No other flower can compare with it in usefulness. Each 50 cents; per dozen, \$5.00.



SHASTA DAISY
One inch less than full diameter

DELPHINIUM

Delphiniums or Larkspurs are valuable plants. Formosum is a most brilliant dark blue, the finest blue flower known among our hardy plants.

Delphinium formosum. Dark blue. Each 15 cents.

Bee Larkspur. Interesting for the manner in which the petals are folded up in the center of each flower, so as to resemble a bee. Flowers of lighter shade than Delphinium formosum. Each 15 cents.

DICENTRA

Dicentra spectabilis, or Bleeding Heart. Bears heart-shaped, deep pink flowers in a graceful drooping raceme a foot or more in length. Each 25 cents.

DICTAMNUS FRAXINELLA

NATURAL GAS PLANT

A very showy border perennial, forming a bush about two feet in height, having fragrant foliage, and spikes of curious flowers, giving off during hot weather a fragrant volatile oil which under some conditions may be lighted when a match is applied to it. Two colors, White and Red. Plants, each 25 cents; three for 60 cents.

EULALIA

Eulalia Japonica variegata. This variety, except that the variegation of the leaf is lengthwise, is very similar in style and habit of growth to *E. Japonica zebrina*, and it forms so beautiful and striking a contrast to that variety as to make them desirable companion plants.

Japonica zebrina. This plant is unlike most variegated plants, as its stripe or marking is across the leaf instead of lengthwise. In fall it bears large tassel-like plumes.

Gracillima univittata. The most beautiful of all the Eulalias. Foliage narrow, dark green, with a silvery white midrib.

Each 15 cents; one plant of each of above three for 40 cents.

DIGITALIS (Foxglove). A highly ornamental plant of stately growth. Each 15 cents.

EUPHORBIA COROLLATA. Blossoms from July to October, flowers white, small and star-shaped. Useful for bouquets. Each 15 cents; two for 25 cents.

ERIANTHUS RAVENNÆ. Resembles the Pampas Grass; producing beautiful plumes from ten to twelve inches in length on stalks from five to seven feet high. Each 15 cts.

FRAGARIA INDICA, or Indian Strawberry. Not edible but a pretty and attractive hardy plant. Each 15 cents.

GAILLARDIA GRANDIFLORA. Among the most attractive and effective of our hardy perennial plants; one mass of bloom from June till autumn. Each 15 cents.

GYPSOPHILA PANICULATA. Gypsophilas are valuable for bouquet making, either green or dried. They are very graceful and easily cultivated. Should be in every garden. Flowers white. Each 15 cents.

GOLD FLOWER

Hypericum Moserianum. Of a low, spreading, branching growth, with handsome leaves, the upper side much darker than the lower. As a pot plant it is very handsome with its clean, dark foliage as a background for the flowers—great, showy, yellow disks, as brilliant in their reflection as burnished gold. The plant should be given a place in a well-drained border, and receive good care. On the approach of winter give it a covering of leaves to conserve its vigor, that it may make a strong growth at the start in spring. Extra strong plants, 25 cents; two for 40 cents.

HELIANTHUS

HARDY SUNFLOWERS

These varieties of Helianthus are perfectly hardy in this locality, but in colder regions a protection of coarse litter will be required. The plants attain a height of about four feet, and in their blooming season, in August and September, they are nearly covered with bright golden yellow double flowers, about the size of a Dahlia; they are very desirable for cutting. Each 15 cents; dozen, \$1.50.

Helianthus lateifrons. Plant of distinct habit, forming a pyramid of lovely flowers and foliage. Flowers golden yellow, single.

Maximilliana. Grows from five to seven feet high; flowers produced in long graceful sprays of golden yellow.

Multiflorus plenus. Yellow flowers, perfectly formed.

Soliel d'Or. The Golden Quilled Sunflower; similar to the above variety, except that the petals are quilled like some of our finest Dahlias.

HELIOPSIS PITCHERIANA

A hardy perennial, three feet high, broad and bushy, and a perpetual bloomer. Flowers deep golden yellow, two inches across. Very fine for cutting. Each 15 cents; two for 25 cents.

HEUCHERA SANGUINEA

The flowers are produced in the greatest profusion from June to August. In color it varies from coral-red to crimson. Height 18 inches. Each 20 cents; per dozen, \$2.00.

GEUM ATROSANGUINEUM. Produces a mass of scarlet flowers during the summer and fall months. Each 15 cents.

HIBISCUS

Each 20 cents; two for 35 cents.

Hibiscus, Crimson Eye. A robust grower with dark red stems and handsome foliage. The flowers are immense in size, often measuring twenty inches in circumference. The color is pure white, with a velvety crimson center in each flower.

Large-Flowering. Perfectly hardy in any place, and is one of the most beautiful hardy flowering plants we have. The color is a deep pink.

HOLLYHOCK—Double

We have excellent healthy plants, grown from seed, that will flower the first summer, and usually for three or four summers after. Give the plants a light covering of coarse litter for winter protection. The colors are nicely assorted, so that almost every color from white to purple may be expected. Each 15 cents; the set of six colors for 75 cents.

PERENNIAL PHLOX

One of the best of the hardy flowering plants. A show of brilliant flowers can be had from June until November. The varieties listed are all large-flowering. If you want something extra fine, plant generously of Perennial Phlox. Strong field-grown plants, each 20 cents; dozen, \$2.00.

Phlox, Cross of Honor. White, striped with lilac.

Countess de Castries. White, rose eye.

Esclamonde. Rosy lilac, shaded white; large purple center surrounded with white halo.

Edgar Quinet. Rosy amaranth.

Eclairer. Carmine, salmon center, with rosy white star.

Isabey. Orange-salmon, center purplish crimson.

Jourdan. Purplish crimson.

Little Blush. Pure white, changing to delicate pink.

Mt. Blanc. Pure white; dwarf.

M'le. Cuppenheim. Pure white; late.

M. Bezanson. Fiery crimson, velvety purple eye.

Nettie Stewart. Pure white, faintly tinged pink at base of petals.

Premier Ministre. Rosy white, center deep rose.

Richard Wallace. Pure white with distinct violet eye.

Teddy. Rosy white, with carmine eye; tips of petals sometimes striped crimson.

IBERIS SEMPERVIRENS

Evergreen Candytuft. Produces innumerable flat heads of pure white flowers during April and May. Each 15 cents; per dozen, \$1.50.

LYCHNIS

Lychnis Chalcedonica. Produces large heads of brilliant scarlet flowers. A gem for cut flowers. Each 15 cents; per dozen, \$1.50.

Viscaria splendens. A strong, vigorous grower, with almost evergreen foliage. Blooms early in June and continues for six weeks or more. Flowers bright crimson. Without doubt the finest red-flowered hardy perennial. Each 15 cents.

PARDANTHUS SINENSIS SPLENDENS

Blackberry Lily. Lily-like flowers of bright orange, followed by seeds that resemble Blackberries. Each 10 cents.

PAPAVER—Poppy

Papaver orientale. The well known Oriental Poppy. Flowers scarlet. Each 20 cents.

Nudicaule. The Iceland Poppy. Always in bloom, flowers white, orange, and yellow. Each 20 cents.

PHLOX SUBULATA

Each 15 cents; per dozen, \$1.50.

Moss Rose. A low-growing plant, fine for planting around rockwork. Very showy in early spring with its clouds of beautiful pink flowers.

Phlox, The Bride. Pure white, with pink eye.

PINKS

Each 15 cents; per dozen, \$1.50.

Pink, Her Majesty. Flowers large, fringed, very double and pure white. The fragrance is deliciously clove-scented, and not too powerful. Long stiff stems support the flowers. Her Majesty is a rival of the Carnation.

Souvenir de Sale. Flowers a delicate soft rosy pink, being fully as large as a Carnation; beautifully formed, very double, and exceedingly useful for cutting.

PLATYCODON GRANDIFLORUM

The Chinese Bell Flower. In bloom the entire season. The flower resembles the Clematis in size and color. Two varieties, blue and white. Each 15 cents.

GIANT HARDY PRIMROSE**Primula veris superba**

This beautiful new Primula originated in a bed of seedling Polyanthus, and is probably a hybrid Primrose, having somewhat the habit of a Polyanthus and the pale yellow color and the fragrance of the English Primrose. It differs from the ordinary forms of Polyanthus in throwing up several trusses from the same root, and the corolla being flatter. The trusses of bloom are six inches in diameter, and the individual flowers over an inch across, being very much larger than those of other hardy Primroses. The plant is ten to twelve inches in height, is perfectly hardy, and flowers earlier and continues in bloom longer than any other Primula. Each 15 cents; \$1.50 per dozen.

LYSIMACHIA CLETHROIDES. A fine hardy plant, growing about two feet high, with long, dense, recurved spikes of pure white flowers. Each 15 cts.; dozen, \$1.50.

LYTHRUM ROSEUM SUPERBUM. A strong-growing shrub-like plant, producing large spikes of rose-colored flowers from July to September. Each 15 cents; per dozen, \$1.50.

MONARDA DIDYMA. Bright red, showy flowers. Fine for planting among bulbs or in a mixed border. Each 15 cents; two for 25 cents.

PERENNIAL PEA. Flowers pink, in clusters, hardy. Each 15 cts.; two for 25 cts.



PERENNIAL PHLOX

CHINESE PEONIES

The Chinese Peonies are desirable on account of their large size, fine colors, and profuse blooming. They are perfectly hardy, and will succeed on any ground unless so wet that the water will lie on the surface in the winter and spring. May be planted either in the autumn or spring. Extra fine roots, Each 25 cents; dozen, \$2.50, except as noted.

- Peony, Active.** Rose, flowers large, very compact.
Brujei. Light rose, fine.
Double White. Each 35 cents.
Dr. Bretonneau. Rose.
Dugnesline. Rose, very fine.
Elegantissima. Outer petals rose, center cream and rose.
Fragrans. One of the best pink varieties.
Fulgida. Crimson, large flower. Each 35 cents.
Lamartine. Very dark crimson. Each 35 cents.
Limbata. Rose, large, fine.
Madame Morren. Outer petals blush, center salmon.
Nivalet. Rose, large and full.
Officialis rubra. Rich deep crimson, very early, and one of the brightest of the dark-colored varieties. Each 35 cts.
Plenissima rosea superba. Deep rose, tinged salmon.
Purple Crown. Purple and crimson. Each 35 cents.
Rosa mutabilis. Rose and pink shaded.
Striata speciosa. Pale rose, center nearly white.
Tenuifolia flore-pleno. Foliage graceful and slender, making a fine contrast when arranged with the double dark crimson flowers, that nearly rival the rose in delicate perfume, perfection of bloom, and brilliancy of color. Blooms earlier than other varieties. Each 50 cents; two for 90 cents.
Triomphe du Nord. Violet and rose, large and fine.
Variegata plenissima. Rose and pink shaded.

RUDBECKIA, GOLDEN GLOW

- Rudbeckia laciniata flore-pleno.** A beautiful hardy perennial, attaining a height of eight feet, blooming from July to September. Flowers double, deep golden yellow, and borne on long stems, making it suitable for cutting. One of the most effective decorative plants for garden or lawn. It is covered with a mass of flowers all summer. Each 15 cents; two for 25 cents; per dozen, \$1.25.
Newmani. Single, golden yellow, with black center; grows about eighteen inches high. Each 20 cents.



CHINESE PEONIES

HERBACEOUS SPIRÆAS

- Spiræa palmata elegans.** A beautiful, hardy, free-flowering plant, with sweet-scented white flowers and red anthers; a very pleasing and useful plant for cut flowers and excellent for hardy herbaceous borders. Each 15 cents.
Venusta. A showy red-flowering species; very fragrant. Each 20 cents; dozen \$2.00.

VIOLETS

- Flower freely in the early spring. Set plants in spring or autumn. Bloom well in the house if not too hot and dry. Each 15 cents; per dozen, \$1.50.
Violet, Marie Louise. Double, light blue, profuse bloomer in early spring and late fall; easy to force in winter.
English Blue. Perfectly hardy, double, a fine deep blue, and exquisitely fragrant.

California. Strong, vigorous grower, entirely healthy; flowers large size; very prolific; color clear violet-purple, which does not fade; intensely fragrant; single.

YUCCA

Yucca filamentosa. Erect plants with sharp-pointed leaves; will endure the winter in most parts of the country; sends up a strong stem bearing large, white, bell-shaped flowers. Strong one-year-old roots, 20 cents; strong two-year-old roots, 30 cents.

POTENTILLA ATROSANGUINEA. The flowers are of a velvety crimson, and are produced in great abundance the entire season. Each 15 cents.

PENTSTEMON BARBATUS TORREYI. Most useful hardy perennial, blooming from June until autumn, with panicles of brilliant scarlet flowers. Very fine. Each 15 cents; dozen, \$1.50.



PRIMULA VERIS SUPERBA

HARDY FLOWERING SHRUBS



XANTHOCERAS SORBIFOLIA

Hyacinth Tree.

A valuable hardy shrub. If better known would be in every garden. From five to eight feet in height. Blooms early in spring. Flowers bell-shaped, one inch broad, in clusters about eight inches long, resembling those of the Horse Chestnut as well as those of the Hyacinth, completely covering the plant. Petals crumpled, white, marked with yellow, changing to purple at the base. Foliage light green. Each 50 cents.

HARDY AZALEAS

As the shrubs are too large to send by mail, we offer them here by express. Each, \$1.00; dozen, \$10.00.

Azalea Pontica (Ghent Azalea). Entirely hardy. Our collection contains the finest varieties grown, and cannot be surpassed for the varied richness of their colors.

Azalea mollis. One of our most gorgeous flowering shrubs. The very large and beautiful flowers of various colors are borne in clusters before the leaves appear in May.

CALYCANTHUS FLORIDUS

Sweet-Scented Shrub. Carolina All-spice. One of the most interesting and desirable of the medium-sized shrubs; height six to eight feet; handsome foliage; leaves and young wood aromatic; flowers one inch in diameter, color dark purple or chocolate. Strong plants; each 25 cents.

CLETHRA ALNIFOLIA

Sweet Pepper Bush. A dense-growing bush, with dark foliage and showy upright spikes of creamy white fragrant flowers in August. Each 25 cents.

ELEAGNUS LONGIPES

A hardy, vigorous-growing shrub, with handsome foliage. Flowers bright yellow. Fruit oblong, bright red, covered with small white spots, and is juicy and edible; it has a sharp, pleasant flavor. Each 25 cents.

SYRINGA

Syringa grandiflora. Flowers pure white, fragrant.
Golden. One of the most handsome golden-leaved shrubs.
Microphylla. A very pretty dwarf variety, handsome and symmetrical form; flowers pure white.
 Each 25 cents, or set of three for 60 cents.

HYDRANGEA

Hydrangea paniculata grandiflora. Hardy as a Lilac. A medium-sized hard-wooded shrub, bearing immense clusters of white flowers, remaining in bloom a long time. Plants according to size, 25 cts and 40 cts each.

DEUTZIA

We can highly recommend the Deutzias for hardiness, good habit, great profusion of flowers, and in every respect as being among the most desirable hardy shrubs. Strong plants, each 20 cents. The collection of four plants 60 cts.

Deutzia gracilis. Flowers white, single.

Crenata flore-pleno. Flowers double, white.

Double White. Pure white.

Pride of Rochester. Flowers pure white, large and double, reverse of petals delicate rose; very handsome.

FOUR NEW DEUTZIAS.

Each 50 cents; or the set of four for \$1.75.

Gracilis campanulata. Produces long panicles of large white flowers, resembling the Campanula.

Gracilis rosea. Flowers bell-shaped, ashly rose, clear rose in center.

Venusta. Of bushy growth, producing large flowers, resembling small white Azaleas.

Discolor grandiflora. Large flowers, well opened; color white, with light rose tint; buds rose.

DEUTZIA LEMOINEI

The finest hardy shrub offered in many years. Large pure-white flowers, produced in broad-based, cone-shaped heads, of from 20 to 30 flowers each. A valuable plant for the garden; also does well as a window plant. Strong plants each 25 cents; two for 40 cents; \$2.00 per dozen.

EXOCHORDA GRANDIFLORA

Pearl Bush. A vigorous bush. Flowers white, in slender, graceful racemes; useful for cut flowers. Ea. 25c

KERRIA JAPONICA

Japan Globe Flower. A graceful dwarf shrub, bearing double yellow flowers the entire season. Each 25 cts.

LILAC

Lilac, Purple. The old purple variety. Each 20 cents.

White. The old white variety. Each 20 cents.

PURPLE FRINGE (Smoke Tree)

A spreading shrub, completely covered in summer with large, feathery, purplish panicles, having the appearance of clouds of smoke. Each 25 cents.

SNOWBALL—VIBURNUM

Japanese Snowball—Viburnum plicatum. Of lower and more compact growth than the old Snowball. The flowers are somewhat larger and of purer white; remain longer in good condition. Each 25 cents.

Viburnum Opulus sterilis. The well-known Snowball, produces large clusters of snow-white flowers in May. Each 20 cents.

SPIRÆA

The Spiræas are in the front rank among flowering shrubs for the lawn or garden. Beginning to bloom in May, they produce flowers abundantly through the summer.

Spiræa arguta. Dwarf. Flowers clear white, and freely produced. The best very early-flowering white Spiræa. Each 30 cents.

Anthony Waterer. Dwarf; constant bloomer. 25 cents.

Billardi. Flowers rose-colored, in terminal spike-like panicles, produced nearly all summer. Each 20 cents.

Billardi alba. Similar to Billardi; flowers white. Each 20 cents.

Bumalda. Half-Dwarf. Flowers deep rose. Each 20 cents.

Douglasi. Four to five feet high. Flowers rose-colored. Each 20 cents.

Prunifolia flore-pleno. Double plum-leaved Spiræa. The popular variety commonly called Bridal Wreath. Foliage in autumn turns to a fine bronze. Each 20 cents.

Van Houttei. A vigorous plant that sends up numerous tall, slender shoots, which curve gracefully, and the last of May or in June are literally covered with pure white flowers, making the bush a mass of bloom. Each 20 cents.

FORSYTHIA SUSPENSATA (Fortunei)

Golden Bells. One of the earliest spring-flowering shrubs, producing large, bright yellow flowers. Each 20 cents.

Hardy Climbing Plants

C LIMBERS are nature's drapery, and nothing produced by art can equal their grace. The hardy varieties are very valuable, for once planted they remain, getting larger and better every year. Train the plants to grow where wanted. Fertilize and cultivate them well if rapid growth is desired, for they enjoy being petted.

AMPELOPSIS

These hardy plants will grow in any location, and very rapidly. Each 20 cents; per dozen \$1.50.

Ampelopsis Veitchii.

Clings very firmly to the side of a house or wall, and will soon form a perfect mass of foliage. Also known as Japan and Boston Ivy.

Quinquefolia, or *Virginia Creeper*. Sometimes called American Ivy and Woodbine; a very rapid grower, the leaves turning crimson in autumn. This is a native plant, and the hardiest, and most rapid climber we have.

AKEBIA QUINATA

A Japanese hardy climbing plant; handsome compound leaves with five leaflets; purplish flowers and purplish mottled berries; an interesting plant. Each 25 cents.

BIGNONA (*Tecoma*)

Bignonia radicans or *Trumpet Vine*. A hardy, strong-growing climber, with large trumpet-shaped, orange-scarlet flowers; very handsome. Each 15 cents.

CHINESE

MATRIMONY VINE

A vigorous, hardy climber. Flowers bright purple, succeeded by scarlet berries nearly an inch long. Each 20 cents; two for 35 cents.

WISTARIA

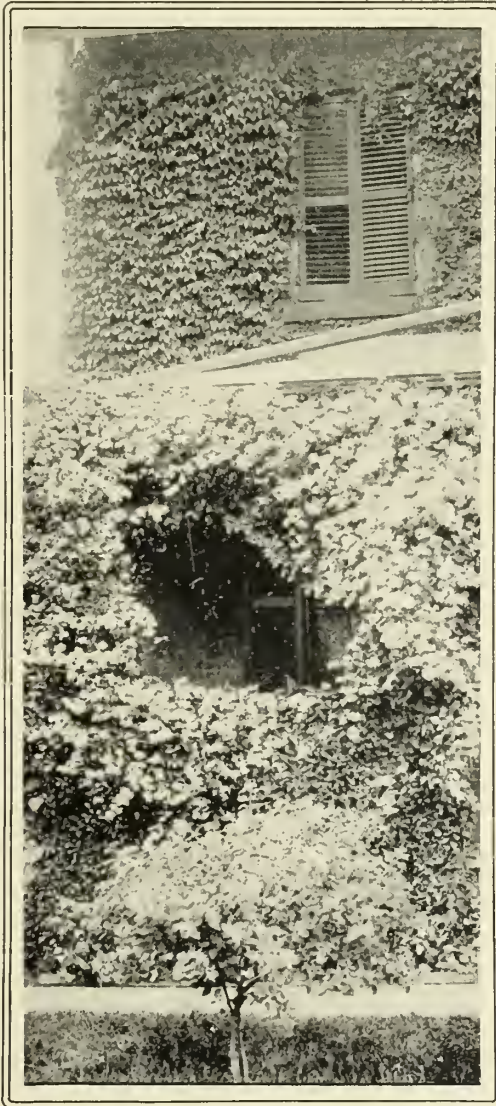
A strong and rapid grower, desirable for trellises, porches, etc. Flowers light purple, showy, and produced in long racemes. Each 25 cents.

HONEYSUCKLE

One of the most desirable hardy climbers. The plants grow with great freedom in any good garden soil, and commence to bloom the second year from planting. Each 20 cents; one of each, 30 cents.

Honeysuckle, Hall's. Flowers pure white, changing to yellow.

Japan Golden-veined. Foliage small, netted with yellow; flowers white.



CLEMATIS PANICULATA AND AMPELOPSIS VEITCHII

CLEMATIS

The Clematis makes a rapid growth, and produces its beautiful showy flowers in the greatest profusion. For pillars, trellises, bedding in masses, or planting about rock-work, it cannot be excelled. In the fall give the plants a good top-dressing of well-rotted manure.

Clematis paniculata. A

hardy and remarkably handsome climbing plant. The freedom of bloom is quite unparalleled, for when the plant is in full flower the greater part of the foliage is entirely hidden from view. Flowers pure white, star-shaped, about one inch in diameter, and borne in large clusters on stiff stems from four to six inches long, that rise from the axils of the leaves; they will last several days as cut flowers, retaining their freshness, and their fragrance is very agreeable. The plant is a strong, quick grower, with broad, healthy foliage, which is seldom attacked by insects. Each 25 cents; two for 40 cents.

Flammula. European Sweet Clematis; flowers small, white, very fragrant. Each 35 cents.

LARGE-FLOWERING VARIETIES

Jackmanni. Large, intense violet-purple flowers, from four to six inches in diameter. Each 35 cents.

Henryi. White, very fine. Each 50 cents.

Madame Edouard Andre Fine bright crimson, free from any purplish shading. Each 50 cents.

Ramona. Single flowers, color light lavender; size of *Jackmanni*. Each 50c.

DUTCHMAN'S PIPE

Aristolochia Siphon Is a floral curiosity; a rapid-growing, hardy climber, attaining a height of thirty or more feet; leaves ten inches across; curious pipe-shaped yellowish brown flowers an inch and a half long. Strong three-year-old plants, each 60 cents.

Small Fruits for the Home Garden.



STRAWBERRY, SEAFORD
STRAWBERRIES

For field-culture plant in rows four feet apart, with the plants one foot apart in the row. For garden-culture plant three feet by one foot. Should the ground not be prepared for planting on receipt of the plants, they should be heeled in, in a cool, moist, shady place. Do not sprinkle the foliage, as it causes a moisture to collect which is very injurious to the crowns, causing them to rot. In setting the plants, be careful to have the crowns even or a little above the surface of the ground, and to have the trench or hole in which the plant is set deep enough to allow the roots their full length. Some varieties of Strawberries have pistillate or imperfect flowers. These must have perfect-flowered varieties planted every 15 or 20 feet among them, or they will produce imperfect fruit. The pistillate varieties are marked (P).

Dozen, 30 cents; 100, 75 cents; 1000, \$5.00, except where noted.

Armstrong. This is the largest and most productive berry grown. We have seen several crates of them, with 10 to 12 berries to a quart box. They sold on the market for 10 to 15 cents per quart, while other berries sold for four to six cents per quart. It is a perfect-blossom variety. Season from medium to late.

Echo. We consider this variety superior in both flavor and sweetness, and while it is not a good shipping berry, for the home garden it should be planted in preference to all others. Fruit brilliant red, of medium size, second early. Plants very productive, and continue to bear late in the season.

Gandy. The best late Strawberry in market, and a general favorite with fruit growers everywhere. The berries are large and uniform in size, of a rich crimson color, and quite firm. Plant a vigorous grower and good cropper. Late to very late.

Glen Mary. (P). Another new variety of vigorous growth, large size, and good quality; color dark scarlet, flesh light red. For home use and near-by market it is a very promising variety.

Hunn. Remarkable for its extreme lateness, ripening considerably later than Gandy and Michigan. Fruit large, dark crimson and attractive, of uniform size and shape, exceedingly firm, and of excellent quality. A splendid shipper. For the home garden it will prove one of the best. Its superior quality commends it for the table, and its solid flesh makes it unsurpassed for canning.

Rough Rider. Originated in Oswego County, N. Y. Enormously productive, hardy and free from disease. Berries very large, roundish, but elongated. Color dark red, like Gandy. One of the latest and firmest Strawberries in existence. Has sold in New York and Boston at nearly double the price obtained for most other varieties.

LAST fall we made our first offer of Small Fruits in collections. That our efforts to give our customers both quantity and quality at prices within the reach of all were appreciated was amply shown by the large number of orders received.

If you have never eaten fruit gathered fresh from the garden, you don't know what you have missed. To have a bed of Strawberries, Raspberries or Blackberries, all that is necessary is a little labor in preparing the beds and setting the plants. Our prices are so low that the cost of the plants is almost nothing when compared with the value of the product and the pleasure of having a supply of delicious fruit always at command. \$4.00 will buy and deliver at your door a collection of Strawberries, Raspberries, Blackberries, Currants, Gooseberries and Grapes—in all 114 strong plants—more than enough for an ordinary family.

Our Small Fruits are strictly true to name, and are strong, well-grown plants.

Rochester. A new variety originated in this locality. Probably a seedling of the Wilson or Wilson's Albany, and having all the good qualities of that old and favorite variety that are so desirable for both shipping and canning. The plants are possessed of great vigor and are remarkably prolific. The fruit is quite similar in size and general appearance to the Wilson—not a large berry, but of good form, bright color, and quite firm. For a canning variety of moderate size it is as near perfect as any variety may be hoped for, and its great productiveness makes it very profitable.

Sample is a fine berry of very large size, long in bearing, solid and good. It is quite late to ripen, large to very large in size, crimson color clear through to the core; colors all over at once; very firm for a large berry; strong, vigorous, and healthy foliage. There is not a weak spot in it. Needs no petting.

Seaford. (P). Fully equal to Bubach in size; far more productive, firm enough to meet all requirements; color deep, glossy red, and quality fit for a king. The plant is as large as Bubach and a much more vigorous grower, while it ripens its crop much faster and several days earlier, and therefore, commands a higher price.

OTHER STANDARD VARIETIES.

| | | |
|----------------------|------------------------|-------------------|
| Bubach, | Greenville (P). | Palmer, |
| Clyde, | McKinley, | Ridgeway, |
| Crescent (P). | Nick Ohmer, | Sharpless. |

and many other popular sorts.

At dozen prices we prepay postage; at hundred rates add 25 cents per hundred for mailing, if wished by mail, otherwise we will ship by express at expense of purchaser.

Pot-Grown Strawberry Plants

SAVE A YEAR'S TIME.

Plants grown in rich soil in pots, and watered frequently, are superior to the ordinary field-grown or layered plants commonly offered, the roots and crowns being stronger and more vigorous. When set, there is no check to the growth, and

You gain a year, for they will bear fruit the First Season,

while field-grown plants will not bear until the second year. We have grown in pots seven of the leading varieties, and our plants are extra large and fine. The list:

| | | |
|-------------------|-------------------|---------------------|
| Armstrong, | Glen Mary, | Rough Rider, |
| Echo, | Hunn, | Sample, |
| Gandy, | Rochester, | Seaford. |

Price—75 cents per dozen, express paid; \$3.00 per hundred, purchaser to pay express charges.

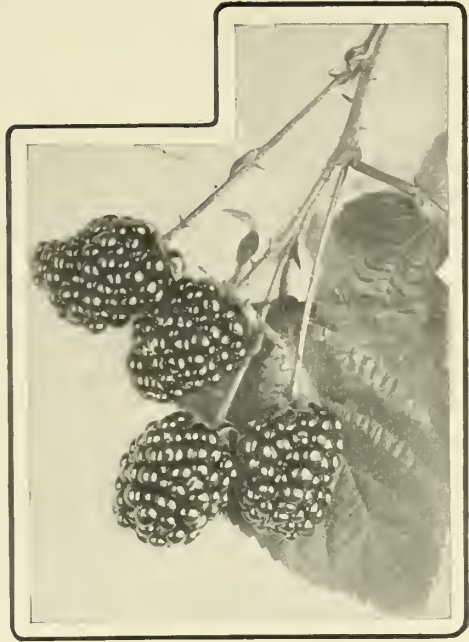
BLACKBERRIES

For field culture, plant in rows six feet apart and plants three feet apart in the row. For garden culture, five by four feet.

Dozen 60 cents; 100, \$2.00; 1000, \$12.00, except where noted. At the dozen price we prepay mail or express charges; 100 and 1000 lots by freight or express, charges not prepaid. Not less than 50 at 100 rate.

THE RATHBUN BLACKBERRY

Since we introduced this wonderfully prolific and monster berry, it has acquired an enviable reputation. It is by far the largest Blackberry in cultivation. In quality it surpasses the luscious Dewberry, being without the hard core common to Blackberries; in fact it melts in the mouth. It is the most desirable variety either for table use or for canning. The plant is hardy, vigorous, and a great bearer. Another strong point in its favor is its habit of rooting from the tips, like Blackcaps. It brings more in the market; fruit holds to large size throughout the season; and as a shipper it is unsurpassed. The price is so low that all should try at least a few of the best Blackberry.



THE RATHBUN BLACKBERRY

Each 10 cents; dozen \$1.00; hundred \$4.00; thousand \$15.00.

Blackberry, Agawam. Hardy and very prolific; fruit sweet and soft to the center. Early and reliable sort.

Erie. Fruit roundish, uniform in size, excellent quality, handsome. A valuable variety for home use or market.

Kittatinny. Tender in northern localities, and for this cause alone hardier sorts have replaced it. South of New York it is uniformly hardy, and in that region it is highly esteemed. Strong grower, very productive. Berries large, handsome, and of best quality.

Lucretia. One of the low-growing, trailing Blackberries; in size and quality it equals any of the tall-growing sorts. The plant is perfectly hardy, healthy, and remarkably productive, with large, showy flowers. The fruit, which ripens early, is often one and one-half inches long, by one inch in diameter, soft, sweet and luscious throughout, with no hard core; ripe before last Raspberries are gone. Should be mulched to keep berries from the ground.

Minnewaski. Vigorous, quite hardy in this region, very productive; large, jet black, shining fruit, uniform size, sweet and soft to center; ripens early, continuing until middle of September. Dozen 75 cents; hundred \$2.25; thousand \$15.00.

Blackberry, Snyder. Very hardy. Berries medium size, produced abundantly; sweet, juicy, and without a hard core when fully ripe. Adapted to the northwest, where other varieties are injured in severe winters.

Wilson Junior. Moderately hardy, will do well in the Southern Middle States, and farther south. Vigorous grower and very productive; fruit large, good, early.

For collection of Blackberries, see page 35.

SEVEN OF THE BEST GRAPES

Vines are all strong two-year plants, true to name.

Grape, Brighton. Dark red; very early, quality best: should be planted near the Worden or Concord, or some other self-fertilizing variety to promote fruit setting. Each 20 cents; dozen \$1.25; hundred \$5.00.

Campbell's Early. Several years of observation and tests prove it a strong, vigorous, hardy vine; thick, healthy, mildew-resisting foliage; always sets its fruit well and bears abundantly; clusters large, usually shouldered, compact and handsome; berries large, nearly round, often an inch or more in diameter; black, with light purple bloom; skin thin but tenacious; bearing handling and shipping admirably; flavor rich, sweet, slightly vinous; flesh rather firm but tender; parting easily from its few and small seeds; very early; remarkable keeping qualities. Each 30 cents; dozen \$2.00.

Delaware. Light red, early, quality best. Each 20 cents; dozen \$1.25; hundred \$5.00.

Moore's Diamond. Bunches large, compact; berries large, white, with a whitish bloom; skin thin; flesh melting, juicy, sweet to center; vine healthy and an abundant bearer. Each 20 cents; dozen \$1.50; hundred \$6.50.

Grape, Niagara. Strong, vigorous grower; bunch and berries large and of good quality; color light green; very productive. Each 20 cents; dozen \$1.50; hundred \$6.50.

Nectar. A cross between Concord and Delaware. Vine hardy and a good grower; clusters of fruit of medium size, compact; berries medium size, color jet black, with a fine bloom; quality excellent, with a pure, rich, vinous flavor. Ripens at the same time as the Delaware. Each 25 cents; dozen \$2.00.

Worden. The best Black Grape, and the most productive and satisfactory of all varieties. Each 20 cents; dozen \$1.25; hundred \$5.00.

OTHER STANDARD VARIETIES.

Agawam, Lady, Catawba,
Pocklington, Concord.
Each 20 cents; dozen \$1.25; hundred \$5.00.

Collection No. 5—Grape Vines.

Six of the best varieties, for quality, yield, and hardness.

| | |
|--------------------------------------|--------|
| 1 Brighton (red) | \$0 20 |
| 1 Wyoming " | 20 |
| 1 Campbell's Early (black) | 30 |
| 1 Worden " | 20 |
| 1 Moore's Diamond (white) | 20 |
| 1 Niagara " | 20 |
| | \$1 30 |

Delivered Postage or Express Prepaid for \$1.00.

At the single and dozen prices we prepay mail or express charges. Hundred and thousand lots by express or freight, charges not prepaid.

RASPBERRIES—Red, Black, and Yellow.

There are two general types of Raspberries, and they require different treatment. Blackcaps, and others that increase from the ends of the canes, should be planted $3\frac{1}{2} \times 7$ feet. Prepare the land same as for Strawberries. Cultivate often enough to keep the soil loose and free from weeds. When the canes attain the height of one foot pinch off the end; this causes the canes to branch, grow stocky and self-supporting. In the spring of the bearing year cut these branches back to within six inches of the main stalk. After fruiting, cut out all the dead wood. Red Raspberries, and others that sucker, should be set $5 \times 3\frac{1}{2}$ feet apart, when they must be cultivated both ways. Allow only three or four canes in each hill to grow,—treat all others that spring up as weeds. When three or four feet high, pinch back cane same as with Blackcaps. The secret of raising fine crops of Raspberries is in rigorous pruning and keeping suckers down. If not checked, the tendency is to mat the surface with canes, when very little fruit is secured. For garden culture the red varieties may be set three feet apart each way, and Caps 4×3 feet.

COLUMBIAN RASPBERRY

This variety is so well advertised and so popular as a berry for the home garden that it is known from Maine to California. One-half dozen strong plants will supply a family with fruit, as it grows from eight to twelve feet high, and in fruiting season its branches are covered with fine, large, crimson berries. Plants perfectly hardy; have endured 28° below zero without freezing. Is the best in the world for canning, and grown largely for evaporating, retaining its color, form, and flavor remarkably. Each 10 cents; dozen 60 cents; hundred \$1.75; thousand \$12.00.

RASPBERRIES—RED

Cuthbert. A valuable late variety for home use or marketing; large, firm, and of superior quality; very productive. Dozen 50 cents; hundred \$1.25; thousand \$8.00.

Loudon. This Raspberry has been tested in many localities, and practical fruit growers agree that it is an advance beyond the best of the standard varieties. Hardier, better, and far more productive than Cuthbert, and the berries are larger and the drupes longer. Berries firm, bright red; cling to the stem and do not crumble in picking; splendid shipper. Plant vigorous, heavy yielding, and practically thornless. Dozen 65 cents; hundred \$2.50.

Marlboro. The largest of the early reds, ripening earlier than the Hansell. Similar to the Cuthbert, but is gone before the Cuthbert comes on. Canes dwarfish, fruit very prolific in rich soil. Dozen 50 cents; hundred \$1.25; thousand \$8.00.

RASPBERRIES—BLACK

Cumberland. A new black Raspberry, and a most remarkable one on account of its wonderful size and good qualities. It is thought to be a seedling from the Gregg, with a dash of Blackberry blood in it, but it is a true Raspberry; very hardy, having withstood a temperature of 16° below zero; very productive, making large crops of enormous berries about one inch in diameter. Fruit unusually firm and may be shipped long distances; in ripening season may be called a mid-season variety, coming in shortly ahead of the Gregg. Each 15 cents; dozen 90 cents; hundred \$5.00.

Gregg. Very large, fine quality, productive, late, hardy. Dozen 50 cents; hundred \$1.25; thousand \$8.00.

Mills. This new variety is extremely large, perfectly hardy, free from blight or rust, large as the Cumberland, very firm, and with a bloom somewhat like the Gregg. It has been the most productive of all the Black Raspberries we have tried, and brings the highest price of any in the market. Each 10 cents; dozen 60 cents; hundred \$2.00.

The Kansas. Early tips will grow from the buds (that in other kinds remain dormant) two to four feet the same fall, uninjured by frost. Stands drought well; produces more canes and branches and is much larger than the Gregg; jet black, firm texture. Dozen 50 cents; hundred \$1.50; thousand \$8.00.

Ohio. Fruit large, fine quality, and best of Cap sorts for drying. Strong, hardy, productive, late. Dozen 50 cents; hundred \$1.25; thousand \$8.00.

Palmer. Resembles Standard Early Tyler, but larger and better; recommended for early bearing. Dozen 50 cents; hundred \$1.25; thousand \$8.00.

For Collection of Raspberries see page 35.



LOUDON RASPBERRY

RASPBERRIES—YELLOW

Golden Queen. Very productive; fruit large, light amber color; equally as hardy as any other sort. Dozen 65 cents; hundred \$2.50.

GOOSEBERRIES

Gooseberries thrive best if planted where they will receive a partial shade. Plant the same distance as Currants. Gross feeders, liking a deep, rich soil.

Gooseberry, Chautauqua. Fruit a light yellow (nearly white), free from spines and hair. Thick skinned, very sweet, and of exquisite flavor. Each 35 cents; dozen \$3.50.

Downing's. A native seedling, greenish white, vigorous, hardy and prolific, large fruit. Free from mildew. Each 15 cents; dozen \$1.00.

Golden Prolific. Fruit large, deep golden yellow, excellent in quality and very attractive in appearance. Perfectly hardy, very prolific, a good grower and unusually free from mildew. Each 35 cents; dozen \$3.50.

Industry. A new foreign variety. Fruit dark red, very large, and of a rich, agreeable flavor; an immense yielder. Each 35 cents; dozen \$3.00.

Pearl. Grown from seed of Houghton, crossed with Ashton Seedling. Worthy of special notice because of its good quality, productiveness and freedom from mildew. Each 15 cents; dozen \$1.00.

See Collection No. 4, page 35.

At the single and dozen prices we prepay mail or express charges. Hundred or thousand lots by express or freight, charges not prepaid. Not less than 50 at the 100 rate.



CURRENT, RED CROSS

**Collection No. 1
STRAWBERRIES**

For the benefit of our customers who are not familiar with the different varieties of Strawberries, we offer a collection of five varieties, early, medium, and late, which in our judgment are best adapted for general garden culture.

| | |
|------------------------|--------|
| 12 Echo | \$0 35 |
| 12 Gandy | 25 |
| 12 Sample | 25 |
| 12 Seaford | 25 |
| 12 Rochester | 25 |
| | \$1.35 |

Five Varieties — Sixty Plants — for \$1.00
Postage or express prepaid

Collection No. 2—RASPBERRIES

Two dozen Raspberry plants are sufficient for family gardens of medium size, if the best varieties are selected.

In our No. 2 Collection are four of the best, both for yield and quality of fruit, and at a price so low that all can afford to plant.

| | |
|------------------------------|--------|
| RED—6 Miller's Red | \$0 25 |
| 6 Columbian | 30 |
| BLACK—6 Cumberland | 45 |
| 6 Palmer | 25 |
| | \$1 25 |

Four Varieties — Twenty-four Plants — for \$1.00
Postage or express prepaid.

CURRENTS

Choose a moist, rich soil for Currants, and keep it well manured. Plant five feet apart each way. Keep free from weeds and grass, and give liberal cultivation. To destroy the currant-worm that feeds on the leaves, dust them with powdered white hellebore.

Each, postage paid, 15 cents; dozen, \$1.00; hundred, \$4.00, except where noted. At the single and dozen prices we prepay mail or express charges. Hundred and thousand lots by express or freight, charges not prepaid.

All strong two-year old plants and true to name.

- Currant, Cherry.** Large, productive.
- Black Champion.** An English sort; fruit large, handsome, highly flavored; extra good for jams, etc.
- Fay's Prolific.** One of the best; very productive, large size, good flavor, bears early; adapted to light soils. Standard for market.
- Lee's Prolific.** Black; good for all purposes; early, large, productive.
- Pomona.** Strong, vigorous grower, entirely hardy and bears profitably the second year after planting; we can recommend it as one of the best red currants. Each 15 cents; dozen, \$1.00; hundred, \$5.50.
- Red Cross.** New variety, fully tested and found worthy of introduction; plants strong, vigorous, and very productive; clusters large, often four inches long; berries large; fruit grows in masses, giving additional facilities in gathering; fruit of superior quality; a trial will both please and satisfy you. Each 15 cents; per dozen, \$1.00; hundred, \$6.00.
- Victoria.** A splendid variety, ripens two to three weeks later than the others, continuing in fine condition for a long time; bunches very long, medium-sized bright red berries of the best quality.

**Collection No. 3
BLACKBERRIES**

Three varieties hard to beat; luscious, extra high flavor, enormous sizes, perfectly hardy.

| | |
|----------------------|--------|
| 4 Agawam | \$0 20 |
| 4 Eldorado | 25 |
| 4 Rathbun | 35 |
| | \$0 80 |

Three Varieties — Twelve Plants — for 60 cents
Postage or express prepaid

**Collection No. 4
CURRENTS and GOOSEBERRIES**

Just enough for family garden.

| | |
|---------------------------------|--------|
| 6 Fay's Prolific red | \$0 50 |
| 2 Black Champion | 30 |
| 2 White Grape | 30 |
| 2 Gooseberries, Pearl | 30 |
| | \$1 40 |

Four Varieties — Twelve Plants — for \$1.00.
Postage or express prepaid.

| | | | | | | | | | | | | | | |
|---|---|-------------------------------|--------|----------------------------|------|-----------------------------|----|--|------|-----------------------|------|------------------------|---------------|--|
| <p>Grand Collection of SMALL FRUITS</p> | <table border="0"> <tr> <td>No. 1, Strawberries</td> <td>\$1 00</td> </tr> <tr> <td>" 2, Raspberries</td> <td>1 00</td> </tr> <tr> <td>" 3, Blackberries</td> <td>60</td> </tr> <tr> <td>" 4, Currants and Gooseberries</td> <td>1 00</td> </tr> <tr> <td>" 5, Grapes</td> <td>1 00</td> </tr> <tr> <td>Total</td> <td>\$4 60</td> </tr> </table> | No. 1, Strawberries | \$1 00 | " 2, Raspberries | 1 00 | " 3, Blackberries | 60 | " 4, Currants and Gooseberries | 1 00 | " 5, Grapes | 1 00 | Total | \$4 60 | <p>114 PLANTS 22 Varieties FOR \$4.00</p> |
| No. 1, Strawberries | \$1 00 | | | | | | | | | | | | | |
| " 2, Raspberries | 1 00 | | | | | | | | | | | | | |
| " 3, Blackberries | 60 | | | | | | | | | | | | | |
| " 4, Currants and Gooseberries | 1 00 | | | | | | | | | | | | | |
| " 5, Grapes | 1 00 | | | | | | | | | | | | | |
| Total | \$4 60 | | | | | | | | | | | | | |

Standard Vegetable and Flower Seeds

MANY of our patrons in the Southern States and California have written us saying that the regular edition of our Garden and Floral Guide reaches them too late for the planting season. We shall endeavor to have the Guide in your hands much earlier this year than last, but to cover the contingency of early orders we present herewith a few pages of standard varieties of Vegetable and Flower Seeds, and the leading new ones which we have found of merit.

PRICES here given will conform as closely as possible to our Spring Catalogue; if there should be changes to your benefit we will allow you for them,—so do not wait, but order early.

SEED POTATOES — While it is too early to print prices on these in quantities, we wish to say we are in the center of the greatest and best potato-growing district in the United States, and should be pleased to quote special prices on any quantity up to carloads.

Asparagus ½ oz oz ¼ lb lb
 Vick's Mammoth \$0 05 \$0 10 \$0 30 \$1 00

Borecole or Kale
 Dwarf Curled, pkt 5 cts 10 30 1 00

Beans, Dwarf Wax
Jones' Stringless White Seed Round Pod. This absolutely stringless Bean of bush type is a week earlier than any other variety; the pods form very quickly, and are long, perfectly round, and exceptionally solid, of a delicate light yellow color, free from rust. When ripe the seeds will grade in the market as No. 1 Medium or small Marrows, being the first true wax pod variety having qualities adapted to the produce trade; and if left to ripen, a larger yield of dry beans can be harvested than from the field varieties. Pkt. 10 cents; ½ pt., 20 cents; qt., 35 cents; qt. 60 cents.

| | ½ pt | qt | pk | bu |
|-----------------------------|--------|--------|----|----|
| New Prolific German Wax | \$0 10 | \$0 40 | | |
| Improved Golden Wax . . . | 10 | 40 | | |
| Currie's Rust Proof | 10 | 40 | | |
| Davis White Kidney | 10 | 40 | | |
| Wardwell's Kidney Wax . . . | 10 | 40 | | |

Green Pod Dwarf Snap Beans
Stringless Green Pod. Best stringless green pod Bean in cultivation. Pods absolutely stringless; full, fleshy, crisp, and of tender flavor, remaining long in edible condition. Ready for market two weeks earlier than Valentine, and very prolific; qt., 40 cents; ½ pt., 10 cents.

| | ½ pt | qt | pk | bu |
|-----------------------------------|------|----|----|----|
| Extra Early Red Valentine | 10 | 40 | | |
| Long Yellow Six Weeks . . . | 10 | 40 | | |
| True Bush Lima (Burpee's) pkt. 10 | | | 60 | |

Beets
Extra Early Eclipse. This variety is exceedingly popular, and is one of the best early sorts. The tops are small, which admits of close planting; roots are of a globular shape; flesh fine-grained, very sweet, crisp and tender when young; dark red, zoned with a lighter shade; ½ ounce 5 cents; ounce 10 cents; ¼ pound 20 cents; pound 60 cents.

| | ½ oz | oz | ¼ lb | lb |
|-----------------------------|------|----|------|----|
| Crosby's Egyptian | 05 | 10 | 25 | 75 |
| Egyptian Blood Turnip . . . | 05 | 10 | 20 | 60 |
| Edmand's Blood Turnip . . . | 05 | 10 | 20 | 60 |
| Detroit Dark Red Turnip . . | 05 | 10 | 25 | 75 |
| Long Blood Red | 05 | 10 | 20 | 60 |

Mangel Wurzel
 Golden Giant 05 15 40
 Vick's Mammoth Long Red 05 15 40

Carrots
 Earliest French Forcing . . . 05 10 25 85
 Half Long Scarlet Stump . . . 05 10 25 85
 Chantenay Stump-rooted . . . 05 10 25 85
 Guerande or Oxheart 05 10 25 85
 Improved Long Orange 05 10 25 75

Cabbage
Vick's 20th Century (Extra Early). This new variety came to us from Denmark, the home of the famous Danish Ballhead Winter Cabbage, and is without exception the earliest Cabbage ever introduced. Up to this time the Jersey Wakefield has been cultivated for earliest of all Cabbage, producing pointed or so-called sugar-loaf heads, but in the 20th Century we have the round shape, like All Seasons and others, which is the preferable form of head. It grows more compactly, thus yielding a much larger crop than either Wakefield or Winnigstadt. For garden or market use it is unexcelled. Packet 10 cents; ounce 40 cents; ¼ pound \$1.25; pound \$4.00.



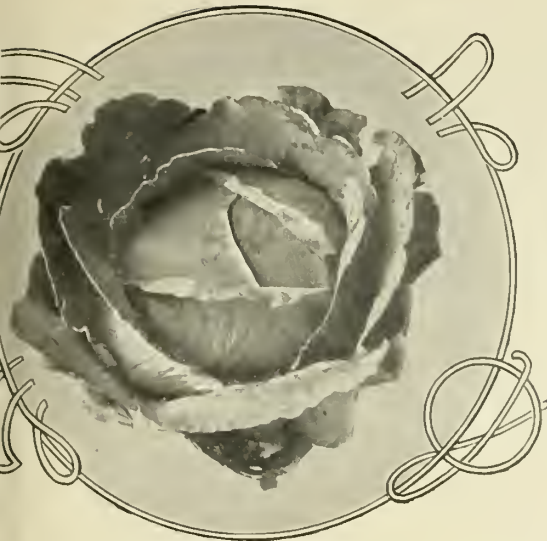
BEAN, NEW STRINGLESS GREEN POD

Cabbage
Selected Early Jersey Wakefield. The leading early variety and most popular for private or market gardeners' use. Our stock of this standard Cabbage is grown and selected with the greatest care, and can be relied upon both in vitality of seed and trueness to type. Heads are conical in shape, solid and compact. Packet 5 cents; ounce 25 cents; pound \$3.00.

| | pkt | ¼ oz | oz | ¼ lb | lb |
|---------------------------------------|-----|------|----|------|------|
| Charleston Wakefield | 05 | | 25 | | 3 00 |
| Improved Early Summer . . . | 05 | | 25 | | 2 50 |
| Succession | 05 | | 25 | | 2 50 |
| All Seasons | 05 | | 25 | | 2 50 |
| Selected Premium Flat Dutch | 05 | 05 | 20 | | 2 00 |
| Mammoth Rock Red | 05 | | 25 | | 2 50 |
| Improved Danish Ballhead | 05 | 10 | 25 | | 2 50 |

Cucumber
Vick's Perfection White Spine. We have for several years been improving this valuable strain, our selections being made only from the choicest and most perfect fruits. It excels in earliness, no other strain of the many varieties we have tested being equal to it. In shape and uniformity of size, in color and productiveness, it has no rival. For forcing it is preferred to all others, except, perhaps, the forcing sorts, while for small pickles it is the very best White Spine Cucumber in cultivation; packet 5 cents; ounce 15 cents; pound \$1.25.

| | ½ oz | oz | ¼ lb | lb |
|--------------------------------------|------|----|------|----|
| Early Green Cluster | 05 | 10 | | 60 |
| New Emerald | 05 | 10 | | 75 |
| Early Green Prolific | 05 | 10 | | 60 |
| Improved Early White Spine | 05 | 10 | | 60 |
| Cool and Crisp | 05 | 10 | | 60 |
| Improved Long Green | 05 | 10 | | 60 |
| Thorburn's Everbearing | 05 | 10 | | 60 |
| Chicago Pickling | 05 | 10 | | 60 |



CABBAGE, ALL SEASONS

| | | | | |
|------------------------------------|--------|------|------|------|
| Cauliflower | ¼ oz | oz | ¼ lb | lb |
| Vick's Ideal, packet 30 cts | \$1 75 | 5 00 | | |
| Early Snowball, pkt 15 cts | 1 00 | 3 00 | | |
| Collards—True Georgia . . . | 05 | 10 | | 1 00 |

Celery
White Plume. A variety specially adapted to cultivation by amateurs, as its inner stalks and leaves are naturally white, and do not require blanching by the old process of high banking. By simply tying up the stalks and drawing up the soil with the hoe, the work of blanching is complete. It is ornamental, tender, crisp, and of good flavor. ¼ ounce 5 cents; ounce 25 cents; pound \$2.50.

| | | | | |
|---|------|----|------|------|
| Improved Golden Heart . . . | ¼ oz | oz | ¼ lb | lb |
| Paris Golden Dwarf Self-Blanching, pkt 10 cents . . . | 05 | 20 | | 2 00 |

| | | | | |
|------------------------------|------|-------|----|----|
| Corn | ½ pt | qt | pk | bu |
| Vick's Earliest of All . . . | 15 | 4 1/2 | | |
| Mammoth White Cory . . . | 10 | 49 | | |
| Perry's Hybrid Sugar . . . | 10 | 35 | | |
| Stowell's Evergreen . . . | 10 | 35 | | |
| Country Gentleman . . . | 10 | 35 | | |

| | | | | |
|---|------|----|------|------|
| Egg Plant | ½ oz | oz | ¼ lb | lb |
| Improved New York Purple, packet 10 cents . . . | 20 | 35 | | 3 50 |

| | | | | |
|----------------------------------|------|----|------|------|
| Endive | | | | |
| Moss Curled, pkt 5 cents . . . | | 15 | | 1 50 |
| White Curled, pkt 5 cents . . . | | 15 | | 1 50 |
| Kohl Rabi—packets 5 cents | ¼ oz | oz | ¼ lb | lb |
| Early White Vienna . . . | | 20 | | 2 00 |
| Early Purple Vienna . . . | | 20 | | 2 00 |
| Large Early White or Green . . . | | 20 | | 2 00 |

Lettuce—¼ oz., each 5 cents
Vick's Royal. A fine new variety largely used in the Paris markets. The seed we offer comes direct from the originator. It produces a medium-sized head of a beautiful golden color, crisp and tender; a grand acquisition. ¼ ounce 5 cents; ounce 15 cents; ¼ lb., 50 cents; pound \$1.50.

| | | | | |
|--|----|----|----|------|
| New Premium Cabbage . . . | 05 | 20 | 50 | 1 50 |
| Imperial White Cabbage . . . | 05 | 10 | 30 | 1 00 |
| Grand Rapids Forcing . . . | 05 | 15 | 40 | 1 25 |
| Golden Queen . . . | 05 | 15 | 50 | 1 50 |
| Early Tennis Ball or Boston Market . . . | 05 | 10 | 30 | 1 00 |
| Early Hanson . . . | 05 | 10 | 30 | 1 00 |
| Black Seeded Simpson . . . | 05 | 15 | 40 | 1 25 |

Muskmelon
Vick's Irondequoit. In form it is nearly round, slightly flattened at the ends, and is of good size. Its fine netted skin, yellow when ready for picking, and its beautiful dark orange-colored flesh, added to its unequalled rich, rare, and spicy flavor, at once places the Irondequoit far in advance of all others. Packet 5 cents; ounce 25 cents; ¼ lb., 75 cents; lb., \$2.50.

| | | | | |
|------------------------------|----|----|----|------|
| Vick's Prolific Nutmeg . . . | 05 | 10 | 35 | 1 00 |
| Rocky Ford . . . | 05 | 10 | 25 | 1 00 |
| Paul Rose . . . | 05 | 10 | 25 | 75 |
| Golden Netted Gem . . . | 05 | 10 | 20 | 60 |
| Jenny Lind . . . | 05 | 10 | 25 | 75 |

Watermelon

Sweet Heart. A new variety of largest size, nearly globular in shape; skin a bright, beautiful, mottled green; flesh bright red, firm and heavy, but crisp, melting, and exceedingly sweet. A good keeper, and improves in quality for a long time after ripening; half ounce 5 cents; ounce 10 cents; ¼ lb., 20 cents; lb., 50 cents.

| | | | | |
|------------------------------|----|----|----|----|
| Cole's Early . . . | 05 | 10 | 20 | 50 |
| Ice Cream, or Peerless . . . | 05 | 10 | 20 | 50 |
| Kolb's Gem . . . | 05 | 10 | 20 | 50 |
| New Dixie . . . | 05 | 10 | 20 | 50 |
| Pride of Georgia . . . | 05 | 10 | 20 | 50 |
| Seminole . . . | 05 | 10 | 20 | 50 |

Mustard

| | | | | |
|--|--|----|----|----|
| Giant Southern Curled, pkt 5 cents . . . | | 10 | 25 | 75 |
| Okra—Packets 5 cents. | | | | |
| White Velvet . . . | | 10 | 20 | 60 |
| Mammoth Long Pod . . . | | 10 | 20 | 60 |

Onions—¼ oz each 5 cents, unless otherwise noted.

Danvers Yellow Globe—"Vick's Home Grown Strain" stands at the head, and is the finest and best in the world without exception, when uniformity in shape and beauty of bulbs is considered. ¼ oz., 5 cents; oz., 15 cents; ¼ lb., 50 cents; lb., \$1.50.
Prize Taker, or Spanish Yellow Globe. A bright straw color, thin skinned, and of immense size; makes a handsome appearance in the market. ¼ oz., 5 cents; oz., 20 cents; ¼ lb., 50 cents; lb., \$1.60.

| | | | |
|---|-----|------|------|
| | oz. | ¼ lb | lb |
| Extra Early Flat Red . . . | 15 | 35 | 1 25 |
| Wethersfield Large Red . . . | 15 | 35 | 1 25 |
| Southport Red Globe, pkt. 5 cents . . . | | 20 | 50 |
| White Globe, pkt. 5 cents . . . | 25 | 70 | 2 25 |
| Italian—New Queen, pkt. 5 cents . . . | 20 | 60 | 2 00 |
| Mammoth White Garganis or Silver King, pkt. 5 cts | 20 | 60 | 2 00 |

Egyptian or Perennial Tree Onion Sets

When once set out, they will come up year after year as soon as the frost is over. They need no protection; grow rapidly, and are very productive. Quart 25 cents; peck \$1.00; bushel \$3.00.

At quart prices we prepay postage. Bushel and peck delivered at freight or express office, Rochester.

Parsnips

| | | | | |
|-------------------------|------|-----|------|----|
| | ½ oz | oz. | ¼ lb | lb |
| Improved Guernsey . . . | 05 | 10 | 15 | 50 |
| Long Hollow Crown . . . | 05 | 10 | 15 | 50 |

Parsley—packet each 5 cents

| | | | |
|------------------------------|----|----|------|
| Champion Moss Curled . . . | 10 | 20 | 60 |
| Giant Curled . . . | 10 | 20 | 60 |
| Beauty of the Parterre . . . | 15 | 30 | 1 00 |

Peas—Extra Early Sorts

Gradus (Prosperity). As an extra early pea the Gradus, being a sugar pea, is far superior to all smooth varieties, not only in its delicious quality, but also in the long pods. While the early smooth varieties contain but four to five peas to the pod, the Gradus, usually contains from eight to twelve. Quart 60 cents; peck \$3.25; bushel \$12.00.



LETTUCE, IMPERIAL WHITE CABBAGE



PEAS, NOTT'S

EXCELSIOR

Peas—Extra Early Sorts

Thomas Laxton. First-Early Large-Podded Pea. The pods are large and shapely, of a rich dark green color, and filled with seven to eight very large white-seeded, wrinkled sugar peas, the flavor of which is unsurpassed by any other Pea in cultivation. The vines are strong and hardy, and from three to three and a half feet in height. Packet 15 cents; ½ pint 40 cents; pint 75 cents; quart \$1.25.

Vick's Extra Early. The earliest of the early white peas; unsurpassed for either market or family use; of excellent quality; unusually productive for so early a variety. Vines two and one-half feet high. Quart 40 cents; peck, \$1.35; bushel \$5.00.

| | qt | pk | bu |
|---|----|------|------|
| Alaska | 40 | 1 50 | 5 50 |
| New Surprise | 40 | 1 60 | 6 00 |
| Vick's King of the Dwarfs | 40 | 1 60 | 6 00 |
| Extra Early Premium Gem | 40 | 1 75 | 6 50 |
| Bliss' American Wonder . . . | 40 | 1 75 | 6 50 |
| McLean's Little Gem | 40 | 1 75 | 6 50 |
| Nott's Excelsior (see engraving on page 38) . . . | 50 | 1 80 | 7 00 |

Second Early or Medium

Vick's Daisy. The Daisy is a second-early Pea; vines two feet in height, bearing well-filled pods containing seven to nine large deliciously-flavored peas. Without a doubt one of the finest dwarf early green wrinkled Marrow Peas in cultivation; requires no stakes; quart 50 cents; peck \$1.80; bushel \$7.00.

| | qt | pk | bu |
|------------------------------|----|------|------|
| McLean's Advancer | 40 | 1 35 | 5 00 |
| Bliss' Abundance | 40 | 1 35 | 5 00 |
| Bliss' Everbearing | 40 | 1 35 | 5 00 |
| Heroine | 40 | 1 35 | 5 00 |
| Horsford's Market Garden | 40 | 1 35 | 5 00 |
| Long Island Marrow | 40 | 1 35 | 5 00 |
| Telephone | 40 | 1 50 | 5 50 |

Main and Late Crop

| | | | |
|--------------------------------|----|------|------|
| Pride of the Market | 40 | 1 35 | 5 00 |
| Stratagem | 40 | 1 50 | 5 50 |
| Vick's New Charmer | 40 | 1 40 | 5 00 |
| Champion of England | 40 | 1 10 | 4 00 |
| White Marrowfat | 35 | 75 | 2 75 |
| Black-eyed Marrowfat | 35 | 75 | 2 75 |

Pecks and Bushels are shipped at expense of purchaser.

Pepper—Packet, each 5 cents

| | ½ oz | oz | ¼ lb | lb |
|--|------|----|------|----|
| Ruby King | 25 | 60 | 2 25 | |
| Golden Dawn | 25 | 60 | 2 25 | |
| Large Bell or Bill Nose, Sweet Mountain or Mammoth | 25 | 60 | 2 25 | |
| Long Red Cayenne | 25 | 60 | 2 25 | |

Pumpkins

| | | | | |
|--------------------------------|----|----|----|------|
| Sugar | 05 | 10 | 20 | 60 |
| Winter Luxury | 05 | 10 | 25 | 75 |
| King of the Mammoths | 05 | 10 | 30 | 1 00 |

Radish

Vick's Early Scarlet Globe. As a forcing Radish the Early Scarlet Globe has established a reputation as the leading sort—the best in every way. It is handsome in

form and color—a beautiful oval and rich scarlet. The amount of its foliage is small compared with other varieties and small for the size of the radish. The peculiar merit of this variety as a forcing radish, is that it will bear the heat requisite for forcing without becoming pithy or spongy. The flesh is crisp, tender, juicy, and mild. It is equally as good for open garden culture as for forcing, and therefore it commends itself equally to the amateur and market gardener. ½ ounce 5 cents ounce 10 cts.; ¼ lb., 25 cts.; lb., 80 cts. ½ oz oz ¼ lb lb

Extra Early Scarlet Turnip

| | | | | |
|--|----|----|------|----|
| Rooted | 05 | 10 | 20 | 60 |
| Early Round Dark Red | 05 | 10 | 20 | 60 |
| Scarlet Turnip White Tip forcing | 05 | 10 | 20 | 60 |
| White Turnip | 05 | 10 | 20 | 60 |
| Yellow Turnip | 05 | 10 | 20 | 60 |
| Scarlet Olive Shape | 05 | 10 | 20 | 60 |
| French Breakfast | 05 | 10 | 20 | 60 |
| Philadelphia White Box | 05 | 10 | 20 | 60 |
| Wood's Early Frame | 05 | 10 | 20 | 60 |
| Long Scarlet Short Top | 05 | 10 | 20 | 60 |
| Vick's All Seasons | 15 | 40 | 1 25 | |
| Beckert's Chartier | 05 | 10 | 20 | 60 |
| Long White Vienna or Lady Finger | 05 | 10 | 20 | 60 |
| White Strasburg | 05 | 10 | 20 | 60 |
| Giant White Stuttgart | 05 | 10 | 20 | 60 |
| Chinese Rose Winter | 05 | 10 | 20 | 60 |
| Black Spanish Winter | 05 | 10 | 20 | 60 |
| White Spanish Winter | 05 | 10 | 20 | 60 |
| California Mammoth White Winter | 05 | 10 | 20 | 60 |

Squash

Mammoth Bush Summer Crookneck. The richest and best of the Summer Squash. Early and productive. It is almost twice as large as the ordinary Summer Crookneck. ½ ounce 5 cents; ounce 10 cents; ¼ lb., 20 cents; lb., 60 cents.

| | | | | |
|---|------|----|------|----|
| Early White Bush Scallop (summer) | ½ oz | oz | ¼ lb | lb |
| Improved Orange Marrow (fall) | 05 | 10 | 20 | 60 |
| Hulbard (winter) | 05 | 10 | 25 | 80 |

New Golden Bronze. Weight from eight to ten pounds; color, a dark grayish green, with bronze on the upper surface when ripe; flesh golden yellow, very thick, fine-grained, dry, sweet, and of delicious flavor. Matures early and is a splendid keeper and good yielder. ½ ounce 5 cents; ounce 15 cents; ¼ lb., 40 cents; lb., \$1.25.

Spinach

| | | | | |
|--|----|----|----|----|
| Improved Long-Standing | 05 | 10 | 15 | 35 |
| New Thick-leaved or Viroflay | 05 | 10 | 15 | 35 |
| Bloomsdale Savoy-leaved | 05 | 10 | 15 | 35 |
| Prickly or Fall | 05 | 10 | 15 | 35 |
| Victoria | 05 | 10 | 15 | 35 |

Salsify

| | | | |
|-------------------------|----|------|------|
| White French | oz | ¼ lb | lb |
| Mammoth Sandwich Island | 10 | 40 | 1 25 |
| | 15 | 50 | 1 50 |

Tomato— $\frac{1}{4}$ oz 5 cents, unless otherwise noted

Earliana. The Earliest Large Smooth Red Tomato.

This new and valuable addition to the list is a full week ahead of all others. The plant is of strong and vigorous growth, setting its fruit freely and in great abundance. Remarkable for its earliness, large size, perfect form, bright red color, and delicious flavor. Ripens clear to the stem, and does not crack. Equal to the best medium and late sorts. Packet 10 cents; ounce 50 cents.

Atlantic Prize or Early Ruby. Possesses extra good qualities; extremely early; vines vigorous and strong; fruit borne in immense clusters. $\frac{1}{4}$ ounce 5 cents; ounce 20 cts.; $\frac{1}{4}$ lb., 60 cts.; lb., \$2.00. $\frac{1}{4}$ oz oz $\frac{1}{4}$ lb lb

| | | | | |
|------------------------------|----|----|----|------|
| Bright and Early, pkt 5 cts | | 25 | 85 | 3 00 |
| Beauty | 05 | 20 | 50 | 1 75 |
| Dwarf Aristocrat pkt. 5 cts. | | 25 | 75 | 2 50 |
| Dwarf Champion pkt 5 cts. | | 25 | 75 | 2 50 |
| Honor Bright, | 05 | 20 | 60 | 2 00 |
| Large Yellow | 05 | 20 | 60 | 2 00 |
| New Stone | 05 | 20 | 60 | 2 00 |
| Ponderosa pkt. 5 cents . . | | 25 | 85 | 3 00 |

Turnips

Purple-Top Strap-Leaved. Flat, of medium size, purple above ground, white below; the most popular variety for early use, either for table or stock. Ounce 5 cents; $\frac{1}{4}$ lb 15 cents; pound 50 cents. oz $\frac{1}{4}$ lb lb

| | | | |
|---|----|----|----|
| Strap-leaved White Top . . | 05 | 15 | 50 |
| Early White Six Weeks or Snowball | 10 | 25 | 75 |
| Purple-Top White Globe . . | 05 | 15 | 50 |
| New White Egg | 05 | 15 | 50 |
| Pomeranian White Globe . . | 05 | 15 | 50 |
| Orange Jelly | 05 | 15 | 50 |
| Yellow Globe | 05 | 15 | 50 |
| Purple-Top Yellow Aberdeen | 05 | 15 | 50 |
| Long White Cow Horn | 05 | 15 | 50 |
| Seven Top | 05 | 15 | 50 |



TOMATO, EARLIANA

Ruta Baga

| | | | |
|---|----|----|----|
| White Sweet | 05 | 15 | 50 |
| Vick's Imperial Purple-Top (yellow) | 05 | 15 | 50 |
| Hall's Westbury | 05 | 15 | 50 |
| Laing's Purple-Top | 05 | 15 | 50 |

Vick's Velvet Lawn Grass. A pure, heavy and clean seed, which will make almost a velvet lawn surface. It is the finest mixture ever offered to the public, and will stand winter, and shows constantly a deep rich green. Price per bushel (20 lbs.), \$4.00; peck (5 lbs.), \$1.10; less than peck quantity, per lb., 40 cents, prepaid; per quart, 25 cents, prepaid.

FLOWER SEEDS

Most varieties of biennials and perennials, when sown in open ground in the fall, need but slight protection during the winter, and will produce full blooms the next season. Many hardy annuals, if given the same treatment, will come up early in the spring and make robust flowering plants.

| | | | |
|--|----|---|----|
| Adonis vernalis. Yellow | 5 | Lychnis Chalcedonica —Scarlet | 5 |
| Alyssum —Sweet, per oz., 25 cents | 5 | Morning Glory (Convolvulus major)—Mixed colors per oz. 15 cents | 5 |
| Benthami compactum, per oz. 50 cents | 5 | Petunia —Bedding varieties. Extra choice mixed; superb strain | 10 |
| Saxatile compactum. Yellow | 5 | Fine mixed | 5 |
| Aquilegia cœrulea —Sky blue and white | 10 | Phlox Drummondii —Fine mixed | 5 |
| Leptoceras chrysantha. Canary-yellow | 5 | Grandiflora. Choice mixed | 10 |
| Double varieties mixed | 5 | Nana compacta. Best mixed | 10 |
| Single varieties mixed | 5 | Perennial Peas —Mixed varieties | 5 |
| Calliopsis —Extra choice mixed | 10 | Poppy. Annual varieties : | |
| Fall varieties mixed | 5 | American Flag. Double. Snow-white bordered with scarlet | 5 |
| Tom Thumb. Mixed varieties | 5 | Cardinal. New hybrids mixed | 10 |
| Candytuft —Empress. Pure white. The finest of the annual varieties. Per oz. 35 cents | 10 | Carnation-flowered. Splendid double. Mixed colors | 5 |
| Mixed colors, per oz. 20 cents | 5 | Danish Flag. Brilliant scarlet; white cross at base | 5 |
| New Dwarf Hybrid. Fine for edging. Mixed colors | 10 | Fairy Blush. Double. White, tipped rose; beautifully fringed | 5 |
| Iberis Gibraltarica. Perennial. Lilac shading to white | 10 | Mikado. Double. Resembles the Japanese Chrysanthemum. White, edged with brilliant scarlet | 5 |
| Iberis sempervirens. Perennial. White | 10 | Pæony-flowered. Double. Mixed colors | 5 |
| Centauria Cyanus (Bachelor's Button)—Mixed colors | 5 | Ranunculus-flowered. Double. Mixed colors | 5 |
| Collinsia —Mixed varieties | 5 | Shirley. The best and most showy of all the single Poppies. Mixed colors | 5 |
| Coreopsis lanceolata —Yellow. Fine for cutting | 10 | The Tulip. Very distinct. Vivid scarlet | 10 |
| Dianthus —Chinensis (Chinese or Indian Pink). Best double varieties mixed, per oz. 35 cents | 5 | Vick's Brilliant. A superior variety. Round as a ball; perfectly double. Mixed colors | 10 |
| Imperial fl. pl. (Double Imperial Pink). Mixed colors | 5 | All annual varieties mixed in one packet | 5 |
| Hedderwigii. Double varieties mixed | 5 | Poppy. Perennial varieties : | |
| “ Single varieties mixed | 5 | Iceland (Papaver nudicaule). White, yellow, or orange. Separate or mixed, each | 5 |
| “ Diadem Pink. One of the most brilliant of the Hedderwigii varieties. Mixed colors | 10 | Oriental (Papaver orientale). Very large. Flowers brilliant scarlet | 5 |
| “ Laciniatus. Double varieties mixed | 5 | Sweet Rocket —Purple and white. Each | 5 |
| “ “ Single varieties mixed | 5 | Sweet William —Perfection. Single varieties mixed | 5 |
| “ Double and single varieties mixed | 5 | Double varieties mixed | 5 |
| Plumarius, (June Pink). Double varieties mixed | 10 | Dunnetti. Single. Blood-red | 5 |
| “ Single varieties mixed | 5 | White. Single. Constant | 5 |
| Digitalis (Foxglove)—Mixed varieties | 5 | | |
| Eschscholtzia (California Poppy)—All varieties mixed | 5 | | |
| Forget-me-not—See Myosotis. | | | |
| Gypsophila paniculata (Baby's Breath)—White | 5 | | |
| Larkspur —See Delphinium. | | | |

Sweet Peas—We have made a selection of the most desirable colors and which will prove satisfactory for many cultivators of this beautiful flower; still, it must be understood we have in store all other varieties catalogued by other seedsmen, and at the same prices as here quoted. All named Sweet Peas 5 cts. per packet, one dozen packets for 40 cts.; 10 cts. per oz., postpaid.

- AMERICA. Cardinal stripe on white ground.
- AURORA. Striped orange-salmon on white.
- BLANCHE BURPEE. Large, pure white.
- BLANCHE FERRY. Rose-red; wings blush white.
- BLANCHE FERRY, EXTRA EARLY. Color same, but two weeks earlier; dwarf.
- CAPIVATION. Light magenta, or bright claret.
- COQUETTE. Creamy primrose, shaded with lavender.
- COUNTRESS OF RADNOR. Pale lavender-mauve.
- DUKE OF CLARENCE. Deep rosy claret.
- DUCHESS OF SUTHERLAND. White, veiled with blush-pink.
- DUKE OF SUTHERLAND. Purplish maroon; wings violet-purple.
- EMILY ECKFORD. Reddish mauve, changing to light blue.
- EMILY HENDERSON. Large, pure white.
- GRAY FRIAR. Watered purple on white ground.
- HON. F. BOUVERIE. Pinkish salmon; wings lighter salmon-buff.
- JUANITA. White, delicately striped with lavender.

Vick's Invincible Mixture, packet, 5 cents; ounce, 10 cents; quarter pound, 30 cents; pound, eighty cents, postpaid.
 Eckford's Gilt Edge Mixture, packet, 5 cents; ounce, 10 cents; quarter pound, 20 cents; pound, 50 cents, postpaid.
 Fine Mixed Sorts, ounce, 5 cents; quarter pound, 15 cents; half pound, 25 cents; pound, 40 cents, postpaid.

The following varieties require the protection of coldframes in cold latitudes.

- Antirrhinum** (Snapdragon)—New Giant Flowered, pkt
 mixed colors 10
 Extra fine mixed, from selected show flowers 10
 Fine mixed 5
 Tom Thumb. Mixed colors 5
- Campanula** *Carpatica*—White and blue mixed 5
Grandiflora (Platycodon). Deep blue 10
 Medium (Canterbury Bell). Double varieties mixed 5
 " Single varieties mixed 5
 " Calycanthema (Cup and Saucer) 5
 Pyramidalis (Chimney Bellflower) 5
- Delphinium** (Larkspur)—Dwarf Rocket. Double.
 Mixed colors, per oz. 25 cents 5
 Tall Rocket. Double. Showy. Mixed colors 5
 Stock-flowered. Double. Branching. Fine for cutting 5
 Candelabrum. Mixed colors 10
 Imperiale (Emperor Larkspur). Double. Compact; brilliant. Mixed colors 5
 Formosum. Brilliant blue, white eye 5
 Nudicaule. Bright scarlet. Dwarf 5
 Chinensis. Fine. Mixed colors 5
 Elatum hybridum (Bee Larkspur). Finest varieties mixed 10
- Hollyhock**—Double. Mixed varieties 10
 Fringed Mammoth Allegheny, mixed varieties 10
- Pentstemon**—Mixed varieties 5

- KATHERINE TRACY. Lovely bright pink.
- LADY MARY CURRIE. Veined orange-pink; wings rose-pink.
- LADY GRISEL HAMILTON. Light lavender; wings azure-blue.
- LOVELY. Soft shell pink, shading to soft rose.
- MAID OF HONOR. Lavender and white, edged blue.
- MRS. ECKFORD. Beautiful primrose-yellow.
- MRS. DUGDALE. Carmine-rose, shaded primrose.
- MRS. JOSEPH CHAMBERLAIN. White, striped with bright rose.
- NAVY BLUE. Rich violet-purple.
- PRIMA DONNA. Exquisite soft clear pink.
- QUEEN VICTORIA. Primrose-yellow, faintly suffused with purple.
- RAMONA. Creamy white, daintily splashed with pale pink.
- ROYAL ROSE. Deep rose; wings light pink.
- SALOPHAN. Rich deep crimson, tinged with orange-scarlet.
- SENSATION. White, suffused with faint blush-pink; wings white.
- STELLA MORSE. Creamy pink, clouded rosy apricot.
- VENUS. Salmon-buff, shaded rosy pink.

quater pound, 30 cents; pound, eighty cents, postpaid.
 quarter pound, 20 cents; pound, 50 cents, postpaid.
 Fine Mixed Sorts, ounce, 5 cents; quarter pound, 15 cents; half pound, 25 cents; pound, 40 cents, postpaid.

- Myosotis** (Forget-me-not)—Alpestris. Blue, white, and pkt
 rose. Each 5
 Alpestris robusta grandiflora. Very fine. Blue, with
 well defined yellow eye. Flowers in large clusters 10
 Azorica cælestina. Sky-blue 10
 Palustris (True Forget-me-not). Bright blue, with a
 yellow eye 10
 Vick's Perfection. The finest variety known. Flowers
 bright blue 15
 Mixed varieties 5
- Pansy**—Bugnot's Superb Blotched, mixed varieties 15
 Cardinal, brilliant dark red 10
 Cassier, new Large-Flowered, Blotched, mixed 15
 Coquette de Poisy, distinctive mauve 10
 Emperor William 5
 Faust, or King of the Blacks 5
 Lord Beaconsfield, purple-violet, shading to light blue 5
 Odier, or Large-Eyed, mixed varieties 15
 Parisian (stained) 15
 Peacock, large, blue 10
 President Carnot 15
 Red Riding Hood 10
 Snowy White, or Snow Queen 5
 Striped and Mottled 5
 Trimardean, or Giant, mixed varieties 10
 Vick's Superb Mixture of all the choicest strains 50
 Vick's Peerless, very large-flowering, mixed colors 20
 Fine mixed 5

STANDARD COLLECTIONS OF BULBS

HIGHLAND PARK BED
 OF

Single and Double Hyacinths

This brilliant bed is circular, six feet across, or eighteen feet in circumference, requiring a total of 127 bulbs planted six inches apart. The center and first two rows require 19 dark blue in color, the next two rows 42 pure white, and the last two rows 66 dark red.

We will furnish the entire 127 bulbs for this Patriotic bed, delivered to any express office in the United States, for **\$6.00**

Half-Dollar Collection

For House or Out-of-Door Culture

A most desirable and favorite collection; will give universal satisfaction.

- 6 Hyacinths—2 Red, 2 White, 2 Blue.
- 10 Tulips—Single early, choice mixed.
- 3 Narcissus—Double.
- 21 Crocus—All colors mixed

40 Choice Bulbs, postpaid for 50 cents.

Pan-American Collection

This collection is for outdoor culture, and each variety is well known as a universal favorite. Their ease of culture combined with beauty of form and color make them the most popular flowers for fall planting and spring blooming. Our display on the Pan-American grounds in the spring of 1901 from the collection planted the previous fall verifies this statement.

- 2 *Lilium longiflorum*.
- 2 *Lilium incomparabile*.
- 12 Hyacinths—Single and double—Red, White, and Blue.
- 25 Tulips—Single Early, Superfine Mixture.
- 6 Narcissus, Double Van Sion—True Daffodil.
- 12 Narcissus Poeticus—The Poet's Flower.
- 6 Narcissus Princeps—Large Yellow Trumpet.
- 35 Crocus—All colors, in fine mixture.

100 Choice Bulbs, postpaid for \$2.00.

We prepay the postage or express charges on these Collections.

PREMIUMS AND OFFERS TO CLUBS.

Where Bulbs and Plants are not ordered in special low-priced collections

| | | | |
|-----------------|----------------|--|----------------|
| Persons sending | \$ 1.00 | may select Bulbs, Plants or Seeds to the amount of | \$ 1.10 |
| Persons sending | 2.00 | may select Bulbs, Plants or Seeds to the amount of | 2.25 |
| Persons sending | 3.00 | may select Bulbs, Plants or Seeds to the amount of | 3.45 |
| Persons sending | 4.00 | may select Bulbs, Plants or Seeds to the amount of | 4.60 |
| Persons sending | 5.00 | may select Bulbs, Plants or Seeds to the amount of | 5.75 |
| Persons sending | 6.00 | may select Bulbs, Plants or Seeds to the amount of | 6.90 |
| Persons sending | 7.00 | may select Bulbs, Plants or Seeds to the amount of | 8.05 |
| Persons sending | 8.00 | may select Bulbs, Plants or Seeds to the amount of | 9.20 |
| Persons sending | 9.00 | may select Bulbs, Plants or Seeds to the amount of | 10.35 |
| Persons sending | 10.00 | may select Bulbs, Plants or Seeds to the amount of | 11.50 |
| Persons sending | 12.00 | may select Bulbs, Plants or Seeds to the amount of | 13.85 |
| Persons sending | 15.00 | may select Bulbs, Plants or Seeds to the amount of | 17.50 |
| Persons sending | 20.00 | may select Bulbs, Plants or Seeds to the amount of | 23.50 |
| Persons sending | 25.00 | may select Bulbs, Plants or Seeds to the amount of | 29.50 |

The Bulbs, Plants or Seeds selected will be sent to one address, or in separate packages to different members of a club.

SUGGESTIONS TO ALL WHO BUY.

We will send Seeds, Bulbs and Plants, by mail, to any part of the United States, and countries where we can send by Parcel Post, at prices named in this Catalogue, postage paid.

ALL SEEDS, BULBS AND PLANTS SENT PREPAID.

The only exceptions to this rule are *in cases especially noted*. Persons living at the most distant parts of the country will no longer be compelled to buy poor goods or none, but can send their orders with the money, and in a few days the articles will arrive in good order at their post office, or express office, where they can be obtained without further cost, as every package, except where noted, will be *paid through to destination*. Our customers will oblige us very much by giving their nearest Express office and name of the company delivering goods, as it is often better to ship heavy goods by express. We guarantee the safe arrival of packages of Seeds, Bulbs and Plants in good condition. Whenever writing in reference to previous order, be sure to mention the post office to which goods were to be shipped, and sign the same name as in first order. When customers fail to receive their Seeds, Bulbs or Plants in a reasonable time, they should inform us, and also send a copy of their order, stating the amount of money, and in what manner it was sent. No goods sent C. O. D.

HOW TO SEND MONEY.

ALL MONEY MAY BE SENT AT OUR RISK AND EXPENSE if forwarded according to directions in either manner here stated. Please send money with the order.

When remittances are not made according to the following directions we disclaim all responsibility.

1—Post Office Money Order. If your Post Office is a Money Order office, send a money order, which will cost as follows: Sums not exceeding \$2.50, 3 cents; over \$2.50 and not exceeding \$5.00, 5 cents; over \$5.00 and not exceeding \$10.00, 8 cents. This is the best way, and we advise our friends, when possible, to send a P. O. Money Order.

2—Express Money Order. Express Money Orders, to be obtained at all offices of the American, United States, Adams, Pacific, National, Wells, Fargo & Co, and other Express companies.

3—Draft on New York. A Draft on New York can be obtained at any Bank, and this is sure to come correctly.

4—Registered Letter. When money cannot be sent by either of the first three methods, it may be sent in a Registered Letter. The cost of registering is eight cents.

The expense of forwarding money in either of the above ways we will pay, and the cost may be deducted from the amount forwarded.

CHECKS—When individual checks are sent please add 15 cts. to cover cost of collection at the Bank.

DON'T FORGET TO WRITE YOUR NAME, POST OFFICE AND STATE.

We will send VICK'S GARDEN AND FLORAL GUIDE for 1903 free to all customers of 1902; to others it will be mailed free upon application. If any customer fails to receive a GUIDE before February, 1903, please send us a postal card stating the fact, with name and post office.

PAPER FLOWER POTS, Light and Waterproof.

We have tested these pots for several years and found them reliable. We have grown Hyacinths, Tulips and Lilies in them two winters in succession. After using the pots for Hyacinths one winter, we planted Chrysanthemums in them in the spring, and plunged them in the ground, where they remained all summer. In the fall the pots were strong enough to be lifted and allow the plants to be shifted into other pots without disturbing the roots.

| | | | | | | | | | |
|---------|----------|------------|----------|----------|---|--------|----------|-------------|--------------|
| 3½ inch | 25 cents | per dozen, | by mail, | prepaid. | | \$1.00 | per 100, | by express, | not prepaid. |
| 4 | " 35 | " | " | " | " | 1.35 | " | " | " |
| 5 | " 45 | " | " | " | " | 2.00 | " | " | " |
| 6 | " 55 | " | " | " | " | 2.60 | " | " | " |

LARGE FLOWERING
TRUMPET NARCISSUS

PRICE EACH 8¢
DOZEN 80¢
HUNDRED \$5.00

SEE PAGE 10.



JAMES VICK'S SONS
191 MAIN ST., EAST
ROCHESTER,
N. Y.