

- 2 TO 2 -

Miss Caroline R. Straus

SAINT LOUIS MO.

ARRIE AND
BALLAD

WORDS BY

W. W. FISCHICK.

MUSIC BY

JANE EYRE.

37

SAINT LOUIS

Published by Kunkel Brothers, No 19 N Fifth St
Manufacture Music Store

Exhibition and Parlor Pieces by great Composers.

HOME! SWEET HOME! (Variations.)

By CLAUDE MELNOTTE. 73 etc.

Theme. *With taste and expression.*

Far. 1. The melody well marked. *f* sustain the best notes and lift up grace notes. &c.

Far. 2. *pp* *Ses - - -*

Far. 3. *Fine*. *Ses*

ff *With brilliancy.* &c.

This is considered by all who have heard it, the best and most beautiful "Home! Sweet Home!" published.

CAPTAIN JINKS. (Thalberg's celebrated Variations.)

THALBERG. 73 etc.

Theme. *ff* *Very bold.* &c.

Far. 1. *With brilliance and spirit.* *ff*

Far. 2. *ff* *Ses*

Far. 3. *Fine*. *Ses*

Grotesq *ped.* *ff* *With brilliancy.* &c.

This composition has been played with the greatest success by the leading Pianists in America and Europe at their concerts.

VISITATION CONVENT BELLS

JACOB KUNDEL. 50 etc.

pp *With expression.* *Ses*

ped. *pp* *Ses*

ped. *pp* *Ses*

ped. *pp* *Ses*

ped. *pp* *Ses*

ped. *pp* *Ses*

ped. *pp* *Ses*

ped. *pp* *Ses*

ped. *pp* *Ses*

One of the most beautiful Reveries ever composed, which needs no other comments but to be heard.

PITAPAT. (Concert Piece by Thalberg.)

THALBERG. 73 etc.

f *In a lively style.*

ped. *ff* *Very characteristic, and a splendid piece for rhythmic.*

If not obtainable at the nearest Music Store, send orders to KUNDEL BROS., Mammoth Music Store, St. Louis, Mo., who will send the same on receipt of price, free of charge, to any address.

CARRIE AND I.

(Ballad)

Jane Eyre.

With feeling.

mf

Ped. *Ped. *Ped. *Ped. *Ped. *Ped. *Ped. *

The piano introduction is in 4/4 time, marked *mf*. It features a melody in the right hand and a harmonic accompaniment in the left hand. The piece is divided into eight measures, each ending with a pedaling instruction: Ped., *Ped., *Ped., *Ped., *Ped., *Ped., *Ped., and *. The melody includes various ornaments such as trills and grace notes.

a. The wild witch hazle brake was green, No eye could pierce our leaf-y screen,

The vocal line for the first line of lyrics is in 4/4 time. It consists of two phrases: "The wild witch hazle brake was green," followed by a rest, and "No eye could pierce our leaf-y screen," followed by a rest.

1. In the wild witch hazle brake, By the sil-ver sanded lake,
2. Upon the ground her eyes were set, Pluck-ing at a vi-o-let,

The piano accompaniment for the first line of lyrics consists of two staves. The right hand plays a steady eighth-note accompaniment, while the left hand plays a simple harmonic accompaniment.

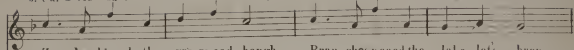
a. And not an-o-ther soul hath seen, The name-less joy we bless.

The vocal line for the second line of lyrics is in 4/4 time. It consists of two phrases: "And not an-o-ther soul hath seen," followed by a rest, and "The name-less joy we bless," followed by a rest.

1. Where the white leav'd aspens shake, I with Car-rie roved.
2. Which her dew-y tears had wet, While her cheek was flush.

The piano accompaniment for the second line of lyrics consists of two staves. The right hand plays a steady eighth-note accompaniment, while the left hand plays a simple harmonic accompaniment.

1. Car - rie said I then be mine, Let us thus for - e - ver twine,



1. Ze - phyr kissed the greenwood bough, Bran - ches wooed the lake - let's brow,
2. With a kiss that tear I chased, And a - round her slen - der waist,



a. And she smiled, Oh! bliss di - vine! Smiled and whis - - pered, whispered yes!



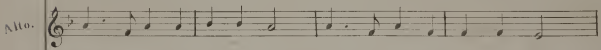
1. And I kissed, I know not how | Her I dear - - ly, dear - ly loved.
2. Ten - der - ly my arm I laced, She did nought, did nought but blush.



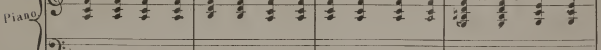
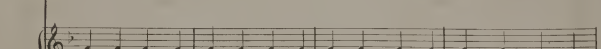
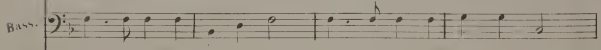
Chorus ad lib:



Air. Ze - phyr kissed the greenwood bough, Bran - ches wooed the lake - let's brow,



Tenor. Ze - phyr kissed the greenwood bough, Bran - ches wooed the lake - let's brow,



And I kissed, I know not how! Her I dear - - ly, dearly loved.

And I kissed, I know not how! Her I dear - - ly, dearly loved.

The first system consists of four staves. The top two staves are vocal lines with lyrics. The third staff is a bass line. The bottom two staves are piano accompaniment, with the right hand playing chords and the left hand playing a bass line.

mf

Ped. * Ped. * Ped. * Ped. *

Ped. * Ped. * Ped. * Ped. *

The second system consists of two staves of piano accompaniment. The top staff has a dynamic marking of *mf*. The bottom staff has performance markings including 'Ped.' and asterisks. The music features chords and melodic lines in both hands.

