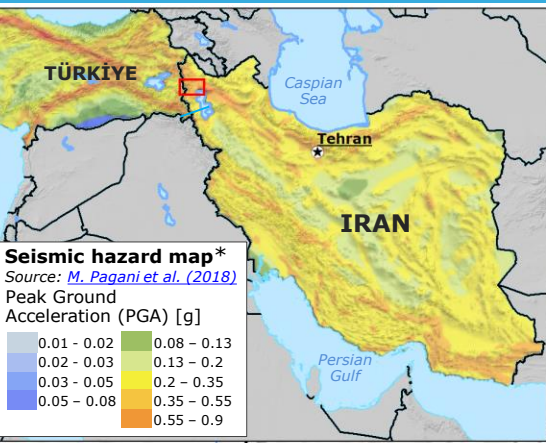
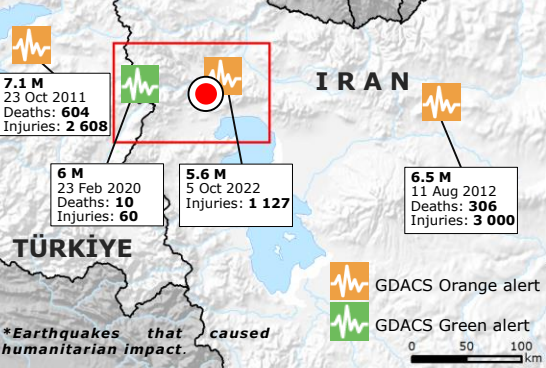


Iran | 5.8 M Earthquake of 18 January



SIGNIFICANT* EARTHQUAKES OVER THE PAST 20 YEARS, IN NORTH-WESTERN IRAN AND CLOSE TO THE BORDER WITH TÜRKIYE.
Source: *NGDC-NOAA*



Earthquakes (EQs)

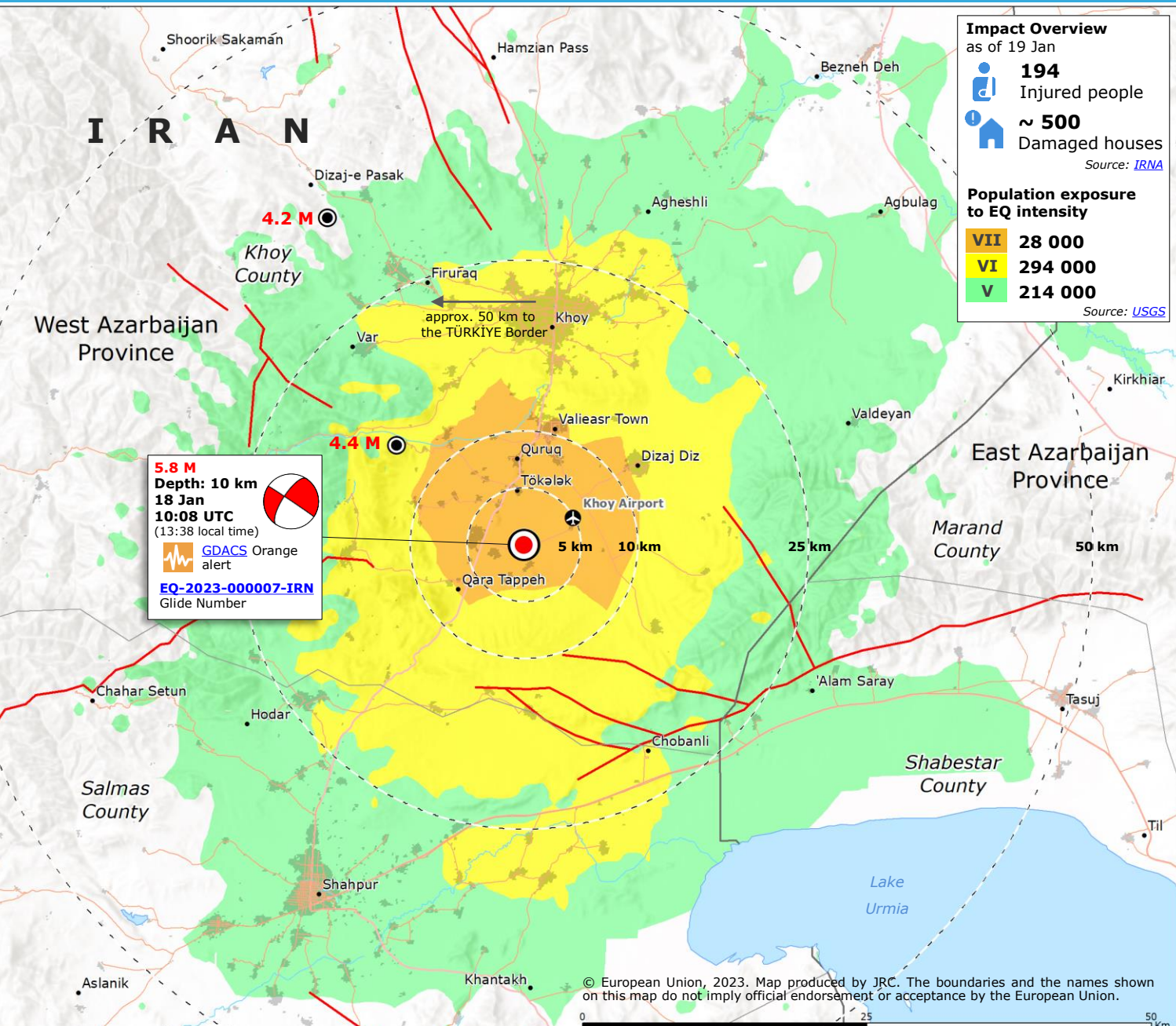
- 5.8 M event
Source: *GDACS, USGS*
- Aftershock on 18-19 Jan
Source: *USGS #1, #2*
- Focal mechanism
Source: *USGS*

Modified Mercalli Scale intensity (MMI)

- VII (Very strong shaking)
- VI (Strong shaking)
- V (Moderate shaking)

- GDACS Orange alert
Potential local disaster, international assistance might be required
- Faults
Source: *USGS*
- Built-up area
Source: *JRC GHSL 2022*
- Main Road
- Main airport
- County limit
- Province boundary

*The Seismic Hazard Map depicts Peak Ground Acceleration with a 10% chance of exceedance in 50 years, corresponding to a return period of 475 years.



Impact Overview
as of 19 Jan

- 194** Injured people
- ~ 500** Damaged houses
Source: *IRNA*

Population exposure to EQ intensity

VII	28 000
VI	294 000
V	214 000

Source: *USGS*