

GHQ/SCAP Records (RG 331, National Archives and Records Service)

Description of contents

- (1) Box no. 2895
- (2) Folder title/number: (10)
Kubota Iron & Machinery Works Ltd. - Chuko Plant
and Okajima Plant
- (3) Date: Oct. 1946 - Nov. 1946
- (4) Subject:
- | Classification | Type of record |
|----------------|----------------|
| 9230, 9621 | c, e |
- (5) Item description and comment:
i) Osaka
ii) Includes Contents List
- (6) Reproduction: Yes No
- (7) Film no. Sheet no.

(Compiled by *National Diet Library*)

Index

Incoming Correspondences

No.	Date	Subject	Remarks
00041	4 Oct. 46	Petition for exemption of factory designated for custody and conservation for reparations purposes.	
00045	"	Report on custody and Administration of reparation facilities	
00045	5 Oct. 46	" " " "	
	9 Oct. 46	Report on custody and administration of reparation facilities	
00434	21 Oct 46	Monthly Prod Report - Sept	
00432	21 Oct 46	" "	
00433	"	"	
00130	24 Oct 46	Supplement of applications for exemption of the Kubota Iron & Machinery Works, Sakai and Okajima Plant from OD-5 List	
566	4 Nov 46	Reparations Inspection	
586	29 Oct 46	Request for Removal of Okajima Plant of Kubota Tekkosho from Reparations List	
905	26 Nov 46	Monthly production report for Oct	
904	26 Nov 46	"	
903	26 Nov 46	"	
586	29 Oct 46	Request for Removal of Okajima Plant of Kubota Tekkosho from Reparations List	

IMPERIAL JAPANESE GOVERNMENT
CENTRAL LIAISON OFFICE

TO : HEADQUARTERS, OSAKA MILITARY GOVERNMENT TEAM.
FROM : Central Liaison Office, Tokyo.
SUBJECT : Request for Removal of Okajima Plant of Kubota
Tekkosho from Reparations List.

C.L.O. No. 516(ECI-F)

29 October 1946

1. Reference: SCAP Memorandum AG 387.6(13 Aug 46)ESS/IN (SCAPIN-1134), subject: "Reparations Selections Within Privately-Owned Munitions Plant."
2. The Central Liaison Office submits herewith an application of the Ministry of Commerce and Industry on the subject matter.
3. As is stated in detail in the above application, the subject plant has never been engaged in munitions production during the war, and, therefore, it is requested that favorable consideration be accorded by your Headquarters for the removal of the subject plant from the Reparations List.

FOR THE PRESIDENT:

K. Asakat
(K. ASAKAT)

Director of General Affairs,
Central Liaison Office.

Enclosure: An application of the Ministry of Commerce and Industry, accompanied by an explanatory note on the subject plant.

OSAKA M.G
RES-COM-IND
FILE 586

Code 32-53

Incl 1'

TO : Headquarters Osaka Military Government *Team*

FROM : Adjustment Division,
Ministry of Commerce and Industry

SUBJECT: Application for Exemption from Designation of
Reparation Control to Kabushiki Kaisha Kubota, Tekkosho,
Okajima Kojo. (Kubota Iron & Machinery Works. Ltd.,
Okajima Plant) as privately-owned munitions plants

1. In regards to those plants as designated for control as privately-owned munitions plants in the directive dated 13 August 1946, we have taken and are also taking actions necessary to assure its satisfactory control and custody, in close connection with organs concerned civil and official.
2. However, Kabushiki Kaisha Kubota Tekkosho, Okajima Kojo. (Kubota Iron & Machinery Works. Ltd., Okajima Plant) is desired to be exempted from the designation for control as well as to be the object of reparation in future after your review on the detailed explanation (annexed paper) due to the fact that this company was not considered to have participated in the munitions production during war.

T. Wada

Director of Adjustment Division,
Ministry of Commerce and Industry.

Incl 2¹

- A. Name of Company: Kubota Iron & Machinery Works. Ltd.
- B. Name of Plant: Okajima Plant
- C. Location of Company & Plant:
- Location of Company: 22, 2-chome, Funade-cho, Naniwa-ku, Osaka City
- Location of Plant: 1, Minamiokajima-cho, Taisho-ku, Osaka City
- D. Date of establishment and operation of the above:
- a. Date of establishment of the Company: February 1890
- b. Date of operation of the Plant: August 6, 1917
- c. Permission of conversion from wartime compulsory production to normal production.
1. Date of permission June 10, 1946
2. Number of permission IG - 369
- E. History of the Plant:

(a) Before the War

1. This plant commenced the operation in August 1917 for the production of cast iron pipe fittings for water and gas works.
2. Since then factory enlarged the plant year by year till 1935 when a well equipped cast iron foundry shop as to-day was accomplished. And has been producing following articles.
 - (1) Cast iron pipe fittings for water and gas works.
 - (2) Castings for chemical machineries for fertilizer industry, gas producer, portland cement kiln and etc.
 - (3) Castings for engines for farm and fishing use.
 - (4) Castings for scales.
 - (5) Castings for stokers and fuel economizers.
 - (6) Ingot case for steel works.
 - (7) Castings for general use and alloy castings.

(E. History of the Plant Cont'd)**(b) In Wartime**

1. In wartime the factory continued the production of same articles as before the war.
2. The production declined seriously in March 1945 owing to the war disasters inflicted on the office buildings and some other equipments.

(c) After the War

After the war, the factory have continued the job without interruption and have already come back to the pre-war status. According to the special feature of this factory as the peaceful and civilian industry, the factory is best efforts for an increased production of the following articles along the line of the promotion of the production of foodstuffs and national welfare.

- (1) Castings for chemical machineries, special heat, acid and alkali proof castings, including castings for stoker and fuel economizers, for scales and for general uses.
- (2) Castings for engines for farm and fishing uses and for reclamation tractors.
- (3) Alloy castings for bearing metals of engines and various alloy cast construction.

F. List of Article and quantity (annual out-put)

from 1934 to 1936

Description	1934	1935	1936
Casting for chemical machinery	1547t	1485t	1748t
Casting for engines	930t	682t	1218t
Cast iron pipe fittings	1627t	4230t	3825t
Ingot cases			1023t
Casting for scales	556t	678t	635t
General castings (Casting for stokers & etc.)	1359t	2121t	3188t

G. List of Article and Quantity
from 1937 to 1945

Description	1937	1938	1939	1940	1941	1942	1943	1944	1945
Casting for chemical mch	3425	2006	4627	4722	4726	4355	6752	2885	607
Ingot cases	9950	14626	8361	7084	10208	17711	10020	2636	A
Cast iron pipe fittings	5264	3560	1933	1728	2236	1618	2172	315	A
Casting for scales	752	250	240	282	458	526	279	I	I
Casting for engines	2473	724	1102	2958	2345	2584	3430	3555	670
General castings	500	860	2154	1165	1789	1290	808	1111	201
Soil pipes & fittings				110	264	106	618	I	I
Segment for Kammon tunnel			5124	5190	2275	2183	3319		
Casting for semi-diesel							1554	1505	
Alloy castings				F	40	390	543	355	87

Remarks :

- A. Afterwards, the production transferred to ~~the~~ Amagasaki Factory.
- I. The production transferred to ~~the~~ Ichioka Plant which was burnt down by air-raids in 1945.
- F. Succeeded the production made in Funademachi Plant.

- H. Items of products and their quantities produced after the war.
- (a) List of articles and quantities produced after the permission for reconversion granted (quarterly)

Permission for reconversion Date 10 June 1946 No. IG-369

Articles	1946			
	Month	Jan-Mar	Apr-June	July-Sept. figure for Sept. is an estimated
Casting for chemical mch		140t	334t	499.6t
Casting for engines		136t	332t	484.3t
Alloy castings		10t	25.6t	34.5t
Casting for stokers			3t	4.9t
Casting for scales			4t	40.8t

(H. Items of products and their quantities produced after the war Cont'd)

(b) Production project for the future (monthly)

Casting for chemical machinery	300 tons
Casting for engines	250 tons
Alloy castings	20 tons

Remarks: 1. Castings for chemical machines for fertilizer production gas generation, portland cement kiln and etc., including those for scales, stokers and general uses.

2. Castings for engines for tractors and farm & fishing use.

3. Alloy castings for engines and general uses.

I. Outline of buildings and equipments

(a) Buildings

1. Buildings and items of products made therein

<u>Building No.</u>	<u>Kinds of products</u>
1.	Casting for scales
2.	Casting for engines
3.	Chemical machines: Acid, heat and alkali proof castings
4.	Casting for engines
5.	Casting's cleaning shed
6.	Casting for engines
7.	Finished products store house
8.	Casting for chemical machinery.
9.	Alloy castings
10.	Pattern shop
11.	Repair shop
12.	Carpenter shop
13.	Material stockhouse
14.	Chrome pipe finishing shop
15.	Chemical machine finishing shop

Remarks: As shown in attached plan, the stoker shop and scale shop of the Kubota Iron & Machinery Works are located adjacent. We have shown them with shaded portion for the sake of reference.

(I. Outline of buildings and equipment Cont'd)

(a) 1. Remarks:

<u>Building No.</u>	<u>Kinds of products</u>	<u>Remarks</u>
Sho 1	Stokers	The stoker shop of Kubota Iron & Mach. Wks. Ltd.
Ko 1	Scales	The scale shop of Kubota Iron & Mach. Wks. Ltd.
Ko 2	"	" "
Ko 3	Store house of scales	" "

2. Equipment and machines

a. Production equipments

<u>Kinds</u>	<u>Capacity (Metric tons)</u>	<u>Quantity</u>
Cupola furnace	10	1
"	8	1
"	5	1
"	4	1
"	3	5
"	1	1
Total:		10

b. Subsidiary equipments

Transformers	15
Electric motors	385
Air compressors	5
Cranes	67
Crucible furnaces	1
Generators (0-5KW)	1
Boilers	2

Remarks: In the above mentioned stoker and scale shops which lie adjacent to the plant there are 6 cranes and 64 electric motors.

(I. Outline of building and equipments Cont'd)

(a) 2.

c. Machines

<u>Kinds</u>	<u>Made in Japan</u>	<u>in abroad</u>	<u>Total</u>
Horizontal lathee without Ls	47	0	47
Radial drilling machine	7	0	7
Boring machines	11	0	11
Vertical boring machines	2	0	2
Planing machines	8	0	8
Shaping machines	3	0	3
Slotting machines	1	0	1
Tool grinding machines	2	0	2

Remarks: 1. These are adopted to chemical machines & for repairing purposes.

2. The stoker & scale shop which lie adjacent to the above plant have the following equipment.

<u>Kinds</u>	<u>quantity</u>
Horizontal lathes without lead screw	25
Radial drilling machines	3
Boring machines	1
Vertical boring machines	1
Planing machine	4
Shaping machines	5
Slotting machines	2
Milling machines	2

These latter machines have been reported enbloc with those of the Okajima Plant in the application 26E which was submitted in March 1940. (Please see explanatory note attached hereto in the end)

(b) Those which have becomes useless after the war

None

J. The proportion of monthly output clarified by kinds of main products to that of the whole country (As of Aug. 21, 1940.)

Kind of products	Quantity of monthly production		
	The whole country	This plant	Proport.
Casting for chemical machines (Acid, heat & alkali resist)	351 metric ton	158 metric ton	45% ⁶
Casting for engines (Agriculture use)	260 "	143 "	55% ⁶

K. The reason for retention of the factory:

(a) The plant has been designated for custody and administration for the reparation as one of the private munition factories, however, the plant has never produced anything related to aeroplanes nor armaments even in the war time, but continued the production of civilian commodities through pre-war, war and post-war periods.

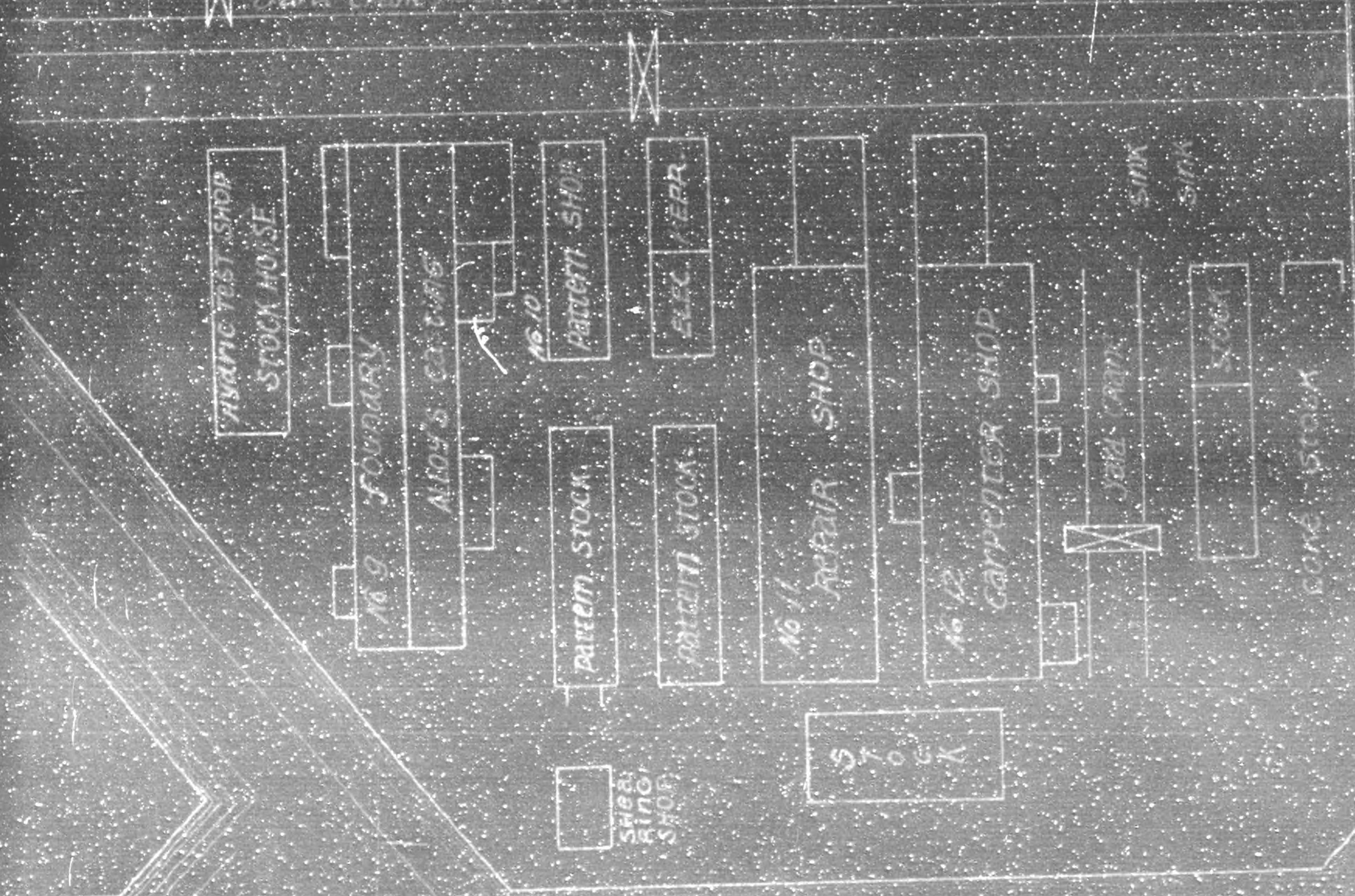
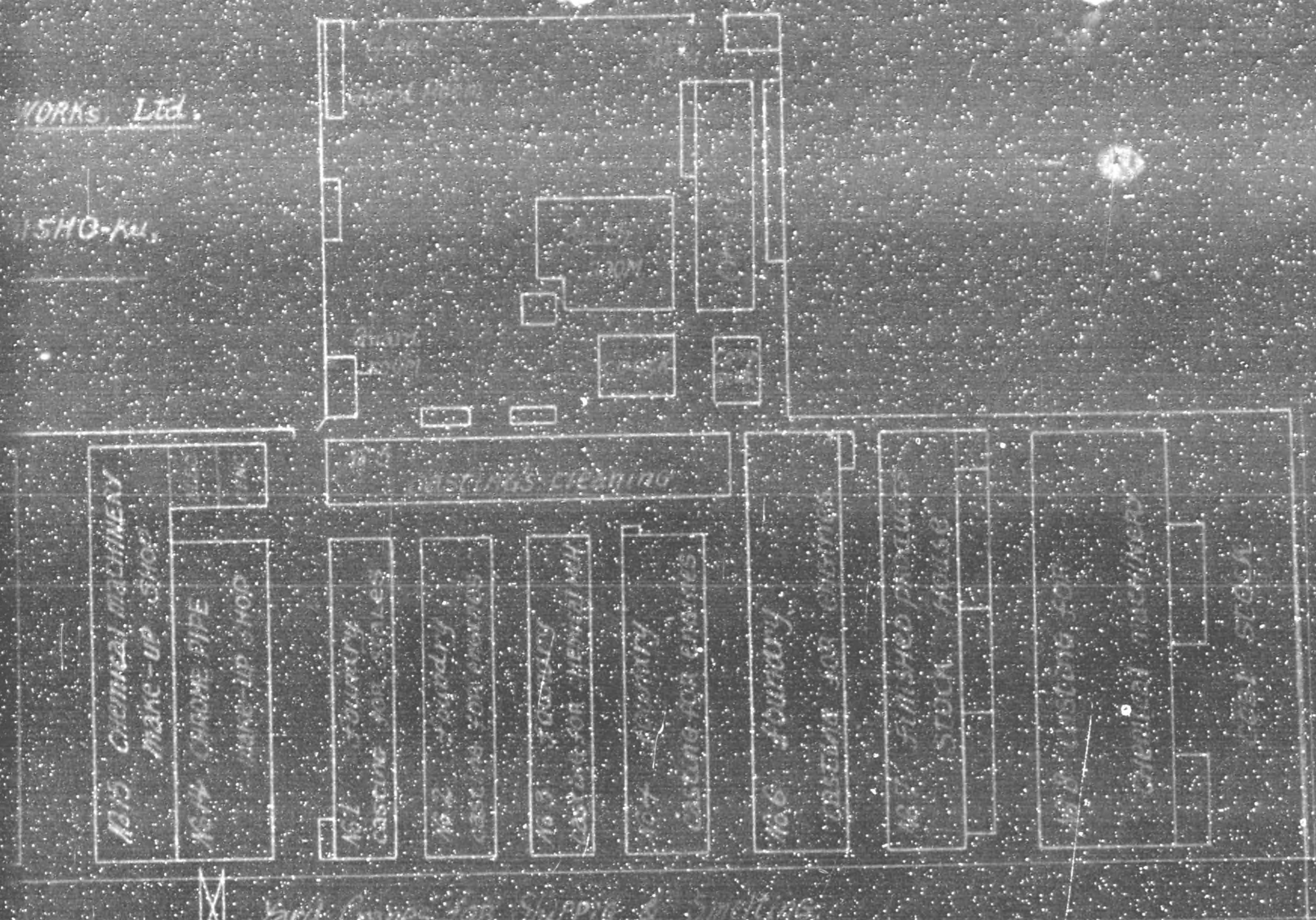
(b) The plant has not accomplished any additional equipments in the war time but almost all equipments has been completed until pre-war time from the first operation in 1917, furthermore, the factory had remarkable increase of production on same lines, in the war time, however, such has no relation to the munitions or armaments.

(c) The plant has produced the castings for chemical machineries and those of oil engines for farm use to the extent of 45 percent and 55 percent of the whole domestic production respectively. In addition to the big production capacity of the plant, mentioned above, the excellent techniques and skillful experiences make it indispensable from the national view point. The chrome pipes which are one of the casting articles for chemical machinery, are cordinal to the chemical fertilizer production, are solely made from the plant. It may cause worse influences on the progress of production of chemical fertilizer and agricultural development, if the plant happened to be withdrawn for reparation purposes.

It is desirable to retain the plant as the maker of civilian commodities of the chemical fertilizer.

WORKS, Ltd.

15HO-KW.



canal

canal

MONTHLY PRODUCTION REPORT

(During October)

Date: Lo November 1946

To: Osaka Military Government Team

Thru: Osaka Prefectural Government

Description

- 1, Name Kubota Iron & Machinery Works, Ltd.,
Chuko Plant.
- 2, Location 1, Minamiokajima-cho, Taisho-ku, Osaka.
- 3, Permitted No. & Date IG - 371 10 June 1946
- 4, Permitted articles & Capacity
Cast steel for tractor & Carriage 120 tons
- 5, Production

<u>Articles</u>	<u>Weight</u>	<u>Prices</u>
Cast steel for tractor & Carriage	50.357T	1,007,140.10
Other cast steel parts	24.775T	310,180.00

6. Remarks

Signed

C. Kubota.
Gonshiro Kubota, President.

OSAKA M.G.
RES-COM-IND
FILE 903

MONTHLY PRODUCTION REPORT

(During October)

Date: 10 October 1946

To: Osaka Military Government Team

Thru: Osaka Prefectural Government.

Description

1. Name Kubota Iron & Machinery Works, Ltd.,
Okajima Plant
2. Location 1, Minamiokajima-cho, Taisho-ku, Osaka.
3. Permitted No. & Date IG - 369 10 June 1946
4. Permitted articles & Capacity

(1)	Casting for chemical machines	300 T
(2)	Casting for engines & accessories	250 T
(3)	Alloy castings	20 T
(4)	Casting for scales	20 T

5. Production

<u>Articles</u>	<u>weight</u>	<u>Prices</u>
(1) Casting for chemical machine	178.592T	1,801,994.64
(2) Casting for engines	157.833T	1,614,647.23
(3) Alloy castings	15.228T	390,492.45
(4) Casing for scales	42.849T	345,578.64

6. Remarks

Signed

G. Kubota
Gonshiro Kubota, President.

OSAKA M. G.
RES-COM-IND
FILE 905

MONTHLY PRODUCTION REPORT

(During October)

Date: Lo November 1946

To: Osaka Military Government Team

Thru: Osaka Prefectural Government

Description

1. Name Kubota Iron & Machinery Works, Ltd.,
Stoker & Scale Plant (in Okajima Plant)
2. Location 1, Minamiokejima-cho, Taisho-ku, Osaka.
3. Permit No. & Date IG - 369 10 June 1946
4. Permitted articles & capacity (monthly)

Stoker & Fuel economizers with conveyer	50 sets
Small scales	250 sets
(this capacity contained in Fuse Plant IG370)	

5. Production

<u>Articles</u>	<u>Pieces</u>	<u>Prices</u>
Plane type fuel economizer	1	35,225.00
Type "B" Stokers	1 $\frac{1}{2}$	270,000.00
Special scales	4	289,500.00
parts for stokers	1	3,033.00

6. Remarks

Signed

G. Kubota
Gonshiro Kubota, President.

OSAKA M.G RES-COM-IND FILE 904

FILE 0

TO : HEADQUARTERS, OSAKA MILITARY GOVERNMENT TEAM.
FROM : Central Liaison Office, Tokyo.
SUBJECT : Request for Removal of Okajima Plant of Kubota
 Tekkosho from Reparations List.

C.L.O. No. 516(BCI-F)

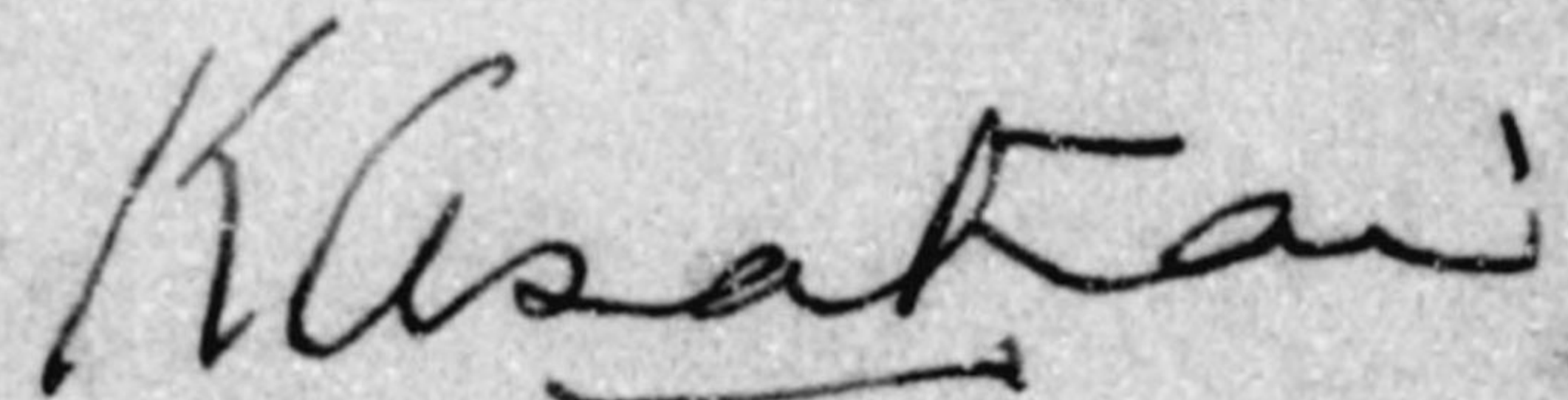
29 October 1946

1. Reference: SCAP Memorandum AG 387.6(13 Aug 46)ESS/IN
 (SCAPIN-1134), subject: "Reparations Selections Within Pri-
 vately-Owned Munitions Plant."

2. The Central Liaison Office submits herewith an application
 of the Ministry of Commerce and Industry on the subject matter.

3. As is stated in detail in the above application, the subject
 plant has never been engaged in munitions production during the
 war, and, therefore, it is requested that favorable consideration
 be accorded by your Headquarters for the removal of the subject
 plant from the Reparations List.

FOR THE PRESIDENT:



(K. ASAKAI)

 Director of General Affairs,
 Central Liaison Office.

Enclosure: An application of the Ministry of Commerce and
 Industry, accompanied by an explanatory note on
 the subject plant.

OSAKA M.G RES-COM-IND FILE 586

REPARATIONS INSPECTION

Report Number

21 October 1946
Date

1. Name of plant Kubota Iron & Machinery Works, Ltd., Okajima Plant.

2. Address 1, Minamiokejima-cho, Taisho-ku, Osaka.

3. Name of President or Manager Gonshiro Kubota (President)

4. Capitalization ¥42,750,000.00 (Paid-up)

5. Number of employees

	<u>Male</u>	<u>Female</u>	<u>Total</u>	<u>Attend rate</u>
Clerical staffs:	69	17	86	
Workers :	700	68	768	
Total :	769	85	854	

6. Number and type of machines

Production equipments (Cupola furnace) 10
 Subsidiary equipment 476
 Machine tools 96 Total 582

7. Condition and maintenance of machines 81 ... Okajima Plant own.
15 ... borrowed from our Funadomachi Plant.
 Repaired 87 %

8. Present use of machines Working 78.5 %

9. Ownership of machines Own 100 %

10. Has reconversion application been made? Yes

11. Has reconversion permit been granted? Permitted on 10 June 1946

Permit No. IG-369

12. Present operating authority None

13. Are monthly production reports being submitted?
Presented every month

14. Average prewar monthly production
 to next page -----

OSAKA M.G
 RES-COM-IND
 FILE 586

15. Average wartime monthly production

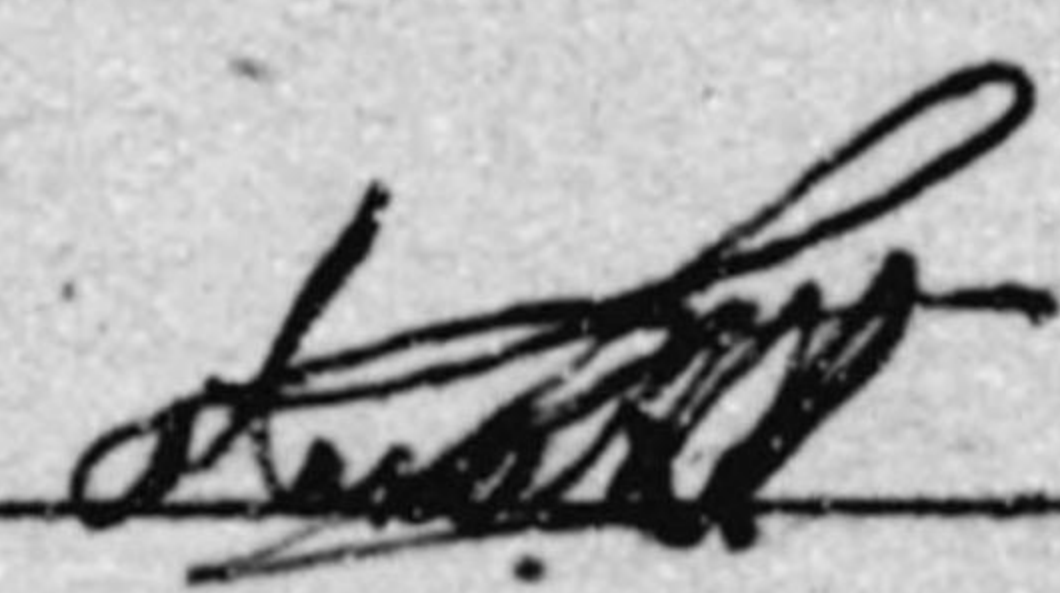
16. Average present monthly production

Production	(14)		(15)		(16)	
	pre-wartime Ton	Yen	in wartime Ton	Yen	after wartime Ton	Yen
Casting for chemical machinery	145.6	21,850	364	301,080	180.9	1,553,906
Casting for engines	101.6	18,285	215	193,166	120.8	1,191,226
Cast iron pipe fit.	318.7	38,250	134	41,666		
Casting for scales	53.1	7,975	43	17,533	31.8	268,623
General castings	265.6	42,507	107	50,000		
Segment	0	0	182	208,330		
Soil pipes & Fit.			8	2,083		
Alloy castings	0	0	32	41,666	16.7	432,073
Casting for stokers	0	0	0	0		
Ingot cases	85.2	8,184	1476	666,666		
Total	969.2	137,051	2565	1523,190	350.2	3,445,869

17. Remarks:

Signed _____

Title _____



A Okajima Plant own

B Machinery borrowed from our Funademachi Plant which burnt down and repaired.

Description	A	B	Total
Production equipment			
Cupola furnace	10		10
Subsidiary equipment			
Transformers	15		15
Motors	385		385
Air compressors	5		5
Cranes	67		67
Crucible furnace	1		1
Electric generator	1		1
Boilers for bath room	2		2
Machine Tools			
Horizontal lathes	50	7	57
Milling Machines		2	2
Drilling Machines (Radial Boring)	7		7
" (Upright Boring)	2	2	4
Boring Machine (Horizontal)	7		7
" (Turning Mills)	1		1
Planers	8	1	9
Shapers	3	2	5
Slotters	1		1
Tool Grinding Machine	2	1	3
Total			582

M 12

REPARATIONS PLANT OI-1/2 INSPECTION REPORT

FACTORY NAME: Kubota Tekkosho K.K. Okajima Plant

LOCATION: 1-chome, Minamiokajima-cho, Taisho-ku, Osaka.

I. COMPLIANCE WITH OI-1/2:

- (a) Twenty-four hour guard? _____
- (b) All entrances posted? _____
- (c) Unnecessary entrances sealed? _____
- (d) Official Custodian designated? _____
- (e) Dispersed machinery called in? _____
- (f) REMARKS: (Extent of Compliance with OI-1/2)

II. GENERAL CONDITION OF MACHINERY: _____

- (a) Performance of protective maintenance _____
- (b) Condition of housing _____
- (c) REMARKS: _____

III. OPERATION OF PLANT:

- (a) Plant (is) (is not) operating under reconversion permit No. _____
- (b) 1G-371 dated 10 June 46 installation (should) (should not) be allowed to continue operation and reconversion activities.

IV. ADDITIONAL INFORMATION:

Date inspected _____ Inspector _____

MACHINE INSPECTION

Report Number _____

Date 7.9

1. Name of plant Kobata Iron and Machine Works, Ltd. of Kajima Plant
2. Address No. 22, 2-chome, Yamanashi-cho, Nanyo-ku, Shinjuku-ku, Tokyo 054
3. Name of President or Manager Jo. Michio Kobata
4. Capitalization Authorized capital ¥65,000,000 paid up ~~¥42,750,000~~
¥42,750,000
5. Number of employees 1326
6. Number and type of machines machines total 81 sets
production machines, 10 sets subsidiary machines 71 sets
7. Condition and maintenance of machines _____
working 75%
repairing 25%
8. Present use of machines 50%

(OVER)

9. Ownership of machines all machines belong to plant

10. Has reconversion application been made? _____

yes,

11. Has reconversion permit been granted? _____

yes date to 9th of Nov 1996 by 1.9.96

12. Present operating authority _____

osaka prefecture authority

13. Are monthly production reports being submitted? _____

yes,

14. Average prewar monthly production.

<u>Items</u>	<u>Quantity</u>	<u>Value</u>
<u>industrial machines</u>	<u>700 sets</u>	<u>¥ 300,000</u>

15. Average wartime monthly production.

<u>Items</u>	<u>Quantity</u>	<u>Value</u>
<u>industrial machines</u>	<u>850 sets</u>	<u>¥ 300,000</u>

16. Average present monthly production.

<u>Items</u>	<u>Quantity</u>	<u>Value</u>
<u>industrial machines</u>	<u>600 sets</u>	<u>¥ 500,000</u>

17. Remarks: _____

Signed S. Ito

Title _____

府政國帝本日大

11th Sept. 1946

From : Director, Kinki Maritime Bureau.
 To : Osaka Military Government Team
 Subject : Supplement of applications for exemption of
 the Kubota Iron & Machinery Works, Sakai
 and Okajima Plant from OD - 5 List.

I hereby make the supplement for Kubota Iron & Mch.
 Wks. Ltd., Sakai and Okajima Plant.

The Sakai Plant is a maker of Oil engines for
 agricultural and marine use, which are indispensable for
 the solution of the present food problem and Okajima Plant
 is a leading maker in this country as engine foundry and is
 casting the body of engines, which to be finished by the
 Sakai Plant.

I fear that the removal of these equipments will give
 a heavy blow on the present agricultural and fishing plan
 of the Government.

It is clear that No Armament and aircraft has never
 been produced by them and the Sakai Plant needs Okajima
 Plant, while on the other hand the Okajima Plant needs
 Sakai Plant also.

BY ORDER OF THE DIRECTOR

Kenzo Okui

KENZO OKUI

Chief

Ship Building Dept.
 Kinki Maritime Bureau

10130

30th Sept. 1946

Okajima Plant

TO : Osaka Military Government Team
(Attn: Maj. Herbert H. Harmon)

FROM : Governor of Osaka Prefecture

SUBJECT: A Petition for Exclusion from the Designation
OD-No.5

Having received a petition for exclusion from the Designation OD No.5, as per accompanying documents, from Okajima Plant, Kubota Iron Works, Ltd., who were designated by your Military Government Team on 24 Aug. 1946, we have made investigations in compliance with the petition, and the result is as under:-

This plant had not been making none of the products and parts concerning aircraft, as well as other munitions during the war.

Moreover, ever since its first operation in 1916, this plant has served a great deal for country as a Casting specialist of various Industrial Machineries, which are quite essential for stability of people's livelihood, viz:- Chemical Machinery (for Fertilizers, Gas-Producers & Cement Mills), Engines (for Agriculture & Fishery), Scales and Stokers (for Coal Supplier and Economiser), each of which is, (by an excellent technique, equipments and conscientious producing plan cultivated by its long experience) excellent in its capacity, and has been produced in a large quantity.

This plant is considered to be quite indispensable for going through the food problem difficulties and reconstruction of civil industry in this country at present, and therefore, your particular assistance and cooperation is hereby cordially begged for, after your perusal on the undermentioned items, so that the said plant be excluded out of the Designation OD No. 5.

In addition the petition by the same plant attached hereto is hereby certified by us to be a true and certain copy of it.

- Cont'd -

- 2 -

1. This plant is a Casting specialist of the following general civil commodities and various industrial machineries essential for stability of civil life, since its first operation in 1916, and, in the war time, the plant had not made any products whatever concerning aircraft and munitions, other than the undermentioned casting products, and consequently the plant is not suitable to be concluded as a munitions plant.

2. The Products ^{of} by this plant:

1. Cast Iron Pipe & Fittings (for Gas & Water Works)
2. Castings for Chemical Machinery (Fertilizers, Gas-producers and Cement Mills).
3. Casting for Engines (Agriculture & Marine use).
4. Castings for Seales.
5. Castings for Stokers (for Stokers, Economizers).
6. Ingot Cases (Steel Works).
7. Miscellaneous Casting (for Engines and Engine Parts for the above mentioned machineries).

2. The Chemical Machineries manufactured by this plant are done through out from Casting and to its finishing, and are placed in No. 1 position showing 45% of total output of this country. Especially, the chrome-pipe is the unique product of this plant and required most earnestly for chemical use, capacity being excellent against heat, acidity and alkalinity, and above all, the plant is most important for increase of fertilizer production at present.

3. The Castings for Engine are completed at the Sakai Plant of this firm and the percentages against the total output of this country are:- Engines for Agriculture 55%, Marine Engine 50%, Air Compressor with 2 HP Oil Engine 100% and 3 ton Gasoline Tractor 30%. Especially Engines for Agriculture, Tractor for Cultivation and Engines for Fishery are essential for getting over the difficulties in food problem at present, and therefore, the increase of these products are most urgently required. Such an excellent plant as this is most ardently needed for carrying out the national policy at the present moment.

4. This plant is also making Castings for Stokers and Economizers which is completed by the adjoining Stoker Workshop, and which has quite suitable capacity and excellent adaptability for heating and economizing fuel. They have an important mission for maintenance and utility in such fields as Spining, Salt Producing, Electric Power, Locomotive and marine use.

5. This plant is also a casting material factory for Seales manufactured in their Fuse Plant and the adjoining Fuse No. 2 Plant, (whose excellent technic and equipments have been brought up since 1924), the production shows nearly half of the total output of this country. As this special products are extensively used in Mining, Electric and Spining Works, as well as Civil requirements in general, this plant is important for reconstruction of industry and stabilization of people's livelihood.

- Cont'd -

- 3 -

6. As above mentioned, the Castings of this plant have a close contact with the products of their sister-factories of the firm; it is not only that the excellent speciality of the products is due to their pre-eminent technic and hard study for a long time, but that each of these products is most essential for increase of Good Stuffs and stability of civil life, and moreover, this plant had not been making any munitions during the war, that your special consideration is cordially begged for.

FOR THE GOVERNOR OF OSAKA PREFECTURE

T. Okumura

Torao Okumura
Head of Industry Sect.,
Osaka Prefectural Government

ENDORSED BY:

A. Kodaki

A. Kodaki
Director-General,
Osaka Liaison Office.

KUBOTA IRON & MACHINERY WORKS LTD.,
22, 2-CHOME FUNADE-CHO, NANIWA-KU,
O S A K A.

September 17, 1946.

TO: Osaka Military Government Team.
SUBJECT: Application for Omission of the Kubota Iron
& Machinery Works, Ltd., Okajima Plant from
OD-5.

With regard to the designation made recently in OD-5
List, it is hereby respectfully requested that recon-
sideration be made on your part for the omission thereof
taking account of the document attached herewith.

Signed

G. Kubota
Gonshiro Kubota, President.

KUBOTA IRON & MACHINERY WORKS LTD.,

22, 2-CHOME FUNADE-CHO, NANIWA-KU,
OSAKA.

(E. History of the Plant Cont'd)

(b) In Wartime

1. In wartime, we continued the production of same articles as before the war.
2. The production declined seriously in March 1945 owing to the war disasters inflicted on the office buildings and some other equipments.

(c) After the War

After the war, we have continued the job without interruption and have already come back to the pre-war status. According to the special feature of this factory as the peaceful and civilian industry, we are now exerting our best efforts for an increased production of the following articles along the line of the promotion of the production of foodstuffs and national welfare.

- (1) Castings for chemical machineries, special heat, acid and alkali proof castings, including castings for stoker and fuel economizers, for scales and for general uses.
- (2) Castings for engines for farm and fishing uses and for reclamation tractors.
- (3) Alloy castings for bearing metals of engines and various alloy cast construction.

F. List of Article and quantity (Annual, out-put)

from 1934 to 1936

Description	1934	1935	1936
Casting for chemical machinery	1547t	1485t	1748t
Casting for engines	930t	682t	1218t
Cast iron pipe fittings	1627t	4230t	3825t
Ingot cases			1023t
Casting for scales	556t	678t	635t
General castings (Casting for stokers & etc.)	1359t	2121t	3188t

KUBOTA IRON & MACHINERY WORKS LTD.,

**2, 2-CHOME FUNADE-CHO, NANIWA-KU,
OSAKA.**

G. List of Article and Quantity
from 1937 to 1945

Description	1937	1938	1939	1940	1941	1942	1943	1944	1945
Castings for chemical men	3425	2006	4627	4722	4726	4355	6752	2885	607
Ingot cases	9950	14626	8361	7084	10208	17711	10020	2636	(A)
Cast iron pipe fittings	5264	3560	1933	1728	2236	1618	2172	315	(A)
Casting for scales	752	250	240	282	458	526	279	(I)	(I)
Casting for engines	2473	724	1102	2958	2345	2584	3430	3555	670
General castings	500	860	2154	1165	1789	1290	808	1111	201
Soil pipes & fittings				110	264	106	618	(I)	(I)
Segment for Kammon tunnel			5124	5190	2275	2183	3319		
Casting for semi-diesel							1554	1505	
Alloy castings				(F)	40	390	543	355	87

Remarks:

- (A) Afterwards, the production transferred to our Amagasaki Factory.
 (I) The production transferred to our Ichiooka Plant which was burnt down by air-raids in 1945.
 (F) Succeeded the production made in Funademachi Plant.
- We could not gather complete data at the time when we compiled our application for reconversion, therefore, additional data are attached herewith.

H. Items of products and their quantities produced after the war.

(a) List of articles and quantities produced after the permission for reconversion granted (quarterly)

Month	1946		
	Jan-Mar	Apr-June	July-Sept. figure for Sept. is an estimated
Articles			
Casting for chemical men	140t	334t	499.6t
Casting for engines	136t	332t	484.3t
Alloy castings	10t	25.6t	34.5t
Casting for stokers		3t	4.9t
Casting for scales		4t	40.8t

KUBOTA IRON & MACHINERY WORKS LTD.,**22, 2-CHOME FUNADE-CHO, NANIWA-KU,
OSAKA.**

(H. Items of products and their quantities produced after the war Cont'd)

(b) Production project for the future (monthly)

Casting for chemical machinery	300 tons
Casting for engines	250 tons
Alloy castings	20 tons

Remarks: 1. Castings for chemical machines for fertilizer production, gas generation, portland cement kiln and etc., including those for scales, stokers and general uses.

2. Castings for engines for tractors and farm & fishing use.

3. Alloy castings for engines and general uses.

I. Outline of buildings and equipments

(a) Buildings

1. Buildings and items of products made therein

<u>Building No.</u>	<u>Kinds of products</u>
1.	Casting for scales
2.	Casting for engines
3.	Chemical machines: Acid, heat and alkali proof castings
4.	Casting for engines
5.	Casting's cleaning shed
6.	Casting for engines
7.	Finished products store house
8.	Casting for chemical machinery
9.	Alloy castings
10.	Pattern shop
11.	Repair shop
12.	Carpenter shop
13.	Material stockhouse
14.	Chrome pipe finishing shop
15.	Chemical machine finishing shop

Remarks: As shown in attached plan, the stoker shop and scale shop of the Kubota Iron & Machinery Works are located adjacent. We have shown them with shaded portion for the sake of reference.

<u>Building No.</u>	<u>Kinds of products</u>	<u>Remarks:</u>
Sho 1	Stokers	The stoker shop of Kubota Iron & Mch Wks, Ltd.
Ko 1	Scales	The scale shop of Kubota Iron & Mch Wks, Ltd.
Ko 2	"	"
Ko 3	Store house of scales	"

KUBOTA IRON & MACHINERY WORKS LTD.,

**2, 2-CHOME FUNADE-CHO, NANIWA-KU,
OSAKA.**

(I. Outline of building and equipments Cont'd)

(a) Buildings

2. Equipment and machines

a. Production equipments

<u>Kinds</u>	<u>Capacity (Metric tons)</u>	<u>Quantity</u>
Cupola furnace	10	1
"	8	1
"	5	1
"	4	1
"	3	5
"	1	1
	Total:	10

b. Subsidiary equipments

Transformers	15
Electric motors	385
Air compressors	5
Cranes	67
Crucible furnaces	1
Generators (0-5KW)	1
Boilers	2

Remarks: In the above mentioned stoker and scale shops which lie adjacent to the plant there are 6 cranes and 64 electric motors.

c. Machines

<u>Kinds</u>	<u>Made in Japan</u>	<u>in abroad</u>	<u>Total</u>
Horizontal lathe without LS	47	0	47
Radial drilling machines	7	0	7
Boring machines	11	0	11
Vertical boring machines	2	0	2
Planing machines	8	0	8
Shaping machines	3	0	3
Slotting machines	1	0	1
Tool grinding machines	2	0	2

Remarks: 1. These are adopted to chemical machines & for repairing purposes.
2. The stoker & scale shop which lie adjacent to the above plant have the following equipment.

KUBOTA IRON & MACHINERY WORKS LTD.,

**22, 2-CHOME FUNADE-CHO, NANIWA-KU,
OSAKA.**

(I. Outline of building and equipments Cont'd)

(a) Buildings 2. - c. Remarks:

<u>Kinds</u>	<u>Quantity</u>
Horizontal lathes without lead screw	25
Radial drilling machines	3
Boring machines	1
Vertical boring machines	1
Planing machines	4
Shaping machines	5
Slotting machines	2
Milling machines	2

These latter machines have been reported en bloc with those of the Okajima Plant in the application AbE which was submitted in March 1946. (Please see explanatory note attached hereto in the end)

(b) Those which have become useless after the war

None

J. The proportion of our monthly output clarified by kinds of main products to that of the whole country (As of Aug. 21, 1946)

<u>Kinds of products</u>	<u>Quantity of monthly production</u>		<u>Propot.</u>
	<u>the whole country</u>	<u>this plant</u>	
Casting for chemical machines (Acid, heat, & alkali resist)	351 metric ton	158 metric ton	45%
Casting for engines (Agriculture use)	260 "	143 "	55%

Remarks:

1. The castings for chemical machinery are widely utilized throughout the country as shown in the table. We are the sole suppliers of acid proof chrome pipes to the Ammonium-Sulphate industries.

2. The factory occupies a high position as supplies of 55% of castings that means the production of the engines to the same per centage.

K. Reason that make the remaining of the plant necessary

(a) This plant has not produced neither airplanes nor any other armaments.

The plant has never produced anything related to airplanes nor armament even in the wartime.

KUBOTA IRON & MACHINERY WORKS LTD.,

22, 2-CHOME FUNADE-CHO, NANIWA-KU,
OSAKA.

(K. Reasons that make the remaining of the plant necessary Cont'd)

(b) This plant was not constructed for war purposes

1. The plant started its operation in 1917 and was completely equipped before the war.

2. In the list G, it may look like that the quantity of the production increased remarkably during the war, however, the very increase is due to the special reasons: that is to say, the plant has produced specially heavy articles such as ingot cases for steel works and segments for the Kammon submarine tunnel, and the remainder has been almost the same in the war time as in the pre-war periods.

(c) In case of the withdrawal of the equipments, the promotion of the civilian lives and food stuffs will be retarded.

1. Castings for chemical machineries are special heat, acid, and alkali proof articles of which we have long experience. It forms a cardinal part of the equipment for chemical fertilizer industry. Especially, our supply of the "Chrome pipes" for the same use amounts to 100 per cent of the demand of the whole country. In the event of the withdrawal of the equipment, it shall be expected that a great obstacle to the production of fertilizer and, consequently, it is feared that the execution of the plan of increasing foods might be badly influenced.

2. Casting for the engines is the main raw material for the engine of the tractors for cultivation and other agricultural purposes listed up in the five year plan. The plant is now endeavoring to promote reclamation and the increase of the food production hand in hand with our Sakai plant which is the finishing shop served by us as the suppliers of their raw material.

The special technique of casting engines has not been obtained easily and is what we have acquired as the result of our several decades' investigation. If the equipment be withdrawn, we believe that we shall not be able to find out its alternative easily that may serve as a substitute for the same technique and equipments in our country. Consequently, we fear that it may cause serious obstacle to the execution of our national food production program.

3. Casting for stokers is supplied to our stoker shop and it is of a special heat proof casting and its amount of production occupies 75% of same in Kansai District (the data from Kinki Industrial Machines Association, May 1946). Its character is so excellent that it can save 30 per cent of fuel than the case without it. They are widely applied at present to salt manufacturing and spinning industries, consequently they are indispensable to the stabilization of civilian lives. Together with the same, castings for scales (weighing machine) also are supplied as raw materials to our Scale Shop in which they are skillfully finished to the excellent weighing machines.

KUBOTA IRON & MACHINERY WORKS LTD.,
2, 2-CHOME FUNADE-CHO, NANIWA-KU,
OSAKA.

(K. Reasons that make the remaining of the plant necessary Cont'd).

(c) - 3.

of all kinds (viz.: platform scales, special big scales, Merric and Denison auto-cumulative scales, auto-register scales, etc. and the quantity of which amounts to 50 per cent of the whole country's output. We believe, therefore, in the indispensability of the same from the view point of the stability of civilian lives. The withdrawal of the equipment for such production is feared to impede the stability of civilian lives from the stand point of stoker and scale manufacturing.

KUBOTA IRON & MACHINERY WORKS LTD.,

22, 2-CHOME FUNADE-CHO, NANIWA-KU,
OSAKA.

Additional explanatory note

1. The Kubota Iron & Machinery Works, owns the Okajima Plant and in addition to the same, a stoker shop and a scale shop both of which lie adjacent to the Okajima Plant. As regards these latter two shops, we have already submitted a report on Jan. 9 1946 by the reports A 5 and A 6 in which these three factories were reported, separately.

2. After the above mentioned report, we have submitted to you en bloc the reports of these three shops in March 1946 by the note AbE.

3. In connection with your notification on reparation concerning our plant in Okajima, we fear that these shops of stoker and scale may be included by mistake as a whole of the Okajima Plant. We are, therefore, submitting to the explanation of those shops as your memorandum.

4. Stoker shop

a. History of the shop

Production of stoker was started in 1927, and since then it has been enlarged gradually ~~producing~~, and in addition to the above, fuel economizer was begun manufactured later. The kinds and quantity of products and equipments for the production are as same in war times as those in pre-war periods, and so they are also in post war period.

b. Kinds of products

Stokers (Sprinkler type)
" (Chain grate type)
Fuel economizers
Conveyers attached to the above

c. Used for

Boilers of spinning industry, electric-power-generation plants and salt manufacturing.

d. The proportion of the out-put of the shop to that in the whole country and its features

The casting consisting the principal parts of those machines is made of special heat-resisting castings made at our Okajima Plant. And those machines can economize about 30 per cent of fuel than without them.

KUBOTA IRON & MACHINERY WORKS LTD.,

22, 2-CHOME FUNADE-CHO, NANIWA-KU,
OSAKA.

(Additional explanatory note Cont'd)

We are one of the two greatest makers of the same machine in Kansai District having long experiences and technical skill, and the amount of products is 75 per cent of that in Kinki District in May this year (according to the data of the Kinki Industrial Machines Association).

e. The importance from the view point of the industrial reconstruction of Japan. As mentioned above, the stoker is indispensable to the recovery of our industry, specially in the present status of shortage of fuel coal supply, and the disposition of the equipments of the reparation may result in a great resistance to the progress of spinning, salt-manufacturing, electric industries and etc.

5. The scale shop

a. History of the shop

The shop began its operation in 1924, and has been enlarged gradually since then extending its production to those of various kinds of special scale. The shop is a subplant of our Fuse Plant. During the war there had been no remarkable change in its kinds of products and equipments, and so also in the post war period in comparison to those during the war and the pre-war periods.

b. Kinds of products

Various kinds of standard platform scales special
Special big scale (for track, wagon, locomotive weighing)
Merric & Denison Automatic Cumulating Scale
Automatic Register Scale

c. Use

Patronized by all industries, viz. coal and mineral mines, electric power station and spinning works, etc. as well as by citizens.

d. The proportion of the product to that of the whole country and its features.

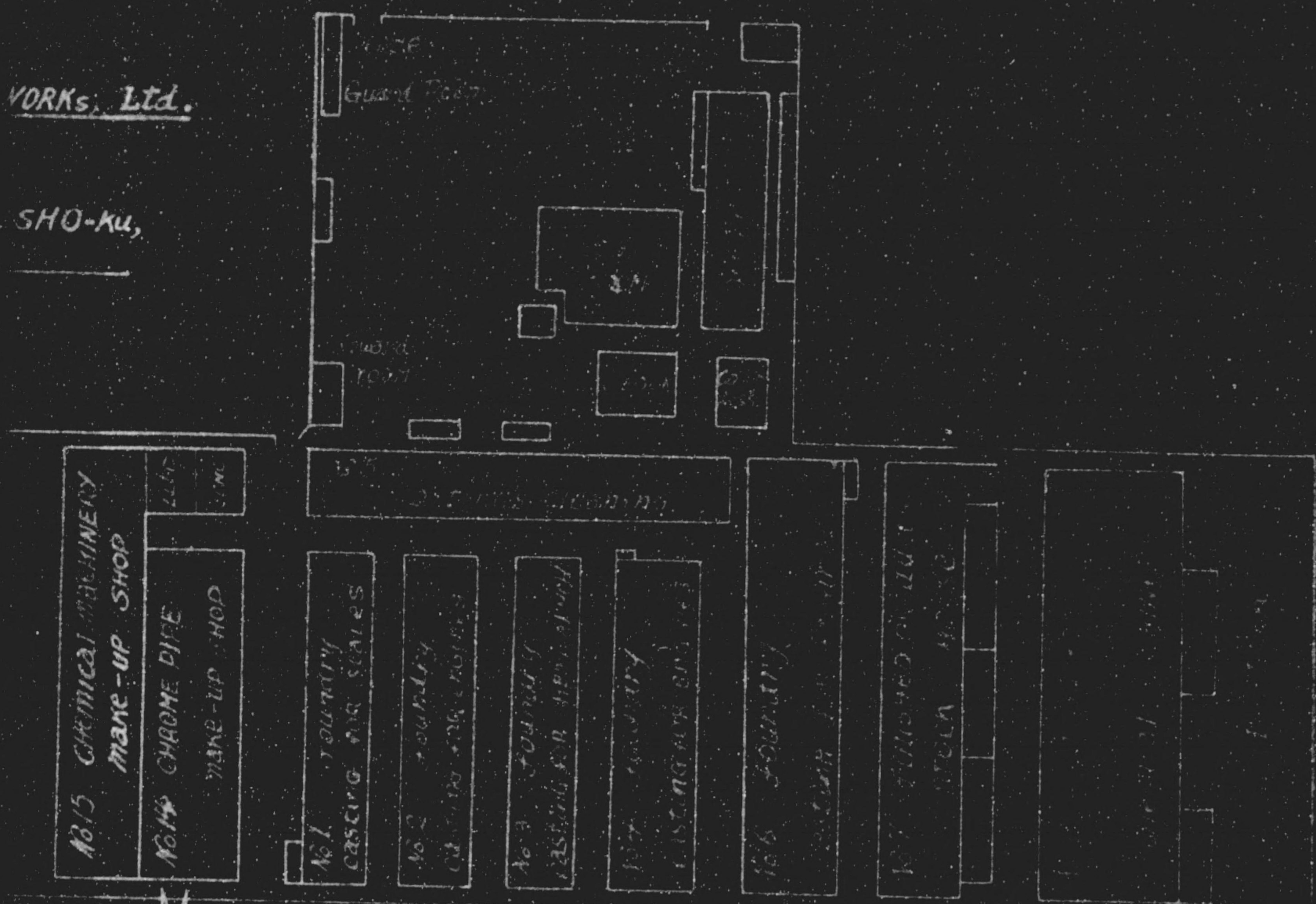
We have expanded our market remarkably by the technical skill obtained from our deep experiences and investigations for 22 years since 1926, amounting 50 per cent of that of the whole domestic production.

e. The importance from the view point of the reconstruction of the Japanese industries.

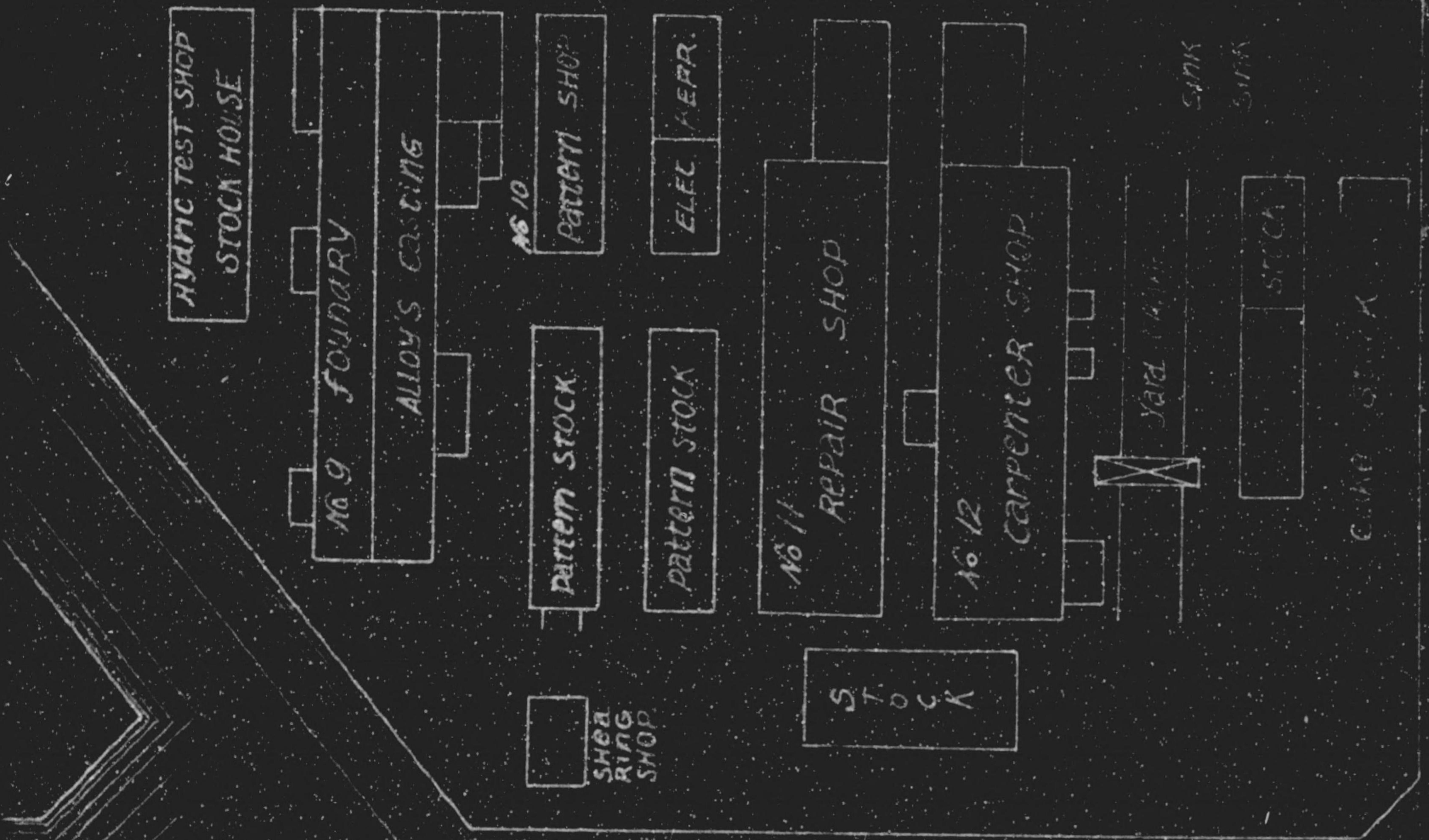
By the reasons as mentioned in the preceeding paragraph, we believe that the article in question is indispensable to the maintenance of peaceful industry in future and the stability of civilian lives.

WORKS, Ltd.

SHO-KU,



Yard Crane - for lifting and setting



Canal

00015

Name and Address of petitioners:

The Association of Labour Unions,
Kubota Iron & Machinery Works, Ltd.
22 Funademachi-Nichome, Naniwa-ku,
Osaka.

Date: 30 September, 1946.

To: Osaka Military Government Team.

Subject: Petition for removal of Custody and Conservation
from factory designated as objects for reparations.

We, the worker of the Sakai and Okajima Factories of the Kubota Iron & Machinery Works, Ltd., it having come to our knowledge that these factories are being placed under custody and control as one of the factories designated as objects for reparations, do hereby most respectfully request that you would kindly give your special consideration upon the subject petition so that the factories be exempted from such custody and control for reasons as described below, as far as these factories have been brought to the present situation with efforts we have so assiduously exerted along the line of peace and civilization for the past fifty years.

And we should be only grateful to you if you would favor us with your profound sympathy and to understanding of the situation, whereby giving us an opportunity to be more exhaustive to the achievement of democracy of the country and in the contribution towards the establishment of peaceful and truly civilized Japan.

1. It was beyond our expectation that our factories have been added to the list of those designated as objects for reparations, as far as we did not produced arms during the war, only the fact being that the army dared to utilize our products that were primarily made for the civil consumption.
2. The Kubota Iron & Machinery Works was originally founded with the sole purpose of producing cast iron pipes, the industry which is indispensible to the realization of peaceful and civilized countries.
3. In addition to the pipes, we have produced engines for agriculture and fishing purposes, the manufacture of which has been carried out throughout the wertime, regardless of the pressure given by the army against it.
4. It is what we may concept as a merit worth mentioning that we were able to get over the war time without giving hindrance to the maintenance of the water and gas systems of various cities of the country, in addition to successful supplies of the motive power to the agriculture and fishing by means of our engines.
5. We were second to none in the promptitude of recovery to the original status when the pressure by the army was lifted following the termination of the war. In this particular, we may consider that the family like management of the company, which is our special feature, is responsible.
6. We are turning our those products as before, under a strong co-operation of capital and labour, which are absolutely essential for the increased production of fertilizers and food stuffs.
7. The guiding principle in the labour campaign of our labour unions is in no way in the nature of extreme left, being after that of American fashion, which will not fail to recognize its mission for the reconstruction of Japan, making the democratization of industry its primary aim. aspiring to establish a New Japan upon this foundation.
8. The principle of our labour unions is in full accord, with democracy of American fashion which is being held by the president of the company who has acquired a full knowledge of it through his visit of the country for two times. This is very satisfactorily and successfully practiced in carrying out the work of the company.
9. The removal of equipment from the factories is certain to bring about hindrance to the plan for increased production of food stuff which means to keep the construction of Japan at retard to no small extend.

10. The family-like management of the company throughout the past fifty years of its history quite different from those cases of newly established companies, has shown its merits in the stabilization of workers, making their long continuous service and presence of many aged workers, who are apt to be owners of large families, its marked feature as the result.

11. The removal of the equipment, which we cannot help but feel as equipment to the requisition of our own houses, will also mean that up to 10,000 persons, which represent the number of the workers and their families, belonged to the company, are deprived of their livings, the fact which is so miserable that we cannot endure from the stand point of a labour union.

Respectfully,

R. Yamamoto

(Signed)

The Association of labour unions of
the Kubota Iron & Machinery Wks, Ltd.

MONTHLY PRODUCTION REPORT

(During September)

Date: 10 October, 1946.

To: Osaka Military Government Team

Thru: Osaka Prefectural Government

Description

1. Name Kubota Iron & Machinery Works, Ltd., Okajima Plant.2. Location 1, Minamiokajima-cho, Tai sho-ku, Osaka City.3. Permitted number and date IG-369 10 June, 1946

4. Permitted articles and capacity

a. Castings for chemical machines	300 T
Castings for engines & accessories	250 T
b. Stokers & fuel economizers with conveyers	50 sets
c. Alloy castings	20 T
d. Scales	20 T

5. Production

	<u>Weight</u> T	<u>Prices (Y)</u>
<u>Articles</u>		
a. Casting for chemical machines	180.902	1,553,945
Castings for engines	120.822	1,191,225
c. Alloy castings	16.692	432,073
d. Casting for scales	31.784	268,613

6. Remarks

Item "b" Stokers & fuel economizers were produced in the stoker shop, which belong to Kubota Iron Mch Wks Ltd., in this plant so that we will report the production of the shop in other report.

Signed G. Kubota.
Gnshiro Kubota.
Tittle President.

MONTHLY PRODUCTION REPORT

(During September)

Date: 10 October, 1946.

To: Osaka Military Government Team

Thru: Osaka Prefectural Government

Description

1. Name Kubota Iron & Machinery Works, Ltd., Stoker shop
(in Okajima Plant)
2. Location 1, Minamiokajima-cho, Tai-sho-ku, Osaka City.
3. Permitted number and date IG-369 10 June, 1946
4. Permitted articles and capacity
 - b. Stokers and Fuel economizers with conveyers 50 sets
5. Production

<u>Articles</u>	<u>Pieces</u>	<u>Weight</u>	<u>Prices</u>
Conveyers	1 x 60%		90,000
Guide type Fuel econozer	1 x 34%		47,118
Stokers	1 x 35%		75,000
parts for stokers	6		44,498
Foundation works	1		14,000

6. Remarks

Signed G. Kubota.
Gonshiro Kubota.Title President.

MONTHLY PRODUCTION REPORT

(During September)

Date: 10 October, 1946.

To: Osaka Military Government Team

Thru: Osaka Prefectural Government

Description

1. Name Kubota Iron & Machinery Works Ltd., Chuko Plant.
2. Location 1, Minamiokajima-cho, Taisho-ku, Osaka City.
3. Permitted number and date IG-371 10 June, 1946
4. Permitted articles and capacity

Cast steel for tractors and carriages 120 tons

5. Production

<u>Articles</u>	<u>Weight</u>	<u>Prices (Y)</u>
Steel casting for carriages	52,276	1,045,520
General steel castings	21,644	286,261
Patterns		90,377

6. Remarks

Signed

J. Kubota.
Jonshiro Kubota.

Title

President.

HEADQUARTERS I CORPS
APO 301 (Kyoto, Honshu)

GLS/rsn

Ref: IG - 371

AG OOL - BA

JUN 10 1946

SUBJECT: Permit for Reconversion from War Production and for Resumption
of Production of Essential Civilian Commodities.TO: Kubota Iron & Machinery Works, Ltd., Chuko Plant
(Name and Address of Firm)Minami, Okajima-cho, Taisho-ku, Osaka City1. a. In accord with paragraph 3, b, Directive Number Three (3)
from the Supreme Commander to the Imperial Japanese Government, dated 22
September 1945, the Kubota Tekkosho K.K., Chuko Plant

(Name of Firm)

is permitted to immediately start production of Cast steel for
(Name of Items)
tractors and carriages. (NOTHING FOLLOWS)b. Maximum production currently authorized is 120 tons.2. The acquisition of material, parts and sub-assemblies as well
as the disposition of finished products, and the establishment of sales
prices will be in accord with the regulations of the Imperial Japanese
Government.3. Until otherwise directed by this headquarters, a monthly report
in English of each item, by name, type and quantity produced by each fac-
tory, sub-contractor subsidiary within this factory's control will be
delivered to this office by the fifteenth (15) day of the following
month.4. It is understood that this permit for reconversion is issued
subject to any and all directives affecting reconversion, ultimate dispo-
sition or otherwise, which have been issued or may hereafter be issued
by the Supreme Commander for the Allied Powers or by this headquarters.

BY COMMAND OF MAJOR GENERAL WOODRUFF:

Info copy to:

SCAP (Attn: ESS) (1) (w/incl)

SCAP (Attn: G-2) (1) (w/incl)

CG Eighth Army (1) (w/incl)

(Attn: Mil Govt)

✓ CO 109th MG Hq ~~xxxxx~~ Company (1)Kyoto Liaison Office (1)

Governor of Prefecture concerned (1)

(Osaka)

Incl 2'

HEADQUARTERS
OSAKA MILITARY GOVERNMENT TEAM
APO 660

HHH/mh

21 Aug 46

SUBJECT: Inclusion of ~~Kubota Tekkosho K.K.~~ ^{Okajima Plant} in OD-5 List

TO : Osaka Liaison Office

1. This is to inform you that the ~~Kubota Tekkosho K.K. Okajima Plant, 1-chome, Minamioakajima-cho, Taisho-ku, Osaka~~ has been included on list appended to OD-5 and is now under the custody and control of this headquarters.

2. You are directed to comply with the following procedure:

a. Establish a 24 hours Japanese civilian guard at the company's plant. The guard will be instructed to prevent fires, theft, sabotage, or unauthorized removal of equipment.

b. Post prominently at all entrances the following sign in both English and Japanese: "This establishment is Off-limits to all unauthorized U.S.A. Troops and Japanese personnel. Authorization to enter this installation will be obtained in writing from the Osaka Military Government Team."

c. Where practicable, close and seal all but one gate or entrance to the establishment and deny access to all except authorized personnel whose duty or work require entrance to the premises.

d. You will see that an official custodian is appointed and advise the management that they are responsible for adequately guarding and preserving equipment.

e. You will notify this company that they will not remove any machinery from their plant without prior approval of this headquarters.

3. A report will be made to this office on completion of above requirements.

BY ORDER OF LT COLONEL TWAY:

HARRY M. WEINREBE
Captain CWS
Adjutant

**REPORT ON CUSTODY AND ADMINISTRATION OF
REPARATION FACILITIES**

TO : _____

THRU: Osaka Prefecture

Date: 15 Sept 1946

1. Name of facility **Kubota Iron & Machinery Works, Ltd.
Okajima Plant.**
2. Location **1, Minamiokajima-cho, Taisho-ku, Osaka.**
3. Description and Condition of administered machineries.

<u>Description</u>	<u>Mch tool</u>	<u>Equipment</u>	<u>Total</u>	<u>Rmk.</u>
Total number	81	486	567	
No. of workings	38	372	410	
U F Repaired	2	17	19	
N i Repairing	1	4	5	
W n Difficult to repr.				
O U Repaired	1		1	
R n Repairing	13	92	105	
K f Difficult to repr.	20		20	
Unfinished machinery	6	1	7	
Total No. of unworkings	43	114	157	

<u>Description</u>	<u>Fin mach</u>	<u>Unfin mch</u>	<u>Total</u>	<u>Rmk.</u>
Horiz lathe without lead	44	3	47	
Radial drilling machine	7		7	
Horiz boring machine	8	3	11	
Vertical boring machine	2		2	
Planing machine	8		8	
Shaping machine	3		3	
Slotting machine	1		1	
Tool grinding machine	2		2	
Equipment				
Cupola furnace	10		10	
Electric transformer	15		15	
Electric motor	385		385	
Air compressor	4	1	5	
Crane	67		67	
Crucible furnace	1		1	
Electric generator	1		1	
Boiler for bath-room	2		2	

Remarks: Unfinished machineries are listed as lack of parts.

pp 45

Kubota Iron & Machinery Works

FILE

KUBOTA IRON & MACHINERY WORKS LTD.,
 22, 2-chome Funade-cho, Naniwa-ku,
 OSAKA.

000 41

Date: 25 September, 1946.

Petitioning unit:
 Kubota Iron & Machinery Works, Ltd.

To: Osaka Military Government Team.

Subject: Petition for exemption of factory designated
 for custody and conservation for reparations
 purposes.

Whereas the Okajima Factory of the Kubota Iron
 and Machinery Works, Ltd. has been designated as one
 of the factories to be placed under custody and con-
 servation for reparations purposes, we beg to state
 that we cannot take it granted that this factory is
 listed as such, and we hereby respectfully request
 you, with reasons mentioned in the attached sheets,
 that you would kindly give your special consideration
 upon this petition for exemption.

000 41 Respectfully,

Signed

G. Kubota
 Gonshiro Kubota, President.

*Kubota Iron Works.
 Okajima Plant
 00-5.*

1. We have never failed to follow peace and civilization in the administration of the company ever since its establishment about 60 years ago by Mr. Gonshiro Kubota who founded the company by his own resources and under whose successful management the company has achieved the position of a great organization as it is today.

The production of cast iron pipes for waterworks and of oil engines for agriculture, both of which are the requisite of peace and civilization, has been the principal object of the company's undertakings. The company has accomplished its natural expansion only in conjunction with the advancement of the civilization of Japan and it is what the company is proud of that it has never solicited for the support of the army or the government throughout its long career of existence.

President Kubota is a true admirer of the United States of which he has had opportunities to learn much through his visits for twice. He has acquired several important patent rights from American companies for practice in Japan, the fact which has furthered his longings for the country more and more. These patents are being successfully practiced in our Mukogawa Factory, while castings of pipe fittings and engines are manufactured in this Okajima Plant.

2. As seen in the following table, the factory concentrates its chief activities in the production of casting articles for chemical machineries and engine parts, and has never been engaged in the production of armaments.

Kinds of article produced	Pre-war	Wartime	Post-war
Castings for chemical mch.	Yes	Yes	Yes
Castings for oil engines	Yes	Yes	Yes
Casting for diesel engs.	Yes	Yes	Yes

3. The plant has not been built for the purpose of war, the fact which can easily and clearly be explained: the plant first commenced to manufacture cast iron pipe fittings in 1917, since then it extended year by year to the present style of equipment in 1935. ^{Pa}

4. Practically the same kinds of casting articles have been produced at this Okajima Plant throughout the pre-war, war and post-war periods, and no new addition has been made to the production during the war. The factory has completed its reconversion into the pre-war production.

5. Now, the factory supplies solely cast iron articles for the Sakai Plant of the same company where every kind of internal combustion engines are manufactured. The plant occupies so important a position as the Sakai Plant plays ~~so~~, ~~owing to~~ makers of oil engines for agriculture and tractors, because cast iron

articles ^{are} ^{to} be the mother of engines. . It produces castings for chemical machinery on the other line and the amount approaches to 45% or more of the production of the whole country, among which so called "chrome pipes", which are special acid proof articles for fertilizer industry are supplied solely by the plant.

It can be judged from the above statements that a great role is being played by the factory in solution of the food problem and the stability of civil life of the people of Japan. Should it be the case that this factory is closed, it would certainly mean a serious blow to the good solution of the food problem.

6. In conclusion, we wish to be permitted to emphasize the following points for your kind attention, namely,

The president is a true lover and aspirant of peace.
This is an industry of peace and culture.
The factory is playing a big role in the stabilization of civil life of the Japanese people.
This is by no means a munition factory.
(Of all these facts, we are confident that you would acknowledge upon your actual visit of the factories)
It is our ardent desire that we can carry on a democratic management of the factory under excellent guidance of United States of America, whereby obtaining opportunities to contribute more and more towards the construction of New Japan.

KUBOTA IRON & MACHINERY WORKS LTD.,
2, 2-CHOME FUNADE-CHO, NANIWA-KU,
OSAKA.

REPORT ON CUSTDY AND ADMINISTRATION OF
 REPARATION FACTORIES

TO: _____

THRU: _____

7 sept 1946

1. Name of factory Kubota Iron & Machinery Wks, Okajima Plant.
2. Location 1, Minamiokajima-cho, Taisho-ku, Osaka.
3. Description & Condition of administrated machineries.

Description	Mch tools	Equipment	Total	Rmk
Total Number	81	486	567	
No. of workings	25	387	403	
U F Repaired	4	22	26	
n i Repairing		4	4	
w n. Difficult to repr				
o U Repaired	3		3	
r n. Repairing	12	92	104	
k f. Difficult to repr	17		17	
Unfinished machinery	9	1	10	
Total No. of workings	45	119	164	

Description	Fin mch.	Unfin. mch	Total	Rmk
Hori. lathes without leading	42	5	47	
Radial drilling machines	6	1	7	
Horizontal boring machines	8	3	11	
Vertical boring machines	2		2	
Planing machines	8		8	
Shaping machines	3		3	
Slotting machines	1		1	
Tool grinding machines	2		2	
Equipment				
Gasps furnaces	10		10	
Transformers	15		15	
Electric motors	385		385	
Air compressors	4	1	5	
Cranes	67		67	
Crucible furnaces	1		1	
Boiler for bath-room	2		2	

KUBOTA IRON & MACHINERY WORKS LTD.,
22, 2-CHOME FUNADE-CHO, NANIWA-KU,
OSAKA.

Incl: 2

Name of machines	Type & Cap,	Quantity	Condition of custody	Location of custody
Horizontal lathe without leading	30'-0"	1		Plant (Okajima)
	24'-0"	1		
	20'-0"	1		
	18'-0"	1		
	16'-0"	1		
	14'-0"	5		
	12'-0"	3		
	10'-0"	2		
	8'-0"	22	Unfited 1	
	6'-0"	10	" 3	
Radial drilling machines	4'-0"	4	Unfited 1	Okajima Plant
	5'-0"	3	" 1	
Boring machines		11	Unfited 3	
Vertical Boring mach	12"	2		
Planing machines	8'-0"	4		
	15'-0"	1		
	16'-0"	3		
Shaping machines	24"	2		Okajima Plant
	12"	1		
Slotting machines	10"	1		
Tool grinding mach		2		
Equipment				
Cupole furnaces	10T	1	Need Repr.	Okajima Plant
	8T	1	"	
	5T	1		
	4T	1	Need Repr.	
	3T	5	Repairing 3	
	1T	1	Need Repr.	
Transformers		15		Okajima Plant
Electric motors		385		
Air compressors		5		
Cranes		67		
Crucible furnaces		1		
Generators		1		
Boiler for bath-room		2		

(1) None disposed machineries, all but custodied and administrated in our Okajima Plant.

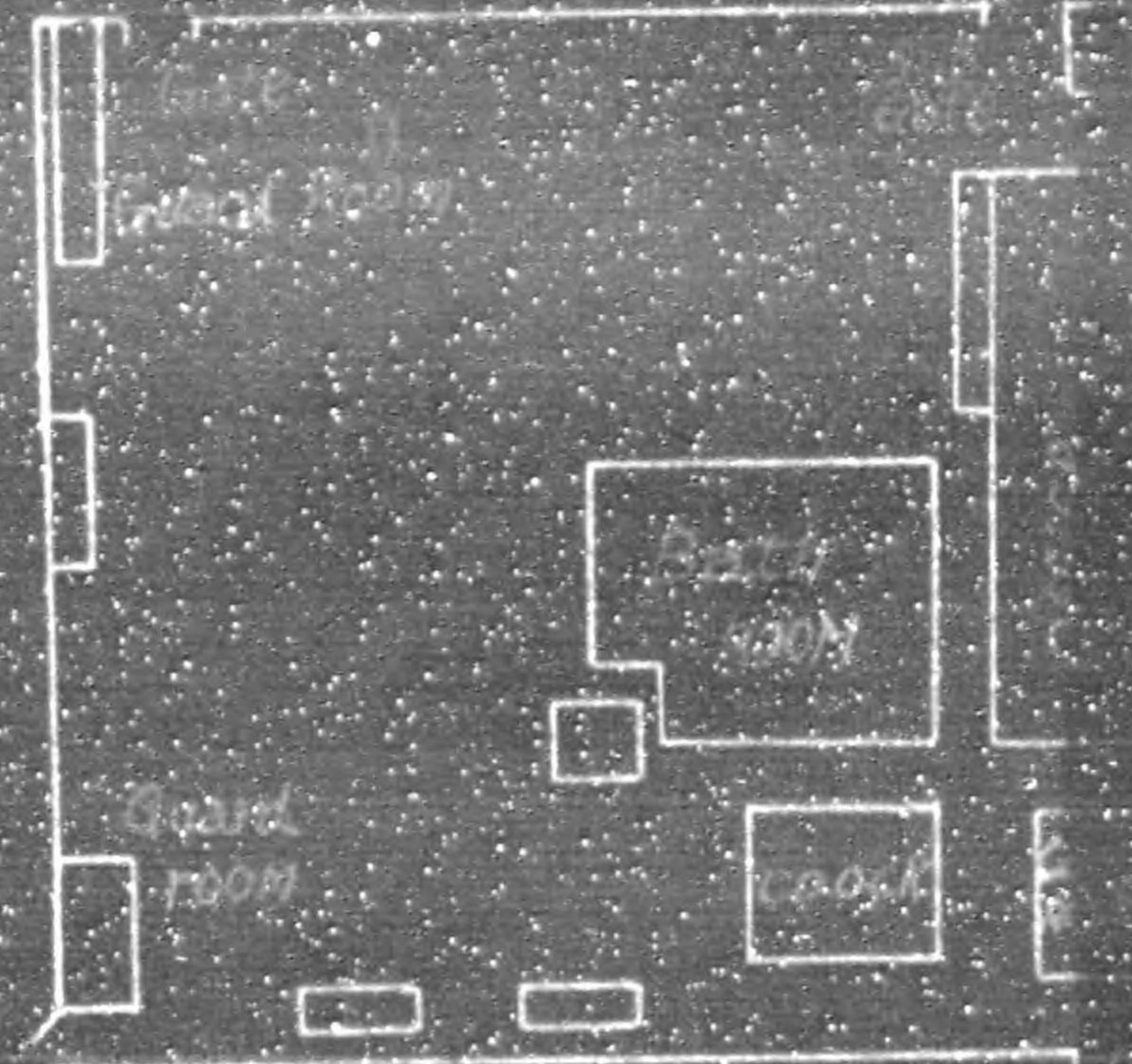
(11) None other machine tools and equipment.

Osaka

KUBOTA IRON & MACHINERY WORKS, Ltd.

Okajima Plant.

1, MINAMIOKAJIMA-cho, TAISHO-ku,
OSAKA.



Scale Branch No. 3
Plant

Scale Branch Plant
No. 2

Scale Branch Plant
No. 1

STEEL ROLLERS, CONVEYER, ETC.
No. 1

No. 15 CHEMICAL MACHINERY
MAKE-UP SHOP

No. 14 CHROME PIPE
MAKE-UP SHOP

No. 1 Foundry
CASTING FOR SCAPES

No. 2 Foundry
CASTING FOR ENGINES

No. 3 Foundry
CASTING FOR REPAIRING

No. 4 Foundry
CASTING FOR ENGINES

castings cleaning

Jard Cranes for SHIPPING

Central

HYDRAULIC TEST SHOP
STOCK HOUSE

No. 9 Foundry

ALLOYS CASTING

No. 10

PATTERN STOCK

PATTERN STOCK

Shear
Ring
Shop

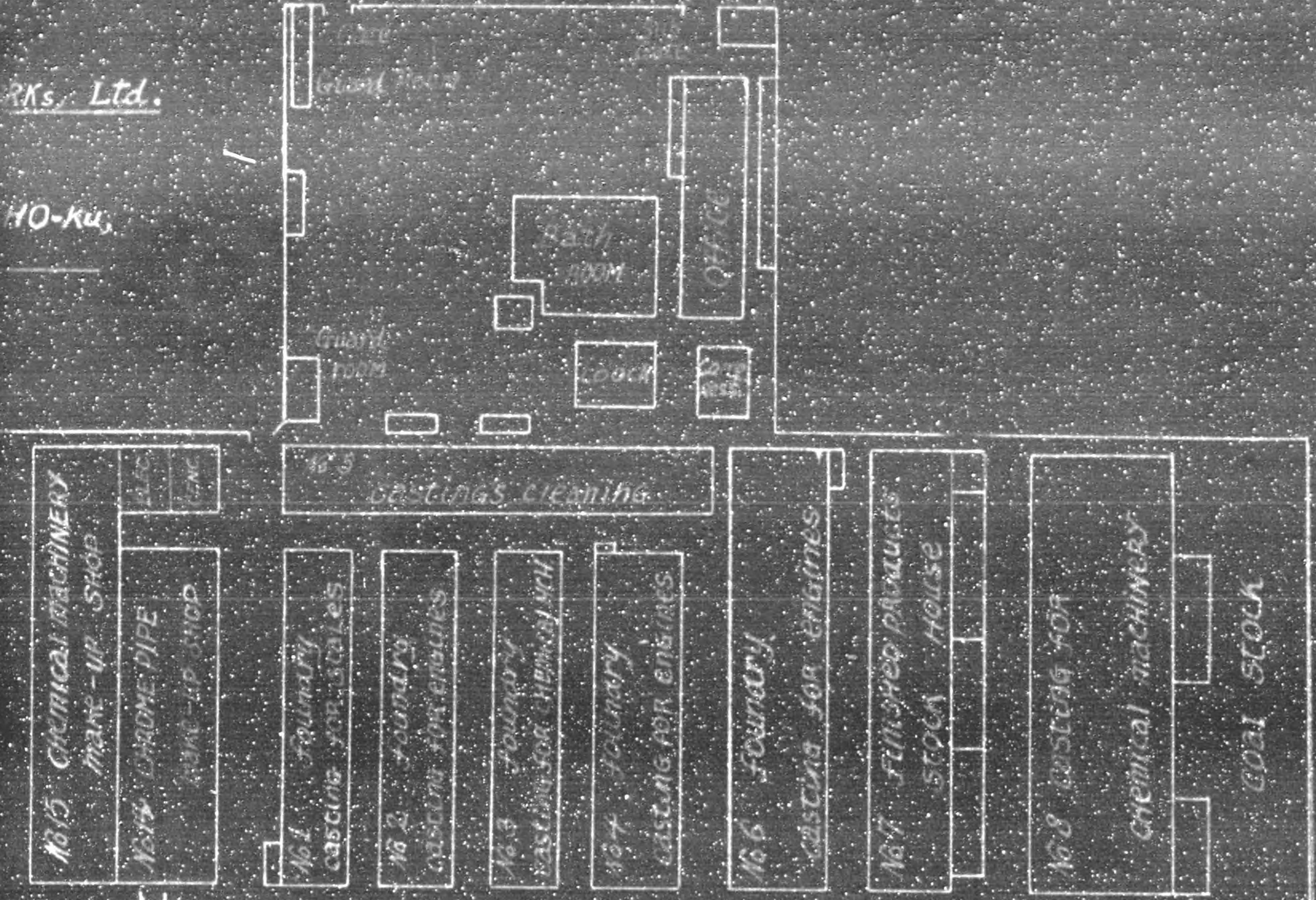
PATTERN SHOP

ELEC. REPR.

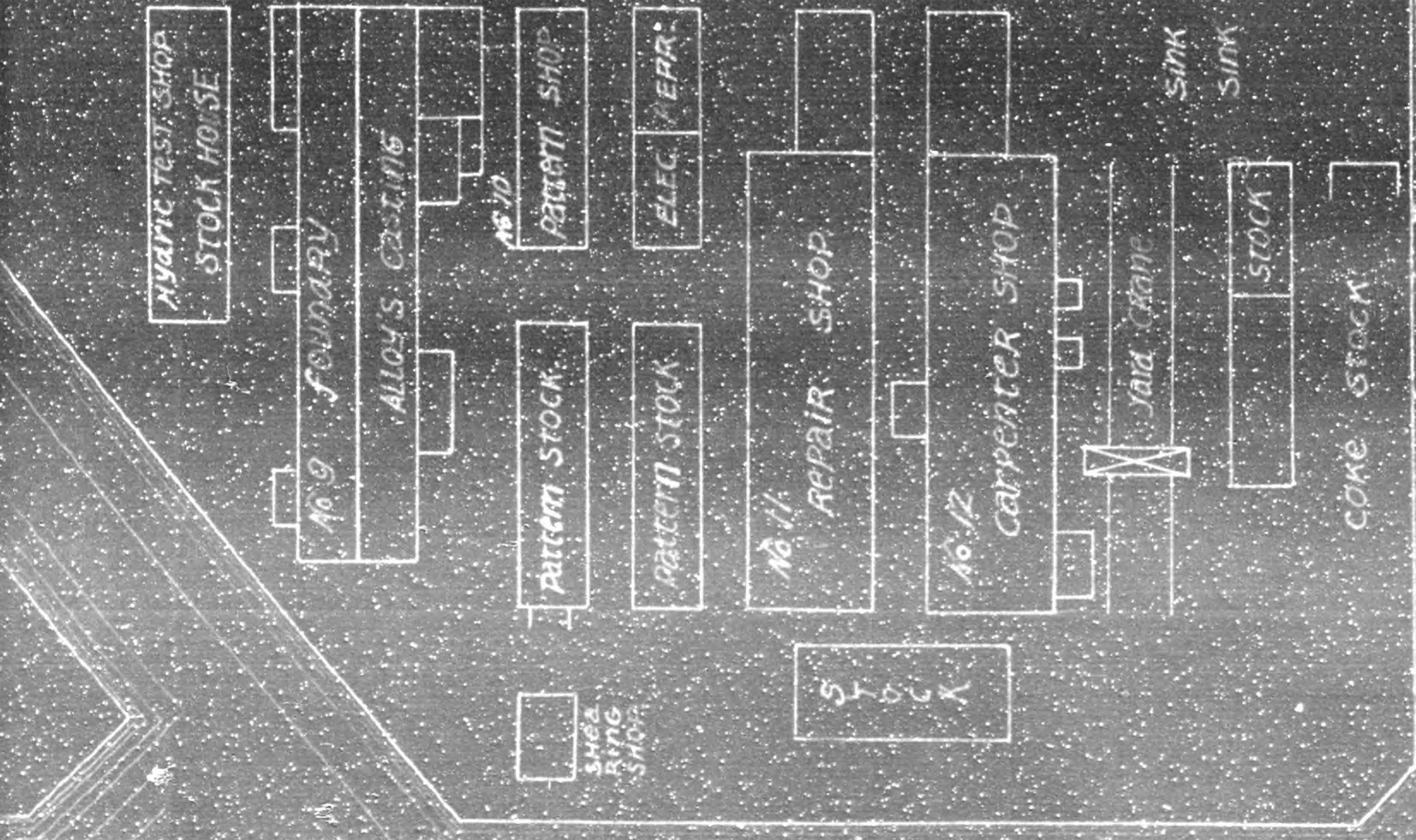


RKs, Ltd.

HO-KU,



Yard Crane for shipping & unloading



canal

canal

HEADQUARTERS I CORPS
APO 301 (Kyoto, Honshu)

GLS/rsn

Ref: IG - 369

AG OOI - BA

JUN 10 1946

SUBJECT: Permit for Reconversion from War Production and for Resumption
of Production of Essential Civilian Commodities.TO: Kubota Iron & Machinery Works, Ltd., Okajima Plant.
(Name and Address of Firm)1, Minami, Okajima-cho, Taisho-ku, Osaka City.1. a. In accord with paragraph 3, b, Directive Number Three (3)
from the Supreme Commander to the Imperial Japanese Government, dated 22
September 1945, the Kubota Tekkosho K.K., Okajima Plant.

(Name of Firm)

is permitted to immediately start production of a. Castings for (1)
(Name of Items)
chemical machines (2) engines & accessories b. Stockers & fuel economizers
with conveyors. c. Alloy castings. d. Scales. (NOTHING FOLLOWS)b. Maximum production currently authorized is (monthly) a. (1) 300 T.(2) 250 T (3) b. 50 sets c. 20 T. d. 20 T.2. The acquisition of material, parts and sub-assemblies as well
as the disposition of finished products, and the establishment of sales
prices will be in accord with the regulations of the Imperial Japanese
Government.3. Until otherwise directed by this headquarters, a monthly report
in English of each item, by name, type and quantity produced by each fac-
tory, sub-contractor subsidiary within this factory's control will be
delivered to this office by the fifteenth (15) day of the following
month.4. It is understood that this permit for reconversion is issued
subject to any and all directives affecting reconversion, ultimate dispo-
sition or otherwise, which have been issued or may hereafter be issued
by the Supreme Commander for the Allied Powers or by this headquarters.

BY COMMAND OF MAJOR GENERAL WOODRUFF:

Info copy to:

SCAP (Attn: ESS) (1) (w/incl)

SCAP (Attn: G-2) (1) (w/incl)

CG Eighth Army (1) (w/incl)

(Attn: Mil Govt)

✓ CO 109th MG Hq ~~Group~~ Company (1)

Kyoto Liaison Office (1)

Governor of Prefecture concerned (1)

(Osaka)

Incl 1!

KUBOTA IRON & MACHINERY WORKS LTD.

22, 2-chome Funade-cho, Naniwa-ku,
Osaka, Japan.

- 6 -

REPORT ON PRODUCTION OF
KUBOTA IRON & MACHINERY WORKS, LTD.
CHUKO PLANT

Permit No _____ 1, Minami-Okajima-cho, Taisho-ku, O
Osaka City.

<u>Description</u>	<u>Actual out-put of June 1946</u>
Cast steels for carriages	16.240 tonw
Ordinary cast steels	51.958 tons

Kubota Iron & Machinery Works, Ltd.

G. Kubota
Signed Gonshiro Kubota, President

KUBOTA IRON & MACHINERY WORKS LTD.

22, 2-chome Funade-cho, Naniwa-ku,
Osaka, Japan.

- 1 -
January

REPORT ON PRODUCTION OF
KUBOTA IRON & MACHINERY WORKS, LTD.
OKAJIMA PLANT

<u>Description</u>	<u>Actual out-put of January 1946</u>
Castings for chemical parts	13 tons
Castings for engine parts	23 tons
Castings for alloyed parts	2 tons
Special scales	0
Stokers	2
Fuel economizers	0
Conveyers	0

Kubota Iron & Machinery Works, Ltd.

Signed

G. Kubota
Gonsuro Kubota, President.

KUBOTA IRON & MACHINERY WORKS LTD.

22, 2-chome Funade-cho, Naniwa-ku,
Osaka, Japan.

- 2 -
February

REPORT ON PRODUCTION OF KUBOTA IRON & MACHINERY WORKS, LTD.

OKAJIMA PLANT ::

<u>Description</u>	<u>Actual out-put of February 1946</u>
Castings for chemical parts	55 tons
Castings for engine parts	62 tons
Casting for alloyed parts	4 tons
Special scales	0
Stokers	3
Fuel economizers	0
Conveyers	0

Kubota Iron & Machinery Works, Ltd.

Signed Gonshiro Kubota, President.

KUBOTA IRON & MACHINERY WORKS LTD.

22, 2-chome Funade-cho, Naniwa-ku,
Osaka, Japan.

- 4 -
April

REPORT ON PRODUCTION OF
KUBOTA IRON & MACHINERY WORKS, LTD.
OKAJIMA PLANT

<u>Description</u>	<u>Actual out put of April 1946</u>
Castings for chemical parts	80 tons
Castings for engine parts	75 tons
Castings for arroyed parts	7 tons
Special scales	8 sets
Stokers	1 "
Fuel economizers	3 "
Conveyers	0 "

Kubota Iron & Machinery works Ltd;

Signed Gonshiro Kubota, President.

0 0 0 0 0 0 0

KUBOTA IRON & MACHINERY WORKS LTD.

22, 2-chome Funade-cho, Naniwa-ku,
Osaka, Japan.

- 6 -
June

REPORT ON PRODUCTION OF
KUBOTA IRON & MACHINERY WORKS, LTD.

OKAJIMA PLANT

Permit No: IG-369 1 Minami-okajima-cho, Taisho-ku, Osaka.

10 June 46

<u>Description</u>	<u>Actual out-put of June 1946</u>
Castings for engines	156.343 tons
Castings for chemical parts	126.000 tons
Casting for stokers	3.000 tons
Castings for scales	40.000 tons
Castings for alloyed parts	11.681 tons
Special scales	31 sets
many fin fuel economizers	1/3 sets
Plane fuel economizers	1 sets
Model DK stokers	0
Conveyers	1/2 sets
Model D stokers	2 sets
Model CN stokers & Accessories	1/2 sets

Kubota Iron & Machinery Works, Ltd.

Signed Gonshiro Kubota, President.

Index

Out-going Correspondences

No.	Date	Subject	Remarks
213	22 Oct 46	Petition for Exclusion from Reparations Program for the Kubota Iron & Mach Works Okajima Plant	
335	9 Nov 46	Petition for Exclusion from Reparations Program for the Kubota Iron & Machinery Works Ltd., Okajima Plant (Munitions Plant Code No.32-53)	
462	25 Nov 46	Release of Plant Under Custody and Control for Reparations Listing	
1149	21 Nov 46	Petition for Exclusion from Reparations Program for the Kubota Iron & Machinery Works Ltd. Okajima Plant	

FILE

Ltr, Osaka Mil Govt Team, subj: "Petition for Exclusion from
Reparations Program for the Kubota Iron & Machinery Works Ltd.,
Okajima Plant (Munitions Plant Code No. 32-53)", dtd 9 Nov. 46.

AG 004 (MG-Em)

2nd Ind.

21 NOV 1946

Headquarters Eighth Army, APO 343.

TO: Commanding General, I Corps, APO 301.

Subject plant was removed from the list of munition plants
subject to reparations by SCAPIN 1340.

BY COMMAND OF LIEUTENANT GENERAL EICHELBERGER:

8

2 Incls:

- 14 w/d.
- 24 w/d.

R. Schaffer
R. SCHAFER
Lt. Col., AGD
Asst. Adjutant General.

B-mg
HQ. I CORPS
AG 004

AG 004 - BA

3rd Ind

EHN/md

Hq I Corps, APO 301,

29 NOV 1946

TO: CO, Osaka Mil Govt Team, APO 660.

Your attention is directed to 2nd indorsement.

BY COMMAND OF MAJOR GENERAL WOODRUFF:

2 Incls:

1. Petition, Central Liaison
Office, Tokyo (trip)
2. Petition, Min. of Com. &
Ind. (trip)

H. B. Taylor
H. B. TAYLOR
MAJOR, A.S.D.
ASST. ADJ. GEN.

2 DEC 1946

OSAKA M.G
RES-COM-IND
FILE 1149

25025

HEADQUARTERS
OSAKA MILITARY GOVERNMENT TEAM

H
HHH/mh
H

9 November 1946

SUBJECT: Petition for Exclusion from Reparations Program
for the Kubota Iron & Machinery Works., Ltd.,
Okajima Plant (Munitions Plant Code No. 32-53)

TO: Commanding General
I Corps, APO 301
ATTENTION: Mil Govt Sec

1. Attached are petitions from the President of the Central Liaison Office, Tokyo and the Ministry of Commerce & Industry for the exclusion of subject plant from list of munitions plants to be taken for reparations.

2. Attention is invited to letter, this headquarters, dtd 22 Oct 46 same subject. The opinion of this office remains unchanged and believes that this plant does not fall within the scope of the criteria published for munitions plants, and we again recommend that it be deleted from the list of munitions plants selected for reparations.

FOR THE COMMANDING OFFICER:

2 Incls:
1-Petition fr Central Liaison
Office, Tokyo (quad)
2-Petition fr Ministry of Com
& Ind, Adjustment Div (quad)

Edward B. Millett
EDWARD B. MILLETT
Major, F.A.
Adjutant

23316

MIG

BASIC: Ltr. Osaka Mil Govt Team, subj: "Petition for Exclusion from Reparations Program for the Kubota Iron & Machinery Works Ltd., Okajima Plant (Munitions Plant Code No. 32-53)", dtd 9 Nov. 46.

AG 004 - BA

1st Ind

EHN/yo

Hq I Corps, APO 301,

14 NOV 1946

TO: CG, Eighth Army, APO 343

1. Letter referred to in paragraph 2, basic communication, was forwarded to your headquarters, 22 October 1946. In reference letter, this headquarters recommended that the Kubota Iron and Machinery Works Ltd., Okajima Plant, be removed from the list of plants subject to reparations.
2. Transmitted herewith are petitions of the Central Liaison Office and the Ministry of Commerce & Industry of the Imperial Japanese Government for removal of subject plant from the reparations list. These petitions supplement petitions previously forwarded as inclosures to above reference.
3. This headquarters is of the opinion that the Okajima Plant is improperly listed as a munition plant, and it is recommended that subject plant be removed from reparations selections.

FOR THE COMMANDING GENERAL:

Karl W. Marks

KARL W. MARKS
LT COL, AGD
ASST ADJ GEN

2 Incls:
n/c

PA 233/6

HHH/j

25 November 1946

SUBJECT: Release of Plant Under Custody and Control for Reparations Listing.

THROUGH: Osaka Liaison Office

TO: Kubota Tekkoshe K.K., Okajima Plant
1-chome, Minamioakajima-cho,
Taisno-ku, Osaka-fu

1. You are hereby notified that Kubota Tekkoshe K.K., Okajima Plant has been removed from list of plants taken for reparations.
2. Action taken for the proper custody and control is no longer necessary and may be discontinued and signs removed.

FOR THE COMMANDING OFFICER:

EDWARD B. MILLETT
Major, F.A.
Adjutant

OSAKA MIL GOVT TEAM
A.P.O. 660

HHM/jt

22 October 1946

SUBJECT: Petition for Exclusion from Reparations Program for the
Kubota Iron and Machinery Works, Ltd., Osaka Plant
(Code No. 32 - 53)

TO: Commanding General
I Corps, APO 301
ATTENTION: Mil Govt Sec

1. Attached are petitions for exclusion from list of munitions plants to be taken for reparations from the Director of the Kinki Maritime Bureau, the Governor of Osaka Prefecture, the Association of Labor Unions, Kubota Iron and Machinery Works, Ltd. and from subject company.

2. This plant was built in 1916 and immediately began producing stokers, large size scales (platform, counter and special types), various types of casting, including engines and chemical plant accessories, ingot moulds and cast iron pipes and fittings.

3. During the war its production items were unchanged.

4. This plant, in fact, is the foundry plant for the Sakai Plant which produces oil engines for farming equipment, air-compressors, 60 Horsepower marine diesels, small marine engines and dynamos.

5. As this plant does not fall within the scope of the criteria published for the munitions plants, it is recommended that it be deleted from the list of munitions plants selected for reparations.

FOR THE COMMANDING OFFICER:

4 Incls:	C. M. KAMAR
1-Petition from Director of Kinki Maritime Bureau (quad)	1st Lt, Inf Adjutant
2-Petition from Governor of Osaka Prefecture (quad)	
3-Petition from Association of Labor Unions (one)	
4-Kubota Iron & Machinery Wks., Ltd. (one)	