

## **Historic, Archive Document**

Do not assume content reflects current scientific knowledge, policies, or practices.





TRUSTWORTHY  
 GARDEN, FIELD  
 and  
 FLOWER SEEDS

SEEDS ADAPTED TO NEW ENGLAND



PINE TREE STATE SEED ©  
 BATH, MAINE

1918

# What the War Gardens Did

It is estimated that the war gardens last year numbered over 3,000,000, with a total area of over 1,150,000 acres, and it is also estimated that they increased the nation's food supply to the extent of about \$350,000,000. These figures are admittedly approximations, for complete and accurate figures are too much to expect in such a case, but they can be accepted as a reasonable summary of what the crusade accomplished.

What the gardens cost is another story. The main thing is that the use of back yards, vacant lots and hitherto untilled tracts near cities and large villages added hundreds of millions of dollars' worth of food supplies to our national supply and to that extent helped us in our great undertaking of feeding our armies and our allies over the seas. Undoubtedly all these gardens have done much to keep down the cost of living. How much cannot be measured, for household expenses have been bad enough as it is. Without the gardens it is certain that they would have been worse. Moreover, the war gardens have exerted their influence on the cost of living during the past winter months. The vegetables that were stored away last fall made the food problem look simpler in thousands of households.

Perhaps more important still is the influence of the garden campaign on our national thought and habits. Food saving and food conserving have come to mean something that they never meant in America before. There will be less waste and a lot more thought of the needs of the future. The physical and mental benefit that has resulted to those drawn to wholesome out-of-door work during the spring and summer months is a factor not to be ignored.

There is every reason to believe that the gardens this year and the canning and drying activities will be on a larger scale than ever before. Some gardeners failed and are discouraged, but many more, and their neighbors with them, have seen what can be done and have learned much by experience.

---

## World's Greatest Horticultural Achievement



"Friend" nuSYStm sprayer and  
"Friend" spray-gun.

## A "FRIEND" INVENTION

*(Works on any power spray)*

*Cuts*  
**SPRAYING COSTS**  
*In Two!*

Let Us Tell You

**"FRIEND" MFG. COMPANY**

GASPORT, N. Y.

---

IF YOU RECEIVE AN EXTRA COPY HAND IT TO A FRIEND

# Some Plain Truths About the 1918 Farm Seed Situation

---

## SEED CORN

**SEED CORN** condition most serious ever known, almost a national calamity, not half enough to go around. Unprecedented cold weather in October ruined the germination of a large percent of the crop in the Northern, Middle and New England States. Such a demand for Seed Corn never known before.

If you need Seed Corn, order at once and we will do our level best to furnish you Seed Corn of the highest possible quality and get it to you before planting time.

Beware of cheap Seed Corn this year. Know what you are buying and be sure you get what you buy.

## FIELD BEANS

**FIELD BEANS** free from anthracnose and of good germination never so scarce. We have less than 500 bushels to offer.

Our seed is hand picked, free from rust and was harvested before injured by the frost.

## CANADA FIELD PEAS

**CANADA FIELD PEAS** and **SOY BEANS** in short supply. Our stocks are light but of splendid quality.

## SEED OATS

**SEED OATS** should be cheaper this year than last, owing to the big crop, were it not for the great world war now raging and the marked shortage of Wheat. Oats are being used for human food more than ever before, and only Oats of the best quality are so used. Oats of good quality are in very short supply, and we predict Seed Oats will average higher than last season.

## SEED BARLEY

**SEED BARLEY.** The 1917 Barley crop is a good one, but the high price of all cereals, due to war conditions, will compel Barley to sell higher than for years.

## SPRING WHEAT

**SPRING WHEAT** in heavy demand, have choice stock. Would advise our customers to order their seed early. Grow your own wheat.

## CLOVER SEED

**CLOVER SEED** higher than at any time in the last fifty years. Government Crop Report shows only 64% . United States usually imports 75,000 to 100,000 bags, this year none, and we are called upon to export 20,000 bags to England.

Good crops of **ALFALFA** and **ALSIKE**, more reasonable in price and advise sowing freely. Our stocks of Alfalfa, northwestern grown, highest possible purity and absolutely hardy.

## TIMOTHY

**TIMOTHY** crop also light. Prices very reasonable now but will be higher.

Do not buy cheap seeds of low purity and lower germination. The best is cheapest.

## SEED POTATOES

**SEED POTATOES** will command good prices. Good seed very scarce. Potatoes are being used more extensively than ever before in order to save the high-priced foods—Wheat, Beans, Beef, Pork, etc.—foods that are easy of export and needed by our troops and Allies in the field. Therefore, we believe Potatoes will command high prices throughout the year.

## ORDER EARLY

**GARDEN SEED.** We have a good supply of Beet, Carrot, Cabbage, Cucumber, Lettuce, Turnip, Peas, Beans, etc.

**ORDER EARLY.** We advise ordering early. Should be pleased to book your order now and ship when wanted.

**FOOD WILL WIN THE WAR—PRODUCE IT**

# WAR GARDEN YEAR



At no time in many years has the importance and the necessity of the home garden been so great as this year. Our country is facing a critical situation in the matter of food supply, and yet it is one from which the individual can get relief, and the remedy is the home garden.

A small garden, carefully planned and tended will furnish an abundance of fresh vegetables for the home table throughout the summer.

Do not leave a furrow unturned which might grow a crop, and let every acre of land be tilled to its greatest fruitfulness. Don't hesitate to double the size of your gardens, increase your acreage in clovers, grasses and farm crops—be Prepared and you will reap a golden harvest.

The one sure way to beat the "high cost of living" is to raise your own living. It costs no more to make a garden than it always did. No increase there. The garden will yield as much and just as good stuff.

We want you to get the best results possible and will consider it a great favor to be of service to you. We look forward with pleasure to again filling your orders this season.

Sincerely yours, **PINE TREE STATE SEED CO.,** William R. Kimball,  
Bath, Pine Tree State. General Manager.

## TO MEMBERS OF THE GRANGE:—



You can save money by getting up a Seed Club in your Grange and sending the order to us.

We will send you some extra Catalogs and order blanks free. Will also wrap each order separately and properly label them and will include a lot of free packets. Write for full information about the advantages secured on Grange orders.

### GOOD NAMES WANTED

In sending us your orders for garden seeds, we would appreciate it very much if you would send us a list of the names of any friends whom you believe would be interested in receiving this catalog. On receipt of such list we will promptly mail catalog to them.

### SEEDS POST PAID

Please bear in mind we pay the Postage on all seeds by the packet, ounce, quarter pound and half pound. When large quantities are ordered, add at the rate of 5 cts. for first pound and 2 cts. for each additional pound.

### SEEDS BY PARCEL POST

If pints and quarts of Beans, Corn, Peas, Onion Sets and Lawn Seed are wanted sent by Parcel Post, add at the rate of 6 cts. for first quart and 3 cts. for each additional quart. Seeds by the pound add at the rate of 5 cts. for the first pound and 2 cts. for each additional pound. This will include safe and proper packing.

### STORE KEEPERS DIRECTIONS HOW TO ORDER:

We are prepared to quote the lowest wholesale prices, submit a list of your requirements.

### DIRECTIONS HOW TO ORDER:

Order.—Early. Terms.—Our terms are cash. Remittances.—May be made by check, express or postoffice order or money in registered letter; small amounts in stamps. Packing.—We make no charge of boxes or

packing, or delivery to depot or express office. Seeds Postpaid by Mail.—We pay the postage on seeds by the packet, ounce, quarter pound and half pound. Address.—In ordering be particular to sign your name, postoffice, R.F.D. route, county and State, plainly. Small Orders.—If you only want a single packet, do not hesitate to send for it. Free Seeds.—With every order we shall include free of charge, a liberal amount of Trial Packets. Seed Packets.—Our Vegetable and Flower Seeds are put up in neat packets, large and well filled. Agents.—We want an agent in every town. Write for terms.

## 25 Cents

WORTH OF SEEDS EXTRA WILL BE ALLOWED ON EACH ONE DOLLAR SENT FOR SEEDS IN PACKETS AND OUNCES ONLY.

You will find an order sheet and return envelope in this book. Why not use it today?

**PINE TREE STATE SEED CO.,** Bath, Maine  
Telephone 154-R Trial Grounds, 684 High Street

No Order Too Large—No Order Too Small.

**FOOD WILL WIN THE WAR—PRODUCE IT**

## "Our Customers Vouch for Our Seeds"

Monmouth, Me., Dec. 9, 1916.

Pine Tree Seed Co., Bath, Me.

Closing this the sixteenth year in which I have relied upon your seeds, I want to express my appreciation of the uniform high character of the same. In all this time no variety has failed to germinate and produce bountifully. To the man seeking early crops this means everything. Sweet Pea, Nasturtium and Pansy seed has also proven of exceptional quality. Among the novelties sent the past spring, I want to emphasize the superior food value of your Bobolink bean and Kelway's Mammoth Ruta Baga. Order for 1917 will be sent in early. Wishing you merited success.

G. M. TWITCHELL.

Col. H. S. Foster of No. Calais, Vt., writes:

"The seeds received from your house were O. K. You will get an order from me soon and a good sized one."

Lowell, Mass.

"While visiting in Maine last summer I had several bouquets brought to me, and the flowers were so beautiful and different from any I had ever seen, I had to ask where the seeds were bought, and your address was given me. If you have a catalog please send me a copy."

Mrs. C. C. BERRY.

Middlesex, Vt.

"Received the seeds all right and am very much obliged for the very generous amount of complimentary packages."

J. A. CHAPIN.

Mr. E. H. Libby, Secretary of the Maine State Grange, writes as follows:

"The flower seeds received from you last spring were very fine and my wife was very much pleased with them. No one makes a mistake in buying your seeds."

"The seeds came all right. We never had so many in a package before. They are bright looking seed, shall surely recommend them whenever we have an opportunity."

Randolph, Vt.

GEO. C. FLINT.

Bowdoinham, Maine, Dec. 2, 1916.

We planted about 6 acres of the Ruta Baga turnips with your seed last spring. We had a hard task to keep the weeds down and out. Put a good deal of time into this work with the result that we got about 2000 bushels for sale and 500 bu. for sheep stock.

The seed that we had from you gave us some handsome stock, hard, yellow, sweet and of high quality. They bring a handsome price in the market. We shall want some more next spring.

Yours truly,

W. B. KENDALL, Manager,  
Sagadahoc Fertilizer Co.

Great Pond, Maine.

I want to thank you for seed that is worth the planting. I had a lot from the Government last year, but give me Pine Tree State seed every time.

C. W. EMERY.

Gaysville, Vermont.

Your Catalog is very interesting. Wish you would send me some for distribution in the Grange.

MRS. W. I. MASON.

## Novelties and Specialties For 1918

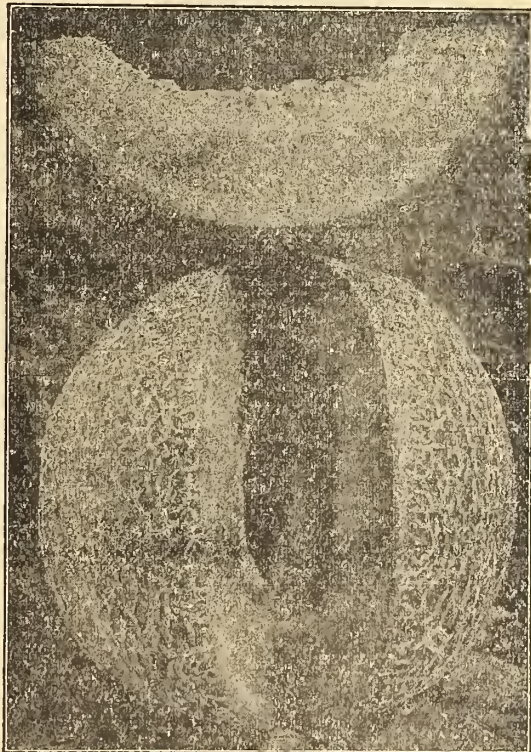
This melon has been grown by Mr. Metcalf of Cumberland County for over twenty years, of whom we secured a small supply of seed.

The following is his description:

"More than 20 years ago, a horticultural friend told me he had been talking with a man interested in gardening who told him of a superior variety of Musk Melon he was growing. Soon after he gave him a few of the seeds, these he divided with me. We both planted them the next season with good success. After they had ripened I called at the home of my friend one evening. When he brought in a nice looking Melon and opened it, as he did so, its fine appearance and delightful odor caused him to exclaim: 'Ah! That's worth a thousand dollars.' Since then it has been known as the Thousand Dollar Melon. I have continued to plant this variety every year since, saving seeds from the best and first to ripen each year and know of no other variety any better or will ripen as early."

The Melons average two to six pounds.

Price per packet 10c; three for 25c; oz. 35c.



A GRAND MELON FOR NEW ENGLAND.  
Metcalf's "Thousand Dollar" Musk Melon

## NOVELTIES AND SPECIALTIES FOR 1918

**CRIMSON GLOBE BEET.**—This beet is remarkable for its smooth skin and fine shape, and it does not grow large and coarse. The flesh is very dark and quality fine, sweet and tender. Pkt. 10c; oz. 20c;  $\frac{1}{4}$  lb. 50c; lb. \$1.75.



CRIMSON GLOBE BEET

**MELON, BURPEE'S SPOXY CANTALOUPE.**—

These melons are of a deep salmon color of rich sugary flavor, often producing as many as ten melons to a vine. Exceptionally luscious in flavor. Per pkt. 10c; oz. 30c;  $\frac{1}{4}$  lb. 50c.

**ALL SMOOTH CUCUMBER.**—A variety of the highest merit. The fruits are large, extra smooth and very regular in form, a rich dark green color, retaining its color until fully ripe. novelty. Pkt. 10c; oz. 20c;  $\frac{1}{4}$  lb. 75c.

**WHITE WONDER CUCUMBER.**—The skin is ivory white in color, the flesh is exquisitely fine in quality. A sure cropper and a great novelty. Pkt. 10c; oz. 20c;  $\frac{1}{4}$  lb. 60c.

**POLE BEAN, KENTUCKY WONDER WAX.**—

Similar to Kentucky Wonder, but the quality is far superior. The vines are densely laden with a solid mass of long thick and meaty stringless, yellow pods. Very early and continue bearing until killed by frost. Pkt. 10c; pt. 35c; qt. 70c.

**BURPEE'S GOLDEN BANTAM.**—One of the best extreme early varieties. Dwarf and sturdy in habit, growing about four feet high and bearing two or three good ears to each stalk. The ears five or six inches in length, having eight rows of broad yellow grains of a delicious flavor. Pkt. 10c; pt. 25c; qt. 50c; selected ears 10c each.

Please send me some of your catalogs for distribution in the Grange. I think they will be appreciated.

SARAH L. STAPLES,

**THE NEW DAVIS PERFECT CUCUMBER.**—

This new variety beats all others in points of beauty, quality and productivity, a beautiful dark green color, handsome shape and enormously productive. This variety enables one who has no glass to produce the same high priced cucumbers as those grown in a greenhouse. Pkt. 10c; oz. 15c;  $\frac{1}{4}$  lb. 50c; lb. \$1.50.

**CORN, EARLY MAYFLOWER.**—The

earliest variety yet produced, seven to ten days earlier than Cory. Very productive and for so early a variety, is of excellent quality. Pkt. 10c;  $\frac{1}{2}$  pt. 15c; pt. 25c; qt. 50c;

**EARLY MORN PEA.**—The earliest

large wrinkled pea in cultivation, a great cropper. Larger pod and more prolific than the Gradus. The best money-making pea grown. Pkt. 10c; pt. 25c; qt. 50c.

pk. \$3.50.

**Three Choice Ruta Baga Swede Turnips**

We have imported these seeds from a noted English grower of turnips and we urge all our customers to try at least one variety.

**RUTA BAGA NE PLUS ULTRA.**—A new English turnip, superior to our American varieties. Flesh richly colored, fine grained and sweet. Cooks quickly, free from strong odor. Pkt. 10c; oz. 20c;  $\frac{1}{4}$  lb. 75c.

**RUTA BAGA PERFECT MODEL.**—A heavy cropping purple top Swede with small tops of fine flavor, and a long keeper. Matures early. Pkt. 10c; oz. 20c;  $\frac{1}{4}$  lb. 75c.

**RUTA BAGA KELWAYS' MAMMOUTH.**—An enormous cropper, grows freely in all kinds of soil. It possesses very dense sound flesh, globe shaped, short neck, dwarf foliage and a clean single tap root. The highest quality Swede in cultivation. Pkt. 10c; oz. 20c;  $\frac{1}{4}$  lb. 75c.

One packet each of the above Swedes for 20c  
One ounce each of the above Swedes for 50c.

**SYMBS' BLUE HUBBARD SQUASH.**—This new variety of Hubbard Squash is very thick meated, fine grained, dry and very sweet. Very hard shell and a long keeper. It resembles the Warded Hubbard in shape, but of a bluish color. Pkt. 10c; oz. 15c;  $\frac{1}{4}$  lb. 60c; lb. \$2.00.

**QUITE CONTENT PEA.**—The largest and finest podded Pea in cultivation. Received First Class Certificate from the Royal Horticultural Society of London. A main crop variety. Grows 5 feet high; foliage and pods deep green; pods 6 to 7 inches long, hanging mostly in pairs; ten to twelve peas in a pod. Flavor superb. Pkt. 10c; pt. 30c; qt. 50c.



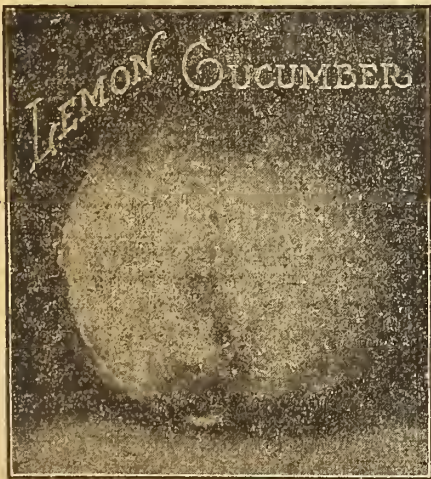
**SWISS CHARD LUCULLUS.**—The stalks are thick and broad. The leaves are large and heavily crumpled, crisp, tender and of fine flavor. Pkt. 10c; oz. 20c;  $\frac{1}{4}$  lb. 50c.



Swiss Chard—Giant Lucullus

**TOMATO ADMIRAL DEWEY (new).**—One of the finest in every respect, early, smooth and uniformly handsome, ripens clear up to the stem, superior to all other varieties for main crop for canning or shipping, of large size. Pkt. 10c; oz. 35c.

**LEMON CUCUMBER.**—The Garden Lemon.—The Lemon Cucumber resembles a lemon in shape, color and size, but grows on a vine like



a cucumber. It has a thin skin, is crisp, tender, sweet and fine flavored. We are safe in predicting the Lemon Cucumber will become a great favorite for slicing, or pickles. The best time for picking is just as it turns yellow. Pkt. 10c; oz. 20c;  $\frac{1}{4}$  lb. 60c.

**VICK'S GOLDEN NUGGET.**—Sweetest on Earth. The ears of this new golden sweet corn are larger and more prolific than Golden Bantam, tender and unusually sweet. Ready for market only a few days behind the earliest. Pkt. 10c; pt. 30c; qt. 50c.

**GOLDEN-ROD.**—Very productive, having two or three good ears on a stock; golden yellow kernels; quality unequalled. Good variety to follow Golden Bantam. Pkt. 10c; pt. 35c; qt. 50c.

**WATER MELON YANKEE.**—Best for New England. This new melon is a fine variety for the family and market, very early and prolific. The bright red flesh is cool, crisp and sweet. Will mature anywhere in Yankee land. Pkt. 10c; oz. 20c;  $\frac{1}{4}$  lb. 45c; lb. \$1.50.



Water Melon Yankee



Copenhagen Market Cabbage

It is the largest of the early round-headed varieties, and its habit of growth allows of its being planted close together in the field or garden, and it matures so uniformly that the entire crop is ready for cutting at one time. Pkt. 10c; oz. 40c;  $\frac{1}{4}$  lb. \$1.50.

**WHITE ICICLE.**—The finest pure white, long variety; very early, with smooth symmetrical-shaped roots. This radish is not only crisp and tender when young, but retains these qualities until the roots reach a large size. Pkt. 5c; oz. 15c;  $\frac{1}{4}$  lb. 45c.



**KELWAY'S NEW YELLOW MANGOLD.**—"Best of All." A wonderful improvement on all existing stocks of Yellow Mangolds, being the heaviest cropper and easiest pulled, besides being of the very finest possible quality. Shape between intermediate and tankard; beautiful pale yellow skin with fine top. The largest and best of all yellow mangolds. Pkt. 5c; oz. 15c;  $\frac{1}{4}$  lb. 50c; lb. \$1.75.

**CELERY GIANT SOLID WHITE.**—The very best variety for general use. In quality it is very sweet and tender. Pkt. 10c; oz. 25c;  $\frac{1}{4}$  lb. 75c.

**COPENHAGEN MARKET CABBAGE.**—(See illustration.) A splendid extra-early round head cabbage from Denmark. The heads are grown upon a remarkably short stem, are solid and large in size, weighing 10 to 12 lbs., light green leaves, and of excellent quality. Pkt. 10c; oz. 40c;  $\frac{1}{4}$  lb. \$1.50.

**BEEFSTEAK LETTUCE.**—This grand new variety grows to an immense size, and makes large loose heads of a rich and buttery flavor. The leaves are of a soft green tinged and flaked with red, never grows bitter. A fine summer variety. Pkt. 10c; oz. 25c;  $\frac{1}{4}$  lb. 75c.



**BRITTLE ICE LETTUCE**

**LETTUCE, BRITTLE ICE.**—Very large, extremely crisp, hard-heading variety. The plants grow to a large size, sweet and mild in flavor. Pkt. 10c; oz. 30c;  $\frac{1}{4}$  lb. 75c.

**LETTUCE, MAY KING.**—A new early head lettuce, its growth is extremely rapid and its fine

large heads are ready in advance of any other heading variety. Crisp and very brittle. Pkt. 10c; oz. 20c;  $\frac{1}{4}$  lb. 75c.

**BURPEE'S FORDHOOK FAMOUS CUCUMBER.**—The finest flavor of all. Vines producing an enormous crop. Perfectly smooth and very dark green, the handsomest fruits measure twelve to fifteen inches long and wonderfully prolific. Per pkt. 10c; oz. 20c;  $\frac{1}{4}$  lb. 65c.

**CABBAGE, GLORY OF ENKHUIZEN.**—Earlier than the All Seasons; of medium size, globe shaped and handsome dark green color; just right for the market. Leaves fine ribbed; outer leaves set close to permit close planting. Where this variety has been tried in market growing districts the growers have been very enthusiastic. Pkt. 10c; oz. 40c;  $\frac{1}{4}$  lb. \$1.50.

**FAMOUS NEW PEA—PIONEER.**—In this wonderful new pea we believe we have something that has long been sought after by the market gardener who wishes to second crop his ground. The plant is very robust in habit, makes a very heavy crop of large dark green pods. In our trial grounds last summer it grew a vine about 16 inches high and they were so heavily podded on dwarf vines that it resembled almost a windrow of picked peas. They are more than a week earlier than Gradus and fully as handsome in appearance. Pkt. 10c; pt. 25c; qt. 50c.

**POPCORN, BLACK BEAUTY.**—An extra early variety, pops very large, most tender and crisp of all. Pkt. 10c.

**POPCORN, RED BEAUTY.**—An improved variety, very prolific and tender when popped. Pkt. 10c.

One packet each of above for 15c.

**A WONDERFUL NEW TOMATO, JOHN BAER.**—Earliest and best; brilliant deep red color; smoothest; no core; almost free from seed; delicious flavored; far more solid and mealy than any other; no culls; ripens even up to the stem; perfect beauties; uniform in size and ripening; a perfect shipper; blight proof. Pkt. 10c;  $\frac{1}{2}$  oz. 30c; oz. 50c.

**POLE BEANS, BOBOLINK.**—If you want the very best, most tender and delicious "String Beans," raise the Bobolink. The best pole bean for northern planting, extremely early and very prolific, the vines bearing long, flat meaty pods, entirely free from strings or fiber, a rich, light green color, very attractive, most excellent quality. The very best of all the pole beans. Plant enough to can—they are delicious. Dr. Twitchell writes as follows: "Among the novelties you sent me last spring, I want to emphasize the superior food value of your Bobolink beans. Large packet 15c, postpaid;  $\frac{1}{2}$  pt. 20c; pt. 35c; qt. 70c.

## TRE SPENCER TYPE OF SWEET PEAS



True Spencer Type

## SIX SUPERB SPENCERS FOR 25 cts.

One regular packet each. Burpee's King White, Countess, King Edward, Burpee's Vermillion, Lovely and Burpee's Blend. Postpaid for 25c.

**FLORA NORTON SPENCER.**—The flowers are nicely waved of a bright blue with tint of purple.

**HELEN LEWIS SPENCER.**—A rich crimson orange, enormous sized flowers.

**COUNTESS OF SPENCER.**—Large wavy petals, soft, rose-pink in color, free flowering. The large, handsome flowers are produced on long stems.

**BLANCHE FERRY SPENCER.**—Bright rose standards with white wings.

**CHARM SPENCER.**—Snow white suffused with delicate pink; most beautiful for bunching.

**DUPLEX CRIMSON KING SPENCER.**—A large fine deep crimson dainty Spencer. A most beautiful pink edged variety.

**ETTA DYKE SPENCER.**—A fine large white.

**DAINTY SPENCER.**—A most beautiful pink edged variety.

**DOBIES' CREAM.**—The best of all the primrose or cream shades.

**FIERY CROSS.**—Has all the appearance of live fire, the color being a scorching fire-red. Pkt. 15c; oz. 35c.

**ROBERT SYDENHAM.**—A wonderful deep orange color, beautifully waved. Pkt. 15c; oz. 30c.

**ELFRIDO PEARSON.**—Light pink and blush.

**MARY GARDEN.**—Soft buff suffused with salmon pink, beautifully waved.

**ASTA OHN SPENCER.**—A charming soft, lavender suffused with mauve.

**ILLUMINATOR SPENCER.**—A very pleasing color; ground of salmon orange with rich bright cerise pink.

**WEDGEWOOD SPENCER.**—Producing usually four flowers to a stem of Wedgewood blue.

**FLORENCE MORSE SPENCER.**—Light pink edged variety, very beautiful, borne upon strong stiff stems, four flowers to each stem.

**VERMILLION BRILLIANT.**—The most brilliant iridescent scarlet Spencer yet produced. The standard is very bold and beautifully waved.

**IRISH BELL OR DREAM.**—A lovely rich lilac, flushed with pink.

**LOVELY.**—White ground with blotch of deep pink at base shading to light pink.

**KING EDWARD SPENCER.**—The best pure red Spencer. Very large with especially immense wings.

**MRS. ROUTZOHN SPENCER.**—A beautiful apricot pink and straw color.

**MARGARET ATLEE SPENCER.**—The largest and finest Spencer Sweet Pea yet introduced. A rosy salmon pink on a creamy buff ground. The flowers are extraordinary size, beautifully waved. Pkt. 15c; oz. 40c.

**OTHELO SPENCER.**—A rich deep maroon; flowers beautifully waved.

**PEARL GRAY SPENCER.**—Of a lovely light dove gray, large flowers on long stems.

**PRIMROSE SPENCER.**—Like the above only the color is a primrose or creamy yellow.

**SWEET LAVENDER SPENCER.**—A charming soft lavender, large flowers, finely waved.

**WHITE SPENCER.**—Pure white of large size, beautifully crinkled and fruted. The flowers are borne three and four on a stem and covered with blooms throughout the season.

**BURPEE'S KING WHITE.**—The finest pure white Sweet Pea ever offered. The vines are extremely strong, flowers the largest, of the finest frilled type, while the color is of the purest white, and eclipses all other white Sweet Peas.

**MIXED ENGLISH SPENCERS.**—We have imported this mixture from a noted English Sweet Pea grower. This blend contains the cream of all the best Spencers including many novelties. It is the finest and most gorgeous mixture ever offered and will delight all who want a good variety of colors. Pkt. 10c; ½ oz. 15c; oz. 25c; 2 ozs. 40c; ¼ lb. 75c.

**THE BURPEE BLEND SPENCERS.**—Contains the cream of all the finest Spencers and will surely delight all who want a grand variety of colors. Pkt. 10c; oz. 25c; 2 ozs. 40c; ¼ lb. 75c; lb. \$2.50.

Price each of above Spencers, except where noted otherwise: Pkt. 10c; ½ oz. 15c; oz. 25c; ¼ lb. 65c; lb. \$2.25.

## Grandiflora and Waved Unwin Sweet Peas

**GLADYS UNWIN.**—A large bold flower of the New Orchid flower type, a lovely pink.

**NORA UNWIN.**—A grand white, large and beautifully waved flower.

**JANE SCOTT.**—Flowers unusually large and of a beautiful shade of rich pink.

**BLACK BIRD.**—Very deep purplish maroon, almost black, wings darkest claret.

**SCARLET GEM.**—Dazzling scarlet, bright and clear and wonderfully free flowering.

**HELEN PIERCE.**—A gloxinia-flowered type, bright blue mottled on white, of good size.

**FLORA NORTON.**—A beautiful rich lavender. The flowers are large and fine form.

**VIOLET KING.**—A deep glowing violet purple. A strong grower.

**MRS. AARON JONES.**—This beautiful new Sweet Pea was named in honor of the wife of the Master of the National Grange. The color is a soft but brilliant pink. A fine large flower.

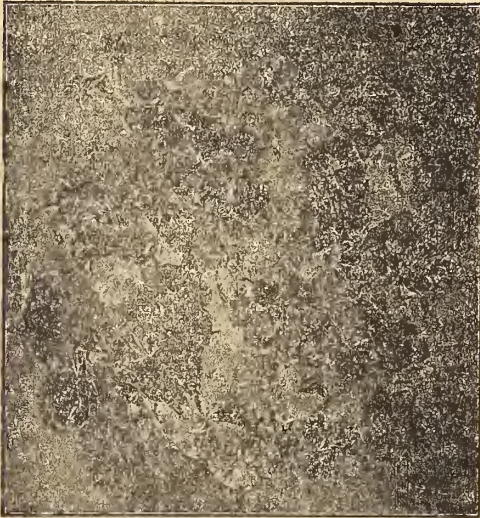
**KING EDWARD VII.**—Bright crimson of enormous size and borne upon long stems.

**ROYAL KNIGHT.**—A deep glossy maroon. The best of all the dark maroons.

**WILD ROSE.**—Flowers almost uniformly three on a stem, of large size, a deep rose pink. Price each: Pkt. 10c; oz. 15c; ¼ lb. 45c.

Ten packets of any of the above new varieties for 50c postpaid.

### New Nasturtiums



Variegated Leaved Nasturtiums

**TALL NASTURTIUM, TWILIGHT.**—The flowers are extra large in size and of the full, expanded form. They are most distinct and pleasing in color, having a faint salmon or buff tint heavily overlaid or suffused with a deeper rosy salmon. Oz. 20c.

**TALL NASTURTIUM, MOONLIGHT.**—This is a companion variety to the preceding, with flowers fully equal in size, but of an exquisite pale straw yellow.

**TALL NASTURTIUM, SUNLIGHT.**—This grand variety bears flowers of largest size, most beautifully colored—clear, rich golden yellow, and are produced so profusely as to almost conceal the large dark green foliage.

**TALL NASTURTIUM, MIDNIGHT.**—The foliage is a deep, dark green and bears an abundance

of bloom of wonderful rich coloring, the darkest of all Nasturtiums. The flowers are deep brownish red.

**TALL NASTURTIUM, VARIEGATED LEAVED.**

—A new race of Nasturtiums, every leaf is variegated with yellow, white and green, beautifully blotched and striped. The flowers of many bright colors in charming contrast to the handsomely variegated foliage. Pkt. 10c; oz. 25c.

**TALL NASTURTIUM, IVY LEAVED.**—The leaves are of a rich green, veined with white resembling the foliage of the English ivy. The flowers are of many colors and star-like in appearance. Pkt. 10c; oz. 30c.

**TALL NASTURTIUM, GOLDEN LEAVED.**—The foliage is of a bright golden yellow with many colored flowers. Oz. 20c.

**DWARF NASTURTIUM, VARIEGATED LEAVED.**—Many colored flowers in charming contrast to the silver variegated foliage. Oz. 25c.

**RAINBOW MIXTURE TALL NASTURTIUM.**—The most showy and varied in color of all Running Nasturtiums, the mixture contains over thirty of the choicest named varieties, exceedingly fragrant and flower freely until severe frost.

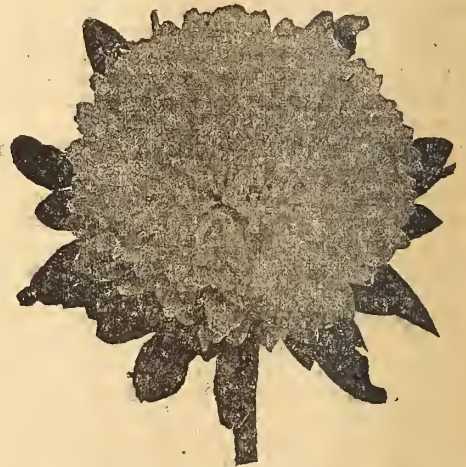
Price each of above, except where noted, pkt. 10c; oz. 15c; ¼ lb. 45c.

Five packets of any of the above for 35c.

**DWARF NASTURTIUM.**—Golden leaved. Pkt. 10c; oz. 20c.

**DWARF SPENCER NASTURTIUM.**—A new type of Nasturtium. The very peculiar wavy emerald green foliage is different from any other known variety. The plants grow very compact, covered with beautiful velvety flowers borne on long stems. Choice mixed, pkt. 10c; oz. 30c.

### Choice Asters



**ASTER LAVENDER GEM.**—Large double flowers of exquisite lavender shade of the Ostrich feathered type. The flowers are borne in profusion on long stems. Pkt. 15c.

**ASTER, AMERICAN BEAUTY.**—Very large flowers with incurve petals of a deep rose color, borne on extra stout, long stems. Pkt. 10c.

**ASTER CREGO GIANT MIXED.**—Grand large flowers, measure four inches. The petals are double the length of the old varieties and are twisted and curled. Pkt. 10c.

**ASTER GIANT, COMET MIXED.**—Elegant flowers with long, wavy, twisted petals, producing a striking effect. Pkt. 10c.

**ASTER VIOLET KING.**—The flowers have an immense number of long, slender, curled petals of rich violet purple. Pkt. 10c.  
One packet each of the above Asters for 35c.

**NEW RED SUNFLOWER.**—The colors are not truly fixed and produce some yellow blooms, but the large proportion are of a fine red, tipped yellow. Pkt. 10c.

**GLADIOLUS**

Gladiolus are the most attractive and useful of summer flowering bulbs, and as a cut flower all through the summer months and well into the autumn they hold a place that cannot be taken by any other flower.

(If wanted by mail add 5c per dozen; 25c per 100.)

**America.**—One of the best Gladiolus. The color is a most beautiful soft lavender pink; very large and massive. Large bulbs 5c ea., 50c doz., \$2.50 per 100; medium size 35c doz., \$2.00 per 100.

**Baron Hulot.**—Rich royal violet blue. 5c ea., 50c doz., \$2.50 per 100.

**Faust.**—Deep velvety crimson, very



large bloom, 5c ea., 50c doz.

**Glory of Holland.**—Pure white, 6c ea., 50c per

**Halley.**—A delicate salmon pink, large flowers, blooms early, 5c ea., 45c doz., \$2.00 per 100.

**Mrs. Francis King.**—A splendid light scarlet, flowers large, well expanded, tall, straight spike, 5c ea., 45c doz., \$2.50 per 100.

**Niagara.**—Magnificent large flowers, soft primrose yellow, tinged rose pink in the throat, tall strong spike, 10c ea., \$1.00 per doz.

**Panama.**—The finest pink, long spikes and large flowers, very beautiful, 10c ea., \$1.00 per doz.

**Peace.**—Immense pure white flowers with a delicate lilac feathering in the lower petals. The flowers are unusually large, and borne on a strong spike, 10c ea., \$1.00 per doz.

**Salmon Beauty.**—A beautiful salmon pink, 5c ea., 40c doz., \$.00 per 100.

**Scarlet King.**—The best bright scarlet, 5c ea., 40c doz., \$2.00 per 100.

**Pink Perfection.**—Apple blossom pink, 10c ea., 75c doz.

**Loveliness.**—Cream white and apricot, 10c ea.

**Empress of India.**—A rich maroon red, 5c ea., 50c doz.

**Princeps.**—Immense flower of a rich, dazzling scarlet, maked with white on lower petals, 6c ea., 50c doz.

**Good Mixed.**—3 for 10c, 30c doz., \$1.50 per 100.

**Extra Mixed.**—3 for 10c, 40c doz., \$2.00 per 100.

**Rainbow Mixed.**—A splendid mixture, including all of the above kinds and many others, 6 for 30c, 50c doz., \$2.50 per 100.

**War.**—Deep blood red, 20c ea.

50 small Gladiolus bublets for 10c postpaid. These make fine blooming bulbs next season.

Gladiolus Seed, Many Choice Varieties Mixed.—10c pkt.

**All Season Mixture**

**Of Choice Vegetable Seeds**

We sell a great many packets and ounces mixed vegetable seeds. Our mixtures contain the best of the early, medium and late varieties, all good standard varieties and the seed the same as we use in any other packet. These mixtures are very popular. Keeps one in fresh vegetables throughout the season.

**TABLE BEET.**—A mixture of all varieties for summer and winter use.

**CUCUMBERS.**—Early and late, long and short.

**CARROTS.**—A mixture of five varieties, long and short, early and late.

**CELERY.**—Several good kinds.

**LETTUCE.**—Ten of the best varieties, early and late, curled and smooth leaved.

**PUMPKINS.**—All kinds, mostly pie pumpkins.

**SQUASH.**—Winter squash of all known varieties.

**TURNIP.**—Early and late, white, purple and yellow.

**TOMATO.**—Ten choice varieties, early and late, large and small fruited.

**SWISS CHARD.**—Three varieties, mixed.

**MUSK MELON.**—Four good kinds.

**CITRON MELON.**—Red and green seeded.

Price any of the above, large packet 5c; oz. 15c.

**HERBS.**—All kinds, mixed. Large packet 10c.

**ONIONS.**—Big onions, little onions, red, white and yellow. Pkt. 10c; oz. 25c.

**POP CORN.**—Four kinds. Large packet 10c. pt. 35c; qt. 70c.



Inoculate this  
Seed with  
FARMOGERM.

Inoculate this  
Seed with  
FARMOGERM.

## RELIABLE VEGETABLE SEEDS

### Asparagus

**PALMETTO.**—Bright green color; very desirable. Pkt. 5c; oz. 10c;  $\frac{1}{4}$  lb. 30c.

### Beans (Dwarf or Bush)

#### BEANS BY PARCEL POST

If pints and quarts are wanted sent by Parcel Post, add at the rate of 6 cents first quart and 3 cents for each additional quart.

**GOLDEN EYED WAX.**—Early, hardy and productive. No finer wax bean known. Pkt. 10c; pt. 35c; qt. 70c.

**RUST PROOF WAX.**—Pods long, nearly straight, broad, flat, golden yellow, stringless and brittle. Pkt. 10c; pt. 35c; qt. 70c.

**DETROIT WAX.**—Early and productive. Pt. 35c; qt. 70c.

**BLACK WAX.**—Yellow pods, superior snap beans. Pkt. 10c; pt. 35c; qt. 70c.

**BOUNTIFUL.**—Extra early, flat, green pods, tender and stringless. Pkt. 10c; pt. 35c; qt. 70c.

**BURPEE'S BUSH LIMA.**—This bean grows from fifteen to eighteen inches high in a compact bush form, and produces heavy crops. Two weeks earlier than the common Lima. Pkt. 10c; pt. 35c; qt. 70c.

**RED KIDNEY.**—Fine for baking. Pt. 25c; qt. 50c.

**LOW'S CHAMPION.**—Early, hardy and enormously productive, large podded, stringless and very tender. Pkt. 10c; pt. 30c; qt. 60c.

**BURPEE'S NEW STRINGLESS GREEN POD.**—For either the market or home garden, no other green-podded bean is so satisfactory. The pods are a rich green, round and straight, five inches long, solid, meaty and broad, tender and brittle, and stringless. Pkt. 10c; pt. 30c; qt. 60c.

**DWARF RED CRANBERRY.**—Early, tender and stringless. Pkt. 10c; pt. 30c; qt. 60c.

**OLD FASHIONED YELLOW EYE.**—An excellent field bean, very productive. Qt. 50c.

**SULPHUR.**—An excellent field bean, very fine for baking, light cream colored. Qt. 50c.

**SNOWFLAKE PEA.**—A decided improvement over the common pea bean, early and very productive. Qt. 50c.

**IMPROVED YELLOW EYE.**—Qt. 50c.

Per Peck of any of the above \$3.50.

**IMPROVED GODDARD DWARF HORTICULTURAL.**—A standard variety shell bean, very prolific, long, highly colored pods. Very attractive. Pkt. 10c; pt. 30c; qt. 60c.

### Pole Beans

**KENTUCKY WONDER WAX.**—See novelty page.

**POLE HORTICULTURE.**—Excellent as a string or shell bean. Pkt. 10c; pt. 30c; qt. 60c.

**LARGE RED CRANBERRY.**—The good old-fashioned variety, tender and excellent. Crop failed.

**MAMMOTH PODDED HORTICULTURAL.**—The vine is vigorous, pods very large, bright carmine, slightly streaked, very handsome and exceedingly productive. Beans large, splashed and spotted with red, either green or dry. Pkt. 10c; pt. 35c; qt. 70c.

**LAZY WIFE'S.**—Abundantly productive, and of excellent flavor, with long green, fleshy and stringless pods. Fine for shelling or baking. Whey dry. Pkt. 10c; pt. 35c; qt. 70c.

**EARLY GOLDEN CLUSTER WAX.**—The pods of this variety are enormously large and long and borne in clusters. Pkt. 10c; pt. 35c; qt. 70c.

**SCARLET RUNNER.**—Very ornamental, free climbers, bright scarlet flowers. Pkt. 10c; pt. 30c; qt. 60c.

**WHITE RUNNER.**—Very pretty planted with the scarlet runner. Pkt. 10c; pt. 30c; qt. 60c.

**BOBOLINK.**—Very early tender and stringless. Best of all the pole varieties. Pkt. 15c; pt. 35c; qt. 70c.

**KENTUCKY WONDER.**—Very early and productive. The pods, though large, cook tender and delicious. Pkt. 10c; pt. 35c; qt. 70c.

**INDIAN CHIEF OR WAX.**—An excellent variety with long, light yellow pods, stringless and tender. Pkt. 10c; pt. 35c; qt. 70c.

**ARLINGTON RED CRANBERRY.**—Early and productive, pods large and tender. Pkt. 10c; pt. 35c; qt. 70c.

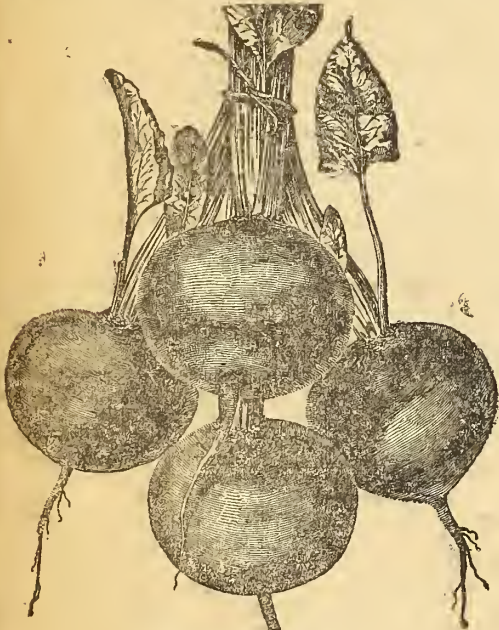
### Beets

(For large shipments by mail, see rates on page 1.)

**CRIMSON GLOBE (new).**—See novelties.

**EARLY BLOOD TURNIP.**—A standard sort, early, round and smooth. Pkt. 5c; oz. 15c; ¼ lb. 45c; lb. \$1.75.

**ECLIPSE.**—One of the best early sorts, fine grained crisp and tender. Pkt. 5c; oz. 15c; ¼ lb. 45c; lb. \$1.50.



Crimson Globe Beet

**DETROIT DARK RED.**—One of the very best sorts, either for market or home use. Tops small, roots globular and very smooth skin, dark red, flesh bright red. Very crisp, tender and sweet. Pkt. 5c; oz. 15c; ¼ lb. 50c; lb. \$1.75.

**CROSBY'S EGYPTIAN.**—For early use, either for market or family gardens, this variety easily takes the lead. Pkt. 5c; oz. 15c; ¼ lb. 50c; lb. \$1.75.

**EDMAND'S TURNIP.**—The flesh is deep blood red in color and exceedingly sweet and tender in quality. Pkt. 5c; oz. 15c; ¼ lb. 45c; lb. \$1.50.

**BETT SEED.**—To sow for greens only, 30c ¼ lb.; \$1.00 lb.

**MIXED VARIETIES.**—Of all of the above kinds. Large package 5c; oz. 15c; ¼ lb. 35c; lb. \$1.25.

**SWISS CHARD.**—Used as greens. Pkt. 5c; oz. 15c; ¼ lb. 40c; lb. \$1.50.

**SWISS CHARD—LUCULLUS.**—See novelties.

**PERPETUAL SPINACH BEET.**—Fine for greens, has the flavor of spinach. Pkt. 5c; oz. 20c; ¼ lb. 50c; lb. \$1.75.

### Mangle Wurzel

**CARTER'S ORANGE GLOBE.**—Best variety of yellow globe.

**LANE'S IMPERIAL SUGAR.**—Long white variety, excellent for feeding stock.

**MAMMOTH LONG RED.**—Producing roots of mammoth size. This is the best long red.

**GATE POST.**—Heavy cropper, small top.

Price each, pkt. 5c; oz. 15c; ¼ lb. 45c; ½ lb. 80c; 1 lb. \$1.45.

**KELWAY'S NEW YELLOW MANGOLD.**—“Best of All.” A new English yellow mangold. A very heavy cropper, largest and best of all the yellow mangolds, producing enormous crops. Be sure and try it. Oz. 15c; ¼ lb. 50c; lb. \$1.75.

### SPECIAL OFFER

Varieties of Mangold's mixed, oz. 10c; ¼ lb. 30c; lb. \$1.00, postpaid.

### Brussels Sprouts

**IMPROVED EXTRA.**—Closely covered with large, compact sprouts. The very best sort. Pkt. 10c; oz. 30c.

**SUTTON'S MATCHLESS.**—Large and extra fine. Pkt. 10c; oz. 35c.

### Cabbage

**COPENHAGEN MARKET.**—See Novelty page.

**ENKHUIZEN GLORY.**—See Novelty page.

**EARLY JERSEY WAKEFIELD.**—Very early, sure heading, pyramidal shape. Pkt. 5c; oz. 40c; ¼ lb. \$1.50.

**HENDERSON'S EARLY SUMMER.**—Earliest of all the large cabbages, solid and compact. Pkt. 5c; oz. 30c; ¼ lb. \$1.00.

**EARLY WINNIGSTADT.**—Heads large, cone-shaped, solid, one of the best for all soils. Pkt. 5c; oz. 30c; ¼ lb. \$1.00.

**DANISH BALL HEAD.**—The hardest heading cabbage in existence, and of excellent quality, white, crisp and tender. The heads are round, fine-grained and a good keeper. Pkt. 10c; oz. 40c; ¼ lb. \$1.50.

**HENDERSON'S SUCCESSION.**—One of the finest cabbages in existence, whether for medium, main crop or winter use. Pkt. 5c; oz. 30c; ¼ lb. \$1.00.

**PREMIUM FLAT DUTCH.**—Excellent winter variety. Pkt. 5c; oz. 30c; ¼ lb. \$1.00.

**BURPEE'S SUREHEAD.**—Heads remarkably uniform, very hard and firm. A good keeper. Pkt. 5c; oz. 30c; ¼ lb. \$1.00.

**ALL SEASONS.**—An early drumhead, sure headings, solid variety. Pkt. 5c; oz. 30c; ¼ lb. \$1.00.

**FOTTLER'S IMPROVED BRUNSWICK.**—An excellent early drumhead variety, produces a firm and solid head. Pkt. 5c; oz. 30c; ¼ lb. 90c.

**MAMMOTH RED ROCK.**—Best and deepest blood red. Pkt. 10c; oz. 35c.

**WARREN STONE MASON.**—A fine late variety. In reliability for heading, no cabbage surpasses it; an excellent sort to carry through the winter. Pkt. 5c; oz. 40c;  $\frac{1}{4}$  lb. \$1.50.  
**SAVOY, SUTTON'S BEST OF ALL.**—Fine curled leaves, delicate flavor. Pkt. 5c; oz. 40c.  
**MIXED VARIETIES.**—A large packet of all the above mixed, 5c; oz. 25c;  $\frac{1}{4}$  lb. 80c; lb. \$2.50.

### Carrots

**EARLY FRENCH FORCING.**—Very early and small. Pkt. 10c; oz. 20c;  $\frac{1}{4}$  lb. 60c.  
**OXHEART.**—Very thick, enormous cropper. Pkt. 5c; oz. 20c;  $\frac{1}{4}$  lb. 60c; lb. \$2.00.  
**IMPROVED DANVERS.**—Best main crop variety, fine quality, a great yielder. Pkt. 5c; oz. 20c;  $\frac{1}{4}$  lb. 60c; lb. \$2.00.  
**LONG ORANGE IMPROVED.**—Roots large and long, yields large crops. Pkt. 5c; oz. 20c;  $\frac{1}{4}$  lb. 60c; lb. \$1.75.  
**CHANTENAY.**—Early, of a rich dark orange color, fine for bunching. Pkt. 5c; oz. 20c;  $\frac{1}{4}$  lb. 60c; lb. \$2.00.  
**LARGE WHITE BELGIAN.**—Very large, good keeper, fine for stock. Pkt. 5c; oz. 15c;  $\frac{1}{4}$  lb. 50c; lb. \$1.50.

### Cauliflower

**IMPERIAL.**—Very fine, early, large heading variety. Pkt. 10c;  $\frac{1}{4}$  oz. 50c; oz. \$1.75.  
**EARLY FAVORITE.**—One of the best large growing, early kind, forming solid heads. Pkt. 15c;  $\frac{1}{4}$  oz. 50c; oz. \$1.75.  
**HENDERSON'S EARLY SNOWBALL.**—An extremely early dwarf variety, producing large white heads of the finest quality. Pkt. 15c;  $\frac{1}{4}$  oz. 60c; oz. \$2.00.  
**EARLY DWARF ERFURT.**—Very early dwarf, compact heads, tender and delicious. Pkt. 15c;  $\frac{1}{4}$  oz. 60c; oz. \$1.75.  
**SNOWSTORM.**—New early dwarf variety with beautiful snowy heads. Very early. Pkt. 20c;  $\frac{1}{4}$  oz. 75c; oz. \$2.00.  
**LARGE DANISH.**—Large, white, solid heads, keeps well in dry weather. Pkt. 15c;  $\frac{1}{2}$  oz. 90c; oz. \$1.75.  
**PARIS EARLY.**—A popular white sureheading variety. Pkt. 10c;  $\frac{1}{2}$  oz. 65c; oz. \$1.25.  
**MIXED CAULIFLOWER.**—A mixture of all the above kinds, pkt. 10c;  $\frac{1}{2}$  oz. 80c; oz. \$1.50.

### Cress, or Pepper Grass

Extensively used as a small salad. Pkt. 5c; oz. 15c;  $\frac{1}{4}$  lb. 50c.

### Celery

**KELWAY'S GOLDEN SELF-BLANCHING.**—Solid and crisp, in color a beautiful golden yellow; very tender. Pkt. 10c;  $\frac{1}{2}$  oz. 30c; oz. 50c;  $\frac{1}{4}$  lb. \$1.50.  
**WHITE PLUME.**—Crisp, solid and of a sweet, nutty flavor; needs very little earthing up. Pkt. 5c; oz. 20c;  $\frac{1}{4}$  lb. 50c.  
**BOSTON MARKET.**—A favorite variety, peculiarly mild flavor; keeps well. Pkt. 5c; oz. 20c.  
**GIANT PASCAL.**—An easy blanched variety, superior for late use. Pkt. 5c; oz. 20c.  
**ALL KINDS MIXED.**—Pkt. 5c; oz. 15c.

**KELWAY'S GIANT SOLID WHITE.**—See Novelties.

### Sweet Corn

Corn by Parcel Post

If pints and quarts are wanted sent by Parcel Post, add at the rate of 6 cts. for the first quart and 3 cts. for each additional quart.

Large packets prepaid, 10c.

**GOLDEN BANTAM.**—See Novelty page. 10c pkt.  
**GOLDEN NUGGET.**—See Novelty page. 25c pt.  
**GOLDEN ROD.**—See Novelty page. 50c qt.  
**EARLY MAYFLOWER.**—See Novelty page.  
**PEEP-O'DAY SWEET CORN.**—Ten days earlier than any other sort and the sweetest of all Extra Early Corn. The stalks  $3\frac{1}{2}$  to  $4\frac{1}{2}$  feet high and bear from two to five ears; will stand very close planting. Pkt. 10c; pt. 20c; qt. 40c.  
**WHITE COBB CORY.**—The ears are fully as large and well filled as Cory, and just as early, having a clear white grain and white cob. Pkt. 10c; pt. 20c; qt. 40c.  
**PREMO SWEET CORN.**—Very early and of a delicate sweet flavor. Pkt. 10c; pt. 20c; qt. 40c.  
**EARLY CROSBY.**—The very best early sweet corn, habit dwarf, ears set low, twelve to sixteen rowed and of rich flavor. Pkt. 10c; pt. 20c; qt. 40c.  
**BLACK MEXICAN.**—Late, sweetest of all. Pkt. 10c; pt. 20c; qt. 40c.  
**COUNTRY GENTLEMAN.**—The sweetest and most tender of all sweet corns. Kernels and cob pure white; cob small, kernels deep; ears average twelve inches in length. Pkt. 10c; pt. 20c; qt. 40c.  
**STOWELL'S EVERGREEN.**—A late standard variety, ears very large, keeps green till cold weather. Pkt. 10c; pt. 20c; qt. 40c.  
 Corn ordered by mail is subject to an extra charge. See page 2. Write for bushel rates.

### Fodder and Field Corn

**SWEET FODDER CORN.**—This variety excels all others for feeding to stock. Qt. 30c; pk. \$1.75.  
**LEAMING.**—An early, hardy, dented flint variety. It is tall and leafy with large ears, will mature in New England. The best for ensilage. Qt. 25c; pk. \$1.75.  
**EARLY YELLOW MAINE.**—A fine yellow variety, long ears, matures early. Qt. 30c; pk. \$1.75.  
**LONGFELLOW.**—The best early yellow variety, having long ears, large kernels and small cob; yields immense crop. Safe to plant in New England. Qt. 30c; pk. \$1.50.  
**LARGE YELLOW FLINT.**—Best Flint corn either for crop or silo, stalks from 8 to 10 feet high, ears 12 to 18 inches in length. Qt. 30c; pk. \$1.75.  
**MAMMOTH 90 DAY YELLOW FLINT.**—A fine, early, yellow variety, extra large ears. Stalks 10 to 12 feet. Matures early. Qt. 30c; pk. \$1.75.  
**EUREKA ENSILAGE CORN.**—Grows from 12 to 15 feet high and will produce more tons of good material for the silo than any other kind. Also very productive of ears. Our seed is the genuine Eureka grown from stock seed procured from Ross Bros., the originators. Qt. 30c;  $\frac{1}{2}$  pk. 90c; pk. \$1.50; bu. \$4.75.



**EARLY SANFORD.**—Early white flint variety for ensilage or grinding. Qt. 30c; pk. \$1.75.

**EXTRA EARLY YELLOW MAINE PRIZE.**—Matures very early, long ears, large kernels. Our seed is from the originator who has received first premium for the past three years at Maine Seed Improvement Association. Pkt. 10c; qt. 35c; ½ pk. \$1.00; pk. \$2.00.

### Pop Corn

**TATTOOED YANKEE.**—A great novelty, early and superior quality. Pkt. 10c.

**BLACK BEAUTY.**—See Novelty page.

**RED BEAUTY.**—See Novelty page.

**WHITE RICE.**—One of the best. Pkt. 10c.

**GOLDEN TOM THUMB.**—A great novelty. Stalks grow about 18 inches high. Pkt. 10c.

### Cucumbers

**WHITE WONDER.**—See novelty page.

**LEMON.**—See Novelty page.

**ALL SMOOTH.**—New variety. See Novelty page.

**DAVIS PERFECT.**—See Novelty page.

**BURPEE'S FORDHOOK FAMOUS.**—See Novelty page.

**EARLY CLUSTER.**—Bears in clusters, early and productive. Pkt. 5c; oz. 10c; ¼ lb. 35c; oz. 10c; ½ lb. 35c; lb. \$1.25.

**WHITE SPINE IMPROVED.**—A great bearer, an excellent variety for the table. Pkt. 5c; oz. 15c; ¼ lb. 40c; lb. \$1.25.

**IMPROVED LONG GREEN.**—Fruit above twelve inches long, tender and excellent. Pkt. 5c; oz. 10c; ¼ lb. 35c; lb. \$1.00.

**BOSTON PICKLING.**—Splendid for pickles. Pkt. 5c; oz. 10c; ¼ lb. 35c; lb. \$1.00.

**THE EMERALD.**—An early variety with dark green skin free from spines. Pkt. 10c; oz. 20c; ¼ lb. 40c; lb. \$1.25.

**CUMBERLAND CUCUMBER.**—This new variety is of the Hardy White Spine type, is a rapid, strong and vigorous grower and very prolific in fruit. The flesh is firm, but very crisp and tender at all stages, as choice as a slicing variety as it is for pickles. Pkt. 5c; oz. 15c; ¼ lb. 40c; lb. \$1.25.

**JAPANESE CLIMBING.**—Pkt. 10c; oz. 20c.

**WEST INDIA GHERKIN.**—Grown exclusively for pickling. Pkt. 5c; oz. 15c; ¼ lb. 40c.

**ALL VARIETIES MIXED.**—5c pkt.; 10c oz.; 30c; ¼ lb. 90c.

### Dandelion

**IMPROVED.**—Large leaved. Pkt. 10c; oz. 40c;

### Endive

**GREEN CURLED.**—One of the best salad plants. Pkt. 5c; oz. 15c; ¼ lb. 50c.

### Kale

**GREEN CURLED SCOTCH.**—A round dwarf variety rarely exceeding eighteen inches in height but spreading out under good cultivation to three feet. Pkt. 5c; oz. 10c; ¼ lb. 40c; lb. \$1.25.

### Kohlrabi, or Turnip Cabbage

**EARLY PURPLE.**—Tender, best market sort. Pkt. 5c; oz. 20c; ¼ lb. 75c.

### Leek

**GIANT CARENTAN.**—A large variety of superior quality. Pkt. 5c; oz. 25c; ¼ lb. 75c.

### Lettuce

**BEEFSTEAK.**—See Novelty page.

**BRITTLE-ICE (new).**—See Novelty page.

**WAYAHEAD (new).**—Pkt. 10c.

**UNRIVALLED (new).**—Pkt. 10c.

**MAY KING.**—See Novelty page.

**BOSTON CURLED.**—The best curled variety. Pkt. 5c; oz. 20c; ¼ lb. 60c.

**BOSTON MARKET.**—Forms fine, perfect heads, crisp and tender, grows very compact, good for forcing. Pkt. 5c; oz. 20c.

**BIG BOSTON.**—Is of unusual size and solidity of head. Pkt. 5c; oz. 25c.

**WHITE SEEDED TENNIS BALL.**—A fine early sort and very hardy. Pkt. 5c; oz. 15c.

**BLACK SEEDED TENNIS BALL.**—Fine for forcing. Pkt. 5c; oz. 20c.

**EARLY CURLED SIMPSON.**—Curled variety. Fine for cutting. Pkt. 5c; oz. 15c.

**HANSON.**—Large, solid heads and fine flavor. Pkt. 5c; oz. 20c.

**ICEBERG.**—Quick growing, large head. Pkt. 5c; oz. 25c.

**PRIZE HEAD.**—Large, loose heads tinged with red; very fine. Pkt. 5c; oz. 20c.

**CHOICE VARIETIES** mixed in one package, try it. Pkt. 5c; oz. 15c; ¼ lb. 50c.

### Melon (Musk)

**METCALF'S "THOUSAND DOLLAR" MELON.**—See Novelty page. Pkt. 10c.

**ROCKY FORD MUSK MELON.**—The fruit is oval, slightly ribbed, densely covered with coarse netting, greenish flesh and delicious flavor. Pkt. 5c; oz. 10c.

**OSSAGE GEM.**—Similar to the Rocky Ford. The flesh is salmon color, of the highest quality in both sweetness and flavor. Pkt. 5c; oz. 15c.

**MILLER CREAM.**—The fruits are large and round with a light green nettled skin, fine flavor. Pkt. 5c; oz. 10c.

**BANANA.**—The fruits are from fifteen to twenty inches in length, having a banana-like aroma, of delicious flavor. Pkt. 10c; oz. 25c.

**ALL VARIETIES MIXED.**—5c pkt.; 10c oz.

**BURPEE'S SPICY CANTALOUPE.**—See Novelty page.

### Melon (Water)

**YANKEE.**—See Novelty page. Pkt. 10c.

**MOUNTAIN SWEET.**—One of the best for northern cultivation, oblong, fruit dark green.

**COLE'S EARLY.**—Extra early, best for New England.

**SWEETHEART.**—This new melon is uniformly of good size, skin light green mottled. The bright red flesh is solid and sweet.

**CITRON.**—The standard for preserves.

**COLORADO CITRON.**—Fine for preserves.

Price each, pkt. 5c; oz. 10c;  $\frac{1}{4}$  lb. 30c.

**ALL VARIETIES MIXED.**—Pkt. 5c; oz. 10c.

### Martynia

The pods when young and tender are used for pickles. Pkt. 10c; oz. 35c.

### Okra

Excellent for soups, stews, etc. They impart a rich flavor. Pkt. 5c; oz. 10c;  $\frac{1}{4}$  lb. 30c.

### Onions

**LARGE EARLY RED.**—A close-grained, mild-flavored variety. A good keeper. Pkt. 5c; oz. 30c;  $\frac{1}{4}$  lb. \$1.00.

**BURPEE'S YELLOW DANVERS.**—One of the very best varieties for general crops. Succeeds well in New England. True stock. Pkt. 5c; oz. 30c;  $\frac{1}{4}$  lb. \$1.00; lb. \$3.25.

**LARGE RED WETHERSFIELD.**—Very large, of finest flavor, keeps well. Pkt. 5c; oz. 30c;  $\frac{1}{4}$  lb. \$1.00; lb. \$3.25.

**BEST YELLOW GLOBE DANVERS.**—(True stock.) The best variety for general crop, an early, round variety, yield large crops and keeps well. We ask attention to the seed we offer and recommend it as a superior quality. Pkt. 5c; oz. 30c;  $\frac{1}{4}$  lb. \$1.10; lb. \$3.75.

**PRIZE TAKER.**—A large yellow globe onion, sweet, mild and tender. Pkt. 5c; oz. 35c;  $\frac{1}{4}$  lb. \$1.25.

**BARLETTA.**—Very early white onion, fine for pickles. Pkt. 5c; oz. 35c;  $\frac{1}{4}$  lb. \$1.25.

All the above varieties mixed, 5c pkt.; 25c oz.

### Onion Sets

If wanted sent by Parcel Post, add at rate of 6 cts. for first quart and 3 cts. for each additional quart.

**YELLOW SETS.**—The best for general use. The small bulbs are used in the spring for setting out, in place of sowing the seed, and produce large onions earlier than can be done by the seed. Qt. 30c; pk. \$1.75.

**RED SETS.**—Same price as above.

### Parsnips

**KELWAY'S DON.**—Crop failed.

**HOLLOW CROWN.**—Good old sort, fine flavor.

**LONG SMOOTH WHITE.**—Smooth and quite large.

Each, per pkt. 5c; oz. 15c;  $\frac{1}{4}$  lb. 50c;

### Parsley

**EXTRA FINE CURLED.**—Fine for garnishing. Pkt. 5c; oz. 15c;  $\frac{1}{4}$  lb. 40c.

### Peanuts

**MAMMOTH VIRGINIA.**—Pkt. 10c; pt. 25c.

Inoculate this  
Seed with  
**FARMOGERM.**

Garden  
Peas  
Peas, by Parcel  
Post

Inoculate this  
Seed with  
**FARMOGERM.**

If pints and quarts are wanted by Parcel Post, add at the rate of 6 cts. for first quart and 3 cts. for each additional quart.

Extra large packet, 10c, postpaid. Write for bushel rates.

**EARLY MORN.**—See Novelty page.

**PIONEER.**—See Novelty page.

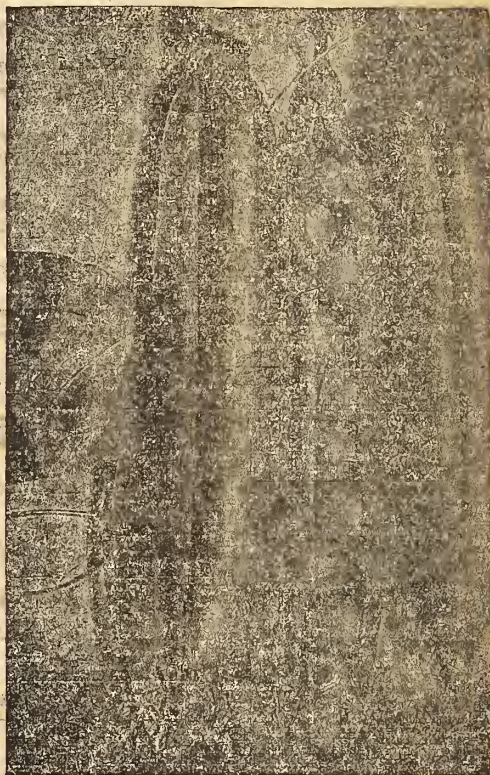
**QUITE CONTENT.**—See Novelty page.

**BURPEE'S BEST EXTRA EARLY.**—One of the best of the early, round varieties. Pkt. 10c. Crop failed.

**NOTT'S EXCELSIOR.**—A fine new extra early dwarf wrinkled pea, producing in profusion, long, handsome pods, closely packed with large peas of fine flavor. An improvement on American Wonder, being more vigorous and prolific, with larger pods and more peas. Height, 15 ins. Pkt. 10c; pt. 25c; qt. 45c; pk. \$3.25.

**BOSTON UNRIVALLED.**—Improved Telephone, extra large podded, very prolific. Pt. 25c; qt. 45c; pk. \$3.25.

**SUTTON'S EXCELSIOR PEA.**—A new early dwarf English variety. Pods very large and



**Pea Prince Edward**  
well filled with delicious flavored peas. Grows about 18 inches high. Pkt. 10c; pt. 25c; qt. 50c; pk. \$3.50.

**IMPROVED AMERICAN WONDER.**—The earliest and very best wrinkled pea known, growing about 15 ins. high, in productiveness, flavor and quality it is unsurpassed. Pkt. 10c; pt. 25c; qt. 45c; pk. \$3.25.

**DWARF TELEPHONE.**—Is the famous Telephone without its long vines. Pods dark green, frequently measure five inches, well adapted to marketing. Pkt. 10c; pt. 25c; qt. 50c; pk. \$3.50.

**THOMAS LAXTON.**—A new extra early large podded pea, very hardy and productive. As early as the Gradus and the pods a little larger and a deeper green. Pkt. 10c; pt. 25c; qt. 50c; pk. \$3.50.

**GRADUS OR PROSPERITY.**—Large, handsome pods resembling Telephone in size and shape, well filled with large peas, ripening with the earliest, of vigorous habit, very quick to germinate and push to maturity. The best extra early wrinkled pea ever introduced. Height 3 ft. Pkt. 10c; pt. 25c; qt. 50c; pk. \$3.25.

**ALDERMAN.**—A fine large pea of the Telephone type. Pkt. 10c; pt. 25c; qt. 45c; pk. \$3.25.

**BLISS EVERBEARING.**—A splendid general cropper, with large, well-filled pods, very sweet. Height 2 ft. Pkt. 10c; pt. 20c; qt. 40c; pk. \$3.00.

**IMPROVED STRATAGEM.**—The vines are strong and vigorous and covered with immense pods, filled with large, dark green peas of the finest quality. Pkt. 10c; pt. 25c; qt. 45c; pk. \$3.15.

**PRINCE EDWARD.**—An extra large podded variety, vines five feet high, pods are large, filled with enormous peas, tender and sweet. Pkt. 10c; pt. 25c; qt. 50c; pk. \$3.25.

**ADMIRAL DEWEY PEA.**—Without exception the largest podded pea grown, a tremendous cropper, dark green pods, of excellent quality. Remarkably healthy and vigorous, producing abundance of pods of very large size and well filled. Height 3½ ft. The very best of the late varieties. Pkt. 10c; pt. 25c; qt. 45c; pk. \$3.25.

**TELEPHONE.**—Immensely productive of the finest quality, pods of large size and filled with large, delicious peas. Pkt. 10c; pt. 25c; qt. 45c; pk. \$3.15.

**WHITE CANADA FIELD.**—25c qt.; \$1.50 pk.; \$5.50 bu.

**FOUR GOOD DWARF PEAS.**—Dwarf Champion, Little Marvel, McLean's Advancer, Yorkshire Hero. Large pkt. 10c; pt. 25c; qt. 45c.

### Pumpkins

**LARGE FIELD.**—The common large yellow, good for stock. Pkt. 5c; oz. 10c; ¼ lb. 30c; lb. \$1.00.

**PUMPKIN, WINTER LUXURY.**—We consider this the best pumpkin grown for making pies, medium in size, very finely netted, and in color it is golden russet. Pkt. 5c; oz. 15c; ¼ lb. 35c; lb. \$1.25.

**GOLDEN OBLONG.**—Fine for pies. Pkt. 5c; oz. 10c; ¼ lb. 30c.

**SUGAR.**—A small variety, fine-grained and sweet. Pkt. 5c; oz. 10c; ¼ lb. 35c; lb. \$1.00.

**PUMPKIN, KING OF MAMMOTHS.**—Grows to enormous size, a splendid keeper, always a prize winner at fairs. Pkt. 10c; oz. 25c.

**CHOICE MIXED.**—Mixed in one package. Pkt. 5c; oz. 10c; ¼ lb. 25c; lb. 90c.

**GIANT PUMPKIN MIXED.**—All the known mammoth varieties, mixed. pkt. 10c; oz. 25c.

**LARGE CHEESE.**—Pkt. 5c; oz. 10c; ¼ lb. 25c.

### Pepper

**SWEET MOUNTAIN.**—Large and fine. Pkt. 10c; oz. 35c.

**LARGE BELL.**—Large, bright red, a handsome variety. Pkt. 10c; oz. 40c.

**FINE CHOICE VARIETIES.**—Mixed in one package. Pkt. 10c; oz. 30c.

### Radish

**VICK'S SCARLET GLOBE.**—Best of the globe varieties.

**CRIMSON GIANT GLOBE.**—Large size, remains solid a long time.

**FRENCH BREAKFAST.**—A variety of quick growth, mild, tender, olive-shaped.

**EARLY SCARLET GLOBE.**—Small top, very crisp and tender.

**WHITE TIPPED SCARLET GLOBE.**—Early, crisp and tender.

**EARLY SCARLET TURNIP.**—Round, scarlet, mild and crisp.

**LONG SCARLET.**—Very long and crisp, a standard variety.

**CHARTIER.**—Long crimson, tipped with white.

**ICICLE.**—A handsome, first class early long variety, snow white in color. Very mild.

Price each, pkt. 5c; oz. 15c; ¼ lb. 50c; lb. \$1.50.

**NE PLUS ULTRA.**—One of the best round, red Radishes. Pkt. 5c; oz. 15c; ¼ lb. 60c; lb. \$1.75.

**MIXED RADISH.**—All the above kinds mixed. 5c pkt.; 10c oz.; 35c ¼ lb.

### Rhubarb

**VICTORIA.**—Pkt. 5c; oz. 15c; ¼ lb. 75c.

### Salsify, or Vegetable Oyster

**MAMMOTH SANDWICH ISLAND.**—The roots are very large and very delicate in flavor. Pkt. 5c; oz. 15c; ¼ lb. 50c.

### Spinach

**LONG STANDING.**—One of the best varieties, dark green, slow in running to seed.

**VICTORIA SPINACH.**—We can recommend this variety as very large, thick dark green leaf. As early as any other.

Ech. pkt. 5c; oz. 15c; ¼ lb. 40c; lb. \$1.50.

**NEW ZEALAND.**—Pkt. 5c; oz. 15c; ¼ lb. 50c.

### Squash

**SYMME'S BLUE HUBBARD (new).**—See Novelty page. Pkt. 10c; oz. 20.

**MAMMOTH SUMMER CROOKNECK.**—Early, large, fine for summer use. Pkt. 5c; oz. 15c; ¼ lb. 40c; lb. \$1.50.

**NEW MAMMOTH WHITE BRUSH SCALLOPED.**—The earliest summer sort. Pkt. 5c; oz. 15c; ¼ lb. 50c; lb. \$1.50.

**EARLY PROLIFIC ORANGE MARROW.**—No variety can compete with it for earliness, very productive. Pkt. 5c; oz. 15c; ¼ lb. 40c; lb. \$1.50.

**BOSTON MARROW.**—A standard early fall squash, rich orange color, sweet and dry. Pkt. 5c; oz. 15c; ¼ lb. 50c; lb. \$1.25.

**HUBBARD.**—Standard winter squash, an excellent keeper. Pkt. 5c; oz. 15c; ¼ lb. 40c; lb. \$1.50.

**MARBLEHEAD.**—An excellent winter variety, remarkably sweet and dry. Pkt. 5c; oz. 15c; ¼ lb. 40c; lb. \$1.50.

**GOLDEN HUBBARD.**—A true Hubbard except in color, which is a beautiful orange red. Pkt. 5c; oz. 15c; ¼ lb. 40c; lb. \$1.50.

**WARTED HUBBARD.**—This excellent strain of Hubbard squash grows to a large size, is blackest green in color, with warty knobs all over it. Pkt. 5c; oz. 15c; ¼ lb. 40c; lb. \$1.50.

**DUNLAP'S EARLY MARROW.**—No variety can compete with it for earliness, excellent quality and a good keeper. Pkt. 5c; oz. 15c; ¼ lb. 40c; lb. \$1.50.

**THE FAXON.**—Matures early, one of the best fall and winter varieties, of medium size, sweet and dry. Pkt. 5c; oz. 15c; ¼ lb. 40c; lb. \$1.50.

**DELICIOUS.**—A superior fall and winter variety that for thickness of flesh and richness of flavor is unsurpassed. Color a handsome green, weighing from 5 to 10 lbs. Pkt. 5c; oz. 15c; ¼ lb. 50c; lb. \$1.75.

**ESSEX HYBRID TURBAN.**—Productive, with very hard shell, of excellent flavor, and keeps well. Pkt. 5c; oz. 15c; ¼ lb. 40c; lb. \$1.50.

**MAMMOTH WHALE.**—Largest and heaviest of all squashes, fine for exhibition. Pkt. 10c; oz. 20c.

**MAMMOTH CHILL.**—Grows to an immense size. Pkt. 5c; oz. 20c; ¼ lb. 80c.

**ENGLISH VEGETABLE MARROW.**—5c pkt.; 15c oz.; 40c ¼ lb.

**MIXED SQUASHES.**—All above varieties mixed. 5c pkt.; 10c oz.; 30c ¼ lb.; \$1.00 lb.

### Tomato

**JOHN BAER.**—The wonderful new tomato. See Novelty Page. Pkt. 10c; 40c oz.

**DWARF CHAMPION.**—A very early variety, beautiful, solid fruit, fine flavor. Pkt. 5c; oz. 30c; ¼ lb. 80c.

**NEW STONE.**—Large, perfectly smooth, scarlet, one of the best. Pkt. 5c; oz. 25c; ¼ lb. 70c.

**LIVINGSTONE FAVORITE.**—Bright red, good size and smooth. Pkt. 5c; oz. 25c.

**LIVINGSTONE'S BEAUTY.**—Very glossy, crimson in color, slight tinge of purple, early, free from rot, bears handling remarkably well. Pkt. 5c; oz. 30c.

**BONNEY BEST.**—Early productive, smooth and uniform in size. Pkt. 10c; oz. 30c.

**CHALK'S EARLY JEWEL.**—The earliest tomato in cultivation. Large, smooth and fine flavor, flesh bright scarlet. Pkt. 10c; oz. 40c.

**BURPEE'S EARLIEST PINK.**—Best of the early pink varieties. Pkt. 10c; oz. 40c.

**PONDEROSA.**—Very large, solid and of good bavor. Pkt. 10c; oz. 40c.

**ADMIRAL DEWEY (new).**—See Novelty page.

**EARLIANA.**—Best early. Pkt. 10c.

**YELLOW PEAR.**—For preserving. Pkt. 10c.

**RED PEAR.**—Pkt. 10c.

**HUSK OR STRAWBERRY.**—Small yellow fruit used for preserves. Pkt. 10c.

**TWENTY CHOICE VARIETIES MIXED.**—Including all the above varieties and others. Pkt. 5c; oz. 25c; ¼ lb. 75c.

**SMALL FRUITED VARIETIES.**—Mixed, 5c pkt.; 25c oz.

### Turnips

**EARLY RED PURPLE TOP.**—Very early, sweet, mild and a rapid grower. Pkt. 5c; oz. 15c; ¼ lb. 50c; lb. \$1.50.

**WHITE EGG.**—Excellent early variety, egg shaped, mild bavor. Pkt. 5c; oz. 15c; ¼ lb. 50c; lb. \$1.50.

**EXTRA EARLY WHITE MILAN.**—The best of the white varieties, early and sweet. Pkt. 5c; oz. 15c; ¼ lb. 60c; lb. \$2.00.

**EARLY RED MILAN.**—Best of the red top varieties, early and sweet. Pkt. 5c; oz. 15c; ¼ lb. 60c; lb. \$2.00.

### Swede, or Ruta Baga

**IMPROVED PURPLE TOP.**—Very early, free growing, the best Purple Top Swede in cultivation. Pkt. 5c; oz. 15c; ¼ lb. 50c; lb. \$1.75.

**CARTER'S IMPERIAL.**—Very popular, flesh very solid and a fine keeper. Pkt. 5c; oz. 15c; ¼ lb. 50c; lb. \$1.75.

**SKIRVING'S PURPLE TOP.**—A standard variety, hardy and productive. Pkt. 5c; oz. 15c; ¼ lb. 50c; lb. \$1.75.

**LARGE WHITE FRENCH.**—The best of the white varieties, sweet and excellent. Pkt. 5c; oz. 15c; ¼ lb. 50c; lb. \$1.75.

See Novelty page for three fine Swedes—Perfect Model, No Plus Ultra and Kelway's Mammoth.

### Herbs

**SAGE**

**SUMMER SAVORY**

**SWEET MARJORAM**

**LAVENDER**

**THYME**

**CARAWAY**

**CATNIP**

**HOREHOUND**

**WORMWOOD**

Each, per pkt. 10c; oz. 35c.

**CHIVES.**—Roots by mail, prepaid, 20c.

**TOBACCO, CONNECTICUT LEAF.**—10c pkt.

### Lawn Seeds

**EVERGREEN LAWN SEED.**—A superior mixture of lawns, tennis courts, etc. Gives a fine, smooth, velvet sward within a few weeks after sowing. Pt. 15c; qt. 30c; pk. \$2.00.

**KIMBALL'S VELVET LAWN GRASS MIXTURE.**—A very fine mixture and will give general satisfaction. Pt. 15c; qt. 30c; pk. \$2.00.

**SHADY SPOT LAWN SEED.**—For shady places and under trees. Pt. 20c; qt. 35c; pk. \$2.25.

**ENGLISH LAWN SEED.**—Imported mixture, makes the finest lawn. Pt. 20c; qt. 35c; pk. \$2.00.

We are prepared to make special mixtures for Tennis Courts, Golf Links, Shady Lawns, etc.

**WHITE CLOVER.**—50c lb.

**KENTUCKY BLUE GRASS.**—For lawns, 25c lb.

## Farm and Field Seeds



A Field of Alfalfa. Hay Caps Prevent the Leaves from Falling Off

### Grasses, Grains, Clovers, Etc.

(Prices on all field seeds subject to change.)

We wish our customers to know that we deal only in the very highest grade of grass seed, quality and purity our first considerations. Every farmer has learned to his sorrow that the ordinary and low priced grass seed contain more or less foul weeds, chaff, sand, etc. Our choice Timothy and Red Clover guaranteed 99% to 99.5% pure U. S. Government test.

**TIMOTHY.**—Very best, lb. 12c; pk. \$1.25.

Write for bushel prices and samples.

**TIMOTHY, PINE TREE STATE BRAND.**—Extra choice clean, plump seed. Lb. 12c; pk. \$1.25; bu. \$4.75.

**TIMOTHY AND ALSIKE MIXED.**—Extra fancy large plump berries, no inferior seed. Lb. 14c. Send for sample.

**RED CLOVER.**—32c and 34c lb.

**ALSIKE CLOVER.**—31c and 32c lb.

**FANCY RED TOP.**—Re-claimed. 18c and 20c lb.

**RED TOP, UNHULLED.**—14c lb.

**HUNGARIAN.**—8c lb.; 90c pk.

**JAPANESE MILLET.**—12c lb.

**BARLEY.**—85c pk.

**JAPANESE BUCKWHEAT.**—85c pk.

**SELECTED SEED OATS.**—Write for prices.

**MONTANA OATS.**—Very large and plump.

**DWARF ESSEX RAPE.**—Per lb., 25c.

**SPRING WHEAT.**—\$1.25 peck.

**WINTER RYE.**—85c.

**ALFALFA.**—The most valuable member of the Clover family, it enriches the soil and is rich in protein. When established it will last many years and can be cut three or four times in a season. 25c and 26c lb.

**SWEET CLOVER.**—A valuable sowing for soiling and for ensilage and bees. 30c lb.

**UNFLOWER.**—Mammoths Russian, 15c lb.

### Canada Field Peas and Oats for Fodder

Sow at the rate of one bushel of peas to two bushels of oats per acre. Makes profitable fodder from June to August. Peas per peck, \$1.50; \$5.50 bu.



**PINE TREE TIMOTHY.**—The economy of sowing high grade, extra re-cleaned Timothy seed explains why "Pine Tree" has met with such favor. It meets the requirements of careful farmers. Costs only a trifle more than inferior qualities.

Write for prices.

**EARLY WHITE PEARL OATS.**—Average yield about 75 bushels to the acre. Has yielded as high as 110 bushels from a measured acre. Has won first prize at the Maine Seed Improvement Association for the past four successive years. True stock, Maine grown seed. Sold out.

**PINE TREE STATE BRAND OATS.**—One of the most productive oats we have ever introduced. The straw is of good height, and does not readily lodge, ripens uniformly, free from rust. Price, pk. 65c; ½ bu. \$1.00; bu. \$1.75.

**EARLY PRIDE OATS.**—These oats are very heavy and the grain is extra large and plump. If you wish to raise big, white oats that will grade high in the market, you will be pleased with these oats. \$1.75 bu.

We shall be pleased to quote prices by mail and send samples.

Prices on above Field Seeds, etc., subject to market fluctuations and are net cash, no discount. Samples on application. Write for bushel rates.

**ODORLESS LAWN AND GARDEN FERTILIZER.**—This superior dressing is so prepared that it acts gradually throughout the season, and produces a luxuriant growth. It is far superior to strawy manure, contains no foul weeds and less expensive and is easily applied at all seasons. An excellent fertilizer for lawns, kitchen gardens, fruit trees, flower beds and house plants. Price 5c lb.; 10-lb. bag, 45c; 25-lb. bag, \$1.00; 50-lb. bag, \$2.00; 100-lb. bag, \$3.50.

Prices on field seed subject to change without notice.

# FARM AND FIELD SEEDS

## FOOD WILL WIN THE WAR—PRODUCE IT

**FIELD CORN.**—It pays to use good seed corn.

**MAMMOTH GOLDEN NUGGET FLINT CORN, (NEW).**—The largest and most prolific Yellow Flint Corn grown. Ripens in New England. The ears are often 12 to 13 inches long and over 6 inches round and weighs over a pound. This corn will mature perfectly in a normal season and produce immense yields on good soil. The fodder is of excellent quality and the quantity produced is very large. Supply very limited. Large trial packet 15c; qt. 35c; 4 qt. \$1.25. For other varieties see page 12.

**HUNGARIAN.**—Sow one bushel to the acre. Also called Hungarian Grass; popular for Summer forage purposes; it grows well on light soil and withstands heat and drought; valuable as a catch-crop for hay, and may be sown up to August.

**BARLEY.**—Make a liberal sowing of barley this season, we have some choice seed.

### SPRING WHEAT

Spring wheat can be raised anywhere in the northeastern states as well as in the West. At present prices of wheat it should prove a profitable crop. Sow as early as possible using 2½ to 3 bushels of seed per acre.

**MARQUIS.**—A very early beardless wheat that succeeds well in the east, producing larger yields than any other kind. This is due to its earliness and freedom from rust. Marquis Wheat is from one week to ten days earlier than Red Fife and this fact alone should induce many of our customers to grow it this spring. Marquis Wheat has out-yielded all other Spring Wheats grown under the same conditions of soil, cultivation and climate. The increased yield varies from 5 to 10 bushels. Price pk., \$1.25; ½ bu., \$2.25; bu. \$4.25.

### MANGEL WURZEL

An invaluable crop for stock-feeding; highly relished by cattle, increasing the yield of milk cows. Sow from April to June, on well cultivated, deep, rich soil, in drills 24 to 30 inches apart; six to eight pounds of seed are required for an acre.

**LEVIATHAN LONG RED.**—The largest and heaviest cropper of all the large red sorts.

### DWARF ESSEX RAPE

Largely grown as a fattening food for sheep in the Autumn. It is also especially desirable for pasturing hogs during the Summer months. In the Northern States seed may be sown at any time, from early spring until the end of August. Sow ten to twelve pounds to the acre broad cast, or four to five pounds to the acre in drills 15 inches apart. 25c lb., 10 lbs. or over 20c lb.

### BUCKWHEAT

**JAPANESE.**—Excels all other varieties in yield and earliness and can be grown farther north than any other sort. Large grain and an enormous yield.

### MAMMOTH RUSSIAN SUNFLOWER

Valued by all farmers and poultry-breeders who have tried it, as an excellent and cheap food for fowls. Fowls eat it greedily and attain a stronger and healthier condition than on any other food. The leaves make a capital fodder. Sow five pounds to the acre.

### CORN FERTILIZER POTATO FERTILIZER GRAIN AND GRASS FERTILIZER

**FINE GROUND BONE.**—6c lb.

**NITRATE OF SODA.**—10c lb.

**RAFFIA.**—For tying shrubs, vegetables, etc.

**SHEEP MANURE, WOOD ASHES.**

Write for our booklet on Farm Seeds and Alfalfa, its free.

We send samples and special prices of Field Seeds and Grasses upon application. We show you our goods and ask your order on a basis of Quality and Price. Fair, isn't it? Think. We have pleased thousands, we can please you. Let us hear from you. You can make no mistake in sending us your order, for you will receive just what you buy.

## CHOICE FLOWER SEEDS AND BULBS



Asters

**Giant Crego.**—See Novelty page.  
**Lavender Gem.**—See Novelty page.  
**Vick's New Branching.**—Magnificent large flowers borne on long stems. The long, broad petals are frequently twisted and curled, giving the blossom the appearance of a large, graceful chrysanthemum. Finest mixed, 10c. White, Pink, Crimson and Lavender, 10c each.  
**New Comet.**—These varieties make a grand display, often carrying thirty-two flowers on one plant, curled and twisted like Japanese chrysanthemums. Mixed, 10c. White, 10c.  
**Temple's Branching.**—A new American strain, producing handsome, large, double flowers on long stems. Finest mixed, 5c.  
**Queen of the Market.**—Very early, many beautiful colors, mixed, 5c.  
**Herman Globe.**—An early variety, choice mixed of many colors, 5c.  
**Chrysanthemum Flowered.**—Very beautiful, the flowers are exceedingly large and very double, mixed, 10c.  
**Victoria.**—One of the best and most popular asters grown. Forms a handsome, pyramidal bush, with perfectly double imbricated flowers on long stems, mixed, 10c. Pure white, very fine, 10c.  
**Bowl or Ball.**—A magnificent class, with perfectly round flowers, about 2½ inches. 10c.  
**Maony Perfection.**—A fine class with large double incurved flowers of great beauty. Choice mixed, 10c.  
**Strich Feather.**—A new class of asters, with long curved fringe-like petals, mixed, 10c. White, 10c.  
**Finest Mixed.**—This collection includes all colors and shades of many choice varieties, 10c.  
**Choice Mixed.**—A fine mixture, 5c.  
**Ionis.**—Free flowering border plant, 5c.  
**Proclinium.**—One of the handsomest everlasting, and used extensively in bouquet of dried flowers, mixed, 5c.

**Ageratum Blue.**—Free flowering; good for beds and pots, 5c.

**Agrostemma.**—Attractive, free-flowering plants of easy culture and excellent for cutting, mixed, 5c.

**Alyssum.**—Sweet scented, white flowers, 5c.

**Amaranthus.**—Highly ornamented foliage and flowering plants of easiest culture. Annual, mixed, 5c.

**Antirrhinum or Snapdragon.**—One of the most beautiful and useful border plants. Half hardy perennial, flowering the first season. Tall mixed, 10c; dwarf mixed, 10c; all kinds mixed, 10c.

**Asperula.**—5c.

**Aquilegia.**—(Columbine)—Popular free-flowering plants, blooming profusely through the spring and early summer. Hardy perennial, mixed, 5c.

**Bachelor's Buttons.**—Emperor William, a fine deep blue, 5c.

**Bachelor's Buttons.**—Various colors, mixed, 5c.

**Double Mixed.**—All colors, 5c.

**Balsam.**—Superb, fine double mixed, 10c.

**Balsam.**—Fine mixed, 5c.

**California Poppy.**—Hardy annual, profusion of rich, single yellow flowers. Mixed, 5c.

**Mandarin.**—Deep yellow, 5c.

**Calendula.**—(Marigold)—Prince of Orange, color intense orange, blooms all summer, 5c.

**Meteor,** beautifully striped, 5c.

**Choice Mixed,** ½ oz. 15c; pkt. 5c.

**Canterbury Bells.**—Best mixed, 5c.

**Coreopsis.**—All shades of yellow, orange and brown, 5c.

**Coronata,** large, fine yellow, 5c.

**Drummond,** large yellow, red spots, 5c.

**Sunshine,** mixture 10c.

**Canary Bird Flower.**—A beautiful climber with bright yellow flowers, 10c.

**Candytuft, White Queen.**—A mass of white flowers, 5c.

**Finest Mixed,** all colors, 5c.

**Empress,** large flowering white, 10c.

**Cannas.**—Handsome foliage, choice mixed, 5c.

**Carnation Marguerite.**—A very large percentage of the flowers come double and of good size, fine form and great beauty. They begin to bloom four months from the time seeds are sown. Finest mixed, 10c.

**Chrysanthemum.**—Glorious and snowy annual, are easily raised from seed, finest mixed, 5c.

**Celosia.**—(Cockcomb)—Dwarf mixed, strikingly brilliant, 5c.

**Clarkia.**—Snowy, hardy annuals of easy cultivation, mixed, 5c.

**Cosmos.**—Mammoth California, mixed, 10c.

**Cobaea Scandens.**—A climber of rapid growth. Flower first season if sown early, 10c.

**Cupha.**—(Cigar Plant)—A fine border plant, bright scarlet, 10c.  
**Dahlia.**—Single mixed, many colors, 5c.  
**Dahlia.**—Double mixed, 10c.  
**Dianthus.**—(China Pink)—Finest mixed, double in great variety of colors, 5c.  
**Heddewigi (Japan Pink)**—Best double, 5c.  
**Datura.**—(Trumpet Flower)—Handsome, bushy plants, covered with deliciously fragrant trumpet-shaped flowers, until late in the fall, mixed, 5c.  
**Dolichos.**—(Hyacinth Bean)—A rapid climber, with clusters of white or purple flowers, 5c.  
**Eschscholtzia.**—Fine for edgings, 5c.  
**Everlasting Flowers.**—10c pkt.  
**Forget-Me-Not.**—(Myosotis)—Beautiful little plants, with bright, star-like flowers; useful for cutting. Succeed best in moist situations. Half hardy perennial, 10c.  
**Gaillardia.**—Greatly admired, blooming from July until frost, choicest mixed, 5c.  
**Gilia.**—Handsome plants with showy flowers. Hardy annual. Finest mixed, in great variety, 5c.  
**Godetia.**—Profuse blooming plants, very showy, deserving more extensive cultivation, 5c.  
**Gourds.**—Ornamental climbers, varieties of singular shaped fruit, mixed, 5c.  
**Orange shape, 5c. Egg shape, 5c.**  
**Grasses.**—Ornamental, all the best mixed varieties, 5c.  
**Gypsophila.**—(Baby's Breath)—Fine to mix with bouquets, 5c.  
**Helianthus.**—(Sunflower).  
**Chrysanthemum, flowered Sunflower, very double, a truly beautiful variety, 10c.**  
**New Red Sunflower.**—10c pkt.  
**New Mammoth Russian, very large, single, 5c.**  
**White Beauty, mammoth heads, white seeds, 5c.**  
**Many fine varieties, mixed, 5c.**  
**Hollyhock.**—One of the oldest garden favorites, which ranks among the finest of our autumn flowers. The beautiful flowers of almost every shade and color, on the tall spikes, are very striking, 10c.  
**Hunulus Japonica.**—(Japan Hop)—Rapid summer climber, foliage very luxuriant, 5c.  
**Ice Plant.**—Pretty trailing plant, with thick succulent foliage covered with transparent globules. Tender annual, 5c.  
**Kochia or Mexican Fire Plant.**—Pkt. 5c.  
**Larkspur.**—Annuals of great beauty, stock flowered all colors, mixed, 5c.  
**Double Rocket, choice mixed, 5c.**  
**Hyacinth, flowered, choice mixed, 5c.**  
**Lobelia.**—Tree flowering and of easy culture, mixed, 5c.  
**Marigold.**—(African)—Planted by everyone, larger flowers than the French, mixed, 5c.  
**French Double Dwarf, finest mixed choice. Mixed, all kinds, 5c.**  
**Marvel of Peru.**—(Four o'clock)—Brilliant, does well in any location, 5c.  
**Mignonette.**—Sweet-scented, large flowering, per oz. 15c; pkt. 5c.  
**Golden Queen, flowers very large and very fragrant, 10c.**  
**Matchet, fine for pot culture, 10c.**  
**Morning Glory.**—Splendid climbers, profusion of bloom, 12 colors, 5c; oz. 25c.  
**Double Mixed.**—Many colors, 5c.  
**Imperial Japanese, of exquisite beauty, and**

enormous size, 10c.

**Dwarf, showy plants, with handsome, large richly-colored flowers, mixed, 5c; oz. 20c.**  
**Moonflower.**—A beautiful climber, 10c.  
**Mimulus.**—(Monkey Flower)—They bloom early from seed, and are treated as annuals, mixed, 5c.  
**Nicotina.**—Fragrant annual with clusters of white, tube-shaped flowers, 5c.  
**Nigela.**—Love in the Mist, 5c.

### Tall Nasturtium

Our seeds of these popular flowers have gained a reputation for brilliancy and variety of color, form and substance of flower, which cannot be surpassed. In our mixture which we make up from separate and distinct sorts will be found a very great variety of most beautiful colors.  
**Choice Mixed.**—Pkt. 5c; oz. 10c; ¼ lb. 30c; lb. \$1.00.  
**Extra Choice Mixed.**—Pkt. 5c; oz. 15c; ¼ lb. 35c; lb. \$1.25.  
**Rainbow Mixture.**—Pkt. 10c; oz. 20c; ¼ lb. 45c; lb. \$1.00.  
**Lobb's.**—This magnificent climber is of unusual vigorous growth, with beautiful foliage and splendid large flowers in the richest and most brilliant colors. Mixed, oz. 15c; pkg. 10c; ¼ lb. 45c; lb. \$1.00.  
**Variegated Leaved.**—The flowers are of many bright colors, in charming contrast to the handsomely variegated foliage. Pkt. 10c; oz. 20c.  
**Madame Gunter's Hybrid Varieties.**—The foliage is mostly dark and forms a striking contrast with the rich colors and shades, many of which are new to this family. Finest mixed, pkt. 10c; oz. 15c; ¼ lb. 40c.  
**Ivy Leaved.**—Choice mixed, pkt. 10c; oz. 20c.  
**Dark Crimson, Scarlet, Deep Maroon, Yellow, Violet, Bluish Rose, Striped Rose, each 5c; oz. 10c.**  
**Collection of seven tall varieties, for 25c.**  
 For other varieties see Novelty page.

### Dwarf Nasturtium

**Prize Mixed Dwarf Varieties.**—Embraces all the best colors; pkt. 5c; oz. 15c; ¼ lb. 35c; lb. \$1.25.  
**Choice Mixed.**—Oz. 10c; pkt. 5c; ¼ lb. 30c; lb. \$1.00.  
**Rainbow Mixed.**—10c pkt.; oz. 20c.  
**King of Tom Thumb.**—Oz. 15c; pkt. 5c.  
**New Chamelcon.**—A grand new variety, flower varying in color, pkt. 10c; oz. 20c.  
**Dark Leaved Sorts.**—Mixed, pkt. 5c; oz. 10c.  
**Spotted Varieties.**—Mixed, pkt. 5c; oz. 10c.  
**Empress of India.**—Best brilliant scarlet, pkt. 10c.  
**Ivy Leaved.**—10c pkt.; 20c oz.  
**Golden Leaved.**—10c pkt.; 20c oz.  
**Variegated Leaved.**—This new Royal Race of Dwarf Nasturtium are very attractive. The leaves are variegated with yellow, white and green. Pkt. 10c; oz. 20c; ¼ lb. 60c.

### PANSIES

**Bugnots.**—This is the finest strain known, finest mixed, 15c.  
**Odier.**—Superb flowers of fine form and beautifully blotched, choice mixed, 10c.  
**Trimardcau or Giant.**—Extra choice strain of vigorous growth and flowers of enormous size, 10c.



- Cassier Giant.**—Large flowers, a rich, showy strain, choice mixed, 10c.  
**French Mixed.**—A fine mixture in a great variety of choice colors, 10c.  
**Giant Royal Show.**—This is the finest mixture ever produced and of enormous size, 15c.  
**Good Mixed.**—Fine showy flowers, 5c; ¼ oz. 50c.  
**Special Mixed.**—The best strain of large flowering sorts from the leading European growers; a grand variety, finest mixed, 15c.  
**Bugnot, Cassier, Odier and Trimardeau mixed,** large pkt. 15c.  
**Snow Queen.**—A beautiful large white, 10c.  
**Golden Yellow, King of the Blacks, Shining Red, Pure Yellow, Pure White,** each pkt. 10c.  
**Masterpiece.**—New Giant Curled or ruffled pansy, mixed, 15c.

- Portulaca.**—Valuable for bedding, showy colors, mixed, 5c.  
**Petunia.**—Finest single varieties, mixed, 5c.  
**Finest Mixed,** colors mixed in great variety, 10c.  
**Large Flowered,** best mixed, 10c.  
**Fringed,** large fringed varieties, 20c.  
**Double Mixed,** all colors, 20c.  
**Phlox.**—Unequaled showy for bedding, all colors, 5c.  
**Poppy.**—Exceedingly showy annual, making a gorgeous display, fine mixed, 5c; oz. 20c.  
**Carnation Flowered,** mixed, splendid large double, 5c; oz. 15c.  
**Mikado,** double white fringed petals tipped with scarlet, 5c.  
**Admiral.**—Pure white with a broad band of brilliant scarlet around the top, 10c.  
**Paeony Flowered.**—All colors, mixed, 5c.  
**The Shirley.**—Beautiful light shades of white and pink, desirable, 10c; oz. 30c.  
**Scarlet King.**—Very brilliant, 10c.  
**Tulip.**—A magnificent species from Armenia, large flowers of dazzling scarlet, 10c.  
**Scarlet.**—A beautiful bright scarlet, 5c.  
**White Swan.**—Large double, pure white, 5c.  
**Mephisto.**—Deep scarlet with violet spots, 5c.  
**Danebrog.**—Single scarlet with white blotch on each petal, 5c.  
 All the above varieties, mixed, 5c; oz. 25c.

- Ricinus.**—(Caster Bean)—Large tropical plants, ornamental leaved, 5c.  
**Salpiglossis.**—Grandiflora, finest mixed, 5c.  
**Salvia.**—(Scarlet Sage)—An old time favorite red bedder, 10c.  
**Scabiosa.**—(Mourning Bride)—Old time plant, but better and larger, choice mixed, 5c. / Snowball, white extra, 5c.  
**Schizanthus.**—Butterfly flower, 5c.  
**Snapdragon.**—Mixed, 10c. See Antirrhinum.  
**Stock.**—German ten-weeks, double, fine mixed, 10c.  
**Sweet William.**—A well known and popular favorite. Single mixed, 5c; double mixed, 5c.  
**Silene.**—(Catchfly)—A beautiful genus of profuse flowering plants, with bright and attractive flowers, mixed, 5c.  
**Thumbergia.**—A rapid climbing vine, 5c.  
**Venus Looking Glass.**—Finest mixed free flowering hardy annual, blooming the entire season, 5c.  
**Verbena.**—Finest mixed, a splendid strain, 10c.

- Violets.**—Blue, sweet, 10c.  
**Viscaria.**—(Rose of Heaven), 5c.  
**Wild Cucumber.**—(Creeping Jennie)—A rapid climber, 5c.  
**Xeranthemum.**—Showy, everlasting flowers, 5c.  
**Zea.**—Striped leaves, ornamental foliage, 5c.  
**Zinnia.**—Always popular, easily grown, brilliant display all summer, double mixed, 5c.  
**Dwarf Mixed.**—Large flowering, 5c.  
**Single Mixed.**—All colors, 5c.  
**Giant or Robusta.**—Extra large, beautiful double flowers in great variety of colors, 10c.  
**Scarlet Zinnia.**—10c.  
 All above kinds mixed, 5c; oz. 35c.

**Sweet Peas**

**WE ARE HEADQUARTERS FOR SWEET PEAS**

We have grown and selected most of the varieties ourselves and are thus in a position to deal generously with our patrons.  
**Eckford's Finest Mixed.**—Includes the newest and best large flowering varieties of the most beautiful shades and colors. Pkt. 5c; oz. 10c; ¼ lb. 30c; lb. \$1.00.  
**American Beauties.**—This mixture contains only grand, new named varieties of the large flowering type, highly recommended. Pkt. 5c; oz. 10c; ¼ lb. 35c; lb. \$1.25.



**White Spencer**

**Our Gilt Edge or Invincible Mixture.**—This is an up-to-date mixture of sweet peas and contains only grand, new varieties of the large flowering type, embracing a fine assortment of novelties. Pkt. 10c; oz. 15c; 2 ozs. 25c; ¼ lb. 35c; lb. \$1.25, postpaid.  
**Spencer Mixture.**—A mixture of the Spencer type, large fluted flowers, in light shades, pkt. 10c; oz. 25c; ¼ lb. 60c; lb. \$2.00.  
**Rainbow Mixture.**—Best mixture obtainable, all new varieties are included in this mixture. Large pkt. 10c; oz. 15c; ¼ lb. 35c; lb. \$1.25.  
**Burpee's Best Mixed.**—5c; oz. 10c; ¼ lb. 30c; lb. \$1.00.

Collection of 7 distinct varieties, 30c.

Burpee Blend Spencers.—see Novelty page.

See Novelty page for Spencer varieties.

For Spencer varieties see Novelty page.

PRICES OF ALL THE FOLLOWING VARIETIES:—Packet, 5c; oz. 10c; ¼ lb. 30c; un-

less otherwise noted.

America, the brightest blood red striped.

Apple Blossoms, bright rose and pink.

Blanche Burpee, new Giant White, finest white.

Blanche Ferry, extra early, pink and white.

Boreatton, dark, maroon.

Blushing Beauty, delicate, soft pink.

Brilliant, a very brilliant, rich red.

Cardinal, shining crimson-scarlet.

Countess of Radnor, delicate lavender.

Captain of the Blues, nearest approach to blue.

Dorothy Eckford, best pure white.

Dorothy Tennant, rosy heliotrope.

Earliest of All, in full bloom two weeks earlier than any other variety.

Emily Henderson, a fine pure white.

Emily Eckford, reddish mauve.

Firefly, the most brilliant variety yet produced.

Gray Friar, delicate mauve.

Harvard, a deep crimson.

Imperial White, pure white.

Invincible Carmine, the flowers are of an intense shining crimson-scarlet.

Katherine Tracey, a beautiful soft pink, oz. 15c.

King Edward VII, best scarlet.

Lottie Eckford, lavender blue.

Lady Hamilton, best lavender, oz. 15c.

Lovely, soft shell pink, a grand flower, oz. 15c.

Navy Blue, a large size, deep blue.

New Countess, a beautiful shade of lavender.

Othello, deep glossy maroon.

Olympia, soft pink, best in cultivation.

Mars, new, bright scarlet.

Mrs. Eckford, primrose-yellow.

Mrs. Jos. Chamberlain, a large shell-shaped flower, striped and shaded with bright rose.

Mrs. Gladstone, a lovely soft pink.

Primrose, pale primrose-yellow color.

Painted Lady, rose and white.

Prima Donna, best light pink, oz. 15c.

Prince of Wales, deep rose.

Queen of England, grand, pure white.

Sadie Burpee, white, large hooded flower.

Senator, shaded striped chocolate.

Stanley, rich dark maroon.

Solopian, the finest scarlet.

The Bride, a fine large, pure white; oz. 15c.

Wild Rose, best deep rose, pkt. 10c; oz. 20c.

FOR NEW VARIETIES, SEE NOVELTIES.

MIXED SWEET PEAS IN SEPARATE SHADES

Pink Shades.—Light to deep pink.

Red Shades.—Bright rose to dark scarlet.

Lavender and Blue Shades.—Pale lavender to mauve.

White and Primrose Shades.—All the delicate tints.

Each of the above: 5c pkt.; 10c oz.; 30c ¼ lb.; \$1.00 lb.

### Wild Garden Mixed Flower Seed

A splendid mixture of over one hundred varieties of beautiful, free-blooming, hardy growers, which can be offered at a much less price than when sold in separate packages. When flowering commences something new blooms almost daily. Extra large packages, 10c; ½ oz. 15c; oz. 25c; ¼ lb. 60c.

### Everlasting Flowers

The Everlasting Flowers, with their rich, brilliant colors, are very valuable for winter decorations. They should be cut as soon as they come into full bloom, tied in small bunches and dried slowly in the shade. Choice mixed, large package, 10c.

**Japanese Gazon Flower Garden.**—This mixture contains almost every imaginable kind of Annual Flower. It is most interesting to plant and cultivate, because you never know what hour new beauties may spring up and blossom out. It is also useful as an inexpensive way to produce displays on large borders or to sow on hillsides or along lanes or walks. By using this seed liberally it is easy to convert many an unsightly spot into a bower of beauty. For the children nothing is so interesting, as they can pick flowers and bouquets to their hearts' content. Every day furnishes new surprises. Pkt. 10c; 3 pkts. 25c; oz. 30c; ¼ lb. 75c.



**Cinnamon Vine.**—From the Oriental land, is one of the most charming climbers. Beautiful hardy and very fragrant. Grows in sun or shade, wet or dry. Can be grown in the house in the winter. Everyone should plant these lovely vines. No home is complete without them. They stand the hardest winter without injury, and burst forth in all their marvelous splendor early in the spring—as fine a climber as any lover of beautiful flowers can wish. Postpaid, 5c each.

### Dahlias

Will grow in any kind of soil and give continuous bloom from July till after frost. Ours are from finest named sorts. Show, Decorative, Pompon, and Single varieties 12c each, postpaid. Castus.—15c, postpaid.

Jack Rose.—Brilliant crimson red, 20c each.

White, Yellow, Red.—Each 12c.

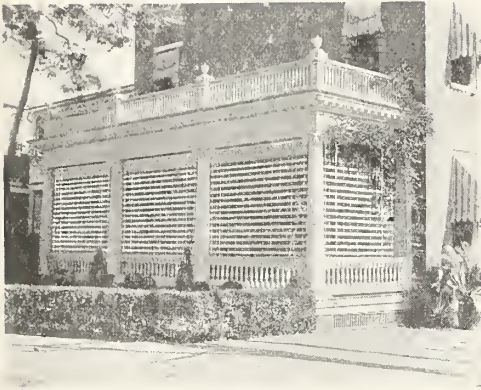
Special offer, one that will please you: 5 for 50c; 12 for \$1.00; 25 for \$1.75. The selection to be left to us, the purchaser paying express charges.

### IMPORTANT

In the back of this catalog you will find an order blank. Cut out on the dotted line, make out your order and mail promptly. We hope there will be something you will want even if only a small amount. Use the enclosed return envelope. We would appreciate the address of some of your friends who plant flower and vegetable seeds.







## NEW VUDOR VENTILATING PORCH SHADES

are the only shades made with a Ventilator. They protect you from the sun, give you delightful seclusion and at the same time you have perfect ventilation on your porch.

The most effective, durable shades made. Come in beautiful, permanent oil colors. They transform a day porch into a sleeping porch at small expense. Write for full information, illustrations in color and name of local dealer.

Hough Shade Corporation, Dept. S., Janesville, Wis.

## FREE FROM WORMS Fruit and Vegetables SPRAY WITH **SWIFT'S** Arsenate of Lead

POWDERED AND PASTE

Potato Bugs, Codling Moths  
and all Leaf Eating Insects

MADE ONLY BY THE

### MERRIMAC CHEMICAL CO.

148 State St., Boston, Mass.

# The Eagle Is Supreme!



## LANTERNS

JUST AS EASILY

## Have Attained Supremacy

BY ACTUAL TEST

## R. E. DIETZ COMPANY

60 LAIGHT ST., NEW YORK, U. S. A.

**GUARANTEE.** We stand ready to replace any Dietz Lanterns showing imperfect construction free of all expense to the user.



### Fuller Milk Pails and Better Butter

Contented cows always give more and better milk than nervous and irritable cows—and nothing so quickly affects a cow's disposition as sore or injured teats. For sore, chapped or injured teats nothing is so good as BAG BALM, the great healing ointment, in the big 50c package.

BAG BALM is also a quick cure for caked or swollen udder, and for Bunches, Stricture, or any cut or bruise. Keep it on hand constantly; it keeps little hurts from getting big.

BAG BALM is sold in large 50c packages by feed dealers and druggists. Write for free book, "Dairy Wrinkles."

Dairy Association Co.  
Lyndonville, Vt.



## BAG BALM

MADE BY THE **ROW-KURE** PEOPLE

**FOOD** WILL WIN THE WAR--  
PRODUCE IT!



**SEED** WILL PRODUCE FOOD  
DON'T WASTE IT!