

WIRING DIAGRAMS

Address:

Owner:

Contractor:

Designer:

Director:

CONTENT

- main page.....1
- content.....2
- specifications.....3
- building plant.....4
- distribution board.....5
- circuit 1 on building plant.....6
- circuits 2-6 on building plant.....7
- circuits 8 and 9 on building plant.....8
- calculation of short circuit.....9
- materials.....10

SPECIFICATIONS

introductory cable

Ground

Voltage

Power

Main fuse

3 copper wires MKEM 10mm

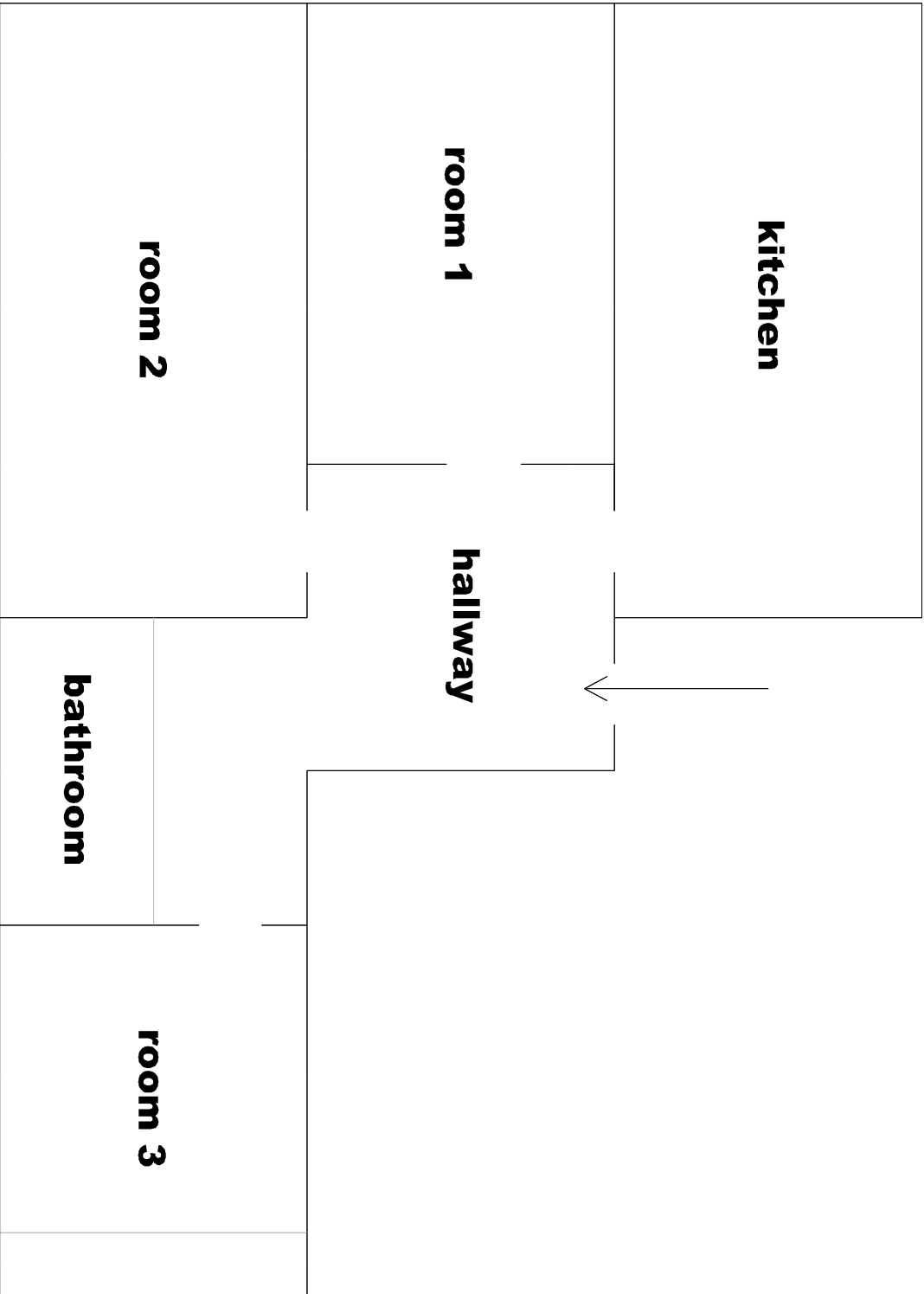
TN-C

230V single-phase

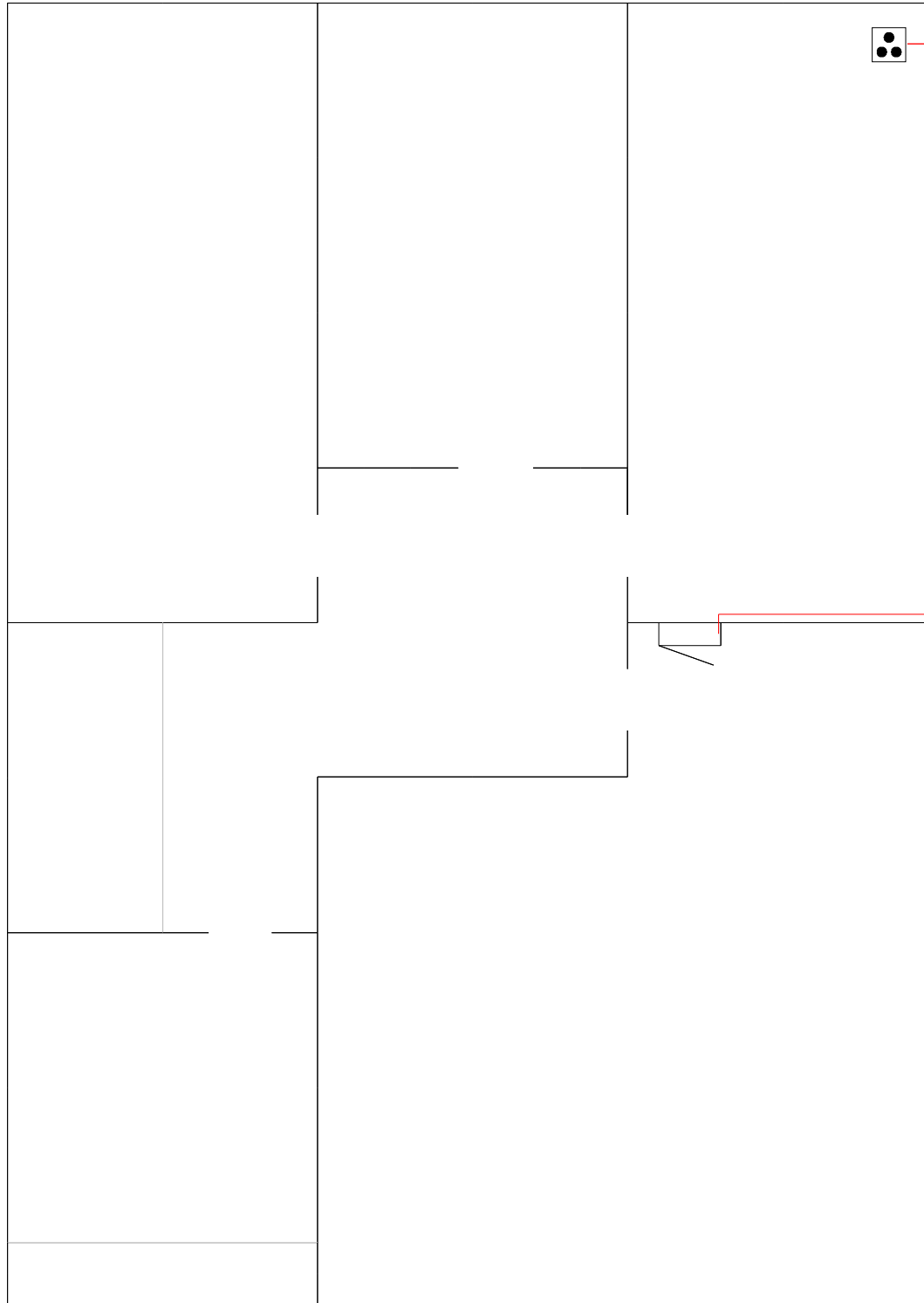
7.4 KW

1x32

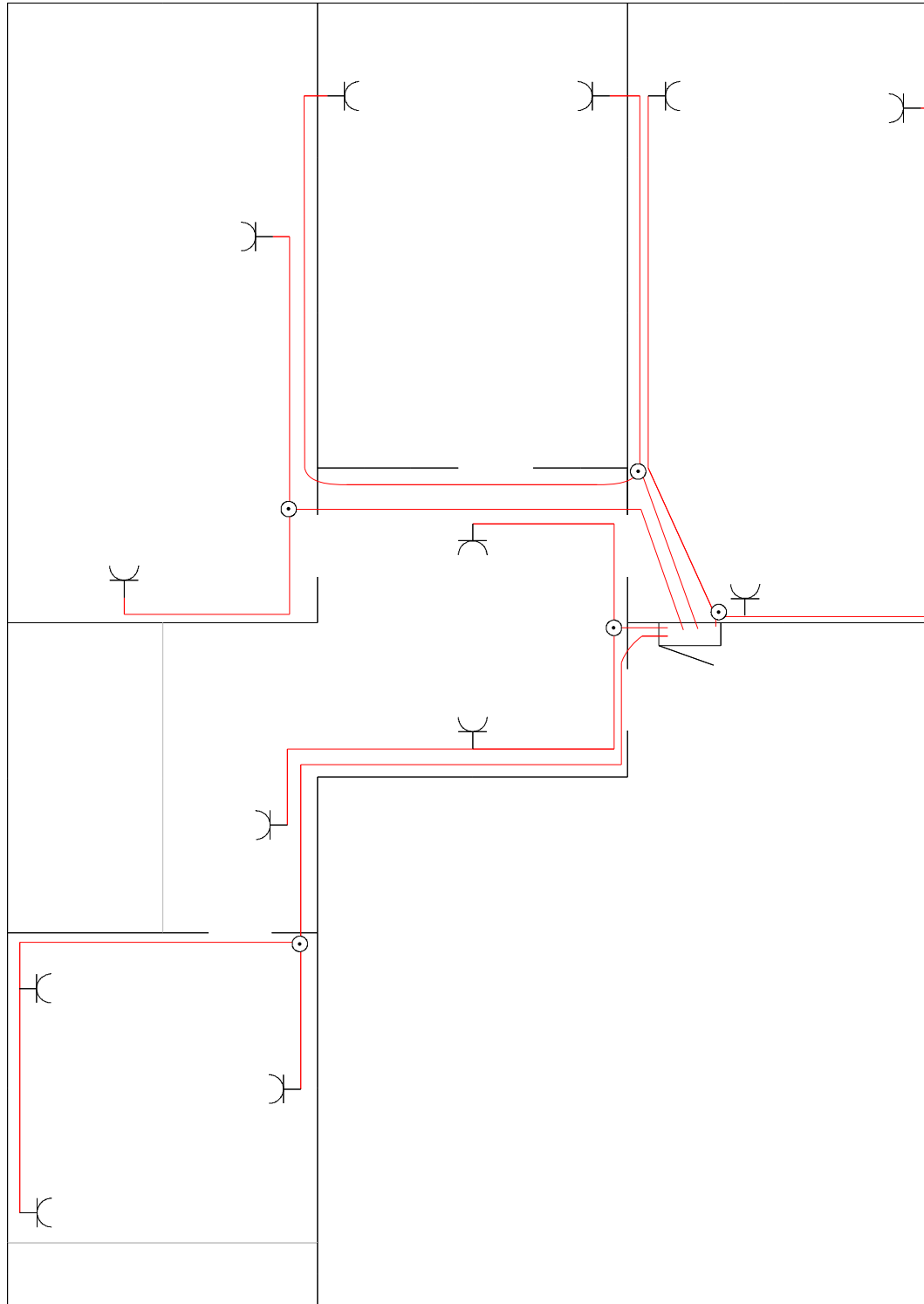
BUILDING PLANT



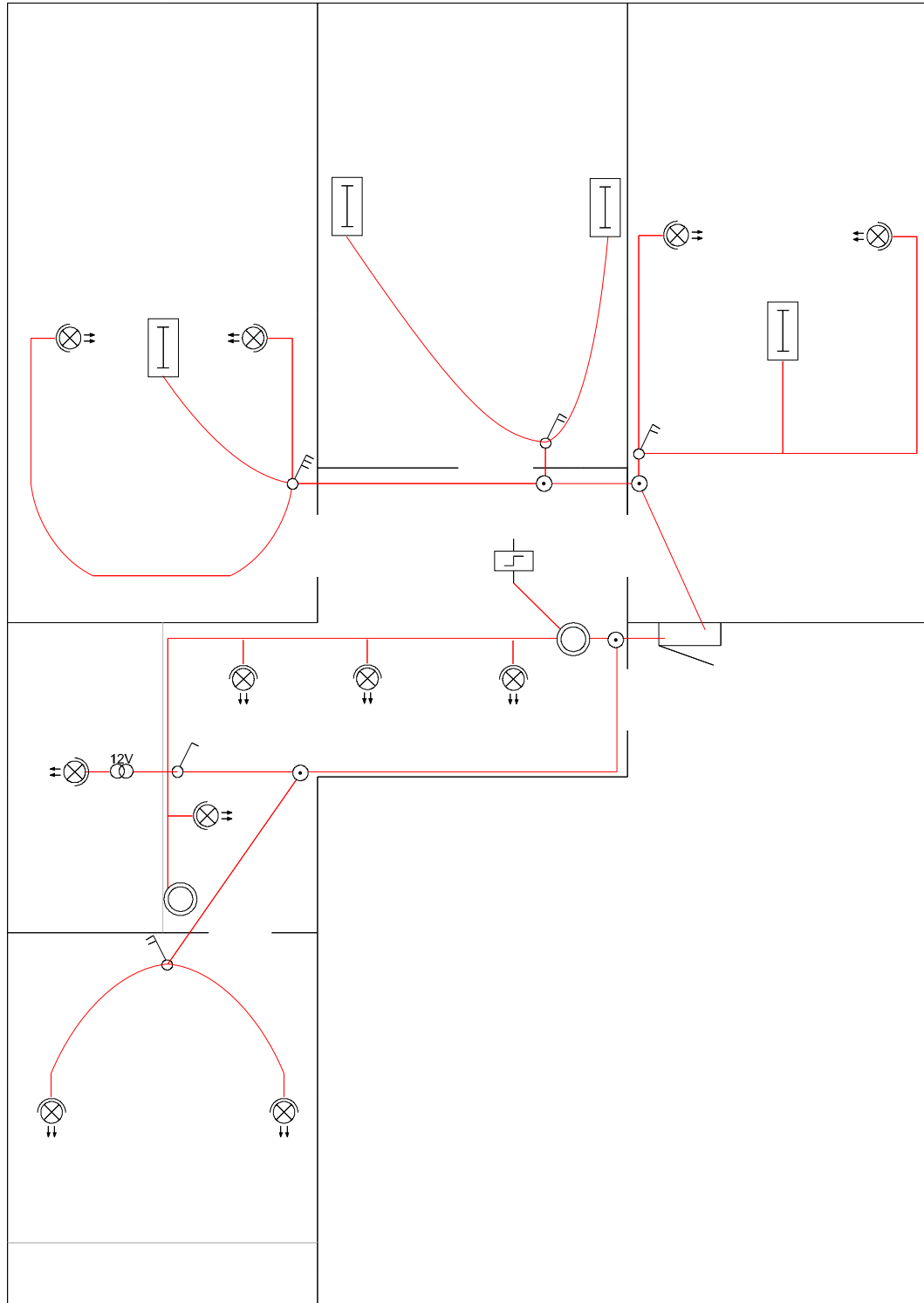
CIRCUIT №1

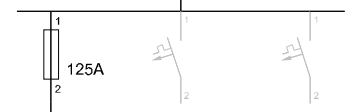
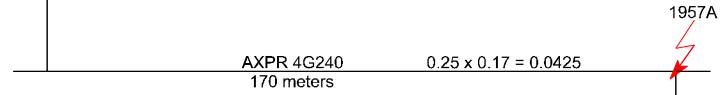
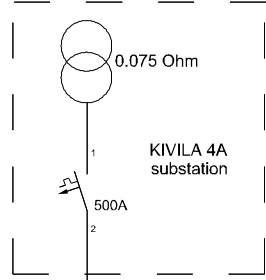


CIRCUITS 2 - 6

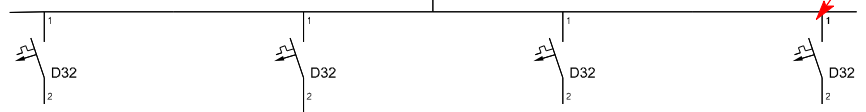


CIRCUITS 9 AND 10

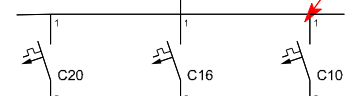




Al 4x10mm²: L = 20M
6 x 0.02 = 0.12



MKEM 3x10: L = 8M
4.6 x 0.008 = 0.037



NYM 3G4: L = 15M
11.5 x 0.015 = 0.1725



NYM 3G2.5: L = 40M
17.4 x 0.04 = 0.7



NYM 3G1.5: L = 50M
29 x 0.05 = 1.45



MATERIALS

Fuse box "Tehnoplast 36M"	1
Load switch "GE" 63A 250V	1
Circuit breaker "GE" C20 1-ph	1
Circuit breaker "GE" C16 1-ph	5
Circuit breaker "GE" C10 1-ph	5
RCD "GE" 25A/30mA	4
Memory relay "GE" 230V 16A 1NO	1
Busbar FORK 10mm 1P	12M
Busbar FORK 10mm 2P	8M
Busbar, blue 7x10 + 1x16	4
Transformer 230VAC to 12VAC, IP65	1
Cable NYM 3G2.5	200 Meters
Cable NYM 3G1.5	70 Meters
Copper wire, black, 1.5mm	40 Meters
Copper wire yellow green 10mm	20 Meters
Copper wire black 10mm	20 Meters
Copper wire blue 10mm	20 Meters
flexible conduit	55 Meters
Outlet boxes, 65mm for concrete	30
Socket 1-phase 16A IP20	20
Light switch IP20	8
Push light switches	2
Lamps and light fixtures	*according to consumer's wishes
Other (nails, contacts)	1

Work

1 person @ 11 days