

Historic, archived document

Do not assume content reflects current scientific knowledge, policies, or practices.

62,27

1925

INDEXED

EARL FERRIS NURSERY

HAMPTON, IOWA.



WE HAVE NO AGENTS
DON'T OVERLOOK OUR SEED BARGAINS



Landscape Plan No. 1

One of the Most Charming of Ferris Evergreen Plantings

In it you will find the year around beauty and finish of the Evergreens, their varying shades of green, blue and silver, their graceful and symmetrical lines, and their various habits of growth that give the picture the artistic touch and destroy tiresome uniformity. The vines creep up for the higher background and tone down the stiff architecture. Surely it is a delightful home, yet how ordinary and plain it would be without planting.

Every home should have at least a few Evergreens around it, if for no other reason than to relieve the bare wintry landscape and to retain a little of the lovely green coloring of Springtime. The above planting will fit almost any requirement, and can be used as effectively for the side of the house along a bare stretch of wall, as for a porch planting.

In reality similar Evergreens are used on the opposite side of the porch also, but the photograph and plan, as you see, show just the one side. Quotations are given on both single and double collections, however, so that if you have a similar home which you desire to beautify in this way, you can have the complete planting—one that, at a small initial cost, will add thousands of dollars to the valuation of your property and make your home the most attractive one in your locality.

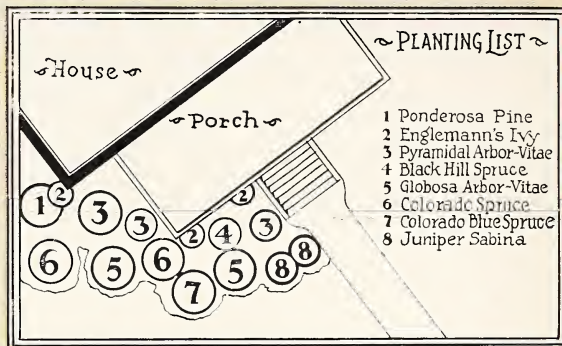
(1)—1	Ponderosa Pine	13-24 in.	\$0.50	6-7 ft.	\$ 8.00
(2)—3	Engelmann's Ivy	2 yr.	2.25	2 yr.	2.25
(3)—3	Pyramidal Arbor-Vitae	18-24 in.	4.50	4 ft., Heavy	13.50
(4)—1	Black Hills Spruce	2-3 ft.	1.25	4-5 ft.	3.00
(5)—2	Globosa Arbor-Vitae	18 in.	5.00	2 ft., Heavy	6.00
(6)—2	Colorado Green Spruce	3-4 ft.	3.50	5-6 ft.	7.50
(7)—1	Colorado Blue Shiner	2-2½ ft.	4.00	3-4 ft.	8.00
(8)—2	Trailing Juniper	1-2 ft.	3.00	Extra Heavy	10.00

Regular catalog price— \$24.00 \$58.25

FERRIS' SPECIAL LANDSCAPE BARGAIN PRICE \$22.50 \$ 55.00

TWO COLLECTIONS—SPECIAL LANDSCAPE OFFER 40.00 100.00

NOTE. If the surface of the brick is smooth, you should use Ampelopsis Veitchi vines in place of Engelmann's Ivy, and we will make the change for you without extra charge. If the brick is rough, however, the Engelmann's Ivy will cling to it.



- ~ PLANTING LIST ~
- 1 Ponderosa Pine
 - 2 Englemann's Ivy
 - 3 Pyramidal Arbor-Vitae
 - 4 Black Hill Spruce
 - 5 Globosa Arbor-Vitae
 - 6 Colorado Spruce
 - 7 Colorado Blue Spruce
 - 8 Juniper Sabina

A Lovely Roadside Planting of Ferris Evergreens

- | | |
|--------------------------|--------------------------------|
| 1 Pyramidal Arbor-Vitae. | 4 Colorado Blue Spruce Shiner. |
| 2 Dwarf Mugho Pine. | 5 American Arbor-Vitae. |
| 3 Colorado Green Spruce. | 6 Concolor Fir. |



How we Stand in our Home Town



WHAT THE HAMPTON MAYOR SAYS ABOUT US.

Hampton, Iowa.
January 15, 1925.
To Whom It May Concern:—
I have been personally acquainted with Earl Ferris for twenty-five years. I have purchased all of my trees and other nursery stock, both for my home and for my farm, from Mr. Ferris, and I believe that I have one of the best evergreen windbreaks in northern Iowa. All of the stock I have secured from the Earl Ferris Nursery has been more than satisfactory, and I certainly am glad to recommend them as being honest and reliable. And too, I personally know that they grow their own stock, right here in Hampton.

Very truly yours,
DR. J. C. POWERS,
Mayor of Hampton.

WHAT THE EXPRESS AGENT SAYS ABOUT US.

Hampton, Iowa.
Dec. 31, 1924.
To Whom It May Concern:—
For several years I have been the express agent on the job, superintending the handling of all express from Hampton, and by far the largest customer we have is the Earl Ferris Nursery. It is a pleasure to recommend them, for they put out good packages, well packed, that reach destination in good shape. They are an honest and reliable firm in every sense of the word.

Sincerely yours,
E. U. BUTCHER, Agent,
American Railway Express Co.

WHAT THE HAMPTON POSTMASTER HAS TO SAY.

Hampton, Iowa.
Dec. 15, 1924.
To Whom It May Concern:—
I wish to recommend the Earl Ferris Nursery of this city as one of the best and most reliable nurseries in the country. I am personally acquainted with Earl Ferris, the proprietor, and know him to be personally honorable and financially responsible.

To show that he stands in high regard with his fellow men, I have only to refer to the facts that he is the largest stockholder and a director in the Hampton Savings Bank, Vice-President of the Bradford Savings Bank, for three years the President of the Northern Iowa Horticultural Society, a director of the Iowa State Horticultural Society, President of the Iowa State Nurserymen's Association for five years, for six years general manager of the big Mid-West Fruit Show, and a director of the State Fair Board of Iowa, having the Department of Horticulture under his supervision.

Mr. Ferris never fails to give absolutely fair treatment and prompt service, and I know these statements to be facts by personal dealings and observations.

Sincerely yours,
WALTER B. LUKE,
Postmaster of Hampton.

WHAT OUR BANKER SAYS.

Hampton, Iowa.
Jan. 1, 1925.
To Whom It May Concern:—
We have personal knowledge of the Earl Ferris Nursery Company and can recommend it to anyone wanting first-class nursery stock at reasonable prices. The company's rule of selling direct to the consumer, instead of through agents or middlemen, is making it many friends.
Mr. Earl Ferris stands very high in this community both morally and financially. He is one of our foremost citizens, and we consider his big nursery one of Iowa's biggest enterprises.

Mr. Ferris is the largest stockholder in this bank and one of our directors. His word is as good as his bond. He is possessed of many acres of Franklin County real estate, also considerable personal property, such as stocks, bonds, and other securities. He is abundantly able financially to carry out any contract or promise that he may make.

Very sincerely,
C. W. HAASE, Pres.
Hampton Savings Bank.

WHAT A DISTRICT JUDGE SAYS.

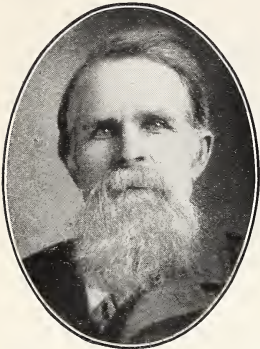
Hampton, Iowa, Jan. 1, 1925.
To Whom It May Concern:—
Hampton, and in fact all of northern Iowa, is mighty proud of the big Earl Ferris Nursery, which has grown from a small plant to the largest institution of the kind in the country. I am mighty glad to recommend this firm as being honest and reliable. Very truly yours,

SHERWOOD A. CLOCK,
Judge of the District Court.

INDEX

Acer Ginnali	41	Forsythia	38	Plums, Native	21
Achillea	35	Fruits	18-28	Poplar	45
Almond, Flowering	41	Gladioli	32	Privet	43
Apples	18-20	Golden Glow	35	Raspberries	24, 25
Arbor-Vitae	14, 16	Gooseberries	23	Retinispora	17
Ash	46	Grapes	28	Rhubarb	28
Asparagus	28	Guarantee	6	Rosa Rugosa	31
Barberry	43	Hackberry	46	Roses	29, 30, 31, 51
Basswood	46	Hedges	43	Seeds	47-52
Birch, Weeping	46	Honeysuckle, Bush	40	Shade Trees	45, 46
Bittersweet	44	Honeysuckle, Vine	44	Subs	38-42
Blackberries	46	Horseradish	28	Siberian Pea Tree	42
Camperdown Weeping Elm	46	Hydrangea	38	Snowball	41
Catalpa	45, 46	Iris	34, 35	Snowberry, White	39
Cedar	14-16	Juniper	15-17	Snowberry, Red	40
Cherries	23	Landscape Plans	2, 10, 11, 35, 36, 37, 42	Spiraea	39
Clematis	44	Landscape Service	7	Spruce	12-17
Crab Apples	20	Lilac	40	Strawberries	26, 27
Crab, Flowering	42	Locust, Honey	46	Sumac	42
Cranberry, High Bush	41	Maple	45, 46	Syringa	39
Currants	23	Mulberry	46	Tamarisk	42
Dahlia	31	Oak	46	Terms of Sale	8
Deutzia	42	Peaches	22	Transplanting Directions	8
Dogwood	42	Pears	22	Vines	44
Elm	46	Peonies	33	Walnut	46
Evergreens	2, 10, 11	Phlox	34	Weeping Trees	46
Evergreen Plans	2, 10, 11	Pine	13-16	Weigela	41
Elder, Golden	42	Plums, Hansen's Hybrid	21-22	Willow	46
Fir	16			Wisteria	44
Forest Tree Seedlings	46				

Three Generations of Nurserymen



S. W. Ferris

The Ferris Nursery as thousands of home owners and farmers know it now had its beginning in Civil War days.

Little did my father dream, back in 1869 when starting his nursery on a single acre of ground, that some day it would cover over 400 acres of the richest soil in Northern Iowa, or that his method of root-pruning and policy of growing heavily rooted, highest grade Evergreens, Shrubs and Trees would be accepted as the standard of quality by thousands.

This is what has happened in three generations. My father, S. W. Ferris, was a born nurseryman. Like Luther Burbank, his greatest pleasure came from improving the different trees, shrubs and fruits grown. But instead of developing new varieties like Burbank, my father's work, and the one that has been handed down to me and is being handed on to my son, S. W. Ferris, Jr., was devoted to the improvement of the root systems—developing heavier rooted and better Evergreens by his method of root-pruning and transplanting.

Few people realize that our 2 to 3 ft. Evergreens, if they had never been transplanted would have been 25 feet high—spindling, poorly rooted trees. My father was the first man to advocate three and four times transplanted Evergreens before selling to customers. Our Evergreens are transplanted at two years old into beds, then two years later they are root-pruned and transplanted into the nursery row, and they are thinned, root-pruned and transplanted once or twice more before they are 2 ft. high. This makes them compact, heavy, bushy trees, with a root system sufficient to insure their growth.

These same careful methods of transplanting and root-pruning are used in the development of Ferris shrubs and plants, for all Ferris Nursery Stock must come up to the same standard of highest quality roots and tops.

So, for three generations, now, we have been making rapid strides towards the goal set by my father. Each year we can see some progress. It certainly is true that Ferris stock is better than it was fifty years ago. Each year in the future we expect to add to our experience in growing hardier and stronger stock.

Why Ferris Fruit Trees Are Superior

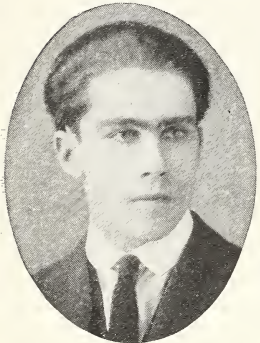
For a great many years my father, like 90 per cent of the other nurserymen, cut his scions from nursery trees, and grafted on piece root—in fact, grew the trees in exactly the same manner that most trees are grown today. But, after years of experimenting on a small scale, we found out that by cutting scions from BEARING TREES, AND GRAFTING ON WHOLE ROOT, we secured a better tree, that would bear younger than by the old method, and that we did away with the biggest curse of the nursery business—the sending out of stock that might prove untrue to name. We are glad to tell our customers that the fruit trees we are sending out now, the scions have been taken from BEARING TREES in place of from nursery trees, and that by taking the scions from bearing trees we are absolutely sure that there is no mix in them, and that they are true to name when grafted.

The experience of working from sun-up to sun-down in the nursery under my father's teaching as I grew up, backed by my consuming interest in growing better nursery stock, has made it possible for me to offer all home owners the advantage of well-rooted, fast-growing fruits, shrubs and trees.

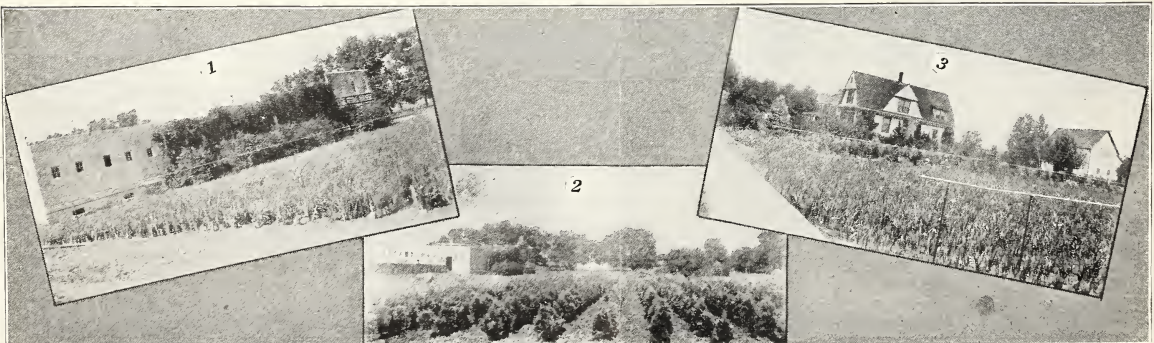
Perhaps it is because we are nurserymen at heart that we deal direct. No middlemen, agents or peddlers are allowed to handle Ferris nursery stock, because we have found from bitter experience that the best way is to deal with you personally—where we can give you advice based on our own experience—where we can check up on how well you are pleased with Ferris Stock—where you can come with complaints or tell your friends where to come for the finest trees, fruits and shrubs.



Earl Ferris



S. W. Ferris, Jr.



1. Office and Field of Gladioli.

2. Field of Dwarf Evergreens.

3. Ferris Home and Bulb Field.

This Catalog is the Only Ferris Salesman

When you buy nursery stock from the Ferris Nursery you deal direct with Earl Ferris.

Direct selling makes it possible for me to give you the advantage of lower prices, because there is no 50 per cent split with agents. No lower prices on ordinary stock, but on the highest quality trees, fruits and shrubs with the famous Ferris root systems, and northern grown right on the farm shown in the pictures on this page.

Up to twenty-five or thirty years ago we had a gang of agents on the road selling nursery stock. We paid these agents 50 per cent on each order sold, the same as many nursery companies do now. What I tell you is from actual experience. The 50 per cent commission was all the agents looked at. Anything to get the customer's name on an order blank was considered legitimate. Outlandish guarantees! Exaggerated statements! High sounding promises! Anything and everything! And many were the orders that customers claimed that they had only ordered half or less than the one sent in by the agent.

We determined to give our customers better service, to make a square deal possible, and to tell the story of Ferris Quality direct without it being "hashed" beyond recognition by agents. We discharged all our agents and started the new method of selling and shipping direct.

What has been the result? Thousands know and buy Ferris Nursery stock where hundreds did before. To grow the trees, shrubs and fruits ordered has made it necessary for us to extend our planting until today over 400 acres are devoted to raising nursery stock.

Of course, we have advertised. But we know and you know that all the advertising in the world would not have brought these thousands of customers unless Ferris Nursery stock "delivered the goods." We have found that over three-fourths of our business comes from old customers and their neighbors and friends, which means that Ferris Nursery stock gives complete satisfaction.



We have over a half million two-foot Evergreens. There are over 2000 trees to the row in this particular field, with Norway Spruce in the foreground.

Ferris' Seeds

Thousands of our customers write us every year for seed prices, saying that from experience they know and have every confidence in our nursery stock, and would like to procure High Quality, Tested Garden and Flower Seeds from us, where they know they would get the best. This year, for the first time, to meet the rapidly growing demand, we are going into the seed business on a large scale.

We honestly believe that the seeds we are offering are from the best growers in the world, and we know that they have been very carefully tested for germination. We are happy to add, that not only do we meet every required state test, but in every single instance our seed tests EXCEED the state germination requirements, and thus further insure you as to quality. Every farmer and gardener knows the value of Selected Seed; therefore, if you want the best, the very best in seeds, we solicit your order, knowing Ferris' Seeds will bring you a successful crop.

Don't Overlook the Big Decrease in Prices This Season

Notwithstanding that many firms find it necessary to keep prices up, and in many cases to increase them, under our efficient methods of growing and selling we are mighty proud that we can cut our prices about 20 per cent this year—in some cases even 50 per cent. We have had an unusually favorable growing season, which has helped to make our production of everything even beyond our expectations, and where we can give a customer advantage of a shave in price, we are anxious to do it.

We would like to have you join our big family of customers and to have you invite your friends to join us and save money on the trees, shrubs, fruits or seeds they need.

EARL FERRIS.

ONE OF THE MANY SATISFIED FERRIS CUSTOMERS WHO HAS HAD WONDERFUL GROWING AND FRUITING RESULTS WITH OUR FRUIT TREES.

Herbster, Wis., Oct. 6, 1923.

Gentlemen: Regarding the 865 fruit trees received from you people last Spring, will say they have done wonderfully and so far as I can see there is no kick coming at all. I am figuring on placing another order later on with Ferris, and no other concern need apply.

Yours very truly,

DANIEL J. BUCKLEY.

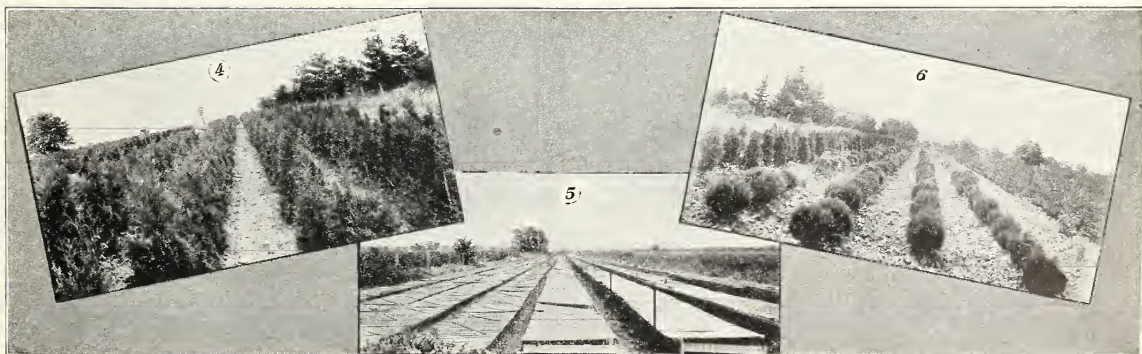
Herbster, Wis., August 8, 1924.

Gentlemen: Want to tell you that the plums planted in the Spring of 1923 bore so heavily this year that they were nearly a nuisance, and we are enjoying wonderful big plums. Trees are Sapa and Opata. Cherries received in 1923 also bore quite a large amount of fruit.

Apples planted in 1919 from your firm—Duchess and Wealthy, also Stayman's Winesap had a wonderful amount of fruit on them this year, and are proving true to name. I will not plant any trees unless they are from Ferris. Of course, in order to get results you have to take care of them. I have several hundred trees in my orchard, mostly all from Ferris. There are some from other firms and I intend to use the axe on them, as they are not suited to our climate and some of them look sick, although they got the same treatment that I gave to Ferris trees. Please send your Spring catalog.

Yours very truly,

DANIEL J. BUCKLEY.



4. Best Field of Pyramidal Arbor-Vitae in the United States.

5. Several Million Evergreen Seedlings Under Shade.

6. Some of Our Perfect Shaped Pyramidal and Globosa Arbor-Vitae.

Our Terms of Sale and The Ferris Guarantee

Every successful business must have a few rules and regulations in order to give best service to their customers. It has been our honest endeavor through the years to sell the highest quality trees and plants at the lowest possible prices, under as few, simple, direct terms as possible, thereby putting each and every transaction with our customers on a firm basis of understanding and co-operation.

Our guarantee, too, is as straight-forward and square as can be desired. We do not talk around in high-sounding phrases—we talk direct to you, and give you not only this iron-clad Guarantee that has always been back of Ferris Trees and Plants, but even better than that we have our 56 years of Nursery experience with thousands of our customers coming back every year for more nursery stock.

Every shipment that leaves our Nursery has attached our Certificate of Inspection from our State Entomologist, showing that all of our trees and plants are entirely free from disease and insect pests.

Terms of Sale

All goods purchased from this catalogue are sold under the guarantee given on this page. **NO ORDER ACCEPTED FOR LESS THAN \$1.00.** It costs us about \$1.00 to handle any order, regardless of the size, and we must get handling expenses out of them.

On orders up to and including \$5.00, we require cash with order. On orders amounting to more than \$5.00, either all cash with order, or, if customer prefers, one-fourth cash with order, balance C. O. D. We prefer all cash with order for the reason that we can give our customers better service on straight cash orders. There is a good deal of red tape attached to C. O. D. shipments, and during our rush packing season, when we are working nearly 24 hours out of the day, trying to give good service to our customers, C. O. D. shipments are bound to be delayed a little.

If nursery stock is ordered by parcel post, and no money included for postal charges, we will send the trees or plants as directed, if possible, with postage C. O. D., but if the size or weight of the bundle is outside of the parcel post limit, or contains nursery stock difficult to handle by parcel post, we reserve the right to change the routing to express. We desire very much to comply with our customers' wishes, and will do so wherever possible.

Orders are booked as they are received. Shipments are not made until proper time to plant, unless otherwise requested.

Five trees of one variety are sold at the ten rate; 50 at the 100 rate; 500 at the 1,000 rate, unless otherwise stated. **LESS THAN FIVE OF ONE VARIETY AT THE EACH RATE.**

If Evergreens are desired balled and burlapped, add 60c per tree extra for this special packing.

Bargain Collections Cannot Be Altered, Divided or Changed in Any Manner.

Earl Ferris Endorsed by State Officials

Appointed Supervisor of Planting and Purchaser of Nursery Stock For One of the Largest and Finest Landscape Projects Ever Undertaken—The Iowa Capitol Extension Grounds.

To have your reputation as Nurseryman and business man endorsed by the Governor and Executive Council of the State is one of the highest honors that can be conferred. It is with all due modesty that I make mention of this matter. I am proud—justly proud of the accomplishment of this gigantic undertaking, but it is mainly for the purpose of bringing all of my customers a little closer and furthering their confidence in me and Ferris nursery stock that I tell you of it.

In beautifying and landscaping this big tract of over 100 acres, almost \$250,000.00 was expended for landscaping and planting alone. The huge undertaking of supervising the planting and supplying the requirements was delegated to me, and when I see the results of these many months of work I am indeed proud that I had the honor to be identified with this project, and more than pleased with the manner in which the stock that I furnished passed the closest inspection of the state's own experts who required and demanded only the best. It's a living, constantly growing advertisement, that personifies the high quality of the nursery stock produced in the Ferris Nursery—the kind that is supplied to all Ferris customers—the kind that has made this Nursery famous.

Read These Testimonials from State Officials

The planting material supplied by your Nursery was true to name, up to grade, and very satisfactory in quality. **L. EARL FOGLESONG, Landscape Architect.**

Since planting, the trees and shrubs furnished by you have made the Iowa Capitol Grounds the most beautiful in the United States. **O. W. CROWLEY, Engineer.**

The Ferris Guarantee

I guarantee that Ferris stock will reach the purchaser alive and in growing condition, and will replace free of charge any that does not upon receiving your express or freight receipt with written statement from the agent, showing loss or damage. This does not apply to Parcel post charges, unless 10c for insurance has been added.

Any tree or plant that dies the first growing season, I will replace at a cost of one-half the regular catalog price, customer to make a written report and have his order for replacement in our hands before October 10, following date of purchase.

I guarantee to every Ferris customer, stock that is true to name, and absolutely as represented. Any Ferris stock proven not to be will be replaced free of charge or the purchase price refunded. I cannot be held liable for any damage other than herein named.

EARL FERRIS.



A View of the Iowa State Capitol Grounds.

Landscape Service to Ferris Customers

The Home Beautiful movement has traveled far and wide, into every nook and corner of our country; to have the home landscape beautified with shrubs and trees is the desire of everyone. It is a well known fact that the home ties are closer and more permanent where the home is attractive, both inside and out.

We do not hesitate to decorate the walls of our rooms with artistic wall paper and paint, or to secure pictures and ornaments that make the interior of the home cheery and comfortable. Coming right down to it, isn't it just as important to make the external appearance charming and comfortable with shade trees, flowering shrubs and vines, and a garden full of riotous flowers? It is the outside of a home that everyone else sees, and for the family the ideal summer living room is out on the lawn under the trees, with flowers in abundance, birds gaily singing and children merry in their play.

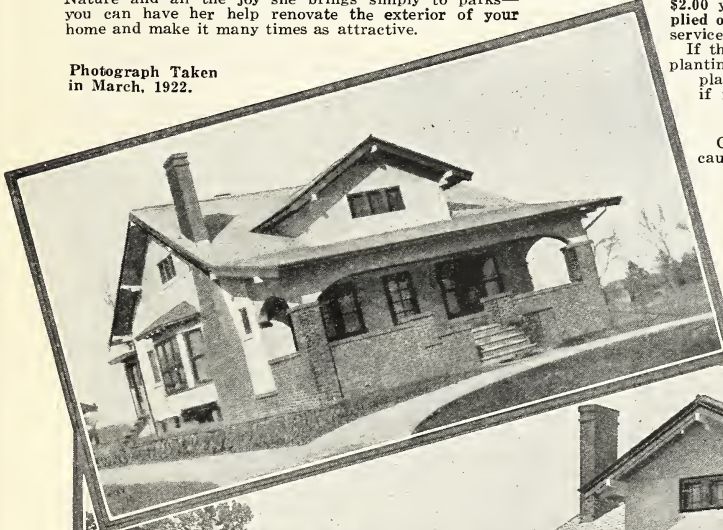
Do not think your home must be large and spacious to carry out this work, for the most modest cottage can be transformed into a veritable bower of Spring loveliness that will last through the seasons.

THE LANDSCAPE PLANTING PICTURED BELOW COST LESS THAN \$50.00, AND NOTE THE TRANSFORMATION THAT CAME IN THREE MONTHS TIME.

The owner of this beautiful home in Northern Iowa is justly proud of it, and is the recipient of praise and envious admiration from his neighbors and friends. The shrubs and trees originally cost less than \$50.00, but they have added several hundred dollars to the valuation of the property. Transforming the bleak appearance of a home with flowering shrubs and ornamentals not only places it among the most attractive in your community, but also increases its worth much more than you realize.

Every home has unlimited possibilities for just such a lovely setting, from the broad and spacious grounds of the farm home to the narrow, limited space around city homes. Don't confine Mother Nature and all the joy she brings simply to parks—you can have her help renovate the exterior of your home and make it many times as attractive.

Photograph Taken in March, 1922.



A Ferris Planting Around the Home of Mr. Earl Elliott, Hampton, Iowa. Photograph Taken June, 1922.

Landscape Plans In This Catalogue Can Fit Many Homes

Your dwelling may not have the same outline, nor will the dimensions be the same, but the planting will work out exceedingly well by taking a group or shrub out here and using it in some more needy spot, keeping in mind that the taller growing varieties must be used in the background and the dwarf sorts in the foreground, that the effect will be better when they are massed or in a border around the porch or to hide some unsightly spot, instead of scat' here and there through the lawn.

Individual Planting Plans

To meet the growing demand for personal planting plans, we added this special department two years ago, and because of our very liberal terms for making these plans and the satisfaction that they have given to our customers, this department has grown beyond all expectations until it has come to play a very important part in our organization. This special service is for the customer who wishes a planting plan made to fit his conditions and needs exactly—who wants a plan drawn to scale showing exact location of advisable shrubs and trees that will give finish and charm to his own particular home and grounds.

Of course, there is considerable work and study involved in making these personal plans, and to help cover this extra expense, we make a charge of \$2.00 where the home grounds are comprised of one or two lots. When sending remittance of \$2.00 for a planting plan, you must include a rough sketch of your home and grounds, giving directions and dimensions and spotting in trees and shrubs that are already planted. If you can send a snapshot of the home and a statement of your own ideas and wishes, they are always a great help—we can be sure of the most satisfactory results. Then, if the trees and shrubs given in the estimate are purchased of our Nursery and amount to \$15.00 or more, the \$2.00 you have already paid for the landscape plan may be applied on the order as a due bill, thus rendering you this landscape service free of charge.

If the property to be landscaped is large and requires extensive plantings, it necessitates considerably more work and for such plans we charge all the way from \$5.00 to \$10.00. Write us if interested in a plan for a larger acreage.

No Plans Made After April 1st.

Our shipping season is in full sway by April 1st, and because we want to give every customer the best possible service we cannot take the time to make personal planting plans during that busy time. The shipping season for nursery stock is, of necessity, a short one. We have a great many thousand customers to ship to, and to handle this large volume of business properly, we spend sometimes nearly twenty-four hours of the day endeavoring to get shipments off promptly and in good shape. Accordingly, we have had to make this ruling not to furnish sketches and drawings after April 1st, so be sure to send your application for planting plans in early.

How to Plant and Care For Nursery Stock

Start a Successful Planting by Purchasing High Quality Stock Correctly Handled

Good trees and plants are, naturally, the first step towards success. We have told you how we have been working these 56 years producing strong, sturdy, heavy root systems, and ultimately the healthiest and most vigorous stock that can be grown. It is this kind of trees and plants that we send to our customers, and in addition pack them right.

In our Direct-to-Purchaser method, our trees are dug fresh from the nursery row, packed (and when we pack nursery stock we do it so that the goods could go through safely to France), and on the road to the customer within two or three hours time. There is no shipping to a distributing point, thence divided, handled two or three times and re-shipped, or any other unnecessary delays such as are obvious when handling through agents.

We have four railroads through Hampton, going in all directions, and each and every shipment is billed direct to the customer. There is no waiting for your neighbor's orders and holding them all for one shipment. Your order is simply your own, and has no connection with orders from your neighbors or friends unless you send it in as a club order and desire it handled in that manner.

Good, careful packing is essential to success, also. We have spent considerable study on the best packing methods ever since we started in the business, and we feel that there is another place we are giving our customers No. 1 service. Everything is given the right kind of care in packing, so that Ferris Trees and Plants reach our customers in as good condition as when they came from the nursery row. We have shipped into every section of the United States for many years now, with remarkable success. A well-known express superintendent has told us many times that we turned over to the Express Company the best packed shipments of nursery stock he had ever had the pleasure of handling.

Important Rules to Follow in the Planting and Care of Evergreens

1. Prepare your ground as you would for corn. It should be good growing soil, where corn would grow.

2. Always plant as soon as the trees reach you. Do not expose the roots to the air for one minute. When you have everything ready to plant, unpack the shipment, putting the roots of each tree into a thick mud puddle, so that as much of this sticky thick substance as possible will cling to the roots.

3. Plant Deeply and Firmly, pressing the soil around each tiny root with all your might. Evergreens should be planted from two to six inches deeper than they were in the nursery row, depending on the size of the tree. At the top of the ground leave a little loose soil to prevent the ground from baking.

4. Start cultivation at once; cultivate well and often during the growing season, the same as you would corn. This should be done for the first three or four years. Evergreens will not thrive or give best results in a weed patch. If you cannot cultivate, give them a very heavy mulching of well rotted straw from the bottom of an old straw pile as soon as your trees are planted. Sawdust also makes a good mulch, but take care that you put on plenty of mulching. (In localities of extreme cold, such as Northern Minnesota and the Dakotas, it is advisable to mulch the trees in the row early in the Fall after they have been kept well cultivated throughout the Summer. Leave mulch between the trees through the following season and thoroughly cultivate between the rows).

5. A judicious trimming is also beneficial to transplanted Evergreens. Trim, say about one-fourth of the foliage from your trees as you plant them. This may cause them to appear a little slim for a year or two, but they will be all the better for it in the end.

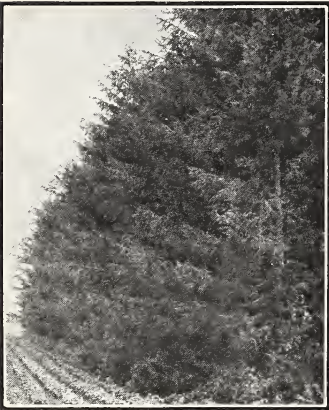
6. Regardless of locality, see to it that your young grove is securely fenced when planted. Nothing is more injurious to young Evergreens than livestock in the yard to trample them down.

For Balled and Burlapped Evergreens. If your Evergreens are balled and burlapped (note in our terms that we make a charge of 60c per tree extra for this special packing), simply dig a large hole, place ball, burlap and all in this hole and pack the dirt firmly around the outside. The burlap will soon rot away, but in planting it will help retain the ball and prevent its breaking. Take care with these balled Evergreens that you do not unnecessarily jar them so that the ball will break. Cultivate or mulch as in Rule 4.

For Seedling Evergreens. They should be planted in the garden for the first two or three years and cared for as you would cabbage plants. The more cultivation you give them, the better. For the small, two-year seedlings, a partial shade the first season is a great help. In two or three years they should be in good condition for transplanting into your permanent windbreak row.



Scotch Pine in Our Nursery.



Ferris Norway Spruce Windbreak.



300,000 2-ft. Norway Spruce in the Ferris Nursery.

Ferris White Pine Windbreak, and a 4-ft. White Pine Showing the Root System on Our 4 Times Transplanted Trees.



Correct Distances to Plant Evergreens for Windbreaks

The distance apart that Evergreens should be planted depends very much on the number of rows used. We advise 5 feet apart in a single row, 8 feet apart each way in two rows, 12 feet apart each way in three rows; but the ideal windbreak is a four- or five-row windbreak, planted 14 feet apart in the row and the rows 20 feet apart. The space between the rows can be used for potatoes, corn, or any vegetable.

Directions for Other Trees and Plants

Under the various departments of this catalogue you will find transplanting directions for the different trees, shrubs and plants that you may intend to set out. Follow them carefully—they have a great deal to do with the success of your planting.

Trimming

A great many years ago when I was but a small boy, I asked my father when to trim, and he told me to trim when my knife was sharp. In other words, trim your trees when they need it, although June is preferable.

Every tree after being planted, whether it is an evergreen, shade tree or fruit tree, should have at least a little trimming—shade trees and fruit trees, the more the better. Personally, I would prefer a shade tree or an apple tree trimmed to a whip, then make my head the height I wanted it after planting.

Ornamental Evergreens should never have the terminal bud trimmed back, but they should be shaped after planting by trimming back their branches about one-third. Be sure that there is at least one or two buds left on each limb, for if these branches on an Evergreen are cut smooth with the body of the tree, they will not grow back like they do on a fruit tree, shade tree or shrub.



One of Our Seedling Evergreen Beds. We have Over 16,000,000 Seedlings Under Shade.

“How Far Apart Shall I Plant?”

The correct distance apart to plant is often a problem to planters. There are no set rules for this, but with our years of experience in planting and growing, we are glad to suggest advisable distances to our customers, which will work out very satisfactorily in every way.

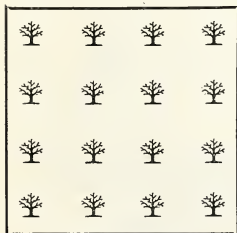
Suitable Distances for Planting	Feet Apart
Apple Trees	25 to 40
Cherry Trees	15 to 18
Plum Trees	12 to 18
Pear Trees	15 to 18
Peach Trees	16 to 18
Grapes	6 to 8
Currants	3 to 4
Gooseberries	3 to 4
Red Raspberries	3 to 4
Black Raspberries	1 by 5
Blackberries	4 to 6
Spring-bearing Strawberries	1½ by 3
Everbearing Strawberries	1 by 3
Asparagus, in beds	1 by 1½
Asparagus, in field	1 by 3



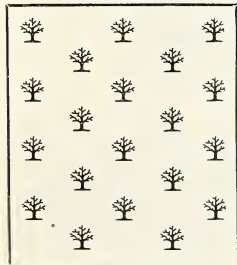
Inspecting a Block of Norway Spruce in My Nursery With My Two Girls.

How to Determine the Number of Plants to the Acre

In following the square method of planting, sketched below, multiply the distance in feet between the rows by the distance the trees or plants are apart in the row, and the product will give the number of square feet that each tree or plant will occupy; then, divide this number into the number of square feet in an acre (43,560) and it will give the number of trees or plants to the acre.



Square Method.



Hexagonal Method.

For the hexagonal method, illustrated below, which some planters prefer as it will plant more trees to the acre, calculate the number of trees to the acre by the square method and add 15 per cent.

Number of Trees or Plants per Acre

Distance.	No. of Trees.
1 foot apart each way.....	43,560
2 feet apart each way.....	10,890
3 feet apart each way.....	4,840
4 feet apart each way.....	2,702
5 feet apart each way.....	1,742
6 feet apart each way.....	1,210
7 feet apart each way.....	888
8 feet apart each way.....	680
9 feet apart each way.....	537
10 feet apart each way.....	435
11 feet apart each way.....	360
12 feet apart each way.....	302
13 feet apart each way.....	257
14 feet apart each way.....	222
15 feet apart each way.....	193
16 feet apart each way.....	170
17 feet apart each way.....	150
18 feet apart each way.....	134
19 feet apart each way.....	120
20 feet apart each way.....	108
25 feet apart each way.....	69
30 feet apart each way.....	48
35 feet apart each way.....	35
40 feet apart each way.....	28



I Am Justly Proud of the Root System on My Three Times Transplanted Evergreens.

IOWA GROWN TREES GIVE BETTER RESULTS THAN NATIVE GROWN

Corning, N. Y., Jan. 16, 1924.
Gentlemen: Kindly send catalog. Am pleased to advise that the order of Norway Spruce which you shipped us last Spring is 100 per cent alive and looking good, which is quite a contrast as compared with a former order from one of our eastern nurseries, out of which there are only three out of eighteen now alive.

Yours truly,
OTTO P. COLE.

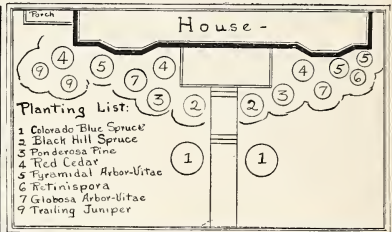
Ferris Evergreens Are Beautifying Thousands of Such Homes All Over The United States. Why?

The year-around freshness and green loveliness of Evergreens make them absolutely essential in every home planting. They give finish and background; their artistic foliage and soft blending colors, the stiff, formal habits of some and the delightfully informal, graceful habits of others furnish charm of rare value to the home setting.

Most all homes demand a coat of paint every few years to keep them from decaying and to renew their appearance. This costs money. When you plant some of my beautiful ornamental Evergreens around your home, it follows that such a home will become one of the most attractive in your community, the first cost being the only cost. There is no money spent out every so often for redecorating or remodeling—simply plant them carefully and give them the little care required, and Mother Nature does the rest. Each season's growth increases the beauty of the planting and the actual property value mounts higher and higher. Real estate records show that homes well planted with Evergreens and shrubs sell for hundreds and often thousands of dollars more than the bleak home where there is no planting.

Another point in favor of planting Evergreens close to the house is that they give as good results on the north side, if not better than they do on the east and west exposures. There are some shrubs that will not flourish best where they get so little sunlight, but Evergreens are right at home in such a situation and brighten up the bare stretches.

A little care should be exercised in selecting varieties for planting close to the house—choosing those that do not grow too rank or massive, that do not shut out the view from the windows. You will find just such wise selections in the following plans—Evergreen plantings that will fit almost any American dwelling, and you are bound to be startled at their low prices. These are not cheap, spindling trees—Ferris' ornamental Evergreens are grown with utmost care to make them shapely and beautiful, but it is by following the Ferris Method of thrifty growing, then selling direct to customers that we can offer these amazing bargains to you—bargains that no home owner can afford to pass up.



LANDSCAPE PLAN NO. 2 Such a Beautiful Evergreen Planting as This Emphasizes the Good Architectural Features of a Home, and Hides All Plainness.

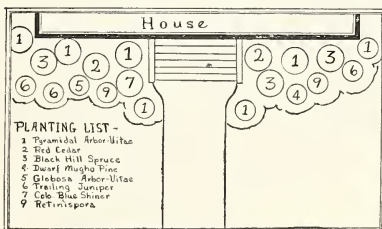
KEY TO PLANTING

(1) 2 Colo. Blue Spruce Shiners, 3-4 ft.	\$16.00
(2) 2 Black Hills Spruce, 3-3½ ft., heavy	3.00
(3) 2 Ponderosa Pines, 6-7 ft.	16.00
(4) 3 Red Cedars, 3-4 ft.	9.00
(5) 3 Pyramidal Arbor-Vitae, 2-2½ ft.	6.00
(6) 1 Retinispora, 12-18 in.	2.00
(7) 2 Globosa Arbor-Vitae, 1 ft.	3.00
(9) 2 Trailing Junipers, 24 in.	4.00
Total	\$59.00
Special Landscape Offer	\$55.50

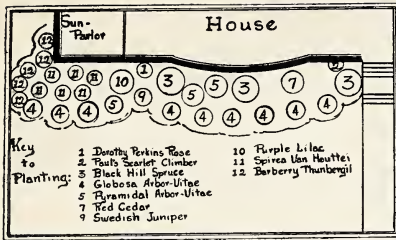
LANDSCAPE PLAN NO. 3 The Evergreen Planting in Front of Earl Ferris Home

KEY TO PLANTING

(1) 7 Pyramidal Arbor-Vitae, 2½-3 ft.	\$15.75
(2) 2 Red Cedar, 3-4 ft.	6.00
(3) 3 Black Hills Spruce, 3-3½ ft., heavy	4.50
(4) 1 Dwarf Mugho Pine, heavy specimen	5.00
(5) 1 Globosa Arbor Vitae, 1 ft.	1.50
(6) 3 Trailing Juniper, 24 in.	6.00
(7) 1 Colo. Blue Spruce Shiner, 2-2½ ft.	4.90
(9) 2 Retinispora, 12-18 in.	.400
Total	\$46.75
Special Introductory Offer on My Own Home Planting	\$42.00



Earl Ferris' Home.



LANDSCAPE PLAN NO. 4

LANDSCAPE PLAN NO. 4

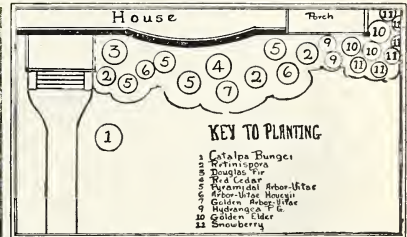
Combine Ferris' Evergreens and Shrubs and Climbing Roses for Such Delightful Effects.

KEY TO PLANTING:

- (1) 1 Dorothy Perkins Rose, 2-yr. ..\$0.35
- (2) 1 Paul's Scarlet Climber, 3-yr.60
- (3) 3 Black Hills Spruce, 3-3½ ft. heavy 4.50
- (4) 9 Globosa Arbor-Vitae, 1 ft.11.25
- (5) 3 Pyramidal Arbor-Vitae, 2-2½ ft. 6.00
- (7) 1 Red Cedar, 3-4 ft. 3.00
- (9) 1 Swedish Juniper, 3 ft. 3.00
- (10) 1 Purple Lilac, No. 1 1.00
- (11) 6 Spirea Van Houttei, large 4-yr. 4.50
- (12) 5 Barberry Thunbergii, 18-24 in. . 2.50

Total\$86.70

SPECIAL INTRODUCTORY OFFER \$35.00



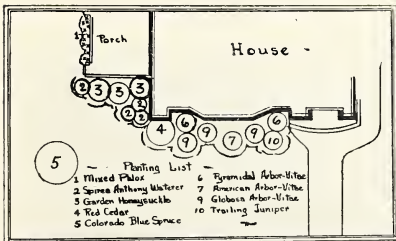
LANDSCAPE PLAN NO. 5
 Ferris' Evergreens With Their Lovely Green Foliage the Year Through, Always Are the Chief Center of Attraction on the Home Grounds.

KEY TO PLANTING:

- (1) 1 Catalpa Bungei, 2-yr.\$2.00
- (2) 3 Retinispora, 12-18 in. 6.00
- (3) 1 Douglas Fir, 4-6 ft. 2.50
- (4) 1 Red Cedar, 3-4 ft. 3.00
- (5) 4 Pyramidal Arbor-Vitae, 2-2½ ft. 8.00
- (6) 2 Arbor-Vitae Hoveyi, 2 ft. 6.00
- (7) 1 Golden Arbor Vitae, 18-24 in. 3.00
- (8) 2 Hydrangea P. G., large 2.00
- (9) 3 Golden Elder, large 3.00
- (10) 3 Golden Elder, large 3.00
- (11) 6 Snowberry—White, 3-yr. 3.00

Total\$38.50

MY AMAZINGLY LOW BARGAIN PRICE\$36.00



LANDSCAPE PLAN NO. 6

Thousands of Homes Are Just Waiting for Such a Planting of My Evergreens, Shrubs and the Showy Phlox, to be Made Attractive.

KEY TO PLANTING:

- (1) 12 Phlox\$2.25
- (2) 4 Spirea Anthony Waterer, 3-yr. 4.00
- (3) 3 Garden Honeysuckle, 3 yr. 1.50
- (4) 1 Red Cedar, 3-4 ft. 3.00
- (5) 1 Colo. Blue Spruce Shiner, 3-4 ft. 8.00
- (6) 2 Pyramidal Arbor Vitae, 2-2½ ft. 4.00
- (7) 1 American Arbor-Vitae, 2 ft. 1.00
- (8) 3 Globosa Arbor-Vitae, 1 ft. 4.50
- (9) 1 Trailing Juniper, 24 in. 2.00

Total\$30.25

FERRIS' ROCK-BOTTOM LANDSCAPE OFFER\$28.50



**WHAT A FERRIS EVERGREEN
WINDBREAK MEANS TO
THE STOCK FEEDER**

Do you know that 99 times out of 100 where farm property sells at a fabulous price, an Evergreen windbreak is the principal reason for the high valuation? Real-estate statistics prove this—it is not just a surmise.

Back of solid walls of Evergreens are protected feed yards—stock sheltered from bitter winds and drifting snows, cutting feeding costs tremendously.

Large stock feeders have proved time and again that without Evergreen windbreaks to protect their feed yards, their stock must have much larger corn rations for body-fuel.

Norway Spruce

The Most Popular Evergreen in Existence for Windbreaks

And well it deserves its wide-spread popularity, for it makes a most beautiful windbreak, and with its compact, heavy growth clear to the ground provides a complete shelter to the buildings and grounds back of it.

The Norway Spruce makes a large, fine looking tree, is the most rapid grower of the Spruces, thrives in a great variety of soils, is hardy everywhere, and stands close planting and severe pruning, which are other reasons why it is used more than any other tree for windbreaks and shelter belts.

Hedges 25 years old can be trimmed down to a height of four feet, whereas the natural growth would be about 50 to 60 feet. It is naturally of a pyramidal symmetrical growth, branching to the ground. Foliage is dark green; needles short and stiff.

It is naturally a strong, vigorous grower, and at maturity often reaches a height of from 80 to 100 feet. Beautiful in form and foliage, making it more generally planted for landscape purposes, probably, than any of the Spruces. But it is as a means of effectual protection against high winds that the Norway Spruce has become most generally known, due to the compact form of its growth. The boughs arrange themselves on the central trunk and do not die out at the bottom as the tree grows. Planted at the proper distance, a few years finds the branches interlacing so thoroughly that the hedge becomes as impenetrable a barrier to the wind as any stone wall could be.

The uses to which the Norway Spruce is put are many and practical. Besides its superiority as a windbreak tree and its fine ornamental qualities; it is the tree that is used more than any other for Christmas Trees. In the past few years we have furnished Christmas Tree planters with thousands and thousands of Norway Spruce for their large farms, and reports received from them have been, without exception, most favorable.

This Christmas Tree industry is a growing one and exceedingly profitable. As you know, the forest pulled trees are so spindling and shapeless, and every year we get about three or four times the price for our nursery trees as others do for trees shipped in from the forests. And, too, the government is bound to stop this wholesale slaughtering of the forests in a very short time, and the Christmas trade will look entirely to growers for their Christmas Trees.

We set our trees in our Christmas Tree plantings three feet apart each way, cultivate them both ways well and often, just as we would corn. It will take 4,702 trees per acre, and nursery grown Christmas Trees will always bring at least \$1.00 each, so that even if you sell them all when they are only 2 to 3 ft. high at \$1.00 each, you will realize \$4,702.00 per acre. What other crop can you reap at such a profit?

100	1,000		
2 to 6 in., two-year-old seedlings.....	\$2.50	\$15.00	
6 to 10 in., three-year-old seedlings.....	5.00	40.00	
(If seedlings are desired by parcel post, add 15c per hundred for packing and postage.)			
6 to 10 in., once transplanted	100	1,000	
and once root pruned.....	\$10.00	\$80.00	
(If the 6 to 10 in. transplants are desired by parcel post, add 60c per 100 for packing and postage.)			
1 ft. average height, once transplanted and once root-pruned..	\$15.00	\$125.00	
(If the 1 ft. transplants are desired by parcels post, add \$1.00 per 100 for packing and postage.)			
Each 10	100	1,000	
18 to 24 in., twice transplanted and twice root-pruned	\$0.35	\$3.00	\$25.00
2 to 3 ft., three times transplanted and three times root-pruned65	6.00	35.00
3 to 4 ft., four times transplanted and four times root-pruned80	7.50	60.00
			550.00

EXTRA HEAVY SPECIMENS, all having been four times transplanted and four times root-pruned, grown in rows four feet apart, and four feet apart in the row. Beauties, just the thing for ornamental planting, or big heavy fellows to fill in an old windbreak. If desired balled and burlapped, add 60c per tree. Each 10

4 to 5 ft.	\$3.00	\$25.00
5 to 6 ft.	4.00	35.00
6 to 8 ft.	6.00	50.00
8 to 10 ft.	10.00	70.00



Ferris Norway Spruce—The Finest of Them All for Windbreaks.

The Majestic White Pine

This magnificent tree is very often called the "King of the Pines," not only for its grandeur in height, color and symmetry, but for its absolute hardness and general adaptability that aid in making it one of America's foremost trees.

On account of its rapid growth and ease in planting, it has become the most popular of the Pines for shelter belts and windbreaks. It grows thick and compact, is thoroughly hardy, stands extreme heat or cold, and will always be one of the best and most widely planted Evergreens, both for windbreak and ornamental purposes. The foliage is a light even green, blending harmoniously with the landscape, while the needles are long and soft. Plant the White Pine in windbreak formation and Mother Nature will build you the mightiest barricade against Winter's chilling blast that is possible. Plant a group around your dwelling and it will afford you coolness and beauty in Summer.

It is the White Pine that makes up, for the most part, the large lumber forests of the North and Northwest. A straight, tall, rapid grower, often reaching a height of 100 feet at maturity, making it supreme as a commercial tree.

Being a native of Minnesota, Iowa and Wisconsin, the White Pine is by far the best all-around Evergreen of the Pine family for planting in these states and all eastern states. It is not well adapted to the western characteristics and soil, and on account of the Federal Quarantine, we cannot ship White Pine into North Dakota, South Dakota, Nebraska, Kansas, Oklahoma, Texas and states west of this line. Where orders from this district call for White Pine, we reserve the right to substitute the Scotch Pine.

You are invited to come to Hampton and see the largest and best stock of White Pine in the United States. We obtained our seed in Northern Minnesota from one of the finest White Pine forests in the world. For this reason, we can guarantee our White Pine to be of our own growing, absolutely free from disease—a beautiful lot of specimen trees.

	Each	10	100	1,000	
2 to 6 in., two-year seedlings			\$ 3.00	\$ 25.00	
(If seedlings are desired by parcel post, add 15c per 100 to cover cost of packing and postage.)	Each	10	100	1,000	
18 to 24 in., twice transplanted and twice root-pruned		\$0.35	\$3.00	\$28.00	\$250.00
2 to 3 ft., three times transplanted and three times root-pruned75	7.00	40.00	375.00
3 to 4 ft., four times transplanted and four times root-pruned80	7.50	60.00	550.00
EXTRA HEAVY SPECIMENS, all having been four or more times transplanted and root-pruned, grown in rows four feet apart and four feet apart in the row. Beauties, just the thing for ornamental planting, or big heavy fellows to fill in an old windbreak. If desired balled and burlapped, add 60c per tree.					
4 to 5 feet	Each	10	100		
		\$2.00	\$15.00	\$100.00	
5 to 6 ft.		2.25	17.50	125.00	

Scotch Pine

The Scotch Pine is a rapid grower, thrives well on poor soil, is especially adapted to Nebraska, North and South Dakota—in fact, will do well in any of our western states. It is easily handled, grows a little faster than the White Pine, but will not live as long. It is one of the best all-around Evergreens to withstand extreme exposure and rough usage generally. Our experience has been that it will stand more trampling by live stock, when planted in and around feed lots and farm yards, than any of the more ornamental Evergreens.

Vigorous in growth, with slender, dark green needles, it makes a quick and attractive windbreak. As a nursery tree it is very attractive, and under our system of transplanting and root-pruning develops a splendid root system for a Pine.

	Each	10	100	1,000	
5 to 7 in., two-year-old seedlings			\$ 3.50	\$ 30.00	
(If seedlings are desired by parcel post, add 15c per 100 for packing and postage.)	Each	10	100	1,000	
18 to 24 in., twice transplanted and twice root-pruned		\$0.50	\$4.00	\$25.00	\$200.00
2 to 3 ft., three times transplanted and three times root-pruned60	5.00	30.00	250.00
3 to 4 ft., four times transplanted and four times root-pruned75	6.00	40.00	350.00



WHITE PINE—Best Pine for Windbreaks in Iowa, Minnesota and Other States East of the Missouri River.

WHAT A FERRIS EVERGREEN WINDBREAK MEANS TO THE FARM HOME

Out in the open country where the blizzards blow with all their might and main there is no protection for the farm home unless there is a compact Evergreen windbreak to break up their fury and divert them to other paths. How drafty and cold is the house where no Ferris Windbreak provides shelter, no matter how often the fuel is shoveled in! It is like moving it 300 miles farther south where the mighty Evergreens spread their massive branches and form a perfect barrier against the terrors of Winter.

White Spruce

One of the most beautiful of all Evergreens, hence its popularity as an ornamental tree in landscape work throughout the United States. It is a native of North America, and by far the best Spruce there is for windbreak and ornamental planting west of the Missouri river. The time will come, at no distant date, when the prairies of Nebraska, Montana and the Dakotas will be well protected with White Spruce windbreaks. At the present time there are many of these windbreaks in these states that are succeeding far beyond expectations.

The White Spruce resembles the Norway Spruce very closely in appearance and form, having the short stiff needles, but the foliage has a more silvery tinge than that of the Norway. It is a fairly rapid grower, compact and upright, and symmetrical in outline. Trees over fifty years old remain well branched at bottom, retain their pyramidal form, and annually make a good upright growth. We do not consider it as good a windbreak tree for Iowa, but much better for Nebraska and the Dakotas than the Norway Spruce.

2 to 3 ft., three times transplanted and three times root-pruned.....	Each	10	100
3 to 4 ft., four times transplanted and four times root-pruned.....		.80	7.50 60.00

EXTRA HEAVY SPECIMENS, all having been four or more times transplanted and root-pruned, grown in rows four feet apart and four feet apart in the row. Beauties, just the thing for ornamental planting, or big heavy fellows to fill in an old windbreak. If desired balled and burlapped, add 60c per tree.

4 to 5 ft.	Each	10	
5 to 6 ft.		\$2.50	\$20.00
6 to 7 ft.		4.00	35.00
7 to 8 ft.		8.00	50.00 70.00



White Spruce.

Black Hills Spruce

This lovely Evergreen simply will not grow in any other way than bushy, compact and symmetrical. Always a little beauty with its heavy, thick foliage, it has become one of the best Evergreens of them all for landscape work, besides being a wonderful windbreak Evergreen for the West and Missouri Valley districts.

It is a form of the White Spruce, a native of the Black Hills country of South Dakota, and resembles its parent, the White Spruce, very much except that it is somewhat slower in growth and a little more compact. Its color, too, is even more silvery than the White Spruce, sometimes even rivalling the Blue Spruce. It is hardy, easily transplanted, and a great favorite everywhere. The Horticulture Department at Ames, and in fact the eminent horticulturists of Nebraska and Dakota recommended the Black Hills Spruce above all other Evergreens for Missouri Valley planting. There is a strip of land on both sides of the Missouri river where the Black Hills Spruce seems to do better than any other Evergreen, and there in its native soil it grows more rapidly than in other sections.

Our Black Hills Spruce in the nursery are a little the finest we have ever grown, or have ever seen growing anywhere. Without question, it is the best lot in the United States—every one a perfect tree. They were grown for specimens, with lots of room, and we only wish you could see their heavy, symmetrical tops and the best root system ever developed on trees. You would order at once for fear that never again would you have the chance to secure such a beautiful Evergreen.

2 to 3 ft., four times transplanted and four times root-pruned, specimens	Each	10	100
3 to 3½ ft., four times transplanted and four times root-pruned, specimens		\$1.25	\$10.00 \$ 85.00
4 to 5 ft., four times transplanted and four times root-pruned, select specimens		1.50	12.00 100.00
		3.00	25.00 175.00

Arbor-Vitae - White Cedar

Without doubt the best tree for hedge purposes that grows, both on account of its beautiful foliage and the fact that it bears shearing better than any other variety. Compact in appearance, dark green in color, with graceful, fern-like branches, and flat, beautifully carved foliage. It does well in any locality; one of the hardiest. This is the Cedar that is so commonly used for hedges—it can be sheared down to a height of two to three feet, and a hedge properly cared for will last for fifty years. In a hedge planting, set 18 inches apart.

Besides its exceptional qualities for hedge planting, the Arbor-Vitae is a wonderful tree for landscape work. The dense, artistic, dark green foliage and compact branches form a perfect pyramid, and whether used in the background of large Evergreen plantings where they soar above the rest, or in small groups by themselves they are pre-eminently satisfactory. Then, for the inside row of an Evergreen windbreak, it is one of the best, on account of its dense growth and the fact that it never loses its lower branches.

It is impossible to recommend a better Evergreen than the Arbor-Vitae to plant in low, wet ground where it seems impossible to grow other varieties. In the low, swampy regions of Wisconsin it is found growing in its wild state. Utilize your unused, wet patches of land with Arbor-Vitae and you will reap profits from their cedar posts, which by the way are liable to remain high in price for many years to come.

1 ft., twice transplanted and twice root-pruned.....	Each	10	100
1½ to 2 ft., twice transplanted and twice root-pruned.....		\$0.45	\$4.00 \$35.00
2 to 2½ ft., three times transplanted and three times root-pruned.....		.60	5.00 45.00
6 to 7 ft., sheared specimens, pyramidal shape, having been four times transplanted and four times root-pruned		5.00	45.00

FERRIS' ARBOR VITAE GROW RAPIDLY AND MAKE A WONDERFUL GROVE.

Mason City, Iowa, R. 3, Feb. 13, 1924.
Gentlemen: I went to the Earl Ferris Nursery five years ago and bought about 300 of the Arbor-Vitae (White Cedar). I have always been told that the Cedar was a slow growing tree. I do not know why, but those Arbor-Vitae have nearly caught up with Scotch and White Pine I bought from another nursery seven years ago. Most of the Arbor-Vitae, I believe, are now ten feet high. I take great pride in them, and have taken many of my friends through my grove.

Yours truly, H. ZIRBEL.



Black Hills Spruce.



Arbor-Vitae

Ponderosa Pine

If you have been looking for the massive, spreading Pine with the very long needles—the tree that is invaluable in landscape either for solid background work or as enormous specimens, and one of the best Pines for windbreaks—here it is, the Ponderosa Pine, or Bull Pine as it is sometimes called.

With needles longer than you will find on any other Pine, extremely thick and of a rich, deep green, it is readily distinguished from other varieties. Its strong, massive, sturdy habits make it unusually attractive wherever used; the sweeping branches spread outward as well as upward, and even in old age it still retains its expansive, broad beauty.

On account of its absolute hardness, it is extremely valuable for windbreaks on the northern and western plains, where conditions are so often unfavorable to the growth of other varieties.

	Each	10	100
18 to 24 in., twice transplanted and twice root-pruned	\$0.50	\$4.50	\$35.00
2 to 2½ ft., three times transplanted and three times root-pruned70	6.50	55.00
6 to 7 ft., extra heavy, select specimens.....	8.00
7 to 8 ft., extra heavy, select specimens.....	10.00
8 to 9 ft., extra heavy, select specimens	15.00

Jack Pine

The Jack Pine or Yellow Pine, is the most rapid grower of all the Evergreens. In fact, it will make a windbreak as quick as a willow, but is not as long-lived as other varieties. It is hardy and does well on any and all soils from the rich, black Iowa and Nebraska loam to the scant and barren soil of the Nebraska plain. Foliage is a light, rather yellowish green, needles moderately long and stiff. When planted alone it is not a beautiful tree, but it does make a good, quick, rough windbreak, and is very easy to transplant.

	Each	10	100	1,000
2 to 3 ft., twice transplanted and twice root-pruned	\$0.60	\$5.50	\$40.00	\$300.00
3 to 4 ft., three times transplanted and three times root-pruned70	6.50	50.00	400.00



Ponderosa Pine.



Red Cedar.



300,000 Three Times Root-pruned White Pine.

Red Cedar (Juniperus Virginiana)

This beautiful variety of the Juniper is very hardy, thrives well on any soil, and will grow on a rocky hillside where it would be impossible to grow any other tree. Tapering and symmetrical in form; bronze foliage in Fall and early Winter—very ornamental. My Red Cedar is the hardy northern variety, the seed having been collected from the Platte river district of Nebraska, and will not Winter-kill as the southern varieties do. On account of the great demand for this beautiful dark green Juniper, and its general scarcity, orders should be placed at once, as my supply is very limited.

The Red Cedar is one of the hardiest and best for the Kansas planter, and for formal or informal landscape planting everywhere there is nothing to equal it. You will find it a great favorite in cemetery plantings. It withstands any amount of trimming and can be sheared to any desired shape. We can furnish Red Cedar only in the following select specimens:

	Each	10
3 to 4 ft., Specimens, having been four times transplanted and four times root-pruned	\$3.00	\$25.00
3 to 4 ft., Heavy Specimens, Sheared Globular Form, four times transplanted and four times root-pruned	4.00	35.00
4 to 4½ ft., Heavy Specimens, Sheared Globular Form, four times transplanted and four times root-pruned.....	4.50	40.00

My Favorite List of Hardy Ornamental Evergreens

(With extra good root systems, having been at least three times transplanted and three times root-pruned.)

To be properly landscaped, from every standpoint of artistic beauty, there should be at least three or more Evergreens in every home planting. It is the Evergreen that retains its verdant foliage the year through and furnishes the only clew to the coming of Spring during the bleak, wintry days. These Ornamental Evergreens have many and various forms of artistic growth, they have delightful colors reflecting from their shiny needles, and when several varieties are used together, the combination of forms and colors is certainly appealing. Make your Home Planting perfect by planting some of my carefully grown, selected Ornamental Evergreens.

IF EVERGREENS ARE DESIRED BALLED AND BURLAPPED, ADD 60c PER TREE EXTRA TO COVER THIS SPECIAL PACKING

Pyramidal Arbor-Vitae

One of the finest of the Ornamental Evergreens for home planting. It can be used close to the house, where it will not grow too tall and bushy, or it is just as effective in a group or pair in the garden planting. The Pyramidalis retains the lovely flat foliage of the American Arbor-Vitae, and is a bright green at all seasons. It grows close and compact, requires no shearing or trimming, as it develops naturally into a perfect pyramidal form. It is exceptionally fine for cemeteries, with its graceful, slender habit.

My Pyramidal Arbor-Vitae this season are wonderful specimens. Visitors and brother nurserymen who have called at the nursery have exclaimed over their remarkably fine shape and heavy, green foliage.

18 to 24 in.	Each	10	100
2 to 2½ ft.	\$1.50	\$12.00	\$100.00
2½ to 3 ft.	2.00	17.50	160.00
3 to 3½ ft.	3.00	22.50	200.00
3 to 3½ ft., Extra Good Specimens	4.00	35.00	300.00
4 ft., Select, Heavy Specimens	4.50	40.00	350.00
5 ft., Select, Heavy Specimens	5.00	45.00	400.00

Globosa Arbor-Vitae

One of the newer Arbor-Vitae that is very handsome. In shape it is absolutely round or globular, very dense in growth, and does not require shearing. It does not grow over four or five feet tall. Foliage is flat and a deep, dark green, the same as the American Arbor-Vitae, its little branches being of unusual delicacy. The Globosa is not as hardy as some Evergreens, however, and should be planted in protected places. I will guarantee that this lovely Arbor-Vitae will more than please you.

18 in., Heavy, Select	Each	10
2 ft., Extra Heavy Specimens	\$2.50	\$20.00
	3.00	25.00

Golden Arbor-Vitae

A distinct, compact, hardy Cedar of broad and bushy growth, with long, slender branchlets and golden yellow foliage. Used extensively with other Evergreens in group plantings for the rich and harmonious contrast.

12 to 18 in.	Each	10
	\$2.50	\$22.00

Concolor Fir

The Concolor comes from the Rocky Mountains, and many consider that it equals the Colorado Blue Spruce in ornamental value. Often called the "Silver Fir" on account of its shimmering foliage, which varies in color from light green to deep blue, and is long, soft, and graceful. When small, it is inclined to be rather straggly and rough, but being a comparatively rapid grower, it soon matures into a tall, broad specimen of magnificent beauty. Perfectly hardy, and at maturity often reaches a height of from 60 to 80 feet. It never loses its lower branches and grows more compact and shapely each season.

2 to 3 ft.	Each	10
3 to 4 ft.	\$3.50	\$32.00
4 to 5 ft.	5.00	48.00
	8.00	78.00

Balsam Fir

The Balsam Fir is a tall, pyramidal, straight-growing tree, foliage of a dark, glossy green, needles short and stiff, and it is one of the best known, hardy Evergreens of the Northwest. The Balsam Fir's one fault is that it seldom lives to be over thirty years old, and where a Fir is desired in a permanent location, we would advise the Concolor or Douglas Fir for this reason.

6 to 7 ft.	Each	10
	\$5.00	\$45.00

Douglas Fir

A magnificent tree from the Rocky Mountains, foliage and form somewhat characteristic of both the spruce and fir trees, acquiring the beauty of each. It is a strong, upright grower, reaching a height of 50 to 60 feet, retaining its lower branches close to the ground in extreme old age. Foliage is of soft green color, branches long and graceful. It is very hardy, and can be planted successfully in any part of the United States.

3 to 4 ft. Specimens	Each	10
4 to 5 ft. Specimens	\$2.00	\$18.00
5 to 6 ft. Specimens	2.50	22.00
6 to 7 ft. Specimens	3.00	28.00
7 to 8 ft. Specimens	3.50	32.50
8 to 9 ft. Specimens	4.00	38.00
	5.00	47.50

Hemlock - Weeping Spruce

A beautiful tree of graceful habit and unequalled for ornamental planting. The dark green foliage is handsome, fern-like in form, and dense. The Hemlock can be depended upon to give the softening touch to any harsh planting. It is especially lovely in the Spring and early Summer when the new, fluffy, light green growth envelops the tree. One of the best for lawn or park planting, but on account of the enormous demand the past few years, it has become quite scarce. Plant in a rather sheltered place for best success.

3 to 4 ft.	Each	10
4 to 5 ft.	\$4.00	\$35.00
	7.00	65.00

Dwarf Mugho Pine

You all know the pretty Dwarf Pine that forms such a bushy, compact little tree. It is always very popular because it can be put to such a variety of uses, always does well, and never looks out of place. The Dwarf Mugho Pine grows as broad as it does tall, and can be planted almost anywhere, as it takes up so little space. Foliage is dark, rich green; needles long and stiff. One of the most popular Pines in landscape work.

Extra Heavy, Select Specimens	Each	\$5.00
-------------------------------	------	--------



Pyramidal Arbor-Vitae.



Globosa Arbor-Vitae.



ORNAMENTAL EVERGREENS—Continued.

Colorado Spruce

Some of our most beautiful Colorado Spruce are too dark in color to be called Shiners. These trees are symmetrical and well formed, but a little more green in color than the Colorado Blue. They are naturally of a broad, pyramidal habit, with compact growth; one of the best trees for landscape work. A great many of these Colorado Spruce as they grow older will acquire a blue color, and after they have been planted for ten or twelve years will develop into beautiful blue specimens.

	Each	10
3 to 4 ft.	\$1.75	\$15.00
4 to 5 ft.	2.25	20.00
5 to 6 ft.	3.75	35.00
6 to 7 ft.	5.00	45.00

Colorado Blue Spruce - Shiners

Nature has produced a myriad of beautiful trees for Mother Earth, but last of all she must have made the Colorado Blue Spruce as a crowning glory of them all. Into this wonderful ornamental tree has been combined a silvery blue luster, perfection in form and symmetry, and hardy characteristics that make it adaptable to nearly all climates. It can be used very effectively as a specimen, in groups by itself, or in groups with other Evergreens, where it should be planted in the foreground to display its truly wonderful coloring and form. Needles rather short and stiff.

In the Spring of the year the Colorado Blue Spruce are off-color, and if transplanted will not regain their blue color until they start to make a good growth. It is the new growth that brings out and renews the blue luster on any Blue Spruce. For this reason we mark all of our Colorado Shiners during the Summer, and they can be relied upon to be genuine blues after they once overcome the shock of transplanting. My trees are select specimens.

	Each	10
2 to 2½ ft., Specimens	\$4.00	\$35.00
2½ to 3 ft., Specimens	5.00	45.00
3 to 4 ft., Specimens	8.00	75.00
4 to 5 ft., Specimens	10.00	90.00
5 to 6 ft., Extra Select Specimens	15.00	125.00
6 to 6½ ft., Extra Select Specimens	20.00	

Koster's Blue Spruce

A selected species of the Colorado Blue Spruce with grafted tops; color is a deeper, even more perfect blue than that of the Shiner, and of perfect symmetry. Thickly studded with well-formed branches, tapering beautifully to the top and magnificent in its rich blue coloring. Truly the Koster's Blue Spruce is the "height of perfection in Evergreen culture."
5 ft., Select, Heavy Specimens, \$25.00 each; two for \$45.00.
6 ft., Select, Heavy Specimens, \$35.00 each; two for \$65.00.

Trailing Juniper - Juniperus Sabina

Absolutely hardy anywhere, this lovely Juniper is one of the best of them all for general planting. It trails upon the ground, and at maturity its delicate, fern-like branches often cover a space of ground ten to twelve feet in diameter. Dwarf in nature, it makes a very attractive finish to an Evergreen planting, by using it in the foreground. Dark green, feathery and graceful, it is a most desirable Evergreen for the home landscape, and for beds in park planting it is unsurpassed. Every one of my Trailers is a beautiful specimen, and bound to please.

	Each	10
1 to 2 ft., three branches, Specimens	\$1.50	\$12.00
2½ ft. high, 5 ft. across top, extra heavy, Select Specimens	5.00	45.00

Swedish Juniper

This magnificent tree is the best of all the upright Junipers, being very hardy and growing well in any locality. It resembles the Irish Juniper, but is a much better tree. From the standpoint of beauty, form and hardiness, it is pre-eminently the leader among the upright Junipers. Slender, but tall, with numerous closely pressed, upright branches; foliage somewhat feathery, short, and with gray-green coloring. Gives striking effects when used as a decorative tree. My stock is extra well rooted, with good tops of uniform shape and color. Order now before my supply is exhausted.

	Each	10
3 to 3½ ft., Heavy Specimens	\$5.00	\$45.00
4 to 5 ft., Heavy Specimens	6.50	60.00

Retinispora Plumosa

An exceedingly handsome, small Evergreen from Japan, with feathery, light green foliage, more beautiful than any fern. Keep well in the foreground, on account of its dwarf habit. It is not hardy in exposed places, so plant in a sheltered position. Each 10
2 to 3 ft., Select Specimens\$4.00 \$35.00

Retinispora Plumosa Aurea

Like the preceding, a plant of great beauty; foliage soft, plume-like, of a golden yellow; close and compact habit. Plant where it will be sheltered. Each 10
2 to 3 ft., Select Specimens\$4.50 \$40.00



Trailing Juniper—(Sabina).

ONE OF OUR MANY FERRIS BOOSTERS.

Hegins, Pa., R. 2, Box 120, Sept. 30, 1924.

Dear Mr. Ferris: I am writing you a few lines to let you know that you do not have a better pleased customer on your books than I am, because everything is growing fine. Every one of my Strawberries is as strong as possible, and the same is true of the Norway Spruce and fruit trees. Even the flowers are wonders.

Another thing I liked about my order was that I knew just what I had, for everything was tagged with the name on, so there was no guesswork where to plant the early and late fruit trees. If there is anybody that has nicer trees, plants and flowers for the same amount of money and with as little care, I would like to meet him.

Your customer,
GEO. W. SAVIDGE.



'Tis the Apple that Helps Make Us Healthy, Wealthy and Wise

Here in America the Apple needs no introduction. We all like it, from the lowest to the highest. Beneath its rosy and golden skin lies a wealth of flavor that appeals to the taste; it is rich in vitamins, therefore one of the most healthful foods produced. Few meals are planned without the Apple in some form. It is a good fireside companion for a Winter evening, and for the growing boy or girl there is no better or more trusty friend.

The alarming part is that the planting of Apple trees has so decreased in the past ten years. Every year the population is increasing, yet we are sitting back, allowing the Apple crop to diminish, while the price cannot help but soar skyward beyond the reach of the ordinary pocketbook. Are we going to allow ourselves to come to the time when it will be impossible to get them at any price?

If all of us would plant our backyards (and 99 times out of 100 they need some shade in the first place) to Apple trees—if we would only clear up that waste patch of ground that has never paid for itself and plant it to Apple trees, we would soon have the decrease on the wane and the future well cared for. And, for fear you don't know it, where it has been thoroughly tried out, the Apple if given the same care and attention as other farm crops, yields far greater returns per acre. Is it not worth while?

Planting Directions

You will find the distance apart to plant Apple trees on page 9, and how to figure the number of trees to the acre. In setting your trees, follow the same transplanting directions that are given for evergreens (see page 8) with the exception that fruit trees of any kind should never be mulched. Mice will make nests in the mulching and ruin your trees. The ideal place for small fruits such as raspberries is between the rows of Apple trees—they will then both get the shallow cultivation that means best success.

To produce healthy, well-developed fruit, you should spray your trees at least three times a year, with Bordeaux mixture, which can be secured at any drug store. First, they should be sprayed in the cluster bud stage, when the buds show pink but have not opened up; second, when 95 per cent of the petals have fallen; third, three weeks after the second spray.

PRICES ON APPLE AND CRAB TREES

	Each	10	100
Select, heavy trees, with 3-yr. root and 2-yr. top, averaging 4 to 6 ft. high.....	\$0.50	\$4.50	\$40.00

(We can send from 25 to 30 Apple trees of the above sizes by parcel post, if so desired, by giving them a heavy trimming—trimming them back as they should be for planting.)

	Each	10	100
We can furnish the following list of Apple trees in extra heavy, select stock, with four-year root and three-year top, average height 5 to 6½ ft.....	\$0.65	\$6.00	\$55.00

Salome	Delicious	Yellow Transparent	Stayman's
Duchess	Winesap	Gano	Talman Sweet
Grimes Golden	Wealthy	Jonathan	N. W. Greening

Late Winter Apples

Delicious—A Ruler Supreme in the Apple Kingdom.

"Delicious" in every sense of the word, it has held the world record as a Perfect Apple. The fruit is large, rather elongated, and with its rich crimson coloring and extraordinary flavor, peculiarly its own, it commands the highest prices in the Apple market the world over, and is a favorite everywhere. It is known and easily distinguished by the five little knobs on the blossom end which are often light yellow, blending perfectly with its crimson beauty. It is very productive after it comes into bearing, the tree is of free, open growth, and very hardy. Well-known scientists and the best horticulturalists of the country, as well as the apple-eating public consider it the apex of Apple production during the past twenty years. Good keeper and shipper.

The Delicious Apple was originated in Iowa by an Iowa farmer, and the original tree, now cared for by the Horticultural Department of the Iowa State College, is still very healthy and productive. Our hardy, Northern Iowa Grown Delicious are hardy, thrifty trees, and the fruit is unsurpassed. Our trees are genuine Delicious, descended from the original tree stock.

STAYMAN (Stayman's Winesap). Originated by the late Dr. J. Stayman, of Leavenworth, Kansas. Dr. Stayman said years ago in referring to it: "There will come a time when all will want it." It is dark, rich red, with rather indistinct striping. This Apple is not only larger than the old Winesap, but it is even juicier. The tree is very productive and a drouth resister. One of the prime favorites, and widely planted in the Apple belt. There is always a good market for the Stayman.



Yellow Transparent Apples.

WINTER APPLES—Continued

NORTHWESTERN GREENING. The best Greening ever produced and the hardiest. An ideal Winter Apple for northern climates. Fruit large, greenish yellow, firm and fine grained. Tree a thrifty, upright grower; an early and productive bearer. Keeps late into the winter. One of the best for cooking.

TALMAN SWEET. A very large sweet Apple of fine flavor. Fruit creamy yellow, sometimes blushed on sunny side. Tree vigorous and hardy, very productive. Among sweet Apples, it is the universal favorite.

Salome

The Finest Winter Apple for the North.

Here is a Winter Apple that grows larger, has a better flavor and a better color in the northern climate than in the South. I have planted several orchards of Salome trees myself, here in northern Iowa, and I have found them to be the biggest and best producers for this climate of all the late Winter varieties. The fruit is medium in size, rich, dark red color, and of extra good quality. When stored, it will keep until May—in fact, its crisp, juicy flesh is much improved after it has been stored for a while. It has been so thoroughly tried out in the colder sections and has given such good satisfaction there, that it is deserving of a far wider planting. With such a variety as the Salome, you planters in the Dakotas, Minnesota, northern Wisconsin and Iowa can prove that there is no country where high quality Apples cannot be grown.

McINTOSH. Large, deep crimson, and beautiful. Tree is hardy and vigorous. Flesh pure white, crisp and very tender. A good regular bearer. Has justly proved itself a favorite in the Apple belt, and a good market variety. November to January.

FAMEUSE (Snow Apple). This is a well known Apple, and one that is in great demand. Medium in size, color deep crimson. The pure white flesh contrasts beautifully with its deep, rich color. Productive. November.

GANO (Black Ben Davis). Fruit is bright red on yellow ground with no stripes; large and oblong in shape, surface smooth and polished. Tree healthy, vigorous; prolific bearer. A good keeper. January to April.

Grimes Golden

The Finest Yellow Winter Apple Grown.

The Grimes Golden is one of the most popular Apples in cultivation. Tree strong, thrifty grower. Fruit medium to large, cylindrical in shape; regular surface, yellow veined, russeted; flesh yellow, firm, very fine grained, juicy, flavor sub-acid. Rich quality. For desert, cooking and market. Hardy. November to December.

Jonathan

One of the Best Sellers Ever Produced.

Too much cannot be said of this fine Winter Apple. Fruit is extremely attractive with its bright red skin, quality of the finest, flavor of the best. Flesh is tender and very crisp, very juicy, with a smooth and glossy skin that makes it a good seller everywhere. Tree vigorous in growth. An old-time favorite with all Apple growers. November to May.



McIntosh.

BALDWIN. A large, dark red Apple; sub-acid, good flavor. Productive and profitable. November to March.

ARKANSAS BLACK. Fruit medium to large, beautiful dark color, almost black. Flesh is yellowish, slightly sub-acid, crisp and of fine flavor. One of the best Apples for cooking purposes. January to March.

ROMAN STEM. One of the finest of the late keepers. Fruit medium in size, and of a greenish yellow color. Excellent as a cooking Apple, and also very fine as a fresh fruit with its rich, almost pear-like flavor. Flesh is tender and juicy. December to Spring.

IOWA BLUSH. A rather small, but beautiful Apple with its red blush suffusing a greenish yellow background. Well known for its excellent tart flavor. November to January.

MALINDA. A reliable Winter Apple of medium size. One of the hardiest. When ripe a beautiful yellow, somewhat blushed. Best in Spring after it becomes mellow. Sheep-nose shape.

WINTER BANANA. A very handsome, large yellow Apple with pinkish red blush. Strikingly attractive. A dessert Apple of finest quality. Good tree, early bearer, good cropper, profitable.

BEN DAVIS. An old-timer, and one of the best for market and cooking. Quality good. Fruit large and round; yellow splashed with red. Will keep well until Spring.

WILLOW TWIG. One of the very late keepers that lasts till the fresh Apples are here again. Fruit is large and round, slightly conical, of a greenish yellow color, faintly striped with red. A good market sort, and excellent for cooking.



Grimes Golden.

Fall and Early Winter Apples

Wealthy

The Prime Favorite Fall Apple Everywhere.

One of the best and finest Apples grown. Very hardy, grows and bears well in the North as well as the South. Comes into bearing earlier than most other Apples, often fruiting the second year after setting in the orchard. Medium to large size, round in shape. Extremely attractive with its light yellow, smooth skin almost completely covered with dark red; flesh white, fine, juicy and sub-acid. Tree a vigorous grower, and an abundant bearer.

WOLF RIVER. A very large variety, splashed and streaked with red; flesh white and coarse, juicy, mild, sub-acid.

WINESAP. One of the best little Apples grown; red. Fine for eating; one of the best for baking. Shape is round, conical, sometimes obscurely flattened. Flesh yellowish, firm, crisp, with a rich, rather acid flavor. Keeps through the Winter. A very good market sort.

HIBERNAL. The hardest Apple known; an early and abundant bearer. Fruit large, and excellent for cooking; tart flavor. Is planted successfully as



DELICIOUS-The Grandest Fancy Apple yet Produced

far North as Manitoba.

Summer Apples

LIVELAND. This Apple was originated in Russia. One of the standards for the home orchard. Fruit is medium to large; splashed and shaded with red; flesh stained with red; fine, tender, juicy, flavor sub-acid, and keeps well. A real beauty. August to November.

EARLY HARVEST. Tree healthy; vigorous and a good bearer. Fruit medium size, somewhat flattened in shape; skin smooth and a clear, waxy yellow, rarely blushed; flesh tender; juicy, acid to sub-acid; flavor good.

RED JUNE. Medium size, skin red; flesh white, tender, juicy, sub-acid; an abundant bearer.

RED ASTRACHAN. Very productive, fruit of good size; dark red. In fact, it is the best early red Apple for the northern climate. Tree an upright grower; vigorous, hardy and productive.

Yellow Transparent

It Beats All Summer Yellow Apples.

Color a rich, transparent yellow, with a warm faint blush on the sunny side; flesh is melting, juicy, sub-acid. The tree is very hardy, especially adapted for a cold climate, and bears very young. Fruit is round, medium size, and of excellent quality. One of the Russian varieties.

Duchess of Oldenburg

The Top of the List for Summer Cooking Apples.

An old-time favorite that retains its popularity from year to year. A nearly perfect round Apple, beautiful with its streaks of red and yellow. Flesh tender, juicy, and pleasant. Tree a vigorous grower, early and abundant bearer. There is room for the Duchess in every home planting.

Crab Apples

HYSLOP. Tree a moderate grower, making a beautiful-shaped, thrifty tree; bears young; fruit large, nearly round, slightly flattened at the ends; skin smooth, color dark rich red on yellow ground. Flavor very good, but doesn't keep well, gets mealy. Its high color commands a fancy market price.

TRANSCENDENT. A large, beautiful tree, and a very strong grower; an early and abundant bearer. Fruit large and round; skin smooth, rich yellow shaded with red. Flesh firm and crisp, yellowish, fine grained and very juicy, acid. Fine for jelly and pickles.

WHITNEY. Tree a thrifty, upright grower; fruit large, skin smooth, striped and splashed with carmine; flesh firm, juicy, of pleasant flavor. One of the best Crab Apples, very popular for pickles. Fruit in size and quality equal to many Apples. August. Our Whitney trees are No. 1, but will average only about 3 to 4 feet high. Price same as on all other Apple and Crab trees.



Stayman's Winesap.

Native Plums

Autumn Wouldn't Be Autumn Without the Native Plums.



Genevieve Ferris.

Native Plums are hardy, produce large crops, mostly of early and medium-sized highly-colored fruit—fruit that is ideal for canning, pies, or for fresh fruit. They seem to thrive in the most unfavorable locations of soil and climate. When planting this type, several varieties should be planted in the same orchard so that the blossoms will fertilize properly.

The New Genevieve Plum

Select, No. 1, average 4 to 6 ft. Each 10
 \$0.50 \$4.50 \$12.00

By far the most superior of the Native Plums. The Genevieve Plum is still new, yet attracting the greatest attention where it has been planted. Its immense size, extreme hardness, delicious flavor, and abundant crops unite

in making it far above the ordinary varieties. One that is bound to be planted in every orchard and home planting. Unlike most Plums, the blossoms of the Genevieve do not open up until late in the Spring, thus eliminating any possible chance of the fruit buds being injured by frost. Fruit is a beautiful rich red color, rather round. It cannot be surpassed, either for cooking or for eating fresh from the tree. These new, superior fruits that I am growing and introducing are always difficult to name suitably. This luscious Plum I am proud to name in honor of my eldest daughter, Genevieve, whose picture you will find at the left.

Prices on De Soto, Forest Garden, Hammer, Hawkeye, Wild Goose, Terry, Wolf and Wyant Plums: Each 10 100
 4 to 5 ft., No. 1 trees \$0.50 \$4.50 \$35.00

DE SOTO. Fine for eating or canning. Tree a moderate grower. Bears young and profusely. Hardy throughout the North. Is best planted on moist, rich ground and the fruit thinned. Use this variety for fertilizing. Season medium.

FOREST GARDEN. A strong growing tree; needs a little attention to keep in shape to avoid splitting and breaking of limbs. A profuse bearer and perfectly hardy; nearly round, mottled red and yellow; rich and sweet. Season medium.

HAMMER. Large, oblong, light red, of fine quality, profusely fruitful; fine for canning or market. Season late.

HAWKEYE. Large; color light mottled red; Plum of superior quality. Firm; carries well to market. Tree hardy and thrifty; annual bearer. A splendid fertilizer. Season late.

WILD GOOSE. A very popular fruit. Tree vigorous, upright grower; fruit medium to large; rich golden yellow, shaded with red; flesh yellow and juicy; flavor rich and good. Early.



Genevieve Plums.

Terry

A "Peach" of a Plum

When it comes to large size, hardness, vigor of tree and quality of fruit, the popular Terry is a leader. The fruit is often 5 3/4 inches in circumference, and the color a bright clear red with small white dots. Juicy flesh of very fine flavor. You will never make a mistake in including the Terry in your planting.

WOLF. Fruit large, a perfect freestone. Quality fine; superb for cooking and for serving fresh with sugar. Tree a good grower and hardy. Season medium.

WYANT. Large, conical Plum, dark red color; thick skin; peels readily; flesh firm; freestone, and of excellent quality. Native of Iowa and hardy. Season medium.

Prof. Hansen's Hybrid Cherry-Plums

Hanska Opata Sapa Waneta

Wonderful, Large Fruits That You Would Think Could Grow Only in a Warm, Semi-Tropical Climate—Yet These Hansen's Plums Give Better Results in the North Than They do in the South.

No. 1 trees, 4 to 5 ft. high Each 10 100
 \$0.60 \$5.00 \$45.00

Most everyone has at least heard of Prof. Hansen's famous Cherry-Plums by this time, and innumerable planters have had experience with them and know just how valuable they are. They were originated by Prof. Hansen of the South Dakota Experimental Station, who has proved that delicious fruits, especially Plums, can come out of the North as well as the warmer climes.

They are heartily acclaimed as being among the best if not the best of the Plums, and certainly if orders have anything to do with it, we know they are the most popular of them all.

The fruit is larger than the ordinary varieties, with a rich flavor as good or better than the apricot. Trees are very hardy, and well adapted to our Northern states. One of the chief characteristics of these Cherry-Plums is their youthful bearing, young trees often bearing fruit the year after planting. On account of their superiority in every respect, no one can afford to do without them.

Our stock is limited to a few thousand each of these Plums and we advise you to order at once. The descriptions given on next page were sent to us by Prof. Hansen, and can be absolutely relied upon with the following exception, that the Hansen's Hybrids produce considerably larger fruit here in Iowa than they do in South Dakota, that they are hardy everywhere, and we have seen them bear abundantly in the nursery row the first year after planting. Do not cheat yourself and family by overlooking them.



Waneta Plum.

Hansen's Hybrid Cherry-Plums—Continued

Hanska (Bright Red)

The female parent is a seedling of our wild Northwestern Plum (*Prunus Americana*); the male parent is the very large, firm-fleshed, fragrant, apricot Plum of China (*Prunus Simoni*), popular in the orchards of California. The Hanska fruited first in 1906 and 1907 on two- and three-year-old trees in nursery row. In fruit the Hanska closely resembles its Chinese parent in form, color, fragrance, quality and firmness of flesh. Exhibited at the South Dakota State Fair three years in succession, the fruit of this variety has been much admired for its beautiful color which is bright red with heavy blue bloom, firm yellow flesh, good quality and rich fragrance; fruit in 1909 was 1½ to 1¾ inches in diameter. When cooked the strong apricot flavor is brought out to perfection, entirely unlike any native plum. The flat shape also distinguishes it from all the other hardy Plums grown in the Northwest.

Sapa (Rich Purple)

One-year trees set out in the Spring of 1908 bore freely in 1909 in many places. Specimens of the Sapa grown in Minnesota took first prize as a seedling Plum at the Minnesota State Fair in 1909. In 1909 our best Sapas at Brookings were 1¾ inches in diameter, weight ¾ ounces, on one-year-old trees set the preceding year and bearing a heavy crop. The rich purple color of the skin is dulled at first by being overspread with a thin gray, which disappears as the fruit attains full ripeness. Season extremely early.

Opata (Dark Purplish Red)

The excellent quality of the Opata makes it worthy of wide popularity for table and culinary use. Female parent, the Dakota Sand Cherry; male parent, the Gold Plum, a very large hybrid Japanese variety originated by Luther Burbank and for which three thousand dollars was paid when first introduced. Opata is a Plum tree in habit, of vigorous growth, and forms fruit buds freely on one-year-old shoots in nursery; foliage large and glossy. Fruit 1 3-16 inches in diameter, dark purplish red with blue bloom; weight ½ ounce; flesh green and firm; flavor very pleasant, combining the sprightly acid of the Sand Cherry with the rich sweetness of the Gold Plum. Excellent for eating out of hand. The thin skin can be chewed and eaten, as it is entirely free from acerbity. Pit very small. Season extremely early.

Waneta (Reddish Purple)

The Waneta is unquestionably Prof. Hansen's masterpiece in Plums. His description is, "My belief is that in this variety I have combined the best points of the native and Japanese Plum. It is the largest of 10,000 seedlings. In size it is two inches in diameter and weighs two ounces. It is a cross between the Apple Plum, a large Japanese variety, and the Terry, the largest of the native varieties. We regard this as the most promising Plum that has been offered to our planters since the settlement of the country. All the reports coming in from those who have tried it describe the Waneta as bearing early and producing the largest fruit that has been raised in their locality."

Peaches

Few fruits enjoy a greater popularity than Peaches. With delicious flavor, they combine attractive appearance, and the uses to which this fruit may be put are so many that there are never enough on hand for all. This applies especially to small communities in which farmers and fruit growers can establish a thriving business without serious effort.

Our climate is too cold for a good production of Peaches. However, we have a limited stock of healthy, well-grown trees of the best fruiting varieties for our customers who have the good fortune to live in a climate where this delicious fruit can be produced successfully. Not hardy in northern latitudes. To produce the best Peaches, the ground should be kept clean and mellow, the trees should be pruned yearly, and carefully sprayed.

	Each	10
Select, 4 to 5 ft.	\$0.50	\$4.50

ALEXANDER. An early Peach, hardy and of very good quality. Freestone.

CRAWFORD'S EARLY. Excellent quality. Fruit large; yellow with red blush. Freestone.

CRAWFORD'S LATE. Large variety. Flesh yellow and of good quality. Freestone.

CROSBY. Medium in size, bright yellow with streaks of red. Very hardy, good quality and a prolific bearer.

ELBERTA. One of the best market sorts. Large and very productive.



Pears

While we are too far North to grow the Pear with any great success, for our customers who reside in localities where it is well acclimated, we have a limited number of hardy Pear trees. They are strong, well developed trees, best and most popular varieties. The high prices which the Pear commands on the market will repay one to give the tree the high cultivation necessary to secure the best results. Pears prefer a strong loam, but succeed well in a great variety of soils, and upon any land that will produce a good crop of vegetables, grain, etc.

	Each	10
Select, 4 to 5 ft.	\$0.70	\$6.00

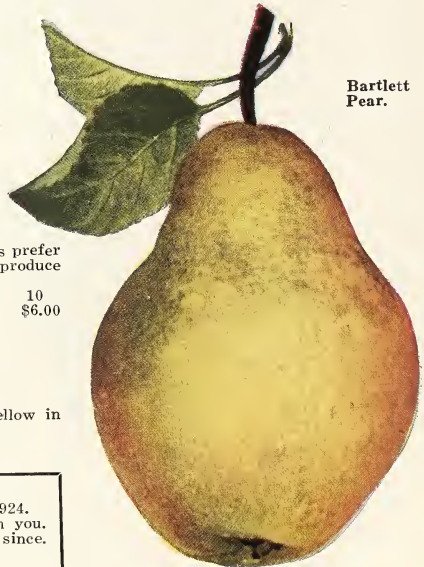
BARTLETT. Large yellow Pear; fine flavor. Very popular.

CLAPP'S FAVORITE. Light yellow with brown dots; fruit large, good flavor.

DUCHESS. One of the largest and best. Greenish yellow with russet spots.

KIEFFER. This is the well known canning Pear, hardy, prolific; fruit large and yellow in color with touches of carmine.

SECKEL. A small variety but of excellent quality. Very productive.



Bartlett Pear.

FERRIS' GRAPES ARE GROWING EVERYWHERE.

Louisville, Kentucky, R. No. A, Box 64K, Sept. 25, 1924.

Gentlemen:—Last Spring I received 400 two-year-old Concord Grape Vines from you. I want to say to you that not a single solitary grape vine died and none have died since. They are all thriving. I consider that wonderful.

Yours truly,
J. S. ROBERTS.

Hardy Cherries

Not a Case of You Can Afford Them, But a Case of You Cannot Afford to Be Without Them.

How the birds and children love Cherry time! And where is the man who doesn't relish a big juicy Cherry pie? Truly one of the most popular and healthful of all fruits, how easily the Cherry has come to the front and is being more widely planted every year.

The tree alone is ornamental, and can be planted without hesitation as a lawn tree—it is as much of a home tree as an orchard tree. For commercial purposes there are few orchards quite as profitable as a Cherry orchard, because there is, perhaps, no fruit always so much in demand and always bringing good prices.

Easy to plant, it will thrive on any kind of soil but a wet one, and they are infected with fewer diseases and insects than any other fruit trees. It is not necessary to spray the Cherry tree, although, of course, spraying will benefit the tree. The San Jose scale never bothers Cherry trees.

Our trees are hardy, vigorous and frost-resistant, easily grown wherever the apple succeeds, and are late bloomers. Few fruit trees will bear such an abundant amount of luscious fruit year after year with as little attention and expense.

	Each	10	100
3½ to 5 ft., 2-yr.	\$0.60	\$5.50	\$50.00
4½ to 6 ft., extra heavy, select85	8.00	70.00

Houghton Gooseberries,



Gooseberries

Where There Is a Gooseberry Pie—There Is Sure to Be a Satisfied Family

One of the most profitable of all small fruits, as they are entirely hardy, easy to plant and care for, and will bring big returns. What you cannot use for your early Summer pies and preserves are easily marketed and bring good prices. One or two rows across the end of your garden will go a long way towards making it 100 per cent perfect. Plant in good growing soil and keep free from weeds.

If desired by parcel post, add 5c to the each rate, 10c to the dozen rate, and 15c to the 25 rate to cover the cost of packing and postage.

HOUGHTON. The old, well-known sort; pale red, sweet and good. Medium size, but a productive, healthy and very reliable Gooseberry. While they last, 12c each; 10 for \$1.00; 25 for \$2.00.

DOWNING. Fruit very large, flesh whitish green, soft, juicy and good. One of the best. A favorite for family use, and also a good market variety. No. 1 plants, 30c each; 12 for \$2.75; 25 for \$5.00.



Montmorency Cherries.

EARLY RICHMOND. Everywhere the most popular. Tree strong, thrifty grower, making a large, symmetrical head. Fruit medium size, dark red and juicy; acid flavor and especially valuable for cooking purposes; tree an early and abundant bearer.

MONTMORENCY. A beautiful, large, red, rich, acid Cherry; much larger and firmer than Early Richmond, and a week or ten days later in ripening. Being extraordinarily prolific and very hardy, it can be recommended as a variety of great value. Valuable for canning and preserving. The Montmorency Cherry is in great favor wherever Cherries are grown. The tree is a strong, upright grower. There is always a heavy demand for this variety.

Currants

The Gay Red Color and Sprightly Flavor of Currant Jelly Is a Positive Necessity to the Wintertime Dinner Table

Is there a garden spot complete without a few of these profitable and hardy plants, or a fruit cellar perfect without its Currant jelly, preserves and wine? Easily planted and cared for, and any insect growth may be easily checked by the early use of hellebore.

If desired by parcel post, add 5c to the each rate, 10c to the dozen rate and 15c to the 25 rate to cover the cost of packing and postage.

Red Currants

Strong, No. 1 plants, 20c each; 12 for \$1.60; 25 for \$3.00.

CHERRY. Largest of all Currants; berries sometimes one-half inch in diameter; bunches short; plant very vigorous and productive when grown on good soil and cultivated.

FAY'S PROLIFIC. For size, beauty, and productiveness, the most remarkable red Currant ever grown. The berry is fully equal to the Cherry Currant, while the flavor is much superior. The cluster is double the length on an average, and the fruit hangs on well, never dropping.

LONDON MARKET. A newer variety of the red Currants, but where it has been well tried out, it is regarded as the greatest market variety of them all. Plant is a strong grower, extremely vigorous, with perfect foliage. Fruit is large, bright red, and is borne in enormous crops. For either home or market use, London Market will please you.

White Currants

No. 1 plants, 30c each; 12 for \$2.00; 25 for \$3.50.

WHITE GRAPE CURRANT. Very large, yellowish white, sweet or very mild sub-acid; excellent for table. The most productive of the white sorts.

Fay's Prolific Currants.



FEDERAL QUARANTINE ON CURRANTS AND GOOSEBERRIES.

The Government has established a quarantine, forbidding nurserymen from shipping Currants and Gooseberries into Nebraska, the Dakotas, Kansas, Oklahoma, Texas, and all other states west of this line. For our western trade, we are having Gooseberries and Currants grown at a branch nursery across the line and we ship these plants direct from there to our customers, but on account of the extra work and expense involved, we have to charge our customers in that district 5c per plant more. Be sure to add 5c per plant, on Currants and Gooseberries only, if you live in the western half of the United States.

Raspberries

Of All the Summertime Desserts, There is Nothing to Equal Raspberries

The Raspberry needs no introduction—it speaks for itself. For many years it has enjoyed a great popularity throughout the country. For fresh fruit it can not be excelled, and the jams and jellies made from this luscious berry are in every home. A bed will not only give you pleasure, but also profit as they command high market prices and are always in demand. They are easily cultivated, and with a little care are one of the most profitable of the small fruits.

Any good growing soil will do for raspberries, but a light, loamy one is preferable. An ideal place is between the trees in your young orchard. Take care in setting the Black Raspberries that you do not get them too deep. They start from the tip and are easily smothered when planted deep. Plant shallow, and for correct distance apart to set the plants, see page 9. Do not cultivate deeply, as the roots are just below the surface of the ground. Mulch heavily with straw early in June, which will conserve the moisture around them and make the last picking as good as the first. The wood which fruited this year should be cut out after the last picking and burned up. Trim back the ends of the canes about one-third early in the Spring of each year. If liable to Winter-kill bend the canes over to almost horizontal position and partly cover with earth, removing same in early Spring.



Imogene Red Raspberries.

The Two Finest Red Raspberries Grown—Imogene and Latham

A reliable nurseryman is naturally conservative in offering new things to his customers until he has given them a thorough trial. Now, after several years of rigid inspection and try-outs we cannot say enough of these two wonderful varieties to our customers. They are the height of perfection in quality, hardiness, size and productiveness, and our only regret is that we do not have many times the number of plants that we have to offer, as they will nowhere near go around. We cannot urge you too strongly to order your wants early, as there is an enormous demand for these two extraordinary raspberries.

Latham Red Raspberry

Prices, 12 for \$1.00; 25 for \$2.00; 100 for \$6.00. If desired by parcel post, add 10c for 12; 15c for 25, and 20c for 100, to cover the cost of packing and postage.

The Latham Red Raspberry, or Minnesota No. 4 as it is sometimes called, was originated at the Minnesota State Breeding Farm, and until the advent of the Imogene Raspberry, was considered by far the finest Red Raspberry introduced in the Middle West. First of all, it is extraordinarily large in size, larger than all of the common reds, and when ripe is a beautiful bright red color.

Another remarkable feature of the Latham is its extreme hardiness. Originating in Minnesota where Winters are severely cold, it is naturally vigorous and rugged, sharing honors with the Imogene for being the hardest Raspberry yet produced. It has given remarkable success even to the Canadian line.

Not content with the above rare qualities, the Latham is an unusual producer. It is not considered an everbearer, but the season of ripening is very long, extending over a month and sometimes a month and a half, and the crop is a very heavy one. One planter tells us that he has already produced \$1,800 worth of fruit per acre from his planting of Latham. It is an unusually vigorous, upright grower, and a strong plant producer. Canes are thornless, dark red; foliage heavy and dark green. The quality of the fruit is extremely good, being above that of the standard red Raspberries. Berries ripen evenly and hold well on the vine. The attractiveness of the berry, its firmness, quality and productivity makes it especially desirable for home or commercial use.

Prof. C. V. Holsinger, Extension Professor of Horticulture of the Iowa State College, Ames, Iowa, says: "I only hope you will be

able to grow plants enough to put this berry in the hands of as many people as possible." We have enlarged our plantings and greatly increased the output, but the demand steadily mounts higher. We urge everyone to place their orders as early as possible, for the supply will nowhere near meet the demand.

Imogene Red Raspberry

Prices, 12 for \$2.50; 25 for \$4.00; 100 for \$15.00. If desired by parcel post, add 10c for 12, 15c for 25, and 20c per 100, to cover the cost of packing and postage.

The Imogene Raspberry is quite similar to the Latham, probably coming from the same origin, but more highly bred up. I purchased original plants from a breeding farm in Minnesota, and finding the plants and fruit with even more perfect characteristics than the Latham, I have devoted a great deal of time and land to the raising of this wonderful new Raspberry for Ferris customers.

The canes are more vigorous than the Latham and grow denser; the fruit is even larger, perhaps a little deeper in color and of a quality fully equal to the Latham. They are extremely hardy, this fact being especially noteworthy for the reason that it is a rarity for the Northern Minnesota and Wisconsin planter to grow Raspberries with any success. Planters in these two sections are having exactly as good results with the Imogene as we are here in our more temperate climate, and give them little or no Winter protection.

Horticulturists of note, who have experimented with the Imogene and Latham Red Raspberries, say that in growing them side by side they have found the difference between the two quite marked, and that the Imogene is more perfect in nearly every way.

When I purchased this Raspberry, it had no particular name, and as I was so deeply impressed with it, I have been looking far and wide for a suitable name. In the oval you will find a picture of my little girl, Imogene, the baby of my family, and we think she is about the finest little girl there is anywhere. So I am giving this Raspberry her name, thinking to honor both of them.

I have a select lot of good, strong plants, but they are limited in number as I have been growing them for only a few years. You will want at least two rows of these berries in your garden, and when you once get a start you will be very apt to take out all other plants you have there and devote all of your Raspberry bed to the Imogene.

Red Raspberries Common Varieties

These are the old-time Red Raspberries that were excellent in their day, but are now wholly eclipsed by the wonderful Imogene and Latham Red Raspberries. The difference in price between them is so small, and the superiority of the Latham and Imogene berries is so marked that it does not pay the ordinary planter to bother with these old-fashioned varieties. We, by all means, advise all of our customers to put out the Imogene or Latham Red Raspberries—they are larger berries, harder and much more prolific than any others.

Prices on the Common Reds: 12 for 65c; 25 for \$1.20; 100 for \$4.00; 1,000 for \$35.00. If desired by parcel post, add 10c for 12; 15c for 25, or 20c per hundred, to cover cost of packing and postage.

ST. REGIS EVERBEARING. A so-called Everbearing Raspberry, the bearing period extending over several weeks. A prolific variety, berry rather small, bright crimson, and of fine quality. A good canner.

CUTHBERT. Large berries, rich crimson in color, and of good quality. A good shipper. Quite hardy.

KING. An early ripening berry, bright scarlet in color, of good size. Excellent quality, and the canes very productive.

Black Raspberries

Black Raspberry Tips: 12 for 50c; 25 for \$1.00; 100 for \$3.25; 1,000 for \$25.00.
Black Raspberry Transplants: 15c each; 12 for \$1.35. If desired by parcel post, add 10c for 12, 15c for 25, or 20c per hundred, to cover cost of packing and postage.

CUMBERLAND. The largest Black Raspberry known, fruit frequently seven-eighths to fifteen-sixteenths of an inch in diameter. Its immense size, firmness, and great productiveness entitle it to first consideration; unusually strong grower, throwing up stout, stocky canes; perfectly hardy. By far the most profitable Black Raspberry grown for both home and market use.

GREGG. This is a large, late, blue-black berry. Produces heavy growing canes that branch out sparingly; hardy; berries firm and fine quality. Ripens late.

KANSAS. A seedling originated at Lawrence, Kansas. Berries very large, jet black, and of the very best quality. It stands the trying climate of Iowa.

PLUM FARMER. A profitable market variety, as the fruit matures almost all at one time. Medium large in size, jet black, quality excellent. Very attractive when picked and a good market sort. Cane vigorous and stocky in growth.



Plum Farmer Raspberries.

Columbian Purple Raspberry

Prices, 12 for \$1.00; 25 for \$1.75; 100 for \$6.00. If desired by parcel post, add 10c for 12, 15c for 25, and 20c for 100, to cover the cost of packing and postage.

The Columbian is by far the finest of the Purple Raspberries, being large in size, with rich, juicy pulp of a most delicious flavor. It is very desirable either for canning or for fresh fruit, and is a great shipper. They are propagated from tips, but are only semi-hardy. It is a shame they are not hardier—they are truly wonderful berries.

To our customers who live in the big Columbian Raspberry districts, or places where they are entirely hardy, we are glad to offer No. 1 plants at the above low prices.



Snyder Blackberry.

Blackberries

Grow Your Own From Ferris' Plants, and Afford that Tempting Luxury—Blackberry Pie

The growing of this very delicious and healthful fruit is attended with so little trouble and expense that every garden, however small, should have at least fifty plants. For cooking purposes, they are unsurpassed—blackberry jam cannot be beaten—and will yield a dark wine of excellent quality.

The plants require well drained land and do best when confined to narrow, continuous rows and are well mulched under the bushes. Keep the ground light and clean by cultivation, and fertilize annually for best fruiting results. To avoid a too strong growth and straggling habit, the ends of the shoots must be occasionally pinched in during the growing season, thereby encouraging the plants to form dwarf bushes, making it easier to work among them, and at the same time causing the plants to produce a larger crop and finer berries.

Prices: 12 for \$1.00; 25 for \$1.50; 100 for \$4.50; 200 or more at \$4.00 per hundred. If desired by parcel post, add 10c to the 12 rate, 15c to 25 rate, and 25c to the 100 rate, to cover cost of packing and postage.

EARLY HARVEST. This is one of the earliest Blackberries but needs Winter protection. Fruit medium size, quality good, and a prolific bearer.

RATHBUN. One of the newer varieties that has been tested over a wide area, and is said to surpass any Blackberry on the market. Berries large, jet black and of very fine quality. Ripens early.

SNYDER. The standard early Blackberry for the north country. The canes are healthy, hardy and very productive. It is an upright grower, stiff and abundantly able to hold up the enormous crop of fruit. The berries are medium to large in size, round in shape, very firm and of good quality when well ripened. The canes are reddish in color and extremely hardy. The most universally grown Blackberry of them all.

STONE'S HARDY. Claimed to be even harder than Snyder. A vigorous grower, berries glossy black and of good flavor. About eight days later than Snyder.

Ferris First-Quality Strawberries

The Strawberry needs no description—everyone knows them as well as they do their A B C's. There are more home plantings of Strawberries than of any other small fruit, for they are so easily planted and cared for, and succeed in any kind of soil that is adapted to ordinary farm or garden crops. In commercial plantings, the Strawberry probably yields the greatest profits of any.

Planting Directions: Sandy soil well enriched is the ideal soil. The soil should be thoroughly plowed or spaded to a good depth, well drained and enriched. Any fertilizer is all right with the exception of cow manure, which is liable to breed grubs. For distance apart to set the plants, see page 9. It will take around 9,680 Dunlap or spring-bearing plants to the acre, or 14,520 everbearing plants per acre.

To produce fine large fruit, keep in hills, and do not allow the runners to run all over the patch. The ground must be kept clean and well cultivated. The blossoms and runners on the Everbearing should be cut off until the last of July.

As soon as the ground is frozen to the depth of one inch, cover with clean straw, leaves or wild hay, but be very careful not to cover with tame hay as it would seed the ground and spoil your bed. Remove cover and place between the rows as soon as it quits freezing in the Spring. Fertilize heavily with well-rotted manure or artificial fertilizer.

Our Strawberry plants are all "perfect" varieties; that is, you need not plant other varieties with them to fertilize their bloom. They are all grown on new ground and given constant care to produce good, strong fruiting plants for our customers—ideal plants for either home or commercial plantings.

Spring Bearing Varieties

DUNLAP. Of pronounced Warfield type. It is a favorite wherever it has been tried. Begins to ripen soon after the earliest sorts and continues until near the end of the season. Fruit is large, conical in form, color deep rich red, flesh red and has a sprightly flavor. One of the best commercial sorts and largely planted everywhere. The plant is almost perfect in its way. We have several times called attention to its toughness and ability to endure hardships. With us it has always proven highly productive. Fruit is firm, a splendid keeper and shipper, most excellent in quality, and one of the best canning berries we have ever known. Its season is second early and it bears a long time. There is no known variety that is so universally popular nor one that is so extensively grown as the Senator Dunlap. Some one has said that it was the safest variety for the new beginner, as it would bear fruit in spite of neglect and ill treatment, and while this may be true in a degree, it is also true that it will well repay the most careful culture. 50 for 50c; 100 for 75c; 500 for \$3.50; 1,000 for \$6.00. If desired by parcel post, add 10c per hundred to cover cost of postage, packing and trimming.

DR. BURRILL. The Famous Million Dollar Strawberry. You have all heard of this famous, much advertised, one million dollar Strawberry. The plants are being sold at fabulous prices by the originator and tree agents throughout the United States. It is a wonderful Strawberry; a very vigorous grower; long rooted, drought resisting plant; a little later than the Dunlap; fruit very large, dark red, fancy and delicious berries. It stands shipping better than other varieties, and we are very glad, indeed, to be able to offer genuine, true-to-name, Dr. Burrill plants at the following extremely low prices. 50c for 100; 500 for \$2.00; 1,000 for \$3.75. If desired by parcel post, add 10c per hundred to cover cost of postage, packing and trimming.

AROMA. A fine old variety that has retained its popularity down through the years. Fruit large, bright red and of delicious flavor. A good shipper on account of its firm texture. The period of bearing is long and it is a heavy fruiter, and is in great demand both in the North and South—it is one of the very best late varieties. 50 for 50c; 100 for 75c; 500 for \$3.50; 1,000 for \$6.00. If desired by parcel post, add 10c per 100 for trimming and postage.

WARFIELD. An old favorite; one of the best berries grown. Fruit resembles the Dunlap very much, is medium in size, dark red and of a very rich flavor. Holds its shape extremely well in shipping, and for table and canning use it is unsurpassed. 50 for 50c; 100 for 75c; 500 for \$3.50; 1,000 for \$6.00. If desired by parcel post, add 10c per 100 for trimming, packing and postage.

Progressive Improved Everbearing Strawberries.



Ferris Improved Progressive and Champion Everbearing Strawberries

Strawberries for the late Summer and Fall months are surely a luxury, but you can have them if you buy Ferris plants and grow your own.

If you should wake up some nice Fall day and wish with all your might for a big dish of juicy, luscious Strawberries and cream for breakfast, yet know such a thing was impossible because at the stores they were too high priced for your pocketbook and you hadn't a Strawberry bed of your own—then, a proud neighbor brought over a heaping quart box of them and you and your family had one of the biggest treats in your lives and ate to your heart's content—Oh Boy! "Ain't it a grand and glorious feeling?"

I know absolutely if this would happen to you, you would be the first to order enough plants for that little space out in your back yard. Why, it would give you all the berries you wanted at the "in-between" time when fresh berries are about all gone. Strawberries are delicious any time, but in the Fall they are sweeter than in the Spring and the flavor is even better.

If your Fall berries should more than take care of your family's wants, and often they will bear longer and much more than you expect, there is always a ready market for them, and the price at that season is nearly double what it is in the Spring. If you have a plot of ground going to waste, it would pay and pay big to plant it to Ferris Everbearing Strawberries. My Everbearing plants had extra fine care and the season was unusually favorable. I wish you could have seen them in my nursery during August, September and October—clear up to frost—the healthy, stocky plants with a crowning glory of big, red, ripe, mouth-watering Strawberries that we gathered every day. 'Twas a feast in every way. Order now, you who enjoy Strawberries. You will be more than thankful all the days of your life for starting in when you did and regret not having done it long before.

Progressive Improved Everbearing Strawberries

50 for \$1.00; 100 for \$1.50; 500 or more at \$1.25 per 100. If desired by parcel post, add 10c per hundred to cover cost of packing, postage and trimming.

The remarkable Progressive Everbearing Strawberry was originated by a Grundy County farmer, at no great distance from my nursery. It is an Iowa product pure and simple, and when introduced was the finest by far of all the Everbearers. I developed my Improved Progressive from this strain, breeding them up so that they are still larger than type, more productive, and of the fine flavor and rich color of the best standard varieties.

When planted in April and the transplanting directions carefully followed, Ferris Improved Progressive plants will begin bearing in August; my plants in the nursery begin to bear as early as July sometimes. I have personally picked 136 berries from one plant in August, and once got four quarts of berries from fifteen plants at one picking. The second season the Progressive Improved will start bearing about two weeks earlier than the Dunlap, making them the first Strawberries of the season. They will then stop bearing for awhile, and have a heavy crop in the Fall. This is continuous from July until frost. The Improved Progressive with its large fine berries is a splendid market variety.

Champion Everbearing Strawberries

50 for \$1.25; 100 for \$1.75; 500 or more at \$1.50 per hundred. If desired by parcel post, add 10c per 100, to cover cost of postage, packing and trimming.

Yes, here it is—the Champion Everbearing Strawberry that is exciting so many planters, and justly so. It is a wonder. We have thoroughly tried it out here at the nursery, so that we know the facts about it and do not simply offer it as an experiment to our customers. The berries are even larger than Progressive, quality as good or better, and of a rich red color. It is a big, sure cropper, and a market berry of the highest value. The long, drought-resisting roots are capable of producing an excellent crop even after a dry Summer. The large commercial growers have found that they can always count on the Champion for Fall berries in great abundance, and from them they derive a large part of their year's profits. Remember in planting Everbearing Strawberries to plant them in good rich soil, keeping them free from weeds and well cultivated, and the blossoms and runners pinched off until the middle or last of July.



Grapes

It is one of the oldest fruits in existence, yet the demand seems to grow every year beyond all expectations. There is in the grape the good savory qualities that make it popular for eating as fresh fruit, and the uses to which it can be put in canning and jelly making are almost without number. Also, the best of the rich wines are pressed from grapes.

Grapes can be grown by any one who has a garden or yard, and a little time to give to it.

Care and Pruning. Grapes should be planted deeply, from 6 to 8 feet apart, south slope where possible. Annual and careful pruning is essential to the production of good grapes. If the roots are called upon to support too much wood, they cannot bring to maturity a fine crop of fruit. This yearly pruning should be done from November to March, while the vines are entirely dormant and before the sap starts.

Black Grapes

CONCORD. One of the most popular and reliable varieties we grow; bunch large, compact; berry large, round, almost black with blue bloom; juicy and very sweet. 1 yr. plants, 10 for 75c; 100 for \$5.50; 200 or more at \$5.00 per 100. 2 yr. select, very heavy roots, 15c each; 10 for \$1.00; 100 for \$8.00; 200 or more at \$7.50 per 100. If desired by parcel post, add 10c to the 10 rate and 25c to the 100 rate, to cover cost of packing and postage.

MOORE'S EARLY. A large grape of fine quality; ripens about two weeks earlier than the Concord; good grower; makes a good yield; very valuable as an early Grape. Select No. 1, two-year plants: 20c each; 10 for \$1.50; 100 for \$13.50. If desired by parcel post, add 10c to the 10 rate, 25c to the 100 rate.

WORDEN. Seedling of the Concord, which it greatly resembles in appearance, but the berries are larger, and the flavor generally considered better. The fruit ripens several days earlier. Select, No. 1, 2-yr. plants, 20c each; 10 for \$1.50; 100 for \$13.50. If desired by parcel post, add 10c to the 10 rate, 25c to the 100 rate.

BETA. Small berries produced in large sized bunches, and the best grape of them all for the cold climate. The Beta Grape does well even in North Dakota, often making a growth of 15 to 20 feet. It is a cross between a northern seedling Grape and a wild Grape, from whence it derives its hardiness. Quality good, and cannot be beaten for jellies and wines. Vines are unusually attractive and are used to great extent for arbors. Fruit is dark blue in color. Select, No. 1, 2-yr. plants, 10 for \$2.00; 100 for \$18.00. If desired by parcel post, add 10c to the 10 rate, 25c to the 100 rate, to cover the cost of packing and postage.

Red Grapes

Strong, select, 2-yr. plants, 35c each; 10 for \$2.50; 100 for \$18.00. If desired by parcel post, add 10c to the 10 rate, 25c to the 100 rate.

AGAWAM. Bunch large; berry large and round, reddish brown in color; tender, juicy and of excellent flavor. Very vigorous and productive. Vine hardy.

DELAWARE. One of the best of the red Grapes; bunch small and compact. Berry small and round, of a light red color. Flesh tender and juicy, exceedingly rich and sweet. An excellent table Grape and commands high market prices.

White Grapes

Strong, select, 2-yr. plants, 35c each; 10 for \$2.50; 100 for \$18.00. If desired by parcel post, add 10c to the 10 rate, 25c to 100 rate.

NIAGARA. The hardiest white Grape grown. Bunches large with good sized berries; pale yellow in color. Flavor sweet and pleasant. Skin thin, but rather tough.

Garden Roots ASPARAGUS

Planting Directions. They can be planted successfully either in Fall or Spring. See distance apart to plant given on page 9. Dig a narrow trench from eight to ten inches deep; fill the bottom with a thick layer of well rotted manure, which should then be covered with two inches of black surface soil. In this plant the Asparagus, leaving the trench open till the plants grow out. Fill the trench with manure in the Fall, which should be removed the following Spring. Keep weeds out. Do not start cutting until the second or third year for best results.

PALMETTO. An earlier and better yielder than other varieties. Has large, green shoots, often one to two inches in diameter; very tender and fine flavored. It is becoming the favorite everywhere. 2-yr. roots, extra good, 25 for 100; 100 for \$2.50; 1,000 for \$15.00. If desired by parcel post, add 10c for 25, 15c for 100, or 80c for 1,000 roots.

RHUBARB (Pieplant)

LINNAEUS. Early, very tender, and has a mild sub-acid flavor, not stringy or tough. The plant is large, and for pies or other culinary purposes, it is the housewife's favorite. 15c each; 10 for \$1.00; 100 for \$6.00. If desired by parcel post, add 5c each, 15c for 10 or 35c per 100.

HORSERADISH

That earliest-in-the-spring fresh relish. Compare the freshly grated with the already prepared, and you will have a little space in your garden for your own plants. In planting Horseradish, fit the soil the same as for strawberries, and plant the cuttings point downwards, with the top of the cutting about one inch below the surface of the soil. Cultivate the same as any garden crop. In about two weeks the leaves will show above the surface. 20c each; 10 for \$1.25. If desired by parcel post, add 10c to the 10 rate.



Concord Grapes.



Palmetto Asparagus.



Linnaeus Rhubarb.

Hardy Roses The Pet of the Flower Garden and Loved All the World Over

Long before history began the Rose was loved, as now, for its beauty and fragrance. No home is truly a home without at least a few of these charming plants. Our Roses are strong plants, grown out-of-doors, well rooted and in every way desirable. They give best results in rich soil where they will get plenty of sunshine. All Roses in this climate are benefited by being laid down and covered in Winter. To counteract any damage to the leaves by worms or spiders, use a strong tea from tobacco leaves. Plant a few of our extra strong, field-grown roses. They are all two-year-old, extra well rooted, and must not be confused with the tender, one-year greenhouse cuttings put out by most seed houses.

(If Roses are desired by parcel post, add 5c each to cover packing and postage.)

Rambler and Climbing Roses

For the trellis, porch or arbor, the Climbing Roses produce a most wonderful covering of delicate foliage and delightful flowers. They are all very hardy and require little Winter protection. If they grow too rank, give them a severe pruning, which will increase the amount of bloom.

CRIMSON RAMBLER. Nothing equals this as an all-around hardy garden Rose, on account of its brilliant color, profusion of bloom and length of time the flowers last. It may be used as a climber, or can be grown in large bush form. It blooms in large clusters of 50 to 100 flowers, covering the foliage its entire length with a solid mass of the most beautiful, perfectly shaped miniature crimson blossoms. Blooms last of June. 2-yr.-old, strong plants, 35c each; 3 for \$1.00; 10 or more at 30c each.

DOROTHY PERKINS. This is a splendid shell-pink climbing Rose. It is of the same strong habit as the Crimson Rambler and the flowers are borne in clusters of thirty and forty and sometimes fifty or sixty. The flowers are large for a Rose of this class, very double and sweetly scented. One of the most delightful spots we have ever seen was a Summer cottage completely covered with the Dorothy Perkins Rose. Strong, field-grown, 2-yr.-old plants, 35c each; 3 for \$1.00; 10 or more at 30c each.

WHITE PERKINS. Closely resembles its parent, the Dorothy Perkins, except that it has pure white flowers. Two-year-old, strong plants, 35c each; 3 for \$1.00; 10 or more at 30c each.

EXCELSA. (Red Dorothy Perkins). Fine crimson scarlet. Flowers are borne in large clusters. Vigorous grower, good healthy foliage; one of the best climbing Roses. Extra strong, 2-yr.-old plants, 35c each; 3 for \$1.00; 10 or more at 30c each.

PRAIRIE QUEEN. Bright rosy-red, large compact and globular flowers; blooms in clusters; good strong grower. Select, 2-yr.-old plants, 35c each; 3 for \$1.00; 10 or more at 30c each.

WHITE RAMBLER. The companion plant of the Crimson Rambler, which it very much resembles except that the miniature flowers are white instead of red. Field-grown, 2-yr. plants, 35c each; 3 for \$1.00; 10 or more at 30c each.

SEVEN SISTERS. Fine, free bloomer, bright scarlet. One of the best old-fashioned sorts. Flowers in clusters. Field-grown, 2-yr.-plants, 35c each; 3 for \$1.00; 10 or more at 30c each.

Rose of Fairfield.



Paul's Scarlet Climber.

TAUSENDSCHOEN (Thousand Beauties). A very profuse bloomer, beginning in June and continuing until the last of July. A lovely shade of soft pink when opening, changing to carmine later. Blooms in clusters and shows different shades at the same time, the older blooms of a deep pink shading to the light shell pink of the newest buds, which characteristic gave it its name of Thousand Beauties. A strong and vigorous grower. Field-grown, 2-yr. plants, 35c each; 3 for \$1.00; 10 or more at 30c each.

BALTIMORE BELLE. An old favorite, with dark green leaves, and a multitude of light-blush flowers, almost white. Strong plants, 2-yr.-old, 35c each; 3 for \$1.00; 10 or more at 30c each.

Select Climbers

The Two Finest Ever Produced.

ROSE OF FAIRFIELD. An unusual new climbing rose of striking features. A rich shade of red, a trifle darker than the Crimson Rambler, with the perfect shaped, double, miniature blossoms borne in large clusters in the same manner. Contrary to all other Climbers, however, as the plant puts on new growth, each new shoot is covered with new clusters of buds, making a delightful continuation of bloom from June until Fall. As the growing season advances, the new shoots and gay blossoms increase in size and brilliancy. A truly "Everblooming Crimson Rambler." Strong, field-grown, 2-yr. plants, 40c each; 3 for \$1.10.

PAUL'S SCARLET CLIMBER. Called by most growers the "Reddest Rose that Grows," and is by far the finest Climbing Rose in existence. It verifies its name in its intense scarlet colorings, never fading out in the hot rays of the sun, as other Ramblers do, but holding the vivid brilliant red from the first peep of the bud until the petals fall. Blossoms are nearly once again as large as the Crimson Rambler, semi-double, and stand on the bush in good condition for an unusually long time. Hardy and a very vigorous grower. No other Rose will give the same effect, and it is essential in every modern garden. Strong, field-grown, 2-yr.-old plants, 50c each; 3 for \$1.40. Select, heavy, 3-yr. transplants, 60c each; 3 for \$1.65.

Garden Roses

Old-fashioned, bushy sorts, that still hold their popularity on account of their abundant blooms and hardiness. A light covering of straw or manure in late Fall will give them all the Winter protection needed.

MADAME PLANTIER. This is by far the best hardy white Rose grown, although it blooms but once a year and that in June. We have at our nursery a Madame Plantier Rose bush that is over 30 years old, and still blooming profusely each season. Fine for cemetery and landscape planting, having large clusters of beautiful good sized, creamy white flowers. Heavy, 2-yr. plants, 35c each; 3 for \$1.00.

PERSIAN YELLOW. Rather scarce, but very much in demand. A beautiful shade of rich yellow; a very profuse bloomer; flowers are rather small. One of the best yellow Roses ever produced. Select, 2-yr.-old plants, 60c each; 3 for \$1.50.

Hybrid Perpetual Roses

Delightful for the border or Rose garden, with blossoms of brilliant colors that are borne in profusion at intervals throughout the Summer, giving them the name of "Perpetual" or "Monthly" Roses. Should be trimmed back quite severely when planted, and also every succeeding Spring for more numerous blooms. Before the ground freezes in the Fall, mound the earth 8 to 12 inches up around the plant, over the mound placing a loose covering of straw or light manure, which should be removed after the ground opens up in the Spring. You will have no trouble in wintering even the more frail varieties if treated in this manner.

GENERAL JACQUEMINOT.

This might be called the Rose for the millions, for it is still a universal favorite. The fragrant, perfectly formed blossoms come early, are brilliant scarlet-crimson, and borne on long stems. Vigorous, hardy plant. Strong, field-grown, 2-yr. plants, 50c each; 3 for \$1.40; 10 for \$4.35.

ULRICH BRUNNER. A very vigorous and hardy perpetual Rose, with large, perfectly formed blossoms, light red in color. Always use generously in Rose plantings, as it is one of the best. Very fragrant. Strong, field-grown, 2-yr. plants, 50c each; 3 for \$1.40; 10 for \$4.35.

FRAU KARL DRUSCHKI. An extremely popular Rose, on account of its very large size, pure white flowers and perfect form. Free and perpetual bloomer and vigorous in its growth. Strong, field-grown, 2-yr. plants, 50c each; 3 for \$1.40; 10 for \$4.35.

PAUL NEYRON. Deep rose color; good foliage; by far the largest variety in cultivation; one of the best. Strong, field-grown, 2-yr. plants, 50c each; 3 for \$1.40; 10 for \$4.35.

MAGNA CHARTA. An old favorite. Very beautiful, and admired especially for its color, which is a handsome bright pink with splashes of carmine. Large, rather globular shaped flowers; plant a profuse bloomer. Strong, field-grown, 2-yr. plants, 50c each; 3 for \$1.40; 10 for \$4.35.

PRINCE CAMILLE de ROHAN. Very dark, velvety crimson; large, moderately full, exquisitely formed blossoms. Handsome, and one of the very best dark Roses. Strong, field-grown, 2-yr. plants, 50c each; 3 for \$1.40; 10 for \$4.35.

J. B. CLARK. Intense, deep scarlet blooms, shading to a rich maroon. Immense in size; quite fragrant. A strong, vigorous grower, and one of the finest scarlets. Strong, field-grown, 2-yr. plants, 50c each; 3 for \$1.40; 10 for \$4.35.

CLIO. A delightful pink Rose, large, and a perfect cup-shaped when the bud is about two-thirds open. Fragrant. The lovely flesh color deepens to pink in the center. Foliage a beautiful background to this exquisite Rose. Strong, field-grown, 2-yr. plants, 50c each; 3 for \$1.40; 10 for \$4.35.



Paul Neyron Rose.

Hybrid Tea Roses

The Tea Roses are perhaps not quite as hardy as the Perpetuals, yet by wintering carefully, the same as the Perpetuals they show remarkable vigor, and we have had fine reports on them from even northern parts. There are delicate colorings and delightful fragrance to be found in the Hybrid Teas not produced to such a high degree in any other class. They are even more profuse bloomers than the Perpetuals, and like them the Tea Roses bloom at intervals throughout the Summer, coming under the class of "Monthly Roses." Fertilize freely.

LA FRANCE. A Hybrid Tea Rose, blooming almost constantly during the Summer. Its delicate coloring cannot be surpassed—a delicate silvery rose changing to silvery pink, and with its deliciously sweet fragrance ranks among the foremost of all Roses. Buds are long pointed, borne on long stems. Strong, field-grown, 2-yr.-old, 75c each; 3 for \$2.15; 10 for \$6.50.

GRUSS AN TEPLITZ. A brilliant crimson Rose changing to a fiery red. One of the freest bloomers of them all and hardy. Every Rose lover should have one in his garden. Strong, field-grown, 2-yr.-old, 75c each; 3 for \$2.15; 10 for \$6.50.

OPHELIA. A delicate salmon-flesh color with touches of rose makes this one of the most delightful Roses of them all. Very popular. Strong, field-grown, 2-yr.-old, 75c each; 3 for \$2.15; 10 for \$6.50.

SUNBURST. Bright, glowing orange blooms, paling slightly at edges of petals, producing a delightful imitation of a real sunburst. Remarkably beautiful and one of the finest Teas. Strong, field-grown, 2-yr.-old, 75c each; 3 for \$2.15; 10 for \$6.50.

Baby Ramblers

Exquisite, fragrant Roses, with the delicate coloring of the Tea Rose, and exceedingly popular. They are dwarf, ever-blooming plants, ordinarily blooming from May until frost. Then, if potted in the Fall and allowed to rest in the cellar for a month they will make beautiful potted plants for your home during the Winter months. Very hardy, and one of the finest Roses for any home. We can furnish in the following varieties:

CATHERINE ZEIMET. Pure white; very free bloomer. 2-yr. plants, No. 1, 65c each; 3 for \$1.75.

ELLEN POULSON. A deep, warm pink. 2-yr. plants, No. 1, 65c each; 3 for \$1.75.

ERNA TESCHENDORFF. Large, double blossoms of an intense crimson. 2-yr. plants, No. 1, 65c each; 3 for \$1.75.



Frau Karl Druschki Rose.

Magna Charta Rose.

Lady Hillingdon Rose.

Rose Specialties

MRS. AARON WARD. On account of its quaint coloring, few Roses enjoy such popularity as does this remarkable variety. In no other Rose will you find such a rich golden-orange gradually shading outward to a salmon-yellow, with sometimes a hint of Rose—see picture on the outside back cover. Buds are beautifully formed, cup-shaped, semi-double. Because of the great demand for this exquisite Rose it has become quite scarce. Rose lovers are bound to want the Ward Rose in their garden collection, but it will be necessary for them to order at once as our supply is very limited. While they last we can offer them to our customers, in strong, field-grown plants, 2-yr.-old, at \$1.00 each.

BRITISH QUEEN. A beautiful white Rose, often faintly blushed in the bud but opening up to creamy white. Flowers are very large—bud long and pointed. Everyone wants at least one beautiful, large, everblooming white Rose in their collection, and although this variety is scarce, we cannot recommend it too highly for its perfect form and color. **Special Offer, on our strong, field-grown, 2-yr. plants, \$1.00 each.**

PREMIER. One of the finest of the new everblooming Teas. It is a seedling of the Ophelia and Russell Roses, having the general characteristics of the American Beauty. Throughout the blooming period it holds a rich shade of rose-pink, shading to a deep rose toward the center. Lovely both in the bud and open flower, it has become one of the very choice Roses. Delightfully fragrant. **Special offer to Ferris customers, on our strong, field-grown, 2-yr. plants, \$1.00 each.**

LADY HILLINGDON. An exquisite Hybrid Tea Rose, with long pointed buds. Blossoms open up very double, and are of a beautiful, deep, apricot-yellow. A good bloomer—in fact, a fine rose in every way, and the pride of every Rose gardener. Yellow Roses are always scarce, but while they last we are offering Lady Hillingdon to our customers at the Special Low Price of \$1.00 each.

FERRIS' SHRUBS OFTEN BLOOM THE YEAR PLANTED AND OUR HANSEN'S PLUMS START BEARING WHEN VERY YOUNG.

Racine, Wisconsin.
Oct. 8, 1924.

Dear Sirs:

Am pleased to report a perfect stand of the shrubs we ordered from you last Spring. Out of over forty Spireas, Snowberries and Barberries, not one died, and all made a wonderful growth. The Snowberries and Spireas bloomed, and we have one Spirea Van Houttei in bloom at the present time, blooming for the second time this season. Also one Opatia Plum tree bloomed heavily.

Very truly yours,
GEO. S. MERCHEK.



Rugosa Roses, Conrad F. Meyer.

Rosa rugosa

Japanese and Chinese shrub-roses, and extremely hardy. They originated in a cold, severe climate, and because of their hardiness are adaptable to all sections of the United States.

They are certainly a pleasing and desirable addition to any garden, their foliage is fine, somewhat wrinkled and waxy, and unusually free from disease; the flowers are extremely numerous, brilliant in coloring, delicate in formation, opening up in June and often at intervals from then on until Fall. At maturity they reach a height of from 4 to 8 ft., and following the flowers the plant produces brilliant seed-pods or "hips" which hang on nearly all Winter.

They need no Winter protection, are fine for hedges, in a border planting with shrubs or other Roses. They deserve wider planting and are bound to become more popular. We can furnish the Rosa rugosa in the following varieties:

SIR THOMAS LIPTON. Clusters of medium-sized, double, snow-white blossoms. **Strong, field-grown plants, 65c each; 3 for \$1.80; 10 for \$5.50.**

CONRAD F. MEYER. Very large, double, showy, clear silvery rose flowers; very fragrant. One of the taller growing varieties and very beautiful. **Strong, field-grown plants, 65c each; 3 for \$1.80; 10 for \$5.50.**

NEW CENTURY. Very double, flesh-pink blossoms with light red center, sometimes bordered with creamy white. A lower growing variety. **Strong, field-grown plants, 65c each; 3 for \$1.80; 10 for \$5.50.**

HANSA. An excellent Rugosa, with large, double, full blossoms of deep red. A vigorous grower and a profuse bloomer. **Strong, field-grown plants, 75c each; 3 for \$1.95; 10 for \$6.00.**

Dahlias

Flowers of beautiful, showy colors that reach their perfection in late Fall, and for this reason are essential in every garden, after other varieties have faded and gone. We can furnish them in a delightful mixed assortment, containing all the most beautiful colors, such as red, yellow, pink, white, etc., and the bulbs are extra good. These bulbs should always be dug in the Fall before the ground freezes and stored in an ordinary cellar where they will not freeze. **MIXED ASSORTMENT, 12 for \$1.00; 25 for \$1.75. If desired by parcel post, add 25c for 12 bulbs; 40c for 25 bulbs.**

FERRIS' ROSES ARE BLOOMING IN ALL PARTS OF THE UNITED STATES.

Bronson, Mich., Oct. 6, 1924.

Dear Sirs:

Referring to the nursery stock purchased from you last Spring, I wish to advise that the Roses I received from you have grown wonderfully this Summer, and every one is alive and still in bloom. I refer to the Ideal Rose Collection I received from you last Spring.

P. G. FINISY.



Dahlias—From my Mixed Collection.

Gladioli

Just whisper the word "Gladioli" and every lover of flowers can talk. Known far and wide, they are admired by everyone for their magnificent flowers.

To obtain a succession of bloom, they should be planted every two weeks, from the first of April to the beginning of June. They will then produce a succession of bloom from July until November. Plant in good, dry, sandy loam. Dig the row or bed from eight to ten inches deep, then rake it thoroughly before planting your bulbs; if stable dressing is used, it should be spaded in when the bed is first dug over. Heat dressing can be used, giving first class results if applied properly, but it must be put in at the bottom of drill or bed, then covered with fully an inch of soil before the bulbs are planted. Cover bulbs 4 to 6 inches deep, as soon as they show their heads through the ground they should be cultivated. Cultivate once a week.

In Autumn, when the leaves turn yellow, the bulb is sufficiently ripe to take up. They should be sun-dried for a day after removing from the ground, then put in a dry cellar and kept from frost. All of our Gladiolus Bulbs are strong, blooming size. We guarantee them to bloom the first year.

FERRIS SPECIAL ADVERTISING BARGAIN, PRIMULINUS HYBRID GLADIOLI

A beautiful new type of Gladiolus, with dainty flowers on tall graceful spikes that are particularly adapted for cutting. Colors run in beautiful shades from tan and light yellow to orange and apricot. Vigorous, showy and attractive.

SPECIAL ADVERTISING PRICE: 50 good, 2-yr. blooming size bulbs, only \$1.00, parcel post prepaid.

SPECIAL ADVERTISING PRICE: 100 small, but blooming size bulbs of the above Hybrid Mixture, for only \$1.00, parcel post prepaid.

FERRIS' SELECT RAINBOW GLADIOLUS COLLECTION

In this mixed collection we have some of the finest and choicest of the Gladioli—varieties that in named collections are selling the country over at the very highest prices. There is a great riot of colors, from the lightest, faintest tints, to all of the deep rich colors.

WHILE THEY LAST, This Rainbow Collection will go at the following bargain rates: 12 for 50c; 25 for 80c; 50 for \$1.50. If desired by parcel post, add 5c for 12, 8c for 25 and 15c for 50 bulbs.

FERRIS' IDEAL GLADIOLUS COLLECTION FOR THE HOME GARDEN

- | | |
|---------------------|----------------------|
| 10 Le Marechal Foch | 10 Mrs. Francis King |
| 10 Helen Franklin | 10 Cracker Jack |
| 10 Gretchen Zang | 10 Schwaben |

60 BULBS, Regular catalog price.....\$3.10.
SPECIAL BARGAIN OFFER.....\$2.75.

(If desired by parcel post, add 15c for packing and postage.)

Ferris Extra Choice Named Gladioli

(If desired by parcel post, add 5c for 25, and 15c for 50 bulbs, to cover cost of packing and postage.)

WHITE

HELEN FRANKLIN. That lovely, ruffled white Gladiolus, with violet markings on the lower petals. Vigorous, tall spikes with from 6 to 10 large flowers open at one time. 10c each; 10 for 75c.

BERTREX. Wonderful pure white flowers. Very choice. 10c each; 10 for 75c.

CHICAGO WHITE. An early white Gladiolus, pure white with delicate lavender markings on lower petals. Tall, straight, vigorous stems. 10c each; 10 for 75c.

BLUE AND LAVENDER

MARY FENNEL. Exquisite pinkish lavender flower on tall spike. Soft primrose-yellow throat. 15c each; 10 for \$1.00.

BARON HULOT. The leading purple variety. A rich, deep violet-purple, very dark on petal tips, with a tiny fleck of yellow in throat. 20c each; 10 for \$1.25.

HERADA. One of the finest of all new Gladioli, being extremely large and of a wonderful color. Blooms are of a glistening, clear lilac, or mauve, with deep markings in the throat. 25c each; 10 for \$2.00.

ANNA EBERIUS. A rich velvety purple, throat shading deeper. Wide open flowers on strong spike. 20c each; 10 for \$1.25.

PINK

LE MARECHAL FOCH. Extra large flowers of an exquisite, delicate pink. Very early, one of the most valuable for cut flowers. 15c each; 10 for 50c.

GRETCHEN ZANG. A most beautiful soft pink, blending into bright scarlet on the lower petals. Very lovely. 15c each; 10 for 50c.

PRINCE OF WALES. Large flowers of a most charming coral-pink. One of the most beautiful of new, rare Gladioli. 20c each; 10 for \$1.00.

MRS. FRANK PENDLETON. A truly spectacular Gladiolus, and a favorite as a cut flower. Lovely light pink, with a rich maroon blotch on lower petals. Very large flowers on tall, straight stalks. 15c each; 10 for 50c.

HALLEY. One of the most attractive of the early bloomers. Large, well-opened flowers of delicate salmon-pink, with creamy blotch on lower petals and a narrow stripe of bright red through center. 15c each; 10 for 50c.

AMERICA. A lovely soft pink, with touches of lavender, resembling the orchid in make-up and coloring. Fine for cutting. 5c each; 10 for 45c.

PANAMA. A seedling of the America, and many consider it even finer. Very large, strong spike of beautiful pink flowers. 10c each; 10 for 75c.

EVELYN KIRTLAND. A distinct pink variety, with its beautiful rosy pink colorings, darker at the edges, fading to shell-pink at center, with brilliant scarlet blotches on lower petals. 10c each; 10 for 75c.

ROSELLA. An immense Gladiolus, light rose in color with white throat. One of the best and most beautiful. 15c each; 10 for 75c.



Panama Gladiolus.

YELLOW

GOLDEN KING. A brilliant golden yellow, with intense crimson blotch in throat, giving a very striking effect. Flowers large and well opened. 20c each; 10 for \$1.25.

SCHWABEN. The finest canary-yellow Gladiolus. Borne on extra large stalks, with immense flowers of clear yellow, shading to sulphur. 15c each; 10 for 50c.

PRINCE HENRY. A lovely yellow, with splashes of orange-salmon. Tall, graceful stems, flowers medium sized. 5c each; 10 for 40c.

SCARLET AND RED

BLACKHAWK. One of the most beautiful red Gladioli ever produced. Color a rich, deep red, shading to black in the center. Flower large. Fine for cutting, or for the flower garden. 20c each; 10 for \$1.00.

CRACKER JACK. An old-time favorite. Dark, rich maroon, with darker maroon and yellow markings on the lower petals. 5c each; 10 for 40c.

MICHIGAN. Good sized salmon-scarlet flowers on long straight spikes. Very striking, and one of the most profuse bloomers of them all. 20c each; 10 for \$1.25.

MRS. FRANCIS KING. One of the most glorious of all Gladioli. Immense flowers borne on giant size spikes, often 18 to 20 flowers on a single spike. A brilliant scarlet-salmon, lower petals touched with carmine. 5c each; 10 for 45c.

SUMMER. A rich magenta red with light center. Very artistic. 10c each; 10 for 75c.

SCARLET VELVET. A lovely, dark velvety-scarlet. 10c each; 10 for 75c.



Helen Franklin Gladiolus.

Peonies—"The Best Loved Flowers of the Springtime Garden"

The gorgeous, bomb-shaped flowers of brilliant hues borne on long stems, which make them of infinite value either for cut flowers or when left uncut, the extreme hardiness of the plant and ready ease in adapting itself to any climate or condition, its vigorous, healthy growth, its waxy, artistic green leaves which Mother Nature has so consistently made to enhance the loveliness of the blossoms—all these meritorious features and more unite in making the Peony a favorite the world over.

The old-fashioned common "pneys" in our grandmother's garden can still be furnished in the common red, white and pink colors, but these have been eclipsed by the wonderfully improved sorts introduced in recent years. They are the "Queen of the Spring Flowers," valuable for planting in groups, through the perennials or in the shrubbery borders. No other flower is so well adapted for large, showy bouquets; their brilliant colors will make a dark corner bright and a gloomy heart happy. You will find something lacking if you do not have three or more Peonies in your home planting.

Any good, rich, growing soil is excellent for Peonies, and they give best results in an open, sunny situation. See that they get plenty of moisture during the growing and blooming seasons. They are well adapted to the climate of our most northern states. Cultivate and keep free from weeds for the finest, largest blossoms.

Don't be disappointed if the blooms the first year after planting are not up to expectations. Many of the finest double varieties will bloom single or semi-double the first year and will not always attain full perfection until the third year after transplanting.

(IF PEONIES ARE DESIRED BY PARCEL POST, ADD 5c EACH FOR PACKING AND POSTAGE.)

HUMEI. A large, very double, compact, globe-shaped peony, cherry-pink in color. Delightful cinnamon fragrance; very late bloomer. A new and choice bright pink variety. \$1.00 each.

FRENCH ORTEGAT. Semi-double variety, strikingly beautiful with its dark, rich red blossoms, and with stamens artistically scattered among the petals. Mid-season. A favorite among the newer varieties, and one of the finest deep red Peonies ever introduced. 75c each.

LOUIS VAN HOUTTE. Brilliant crimson. One of the finest fiery red Peonies, with exquisite fragrance. Semi-double type. One that is desirable for every collection. 85c each.

MARIE LEMOINE. Large, very compact, double Peony, pure white shading to cream in center, with now and then a scarlet tip. Fragrant and a late bloomer. A beautiful and desirable white. \$1.00 each.

AGIDA. Bright red, gay and showy; very free flowering. Mid-season. 85c each.

FULGIDA. Bright magenta red. Semi-double; free bloomer. Rather late. 85c each.

FESTIVA MAXIMA. Enormous, very full shell-formed. Bloom is often seven to eight inches in diameter on strong 3 1/2 foot stems; color snow white, shading to delicate creamy white at base of petals, with an occasional clear red tip on center petals. Very fragrant. The most popular white Peony for cut flowers. 60c each.

ROSE FRAGRANS. Large double blossoms, bomb-shaped, of a beautiful American Beauty red; exquisite fragrance. 60c each.

FERRIS' SHIPMENTS ARE PACKED SO THAT THEY CAN GO TO ALL SECTIONS OF AMERICA IN FINE CONDITION.

Laureldale, Pa. Oct. 2, 1924.

Dear Sir:

Am writing this letter to tell you of the nursery stock I received in my Spring order. Everything I sent for came to me way back here in Pennsylvania in perfect condition, and every tree and bush grew lovely. I got two Catalpa trees and I was really surprised to see how quickly they rooted and became adapted to the new soil.

Yours truly
AMANDA HARTMAN.

UNNAMED PEONIES. We have some extra good pink, red and white Peonies that are unnamed. These are some of the high priced varieties, but in some way the names have been lost from the stakes and we have only the markings according to color. While they last, you may have them at 50c each.



(1) Marie Lemoine. (2) Humei. (3) Louis Van Houtte. Here are three of the finest Peonies ever grown, worth all of \$3.00. While they last, we are offering one of each in a Special Bargain Collection—the three for only \$2.70, postpaid.

Pink—Phlox Pantheon.
White—H. O. Wijers.
Red—R. P. Struthers.

Ferris' Wonderful, Gay-Colored Phlox, Last
All Summer While Other Flowers
Come and Go.



Hardy Herbaceous Perennials

Fulfil your heart's desire by planting that border of vivid Phlox along the curve of your shrubbery plants or informally in your flower garden. The Iris loves to be admired, and where will it be more content than shooting up along the entrance walk or drive, or clumped in the flower border. There is real luxury in having your own cut flowers through the Summer, and Ferris' Perennials pave the way. Perennials can be used to best advantage in groups and beds on the lawn, as borders for drives, walks, or in front of shrubbery. Most of them can be planted in the Spring or Fall. Plant in good rich ground, and as a rule the crowns on a level with the ground. A covering of straw or leaves over the perennial bed in Winter is beneficial. Soil should be kept well fertilized.

Phlox

For border planting, there is nothing to equal the Phlox. Their brilliant blossoms are borne in great profusion and retain their superb colorings for some time, giving color and finish to a mass planting of shrubs, and brightening up the gullest places. They are so well known that they need little description. We can furnish either in extra good mixed collections, or the finest named varieties given below.

Mixed Lots: 20c each; 6 for \$1.00; 12 for \$1.75.
Named Varieties: 25c each; 6 for \$1.25; 12 for \$2.40.
If desired by parcel post, add 10c for 6, 15c for 12 Phlox, to cover cost of packing and postage.

RYNSTROM. Very large flowers, and a lovely shade of rose pink.

CHAMPS ELYSEES. Bright, rosy red. Very desirable.
ECLAIREUR. Bright rose-carmine with a hint of purple. An extremely long bloomer, lasting way into the Fall.

MRS. JENKINS. Large, pure white flowers. An early and free bloomer.

RHEINLANDER. A beautiful salmon-pink with deep red eye. Immense flowers.

R. P. STRUTHERS. Cherry-red, suffused salmon. Considered by many as the finest of the red Phlox.

H. O. WIJERS. White with red eye.

DOUBLE XX. A choice new Phlox, pinkish lavender. Delicate and lovely.

German Iris

The "Fleur de Lis" of France, and well-beloved favorite in every old-time garden. Although capable of establishment in every kind of soil, they attain greater perfection of growth and flowering in a damp or marshy situation. Their exquisite colorings and the artistic growth of both plant and flower make them desirable in every garden. In groups along paths and walks or as a border they are excellent, and their delightful fragrance adds a great deal to their charm.

If desired by parcel post, add 5c for one, 15c for 10
Iris, to cover cost of packing and postage.
Mixed Lots: 15c each; 10 for \$1.00.
Named Varieties: 35c each; 10 for \$2.50.



(1) Pallida Dalmatica.

(2) Madame Chereau.

(3) Queen of May.

Three of the new select and costly Iris—Aren't they lovely? We have a wonderful lot of them, and are glad to offer them to our customers in the following special collections:

2 each of these three choice varieties—the 6 roots for only \$1.50, postpaid.
4 each of these three choice varieties—the 12 roots for only \$2.75, postpaid.

IRIS—Continued

- GERTRUDE. A lovely, soft azure-blue. Medium stems.
- HONORABLE. Standards golden, falls rich mahogany-brown. Medium height.
- FAIRY. White, suffused with light blue. Beautiful.
- PALLIDA DALMATICA. Light lavender, shading to deep lavender. Tall stems, and one of the best.
- QUEEN OF MAY. A charming shade of rose-lilac, nearly pink. Tall stems and one of the rarer sorts.
- DARIUS. Standards a vivid yellow; falls lilac, margined white, rich orange beard. A favorite.
- MADAME CHEREAU. Tall stems; flower white, distinctly filled with a wide border of clear blue.
- FLAVESCENS. A fine soft yellow Iris, sweetly scented. Tall.
- VIOLACEA GRANDIFLORA. A rich violet-blue, almost purple. Rare.



Yucca.

Yucca

A perennial distinctive and beautiful. Its broad, sword-like foliage and tall-branched spikes of large, fragrant, drooping, creamy white flowers make it an effective plant for all positions. Will reach a height of from 5 to 6 ft. at maturity. One of the Yucca's charming qualities is the fact that the foliage stays green the year around, bringing it in the class of "Evergreen Plants." A most desirable plant for the Perennial Border. 2-yr., 25c each; 3 for 50c. If desired by parcel post, add 3c each.

Achillea

Often called "The Pearl," and a perennial that is desirable for every border and flower garden. Its clustered blossoms of pure white are innumerable, white foliage is fine and feathery. Excellent for cut flowers, they will last for two or three weeks. Blossom all Summer. 3-yr. roots, 25c each; 10 for \$1.75. If desired by parcel post add 5c each; or 15c for 10.



Achillea.

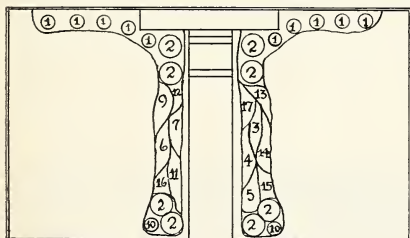
Golden Glow

Planted in clumps, the Golden Glow makes one of the finest of all perennials; strong, vigorous grower, producing beautiful double golden yellow flowers in greatest profusion. 50c each; 10 for \$3.00. If desired by parcel post, add 5c each, or 15c for 10.

Taylorsville, Ky., Sept. 30, 1924

Gentlemen: Am glad to state that all the trees I bought from you last Spring are living and look fine, also every Latham and Imogene Raspberry plant lived and I am so well pleased with your new Imogene berry that I would not take \$2.00 apiece now for each of the plants. I will want other plants of you in the Spring.

Yours truly,
LEE COCHRANE.



LANDSCAPE PLAN NO. 7.

Such a Glorious Planting of Ferris Shrubs and Perennials Will Gladden the Hearts of the Whole Neighborhood.

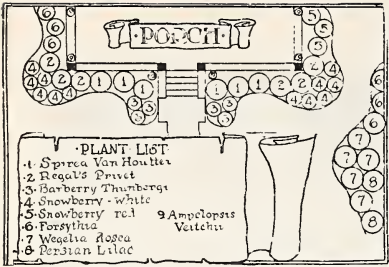
KEY TO PLANTING:

- (1) 10 Dwarf Deutzia, 3-yr.\$6.50
- (2) 8 Spirea Van Houttei, 3-yr. 4.00
- (3) 5 Iris—Gertrude 1.25
- (4) 8 Phlox—R. P. Struthers 1.60
- (5) 8 Achillea 1.60
- (6) 6 Iris—Madame Chereau 1.50
- (7) 6 Phlox—Eclairer 1.20
- (9) 2 Peonies—Louis Van Houtte 1.70
- (10) 2 Yucca35
- (11) 6 Achillea 1.20
- (12) 8 Phlox—H. O. Wijers 1.60
- (13) 3 Peonies, 1 Festiva Maxima60
- 2 Rosea Elegans 1.00
- (14) 5 Yucca85
- (15) 6 Phlox—Champs Elysees 1.20
- (16) 2 Iris—Darius50
- (17) 5 Iris—Pallida Dalmatica 1.25

Total\$27.90

MY SPECIAL INTRODUCTORY OFFER ON THIS WONDERFUL COLLECTION \$26.30

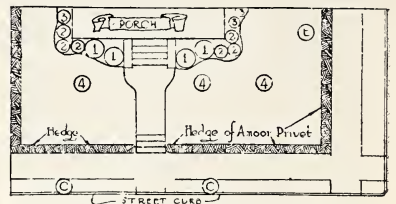




LANDSCAPE PLAN NO. 8

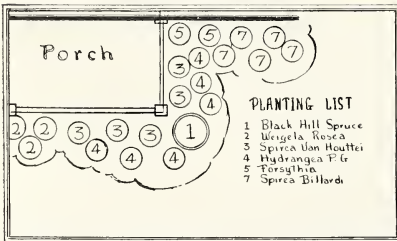
KEY TO PLANTING

	1-2 yr.	3-4 yr.
(1)	6 Spirea Van Houttei .. \$1.50	\$4.50
(2)	6 Regal's Privet, 18 in. .60	2 ft. 2.40
(3)	6 Barberry Thunbergi,	
	18-24 in. 3.00	2-3 ft. 4.20
(4)	12 White Snowberry .. 1.20	6.00
(5)	3 Red Snowberry .. .30	1.20
(6)	6 Forsythia .. .1.80	2.70
(7)	5 Weigela Rosea .. .3.50	4.50
(8)	2 Persian Lilac .. .1.50	2.00
(9)	6 Ampelopsis Veitchii	
	(Vines) large size only 3.00	3.00
Totals		\$16.40 \$30.50
Special Landscape Bargain		
Price		\$15.30 \$28.70



KEY AND PLANTING LIST

	1-2 yr.	3-4 yr.
(1)	4 Golden Elder	\$1.40 \$4.00
(2)	6 Spirea Van Houttei.	1.50 4.50
(3)	3 White Snowberry ..	.75 1.80
(4)	3 Tree Hydrangea	
	(One size only)	6.00 6.00
(E)	1 Elm Tree, 6-7 ft.75 10-12 ft. 1.50
(C)	2 Catalpa Bungei (2-	
	yr. heads)	4.00 4.00
(Hedge)	75 Amoor River	
	Privet, 18 in.	6.00 2 ft. 26.25
Totals		\$20.40 \$48.05
A Wonderful Ornamental		
Collection for Only ...		\$19.50 \$45.50

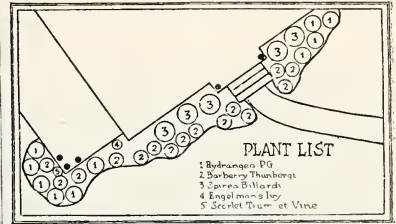


LANDSCAPE PLAN NO. 10

KEY TO PLANTING

	1-2 yr.	3-4 yr.
(1)	1 Black Hills Spruce,	
	2-3 ft.	\$1.25 3-3½ ft. \$1.50
(2)	3 Weigela Rosea .. .2.25	3.00
(3)	5 Spirea Van Houttei	1.25 3.75
(4)	6 Hydrangea P. G. .. 2.70	6.00
(5)	2 Forsythia .. .70	1.00
(7)	5 Spirea Billardi .. 1.75	2.25
Totals		\$9.90 \$17.50
A Lovely Porch Planting		
That Will Fit Almost		
Any Home, at My Special		
Low Bargain Price \$9.25		\$16.25

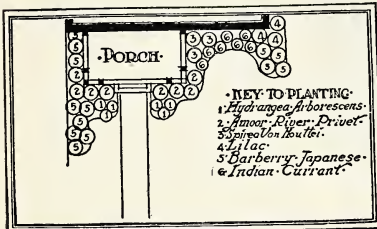




LANDSCAPE PLAN NO. 11

KEY TO PLANTING	1-2 yr.	3-4 yr.
(1) 10 Hydrangea P. G.	\$4.50	\$10.00
(2) 15 Barberry Thunbergi, 18-24 in.	7.50	10.50
(3) 5 Spirea Billardi	1.75	2.25
(4) 1 Engelmann's Ivy (Large size only)75	.75
(5) 1 Scarlet Trumpet Vine, (Large size only)75	.75
Totals	\$15.25	\$24.25

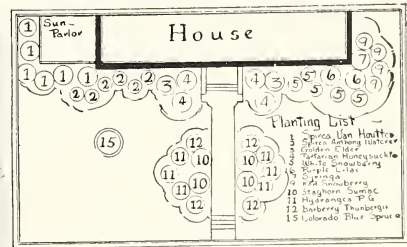
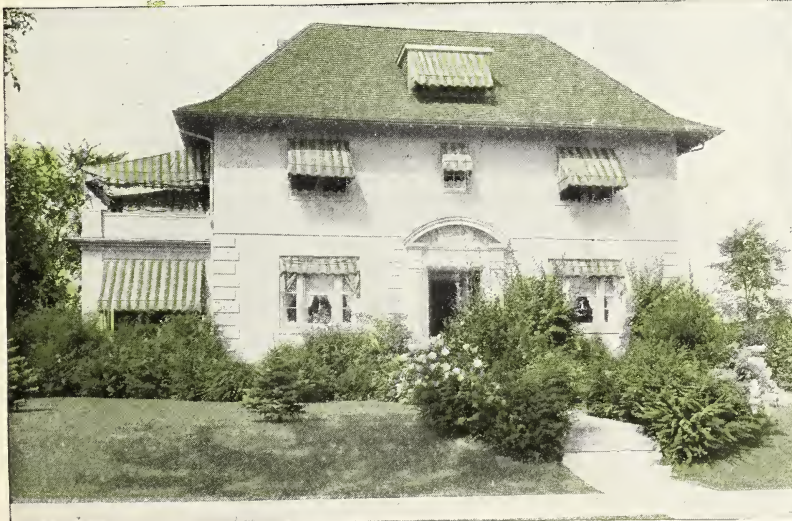
This Delightful Home Planting for Only\$14.50..\$22.75



LANDSCAPE PLAN NO. 12

KEY TO PLANTING	1-2 yr.	3-4 yr.
(1) 6 Hydrangea Arborescens	\$4.20	\$5.40
(2) 8 Amcor River Privet, 18 in.80	3.20
(3) 3 Spirea Van Houttei ..	1.05	3.00
(4) 3 Lilac	2.25	3.00
(5) 9 Barberry Thunbergi, 18-24 in.	4.50	6.30
(6) 7 Red Snowberry (Indian Currant)70	3.50
Totals	\$13.50	\$24.40

This Beautiful Landscape Planting Will Add Hundreds of Dollars to the Valuation of Your Property, and cost you only \$12.65 \$23.00



LANDSCAPE PLAN NO. 13.

KEY TO PLANTING	1-2 yr.	3-4 yr.
(1) 6 Spirea Van Houttei	\$1.50	\$4.50
(2) 6 Spirea An. Waterer.	2.40	4.80
(3) 2 Golden Elder70	2.00
(4) 4 Tart. Honeysuckle....	2.00	3.00
(5) 5 White Snowberry....	.50	2.50
(6) 2 Purple Lilac	1.50	2.00
(7) 1 Syringa (Mock Orange)	.35	.50
(8) 4 Red Snowberry.....	.40	2.00
(10) 4 Staghorn Sumac	3.00	4.00
(11) 6 Hydrangea P. G. ...	2.70	6.00
(12) 4 Barberry Thunbergi, 18-24 in.	2.40	2-3 ft. 4.00
(15) 1 Colo. Blue Spruce Shiner, 2-2½ ft. ..	4.00	3-4 ft. 8.00
Totals	\$21.45	\$43.30

My Special Cut-rate Landscape Offer\$20.50 \$41.50



Spirea Van Houttei.

Planting Directions. Shrubs are easily planted and require little care. Any good growing soil is excellent. Set the plants deeply and firmly, and trimming the tops back somewhat will insure a quicker and better growth. Keep them cultivated and free from weeds the first year, watering them in the evening during any dry spells. After the first year they will require little care other than any annual pruning you may wish to give them.

FORSYTHIA, Golden Bell. The first shrub to bloom in the Spring, and for this reason is desired in every home planting. These beautiful, bell-shaped flowers of a golden yellow color come out in great profusion and make a striking picture on the early Spring landscape. Foliage is a bright green, turning to a dull bronze shade in the Fall months.

No. 1, field grown	Each	10
	\$0.50	\$4.50

HYDRANGEA PANICULATA GRANDIFLORA. One of the most magnificent shrubs for landscape purposes of them all. Flowers are borne in large, globe-shaped panicles, white in color, becoming tinged with a delicate pink at the first frost and last for weeks after opening up. This plant is absolutely hardy, grows in any soil, and blooms the same year it is set out. Very attractive in beds or masses, and should be used for the most part in the foreground. You cannot do without them, for they come at a time when blooms are scarce—during September and October. When used in foreground work, they should be trimmed back severely every March. It is the new growth that blossoms, so this good trimming every year makes a more vigorous growth, flowers in greater abundance, and makes the plant much better in every way.

2-yr., strong, field grown	Each	10
Extra heavy specimens	\$0.50	\$4.50
	1.25	10.00

TREE HYDRANGEA P. G. The same as Hydrangea Paniculata Grandiflora, but grown on stems in dwarf tree form. At maturity they stand about five feet high. Most attractive and desirable, making a very picturesque specimen shrub for the lawn, and especially beautiful when covered with the immense panicles of bloom. With well-shaped heads, \$2.00 each.

HYDRANGEA ARBORESCENS (Hills of Snow). A variety of the Hydrangea deserving more attention. Immense pure white panicles of bloom, rather flat in shape, open in June and last until August when the Hydrangea P. G. start blooming. Foliage bright green, and very finely finished. This magnificent, hardy shrub should have a place around every home, and is especially desirable in mass planting.

3-yr., heavy, field-grown	Each	10
	\$1.00	\$9.00

Hardy Ornamental Shrubs

The All-American love for beauty in and around the home has led to an enormous demand for shrubs. It's not only "Mother" who wants that flowering hedge along the driveway or the mass of foliage and glorious bloom around the front porch. "Dad" has awakened, and is just as interested, and is anxious to acquire the finishing touches that Mother Nature can give to an Honest-to-goodness, 20th Century Home as the "women folks."

There is room and a place for trees on every home ground, but it is the shrubs that are on the level with the eye and accordingly are the most important feature of landscape planting. The selection of varieties depends somewhat on personal preferences, and the descriptions and photographs given in this section and throughout the catalogue should be helpful in this phase of the

work. Then, we would suggest your studying the various landscape plans in this catalogue, noting the general rules that are always followed out in landscaping, such as keeping an open lawn; planting your shrubs for the most part in masses and hedges, or screening an unsightly place; selecting varieties for the background that are taller growing, and shrubs of dwarf habits for the foreground.

There is not a home or farm in the whole country which cannot be improved in appearance and enhanced in value by a planting of appropriate shrubs and plants. Our plants are absolutely hardy, grown especially for landscape work, and once planted, last indefinitely, increasing in size and beauty year after year.



White Snowberry.

SPIREA VAN HOUTTEI (Bridal Wreath). Graceful, with long, drooping sprays, thickly studded with handsome pure white flowers, hence its popular name of "Bridal Wreath." This is the finest and probably the most beautiful of the Spireas, and one of the most popular of all shrubs. In May and June the arching branches are covered with little white flowers. The foliage is very beautiful, dark green in color, and finely cut, making the bush attractive even after the flowers are gone. It grows to six feet in height, is extremely hardy, and can be used to good advantage either as a specimen or in the border. One of the best for flowering hedges and screens, in fact, its uses are legion. This Spirea is very prominent in mass plantings, placed towards the background on account of its height and thickly studded flowers. 1-yr., field-grown plants, each 35c; 10 for \$2.50; 50 for \$10.00. No. 1, 2-yr. plants, each 50c; 10 for \$3.50; 50 for \$15.00. Extra large specimens, 4-yr. size, each \$1.00; 10 for \$7.50; 50 for \$35.00.



Hydrangea P. G.

SPIREA, BILLIARDI. Delicate, pink, plume-like flowers are one of this shrub's chief attractions. An upright grower, medium in height, and especially good in the border. Be sure to include some of this delightful Spirea in your home collection. Each 10 Strong plants, 4-yr. size\$0.50 \$4.50

SPIREA, BILLIARDI ALBA. The companion bush of the Pink Billiardi, to which is very similar except that the plume-like flowers are pure white in place of pink. Each 10 Select plants, 3-yr.\$1.00 \$8.00

SPIREA, ANTHONY WATERER. Another excellent and very effective Spirea for mass plantings. Its gay crimson flowers and variegated foliage make a beautiful contrast with other shrubs, and on account of its dwarfish nature should be kept in the foreground. It is very hardy, and with its showy bloom coming "between spells" when few other shrubs are blooming, make it doubly essential for the home planting. Each 10 50 2-yr. No. 1, average 1 ft.\$0.50 \$4.00 \$15.00 3-yr., heavy specimens 1.00 8.00

SYRINGA or MOCK ORANGE. A tall, vigorous and hardy bush. In May and June it bears profuse white flowers resembling orange blossoms, which are fine for cutting and deliciously fragrant. This shrub is very valuable for backgrounds, screens, grouping or specimen plants. They not only make a grand display at the flowering period, but they continue to please with their attractive foliage. Each 10 No. 1, field-grown, average 3 to 4 ft.\$0.50 \$4.00

SYRINGA, LEMOINEI. Somewhat similar to the Mock Orange, but does not grow quite as tall. Flowers are semi-double and very fragrant. A refined and graceful shrub used in group plantings. Each 10 2-yr., sturdy plants\$0.75 \$5.00

WHITE SNOWBERRY, Racemosus. Inconspicuous, rose-colored flowers in June and July, followed by large, clustered, milk-white fruits which remain far into Winter. This combination of pink flowers and white berries on the same twig is charming. Bush is compact in form with numerous slender, twiggy branches. Can be used in small groups or in large mass and border plantings, and kept in the foreground on account of its dwarfish habit. Will do as well in partial shade as in a sunny situation, and for this reason is very desirable for planting north of a dwelling or building where little sunlight will reach it. Your landscape effect will be incomplete without a few of these artistic shrubs.

Each 10 50 1-yr., 12 to 18 in.\$0.25 \$1.00 \$4.00 3-yr., large60 5.00



Syringa—Mock Orange.

SHRUBS—Continued

RED SNOWBERRY, *Vulgaris*. Similar to the White Snowberry except that its fruits are red and that the smaller red berries cluster in thick ropes along the weighted-down stems. The foliage is distinct in its fineness, and with the White Snowberry is very valuable for border planting. Rather dwarf in form, growing from two to four feet high, and should be used in the fore part of mass and border plantings. This species of the Snowberry is often called "Indian Currant."

	Each	10	50
1-yr., 12 to 18 in.	\$0.25	\$1.00	\$4.00
3-yr., large60	5.00



Snowball.

PINK TARTARIAN HONEYSUCKLE. A very popular Honeysuckle, perfectly hardy, an upright bush form, growing to a height of eight to ten feet. Here in Northern Iowa it is covered with beautiful pink flowers about the time of Decoration Day, which contrasts beautifully with its bright green foliage, but its chief claim is its wealth of orange and red berries, which literally cover the plant in Summer and Autumn, making a most glorious show. We have found it adaptable to almost any soil, will grow with little or no care, and for this reason is very desirable for cemeteries and landscape work. One of the best for a tall flowering hedge—I have a hedge of this artistic Honeysuckle along a driveway, which I would not part with for any reason. Every home should have a clump or hedge of Pink and White Tartarian Honeysuckle.

	Each	10	
2-yr., field-grown	\$0.50	\$4.50	
3-yr., extra large, heavy75	5.50	

WHITE TARTARIAN HONEYSUCKLE. Description the same as above except that the blossoms are pure white. Like the Pink, it bears great clusters of brilliant red berries in late Summer and Autumn.

2-yr., field-grown	\$0.50	\$4.50
3-yr., extra large, heavy75	5.50

GARDEN HONEYSUCKLE (*Lonicera Bella Albida*). A handsome shrub, strong and upright in growth. Its attractive white flowers, in large fragrant clusters, are followed by a great profusion of scarlet berries that last for two months.

	Each	10
Field-grown, 3-yr.	\$0.50	\$4.50

JAPAN HONEYSUCKLE (*Lonicera Morrowi*). A very valuable landscape shrub with its wealth of crimson berries in July and August, lasting for some time. White flowers early in the season. Its growth is upright, reaching a height of from four to six feet. With its brilliant berries and compact growth, it has established itself a permanent place in the informal hedge or background planting.

	Each	10
Extra large plants	\$1.00	\$8.00

LILAC (Common Varieties). The Lilac appears to best advantage when massed in groups, and only a few varieties of but one or two colors. You may make any number of groups of the different colors; they are easily transplanted in either Fall or Spring. This is one of the best known flowering shrubs and is deserving of its wide popularity. Universally loved for its old associations, pleasing fragrance, and delicate coloring. So well known that it needs no description.

Purple. The familiar species of all fine old gardens, with dense panicles of lilac flowers, and the most fragrant of them all.

White. Pure white in color; very fragrant flowers.

Persian Purple. A fine old species with slender branches and narrow leaves; it seldom grows more than three to five feet high. Its pale lilac flowers are very fragrant, borne in large, loose panicles. Very graceful.

	Each	10
No. 1 plants, choice of Purple, White, or Persian Purple.	\$1.00	\$6.00

Rare and Exceptional Lilacs for the Home Garden

"Lilacs are so lovely—it's a pity they don't last longer." We have heard it time and again and so have you, and we are justly proud of the fact that we can grant the wish to a few of our customers this year, for in the two following varieties you will find the very characteristics you have been longing for—Lilacs with all their beauty of color and scent blooming way into the Summer. So far they have been scarce in this country, but as they become known, they are creating an enormous demand. Their waxy green leaves are more of the formal type; their sweet fragrance and colorful blossoms opening up in June and July, sometimes lasting until the 1st of August.

It is a keen regret that we do not have more of these plants to offer, but we have just started to grow them, and can take care of only a few orders for them this season. Order now, so that we can save them for you—your choice of the following:

HUNGARIAN LILAC, Var. *Josikaea*. Deep purple buds, opening into delicate violet-colored flowers. Will grow large and bushy.

	Each	
Select, No. 1 plants	\$2.50	

LATE LILAC, Var. *Villosa*. A beautiful late variety of medium height, blooming in June and July, with exquisite pink-lilac blossoms.

	Each	
Select, No. 1 plants	\$2.50	



Tartarian Honeysuckle.

SHRUBS—Continued

FLOWERING ALMOND. Pink and white varieties. A very beautiful and graceful shrub of medium height. It is covered with very double pink or white flowers in early Spring before other shrubs have budded and is exceedingly attractive. It is hardy, but does best when planted in a protected place close to the house or in the garden. It is becoming more popular each year as planters are becoming acquainted with it.

	Each	10
Choice, pink and white	\$1.00	\$9.00

SNOWBALL, COMMON (*Viburnum Opulus Sterile*). One of our best known shrubs, hardly needing a description. It is very hardy, with handsome showy flowers that appear in numerous compact balls in the Spring. Long used for cemetery planting, and as specimen plants in the home garden, the Snowball has few rivals. Also very effective when used in groups in the informal border.

	Each	10
Well-rooted, field-grown	\$0.75	\$5.50
Extra large, 4-yr.	1.00	7.50

HIGH BUSH CRANBERRY. A sturdy, vigorous bush, with soft white flowers that resemble the Snowball very much. This ornamental shrub is very beautiful in the Fall of the year when it is loaded with clusters of orange-red berries that are retained until late in the Winter. When turning from the yellow to red, these berries are used by many housewives for jell, and it has a delicious flavor; then a few days later when they are a good red color, they make lovely jam and butter. This is another shrub that will do well on the north side of buildings where little sunlight reaches. Very hardy. Landscape men usually have a place for the High Bush Cranberry in their plans for Home Grounds.

	Each	10
3-yr., strong plants	\$1.00	\$8.50

WEIGELA ROSEA. An elegant shrub and very popular. It is covered with fine, rose-colored flowers in June, with spreading, bushy habits. Introduced from China by Mr. Fortune and considered one of the finest plants he has discovered. Leaves are dark green; flowers are large, showy, and somewhat bell-shaped. A hardy shrub, and a favorite everywhere.

	Each	10
3-yr., large	\$1.00	\$9.00



High Bush Cranberry.



Ferris' Iris Make a Charming Border for the Lovely, Old-fashioned White Lilac.

WEIGELA FLORIBUNDA. A June blooming Weigela, similar to Weigela Rosea except that the flowers are smaller and of a distinct crimson. A very beautiful shrub, rather a tall-growing sort, and a very profuse bloomer.

	Each	10
3-yr., large	\$1.00	\$9.00

ROSA RUGOSA. Really a rose, but often included in the shrubs, as it is excellent when planted with shrubs—invaluable in the border plantings. See varieties, descriptions and prices under Roses, on page 31. Be sure to include three or more of them in your new plantings or when re-modeling the old.

ACER GINNALI. A dwarf shrubby tree with beautiful leaves, finely cut, noted particularly for their magnificent Fall coloring. Can be used to advantage as a specimen, or when planted with other shrubs in the informal hedge they make a wonderful contrast in the Fall with their scarlet leaves. Every home planting should have one or more of them.

	Each	10
Extra large, 5-yr. plants	\$1.00	\$8.00



Bechtel's Flowering Crab.

FLOWERING CRAB, BECHTEL'S. One of the very best dwarf ornamental trees, and is exceptionally fine for specimen planting. The delicate pink blossoms, which from a distance look like small roses, are borne in great profusion from the middle to the last of May, and their delightful fragrance emphasizes their charm. They are a delight to the whole family, and of late years are being used extensively in cemetery plantings. Very hardy.

Each 10
3-yr., strong, field-grown plants\$1.50 \$10.00

TAMARISK (Tamarix gallica). A refined, graceful shrub, often growing to a height of from 10 to 12 feet. Foliage is very delicate and feathery, of a light green color, while the bush is topped with light pink flowers borne in loose sprays. At a distance it makes a most compelling picture—a veritable green and pink mist. One of the most attractive plantings I have ever seen contained a group of six or more Tamarisk almost surrounded by the Golden Elder—the contrast in growing habit, foliage and colorings was very artistic.

Each 10
3-yr., select, field-grown plants\$0.75 \$6.00

GOLDEN ELDER. A rapid growing shrub, easily gaining a height of from six to ten feet when untrimmed. Foliage has a startling golden yellow tinge that makes a rich contrast when planted with other shrubs in borders or groups. This bush blooms with large, white, flat-shaped heads, the red-purplish berries coming in late Summer. Plant it where it will get plenty of sunshine.

Each 10
1-yr., field-grown, strong plants\$0.35 \$3.00
Extra large, 4-yr., specimens1.00 8.50

SIBERIAN PEA TREE (Caragana). Dwarf tree in form, with bright green bark and attractive-foliage, bearing a profusion of bright yellow, pea-shaped flowers in May. Very hardy and quite a favorite in the North.

Each 10
No. 1, field-grown\$0.90 \$8.00

RED BRANCHED DOGWOOD. Shrubbery borders nowadays are scarcely complete without a generous use of these showy plants. Will grow to a great height and in tangled masses when untrimmed. The bush is a contrast in itself with its yellowish white flowers, bright red stems, and creamy white fruit. Foliage assumes soft Autumn hues. Will give good results in partial shade as well as out in the open.

Each 10
3-yr., heavy\$0.50 \$4.50

DWARF DEUTZIA. A semi-hardy, low growing plant, very graceful and refined looking with its pure white flowers borne in small racemes. Plant in the foreground, where it will be somewhat sheltered.

Each 10
Good clumps, 3-yr.\$0.75 \$6.50

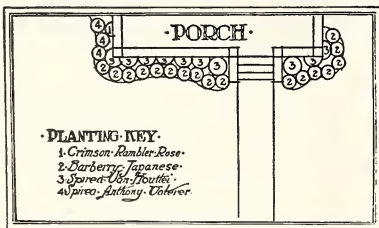
SUMAC, Fragrant. A dwarf growing shrub with beautiful foliage that has a delightful fragrance. Good in foreground of mass plantings.

Each 10
No. 1, field-grown plants\$1.00 \$9.00

SUMAC, Staghorn. A native shrub deserving of much wider planting. Foliage is deep lustrous green in the Summer followed by brilliant Fall colorings of scarlet and orange. Grows to great height, and on this account should be used largely in the background of mass plantings.

Each 10
No. 1, field-grown plants\$1.00 \$9.00

JAPANESE BARBERRY (Barberry Thunbergi). A very attractive, ornamental shrub that has a multitude of uses. It never fails to give the finishing touch to any planting. See description and prices on page 43.



LANDSCAPE PLAN NO. 14

KEY TO PLANTING:

- (1) 1 Crimson Rambler Rose
- (2) 17 Barberry—Japanese
- (3) 10 Spirea Van Houttei
- (4) 3 Spirea Anthony Waterer

Two-year, well rooted flowering shrubs that will increase the beauty of your home a thousand-fold—and think of it, the entire collection will be sent anywhere in the United States, parcel post prepaid, for \$7.00.



Hedges

Where in all the wide world will you find anything half as attractive as a graceful Barberry hedge along a driveway, an Arbor-Vitae hedge bounding the property or along a promenade walk, an old-fashioned, yet ever lovely Lilac hedge shutting in the garden, a low-clipped Privet hedge encircling the home grounds? There is nothing that can take its place.

With the hedge comes the delicate touch of privacy that makes a home really yours; it borders the picture and frames it artistically. How much more pleasing is this living, compact green hedge than a rigid, mechanical wooden or metal fence.

And too, a hedge is permanent, for once planted only occasional pruning or shearing is required. It grows more beautiful each year. The first cost is its only cost, while each year's growth adds actual money value to your farm or city property.

Select one of the following to fit your requirements, for there are few homes that cannot be made much more charming and "finished" by the addition of a Ferris Hedge.

Deciduous Hedges

Thunberg's Barberry, Japanese Guaranteed to be Free from Rust

There has been much said about the rust on the Barberry and many people have been prejudiced against the Barberry Thunbergi from the fact that the common Barberry is subject to rust. We will guarantee, though, that the Barberry Thunbergi is not subject to rust any place and that it will pass inspection in any state. Ask your state or federal authorities about it.

The Japanese or Barberry Thunbergi is a beautiful plant with drooping branches, spoon-shaped leaves, with foliage a brilliant shade of green in the Summer. From early Autumn until early Winter the leaves are of a rich crimson and the branches are loaded with scarlet berries. Even in Winter it is very attractive, as the berries stay on and the closely interwoven branches are thickly set with spines and never grow bare. We cannot recommend this hardy Barberry too highly for hedge planting. They should be planted 18 inches apart, and should not be trimmed.

	Each	10	100
1 ft., light grade	\$1.75	\$16.50	
18 to 24 in., heavy transplants60	5.00	40.00
2 to 3 ft., select, heavy specimens	1.00	7.00	60.00

Lilac

(For full description and prices, see page 40.)

The quaint, old-fashioned Lilac hedge from grandmother's back door running to the neighbor's lot or to the garden will never quite be forgotten. It is a delightful hedge and well worth duplicating in our up-to-date gardens. Plant 2 1/2 feet apart and let them grow untrimmed, except for any possible pruning out of dead branches.

Spirea Van Houttei

(For full description and prices, see page 39.)

This hardy Spirea makes a beautiful border where a medium hedge is desired. It is easily transplanted, and blossoms usually the season planted. Plant two feet apart in a hedge row.



American Arbor-Vitae Hedge.



Thunberg's Barberry Hedge.

Privet, Amoor River, North (Ligustrum amurense)

The hardiest Russian Privet of them all. It has light green leaves, is of upright growth, and is the only Privet to use for hedge plantings in the North. In our section we find it superior to any other variety. Is not subject to blight. When properly sheared will give a very formal effect. They retain their green leaves until late in the Fall. You will have a bushier, more compact hedge if you will trim it back severely as you plant it. It should be trimmed at least once a year, in May or the early part of June. Plant 12 or 18 inches apart in the hedge.

	Each	10	100
18 in.	\$0.15	\$1.00	\$ 8.00
2 ft., heavy transplants50	4.00	35.00

Tartarian Honeysuckle

(For full description and prices, see page 40.)

One of the best of the flowering shrubs for hedge. The rather indistinct pink and white blossoms are brought out to best advantage in a hedge row, and the brilliant red berries that follow late in Summer and Fall make it very artistic indeed. One of the easiest to transplant, very hardy, and will withstand much trimming. It is also good for screens and background work, as it will reach a height of 12 feet when untrimmed. Can furnish either pink or white, or part of each at the same price. We advise planting them 18 inches apart in a hedge.

Snowball

(For full description and prices, see page 41.)

The creamy white balls and dark green foliage of the Snowball make a very attractive hedge. Perfectly hardy. In a hedge they should be set about 2 1/2 feet apart.

Evergreen Hedges

American Arbor-Vitae

(For full description and prices, see page 14.)

On account of its beautiful foliage, ease in transplanting and the fact that it bears shearing better than any other variety, we consider it the best Evergreen for hedge purposes. You should start trimming two or three years after the trees have been planted, and trim annually, in May or early June. Plant the Arbor-Vitae 18 inches apart in the hedge row.

Norway Spruce

(For full description and prices, see page 12.)

The Norway Spruce is a very fast grower, and where a quick hedge or high screen is desired it will prove very satisfactory. It is hardy and will do well on a great variety of soils. One of the most beautiful hedges in the United States is to be found on the Campus of the University of Ohio, entirely of Norway Spruce. We advise the 2-ft. size, and they should be planted either 18 or 24 inches apart. They make the best trimmed hedge when kept about 6 to 8 ft. high.

Hardy Climbing Vines

Your Porch Demands One—Home's Rigid Lines Need Softening

Another comfort and pleasure of home is the climbing and flowering vines—truly as essential as are shrubs and trees, every year coming more into their own. The architecture of your home may be ever so beautiful, yet a dull gray stucco is brightened and toned into the landscape by the use of Engelmänn's Ivy. The corners are softened and a sunny porch restfully shaded with the Virginia Creeper and the lovely Wisteria.

I have yet to drive past a home where a Clematis Jackmani was blooming that my attention was not irresistibly drawn to the rich purple flowers. The renowned Boston Ivy that clings so tenderly to the ages-old buildings and preserves them with kindly memories, still creeps up a new brick wall with agile ease, and with its refined habits will always be a favorite the world over.

We grow only the hardy established vines, which are much more desirable and less trouble than annual or tender varieties.

Ampelopsis Veitchi - Boston Ivy

Leaves small and dainty, ivy-like in form. By overlapping each other they form a dense sheet of green. The plant requires a little protection the first Winter until it is established. Foliage has brilliant orange and red coloring in Autumn. One of the best clinging vines—it will climb almost any wall and makes a beautiful covering. 40c each; 10 for \$3.50. If desired by parcels post, add 5c for one, 15c for ten, to cover packing and postage.

American Ivy - Virginia Creeper

A very rapid growing vine covered with large, heavy leaves affording shade; of great beauty when changing to scarlet in Autumn. The best climber to grow over porches, rocks, fences or tree stumps. Very hardy. 30c each; 10 for \$2.50. If desired by parcel post, add 5c for one, 15c for ten, to cover packing and postage.

Ampelopsis Engelmanni - Engelmänn's Ivy

A rapid growing vine of the Virginia Creeper family, but having characteristics of its own. Leaves are smaller and many more of them than those of the Creeper. Foliage of deep green which changes to a beautiful scarlet in the Fall. Will cling only to very rough surfaces such as pebble-dash, rough brick or stone, or will climb over a trellis or wire frame. We planted this Ivy around our new two-story office building, and they climbed nearly to the roof the first season. 30c each; 10 for \$2.50. If desired by parcel post, add 5c for one, 15c for 10, to cover packing and postage.

Matrimony Vine

If there is a bare, rocky, or weed-covered bank around your home or in your community that is more or less of an eye-sore, by all means transform it into a background of beauty by planting the Matrimony Vine along it. It is made for just such places, and with its purple flowers and later its crimson berries is one of the most artistic vines of them all. A very rapid grower, extremely hardy, in addition to having good foliage. 30c each; 10 for \$2.25. If desired by parcel post add 5c for one, 15c for 10, to cover packing and postage.

Honeysuckle Vine - Scarlet Trumpet

Considered by most as the finest of the Honeysuckle Vines—a splendid climber, vigorous, hardy, with clusters of large, trumpet-shaped flowers in July and August. Excellent for porches and trellises. 30c each; 10 for \$2.50. If desired by parcel post, add 5c for one, 15c for 10, to cover packing and postage.

Chinese Wisteria

One of the most rapid growing of all the climbing vines. It grows from 15 to 20 feet in a season. Has long, pendulous clusters of pale blue flowers in May or June, and sometimes in Autumn. 75c each; 10 for \$5.00. If desired by parcel post, add 5c each, 15c for 10, to cover packing and postage.

Bittersweet

A charming native climber, with bright glossy foliage, and especially admired for its gay and artistic orange berries which are borne in long clusters in the Fall. Sprays of these bright fruits can be broken or cut off and used in lovely Winter bouquets, lasting for a long time. Always plant three or more plants to secure good coverings of fruit. 75c each; 3 for \$1.80; 10 for \$5.00. If desired by parcel post, add 5c for one, 10c for three, 15c for ten, to cover packing and postage.

Clematis

Of all the vines used for either shade or decoration, none can compare with the Clematis in its many and varied forms. As a climber for the veranda, a screen for fences, for pillars along garden walks, for training on walls or arbors, in masses on rock work, it has no rival among strong growing blossoming plants.

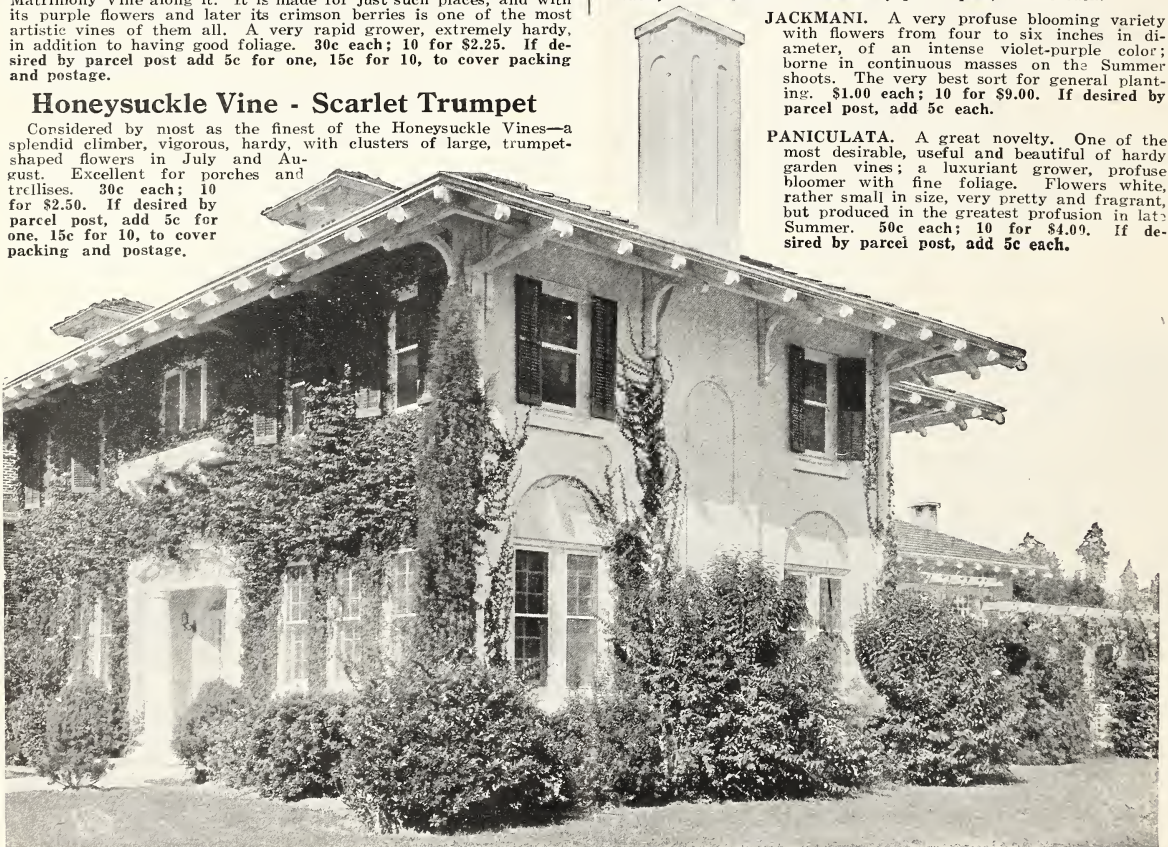
Note. For successful growth, the Clematis requires more care than the ordinary vines. Plant in rich clay soil, mounded so that the water will not stand about the plant. Water heavily before and during bloom. Cut worms may be avoided by wood ashes or a tin can with bottom cut out forced down over the plant and root.

ANDRE. Flowers large, of a beautiful, bright velvety red; very free flowering and continuous bloomer. \$1.00 each; 10 for \$9.00. If desired by parcel post, add 5c each.

HENYRI. Fine bloomer, flowers large, of a beautiful creamy white, generally of from six to eight petals. June to October. \$1.00 each; 10 for \$9.00. If desired by parcel post, add 5c each.

JACKMANI. A very profuse blooming variety with flowers from four to six inches in diameter, of an intense violet-purple color; borne in continuous masses on the Summer shoots. The very best sort for general planting. \$1.00 each; 10 for \$9.00. If desired by parcel post, add 5c each.

PANICULATA. A great novelty. One of the most desirable, useful and beautiful of hardy garden vines; a luxuriant grower, profuse bloomer with fine foliage. Flowers white, rather small in size, very pretty and fragrant, but produced in the greatest profusion in late Summer. 50c each; 10 for \$4.00. If desired by parcel post, add 5c each.



Hardy Shade and Ornamental Trees

Trees, with their great height, symmetry and graceful habits are the keynote of the general landscape. Who would be without their shady comfort in the Summer time, or fail to feel the deep thrill of opening buds in the Spring and the first flutter of green leaves? They bring the song birds and their nesting places to all homes; much of the loveliness and charm of Autumn would be gone without the gay red and yellow foliage of the shade trees.

Besides their worth in this respect, they are a source of large profits to the man who has a few acres and devotes them to a wooded lot. Lumber, fence posts and cord wood to burn all bring high market prices. The owner of farm or city property that is well planted with shade trees, wind-breaks and shrubbery finds himself possessed not only of a beautiful home, but one that has increased its value many times the original cost of the trees and plants.

In planting, the directions given on page 8 for Evergreens should be carefully followed. A judicious trimming, cutting away any broken or bruised branches and about two-thirds or all of the top will benefit the tree in every way.

Our Shade Trees are all select, heavy, transplanted trees, that are bound to give the planter fine results if properly cared for. (For Forest Tree Seedlings, see page 46).

European Mountain Ash

A rather formal, artistic tree that is very popular for lawn planting. It is fairly covered with large clusters of bright orange berries in Autumn, a vigorous grower, and foliage of a beautiful dark green. One of the finest ornamental trees grown.

	Each	10	100
3 ft.	\$0.75	\$5.00
4 ft.	1.00	7.50
5 1/2-7 ft.	1.50

Soft Maple

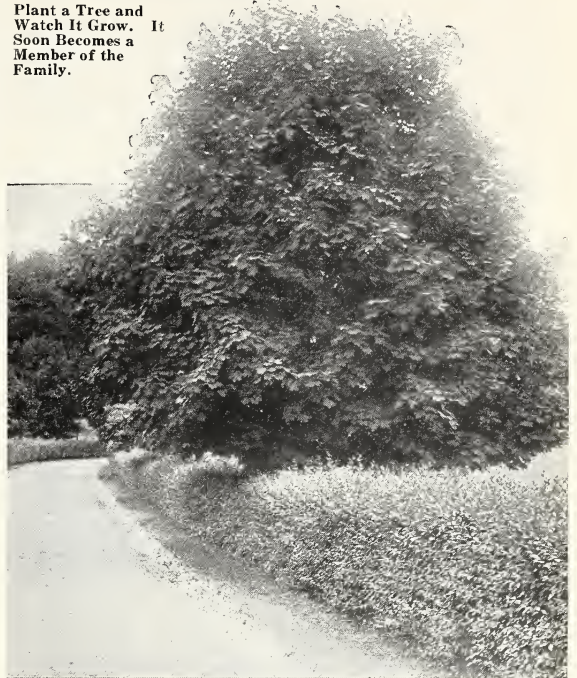
Commonly called Silver Maple on account of their attractive green leaves with silvery white facing. Trees are rounded in form, graceful in growth, and will make a beautiful tree when properly pruned. Very rapid grower and attains great height. Our Soft Maple in the nursery are beauties, well-shaped and have splendid roots.

	Each	10	100
3 ft.	\$0.35	\$2.50	\$20.00
4-5 ft.50	4.50	40.00
5-6 ft.75	5.50	50.00



Carolina Poplar.

Plant a Tree and Watch It Grow. It Soon Becomes a Member of the Family.



Norway Maple.

Weir's Cut-Leaved Maple

A beautiful tree of graceful, half-drooping habit. Leaves finely cut and luxuriant. One of the best of the ornamental trees.

	Each	10
5-6 ft.	\$1.00	\$7.00

Carolina Poplar

Takes front rank among the best of poplars; it is one of the most rapid growers among shade trees. Its branches spread just enough to give it a symmetrical appearance. It has advantages over other shade trees because it will grow on any kind of soil, swampy or mush, light or heavy. Its roots penetrate the hardest soil, it withstands all hardships and thrives in places where others fail to live. It is easily started and gives shade in a short time after planting. Leaves are large and stay green till quite late in the Fall.

	Each	10	100	500
3-5 ft.	\$0.25	\$2.00	\$12.50	\$50.00
5-6 ft.35	2.50	20.00	95.00
6-7 ft.50	4.00	35.00	125.00
7-8 ft.75	5.00	40.00	175.00
8-10 ft.	1.00	7.50	55.00	200.00

Cataipa Speciosa

The most valuable tree known when planted for commercial purposes. A thick, rough-barked tree of soft, white wood; leaves large and dark green; beautiful white flowers in July. The wood is extensively used for fence posts, railroad ties, and telegraph poles. The value of the plantations of this wood in Kansas is estimated by the United States Department of Forestry to be from \$300 to \$400 per acre. We have an extra fine lot of these trees suitable for shade trees, parks, wooded lots, etc. They are beauties in every sense of the word.

	Each	10	100
6 ft.	\$1.00	\$8.00	\$75.00

Catalpa Bungei - Umbrella Catalpa

A very striking tree for formal planting. The low spreading head is about six feet from the ground, flat and rather roof-shaped, leaves large and dense, and deep green in color. One or two of these Catalpa Bungei, planted as specimens in front of the home give that formal touch that can be attained in no other way. They require no trimming and are hardy.

Each 2-yr. heads, but headed low, 2-3 ft. high.....	\$1.00
2-yr. heads, extra good, standard height	2.00



Cut-Leaved Weeping Birch.

Basswood - American Linden

This is one of our strong-growing native trees, and one of the most desirable for shade purposes. It grows rapidly to immense size, and forms a round, compact top; this, with its broad green leaves, makes a dense shade. Has fragrant flowers and winged fruit—a great attraction to bees and birds.

	Each	10	
7-8 ft.		\$1.50	\$10.00
8-10 ft.		2.00	15.00

Black Walnut

This species is a common and stately forest tree in the Middle and Western States; grows from forty to sixty feet high, has an open, spreading head, and is rapid in growth. Produces large crops of nuts with rough, hard shell, containing rich, oily kernels of fine flavor, which command good market prices. The tree is hardy and succeeds best on a rich, deep, moist soil. Odd corners on the farm may be utilized to advantage by planting nut trees, which are a source of both pleasure and profit to the owner.

	Each	10	100
4-6 ft.		\$0.50	\$4.00
5-7 ft.60	5.00
7-10 ft.		1.00	9.00
10-12 ft.		2.00	15.00
			25.00

Norway Maple

The Norway Maple is the finest of the Hard Maples, being a more rapid grower, smoother barked, and less liable to sun-scald than the ordinary Sugar Maple. It is of spreading, rounded form; foliage large, dark green and very dense. For grace of form, beauty of foliage and graceful shade, no tree can excel it. This is the variety of Hard Maple that thrives so well along city streets where others are often killed out by smoke, drought, etc. Foliage has wonderful Fall colorings of scarlet and yellow. A great favorite for home plantings and parks.

	Each	10
6-8 ft.		\$2.75
8-10 ft.		3.50
10-12 ft.		5.00

Elm

The noble, spreading, drooping tree of our woods. One of the grandest park or shade trees. A magnificent, stately tree, easily distinguished by its wide, weeping top and pendulous branchlets. One of the most noble and graceful trees where a tall, spreading tree is desired, and a favorite the country over. For seedlings, see Forest Tree Seedlings.

	Each	10	100
4-6 ft.		\$0.50	\$4.00
6-8 ft.75	5.00

Hackberry

One of our very best native shade trees, resembling the Elm, but with rougher bark, long pointed leaves, and rather pyramidal in growth. It is very hardy, grows rapidly—deserving of more attention around our beautiful homes.

	Each	10
6-7 ft.		\$1.00
7-9 ft.		1.25

Pin Oak - Quercus Palustris

This majestic type of the Oaks is the easiest to transplant, adapting itself to the different soils and local conditions better than other varieties, and is also the fastest growing Oak. It has the deep green, waxed leaf characteristic of the Oak, artistically chiselled, turning in the Fall to a beautiful scarlet. Plant them for yourself and the future generations, as the Oaks are becoming scarce.

	Each	
6-8 ft.		\$2.00

Green Ash - Fraxinus Viridis

A very good, rapid growing shade tree. Foliage is extremely verdant, turning to yellows and browns in the Fall. Valuable commercially for its medium hard wood.

	Each	10	100
3-4 ft.		\$0.25	\$2.00
4-5 ft.50	3.50
7-8 ft.80	7.00

Honey Locust

A large, handsome tree with fine foliage and sharp thorns. It is especially fine for screens and large hedges, as it grows very rapidly. Early in the Summer green blossoms appear, followed by pods 6 to 10 inches long. One of the hardiest of our native trees, and will thrive anywhere.

	Each	10
7-10 ft.		\$1.00

Russian Mulberry

The Russian Mulberry is a tree that is becoming more popular and more valuable every year. It is used to great extent for quick windbreaks around fruit orchards, as it is a very rapid grower, easy to transplant, and thrives almost anywhere. It has a great attraction for birds, and will keep them away from more valuable fruit. The fruit, however, is used by many people for canning purposes, as Mulberry pies are very delectable. It is also a very valuable tree for fence posts.

	Each	10	100
5-6 ft.		\$0.40	\$3.50
6-8 ft.50	4.00

Weeping Trees

FERRIS' CUSTOMERS COME BACK YEAR AFTER YEAR FOR MORE TREES AND PLANTS, AND THEY ALWAYS GROW.

Gays Mills, Wis., Sept. 24, 1924.

Dear Sirs: The trees and shrubs ordered from you this Spring are sure dandy—not a one died. Those we got in 1923 are all living also. We are certainly satisfied with Ferris nursery stock, and the improvements in the looks of our little farm, due to them. We expect to order more next Spring.

EDWIN HELGERSON.

Cut-Leaved Weeping Birch

Beyond question one of the most popular and elegant of all weeping trees. Its tall, slender, yet vigorous growth, graceful, drooping habit, silvery white bark and delicately cut foliage present a combination of attractive characteristics rarely met with in a single tree. It is easily transplanted and thrives well in any soil and climate. Our supply is very limited, order early.

	Each	10
4 ft.		\$2.00
5 ft.		2.50

Forest Tree Seedlings

We have only a limited quantity of Forest Tree Seedlings this season—you will find them scarce everywhere. We would advise you to order early and be sure of getting your wants filled. Our seedlings are a fine lot, well-rooted, one-year-old, just the right size for good results. Choice of Catalpa, Elm, Mulberry, Soft Maple and Ash. We cannot sell less than 50 of one kind to a customer, as they are tied in bundles of 50 each in the beds. Strong, 1 to 2 feet, 100 for \$2.50; 500 for \$10.00; 1,000 for \$15.00; 200 at 500 rate; 600 at 1,000 rate. If desired by parcel post, add 20c per 100.

Western Yellow Willow

For windbreaks. We consider this Willow by far the best for Western planters. We have a fine lot of them in one-year grade, average about two feet high. 100 for \$5.00; 500 for \$15.00; 1,000 for \$25.00; 200 at 500 rate; 600 at 1,000 rate. If desired by parcel post, add 50c per 100.

FERRIS' SEEDS

Use Them for the Finest Flower and Vegetable Gardens

To Accomodate Ferris Customers, We Accept Seed Orders

As Small As 25 Cents

Remember—All Seed Prices are Parcel Post Prepaid

In handling your seed order, we have but one ultimate idea in view—that is, the prompt and accurate shipment of every order with the best seeds that grow. We have so built up our facilities in every possible way that we are prepared to give the most efficient service to our customers.

Relative to prices, will say that we have made them as low as the value will permit. "HIGH QUALITY AT THE LOWEST POSSIBLE PRICE" is our slogan for seeds as well as nursery stock.



Giant Branching Asters.

ASTERS, FERRIS' BEAUTY.		Pkt.
1711. Peach Blossom, pinkish orange	\$0.15
1712. Lavender Beauty, soft lavender15
1713. Purple Beauty, deep rich purple15
1714. September Beauty, delicate shell-pink15
1715. Finest Mixed. Each, 15c per pkt., 4 pkts., 50c; 1/4 oz., \$1.00.	
ASTERS, QUEEN OF THE MARKET.		Pkt.
1664. Crimson	\$0.10
1665. Dark Blue10
1666. Light Blue10
1667. Pink10
1668. Scarlet10
1669. White10
ASTER, FERRIS' GIANT BRANCHING.		
1676. Dark Crimson10
1677. Lavender10
1678. Light Pink10
1679. Light Rose10
1680. Purple10
1681. White10
AGERATUM.		
1610. Little Blue Star15
SWEET ALYSSUM.		
1622. Maritimum10
ANTIRRHINUM (Snapdragon).		
1643. Cliffwood Half Dwarf Giant Mixed15
1644. Tall Large Flowering Mixed10
GIANT DOUBLE BALSAM (Lady Slipper)		
1776. Ferris' Superior Mixed10
BLUE LACE FLOWER (Didiscus Caeruleus).		
1965. A new introduction15
CALENDULA (Pot Marigold).		
1814. All sorts Finest Mixed10
CALLIOPSIS.		
1819. Finest Mixture Calliopsis10
CAMPANULA (Bellflower).		
1822. Cup and Saucer (Calycanthema)10
1824. Medium Single Mixed (Cantterbury Bells)10

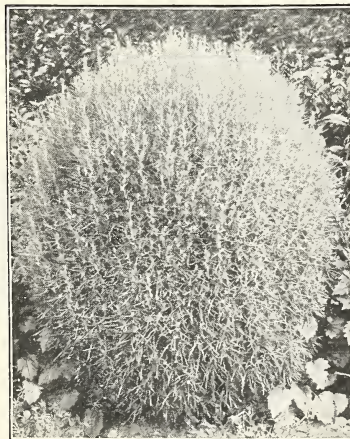
FLOWER SEED

CANDYTUFT.	Pkt.
1834. Finest Mixed—Annual Sorts	\$0.10
CARNATION.	
1859. Giant Marguerite, Mixed Colors	.15
CARDINAL CLIMBER.	
1856. One of the finest annual climbers known today. Very graceful and beautiful, growing rapidly, and in a warm, sunny location with good soil, it reaches often a height of twenty feet; densely clothed with lacerated, rich green leaves. The numerous clusters of fiery scarlet, tubular, spear-shaped flowers resemble the Cypress Vine, but are much larger, often measuring one and one-quarter inches across.	.15
CENTAUREA.	
1876. Cyanus. Single Mixed. (Bachelor Button or Corn Flower.) All colors. Annual	.10
COCKSCOMB (Celosia).	
1868. Cristata. The large flower-heads or combs are of a beautiful feathery appearance. Very showy in the flower bed and excellent as pot plants. Annual. Fine mixed	.10
2565. Childs Crimson (Chinese Woolflower). Brilliant fire-like red, a bushy plant which grows two or three feet in height. It is of the Cockscomb family and a very rapid grower	.15
FORGET-ME-NOT (Myosotis).	
1993. Alpestris. Mixed	.10
FOUR O'CLOCK (Marvel of Peru).	
2002. Finest Mixed. All colors	.10
GYSOPHILA (Baby's Breath).	
2066. Elegans, Grandiflora Alba. An Improved large-flowering strain of the annual white sort	.10



Hollyhocks.

HELICHRYSUM (Strawflower).		Pkt.
2070. Double Large Flowering. The best of the Everlasting Flowers. All colors mixed	\$0.10
HOLLYHOCKS.		
2080. Finest Single Mixed10
2086. Cliffwood Grown Double Mixed. Very hardy. Free blooming15
KOCHIA (Summer Cypress).		
2098. An ornamental annual shrub, of unusually rapid growth, forming symmetrical-shaped bushes from two to three feet in height, of a cypress-like appearance. The leaves are slender and of a light pea-green until September, when they change to carmine and blood-red. Its bright Autumn coloring has given it the name "Burning Bush." The flowers are minute, but numerous10
LARKSPUR.		
2103. Tall Emperor. Light blue, very free flowering. Height thirty inches10
LOBELIA.		
2111. Ferris' Finest. An unexcelled mixture, contains compact growing sorts only in all colors. Try this variety this year for your border; see how beautiful it is and how it sets off your flower beds10
MATRICARIA (Feverfew).		
2138. Golden Ball (Eximia). Plants of compact form, with beautiful double yellow flowers. Fine for edging. Annual. Height, twelve inches10
MIGNONETTE (Reseda).		
2144. Finest Mixed. This Mignonette mixture contains all the best sorts and cannot be excelled10



Kochia.

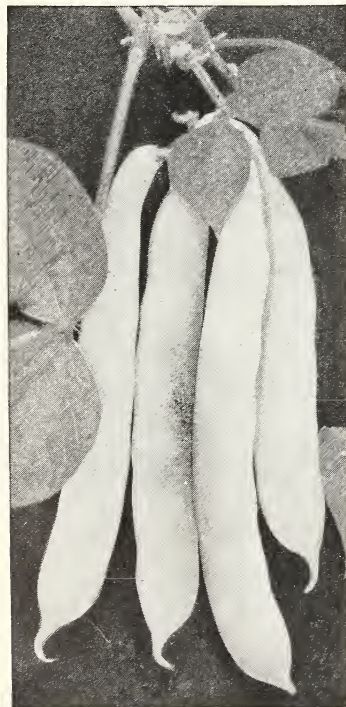
MOONFLOWER.	Pkt.
2160. A very popular, quick-growing annual vine, which will climb from thirty to forty feet in a single season; it has thick, glossy green foliage and produces thousands of rare fragrance, which open at dusk and on cloudy days	\$.10
MORNING GLORY (Convolvulus).	
2164. Tall Morning Glories. Indispensable for covering trellises, verandas, stumps, etc. Finest mixed	.10
MARIGOLD (Tagetes).	
2128. Dwarf African (Pride of the Garden). Mixed colors. Compact bushes with immense double flowers. Height 15 inches	.10
2131. Tall African. Mixed colors, large double flowers. 3 feet	.10
NASTURTIUMS.	
2208. Ferris' Dwarf Perpetual Blooming. Finest Mixed. Big pkt.	.10
2209. Ferris' Tall Perpetual Blooming Finest Mixed	.10
PORTULACA (Rose Moss).	
2401. Finest Single, Mixed.	.10
PANSIES.	
2276. Finest Mixture. All colors mixed	.25
2272. American Bedding Mixed. All colors	.10
PETUNIA.	
2334. Balcony Mixed.	.15
2324. Finest Mixed Single Flowering Bedding. An excellent mixture for brilliant flowers in all colors. Height, 18 inches	.10
PRIMULA.	
2411. Obconica Grandiflora (Large Flowering). Flowers are soft lilac, pink, rose, lavender and crimson colors	.20
PHLOX DRUMMONDI (Large Flowering).	
2350. Finest Mixed All colors	.10
POPIES.	
2383. Ferris' Improved Mammoth Shirley. The single flowers are of exquisite, satiny texture, ranging in color from delicate rose, apricot, pink, to rich crimson, all with white centers. 18 inches.	.15
2384. Finest Mixture. Single and double varieties of brilliant colors	.10



Oriental Poppies.

POPIES.	Pkt.
2379. Flanders. Lest we forget "In Flanders fields the poppies blow." This is the variety that our soldier boys knew so well in France. Every soldier mother should grow a few. The magnificent, large, single flowers are of a deep crimson color. For massing in solid beds, there is hardly a flower giving such stately, yet dazzling display of gorgeous bloom. Height, 18 inches	\$.10
2395. Oriental Poppy (Papaver Orientale). One of the most beautiful of the hardy plants. The gorgeous flowers ranging in color from pink to deepest red are often six inches across. Height, 3 ft.	.10
STRAWFLOWERS.	
2490. Everlasting Mixed. All sorts and colors	.10
SALVIA (Flowering Sage).	
2442. Splendens (Scarlet Sage). Beautiful bright scarlet. Annual. Height, 30 inches	.10

SCABIOSA (Mourning Bride).	Pkt.
2452. Large Flowering Mixed. A wide range of colors. 30 inches	\$.15
STOCKS.	
2472. Mixed (all colors)	.10
SWEET PEAS.	
2649. Giant Orchid Flowering Sweet Pea Mixture	.25
2507. Ferris' Finest Mixture. All large flowering sorts and a range of the best colors	.10
2616. Spencer Mixed. Selected Spencer colors, carefully blended.	.10
SWEET WILLIAM.	
2523. Annual Sweet William. Blooms early in Summer from Spring-sown seed and continues in flower for many weeks. All colors mixed	.10
WALLFLOWER.	
2564. Double Mixed. Deliciously fragrant double flowers, brown and orange-purple shades predominate. These are tender perennial plants and should be wintered over in cold frames	.10
VERBENA.	
2544. Mammoth Flowering Mixed. This extraordinary strain surpasses all others in size, perfection of form and richness of colors. The individual florets measure from one and one-quarter to two inches in diameter, each having a large, bright, white eye, making the coloring more vivid. Red shades predominate in this mixture	.15
ZINNIA, FERRIS' NEW DAHLIA FLOWERED.	
2584. Mixture	.15
2585. Exquisite. Light rose.	
2586. Old Rose. Old rose.	
2587. Golden State. Rich orange yellow.	
2588. Crimson Monarch. Crimson.	
2589. Dream. Deep lavender.	
2590. Polar Bear. Pure white.	
Separate colors, each pkt., 20c; 1 pkt., each of above 6 sorts, \$1.00.	
LARGE FLOWERING ZINNIA.	
2577. Orange.	2582. Yellow
2581. White.	2579. Rose.
2578. Pink.	2580. Scarlet.
Each color at 10c per pkg.	
2583. Mixed, all colors	.10
1589. One pkt. each of the above six separate colors, 50c.	

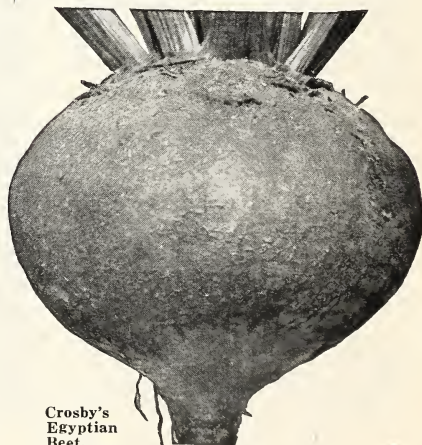


Wardwell's Delicious Wax Beans.

GARDEN SEED

Beans	Pkt.
21. FERRIS' EXTRA EARLY TENDER VALENTINE. An improved strain, very productive and hardy. Unexcelled for snap beans. The old reliable	\$.10
19. BURPEE'S STRINGLESS. The earliest bush bean. Absolutely stringless, full and fleshy, crisp and tender	.10
74. FERRIS' EARLIEST WAX. A new introduction conceded by all to be the best and earliest wax variety. Have this variety in your garden	.15
73. WARDWELL'S DELICIOUS WAX. One of the best large podded wax beans. Very robust and hardy, producing a heavy crop of showy, broad, long, flat wax pods, not liable to rust or blister.	.10
58. FERRIS' SELECT GOLDEN WAX. The standard flat wax-podded variety	.10
66. PROLIFIC BLACK WAX. Very early and productive	.10
101. GOLDEN CLUSTER POLE BEAN. Large clusters of pods 6 to 8 inches long, of delicious flavor	.10
141. KENTUCKY WONDER GREEN PODDED. Early and unusually prolific. Vigorous grower, deep green in color; finest quality	.10
115. FERRIS' GIANT BUSH POLE LIMA. The largest and tenderest of dwarf lima beans. Very meaty, of excellent flavor. The best northern variety	.10
125. EARLY LEVIATHAN POLE. The earliest of the pole limas; pods extra large and tender. A very strong and robust grower	.10

Beet	Pkt.
166. FERRIS' RED BEAUTY. The finest, sweetest table beet as yet introduced. A rich red color, delicious flavor. Don't be without this variety	\$.15
158. CROSBY'S EGYPTIAN. An improvement over Egyptian, being equally as early, larger and less flat, very uniform in size and shape, with small foliage. Flesh of excellent quality and of a distinct red slightly zoned	.10
159. DETROIT DARK RED. Excellent variety for both market and home garden. Roots medium sized, small tops, dark blood-red color	.10



Crosby's Egyptian Beet.



Early Jersey Wakefield Cabbage.

Cabbage

218. **FERRIS' EARLIEST.** Have the earliest cabbage in your neighborhood. I know this variety will delight you. The very best qualities are shown in this reselected strain\$0.15
214. **EXTRA EARLY JERSEY WAKEFIELD.** The dependable variety, pointed head, very early keeper. Tender and crisp. Short stems10
253. **PREMIUM LATE FLAT DUTCH.** Heads very large and solid. A sure header, excellent for home or market. The best large late cabbage.10
245. **DANISH BALLHEAD OR HOLLANDER.** We offer only the best Danish seed of this popular variety. Very hardy and solid, withstands dry weather and poor soil conditions.10
233. **SUCCESSION.** Heads round and slightly flattened. Intermediate or second early variety. Large heads of excellent quality10
284. **IMPROVED AMERICAN SAVOY.** The best flavored of all savoy cabbages10
273. **FERRIS' DANISH RED.** The best red cabbage. Produces ball-shaped heads of darkish purple color. Good keeper, excellent quality and flavor10

Swiss Chard

172. **LUCULLUS.** Contains many vitamins; good for the blood. Belongs to the beet family and is known as a spinach beet. Leaves are used like spinach10

Carrot

295. **FERRIS' EARLIEST CORELESS.** The earliest and tenderest of all carrots. I want you to be sure and try this variety. Cylindrical in form, small top. Best table variety15
302. **FERRIS' SELECT OXHEART.** Of bright red orange color, fine grained and sweet. Flesh tender and sweet. A well known desirable variety10
293. **FERRIS' DANVERS HALF LONG.** A half long orange carrot six to eight inches long. Very productive variety of excellent flavor. A good keeper10
292. **FERRIS CHANTENAY.** This is the best bunching variety. Medium early half long variety. Largely used by market gardeners10

Cauliflower

319. **FERRIS' EARLIEST SNOWBALL.** Our strain is the earliest in existence. The best of all varieties. Delicious flavor and very white and tender20
316. **DRY WEATHER OR DANISH GIANT.** An excellent second early variety doing unusually well in dry seasons. A good sort to grow,.... .15

Celery

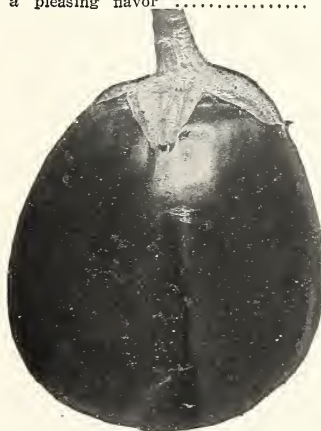
333. **FERRIS' GOLDEN SELF-BLANCHING.** The best of all celery. No variety compares with its color, crispness and tenderness. To all celery lovers I heartily recommend this early and easiest of all variety to grow\$0.15
342. **GIANT PASCAL.** A desirable long keeping Winter celery; robust, healthy stock, about 2 feet high, making broad, thick, stringless stalks and large hearts. It blanches easily to a pearly white; when blanched it is crisp and is of a fine nutty flavor10
335. **FERRIS SELECT WHITE PLUME.** A very early variety; requires a very short time for blanching, of good size and appearance; matures in about 80 days. Good for the home garden10
352. **GIANT PRAGUE.** A highly developed and larger form, almost round, uniform, smooth-skinned and free from side roots10

Corn, Sweet

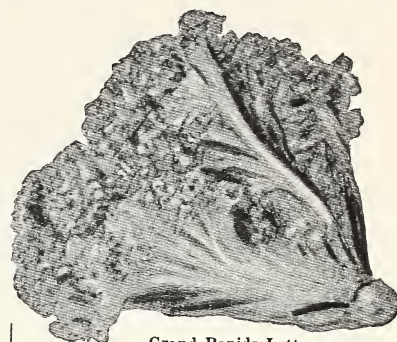
372. **FERRIS' GOLDEN BANTAM.** Everyone loves this early, tender corn of excellent quality. Our northern grown strain is unsurpassed. Stalks grow 4 to 5 feet in height, maturing in about 70 days10
402. **STOWELL'S EVERGREEN.** The standard main crop variety. Very hardy and productive. Ears seven inches long. Tender and sugary10
375. **PEEP O' DAY.** Planted ex. tensively in the northwest. A first-class medium corn of good flavor. Very prolific10
369. **EARLY MINNESOTA.** Our strain of this popular variety cannot be surpassed. This old favorite is a good kind to plant10

Cucumber

448. **FERRIS' IMPROVED LONG GREEN.** Dark green fruits, 12 to 14 inches long; quality firm, crisp and excellent. It is the best variety for big pickles10
438. **FERRIS' IMPROVED WHITE SPINE.** Long green fruits, often 12 inches in length, popular for forcing10
441. **DAVIS' PERFECT.** Should not be planted for best results nearer than 5 feet apart. It has excellent color, and the flesh is very crisp and delicate in flavor10
462. **FERRIS' CHICAGO PICKLING.** A very popular strain of the small early pickle varieties. Very productive and disease resistant. Excellent shipper. Flesh crisp and of a pleasing flavor10



Ferris' New York Purple Egg Plant.



Grand Rapids Lettuce.

Endive

502. **MOSS CURLED.** A small, compact growing variety, with densely curled moss-like leaves\$0.10

Egg Plant

494. **FERRIS' NEW YORK PURPLE.** An earlier, hardier variety with club-shaped, dark purple fruits, 6 to 8 inches long, a shape preferred by some for slicing10

Kale

512. **FERRIS' MOSS CURLED.** The best and hardiest variety, very compact in growth with dense moss curled leaves of deep green color. Grows 30 inches high. You will like this kind10

Kohlrabi

523. **FERRIS' EARLY WHITE VIENNA.** Large, quick growing, greenish white and tender white flesh10
522. **FERRIS' EARLY PURPLE VIENNA.** The outside color is purple; flesh white and delicate10

Lettuce

541. **GRAND RAPIDS.** Beautifully crumpled and curled. The dependable variety10
559. **EARLY CURLED WHITE SEEDED SIMPSON.** Form a compact mass of yellowish green, curly leaves; earlier than head lettuces.10
575. **FERRIS' PRIZEHEAD.** Here is a wrinkled variety which should be in every garden. Immense in size and delicious in flavor, it is a universal favorite10
561. **FERRIS' CREAM BUTTER.** A head lettuce which melts in your mouth it's so delicious, very hardy, good shipper, finest table quality.10
560. **FERRIS' MAY KING.** This early butter-head variety produces very compact heads of medium size. It is a sure header and is bound to give satisfaction10

Muskmelon

604. **FERRIS' SELECTED ROCKY FORD.** Everyone knows the Rocky Ford, but ours is a selected strain and the gardeners who know are purchasing it in very large quantities. Round, green flesh, very sweet10
642. **FERRIS' OSAGE.** Medium to large, slightly oval and handsomely netted; flesh rich salmon, deep, firm, sweet and melting10
612. **FERRIS' MONTREAL MARKET.** A very large green "Nutmeg" type, almost round, heavily netted, thick, luscious flesh; late and especially adapted to cooler climates10

Watermelon

- 567. **FERRIS' EARLIEST.** Here is the earliest and best melon on the market; very bright red flesh and unusually sweet. You can't beat this variety\$0.15
- 693. **IMPROVED TOM WATSON.** Long oval shape, thin but tough rind; bright scarlet flesh; excellent quality10
- 677. **ICE CREAM OR PEERLESS.** A medium-sized, almost round melon, succeeding well in the North. Skin light green, faintly mottled; flesh scarlet and solid. White seeded... .10
- 689. **KLECKLEY SWEET.** An oval-shaped variety, with dark green skin and thin rind. The bright scarlet flesh is extremely sweet10

Onion

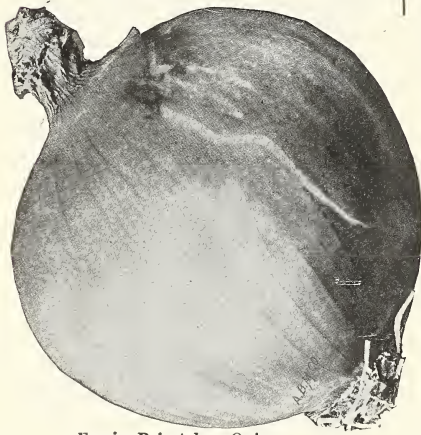
- 752. **FERRIS' SELECT SOUTHPORT YELLOW GLOBE.** Very hardy and productive; a late main crop variety; globe-shaped, a good shipper of mild flavor10
- 750. **FERRIS' SELECT SOUTHPORT RED GLOBE.** Here is a variety to grow for home use; excellent keeper, a fine flavor; just the onion for the kitchen garden10
- 751. **FERRIS' SELECT SOUTHPORT WHITE GLOBE.** An abundant yielder, firm flesh, fine grained, produces large finely shaped clear white bulbs10
- 791. **FERRIS' SELECTED GREAT RED WETHERSFIELD.** A strong flavored variety. An American variety, fine neck, bright rich red. A good onion10
- 748. **PRIZETAKER.** The largest sized onion of the main crop varieties. The skin is yellowish brown, good shipper and mild flavor10
- 755. **FERRIS' YELLOW GLOBE DANVERS.** An old favorite used in practically every garden. You can't go wrong on our strain. Try it10

Parsnip

- 832. **FERRIS' HOLLOW CROWN.** A highly esteemed variety. Roots 8 to 10 inches long, white skin, a large yielder. A fine strain10

Pumpkin

- 943. **CONNECTICUT FIELD.** A productive, large, orange-colored, field pumpkin, usually grown for stock feeding, but it also makes good pies10
- 953. **SMALL SUGAR.** A handsome and productive, small pumpkin, 10 to 12 inches in diameter; round-flattened, skin orange, flesh deep yellow, fine grained and very sweet10



Ferris Prizetaker Onion.



Ferris' Gradus Peas.

Peas

- 846. **FERRIS' EARLIEST AND BEST**\$0.10
- 878. **FERRIS' IMPROVED AMERICAN WONDER.** Height 10 to 12 inches. Extra early; of dwarf, compact growth, wrinkled, of the finest quality10
- 855. **FERRIS' GRADUS**10
- 864. **FERRIS' ALDERMAN.** Height 5 feet. One of the best early main crop varieties, vigorous and productive of large, long, deep green pods, packed with dark green wrinkled peas of the largest size and of unsurpassed quality10

Pepper

- 929. **FERRIS' IMPROVED RUBY KING.** A favorite sort for use as salad, stuffing, etc.10
- 922. **FERRIS' CHINESE GIANT.** The fruits are mammoth, averaging 12 to 15 inches in circumference and, notwithstanding the immense size, are early and prolific; the well-branched plants, about 2 feet high, carry a large crop of most attractive peppers. The flesh is thick, tender, mild, sweet10

Parsley

- 822. **FERRIS' DOUBLE MOSS CURLED.** A popular, fine dwarf, beautifully curled sort10

Radish

- 975. **FERRIS' EARLY BIRD.** The best of all small forcing red radishes. Matures in 16 to 20 days. Very juicy and of delicious flavor. I heartily recommend this Early Bird radish to my customers10
- 1010. **IMPROVED FRENCH BREAKFAST.** A favorite oval-shaped bright scarlet radish with white tip; fine for either open ground or forcing10
- 1014. **VICK'S SCARLET GLOBE.** Very early; a little longer than round; small top; color, brilliant deep scarlet; very attractive appearance10
- 1021. **FERRIS' ICICLE.** The earliest and best of all long white varieties. Pure white in color, 4 inches long with short tops; it's unexcelled10
- 1033. **GIANT STUTTGART SUMMER RADISH.** A large, white, oval-shaped Summer radish. Very tender and mild10
- 1041. **ROUND BLACK SPANISH WINTER.** The roots are round, three inches in diameter. The skin is almost black, a good keeper through the Winter10

Squash

- 1099. **FERRIS' IMPROVED HUBBARD.** Of all the varieties of squashes the finest to my mind is the new strain of improved Hubbard. A good eater. Average weight 10 pounds\$0.10
- 1086. **MAMMOTH WHITE BUSH SCALLOP.** The white "Patty Pan" or "Cymbling;" creamy white skin; fine quality, free cropper10

Tomato

- 1118. **FERRIS' EARLIEST OF ALL.** Of all the vegetables the tomato contains the most vitamin. This variety is the best of the early tomatoes. Brilliant scarlet in color, nearly round, of good size. Will please the most particular10
- 1141. **FERRIS' IMPROVED PONDEROSA.** Customers, if you want the largest, meatiest of all tomatoes, try this one. Excellent for slicing and very prolific10
- 1122. **FERRIS' SELECT STONE.** Large, regularly shaped fruit, flesh firm, skin scarlet and tough, making it one of the best keeping and shipping varieties10
- 1114. **CHALK'S EARLY JEWEL.** One of the best early varieties; about a week later than Earliana. The fruit of the Jewel, however, averages larger, is uniform, smooth, solid, of fine quality, and brilliant scarlet; a heavy cropper10
- 1117. **EARLIANA.** A very early red tomato, fruits uniform in size, solid thick flesh, a good shipper. You will like it10

Spinach

- 1065. **KING OF DENMARK.** A new variety which is the best of all, withstands heat and dry weather. The finest of all spinaches. Slower to run to seed10
- 1070. **FERRIS' SAVOY OR BLOOMSDALE.** The earliest of all spinaches. Dark green leaves of medium size. Ready for use in 40 days10

Rutabaga

- 1508. **AMERICAN PURPLE TOP.** Popular for both stock feeding and table use; hardy, productive, good keeper; flesh rich yellow10

Turnip

- 1211. **FERRIS' PURPLE TOP STRAP LEAF.** An old standard variety extensively grown, very early, good size and flavor10
- 1212. **FERRIS' PURPLE TOP WHITE GLOBE.** The best white turnip, flesh is tender and fine grained; a very mild flavor10



Scarlet Globe Radishes.



Ferris' Five Famous Seed Collections

Collections are put up for advertising purposes early in the season and cannot be changed, divided, or altered in any manner.

The seeds in these bargain collections are of the same high quality as the rest of our seeds, but we are able to furnish them at these low bargain prices because they are put up in immense quantities before our rest begins—because we can keep our employes busy during the dull season.

Ferris' Dollar Vegetable Collection

25 Packages Postpaid \$1

- | | |
|---------------------------------------|---------------------------------------|
| 1. Beans, Golden Wax. | 14. Melon, Water, Ferris' Sweetheart. |
| 2. Beans, Ex. Early Tender Valentine. | 15. Onion, Yellow Globe Danvers. |
| 3. Beet, Crosby's Egyptian. | 16. Parsnip, Crown. |
| 4. Cabbage, Ferris' Lightning. | 17. Parsley, Moss Curled. |
| 5. Carrot, Danvers Half Long. | 18. Peas, Ferris' Earliest and Best. |
| 6. Cauliflower, Early Paris. | 19. Pepper, Pimiento. |
| 7. Celery, Ferris' Self Blancher. | 20. Radish, Early White Turnip. |
| 8. Corn, Sweet, Early Minnesota. | 21. Radish, Sparkler. |
| 9. Cucumber, Improved White Spine. | 22. Rutabaga, American Purple Top. |
| 10. Kohlrabi, Early White Yenna. | 23. Spinach, Savoy. |
| 11. Lettuce, Black Seeded Simpson. | 24. Squash, Delicious. |
| 12. Lettuce, Cream Butter. | 25. Tomato, Chalk's Early Jewel. |
| 13. Muskmelon, Selected Rocky Ford. | |

Ferris' Superb Collection of Annual Flowers

25 Full Size Packages Postpaid \$1

- | | | | |
|-----------------|-------------------|-----------------|-----------------|
| 1. Aceratum. | 7. Calliopsis. | 14. Hollyhock | 20. Portulaca. |
| 2. Alyssum. | 8. Candytuft. | (Annual). | 21. Stocks. |
| 3. Antirrhinum. | 9. Centaurea. | 15. Marigold. | 22. Sweet Peas. |
| 4. Aster. | 10. Cosmos. | 16. Mignonette. | 23. Scabiosa. |
| 5. Balsam. | 11. Dianthus. | 17. Nasturtium. | 24. Verbena. |
| 6. Celosia. | 12. Four O'Clock. | 18. Pansy. | 25. Zinnia. |
| | 13. Gaillardia. | 19. Poppy | |

This collection of twenty-five separate packets is composed of the best Ferris strains. All varieties are free flowering and will produce a gorgeous display from early Spring until frost. An unusual value. Order early.

Ferris' Ideal Perennial Flower Collection

15 Packets of the Finest \$1

- The demand for Perennial Flowers is increasing remarkably every season, and because of this great call for them, we are making up this special collection for our customers. Perennial Flowers, grown from seed, sometimes do not bloom until the second year, but remember that they live indefinitely.
- | | | |
|-----------------------|-----------------------|------------------------|
| 1. Alyssum saxatile | 6. Delphinium | 11. Hollyhocks, Mixed. |
| (Basket of Gold). | 7. Dianthus plumarius | 12. Poppy, Iceland. |
| 2. Aquilegia | semperflorens. | 13. Shasta Daisy. |
| 3. Asters, Perennial. | 8. Digitalis. | 14. Sweet William. |
| 4. Campanula. | 9. Gaillardia. | 15. Violas. |
| 5. Coreopsis. | 10. Cosmos, P. G. | |

Ferris' Special 50c Vegetable Collection

10 Packages Postpaid 50c

- | | |
|-----------------------------------|------------------------------------|
| 1. Golden Wax Bean. | 6. Lettuce, Black Seeded Simpson. |
| 2. Beet, Fireball. | 7. Onion, Red Wethersfield. |
| 3. Carrot, Chautauq. | 8. Radish, Blood Red White Tipped. |
| 4. Cabbage, Jersey Wakefield. | 9. Tomato, Chalk's Early Jewel. |
| 5. Cucumber, Improved Long Green. | 10. Turnip, Purple Top Strap Leaf. |

Finest 50c Flower Collection Ever Offered

10 Packages Postpaid 50c

- | | | | |
|---------------|-------------------|-------------------|----------------|
| 1. Alyssum. | 3. Candytuft. | 6. Shirley Poppy. | 9. Sweet Peas. |
| 2. Calendula. | 4. Eschscholtzia. | 7. Scabiosa. | 10. Balsam. |
| | 5. Marigold. | 8. Mignonette. | |



Ferris Rose Collection

- | | |
|-----------------------|---------------------|
| 1. Premier | 6. Clio |
| 2. Mrs. Aaron Ward | 7. Ulrich Brunner |
| 3. Frau Karl Druschki | 8. La France |
| 4. Sunburst | 9. Gruss an Teplitz |
| 5. J. B. Clark | 10. British Queen |

(For descriptions, see pages 30-31)

Regular Catalog Price, \$7.25

Special Bargain Offer to Ferris Customers
on These Ten Select 2-Year Roses

\$4.85 Parcel Post
Prepaid