

始



米麥統計表

栃木縣編

昭和八年

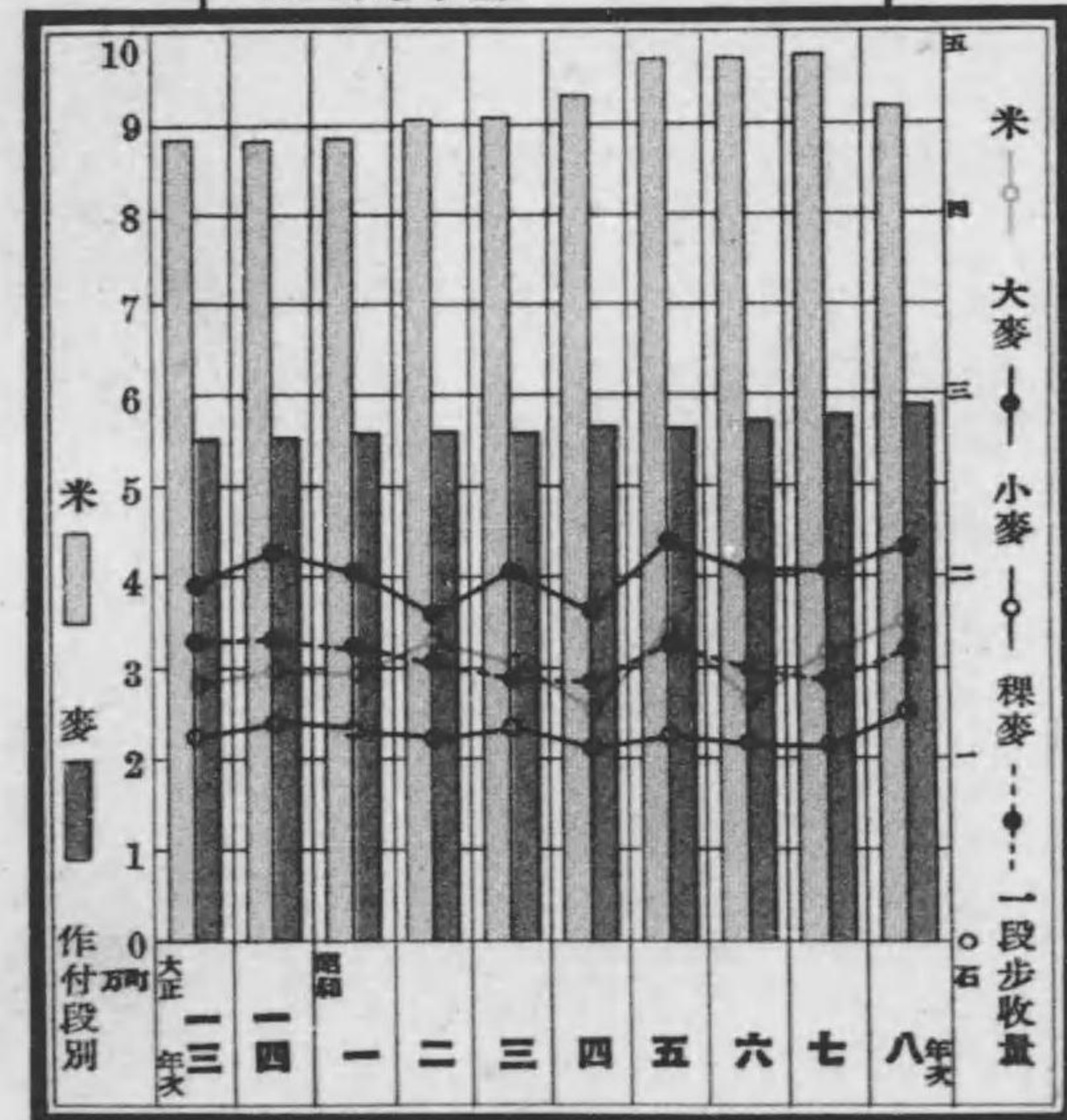
142
219

昭和八年

米麥統計表

栃木縣

米麥作付段別及一段歩收量十ヶ年比較



栃木縣知事官房統計課



1. 本表ハ大正十四年十月二十八日農林省令第二十五號農林省統計報告規則

ニ基キ市町村長ノ提出セル報告書ニ依リ之ヲ編纂セリ

2. 本表ハ昭和八年ノ事實ヲ表章シ尙冒頭ニ大正十三年以降ノ事實ヲ掲載シ

累年比較ノ便ニ供セリ

3. 本表中數字ノ間ニ「,」ヲ附セルハ數位「.」ヲ附セルハ單位ヲ示スモノ

トス

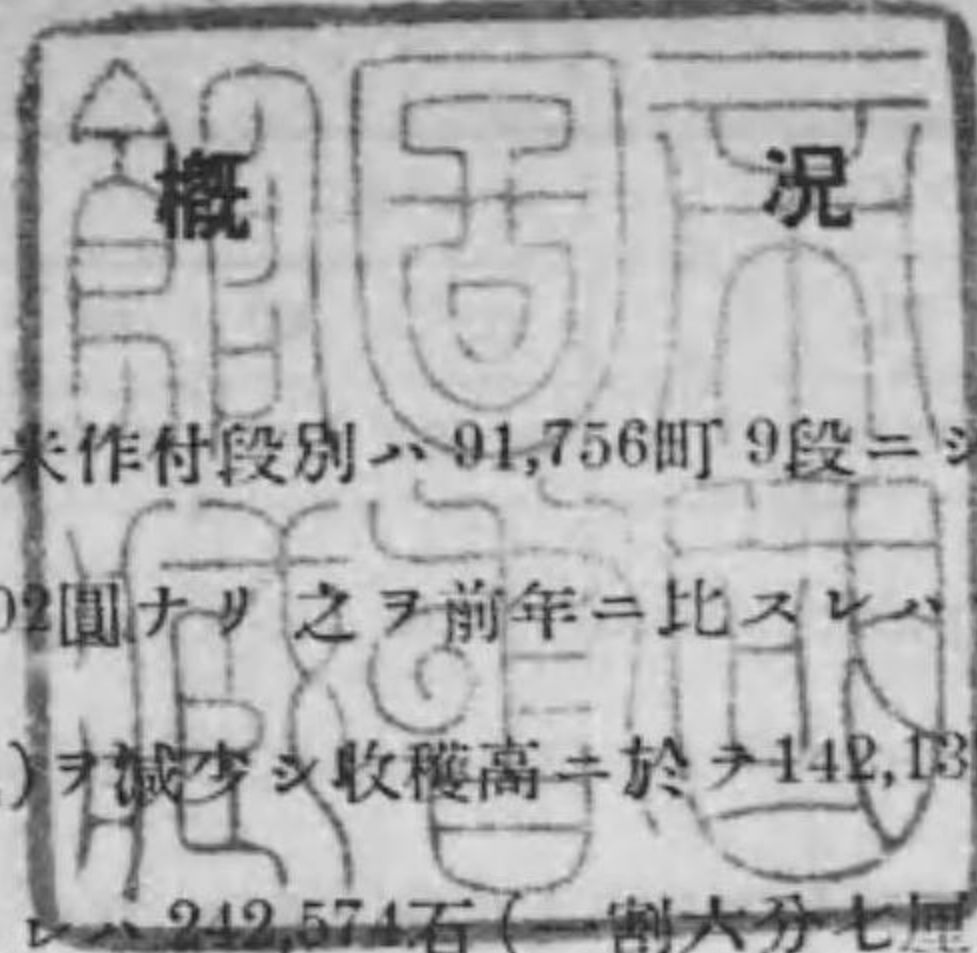
4. 本表中事實ナキモノニ付テハ「—」ヲ附セリ

昭和九年九月

栃木縣知事官房統計課



14.20-219



目次

第一 米作累年比較 2

第二 昭和八年米作郡市別 2

第三 昭和八年米作郡市町村別 4

第四 麥作累年比較 14

第五 昭和八年麥作郡市別 14

第六 昭和八年麥作郡市町村別 16

[米]昭和八年ニ於ケル米作付段別ハ91,756町9段ニシテ收穫高ハ1,691,519石此ノ價額33,221,702圓ナリ之ヲ前年ニ比スレハ作付段別ニ於テ5,775町7段(五分五厘一毛)ヲ減少シ收穫高ニ於テ142,137石(九分二厘)前五ケ年平均收穫高ニ比スレハ242,574石(一割六分七厘)ノ增收ナリ而シテ如上ノ增收ヲ觀タルハ主トシテ一般ニ氣候適順ナリシニ依ル尙昭和八年全國一道府縣平均米作付反別ハ67,534町7段收穫高ハ1,507,386石ニシテ本縣收穫高ハ全國ノ第十六位ニ在リ

參考ノ爲隣接各縣ニ於ケル收穫高ヲ示セハ次ノ如シ (單位石)

福島縣	2,280,764	茨城縣	2,065,549
群馬縣	937,961	埼玉縣	1,457,490

[麥]昭和八年ニ於ケル麥作付段別ハ59,730町ニシテ收穫高ハ1,064,341石此ノ價額11,492,210圓ナリ之ヲ前年ニ比スレハ作付段別ニ於テ1,409町4段收穫高ニ於テ152,029石(一割六分七厘)ヲ孰レモ増加シ前五ケ年平均收穫高ニ比スレハ169,181石(一割八分九厘)ノ增收ナリ而シテ如上ノ増加ヲ觀タルハ主トシテ氣候概ネ適順ナリシニ依ル尙昭和八年全國一道府縣平均麥作付段別29,805町4段收穫高431,249石ニシテ本縣收穫高ハ全國ノ第三位ニ在リ

參考ノ爲隣接各縣ニ於ケル收穫高ヲ示セハ次ノ如シ (單位石)

福島縣	445,005	茨城縣	1,527,411
群馬縣	878,815	埼玉縣	1,268,410

第一

米作果

年次	作付段別(町)				計	收穫高(石)				計	價	
	水 稻		陸 稻			水 稻		陸 稻			水 稻	
	粳米	糯米	粳米	糯米		粳米	糯米	粳米	糯米		粳米	糯米
大正十三年	66,527.4	3,221.5	4,478.1	14,199.3	88,426.3	1,147,407	50,071	24,124	83,407	1,305,009	46,467,891	2,243,522
同 十四年	67,153.3	3,367.9	4,181.1	13,944.2	88,646.5	1,154,877	53,007	49,939	160,007	1,417,830	41,576,905	1,951,084
大正十五年 昭和元年	66,703.9	3,338.3	4,777.5	13,707.3	88,577.0	1,107,211	52,178	45,089	149,566	1,363,034	37,002,227	1,704,191
同 二年	67,891.6	3,322.9	5,189.5	13,871.0	90,275.0	1,266,674	57,539	71,639	179,961	1,575,813	37,571,362	1,785,319
同 三年	68,261.4	3,526.6	5,474.1	13,510.8	90,772.9	1,113,459	51,042	59,835	139,914	1,364,250	30,334,820	1,552,430
同 四年	69,847.1	3,927.1	5,611.6	13,432.2	92,818.0	1,083,536	53,190	33,095	89,265	1,265,146	28,480,803	1,597,769
同 五年	72,697.2	4,123.5	6,231.2	13,955.3	97,007.2	1,370,837	71,255	76,732	161,044	1,679,868	22,376,470	1,115,658
同 六年	73,217.9	3,811.6	6,301.8	14,100.6	97,461.9	1,158,797	56,007	53,375	117,838	1,386,077	18,747,218	1,052,999
同 七年	73,159.5	4,044.3	6,308.0	14,020.8	97,532.6	1,314,583	64,883	55,506	114,410	1,549,382	26,798,259	1,553,962
同 八年	70,632.1	3,489.2	7,517.0	10,098.6	91,756.9	1,439,963	62,701	86,055	102,890	1,631,519	28,881,312	1,144,825

第二

昭和八年

米作郡

河内郡	12,160.3	431.5	922.8	1,457.4	14,972.0	247,211	7,029	11,614	16,358	282,812	4,925,967	138,305
上都賀郡	4,981.9	275.9	527.8	529.0	6,314.6	117,855	4,577	7,651	7,638	137,781	2,347,238	82,248
芳賀郡	11,782.0	391.5	947.3	2,065.9	15,186.7	222,811	6,536	11,117	20,923	261,447	4,419,595	118,886
下都賀郡	13,061.9	736.0	1,557.3	2,982.4	18,339.6	258,356	13,712	12,701	21,580	306,149	5,234,770	250,823
鹽谷郡	10,587.7	608.7	753.4	595.1	12,544.9	212,505	10,761	9,480	6,913	231,659	4,286,453	135,445
那須郡	11,157.5	663.8	2,202.1	1,981.1	16,004.5	224,761	11,293	28,865	25,014	289,933	4,481,517	204,545
安蘇郡	2,961.4	124.0	419.5	349.7	3,854.6	66,759	2,602	2,726	2,881	74,968	1,354,136	48,501
足利郡	3,503.3	240.2	152.2	62.4	3,958.1	80,149	5,169	1,368	5,880	87,274	1,637,496	98,925
宇都宮市	271.8	3.4	31.5	71.5	378.2	5,529	62	501	1,028	7,120	110,580	1,147
足利市	191.3	14.2	3.1	4.1	212.7	4,027	300	32	17	4,376	83,560	6,000

年比較

(全管)

額(圓)			一段歩收穫高(石)						一石=付價額(圓)				
陸 稻		計	水 稻			陸 稻			總平均	水 稻		陸 稻	
粳米	糯米		粳米	糯米	平均	粳米	糯米	平均		粳米	糯米	粳米	糯米
932,894	3,580,593	53,224,903	1.725	1.553	1.717	0.539	0.587	0.576	1.476	40.50	44.81	38.67	42.93
1,705,443	5,372,501	50,605,933	1.720	1.574	1.713	1.194	1.147	1.158	1.599	36.00	36.81	34.15	33.58
1,599,428	4,331,436	44,637,282	1.660	1.540	1.654	1.132	1.091	1.102	1.539	33.42	32.66	29.57	28.96
1,875,727	4,914,320	46,146,728	1.866	1.732	1.859	1.380	1.297	1.320	1.746	29.66	31.03	26.18	27.31
1,431,696	3,853,756	37,172,702	1.631	1.447	1.622	1.093	1.036	1.052	1.503	27.24	30.41	23.93	27.54
917,281	2,442,436	33,438,289	1.551	1.354	1.511	0.697	0.665	0.674	1.363	26.28	30.04	23.46	27.36
1,108,278	2,264,034	26,864,440	1.886	1.728	1.877	1.231	1.154	1.178	1.732	16.32	15.66	14.44	14.06
759,953	1,937,861	22,555,031	1.563	1.458	1.576	0.847	0.836	0.839	1.422	16.18	18.80	14.24	16.95
1,005,570	2,479,189	31,836,980	1.797	1.604	1.787	0.880	0.816	0.836	1.589	20.39	23.95	18.12	21.67
1,491,625	1,703,940	33,221,702	2.038	1.797	2.027	1.145	1.018	1.072	1.843	20.06	18.26	17.33	16.58

市 別

202,075	271,481	5,537,828	2.033	1.768	2.024	1.259	1.122	1.175	1.889	19.93	18.13	17.40	16.60
127,784	131,419	2,688,689	2.366	1.659	2.329	1.458	1.453	1.452	2.182	19.92	17.97	16.65	17.00
194,363	333,900	5,066,744	1.891	1.685	1.884	1.174	1.013	1.063	1.722	19.84	18.02	17.48	15.96
217,137	364,163	6,066,893	1.979	1.863	1.973	816	717	751	1.670	20.20	18.29	17.10	17.03
163,776	112,269	4,757,943	2.007	1.768	1.994	1.258	1.162	1.216	1.910	20.17	18.16	17.28	16.24
505,046	414,474	5,605,582	2.014	1.701	1.997	1.311	1.263	1.288	1.812	19.94	18.11	17.50	16.57
48,003	48,767	1,499,407	2.254	2.098	2.248	650	824	729	1.945	20.28	18.64	17.61	16.93
24,364	10,207	1,770,932	2.288	2.152	2.279	899	943	911	2.205	20.43	19.14	17.81	17.36
8,517	16,962	137,206	2.053	1.824	2.032	1.590	1.438	1.484	1.883	20.00	18.50	17.00	16.50
560	238	90,418	2.105	2.113	2.106	1.032	415	681	2.057	20.75	20.00	17.50	17.53

郡市町村	作付反別(町)						收穫高(石)									
	水			陸			合	水			陸			合		
	梗米	糯米	計	梗米	糯米	計		計	梗米	糯米	計	梗米	糯米		計	
河	横川	776.4	18.2	794.6	47.9	126.4	174.3	968.9	14,090	293	14,383	574	1,324	1,938	16,281	
	平石	820.6	31.0	851.6	64.8	70.3	135.1	986.7	16,330	527	16,857	674	626	1,300	18,157	
	瑞穂野	524.3	27.0	551.3	49.9	33.6	83.5	634.8	10,284	496	10,780	617	400	1,017	11,797	
	本郷	546.5	22.9	569.4	25.1	33.9	59.0	628.4	10,890	425	11,315	403	488	891	12,206	
	上三川	530.0	27.0	557.0	26.6	66.6	93.2	630.2	11,197	561	11,758	366	650	1,016	12,774	
	吉田	225.5	28.1	253.6	19.2	20.7	39.9	263.5	9,228	578	9,806	276	273	549	10,355	
	薬師寺	478.3	35.1	513.4	45.4	62.4	107.8	621.2	8,914	663	9,577	364	483	847	10,424	
	明治	507.2	25.9	533.1	44.6	100.7	145.3	678.4	9,129	466	9,595	446	604	1,050	10,645	
	明雀宮	586.0	15.8	601.8	66.2	88.5	144.7	746.5	11,057	291	11,348	638	918	1,556	12,904	
	麥川	496.3	2.4	498.7	80.6	116.0	196.6	695.3	9,131	36	9,167	1,193	1,517	2,710	11,877	
	城山	466.4	2.6	469.0	118.7	82.7	201.4	670.4	10,253	55	10,308	1,771	1,138	2,909	13,217	
	國本	377.7	1.8	379.5	77.4	82.4	159.8	539.3	6,766	27	6,793	849	945	1,794	8,587	
	富屋	319.0	9.9	328.9	16.7	81.8	98.5	427.4	7,457	159	7,616	298	1,152	1,450	9,066	
	大澤	645.9	39.0	684.9	33.7	50.1	83.8	768.7	13,984	602	14,586	544	810	1,354	15,940	
	豊岡	527.9	27.5	555.4	7.4	31.4	38.8	594.2	12,583	379	12,962	122	411	533	13,495	
	篠井	665.0	22.4	687.4	51.4	80.6	132.0	819.4	12,624	344	12,968	610	918	1,528	14,496	
	羽黒	603.2	13.9	617.1	27.0	80.9	107.9	725.0	13,781	288	14,069	346	944	1,290	15,359	
	絹島	791.2	26.1	817.3	22.6	17.9	40.5	857.8	17,420	459	17,879	290	216	506	18,385	
	古里	677.3	32.8	710.1	83.7	44.7	128.4	838.5	14,972	624	15,596	938	471	1,409	17,005	
	田原	688.8	10.4	699.2	2.9	82.0	84.9	784.1	12,376	168	12,544	32	887	919	13,463	
	豊郷	706.8	11.7	718.5	21.0	103.8	124.8	843.3	14,745	188	14,933	263	1,183	1,446	16,379	
	計	12,160.3	431.5	12,591.8	922.8	1,457.4	2,380.2	14,972.0	247,211	7,629	254,840	11,614	16,358	27,972	282,812	
	上	鹿沼	202.6	3.9	206.5	16.3	22.4	38.7	245.2	4,810	84	4,894	248	320	568	5,462
	菊澤	449.4	16.6	466.0	64.6	44.9	109.5	575.5	10,174	294	10,468	801	490	1,291	11,759	
	北大飼	227.0	1.0	228.0	172.6	105.7	278.3	506.3	5,812	21	5,833	2,136	1,413	3,609	9,442	
	北押原	478.5	15.6	494.1	37.1	55.1	92.2	586.3	10,388	301	10,689	597	895	1,492	12,181	
	南押原	537.5	47.3	584.8	76.3	83.6	159.9	744.7	12,000	339	12,339	1,053	1,240	2,293	14,632	
	西方	583.8	24.3	608.1	.7	6.1	6.8	614.9	16,731	640	17,341	12	127	139	17,480	
	眞名子	61.4	3.3	64.7	7.6	11.7	19.3	84.0	1,275	49	1,324	104	159	263	1,587	
	清洲	251.2	17.2	268.4	5.3	3.8	9.1	277.5	5,533	351	5,884	63	55	118	6,002	
	永野	73.6	3.3	76.9	7.5	8.3	15.8	92.7	1,986	70	2,056	142	152	294	2,350	
	粕尾	131.3	6.9	138.2	2.0	8.3	10.3	148.5	2,879	125	3,004	36	131	167	3,171	
	栗野	165.7	20.2	185.9	2.2	5.7	7.9	193.8	3,427	225	3,652	37	58	95	3,747	
	南摩	253.5	14.5	268.0	15.2	6.8	22.0	290.0	6,285	292	6,577	272	125	397	6,974	
	加蘇	190.0	12.4	202.4	26.3	13.4	39.7	242.1	4,451	248	4,699	504	252	756	5,455	
	東大芦	379.2	26.5	405.7	12.9	13.4	26.3	432.0	9,249	539	9,788	230	213	443	10,231	

町村	價額(圓)						一反歩收穫高(石)				一石二付價格(圓)				
	水			陸			合	水		陸		水		陸	
	梗米	糯米	計	梗米	糯米	計		計	梗米	糯米	梗米	糯米	梗米	糯米	
	281,800	5,274	287,074	9,758	21,846	31,604	318,678	1.815	1.609	1.198	1.047	20.00	18.00	17.00	16.50
	326,600	9,486	336,086	11,795	10,642	22,437	358,523	1.990	1.700	1.040	0.890	20.00	18.00	17.50	17.00
	205,680	9,424	215,104	10,798	6,800	17,598	232,702	1.961	1.840	1.236	1.190	20.00	19.00	17.50	17.00
	217,800	7,650	225,450	6,851	8,052	14,903	240,353	1.993	1.856	1.605	1.439	20.00	18.00	17.00	16.50
	223,940	10,098	234,038	4,655	10,725	15,380	249,418	2.113	2.077	1.376	0.976	20.00	18.00	12.72	16.50
	184,560	9,826	194,386	4,416	4,521	8,937	203,323	2.170	2.057	1.438	1.319	20.00	17.00	16.00	16.56
	184,261	12,419	196,680	6,100	7,912	14,012	210,692	1.864	1.890	0.802	0.774	20.68	18.73	16.76	16.38
	187,144	9,040	196,184	7,805	10,449	18,254	214,438	1.800	1.800	1.000	0.600	20.50	19.40	17.50	17.30
	216,717	5,238	221,955	11,803	16,065	27,868	249,823	1.887	1.842	1.135	1.037	19.60	18.00	18.50	17.50
	178,055	583	178,638	20,520	23,362	43,882	222,520	1.840	1.500	1.480	1.308	19.50	16.20	17.20	15.40
	205,060	935	205,995	32,764	18,777	51,541	257,536	2.198	2.115	1.492	1.376	20.00	17.00	18.50	16.50
	138,703	500	139,203	14,001	15,120	29,121	168,324	1.791	1.500	1.097	1.148	20.50	18.52	16.50	16.00
	149,140	2,802	152,002	5,215	19,584	24,799	176,801	2.338	1.606	1.784	1.408	20.00	18.00	17.50	17.00
	279,680	10,294	289,914	9,792	13,365	23,157	313,071	2.165	1.544	1.614	1.617	20.00	17.00	18.00	16.50
	245,369	7,118	252,487	2,169	7,308	9,477	261,964	2.384	1.378	1.649	1.309	19.50	18.78	17.78	17.78
	252,480	6,020	258,500	10,370	14,917	25,287	283,787	1.898	1.536	1.187	1.139	20.00	17.50	17.00	16.25
	275,620	5,472	281,092	6,065	16,048	22,113	303,195	2.285	2.072	1.281	1.169	20.00	19.00	17.50	17.00
	348,400	8,492	356,892	4,930	3,564	8,494	365,386	2.202	1.759	1.283	1.207	20.00	18.50	17.00	16.50
	299,440	11,232	310,672	16,884	7,772	24,656	335,328	2.211	1.902	1.121	1.054	20.00	18.00	18.00	16.50
	237,930	2,962	240,892	523	14,636	15,164	256,116	1.797	1.615	1.103	1.082	19.23	17.63	16.50	16.50
	287,528	3,440	290,968	4,866	20,016	24,882	315,850	2.086	1.607	1.232	1.140	19.50	18.30	18.50	16.92
	4,925,967	138,305	5,064,272	202,075	271,481	473,556	5,537,828	2.033	1.768	1.259	1.122	19.93	18.13	17.40	16.60
	96,200	1,529	97,729	4,290	5,808	10,098	107,827	2.374	2.150	1.520	1.430	20.00	18.20	17.30	18.15
	211,120	5,150	216,270	14,660	7,980	22,640	238,910	2.264	1.771	1.240	1.091	20.75	17.52	18.30	16.29
	110,428	378	110,806	32,940	22,608	55,548	166,354	2.561	2.100	1.272	1.335	19.00	18.00	15.00	16.00
	201,527	5,644	207,171	10,823	15,215	26,038	233,209	2.171	1.929	1.610	1.630	19.40	18.75	18.13	17.00
	240,000	6,109	246,109	17,901	22,320	40,221	250,886	2.233	0.717	1.380	1.484	20.00	18.00	17.00	18.00
	334,620	10,217	344,837	201	2,032	2,233	347,070	2.866	2.511	1.842	2.517	20.00	16.75	16.75	16.00
	25,500	882	26,382	1,872	2,703	4,575	30,957	2.076	1.480	1.368	1.358	20.00	18.00	18.00	17.00
	110,660	6,143	116,803	945	858	1,803	118,606	2.203	2.041	1.189	1.447	20.00	17.50	15.00	15.60
	39,720	1,260	40,980	2,663	2,584	5,247	46,227								

郡市町村	作付反別(町)							收穫高(石)							
	水			陸			合	水			陸			合	
	梗米	糯米	計	梗米	糯米	計		計	梗米	糯米	計	梗米	糯米		計
上	西大芦	26.9	1.7	28.6	5.8	5.2	11.0	39.6	502	29	531	92	73	165	696
都	板荷	91.9	7.8	99.7	13.6	11.9	25.5	125.2	2,156	154	2,310	271	199	470	2,780
	小來川	22.0	2.5	24.5	2.3	5.1	7.4	31.9	508	56	564	42	110	152	716
	落合	382.5	10.7	393.2	54.8	65.7	120.5	513.7	9,074	189	9,263	904	1,031	1,935	11,198
	今市	331.1	29.3	420.4	4.7	38.4	43.1	463.5	9,036	423	9,465	47	489	536	10,001
賀	日光	82.8	10.9	93.7	—	13.5	13.5	107.2	1,579	172	1,751	—	166	166	1,917
	足尾	—	—	—	—	—	—	—	—	—	—	—	—	—	—
	計	4,981.9	275.9	5,257.8	527.8	529.0	1,056.8	6,314.6	117,855	4,577	122,432	7,651	7,698	15,349	137,781
芳	眞岡	571.3	11.8	583.1	35.3	139.0	168.3	751.4	10,563	188	10,751	263	844	1,137	11,888
	大内	1,144.3	40.5	1,184.8	32.9	180.2	213.1	1,397.9	19,592	337	19,929	362	1,623	1,985	21,974
	中	523.1	14.4	537.5	52.3	85.4	137.7	675.2	8,959	238	9,197	587	836	1,423	10,620
	長沼	474.7	27.1	501.8	26.9	43.1	70.0	571.8	9,024	516	10,140	280	465	745	10,885
	久下田	498.1	16.7	514.8	12.3	90.4	102.7	617.5	9,288	264	9,552	123	637	760	10,312
	物部	981.8	25.3	1,007.1	7.6	89.9	97.5	1,104.6	18,638	479	19,117	101	920	1,021	20,138
	山前	1,129.7	33.2	1,168.9	20.7	182.3	203.0	1,371.9	17,465	633	18,098	236	2,088	2,324	20,422
	田野	353.3	3.5	361.8	12.9	127.9	140.8	502.6	5,889	61	5,950	120	731	851	6,801
	益子	415.2	9.9	425.1	27.6	116.1	143.7	568.8	8,449	158	8,607	275	1,072	1,347	9,954
	七井	444.2	11.9	456.1	86.0	121.7	207.7	663.8	9,727	287	10,014	1,371	1,730	3,101	13,115
	逆川	422.8	24.6	447.4	37.4	61.2	98.6	546.0	9,114	472	9,586	433	587	1,020	10,606
	茂木	281.7	10.9	292.6	34.6	32.3	66.9	359.5	6,633	225	6,858	412	370	782	7,640
	中川	213.6	13.4	227.0	122.9	66.3	189.2	416.2	4,170	218	4,388	1,282	547	1,829	6,217
	須藤	263.5	8.0	271.5	45.0	60.2	105.2	376.7	5,797	144	5,941	585	722	1,307	7,248
	小貝	351.1	6.3	357.4	53.8	93.6	147.4	504.8	8,313	140	8,453	670	1,169	1,839	10,292
賀	市羽	743.5	20.2	763.7	50.4	153.5	203.9	967.6	15,432	377	15,809	632	1,865	2,497	18,306
	祖母井	715.1	28.9	744.0	35.6	77.8	113.4	857.4	14,778	492	15,270	574	1,049	1,623	16,893
	南高根	916.2	24.3	940.5	45.6	124.5	170.1	1,110.6	16,342	380	16,722	527	1,295	1,822	18,544
	水橋	881.3	41.9	923.2	40.8	77.6	118.4	1,041.6	15,506	681	16,187	494	836	1,330	17,517
	清原	452.5	12.7	465.2	166.7	148.9	315.6	780.8	8,532	246	8,778	1,760	1,537	3,297	12,075
	計	11,782.0	391.5	12,173.5	947.3	2,065.9	3,013.2	15,186.7	222,811	6,596	229,407	11,117	20,923	32,040	261,447
下	栃木	533.9	30.1	570.0	6.4	20.9	27.3	597.3	9,691	536	10,227	50	158	208	10,435
	大宮	548.3	35.6	583.9	8.6	38.3	46.9	630.8	10,779	652	11,431	74	347	421	11,852
	國府	352.9	18.8	371.7	49.1	95.3	144.4	516.1	7,518	376	7,894	498	855	1,353	9,247
都	壬生	266.9	6.7	273.6	87.6	103.8	191.4	465.0	5,433	107	5,540	1,042	1,067	2,109	7,649
	稻葉	504.0	21.3	525.3	54.1	85.3	139.4	664.7	9,006	398	9,404	622	871	1,493	10,897
	南大洞	340.5	5.7	346.2	193.8	197.8	397.6	743.8	6,903	100	7,003	2,387	2,030	4,417	11,420
賀	委	302.8	19.6	322.4	53.6	94.6	148.2	530.6	7,795	237	8,032	738	885	1,623	9,655

郡市町村	價額(圓)						一反步收穫高(石)				一石=付價格(圓)				
	水			陸			合	水		陸		水		陸	
	梗米	糯米	計	梗米	糯米	計		計	梗米	糯米	梗米	糯米	梗米	糯米	
	9,538	493	10,031	1,380	1,168	2,548	12,579	1.866	1.705	1.586	1.403	19.00	17.00	15.00	16.00
	43,120	2,695	45,815	5,014	3,383	8,397	54,212	2.346	1.974	1.993	1.672	20.00	17.50	18.50	17.00
	9,144	1,064	10,208	672	1,870	2,542	12,750	2.311	2.206	1.816	2.207	18.00	19.00	16.00	17.00
	181,480	3,552	185,032	14,916	17,527	32,443	217,475	2.378	1.749	1.648	1.581	20.00	18.80	16.50	17.00
	177,106	8,023	185,129	874	9,047	9,921	195,050	2.310	1.464	1.000	1.273	19.60	18.70	18.60	18.50
	31,975	3,406	35,381	—	2,922	2,922	38,303	1.907	1.578	—	1.230	20.25	19.80	—	17.60
	—	—	—	—	—	—	—	—	—	—	—	—	—	—	—
	2,347,238	82,248	2,429,486	127,784	131,419	259,203	2,688,689	2.366	1.659	1.458	1.453	19.92	17.97	16.65	17.00
	211,240	3,572	214,812	5,274	14,331	19,605	234,417	1.849	1.593	0.830	0.635	20.00	19.00	180.0	16.98
	391,840	6,352	398,192	5,792	24,345	30,137	428,329	1.712	980	1.100	0.901	20.00	16.00	16.00	15.00
	179,180	4,196	183,376	10,566	13,903	24,469	207,845	1.713	1.653	1.122	0.979	20.00	17.63	18.00	16.63
	187,764	9,463	197,227	4,806	7,807	12,613	209,900	2.027	1.904	1.041	1.078	19.51	18.34	17.38	16.79
	185,760	5,016	190,776	2,214	10,192	12,406	203,182	1.865	1.581	1.000	0.705	20.00	19.00	18.00	16.00
	372,760	8,383	381,143	1,616	13,800	15,416	396,559	1.898	1.893	1.329	1.024	20.00	17.50	16.00	15.00
	327,294	11,078	338,372	3,686	32,615	36,301	374,673	1.546	1.614	1.237	1.145	18.74	17.50	15.62	15.62
	117,780	1,068	118,848	3,160	10,965	13,125	131,973	1.644	1.743	0.930	0.572	20.00	17.50	18.00	15.00
	173,120	2,765	175,885	4,813	17,152	21,965	197,850	2.035	1.565	0.997	0.923	20.49	17.50	17.50	16.00
	194,540	5,453	199,993	24,678	27,680	52,358	252,351	2.199	2.190	1.595	1.439	20.00	19.00	18.00	16.00
	177,723	8,968	186,691	7,361	9,392	16,753	203,444	2.156	1.919	1.158	0.959	19.50	19.00	17.00	16.00
	129,343	4,162	133,505	7,416	6,105	13,521	147,026	2.355	2.064	1.191	1.146	19.50	18.50	18.00	16.50
	87,570	4,360	91,930	23,076	8,752	31,828	123,758	1.952	1.627	1.043	0.825	21.00	20.00	18.00	16.00
	115,940	2,592	118,532	9,945	12,281	22,226	140,758	2.200	1.800	1.300	1.199	20.00	18.00	17.00	17.00
	167,380	2,520	169,900	11,645	20,075	31,720	201,620	2.368	2.222	1.245	1.249	20.13	18.00	17.38	17.17
	308,640	6,786	315,426	10,744	29,840	40,584	356,010	2.076	1.866	1.254	1.215	20.00	18.00	17.00	16.00
	295,560	8,354	303,914	9,758	15,735	25,493	329,417	2.067	1.702	1.612	1.348	20.00	17.00	17.00	15.00
	315,401	6,175	321,576	9,555	19,425	28,980	350,556	1.784	1.564	1.156	1.040	19.30	15.25	18.13	15.00
	310,120	12,933	323,053	8,398	13,376	21,774	344,833	1.759	1.625	1.211	1.077	20.00	19.00	17.00	16.00
	170,640	4,574	175,214	30,800	26,129	56,929	232,143	1.886	1.937	1.056	1.032	20.00	19.00	17.50	17.00
	4,419,595	118,886	4,538,481	194,363	333,900	528,263	5,066,744	1.891	1.685	1.174	1.013	19.84	18.02	17.48	15.96
	193,820	10,050	203,870	888	2,765	3,653	207,523	1.795	1.780	0.781	0.755	20.00	18.75	17.75	17.50
	226,359	11,736	238,095	1,221	5,893	7,120	245,215	1.974	1.831	0.					

郡市町村	作付反別(町)						收穫高(石)								
	水		陸		合		水		陸		合				
	梗米	糯米	計	梗米	糯米	計	計	梗米	糯米	計	計				
石橋	165.5	9.3	174.8	45.9	65.5	111.4	286.2	3,803	193	3,996	405	396	801	4,797	
國分寺	448.1	52.1	500.2	73.8	109.0	182.8	683.0	7,935	912	8,847	562	750	1,312	10,159	
桑	532.3	31.8	564.1	58.2	237.0	295.2	859.3	9,217	381	9,598	609	1,690	2,299	11,897	
絹	512.2	36.3	548.5	16.6	23.6	40.2	588.7	12,063	787	12,850	282	348	600	13,450	
小山	190.0	6	190.6	34.5	179.5	214.0	404.6	3,659	10	3,669	292	1,454	1,746	5,415	
大谷	539.6	10.7	550.3	29.6	303.9	333.5	883.8	9,717	175	9,892	215	1,831	2,046	11,938	
間々田	337.5	3.3	340.8	87.4	142.9	230.3	571.1	6,650	73	2,723	468	640	1,108	7,831	
野木	414.4	6	415.0	96.3	270.9	367.2	782.2	6,456	7	6,463	666	1,612	2,278	8,741	
生井	329.1	15.9	345.0	14.4	43.3	57.7	402.7	6,778	283	7,061	152	352	494	7,555	
寒川	374.0	26.0	400.0	0.4	5.3	5.7	405.7	9,488	572	10,060	2	21	23	10,083	
穂積	616.9	38.8	655.7	0.4	20.7	24.7	680.4	13,251	795	14,046	39	179	218	14,264	
豊田	1,029.1	81.4	1,130.5	7.8	17.7	25.5	1,156.0	21,169	1,530	22,699	81	171	252	22,951	
中	537.7	41.8	579.5	—	3.3	3.3	582.8	11,389	829	12,218	—	19	19	12,237	
瑞穂	621.1	51.3	672.4	7.7	14.7	22.4	694.8	13,159	972	14,131	22	48	70	14,201	
水代	388.0	21.2	409.2	53.4	116.0	169.4	578.6	8,143	421	8,564	377	747	1,124	9,688	
部屋	343.7	10.4	359.1	56.6	25.8	142.4	501.5	7,022	225	7,247	201	347	548	7,795	
藤岡	85.9	3.9	89.8	48.1	24.2	72.3	162.1	1,808	81	1,949	207	101	308	2,257	
赤麻	56.8	7	57.5	109.2	53.9	163.1	220.6	1,067	9	1,079	478	236	714	1,790	
三鴨	127.6	7	128.3	97.7	64.9	162.6	290.9	2,069	12	2,081	646	386	1,032	3,113	
岩舟	141.4	1.2	142.6	76.0	59.3	135.3	277.9	2,018	28	2,046	441	298	739	2,785	
小野寺	385.7	33.9	419.6	2.3	9.0	11.3	430.9	7,405	717	8,122	13	59	72	8,194	
富山	279.1	6.9	286.0	11.3	57.8	69.1	355.1	4,870	146	5,016	62	258	320	5,336	
静和	192.5	2.1	194.6	76.4	144.3	220.7	415.3	2,595	29	2,624	335	646	981	3,605	
皆川	289.1	28.8	317.9	16.9	30.7	47.6	365.5	5,880	513	6,393	143	187	330	6,723	
吹上	223.4	11.2	234.6	31.1	60.8	91.9	326.5	4,177	191	4,368	198	431	629	4,997	
寺尾	197.9	15.9	213.8	2.2	8.5	10.7	224.5	4,247	301	4,548	23	90	113	4,661	
赤津	333.7	49.1	442.8	10.0	74.0	84.0	526.8	7,165	893	8,058	108	791	899	8,957	
家中	362.3	12.3	374.6	30.3	119.9	150.2	524.8	7,971	221	8,192	303	1,079	1,382	9,574	
計	13,054.9	736.0	13,790.9	1,557.3	2,982.4	4,539.7	18,330.6	258,356	13,712	272,068	12,701	21,380	34,081	306,149	
鹽	矢板	688.1	26.6	714.7	67.2	48.5	115.7	830.4	13,369	466	13,835	759	607	1,366	15,201
泉	607.5	95.7	703.2	36.4	33.7	70.1	773.3	11,890	1,727	13,617	507	432	939	14,556	
碓根	387.3	107.4	494.7	42.9	33.4	76.3	571.0	7,900	1,829	9,729	565	416	981	10,710	
鹽原	36.7	8.9	45.6	—	—	—	45.6	716	140	856	—	—	—	856	
三依	7	3.5	4.2	2	—	2	4.4	7	33	40	2	—	2	42	
栗山	2.6	—	2.6	—	—	—	2.6	36	—	36	—	—	—	36	
藤原	40.2	1.6	41.8	24.7	14.3	39.0	80.8	559	23	582	338	194	532	1,114	

町村	價額(圓)						一段歩收穫高(石)				一石=付價格(圓)			
	水		陸		合		水		陸		水		陸	
	梗米	糯米	計	梗米	糯米	計	計	梗米	糯米	梗米	糯米	梗米	糯米	
79,863	4,343	84,206	7,339	7,722	15,061	99,267	2,298	2,075	0.882	0.605	21.00	22.50	18.12	19.50
158,700	15,504	174,204	12,546	17,440	29,986	204,190	1,771	1,751	0.762	0.689	20.00	17.00	17.00	16.00
184,340	7,239	191,579	10,962	30,420	41,382	232,961	1,731	1,194	1.049	0.713	20.00	19.00	18.00	18.00
241,260	14,166	255,426	4,586	6,080	10,666	266,102	2,356	2,174	1.518	1.474	20.00	18.00	18.20	17.50
75,009	178	75,187	4,667	25,735	30,392	105,579	1,925	1,666	0.846	0.810	20.05	17.80	15.95	17.70
204,057	3,150	207,207	3,440	28,380	31,820	239,027	1,800	1,660	0.800	0.600	21.00	18.00	16.00	15.50
133,000	1,369	134,369	7,900	10,400	18,300	152,669	1,970	2,212	0.535	0.448	20.00	18.75	16.98	16.25
135,576	130	135,706	12,321	28,210	40,531	176,237	1,558	1,167	0.692	0.595	21.00	18.60	18.50	17.50
135,560	5,377	140,937	2,670	6,396	9,066	149,943	2,050	1,780	0.986	0.813	20.00	19.00	18.00	18.00
189,760	10,296	200,056	34	357	391	200,447	2,537	2,200	0.378	0.400	20.00	18.00	17.00	17.00
267,670	15,100	282,770	702	3,043	3,745	286,515	2,140	2,040	0.975	0.863	20.02	19.00	18.00	17.00
423,380	29,064	452,444	1,212	2,898	4,110	456,554	2,018	1,850	1.030	0.960	20.00	19.00	15.00	17.00
233,475	15,751	249,226	—	333	333	249,559	2,118	1,983	—	0.575	20.50	19.00	—	17.50
268,443	17,107	285,550	363	778	1,141	286,691	2,118	1,894	0.285	0.326	20.40	17.60	16.50	16.20
162,860	7,367	170,227	5,655	11,205	16,860	187,087	2,100	2,000	0.710	0.660	20.00	1.750	15.00	15.00
139,308	4,430	143,738	3,486	6,081	9,567	153,305	2,014	2,163	0.369	0.404	19.84	19.24	17.34	17.52
37,360	1,539	38,899	3,726	1,717	5,443	44,342	2,175	2,076	0.431	0.417	20.00	19.00	18.00	17.00
21,713	193	21,906	7,275	3,658	10,933	32,839	1,878	1,285	0.437	0.438	20.35	21.40	15.22	15.50
42,415	210	42,625	10,336	6,755	17,091	59,716	1,620	1,714	0.660	0.594	20.50	17.50	16.00	17.50
41,066	532	41,598	7,607	5,066	12,673	54,271	1,427	2,333	0.580	0.502	20.35	19.00	17.25	17.00
148,100	12,906	161,006	221	944	1,165	162,171	2,000	1,920	0.600	0.670	20.00	18.00	17.00	16.00
102,270	2,701	104,971	1,054	4,513	5,569	110,540	1,745	2,118	0.551	0.446	21.00	18.50	17.00	17.50
53,846	544	54,390	5,568	11,932	17,610	72,000	1,348	1,380	0.438	0.448	20.75	18.75	16.95	18.47
117,600	9,234	126,834	2,574	3,179	5,753	132,587	2,034	1,781	0.846	0.609	20.00	18.00	18.00	17.00
83,540	3,700	87,240	3,465	7,814	11,279	98,519	1,869	1,705	0.636	0.708	20.00	19.37	17.50	18.13
86,002	5,382	91,384	374	1,463	1,837	93,221	2,146	1,833	1.046	1.059	20.25	17.88	16.25	16.25
150,465	16,074	166,539	1,944	12,666	14,600	181,139	1,820	1,819	1.080	1.069	21.00	18.00	18.00	16.00
159,420	3,978	163,398	5,151	18,883	24,034	187,432	2,200	1,800	1.000	0.900	20.00	17.50	17.00	9.00
5,234,770	250,823	5,485,593	217,137	364,163	581,300	6,066,893	1,979	1,863	0.816	0.717	20.26	18.29	17.10	17.03
275,669	8,738	284,407	12,903	9,481	22,384	306,791	1,942	1,751	1.131	1.249	20.62	18.75	17.00	15.62
237,800	31,086	268,886	8,720	7,042	15,762	284,648	1,909	1,804	1.398	1.230	20.00	18.00	17.20	16.30
158,000	33,562	191,562	9,888	6,864	16,752	208,314	2,040	1,703	1.317	1.246	20.00	18.35	17.50	16.50
14,320	2,660	16,980	—	—	—	16,980	1,951	1,573	—	—	20.00	19.00	—	—
140	627	767	35	—	35	802	1,000	943	1.000	—	20.00	19.00	19.18	17.50
684	—	6												

郡市町村	作付反別(町)						收穫高(石)								
	水		陸		合	計	水		陸		合	計			
	梗米	糯米	計	梗米			糯米	計	梗米	糯米			計		
鹽	船生	565.7	31.9	537.6	35.3	23.1	58.4	596.0	11,865	618	12,483	621	381	1,002	13,485
	玉生	382.5	20.1	402.6	49.0	23.2	72.2	474.8	8,959	333	9,352	785	357	1,142	10,494
	大宮	837.3	28.7	926.0	37.7	28.1	65.8	991.8	19,165	538	19,703	515	332	847	20,550
	氏家	1,275.0	38.8	1,313.8	84.9	49.0	133.9	1,447.7	24,827	647	25,474	813	444	1,257	26,731
	阿久津	1,134.3	76.1	1,210.4	87.0	76.8	163.8	1,374.2	22,157	1,446	23,603	1,168	1,026	3,194	25,797
	北高根澤	1,932.4	77.9	2,030.3	56.8	81.2	141.0	2,171.3	36,319	1,278	37,597	611	949	1,560	39,157
	熟田	1,403.7	40.7	1,444.4	61.3	53.7	115.0	1,559.4	29,478	814	30,292	582	376	928	31,220
	喜連川	679.7	23.2	702.9	76.5	95.2	171.7	874.6	13,030	365	13,455	1,025	1,021	2,046	15,501
谷	片岡	594.0	27.6	621.6	93.5	31.9	125.4	747.0	12,168	444	12,612	1,219	378	1,597	14,209
	計	10,587.7	608.7	11,196.4	753.4	595.1	1,348.5	12,544.9	212,505	10,761	223,266	9,480	6,913	16,393	233,659
	大田原	236.0	9.1	245.1	77.7	31.8	109.5	354.6	4,065	134	4,199	939	360	1,299	5,498
	親園	736.5	33.7	836.2	62.8	20.1	82.9	919.1	15,666	609	16,275	755	268	963	17,238
	野崎	506.4	62.9	569.3	51.1	20.7	71.8	641.1	10,047	907	10,954	811	265	1,076	12,030
	佐久山	468.9	22.4	491.3	49.4	38.9	88.3	579.6	9,368	400	9,768	540	407	947	10,715
那	上江川	518.4	28.9	547.3	61.9	200.6	262.5	809.8	10,604	502	11,106	785	2,786	3,571	14,677
	下江川	660.7	16.6	677.3	23.5	256.5	280.0	957.3	12,445	266	12,711	267	2,798	3,065	15,776
	荒川	457.9	8.4	466.3	97.1	139.9	237.0	703.3	10,872	166	11,038	1,399	1,858	3,257	14,295
	向田	177.9	16.4	194.3	48.4	24.1	72.5	266.8	5,248	403	5,651	1,061	487	1,548	7,205
	境	174.9	15.8	190.7	41.0	43.4	84.4	275.1	4,326	322	4,648	735	689	1,424	6,072
	鳥山	31.0	1.3	32.3	8.0	0.5	8.5	40.8	616	23	645	177	12	189	834
	七合	281.4	8.3	289.7	92.3	86.8	179.1	468.8	5,602	132	5,734	1,531	1,298	2,829	8,563
	武茂	142.6	3.5	146.1	12.8	28.8	41.6	187.7	2,785	51	2,836	180	386	566	3,402
	馬頭	237.8	25.1	322.9	53.4	76.5	129.9	452.8	6,370	404	6,774	788	976	1,764	8,538
	大内	162.4	13.9	176.3	9.1	25.4	35.5	211.8	3,960	292	4,252	143	356	499	4,751
	大山田	198.8	13.1	211.9	32.3	37.5	69.8	281.7	4,369	225	4,594	467	496	963	5,557
	那珂	810.1	31.3	841.4	26.9	92.4	119.3	960.7	15,325	490	15,815	354	1,189	1,543	17,358
	湯津上	927.7	36.1	963.8	116.2	62.7	178.9	1,142.7	18,332	637	19,029	1,353	664	2,017	21,046
	川西	367.2	17.1	384.3	98.2	33.3	131.5	515.8	7,248	304	7,552	1,198	390	1,578	9,130
	黒羽	353.1	23.9	377.0	24.0	26.2	50.2	427.2	7,216	372	7,588	259	259	518	8,106
	須賀川	170.3	22.6	192.9	4.6	12.8	17.4	210.3	3,619	421	4,040	64	170	234	4,274
	兩郷	339.0	28.2	367.2	20.8	19.3	40.1	407.3	6,928	473	7,401	286	234	520	7,921
須	伊王野	341.6	25.5	367.1	32.1	25.8	57.9	425.0	7,670	465	8,135	525	301	826	8,961
	芦野	287.7	44.6	332.3	9.7	12.1	21.8	354.1	6,298	928	7,226	135	151	286	7,512
	那須	636.8	81.3	780.1	51.4	82.1	133.5	913.6	13,116	1,269	14,385	836	1,527	2,363	16,748
	鍋掛	153.9	11.8	165.7	123.7	68.0	191.7	357.4	3,021	221	3,242	1,263	658	1,921	5,163
	金田	1,153.7	40.5	1,194.2	323.4	181.5	504.9	1,699.1	20,928	645	21,573	3,810	1,932	5,802	27,375

郡市町村	價額(圓)						一段歩收穫高(石)				一石二付價格(圓)				
	水		陸		合	計	水		陸		水		陸		
	梗米	糯米	計	梗米			糯米	計	計	梗米	糯米	梗米	糯米	梗米	糯米
	237,300	11,124	248,424	10,681	6,287	16,968	265,392	2.346	1.937	1.759	1.649	20.00	18.00	17.20	16.50
	179,180	7,074	186,254	13,227	5,783	19,010	205,264	2.342	1.955	1.602	1.539	20.00	18.00	16.85	16.20
	383,300	9,684	392,984	9,013	5,412	14,425	407,409	2.136	1.874	1.104	1.191	20.00	18.00	17.50	15.30
	621,367	11,323	632,690	13,740	6,926	20,666	553,366	1.947	1.668	0.958	0.906	21.00	17.50	16.90	15.60
	443,140	26,028	469,168	20,440	16,929	37,369	506,537	1.963	1.900	1.343	1.336	20.00	18.00	17.50	16.50
	726,380	23,004	749,384	10,387	15,469	25,856	775,240	1.860	1.640	1.075	1.127	20.00	18.00	17.00	16.30
	589,560	15,466	605,026	9,384	6,129	15,513	620,539	2.100	2.000	0.900	0.700	20.00	19.00	17.00	16.30
	265,073	6,617	271,690	16,686	16,213	32,899	304,559	1.926	1.573	1.340	1.073	20.25	18.13	16.25	15.88
	243,360	7,932	251,352	21,942	6,048	27,990	279,342	2.048	1.609	1.304	1.185	20.00	18.00	18.00	16.00
	4,286,453	195,445	4,481,898	163,776	112,269	276,045	4,757,943	2.007	1.768	1.258	1.162	20.17	18.16	17.28	16.24
	81,300	2,412	83,712	16,902	5,760	22,662	106,374	1.722	1.473	1.208	1.132	20.00	18.00	18.00	16.00
	313,320	11,266	324,586	12,684	3,370	16,054	340,640	1.967	1.534	1.202	1.035	20.00	18.50	16.80	16.20
	200,940	16,326	217,266	14,598	4,240	18,838	236,104	1.984	1.442	1.587	1.280	20.00	18.00	18.00	16.00
	187,360	7,200	194,560	9,720	6,919	16,639	211,199	1.998	1.786	1.093	1.046	20.00	18.00	18.00	17.00
	212,080	8,785	220,865	13,738	47,362	61,100	281,965	2.046	1.737	1.268	1.389	20.00	17.50	17.50	17.00
	252,011	4,988	256,999	4,886	46,167	51,053	308,052	1.884	1.602	1.136	1.091	20.25	18.75	18.30	16.50
	223,420	2,988	226,408	23,783	29,728	53,511	279,919	2.374	1.881	1.440	1.328	20.55	18.00	17.00	16.00
	110,208	7,362	117,570	16,976	8,279	25,255	142,825	2.950	2.494	2.192	2.021	21.00	18.00	16.00	17.00
	83,765	5,796	89,561	12,495	11,369	23,864	119,425	2.473	2.038	1.793	1.587	20.75	18.00	17.00	16.50
	12,320	522	12,842	3,009	198	3,207	16,049	1.987	2.231	2.213	2.400	20.00	18.00	17.00	16.50
	114,941	2,310	117,151	27,558	22,156	49,714	166,865	1.991	1.590	1.652	1.495	20.50	17.50	18.00	17.07
	55,171	893	56,064	3,150	6,273	9,423	65,487	1.953	1.457	1.406	1.340	19.81	17.50	17.50	16.25
	127,400	7,575	134,975	14,775	17,080	31,855	166,830	2.169	1.610	1.476	1.276	19.00	18.75	18.75	17.50
	79,200	5,402	84,602	2,431	5,874	8,305	92,907	2.438	2.101	1.571	1.348	20.00	18.50	17.00	16.50
	87,380	4,275	91,655	7,939	8,184	16,123	107,778	2.198	1.718	1.446	1.323	20.00	19.00	17.00	16.50
	304,508	8,575	313,083	6,591	19,321	25,912	338,995	1.832	1.565	1.316	1.287	19.87	17.50	18.62	16.25
	356,191	11,467	367,658	23,001	10,966	33,957	401,615	1.583	1.765	1.164	1.059	19.37	18.00	17.00	16.50
	144,960	5,472	150,432	20,456	6,270	26,726	177,158	1.974	1.778	1.220	1.141	20.00	18.00	17.08	16.50
	139,774	6,975	146,749	4,269	4,209	8,578	155,327	2.044	1.556	1.079	0.989	19.37	18.75	16.87	16.25
	72,390	7,368	79,758	1,088	2,805	3,893	83,641	2.125	1.863	1.391	1.328	20.00	17.5		

郡市町村	作付反別(町)						收穫高(石)							
	水		陸		計	計	水		陸		計	計		
	梗米	糯米	梗米	糯米			梗米	糯米	梗米	糯米				
那	46.6	0.6	47.2	112.0	71.6	183.6	230.8	925	11	936	1,372	841	2,213	3,149
東那須野	14.5	0.8	15.3	188.5	91.6	280.1	295.4	213	3	216	2,752	1,216	3,968	4,184
狩野	98.7	4.9	103.6	180.0	72.8	252.8	356.4	1,508	61	1,569	2,070	898	2,968	4,627
西那須野	227.7	5.1	232.8	143.9	68.4	212.3	445.1	4,790	95	4,885	1,652	726	2,378	7,263
高林	55.3	4.1	59.4	25.9	28.0	53.9	113.3	1,131	50	1,181	358	426	784	1,965
須計	11,157.5	663.8	11,821.3	2,202.1	1,981.1	4,183.2	16,004.5	224,761	11,293	236,054	28,865	25,014	53,879	283,933
安	181.7	8.1	189.8	6.7	5.8	12.5	202.3	3,838	150	3,988	14	14	28	4,016
植野	635.1	15.0	710.1	80.8	31.1	111.9	822.0	16,373	326	16,699	188	106	294	16,993
界	52.5	1.1	53.6	107.9	23.4	131.3	184.9	870	10	880	428	74	502	1,382
犬伏	246.4	15.2	261.6	88.1	62.6	150.7	412.3	3,852	258	4,110	432	256	688	4,798
大堀	152.0	7.3	159.3	9.2	19.1	28.3	187.6	3,963	185	4,148	78	157	235	4,383
田沼	299.4	8.9	308.3	94.6	88.3	122.9	431.2	6,306	184	6,490	299	777	1,076	7,566
三好	119.4	2.6	122.0	14.5	18.4	32.9	154.9	2,738	56	2,794	210	251	461	3,255
葛生	169.4	4.1	173.5	11.5	15.5	27.0	200.5	3,436	69	3,505	133	162	295	3,800
常盤	131.8	8.3	140.1	26.0	15.9	41.9	182.0	3,438	194	3,632	413	248	661	4,293
水室	68.1	2.4	70.5	1.7	4.9	6.6	77.1	1,468	47	1,515	28	69	97	1,612
野上	95.1	8.4	103.5	2.2	2.7	4.9	108.4	2,041	170	2,211	25	31	56	2,267
飛駒	66.3	2.9	69.2	6.5	3.1	9.6	78.8	1,645	60	1,705	105	45	151	1,856
新合	118.2	4.9	123.1	14.6	23.6	38.2	161.3	2,936	118	3,054	216	329	545	3,599
赤見	294.7	18.1	312.8	15.1	33.2	48.3	361.1	6,777	370	7,147	155	339	494	7,641
旗川	271.3	16.7	288.0	0.1	2.1	2.2	290.2	7,078	405	7,483	1	23	24	7,507
計	2,961.4	124.0	3,085.4	419.5	349.7	769.2	3,854.6	66,759	2,602	69,361	2,726	2,881	5,607	74,968
足	236.6	14.3	250.9	52.6	13.4	66.0	316.9	4,717	276	4,993	473	117	590	5,583
毛野	359.0	24.5	383.5	7.4	1.6	9.0	392.5	7,619	450	8,069	116	24	140	8,209
富妻	320.8	15.9	336.7	0.6	4.8	5.4	342.1	6,934	307	7,241	9	70	79	7,320
吾北	394.2	30.4	424.6	0.7	2.5	3.2	427.8	9,081	673	9,754	9	31	40	9,794
名草	113.9	7.0	120.9	0.5	3.1	3.6	124.5	2,758	163	2,921	4	36	40	2,961
三山	110.3	4.9	115.2	0.4	0.1	0.5	115.7	2,944	127	3,071	3	3	6	3,077
重前	165.1	11.0	176.1	0.1	—	0.1	176.2	4,337	250	4,587	1	—	1	4,588
三和	164.5	12.3	176.8	0.3	0.4	0.7	177.5	3,909	279	4,188	3	4	7	4,195
三葉	98.1	5.4	103.5	—	—	—	103.5	2,485	133	2,618	—	—	—	2,618
小俣	147.9	9.0	156.9	—	1.5	1.5	158.4	3,508	202	3,710	—	16	16	3,726
菱	66.4	5.8	72.2	0.7	1.5	2.2	74.4	1,833	166	1,999	9	19	28	2,027
梁田	262.6	20.6	283.2	6.8	2.7	9.5	292.7	6,074	433	6,507	52	21	73	6,580
久野	245.8	16.7	262.5	29.7	14.0	43.7	306.2	5,088	325	5,413	224	101	325	5,738
筑波	319.9	27.6	347.5	27.3	9.5	36.8	384.3	6,810	578	7,388	195	71	266	7,654
御厨	270.3	19.4	289.7	18.2	4.2	22.4	312.1	6,341	442	6,783	195	38	233	7,016
山邊	227.9	15.4	243.3	6.9	3.1	10.0	253.3	5,711	365	6,076	75	37	112	6,188
計	3,503.3	240.2	3,743.5	152.2	62.4	214.6	3,958.1	80,149	5,169	85,318	1,358	588	1,946	87,274

價	額(圓)						一段歩收穫高(石)				一石二付價格(圓)			
	水		陸		計	計	水		陸		水		陸	
	梗米	糯米	梗米	糯米			梗米	糯米	梗米	糯米	梗米	糯米	梗米	糯米
18,500	206	18,706	23,145	13,406	36,612	55,318	1.985	1.833	1.225	1.175	20.00	18.75	16.87	16.25
4,047	54	4,101	48,160	19,456	67,616	71,717	1.470	0.375	1.459	1.327	19.00	18.00	17.50	16.00
30,332	1,122	31,454	37,053	15,266	52,319	83,803	1.619	1.225	1.150	1.234	19.00	18.39	17.90	17.00
98,195	1,710	99,905	30,562	11,616	42,178	142,083	2.103	1.862	1.149	1.076	20.50	18.00	18.50	16.00
23,185	925	24,110	5,957	7,029	12,986	37,096	2.045	1.220	1.382	1.521	20.50	18.50	16.64	16.50
4,481,517	204,545	4,686,062	505,046	414,474	919,520	5,605,582	2.014	1.701	1.311	1.263	19.94	18.11	17.50	16.57
77,720	2,813	80,533	249	228	477	81,010	2.112	1.832	0.340	0.241	20.25	18.75	17.75	16.25
335,647	6,194	341,841	3,384	1,802	5,186	347,027	2.355	2.173	0.233	0.341	20.50	19.00	18.00	17.00
17,574	195	17,769	7,276	1,184	8,460	26,229	1.657	0.909	0.397	0.316	20.20	19.50	17.00	16.00
78,003	4,683	82,686	7,184	4,160	11,344	94,030	1.563	1.697	0.490	0.409	20.25	18.15	16.63	16.25
80,726	3,565	84,291	1,413	2,727	4,140	88,431	2.607	2.534	0.848	0.822	20.37	19.24	18.12	17.37
126,120	3,459	129,579	5,233	13,209	18,442	148,021	2.106	2.067	0.864	0.880	20.00	18.80	17.50	17.00
56,129	1,064	57,193	3,675	4,393	8,068	65,261	2.293	2.154	1.448	1.364	20.50	19.00	17.50	17.50
68,651	1,242	69,893	2,421	2,754	5,175	75,068	2.028	1.682	1.158	1.045	19.98	18.00	18.20	17.00
67,901	3,638	71,539	7,744	4,340	12,084	83,623	2.608	2.337	1.588	1.559	19.75	18.75	18.75	17.50
23,360	899	24,259	490	1,187	1,677	31,936	2.156	1.958	1.647	1.408	20.00	19.13	17.50	17.20
42,045	3,366	45,411	438	527	965	46,376	2.148	2.011	1.136	1.111	20.60	19.80	17.50	17.00
32,900	1,200	34,100	1,908	779	2,687	36,787	2.483	2.069	1.621	1.452	20.00	20.00	18.00	17.50
60,570	2,065	62,635	3,780	5,346	9,126	71,761	2.496	2.360	1.414	1.412	20.63	17.50	17.50	16.25
132,152	7,030	139,182	2,790	5,763	8,553	147,735	2.300	2.100	1.000	1.000	19.50	19.00	18.00	17.00
148,638	7,088	155,726	18	368	386	156,112	2.610	2.411	1.000	1.095	21.00	17.50	18.00	16.00
1,354,136	48,501	1,402,637	48,003	48,767	96,770	1,499,407	2.254	2.098	0.650	0.824	20.28	18.64	17.61	16.93
96,699	5,382	102,081	8,278	1,989	10,267	112,348	1.994	1.930	0.899	0.873	20.50	19.50	17.50	17.00
152,380	8,100	160,480	1,972	384	2,356	162,836	2.122	1.837	1.568	1.500	20.00	18.00	17.00	16.00
142,147	6,140	148,287	164	1,295	1,459	149,746	2.161	1.931	1.500	1.458	20.50	20.00	18.22	18.50
188,431	11,778	200,209	149	504	653	200,862	2.304	2.214	1.286	1.240	20.75	17.50	16.56	16.26
55,160	2,934	58,094	70	576	646	58,740	2.421	2.329	0.800	1.161	20.00	18.00	17.50	16.00
61,471	2,383	63,854	57	51	108	63,962	2.669	2.592	0.750	3.000	20.88	18.76	19.00	17.00
91,077	5,000	96,077	19	—	19	96,096	2.627	2.273	1.350	—	21.00	20.00	19.00	—
83,066	5,580	88,646	54	72	126	88,772	2.376	2.268	1.000	1.000	21.25	20.00	18.00	18.00
49,700	2,494	52,194	—	—	—	52,194	2.533	2.463	—	—	20.00	18.75	—	—
70,160	3,788	73,948	—	261	261	74,209	2.372	2.244	—	1.067	20.00	18.75	—	16.31

第四 昭和八年 麥作果

Table with columns for year (年次), crop type (作付反別), and yield (收穫高). Rows include years from 1924 to 1928.

第五 昭和八年 麥作郡

Table showing wheat production by county (郡) in 1928, including 河内郡, 上都賀郡, 芳賀郡, 下都賀郡, 鹽谷郡, 那須郡, 安蘇郡, 足利郡, 宇都宮市, and 足利市.

年比較 (全管)

Table comparing wheat prices and yields across years, with columns for yield (一段歩收穫高), price (價額), and price per stone (一石=付價格).

市別

Table showing wheat production and prices by city (市別) in 1928, including 2.010, 2.048, 2.031, 2.192, 2.214, 2.204, 1.962, 1.960, 1.960, 2.115, 2.735, 2.597, 2.279, 1.863, 1.979, 2.258, 1.984, 1.999, 2.303, 2.666, 2.567, 2.416, 2.605, 2.511, 2.500, 2.607, 2.601, 2.400, 2.501, 2.437.

郡市町村	作付反別(町)							收穫高						
	大麥		稈麥		小麥		合計	大麥		稈麥		小麥		
	田	畑	田	畑	田	畑		田	畑	田	畑	田	畑	
河	横川	181.8	191.2	2.8	1.8	94.2	376.9	778.7	4,545	2,666	42	23	1,507	4,523
	平石	129.0	40.0	6.3	—	107.6	248.8	531.7	2,580	600	88	—	1,291	2,985
	瑞穂野	181.5	43.4	2.0	0.5	121.5	202.7	551.6	3,630	868	32	8	1,944	3,243
	本郷	196.2	41.7	0.5	0.4	71.0	182.0	491.8	3,178	680	10	8	944	2,129
	上三川	184.7	134.4	—	—	19.7	234.7	573.5	3,565	2,862	—	—	296	2,980
	吉田	104.3	112.8	—	—	33.5	110.6	361.2	1,544	1,557	—	—	439	1,416
	薬師寺	30.0	155.0	—	5.0	2.0	185.0	381.0	515	3,844	—	70	20	3,108
	明治	92.7	202.5	—	—	28.0	237.5	560.7	1,390	4,050	—	—	336	3,800
	雀宮	60.1	111.4	0.4	1.6	25.1	277.0	475.6	1,262	2,512	7	27	363	3,884
	委川	29.7	161.2	0.7	3.9	27.5	309.8	532.8	602	3,651	10	57	354	4,098
	城山	15.6	121.9	5.1	3.8	62.5	330.0	538.9	296	2,316	87	65	937	4,950
	國本	7.2	225.1	—	2.1	2.6	358.5	595.5	180	4,502	—	42	36	4,302
	富屋	26.0	53.2	2.7	2.8	8.5	112.1	205.3	489	984	28	29	100	1,121
	大澤	34.8	96.6	—	—	14.7	213.0	359.1	696	1,642	—	—	235	2,982
	豊岡	17.0	60.5	—	—	—	125.3	202.8	442	1,452	—	—	—	2,569
	篠井	32.4	91.6	—	—	25.4	246.6	396.0	648	2,290	—	—	508	2,959
	羽黒	28.2	20.2	—	—	13.2	226.8	288.4	705	464	—	—	217	2,494
	絹島	37.9	6.8	0.5	—	23.2	127.9	196.3	1,153	180	13	—	373	1,637
内	古里	63.8	19.8	0.8	0.2	68.7	240.8	394.1	1,595	450	18	4	1,237	2,288
	田原	42.9	19.4	—	—	32.3	134.3	228.9	997	299	—	—	566	1,279
	豊郷	16.1	103.4	0.4	1.0	4.3	230.1	355.8	376	1,903	5	12	71	3,106
	計	1,511.9	1,942.1	22.2	23.1	786.0	4,710.4	8,999.7	30,389	39,773	340	345	11,774	61,853
上	鹿沼	32.9	25.7	1.7	1.9	34.4	51.3	147.9	871	632	25	34	688	969
	菊澤	68.3	59.5	12.7	7.2	34.5	165.3	347.5	1,710	1,500	247	121	600	2,303
	北犬飼	8.3	163.3	0.5	2.5	15.8	463.1	653.5	139	3,478	7	40	154	6,066
	北押原	59.4	16.4	2.0	4.2	70.9	156.0	308.9	1,079	312	30	63	1,099	2,418
	南押原	171.2	76.5	17.6	—	95.5	158.9	519.7	4,108	1,912	281	—	1,432	2,542
都	西方	112.4	7.2	20.6	2.1	81.4	23.8	247.5	2,248	180	370	42	1,464	476
	眞名子	0.7	55.4	—	3.2	3.8	34.2	97.3	17	1,662	—	51	45	684
	清洲	77.6	9.2	3.6	1.0	31.0	31.5	153.9	1,734	226	60	19	491	490
	永野	17.3	26.0	0.4	0.7	6.2	21.1	71.7	355	728	6	14	78	348
	粕尾	24.8	26.7	—	0.2	13.0	20.2	84.9	459	534	—	3	130	263
賀	栗野	27.0	25.3	5.3	7.3	19.5	30.4	114.8	473	468	77	113	308	502
	南摩	57.3	34.0	3.7	1.0	33.4	36.9	166.3	1,248	730	67	21	541	461
	加蘇	42.8	41.3	1.1	2.2	27.8	51.8	167.0	981	1,015	19	34	479	901
	東大芦	43.8	50.6	0.3	0.5	83.3	80.3	258.8	1,007	1,214	5	9	1,333	1,254

合計	一段歩收穫高(石)						價額(圓)			一石=付價格(圓)		
	大麥		稈麥		小麥		大麥	稈麥	小麥	大麥	稈麥	小麥
	田	畑	田	畑	田	畑						
13,306	2,500	2,200	1,500	1,300	1,600	1,200	49,217	553	94,068	6.83	8.51	15.60
7,544	2,000	1,500	1,397	—	1,200	1,200	23,214	660	63,416	7.30	7.50	16.00
9,725	2,000	2,000	1,600	1,600	1,600	1,600	26,958	280	77,805	6.00	7.00	15.00
6,949	1,620	1,631	2,000	2,000	1,330	1,170	27,006	143	47,632	7.00	7.94	15.50
9,704	1,930	2,130	—	—	1,503	1,270	43,068	—	49,140	6.70	—	15.00
4,956	1,480	1,380	—	—	1,310	1,280	21,087	—	27,640	6.80	—	14.90
7,672	1,717	2,480	—	1,400	1,000	1,680	33,744	770	47,671	7.75	11.00	15.24
9,576	1,499	2,000	—	—	1,200	1,600	38,624	—	64,108	7.10	—	15.50
8,055	2,100	2,255	1,750	1,638	1,446	1,402	26,418	316	63,705	7.00	9.29	15.00
8,773	2,030	2,265	1,429	1,462	1,287	1,323	27,071	508	64,030	6.36	7.58	14.38
8,651	1,897	1,900	1,706	1,711	1,499	1,500	15,672	1,216	82,418	6.00	8.00	14.00
9,062	2,500	2,000	—	2,000	1,385	1,200	32,774	294	69,408	7.00	7.00	16.00
2,751	1,881	1,850	1,037	1,036	1,176	1,000	9,574	427	19,878	6.50	7.49	16.28
5,555	2,000	1,700	—	—	1,599	1,400	15,197	—	48,255	6.50	—	15.00
4,463	2,600	2,400	—	—	—	2,050	13,447	—	37,918	7.10	—	14.76
6,405	2,000	2,500	—	—	2,000	1,200	20,566	—	52,005	7.00	—	15.00
3,880	2,500	2,297	—	—	1,644	1,100	7,598	—	40,665	6.50	—	15.00
3,356	3,042	2,647	2,600	—	1,608	1,280	9,331	137	31,517	7.00	10.54	15.68
5,592	2,500	2,273	2,250	2,000	1,801	950	14,826	194	52,875	7.25	8.82	15.00
3,141	2,324	1,541	—	—	1,752	952	8,449	—	27,831	6.52	—	15.08
5,473	2,335	1,840	1,250	1,210	1,479	1,350	13,674	136	47,655	6.00	8.00	15.00
144,589	2,010	2,048	1,532	1,494	1,498	1,313	477,544	5,634	1,114,540	6.81	8.22	15.14
3,229	2,647	2,459	2,059	1,789	2,000	1,889	9,920	635	24,855	6.60	9.20	15.00
6,481	2,504	2,521	1,945	1,681	1,789	1,393	21,500	3,264	43,170	6.70	8.87	14.87
9,884	1,675	2,130	1,400	1,600	0,975	1,310	21,702	432	93,300	6.00	9.19	15.00
5,001	1,816	1,902	1,500	1,500	1,550	1,550	9,041	837	54,514	6.50	9.00	15.50
10,375	2,400	2,499	1,597	—	1,499	1,600	42,140	2,288	63,584	7.00	8.50	16.00
4,780	2,000	2,500	1,796	2,000	1,799	2,000	17,238	3,649	29,740	7.10	8.85	15.33
2,459	2,429	3,000	—	1,694	1,184	2,000	11,753	484	10,935	7.00	9.49	15.00
3,020	2,235	2,457	1,667	1,900	1,584	1,556	14,112	719	14,715	7.20	9.10	15.00
1,529	2,052	2,800	1,500	2,000	1,258	1,649	7,510	184	6,390	6.93	9.20	15.00
1,389	1,851	2,000	—	1,500	1,000	1,302	5,953	28	5,895	6.00	9.33	15.00
1,941	1,752	1,850	1,453	1,548	1,579	1,651	8,681	1,616	12,150	7.10	8.51	15.00
3,068	2,178	2,147	1,811	2,100	1,620	1,249	12,501	873	15,161	6.32	9.92	15.13
3,429	2,292	2,458	1,727	1,545	1,723	1,739	13,012	493	21,114	6.52	9.30	15.30
4,822	2,299	2,399	1,667	1,800	1,600	1,562	15,325	130	38,805	6.90	9.29	15.00

郡市町村	作付段別(町)								收穫高							
	大麥		稈麥		小麥		合計	大麥		稈麥		小麥				
	田	畑	田	畑	田	畑		田	畑	田	畑	田	畑			
上	西大苜	0.3	43.6	—	—	—	11.9	55.8	6	916	—	—	—	173		
	板荷	8.4	23.0	2.6	1.6	6.0	47.1	88.7	152	488	43	28	83	774		
	小來川	0.3	37.1	—	0.2	—	12.2	49.8	4	615	—	3	—	154		
	落合	7.8	79.3	0.3	4.4	0.2	200.6	292.6	118	1,715	5	71	3	2,979		
都	今市	9.8	87.4	—	0.5	—	105.2	202.9	191	1,662	—	8	—	1,420		
	日光	1.8	47.4	—	0.2	—	39.0	88.4	27	711	—	2	—	468		
	足尾	—	—	—	—	—	0.6	0.6	—	—	—	—	—	5		
賀	計	772.2	934.9	72.4	40.9	556.7	1,741.4	4,118.5	16,927	20,698	1,252	676	8,928	25,650		
芳	眞岡	37.0	108.0	1.6	6.5	47.4	214.8	415.6	869	2,505	28	113	948	4,403		
	大内	79.8	131.1	10.5	9.6	29.2	347.1	607.3	1,445	2,524	152	148	380	4,269		
	中	116.4	175.0	3.2	3.3	35.9	360.8	694.6	2,096	2,975	48	40	431	4,330		
	長沼	97.0	74.5	0.8	1.1	34.1	90.6	298.1	1,843	1,490	14	21	409	1,178		
	久下田	23.6	62.7	—	—	15.8	112.0	214.1	590	1,567	—	—	316	2,240		
	物部	92.7	109.1	1.1	0.6	77.1	186.8	467.4	1,854	2,509	22	14	1,388	3,736		
	山前	20.0	224.0	—	20.0	70.0	308.0	642.0	300	3,360	—	280	910	4,004		
	田野	12.3	118.2	—	21.5	10.5	204.1	366.6	264	2,270	—	410	149	3,016		
	益子	19.0	140.3	2.9	22.4	12.4	257.8	454.8	342	2,806	32	336	149	3,609		
	七井	12.0	110.5	1.5	4.5	2.0	247.5	378.0	232	2,144	21	63	27	3,416		
	逆川	3.1	109.8	0.2	12.2	0.3	153.2	278.8	39	1,537	2	173	4	2,586		
	茂木	1.2	80.1	—	2.0	0.3	117.2	200.8	22	1,682	—	22	3	1,406		
	中川	0.7	194.2	—	23.1	—	335.6	553.6	11	3,848	—	279	—	4,152		
	須藤	1.0	126.8	—	2.7	—	191.9	322.4	15	2,510	—	41	—	2,500		
	小貝	0.2	129.0	—	12.1	—	236.0	377.3	3	2,987	—	136	—	3,074		
	市羽	15.5	180.0	0.8	13.0	5.0	320.5	534.8	340	3,600	10	160	65	3,846		
	祖母井	34.2	82.0	2.3	3.8	23.0	162.4	307.7	787	1,779	45	68	391	2,339		
賀	南高根	17.5	162.4	—	2.1	38.7	212.9	433.6	395	3,589	—	35	487	2,597		
	水橋	52.0	50.1	11.1	13.5	23.2	237.1	387.0	776	679	164	171	260	2,980		
	清原	54.8	118.2	7.8	20.6	38.2	878.2	1,117.8	1,315	2,364	140	330	688	10,099		
	計	690.0	2,483.0	43.8	194.6	463.1	1,517.5	9,052.3	13,538	48,725	678	2,840	7,005	69,780		
下	栃木	189.0	82.3	4.6	2.3	62.0	41.9	382.1	5,080	2,321	78	40	1,060	733		
	大宮	85.0	132.0	—	6.1	15.2	79.3	317.6	2,210	4,092	—	122	243	1,589		
	國府	42.8	219.3	—	3.0	38.2	158.6	461.9	1,269	7,675	—	72	840	3,806		
	壬生	76.9	196.8	0.1	0.7	22.0	200.7	497.2	1,922	6,396	1	11	352	4,415		
	稻葉	150.0	199.0	—	6.0	42.0	330.0	727.0	2,700	5,370	—	66	504	6,600		
	南犬飼	28.5	266.2	—	9.3	11.8	518.1	833.9	698	7,166	—	140	153	7,772		
賀	麥	50.5	182.0	—	6.5	17.0	289.7	545.7	1,162	4,732	—	117	225	4,925		

合計	一段歩收穫高(石)						價額(圓)			一石=付價格(圓)		
	大麥		稈麥		小麥		大麥	稈麥	小麥	大麥	稈麥	小麥
	田	畑	田	畑	田	畑						
1,095	2.000	2.101	—	—	—	1.454	5,532	—	2,595	6.00	—	15.00
1,568	1.810	2.122	1.654	1.750	1.383	1.643	4,730	665	12,923	7.39	9.37	15.08
776	1.333	1.658	—	1.500	—	1.262	3,714	18	2,002	6.00	6.00	13.00
4,891	1.513	2.163	1.666	1.614	1.500	1.485	12,831	713	44,730	7.00	9.38	15.00
3,281	1.949	1.902	—	1.600	—	1.350	12,600	52	22,081	6.80	6.50	15.55
1,208	1.500	1.500	—	1.000	—	1.200	4,649	18	7,160	6.30	9.00	15.30
5	—	—	—	—	—	0.833	—	—	75	—	—	15.00
114,131	2.192	2.214	1.727	1.653	1.604	1.473	252,449	17,198	525,894	6.71	8.92	15.21
8,872	2.349	2.319	1.750	1.738	2.000	2.050	20,244	1,297	80,265	6.00	9.20	15.00
8,918	1.811	1.925	1.448	1.542	1.301	1.230	26,195	2,550	69,735	6.60	8.50	15.00
9,920	1.801	1.700	1.500	1.212	1.201	1.200	35,497	792	71,415	7.00	9.00	15.00
4,955	1.900	2.000	1.750	1.909	1.199	1.300	20,998	227	25,392	6.20	6.49	16.00
4,713	2.500	2.499	—	—	2.000	2.000	15,103	—	42,174	7.00	—	16.50
9,523	2.000	2.300	2.000	2.323	1.800	2.000	28,360	288	79,422	6.50	8.00	15.50
8,854	1.500	1.500	—	1.400	1.300	1.300	21,960	2,100	73,710	6.00	7.50	15.00
6,109	2.146	1.920	—	1.907	1.419	1.478	17,231	3,116	54,438	6.80	7.60	17.20
7,274	1.800	2.000	1.103	1.500	1.202	1.400	18,888	2,576	56,370	6.00	7.00	15.00
5,903	1.933	1.940	1.400	1.400	1.350	1.380	15,444	630	51,645	6.50	7.50	15.00
4,341	1.258	1.400	1.000	1.418	1.333	1.688	11,032	1,400	42,088	7.00	8.00	16.25
3,135	1.833	2.100	—	1.100	1.000	1.200	10,905	211	21,135	6.40	9.59	15.00
8,290	1.571	1.981	—	1.208	—	1.237	25,084	2,232	62,280	6.50	8.00	15.00
5,066	1.500	1.979	—	1.519	—	1.303	16,413	332	37,500	6.50	8.10	15.00
6,200	1.500	2.316	—	1.124	—	1.303	24,219	1,206	47,432	8.10	8.87	15.43
8,021	2.194	2.000	1.250	1.231	1.300	1.200	22,852	1,190	58,665	5.80	7.00	15.00
5,409	2.301	2.170	1.957	1.789	1.700	1.440	16,679	941	40,950	6.50	8.33	15.00
7,103	2.257	2.210	—	1.667	1.258	1.220	27,091	245	44,748	6.80	7.00	14.51
5,030	1.492	1.355	1.477	1.267	1.121	1.257	9,967	2,379	52,650	6.85	7.10	16.25
14,936	2.400	2.000	1.795	1.602	1.801	1.150	25,753	3,760	177,936	7.00	8.00	16.50
142,572	1.962	1.960	1.548	1.459	1.513	1.349	409,915	27,472	1,189,950	6.58	7.81	15.50
9,312	2.688	2.820	1.696	1.739	1.710	1.749	53,287	1,204	27,074	7.20	10.20	15.10
8,253	2.600	3.100	—	1.000	1.599	2.000	46,005	1,305	29,264	7.30	10.70	16.00
13,662	2.965	3.500	—	2.400	2.199	2.400	62,608	720	69,690	7.00	10.00	15.00
13,097	2.499	3.250	1.200	1.571	1.600	2.200	58,226	114	74,842	7.00	9.50	15.70
15,240	1.800	2.698	—	1.100	1.200	2.000	56,490	660	108,691	7.00	10.00	15.39
15,929	2.449	2.692	—	1.505	1.297	1.500	53,554	1,330	123,075	6.81	9.50	15.53
11,161	2.301	2.600	—	1.800	1.324	1.700	42,437	1,112	79,825	7.20	9.50	15.50

郡市町村	作付段別(町)						合計	收穫高						
	大麥		稈麥		小麥			大麥		稈麥		小麥		
	田	畑	田	畑	田	畑		田	畑	田	畑	田	畑	
石橋	30.2	98.8	—	—	11.2	170.2	310.4	709	2,489	—	—	137	2,297	
國分寺	30.0	235.5	—	3.0	35.5	403.5	707.5	600	5,888	—	60	469	6,456	
桑	18.7	234.0	—	5.7	6.1	344.2	608.7	468	5,850	—	114	98	5,507	
絹	152.0	76.0	—	—	178.1	130.3	526.4	1,672	988	—	—	1,781	1,433	
小山	0.8	338.9	—	—	1.3	124.5	465.5	8	6,199	—	—	16	2,515	
大谷	2.9	475.4	—	1.6	0.6	357.2	837.7	64	12,836	—	32	9	5,358	
間々田	—	275.3	—	1.5	—	222.3	499.1	—	7,378	—	36	—	3,712	
野木	—	351.6	—	0.9	—	296.0	648.5	—	9,845	—	15	—	5,032	
生井	0.3	71.4	—	0.5	7.5	42.5	122.2	9	2,142	—	9	135	850	
寒川	21.0	96.0	—	—	23.0	10.0	150.0	252	2,152	—	—	152	100	
穂積	47.2	71.2	0.7	0.9	20.9	25.6	165.5	944	1,495	13	18	459	537	
豊田	71.0	168.0	1.2	4.9	76.0	52.7	374.0	1,420	3,696	20	93	1,444	1,110	
中	77.9	50.2	1.2	—	42.1	17.1	188.5	1,135	818	19	—	493	217	
瑞穂	104.3	58.4	0.3	0.1	48.3	31.8	243.2	2,732	1,626	5	2	841	623	
水代	88.2	225.4	—	—	35.1	76.5	425.2	2,205	5,635	—	—	526	1,147	
部屋	5.7	176.4	0.6	0.3	10.1	87.0	280.1	96	4,924	11	6	132	1,560	
藤岡	—	149.3	—	—	—	117.4	266.7	—	4,479	—	—	—	2,348	
赤麻	—	161.0	—	—	—	143.5	304.5	—	5,877	—	—	—	3,660	
三鳴	—	171.5	—	—	—	169.5	341.0	—	6,002	—	—	—	4,237	
岩舟	0.1	176.9	—	0.2	0.1	147.2	324.5	2	5,116	—	4	1	2,752	
小野寺	30.0	125.4	—	—	27.5	50.2	233.1	750	4,138	—	—	495	1,255	
富山	20.6	187.5	—	1.5	21.5	102.5	333.6	525	5,250	—	38	365	1,774	
靜和	—	220.6	—	—	—	152.4	373.0	—	5,515	—	—	—	2,134	
皆川	57.7	105.1	24.1	26.8	40.8	56.9	311.4	1,214	3,416	204	435	742	1,029	
吹上	55.8	147.0	10.5	30.5	42.2	95.8	381.8	1,060	5,880	189	762	633	2,012	
寺尾	100.0	48.0	8.0	10.0	35.0	27.0	228.0	2,200	1,200	128	180	525	459	
赤津	84.0	52.3	8.2	4.7	44.8	118.2	312.2	1,422	1,464	124	69	767	1,990	
家中	75.3	94.2	20.6	37.4	45.8	89.8	363.1	1,355	2,826	288	748	733	2,155	
計	1,636.4	5,918.9	80.1	164.4	951.7	5,230.3	14,101.8	35,833	131,876	1,080	3,189	14,331	94,096	
鹽	矢板	36.7	133.8	—	—	15.3	262.4	448.2	1,009	3,385	—	—	229	4,075
	泉	8.0	63.9	—	—	32.0	168.5	277.4	144	1,240	—	—	480	2,527
	碓根	4.5	83.2	—	—	2.5	142.7	337.9	72	1,411	—	—	24	2,330
	鹽原	—	17.0	—	—	—	47.5	64.5	—	235	—	—	—	447
	三依	—	20.5	—	—	—	13.8	34.3	—	164	—	—	—	110
	栗山	—	76.0	—	—	—	25.0	101.0	—	760	—	—	—	220
	藤原	—	66.7	—	—	—	54.7	121.4	—	1,329	—	—	—	613

郡市町村	合計	一段步收穫高(石)						價額(圓)			一石=付價格(圓)		
		大麥		稈麥		小麥		大麥	稈麥	小麥	大麥	稈麥	小麥
		田	畑	田	畑	田	畑						
石橋	5,632	2,348	2,519	—	—	1,223	1,350	20,787	—	37,970	6.50	—	15.60
國分寺	13,473	2,000	2,500	—	2,000	1,321	1,600	45,416	564	103,875	7.00	9.40	15.00
桑	12,037	2,503	2,500	—	2,000	1,607	1,600	44,226	1,083	84,075	7.00	9.50	15.00
絹	5,874	1,100	2,300	—	—	1,000	1,100	17,290	—	49,013	6.50	—	15.25
小山	8,738	1,000	1,829	—	—	1,231	2,020	43,449	—	39,534	7.00	—	15.62
大谷	18,299	2,200	2,700	—	2,000	1,500	1,500	90,300	256	83,189	7.00	8.00	15.50
間々田	11,126	—	2,630	—	2,400	—	1,670	54,966	342	56,612	7.45	9.50	15.25
野木	14,892	—	2,800	—	1,667	—	1,700	66,946	147	77,493	6.85	9.80	15.40
生井	3,145	3,000	3,000	—	1,800	1,800	2,000	15,057	90	14,775	7.00	100.00	15.00
寒川	1,656	1,200	1,200	—	—	0,661	1,000	9,828	—	3,780	7.00	—	15.00
穂積	3,466	2,000	2,100	1,900	2,000	2,200	2,100	17,317	279	14,865	7.10	90.00	15.00
豊田	7,783	2,000	2,200	1,667	1,898	1,900	2,098	35,812	1,017	38,310	7.00	9.00	15.00
中	2,682	1,457	1,629	1,583	—	1,171	1,269	13,671	200	11,502	7.00	10.53	16.20
瑞穂	5,829	2,619	2,784	1,667	—	1,741	1,959	30,506	70	21,960	7.00	10.00	15.00
水代	9,513	2,500	2,500	—	—	1,499	1,499	56,448	—	25,802	7.20	—	15.42
部屋	6,730	1,684	2,791	1,833	2,000	1,317	1,792	34,173	139	26,001	6.81	8.18	15.36
藤岡	6,827	—	3,000	—	—	—	2,000	33,592	—	36,394	7.50	—	15.50
赤麻	9,537	—	3,650	—	—	—	2,551	42,314	—	56,730	7.20	—	15.50
三鳴	10,239	—	3,500	—	—	—	2,500	39,013	—	67,792	6.50	—	16.00
岩舟	7,875	2,000	2,892	—	2,000	1,000	1,870	36,338	38	41,295	7.10	95.00	15.00
小野寺	6,638	2,500	3,300	—	—	1,800	2,500	31,772	—	28,000	6.50	—	16.00
富山	7,952	2,549	2,800	—	2,533	1,698	1,731	40,310	379	32,834	6.98	9.97	15.35
靜和	7,649	—	2,500	—	—	—	1,400	37,171	—	34,891	6.74	—	16.35
皆川	7,040	2,104	3,250	0,846	1,623	1,819	1,808	32,410	5,879	27,450	7.00	9.20	15.50
吹上	10,536	1,900	3,000	1,800	2,500	1,500	2,100	48,580	8,559	40,998	7.00	9.00	15.50
寺尾	4,692	2,200	2,500	1,600	1,800	1,500	1,700	24,480	2,926	14,760	7.20	9.53	15.00
赤津	5,836	1,693	2,799	1,512	1,468	1,712	1,684	21,068	2,059	43,754	7.30	10.67	15.87
家中	8,105	1,799	3,000	1,398	2,000	1,600	2,400	29,267	10,360	43,320	7.00	10.00	15.00
計	310,455	2,415	2,735	1,348	1,940	1,490	1,782	1,385,113	40,832	1,639,435	7.00	9.56	15.40
鹽	8,698	2,750	2,530	—	—	1,497	1,553	32,076	—	64,560	7.30	—	15.00
	4,391	1,800	1,800	—	—	1,500	1,500	8,996	—	45,105	6.50	—	15.00
	3,837	1,600	1,600	—	—	0,960	0,960	8,453	—	35,310	5.70	—	15.00
	682	—	1,330	—	—	—	0,941	1,410	—	6,705	6.00	—	15.00
	274	—	0,800	—	—	—	0,797	1,148	—	1,650	7.00	—	15.00
	990	—	1,000	—	—	—	0,880	4,940	—	3,080	6.50	—	14.00
	1,952	—	2,007	—	—	—	1,121	9,373	—	9,195	7.00	—	15.00

郡市町村	作付段別(町)							收穫高						
	大麥		稈麥		小麥		合計	大麥		稈麥		小麥		
	田	畑	田	畑	田	畑		田	畑	田	畑	田	畑	
鹽	船生	30.6	45.2	—	—	6.2	175.8	257.3	842	1,243	—	—	115	3,243
	玉生	10.0	50.0	—	—	10.1	107.0	177.1	200	1,000	—	—	101	1,284
	大宮	12.0	24.1	—	—	17.5	103.7	157.3	252	482	—	—	282	1,504
	氏家	50.0	10.8	0.5	0.4	44.8	132.9	239.4	1,300	162	9	6	773	997
	阿久津	47.9	12.7	—	0.7	25.1	190.0	276.4	1,077	266	—	7	251	1,425
	北高根	71.3	85.2	—	—	48.9	331.8	537.2	1,204	1,323	—	—	629	3,952
	深熟田	21.0	9.3	4.2	—	32.3	155.5	222.3	567	195	67	—	388	1,555
	喜連川	32.4	104.8	0.5	3.2	25.6	197.3	363.8	745	2,201	8	48	410	2,368
	片岡	2.5	43.5	—	2.4	2.1	200.1	250.6	38	566	—	26	29	2,201
谷	計	326.9	856.7	5.2	6.7	262.4	2,408.2	3,836.1	7,450	15,972	84	87	3,711	28,851
那	大田原	12.4	54.4	—	1.2	14.8	153.4	241.2	347	1,414	—	30	266	2,296
	親園	30.0	6.0	—	0.5	50.0	147.0	233.5	750	140	—	10	950	1,617
	野崎	14.8	37.9	—	0.8	28.2	259.1	340.8	266	644	—	8	338	2,850
	佐久山	6.8	44.1	2.7	2.0	0.5	119.7	175.8	190	1,119	41	28	8	1,556
	上江川	2.5	63.0	—	3.1	1.5	336.0	406.1	50	1,386	—	62	18	4,368
	下江川	1.6	149.7	0.4	4.2	0.3	466.4	622.6	33	2,978	6	61	3	4,735
	荒川	7.6	124.5	—	46.0	0.4	395.0	573.5	184	3,013	—	828	8	6,090
	向田	—	115.0	—	9.2	8.6	122.7	255.5	—	1,725	—	129	155	2,209
	境	1.5	230.5	—	12.5	3.5	150.6	398.6	15	4,495	—	162	35	2,108
	烏山	2.0	22.0	—	8.0	4.0	36.1	72.1	24	246	—	78	50	475
	七合	1.3	194.6	—	20.2	—	297.5	513.6	26	3,892	—	283	—	4,165
	武茂	1.3	94.0	0.4	1.0	1.1	89.2	187.0	21	2,025	6	16	13	1,286
	馬頭	3.1	312.6	—	—	0.1	212.0	527.8	58	6,252	—	—	1	3,032
	大内	—	112.0	—	—	2.0	115.0	229.0	—	1,792	—	—	18	1,104
	大山田	7.0	135.3	—	—	5.2	124.3	271.8	147	2,977	—	—	65	1,492
	那珂	5.7	82.1	2.5	10.8	13.5	221.8	336.4	109	1,330	43	146	178	2,355
	湯津上	22.7	30.3	0.7	1.0	18.4	338.2	411.3	570	672	11	16	460	6,280
	川西	11.5	28.2	—	—	14.1	190.7	244.5	280	466	—	—	245	2,121
	黒羽	3.0	82.0	—	—	7.0	210.0	302.0	61	1,782	—	—	139	1,853
	須賀川	18.0	84.0	—	—	6.0	48.0	156.0	360	1,890	—	—	96	768
	兩郷	7.4	56.0	0.2	1.3	20.5	154.1	239.5	148	1,069	3	16	304	1,482
	伊玉野	14.8	56.4	—	3.9	2.3	141.8	219.2	320	1,118	—	49	32	1,362
須	芹野	6.8	30.5	—	—	3.0	84.4	124.7	136	550	—	—	40	928
	那須	—	500.0	—	—	—	750.0	1,250.0	—	6,000	—	—	—	9,375
	鍋掛	1.0	47.0	0.2	1.0	—	195.0	244.2	20	470	2	10	—	1,852
	金田	4.5	109.7	—	0.8	29.9	659.8	804.7	115	2,742	—	12	538	9,237

(石)	一段歩收穫高(石)						價額(圓)			一石=付價格(圓)			
	大麥		稈麥		小麥		大麥	稈麥	小麥	大麥	稈麥	小麥	
	田	畑	田	畑	田	畑							
合計	5,443	2,752	2,750	—	—	1,855	1,850	13,970	—	50,370	6.70	—	15.00
	2,585	2,000	2,000	—	—	1,000	1,200	8,400	—	20,775	7.00	—	15.00
	2,520	2,100	2,000	—	—	1,611	1,450	5,138	—	25,897	7.00	—	14.50
	3,247	2,600	1,500	1,800	1,500	1,725	0,750	9,392	135	26,550	6.42	9.00	15.00
	3,026	2,248	2,094	—	1,000	1,000	0,750	8,058	63	25,140	6.00	9.00	15.00
	7,108	1,689	1,553	—	—	1,286	1,191	16,426	—	68,715	6.50	—	15.00
	2,772	2,700	2,097	1,590	—	1,201	1,000	4,572	670	30,117	6.00	10.00	15.50
	5,780	2,299	2,100	1,600	1,500	1,602	1,200	20,622	448	41,670	7.00	8.00	15.00
	2,860	1,520	1,301	—	1,083	1,381	1,100	3,926	234	33,450	6.50	9.00	15.00
	56,155	2,279	1,863	1,615	1,299	1,414	1,198	156,900	1,550	488,289	6.70	9.06	15.00
	4,353	2,800	2,600	—	2,500	1,797	1,450	13,207	225	38,430	7.50	7.50	15.00
	3,467	2,500	2,333	—	2,000	1,900	1,100	5,340	100	38,505	6.00	10.00	15.00
	4,106	1,797	1,699	—	1,000	1,199	1,100	6,370	64	41,444	7.00	8.00	13.00
	2,942	2,797	2,539	1,526	1,389	1,500	1,300	8,770	690	25,024	6.70	10.00	16.00
	5,884	2,000	2,200	—	2,000	1,200	1,300	8,616	527	64,913	6.00	8.50	14.80
	7,816	2,063	1,989	1,500	1,452	1,000	1,015	20,174	503	75,239	6.70	7.50	15.88
	10,123	2,421	2,420	—	1,800	2,000	1,542	20,780	5,713	95,129	6.50	6.90	15.60
	4,218	—	1,500	—	1,402	1,800	1,800	13,800	1,161	35,470	8.00	9.00	15.00
	6,815	1,000	1,950	—	1,296	1,000	1,400	37,771	1,360	33,752	8.38	8.40	15.75
	873	1,200	1,118	—	0,975	1,250	1,316	1,890	749	7,875	7.00	9.75	15.00
	8,366	2,000	2,000	—	1,400	—	1,400	25,467	226	62,475	6.50	7.99	15.00
	3,367	1,615	2,154	1,500	1,600	1,182	1,442	12,276	165	19,160	6.00	7.50	14.75
	9,343	1,871	2,000	—	—	1,000	1,430	37,860	—	42,462	6.00	—	14.00
	2,914	—	1,600	—	—	0,900	0,960	10,752	—	16,830	6.00	—	15.00
	4,681	2,100	2,200	—	—	1,250	1,200	18,744	—	21,798	6.00	—	14.00
	4,161	1,912	1,620	1,720	1,352	1,319	1,062	9,066	1,348	36,475	6.30	7.13	14.40
	8,009	2,511	2,218	1,571	1,600	2,500	1,857	9,315	224	101,100	7.50	8.30	15.00
	3,112	2,435	1,652	—	—	1,738	1,112	4,476	—	35,490	6.00	—	15.00
	3,835	2,033	2,173	—	—	1,986	0,882	11,058	—	29,880	6.00	—	15.00
	2,114	2,000	2,250	—	—	1,600	1,600	15,750	—	12,960	7.00	—	15.00
	3,022	2,000	1,909	1,500	1,231	1,482	0,962	7,399	178	26,790	6.08	9.37	15.00
	2,581	2,162	1,982	—	1,256	1,391	0,961	11,504	441	20,910	8.00	9.00	15.00
	1,654	2,000	1,803	—	—	1,333	1,100	4,459	—	13,552	6.50	—	14.00
	18,375	—	1,800	—	—	—	1,250	54,000	—	126,563	6.00	—	13.50
	2,354	2,000	1,000	1,000	1,000	—	0,950	3,038	108	27,965	6.20	9.00	15.10
	12,644	2,556	2,500	—	1,500	1,799	1,400	15,713	864	147,525	5.50	7.20	15.09

郡市町村	作付段別(町)							收穫高						
	大麥		稈麥		小麥		合計	大麥		稈麥		小麥		
	田	畑	田	畑	田	畑		田	畑	田	畑	田	畑	
那	—	67.1	—	—	—	183.8	250.9	—	1,510	—	—	—	2,389	
黑磯	—	67.1	—	—	—	183.8	250.9	—	1,510	—	—	—	2,389	
東那須野	0.2	151.2	—	—	—	419.9 ^{△0.7}	572.0	4	3,032	—	—	—	4,619 ^{△14}	
狩野	1.9	107.1	—	0.3	—	327.8	437.1	38	2,257	—	4	—	4,176	
西那須野	4.7	43.1	—	—	—	182.8	230.6	110	871	—	—	—	2,047	
高林	—	225.0	—	—	—	330.0	555.0	—	4,500	—	—	—	3,300	
須計	194.1	3,395.3	7.1	127.8	234.9	7,467.1 ^{△0.7}	11,427.0	4,382	67,357	112	1,948	3,950	93,527 ^{△14}	
安	佐野	39.0	14.0	—	—	45.0	26.0	124.0	1,092	420	—	—	765	468
野	14.9	164.2	—	—	75.6	60.0	314.7	417	4,926	—	—	1,436	1,260	
界	—	142.6	—	—	—	63.7	211.3	—	3,993	—	—	—	1,443	
犬伏	4.2	147.8	—	1.9	25.6	221.1	400.6	116	4,508	—	44	461	4,090	
堀米	39.2	36.1	—	0.3	67.0	67.0	209.6	627	974	—	3	837	1,139	
田沼	56.2	395.7	0.9	2.6	175.8	302.2	933.4	1,293	10,654	18	62	2,461	5,137	
三好	29.0	79.5	—	—	47.8	65.9	222.2	646	1,949	—	—	672	1,135	
葛盤	55.7	110.7	—	—	48.7	115.0	330.1	1,366	2,514	—	—	1,120	2,588	
菅室	44.2	49.2	—	0.9	30.4	49.3	174.0	1,017	1,255	—	17	487	745	
水盤	27.8	39.3	—	—	6.2	12.4	85.7	516	333	—	—	80	176	
野上	24.4	27.5	1.6	1.4	22.8	23.5	101.2	476	520	32	29	307	360	
飛駒	11.2	30.0	0.7	1.9	7.8	46.3	97.9	178	692	10	37	112	615	
新合	32.7	109.4	—	—	25.8	86.2	254.1	719	2,720	—	—	387	1,333	
赤見	84.0	113.1	—	0.5	123.0	123.4	444.0	1,751	2,333	—	9	1,779	2,033	
旗川	87.7	19.2	—	0.3	141.2	12.8	261.2	2,456	538	—	5	2,324	256	
蘇計	550.2	1,478.3	3.2	9.8	842.7	1,279.8	4,164.0	12,570	39,493	60	206	13,728	22,823	
足	毛野	20.6	141.8	—	—	132.6	46.4	342.4	412	3,729	—	—	2,138	835
富田	66.2	24.2	—	0.4	175.2	25.9	301.9	1,556	605	—	6	3,329	718	
吾妻	15.4	8.3	—	—	143.6	6.1	173.4	380	231	—	—	1,982	114	
北郷	57.3	36.3	0.6	—	92.6	25.5	212.3	1,261	802	10	—	1,528	428	
名草	12.6	27.7	—	—	41.0	42.3	123.6	214	498	—	—	492	465	
三山	27.0	10.0	0.5	—	61.5	7.0	106.0	756	280	15	—	984	112	
重前	50.2	0.8	0.2	—	94.5	4.9	150.6	1,446	18	3	—	1,635	76	
三葉	48.7	31.3	—	—	103.4	22.2	205.6	1,218	696	—	—	2,039	366	
小葉	30.4	1.0	—	—	55.8	1.8	89.0	939	25	—	—	1,322	39	
鹿俣	20.3	7.2	—	—	95.3	11.5	134.3	315	85	—	—	1,220	121	
菱	15.0	8.1	—	—	30.5	17.9	71.5	377	159	—	—	506	249	
久野	22.8	19.2	—	—	204.8	12.8	259.6	602	565	—	—	3,174	249	
筑波	30.5	60.4	—	—	204.6	5.0	336.5	763	2,114	—	—	3,970	100	
御山	20.0	94.0	—	—	301.0	41.0	456.0	320	2,397	—	—	3,913	636	
利	21.3	18.8	—	—	165.5	20.5	226.1	616	589	—	—	2,864	341	
山邊	37.6	11.5	—	—	171.4	19.2	239.7	808	247	—	—	2,742	288	
利計	495.9	500.6	1.3	0.4	2,110.3	320.0	3,428.5	11,983	13,040	28	6	33,888	5,137	

(石)	一段歩收穫高(石)						價額(圓)			一石=付價格(圓)		
	大麥		稈麥		小麥		大麥	稈麥	小麥	大麥	稈麥	小麥
	田	畑	田	畑	田	畑						
合計	—	—	—	—	—	—	—	—	—	—	—	—
3,599	—	2,250	—	—	—	1,300	10,570	—	26,480	7.00	—	15.27
7,669	2,000	2,005	—	—	—	1,100	18,216	—	64,666	6.00	—	14.00
6,475	2,000	2,107	—	1,333	—	1,274 ^{△2,000}	13,770	28	62,640 ^{△84}	6.00	7.00	15.00 ^{△6.00}
3,028	2,340	2,020	—	—	—	1,120	5,886	—	30,705	6.00	—	15.00
7,800	—	2,000	—	—	—	1,000	27,000	—	49,500	6.00	—	15.00
171,300	2,258	1,984	1,577	1,524	1,686	1,253 ^{△2,000}	463,037	14,674	1,441,707 ^{△81}	6.45	7.13	14.79 ^{△6.00}
2,745	2,800	3,000	—	—	1,700	1,800	10,735	—	18,926	7.10	—	15.35
8,039	2,799	2,998	—	—	1,899	2,100	37,401	—	42,462	7.00	—	15.75
5,436	—	2,800	—	—	—	2,100	25,955	—	23,810	6.50	—	16.50
9,219	2,762	2,050	—	2,316	1,800	1,850	32,368	418	69,403	7.00	9.50	15.25
3,580	1,599	2,698	—	1,000	1,249	1,700	11,207	24	31,122	7.00	8.00	15.75
19,655	2,301	2,700	2,000	2,385	1,400	1,700	83,839	624	113,970	7.00	7.80	15.00
4,402	2,228	2,452	—	—	1,406	1,722	18,165	—	27,105	7.00	—	15.00
7,588	2,452	2,271	—	—	2,300	2,250	26,772	—	56,547	6.90	—	15.25
3,521	2,301	2,551	—	1,889	1,602	1,511	13,632	153	19,096	6.00	9.00	15.50
1,655	1,856	2,247	—	—	1,290	1,419	9,094	—	3,840	6.50	—	15.00
1,724	1,951	1,891	2,000	2,071	1,346	1,532	7,280	597	9,583	7.31	9.79	14.37
1,644	1,589	2,307	1,429	1,947	1,436	1,328	6,090	470	10,905	7.00	10.00	15.00
5,209	2,199	2,486	—	—	1,500	1,604	24,073	—	28,320	7.00	—	16.00
8,405	2,085	2,505	—	1,800	1,446	1,647	31,103	72	58,846	6.79	8.00	15.44
6,079	2,800	2,802	—	1,667	2,000	2,000	20,958	50	44,660	7.00	10.00	14.50
88,901	2,303	2,966	1,875	2,102	1,629	1,784	358,672	2,408	558,595	6.89	9.05	15.28
7,114	2,000	2,630	—	—	1,600	1,800	28,987	—	47,568	7.00	—	16.00
6,214	2,350	2,500	—	1,500	1,900	2,000	15,127	57	60,705	7.00	9.50	15.00
2,707	2,468	2,783	—	—	1,380	1,869	4,436	—	33,955	7.26	—	16.23
4,029	2,201	2,209	1,667	—	1,650	1,678	13,410	94	30,572	6.50	9.38	15.60
1,669	1,698	1,798	—	—	1,200	1,099	5,340	—	14,355	7.50	—	15.00
2,147	2,800	2,800	3,000	—	1,600	1,600	7,459	135	17,350	7.20	9.00	15.83
3,178	2,880	2,250	1,500	—	1,730	1,551	10,834	30	27,376	7.40	10.00	16.00
4,369	2,501	2,224	—	—	2,020	1,649	14,355	—	38,053	7.50	—	15.50
2,325	3,089	2,500	—	—	2,369	2,167	6,979	—	21,477	7.24	—	15.73
1,741	1,552	1,181	—	—	1,280	1,052	2,800	—	21,041	7.00	—	15.69
1,291	2,513	1,963	—	—	1,659	1,391	3,634	—	11,574	6.78	—	15.33
4,590	2,640	2,943	—	—	1,550	1,945	8,169	—	51,345	7.00	—	15.00
6,947	2,502	3,500	—	—	1,650	1,000	20,140	—	66,140	7.00	—	16.25
7,266	1,600	2,550	—	—	1,300	1,551	16,845	—	68,235	6.20	—	15.00
4,410	2,892	3,133	—	—	1,731	1,663	9,038	—	48,716	7.50	—	15.20
4,085	2,149	2,148	—	—	1,600	1,500	7,068	—	45,450	6.70	—	15.00
64,082	2,416	2,605	2,154	15.00	1,606	1,605	174,621	316	603,912	6.98	9.29	15.48

昭和九年九月十五日印刷

昭和九年九月二十日發行

栃 木 縣

宇都宮市旭町二ノ三、四三三

印刷者 秋山錦次郎

宇都宮市旭町二ノ三、四三三

印刷所 株式會社 三共社印刷所

14. 2口-219



1200501167943

14.2口

219

終