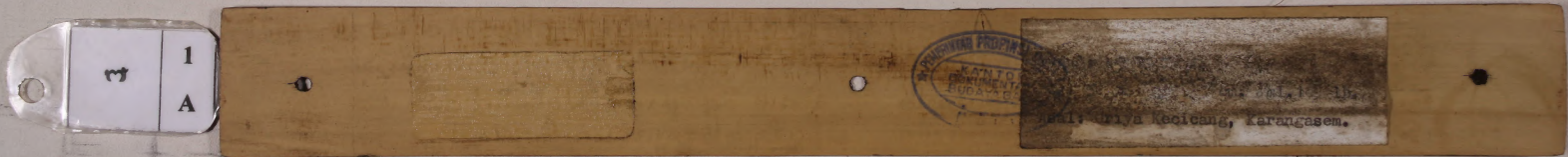


USADHA DEWA
Pusat Dokumentasi
Dinas Kebudayaan Provinsi Bali ~ Indonesia



USADHA DEWA
 Pusat Dokumentasi
 Dinas Kebudayaan Provinsi Bali ~ Indonesia

1
 B


 ...
 ...
 ...
 ...
 ...

2
 A

...
 ...
 ...
 ...
 ...

USADHA DEWA
 Pusat Dokumentasi
 Dinas Kebudayaan Provinsi Bali ~ Indonesia

2
B

43
 002
 പി. പി. || തൃപി തൃപ്തം || ൧ || പാപം പാപം || പാപം പാപം ||
 പാപം പാപം || പാപം പാപം || പാപം പാപം || പാപം പാപം ||
 പാപം പാപം പാപം പാപം || പാപം പാപം പാപം പാപം ||
 പാപം പാപം പാപം പാപം || പാപം പാപം പാപം പാപം ||

3
A

പാപം പാപം പാപം പാപം || പാപം പാപം പാപം പാപം ||
 പാപം പാപം പാപം പാപം || പാപം പാപം പാപം പാപം ||
 പാപം പാപം പാപം പാപം || പാപം പാപം പാപം പാപം ||
 പാപം പാപം പാപം പാപം || പാപം പാപം പാപം പാപം ||

USADHA DEWA
 Pusat Dokumentasi
 Dinas Kebudayaan Provinsi Bali ~ Indonesia

8	4
	B

3
 ...
 ...
 ...
 ...

9	5
	A

...
 ...
 ...
 ...

USADHA DEWA
Pusat Dokumentasi
Dinas Kebudayaan Provinsi Bali ~ Indonesia

9	5
	B

Handwritten Balinese script on a palm leaf, consisting of two columns of text.

6	A
---	---

Handwritten Balinese script on a palm leaf, consisting of two columns of text.

USADHA DEWA
 Pusat Dokumentasi
 Dinas Kebudayaan Provinsi Bali ~ Indonesia

ω 9
B

Handwritten Balinese script on a palm leaf. The text is arranged in two columns. On the right side of the leaf, there is a circular stamp that reads "PUSAT DOKUMENTASI BUDHA BALI" and "BALI".

ω 10
A

Handwritten Balinese script on a palm leaf. The text is arranged in two columns. On the right side of the leaf, there is a circular stamp that reads "PUSAT DOKUMENTASI BUDHA BALI" and "BALI".

USADHA DEWA
 Pusat Dokumentasi
 Dinas Kebudayaan Provinsi Bali ~ Indonesia

11
B

Handwritten Balinese script on a palm leaf, consisting of two columns of text.

12
A

Handwritten Balinese script on a palm leaf, consisting of two columns of text.

USADHA DEWA
 Pusat Dokumentasi
 Dinas Kebudayaan Provinsi Bali ~ Indonesia

12
B

...
 ...
 ...
 ...
 ...

13
A

...
 ...
 ...
 ...
 ...

USADHA DEWA
Pusat Dokumentasi
Dinas Kebudayaan Provinsi Bali ~ Indonesia

13
B

Handwritten Balinese script on a palm leaf. The text is arranged in two columns. On the left side of the leaf, there is a small vertical inscription that reads "13 B".

14
A

Handwritten Balinese script on a palm leaf. The text is arranged in two columns. On the left side of the leaf, there is a small vertical inscription that reads "14 A".

USADHA DEWA
 Pusat Dokumentasi
 Dinas Kebudayaan Provinsi Bali ~ Indonesia

14
B

Handwritten text in Balinese script on a palm leaf, starting with '14 B'. The text is arranged in two columns.

15
A

Handwritten text in Balinese script on a palm leaf, starting with '15 A'. The text is arranged in two columns.

USADHA DEWA
 Pusat Dokumentasi
 Dinas Kebudayaan Provinsi Bali ~ Indonesia

15
B

Handwritten Balinese script on a palm leaf manuscript strip, with a small label '15 B' on the left.

16
A

Handwritten Balinese script on a palm leaf manuscript strip, with a small label '16 A' on the left.

USADHA DEWA
 Pusat Dokumentasi
 Dinas Kebudayaan Provinsi Bali ~ Indonesia

16
 B

Handwritten Balinese script on a palm leaf manuscript strip, likely containing a religious or philosophical text.

17
 A

Handwritten Balinese script on a palm leaf manuscript strip, likely containing a religious or philosophical text.

USADHA DEWA
 Pusat Dokumentasi
 Dinas Kebudayaan Provinsi Bali ~ Indonesia

17
B

Handwritten Balinese script on a palm leaf, consisting of two columns of text.

18
A

Handwritten Balinese script on a palm leaf, consisting of two columns of text.

USADHA DEWA
 Pusat Dokumentasi
 Dinas Kebudayaan Provinsi Bali ~ Indonesia

19
 B

Handwritten Balinese script on a palm leaf, consisting of two columns of text.

20
 A

Handwritten Balinese script on a palm leaf, consisting of two columns of text.

USADHA DEWA
 Pusat Dokumentasi
 Dinas Kebudayaan Provinsi Bali ~ Indonesia

20
B

Handwritten Balinese script on a palm leaf. The text is arranged in two columns. On the left side of the leaf, there are handwritten numbers '45' and '6'.

21
A

Handwritten Balinese script on a palm leaf. The text is arranged in two columns.

USADHA DEWA
 Pusat Dokumentasi
 Dinas Kebudayaan Provinsi Bali ~ Indonesia

22
 B

၁ လၢ်စီၤ ဣၤတၢ်ခါၤ ဣၤတၢ်ခါၤ ဣၤတၢ်ခါၤ ဣၤတၢ်ခါၤ ဣၤတၢ်ခါၤ
 ပၤတီၤတၢ်ခါၤ ဣၤတၢ်ခါၤ ဣၤတၢ်ခါၤ ဣၤတၢ်ခါၤ ဣၤတၢ်ခါၤ
 ဣၤတၢ်ခါၤ ဣၤတၢ်ခါၤ ဣၤတၢ်ခါၤ ဣၤတၢ်ခါၤ ဣၤတၢ်ခါၤ
 ဣၤတၢ်ခါၤ ဣၤတၢ်ခါၤ ဣၤတၢ်ခါၤ ဣၤတၢ်ခါၤ ဣၤတၢ်ခါၤ

23
 A

ဣၤတၢ်ခါၤ ဣၤတၢ်ခါၤ ဣၤတၢ်ခါၤ ဣၤတၢ်ခါၤ ဣၤတၢ်ခါၤ
 ဣၤတၢ်ခါၤ ဣၤတၢ်ခါၤ ဣၤတၢ်ခါၤ ဣၤတၢ်ခါၤ ဣၤတၢ်ခါၤ
 ဣၤတၢ်ခါၤ ဣၤတၢ်ခါၤ ဣၤတၢ်ခါၤ ဣၤတၢ်ခါၤ ဣၤတၢ်ခါၤ
 ဣၤတၢ်ခါၤ ဣၤတၢ်ခါၤ ဣၤတၢ်ခါၤ ဣၤတၢ်ခါၤ ဣၤတၢ်ခါၤ

USADHA DEWA
 Pusat Dokumentasi
 Dinas Kebudayaan Provinsi Bali ~ Indonesia

23	23
	B

Handwritten Balinese script on a palm leaf. The text is arranged in two columns. On the left side of the leaf, there is a handwritten number '23' and a small mark.

24	24
	A

Handwritten Balinese script on a palm leaf. The text is arranged in two columns. On the left side of the leaf, there is a handwritten number '24' and a small mark.

USADHA DEWA
 Pusat Dokumentasi
 Dinas Kebudayaan Provinsi Bali ~ Indonesia

24	B
----	---

Handwritten Balinese script on a palm leaf, consisting of two columns of text.

25	A
----	---

Handwritten Balinese script on a palm leaf, consisting of two columns of text.

USADHA DEWA
 Pusat Dokumentasi
 Dinas Kebudayaan Provinsi Bali ~ Indonesia

25
B

Handwritten text in Balinese script on a palm leaf. The text is arranged in two columns. On the left side of the leaf, there is a small handwritten number '45'.

26
A

Handwritten text in Balinese script on a palm leaf. The text is arranged in two columns.

USADHA DEWA
 Pusat Dokumentasi
 Dinas Kebudayaan Provinsi Bali ~ Indonesia

26
 B

Handwritten Balinese script on a palm leaf, consisting of two columns of text.

27
 A

Handwritten Balinese script on a palm leaf, consisting of two columns of text.

USADHA DEWA
 Pusat Dokumentasi
 Dinas Kebudayaan Provinsi Bali ~ Indonesia

27	27
	B

Handwritten Balinese script on a palm leaf. The text is arranged in two columns. On the left side, there is a small handwritten number '27' and a small mark.

28	28
	A

Handwritten Balinese script on a palm leaf. The text is arranged in two columns. On the left side, there is a small handwritten number '28' and a small mark.

USADHA DEWA
 Pusat Dokumentasi
 Dinas Kebudayaan Provinsi Bali ~ Indonesia

28
 B

Handwritten Balinese script on a palm leaf, consisting of two columns of text.

29
 A

Handwritten Balinese script on a palm leaf, consisting of two columns of text.

USADHA DEWA
 Pusat Dokumentasi
 Dinas Kebudayaan Provinsi Bali ~ Indonesia

29
 B

Handwritten Balinese script on a palm leaf manuscript strip, divided into two sections by a hole. The text is written in a traditional style.

30
 A

Handwritten Balinese script on a palm leaf manuscript strip, divided into two sections by a hole. The text is written in a traditional style.

USADHA DEWA
 Pusat Dokumentasi
 Dinas Kebudayaan Provinsi Bali ~ Indonesia

30
B

Handwritten Balinese script on a palm leaf manuscript strip. The text is arranged in two columns. The left column contains approximately 10 lines of text, and the right column contains approximately 10 lines of text. The script is finely etched into the surface of the dried leaf.

31
A

Handwritten Balinese script on a palm leaf manuscript strip. The text is arranged in two columns. The left column contains approximately 10 lines of text, and the right column contains approximately 10 lines of text. The script is finely etched into the surface of the dried leaf.

USADHA DEWA
 Pusat Dokumentasi
 Dinas Kebudayaan Provinsi Bali ~ Indonesia

31	31
	B

Handwritten Balinese script on a palm leaf. The text is arranged in two columns. On the left side, there is a small handwritten number '20' and a hole for binding. The script is a form of Balinese used in traditional religious or legal documents.

32	32
	A

Handwritten Balinese script on a palm leaf. The text is arranged in two columns. On the left side, there is a small handwritten number '21' and a hole for binding. The script is a form of Balinese used in traditional religious or legal documents.

USADHA DEWA
 Pusat Dokumentasi
 Dinas Kebudayaan Provinsi Bali ~ Indonesia

33	32
	B

Handwritten Balinese script on a palm leaf manuscript strip, consisting of two columns of text.

33	33
	A

Handwritten Balinese script on a palm leaf manuscript strip, consisting of two columns of text.

USADHA DEWA
 Pusat Dokumentasi
 Dinas Kebudayaan Provinsi Bali ~ Indonesia

33	33
	B

၃၃
 စာ၊ အလံတူစီ၊ ပထမတွင်ပညာပညာပညာ၊ ဟူဟူ
 ဟူ၊ ပညာပညာ၊ စာ၊ ၅၀၀၀၀၀၀၀၀၀၀၀၀၀၀၀၀၀၀၀၀
 အစိုး၊ ဟူဟူဟူ၊ ဟူဟူဟူ၊ ၅၀၀၀၀၀၀၀၀၀၀၀၀၀
 အလံတူစီ၊ ၅၀၀၀၀၀၀၀၀၀၀၀၀၀၀၀၀၀၀၀၀၀၀၀၀၀

34	34
	A

၃၄
 စာ၊ အလံတူစီ၊ ပထမတွင်ပညာပညာပညာ၊ ဟူဟူ
 ဟူ၊ ပညာပညာ၊ စာ၊ ၅၀၀၀၀၀၀၀၀၀၀၀၀၀၀၀၀၀၀၀
 အစိုး၊ ဟူဟူဟူ၊ ဟူဟူဟူ၊ ၅၀၀၀၀၀၀၀၀၀၀၀၀၀
 အလံတူစီ၊ ၅၀၀၀၀၀၀၀၀၀၀၀၀၀၀၀၀၀၀၀၀၀၀၀၀

USADHA DEWA
Pusat Dokumentasi
Dinas Kebudayaan Provinsi Bali ~ Indonesia

34
B

Handwritten Balinese script on a palm leaf manuscript strip (34 B). The script is arranged in two columns. The left column begins with a decorative symbol resembling a stylized 'U' or '3'. The text consists of approximately 10 lines of dense, cursive characters.

35
A

Handwritten Balinese script on a palm leaf manuscript strip (35 A). The script is arranged in two columns. The left column begins with a decorative symbol resembling a stylized 'U' or '3'. The text consists of approximately 10 lines of dense, cursive characters.

USADHA DEWA
 Pusat Dokumentasi
 Dinas Kebudayaan Provinsi Bali ~ Indonesia

36	36
B	

Handwritten Balinese script on a palm leaf, consisting of two columns of text.

37	37
A	

Handwritten Balinese script on a palm leaf, consisting of two columns of text.

USADHA DEWA
 Pusat Dokumentasi
 Dinas Kebudayaan Provinsi Bali ~ Indonesia

38	38
	B

20
 ...
 ...
 ...
 ...

39	39
	A

...
 ...
 ...
 ...

USADHA DEWA
 Pusat Dokumentasi
 Dinas Kebudayaan Provinsi Bali ~ Indonesia

80	40
	B

80

...
 ...
 ...
 ...

81	41
	A

...
 ...
 ...
 ...

USADHA DEWA
Pusat Dokumentasi
Dinas Kebudayaan Provinsi Bali ~ Indonesia

41
B

Handwritten Balinese script on a palm leaf, containing two columns of text.

42
A

Handwritten Balinese script on a palm leaf, containing two columns of text.

USADHA DEWA
 Pusat Dokumentasi
 Dinas Kebudayaan Provinsi Bali ~ Indonesia

42
B

Handwritten Balinese script on a palm leaf. The text is arranged in two columns, with a small hole visible in the center of the leaf. The script is finely etched and appears to be a form of liturgical or historical text.

43
A

Handwritten Balinese script on a palm leaf. The text is arranged in two columns, with a small hole visible in the center of the leaf. The script is finely etched and appears to be a form of liturgical or historical text.

USADHA DEWA
 Pusat Dokumentasi
 Dinas Kebudayaan Provinsi Bali ~ Indonesia

83	44
	B

36

...
 ...
 ...
 ...
 ...

89	45
	A

...
 ...
 ...
 ...
 ...

USADHA DEWA
 Pusat Dokumentasi
 Dinas Kebudayaan Provinsi Bali ~ Indonesia

45
 B

၃၅
 တၢ်ကယျုၤ ဣၤ ဣၤတၢ်ကယျုၤ ဣၤ တၢ်ကယျုၤ ပၤတၢ်ကယျုၤ
 တၢ်ကယျုၤ ဣၤ တၢ်ကယျုၤ တၢ်ကယျုၤ တၢ်ကယျုၤ တၢ်ကယျုၤ
 တၢ်ကယျုၤ တၢ်ကယျုၤ တၢ်ကယျုၤ တၢ်ကယျုၤ တၢ်ကယျုၤ
 တၢ်ကယျုၤ တၢ်ကယျုၤ တၢ်ကယျုၤ တၢ်ကယျုၤ တၢ်ကယျုၤ

46
 A

တၢ်ကယျုၤ တၢ်ကယျုၤ တၢ်ကယျုၤ တၢ်ကယျုၤ တၢ်ကယျုၤ
 တၢ်ကယျုၤ တၢ်ကယျုၤ တၢ်ကယျုၤ တၢ်ကယျုၤ တၢ်ကယျုၤ
 တၢ်ကယျုၤ တၢ်ကယျုၤ တၢ်ကယျုၤ တၢ်ကယျုၤ တၢ်ကယျုၤ
 တၢ်ကယျုၤ တၢ်ကယျုၤ တၢ်ကယျုၤ တၢ်ကယျုၤ တၢ်ကယျုၤ

USADHA DEWA
 Pusat Dokumentasi
 Dinas Kebudayaan Provinsi Bali ~ Indonesia

86	46
	B

Handwritten Balinese script on a palm leaf, consisting of two columns of text.

87	47
	A

Handwritten Balinese script on a palm leaf, consisting of two columns of text.

USADHA DEWA
 Pusat Dokumentasi
 Dinas Kebudayaan Provinsi Bali ~ Indonesia

ꦱꦫ	47
	B

ꦱꦫ
 ၇၂၁ ဝဏ္ဏံ ပိန္နဲၵုၵ်း၊ ပဉ္စမဉ္စမ္မာ ဟိ ဝဏ္ဏံ ပိန္နဲၵုၵ်း
 ၇၂၁။ ဝဏ္ဏံ ပိန္နဲၵုၵ်း၊ ပဉ္စမဉ္စမ္မာ ဟိ ဝဏ္ဏံ ပိန္နဲၵုၵ်း
 ဝဏ္ဏံ ပိန္နဲၵုၵ်း။ ၀။ ၀။ ၀။ ၀။ ၀။ ၀။ ၀။ ၀။ ၀။ ၀။
 ဝဏ္ဏံ ပိန္နဲၵုၵ်း၊ ပဉ္စမဉ္စမ္မာ ဟိ ဝဏ္ဏံ ပိန္နဲၵုၵ်း။

၇၂၁။ ပဉ္စမဉ္စမ္မာ ဟိ ဝဏ္ဏံ ပိန္နဲၵုၵ်း၊ ပဉ္စမဉ္စမ္မာ ဟိ
 ဝဏ္ဏံ ပိန္နဲၵုၵ်း။ ၀။ ၀။ ၀။ ၀။ ၀။ ၀။ ၀။ ၀။ ၀။ ၀။
 ဝဏ္ဏံ ပိန္နဲၵုၵ်း၊ ပဉ္စမဉ္စမ္မာ ဟိ ဝဏ္ဏံ ပိန္နဲၵုၵ်း။

ꦱꦫ	48
	A

ပိန္နဲၵုၵ်း၊ ပဉ္စမဉ္စမ္မာ ဟိ ဝဏ္ဏံ ပိန္နဲၵုၵ်း၊ ပဉ္စမဉ္စမ္မာ
 ဟိ ဝဏ္ဏံ ပိန္နဲၵုၵ်း။ ၀။ ၀။ ၀။ ၀။ ၀။ ၀။ ၀။ ၀။ ၀။ ၀။
 ပိန္နဲၵုၵ်း၊ ပဉ္စမဉ္စမ္မာ ဟိ ဝဏ္ဏံ ပိန္နဲၵုၵ်း။

ပိန္နဲၵုၵ်း၊ ပဉ္စမဉ္စမ္မာ ဟိ ဝဏ္ဏံ ပိန္နဲၵုၵ်း၊ ပဉ္စမဉ္စမ္မာ
 ဟိ ဝဏ္ဏံ ပိန္နဲၵုၵ်း။ ၀။ ၀။ ၀။ ၀။ ၀။ ၀။ ၀။ ၀။ ၀။ ၀။
 ပိန္နဲၵုၵ်း၊ ပဉ္စမဉ္စမ္မာ ဟိ ဝဏ္ဏံ ပိန္နဲၵုၵ်း။

USADHA DEWA
 Pusat Dokumentasi
 Dinas Kebudayaan Provinsi Bali ~ Indonesia

85	48
	B

85
 ...
 ...
 ...
 ...

85	49
	A

...
 ...
 ...
 ...

USADHA DEWA
Pusat Dokumentasi
Dinas Kebudayaan Provinsi Bali ~ Indonesia

84	49
	B

3.41
...
...
...
...

90	50
	A

...
...
...
...

USADHA DEWA
Pusat Dokumentasi
Dinas Kebudayaan Provinsi Bali ~ Indonesia

51	B

31. 22. 1. 2. 3. 4. 5. 6. 7. 8. 9. 10. 11. 12. 13. 14. 15. 16. 17. 18. 19. 20. 21. 22. 23. 24. 25. 26. 27. 28. 29. 30. 31. 32. 33. 34. 35. 36. 37. 38. 39. 40. 41. 42. 43. 44. 45. 46. 47. 48. 49. 50. 51. 52. 53. 54. 55. 56. 57. 58. 59. 60. 61. 62. 63. 64. 65. 66. 67. 68. 69. 70. 71. 72. 73. 74. 75. 76. 77. 78. 79. 80. 81. 82. 83. 84. 85. 86. 87. 88. 89. 90. 91. 92. 93. 94. 95. 96. 97. 98. 99. 100.

| | |
|----|---|
| 52 | A |
| | |

32. 1. 2. 3. 4. 5. 6. 7. 8. 9. 10. 11. 12. 13. 14. 15. 16. 17. 18. 19. 20. 21. 22. 23. 24. 25. 26. 27. 28. 29. 30. 31. 32. 33. 34. 35. 36. 37. 38. 39. 40. 41. 42. 43. 44. 45. 46. 47. 48. 49. 50. 51. 52. 53. 54. 55. 56. 57. 58. 59. 60. 61. 62. 63. 64. 65. 66. 67. 68. 69. 70. 71. 72. 73. 74. 75. 76. 77. 78. 79. 80. 81. 82. 83. 84. 85. 86. 87. 88. 89. 90. 91. 92. 93. 94. 95. 96. 97. 98. 99. 100.

USADHA DEWA
 Pusat Dokumentasi
 Dinas Kebudayaan Provinsi Bali ~ Indonesia

| | |
|----|----|
| 53 | 53 |
| B | |

53
53

 ...
 ...
 ...
 ...

| | |
|----|----|
| 54 | 54 |
| A | |

54
54

 ...
 ...
 ...
 ...

USADHA DEWA
Pusat Dokumentasi
Dinas Kebudayaan Provinsi Bali ~ Indonesia

93
54
B

93
... 0 ...
...
...
...

...
...
...
...
...

650

94
55
A

94
...
...
...
...

...
...
...
...
...

650

USADHA DEWA
Pusat Dokumentasi
Dinas Kebudayaan Provinsi Bali ~ Indonesia

| | |
|----|---------|
| 99 | 55
B |
|----|---------|

99

සුභාශ්වා ඤාණාත්මිංසො නාමාස්මාභ්‍යඤ්ඤා සමුඤ්ඤා ||
සංඝඤ්ඤා ඤාණඤ්ඤා ඤාණභ්‍යඤ්ඤා ඤාණභ්‍යඤ්ඤා
ඤාණභ්‍යඤ්ඤා ඤාණභ්‍යඤ්ඤා ඤාණභ්‍යඤ්ඤා ඤාණභ්‍යඤ්ඤා ||
ඤාණභ්‍යඤ්ඤා ඤාණභ්‍යඤ්ඤා ඤාණභ්‍යඤ්ඤා ||

සංඝභ්‍යඤ්ඤා ඤාණභ්‍යඤ්ඤා ඤාණභ්‍යඤ්ඤා ඤාණභ්‍යඤ්ඤා ඤාණභ්‍යඤ්ඤා
ඤාණභ්‍යඤ්ඤා ඤාණභ්‍යඤ්ඤා ඤාණභ්‍යඤ්ඤා ඤාණභ්‍යඤ්ඤා ඤාණභ්‍යඤ්ඤා
ඤාණභ්‍යඤ්ඤා ඤාණභ්‍යඤ්ඤා ඤාණභ්‍යඤ්ඤා || පිටිස්සා ඤාණභ්‍යඤ්ඤා
ඤාණභ්‍යඤ්ඤා || ඤාණභ්‍යඤ්ඤා ඤාණභ්‍යඤ්ඤා || ඤාණභ්‍යඤ්ඤා

| | |
|----|---------|
| 96 | 56
A |
|----|---------|

96

ඤාණභ්‍යඤ්ඤා ඤාණභ්‍යඤ්ඤා ඤාණභ්‍යඤ්ඤා ඤාණභ්‍යඤ්ඤා ඤාණභ්‍යඤ්ඤා
ඤාණභ්‍යඤ්ඤා ඤාණභ්‍යඤ්ඤා ඤාණභ්‍යඤ්ඤා ඤාණභ්‍යඤ්ඤා ඤාණභ්‍යඤ්ඤා
ඤාණභ්‍යඤ්ඤා ඤාණභ්‍යඤ්ඤා ඤාණභ්‍යඤ්ඤා ඤාණභ්‍යඤ්ඤා ඤාණභ්‍යඤ්ඤා
ඤාණභ්‍යඤ්ඤා ඤාණභ්‍යඤ්ඤා ඤාණභ්‍යඤ්ඤා || පිටිස්සා ඤාණභ්‍යඤ්ඤා
ඤාණභ්‍යඤ්ඤා || ඤාණභ්‍යඤ්ඤා ඤාණභ්‍යඤ්ඤා || ඤාණභ්‍යඤ්ඤා

USADHA DEWA
Pusat Dokumentasi
Dinas Kebudayaan Provinsi Bali ~ Indonesia

| | |
|----|----|
| ၅၆ | 56 |
| | B |

၅၆ ၊ ပြီးလျှင် ၁၅ နာရီ ၊ ဖာသေပျာဏ် နှစ်သင်္ကြန် ကာလ ၊ ဝါ
၀၀၁ ဖာသေပျာဏ် ၊ ဖာသေပျာဏ် ၊ ဖာသေပျာဏ် ၊ ဖာသေပျာဏ် ၊
ဇာတိ ၊ ဖာသေပျာဏ် ၊ ဖာသေပျာဏ် ၊ ဝါ ၊ ဝါ ၊ ဝါ ၊ ဝါ ၊ ဝါ ၊ ဝါ ၊
ပျာဏ် ၊ ဝါ ၊ ဝါ ၊ ဝါ ၊ ဝါ ၊ ဝါ ၊ ဝါ ၊ ဝါ ၊ ဝါ ၊ ဝါ ၊ ဝါ ၊ ဝါ ၊

၅၆ ဖာသေပျာဏ် ၊ ဝါ ၊ ဝါ ၊ ဝါ ၊ ဝါ ၊ ဝါ ၊ ဝါ ၊ ဝါ ၊ ဝါ ၊ ဝါ ၊
ဝါ ၊ ဝါ ၊ ဝါ ၊ ဝါ ၊ ဝါ ၊ ဝါ ၊ ဝါ ၊ ဝါ ၊ ဝါ ၊ ဝါ ၊ ဝါ ၊ ဝါ ၊
ဝါ ၊ ဝါ ၊ ဝါ ၊ ဝါ ၊ ဝါ ၊ ဝါ ၊ ဝါ ၊ ဝါ ၊ ဝါ ၊ ဝါ ၊ ဝါ ၊ ဝါ ၊
ဝါ ၊ ဝါ ၊ ဝါ ၊ ဝါ ၊ ဝါ ၊ ဝါ ၊ ဝါ ၊ ဝါ ၊ ဝါ ၊ ဝါ ၊ ဝါ ၊ ဝါ ၊

| | |
|----|----|
| ၅၇ | 57 |
| | A |

၅၇ သိပ္ပါ ၊ သင်္ကြန် ၊ သင်္ကြန် ၊ သင်္ကြန် ၊ သင်္ကြန် ၊ သင်္ကြန် ၊
သင်္ကြန် ၊ သင်္ကြန် ၊ သင်္ကြန် ၊ သင်္ကြန် ၊ သင်္ကြန် ၊ သင်္ကြန် ၊
သင်္ကြန် ၊ သင်္ကြန် ၊ သင်္ကြန် ၊ သင်္ကြန် ၊ သင်္ကြန် ၊ သင်္ကြန် ၊
သင်္ကြန် ၊ သင်္ကြန် ၊ သင်္ကြန် ၊ သင်္ကြန် ၊ သင်္ကြန် ၊ သင်္ကြန် ၊

၅၇ သင်္ကြန် ၊ သင်္ကြန် ၊ သင်္ကြန် ၊ သင်္ကြန် ၊ သင်္ကြန် ၊ သင်္ကြန် ၊
သင်္ကြန် ၊ သင်္ကြန် ၊ သင်္ကြန် ၊ သင်္ကြန် ၊ သင်္ကြန် ၊ သင်္ကြန် ၊
သင်္ကြန် ၊ သင်္ကြန် ၊ သင်္ကြန် ၊ သင်္ကြန် ၊ သင်္ကြန် ၊ သင်္ကြန် ၊
သင်္ကြန် ၊ သင်္ကြန် ၊ သင်္ကြန် ၊ သင်္ကြန် ၊ သင်္ကြန် ၊ သင်္ကြန် ၊

USADHA DEWA
 Pusat Dokumentasi
 Dinas Kebudayaan Provinsi Bali ~ Indonesia

| | |
|----|----|
| 95 | 57 |
| | B |

95
650

 ...
 ...
 ...
 ...
 ...

| | |
|----|----|
| 96 | 58 |
| | A |

96
650

 ...
 ...
 ...
 ...
 ...

USADHA DEWA
Pusat Dokumentasi
Dinas Kebudayaan Provinsi Bali ~ Indonesia

| |
|----|
| 58 |
| B |

Handwritten text in Balinese script on a palm leaf fragment. The text is arranged in two columns. On the left side of the fragment, the number '95' is written vertically. At the top right of the fragment, the number '280' is written. The text is written in dark ink on a light-colored, aged palm leaf surface. There are small holes on the left and right edges of the fragment.

| |
|----|
| 59 |
| A |

Handwritten text in Balinese script on a palm leaf fragment. The text is arranged in two columns. On the left side of the fragment, the number '96' is written vertically. The text is written in dark ink on a light-colored, aged palm leaf surface. There are small holes on the left and right edges of the fragment.

USADHA DEWA
 Pusat Dokumentasi
 Dinas Kebudayaan Provinsi Bali ~ Indonesia

| | |
|----|----|
| 94 | 59 |
| | B |

94
 ...
 ...
 ...
 ...
 ...
 ...
 ...

| | |
|----|----|
| 60 | 60 |
| | A |

...
 ...
 ...
 ...
 ...

USADHA DEWA
 Pusat Dokumentasi
 Dinas Kebudayaan Provinsi Bali ~ Indonesia

| | |
|----|----|
| 60 | 60 |
| | B |

Handwritten Balinese script on a palm leaf manuscript strip. The text is arranged in approximately 10 horizontal lines. On the left side of the strip, there is a small handwritten number '60'. On the right side, there is a small handwritten number '60'.

| | |
|----|----|
| 61 | 61 |
| | A |

Handwritten Balinese script on a palm leaf manuscript strip. The text is arranged in approximately 10 horizontal lines. On the left side of the strip, there is a small handwritten number '61'. On the right side, there is a small handwritten number '61'.

USADHA DEWA
Pusat Dokumentasi
Dinas Kebudayaan Provinsi Bali ~ Indonesia

61
B

5
പുസ്തകങ്ങളെഴുതുമ്പോൾ എഴുതുന്നതിനെക്കുറിച്ചുള്ള സൂചനകൾ
ഇതിൽ കാണാം. ഇതിൽ പട്ടണങ്ങളുടെ പേരുകളും
വിലാസങ്ങളും കാണാം. ഇതിൽ പട്ടണങ്ങളുടെ
പേരുകളും വിലാസങ്ങളും കാണാം.

1 മുതൽ 50 വരെ എഴുതുന്നതിനെക്കുറിച്ചുള്ള സൂചനകൾ
ഇതിൽ കാണാം. ഇതിൽ പട്ടണങ്ങളുടെ പേരുകളും
വിലാസങ്ങളും കാണാം. ഇതിൽ പട്ടണങ്ങളുടെ
പേരുകളും വിലാസങ്ങളും കാണാം.

196

62
A

ഇതിൽ പട്ടണങ്ങളുടെ പേരുകളും വിലാസങ്ങളും
കാണാം. ഇതിൽ പട്ടണങ്ങളുടെ പേരുകളും
വിലാസങ്ങളും കാണാം. ഇതിൽ പട്ടണങ്ങളുടെ
പേരുകളും വിലാസങ്ങളും കാണാം.

ഇതിൽ പട്ടണങ്ങളുടെ പേരുകളും വിലാസങ്ങളും
കാണാം. ഇതിൽ പട്ടണങ്ങളുടെ പേരുകളും
വിലാസങ്ങളും കാണാം. ഇതിൽ പട്ടണങ്ങളുടെ
പേരുകളും വിലാസങ്ങളും കാണാം.

USADHA DEWA
 Pusat Dokumentasi
 Dinas Kebudayaan Provinsi Bali ~ Indonesia

| |
|----|
| 62 |
| B |

Handwritten Balinese script on a palm leaf manuscript strip, divided into two columns by a central hole. The script is finely etched and follows the traditional layout of such documents.

| |
|----|
| 63 |
| A |

Handwritten Balinese script on a palm leaf manuscript strip, divided into two columns by a central hole. The script is finely etched and follows the traditional layout of such documents.

USADHA DEWA
 Pusat Dokumentasi
 Dinas Kebudayaan Provinsi Bali ~ Indonesia

| |
|----|
| 63 |
| B |

63
 ...
 ...
 ...
 ...
 ...

| |
|----|
| 64 |
| A |

64
 ...
 ...
 ...
 ...

USADHA DEWA
 Pusat Dokumentasi
 Dinas Kebudayaan Provinsi Bali ~ Indonesia

| | |
|----|----|
| 28 | 64 |
| | B |

Handwritten Balinese script on a palm leaf, consisting of two columns of text. The script is finely etched and runs horizontally across the leaf. There are two circular holes visible on the leaf, one on the left and one on the right, used for binding.

| | |
|----|----|
| 29 | 65 |
| | A |

Handwritten Balinese script on a palm leaf, consisting of two columns of text. The script is finely etched and runs horizontally across the leaf. There are two circular holes visible on the leaf, one on the left and one on the right, used for binding.

USADHA DEWA
 Pusat Dokumentasi
 Dinas Kebudayaan Provinsi Bali ~ Indonesia

65
 B

Handwritten Balinese script on a palm leaf, consisting of two columns of text.

66
 A

Handwritten Balinese script on a palm leaf, consisting of two columns of text.

USADHA DEWA
Pusat Dokumentasi
Dinas Kebudayaan Provinsi Bali ~ Indonesia

66
B

Handwritten Balinese script on a palm leaf, consisting of two columns of text.

67
A

Handwritten Balinese script on a palm leaf, consisting of two columns of text.

USADHA DEWA
 Pusat Dokumentasi
 Dinas Kebudayaan Provinsi Bali ~ Indonesia

| |
|----|
| 67 |
| B |

Handwritten Balinese script on a palm leaf manuscript strip, divided into two columns by a central hole. The script is written in a traditional style.

| |
|----|
| 68 |
| A |

Handwritten Balinese script on a palm leaf manuscript strip, divided into two columns by a central hole. The script is written in a traditional style.

USADHA DEWA
Pusat Dokumentasi
Dinas Kebudayaan Provinsi Bali ~ Indonesia

| | |
|----|----|
| ၂၀ | 68 |
| | B |

၂၀၂၁ ခုနှစ် ဇူလိုင်လ ၂ ရက်နေ့ နံနက် ၅ နာရီခန့် ဝမ်းဗိုက်
ကျောခွဲ နှစ်ဖက် နှစ်ဖက် ပြင်ပ နှစ်ဖက် နှစ်ဖက်
ကျောခွဲ နှစ်ဖက် နှစ်ဖက် ပြင်ပ နှစ်ဖက် နှစ်ဖက်
ကျောခွဲ နှစ်ဖက် နှစ်ဖက် ပြင်ပ နှစ်ဖက် နှစ်ဖက်
ကျောခွဲ နှစ်ဖက် နှစ်ဖက် ပြင်ပ နှစ်ဖက် နှစ်ဖက်

| | |
|----|----|
| ၂၀ | 69 |
| | A |

ကျောခွဲ နှစ်ဖက် နှစ်ဖက် ပြင်ပ နှစ်ဖက် နှစ်ဖက်
ကျောခွဲ နှစ်ဖက် နှစ်ဖက် ပြင်ပ နှစ်ဖက် နှစ်ဖက်
ကျောခွဲ နှစ်ဖက် နှစ်ဖက် ပြင်ပ နှစ်ဖက် နှစ်ဖက်
ကျောခွဲ နှစ်ဖက် နှစ်ဖက် ပြင်ပ နှစ်ဖက် နှစ်ဖက်
ကျောခွဲ နှစ်ဖက် နှစ်ဖက် ပြင်ပ နှစ်ဖက် နှစ်ဖက်

USADHA DEWA
 Pusat Dokumentasi
 Dinas Kebudayaan Provinsi Bali ~ Indonesia

| |
|----|
| 69 |
| B |

Handwritten Balinese script on a palm leaf manuscript strip, divided into two columns. The script is finely etched and runs horizontally across the length of the leaf.

| |
|----|
| 70 |
| A |

Handwritten Balinese script on a palm leaf manuscript strip, divided into two columns. The script is finely etched and runs horizontally across the length of the leaf.

USADHA DEWA
 Pusat Dokumentasi
 Dinas Kebudayaan Provinsi Bali ~ Indonesia

| | |
|----|----|
| no | 70 |
| | B |

Handwritten Balinese script on a palm leaf manuscript strip, divided into two columns. The script is finely etched and runs horizontally across the length of the leaf.

| | |
|----|----|
| no | 71 |
| | A |

Handwritten Balinese script on a palm leaf manuscript strip, divided into two columns. The script is finely etched and runs horizontally across the length of the leaf.

USADHA DEWA
Pusat Dokumentasi
Dinas Kebudayaan Provinsi Bali ~ Indonesia

71
B

Handwritten Balinese script on a palm leaf. The text is arranged in two columns. The left column begins with a small symbol resembling '20' and contains approximately 10 lines of text. The right column contains approximately 10 lines of text. The script is finely etched into the surface of the dried leaf.

72
A

Handwritten Balinese script on a palm leaf. The text is arranged in two columns. The left column contains approximately 10 lines of text, starting with a small symbol. The right column contains approximately 10 lines of text. The script is finely etched into the surface of the dried leaf.

USADHA DEWA
 Pusat Dokumentasi
 Dinas Kebudayaan Provinsi Bali ~ Indonesia

| | |
|----|----|
| 72 | 72 |
| | B |

Handwritten Balinese script on a palm leaf manuscript strip, consisting of two columns of text.

| | |
|----|----|
| 73 | 73 |
| | A |

Handwritten Balinese script on a palm leaf manuscript strip, consisting of two columns of text.

USADHA DEWA
 Pusat Dokumentasi
 Dinas Kebudayaan Provinsi Bali ~ Indonesia

| | |
|----|----|
| 73 | 73 |
| B | |

Handwritten Balinese script on a palm leaf manuscript strip. The text is arranged in two columns. The left column begins with a small symbol resembling a triangle with a dot above it. The script is finely etched into the surface of the dried leaf.

| | |
|----|----|
| 74 | 74 |
| A | |

Handwritten Balinese script on a palm leaf manuscript strip. The text is arranged in two columns. The left column begins with a small symbol resembling a triangle with a dot above it. The script is finely etched into the surface of the dried leaf.

USADHA DEWA
 Pusat Dokumentasi
 Dinas Kebudayaan Provinsi Bali ~ Indonesia

| | |
|-------|----|
| nomor | 74 |
| | B |

Handwritten Balinese script on a palm leaf manuscript. The text is arranged in two columns, with a small vertical inscription on the left edge. The script is finely etched into the surface of the leaf.

| | |
|-------|----|
| nomor | 75 |
| | A |

Handwritten Balinese script on a palm leaf manuscript. The text is arranged in two columns, with a small vertical inscription on the left edge. The script is finely etched into the surface of the leaf.

USADHA DEWA
 Pusat Dokumentasi
 Dinas Kebudayaan Provinsi Bali ~ Indonesia

| |
|----|
| 75 |
| B |

Handwritten Balinese script on a palm leaf manuscript strip, divided into two columns. The script is finely etched and follows the traditional layout of such documents.

| |
|----|
| 76 |
| A |

Handwritten Balinese script on a palm leaf manuscript strip, divided into two columns. The script is finely etched and follows the traditional layout of such documents.

USADHA DEWA
 Pusat Dokumentasi
 Dinas Kebudayaan Provinsi Bali ~ Indonesia

| |
|----|
| 76 |
| B |

Handwritten text in Balinese script on a palm leaf. The text is arranged in two columns. The left column begins with a small symbol resembling a '3' or a similar character. The right column begins with a small symbol resembling a '4' or a similar character. The script is dense and fills most of the leaf's surface.

| |
|----|
| 77 |
| A |

Handwritten text in Balinese script on a palm leaf. The text is arranged in two columns. The script is dense and fills most of the leaf's surface.

USADHA DEWA
Pusat Dokumentasi
Dinas Kebudayaan Provinsi Bali ~ Indonesia

| | |
|----|----|
| លល | 77 |
| | B |

Handwritten Balinese script on a palm leaf. The text is arranged in two columns. The left column begins with the character 'ស' (sa) and contains approximately 10 lines of text. The right column contains approximately 10 lines of text. The script is a traditional Balinese form, likely used for religious or administrative purposes.

| | |
|----|----|
| លល | 78 |
| | A |

Handwritten Balinese script on a palm leaf. The text is arranged in two columns. The left column begins with the character 'ស' (sa) and contains approximately 10 lines of text. The right column contains approximately 10 lines of text. The script is a traditional Balinese form, likely used for religious or administrative purposes.

លេខ 78
B

សីល ឲ្យ បដិសេធ ឲ្យ ដំបូង ឲ្យ បដិសេធ ឲ្យ ដំបូង ឲ្យ បដិសេធ ឲ្យ ដំបូង ឲ្យ បដិសេធ
 ឲ្យ បដិសេធ ឲ្យ ដំបូង ឲ្យ បដិសេធ ឲ្យ ដំបូង ឲ្យ បដិសេធ ឲ្យ ដំបូង ឲ្យ បដិសេធ
 ឲ្យ បដិសេធ ឲ្យ ដំបូង ឲ្យ បដិសេធ ឲ្យ ដំបូង ឲ្យ បដិសេធ ឲ្យ ដំបូង ឲ្យ បដិសេធ
 ឲ្យ បដិសេធ ឲ្យ ដំបូង ឲ្យ បដិសេធ ឲ្យ ដំបូង ឲ្យ បដិសេធ ឲ្យ ដំបូង ឲ្យ បដិសេធ

លេខ 79
A

ឲ្យ បដិសេធ ឲ្យ ដំបូង ឲ្យ បដិសេធ ឲ្យ ដំបូង ឲ្យ បដិសេធ ឲ្យ ដំបូង ឲ្យ បដិសេធ
 ឲ្យ បដិសេធ ឲ្យ ដំបូង ឲ្យ បដិសេធ ឲ្យ ដំបូង ឲ្យ បដិសេធ ឲ្យ ដំបូង ឲ្យ បដិសេធ
 ឲ្យ បដិសេធ ឲ្យ ដំបូង ឲ្យ បដិសេធ ឲ្យ ដំបូង ឲ្យ បដិសេធ ឲ្យ ដំបូង ឲ្យ បដិសេធ
 ឲ្យ បដិសេធ ឲ្យ ដំបូង ឲ្យ បដិសេធ ឲ្យ ដំបូង ឲ្យ បដិសេធ ឲ្យ ដំបូង ឲ្យ បដិសេធ

USADHA DEWA
 Pusat Dokumentasi
 Dinas Kebudayaan Provinsi Bali ~ Indonesia

| | |
|-----|----|
| usw | 79 |
| | B |

Handwritten Balinese script on a palm leaf. The text is arranged in two columns. On the left side, there is a small handwritten note: "usw".

| | |
|-----|----|
| usw | 80 |
| | A |

Handwritten Balinese script on a palm leaf. The text is arranged in two columns. On the left side, there is a small handwritten note: "usw".

USADHA DEWA
Pusat Dokumentasi
Dinas Kebudayaan Provinsi Bali ~ Indonesia

80
B

Handwritten Balinese script on a palm leaf manuscript, consisting of two columns of text. The script is finely inscribed and runs horizontally across the length of the leaf. There are two circular holes punched through the leaf, one on each side, used for binding multiple leaves together.

81
A

Handwritten Balinese script on a palm leaf manuscript, consisting of two columns of text. The script is finely inscribed and runs horizontally across the length of the leaf. There are two circular holes punched through the leaf, one on each side, used for binding multiple leaves together.

USADHA DEWA
Pusat Dokumentasi
Dinas Kebudayaan Provinsi Bali ~ Indonesia

81
B

Handwritten text in Balinese script on a palm leaf. The text is arranged in two columns. The left column starts with a small symbol resembling a crescent moon and a star, followed by several lines of script. The right column also contains several lines of script. There are two circular holes visible on the leaf, one on each side.

82
A

Handwritten text in Balinese script on a palm leaf. The text is arranged in two columns. The left column starts with a small symbol resembling a crescent moon and a star, followed by several lines of script. The right column also contains several lines of script. There are two circular holes visible on the leaf, one on each side.

USADHA DEWA
 Pusat Dokumentasi
 Dinas Kebudayaan Provinsi Bali ~ Indonesia

| | |
|----|---|
| 82 | B |
|----|---|

Handwritten text on palm leaf 82B, written in Balinese script. The text is arranged in two columns. The left column begins with the character 'ꦥꦸꦱ' (Pusa) and contains approximately 10 lines of text. The right column contains approximately 10 lines of text. There are two circular holes visible on the leaf.

| | |
|----|---|
| 83 | A |
|----|---|

Handwritten text on palm leaf 83A, written in Balinese script. The text is arranged in two columns. The left column contains approximately 10 lines of text. The right column contains approximately 10 lines of text. There are two circular holes visible on the leaf.

USADHA DEWA
Pusat Dokumentasi
Dinas Kebudayaan Provinsi Bali ~ Indonesia

| | |
|----|---|
| 83 | B |
|----|---|

Handwritten text in Balinese script on a palm leaf manuscript. The text is arranged in two columns. The first column begins with a large initial character 'ꦱꦸ' (Su). The script is a form of Balinese used in traditional manuscripts.

| | |
|----|---|
| 84 | A |
|----|---|

Handwritten text in Balinese script on a palm leaf manuscript. The text is arranged in two columns. The script is a form of Balinese used in traditional manuscripts.

USADHA DEWA
Pusat Dokumentasi
Dinas Kebudayaan Provinsi Bali ~ Indonesia

| | |
|----|---|
| 84 | B |
|----|---|

84 B

Handwritten text in Balinese script on a palm leaf manuscript strip. The text is arranged in approximately 10 horizontal lines. The first line begins with a small symbol resembling a crescent moon and a star. The script is finely etched into the surface of the dried leaf.

| | |
|----|---|
| 85 | A |
|----|---|

85 A

Handwritten text in Balinese script on a palm leaf manuscript strip. The text is arranged in approximately 10 horizontal lines. The first line begins with a small symbol resembling a crescent moon and a star. The script is finely etched into the surface of the dried leaf.

USADHA DEWA
Pusat Dokumentasi
Dinas Kebudayaan Provinsi Bali ~ Indonesia

ප්ල

87

B

ප්ල
සුඛිනි මාග්ගා කුපු ඉපුනු කාති ව්ඛානු ව
" ප්ලිඤ්ඤා ප්ලිඤ්ඤා ප්ලිඤ්ඤා ප්ලිඤ්ඤා ප්ලිඤ්ඤා
පඤ්ඤා පඤ්ඤා පඤ්ඤා පඤ්ඤා පඤ්ඤා
පඤ්ඤා පඤ්ඤා පඤ්ඤා පඤ්ඤා පඤ්ඤා

සුඛිනි මාග්ගා කුපු ඉපුනු කාති ව්ඛානු ව
ප්ලිඤ්ඤා ප්ලිඤ්ඤා ප්ලිඤ්ඤා ප්ලිඤ්ඤා ප්ලිඤ්ඤා
පඤ්ඤා පඤ්ඤා පඤ්ඤා පඤ්ඤා පඤ්ඤා
පඤ්ඤා පඤ්ඤා පඤ්ඤා පඤ්ඤා පඤ්ඤා

ප්ල

88

A

සුඛිනි මාග්ගා කුපු ඉපුනු කාති ව්ඛානු ව
ප්ලිඤ්ඤා ප්ලිඤ්ඤා ප්ලිඤ්ඤා ප්ලිඤ්ඤා ප්ලිඤ්ඤා
පඤ්ඤා පඤ්ඤා පඤ්ඤා පඤ්ඤා පඤ්ඤා
පඤ්ඤා පඤ්ඤා පඤ්ඤා පඤ්ඤා පඤ්ඤා

සුඛිනි මාග්ගා කුපු ඉපුනු කාති ව්ඛානු ව
ප්ලිඤ්ඤා ප්ලිඤ්ඤා ප්ලිඤ්ඤා ප්ලිඤ්ඤා ප්ලිඤ්ඤා
පඤ්ඤා පඤ්ඤා පඤ්ඤා පඤ්ඤා පඤ්ඤා
පඤ්ඤා පඤ්ඤා පඤ්ඤා පඤ්ඤා පඤ්ඤා

USADHA DEWA
 Pusat Dokumentasi
 Dinas Kebudayaan Provinsi Bali ~ Indonesia

| | |
|----|----|
| පය | 89 |
| | B |

Handwritten text in Balinese script on a palm leaf manuscript. The text is arranged in two columns. The left column begins with the character 'ඨ' (ḍ) and contains approximately 10 lines of script. The right column contains approximately 10 lines of script. There are two circular holes visible on the leaf, one on each side.

| | |
|----|----|
| යං | 90 |
| | A |

Handwritten text in Balinese script on a palm leaf manuscript. The text is arranged in two columns. The left column contains approximately 10 lines of script. The right column contains approximately 10 lines of script. There are two circular holes visible on the leaf, one on each side.

USADHA DEWA
 Pusat Dokumentasi
 Dinas Kebudayaan Provinsi Bali ~ Indonesia

| | |
|----|----|
| no | 90 |
| | B |

Handwritten Balinese script on a palm leaf manuscript strip, divided into two columns by a central hole. The text is written in a traditional cursive style.

| | |
|----|----|
| no | 91 |
| | A |

Handwritten Balinese script on a palm leaf manuscript strip, divided into two columns by a central hole. The text is written in a traditional cursive style.

USADHA DEWA
Pusat Dokumentasi
Dinas Kebudayaan Provinsi Bali ~ Indonesia

| |
|----|
| 92 |
| B |

Handwritten Balinese script on palm leaf 92. The text is arranged in two columns. On the left side of the leaf, there is a small handwritten note: *304*.

| |
|----|
| 93 |
| A |

Handwritten Balinese script on palm leaf 93. The text is arranged in two columns.

USADHA DEWA
 Pusat Dokumentasi
 Dinas Kebudayaan Provinsi Bali ~ Indonesia

93

93

B

10

ຫຼື ບຸກຄົນ ທີ່ ຈຳນວນ ທີ່ ຈຳນວນ ທີ່ ຈຳນວນ
 ຈຳນວນ ທີ່ ຈຳນວນ ທີ່ ຈຳນວນ ທີ່ ຈຳນວນ
 ທີ່ ຈຳນວນ ທີ່ ຈຳນວນ ທີ່ ຈຳນວນ ທີ່ ຈຳນວນ
 ທີ່ ຈຳນວນ ທີ່ ຈຳນວນ ທີ່ ຈຳນວນ ທີ່ ຈຳນວນ

ທີ່ ຈຳນວນ ທີ່ ຈຳນວນ ທີ່ ຈຳນວນ ທີ່ ຈຳນວນ
 ທີ່ ຈຳນວນ ທີ່ ຈຳນວນ ທີ່ ຈຳນວນ ທີ່ ຈຳນວນ
 ທີ່ ຈຳນວນ ທີ່ ຈຳນວນ ທີ່ ຈຳນວນ ທີ່ ຈຳນວນ
 ທີ່ ຈຳນວນ ທີ່ ຈຳນວນ ທີ່ ຈຳນວນ ທີ່ ຈຳນວນ

94

94

A

ທີ່ ຈຳນວນ ທີ່ ຈຳນວນ ທີ່ ຈຳນວນ ທີ່ ຈຳນວນ
 ທີ່ ຈຳນວນ ທີ່ ຈຳນວນ ທີ່ ຈຳນວນ ທີ່ ຈຳນວນ
 ທີ່ ຈຳນວນ ທີ່ ຈຳນວນ ທີ່ ຈຳນວນ ທີ່ ຈຳນວນ
 ທີ່ ຈຳນວນ ທີ່ ຈຳນວນ ທີ່ ຈຳນວນ ທີ່ ຈຳນວນ

ທີ່ ຈຳນວນ ທີ່ ຈຳນວນ ທີ່ ຈຳນວນ ທີ່ ຈຳນວນ
 ທີ່ ຈຳນວນ ທີ່ ຈຳນວນ ທີ່ ຈຳນວນ ທີ່ ຈຳນວນ
 ທີ່ ຈຳນວນ ທີ່ ຈຳນວນ ທີ່ ຈຳນວນ ທີ່ ຈຳນວນ
 ທີ່ ຈຳນວນ ທີ່ ຈຳນວນ ທີ່ ຈຳນວນ ທີ່ ຈຳນວນ

USADHA DEWA
Pusat Dokumentasi
Dinas Kebudayaan Provinsi Bali ~ Indonesia

94
B

Handwritten Balinese script on a palm leaf. The text is arranged in two columns. The left column begins with a small symbol resembling a crescent moon and a star. The script is a form of Balinese used for religious or legal documents.

95
A

Handwritten Balinese script on a palm leaf. The text is arranged in two columns. The script is a form of Balinese used for religious or legal documents.

USADHA DEWA
 Pusat Dokumentasi
 Dinas Kebudayaan Provinsi Bali ~ Indonesia

| | |
|----|----|
| 59 | 95 |
| | B |

59
560
 1.

| | |
|----|----|
| 58 | 96 |
| | A |

58
560
 1.

USADHA DEWA
 Pusat Dokumentasi
 Dinas Kebudayaan Provinsi Bali ~ Indonesia

| | |
|---------|---------|
| 97
B | 97
B |
|---------|---------|

160
 ...
 ...
 ...
 ...

| | |
|---------|---------|
| 98
A | 98
A |
|---------|---------|

...
 ...
 ...
 ...

USADHA DEWA
 Pusat Dokumentasi
 Dinas Kebudayaan Provinsi Bali ~ Indonesia

| | |
|----|----|
| ꦮꦮ | 99 |
| | B |

...
 ...
 ...
 ...

| | |
|----|-----|
| ꦮꦮ | 100 |
| | A |

...
 ...
 ...
 ...

USADHA DEWA
 Pusat Dokumentasi
 Dinas Kebudayaan Provinsi Bali ~ Indonesia

| | |
|-----|-----|
| 100 | 100 |
| | B |

100.
 ...
 ...
 ...
 ...
 ...

| | |
|-----|-----|
| 101 | 101 |
| | A |

...
 ...
 ...
 ...
 ...

USADHA DEWA
Pusat Dokumentasi
Dinas Kebudayaan Provinsi Bali ~ Indonesia

| | |
|-----|-----|
| 101 | 101 |
| B | |

| | |
|----------------------|----------------------|
| 101
B
101
B | 101
B
101
B |
|----------------------|----------------------|

| | |
|-----|-----|
| 102 | 102 |
| A | |

| | |
|----------------------|----------------------|
| 102
A
102
A | 102
A
102
A |
|----------------------|----------------------|

USADHA DEWA
 Pusat Dokumentasi
 Dinas Kebudayaan Provinsi Bali ~ Indonesia

102
 B

Handwritten Balinese script on a palm leaf, consisting of two columns of text.

103
 A

Handwritten Balinese script on a palm leaf, consisting of two columns of text.

USADHA DEWA
 Pusat Dokumentasi
 Dinas Kebudayaan Provinsi Bali ~ Indonesia

| |
|-----|
| 103 |
| B |

Handwritten Balinese script on a palm leaf manuscript strip, divided into two columns. The script is written in a traditional style with dark ink on the natural brown color of the leaf.

| |
|-----|
| 104 |
| A |

Handwritten Balinese script on a palm leaf manuscript strip, divided into two columns. The script is written in a traditional style with dark ink on the natural brown color of the leaf.

USADHA DEWA
 Pusat Dokumentasi
 Dinas Kebudayaan Provinsi Bali ~ Indonesia

104
 B

Handwritten Balinese script on a palm leaf manuscript strip. The text is arranged in two columns. On the left side, there is a small handwritten note: "104B".

105
 A

Handwritten Balinese script on a palm leaf manuscript strip. The text is arranged in two columns. On the left side, there is a small handwritten note: "105A".

USADHA DEWA
 Pusat Dokumentasi
 Dinas Kebudayaan Provinsi Bali ~ Indonesia

| | |
|-----|-----|
| 105 | 105 |
| B | |

Handwritten Balinese script on a palm leaf manuscript strip. The text is arranged in two columns. On the right side of the strip, the number '5011' is handwritten.

| | |
|-----|-----|
| 106 | 106 |
| A | |

Handwritten Balinese script on a palm leaf manuscript strip. The text is arranged in two columns. On the right side of the strip, the number '5011' is handwritten.

USADHA DEWA
 Pusat Dokumentasi
 Dinas Kebudayaan Provinsi Bali ~ Indonesia

| | |
|-----|-----|
| 106 | 106 |
| B | |

Handwritten Balinese script on a palm leaf, divided into two columns. The left column begins with a small number '106' written in the margin. The script is densely packed and covers most of the leaf's surface.

| | |
|-----|-----|
| 107 | 107 |
| A | |

Handwritten Balinese script on a palm leaf, divided into two columns. The left column begins with a small number '107' written in the margin. The script is densely packed and covers most of the leaf's surface.

USADHA DEWA
 Pusat Dokumentasi
 Dinas Kebudayaan Provinsi Bali ~ Indonesia

| | |
|-----|-----|
| 107 | 107 |
| B | |

107
 ...
 ...
 ...
 ...
 ...

| | |
|-----|-----|
| 108 | 108 |
| A | |

108
 ...
 ...
 ...
 ...
 ...

USADHA DEWA
 Pusat Dokumentasi
 Dinas Kebudayaan Provinsi Bali ~ Indonesia

108
 B

၁၀၀၀
 ဣ၊ ဗဒါဒုပဏှ၊ ဣဉာ၊ ဣဒဗဏှ၊ ဗဒါ၊
 ဣဉာ၊ ဣဉာ၊ ဣဉာ၊ ဣဉာ၊ ဣဉာ၊ ဣဉာ၊
 ပဉာ၊ ဣဉာ၊ ဣဉာ၊ ဣဉာ၊ ဣဉာ၊ ဣဉာ၊
 ဣဉာ၊ ဣဉာ၊ ဣဉာ၊ ဣဉာ၊ ဣဉာ၊ ဣဉာ။ ၀။

ဣဉာ။ ဣဉာ။ ဣဉာ။ ဣဉာ။ ဣဉာ။ ဣဉာ။
 ဣဉာ။ ဣဉာ။ ဣဉာ။ ဣဉာ။ ဣဉာ။ ဣဉာ။
 ဣဉာ။ ဣဉာ။ ဣဉာ။ ဣဉာ။ ဣဉာ။ ဣဉာ။
 ဣဉာ။ ဣဉာ။ ဣဉာ။ ဣဉာ။ ဣဉာ။ ဣဉာ။

109
 A

ပဉာ၊ ဣဉာ၊ ဣဉာ၊ ဣဉာ၊ ဣဉာ၊ ဣဉာ၊
 ဣဉာ၊ ဣဉာ၊ ဣဉာ၊ ဣဉာ၊ ဣဉာ၊ ဣဉာ၊
 ဣဉာ၊ ဣဉာ၊ ဣဉာ၊ ဣဉာ၊ ဣဉာ၊ ဣဉာ။

ဣဉာ၊ ဣဉာ၊ ဣဉာ၊ ဣဉာ၊ ဣဉာ၊ ဣဉာ။
 ဣဉာ၊ ဣဉာ၊ ဣဉာ၊ ဣဉာ၊ ဣဉာ၊ ဣဉာ။
 ဣဉာ၊ ဣဉာ၊ ဣဉာ၊ ဣဉာ၊ ဣဉာ၊ ဣဉာ။
 ဣဉာ၊ ဣဉာ၊ ဣဉာ၊ ဣဉာ၊ ဣဉာ၊ ဣဉာ။

USADHA DEWA
 Pusat Dokumentasi
 Dinas Kebudayaan Provinsi Bali ~ Indonesia

| |
|---------|
| nr. 109 |
| B |

Handwritten Balinese script on a palm leaf manuscript strip. The text is arranged in two columns. On the left side of the strip, there is a small handwritten note: "109 B".

| |
|---------|
| nr. 110 |
| A |

Handwritten Balinese script on a palm leaf manuscript strip. The text is arranged in two columns. On the left side of the strip, there is a small handwritten note: "110 A".

USADHA DEWA
Pusat Dokumentasi
Dinas Kebudayaan Provinsi Bali ~ Indonesia

110
B

Handwritten Balinese script on a palm leaf manuscript strip, divided into two columns.

111
A

Handwritten Balinese script on a palm leaf manuscript strip, divided into two columns.

USADHA DEWA
 Pusat Dokumentasi
 Dinas Kebudayaan Provinsi Bali ~ Indonesia

111
 B

Handwritten Balinese script on a palm leaf manuscript strip, consisting of two columns of text.

112
 A

Handwritten Balinese script on a palm leaf manuscript strip, consisting of two columns of text.

USADHA DEWA
 Pusat Dokumentasi
 Dinas Kebudayaan Provinsi Bali ~ Indonesia

| | |
|--|-----|
| | 112 |
| | B |

| | |
|--|-----|
| | 113 |
| | A |

USADHA DEWA
 Pusat Dokumentasi
 Dinas Kebudayaan Provinsi Bali ~ Indonesia

| |
|-----|
| 113 |
| B |

Handwritten text in Balinese script on a palm leaf manuscript, starting with a small symbol on the left.

| |
|-----|
| 114 |
| A |

Handwritten text in Balinese script on a palm leaf manuscript.

USADHA DEWA
Pusat Dokumentasi
Dinas Kebudayaan Provinsi Bali ~ Indonesia

114
B

Handwritten Balinese script on a palm leaf manuscript, consisting of two columns of text.

115
A

Handwritten Balinese script on a palm leaf manuscript, consisting of two columns of text.

USADHA DEWA
 Pusat Dokumentasi
 Dinas Kebudayaan Provinsi Bali ~ Indonesia

115
 B

Handwritten Balinese script on a palm leaf, consisting of two columns of text.

116
 A

Handwritten Balinese script on a palm leaf, consisting of two columns of text.

USADHA DEWA
 Pusat Dokumentasi
 Dinas Kebudayaan Provinsi Bali ~ Indonesia

| |
|-----|
| 116 |
| B |

Handwritten Balinese script on a palm leaf manuscript strip, consisting of approximately 12 lines of text.

| |
|-----|
| 117 |
| A |

Handwritten Balinese script on a palm leaf manuscript strip, consisting of approximately 12 lines of text.

USADHA DEWA
 Pusat Dokumentasi
 Dinas Kebudayaan Provinsi Bali ~ Indonesia

117
 B

Handwritten Balinese script on a palm leaf manuscript strip, divided into two sections by a central hole. The text is written in a traditional cursive style.

118
 A

Handwritten Balinese script on a palm leaf manuscript strip, divided into two sections by a central hole. The text is written in a traditional cursive style.

USADHA DEWA
Pusat Dokumentasi
Dinas Kebudayaan Provinsi Bali ~ Indonesia

118
B

Handwritten text in Balinese script on a palm leaf, consisting of two columns of text.

119
A

Handwritten text in Balinese script on a palm leaf, consisting of two columns of text.

USADHA DEWA
 Pusat Dokumentasi
 Dinas Kebudayaan Provinsi Bali ~ Indonesia

| |
|-----|
| 119 |
| B |

119B
119B
 ...
 ...
 ...
 ...

| |
|-----|
| 120 |
| A |

120A
120A
 ...
 ...
 ...
 ...

USADHA DEWA
 Pusat Dokumentasi
 Dinas Kebudayaan Provinsi Bali ~ Indonesia

| | |
|-----|-----|
| 120 | 120 |
| | B |

Handwritten Balinese script on a palm leaf, consisting of two columns of text.

| | |
|-----|-----|
| 121 | 121 |
| | A |

Handwritten Balinese script on a palm leaf, consisting of two columns of text.

USADHA DEWA
 Pusat Dokumentasi
 Dinas Kebudayaan Provinsi Bali ~ Indonesia

121
 B

Handwritten Balinese script on a palm leaf, consisting of two columns of text.

122
 A

Handwritten Balinese script on a palm leaf, consisting of two columns of text.

USADHA DEWA
 Pusat Dokumentasi
 Dinas Kebudayaan Provinsi Bali ~ Indonesia

122
 B

Handwritten Balinese script on a palm leaf, divided into two sections by a central hole. The script is written in a traditional style.

123
 A

Handwritten Balinese script on a palm leaf, divided into two sections by a central hole. The script is written in a traditional style.

USADHA DEWA
 Pusat Dokumentasi
 Dinas Kebudayaan Provinsi Bali ~ Indonesia

| | |
|-----|-----|
| 123 | 123 |
| | B |

ꦱꦸꦛꦸꦢꦃꦢꦺꦮ
123

ꦱꦸꦛꦸꦛꦸꦢꦃꦢꦺꦮ
123

Balinese script on palm leaf 123 B. The text is written in two columns. The left column begins with a large initial character 'ꦱꦸꦛꦸꦛꦸꦢꦃꦢꦺꦮ'. The right column contains several lines of text, including a prominent 'ꦱꦸꦛꦸꦛꦸꦢꦃꦢꦺꦮ' at the top.

| | |
|-----|-----|
| 124 | 124 |
| | A |

ꦱꦸꦛꦸꦛꦸꦢꦃꦢꦺꦮ
124

ꦱꦸꦛꦸꦛꦸꦢꦃꦢꦺꦮ
124

Balinese script on palm leaf 124 A. The text is written in two columns. The left column begins with a large initial character 'ꦱꦸꦛꦸꦛꦸꦢꦃꦢꦺꦮ'. The right column contains several lines of text, including a prominent 'ꦱꦸꦛꦸꦛꦸꦢꦃꦢꦺꦮ' at the top.

USADHA DEWA
 Pusat Dokumentasi
 Dinas Kebudayaan Provinsi Bali ~ Indonesia

| |
|-----|
| 124 |
| B |

Handwritten Balinese script on a palm leaf, consisting of two columns of text.

| |
|-----|
| 125 |
| A |

Handwritten Balinese script on a palm leaf, consisting of two columns of text.

USADHA DEWA
Pusat Dokumentasi
Dinas Kebudayaan Provinsi Bali ~ Indonesia

| |
|-----|
| 125 |
| B |

Handwritten text in Balinese script on a palm leaf. The text is arranged in two columns. On the right side of the leaf, the number '121' is written in pencil.

| |
|-----|
| 126 |
| A |

Handwritten text in Balinese script on a palm leaf. The text is arranged in two columns. On the right side of the leaf, the number '121' is written in pencil.

USADHA DEWA
Pusat Dokumentasi
Dinas Kebudayaan Provinsi Bali ~ Indonesia

| |
|-----|
| 128 |
| B |

Handwritten text in Balinese script on a palm leaf, with a small hole on the left and right sides. The text is arranged in two columns. On the right side, the number '871' is written in the margin.

| |
|-----|
| 129 |
| A |

Handwritten text in Balinese script on a palm leaf, with a small hole on the left and right sides. The text is arranged in two columns. On the right side, the number '871' is written in the margin.

USADHA DEWA
 Pusat Dokumentasi
 Dinas Kebudayaan Provinsi Bali ~ Indonesia

| | |
|-----|-----|
| 131 | 131 |
| | B |

Handwritten Balinese script on a palm leaf manuscript strip, divided into two columns. The script is finely etched and runs horizontally across the length of the leaf. The right side of the leaf has a small handwritten number '141' in the margin.

| | |
|-----|-----|
| 132 | 132 |
| | A |

Handwritten Balinese script on a palm leaf manuscript strip, divided into two columns. The script is finely etched and runs horizontally across the length of the leaf. The right side of the leaf has a small handwritten number '141' in the margin.

USADHA DEWA
 Pusat Dokumentasi
 Dinas Kebudayaan Provinsi Bali ~ Indonesia

133
 B

Handwritten Balinese script on a palm leaf, consisting of two columns of text.

134
 A

Handwritten Balinese script on a palm leaf, consisting of two columns of text.

USADHA DEWA
Pusat Dokumentasi
Dinas Kebudayaan Provinsi Bali ~ Indonesia

134
B

Handwritten Balinese script on a palm leaf, consisting of two columns of text.

135
A

Handwritten Balinese script on a palm leaf, consisting of two columns of text.

USADHA DEWA
Pusat Dokumentasi
Dinas Kebudayaan Provinsi Bali ~ Indonesia

| | | |
|----------|--|---|
| 135
B | <p>135 B</p> <p>Handwritten Balinese script on a palm leaf, starting with a small symbol resembling '၂၅၅'.</p> | <p>Handwritten Balinese script on a palm leaf, starting with a small symbol resembling '၂၅၅'.</p> |
|----------|--|---|

| | | |
|----------|---|--|
| 136
A | <p>136 A</p> <p>Handwritten Balinese script on a palm leaf.</p> | <p>Handwritten Balinese script on a palm leaf.</p> |
|----------|---|--|

USADHA DEWA
 Pusat Dokumentasi
 Dinas Kebudayaan Provinsi Bali ~ Indonesia

136
 B

Handwritten Balinese script on a palm leaf manuscript strip. The text is arranged in two columns. On the left side of the strip, there is a handwritten number '29' and a small circular hole. On the right side, there is a handwritten number '92' and another circular hole.

137
 A

Handwritten Balinese script on a palm leaf manuscript strip. The text is arranged in two columns. On the left side of the strip, there is a handwritten number '29' and a small circular hole. On the right side, there is a handwritten number '92' and another circular hole.

USADHA DEWA
 Pusat Dokumentasi
 Dinas Kebudayaan Provinsi Bali ~ Indonesia

| | |
|-----|-----|
| 137 | 137 |
| | B |

Handwritten Balinese script on a palm leaf. The text is arranged in approximately 10 horizontal lines. On the far right, the number '137' is handwritten in blue ink. There are two circular holes punched through the leaf for binding.

| | |
|-----|-----|
| 138 | 138 |
| | A |

Handwritten Balinese script on a palm leaf. The text is arranged in approximately 10 horizontal lines. On the far right, the number '138' is handwritten in blue ink. There are two circular holes punched through the leaf for binding.

USADHA DEWA
 Pusat Dokumentasi
 Dinas Kebudayaan Provinsi Bali ~ Indonesia

| | |
|----|-----|
| no | 140 |
| | B |

100
211

 ...
 ...
 ...
 ...
 ...

| | |
|----|-----|
| no | 141 |
| | A |

211

 ...
 ...
 ...
 ...

USADHA DEWA
 Pusat Dokumentasi
 Dinas Kebudayaan Provinsi Bali ~ Indonesia

141
B

Handwritten Balinese script on a palm leaf, divided into two sections by a central hole. The text is written in a traditional style.

142
A

Handwritten Balinese script on a palm leaf, divided into two sections by a central hole. The text is written in a traditional style.

USADHA DEWA
 Pusat Dokumentasi
 Dinas Kebudayaan Provinsi Bali ~ Indonesia

142
 B

Handwritten Balinese script on a palm leaf, likely a religious or historical text. The script is arranged in approximately 10 horizontal lines across the length of the leaf. There are two circular holes visible on the leaf, one near the left end and one near the right end. A small handwritten mark is visible at the top right corner of the leaf.

143
 A

Handwritten Balinese script on a palm leaf, similar to the one above. The script is arranged in approximately 10 horizontal lines. There are two circular holes visible on the leaf, one near the left end and one near the right end. A small handwritten mark is visible at the top right corner of the leaf.

USADHA DEWA
Pusat Dokumentasi
Dinas Kebudayaan Provinsi Bali ~ Indonesia

144
B.

Handwritten Balinese script on a palm leaf, consisting of two columns of text.

145
A.

Handwritten Balinese script on a palm leaf, consisting of two columns of text.

USADHA DEWA
 Pusat Dokumentasi
 Dinas Kebudayaan Provinsi Bali ~ Indonesia

| | |
|-----|-----|
| 145 | 145 |
| B | |

145
 ...
 ...
 ...
 ...
 ...

| | |
|-----|-----|
| 146 | 146 |
| A | |

146
 ...
 ...
 ...
 ...

USADHA DEWA
 Pusat Dokumentasi
 Dinas Kebudayaan Provinsi Bali ~ Indonesia

| |
|-----|
| 146 |
| B |

146
911

...
 ...
 ...
 ...
 ...

| |
|-----|
| 147 |
| A |

912

...
 ...
 ...
 ...

USADHA DEWA
 Pusat Dokumentasi
 Dinas Kebudayaan Provinsi Bali ~ Indonesia

| |
|----------|
| 147 |
| 147
B |

147
147

1. ...
 2. ...
 3. ...

| |
|----------|
| 148 |
| 148
A |

148
148

1. ...
 2. ...
 3. ...

USADHA DEWA
 Pusat Dokumentasi
 Dinas Kebudayaan Provinsi Bali ~ Indonesia

| | | | |
|-----|-----|--|---|
| 149 | 149 | <p> 1. ...
 ...
 ...
 ... </p> | <p> ...
 ...
 ...
 ... </p> |
|-----|-----|--|---|

| | | | |
|-----|-----|--|---|
| 150 | 150 | <p> 1. ...
 ...
 ...
 ... </p> | <p> ...
 ...
 ...
 ... </p> |
|-----|-----|--|---|

USADHA DEWA
Pusat Dokumentasi
Dinas Kebudayaan Provinsi Bali ~ Indonesia

| | |
|------|-----|
| 1790 | 150 |
| | B |

Handwritten text on a palm leaf manuscript strip, likely in Balinese script. The text is arranged in two columns. The left column begins with a small symbol resembling a circle with a dot inside, followed by several lines of script. The right column also begins with a similar symbol and contains several lines of script. The leaf shows signs of age and wear.

| | |
|------|-----|
| 1791 | 151 |
| | A |

Handwritten text on a palm leaf manuscript strip, likely in Balinese script. The text is arranged in two columns. The left column begins with a small symbol resembling a circle with a dot inside, followed by several lines of script. The right column also begins with a similar symbol and contains several lines of script. The leaf shows signs of age and wear.

USADHA DEWA
Pusat Dokumentasi
Dinas Kebudayaan Provinsi Bali ~ Indonesia

151

151

B

Handwritten Balinese text at the start of the palm leaf.

Handwritten Balinese text on the left side of the palm leaf.

Handwritten Balinese text on the right side of the palm leaf.

152

152

A

Handwritten Balinese text on the left side of the palm leaf.

Handwritten Balinese text on the right side of the palm leaf.

USADHA DEWA
 Pusat Dokumentasi
 Dinas Kebudayaan Provinsi Bali ~ Indonesia

152B

152
B

Handwritten Balinese script on a palm leaf, consisting of two columns of text. The script is finely etched and runs horizontally across the length of the leaf. There are two circular holes on the leaf, one on each side, used for binding.

153A

153
A

Handwritten Balinese script on a palm leaf, consisting of two columns of text. The script is finely etched and runs horizontally across the length of the leaf. There are two circular holes on the leaf, one on each side, used for binding.

USADHA DEWA
 Pusat Dokumentasi
 Dinas Kebudayaan Provinsi Bali ~ Indonesia

155
 B

Handwritten Balinese script on a palm leaf, consisting of two columns of text.

156
 A

Handwritten Balinese script on a palm leaf, consisting of two columns of text.

USADHA DEWA
 Pusat Dokumentasi
 Dinas Kebudayaan Provinsi Bali ~ Indonesia

156
 B

Handwritten Balinese script on a palm leaf, consisting of two columns of text. The script is finely etched and runs horizontally across the length of the leaf. There are two circular holes visible on the leaf, one on each side, used for binding.

157
 A

Handwritten Balinese script on a palm leaf, consisting of two columns of text. The script is finely etched and runs horizontally across the length of the leaf. There are two circular holes visible on the leaf, one on each side, used for binding.

USADHA DEWA
 Pusat Dokumentasi
 Dinas Kebudayaan Provinsi Bali ~ Indonesia

| |
|----------|
| 157 |
| 157
B |

...
 ...
 ...
 ...

| |
|----------|
| 158 |
| 158
A |

...
 ...
 ...
 ...

USADHA DEWA
 Pusat Dokumentasi
 Dinas Kebudayaan Provinsi Bali ~ Indonesia

| | |
|-----|-----|
| 160 | 160 |
| B | |

160 B

Handwritten text on palm leaf 160 B (Balinese script):

Handwritten text on palm leaf 160 B (Indonesian transcription):

Handwritten text on palm leaf 160 B (English transcription):

| | |
|-----|-----|
| 161 | 161 |
| A | |

161 A

Handwritten text on palm leaf 161 A (Balinese script):

Handwritten text on palm leaf 161 A (Indonesian transcription):

Handwritten text on palm leaf 161 A (English transcription):

USADHA DEWA
 Pusat Dokumentasi
 Dinas Kebudayaan Provinsi Bali ~ Indonesia

161
 B

Handwritten Balinese script on a palm leaf, consisting of two columns of text. The script is finely etched and runs horizontally across the length of the leaf. There are two circular holes on the leaf, one on the left and one on the right, used for binding.

162
 A

Handwritten Balinese script on a palm leaf, consisting of two columns of text. The script is finely etched and runs horizontally across the length of the leaf. There are two circular holes on the leaf, one on the left and one on the right, used for binding.

USADHA DEWA
 Pusat Dokumentasi
 Dinas Kebudayaan Provinsi Bali ~ Indonesia

162
 B

Handwritten Balinese script on a palm leaf. The text is arranged in two columns. On the right side of the leaf, there is a handwritten number '291'.

163
 A

Handwritten Balinese script on a palm leaf. The text is arranged in two columns. On the right side of the leaf, there is a handwritten number '311'.

USADHA DEWA
Pusat Dokumentasi
Dinas Kebudayaan Provinsi Bali ~ Indonesia

163

163

B

Handwritten Balinese script on a palm leaf manuscript strip, divided into two columns. The script is finely etched and runs horizontally across the leaf.

164

164

A

Handwritten Balinese script on a palm leaf manuscript strip, divided into two columns. The script is finely etched and runs horizontally across the leaf.

USADHA DEWA
 Pusat Dokumentasi
 Dinas Kebudayaan Provinsi Bali ~ Indonesia

164
 B

Handwritten Balinese script on a palm leaf manuscript strip. The text is arranged in two columns. On the right side of the strip, the number '164' is handwritten in ink.

165
 A

Handwritten Balinese script on a palm leaf manuscript strip. The text is arranged in two columns. On the right side of the strip, the number '165' is handwritten in ink.

USADHA DEWA
 Pusat Dokumentasi
 Dinas Kebudayaan Provinsi Bali ~ Indonesia

165
 B

Handwritten Balinese script on a palm leaf manuscript strip. The text is arranged in two columns, with a small number '691' written in the right margin. The script is finely etched into the surface of the dried leaf.

166
 A

Handwritten Balinese script on a palm leaf manuscript strip. The text is arranged in two columns, with a small number '691' written in the right margin. The script is finely etched into the surface of the dried leaf.

USADHA DEWA
 Pusat Dokumentasi
 Dinas Kebudayaan Provinsi Bali ~ Indonesia

166
 B

Handwritten Balinese script on a palm leaf manuscript strip, divided into two columns by a central hole. The script is written in a traditional style with dark ink.

167
 A

Handwritten Balinese script on a palm leaf manuscript strip, divided into two columns by a central hole. The script is written in a traditional style with dark ink.

USADHA DEWA
 Pusat Dokumentasi
 Dinas Kebudayaan Provinsi Bali ~ Indonesia

167
 B

Handwritten Balinese script on a palm leaf manuscript strip, consisting of two columns of text.

168
 A

Handwritten Balinese script on a palm leaf manuscript strip, consisting of two columns of text.

USADHA DEWA
 Pusat Dokumentasi
 Dinas Kebudayaan Provinsi Bali ~ Indonesia

168
 B

Handwritten Balinese script on a palm leaf manuscript strip, divided into two columns by a central hole. The script is written in a traditional style with dark ink.

169
 A

Handwritten Balinese script on a palm leaf manuscript strip, divided into two columns by a central hole. The script is written in a traditional style with dark ink.

USADHA DEWA
 Pusat Dokumentasi
 Dinas Kebudayaan Provinsi Bali ~ Indonesia

169
 B

Handwritten Balinese script on a palm leaf, consisting of two columns of text.

170
 A

Handwritten Balinese script on a palm leaf, consisting of two columns of text.

USADHA DEWA
 Pusat Dokumentasi
 Dinas Kebudayaan Provinsi Bali ~ Indonesia

| |
|-----|
| 171 |
| B |

...
 ...
 ...
 ...
 ...

| |
|-----|
| 172 |
| A |

...
 ...
 ...
 ...
 ...

USADHA DEWA
 Pusat Dokumentasi
 Dinas Kebudayaan Provinsi Bali ~ Indonesia

| | |
|-----|---|
| 172 | B |
| | |

...
 ...
 ...
 ...

| | |
|-----|---|
| 173 | A |
| | |

...
 ...
 ...
 ...

USADHA DEWA
 Pusat Dokumentasi
 Dinas Kebudayaan Provinsi Bali ~ Indonesia

173
 B

Handwritten Balinese script on a palm leaf manuscript strip. The text is arranged in approximately 10 horizontal lines across the length of the leaf. The script is a traditional form of Balinese writing.

174
 A

Handwritten Balinese script on a palm leaf manuscript strip. The text is arranged in approximately 10 horizontal lines across the length of the leaf. The script is a traditional form of Balinese writing.

USADHA DEWA
 Pusat Dokumentasi
 Dinas Kebudayaan Provinsi Bali ~ Indonesia

175
 B

Handwritten Balinese script on a palm leaf. The text is arranged in two columns. On the right side of the leaf, the number '175' is handwritten in blue ink. On the left side, there is a small handwritten mark that appears to be '175B'.

176
 A

Handwritten Balinese script on a palm leaf. The text is arranged in two columns. On the right side of the leaf, the number '176' is handwritten in blue ink. On the left side, there is a small handwritten mark that appears to be '176A'.

USADHA DEWA
 Pusat Dokumentasi
 Dinas Kebudayaan Provinsi Bali ~ Indonesia

176
 B

Handwritten Balinese script on a palm leaf, consisting of two columns of text. The script is finely etched and arranged in approximately 10 lines across the length of the leaf. There are two circular holes visible on the leaf, one on each side, used for binding.

177
 A

Handwritten Balinese script on a palm leaf, consisting of two columns of text. The script is finely etched and arranged in approximately 10 lines across the length of the leaf. There are two circular holes visible on the leaf, one on each side, used for binding.

USADHA DEWA
 Pusat Dokumentasi
 Dinas Kebudayaan Provinsi Bali ~ Indonesia

183
B

Handwritten Balinese script on a palm leaf manuscript strip, divided into two sections by a central hole. The script is written in a traditional style.

184
A

Handwritten Balinese script on a palm leaf manuscript strip, divided into two sections by a central hole. The script is written in a traditional style.

USADHA DEWA
 Pusat Dokumentasi
 Dinas Kebudayaan Provinsi Bali ~ Indonesia

185
 B

Handwritten Balinese script on a palm leaf, consisting of two columns of text.

186
 A

Handwritten Balinese script on a palm leaf, consisting of two columns of text.

USADHA DEWA
Pusat Dokumentasi
Dinas Kebudayaan Provinsi Bali ~ Indonesia

187
B

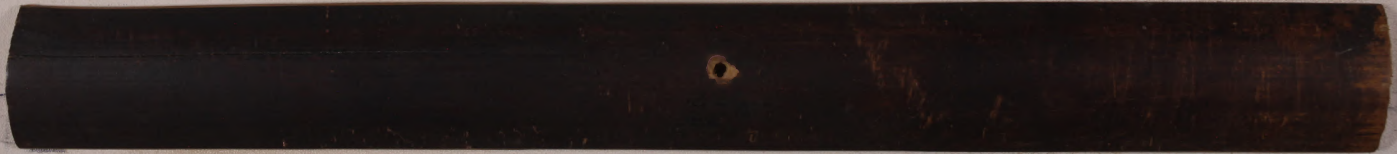
Handwritten Balinese script on a palm leaf, consisting of two columns of text.

188
A

Handwritten Balinese script on a palm leaf, consisting of two columns of text.

USADHA DEWA
Pusat Dokumentasi
Dinas Kebudayaan Provinsi Bali ~ Indonesia

| | |
|------|-----|
| ꦱꦸꦃꦠ | 189 |
| | B |



USADHA DEWA
Pusat Dokumentasi
Dinas Kebudayaan Provinsi Bali ~ Indonesia

