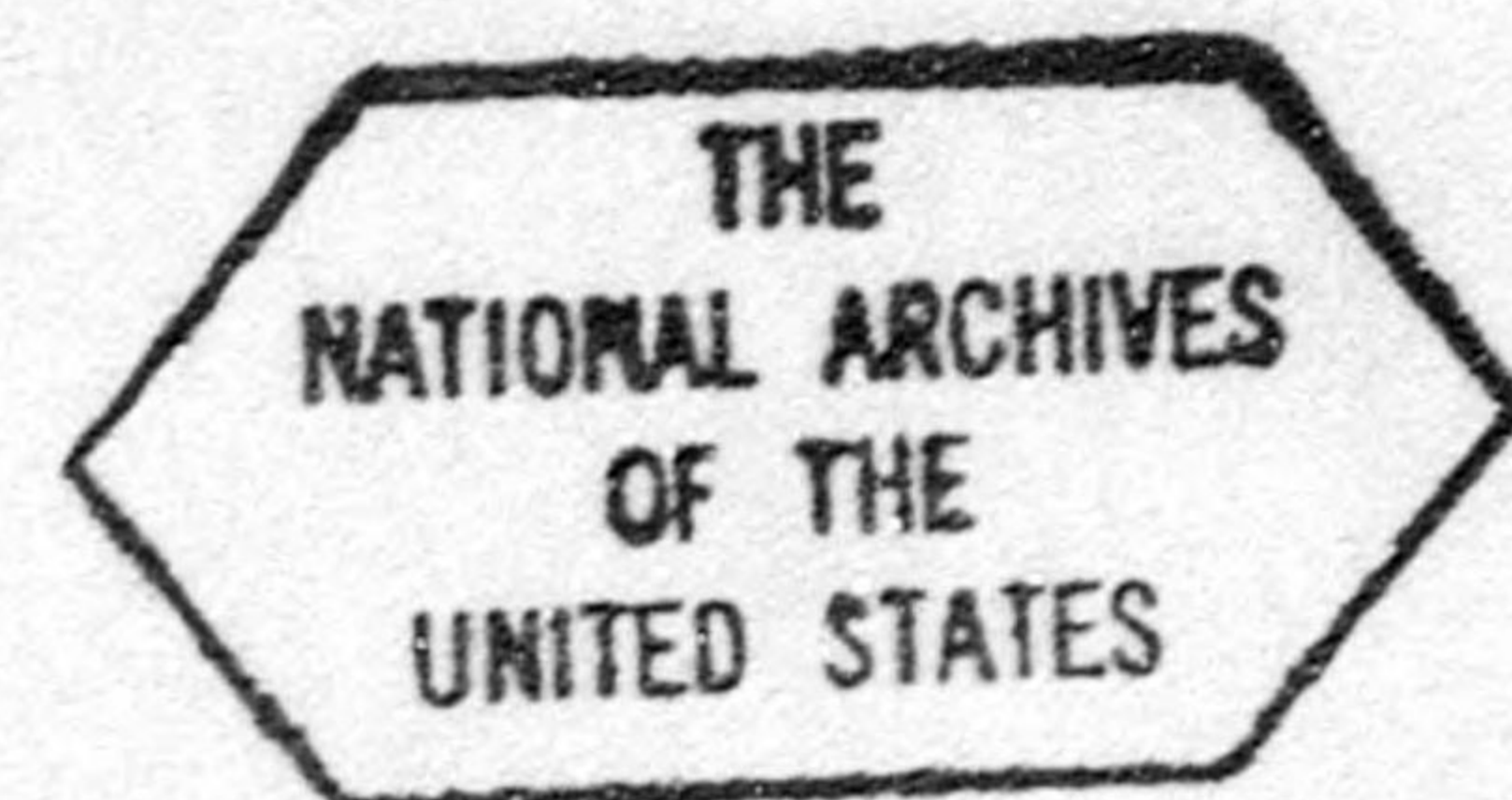


GHQ/SCAP Records(RG 331)  
Description of contents



- (1) Box no. 2061  
(2) Folder title/number: (44)  
Diamond Sha

(3) Date: Oct. 1947

(4) Subject:

Classification	Type of record
340	C, S

(5) Item description and comment:

(6) Reproduction:  Yes  No

(7) Film no.

Sheet no.



150  
TOM  
DAIYAMONDO SHA

Morning

- 10 -

ANOTHER LIBERAL  
TO BE PURGED

Jiji Press

TOKYO, Oct. 21.--Kenkichi Ishiyama, publisher of the influential economic journal "Diamond" and Liberal member of the House of Representatives, is expected to be among over 200 persons against whom the Central Screening Commission's purge rulings will be made public Wednesday, Jiji Press reliably learned this evening.

The Government is expected to make public a regular announcement tomorrow of CSC purge decisions affecting more than 200 persons, including those disqualified for public office under the Butokukai. (Martial Arts Society" Purge program.)

Representative Ishiyama's expected purge will create two vacancies in the three Lower House members elected from the first district in Niigata Prefecture as Reikichi Kita, Liberal from the same electoral district, was previously purged, it was

(more)



- 11 -

Morning

pointed out in the Diet circles.

The creation of two vacancies in the electoral district automatically calls for a by-election for the House of Representatives, which will be the first to be held after the enforcement of the new Constitution, it was also pointed out.

-----

CORRECTION:

On page 12 (GOV'T RAILWAY WORKERS UNION DENIES SPLIT), second line in lead paragraph should read:

.....last Sunday meant the split of the union...  
instead of as sent.

Sorry

-----

END MORNING EDITION

y/n

Wednesday, October 22, 1947



Position	Name	Assumption Date of Resignation
Representative Director, Chairman of the Board of Directors	Kenkichi Ishiyama	June, 1940 ~ to date 1st
Representative Director, President	Kenkichi Ishiyama	May, 1913 ~ June, 1940 1st
Representative Director, President	Tometa Abe	June, 1940 ~ December, 1942
Representative Director, President	Ryūshichi Nozaki	December, 1942 to date 1st
Director	Shūsuke Aiza	June, 1940 ~ December, 1943 (Dead)
Director	Shōzō Minagawa	June, 1913 ~ September, 1940 (Dead)
Director	Ryūshichi Nozaki	June, 1936 ~ December, 1942
Director	Mataji Sakai	June, 1936 ~ June, 1947 (Dead)
Director	Yūzō Hara	June 1936 ~ September, 1943
Director	Minao Ishiyama	June, 1939 ~ to date
Director	Miekichi Nakamura	December, 1940 ~
Director	Hatsutarō Hirai	June, 1940 ~ March, 1944 (Dead) 1st
Chief Editor of DIAMOND	Hidemasa Akabori	April, 1934 ~ June, 30, 1940 1st
Chief Editor of DIAMOND	Tetsuji Hamaguchi	<del>June, 1940</del> ~ December, 1945
Chief Editor of KEIZAI MAGAZINE	Atsushi Kawashima	May, 1938 ~ February, 1944 1st
Head of Publishing Department	Minao Ishiyama	April, 1929 ~ June 30, 1945
Head of Department of Business Conditions Research	Yūzō Hara	September, 1930 ~ September, 1943
Head of Osaka Branch	Mataji Sakai	April, 1929 ~ June, 1947 (Dead)
Head of Managing Department	Shōzō Minagawa	April, 1939 ~ September, 1940 (Dead)



Date of Resignation	Assumption	Present Profession	Present Address	Remarks
June, 1940 ~ to date 1st		Chairman of the Board of Directors	No. 3390, Ōi Kurata-machi Shinagawa-ku, Tokyo.	
May, 1913 ~ June, 1st 1940 1st		Chairman of the Board of Directors	No. 3390, Ōi Kurata-machi Shinagawa-ku, Tokyo.	
June, 1940 ~ December, 1942		Retired, without Profession	No. 1003, 5-chōme, Nishi-Shinagawa, Shinagawa-ku, Tokyo.	
December, 1942 to date 1st		Representative Director, President	No. 129, Takaishi-machi, Kawasaki City, Kanagawa Prefecture	
June, 1940 ~ December, 1943 (Dead)				
June, 1913 ~ September 1940 (Dead)				
June, 1936 ~ December 1942	1st	Representative Director, President	No. 129, Takaishi-machi, Kawasaki City, Kanagawa Prefecture	
June, 1936 ~ June, 1947 (Dead)				
June 1936 ~ September, 1943		Retired, President of KEIZAI SHINSHI-Sha	No. 28, Higashi 4 chōme, Magome-machi, Ōta-ku, Tokyo.	
June, 1939 ~ to date		Director	No. 19, Nakane-machi Meguro-ku, Tokyo.	
December, 1940 ~		Director	No. 1038, Okura-machi, Setagaya-ku, Tokyo.	
June, 1940 ~ March, 1944 (Dead)				
April, 1934 ~ June, 30, 1940 1st		Retired, without Profession	<del>Unknown</del> 498, 2-chōme Shinagawa, Toshima-ku Tokyo	
<del>June, 1940 ~</del> December, 1945		Retired, without Profession	Kushimoto-machi, Nishimure-gun, Wakayama Prefecture	
May, 1938 ~ February 1944 1st	28th	Retired	<del>Unknown</del> 638, 4 chōme Setagaya, Setagaya-ku, Tokyo	
April, 1929 ~ June 30, 1945		Director	No. 19, Nakane-machi, Meguro-ku, Tokyo.	
September, 1930 ~ September, 1943		Retired, President of KEIZAI SHINSHI-Sha	No. 28, Higashi 4 chōme, Magome-machi, Ōta-ku, Tokyo.	
April, 1929 ~ June, 1947 (Dead)				
April, 1939 ~ September, 1940 (Dead)				



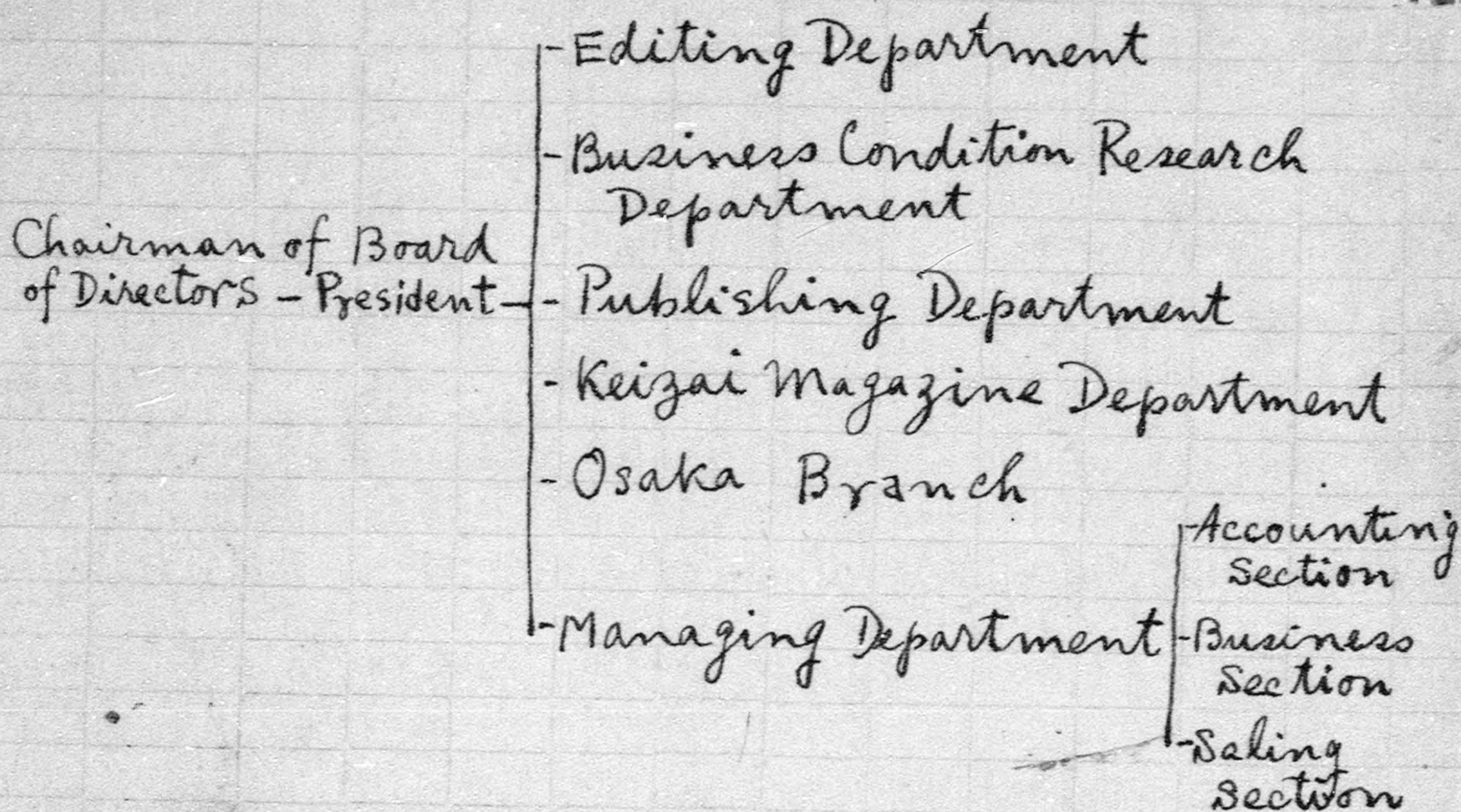
Our company was established by Kenkichi Ishiyama, Present Chairman of Board of Directors. As the scale is small, it is not necessary the system of position. Actually, Ishiyama has taken the responsibility and managed in both editing and managing through the period of President and Chairman.

1. "Diamond" is chiefly constructed by the inside manuscripts. So, each writer works independently and chief editor is only to arrange their works on business.

2. "Keizai Magazine" was chiefly constructed by the outside manuscripts. So, chief editor had an original authority on editing and to a request of manuscripts.



System of Board of Economic Journal  
"Diamond" Co.



\* ~~System of Chairman of Board of Directors was~~  
~~set up since June 1940. Then, President~~  
~~became Chairman and one of Vice-President~~  
~~became President.~~