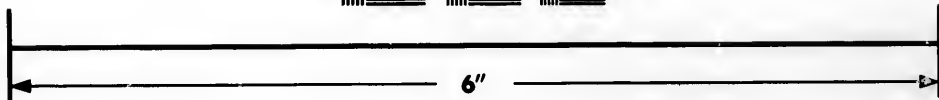
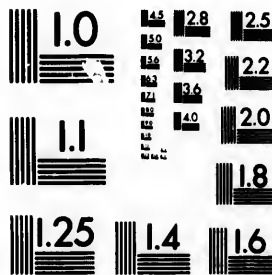


**IMAGE EVALUATION
TEST TARGET (MT-3)**



**Photographic
Sciences
Corporation**

23 WEST MAIN STREET
WEBSTER, N.Y. 14580
(716) 672-4503

16
18
20
22
25
28
32
36

**CIHM/ICMH
Microfiche
Series.**

**CIHM/ICMH
Collection de
microfiches.**



Canadian Institute for Historical Microreproductions / Institut canadien de microreproductions historiques

10
12
16
20
24
28

© 1983

Technical and Bibliographic Notes/Notes techniques et bibliographiques

The Institute has attempted to obtain the best original copy available for filming. Features of this copy which may be bibliographically unique, which may alter any of the images in the reproduction, or which may significantly change the usual method of filming, are checked below.

L'Institut a microfilmé le meilleur exemplaire qu'il lui a été possible de se procurer. Les détails de cet exemplaire qui sont peut-être uniques du point de vue bibliographique, qui peuvent modifier une image reproduite, ou qui peuvent exiger une modification dans la méthode normale de filmage sont indiqués ci-dessous.

- | | |
|---|---|
| <input type="checkbox"/> Coloured covers/
Couverture de couleur | <input type="checkbox"/> Coloured pages/
Pages de couleur |
| <input type="checkbox"/> Covers damaged/
Couverture endommagée | <input type="checkbox"/> Pages damaged/
Pages endommagées |
| <input type="checkbox"/> Covers restored and/or laminated/
Couverture restaurée et/ou pelliculée | <input type="checkbox"/> Pages restored and/or laminated/
Pages restaurées et/ou pelliculées |
| <input type="checkbox"/> Cover title missing/
Le titre de couverture manque | <input checked="" type="checkbox"/> Pages discoloured, stained or foxed/
Pages décolorées, tachetées ou piquées |
| <input type="checkbox"/> Coloured maps/
Cartes géographiques en couleur | <input type="checkbox"/> Pages detached/
Pages détachées |
| <input type="checkbox"/> Coloured ink (i.e. other than blue or black)/
Encre de couleur (i.e. autre que bleue ou noire) | <input checked="" type="checkbox"/> Showthrough/
Transparence |
| <input type="checkbox"/> Coloured plates and/or illustrations/
Planches et/ou illustrations en couleur | <input type="checkbox"/> Quality of print varies/
Qualité inégale de l'impression |
| <input type="checkbox"/> Bound with other material/
Relié avec d'autres documents | <input type="checkbox"/> Includes supplementary material/
Comprend du matériel supplémentaire |
| <input checked="" type="checkbox"/> Tight binding may cause shadows or distortion along interior margin/
La reliure serrée peut causer de l'ombre ou de la distortion le long de la marge intérieure | <input type="checkbox"/> Only edition available/
Seule édition disponible |
| <input type="checkbox"/> Blank leaves added during restoration may appear within the text. Whenever possible, these have been omitted from filming/
Il se peut que certaines pages blanches ajoutées lors d'une restauration apparaissent dans le texte, mais, lorsque cela était possible, ces pages n'ont pas été filmées. | <input type="checkbox"/> Pages wholly or partially obscured by errata slips, tissues, etc., have been refilmed to ensure the best possible image/
Les pages totalement ou partiellement obscurcies par un feuillet d'errata, une pelure, etc., ont été filmées à nouveau de façon à obtenir la meilleure image possible. |
| <input type="checkbox"/> Additional comments:
Commentaires supplémentaires: | |

This item is filmed at the reduction ratio checked below/
Ce document est filmé au taux de réduction indiqué ci-dessous.

10X	12X	14X	16X	18X	20X	22X	24X	26X	28X	30X	32X
				X							

The copy filmed here has been reproduced thanks to the generosity of:

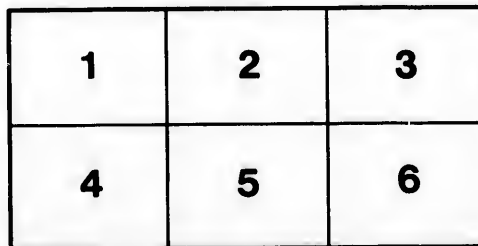
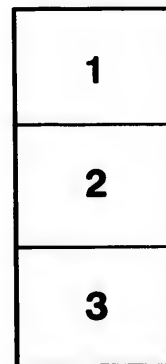
Izaak Walton Killam Memorial Library
Dalhousie University

The images appearing here are the best quality possible considering the condition and legibility of the original copy and in keeping with the filming contract specifications.

Original copies in printed paper covers are filmed beginning with the front cover and ending on the last page with a printed or illustrated impression, or the back cover when appropriate. All other original copies are filmed beginning on the first page with a printed or illustrated impression, and ending on the last page with a printed or illustrated impression.

The last recorded frame on each microfiche shall contain the symbol \rightarrow (meaning "CONTINUED"), or the symbol ∇ (meaning "END"), whichever applies.

Maps, plates, charts, etc., may be filmed at different reduction ratios. Those too large to be entirely included in one exposure are filmed beginning in the upper left hand corner, left to right and top to bottom, as many frames as required. The following diagrams illustrate the method:



L'exemplaire filmé fut reproduit grâce à la générosité de:

Izaak Walton Killam Memorial Library
Dalhousie University

Les images suivantes ont été reproduites avec le plus grand soin, compte tenu de la condition et de la netteté de l'exemplaire filmé, et en conformité avec les conditions du contrat de filmage.

Les exemplaires originaux dont la couverture en papier est imprimée sont filmés en commençant par le premier plat et en terminant soit par la dernière page qui comporte une empreinte d'impression ou d'illustration, soit par le second plat, selon le cas. Tous les autres exemplaires originaux sont filmés en commençant par la première page qui comporte une empreinte d'impression ou d'illustration et en terminant par la dernière page qui comporte une telle empreinte.

Un des symboles suivants apparaîtra sur la dernière image de chaque microfiche, selon le cas: le symbole \rightarrow signifie "A SUIVRE", le symbole ∇ signifie "FIN".

Les cartes, planches, tableaux, etc., peuvent être filmés à des taux de réduction différents. Lorsque le document est trop grand pour être reproduit en un seul cliché, il est filmé à partir de l'angle supérieur gauche, de gauche à droite, et de haut en bas, en prenant le nombre d'images nécessaire. Les diagrammes suivants illustrent la méthode.

ire
détails
es du
modifier
er une
filmage

ses

y errata
d to

nt
ne pelure,
çon à



2 August 1825

THE FARMER'S ALMANACK.

FOR THE YEAR OF OUR LORD

1825;

Being the first, after, Bissextile, or Leap Year,

CALCULATED FOR THE MERIDIAN OF HALIFAX IN NOVA SCOTIA

But will serve for any part of the Province.

Comprising whatever is deemed Essential in a Work of this Kind.



May plentiful crops—a Sun ever mild
A spirit of kindness—and friendship sincere
Transform to an Eden our forests so wild
And sympathy only occasion a tear.
May gratitude huddle the flame of devotion;
And love reign triumphant through earth and the ocean.

HALIFAX;

Printed and Sold at the **Free Press Office**, and at the Store of

Smith & Deane

Price 6s. Dozen—2s. single

Directions for coming up Halifax Harbour, taken from the printed Directions in the Custom-House at Halifax.

SAMBRO island and light house is in latitude 44 deg. 30 min. N and longitude 63 deg. 32 min. W.

From the westward, bring the light to bear N E if it bears more easterly, stretch to the southward till it bears N E and as much northerly as you please, there being no shoal or ledge to the southward; then keep open on your larboard bow; give it more than a mile and a half birth—so much more as you please.

Note—The western ledges lie from the light S W distant two miles, the other W S W about one league; the eastern ledges lie in a range nearly some above water; the outermost one mile and a half from the light bears from it E N E.

When the light bears north distant about 2 miles, run N E 4 miles, the north will carry you to Chedabucto Head at a proper distance clear of danger.

When a breast of Chedabucto Head, run N $\frac{1}{2}$ W for the south point of George's Island.

When within half a mile of George's island you may enter harbour west of it in 18 fathoms, or east of it in 15.

In passing between Sandwich point and Meagher's beach run nearest the point to shun a shoal which runs off S W from the beach.

There is also a shoal lying one mile south of Sandwich point.

Coming from the eastward, run for the light and you cannot fail see Chedabucto Head as you open Halifax Harbour; the light being 4 miles distant from the Head to the S W.

TIDE TABLE for the American Coast.

Amelia Island	add 1	00	Machias	add 3
Boston Harbour	add 4	00	Martha's Vineyard	add 0
Bell Island Strts.	add 1	45	Nantucket	add 0
Bermuda Inlet	sub 0	30	Nanaganset Bay	add 0
Cape Fear	add 0	30	New-York	add 1
Cape Charles	add 0	15	Ovacoek In.	add 1
Cape May & Henlopn.	add 1	15	Passamaquoddy	add 4
Cape Roman	add 0	30	Penobscot Bay	add 3
Cape Sable	add 0	30	Philadelphia	add 6
Charleston Bar	sub. 0	15	Portland	add 3
Chebucto Bay	0	00	Prtsmth. & Newbrprt.	add 3
Florida Keys	add 1	20	Quebec	add 0
Fundy Bay	add 1	15	Sandy Hook	subt 0
Hell Gate	add 1	54	Savannah	add 0
Kennebeck entr	add 3	16		

The times in the above Table are to be added to or subtracted from the time of high water at Halifax, according to the directions there.

S
The u
v
One b
Two b
Two b
A pen
[T
the qu
the cen
the fol
An Uni
with
Do wit
Two
Do wit
a Fri
Do wit
a sn
A Red
et.
A red w
my'a
A red th
An Uni
my'a
prize
Made
V
A red f
A Red
ranea
A Red
Euro
A whit
Cana
A blue
A blue
or T
A blue

Signals made at Fort George when vessels are coming up the Harbour.

<p>One ball close for one square rigged vessel.</p> <p>One ball half hoisted for two do</p> <p>Two balls close for three do</p> <p>Two balls separated for four do</p> <p>A pendant of any colour for five do</p>	<p>A do under a ball for six do</p> <p>A do over a do half hoisted for 7 do</p> <p>A do under 2 do close for 8 do</p> <p>A do between 2 do separated for 9 do</p> <p>A flag of any colour for 10 or more do</p>
---	---

[The above are hoisted at the east or west yard arm, according to the quarter the vessel first appears in, with the addition of a ball at the centre of the yard until the vessel can be seen, when one or more of the following descriptive colours will be hoisted at the mast head.]

<p>An Union for a Flag Ship, with or without a Squadron</p> <p>Do with a Red Pendant over it for a Two decker.</p> <p>Do with a blue Pendant over it for a Frigate.</p> <p>Do with a white Pendant over it for a small armed Vessel.</p> <p>A Red flag pierced white for a Packet.</p> <p>A red white and Blue Flag an Enemy's Fleet</p> <p>A red flag an Enemy's merchantman</p> <p>An Union Jack over Neutral or Enemy's Signals Vessel is detained or prize.</p>	<p>A blue Pendant for a merchant ship</p> <p>A red Pendant for a Merchant Brig</p> <p>A white Pendant for a Topsail schr. or Sloop.</p> <p>A blue and white flag horizontally divided Neutral Fleet</p> <p>White and blue Pendant Neutral Man of War</p> <p>Blue flag Neutral Merchant Ship</p> <p>A white flag over any Signal Vessel bears a flag of Truce</p> <p>A ball at the mast head—Vessel is on shore or in distress; should immediate aid be necessary guns to be fired.</p>
---	--

Explanation of Signals

Made on the ensign Staff at Fort George to denote the Part which Vessels entering the Harbour of Halifax have arrived from.

<p>A red flag from Great Britain</p> <p>A Red and White do the Mediterranean.</p> <p>A Red Pendant the Continent of Europe.</p> <p>A white and red Pendant Madeira, Canary or Western Isles</p> <p>A blue flag West Indies</p> <p>A blue Pendant Bermudas Bahamas or Turk's Island.</p> <p>A blue and white flag United States</p>	<p>A white flag Newfoundland</p> <p>A Red and white flag horizontally divided, Quebec or Gulf of St. Lawrence.</p> <p>A blue and white flag horizontally divided. New Brunswick or Bay of Funday</p> <p>A white and blue Pendant—Vessel has an English Mail on board.</p> <p>A white Pendant—Coasts of Nova Scotia and Cape Breton.</p>
--	---

Repeat from Out Ports at Fort George.

For a square rigged vessel—two balls of a size.

A ship—A large ball at the end of the yard, with a small ball in the centre.

A brig—a small ball at the end of the yard, with a large one in the centre.

A lozenge in the centre close up—a sloop or schooner

Do do half hoisted—two or more schooners.

Merchants' Private Signals, Port of Halifax.

J & M Tobin A red flag crossed white *RED, &c.*

George Grassie & Co Do crossed white diagonally

Alex McRay Do centre a white star

Deblois & Mitchell. A do centre a white square

Alexander Mitchell Do centre 2 blue balls in a white square

Frasers & Co Red and white, white next the mast

Jesse Woodward A red Burgee

John Brown Do centre letter B

Hartshorne, Boggs & Co A chequered flag, red and white, red Uppermost.

William Storey A blue Petre *BLUE &c.*

J W Morris A blue Petre centre a blue ball

A Conard & Son blue flag centre a star

Belcher & Binney Do. crossed white

Wm Pryor blue and white flag blue uppermost

Collins & Allison A blue Burgee

Peter Grant A blue do centre letter G

M Richardson blue and red flag

Geo N Russell white and blue flag, white next the mast.

J Stayner A yellow Flag with a blue half moon in a white square

John Clark A blue Burgee crossed white diagonally

T & L Piers A yellow flag centre a blue ball

John Witham a yellow blue and yellow Flag.

GREEN &c.

Law Doyle a green burgee centre a harp

WHITE &c.

John Starr a white Flag centre a star

John Tremain Do with blue cross

C Harris do centre a red square

R Tremain Do with a red cross

J Lyons Red and white Flag, white uppermost

Wm Strachan White red and white do, white next the mast

Wm M'Herron A white burgee with a blue fly

W K
Fiddes
The
sight f
ed on t
Fort G
sels sh

Lienter
Scot
Scot
celle
of th

Honour
Mich
Jame
Bion
Clerk

S G W
Law

J Cam
Esqr
C

Tbos.
C
John H

Wm A
Esqr

Snow P

Wm O

W K Reynolds a white Burgee with a red cross
Fiddes, May and Robertson Red and white flag, red uppermost.
 The above signals are worn at the main. Upon a vessel arriving in sight from the Light House so wearing a signal, a similar one is hoisted on the Telegraph Staff, or at the yard arm of the Signal Staff at Fort George, with a Pendant under it, descriptive of the class of vessels she belongs to.

PROVINCE OF NOVA SCOTIA.

Lieutenant Governor and Commander in Chief of the Province of Nova Scotia and its Dependencies, and Commander of the Forces in Nova Scotia, New Brunswick Prince Edward Island &c. &c. &c.—His Excellency Lieutenant General Sir **JAMES KEMPT**, Knight Grand Cross of the Most Honourable Military Order of the Bath, &c. &c. &c.

HIS MAJESTY'S COUNCIL,

Honourable **SAMPSON SALTER BLOWERS**, President.
 Honourable and Right Rev. Robert, Lord Bishop of Nova Scotia—How. Michael Wallace—Charles Hill—Richard J Uniacke—Charles Morris—James Stewart—Thomas N Jeffrey—Brenton Halliburton—Hibbert N Binney—Eos Collius and Simon B Robie. Sir Rupert D George, Bart. Clerk.—Mr. S Greenwood, *Messenger*.

HOUSE OF ASSEMBLY.

County of Halifax.
S G W Archibald, L L D, William Lawson, George Smith and Esquires.

County of Annapolis.
J Campbell and Abraham Gesner Esqrs.

County of Cumberland.
Tbos. Roach & Richd. Blair, Esqrs.

County of Lunenburg.
John Heckman & Lot Church Esqs.

County of Kings.
Wm A Chipman & Samuel Bishop Esqrs.

Queen's County
Snow Parker & Jos. Freeman Esqrs

County of Hants.
Wm O'Brien & Benj. Dewolf Esqrs

Esq —Speaker.

County of Shelburne.
James Bingay & John McKinnon Esqrs

County of Sydney.
Thos Dickson and J Young Esqs

County of Cape Breton.
Lawrence Kavanagh and Richd J Uniacke Esqs

Town of Halifax.
John Albro and Chas R Fairbanks Esqrs

Truro:
Wm Dickson Esq

Onslow.
Robert Dickson Esq

Londonderry,
James Flemming Esq

Annapolis.
 John Robertson Esq.
Granville.
 Timothy Ruggles Esq
Digby.
 William H Roach Esq
Lunenburg
 Edward James Esq
Amherst
 James S Morse Esq
Horton
 Sherman Donnison Esq
Cornwallis.
 John Wells Esq

Windsor.
 William Fraser Esq
Falmouth.
 Wm Young Esq
Barrington.
 Wm B Sargeant Esq
Liverpool
 James R Dewolf Esq
Newport
 Daniel Wier Esq
Shelburne
 Thomas Crowell Esq
Yarmouth
 Samuel S Poole Esq

Chaplain, Rev John Inglis DD.—Clerk, James B Franklin Esq.—Sergt. at Arms, Mr John Boyd.—Sergt. of the Gallery, Mr M Forrester.—Messenger, Mr John Gibbs.

Provincial Officers,

Surveyor General of Lands for the Province, Hon Charles Morris.
 Treasurer of the Province, Hon. Michael Wallace. Secretary of the Province, Sir Rupert D George Bt.

Court of Chancery.

Chancellor, His Excellency Sir James Kempf.—Master of the Rolls, Hon. Sampson Salter Blowers. Masters in Chancery, Hon. Brenton Halliburton, Hon James Stewart, Peleg Wiswell and J G Marshall, Esqrs. Registrar, H H Cogswell, Esq. Counsellors and Solicitors. The Attornies of the Supreme Court.

Courts of Error, and of Marriage and Divorce.

HIS MAJESTY'S COUNCIL.

Advocates and Proctors, The Attornies of the Supreme Court.

Court of Vice Admiralty.

Judge, Hon S S Blowers. Advocate General, Hon R J Uniacke, Solicitor General, Hon Simon B Robie. Registrar, L Pennel, Esq. Dep Registrar, Hon Charles Morris. Marshal, James Putnam, Esq. Dep Marshal, Mr Stephen Deblois. Advocates and Proctors, The Attornies of the Supreme Court—Messenger, Mr S Greenwood.

Court of Escheats and Forfeitures.

Commissioner, Honourable Michael Wallace. Registrar, Sir Rupert D. George, Bt

Court for the Probate of Wills.

And granting Letters of Administration.

Surrogate General, Honourable Charles Morris.

Supreme Court.

Chief Justice, Hon Sampson S Blowers Paise Judge, Hon. Brenton Halliburton, Hon James Stewart, Lewis M Wilkins Esq. Associate Judge,

Peleg
 mon B
 Uniack
 throug
 Esq.
 Ba

Hal
 acke, J
 ers, Ja
 ley, Ja
 acke,

Pict
 Jonath

Tru

Ann

Digby

Amh

Bucha

Hon

Win

Wilkin

Shel

mouth

Willia

Esq.

C

Ann

Cun

Cor

trick V

Sydney

nenbu

Hon.

Brun

Com

B G

sons S

D D

E G

Anna

burne

ter—

sionar

Parre

Peleg Wiswall Esq. Atty. Gepl. Hon R Uniacke, Solicitor Gen, Hon Simon B Robie L L D. King's Counsel, S G W Archibald L L D Richard J Uniacke and William Fraser Esqrs. Clerk of the Crown and Prothonotary throughout the Province, William Thompson, Esq Deputy, J W Nutting Esq.

Barristers and Attornies at Law of the Supreme Court
residing in the Province.

Halifax H H Cogswell, D S Clarke, S G W Archibald L L D: R J Uniacke, J W Nutting, William Hill, C R Fairbanks, J W Johnson, W L Sawyers, James Cochran, N W White, W B Bliss, Beamish Murdoch, E Crawley, James S Tremain, Alexander Primrose, Charles Twining, James Uniacke, C D Archibald, J I Sawyer and J F Gray Esqrs.

Pictou N P Oding, Robert Hutton, Thomas Dickson, John Lawson, jr. Jonathan Blanchard and Henry Blackadar Esqrs.

Truro Jonathan Marsters and James W Chandler Esqrs.

Annapolis T C Haliburton, H. Goldsmith and George Grassie Esqrs.

Digby G K Nichols Esq.

Amherst Co of Cumberland James S Morse, Alexander Stewart, J B Buchanan, Charles D Roach, E B. Chandler Esqs.

Horton, King's Co. John Whidden, William Graves Esqrs.

Windsor Co Hants William Fraser, D D Stewart, H A Emerson, L M Wilkins, W Bromley Esqrs.

Shelburne Colin Campbell Esq. *Antigonish* John T Hill Esq. *Yarmouth* John Forman Esq. *Guysboro'* F W DesBarres Esq. *Liverpool* William Sterns and S P Fairbanks Esq. *Arichat* William C Delaney Esq. *Lunenburg* John Creighton, G F Solomon Esqrs.

Commissioners for taking Special Bail in the Country

On Actions depending in the Supreme Court.

Annapolis William Winniet Esq.

Cumberland Charles Baker and Thomas Roach Esqs.

Cornwallis—S L Allison Esq. *Horton*—S Dennison Esq. *Hants*—Patrick Wright Esq *Colchester*—J Fulton Esq *Pictou*—W Patterson Esq *Sydney*—Alexander M'Donald Esq *Shelburne*—Colin Campbell Esq *Lunenburg*—F J Rudolf Esq.

Clergy of the Established Church in Nova-Scotia.

Hon. the Right Reverend ROBERT, Lord Bishop of Nova-Scotia, New-Brunswick and their Dependencies; Rev John Inglis D D Ecclesiastical Commissary and Rector of St Paul's J T Twining A M Curate of St Paul's B G Gray Missionary to Germans *Halifax*—C Inglis *Dartmouth*—C Parsons *Sackville*—C Porter D D *Newport*—W C King *Windsor*—W Cochran D D *Falmouth*—F Salt A M *Pain Acad Windsor*—R Norris *Cornwallis*—E Gilpin *Aylesford*—A Gilpin *Wilmot*—H N Arnold *Granville*—J Mallett *Ge Annapolis*—R Veits *Digby*—T A Grantham *Yarmouth*—T Ross *Shelburne*—W Twining *Liverpool*—R Aiken *Lunenburg*—C Weeks *Manchester*—J Shreeve *Chester*—H Boney *Sydney*—J Burayete (travelling missionary) *Truro*—W Gray *Cumberland*—H Hayden *Randou*—G Morris *Parrsborough*.

Clergy of the Roman Catholic Church in Nova Scotia.

Rev J Carroll and Rev J Dunphy *Halifax*—Rev James Grant *Antigonish*—Rev J Lyhon *Manchester*—Rev C Grant *St. Margaret's*—Rev Dennis G. Gray *Chezencooke*—Rev W Sigogne *St Mary's Bay*—Rev A Doucett *Est Brook*—Rev T Grace *Prospect*—Rev Pere Vincent *Tracadie*

Ministers of the Presbyterian Church in Nova Scotia.

Presbytery of Truro—Rev. H Graham A M *Stewiack* Rev John Brown *Londonderry* Rev Jno Waddel *Truro*. Rev. T S Crowe *Douglas*. Rev. A Kerr *Economy*.

Presbytery of Pictou—Rev. James McGregor D D *East River*. Rev. Duncan Ross *West River*. T McCulloch D D *Pictou (Town.)* Rev. John Mitchell *River John*. Rev. William Patrick *Merigomish*. Rev. James Thompson *Mirimichi*. Rev. Thomas Trotter *Derchester* Rev. Alex. Lewis *St. Mary's*. Rev. William Miller *Mubou & Port Hood*

Presbytery of Halifax—Rev Matthew Dripps, *Shelburne*. Rev, Robert Blackwood *Upper Shubenacadie*. Rev. John Sprott *Windsor*.

Old Presbyterian or Scotch Church.

—Rev. Arch. Gray D D Senior Minister. Rev. E Rennie junior Minister. New Presbyterian Church Rev, John Martin Minister.

Methodist Missionaries.

Halifax—Wm. Temple & Wm. Black (supernumerary). *Liverpool* R L Lusher.

Baptist Ministers.

John Burton, David Harris Thomas Ashley, Edward Manning Geo. Dimock, J James Munro Samuel M'Cullay, Thomas H. Chipman, Joseph Dimoc, Robert Harris Peter Crandall, Charles Tupper, David Nutter, William Elder George Richardson Joseph Henderson John Craig Enoch Towner Harris Harding, Theodore Seth Harding.

Colleges established in the Province,

King's College Windsor

Patron His Grace the Lord Archbishop of Canterbury.

Governors :

His Excellency the Lieutenant Governor, The Right Rev the Lord Bishop of Nova Scotia, The Hon. the Chief Justice, The Judge of the Court of Vice Admiralty, The Speaker of the House of Assembly, The Attorney General, The Solicitor General, The Secretary of the Province. The Rev. the President, The Rev. the Vice President, The Rev the Ecclesiastical Commissary of the Diocese.

Visitor—The Lord Bishop of Nova-Scotia,

President, Rev Charles Porter D D, Vice President Rev Wm Coch-

ran D
Acting
Wm Co
ter D
Cochra
ACAD

The
James
va-Sc
Simon
Prof
Prof
rin

Govern
r
Tras
eau Ro
Lowde
James
M'Cul

Rig
S Blo
ris, J
Binne
seanb

M
arran

ran D D, Professor of Divinity and Hebrew Rev Chas Porter D D
Acting Professor of the Moral Sciences and Metaphysics. The Rev
Wm Cochran D D, Acting Professor of Mathematics The Rev C Por-
ter D D Professor of Grammar Rhetoric and Logic The Rev W.
Cochran D D, Steward Mr Roberts.

ACADEMY under the direction of the Governors of King's College,
Principal Rev Mr Salt.

Dalhousie College Halifax.

Patron His Majesty the KING,

Governors ;

The Right Hon. George Earl of Dalhousie, His Excellency Sir
James Kempt K C B, Hon and Right Rev Robert Lord Bishop of Nova-
Scotia, Hon Sampson Salter Blowers, Hon Michael Wallace, Hon.
Simon Bradstreet Robie and the President,

Professors of Greek and Latin Classics

Professors of Mathematics Natural and Experimental Philosophy. } Not yet filled up

Picton Academy.

Governed by twelve Trustees who are to profess either the Presbyte-
rian system of Religion or that of the Church of England.

Trustees, Hon S B Robie LL D, SG Archibald Esq LL D, Dun-
can Ross, Thos M'Culloch DD, Thos Davison, George Smith, R.
Lowden, Wm Patrick, James M'Gregor DD, Archibald Gray DD,
James Roman, and James Robson. Head Master, Rev Thomas
M'Culloch, DD. Assistant, Rev. Jus. M'Gregor DD.

National School Halifax.

Abel S. Gore, Esq.—Master.

Acadian School Halifax.

Walter Bromley, Esq — Master.

Justices of the Peace throughout the Province.

Right Rev Robert, Lord Bishop of Nova-Scotia. Hon. Sampson,
S Blowers, Michael Wallace, Chas Hill, R. J. Uniacke, Charles Morris,
James Stewart, T N. Jeffery, Brenton Haliburton, Hibbert N.
Binney, Enos Collins, S B Robie and the Speaker of the House of As-
sembly.

Memo. *The sittings of Courts, names of Officers, &c, will be found
arranged under the respective Counties to which they belong.*

COUNTY OF HALIFAX.

Town and District of Halifax, Proper.

High Sheriff of the County. J. I. Sawyer Esq.

Supreme Court sits at Halifax.

On the 2d Tuesday of January, 1st Tuesday of April, 2d Tuesday of July, and 2d Tuesday of October.

Inferior Court.

**On the 2d Tuesday of March, June, September and December:
Judges, Hon. Michael Wallace, James Foreman, John Howe, and W. Lawson, Esqrs.**

Commissioners Court.

Sits the first Mouday of every Month.

Commissioners, James Foreman, James Tobin, Richard Tremain, William Minns and John Liddell, Esqs Clerk, D S Clarke Esq.

Police Office.

**Open every day throughout the year except Holidays
Justices John G Pyke, John Liddell and John Howsen Esqs Clerk
D S Clarke.**

Sessions of the Peace.

**Sits on the 1st Tuesday of March June September and December
Justices of the Peace of and for the County.**

Residing in the District of Halifax

John G Pyke Custos Rotulorum, James Creighton, James Forman, John Howe Sen. Rufus Fairbanks, Samuel Head, John Liddell, Richard Tremain, Henry Yeomans, Peter M'Nab, J M Greer, William Lawson, Samuel Albro, Samuel Cunard, John Starr, John Albro, Michael Tobin, M Richardson, John D Hawthorn, Thos Holland, Isaac Rayne H Y Mott, John T Walford Esqs. D S Clarke C P.

Commissioners of the Revenue:

Hon R J Uniacke Hon M Wallace Hon Simon B Robie and Wm Lawson Esq.—William Newton Clerk.

Commissioners for Light Houses.

Samuel Cunard Esq. and Capt Maynard R N.

Commissioners for visiting the Poor House.

Hon R J Uniacke, J G Pyke, Esq Hon Charles Morris, Mr. John Stayner, James Forman Esq Hon T N Jeffrey, R Tremain Esq Rev. Archibald Gray, D D Henry Yeomans Esq and Hon Charles Hill,

James P

Hon
Andre
John
Robert
Chas
Wm C
Edwa

Hon T
John W
J Purvi
Mr E L
Robert
W McS

A F Jo

The
day at
Wes
on Mo

Includ

Ch
of the

Commissioners of the Streets, &c.

**James Forman John Albro, Michael Tohin, Frederick Major and S
Cunard Esquires.**

Registrar of Deeds &c. Sir R D George, Bt.

Officers of the Provincial Revenue,

**Hon H N Binney, Collector of Impost and Excise
Andrew Richardson Esq Guager and Weigher
John Role, Shipping Officer
Robert Hodges, Land Waiter
Chas Ross, James Barret, Waiters
Wm Cleaveland, Collector of License Duty
Edward Duckett, Collector of Light Duty**

Officers of His Majesty's Customs.

**Hon T N Jeffrey Collector
John Wallace Esq Comptroller
J Purvis, J W Watson Esqrs. Weighers and Searchers
Mr E Duckett surveying officer of shipping.
Robert Dimmet, Richard B Young, Tide surveyors
W McSweeney, Errol Boyd, Tidesmen.**

Officers of His Majesty's Naval Yard.

**A F Jones Esq Master Shipwright. Mr James Ritchie, Clerk, Mr
Matthews Gate Porter.**

Deputy Post Master General,

John Howe, Esq.—Halifax.

Coroner for the County,

Mr Samuel Greenwood.

Mail Days.

**The Eastern and St. John N. B. Mails arrive in Halifax on Satur-
day at 3 o'clock P M, and leaves do on Wednesday at 1 o'clock P M.
Western ditto arrives on Thursday at 2 o'clock P M and leaves ditto
on Monday at 2 o'clock P. M.**

Eastern Division

**Includes Counties of Cumberland & Sydney and Districts of Colches-
ter and Pictou.**

**Chief Justice of the Inferior Courts of Common Pless and President
of the Courts of Session in this Division, Jared J Chipman Esq.**

COUNTY OF HALIFAX.

Districts of Colchester and Pictou.

Supreme Court sits at Pictou on the last Tuesday of May, and third Tuesday of September.

At Truro on the 1st Tuesday of June, and 4th Tuesday of Sept.
Inferior Court.

Sits at Pictou 1st Tuesday of February, and 4th Tuesday of July. Assistant Judges, Hugh Denoon, A McDonald, George Smith, Robt. Lowden, and Andrew M'Cara Esqrs. Mr. Walter Patterson Deputy Prothonotary.

At Truro on the 2d Tuesday of July and the 3rd Tuesday of Jan'y. Assistant Judges, John Fulton, James Archibald, and J M'Curdy Esqrs. Mr. George Dill Deputy Prothonotary.

Sessions of the Peace.

Sits at Truro and Pictou at the same time with the Inferior Court, Justices of the Peace.

Of and for the County residing in the Districts of Colchester & Pictou James Fulton, Hugh Denoon, John Stewart, James Archibald, Robert Lowden, Samuel Topper, Wm. Cotting, Joshua Marsh, John Dickson, William M'Kay, George Roy, Mathew Archibald, Wentworth Taylor, John Allen, James Skinner, Robert Dickson, James M'Curdy, James Kent, George Smith, James Benvie, Adam Archibald, John Fraser, Nathaniel Masters, Thomas J Brown, James Fleming, J Mahon, W. Currie, W. Mattheson, D. M'Lean R M Kay, Andrew M'Cara, W Field, E S Blanchard, Jas Carmichael, Jno Olding, Wm Mortimer and Silas H Crane Esqrs.

Surrogate Judges of the Court for the Probate of Wills.

District of Colchester, S G W Archibald Esq.—District of Pictou, George Smith Esq.

Registrars of Deeds, &c.

District of Colchester, Wm. Dickson Esq. District of Pictou, Geo. Smith Esqre.

District of Pictou.

Collector Light Duties, R Corbett. Collector of Impost and Excise and Pro Collector, Hugh Denoon, Esq. Ditto for District of Colchester, Robert Dixon, Esq.

Deputy Sheriffs.

District of Colchester Israel Allison Esq District of Pictou J W Harris, Esq.

Commissioners of Land Board.

District of Pictou—George Smith, Robert Lowden, John Skinner Robert Patterson. District of Colchester—Robert Dickson, James

Flemm
Ross, I
Guys

Sits
of Mar
the 4th
Thos
jamin

The
Wm
Marsh
nold, C
Camp

Low
John
Cuon

Upper

Sits a
sistat
Blair

Flemming, Sam Tupper, Edward Blanchard. *Postmasters*—Alexander Ross, E. J. Pictou. William Dickson Esq. Truro. Samuel Moore Esq. Guys River.

COUNTY OF SYDNEY.

High Sheriff for the County, David McQueen, Esq.

Supreme Court.

Held at Dorchester on the 2d Tuesday of September,

Inferior Court.

Sits at Dorchester in the upper district of the county, on the 2nd Tuesday of March and on the 1st Tuesday of Nov at Guysboro in the lower district on the 4th Tuesday of March and 3d Tuesday of November, Assistant Judges Thos Cutler T W Hierlihy, Joseph Marshall, John Cunningham and Benjamin Ogden Esqrs. Dep. Prothy Alex McDonald.

Sessions of the Peace.

Held at the same time with the Inferior Court.

Justices of the Peace.

Thos Cutler Custos Rotulorum, Joseph Marshall, Richard Cunningham Wm Atwater, Christ Muller, Robert Mulleson Cutler, Joseph H Marshall, Wentworth Taylor, Patrick Lanigan, Alex McDonald, J McDonald, C Archibald, Robert Murray, D Archibald, W McKien, T Glenross, D Campbell, A McDonald, R Hartshorne, Jno Newton, Jos Maxwell Esqrs.

Commissioners of Land Board.

Lower District—Robert Cutler, Joseph Marshall Robert Hartshorne, and John Newton. Upper District—Rev T Trotter, B Ogden J Hierlihy, John Cunningham John McDonald and Robert Henry Esqs.

Surrogate Judge of the Court for the Probate of Wills, &c.

Thomas Cutler Esq

Deputy Registrar of Deeds &c.

Upper District—John Cunningham Esq Lower District—Thomas Cutler Esquire.

Coroner—Peter Frost.

Postmaster—David McQueen Esq. Antigonish.

COUNTY OF CUMBERLAND.

High Sheriff for the County, Charles H Chandler Esq.

Supreme Court.

Sits at River Philip on the 2d Tuesday of June.

Inferior Court.

Sits at Amherst, on the 1st Tuesday of Jany and last Tuesday of June, Assistant Judges Charles Baker Henry Parry Thomas Roach and Richard Blair, Esquires. Silas Morse Esq. Dep Prothonotary.

Sessions of the Peace.

Sits at Amherst, the same time with the Inferior Court.

Justices of the Peace.

Charles Baker Esq Custos Rotulorum Henry Purdy Gilbert Purdy Edward Baker Thomas Roach C H Chandler Gabriel Purdy D M Farlane William Baker John Black Wm White Richard Blair Gains Lewis John Morse George Bergman James M Nab Thomas Cooke and Stephen Oxley Esqrs. J S Morse Esq. C P.

Surrogate Judge of the Court for the Probate of Wills.

Charles Baker Esq Registrar of Deeds &c. Charles Baker Esq Collector of Impost and Excise. Thomas Chapman Pro Collector of Customs Michael Gordon.

Commissioners of Land Board.

Richard Blair Thomas Roach James S Morse Thomas Cooke, Esqrs.

Coroner—John Morse Esq.

Postmasters—Thomas Roach Esq Fort Lawrence W White Esq Amherst.

MIDDLE DIVISION

Includes the Counties of Hants Kings Queens & Lunenburg. Chief Justice of the Inferior Courts of Common Pleas and President of the Courts of Session in this division. W H O Halliburton Esq.

COUNTY OF HANTS.

High Sheriff for the County, Patrick Wright, Esq.

Supreme Court

Sits at Windsor on the last Tuesday of May, and the 4th Tuesday of September.

Inferior Court.

Sits at Windsor on the 1st Tuesday of January, and the 1st Tuesday of July Assistant Judges R Cunningham Esq Rev W Cochran D D Dep Prothy. Patrick Wright Esq.

Sessions of the Peace.

Held at the same time with the Inferior Court.

Justices of the Peace.

John Emerson Custos Rotulorum Richard Cunningham John Clarke Wm Smith Shubal Dimock W Salter J Walker Caleb Smith W H Shev James Whidden John Smith A Scott John Parker Benjamin Dewolt W O'Brien J Withrow J McKay J Allison J Garby John Dimock John Eider Esqrs.

Commissioners of Land Board.

W H O Halliburton Jos Sentell Benjamin Dewolt W H Shev and Richard Smith Esqrs. *Surrogate Judge of the Court for the Probate of Wills—* Wm Fraser Esq.

Deputy Registrar of Deeds W Bowes Esq *Collector of Impost & Excise*

W Bowes
R Dicks

Held at

Sits at
Assis
den and

John
David V
Dewolt
ker S D
D Harr

H V

Su

Collecto

Postma

Sits at
tober. A

W Bowes Esq *Pro Collector of Customs* W Bowes Esq *Ditto for Douglass*
R Dickson Esq.

Postmaster.—W Bowes Esq Windsor,

COUNTY OF KING'S.

High Sheriff for the County. George Chipman Esq.

Supreme Court.

Held at Horton on the 1st Tuesday of June, and the 3d Tuesday of September.

Inferior Court.

Sits at Horton on the 3d Tuesday of May, and 2d Tuesday of Oct.
Assistant Judges, John Chipman E Dewolf Wm Campbell D Whidden and C R Prescott, Dep. Prothy, Samuel L Allison Esq.

Sessions of the Peace.

Held at the same time with the Inferior Court ;

Justices of the Peace.

John Chipman Custos Rotolorum, Elisha Dewolf, Wm Campbell David Whidden, James Kerr Wm A Chipman J Ratchford Danniell Dewolf Simon Fitch James Harris Samuel Bishop J Wells Alexr Walker S Dennison James Allison Daniel Lockhart, Fullerton J Lewis J D Harris W Chipman jr. H Harrington Wm Chipman C P.

Commissioners of Land Board.

H V Buskirk David Whidden Geo Chipman J Johnson Esqrs
Coroners, W Moore D Dewolf James Allison Esqrs.

Surrogate Judge of the Court for the Probate of Wills &c.

William Campbell Esq.

Deputy Registrar of Deeds &c.

William Campbell Esq,

Collector of Impost and Excise—D Whidden, Esq. *Pro Collector of Customs*—D Whidden Esq.

Postmasters—Elisha Dewolf Esq Horton James Ratchford Esq Parborough.

COUNTY OF QUEEN'S.

High Sheriff for the County, Nathan Tupper Esq.

Supreme Court.

Held at Liverpool on the 1st Tuesday of July.

Inferior Court.

Sits at Liverpool on the 4th Tuesday of April and 4th Tuesday of October. Assistant Judges Joshua Newton, Joseph Freeman Snow Par-

Purdy Ed.
M^r Farlane
Lewis John
Oxley

Wills.
Collector of
Michael

Esqrs.
Amherst.

Justice
Courts of,

of Sep.

of July
Prothy.

Wm
James
Brien J
Esqrs.

nd Rich-
Wills—

& Excise

ker Benjamin Knaut James Dewolf Esqrs. Dep Prothy James Rogers Esq.

Sessions of the Peace.

Held at the same time with the Inferior Court.

Justices of the Peace.

Joshua Newton Custos Rotulorum, Joseph Barss Nathan Tupper Isaac Dexter Joseph Freeman Snow Parker Benjamin Knaut, Robert Barry Jas Gorham J R Dewolf John Barss Jas Dewolf Esqrs.

Commissioners of Land Board.

Jos Freeman Benj Knaut Nathan Tupper James Gorham Esqrs, Surrogate Judge of the Court for the Probate of Wills, &c.

Joshua Newton, Esq.

Collector of Impost and Excise—Jos Newton Esq *Pro Collector of Customs*—Jos Newton Esq *Coroner*—Jacob Whitman Esq.

Postmaster—Thomas P Caulkin Esq.

COUNTY OF LUNENBURG,

High Sheriff for the County, Henry Kaulback Esq

Supreme Court.

Held at Lunenburg on the last Tuesday of June.

Inferior Court.

Sits at Lunenburg on the 24 Tuesday of April and 24 Tuesday of October Assistant Judges John Creighton J Pernet Garret Millar Ed James Esqrs. Dep Proth John Owen Esq.

Sessions of the Peace.

Held at the same time with the Inferior Court.

Justices of the Peace.

Ed James Custos Rotulorum, F J Etter John Creighton John Pernet D W Crandall James Walker, John C Rudolf John Evans Ed Enright Garret Millar, Wm Alexander, John Heckman John Owen G S Wells Esqrs.— F C Rudolf C P.

Commissioners of Land Board.

John Pernette D M Crandle John Heckman Garret Miller, Surrogate Judge of the Court for the Probate of Wills, &c.

J Pernette Esq.

Deputy Register of Deeds &c. — Philip Rudolf Esq.

Collector of Impost and Excise—John Owen Esq *Pro Collector of Customs* John Owen Esq F J Rudolf Esq *Coroner*.

Postmaster—J C Rudolf Esq Lunenburg.

Includ
the Inf
Session

Sits at
of Septe

Sits at
Novemb
of Dece
grass C

J Jones
Winniet
vell sen
Whitma
Segoyne
Jun Eli
J F Ra
Rosch
Cutler
Su

Willi
James
Coll
and E
smith

Eas

mes Ro-

Tupper
Robert

Esqrs,
&c.

llector of

y of Oc-
llar Ed

ohn Per-
Evans Ed
Owen G

ler.
&c.

Collector

WESTERN DIVISION

Includes the Counties of Annapolis and Shelburne, Chief Justice of the Inferior Courts of Common Pleas and President of the Courts of Session in this division Thomas Ritchie Esq.

COUNTY OF ANNAPOLIS.

High Sheriff for the County, William Winniet, Esq.
Supreme Court.

Sits at Annapolis on the 2d Tuesday of June and the second Tuesday of September.

Inferior Court.

Sits at Annapolis on the 3d Tuesday of April and the 1st Tuesday of November; and at Digby on the 1st Tuesday of July and 3d Tuesday of December. Assistant Judges, Josiah Jones E Morton Andrew Snodgrass C U Jones Wm F Bonnell Esqrs. E Cutler Dep Prothonotary.

Sessions of the Peace.

At the same time with the Inferior Court.

Justices of the Peace.

J Jones Custos Rotulorum. Andrew Snodgrass, Edward Thorn Wm Winniet Simon Jones Stephen Jones Moses Shaw R T Randolph P Lovell sen Benjamin Dodge John Ruggles E Morton S V Bayard John Whitman Phineas Lovett John Morehouse Rubin Hankinson John M Segoyne, W Jones Thomas Ritchie Joseph Quequay John Wiswall Jun Elias Wheelock W F Bonnell C Jones John Reed Charles Jones J F Randolph W Bent Pardon Sankes Wm Delancy Sam Campbell W Rosch Charles Hannah Sam I Chesley Sam Hall Esqrs. Ebenezer Cutler C P.

Surrogate Judge of the Court for the Probate of Wills.

William Winniett, Esq.

Registrar of Deeds.

William Winniett, Esq Coroners—Silvanus Snow Wm Young and James R Lovett Esqrs.

Collector of Light Duty—W Winniett Esq Collector of Imposts and Excise—J Robertson Esq Pro Collector of Customs—H Goldsmith Esq.

Commissioners of Land Board.

Eastern District—Thomas Ritchie Henry Goldsmith D J Ditman

Western District—Cereno U Jones Charles M'Carthy Samuel Campbell Esqrs.
Postmasters—Henry Goldsmith Esq Aunapolis W Muir Esq Digby.

COUNTY OF SHELBURNE.

High Sheriff for the County, John Bingay Esq.
Supreme Court.

Held at Shelburne on the 2d Tuesday of July.
Inferior Court.

For the district of Yarmouth and Argyle.

Sits at Tusket Village on the 1st Tuesday of May and at Yarmouth on the 4th Tuesday of November Assistant Judges S S Poole, J Lent J N Bond B D'Enremont and H G Farish Esqrs M Huntington Dep Prothonotary.

For the District of Shelburne

Sits at Shelburne on the 2nd Tuesday of May and the 2nd Tuesday September.—Assistant Judges, G. White, J. Sargeant, J V Buskirk and T Crowell Esqrs.—Robert Bingay Esqr Depy Prothonotary.

Sessions of the Peace.

Held at the same time with the Inferior Court.

Justices of the Peace.

Gideon White Custos Rotulorum, John Sargeant Samuel S Poole, B Bernard B Dentremont Jacob V Buskirk, James Dore, J N Bond James Lent Ebenezer Crowel H G Farish Thos Crowell John Bingay Gabriel V Nordon Anthony Landres, J Kelly B Bingay M Huntington J McKinnon Colin Campbell J Barclay Esqrs. Robert Bingay, C. P.

Commissioners of Land Board.

Eastern District—Colin Campbell, Jacob Van Buskirk, John Bingay and B Sargeant. Western District—Samuel S Poole, H G Farish John M'Kinnon and Gabriel Van Norden Esqrs.

Surrogate Judge of the Court for the Probate of Wills.

Deputy Registrar of Deeds.—

Collectors of Impost and Excise.

Yarmouth—H G Farish.
Shelburne—J V Buskirk
Weymouth—R Hankison,

Pro
S Bru

Held a

Nor
the 4th
4th T
J G
tant J
and Fr
Crawle
Surrog
Regis
James

John
Richd
Rowl
McNa
Ferd
verH
mel V
Madd
Kean
Ac
of Im

*Pro Collectors of Customs—Yarmouth J N Bond Shelburne—A
S Bruce Weymouth—R Hankinson Barrington—Joseph Homer.
Coroner—George Bingay.
Postmaster—William Cox Esq. Shelburne.*

COUNTY OF CAPE BRETON.

High Sheriff for the County, C R Ward Esq.

Supreme Court.

Held at Sydney on the last Tuesday of August and at Arichat on the
1st Tuesday of September.

Inferior Court.

Northern District Sits at Sydney on the 2d Tuesday of April and
the 4th Tuesday of October. Southern District sits at Arichat on the
4th Tuesday of April and 2nd Tuesday of October.

J G Marshall Chief Justice of the Inf Court of Common Pleas Assis-
tant Judges, Thos Crawley, Lawr Kavanagh, John Leaver C Hubert,
and Frederick B Tupper Esqrs. Surveyor General of Lands—Thomas
Crawley. Collector of Impost and Excise—Charles E Leonard.
Surrogate Judge for the Probate of Wills—Thomas Crawley. Dep.
Registrar of Deeds, North District—Charles R Ward South District
James Turnbull Esqrs.

Sessions of the Peace.

Held at the same time with the Inferior Court.

Justices of the Peace.

John G Marshall Custos Rotulorum, Archd Dodd, Thos Crawley,
Richd Gibbons, Clement Hubert, John Leaver, Charles E Leonard,
Rowl McKinnon, Peter H Clarke, Lawr Kavanagh, John Jones, Chs
McNabb, John Campbell, James Dodd, John Cameron, Geo Syrrer,
Ferd, B Tupper, John B Giles, David Taitt, John Higgins, John Lea-
ver H Ingraham, Angus Grant, Samuel Plant, George Cossat, W Gam-
mel Wm Watts, William Banuerman, James Ball, George Brown And.
Madden, James Daffus, Theophilus Greenwood, H McDonald Jno Mc
Kean and Nicholas Paint Esqrs.

Acting Collector and Comptroller—John Warde Benn. Collector
of Impost and Excise.—

Collectors of Excise and Light Duty.

Charles C Leonard, Arichat James Turnbull Esqrs.

Superintendent of King's Mines.

Thomas Crawley, Esq. Coroner John Smith Esq.
Postmasters—Chs M'Alpine Esq. Sydney Jno Fuller Esq. Arichat.

Fire Wardens of the Town of Halifax.

Richard Tremain Esq. Chairman:

South suburbs—Edward Pryor jr. Fred. Major, & C R Fairbanks.

St Peter's Ward—John Albro, Henry Yeomans & Rufus Fairbanks

St. Matthew's Ward—Jonathann Tremain & Lawrence Hartsborne

St. Paul's Ward—G N Russell & W A Black.

County Court House Ward—Thomas Boggs & Wm. Minns.

St John's Ward—John Liddell, John Clark & Joseph Allison.

North Barrack Ward—Michael Tobin & S W Deblois.

North Suburbs.—Hon. Enos Collins, John Starr, J N Shannon, & Samuel Cunard.

Committee of the Fire Wardens appointed to manage and direct at Fires.—R Tremain, Thos Boggs, Hon Enos Collins, John Albro, J. Starr, Edw. Pryor jr. John Clark & Rufus Fairbanks. Esqrs.

Edw. Pryor & John Clark to superintend & direct the Axemen,

Fire Engine Company for the Town of Halifax.

Wm Patterson, Captain.

First Division—David Hutton Lieutenant, Henry Hill, John Johnston, Duncan Alexander, John Farquhar, Thomas Mackie, John Mitchell, J Carter, Thos Palister, Wm. J Rogers, Wm Kerr, Wm. Calwell, Donald McLennan, Wm. Barnett, Wm Murray, Arthur Oakley H. McLennan, Alex Malcolm.

Second Division—James Smith Lieutenant, Joel Martin, James Carmichael, Edw. Sturmy, Thos Cassedy, James Irwin Jno Drilio Jno Jno Harvey, Andrew Crawford Geo. Brookley James Bell, Geo S Wilson D McLean John Winton.

Third Division—James Dechman Lieutenant, Wm. Murphy, Rbt. Penny, Henry Spike, James Bricken, John Benzie, Jno Wilson Wm Varge.

Fourth Division. Joseph O'Brien Lieutenant, Michael Byron, Elias Cabbott, Geo. Little, Jno. West, Thos Parker, Robt. Norris.

Axe Fire Men for the Town of Halifax.

William Fennerty Captain, Michael Creamer Lieutenant, George Jost, Peter Hall, Jno. McNeil, Robt Richardson, Colin McKinzie, Errol Boyd, Jno. Longard, Edw. Longard, Thos McRie, Samuel Vickers, Jno McKinzie, Wm Marvin, James Grant, Wm Johnson, Wm Strickland, Jno Metzler, Henry Miller; Jno Sheffer, Geo Booth, Jas McNutt, Wm Rose, Wm Grant, Matthew Lownds, David Crowl, T. Vickers Nicholas Wright, Thos Lownds Stephen Hull.

Roads

Bedford
Rockin
Hoban
Fultz
Miche
Hiltz
Fizma
Pence
M Lall
Mason
Dobon
Wucoc
Fannou
Cupin
Morton
Gasper
Horton
Grab
Horton
Hamitt
Bragg's
Sharp's
Aylest
Harris
Wanno
Leonat
Hick's
Kents
Annapp

Fultz's
Fletch
Summ
Hall's
Key's
M'kee
Gay's
Field's
Gourl
Stewa
Clark

Roads to the Principal Towns in the Province from Halifax,
with the names of Lankeepers.

Arichat.

rbanks.
airbanks
rtshorne

ns.
son.

annon, &

direct at
albro, J.

emen,

an John-
hn Mit-
m. Cal-
Oakley

James
ilio Jno
S Wil-

y, Rbt.
on Wm

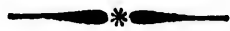
on, Eli-
is.

George
Kinzie.
Samuel
on, Wm
th, Jas
owl, T.

<i>Halifax to</i>					
Bedford Inn	3	Truro—Witter's	6	Kenkrick's Barrington	13
Rockingham	3	Blanchards—	6—6	Powel's Clyde R.	5
Hobaud's	3	Onslow—Gourley's	5	Pitts Shelburne	16
Fultz's Inn	3	Londonderry R Flem	7	Whole distance	164
Micuent's Inn	3	ring	7	<i>From Halifax to Lu-</i>	
Hiltz ½ way house	6	Low Village Yewitt	7	<i>nenburg</i>	
Finzaurice new do	1½	Foot of Cob Mountain	6	To nine mile house	9
Pence's Farm	3½	Clark's	6	Hamishe's head of St.	
M Lellan's 30m	4½	Sutherland's	4	Margaret's bay	22
Mason's Arms	5	Top of Cob Mountain	6	Church's Chester	16
Duchone Arms	1	J Purdy	9	Crandie's head of	
Wucox, Windsor	9	River Philip—Haw-	9	Chester wison	5
Fannouth bridge	6	son	10	Zwicker's head of	
Cutpanan's	1	Stewart's	2	Maibone bay	15
Moron's ½ way inn	5	Busk's	8	Heckman's	6
Gaspereau Martin's	5	Amberst—Bents	8	Whole distance	73
Horton—Fowler's	6	Fort Cumberland—	134	<i>From Lunenburg to</i>	
Graham's	6	Witherhead	7	<i>Liverpool</i>	
Horton Corner—		<i>From Annapolis to</i>		To Major's terry,	
Hamilton's	6	<i>Shelburne</i>		Lalave river	7
Bragg's	6	<i>From Annapolis to</i>		Drew's Inn	7
Sharp's Inn	7	Clements Church	9	Conro's terry Port	
Aylesford—Crane's	8	Bear river bridge	8	Medway	7
Harris	1	Hoggles Digby	9	M Vicar's inn	3
Wimot—Gibbons	12	Everes's Weymouth	13	Ball's Inn Herring	8
Leonard's	10	road	13	Cove	8
Hick's Bridge	5	Cosmon's Weymouth	6	M Leans Liverpool	2
Kents	8	Church	6	Whole distance	34
Annapolis, Chandler	7	Journe's Sissiboo R.	4	<i>To Cumberland via</i>	
	129	Whites, Clage	4	<i>Parrsborough.</i>	
Fultz's Inn	12	Lerran's Montagan	15	Windsor	45
Fletcher's	6	Cove	15	Parsboro' (by water)	30
Summerfield Schultz	5	Prack's beaver R.	14	Crane's	30
Hali's	3	Perry's Yarmouth	8	Moore's	10
Keys's	6	Lakes	8	Macan bridge, Fur-	
M'keen	3¼	Smith's & Richan's	5	longs	8
Gay's River Corbet	3	Yarmouth Church	5	Read's Macan R.	4
Field's	3½	Biany-It's Tusket	10	Napan Pursley's	5
Sibley's	5	Village	10	Amberst Embree	7
Gourley	3	Nickerson's Auptic	8	—Bents	2
Stewiack—Polly	1	River	8		
Clark's	6	Spinney's Auptic	5		
		By	5		
		Larkin's Pubnico R.	10		

Whetherhead & Yandell's Fort Comb	7	Robt Archibald's	4	Archibald's middle	
Whole distance	118	Robt Geddes'	4	River Pictou	5
To Pictou.		Henev's	4	Campbell's East River Pictou	4
Dicson's Truro	62	Dunbar's W branch		Sutherland's	7
Archibald Salmon River	14	E. river Pictou	26	Smiths Merigomish	6
Stewart's	9	W M Kay	8	Fergusons	7
M Connell's	3	John Fraser's	7	M Queen's Antigonishe	16
M George Pictou	10	Across the harbour to Walmsly court house	1	Whole distance	137
Whole distance	98			Road to the Gulph Shore	
To Pictou via Musquodoboit.		*Cross roads from Archibald's to Scott's	20	To Fergusons	121
Dartmouth Ferry	1½			Priest M'Donald's	8
Preston Brudley's	6	From Halifax to Antigonish.		M Queen's Antigonishe	16
Putnam's Farm	5	To Blanchard's W River Pictou	92	Whole distance	145
Hart's	5				
M Keen's	11				
Leckie's	13				

The Parrsborough Packet sails regularly to Windsor & Horton every week from the first of April to Christmas ; leaves Parrsborough on Monday, (wind and weather permitting) so as to be at Windsor on Tuesday, and will sail from thence (for Parrsborough) the first high water that happens at or after eight o'clock in the morning, leaves Parrsborough on Thursday, so as to be at Horton on Friday, and will sail from thence for Parrsborough the first high water after 8 o'clock in the morning.—The Packet frequently goes to Windsor twice a week.



Moveable Feasts.

Septuagesima Sunday, Jan. 30	Low Sunday April 10
Quing or Shrove Sunday, Feb. 13	Rogation Sunday May 8
Ash Wed or 1st Day of Lent Feb. 16	Asc Day or Holy Thurs. May 12
Mid Lent Sunday Mar. 13	Whit Sunday May 22
Palm Sunday Mar. 27	Trinity Sunday May 29
Easter Day April 3	Advent Sunday Nov 27

Explanation of Astronomical Characters

The Planets, and their Relations.

☉ The Sun	♀ Venus	♃ Jupiter.
☾ The Moon,	⊕ The Earth.	♄ Saturn,
☿ Mercury,	♂ Mars.	♁ Herschell

♁ a Pl junction other. differing

γ Arie
♄ Tau
♃ Gem
♁ Can
♁ Leo,
♁ Virg

May 3
Begin
Digits E
ern side
June
Novem
Begin
17m Mid
Digits
Northern
Decem

LEFT
Second t
the settin
Sixth, sh
in minute
on. E
setting,
the signs
RIGHT
Aspects

Dominic
Golden
Epaet

Middle 5
 East Ri. 4
 7
 omish 6
 7
 Antigo- 16
 —
 tance 137
 ulph Shore
 121
 ald's 8
 ntigo- 16
 —
 tance 145

♈ a Planet's Ascending Node. ♁ The Descending Node & Con-
 junction, or Planets situated in Longitudes differing 3 signs from each
 other. ☉ Opposition, or Planets situated in opposite Longitudes, or
 differing 6 signs from each other.

Sigus of the Zodiac.

- | | |
|---------------------|---------------------------|
| ♈ Aries The Ram | ♎ Libra, The Balance |
| ♉ Taurus The Bull | ♏ Scorpio, The Scorpion |
| ♊ Gemini, The Twins | ♐ Sagittarius, The Archer |
| ♋ Cancer, The Crab | ♑ Capricornus, The Goat |
| ♌ Leo, The Lion | ♒ Aquarius, The Waterman |
| ♍ Virgo, The Virgin | ♓ Pisces, The Fish |

Solar and Lunar Eclipses in the Year 1825.

May 31. The Moon Eclipsed visible.
 Beginning 7h 9 $\frac{1}{2}$ m Ecliptic 7h 14m Middle 7h 24 $\frac{1}{2}$ m End 7h 39m
 Digits Eclipsed 0 $^{\circ}$ 12 $\frac{1}{2}$ ' on the Moon's northern limb or from the south-
 ern side of the Earth's shadow.
June 16. The Sun Eclipsed invisible;
November 25. The Moon Eclipsed partly visible
 Beginning 10h 40 $\frac{1}{2}$ m Ecliptic & 11h 27 $\frac{1}{2}$ m Moon rises eclipsed 11h
 17m Middle 11h 38m End 12h 35m.
 Digits Eclipsed, 2 $^{\circ}$ 37' on the Moon's Southern Limb, or from the
 Northern side of the Earth's Shadow.
December 9. The Sun Eclipsed invisible

Explanation of the Calendar Pages.

LEFT HAND PAGE. First Column shows the days of the month.
 Second the days of the week. Third the rising of the Sun. Fourth
 the setting of the Sun. Fifth the length of days in hours and minutes.
 Sixth, shows how much faster or slower the sun is than the real time
 in minutes. S Sun slow; F, sun too fast. Seventh, sun's declinati-
 on. Eighth, the Moon's age in days. Ninth, the Moon's rising or
 setting, Tenth the Moon's southing. Eleventh, the Moon's place in
 the signs. Twelfth, high water at Halifax.

RIGHT HAND PAGE First column, days of the month. Second
 Aspects, Holidays, and Weather. Third the Farmer's Calendar.

Chronological Cycles for 1825.

Dominical Letter	B	Solar Cycle	14
Golden Number	13	Roman Indiction	13
Epact	11	Julian Period	6528

May 12

13
 13
 13

RECEIPTS.

A liquid black for Shoes or Boots.

Take Ivory black, and brown Sugar, of each two ounces; sweet oil a table spoonful; add gradually thereto a pint of vinegar cold, and stir the whole gradually till incorporated.

Another

To one pint of vinegar add half an ounce of vitriolic acid, half an ounce of copperas, two ounces brown sugar and two ounces and a half of ivory black, mix the whole well together.

To take out Pitch, Wax, Rosin, or Tar.

If any of these happen on a garment either silk, linen or woollen, pour a little oil of turpentine on the place, and let it soak in about half an hour then rub it but not too hard and you will find the turpentine has soaked out the glutinous quality, so that it will crumble out like small bits of dirt.

French method of taking spots of Ink out of Linen.

Take a piece of mould Candle, (or common candle will do nearly as well,) melt it and dip the spotted part of the linen into the melted tallow. It may then be washed and the spots will disappear, without injuring the linen. This is the best method hitherto discovered.

Chinese Method of Mending China.

Boil a piece of flint glass in rain water, to clean it five or six minutes, beat it to fine powder and grind it well with the white of an egg, and it joins China without riveting so that no art can break it again in the same place. You are to observe the composition is to be ground extremely fine on a painters stone.

To make Rye Coffee.

Take clean good Rye and wash it well in several waters, to separate all the dust blighted grains &c. Then put it into boiling water over the fire and boil it till it swells so as to burst some of the grains. Drain and dry it in the oven when you have been baking. It is then ready to burn or dry over the fire as coffee, Eggs ought to be added. Grind and use it as coffee, with this drink, bread and butter, cheese and dried beef, you may sit down on the produce of your own Farms.

To make Oats doubly nutritious for Horses.

Instead of grinding the Oats, break them in a mill, and the same quantity will be doubly nutritious. Another method is to boil the corn, and give it the horses with the liquor in which it has been boiled; the result will be, that instead of 6 bushels in a crude state, three bushels so prepared, will be found to answer, and to keep the animals in superior vigour and condition.

May
by the
mends
of Hay
packe
will e
will no
led on
ease.

The
and ex
pound
for on
be fit
bread

To

Sp
far as
parts
gour,
main
droop
In p
tum
twig
then

1
app
The
and
an
sq
de
du
pr

Mildewed Hay and Corn

May be recovered and rendered sweet and agreeable to cattle, by the use of common salt. The late Mr. Arthur Young recommends the Salt to be used in the proportion of a peck to one load of Hay, which is to be strewed upon the hay, in layers, as it is unpacked from the putrid stock. Horses as well as other cattle, will eat greedily damaged hay that has been salted, which they will not touch without the salt. A solution of common salt sprinkled on corn affected with mildew, will completely remove the disease.

An Excellent Yeast.

The following method of making Yeast for bread, is both easy and expeditious. Boil one pound of good flour, a quarter of a pound of brown sugar and a little salt, in two gallons of water, for one hour. When milk warm, bottle and cork it close, it will be fit for use in 24 hours. One pint of this will make 18lbs of bread.

To prevent the growth of Weeds round Fruit Trees.

Spread on the ground round the fresh transplanted trees, as far as the roots extend the refuse stalks of flax after the fibrous parts have been separated. This gives them very surprising vigour, as no weeds will grow under flax refuse, and the earth remains fresh & loose. Old trees treated in the same manner when drooping in an orchard, will recover and push out vegerian shoots. In place of flax stalks, the leaves which fall from the trees in autumn may be substituted, but they must be covered with waste twigs or anything else that can prevent the wind from blowing them away.

Apple Jelly.

It is not known, perhaps, so generally as it ought to be, that apples make an excellent jelly. The process is as follows:— They are to be pared, quartered, the core completely removed, and put into a pot without water, closely covered, and placed in an oven over a fire, when pretty well stewed, the juice is to be squeezed out through a cloth, to which a little white of egg is added and then the sugar. Skim it previous to boiling, then reduce it to a proper consistence & an excellent jelly will be the product.

15 p. Bower 1 1/2 3/4
 20 November 1720

I. Month. **JANUARY, 31 Days.** 1825.

The Lass of Fair Wone.

Beside the parson's bower of yew,
 Why strays a troubled spright,
 That peeks and pines, and dimly shines
 Thro' curtains of the night?

Why steals along the pond of loads
 A gliding fire so blue,
 That lights a spot where grows no grass,
 Where falls no rain or dew?

Full Moon 4th day 7h 25m. ev. | Last Quatr. 11th day 11h 39 m. m.

D	D	S	S	Days	S	Sun's	D	D	RIS.	Moon	D	FULL
M	W	RISES	SETS.	length.	SL	decl S.	A	&	SETS	South	PL	SEA
1	S	7 31	4 29	8 40	4	23	1	12	4 37	9 47	26	4 32
2	R	7 31	4 29	8 42	4	22	56	13	5 40	10 44	□	5 29
3	M	7 30	4 30	8 42	5	22	50	14	6 39	11 43	23	6 28
4	Tu	7 30	4 30	8 44	5	22	44	15	rises	morn	☉	7 26
5	W	7 29	4 31	8 46	6	22	37	16	6 13	0 41	22	MORN
6	Th	7 29	4 31	8 48	6	22	30	17	7 28	1 39	□	8 24
7	F	7 28	4 32	8 48	6	22	23	18	8 44	2 33	21	9 18
8	S	7 28	4 32	8 50	7	22	15	19	9 59	3 26	☿	10 11
9	B	7 27	4 33	8 52	7	22	7	20	11 13	4 17	20	11 2
10	M	7 26	4 34	8 54	8	21	58	21	12 25	5 7	☽	11 52
11	Tu	7 26	4 34	8 54	8	21	49	22	MORN	5 58	19	0 43
12	W	7 25	4 35	8 56	8	21	39	23	1 36	6 49	☿	1 34
13	Th	7 24	4 36	8 56	9	21	29	24	2 47	7 42	16	2 27
14	F	7 23	4 37	8 58	9	21	18	25	3 54	8 36	☿	3 21
15	S	7 23	4 37	9 0	10	21	8	26	4 55	9 30	13	4 15
16	B	7 22	4 38	9 0	10	20	56	27	5 48	10 23	26	5 8
17	M	7 21	4 39	9 2	10	20	45	28	6 36	11 16	☿	6 1
18	Tu	7 20	4 40	9 4	11	20	32	☉	sets	12	5	21 6 50
19	W	7 19	4 41	9 6	11	20	20	1	6 5	EVEN	53	☿ 7 38
20	Th	7 18	4 42	9 8	11	20	7	2	7 5	1 36	15	8 21
21	F	7 17	4 43	9 10	12	19	54	3	8 6	2 19	27	9 4
22	S	7 16	4 44	9 12	12	19	40	4	9 6	3 0	☿	9 45
23	B	7 15	4 45	9 14	12	19	26	5	10 5	3 40	21	10 25
24	M	7 14	4 46	9 16	12	19	12	6	11 4	4 20	☿	11 5
25	Tu	7 13	4 47	9 18	13	18	57	7	12 4	5 2	15	11 47
26	W	7 12	4 48	9 20	13	18	42	8	morn	5 46	27	EVEN 31
27	Th	7 11	4 49	9 22	13	18	27	9	1 5	6 34	8	1 19
28	F	7 10	4 50	9 24	13	18	11	10	2 8	7 24	22	2 9
29	S	7 9	4 51	9 26	13	17	55	11	3 10	8 18	□	3 3
30	B	7 8	4 52	9 30	14	17	39	12	4 11	9 15	18	4 0
31	M	7 6	4 54	9 34	14	17	22	13	5 8	10 14	☿	5 0

Ne
 D
 M
 1
 B
 3
 4
 5
 6
 7
 8
 B
 10
 11
 12
 13
 14
 15
 B
 17
 18
 19
 20
 21
 22
 E
 24
 25
 26
 27
 28
 29
 30
 31

50

1825.

1825. JANUARY begins on Saturday... Winter.

The parson's daughter once was good,
And gentle as the dove,
And young and fair—and many came
'To win the damsel's love.

High o'er the hamlet, from the hill,
Beyond the winding stream,
The windows of a stately house
In sheen of evening gleam.

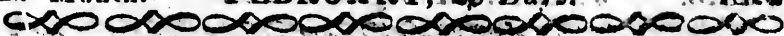
h 39 m. m.

D	FULL SEA
26	4 32
□	5 29
23	6 28
23	7 26
22	MORN
8	8 24
21	9 18
22	10 11
20	11 2
11	52
9	0 43
1	1 34
6	2 27
3	3 21
3	4 15
6	5 8
6	1
1	6 50
7	7 38
8	8 21
9	9 4
9	9 45
10	25
11	5
11	47
EVEN	31
1	19
2	9
3	3
4	0
5	0

New Moon 18th day 11h 20m eve. | First Qtr 27th day 4h 10m morn

D	Aspects, Holidays Weather, &c.	Printer's Calendar.
1	Circumcision ☉ per	<i>New Year.</i> —We tender our
B	2nd Sund. after Christmas	friends the usual compliments of
3		the Season, wishing them good fires
4		without smoky chimnies—Sleigh
5		rides without overturning—warm
6	Epiphany ☽ ☾ ☿	garments without empty pockets,
7	☽ perigee ☿ stat	—arguments without anger, and
8	Lucian	plenty of good cider, and withal
B	1st Sunday after Epiphany	good memories, which will enable
10		them to keep in mind the old adage
11		that "short settlements make long
12	Low tides	friends."—And to the Ladies we
13		wish more chinchilla than leghorn
14	hard frosts	—more flannel than calico—more
15	sharp	plaid than crape—more piety than
B	2nd Sunday after Epiphany	prudery—more patience than petu-
17		lance—more red cheeks than naked
18	Prisca ☽ ☽ ☿	elbows, and lastly complete victory
19	High tides	over the old BACHELORS.— <i>Am.</i>
20	☾ enters ☿	<i>Paper.</i>
21	Agnes	Another year has descended
22	Vincent	into the tomb to sleep with its
B	3d Sunday after Epiphany	predecessors; and I have again
24		come before you, to herald the
25	Conv. St. Paul	coming of its successor. May it
26	☽ South 7h 20m eve	teem with happiness for you—may
27	☽ of Sussex B	it be the precursor of blessings, nu-
28	☽ ☽ ☽ stat	merous as the snow flakes of the
29	K Geo IV Access. 1820	year, large as the wish of charity,
B	Septug. Sun. Chs. I Martyr	and sweet as the smile of youthful
31	K Geo IV procl.	innocence on the lip of beauty.

11. Month. **FEBRUARY, 28 Days.** 1820



71517
 1402
 141282
 140501
 14086

There dwell in riot, rout, and roar,
 A Lord so frank and free,
 That oft with inward joy of heart
 The maid beheld his glee.

Whether he met the dawning day
 In hunting trim so fine,
 Or tapers, sparkling from his hall,
 Beshone the midnight wine.

Full Moon, 3d day 7h. 1m. morn | Last Qr. 9th day 9h 42m even

D	D	S	S	Days	S	Sun's	☉	(RIS	Moon	(FULL		
M	W	Rises	SETS	Length	SL	decl S	Y	&	SETS	South	PL	SEA		
1	Tu	7 54	55	9 36	14	17 5	14	5	56	11 12	15	5 57		
2	W	7 44	56	9 38	14	16 48	15	6	38	12 10	☉	6 55		
3	Th	7 34	57	9 42	14	16 31	16	RISES MORN				7 51		
4	Fr	7 24	58	9 44	14	16 13	17	7	30	1 6	☽	8 0		
5	S	7 05	0	9 46	14	15 55	18	8	46	1 59	15	8 44		
6	B	6 59	5	9 50	14	15 36	19	10	2	2 52	☽	9 37		
7	M	6 58	5	9 52	14	15 18	20	11	18	3 44	15	10 29		
8	Tu	6 57	5	9 56	15	14 59	21	MORN.		4 38	29	11 23		
9	W	6 55	5	9 58	15	14 40	22	0	31	5 32	☽	MORN		
10	Th	6 54	5	10 0	15	14 20	23	1	40	6 27	27	1 12		
11	F	6 53	5	10 4	15	14 1	24	2	44	7 22	☽	2 7		
12	S	6 51	5	10 6	15	13 41	25	3	40	8 15	23	3 0		
13	B	6 50	5	10 10	15	13 21	26	4	29	9 8	☽	3 53		
14	M	6 49	5	11 10	12	13 0	27	5	20	9 58	18	4 43		
15	Tu	6 47	5	13 10	16	14 12	40	28	5	45	10 46	☽	5 31	
16	W	6 46	5	14 10	18	14 12	19	29	6	15	11 31	12	6 16	
17	Th	6 45	5	15 10	22	14 11	58	☽	SETS		12 14	24	6 59	
18	Fr	6 43	5	17 10	24	14 11	37	1	6	55	EVEN	56	☽	7 41
19	S	6 42	5	18 10	28	14 11	16	2	7	54	1 36	18	8 21	
20	B	6 41	5	19 10	30	14 10	54	3	8	54	2 17	☽	9 2	
21	M	6 39	5	21 10	32	14 10	33	4	9	54	2 58	12	9 43	
22	Tu	6 38	5	22 10	36	14 10	11	5	10	56	3 42	23	10 27	
23	W	6 36	5	24 10	38	14 9	49	6	11	56	4 27	☽	11 12	
24	Th	6 35	5	25 10	42	14 9	27	7	MORN.		5 26	18	EVEN	1
25	F	6 34	5	26 10	46	13 9	5	8	0	57	6 8	☽	1 53	
26	S	6 32	5	28 10	50	13 8	42	9	1	58	7 2	13	1 47	
27	B	6 31	5	29 10	54	13 8	20	10	2	54	7 58	26	2 44	
28	M	6 29	5	31 10	56	13 7	57	11	3	45	8 55	☽	3 40	

1825. FEBRUARY begins on Tuesday. Winter.

He sent the maid his picture, girt
 With diamond, pearl and gold :
 And silken paper, sweet with musk,
 This gentle message told ;

" Let go thy sweethearts, one and all,
 Shalt thou be basely wooe'd ;
 That worthy art to gain the heart
 Of youths of noble blood ?

h	42m	each
th	PL	FULL SE/A
12	15	5 57
10	10	6 55
RN	10	7 51
6	10	8 0
59	15	9 44
52	2	9 37
44	15	10 29
38	29	11 23
32	M	MORN
27	27	1 12
22	4	2 7
15	23	3 0
8	18	3 53
58	18	4 43
46	10	5 31
31	12	6 16
14	24	6 59
56	X	7 41
36	18	8 21
17	9	9 2
58	12	9 43
42	23	10 27
27	8	11 12
26	18	EVEN 1
8	10	1 53
2	13	1 47
58	26	2 44
55	6	3 40

New Moon 17th day 5h 51m eve. | First Qtr. 25th day 9h 28m eve

D	Aspects, Holidays, Weather, &c.	Farmer's Calendar.
M		
1	Q sets 9h 7m eve	May its evils, if any attend in its train, be happily averted, rendered stingless, or be borne with the fortitude which results from due submission to the will of Providence under the severest chastenings.—If prosperous be its influence on your household joys, your business affairs and your intercourse with your fellow-men, may it have a no less auspicious effect on your minds and hearts, stimulating them to gratitude to the great Giver of all good, and to that candour and charity which think no evil.
2	Purif B V. Mary	
3	Very high tides	
4	D perigee as you please	
5	Agatha	
B	Sexagesima Sunday	
7	clear enough	
8	South 11h 39m eve	
9	Low for the best	
10	Gr. elon 8	
11	tides	
12	hard frosty	
B	Quinquagesima Sunday	
14	Valentine	
15	Shrove Tuesday	
16	Ash Wednesday	
17		Our long winters are generally considered as being a great damage and expence to the farming interest at large. To those who choose to make them such, this is undoubtedly true; but to such as consult steadily their true interest, the fact is quite otherwise. Our northern winters, while they undeniably contribute in no small degree, to the health and vigour of the human frame, are no longer in reality than
18	enters X	
19	apogee II	
B	1st Sunday in Lent	
21		
22		
23		
24	D. of Camb. B.	
25	sets 9h 54m eve	
26	Low tides moderate	
5	2nd Sunday in Lent	
28	South 10h 13m eve	

2
From ... 26
went home 20

III. Month. MARCH, 31 Days, 1825.

“The tale I would to thee bewray,
 In secret must be said;
 At midnight hour I'll seek thy bower;
 Fair lass be not afraid.”

“And when the am'rous nightingale
 Sings sweetly to his mate,
 I'll pipe my quail call from the field;
 Be kind, nor make me wait.”

		Full Moon: 4th day 5h. 7m. ev.				Last Qr. 11th day, 10h. 12m. morn.						
M	D	S	S	Days	S	Sun's	D	D	RIS.	Moon	M	FULL
D	W.	RISES.	SETS	length	SL	dec	S	A	& SETS	South	PL	SEA
1	Fr	6 28	5 32	10 58	13	7 34	12	4 30	9 53	23	4 38	
2	W	6 26	5 34	11 2	13	7 11	13	5 10	10 49	Q	5 34	
3	Th	6 25	5 35	11 4	13	6 49	14	5 44	11 45	23	6 30	
4	F	6 24	5 36	11 8	12	6 26	15	RISES	MORN	W	7 24	
5	S	6 22	5 38	11 12	12	6 2	16	7 39	0 39	23	8 19	
6	B	6 21	5 39	11 14	12	5 39	17	8 58	1 34	23	9 14	
7	M	6 19	5 41	11 18	12	5 16	18	10 14	2 29	24	10 9	
8	Th	6 18	5 42	11 20	11	4 53	19	11 28	3 14	W	11 6	
9	W	6 16	5 44	11 24	11	4 29	20	MORN.	4 21	23	MORN.	
10	Th	6 15	5 45	11 28	11	4 6	21	0 36	5 18	4	0 3	
11	F	6 14	5 46	11 30	10	3 42	22	1 30	6 15	19	1 0	
12	S	6 12	5 48	11 34	10	3 19	23	2 31	7 8	V	1 53	
13	B	6 11	5 49	11 38	10	2 55	24	3 16	8 1	15	2 46	
14	M	6 9	5 51	11 40	9	2 31	25	3 52	8 49	27	3 34	
15	Th	6 8	5 52	11 42	9	2 8	26	4 23	9 35	W	4 20	
16	W	6 6	5 54	11 46	9	1 44	27	4 50	10 18	21	5 3	
17	Th	6 5	5 55	11 48	9	1 20	28	5 15	11 0	X	5 45	
18	F	6 3	5 57	11 52	9	0 57	29	5 38	11 41	15	6 26	
19	S	6 2	5 58	11 54	8	0 33	30	6 0	12 22	27	7 7	
20	B	6 1	5 59	11 58	8	0 9	31	7 32	1 4	W	7 49	
21	M	5 59	6 0	12 0	8	0 15	32	8 54	1 48	20	8 33	
22	Th	5 56	6 2	12 4	7	0 38	33	9 51	2 32	8	9 17	
23	W	5 56	6 4	12 8	7	1 2	34	10 56	3 15	10	10 5	
24	Th	5 55	6 5	12 12	7	1 25	35	11 56	4 10	W	10 55	
25	F	5 53	6 7	12 14	6	1 49	36	MORN.	5 3	II	11 48	
26	S	5 52	6 8	12 16	6	2 13	37	0 53	5 57	22	12 42	
27	B	5 51	6 9	12 20	6	2 36	38	1 45	6 52	23	1 37	
28	M	5 49	6 11	12 24	5	3 0	39	2 31	7 47	18	2 32	
29	Th	5 48	6 12	12 28	5	3 23	40	3 11	8 42	Q	3 27	
30	W	5 46	6 14	12 30	5	3 46	41	3 47	9 36	6	4 21	
31	Th	5 45	6 15	12 32	4	4 9	42	4 18	10 30	W	5 15	

1825

1825

MARCH begins on Tuesday.

Spring.

In cap and mantle clad he came,
At night with lonely tread ;
Unseen and silent as a mist,
And hush'd the dogs with bread.

And when the am'rous nightingale
Sung sweetly to his mate,
She heard his quail call from the field,
And, ah! ne'er made him wait.

h	M	FULL SEA
53	23	4 38
49	Ω	5 34
45	23	6 30
N	∞	7 24
39	23	8 19
34	∞	9 14
29	24	10 9
14	∞	11 6
21	23	MORN.
18	∞	0 3
15	19	1 0
8	∞	1 53
1	15	2 46
49	27	3 34
35	∞	4 20
18	21	5 3
0	∞	5 45
41	15	6 26
22	27	7 7
4	∞	7 49
48	20	8 33
32	8	9 17
∞	15	10 5
10	∞	10 55
3	∞	11 48
57	22	EVEN 42
42	∞	1 37
47	18	2 32
42	∞	3 27
36	16	4 21
30	∞	5 15

New Moon 19th day 9h 9m ev. First Qtr 27th day 10h 56m morn.

D	Aspects, Holidays, Weather, &c.	Farmer's Calendar.
1	David ♀ sets 10h 3m eve	we ought to wish them to be for the
2	♃ sets 0h 52m morn	improvement of the mind, education
3		of our children, cultivation and
4	High tides	improvement of our stock, thresh-
5		ing out the grain, dressing hemp &
6		flax, making and collecting ma-
7	3rd Sunday in Lent	nures, the providing of fencing
8		stuff, fuel &c. together with the
9	Gr. elonga ♀ moderate	promotion and enjoyment of that
10	♃ south 9h 33m eve	social intercourse, which is the life
11	Low tides	and soul of society, the enlivener &
12	Gregory Martyr	polisher of manners, and the basis
13	B. 4th Sund in Lent mid L.Sun	of the good order and best interests
14		of the community.
15	♃ sets 0h 5m morn snow	Hints to Farmers.—Many of us
16		are in debt; which forethought and
17	♀ sets 10h 32m eve	economy might have prevented.
18	♃ apogee	To be in debt, is to be in slavery—
19		the slavery of the mind. The times
20	B. 5th Sun in Lent ☽ enters ♉	are hard I know, and we ought to
21	Benedict	be so much the more close in our
22		calculations. I know a farmer who
23	♂ ♀ mild for the season	entangles in this way; he runs in
24		debt to the merchants for all the
25	Annan of B V Mary	West India & dry goods he wants
26		to make use of through the winter,
27	B. 6th Sun in Lent Palm Sun	spring and summer, and he pledges
28	Low tides	his corn, potatoes and other pro-
29	♃ south 8h 20m eve mild	duce in the fall; fall comes the
30	♃ Stationary cold	merchant will take the produce ordi-
31		narily at the lowest price; the conse-

Ex An. 4. Day

IV. Month. APRIL, 30 Days. 1825.

The words he whisper'd were so soft,
 They won her ear and heart;
 How soon will she who loves believe!
 How deep a lover's art!

No lure, no soothing guise he spar'd,
 To banish virtuous shame;
 He call'd on holy God above,
 As witness to his flame.

Full Moon 3d day, 2h 2m. mor. | Last Qr. 10th day, 0h. 65m. mor.

D	M	S	RISES.	S	SETS.	Days	SL	Sun's	Q	M	R.	Moon	M	FULL
						length		decl	N	A	S	South	PL	SEA.
1	F	5	43	6	17	12 38	4	4	39	13	4 49	11 24	16	6 9
2	S	5	42	6	18	12 42	4	4	56	14	5 20	12 19	16	7 4
3	B	5	41	6	19	12 44	4	5	19	15	RISES	MORN	17	8 0
4	M	5	39	6	21	12 46	3	5	42	16	9 11	1 15	m	8 20
5	T	5	38	6	22	12 50	3	6	4	17	10 25	2 14	17	8 59
6	W	5	36	6	24	12 54	3	6	27	18	11 31	3 13	1	9 58
7	T	5	35	6	25	12 56	2	6	50	19	MORN	4 11	15	10 56
8	F	5	34	6	26	13 0	2	7	12	20	0 0	5 8	28	11 53
9	S	5	32	6	28	13 2	2	7	34	21	1 18	6 2	v	Mo 47
10	B	5	31	6	29	13 6	1	7	57	22	1 58	6 52	24	1 37
11	M	5	29	6	31	13 8	1	8	19	23	2 32	7 40	2	2 25
12	T	5	28	6	32	13 12	1	8	41	24	3 1	8 24	18	3 9
13	W	5	27	6	33	13 14	1	9	3	25	3 27	9 7	3	3 52
14	T	5	25	6	35	13 18	0	9	24	26	3 51	9 49	12	4 34
15	F	5	24	6	36	13 20	0	9	46	27	4 14	10 29	24	5 14
16	S	5	23	6	37	13 24	F	10	7	28	4 37	11 10	γ	5 55
17	B	5	21	6	39	13 28	0	10	28	29	5 3	11 54	17	6 39
18	M	5	20	6	40	13 30	1	10	49	30	6	SETS	EV	39 29
19	T	5	19	6	41	13 34	1	11	10	1	8 57	1 25	8	8 10
20	W	5	17	6	43	13 36	1	11	31	2	9 57	2 14	24	8 59
21	T	5	16	6	44	13 38	1	11	51	3	10 56	3 7	Π	9 52
22	F	5	15	6	45	13 40	1	12	12	4	11 49	4 1	19	10 46
23	S	5	13	6	47	13 44	2	12	32	5	MORN	4 55	2	11 40
24	B	5	12	6	48	13 46	2	12	52	6	0 35	5 48	15	Ev 33
25	M	5	11	6	49	13 50	2	13	11	7	1 16	6 41	28	1 26
26	T	5	9	6	51	13 54	2	13	31	8	1 51	7 39	Ω	2 18
27	W	5	8	6	52	13 56	2	13	50	9	2 24	8 25	26	3 10
28	F	5	7	6	53	13 58	3	14	9	10	2 55	9 17	ϖ	4 2
29	E	5	6	6	54	14 0	3	14	28	11	3 23	10 10	25	4 55
30	S	5	4	6	56	14 4	3	14	46	12	3 55	11 4	16	5 49

*47
72
77
12*

1825.

1825

APRIL begins on Friday.

Spring.

He clasped her to his breast, and swore
To be for ever true;
"O yield thee to my wishful arms,
Thy choice thou shalt not rue."

And while she strove, he drew her on,
And led her to the bower
So still, so dim—and round about
Sweet smelt the beans in flower.

Oh. 65m. mor.

on	M	FULL
th	PL	SEA.
24	16	6 9
19	☾	7 4
RN	17	8 0
15	♄	8 20
14	17	8 59
13	♃	9 58
11	16	10 56
8	28	11 53
2	♃	Mo 47
52	24	1 37
40	☾	2 25
24	18	3 9
7	♃	3 52
49	12	4 34
29	24	5 14
10	♃	5 55
54	17	6 39
39	29	7 24
25	♃	8 10
14	24	8 59
7	♄	9 52
1	19	10 46
55	☾	11 40
48	16	Ev 33
41	28	1 26
39	♄	2 18
25	26	3 10
17	☾	4 2
10	25	4 55
4	☾	5 49

New Moon 18th day 5h 6m morn | First Qr 25th day 8h 24m eve.

D	Aspects, Holidays, Weather, &c.	Farmer's Calendar.
1	Good Friday	quence is the poor farmer's sum-
2	☾ Perigree <i>fair &</i>	mer work all goes, to use a homely
3	Easter day <i>pleasant</i>	phrase, "to pay for a dead horse,"
4	Easter Monday St. Ambrose	& the farmer must run into debt for
5	Easter Tuesday	the next year's supplies. Thus he
6		continues in debt and torment. Now
7	♃ sets 10h 56m eve <i>windy</i>	the wants of life are but few; had
8	♂ ♀ ♂ <i>some rain</i>	the farmer gone without many of
9	♄ ☽ ♃	the articles he had bought on cre-
10	1st Sun aft Easter, Low Sun	dit, and which he could have gone
11	Low tides	without and felt no inconvenience
12		from it, the toil of the season he
13	☾ south 7h 27m eve <i>clouds up</i>	would have performed with a light
14		heart, with a reasonable prospect
15	♄ Apogee <i>for a storm</i>	that another year he might enjoy
16		more of the good things of this life
17	♃ 2nd Sun aft Easter <i>some</i>	without being indebted for them.
18	High tides <i>rain</i>	Apply every dry substance you
19	Alphege ♂ ♀	can collect and spare, for litter for
20	☽ enters ♃ <i>growing</i>	your stock through the winter; it
21		will not only keep them warm, and
22	Gr. elon ♀ <i>showers</i>	thus save hay, but be also the
23	St. George K George IV B.	means of giving life and vigour to
24	3rd Sun aft Easter	all parts of your husbandry, by the
25	St. Mark Ds Glouc B	manure it will make.
26		Try to convert to the best use &
27	Low tides ☽ stat. <i>profit every article that will pro-</i>	motate the growth and better the con-
28	♃ sets 10h 14m eve <i>pleasant</i>	dition of your cattle, horses, sheep,
29		& cows. Give out all such coars-
30	☾ Perigree <i>and mild</i>	

2. / Printed Parms
Lower Berkeley

V. Month. **MAY, 31 Days.** 1825

There beat her heart, and haay'd her breast,
 And pleaded ev'ry sense;
 And there the glowing death of lust
 Did blast her innocence.

But when the fragrant beans began
 Their fallow blooms to shed,
 Her sparkling eyes their lustre lost;
 Her cheek, its roses fled.

Full Moon 2d day, 10h. 45m. mor. | Last Qr. 9th day, 5h. 7m. eve.

D	D	S	S	Days	S	Sun's	()	Ris.	Moon	(Full						
M	w	rises	sets	length	FA	decl N	A	& sets		South	PL	SEA						
1	B	5	3	6	57	14	8	3	15	4	13	4	27	12	1	25	6	46
2	M	5	2	6	58	14	10	3	15	22	14	RISES		morn	m	7	45	
3	Tu	5	1	6	59	14	14	3	15	40	15	9	16	1	0	25	8	0
4	W	4	59	7	1	14	16	3	15	58	16	10	19	2	0	1	8	45
5	Th	4	58	7	2	14	18	4	16	15	17	11	13	2	58	23	9	43
6	F	4	57	7	3	14	20	4	16	32	18	11	59	3	55	19	10	40
7	S	4	56	7	4	14	22	4	16	49	19	MORN.		4	49	19	11	34
8	B	4	55	7	5	14	24	4	17	5	20	0	35	5	38	MORN	23	
9	M	4	54	7	6	14	26	4	17	21	21	1	6	6	25	14	1	10
10	Tu	4	53	7	7	14	30	4	17	37	22	1	33	7	8	26	1	63
11	W	4	52	7	8	14	32	4	17	53	23	1	58	7	50	*	2	35
12	Th	4	50	7	10	14	34	4	18	8	24	2	21	8	31	20	3	16
13	F	4	49	7	11	14	36	4	18	23	25	2	44	9	12	19	3	57
14	S	4	48	7	12	14	40	4	18	37	26	3	9	10	14	14	4	39
15	B	4	47	7	13	14	42	4	18	52	27	3	36	10	38	26	5	23
16	M	4	46	7	14	14	44	4	19	6	28	4	6	11	24	8	6	9
17	Tu	4	45	7	15	14	46	4	19	20	29	SETS		12	13	20	6	58
18	W	4	44	7	16	14	48	4	19	33	1	8	51	1	4	11	7	49
19	Th	4	43	7	17	14	50	4	19	46	2	9	47	1	58	16	8	43
20	F	4	42	7	18	14	52	4	19	59	3	10	35	2	52	29	9	37
21	S	4	42	7	18	14	54	4	20	11	4	11	17	3	46	26	10	31
22	B	4	41	7	19	14	56	4	20	23	5	11	53	4	39	25	11	24
23	M	4	40	7	20	14	58	4	20	35	6	0	26	5	31	21	EVEN	
24	Tu	4	39	7	21	15	0	4	20	46	7	MORN		-6	22	23		
25	W	4	38	7	22	15	2	3	20	57	8	0	56	7	12	19	1	57
26	Th	4	37	7	23	15	4	3	21	8	9	1	25	8	2	21	2	47
27	F	4	37	7	23	15	6	3	21	18	10	1	51	8	54	2	3	39
28	S	4	36	7	24	15	8	3	21	28	11	2	25	9	48	20	4	33
29	B	4	35	7	25	15	10	3	21	37	12	2	59	10	43	m	5	28
30	M	4	35	7	25	15	10	3	21	46	13	3	38	11	12	19	6	27
31	Tu	4	34	7	26	15	10	3	21	55	14	Rises		MORN	1	7	26	

Dear W. sailed

18
 Ne
 D
 M
 B
 2
 3
 4
 5
 6
 7
 B
 9
 10
 11
 12
 13
 14
 B
 16
 17
 18
 19
 20
 21
 B
 23
 24
 25
 26
 27
 28
 B
 30
 31

1825

1825

MAY begins on Sunday.

Spring.

And when she saw the pods increase,
The ruddier cherries stain,
She felt her silken robe grow tight,
Her waist new weight sustain.

3. 11

And when the mowers went afield,
The yellow corn to ted,
She felt her burden stir within
And shook with tender dread.

2-6 6 5

New Moon 17th day 7h 52m eve. First Qr. 25th day 2h 37m morn
Full Moon 31st day 7h 44m ev.

5h. 7m. eve.

on	PL	Full	SEA
1	25	6	46
rn	m	7	45
0	25	8	0
0	4	8	45
58	23	9	43
55	10	10	40
49	19	11	34
38	MORN	23	
25	14	1	10
8	26	1	63
50	2	35	
31	20	3	16
12	3	57	
14	14	4	39
38	26	5	23
24	8	6	9
13	20	6	58
4	11	7	49
58	16	8	43
52	29	9	37
46	10	10	31
39	25	11	24
31	EVEN		
22	23		
12	1	57	
2	21	2	47
54	3	39	
48	20	4	33
43	m	5	28
12	19	6	27
7	7	7	26

D Aspects, Holidays, Weather,
M &c.

Farmer's Calendar.

B	4th Sun aft Easter St. Philip
2	♀ stat [& St James
3	Invention of the cross fair
4	High tides and pleasant
5	♀ sets 8h 39m eve
6	signs of
7	rain
B	5th Sun aft Easter Rogation
9	[Sunday
10	Low tides clear and
11	♂ ♀ warm
12	Ascension day, Holy Thurs.
13	
14	♂ ●
B	Sund. aft Ascen Day
16	
17	rain
18	♂ ● ♀
19	
20	Columbus died, 1506 AE 59
21	● enters ☐ very pleasant
B	Whit Sunday
23	Whit Monday
24	Whit Tuesday
25	good time
26	● stat. Calvia died 1564.
27	
28	⊙ perigree for
B	Trin. Sun. K. Charle II res-
30	[tored.
31	planting.

todder as you intend for feeding by the first of this month. When the spring advances it will become useless except for litter, and to this use all should be applied that can possibly be spared. Every load of manure that you can contrive to make, becomes better to you than so much value in cash; for the next crops will pay you a much greater interest, & the increased worth of your lands by means of this manure, will render this better than compound interest.

Sovereign remedy for Drunkenness.—Whenever you feel an inclination to drink spirituous liquor, drink cool fresh water. Obey the direction, and even if you are the greatest drunkard, you will become a temperate sober man.

Flaxseed boiled and mixed with other feed has been found productive of better results, at less expence than most other things used in fattening cattle. 'Tis also found to succeed wonderfully well in raising calves. Boil half a pint of Flaxseed in two quarts of water. 19 minutes to a jelly; then add skim milk enough for three calves, or in

10-15

14

2 11 25 10 3 2 1 7 1

VI. Month.

JUNE, 30 Days:

1925.

And when the winds of autumn list
 Along the stubble field,
 Then could the damsel's piteous plight
 No longer be conceal'd.

... a harsh and angry man,
 With furious voice revil'd ;
 " Hence from my sight ! I'll none of thee—
 I'll harbour not thy child."

Last Qr. 8th day 10h. 3m. mor. | New Moon, 16th day, 3h 3 m. mor.

D	O	S	S	Days	S	Sun's	☉	☽	RIS.	Moon	☽	FULL
M	W	RISES.	SETS.	length	FA	decl N	A	& SETS	South	PL.	SEA	
1	W	4 33	7 27	15 12	3 22	4 15	8 59		0 41	17	8 24	
2	Th	4 33	7 27	15 12	3 22	12 16	9 48		1 39	V	9 19	
3	F	4 32	7 28	15 12	2 22	19 17	10 30		2 34	14	10 12	
4	S	4 31	7 29	15 14	2 22	26 18	11 3		3 27	27	11 0	
5	B	4 31	7 29	15 16	2 22	33 19	11 32		4 15	33	11 45	
6	M	4 30	7 30	15 16	2 22	40 20	11 58		5 0	22	MORN	
7	Tu	4 30	7 30	15 18	2 22	46 21	12 22		5 43	X	0 28	
8	W	4 29	7 31	15 18	2 22	51 22	MORN 30		6 24	16	1 9	
9	Th	4 29	7 31	15 20	1 22	57 23	0 45		7 5	28	1 50	
10	F	4 29	7 31	15 20	1 23	1 24	1 8		7 46	Y	2 31	
11	S	4 28	7 32	15 22	1 23	6 25	1 33		8 29	22	3 14	
12	B	4 28	7 32	15 22	1 23	10 26	2 1		9 13	8	3 58	
13	M	4 27	7 32	15 22	0 23	14 27	2 33		10 1	16	4 46	
14	Tu	4 27	7 33	15 22	0 23	17 28	3 12		10 51	29	5 36	
15	W	4 27	7 33	15 24	0 23	20 29	3 58		11 45	II	6 30	
16	Th	4 27	7 33	15 24	S 23	22 30	4 30	SETS	EVEN 40	25	7 25	
17	F	4 27	7 33	15 24	0 23	24 31	5 11		1 36	35	8 21	
18	S	4 27	7 33	15 26	1 23	26 32	5 51		2 30	22	9 15	
19	B	4 27	7 33	15 26	1 23	27 33	6 25		3 23	31	10 8	
20	M	4 27	7 33	15 26	1 23	27 34	7 56		4 14	23	10 59	
21	Tu	4 27	7 33	15 26	1 23	28 35	8 25		5 5	32	11 50	
22	W	4 27	7 33	15 26	1 23	28 36	8 53		5 54	18	EVEN 39	
23	Th	4 27	7 33	15 26	2 23	27 37	MOR 23		6 45	27	1 30	
24	F	4 27	7 33	15 24	2 23	26 38	0 30		7 36	16	2 21	
25	S	4 27	7 33	15 24	2 23	25 39	0 54		8 30	3	3 15	
26	B	4 27	7 33	15 24	2 23	23 40	1 30		9 26	15	4 11	
27	M	4 27	7 33	15 24	3 23	21 41	2 13		10 23	29	5 8	
28	Tu	4 27	7 33	15 24	3 23	18 42	3 3		11 21	4	6 6	
29	W	4 28	7 32	15 22	3 23	15 43	4 0	MORN.		26	7 2	
30	Th	4 28	7 32	15 22	3 23	12 44	RISES		0 17	V	7 58	

Get 7 A on a Move

1825.

1826.

JUNE begins on Wednesday.

Summer

And fast, amid her fluttering hair,
 With clenched fist he gripes.
 And seized a leather thong and lash'd
 Her sides with sounding stripes.

Her lily skin, so soft and white,
 He ribb'd with bloody whistles;
 And thrust her out, tho' dark the night;
 Tho' sleet and storm assails.

3h 8 m. MOR.

D	PL	FULL SEA
11	17	8 24
39	19	9 19
34	14	10 12
27	27	11 0
15	11	11 45
0	22	MORN
43	0	20
24	16	1 9
5	28	1 50
46	2	2 31
29	22	3 14
13	3	3 58
1	16	4 46
51	29	5 36
45	11	6 30
40	25	7 25
36	8	8 21
30	22	9 15
23	10	8
14	2	10 59
5	12	11 50
54	18	EVEN 39
45	1	1 30
36	16	2 21
30	3	3 15
26	15	4 11
23	29	5 8
21	1	6 6
ORN.	26	7 2
17	15	7 58

First Qtr. 23d day 7h 1m morn. Full Moon 30th day 5h 50m morn

D	Aspects, Holidays, Weather, &c.	Farmer's Calendar.
1	<i>fine weather</i>	If you yard your cows at night thro' the Summer, collect the manure into a heap in some convenient part of the barn yard, to prevent its being wasted by the sun and rains; a few minutes attention in the morning when the cows are turned out to pasture, would collect a heap of several loads in a season, ready for your wheat or grass grounds in autumn. Cart on occasionally a cart load, or two, at a time, some rich earth, and cover the heap; which will commix with the manure by fermentation, and become rich compost, thus increasing the quantity and augmenting your wealth. The horse dung also from the stable, if added to the heap, with the earth will much improve its quality. Potatoes are more profitable food for your working horses than even oats or grain, as this food renders them less liable to bots and leaves,
2	☉	
3	☽ rises 3h 50m morning	
4	<i>vegetation</i>	
5	1st Sund after Trinity D of	
6	[Gumb	
7		
8	<i>variable</i>	
9	Low tides <i>for some</i>	
10	☾ apogee ☽ stat <i>days</i>	
11	St Barnabus	
12	2d Sund after Trinity	
13	<i>a storm</i>	
14	☾ sets 1h 4m eve	
15		
16	☉ eclip invisible <i>at hand</i>	
17	St Alban	
18	Battle of Waterloo 1815	
19	3d Sund after Trinity	
20		
21	☽ enters ☉ <i>clear and pleasant</i>	
22		
23	☽ perigee ☽ ☽	
24	Nativity of St John Baptist	
25	High tides	
26	4th Sund after Trinity	
27		
28	☾ sets 10h 13 m eve	
29	St. Peter:	

July 6

VII. Month. JULY, 31 Days. 1825.

Up the harsh rock on flinty paths,
 The maiden had to roam;
 On tot'ring feet she grop'd her way,
 And sought her lover's home,

"A mother thou hast made of me
 Before thou mad'st a wife;
 For this upon my tender breast,
 These livid stripes are rife.

Last Quatr. 8th day 3h 10 m. m | New Moon 15th day 6h 11 m ev.

D	D	S	S	Days	S	Sun's	D	D	RIS.	Moon	D	FULL
M	W	RISES	SETS.	length.	SE	decl N	A	&	&	South	PL	SEA
1	F	4 28	7 32	15 22	3 23	8 15	8	56	1 11	22	8	0
2	S	4 29	7 31	15 20	3 23	4 16	9	27	2 0	22	8	45
3	R	4 29	7 31	15 20	4 22	59 17	9	54	2 48	18	9	33
4	M	4 29	7 31	15 20	4 22	55 18	10	19	3 31	18	10	16
5	Tu	4 30	7 30	15 18	4 22	49 19	10	42	4 14	12	10	59
6	W	4 30	7 30	15 18	4 22	43 20	11	5	4 55	24	11	40
7	Th	4 31	7 29	15 16	4 22	37 21	11	29	5 36	18	0	21
8	F	4 31	7 29	15 16	5 22	31 22	11	55	6 18	18	1	3
9	S	4 32	7 28	15 14	5 22	24 23	MORN		7 2	8	1	47
10	B	4 32	7 28	15 14	5 22	16 24	0	25	7 47	12	2	32
11	M	4 33	7 27	15 12	5 22	9 25	1	1	8 36	24	3	21
12	Tu	4 33	7 27	15 10	5 22	11 26	1	44	9 29	14	4	14
13	W	4 34	7 26	15 8	5 21	52 27	2	34	10 23	20	5	8
14	Th	4 35	7 25	15 6	5 21	43 28	3	33	11 19	18	6	4
15	F	4 35	7 25	15 4	6 21	34 28	3	sets	EVEN 15	17	7	0
16	S	4 36	7 24	15 4	6 21	24 1	8	21	1 10	15	7	55
17	B	4 37	7 23	15 0	6 21	14 2	8	52	2 3	15	8	48
18	M	4 38	7 22	15 2	6 21	4 3	9	22	2 55	14	9	40
19	Tu	4 39	7 21	14 58	6 20	53 4	9	51	3 46	14	10	31
20	W	4 39	7 21	14 56	6 20	42 5	10	22	4 37	29	11	22
21	Th	4 40	7 20	14 54	6 20	31 6	10	54	5 29	27	1	8
22	F	4 41	7 19	14 52	6 20	19 7	12	29	6 23	27	2	2
23	S	4 42	7 18	14 50	6 20	7 8	0	9	7 17	25	2	2
24	B	4 43	7 17	14 48	6 19	55 9	morn		8 13	25	2	58
25	M	4 44	7 16	14 46	6 19	42 10	6	55	9 10	1	3	55
26	Tu	4 45	7 15	14 44	6 19	29 11	1	48	10 6	22	4	51
27	W	4 46	7 14	14 42	6 19	15 12	2	48	11 0	18	5	45
28	Th	4 47	7 13	14 40	6 19	2 13	3	51	11 51	18	6	36
29	F	4 48	7 12	14 38	6 18	48 14	rises		morn	22	7	24
30	S	4 49	7 11	14 36	6 18	33 15	7	53	0 39	14	8	0
31	B	4 50	7 10	14 34	6 18	19 16	8	19	1 24	26	8	9

*16 July Toward Palace
 Experiment*

1825

1825

JULY begins on Friday.

Summer.

"Behold"—and then with tender sobs,
She sank upon the floor—
"Make good the evil thou hast wrought,
My injured name restore."

"Poor soul! I'll have thee hous'd and nurs'd;
'Thy terrors I lament,
Stay here, we'll have some further talk,
'The old one shall repent'—

day 6h 11m ev.

moon	D	FULL	SEA
South	PL	SEA	
1	11	22	8 0
2	0	22	8 45
2	48	18	9 33
3	31	✕	10 16
4	14	12	10 59
4	55	24	11 40
5	36	☽	0 21
6	18	18	1 3
7	2	8	1 47
7	47	12	2 32
8	36	24	3 21
9	29	☐	4 14
10	23	20	5 8
11	19	☽	6 4
EVEN	15	17	7 0
1	10	☾	7 55
2	3	15	8 48
2	55	☾	9 40
3	46	14	10 31
4	37	29	11 22
5	29	☽	EVEN
6	23	27	1 8
7	17	☾	2 2
8	13	25	2 58
9	10	☽	3 55
10	6	22	4 51
11	0	☽	5 45
11	51	18	6 36
morn	0	39	7 24
1	24	26	8 0
1	24	26	8 9

First Qrtr. 22d day (1h 20m morn) Full M. 29th day 5h 43m eve.

D	Aspects Holidays Weather, &c.	Farmer's Calendar.
1	apogee. ☽ H. ☽ ☽	If your fields be invested with thistles, mow them down in this month. The seed will then be rendered abortive, and the stalks being hollow, will fill with water and so destroy the roots. Persevere in this course 2 or 3 years, and you will entirely eradicate these vegetable marauders.
2	Visit. of B V Mary,	
B	5th Sun. after Trinity.	In a number of fields wheat soaked in a decoction of elder and lime was not infested by any insects, when that in neighbouring fields was much injured by the worm at root.
4	Translation of St. Martin	
5	Thunder and	To preserve Bacon—The following method is recommended as effectual in preserving bacon and smoked beef from insects. Make a lye of wood ashes, and boil it till it is very strong, dip each piece of the meat in it, let it dry, and hang it in a smoke house and no insect will injure it, and the taste of the lye will not be perceived even on the outside.
6	☽ rises 2h 25m morn	
7	☽ apogee, Rain	Bushes cut in the old of the moon in August, and the sigo in the heart, generally die. It is best to attend to it.
8		
9	Very low tides, prepare	Where meadows are to be mown
B	6th Sunday after Trinity	
11	for hay making	
12		
13	☽ D variable	
14	French Revolution com 1789	
15	for some days	
16	High tides	
B	7th Sunday after Trinity	
18	Mahomet died 634	
19	R George IV crowned 1821	
20	Margaret	
21	Thunder Showers	
22	Magdalen	
23	☽ outers ☾	
B	8th Sunday after Trinity	
25	St James Sultry	
26	St Anne ☽ ☽ ☽ ☽	
27	Dog days begin	
28	☽ sets 8h 53m eve	
29	Gr elonga ☽	
30	Thunder	
B	9th Sunday after Trinity	

John G. K. ... 31
May 21

VIII. Month.

AUGUST, 31 Days,

1825

" I have no time to rest a. d. wait ;
That saves not my good name,
If thou with honest soul hast sworn,
O leave me not to shame !

But at the holy altar be
Our union sanctified,
Before the people and the priest,
Receive me for thy bride.

Last Qr. 6th day, 8h. 0m. eve | New Moon 14d day, 2m 44m. mor.

D	D	S	S	Days	S	Sun's	()	RIS	Moon	(FULL
M	W	Rises	SETS	length	SL	decl N	A	&	& SETS	South	PL	SEA
1	M	4 51 7	9 14 32	6 18 4	17 8 44	2 7	*					
2	Tu	4 52 7	8 14 30	6 17 48	18 9 7	2 49	20	9	34			
3	W	4 53 7	7 14 26	6 17 33	19 9 31	3 31	10	3	16			
4	Th	4 54 7	6 14 21	6 17 17	20 9 57	4 12	14	4	57			
5	F	4 55 7	5 14 22	6 17 1	21 10 26	4 56	26	4	41			
6	S	4 56 7	4 14 18	6 16 45	22 10 59	5 40	8	0	25			
7	B	4 57 7	3 14 16	5 16 28	23 11 37	6 27	20	1	12			
8	M	4 59 7	1 14 14	5 16 11	24 0 24	7 17	II	2	2			
9	Tu	5 0 7	0 14 12	5 15 54	25 MORN.	8 10	15	2	55			
10	W	5 1 6	59 14 8	5 15 36	26 1 18	9 5	28	3	50			
11	Th	5 2 6	58 14 6	5 15 19	27 2 19	10 0	45	4	45			
12	F	5 3 6	57 14 2	5 15 1	28 3 27	10 56	25	5	41			
13	S	5 5 6	55 13 0	5 14 43	29 4 41	11 52	6	6	37			
14	B	5 6 6	54 14 58	4 14 24	30 6	SETS	EV	46	24	7	31	
15	M	5 7 6	53 13 56	4 14 6	1 7 54	1 39	17	8	24			
16	Tu	5 8 6	52 13 54	4 13 47	2 8 26	2 32	24	9	17			
17	W	5 10 6	50 13 50	4 13 28	3 8 58	3 26	10	11	5			
18	Th	5 11 6	49 13 48	4 13 8	4 9 33	4 20	24	11	1			
19	F	5 12 6	48 13 46	3 12 49	5 10 12	5 16	17	EVEN	1			
20	S	5 13 6	47 13 42	3 12 29	6 10 57	6 12	22	1	57			
21	B	5 15 6	46 13 40	3 12 9	7 11 48	7 9	1	1	54			
22	M	5 16 6	44 13 38	3 11 49	8 MORN	8 6	19	2	51			
23	Tu	5 17 6	43 13 34	3 11 29	9 0 46	8 59	13	3	44			
24	W	5 19 6	41 13 32	2 11 9	10 1 47	9 51	15	4	26			
25	Th	5 20 6	40 13 30	2 10 48	11 2 51	10 39	28	5	24			
26	F	5 21 6	39 13 26	2 10 30	12 3 55	11 26	33	6	11			
27	S	5 23 6	37 13 24	1 10 6	13 4 58	MORN	23	6	54			
28	B	5 24 6	36 13 22	1 9 45	14 RISES	0 9	*	7	37			
29	M	5 25 6	35 13 18	1 9 24	15 7 17	0 52	17	8	0			
30	Tu	5 27 6	33 13 16	0 9 2	16 7 41	1 33	29	8	18			
31	W	5 28 6	32 13 12	0 8 41	17 8 6	2 15	17	9	0			

F
D
M
1
2
3
4
5
6
B
8
9
10
11
12
13
B
15
16
17
18
19
20
B
22
23
24
25
26
27
B
29
30
31

“ Unequal matches must not blot
The honors of my line ;
Art thou of wealth or rank for me,
To harbour thee as mine,

What's fit and fair I'll do for thee,
Shalt yet retain my love—
Shalt wed my huntsman—and we'll then
Our former transport prove.”

Mon.	PL	FULL	SEA
7	*	9	34
49	20	10	16
31	7	10	57
12	14	11	41
56	26	0	25
40	8	1	12
27	20	2	2
17	11	2	55
10	15	3	50
5	28	4	45
0	6	5	41
56	25	6	37
52	18	7	31
46	24	8	24
39	17	9	17
32	24	10	11
26	11	11	5
20	21	1	57
16	7	1	54
12	22	2	51
9	1	3	44
6	19	4	26
59	7	5	24
51	15	6	11
39	28	6	54
26	11	7	37
9	1	8	0
52	17	8	18
33	29	9	0
15	7		

First Qr 20th day 5h 19m eve. | Full Moon 28th day 7h 46m morn

D	Aspects, Holidays, Weather, &c.	Farmer's Calendar.
1	Lammas Day	twice in a season the 1st crop ought to be cut earlier than if mown but once, in order that the roots may recover immediately, and be ready for vegetating anew.
2	clear & pleasant	
3		
4	☾ apogee fine	
5	Transfiguration of our Lord	When the grass is cut late the vegetation of the roots stops for some time. The grass however which is thus cut early, will not be so heavy as that which is cut later, as it will shriek after cutting; but the roots will not be so much exhausted, and will afford a larger crop the next time of cutting, or next summer if cut but once in a season
6	haying	
B	10th Sun after Trinity	
8	sultry	
9	signs of rain	
10	St Lawrence	
11	thunder	
12	King Geo IV born 1762	
13		
B	11th Sun after Trinity	
15	High tides	
16	Duke of York born	
17	♂ ● showers	Whoever will apply an ointment made of gunpowder, brimstone and common grease, behind the necks of their lambs, will be sure of having them preserved from all kinds of vermin. The quantity necessary to be made use of is so small that one shillings worth is sufficient to dress upwards of 200 lambs.
18		
19	Gr alon ☿ clear	
20	Lowtides and	
B	12th Sun aft Trin D of Cuthb [born	
22	not	
23	☿ enters ♍	
24	St Bartholomew	
25		
26	½ south 7h 30m eve	
27	thunder	
B	13th Sun aft Trin St Augustin	
29	St John Baptist beheaded	
30	showers	
31	☾ apo cool evenings	

IX. Month, SEPTEMBER 30 Days. 1825.

“Thy wicked soul, hard hearted man,
 May pangs in hell await!
 Sure if not suited for thy bride,
 I was not for thy mate.

Go, seek a spouse of nobler blood,
 Nor God's just judgments dread—
 So shall ere long some base born wretch
 Defile thy marriage bed,

Last Qr. 26th day 11h 54m. mor. New Moon 12th day, 10h 46m. mor

D	D	S	S	Days	S	Sun's	●	D	RIS.	Moon	D	FULL
M	w	RISES.	SETS.	length	FA	decl N	A	& SETS	South.	PL	SEA	
1	Th	5 29	6 31	13 6	0	8 19	18	8 34	2 58	23	9	43
2	F	5 31	6 29	13 2	1	7 57	19	9 4	3 42	23	10	27
3	S	5 32	6 28	13 0	1	7 35	20	9 40	4 27	16	11	12
4	B	5 33	6 27	12 56	1	7 13	21	10 23	5 16	28	MOON	I
5	M	5 35	6 25	12 62	1	6 51	22	11 14	6 6	II	0	51
6	Tu	5 36	6 24	12 50	2	6 29	23	MORN	7 0	23	1	45
7	W	5 38	6 22	12 46	2	6 6	24	0 11	7 54	26	2	39
8	Th	5 39	6 21	12 44	2	5 44	25	1 14	8 40	19	3	34
9	F	5 40	6 20	12 42	3	5 21	26	2 23	9 43	11	4	28
10	S	5 42	6 18	12 38	3	4 58	27	3 37	10 38	18	5	5
11	B	5 43	6 17	12 34	3	4 35	28	4 54	11 32	10	6	17
12	M	5 45	6 15	12 32	4	4 12	29	6 SETS	EVEN	26	18	7 11
13	Tu	5 46	6 14	12 28	4	3 49	1	7 4	1 21	18	8	6 2
14	W	5 47	6 13	12 26	4	3 26	2	7 38	2 18	18	9	2
15	Th	5 49	6 11	12 22	5	3 3	3	8 18	3 14	17	9	59
16	F	5 50	6 10	12 20	5	2 40	4	9 3	4 13	18	10	53
17	S	5 52	6 8	12 16	5	2 17	5	9 53	5 11	18	11	56
18	B	5 53	6 7	12 14	6	1 54	6	10 50	6 9	16	EVEN	54
19	M	5 55	6 5	12 10	6	1 30	7	11 51	7 4	29	1	49
20	Tu	5 56	6 4	12 6	6	1 7	8	MOR.	7 57	19	2	42
21	W	5 57	6 3	12 4	7	0 44	9	0 54	8 46	25	3	31
22	Th	5 59	6 1	11 9	7	N	20	1 57	9 33	33	4	18
23	F	6 0	6 9	11 56	7	S	3	3 0	10 17	20	5	7
24	S	6 2	5 58	11 54	8	0 27	12	4 0	10 59	X	5	44
25	B	6 3	5 57	11 50	8	0 50	13	4 59	11 41	14	6	26
26	M	6 5	5 55	11 48	8	1 13	14	RISES	MORN	26	7	7
27	Tu	6 6	5 54	11 46	1	1 37	15	6 19	0 23	7	7	50
28	W	6 7	5 53	11 42	9	2 0	16	6 47	1 5	19	8	3
29	Th	6 9	5 51	11 38	9	2 24	17	7 17	1 49	13	8	3
30	F	6 10	5 50	11 38	9	2 47	18	7 52	2 34	13	9	1

1825.

1825 SEPTEMBER begins on Thursday. Autumn.

Then traitor feel how wretched they
 In hopeless shame immerst;
 Then smite thy forehead on the wall,
 With horrid curses burst.

Roll thy dry eyes in wild despair—
 Unsooth'd thy grinning woe.
 Thro' thy pale temples fire the ball,
 And sink to fiends below.

Day	10h	46m	mor
Moon	D	FULL	
South.	PL	SEA	
2	58	23	9 43
3	42	6	10 27
4	27	16	11 12
5	16	28	MORNI
6	6	II	0 51
7	0	23	1 45
7	54	25	2 39
8	40	19	3 34
9	45	11	4 28
10	38	18	5 5
11	32	22	6 17
11	26	18	7 11
1	21	12	8 6
2	18	18	9 2
3	14	24	9 59
3	4	31	10 58
3	5	11	11 56
0	6	9	16 EVEN 54
1	7	4	29 1 49
1	7	57	12 2 42
4	8	46	25 3 31
7	9	33	33 4 19
0	10	17	20 5 7
0	10	59	31 5 44
59	11	41	14 6 28
5	MORN	23	7 7 50
9	0	26	19 8 38
17	1	49	13 8 30
52	2	34	13 9 1

First Qrtr 19th day 2h 15m morn. Full Moon 26th day 11h 59m eve

D	Aspects, Holidays, Weather, &c.	Farmer's Calendar.
1	Giles warm and	fore your glass in the afternoon.
2	London burnt 1666 O'S	If you do, the boys will shiver for
3	pleasant	want of clothes next winter. I
B	14th Sunday after Trinity	would advise young ladies not to
5	Dog days end	take snuff, nor old ones so much
6	♁ Low tides	as to become loathsome to them-
6	more	selves or disagreeable to others.
7		Dress well but not uncomfortably
8	Nat of B V Mary	Daddy Jonathan you may quit
9	thunder	laughing at such strictures on
10	♀ rises 3h 52m morn	your family—you may need a
B	15th Sunday after Trinity	caution yourself, see that your
12	♁ ♀ very high tides	barn roof is whole, so that there
13	♁ perigee showers	will be no wet come to your grain
14	Holy Cross II ♁	or hay. Take those hogs from
15	signs of	your door, put them in a good
16	a storm	pen—throw them rich earth and
17	Lambert	other things, and you will have a
B	16th Sunday after Trinity	number of loads of good manure.
19	clear	Besides it will prevent fleas from
20	♁ Low tides and	keeping your boys and girls in
21	St Matthew hot	torture all night so that they can
22	♁ rises 4h 5m morn	do nothing all day.
23	♁ enters showers	Inoculate your apple trees this
24	at times	summer, or graft them next
B	17th Sunday after Trinity	spring without fail. This will
26	St Cyprian high	save all this puckering of the
27	High tides winds	mouth and smacking of lips on ac-
28	♁ apo ♁ ♄	count of poor cider. If you wish
29	St Michael Q of Witt B	to raise stock, put your mates and
30	St Jerome cool	

6. hulled Quercus.

X. Month. **OCTOBER 31 Days.** 1825

Collecting then, she started up,
 And thro' the hissing sleet,
 Thro' thorn and briar, thro' flood and mire
 She fled with bleeding feet.

"Where now" she cried, "my gracious God
 What refuge have I left!"
 And reach'd the garden of her home
 Of hope in man bereft.

Last Qr				5th day				2h 8m morning				New Moon 11th day				7h 16m even			
M	D	S	S	Days	S	Sun's	D	D	RIS.	M	ou	M	FULL	PL	SEA				
D	w	RISES.	SETS	length	SL	dec	S	A	& SETS	South		PL							
1	S	6	12	5	48	11	32	10	3	10	19	8	32	3	22	25	10	7	
2	B	6	13	5	47	11	30	10	3	34	20	9	17	4	11	II	10	56	
3	M	6	14	5	46	11	26	11	3	57	21	10	10	5	2	19	11	47	
4	Tu	6	16	5	44	11	24	11	4	20	22	11	9	5	54	☽	MRN.	39	
5	W	6	17	5	43	11	20	11	4	43	23	MRN.	14	6	46	15	1	31	
6	Th	6	19	5	41	11	18	12	5	7	24	0	30	7	39	28	2	24	
7	F	6	20	5	40	11	14	12	5	30	25	1	23	8	32	☾	3	17	
8	S	6	22	5	38	11	12	12	5	53	26	2	36	9	25	26	4	10	
9	B	6	23	5	37	11	8	13	6	15	27	3	50	10	18	☾	5	3	
10	M	6	24	5	36	11	6	13	6	38	28	5	7	11	12	26	5	57	
11	Tu	6	26	5	34	11	2	13	7	1	0	SETS	MORN	6	26	7	6	51	
12	W	6	27	5	33	11	0	13	7	24	1	6	19	1	2	5	m	8	50
13	Th	6	29	5	31	10	56	14	7	46	2	7	7	52	3	5	26	9	50
14	F	6	30	5	30	10	54	14	8	9	3	8	48	4	6	1	10	51	
15	S	6	31	5	29	10	50	14	8	31	4	8	49	5	4	25	11	49	
16	B	6	31	5	27	10	48	14	8	53	5	9	49	5	58	☾	EVEN	43	
17	M	6	34	5	26	10	44	14	9	15	6	10	52	5	58	☾	1	34	
18	Tu	6	36	5	24	10	40	15	9	37	7	11	56	6	6	7	2	22	
19	W	6	37	5	23	10	36	15	9	59	8	MORN.	0	8	23	16	3	8	
20	Th	6	38	5	22	10	34	16	10	21	9	1	2	9	5	29	3	50	
21	F	6	40	5	20	10	30	15	10	42	10	2	1	9	47	☾	4	32	
22	S	6	41	5	19	10	28	15	11	4	11	3	1	10	29	23	5	14	
23	B	6	42	5	18	10	24	15	11	25	12	4	1	11	10	☾	5	55	
24	M	6	44	5	16	10	22	16	11	46	13	5	5	11	54	16	6	39	
25	Tu	6	45	5	15	10	20	16	12	7	14	5	59	II	28	7	23		
26	W	6	46	5	14	10	16	16	12	27	15	RISES	MORN	5	58	0	38	0	
27	Th	6	48	5	12	10	14	16	12	48	16	5	35	1	24	22	8	9	
28	F	6	49	5	11	10	10	16	13	9	17	6	6	2	13	II	8	58	
29	S	6	50	5	10	10	8	16	13	28	13	7	7	2	3	4	16	9	
30	B	6	52	5	8	10	6	16	13	48	19	8	8	3	3	55	29	10	
31	M	6	53	5	7	10	2	16	14	7	20	9	8	3	3	55	29	10	

54 hulled white

1825

1825. OCTOBER begins on Saturday. Autumn

On hand and foot she feebly crawl'd
 Beneath the bower unblest ;
 Where with'ring leaves and gathering snow
 Prepar'd her only rest.

There rending pains and darting throes
 Assail her shudd'ring frame ;
 And from her womb a lovely boy,
 With wail and weeping came

16m even

M	PL	FULL SEA
2	25	10 7
1	II	10 56
2	19	11 47
54	MRN	39
46	16	1 31
39	28	2 24
32	3	3 17
25	26	4 10
18	12	5 3
12	26	5 57
RN	2	6 52
	26	7 51
	5	8 50
	5	26 9 50
	6	10 51
	4	25 11 49
	58	12 43
	49	21 1 34
	37	2 22
	23	3 8
	5	29 3 50
	47	3 32
	29	23 4 14
0	10	5 55
I	54	6 39
	28	7 23
MORN	0	8 0
	38	8 9
I	24	22 8 58
2	13	II 8 49
3	4	16 9 40
3	56	29 10

First Qtr 18th day 2h 52m eve. Full Moon 26th day 5h 48m even

D	Aspects, Holidays Weather, &c.	Farmer's Calendar.
1	Remigius Gr elou X	cows to the finest mals—it will
2	18th Sunday after Trinity	Doubly repay you.
3		Do not talk to your boys as if
4	☉ stat	their opinion was never right—If
5		you do they will surely become
6	Faith Low tides	disgusted and discouraged. As I
7		consider woollen to be a bad con-
8		ducter of heat, I would advise e-
9	19th Sun aft Trin. St Deys	very really accomplished gentle-
10		man to wear a complete woollen
11	☾ perigree	suit through the summer, especi-
12	☽ ♀ II very high tides	ally in dogdays ; taking off a coat
13	Transf of K Edw Conf	in the middle of the day may be
14	☽ rises 3h 58m more	injurious to health.—Boys, you
15		may fish a day after harvest and
16	20th Sun after Trinity	hunt foxes a few days next win-
17	Ethelreda	ter ; but do not make a business
18	St Luke	of either.
19	Low tides	Gather your late seeds and dry
20		them carefully ; Sow Onions to
21	☽ south 4h 10m more	stand over the winter—Nurse
22		your late potatoes, Hoe and weed
23	21st Sun aft Trinity	ruta-baga. Finish digging early
24	☾ enters ♍	potatoes.—Finish pulling your late
25	Orispin ☾ apogee	onions.—Gather winter apples
26		before the frost injure them.
27	High tides	The praises of "the hasty pud-
28	St Simon & St Jude	ding" have been deservedly sung
29		and surely those at least whose
30	22d Sun after Trinity	"bones are made of indian corn,"
31	Sup ☉	will readily assent to the justness

Release of the ...

XI. Month. **NOVEMBER, 30 Days,** 1825.

Forth from her hair a silver pin
 With hasty hands she drew,
 And prest against its tender heart,
 And the sweet babe she slew,

Erst when the act of blood was done
 Her soul in guilt abhorr'd ;
 " My Jesus ! what has been my deed ?
 Have mercy on me Lord ! "

Last Qr. 31 day 2h 7m. ev | New Moon, 10th day 4h. 59m. morn.

D	D	S	S	Days	S	Sun's	●	(RIS	Moon's)	Full		
M	w	rises	SETS	length	F	decl	A	&	SETS	South	A	SEA		
1	Tu	6 54	5 5	6 9	58	16	14	27	21	10	10	4 47	11 32	
2	W	6 56	5 5	4 9	56	16	14	48	22	11	15	5 38	24 MOR 23	
3	Th	6 57	5 5	3 9	54	16	15	5	23	MORN.		6 28	1 14	
4	Fr	6 58	5 5	2 9	52	16	15	23	24	0	23	7 19	21 2 4	
5	S	6 59	5 5	1 9	48	16	15	42	25	1	33	8 10	12 2 55	
6	B	7 1	4	59	9	48	16	16	0	26	2	46	9 1	20 3 46
7	M	7 2	4	58	9	44	16	16	18	27	4	1	9 54	2 4 39
8	Tu	7 3	4	57	9	42	16	16	35	28	5	17	10 48	19 5 33
9	W	7 4	4	56	9	40	16	16	53	29	6	34	11 47	17 6 32
10	Th	7 5	4	55	9	38	16	17	10	♂	SETS	EVEN	47	19 7 32
11	Fr	7 7	4	53	0	36	16	17	27	1	6	32	1 48	1 8 33
12	S	7 8	4	52	9	34	16	17	43	2	7	33	2 49	19 9 34
13	B	7 9	4	51	9	30	16	17	59	3	8	37	3 47	17 10 32
14	M	7 10	4	50	9	28	15	18	15	4	9	43	4 41	17 11 26
15	Tu	7 11	4	49	9	26	15	18	31	5	10	48	5 31	17 EVEN 16
16	W	7 12	4	48	9	22	15	18	46	6	11	51	6 18	13 1 3
17	Th	7 13	4	47	9	20	15	19	1	7	MORN.		7 2	25 1 47
18	Fr	7 14	4	46	9	18	15	19	15	8	0	53	7 44	18 2 29
19	S	7 15	4	45	9	16	15	19	29	9	1	52	8 25	19 3 10
20	B	7 16	4	44	9	14	14	19	43	10	2	51	9 6	19 3 51
21	M	7 17	4	43	9	12	14	19	56	11	3	50	9 48	13 4 33
22	Tu	7 18	4	42	9	10	14	20	10	12	4	48	10 32	25 5 17
23	W	7 19	4	41	9	8	14	20	22	13	5	47	11 18	8 6 3
24	Th	7 20	4	40	9	6	13	20	35	14	6	46	MORN.	19 6 51
25	F	7 21	4	39	9	4	13	20	46	15	RISES		0 6	17 7 41
26	S	7 22	4	38	9	2	13	20	58	16	6	3	0 56	13 8 0
27	B	7 23	4	37	9	0	12	21	9	17	6	58	1 47	26 8 32
28	M	7 24	4	36	8	58	12	21	20	18	7	59	2 39	26 9 24
29	Tu	7 24	4	36	8	56	12	21	30	19	9	3	3 30	21 10 15
30	W	7 25	4	35	8	54	11	21	40	20	10	10	4 21	11 10 6

George Jolly W

1825.

1825. NOVEMBER begins on Tuesday. Autumn

With bloody hands beside the pond
 A shallow grave she tore
 "There rest in God, there shame and want,
 'Thou canst not suffer more.

Me vengeance waits, my poor, poor child,
 Thy wounds shall bleed afresh,
 When ravens from the gallows tear
 Thy mothers mouldring flesh."

h. 59m. morn.

First Qr. 17th day 7h 17m morn | Full Moon 25th day 11h 8m. morn

Month	Day	Full	SEA
47	⊕	11	32
38	24	MOR	23
28	Ω	1	14
19	21	2	4
10	mg	2	55
1	20	3	46
54	△	4	39
48	19	5	33
47	∩	6	32
VEN	47	7	32
48	↑	8	33
49	19	9	34
47	∨	10	32
41	17	11	26
31	☾	EVEN	16
18	13	1	3
2	25	1	47
7	44	✕	2
8	25	19	3
9	6	∩	3
9	48	13	4
10	32	25	5
11	18	8	6
MORN	19	6	51
0	6	□	7
0	56	13	8
1	47	26	8
2	39	⊕	9
3	30	21	10
4	21	Ω	11

D Aspects, Holidays, Weather, || Farmer's Calendar.
 M &c.

1	All Saints	frosts	of the poet's eulogiums on the
2	All Souls	rather	cheap, yet delicious repast which
3	Prs Sophia born		this pudding eaten with milk af-
4	Low tides	cold for	fords. We hope the farmers will
5	Powder Plot 1605		never so far ape the fashions of
B	23d Sund aft Trinity		the proud and wealthy, as to ac-
7		some days	quire a taste sufficiently vitiated
8	Prs Augusta Sophia bn		to reject this invigorating food.
9	☉ perigee		A due proportion of such diet is
10	♃ ♀	look out	no doubt as well calculated to
11	St Martin	for a	raise a fine hardy and comely
12	High tides	cold	race of men and women; as any
B	24th Sund aft Trinity		other whatever. Away then with
14		N E storm	your slops of tea, and hold fast to
15	Machutus		hasty pudding and milk:
16			Where swardland is intended
17	Low tides	changes to	for indian corn it should be broken
18	Great Earthquake 1755		up in the fall; and if it be a stiff
19		milder	or wettish soil it ought to be
B	26th Sund aft Trinity	Edm.	thrown up in high narrow ridges
21	☉ apogee	[K and Martyr	by a second ploughing. In the
22	Cecilia ☉ enters ♄		Spring the ground should be well
23	St Clement	frosty	manured and mellowed with
24		with a	ploughing immediately before
25	Catharine ☉ ecl. pty inv		planting.
26	♀ ● ♃ High tides		
B	Advent Sunday		
28		little	
29	♃ south 1h 26m morn		
30	St Andrew	snow	

10th P. M. 20th 1825

Full 7

XII Month DECEMBER 31 Days 1825.

Hurd by the bower tier gibbet staade
 Her skull is still to show,
 It seems to eye the barren grave
 Three spans in length below.

That is the spot where grows no grass,
 Where falls no rain or dew,
 Whence steals along the pond of toads
 A hov'ring fire so blue

Last Qr. 2d day 11h 53m evening | Moon 9th day, 4h 20m even.

D	M	S	S	Days	S	Sun's	Q	M. ris.	Moon	M	FULL
		RISES	SETS.	length	F	decl S	A	& SETS	South	PL	SEA.
1	T	7 26	4 34	8 52	11	21 50	21	11 17	5 11	18	11 56
2	F	7 26	4 34	8 50	10	21 59	22	MORN	5 59	Mo	44
3	S	7 27	4 33	8 50	10	22 8	23	0 26	6 48	15	1 33
4	B	7 28	4 32	8 48	10	22 16	24	1 36	7 37	15	2 22
5	M	7 28	4 32	8 46	9	22 24	25	2 48	8 29	14	3 14
6	T	7 29	4 31	8 44	9	22 31	26	4 2	9 23	29	4 8
7	W	7 29	4 31	8 44	8	22 38	27	5 16	10 21	m	5 6
8	T	7 30	4 30	8 42	8	22 45	28	6 28	11 20	28	6 5
9	F	7 30	4 30	8 40	7	22 51	♂	SETS	EVE 20	↑	7 5
10	S	7 31	4 29	8 40	7	22 56	1	6 7	1 20	27	8 5
11	B	7 31	4 29	8 40	6	23 1	2	7 13	2 17	vr	9 2
12	M	7 32	4 28	8 38	6	23 6	3	8 20	3 10	24	9 55
13	T	7 32	4 28	8 38	6	23 10	4	9 25	3 59	24	10 44
14	W	7 32	4 28	8 38	5	23 14	5	10 29	4 46	21	11 31
15	T	7 33	4 27	8 38	5	23 18	6	11 30	5 29	x	Ev 14
16	F	7 33	4 27	8 36	4	23 20	7	MORN	6 11	16	1 56
17	S	7 33	4 27	8 36	4	23 23	8	0 30	6 52	28	1 37
18	B	7 33	4 27	8 36	3	23 26	9	1 28	7 33	γ	2 18
19	M	7 33	4 27	8 36	3	23 26	10	2 26	8 16	21	3 1
20	T	7 33	4 27	8 36	2	23 27	11	3 25	9 0	♂	3 45
21	W	7 33	4 27	8 36	2	23 28	12	4 24	9 48	15	4 33
22	T	7 33	4 27	8 36	1	23 28	13	5 23	10 37	27	5 22
23	F	7 33	4 27	8 36	1	23 27	14	6 19	11 27	Π	6 12
24	S	7 33	4 27	8 36	0	23 26	15	7 11	MORN	22	7 5
25	B	7 33	4 27	8 36	8	23 25	16	RISES	0 20	⊖	7 57
26	M	7 33	4 27	8 36	0	23 23	17	6 41	1 12	18	8 0
27	T	7 33	4 27	8 36	1	23 21	18	7 47	2 4	Ω	8 49
28	W	7 33	4 27	8 36	2	23 18	19	8 56	2 55	15	9 40
29	T	7 32	4 28	8 38	2	23 15	20	10 5	3 45	28	10 30
30	F	7 32	4 28	8 35	3	23 11	21	11 15	4 33	11	11 18
31	S	7 32	4 28	8 36	3	23 7	22	0 27	5 22	26	Mo 7

10th P. M. 20th 1825

1825.

1825. DECEMBER begins on Thursday. Winter.

And nightly, when the ravens come,
Her ghast is seen to glide;
Pursues and tries to quench the flame,
And pines the pool beside.

20m even.

D	M	FULL SEA.
h	PL	
11	18	11 56
59	♄	Mo 44
48	15	1 33
37	♁	2 22
29	14	3 14
23	29	4 8
21	m	5 6
20	28	6 5
20	↑	7 5
20	27	8 5
17	v	9 2
10	24	9 55
59	♁	10 44
46	21	11 31
29	♄	Ev 14
11	16	1 56
52	28	1 37
33	γ	2 18
16	21	3 1
0	♁	3 45
48	15	4 33
37	27	5 22
27	Π	6 12
RN	22	7 5
20	♁	7 57
12	18	8 0
4	♁	8 49
55	15	9 40
45	28	10 30
33	♄	11 18
22	26	Mo 7

First Qtr 17th day 2h 52m morn. Full Moon 25th day 4h 59m morn

D	Aspects, Holidays Weather, &c.	Farmer's Calendar.
1		Can we reflect on the months
2	☽ rises 5h 52m morn	that are past, without a sweet emo-
3	Low tides	tion and without blessing the parent
B	2d Sun in Advent	of Nature, who has crowned the
5	☽ ♁	year with his mercies? We are
8	Nuptias	now living upon the productions of
7	⊕ perigee	summer and autumn. We have ob-
8	Conception of B. V. Mary	served how active nature has been
9	☽ eclipse invisible	during these five seasons, in fulfil-
10	☽ ♁ High tides	ling the Creator's beneficent views
B	3d Sunday in Advent	in favour of man—how plentiful
12		has the autumn harvest been! The
13	Lucy Gr elou	earth has now fulfilled its design
14		for this year, and is going to rest
15		for a time. Thus nature is continu-
16		ously active during many months;
17		and even in its present rest is not
B	4th Sunday in Advent	useless. Let us ask ourselves if we
19	(Apogee	have been equally active; have we
20		so employed our time as to be able
21	St Thomas ☽ enters ♋	to show the fruits of it? You now
22	♄ stat	count your sheaves; ought we not
23	♁ ♁	also to count our virtues and good
24	♃ south 5n 24m morn	works? Have the advantages and
B	Christmas Day	pleasures of the summer and au-
26	St Stephen	tumn made us better or more grate-
27	St John	ful? And are we conscious, that
28	Innocents	the past summer like many others
29	♁ south 11h eve	has not been wasted on us.
30		
31	Sylvester Inf ☽ ♁ ♁	

h/pa

The Kings Ministers.

Lord High Chancellor Earl of Eldon
 Lord Chief Justice Lord Abbot
 Secretaries of State. } Home Depart..... Right Hon. Robert Peel
 } Foreign Affairs.... Right Hon George Canning
 } For the Colonies... Earl Bathurst
 First Lord of the Treasury..... Earl of Liverpool
 First Lord of the Admiralty..... Lord Viscount Melville
 Chancellor of the Exchequer... Right Hon F Robinson
 Secretary at War..... Rt. Hon Viscount Palmerston
 President of the Council Earl Harrowby
 Lord Privy Seal Earl of Westmorland
 Master General of the Ordnance Duke of Wellington
 Lord Stewart..... Marquis of Cholmondeley
 Lord Chamberlain Marquis of Hertford
 Master of the Horse Duke of Montrose
 Paymaster of the Forces Right Hon Sir Charles Long
 Chan. of the Duchy of Lancaster Lord Bexley
 Master of the Mint Lord Maryborough
 Treasury of the Navy and Pre- }
 sident of the Board of Trade } Right Hon F J Robinson
 V Presid. of the Board of Trade. Right Hon Charles Grant
 First Com. of Land Revenue.... Right Hon F Huskison
 Postmasters General..... } Earl of Chichester
 } Marquis of Salisbury
 Attorney General Sir Robert Gifford Knight
 Solicitor General Sir Jno S Copley Knight.

STAFF OF THE ARMY

In Nova-Scotia and its Dependencies, under the Com-
 mand of His Excellency Lieutenant General Sir
JAMES KEMPT, K. G. C. B. &c. &c. &c.

Captain York, 52nd Foot, Lord F. Assistant Commissary Generals ;
 Lennox, 7th do Aides de Camp ; A. Grant & P. Charlier, Esquires,
 Lieutenant Colonel Cowper, Mi- Deputy Assistant Commissary Gen-
 litary Secretary ; Lieut. Colonel eral of Accounts ; J Blair, Esq.
 Harris, Deputy Adjutant General ; Barrack Master ; Doctor A Baxter
 Lieut. Colonel Beresford, Deputy Inspector of Hospitals ; A P Brad-
 Quarter-master General ; Major ley Esq, Ordnance Surgeon ; Doc-
 Bazalgette, Brigade Major ; C. J. tors John Bell and H. G. Parkins,
 Forbes, Esq Depy. Commissary. Hospital Assistants ; J Carter, Esq
 General ; A. Veith, Esq. Deputy Apothecary to the Forces ; Lieut
 Commissary General of Accounts ; Colonels Woodhouse, Harris and
 George Swiney, James Slade, Ol- Cochran. Inspecting Field Officers
 ver Goldsmith, William Low and of Militia
 William Milliken, Esqrs. Deputy

Garrison of Halifax,

Lieutenant MacColla Town Major; Rev J T Twining Officiating Chaplain; J Williams Town Sergeant.

Windsor.

A MacDougall Esq Barrack Master; Doctor T Brisbane Hospital Assistant.

Annapolis.

Doctor James Wilson, Hospital Assistant.

Cape Breton.

Doctor Doyle, Staff Surgeon; Lt Schwartz Town Adjutant; Lieut. Samuel Rigby Barrack Master

New Brunswick.

His Excellency Sir Howard Douglas, Bart Governor; Lt Douglas 3d Foot Guards Aid de Camp; T Price Esq Assistant Commissary General; Charles A Clarke & H C Darling Esqrs Deputy Assistant Commissary Generals; John E Woolford Assistant Barrack Master General; J Q Short Esq Staff Surgeon; Lieutenant Gallagher Town Major; Rev R Willis Officiating Chaplain at St John Rev George Best ditto at Fredericton.

Rev Jerome Alley ditto at St Andrews

Prince Edward Island.

His Excellency Colonel Ready. Lieutenant Governor J F Holland Esq Ordnance Storekeeper. R Lane Town Major B D S. Croix Hospital Mate Rev T Aldin Officiating Chaplain

Newfoundland.

Ensign Green, fort Major C W Beverly and W Stevens Esquires Deputy Assistant Commissary Generals Rev F W Carrington Officiating Chaplain

Bermuda.

Sir Wm Lumley, Governor Lt E M Goldsrick Town Major W Tucker Esq Barrack Master Lt Farris commanding Royal Engineers Lt Griffin do Artillery T F Winter Esq Asst Com Genl. R Lee & James Reid Esqrs Deputy Assistant Commissary General's J Hutchison Esq Ordnance Surgeon J Crawford Esq Hospital Assistant Rev John Lough Officiating Chaplain.

Officers of H. M. Ordnance.

John W Tapp Esq Storekeeper, C H Fife senior Clerk, James Forrester, junior clerk, Charles N Fife, Master Carpenter, James Plummer Master Armourer.

Engineer Department.

Colonel Arnold, Lieuts. Blackerstone, Tinning and Pooley, Engineers, Richard Creed clerk of Works, W Rogers, T Gouge, and J G Toler Clerks, John E. White and W. H. Tapp, Clerks Ordnance Store branch, Major Blair, Barrack Office. J Winniett, Richard Inglis, & Isaac Rigby, jr. clerks.

Officers of His Majesty's Naval Yard.

A F Jones Esq Master Shipwright, John Douglas Esq Master Attendant, James Ritchie Clerk, Thomas Matthews Gate Porter.

OFFICERS OF THE ARMY.

<p style="text-align: center;">Royal Artillery <i>Halifax.</i></p> <p>Lieut Col Forster Capt Strabenzie <i>Lieutenants</i></p> <p>S Lake Asst Adjutant Lyster, Asst Qr Mr Cornelious and Long- more.</p> <p>Surgeon Bradley <i>New Brunswick.</i></p> <p>Captain King Lt A Runnacles <i>Bermudas</i></p> <p>Lieutenant Griffin <i>Newfoundland</i></p> <p>Brevet Major Skinner. Royal Engineers <i>New Brunswick</i></p> <p>Captain Barry <i>Newfoundland</i></p> <p>Brevet Major Lewis <i>Bermuda</i></p> <p>Brevet Major Blanchard</p> <p>Lieutenants Farris and Crawley.</p> <p>74th REGIMENT.</p> <p>"The Elephant" "Assaye" "Seringapatam" "Busaco" "Fuentes d' Onor" "Ciudad Rodrigo" "Badajoz" "Salamanca" "Vittoria" "Pyrenées" "Nivelle" "Orthes" "Poulouse" "Peninsula" Colonel</p> <p>Hon Sir C Colville G C B & G C H Lieut General</p>	<p style="text-align: center;"><i>Lieut Colonel</i></p> <p>John A Mein</p> <p style="text-align: center;"><i>Majors</i></p> <p>David Steward Wm Moore</p> <p style="text-align: center;"><i>Captains</i></p> <p>D MacQueen G Hillier m Eyre J Crabb Francis Ansell d Joshua Wilson Thomas Jones Thos Mannin W M Crawley</p> <p style="text-align: center;"><i>Lieuts.</i></p> <p>Jason Hassard John Alves Charles King Wm Graham A Atkinson Robert Barker R Davies Wm Black Bart Burnet T W Yates W Ramsden <i>ad d</i></p> <p style="text-align: center;"><i>Ensigns</i></p> <p>L M'Pherson C A Campbell George Gore Amealey Eyre Thomas Gorlen Ang. F Ansell Ch A Vallancey Paymaster J Hassard Adjt Wm Ramsden lt d Q M Don Fraser Surgeon C Grant Asst Sur. R Rankin</p> <p style="text-align: center;"><i>Agents</i></p> <p>Hoskinson and Sons</p> <p>81st REGIMENT.</p> <p>"Maida" "Coruona" "Peninsula"</p>	<p style="text-align: center;">Colonel</p> <p>Sir James Kempt, G C B and G C H. maj General.</p> <p style="text-align: center;"><i>Lieutenant Colonel</i></p> <p>Andrew Creagh <i>Majors</i></p> <p>P C Taylor J M Wardrop.</p> <p style="text-align: center;"><i>Captains</i></p> <p>Rich Cole m. J Duval Charles French G W Horton Mont Cairnes Samuel Jepkins C F MacLean K Montgomery</p> <p style="text-align: center;"><i>Lieutenants</i></p> <p>J Sisson Adj Thomas Manning T C Wheat George Smyth J A Lutman David Duval E T Thomson Henry Dixon Charles Oakley William Hall John Browne</p> <p style="text-align: center;"><i>Ensigns</i></p> <p>R Hamilton P C Marsh Wm M'Donald Jas Douglass G V Creagh G Reeves Pay A Thompson Adj J Sisson lt Q M J Roberts Sur Wm Cogan A S Jas Ewing</p> <p style="text-align: center;"><i>Agent</i></p> <p>Lawrie & Son</p>
---	---	---

ARMY.

Colonel
 James Kempt, G
 B and G C H. maj
 neral
 Lieutenant Colonel
 ew Creagh
 Majors
 Taylor
 Wardrop
 Captains
 Cole m.
 val
 les, French
 Horton
 Cairnes
 el Jenkins
 MacLean
 Montgomery
 Lieutenant
 son Adj
 nas Manning
 Wheat
 ge Smyth
 utman
 y Duval
 Thomson
 y Dixon
 es Oakley
 m Hall
 Browne
 Ensigns
 milton
 laish
 P Donald
 ouglass
 reagh
 ves
 Thompson
 Sisson Lt
 Roberts
 m Cowan
 s Ewing
 Agent
 & Son

96th REGIMENT

Colonel
 Jos Fuller m gen
 Lt Colonel
 John Herries
 Majors
 J W Paty J c
 Henry White
 Captains
 W Hume, m
 R C Mansel m
 A Cairncross
 Richard Getbar
 John Garland
 H B Hyde

J W S Waller
 R W Brough

Lieutenants

R Spratt
 T Kennedy
 J Dowling
 L F Jones
 Wm Kidman
 E Sutherland
 A Robertson
 P S Nugent
 W L Cary
 A M Kenzie
 W Qusely

Ensigns

R Cross
 J Telford
 D Costello
 G W Story
 Don O'Brian
 T A Sonter
 Pay C J Furlong
 Adj E Sutherland
 Q M J Murchison
 Sur J Shorland
 A S A M Andrew
Agents
 Greenwood & Co

Officers of His Majesty's Ships.

WILLOUGHBY LAKE, Esq. C. B. Rear Admiral of the White, and Commander in Chief of his Majesty's Ships and Vessels employed, and to be employed at Halifax, or the coast of N. America, &c. &c.

JUPITER, Rear Admiral Lake, C. B. ; J. B. Hutchins. Esq. secretary ; Captain, David Dunn, Esq, Lieutenants, Wm. Carleton, Allan F. Gardiner; S. N. Inglis, Courtney E. Boyle, W. A. Willis, Willoughby Lake Flag Lieut. James Wood master. Hamilton Baitie surgeon, George Seed assistant do. S Wallace do do. Rev. C Inglis Chaplain ; W A Davis Purser ; H Preddle Captain Marines, George Victor Lieut

SAMARANG, Capt Sir W Wiseman Bt Lieutenants W B M'Lenstock M F Brounrag E Plaggenborg W B Fuller master, H B Long Purser, A Henderson M D Surgeon, Walter Idington asst do, C Robertson Lieutenant Marines.

MENAI Captain Houston Stewart Esq, Lieutenants George Holbeck T M'Currie Win Pitt Canning, G B Baxer master, F Logan surgeon, James Boyle purser, Charles Roe Lieut Marines

DOTTEREL Captain Richard Hoare, Lieuts J Cobbe J B Driffild master John Jones, purser James Ozzard, surgeon R Marshall, asst do W P O'Kane

RIFLEMAN Captain, James Montague Esq, lieutenants James Shepherd F R Dashwood master T Trelexing, purser J D Keely, surgeon George Hogan asst do Wm Thompson

SAPPHO, Captain W Hotbam Esq Lieutenants J J P Newall Cornelious Ricketts J Perriah Master W R Chester purser, W. Burns M D, Surgeon, T R Duak assistant do,

Methodist Ministers in Nova Scotia District.

(Omitted in the eighth Page.)

Halifax—Rev Wm Temple & Rev Wm Black (supernumerary)
 Liverpool—Rev R Lusher Shelburne & Barrington—Rev G Miller
 St. Stephens—Rev Duncan McColl St. John N B—Rev Robert Alder
 Fredericton—Rev Jno Marshall Annapolis—Rev Sampson
 Busby Cumberland—Rev Stephen Bamford Windsor—Rev Mat-
 thew Richey; Harton Rev John B Strong; Parrsborough Rev Albert
 Desbrisay; Newport Rev John Snowball and Wm Bennet (supernu-
 merary); Lunenburg Rev George Oeth; Charlotte Town Prince Ed-
 ward Island Rev William Burt; Bedeque and Tryon do Rev George
 Jackson; Murray Harbour do. Rev Robert Crane.



List of the articles, which may be legally imported in-
 to Halifax from America, under the late Act of Parlia-
 ment, with a table of duties payable thereon.

ARTICLES.

Asses	Flour	Neat Cattle
Barley	Grain of any sort	Oats
Beans	Garden Seeds	Pease
Biscuit	Hay	Potatoes
Bread	Hemp	Poultry
Beaver, and all sorts of Fur	Heading Boards	Pitch
Bowsprits	Horses	Rye
Calavances	Hogs	Rice
Cocos	Hides	Staves
Cattle	Hoops	Skins
Cochineal	Hardwood or Mill Timber	Shingles
Coin and Bullion	Indian Corn Meal	Sheep
Cotton Wool	Indigo	Tar
Drugs of all sorts	Live Stock of any Sort	Tallow
Diamonds and Preci- ous stones	Lumber	Tobacco
Flax	Logwood	Turpentine
Fruits and Vegeta- bles	Mahogany, and other Wood for Cabinet	Timber
Fustick, and all sorts of Wood for Dyers' use	Wares	Tortoise-shell
	Masts	Wool
	Mules	Wheat
		Yards

District.
 (supernumerary)
 -Rev. G Miller
 -Rev Robert Al-
 -Rev Sampson
 -Rev Mal-
 -Rev Albert
 -Rev Prince, Ed-
 do Rev George

imported in-
 ct of Parlia-

Cattle
 Horses, for every £100 of the value thereof.....
 Neat Cattle, for every £100 of the value thereof.....
 All other Live Stock for every £100 of the value thereof.....

DUTIES.

	£	s	d
Barrel of Wheat Flour, not weiging more than 196 lbs net weight,.....	0	5	0
Barrel of Biscuit, not weighing more than 196 lbs net weight	0	2	6
For every Cwt. of Biscuit,.....	0	1	6
For every 100 lbs of Bread, made from Wheat or other Grain, imported in Bags or Packages.....	0	2	6
For every Barrel of Flour not weighing more than 196 lbs made from Rye, Peas, or Beans,.....	0	2	6
For every bush. of Peas, Beans, Rye or Calvances...	0	0	7
Rice, for every 100 lbs net weight.....	0	2	6
For every 1,000 Shingles, called Boston Chips, not more than 12 inches in length,.....	0	7	0
For every 1,000 Shingles being more than 12 inches in length	0	14	0
For every 1,000 Red Oak Staves,.....	1	1	0
For every 1,000 White Oak Staves or Headings.....	0	15	0
For every 1,000 feet of White or Yellow Pine Lumber, of one inch thick	1	1	0
For every 1,000 feet of Pitch Pine Lumber.....	1	1	0
Other kinds of Wood and Lumber, per 1,000 feet.....	1	8	0
For every 1,000 Wood Hoops.....	0	5	3
Horses, for every £100 of the value thereof.....	10	0	0
Neat Cattle, for every £100 of the value thereof.....	10	0	0
All other Live Stock for every £100 of the value thereof,.....	10	0	0

A Schedule of Articles allowed to be exported from Ports in Europe or in Africa, to any of His Majesty's Colonies, Plantations or Islands in America or the West Indies,

Anchovies	Brandy	Capers
Argol	Bullion	Cantharides,
Alabaster, or rough and worked	Brimstone	Corn
Anniseed	Boxwood	Cumminseed.
Amber	Beans	Coral
Almonds	Rotargo	Cork
Biscuit	Cattle	Cinnabar
	Currants	Cascaroo,

Caviar	Lava & Malta Stone	Precious Stones
Dates	for Buildings	Pearls
Essence of Bergumot	Lentils,	Punk
— of Citron	Lumber	Pumice Stone
— of Lemon	Manna	Peas
— of Orange	Mosaic Works	Peas
— of Lavender,	Medals	Parmesan Cheese
— of Roses	Meal	Quicksilver
— of Rosemary	Musk	Raisins
Emery Stone,	Marble, rough and	Rhubarb
Flour	worked	Rice
Fruit	Mill Timber,	Salt
Fruit dry & wet, pre-	Macaroni	Sauces
served in Bran-	Mules	Senna
dy and Sugar, in	Nuts of all kinds	Seammony
jars and bottles.	Oil of Olives	Sassa-parilla
Pigs	— of Almonds	Saffron
Garden Seeds	Opium	Safflower
Gum Arabic,	Orris Root	Shingles
— Mastic,	Ostrich Feathers,	Sponges
— Myrrh	Ochres	Staves
— Sicily,	Orange Buds, and	Sheep
— Ammoniac,	Peach	Yermillion
Grain	Olives	Vermicelli
Honey	Pickles, in Jars and	Whetstones
Jalap	Bottles	Wine
Incense	Paintings and Prints,	Wood Hoops
Juniper Berries	Pozzolana	

A Schedule of Duties payable on Articles imported into His Majesty's Colonies, Plantations or Islands in America or the West Indies, from Ports in Europe or Africa, under the Authority of the late Act of Parliament.

	£	s.	d.
Wine imported in bottles, viz:			
French Wine the tun of 252 gallons.....	10	10	0
Medeira Wine do do do.....	7	7	0
Portugal Wine do do do.....	7	7	0
Rhenish, Germany & Hun-	}	the tax of 252 gals.....	9 9 0
gary Wine			

Stones
 Stone
 Cheese
 Silver
 rb
 es
 Tony
 arilla
 u
 wer
 les
 es
 tion
 celli
 stones
 Hoops
 ported into His
 America or the
 der the Atho.
 £ s. d.
 10 10 0
 7 7 0
 7 7 0
 9 9 0

Spanish Wine, and Wine not } otherwise enumerated } do do do	7	7	0
And in addition to the specified Duties hereby imposed upon such Wines respectively, a further Duty for every £100 of the true and real value thereof	7	10	0
And for every Dozen of Foreign Quart Bottles in which such Wine may be imported.....	0	8	0
Corn, Flour, Grain } For every £100 of the true and Meal, Peas, Beans } real value thereof.....	12	0	0
Headings, for every 1,000.....	1	1	0
Lumber, viz. Yellow or White Pine per 1,000 feet... — All other descriptions	1	1	0
Mill Timber, the like.....	1	8	0
Shingles, for every 1,000, not exceeding 12 inches in length	10	0	0
Shingles for every 1,000, exceeding 12 inches.....	0	7	0
Staves, Oak, Red or White, for every 1,000.....	0	14	0
Wood Hoops, for every 1,000.....	1	1	0
	0	5	3

Alabaster
 Anchovies
 Argol
 Anniseed
 Amber
 Almonds
 Brandy
 Brimstone
 Botargo
 Box-wood
 Currants,
 Capers,
 Cascasou,
 Cantharides,
 Cummin-seed,
 Coral,
 Cork,
 Cinnamon,
 Dales,
 Essence of Bergamot
 — of Lemon,
 — of Roves,
 — of Citron
 — of Orange

Essence of Lavender
 — of Rosemary
 Emery Stone,
 Fruit, viz.
 — dry and preserved in Sugar
 — wet, preserved in Brandy
 Figs
 Gum Arabic
 — Maatic
 — Myrrh
 — Scilly
 — Ammoniac
 Honey,
 Jalap
 Juniper Berries
 Incense of frankincense
 Lava and Malta stone for building,
 Lentils,
 Manna

For every £100 of the true and real value thereof.

7 10 0

Marble, rough and worked
 Mosaic Work
 Medals
 Musks
 Macaroni
 Nuts of all kinds
 Oil of Olives
 — of Almonds
 Opium
 Orris Root
 Ostrich Feathers
 Ochres
 Orange buds & peel
 Olives
 Pickles in jars & btls.
 Paintings
 Pozzblana
 Pumica Stone
 Punk
 Parmesan Cheese
 Pickles
 Prints
 Pearls
 Precious Stones (except Diamonds)
 Quicksilver
 Raisins
 Rhubarb
 Rice
 Sausages
 Senna
 Scammony
 Sarsaparilla
 Saffron
 Safflower
 Sponges
 Vermilion
 Vermicelli
 Wine not in Bottles
 except Wine imported into Newfoundland
 Whetstones

For every £100 of the true and real value thereof

Table of Duties

Payable at the Excise on the following Articles, with the Drawback allowed on Legal Exportation.

ARTICLES	Excise per gal	Drawback
Wines—Champaigne, Madeira, Port, Claret, Lisbon and Sherry.....	1s. 9d	1s. 6d
All other Wines.....	1s. 3d	1s. 1d
* Rum and all other distill'd Spirituous Liquors...	1s.	10d
† Molasses.....	1s.	10d
‡ Brandy and Gin.....	1s. 3d	1s. 1d
† Sugar.....	per cwt	3s. 6d.
‡ Coffee.....	per lb.	1d.

Drawback Allowed.

- * For a quantity not less than 400 gallons.
- † For do not less than 1,000 gallons.
- ‡ 11d. to Quebec, and 10d. to other Colonies.
- † For a quantity not less than 10 cwt.
- ‡ For do not less than 500 lb.

