

Dear E.

Rec Jan 13

Jan 21

And Sonny  
Wright

BOTANIC GARDEN, CAMBRIDGE, MASS.

Jan 9,

1874

Thus reconciled with  
the check to meet bill  
for paper (quills - covers)  
I got a discount of 5%  
= 8.55 - which I have  
put to your credit - to pay  
anything you wish.

The envoi was probably  
due at St. Louis no earlier  
as Jan 6. -

When I see Dr. Nyman  
(he has just been at Club  
lately) I will learn about  
the Agave's post-conditions  
& let you know. I know  
only vaguely as yet.

Glad your expense is  
as I expected - bring credit.

The duplicates from the  
Bot. Books sent up here by



0 1 2 3 4 5 6 7 8 9 10

cm

copyright reserved



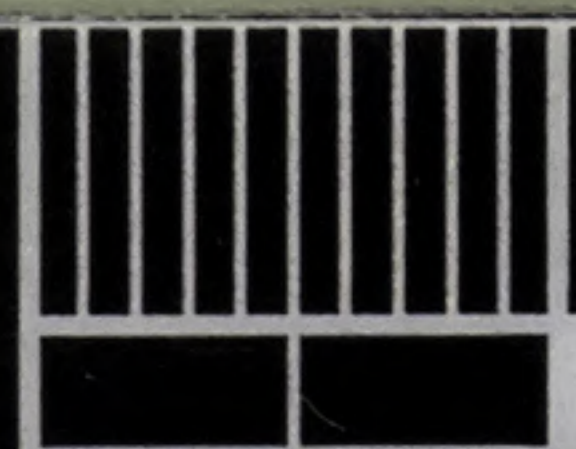
MISSOURI  
BOTANICAL  
GARDEN



A. Agassiz in part amount  
to a great deal —  
except the Myologia  
Europea — which I shall  
keep till we get Sullivan's  
copy — & then send to H.  
Jenny. I think —  
Pringsheim's Jahrbuch —  
— all vegetable anatomy  
But there are some  
2 or 3 dozen of small  
papers — some of which you  
may like.

MISSOURI BOTANICAL  
GEORGE ENGELMANN

Here you  
Stendel Monocotyled. ed. 2,  
Miquel Cycadaceae  
Linn. Gen. Pl. ed. 6,  
Brischly Lehrbuch  
— Handb. d. Pflanzl. 40 —  
Lemmerdi. Choro (Bonn, 1864)  
Martens Amantaceae  
{ Endlicher; Sartor Rea Pl.  
{ Benth Ann. de Legum.  
{ Fenzl Mollusgen  
{ Ann. Wien Museum.



0 1 2 3 4 5 6 7 8 9 10

cm

copyright reserved



MISSOURI  
BOTANICAL  
GARDEN



{ Kart Synopsis Jurgens,  
manica Germanica.

Any or all these I  
could put aside for you.

Ever, dear E,

Yours truly

A Gray

MISSOURI BOTANICAL GARDEN  
MANN PAPERS



0 1 2 3 4 5 6 7 8 9 10

cm

copyright reserved



MISSOURI  
BOTANICAL  
GARDEN



3 Kart Gynophorae Gynophorae  
in America Gynophorae

They are all there  
could not write for you

John, Jan 21

John Hunt

Alphonse

MISSOURI BOTANICAL GARDEN  
HERBARIUM PAPERS



0 1 2 3 4 5 6 7 8 9 10

cm

copyright reserved



MISSOURI  
BOTANICAL  
GARDEN



Rec July 20

Clear sunny day July 14, 1874

My Dear and Englishman

I am so glad you are going to Colorado, & I wish Mrs. Murray and I were to be with you. She thinks the air at Empire & Gypsum is perfect. My communicating with Parry you will find him sure, and he will be delighted.

— Oh, what long letters I should write you, if only I could find time. When I was doing College work, I could write — for I could not get steadily down at anything else.

Now, my whole mind is in Bromus — which (Mercurialis excepted) I never before studied. — being one of Darwin's I've put families — but in which he never really worked up any genus.



0 1 2 3 4 5 6 7 8 9 10

cm

copyright reserved



MISSOURI  
BOTANICAL  
GARDEN



Bentham writes that  
having done Appoyne  
he is now taking up Asclepiad.  
Perry had not sent me  
your little thing. I will  
send the lot to Bentham -  
as it is just in his way.

It is not here too - I my  
wife has fled to sea-shore  
at Beverly.

I have got that Euxalus  
crispus in flower, from Brainerd's  
seed you sent.

Watson will send you a  
proof sheet of his Index  
that you may see it is now  
going on.

I have not been able to find  
any sweet secretion in Sarcocolla  
purpurea - no doubt most  
of the water in that rains in

Our Zuccas (filamentosa)  
were all ruined & as good as  
killed - no fruit this year.  
And I did not find it out in  
time to see that cucumers in a

MISSOURI BOTANICAL  
GEORGE ENGELMANN



0 1 2 3 4 5 6 7 8 9 10

cm

copyright reserved



MISSOURI  
BOTANICAL  
GARDEN



neighbor's garden.

Now, you can leave the  
Medical business very much  
to keep - and over the  
winter too.

I'll tell you what  
you should do. Come &  
settle down here, - and  
manuscript. - 1. Compendium,

2. Quercus - with  
figures 4 - and then

your other things -

Then I can get on with  
the Apud by Hesse.

For I mean to hold you  
responsible for all your  
past genera.

I am now driving on the  
Manuscript part Compendium,

I have an idea to print  
- under title of Synoptical  
Flora of N. America? the  
2<sup>nd</sup> volume first - in two



0 1 2 3 4 5 6 7 8 9 10

cm

copyright reserved



MISSOURI  
BOTANICAL  
GARDEN



parts. Part 1. Solitaires to  
Coville - if you will  
help - can begin next year.  
Part 2. Endoparas. & Fleas -  
And then, if I live, I have  
any brains left - do the rest.  
If not that man must  
do it. He is a real worker.

Oh, but all work is so  
slow! Here I get on  
with these Eitrichia  
at the rate of a species a  
day. For God's sake, only Bentham  
can do good work any  
faster.

There - here is a long  
letter for you. Give me  
credit! And say you  
will abandon Physics. I  
help us out with Botany.  
We have only a few more  
productive years - and  
Gray is fairly minded for  
Endoparas  
A. Gray



0 1 2 3 4 5 6 7 8 9 10  
cm

copyright reserved



MISSOURI  
BOTANICAL  
GARDEN



Rec<sup>d</sup> Sept 10<sup>th</sup> Cambridge Sept. 3, 1874  
Am - " "

My dear husband  
Your postal is just  
in. Mike & I envy your  
enjoyment of that delicious  
air and fine scenery, but  
think you weak-minded  
to think Miss Peck for-  
bidding. Why Mrs S,  
can ride up perfectly  
well. - Now - she may -  
like Mrs. Gray - prefer to  
walk down the upper part

In spring I had over  
all her nest this to.  
and have manuscript  
the N. Am. species. -  
to the satisfaction.

I am glad you are attending  
to them in Colorado -  
where I have one or two  
new ones. And I suspect



0 1 2 3 4 5 6 7 8 9 10

cm

copyright reserved



MISSOURI  
BOTANICAL  
GARDEN



a hybrid or a m —  
you will see about this  
being up to hybrid —  
C. Parryi is the  
common yellowish one  
about you at Empire  
(Parry's 34 - referred to edule  
which is very diff. - Nasir's  
350, referred to Schinus molle  
- which is next to.

Look out for a hybrid  
between this & C. eriophora  
also.

Look out too for the  
stem and stemless C.  
Drummondii (acaulis)  
whether they fairly run  
together.

I sent you — to St.  
Louis — Britton's  
letters about Mellichampia  
H.

MISSOURI BOTANICAL  
GEORGE ENGELMANN



0 1 2 3 4 5 6 7 8 9 10  
cm

copyright reserved



MISSOURI  
BOTANICAL  
GARDEN



I advise B. to follow  
his own judgment —  
You will wish an ~~undoubted~~  
undoubted genius for so  
good a fellow.

So Riley is jealous  
of you! Greater yet  
he.

Such a pity we  
are not with you!

Kind remembrances to  
Mr. & Mrs. Peck.

Love to Parry.

Ever yours

A. Gray

ICAL GARDEN  
ANN PAPERS



0 1 2 3 4 5 6 7 8 9 10  
cm

copyright reserved



MISSOURI  
BOTANICAL  
GARDEN



This part comes

with part 4

Copyright



0 1 2 3 4 5 6 7 8 9 10

cm

copyright reserved



MISSOURI  
BOTANICAL  
GARDEN



Tell Parry his whole genus  
is monophthalma bellidiflora.  
of which Fremont got one specimen.  
I hope he got seeds.

BOTANIC GARDEN, CAMBRIDGE, MASS.

Recd Sept 15

Ans - 28

Sat, Sept. 1874

mailed Sunday

My dear E.

Your postal card was  
answered - after one day  
waiting for the comes of  
E. Engelmannii. These  
have not come !!!

Please try again!

Now - this paper -  
comes yours of 30<sup>th</sup>  
ult. & the single  
parcel

The yellow thistle is  
my C. Parryi (Schaen-  
ais)

The red one I'll tell  
when I see more of a



0 1 2 3 4 5 6 7 8 9 10

cm

copyright reserved



MISSOURI  
BOTANICAL  
GARDEN



Specimen -

Platanus in  
Europe, Greenland

subarctic America

& Asia ~~both~~

both simple &

branched - some

Japan as much

as your specimens

MISSOURI BOTANICAL GARDEN  
GEORGE ENGELMANN



0 1 2 3 4 5 6 7 8 9 10

cm

copyright reserved



MISSOURI BOTANICAL GARDEN



I send you some  
quills - percha -  
to wrap live things  
you want to send  
us.

In haste

Truly yours

i. e. "Truly Yours."

A Gray

MISSOURI BOTANICAL GARDEN  
GEORGE ENGELMANN PAPERS



0 1 2 3 4 5 6 7 8 9 10

cm

copyright reserved



MISSOURI  
BOTANICAL  
GARDEN



*[Faint, illegible handwritten text in cursive script, likely bleed-through from the reverse side of the page.]*

MISSOURI BOTANICAL GARDEN  
GEORGE ENGELMANN PAPERS



0 1 2 3 4 5 6 7 8 9 10

cm

copyright reserved



MISSOURI  
BOTANICAL  
GARDEN



Rec<sup>d</sup> Oct. 21<sup>st</sup>  
Nov 5

Catalpa DC

My dear Euphonia

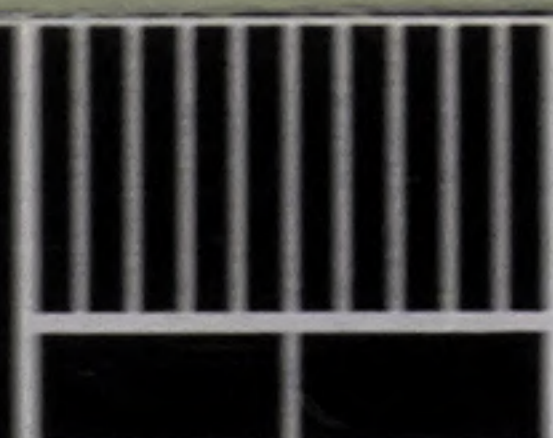
BOTANIC GARDEN, CAMBRIDGE, MASS.

17 Oct

1874

Wish to know you & Madame are back home safe & happy, after a pleasant vacation.

— What say you to this little Gentiana? All I have of it. But we can get more from France. — I have more of it, but started, if I did not send it back to Herb. Torr. Dr. Orislan (Whipple Exped.) got it in same district. — But I can't now lay hands on the specimen. I remember examining & thinking it very distinct & new. — But I defer to you on Gentiana. — Always excepting your theory of the placentation of such as our <sup>over</sup> all-over-ovuliferous species. I was sure of the contrary of your theory when I first noticed the character, but I have looked again at the fresh pistils. Walls truly ovuliferous!!



0  
cm

1

2

3

4

5

6

7

8

9

10

copyright reserved



MISSOURI  
BOTANICAL  
GARDEN



Shall I send you  
Swedish parcels now?  
— and big book I have  
for you — containing Jung's  
Pacif. Exped., Botany. In

Glad you are clear on  
*A. curculor* — The seeds  
of all but one were given  
to Sargent, to plant.

Has Sargent sent you anything  
of *Alnus balsamea*? If not  
I think he can; tho. that  
species is not raised much,  
Red White, I suppose the  
*C. Drummondii* is the one you  
mean.

*C. edule* is not in Colorado;  
the true one is Regis — Wisconsin.  
I ask Benth and not to cite  
"Mellichampia" You will get a  
letter from him some day.

I hope Mrs. E. is all right  
again.

MISSOURI BOT  
GEORGE ENGE



0 1 2 3 4 5 6 7 8 9 10  
cm

copyright reserved



MISSOURI  
BOTANICAL  
GARDEN



There is a letter letter from  
you - from St. Louis -  
But either Sargent or  
Watson has it now.

I will respond to any-  
thing it may contain  
later.

Ever yours

A Gray

MISSOURI BOTANICAL GARDEN  
GEORGE ENGELMANN PAPERS



0 1 2 3 4 5 6 7 8 9 10

cm

copyright reserved



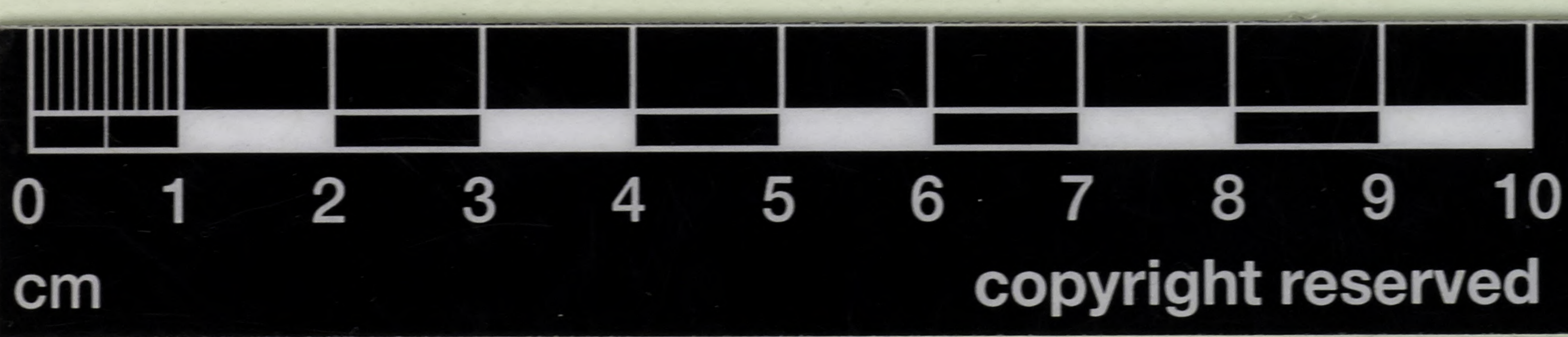
MISSOURI  
BOTANICAL  
GARDEN



There is a letter from  
you - from H. Davis  
sent with the packet on  
Wednesday the 10th  
I will refer you to my  
letter of the 11th

Wm. Davis  
Albany

MISSOURI BOTANICAL GARDEN  
HERBARIUM PAPERS



copyright reserved



MISSOURI  
BOTANICAL  
GARDEN



Dear Sir,

BOTANIC GARDEN, CAMBRIDGE, MASS.

Rec<sup>d</sup> Nov 17

Am Jan 3'

Nov. 13,

1874.

Yes, do rep Gen-  
tianas or much as  
you can.

I am printing new  
Cont. to Thistles,

Bromag, Miscellanea.

I will describe G. Numburgeni  
(you give me hints of character)  
and if you will give me  
a note to append - on what  
you have to say about them  
it will be nice.  
I send you my G. simplex.



0 1 2 3 4 5 6 7 8 9 10

cm

copyright reserved



MISSOURI  
BOTANICAL  
GARDEN



BOTANIC GARDEN, CAMBRIDGE, MASS.

1874

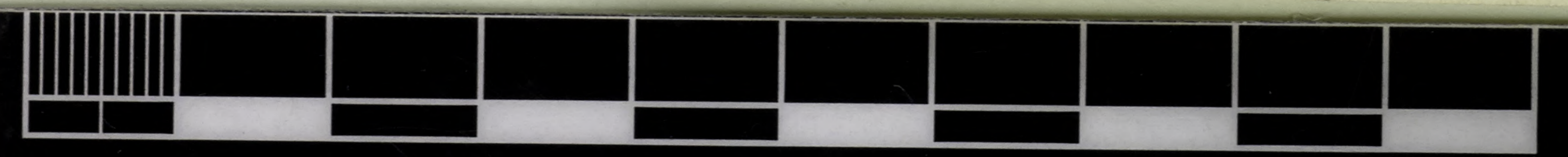
Am. 13

Recd. 13/1

*[Handwritten signature]*

*[Faint handwritten text, likely bleed-through from the reverse side of the page]*

MISSOURI BOTANICAL GARDEN  
GEORGE ENGELMANN



0 1 2 3 4 5 6 7 8 9 10

cm copyright reserved



MISSOURI BOTANICAL GARDEN



MISSOURI BOTANICAL GARDEN  
GEORGE ENGELMANN PAPERS

My dear Mr. ...  
I have just ...  
I have just ...  
I have just ...

Chrysothrix  
I have just ...  
I have just ...



0 1 2 3 4 5 6 7 8 9 10  
cm copyright reserved



MISSOURI  
BOTANICAL  
GARDEN



Only I had not yours a  
day sooner - to add to novel  
now come to you.

Request for seedling  
A. balsamea should be  
given to Sargent.

Ever  
A. Gray

I have just one  
Physalis - a number  
with.



0 1 2 3 4 5 6 7 8 9 10

cm

copyright reserved



MISSOURI  
BOTANICAL  
GARDEN