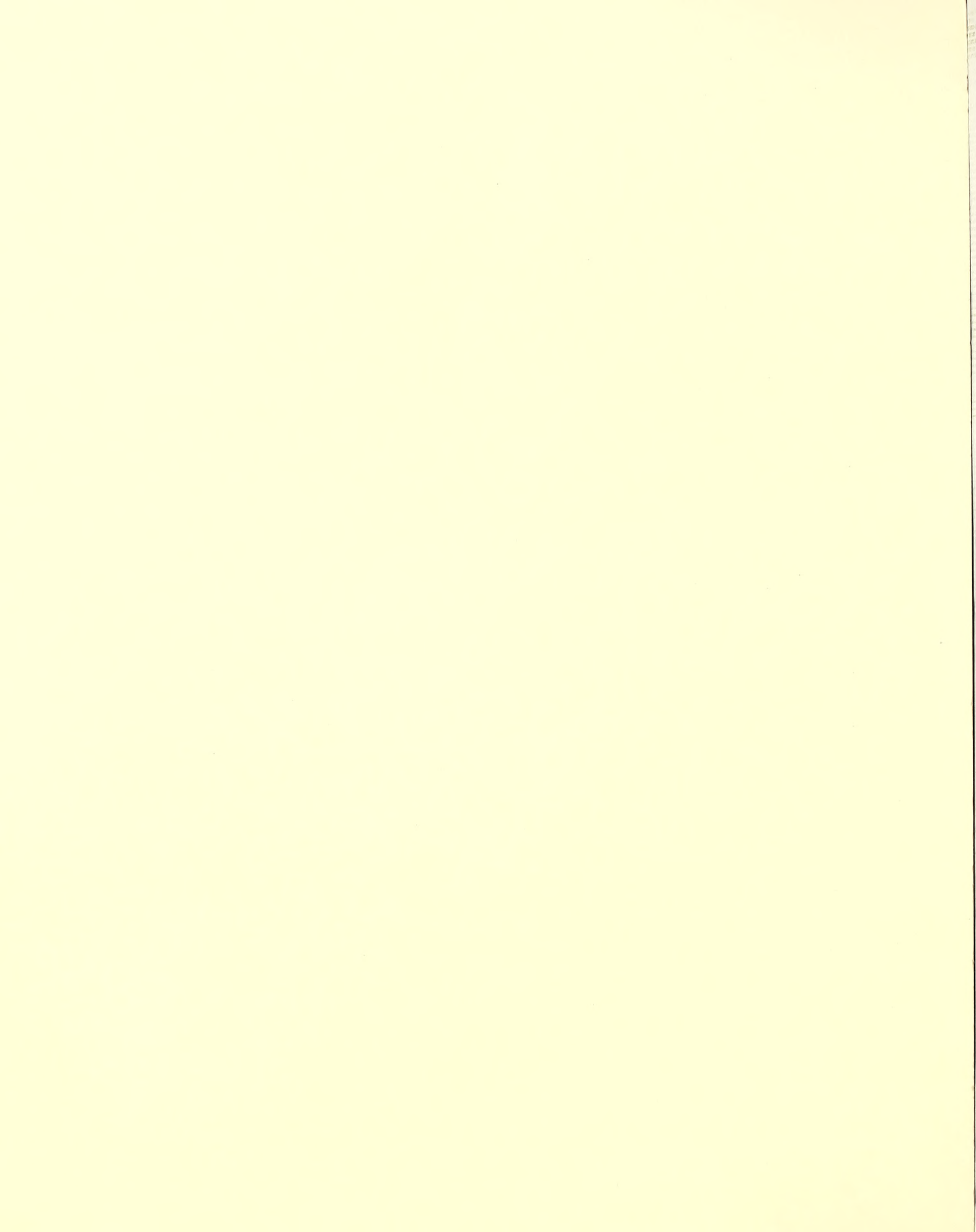


Historic, Archive Document

Do not assume content reflects current scientific knowledge, policies, or practices.



Okanogan National Forest



Travel Plan

Public Notice

Welcome to the Okanogan National Forest, yours to enjoy and use for a variety of purposes. This Travel Plan map has been developed to assist you in accessing your National Forest lands. As you can see, most of the roads shown are open year round to all uses except where closed by weather. Some roads and trails are restricted for part or all of the year.

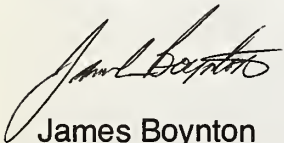
Use of licensed highway vehicles, such as pickups, is prohibited on roads with locked gates or which contain physical barriers such as berms, boulders or root wads.

Many of these Travel Plan decisions were developed during the Forest Planning process and in cooperation with the Colville Confederated Tribes and Washington State Department of Wildlife. Primary reasons for the following are to protect wildlife habitat and provide security. Use of the roads is also restricted to protect soil and water quality, reduce road damage and repair cost, and enhance recreational opportunities.

It is your responsibility to comply with these restrictions and any others you may find in the Forest which may not appear on this map.

Failure to comply with these restrictions and regulations is in violation of the Secretary of Agriculture's Regulations, Title 36 CFR 261.50(B).

Roads and trails are an important tool in National Forest resource management. Please help us manage wisely, and enjoy traveling in your National Forest.



James Boynton
Forest Supervisor
Okanogan and Wenatchee National Forests

U.S. Department of Agriculture
National Agricultural Library

APR 02 2015

Received
Acquisitions and Metadata Branch

April 2005

464232
103P2
3/15
154000-54

Safety Tips

Forest Service Roads

Most National Forest roads are low-standard, one-lane roads with limited turnouts for meeting oncoming traffic. Many roads on the Okanogan N.F. are not graveled. Be aware that the Okanogan N.F. does not maintain or snow plow roads in the winter.

If you choose to drive these roads, plan to encounter rocks and boulders, road washouts, downed trees and brush encroaching on the roadway.

Use a vehicle suitable for rough travel and carry extra equipment such as an axe, shovel, gloves, and extra fuel.

When a sign is posted LOGGING USE ONLY, you should not use the road. These roads have logging activities going on and heavy truck use that is likely to be more hazardous than logging use on other roads without this sign.

When driving on one-lane roads, watch for turnouts and be prepared to stop and wait if you see oncoming traffic. One vehicle should always stop when meeting on a single-lane road. The other should pass slowly.

Drive at a reasonable speed. Your line of sight is often obstructed by trees, brush, hills, or sharp curves, and your vehicle cannot stop as quickly on gravel or dirt surfaces as on paved streets.

Remember:

- Watch for stock trucks going to/coming from trailheads.
- Watch for all kinds of visitors on Forest roads.
- Expect to meet logging trucks even if the road is not signed.
- Don't drive in the dust of other vehicles.
- Drive defensively.
- Watch for livestock.
- Keep to the right.
- Cross Country Skiers, please wear reflective clothing, especially if using a snowmobile route at night.



Temporary Exceptions and Restrictions to Travel Plan Map

Temporary exceptions may be authorized to the restrictions shown on this map to provide access for special firewood gathering opportunities. Information on these exceptions will be available at the Ranger District Office.

Temporary exceptions are authorized to the travel plan restrictions for a Federal, State, or local officer or member of an organized rescue or fire fighting force in the performance of an official duty and any vehicle use which is expressly authorized by the Forest Service under a permit, license, or contract.

Use may be temporarily limited in some areas and on some roads or trails during periods when use would damage resources or would be hazardous. Such temporarily restricted areas, roads or trails are not shown on this map.

Public notice of temporary restrictions will be available at the District Office having jurisdiction. Public notice will also be posted at the restricted area and/or on the restricted road or trail.



TREAD LIGHTLY! ON PUBLIC AND PRIVATE LAND

Tips for Responsible Outdoor Recreation:

Off Highway Vehicle (OHV) and Motorcycle or Mountain Bike Riding

If your Off Highway Vehicle is licensed to operate on public roads or highways, then it can operate on National Forest system roads open to highway vehicles.

If your OHV is not licensed, it may be used **only** on roads that are blocked with rocks, trees or earthen barriers and not open for passenger cars or trucks. Be sure that the blocked road is not shown on the Okanogan National Forest Travel Plan Map as closed to all motorized vehicle use or closed on the ground with a written order.

OHV rules are different on State and Washington Dept. of Fish and Wildlife lands. Please check with the appropriate agency for information about OHV use.

If you have an OHV in a campground, please push or haul it to the blocked roads or areas where you can use it.

Slow down! Ride slowly over challenging terrain and minimize your impact on the ground.

Blasting through streams stirs up the sediment in the stream bottom and can be damaging to fish and their ability to survive. Cross only at established fording points, and check water depth carefully.

When traveling through areas with switchbacks avoid cutting the corners when climbing and/or traveling down hill. Practicing these tread lightly rules will prevent erosion and resource damage and keep maintenance cost down.

Meadows, marshy areas and wetlands deserve special protection. It is best to not go through them at all. Look for trails around the edges where the soil is more firm and dry. Ruts made in meadows leave terrible impression on the landscape and on everyone who sees them.

Remember areas signed as Wilderness are closed to all motorized or mechanized vehicles.

Try to stay in the middle of the trail to avoid widening it.

Even a quiet bike can sound noisy to other trail users - it depends on how it is ridden. Keep your speed and engine rpm low and steady when near campgrounds, or anytime you are around non-riders.

When you meet horses or pack animals, look and listen for any special instructions from the handler. Not all horses and pack animals react the same way around strangers, so slow down and stop on the outside edge of the trail with your engine off or get off of your bike. Never stop in a position which puts you above a horse or pack animal; it can make them feel vulnerable.

Always yield to and be courteous to hikers.

Horseback Riding

Stay on designated trails and roads. Cutting switchbacks and taking shortcuts can destroy vegetation and cause others to use the unauthorized route.

Avoid damage to vegetation when tethering your horse. Do not tie the horses to trees, small limbs, saplings, or shrubs. Use a highline for tethering. Whenever possible, use campsites designated for horses. Camp on durable surfaces and place tents on a non-vegetated area. Camp and hold horses at least 200 feet from water, trails and other camping areas or huts.

Snowmobiling

Be sensitive to the needs of animals. Respect wildlife's privacy. Stop and go around them or wait for them to move. Avoid close contact with wildlife. Minimize noise. Help animals conserve their food supply. Do not chase the animals because they live on a fat reserve stored in the body during the winter.

Avoid damaging brush, trees, and grass. Give plenty of room to pass without breaking off branches or damaging the bark. Little food is available in winter.

Stay on established routes or trails. Show your concern and view birds and animals from a distance.

NOTE: PLEASE respect private property. Recognize that where a Forest Service Road crosses private land, users need to stay on the route, close any gate you open, carry out your litter, and abide by any printed or posted rules.





What Does the Federal Regulation Actually Say?

The closure and restrictions covered under Title 36 Code of Federal Regulations, Part 261, Subpart B are applicable to the described areas, roads and trails during the periods indicated. They are supplemental to those in 36 CFR 261, Subpart A and are promulgated under the authority of Title 16 United States Code 551 and 36 CFR 261.50.

The restrictions shown on this map and in the special closure order are established under Federal laws and regulations. Your cooperation is appreciated.

Title 36 Code of Federal Regulations Part 261, Subpart A

261.1b Penalty.

Any violations of the prohibitions of this part (261) shall be punished by a fine of not more than \$500 or imprisonment for not more than six months or both pursuant to Title 16 U.S. Code, section 551, unless otherwise provided.

261.12 Forest development roads and trails.

The following are prohibited:

- (a) Violating the load, weight, height, length, or width limitations prescribed by State law except by special-use authorization or written agreement or by order issued under 261.54 of this Chapter.
- (b) Failing to have a vehicle weighed at a Forest Service weighing station, if required by a sign.
- (c) Damaging and leaving in a damaged condition any such road, trail, or segment thereof.
- (d) Blocking, restricting, or otherwise interfering with the use of a road, trail, or gate.

261.13 Use of vehicles off roads.

It is prohibited to operate any vehicle off Forest Development, State or County roads:

- (a) Without a valid license as required by State Law.
- (b) Without an operable braking system.
- (c) From one-half hour after sunset to one-half hour before sunrise unless equipped with working head and tail lights.
- (d) In violation of any applicable noise emission standard established by any Federal or State agency.
- (e) While under the influence of alcohol or other drug.
- (f) Creating excessive or unusual smoke.
- (g) Carelessly, recklessly or without regard for the safety of any person, or in a manner that endangers, or is likely to endanger.
- (h) In a manner which damages or unreasonably disturbs the land, wildlife, or vegetative resources.
- (i) In violation of State law established for vehicles used off roads.

Title 36 Code of Federal Regulations Part 261, Subpart B

261.54 Forest development roads.

When provided by an order, the following are prohibited:

- (a) Using any type of vehicle prohibited by the order.
- (b) Use by any type of traffic prohibited by the order.

261.55 Forest development trails.

When provided by an order, issued in accordance with 261.50 of this subpart are prohibited on a forest development trail:

- (b) using any type of vehicle prohibited by the order.
- (c) Use by any type of traffic or mode of transport prohibited by the order.
- (d) Operating a vehicle in violation of the width, weight, length, or other limitations specified by the order.

261.56 Use of vehicle off forest development roads.

When provided by an order, it is prohibited to possess or use a vehicle off forest development roads.

During Forest Fire Season

Washington State fire season is normally **April 15 to October 15**. However, it may be adjusted by public announcement due to fire weather. Publicly announced fire precaution classes apply to all National Forest users.

Please have a shovel and bucket on hand when lighting camp or warming fires in other than designated sites or areas.

During fire season, power saw operators must have an 8-ounce liquid chemical or 1-pound dry chemical fire extinguisher and a shovel in their immediate possession. The saw must also have a screen type spark arrestor installed with maximum screen openings of 0.023 inches.

All motorized vehicles must be equipped with baffle-type mufflers and tail pipes or serviceable Forest Service approved spark arrestors.



Spread the Word... Not the Weeds

What YOU can do:



Noxious Weeds

Spread the word, not the weed.

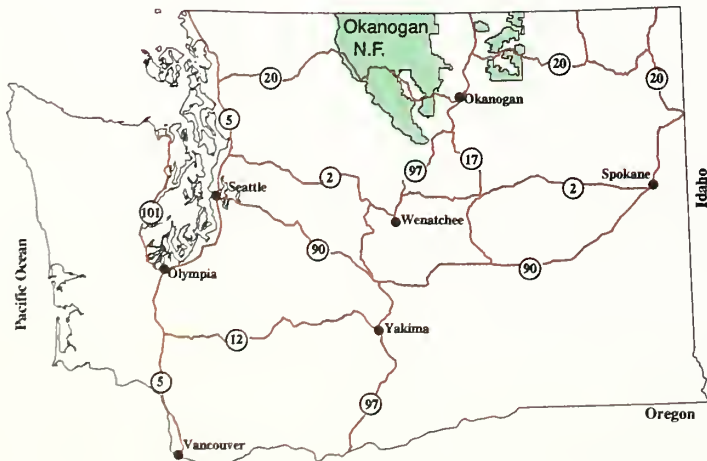
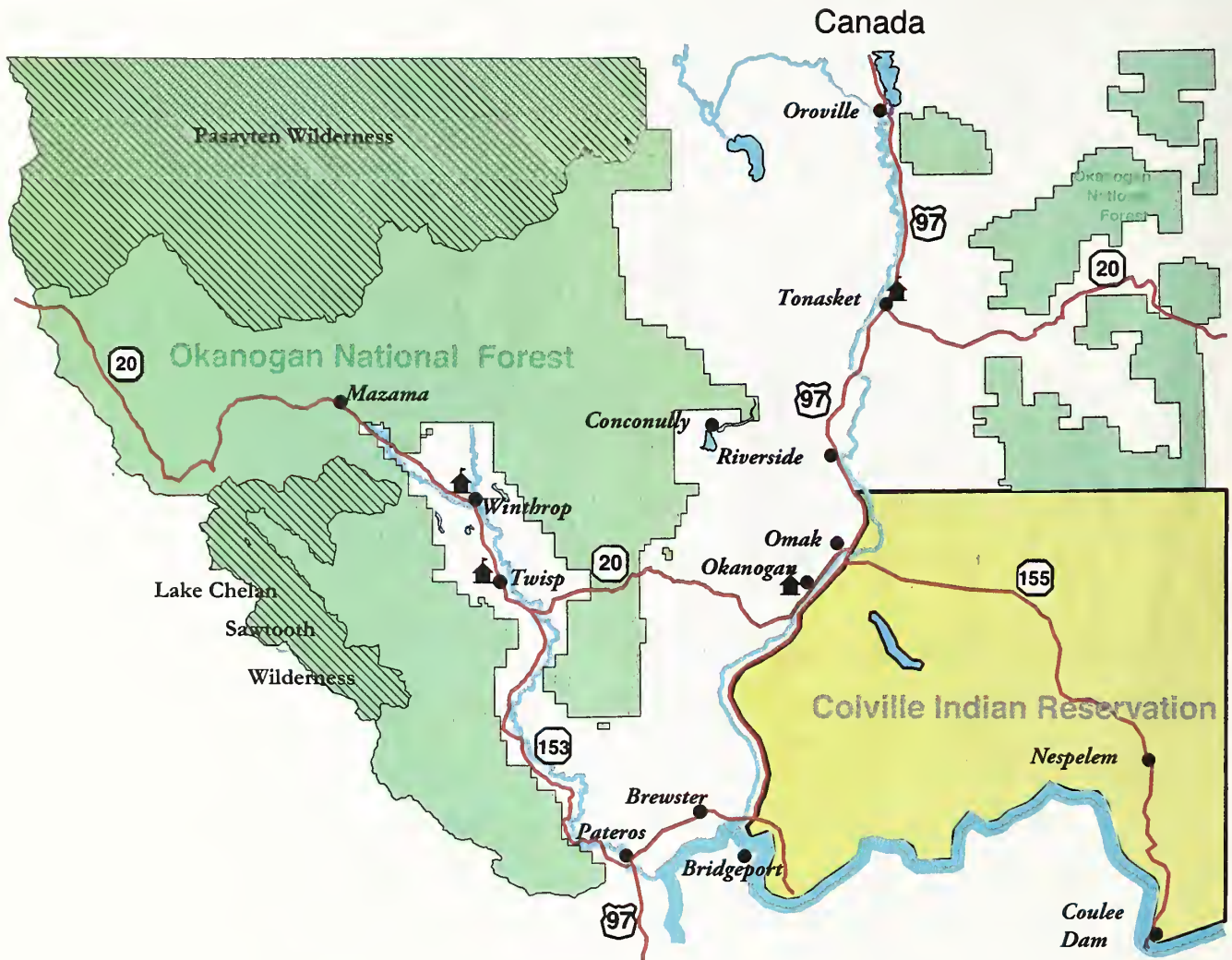
Remove plants hung-up on your vehicle, and avoid infested areas

- Drive only on established roads and trails away from weed infested areas.
- When using pack animals, carry only feed that is certified weed free.
- Within 96 hours before entering back country areas, feed animals only food that is certified weed free.
- Remove weed seeds from animals by brushing them thoroughly and cleaning their hooves before transporting.
- If you find a few weeds without flowers or seeds, pull them and leave them where found. If flowers or seeds are present, place the weeds in a plastic bag or similar container and burn them in a safe place.
- If you find a weed infested area, let the land owner or land managing agency know so that they can take steps to control the weeds.

What YOU shouldn't do:

- Don't pick flowers of noxious weeds and take them home.
- Don't pick and or transport wildflowers that you can't identify.
- Don't camp or drive in weed infested areas.

Vicinity Map



Why Close Roads For Wildlife?

Many SPECIES OF WILDLIFE NEED SECLUSION during certain parts of the year. In WINTER, seclusion helps wildlife CONSERVE THEIR ENERGY so they can survive cold temperatures. Disturbance causes them to burn up important fat reserves. In SUMMER, seclusion provides UNDISTURBED FEEDING so wildlife can build important fat reserves which allows off-spring to grow and develop without stress, and allows them to go into winter in good condition.

ROAD CLOSURES during open hunting seasons provide secure areas where animals may tend to concentrate during migration and allow for higher buck escapement.



How To Use The Travel Plan Map

There is a lot of information available to you through the Travel Plan Map. Please take time to review the individual legends for area closures, and road and trail restrictions. Be familiar with the different symbols and colors used to display this information.

AREA CLOSURES are represented on the map with seven different colored patterns. Within the colored area is also a circle symbol with a letter character shown. Both of these symbols will tie you easily back to the Area Closure Legend. In the legend you will find specific details as to dates when the areas are closed and to what type of user.

SPECIFIC ROAD AND TRAIL RESTRICTIONS are identified by a red line on the piece of road or trail that is closed. Next to the red line will be a small black circle with a number. The numbered circle will tie back to the Road and Trail Restriction legend to identify the specific closure, dates, and affected user.

DESIGNATED OPEN ROUTES are identified by a green line on the piece of road or trail that is open to motorized use through an area closure.

GROOMED SNOWMOBILE ROUTES are identified with a solid blue line. Normally these routes will be groomed when snow conditions permit and are closed to wheeled vehicles.

DESIGNATED SNOWMOBILE ROUTES are identified with a dashed blue line and provide for snowmobile access through an area closure. These routes are not groomed.

How to Get Involved in the Forest Travel Plan

The travel plan will be reviewed biennially. You are, of course, encouraged to comment at any time. Please feel free to visit the Forest Offices to discuss the reasons for closures with us. We value your input.

AREA CLOSURES

The REFERENCE LETTER identifies the area which is closed to travel during the time period shown. Roads within AREA CLOSURES that are open for travel are shown in a solid dark green line on the map; trails are shown in a dashed dark green line. Vehicles may not travel off these roads or trails.

Where off-route travel is prohibited, direct access to temporary campsites within 300 feet of designated routes is permitted. Please select your routes carefully, trying to avoid damage to the land and streams. Do not cut live timber.

A SNOWMOBILE is a track driven ski steered, less than 60 inches overall width. SNOWCAT use requires a permit to operate on groomed snowmobile routes.

HORSES, ATVs, AND BICYCLES are not allowed on groomed snowmobile routes.

Ref. Let.	Motorized Wheeled Vehicles	Snowmobiles	Rationale For Area Closures
A	Yearlong	Yearlong	-Wash. Dept. Fish & Wildlife Lands -Bighorn Sheep, Mtn. Goat Habitat -Ski Area -Research Natural Area
B	Dec. 1 - Mar. 31	Dec. 1 - Mar. 31	-Deer Winter Range -Lynx Habitat
C	Oct. 1 - Dec. 31	Oct. 1 - Dec. 15	-Non-Motorized Hunting Access
D	Oct. 1 - Mar. 31	Oct. 1 - Mar. 31	-Deer Winter Range -Non-Motorized Hunting Access -Cross Country Ski Trails
E	Oct. 1 - Nov. 30	Oct. 1 - Nov. 30	-Non-Motorized Hunting Access
F	Yearlong	No Restrictions	-Non-Motorized Recreation Area
	Yearlong	Yearlong	-Designated Wilderness Area
	No Restrictions	No Restrictions	-No Area Closures

ROAD AND TRAIL RESTRICTIONS

The REFERENCE NUMBER identifies the road or trail which is closed to travel during the time periods shown.

Ref. No.	Motorized Wheeled Vehicles	Snowmobiles
1	Yearlong	Yearlong
2	June 1 - June 30	June 1 - June 30
3	Oct. 1 - Mar. 31	Oct. 1 - Mar. 31
4	Dec. 1 - Mar. 31	Dec. 1 - Mar. 31
5	Yearlong	No Restrictions
6	Oct. 1 - Dec. 31	Oct. 1 - Dec. 15
7	Yearlong	Yearlong
	Note: Includes closed to saddle, pack or draft animals and bicycles.	
8	Oct. 1 - Nov. 30	Oct. 1 - Nov. 30
9	Nov. 15 - Mar. 31	Nov. 15 - Mar. 31
10	N/A	N/A
11	Dec. 1 - April 1	No Restrictions
12	Dec. 1 - April 1	
	Road is closed to motorized wheeled vehicles and not snowmolded. May be open to wheeled traffic and snowmolded by permit only. Please check with the nearest Forest Service Office.	

LEGEND

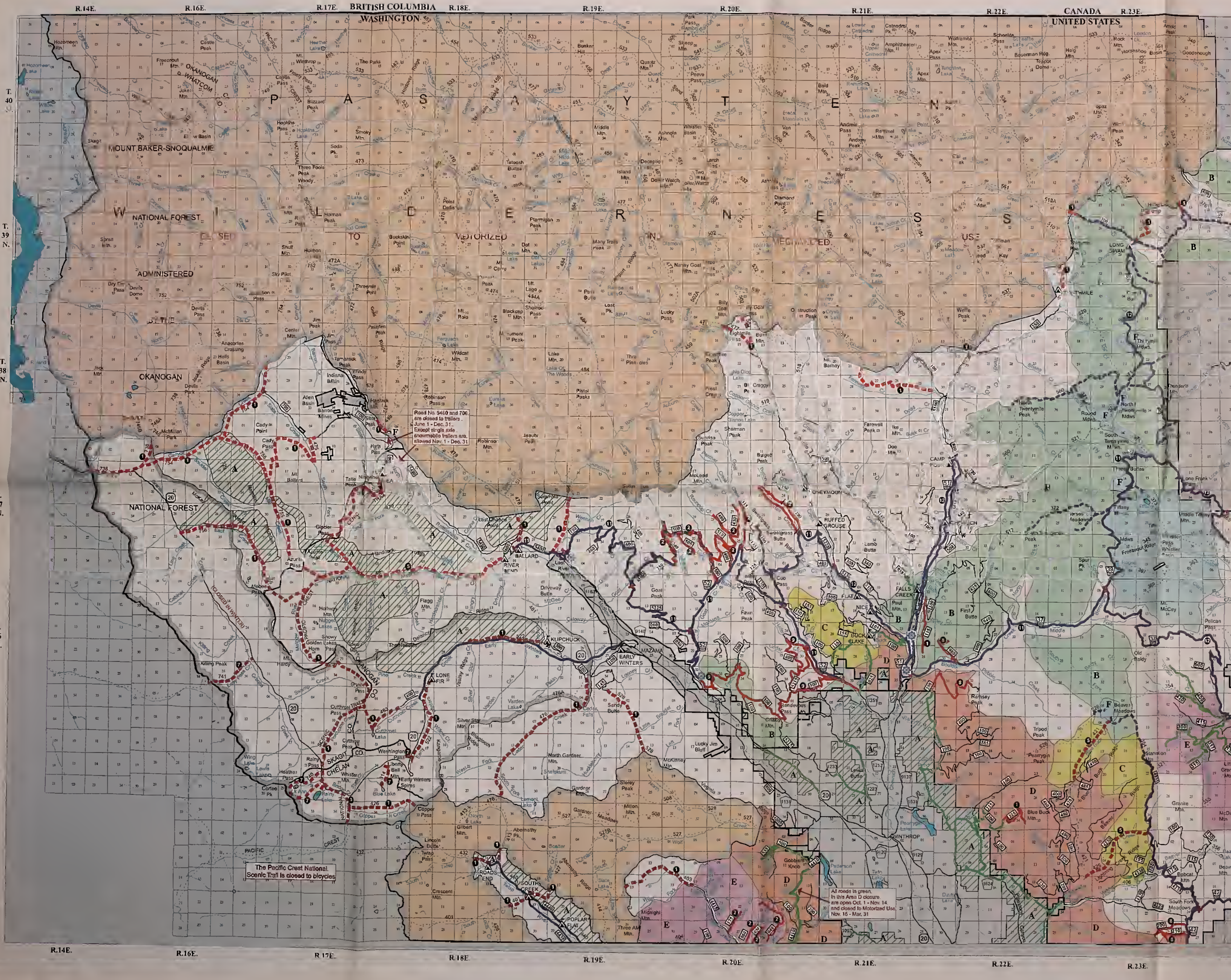
- Land not covered by this plan
- Areas with Restrictions
- Washington State Dept. of Fish and Wildlife Closure Lands
- Trail with restriction
- Road with restriction
- Snowmobile Route with restriction
- Road Restriction and Snowmobile route
- Designated open road
- Designated open trail
- Groomed Snowmobile Routes
- Designated Snowmobile Routes through area closures.
- Washington State Dept. of Wildlife Public Access locations.
- Sno-Park
- Barricaded Road

The Travel Plan applies only to the Okanogan National Forest system lands. Types of restrictions and time periods are listed by REFERENCE LETTER in the AREA CLOSURE chart. Different colors and letters reflect different closures. Lands with area closure by the State of Washington. Type of vehicles and time periods are listed by REFERENCE NUMBER in the ROAD AND TRAIL CLOSURES chart. Types of vehicles and time periods are listed by REFERENCE NUMBER in the ROAD AND TRAIL CLOSURES chart. Types of vehicles and time periods are listed by REFERENCE NUMBER in the ROAD AND TRAIL CLOSURES chart. Road and Trail open to motorized vehicles in an area that otherwise restricted. Routes scheduled for grooming when snow conditions permit or areas designated open to snowmobiles in an area otherwise restricted. Some routes may be closed to serve other resource activities. During winter months, whether groomed or not, use of these routes may be regulated by Special Closure Order. Please contact the nearest Forest Service office for up-to-date information. Not all are colorkeyed; only those which may not be obvious. These are general access areas to the Helmer and Okanogan Rivers. A designated parking area cleared of snow through a joint agreement by the Washington State Parks and Recreation Commission and other agencies. A Sno-Park permit is required. Road blocked with a berm. Available for ATV use if no other restrictions apply.

WASHINGTON WILLAMETTE MERIDIAN
Scale 1/2" = 1 Mile

- National Forest Boundary
- Special Area Boundary
- U.S. Route
- State Route
- County Route
- National Forest Primary Route (Not maintained for automobile use)
- National Forest Secondary Route (Maintained for automobile use)
- Other National Forest Route (Not well maintained for automobile use)
- Forest Service Trail
- National Forest Recreation Site
- Recreation Site, other than National Forest





AREA CLOSURES

The REFERENCE LETTER identifies the area which is closed to travel during the time period shown. Roads within AREA CLOSURES that are open for travel are shown in a solid dark green line on the map; trails are shown in a dashed dark green line. Vehicles may not travel off these roads or trails.

Where off-road travel is prohibited, direct access to temporary campsites within 300 feet of designated roads is permitted. Please select your route carefully, trying to avoid damage to the land and streams. Do not cut live timber.

A SNOWMOBILE is a track driven ski steered, less than 60 inches overall width. SNOWCAT use requires a permit to operate on groomed snowmobile routes.

HORSES, ATVS, AND BICYCLES are not allowed on groomed snowmobile routes.

Ref. Ltr.	Motorized Wheeled Vehicles	Snowmobiles	Rationale For Area Closures
	Yearlong	Yearlong	Wash. Dept. Fish & Wildlife Lands -Bighorn Sheep, Mtn. Goat Habitat -Ski Area -Research Natural Area
B	Dec. 1 - Mar. 31	Dec. 1 - Mar. 31	-Deer Winter Range -Lynx Habitat
C	Oct. 1 - Dec. 31	Oct. 1 - Dec. 15	-Non-Motorized Hunting Access
D	Oct. 1 - Mar. 31	Oct. 1 - Mar. 31	-Deer Winter Range -Non-Motorized Hunting Access -Cross County Ski Trails
E	Oct. 1 - Nov. 30	Oct. 1 - Nov. 30	-Non-Motorized Hunting Access
F	Yearlong	No Restrictions	-Non-Motorized Recreation Area
	Yearlong	Yearlong	-Designated Wilderness Area
	No Restrictions	No Restrictions	-No Area Closures

ROAD AND TRAIL RESTRICTIONS

The REFERENCE NUMBER identifies the road or trail which is closed to travel during the time periods shown.

Ref. No.	Motorized Wheeled Vehicles	Snowmobiles
1	Yearlong	Yearlong
2	June 1 - June 30	June 1 - June 30
3	Oct. 1 - Mar. 31	Oct. 1 - Mar. 31
4	Dec. 1 - Mar. 31	Dec. 1 - Mar. 31
5	Yearlong	No Restrictions
6	Oct. 1 - Dec. 31	Oct. 1 - Dec. 15
7	Yearlong *Note: Includes closed to equestrian, pack or draft animals and bicycles.	Yearlong
8	Oct. 1 - Nov. 30	Oct. 1 - Nov. 30
9	Nov. 15 - Mar. 31	Nov. 15 - Mar. 31
10	N/A	N/A
11	Dec. 1 - April 1	No Restrictions
12	Dec. 1 - April 1	No Restrictions

Road is closed to motorized wheeled vehicles and not snowplowed. May be open to wheeled traffic and snowplowed by permit only. Please check with the nearest Forest Service Office.

LEGEND

- Land not covered by this plan
- Areas with Restrictions
- Washington State Dept. of Fish and Wildlife Closure Lands
- Trail with restriction
- Road with restriction
- Snowmobile Route with restriction
- Road Restriction and Snowmobile Route
- Designated open road
- Designated open trail
- Groomed Snowmobile Routes
- Designated Snowmobile Routes through tree closure
- Washington State Dept. of Wildlife Public Access locations
- Sno-Park
- Barricaded Road

The Travel Plan applies only to the Okanogan National Forest system lands.

Type of restrictions and time periods are listed by REFERENCE LETTER in the AREA CLOSURE chart. Different colors and hatching reflect different closures. Lands with area closures by the State of Washington.

Type of vehicle and time periods are listed by REFERENCE NUMBER in the ROAD AND TRAIL CLOSURE chart.

Type of vehicle and time periods are listed by REFERENCE NUMBER in the ROAD AND TRAIL CLOSURE chart.

Type of vehicle and time periods are listed by REFERENCE NUMBER in the ROAD AND TRAIL CLOSURE chart. Outside of the restricted line frame and when possible, trail route will be groomed for snowmobiling.

Road and trail open to motorized vehicles in an area that is otherwise restricted.

Route scheduled for grooming when snow conditions permit or a route designated open to snowmobiles in an area otherwise restricted. Some routes may be groomed to allow other resource activities. During winter months, whether groomed or not, use of these routes may be regulated by Forest Closure Order. Please contact the nearest Forest Service Office for up-to-date information.

Not all are depicted, only those which may not be obvious. These are general access areas to the Merwin and Okanogan Rivers.

A designated parking area cleared of snow through a joint agreement by the Washington State Parks and Recreation Commission and other agencies. A Sno-Park permit is required.

Road blocked with a berm. Available for ATV use if no other restrictions apply.

WASHINGTON WILLAMETTE MERIDIAN

Scale 1:27 = 1 Mile

1 2 3 4 5 6 Miles

- National Forest Boundary
- Special Area Boundary
- U.S. Route
- State Route
- County Route
- National Forest Primary Route (Well maintained for automobile use)
- National Forest Secondary Route (Maintained for automobile use)
- Other National Forest Route (Not well maintained for automobile use)
- Forest Service Trail
- National Forest Recreation Site
- Recreation Site, other than National Forest

T. 34 N.

T. 35 N.

T. 36 N.

T. 37 N.

T. 38 N.

T. 39 N.

T. 40 N.

T. 34 N.

T. 35 N.

T. 36 N.

T. 37 N.

T. 38 N.

T. 39 N.

T. 40 N.

The Pacific Crest National Scenic Trail is closed to bicycles

AREA CLOSURES
The REFERENCE LETTER identifies the area which is closed to travel during the time period shown. Roads within AREA CLOSURES that are open for travel are shown in a solid dark green line on the map; trails are shown in a dashed dark green line. Vehicles may not travel off these roads or trails.
Where off-route travel is prohibited, direct access to temporary campsites within 300 feet of designated routes is permitted. Please select your routes carefully, trying to avoid damage to the land and streams. Do not cut live timber.
A SNOWMOBILE is a track driven ski steered, less than 50 inches overall width.
SNOWCAT use requires a permit to operate on groomed snowmobile routes.
HORSES, ATVs, AND BICYCLES are not allowed on groomed snowmobile routes.

Ref. Ltr.	Motorized Wheeled Vehicles	Snowmobiles	Rationale For Area Closures
A	Yearlong	Yearlong	-Wash. Dept. Fish & Wildlife Lands -Bighorn Sheep, Mtn. Goat Habitat -Ski Area -Research Natural Area
B	Dec. 1 - Mar. 31	Dec. 1 - Mar. 31	-Deer Winter Range -Lynx Habitat
C	Oct. 1 - Dec. 31	Oct. 1 - Dec. 15	-Non-Motorized Hunting Access
D	Oct. 1 - Mar. 31	Oct. 1 - Mar. 31	-Deer Winter Range -Non-motorized Hunting Access -Cross Country Ski Trails
E	Oct. 1 - Nov. 30	Oct. 1 - Nov. 30	-Non-motorized Hunting Access
F	Yearlong	No Restrictions	-Non-motorized Recreation Area
	Yearlong	Yearlong	-Designated Wilderness Area
	No Restrictions	No Restrictions	-No Area Closures

ROAD AND TRAIL RESTRICTIONS

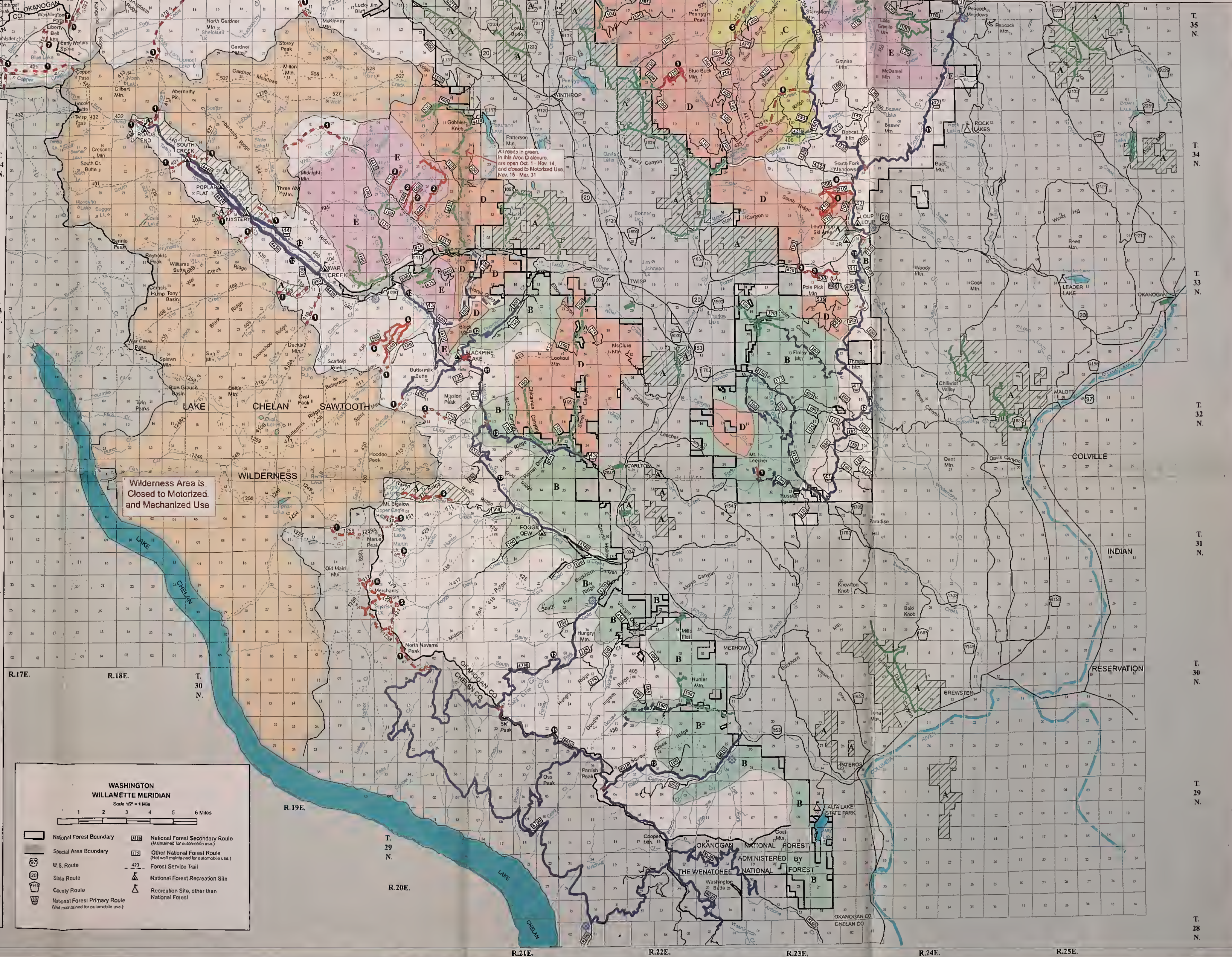
The REFERENCE NUMBER identifies the road or trail which is closed to travel during the time periods shown.

Ref. No.	Motorized Wheeled Vehicles	Snowmobiles
1	Yearlong	Yearlong
2	June 1 - June 30	June 1 - June 30
3	Oct. 1 - Mar. 31	
4	Dec. 1 - Mar. 31	Dec. 1 - Mar. 31
5	Yearlong	No Restrictions
6	Oct. 1 - Dec. 31	Oct. 1 - Dec. 15
7	Note: Includes closed to saddle, pack or draft animals and bicycles.	Yearlong
8	Oct. 1 - Nov. 30	Oct. 1 - Nov. 30
9	Nov. 15 - Mar. 31	Nov. 15 - Mar. 31
10	N/A	N/A
11	Dec. 1 - April 1	No Restrictions
12	Dec. 1 - April 1	

LEGEND

- Land not covered by this plan
- Areas with Restrictions
- Washington State Dept. of Fish and Wildlife Closure Lands
- Trail with restriction
- Road with restriction
- Snowmobile Route with restriction.
- Road Restriction and Snowmobile route
- Designated open road
- Designated open trail
- Groomed Snowmobile Routes
- Designated Snowmobile Routes through area closures.
- Washington State Dept. of Wildlife Public Access locations.
- Sno-Park
- Barricaded Road
- National Forest Boundary
- Special Area Boundary
- U.S. Route
- State Route
- County Route
- National Forest Primary Route (Not maintained for automobile use.)
- National Forest Secondary Route (Maintained for automobile use.)
- Other National Forest Route (Not well maintained for automobile use.)
- Forest Service Trail
- National Forest Recreation Site
- Recreation Site, other than National Forest

WASHINGTON WILLAMETTE MERIDIAN
Scale 1/2" = 1 Mile



Wilderness Area is Closed to Motorized and Mechanized Use

All roads in green in this Area D closure are open Oct. 1 - Nov. 14 and closed to Motorized Use Nov. 15 - Mar. 31

The Travel Plan applies only to the Okanogan National Forest system lands.

Type of restrictions and time periods are listed by REFERENCE LETTER in the AREA CLOSURE chart. Different colors and letters reflect different closures.

Lands with area closure by the State of Washington.

Type of vehicles and time periods are listed by REFERENCE NUMBER in the ROAD and TRAIL CLOSURES chart.

Type of vehicles and time periods are listed by REFERENCE NUMBER in the ROAD and TRAIL CLOSURES chart. Outside of the restricted time frame and when possible this road will be groomed for snowmobiling.

Road and Trail open to motorized vehicles in an area that is otherwise restricted.

Routes scheduled for grooming when snow conditions permit or a route designated open to snowmobiles in an area otherwise restricted. Some routes may be plowed to serve winter resource activities. During winter months, whether groomed or not, use of these routes may be regulated by Special Closure Order. Please contact the nearest Forest Service office for up-to-date information.

Not all are displayed; only those which may not be obvious. These are general access areas to the Methow and Okanogan Rivers.

A designated parking area cleared of snow through a joint agreement by the Washington State Parks and Recreation Commission and other agencies. A Sno-Park permit is required.

Road blocked with a berm. Available for ATV use if no other restrictions apply.

For Information

Okanogan Valley Office

1240 South Second Avenue
Okanogan, WA 98840-9723
(509) 826-3275
TTY (509) 826-3765

Okanogan & Wenatchee N.F.

Forest Supervisor
215 Melody Lane
Wenatchee, WA 98801
(509) 662-4396
TTY (509)-662-4396

Tonasket Ranger District

1 West Winesap
Tonasket, WA 98855
(509) 486-2186
TTY (509) 486-5144

Methow Valley Ranger District

Twisp Office
P.O. Box 188
502 Glover Street
Twisp, WA 98856
(509) 997-2131
TTY (509) 997-9725

Methow Valley Visitor Center

49 Highway 20
P.O. Box 579
Winthrop, WA 98862
(509) 996-4000

Open May through September



The United States Department of Agriculture USDA prohibits discrimination in its programs on the basis of race, color, national origin, sex, religion, age, disability, political beliefs, and marital or familial status. (Not all prohibited bases apply to all programs.) Persons with disabilities who require alternative means of communication of program information (braille, large print, audio-tape, etc.) should contact the USDA's TARGET Center at (202) 720-2600. To file a complaint, write the Secretary of Agriculture, USDA Washington DC 20250, or call 1-800-245-6340 (voice) or (202) 720-1127 (TDD). USDA is an equal employment opportunity employer.

For Hunting and Fishing Information The Washington State Department of Fish & Wildlife

Main Office

600 North Capitol Way
Olympia, WA 98504
(360) 902-2200

Dept. of Wildlife, Region 2

1550 Alder Street N.W.
Ephrata, WA 98823
(509) 754-4624

Poachers Can Turn Quite A Profit..... So Can The People Who Turn Them In

Poaching is a well organized extremely lucrative practice. It is also a crime. A crime that you can stop by calling the Washington Department of Fish and Wildlife and reporting any incident you may have witnessed. Arrests made or citations issued will result in awards being made to the witnesses who have aided with the investigation. Up to \$500.00 can be paid for violations involving moose, antelope, elk, and endangered species; \$250 for deer; and \$100 for gross violations involving small game and fish. You must specify prior to investigation that you desire the reward. You do not need to reveal your name and you do not have to appear in court. Help stop poaching, it pays.

POACHING HOTLINE: 1-800-477-6224 OR 1-800-47POACH

Disabled Hunting opportunities are available on Forest Service land in identified areas. Check with the Wash. State Department of Fish and Wildlife services for details.