

QVA 6207

VOL-31/449

~~1890~~

1-21

Library of the Museum

OF

COMPARATIVE ZOÖLOGY,

AT HARVARD COLLEGE, CAMBRIDGE, MASS.

Founded by private subscription, in 1861.



Deposited by ALEX. AGASSIZ.

No. 4527
May 5 - Dec 15, 1890

New Series, No. CXXI (Vol. XXXI, Part 1).

Price 10s.

7527

APRIL, 1890.

1749

1-21

THE
QUARTERLY JOURNAL
OF
MICROSCOPICAL SCIENCE.

EDITED BY

E. RAY LANKESTER, M.A., LL.D., F.R.S.,

Honorary Fellow of Exeter College, Oxford, and Jodrell Professor of Zoology in University College, London;

WITH THE CO-OPERATION OF

E. KLEIN, M.D., F.R.S.,

Lecturer on General Anatomy and Physiology in the Medical School of St. Bartholomew's Hospital, London,

AND

ADAM SEDGWICK, M.A., F.R.S.,

Fellow and Assistant-Lecturer of Trinity College, Cambridge.

WITH LITHOGRAPHIC PLATES AND ENGRAVINGS ON WOOD.



LONDON:

J. & A. CHURCHILL, 11, NEW BURLINGTON STREET.

MDCCCXC.

CONTENTS OF No. CXXI.—New Series.

MEMOIRS:

	PAGE
On <i>Phymosoma varians</i> . By ARTHUR E. SHIPLEY, M.A., Fellow and Lecturer of Christ's College, Cambridge, and Demonstrator of Comparative Anatomy in the University. (With Plates I, II, III, and IV)	1
The Spinning Apparatus of Geometric Spiders. By CECIL WARBURTON, B.A., Christ's College, Cambridge. (With Plate V)	29
On the Structure and Functions of the Cerata or Dorsal Papillæ in some Nudibranchiate Mollusca. By W. A. HERDMAN, D.Sc., F.L.S., Professor of Natural History in University College, Liverpool. (With Plates VI, VII, VIII, IX, and X)	41
Further Observations on the Histology of Striped Muscle. By C. F. MARSHALL, M.B., M.Sc., late Platt Physiology Scholar in the Owens College. (With Plate XI)	65
On <i>Chætobranchus</i> , a New Genus of Oligochætous Chætopoda. By ALFRED GIBBS BOURNE, D.Sc.Lond., F.L.S., C.M.Z.S., Fellow of University College, London, and of the Madras University. (With Plate XII)	83
The Presence of Ranvier's Constrictions in the Spinal Cord of Vertebrates. By Dr. WILLIAM TOWNSEND PORTER, of St. Louis. (With Plate XII <i>bis</i>)	91
PROFESSOR BÜTSCHLI's Experimental Imitation of Protoplasmic Movement	99

New Series, No. CXXII (Vol. XXXI, Part 2).

Price 10s.

JUNE, 1890.

AUG 25 1890

7527.

THE
QUARTERLY JOURNAL
OF
MICROSCOPICAL SCIENCE.

EDITED BY

E. RAY LANKESTER, M.A., LL.D., F.R.S.,

*Honorary Fellow of Exeter College, Oxford, and Jodrell Professor of Zoology in University College,
London;*

WITH THE CO-OPERATION OF

E. KLEIN, M.D., F.R.S.,

*Lecturer on General Anatomy and Physiology in the Medical School of St. Bartholomew's Hospital,
London,*

AND

ADAM SEDGWICK, M.A., F.R.S.,

Fellow and Assistant-Lecturer of Trinity College, Cambridge.

WITH LITHOGRAPHIC PLATES AND ENGRAVINGS ON WOOD.



LONDON:

J. & A. CHURCHILL, 11, NEW BURLINGTON STREET.

MDCCCXC.

CONTENTS OF No. CXXII.—New Series.

MEMOIRS:

	PAGE
The Embryology of a Scorpion (<i>Euscorpium italicus</i>). By MALCOLM LAURIE, B.Sc., Falconer Fellow of Edinburgh University. (With Plates XIII—XVIII)	105
On the Morphology of the Compound Eyes of Arthropods. By S. WATASE, Fellow of the Johns Hopkins University. (With Plate XIX)	143
On the Structure of a Species of Earthworm belonging to the Genus <i>Diachæta</i> . By FRANK E. BEDDARD, M.A., Prosector to the Zoological Society of London. (With Plate XX)	159
<i>Hekaterobrancheus Shrubsolei</i> , a New Genus and Species of the Family Spionidæ. By FLORENCE BUCHANAN, Student of University College. (With Plates XXI and XXII)	175
An Attempt to Classify Earthworms. By W. B. BENHAM, D.Sc., Assistant to the Jodrell Professor of Zoology, in University College, London	201

3
New Series, No. CXXIII (Vol. XLII, Part 3).

Price 10s.

7527.

AUGUST, 1890.

THE
QUARTERLY JOURNAL
OF
MICROSCOPICAL SCIENCE.

EDITED BY

E. RAY LANKESTER, M.A., LL.D., F.R.S.,

*Honorary Fellow of Exeter College, Oxford; Jodrell Professor of Zoology in University College, London;
and Deputy Linacre Professor of Human and Comparative Anatomy in the University of Oxford.*

WITH THE CO-OPERATION OF

E. KLEIN, M.D., F.R.S.,

*Lecturer on General Anatomy and Physiology in the Medical School of St. Bartholomew's Hospital,
London,*

AND

ADAM SEDGWICK, M.A., F.R.S.,

Fellow and Assistant-Lecturer of Trinity College, Cambridge.

WITH LITHOGRAPHIC PLATES AND ENGRAVINGS ON WOOD.



LONDON:

J. & A. CHURCHILL, 11, NEW BURLINGTON STREET.

MDCCCXC.

CONTENTS OF No. CXXIII.—New Series.

MEMOIRS:

	PAGE
On the Origin of Vertebrates from Arachnids. By WILLIAM PATTEN, Ph.D., Professor of Biology in the University of North Dakota, Grand Forks. (With Plates XXIII and XXIV)	317
On the Origin of Vertebrates from a Crustacean-like Ancestor. By W. H. GASKELL, M.D., F.R.S. (With Plates XXV, XXVI, XXVII, XXVIII)	379
The Development of the Atrial Chamber of Amphioxus. By E. RAY LANKESTER, M.A., LL.D., F.R.S., and ARTHUR WILLEY, Student of University College. (With Plates XXIX, XXX, XXXI, XXXII)	445

New Series, No. CXXIV (Vol. XXXI, Part 4).

Price 10s.

7527

NOVEMBER, 1890.

THE
QUARTERLY JOURNAL
OF
MICROSCOPICAL SCIENCE.

EDITED BY

E. RAY LANKESTER, M.A., LL.D., F.R.S.,

*Honorary Fellow of Exeter College, Oxford; Jodrell Professor of Zoology in University College, London;
and Deputy Linacre Professor of Human and Comparative Anatomy in the University of Oxford.*

WITH THE CO-OPERATION OF

E. KLEIN, M.D., F.R.S.,

*Lecturer on General Anatomy and Physiology in the Medical School of St. Bartholomew's Hospital,
London,*

AND

ADAM SEDGWICK, M.A., F.R.S.,

Fellow and Assistant-Lecturer of Trinity College, Cambridge.

WITH LITHOGRAPHIC PLATES AND ENGRAVINGS ON WOOD.



LONDON:

J. & A. CHURCHILL, 11, NEW BURLINGTON STREET.

MDCCCXC.

CONTENTS OF No. CXXIV.—New Series.

MEMOIRS:

	PAGE
On the Structure of a New Genus of Oligochæta (<i>Deodrilus</i>), and on the Presence of Anal Nephridia in <i>Acanthodrilus</i> . By FRANK E. BEDDARD, M.A., Prosector of the Zoological Society of London. (With Plates XXXIII and XXXIIIA)	467
Excretory Tubules in <i>Amphioxus lanceolatus</i> . By F. ERNEST WEISS, B.Sc., F.L.S., University College, London. (With Plates XXXIV and XXXV)	489
Studies in Mammalian Embryology. II.—The Development of the Germinal Layers of <i>Sorex vulgaris</i> . By A. A. W. HUBRECHT, LL.D., C.M.Z.S., Professor of Zoology in the University of Utrecht. (With Plates XXXVI—XLII)	499
Terminations of Nerves in the Nuclei of the Epithelial Cells of Tortoise-shell. By JOHN BERRY HAYCRAFT, M.D., D.Sc. (from the Physiological Laboratory of the University of Edinburgh). (With Plate XLIII)	563



Fig. 4

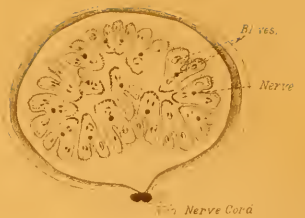


Fig. 5



Fig. 6



Fig. 8



Fig. 9



Fig. 10



Fig. 11



Fig. 12



Fig. 13



Fig. 14



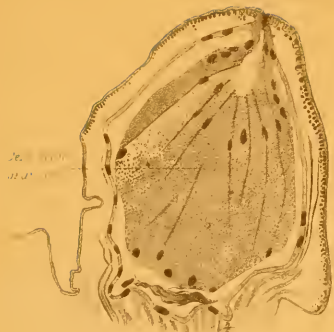


Fig. 14



Fig. 15



Fig. 16

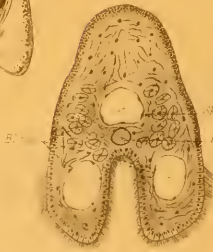


Fig. 17



Fig. 18



Fig. 19

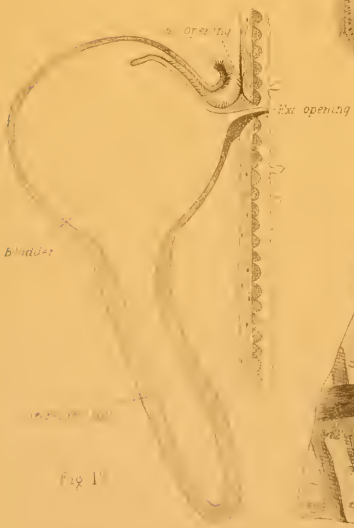


Fig. 19

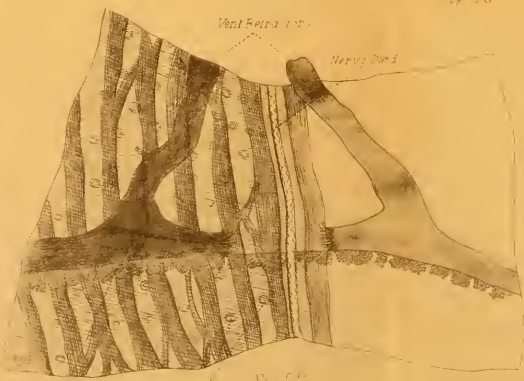


Fig. 20



Fig. 21

Handular cells
Pericardial cells
Muscle

Fortissima hook

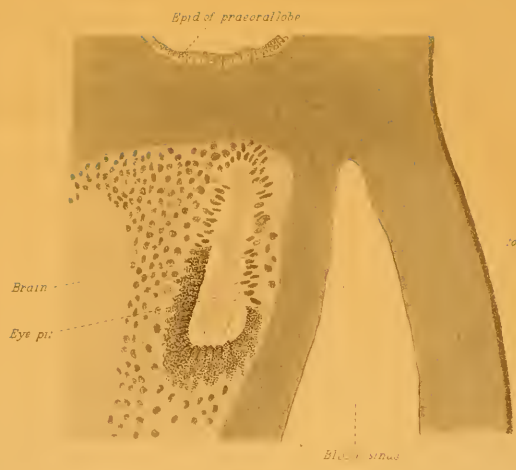


Fig. 23

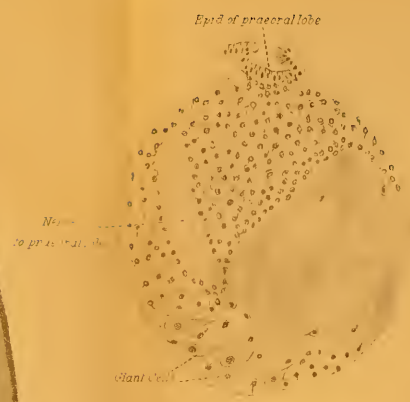


Fig. 25

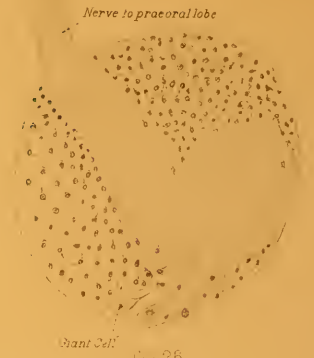


Fig. 26



Fig. 24

Ganglion cells

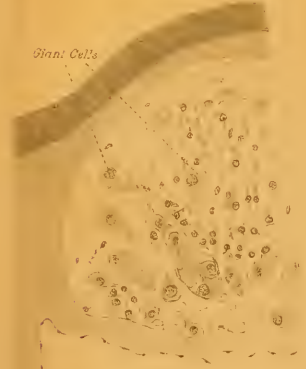


Fig. 27



Fig. 30



Fig. 28

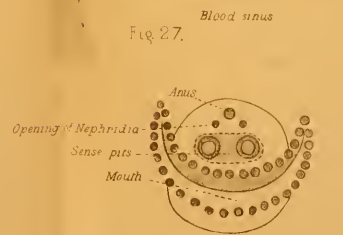


Fig. 31

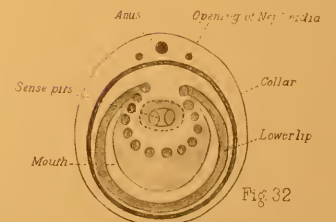


Fig. 32

Fig. 29

Fig. 1.



Fig. 2.



Fig. 3.



Fig. 4.



Fig. 5.



Fig. 6.



Fig. 7.



Fig. 8.

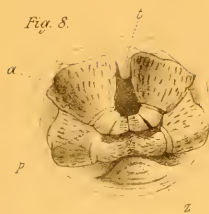


Fig. 9.



Fig. 10.



Fig. 11.



Fig. 12.

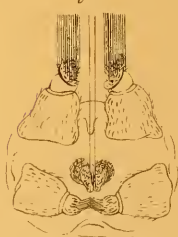


Fig. 13.



Fig. 14.



Fig. 15.



Fig. 17.



Fig. 16.



Fig. 18.

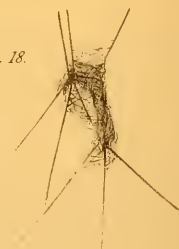


Fig. 19.



Fig. 20.



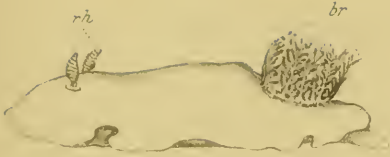


Fig. 1.

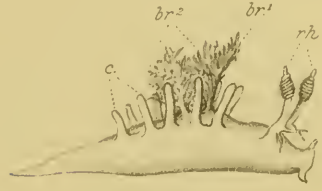


Fig. 3.

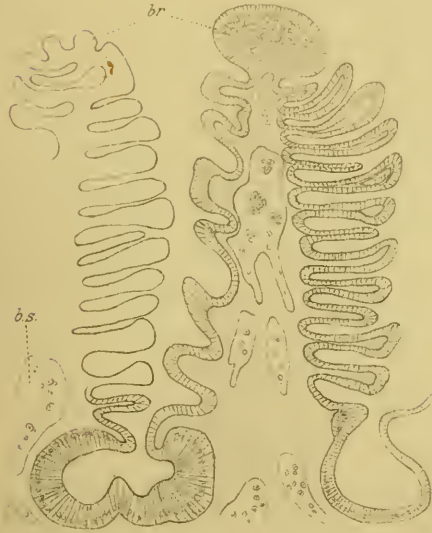


Fig. 2.



Fig. 4.



Fig. 5.

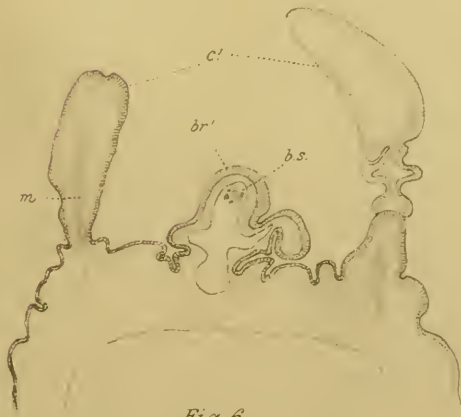


Fig. 6.



Fig. 7.

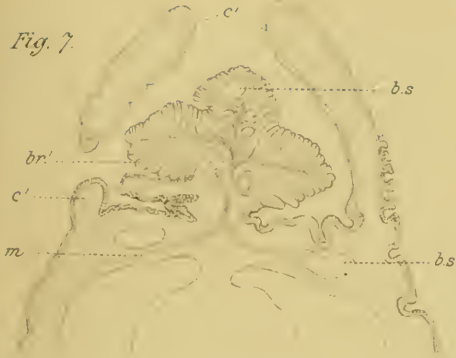


Fig. 9.



Fig. 8.

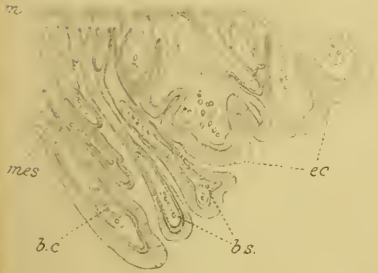


Fig. 10.

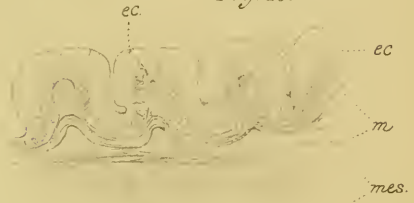


Fig. 13.



Fig. 11.

Fig. 14.

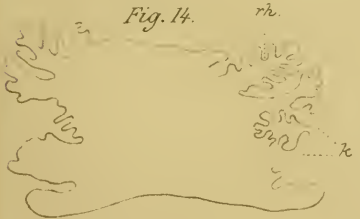


Fig. 15.

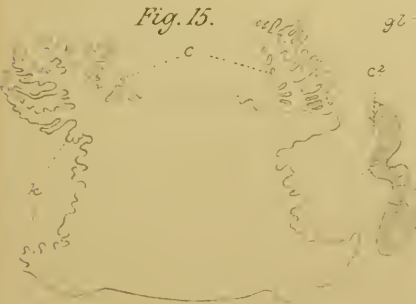


Fig. 12.







Fig. 16.



Fig. 17

Fig. 18.

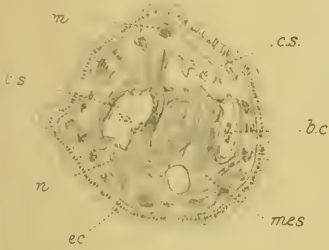


Fig. 19.

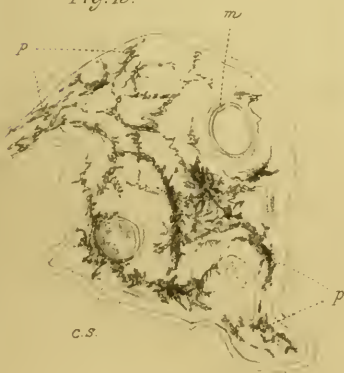


Fig. 20.

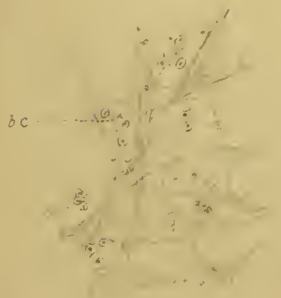


Fig. 21.



Fig. 23.



Fig. 22.



Fig. 24

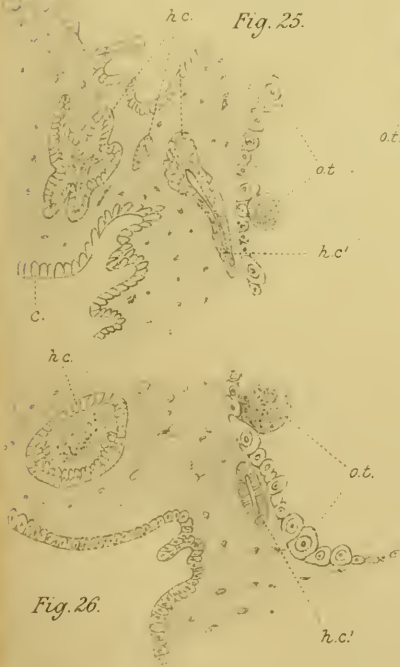


Fig. 25.



Fig. 26.



Fig. 27.

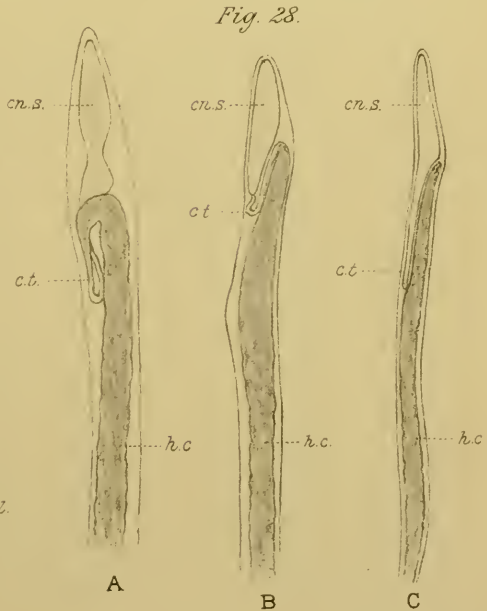


Fig. 28.

A

B

C

Fig. 29.

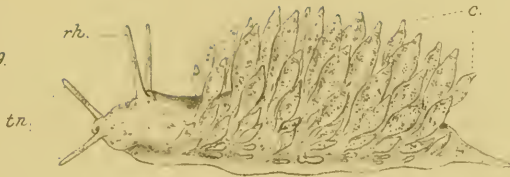


Fig. 30.



Fig. 32.

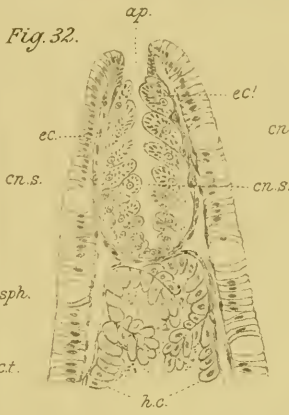


Fig. 31.

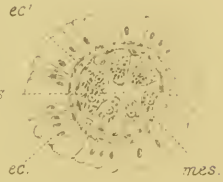


Fig. 33.

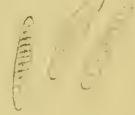


Fig. 40.

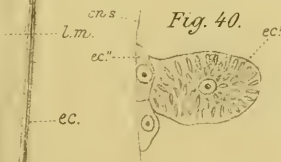


Fig. 34.

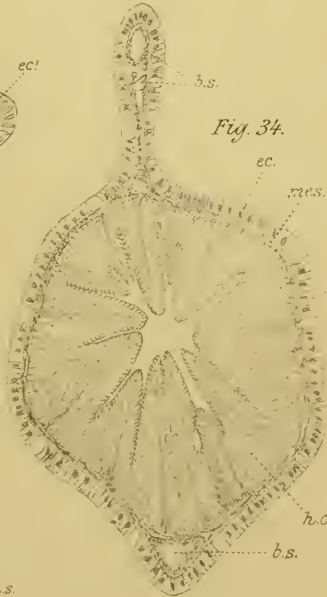


Fig. 38.



Fig. 39.



Fig. 36.



Fig. 37.



Fig. 35.



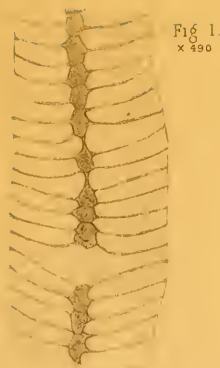


Fig. 1.
x 490

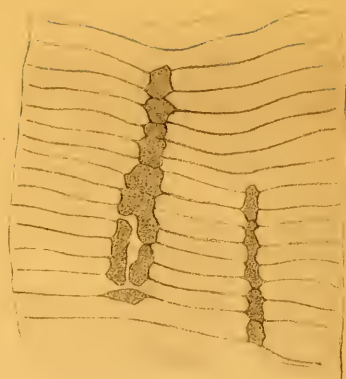


Fig. 2.
x 1090

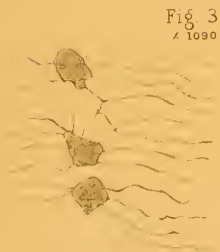


Fig. 3.
x 1090

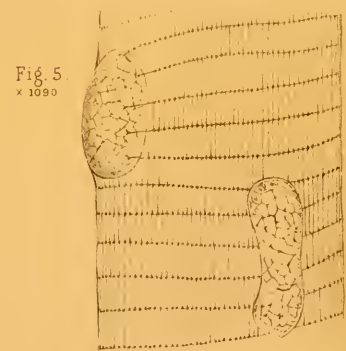


Fig. 5.
x 1090



Fig. 6.
x 1090

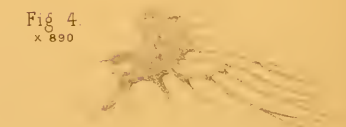


Fig. 4.
x 890

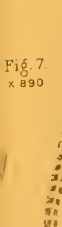


Fig. 7.
x 890



Fig. 8.
x 890

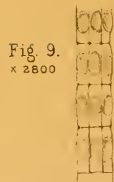


Fig. 9.
x 2800



Fig. 10.
x 890



Fig. 11.
x 1090

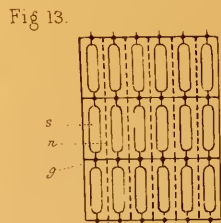


Fig. 13.

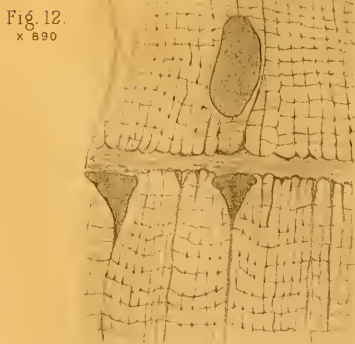


Fig. 12.
x 890

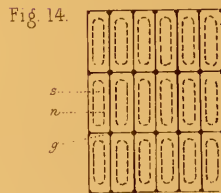


Fig. 14.



Fig. 15.

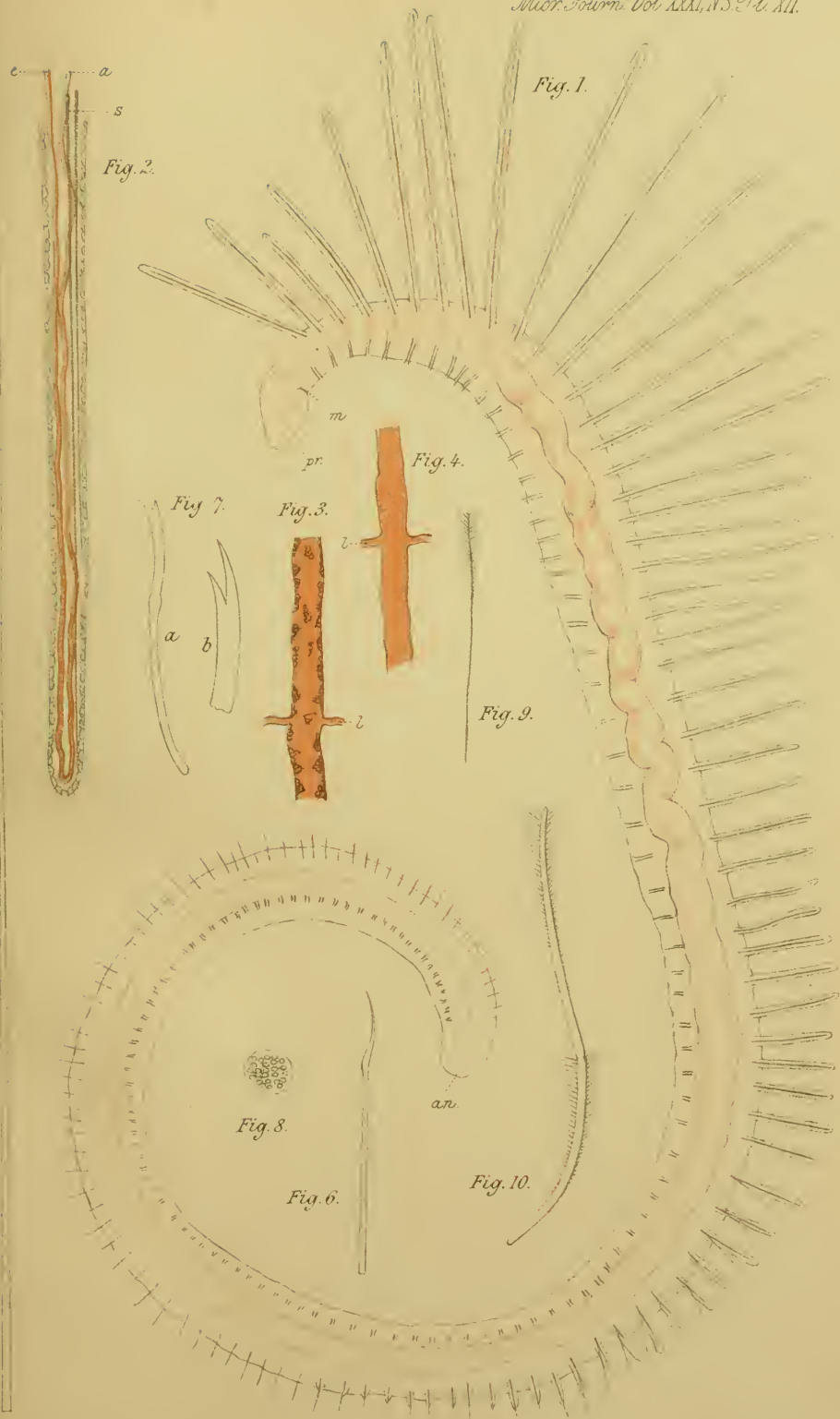




Fig. 1.

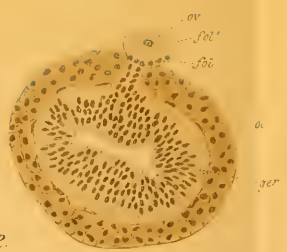


Fig. 2.



Fig. 6.



Fig. 3.



Fig. 4.



Fig. 5.

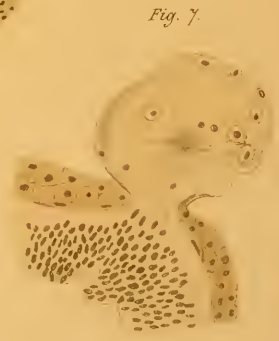


Fig. 7.

Fig. 9.

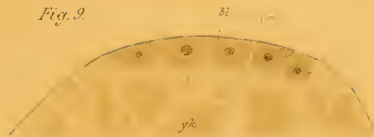


Fig. 10.

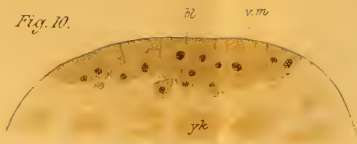


Fig. 11.

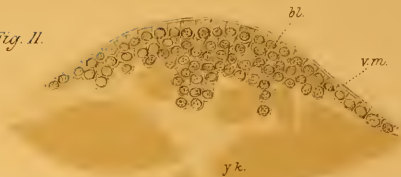


Fig. 13.



Fig. 8.



Fig. 16.

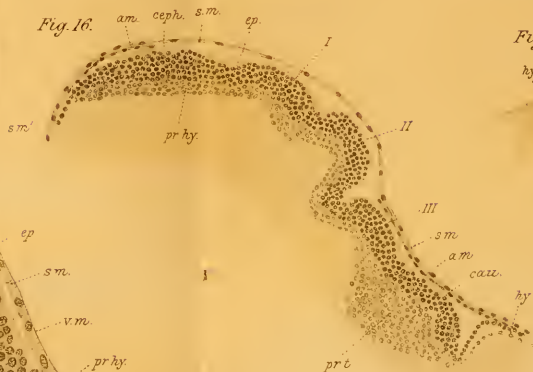


Fig. 18.



Fig. 12.

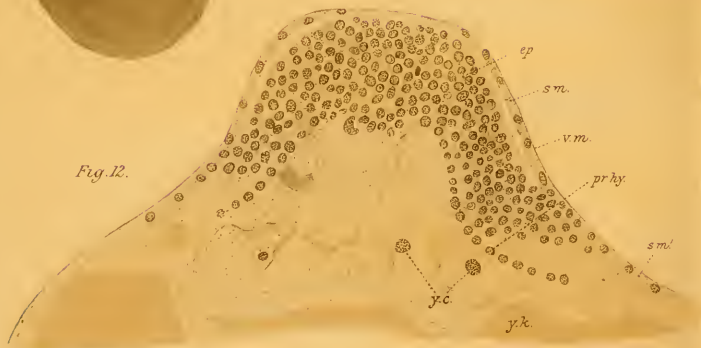


Fig. 19.

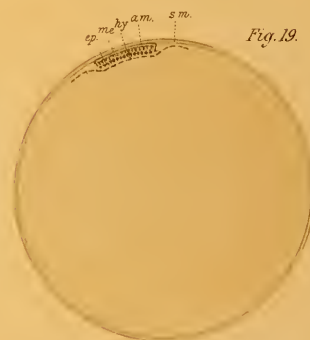


Fig. 17.

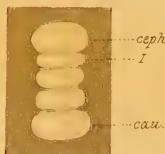


Fig. 14.

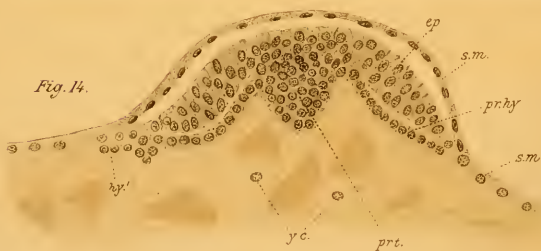


Fig. 15.

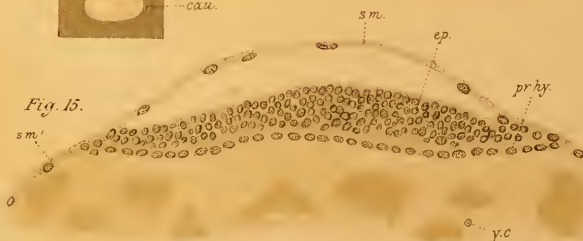


Fig. 21.

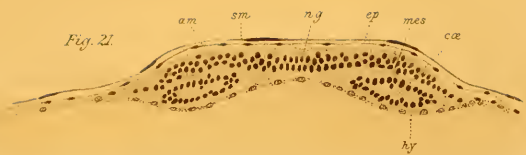


Fig. 23.

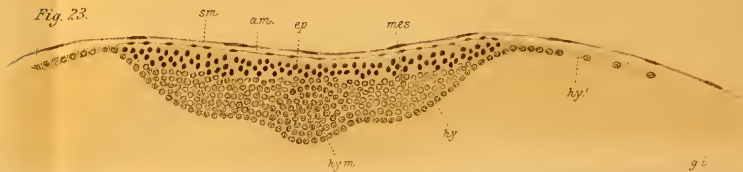


Fig. 20.

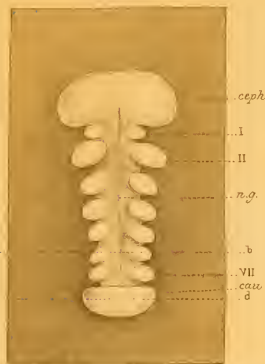


Fig. 22.



Fig. 24.

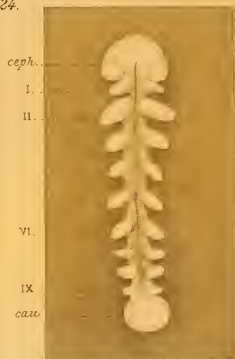


Fig. 28.

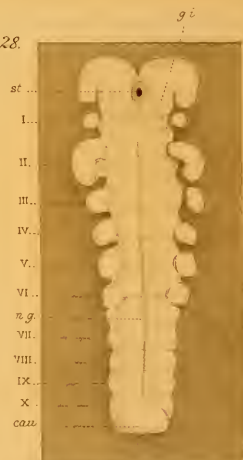


Fig. 25.

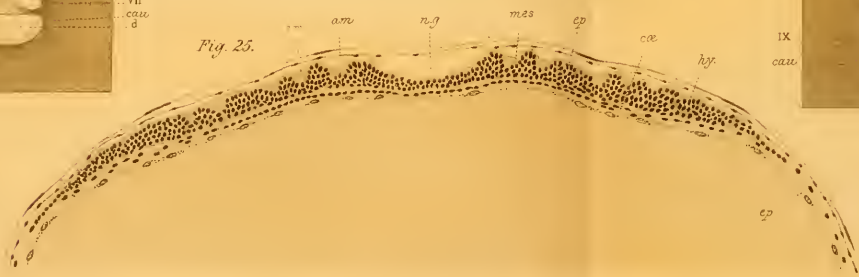
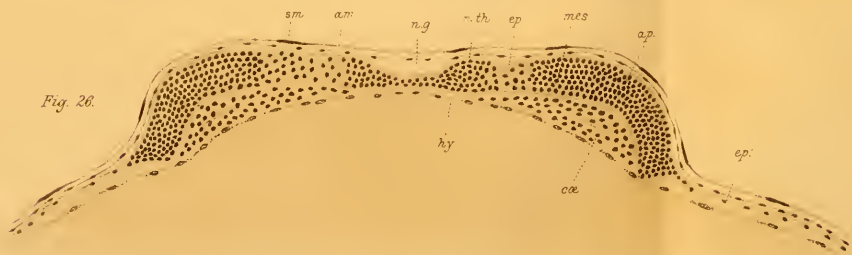
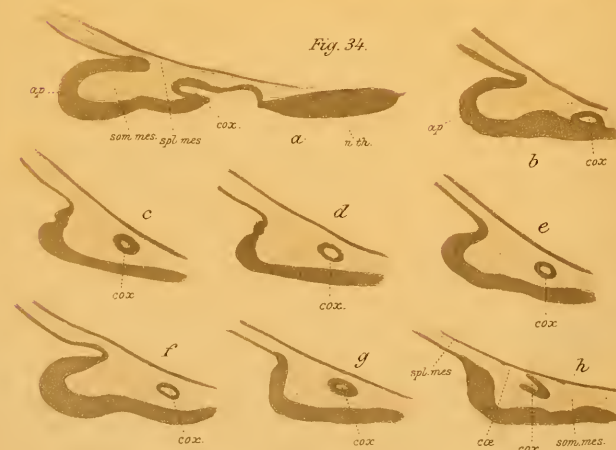
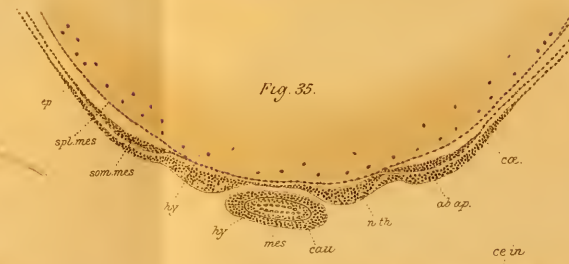
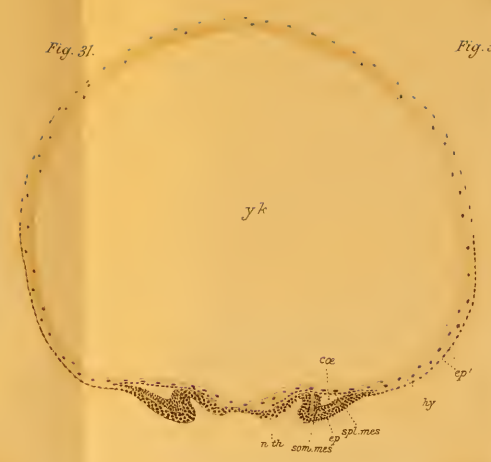
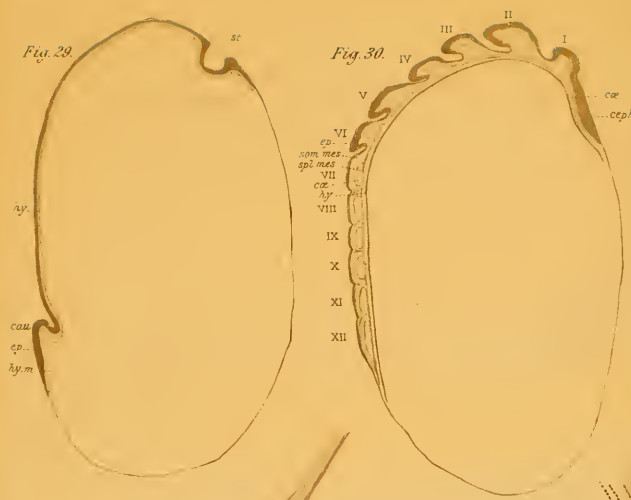


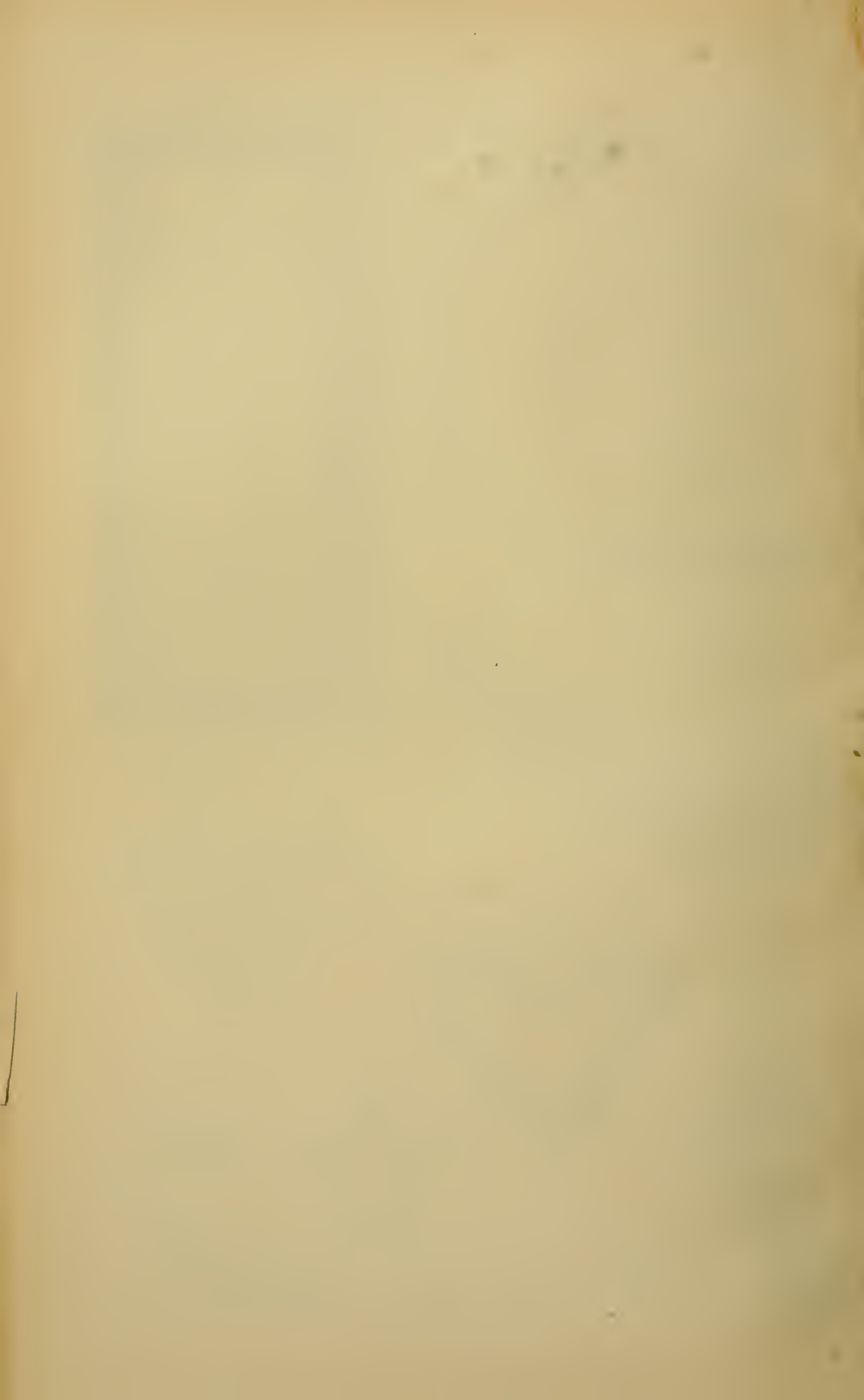
Fig. 27.



Fig. 26.







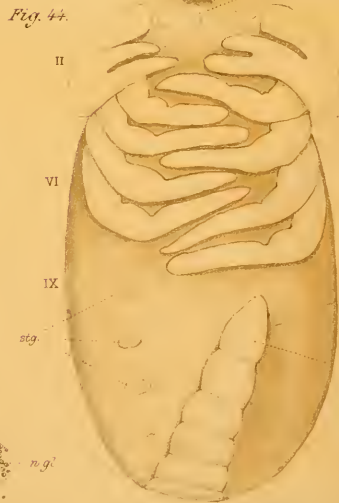
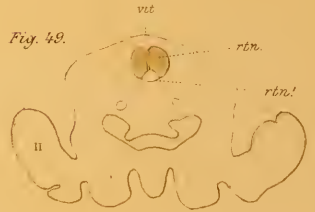
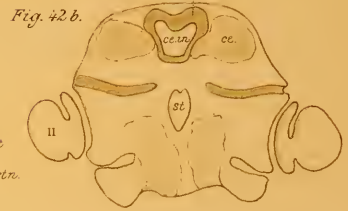
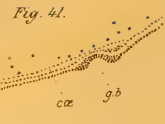
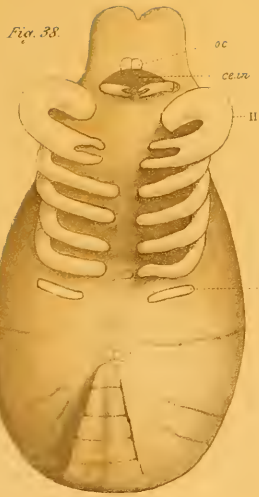
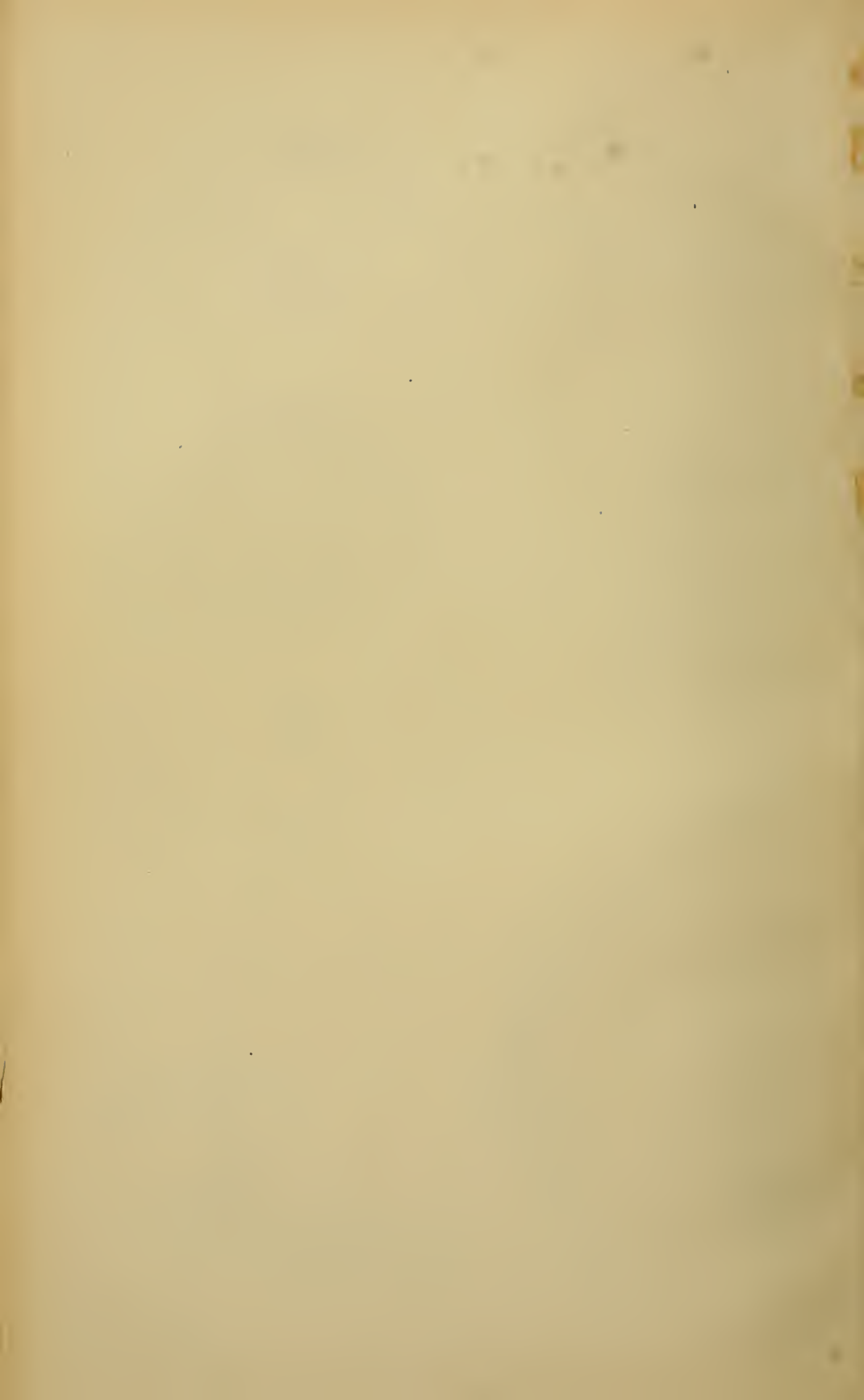


Fig. 50.





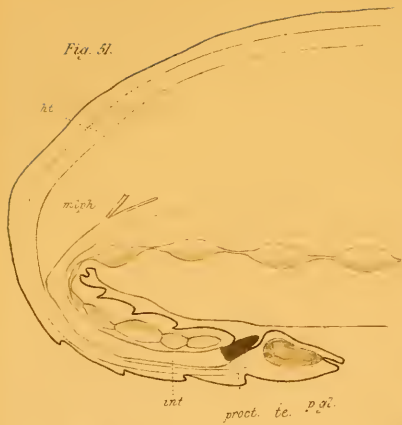


Fig. 51.

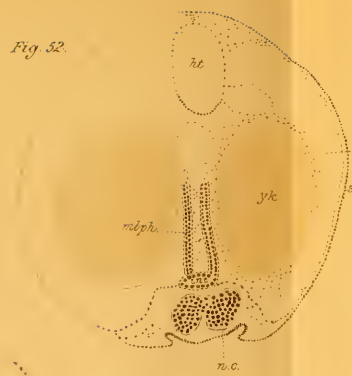


Fig. 52.



Fig. 53.



Fig. 59.



Fig. 61.

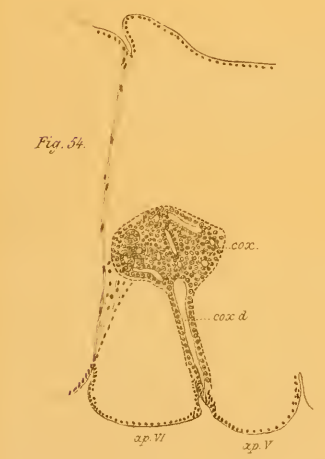


Fig. 54.

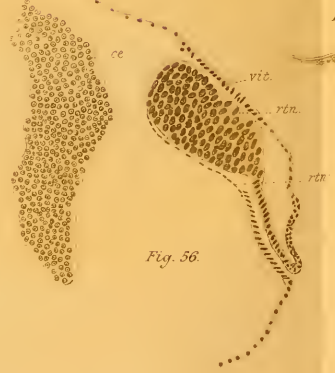


Fig. 56.



Fig. 57.



Fig. 55.

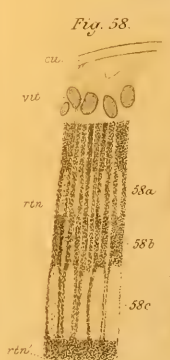


Fig. 58.

Fig. 58c

Fig. 58b

Fig. 58a

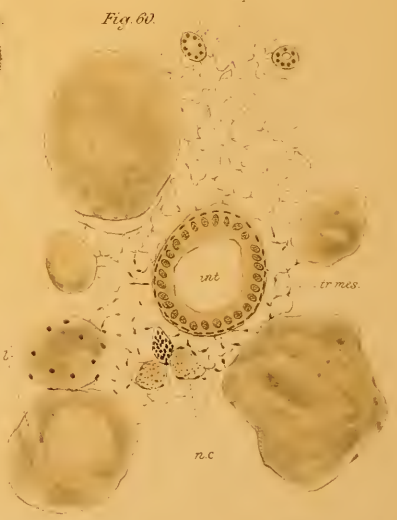
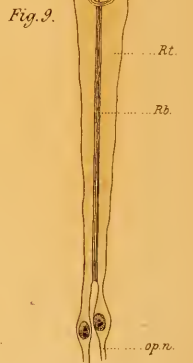
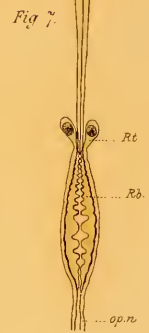
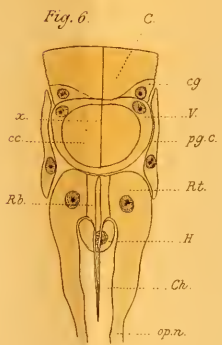
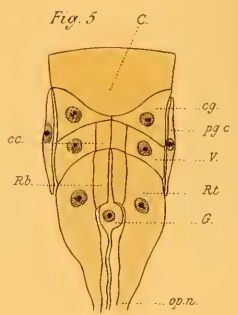
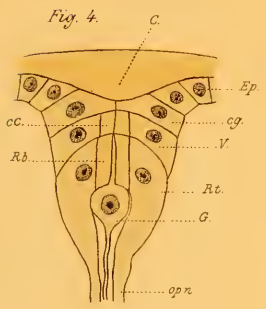
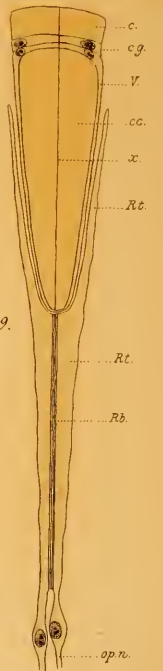
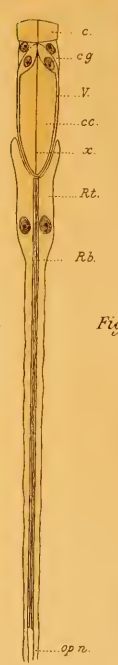
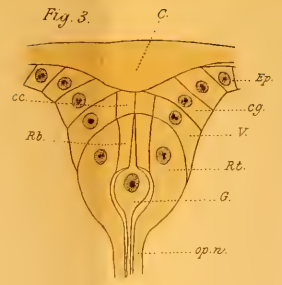
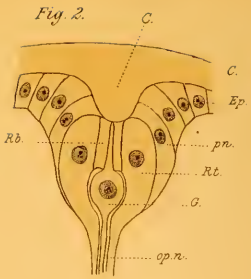
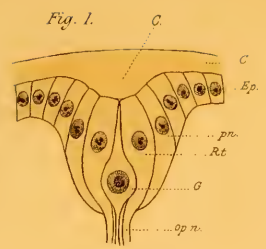
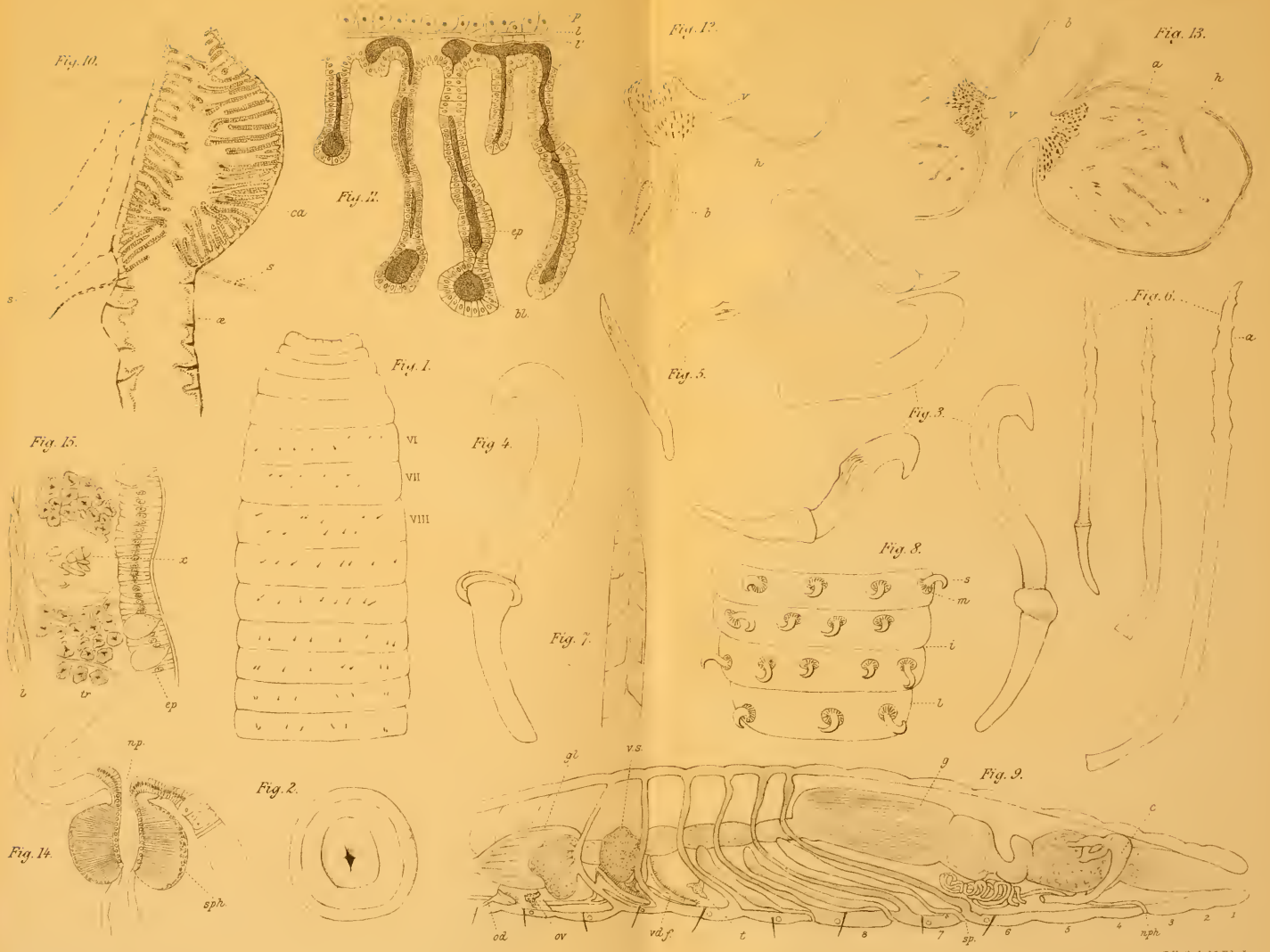


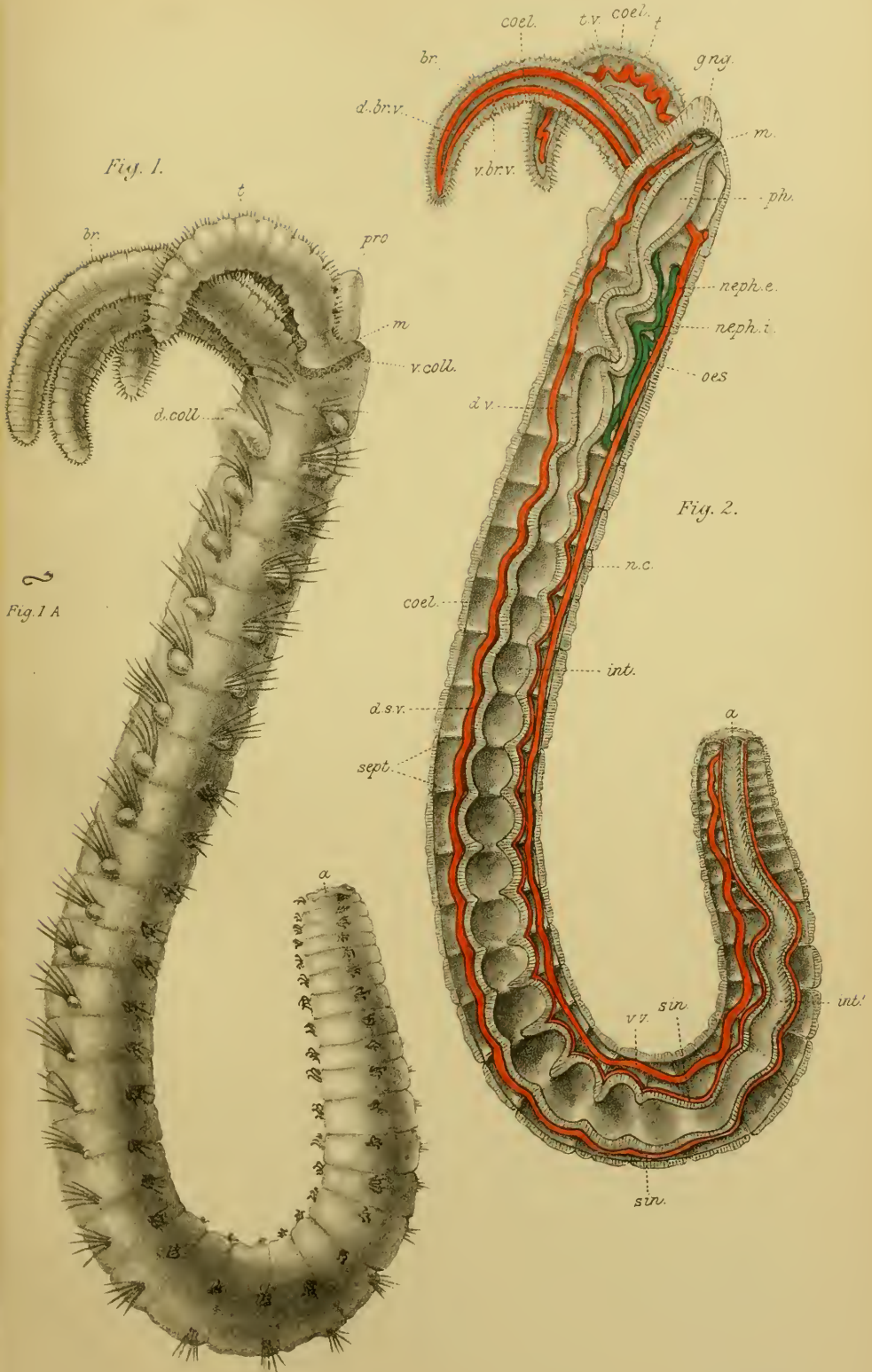
Fig. 60





ORIGIN OF THE COMPOUND EYE OF ARTHROPODS.





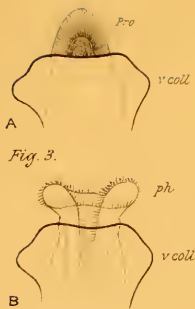


Fig. 3.

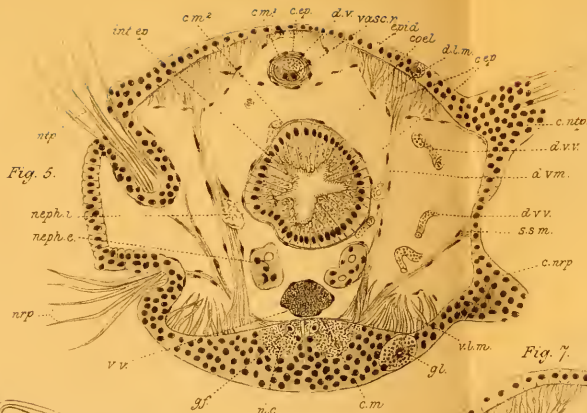


Fig. 5.

Fig. 6.

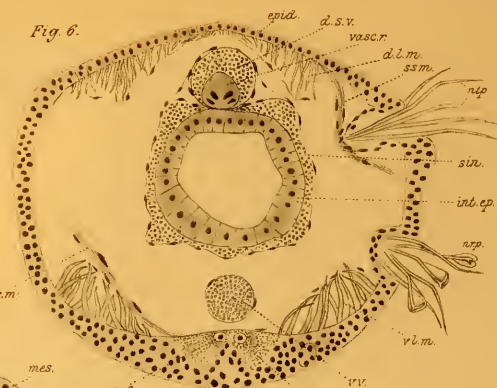


Fig. 4.



C.

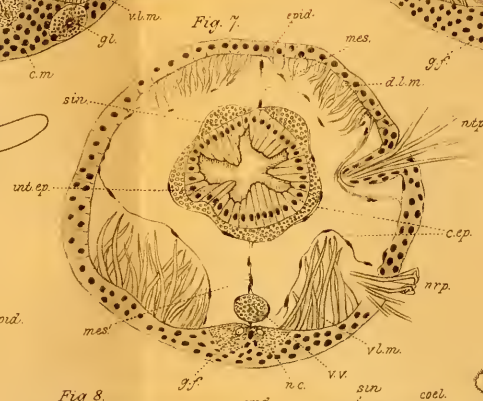


Fig. 7.

Fig. 13.

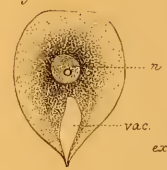
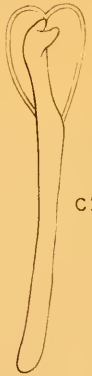


Fig. 14.



B.

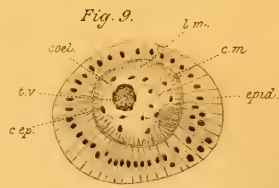
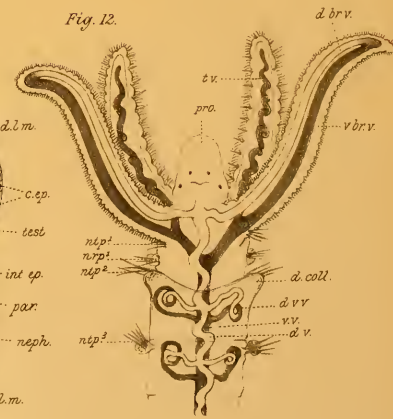


Fig. 9.



Fig. 8.

Fig. 12.



C!

Fig. 10.

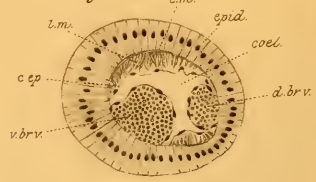


Fig. 11.



Fig. 1

m



Fig. 2

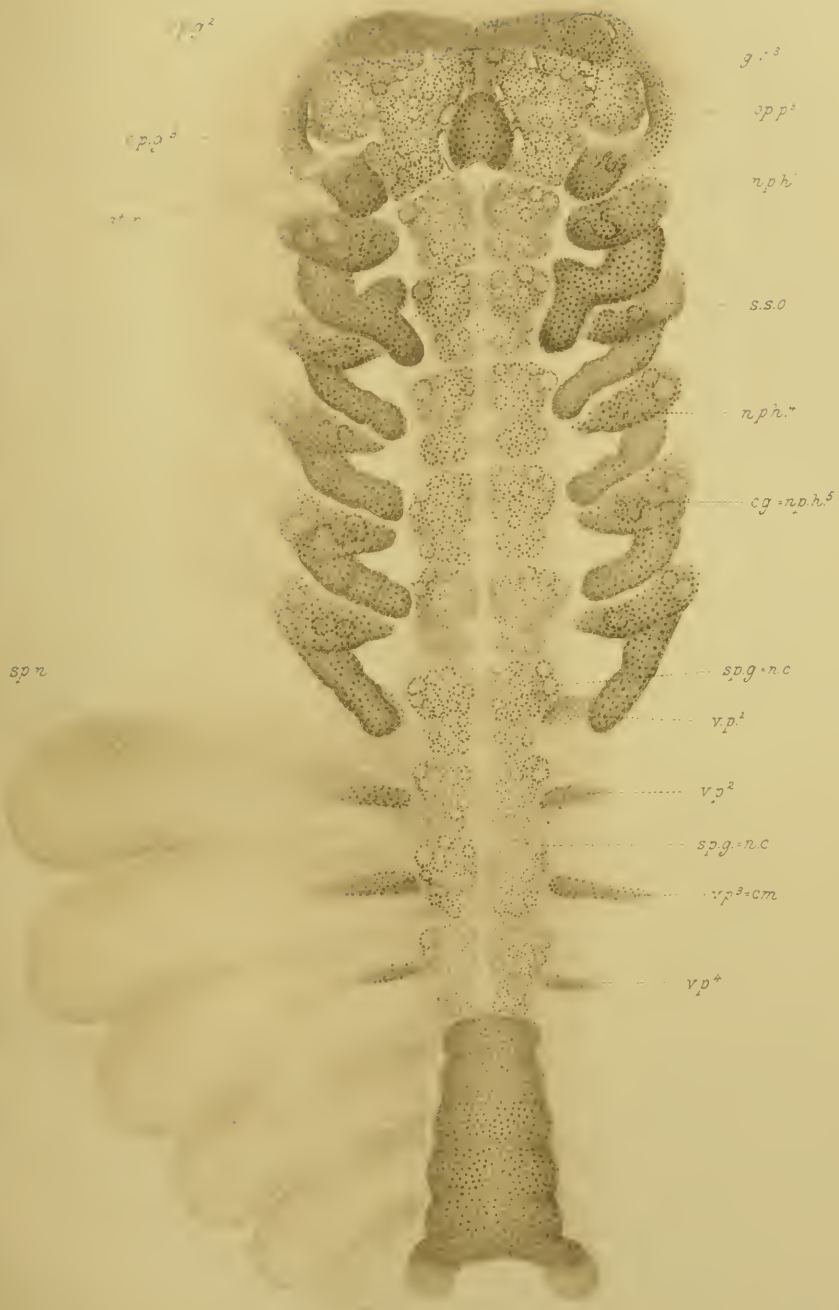


Fig. 3

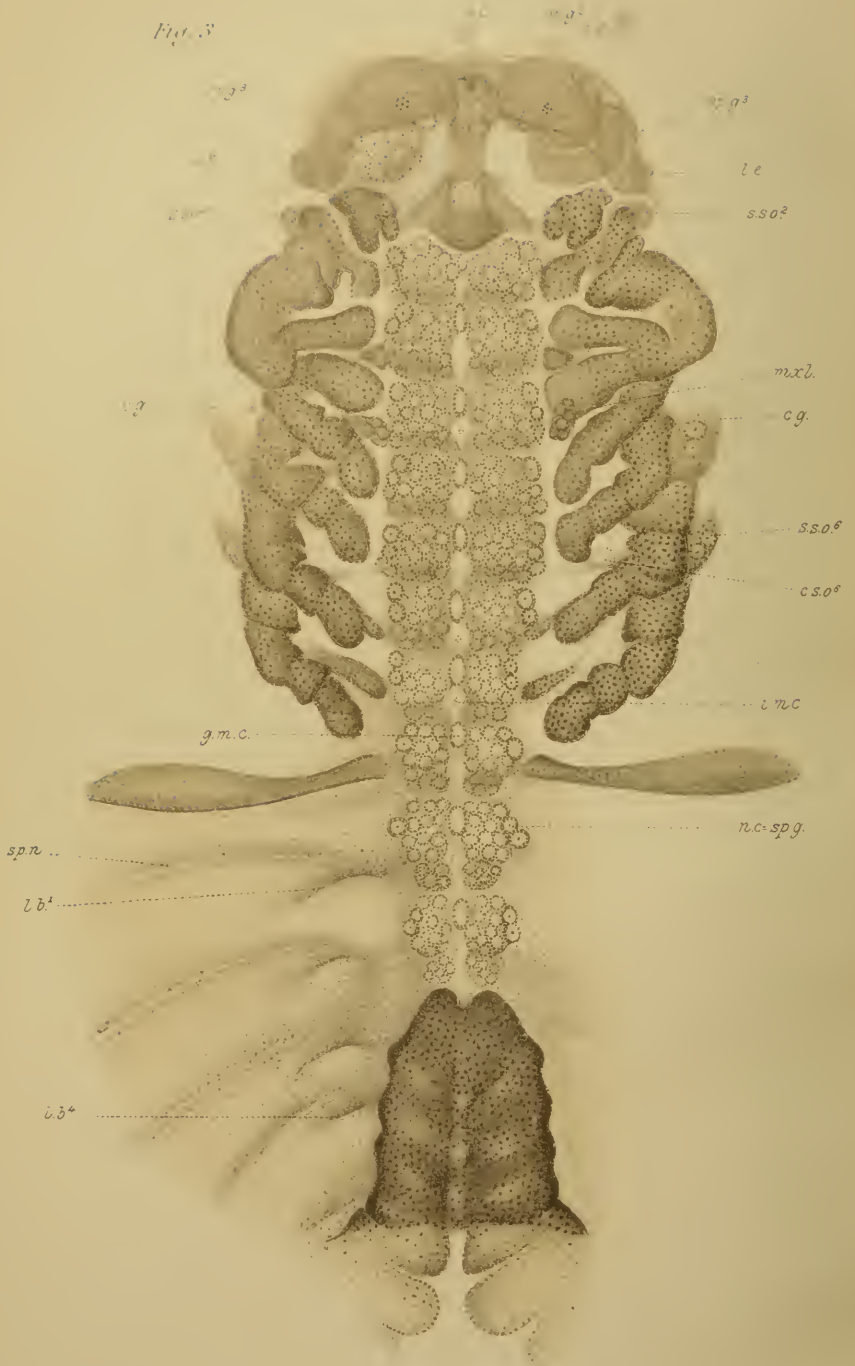
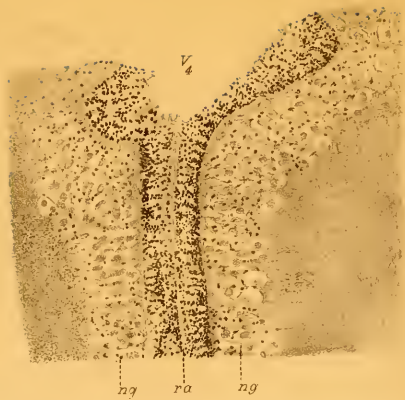
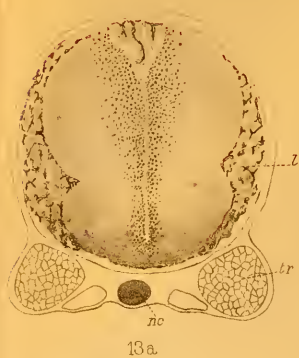


Fig. 4.





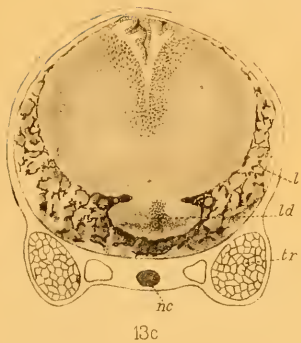
12



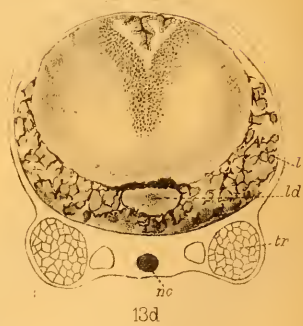
13a.



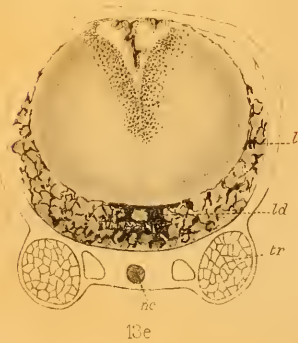
13b



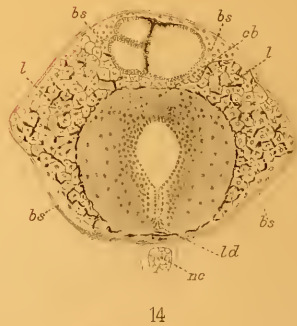
13c



13d



13e



14



15



16



18



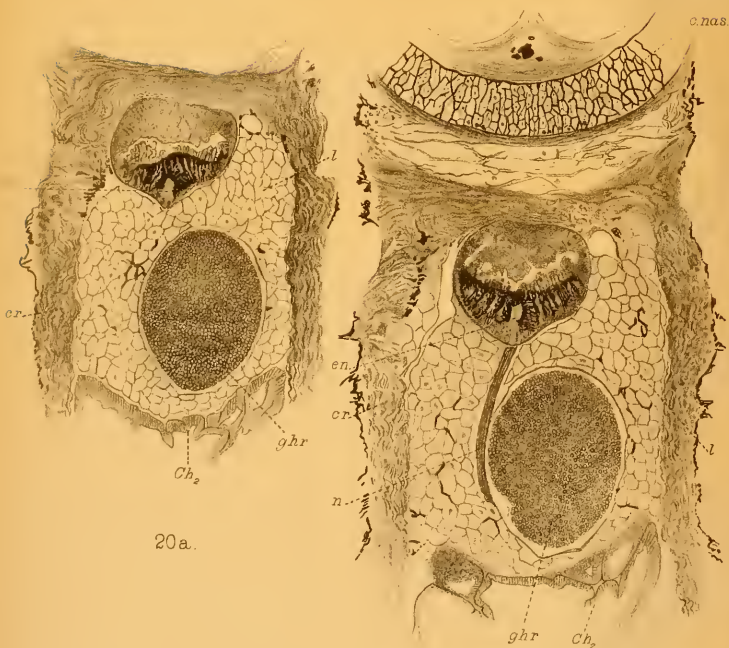
17



19.



21.



20a.

20b



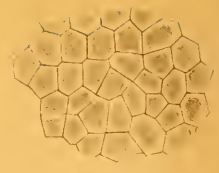
20c.



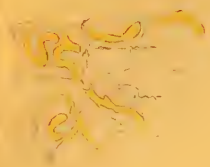
20d



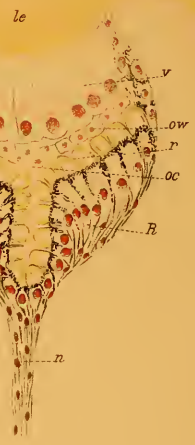
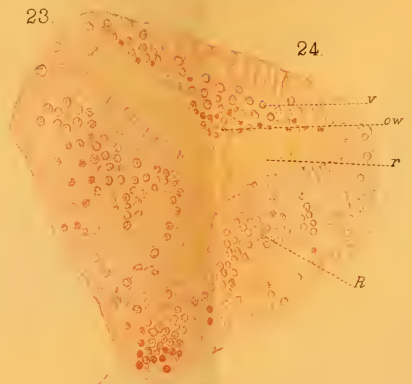
22.



23.



24.



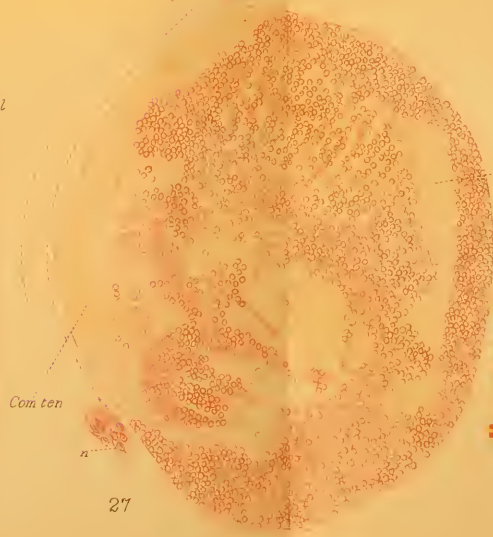
28.



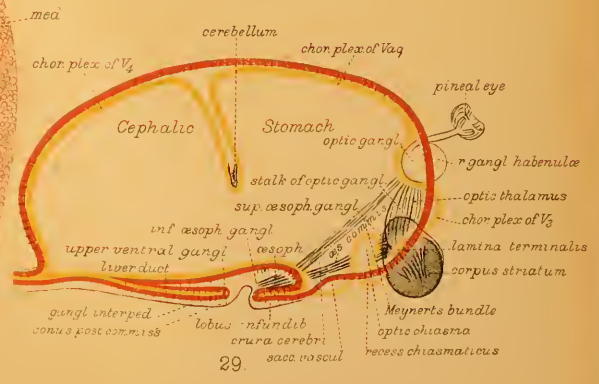
25.



26.



27.



29.

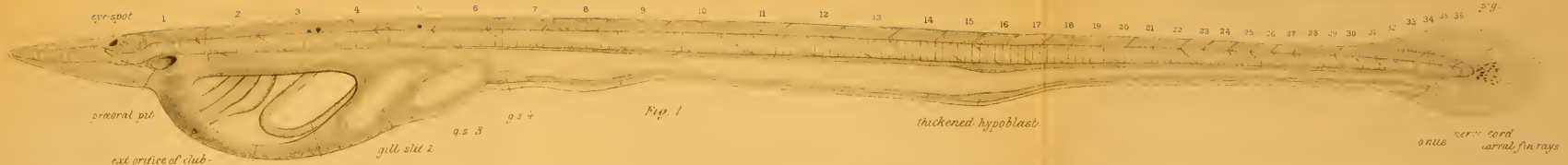


Fig. 1

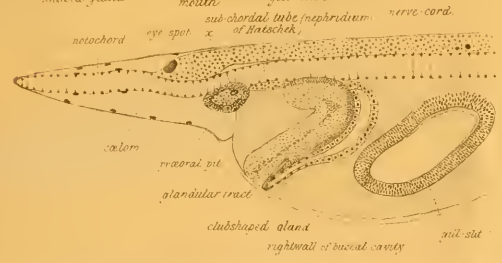


Fig. 2

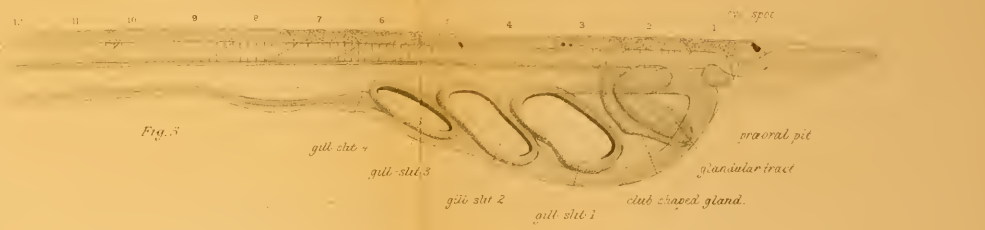


Fig. 3

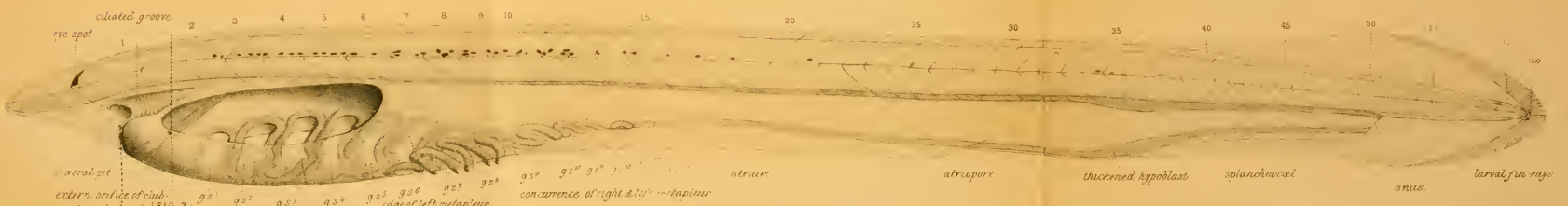


Fig. 4

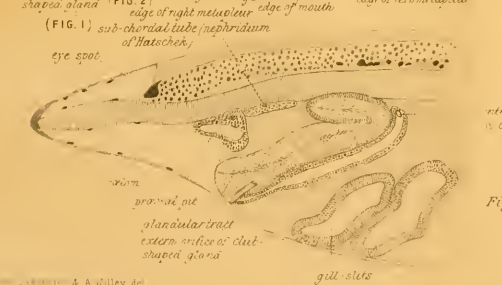


Fig. 5

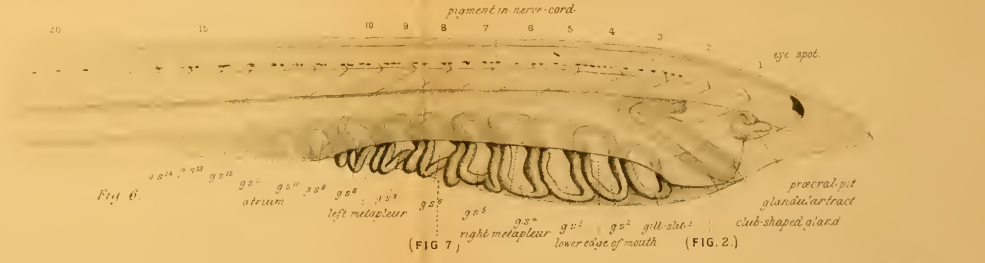
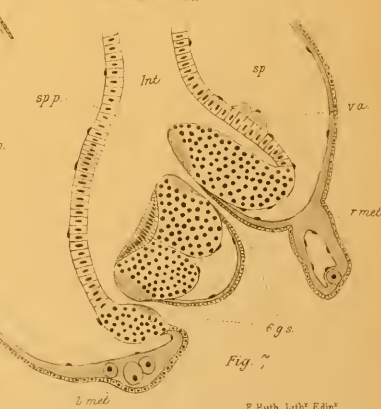
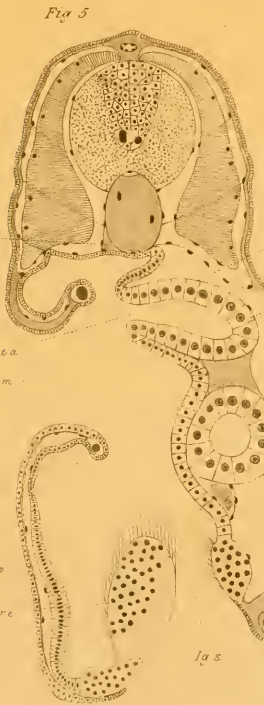
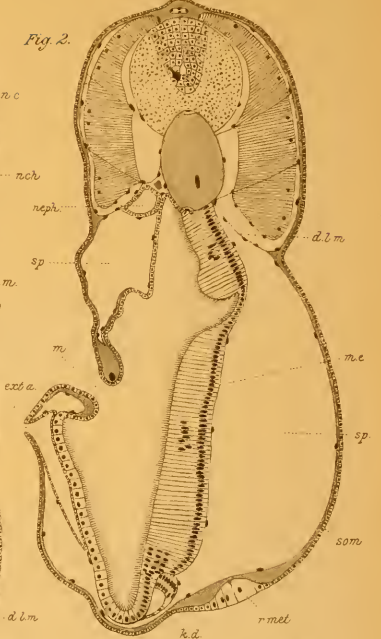
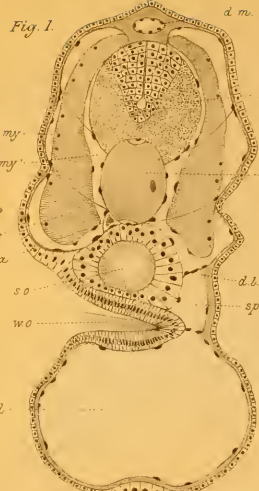
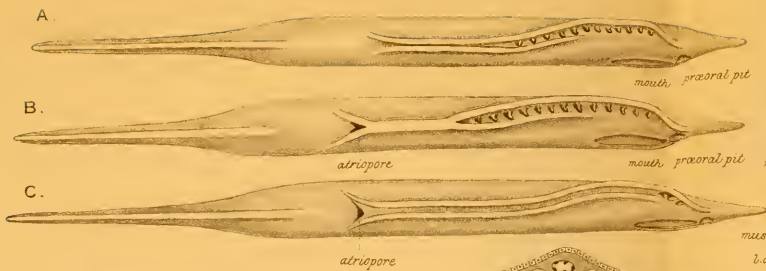


Fig. 6

(FIG. 7)



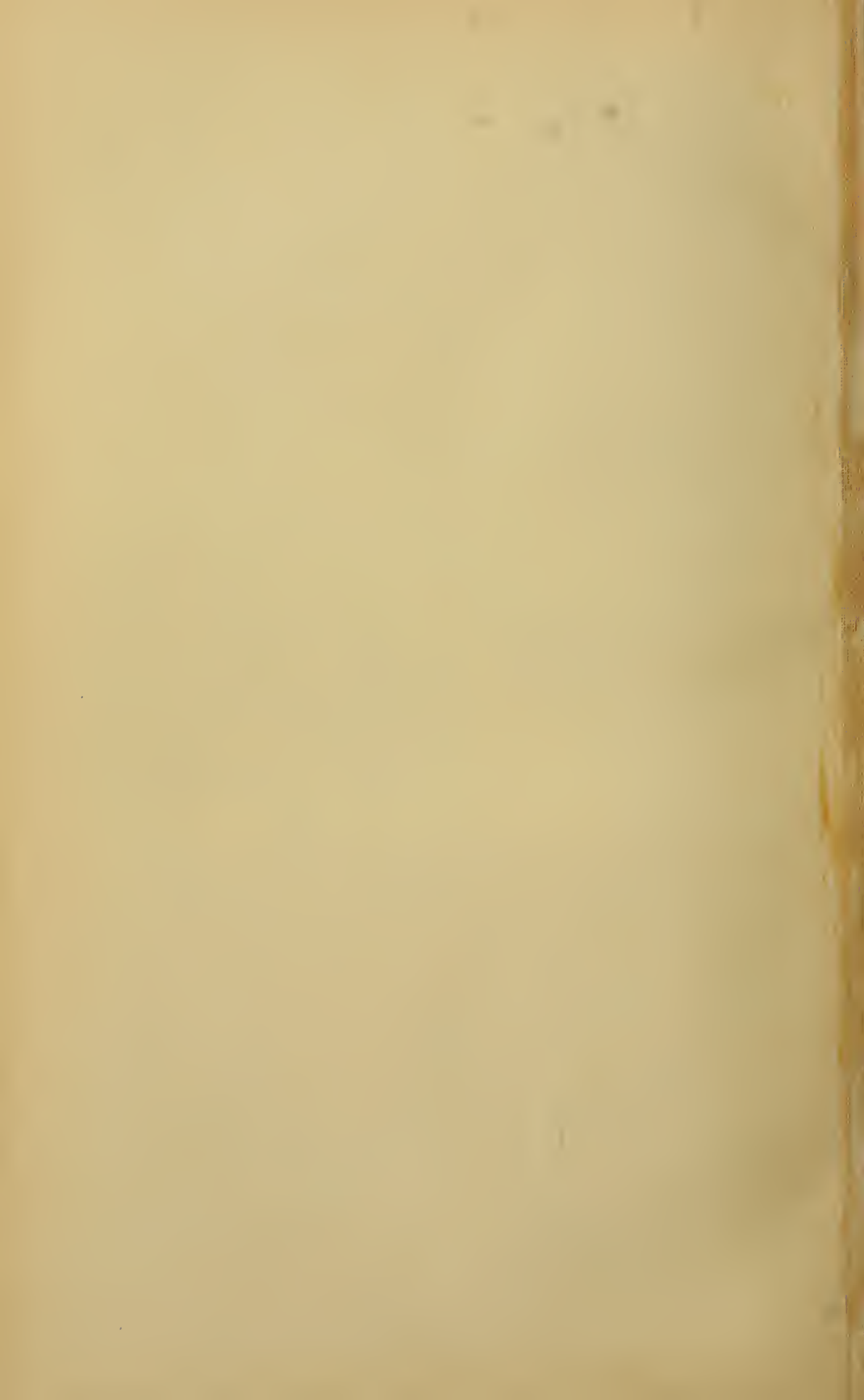


Fig. 16.

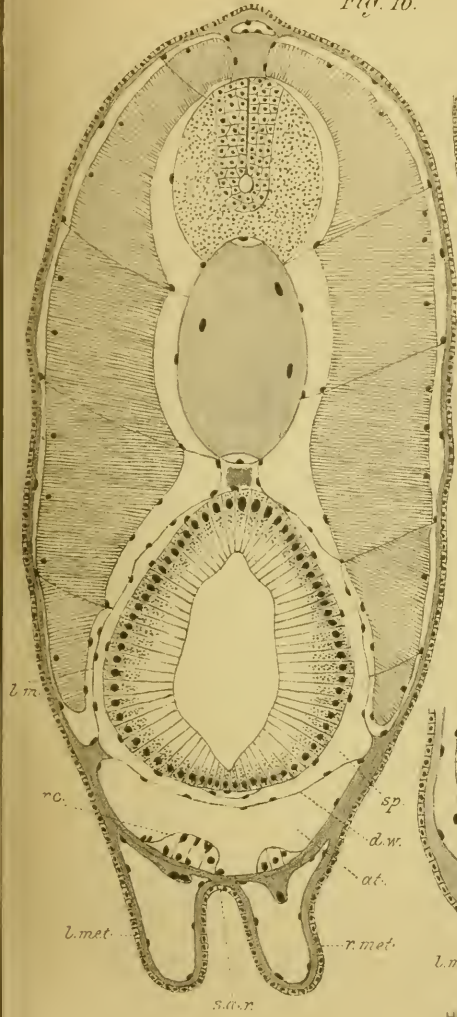


Fig. 17.

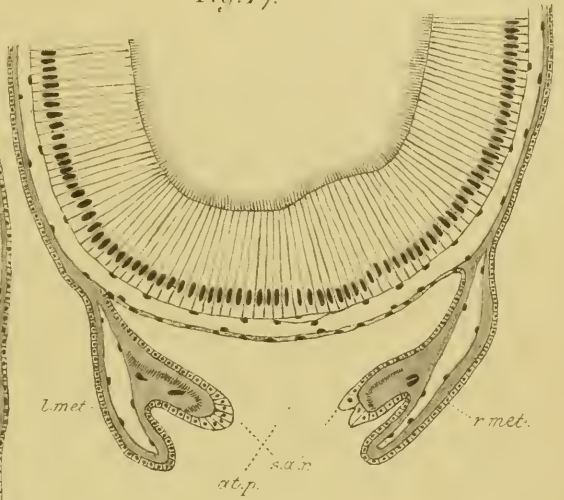


Fig. 18.

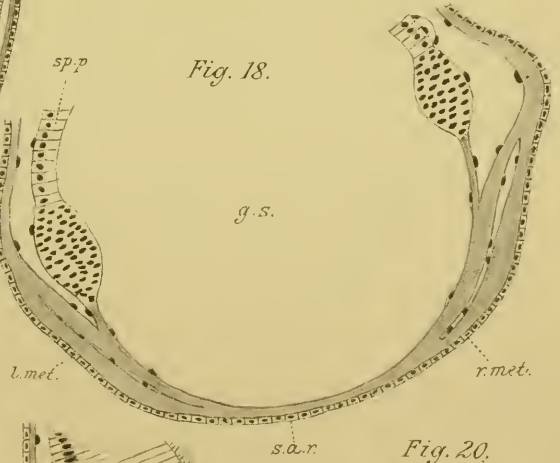


Fig. 19.

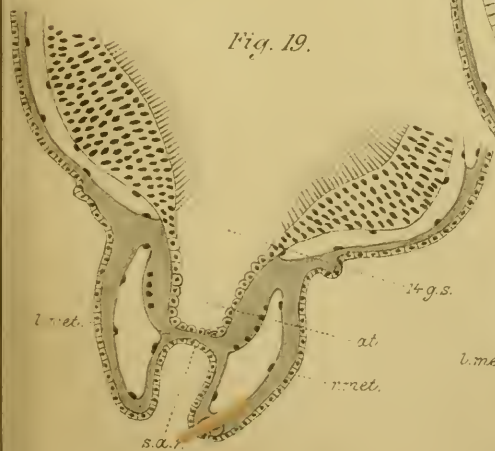


Fig. 20.

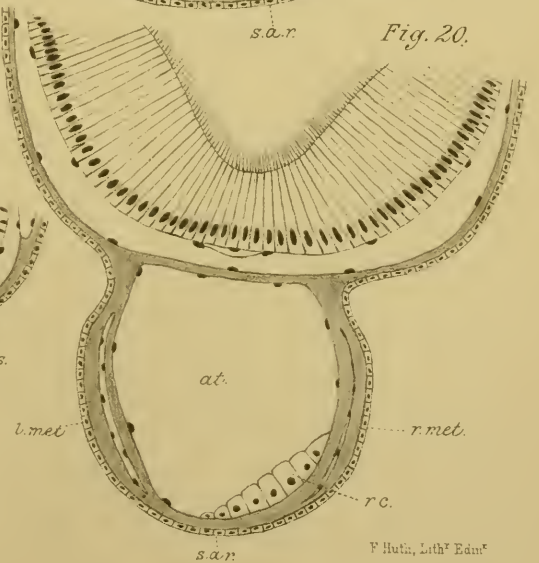


Fig. 1.



Fig. 2.



Fig. 3.

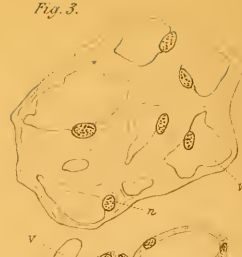
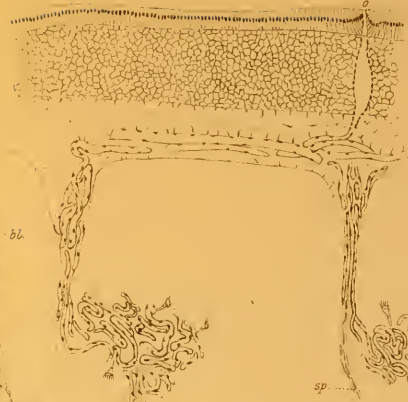


Fig. 8.



Fig. 9.



Mon. Journ. De XXII, NS, P. XXVII

Fig. 12.



Fig. 4.



Fig. 10.

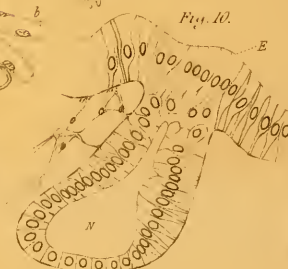


Fig. 5.



Fig. 6.



Fig. 7.

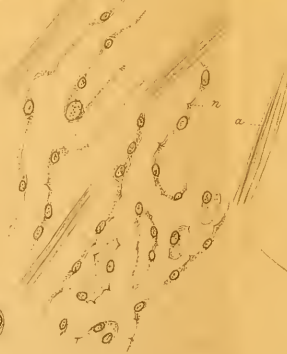


Fig. 11.

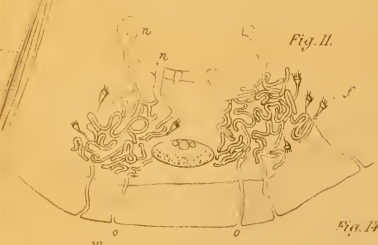


Fig. 13.

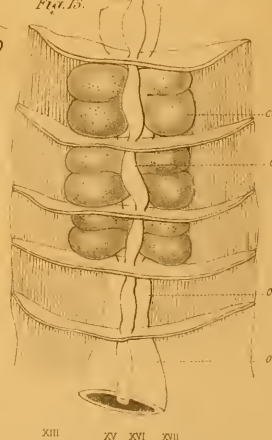


Fig. 14.



Fig. 15.



Fig. 16.

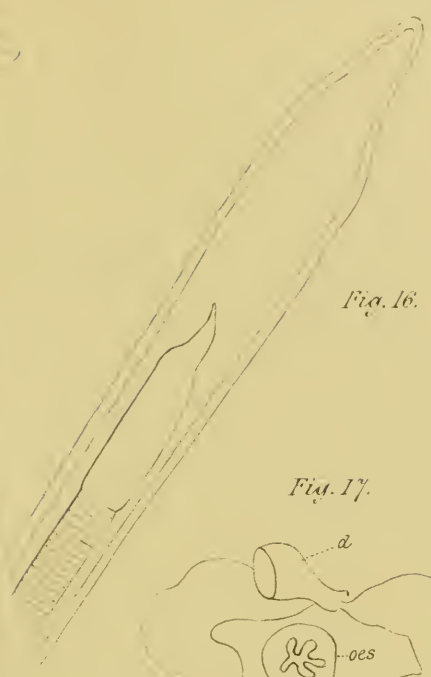


Fig. 17.

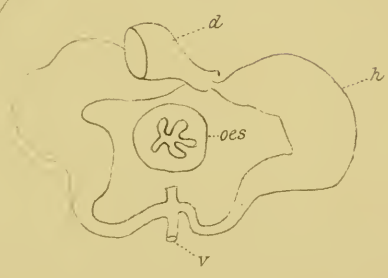
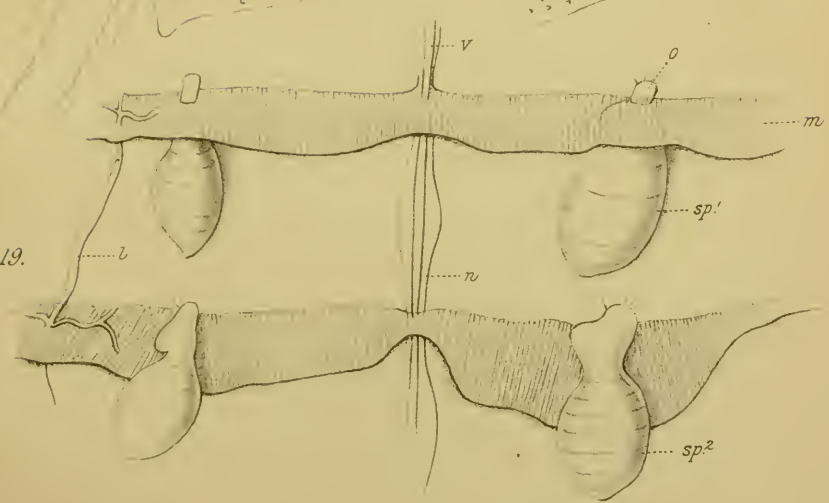


Fig. 18.



Fig. 19.



Right Dorsal Aorta

NOTOCHORD

Fig. 1.

Excretory Tubule
Atrial Extension
Bloodvessel

COELOM

Right Aorta

Fig. 2.

Dorsal Groove of pharynx
Excretory Tubule
Atrial Extension
Bloodvessel

COELOM

Right Aorta

Fig. 3.

Bloodvessel of Excretory Tubule
Excretory Tubule
Atrial Extension
Bloodvessel

COELOM

ATRIUM

Atrial Epithelium

Tongue Bar

Primary Bar

Right Aorta

Fig. 4.

Branch of Aorta to Excretory Tubule
Bloodvessel
Opening of Excretory Tubule

COELOM

ATRIUM

Atrial Extension

Atrial Extension

Bloodvessel of gill Bar

Primary Bar

Tongue Bar

Primary Bar

NOTOCHORD



Fig. 6.

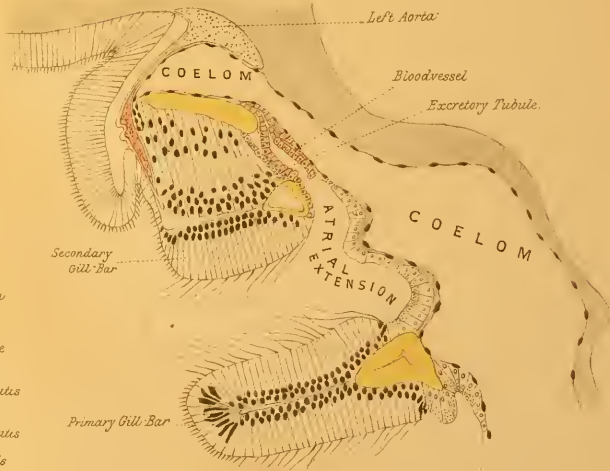




Fig. 13. (z)



Fig. 14. (65)



Fig. 15. (52)



Fig. 16. (122) [Fig. 17. (z)]



Fig. 18. (52)



Fig. 19. (52)

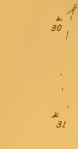


Fig. 20. (52)



Fig. 21. (65)



Fig. 12. (52)



Fig. 22. (122)



Fig. 23. (122)



Fig. 24. (122)

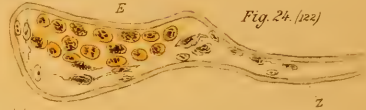


Fig. 26. (z)

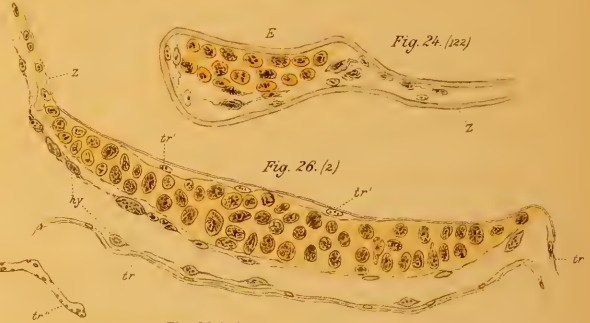


Fig. 25. (z)



Fig. 28. (52)



Fig. 27. (z)



Fig. 29. (52)



Fig. 30. (52)



Fig. 31. (52)



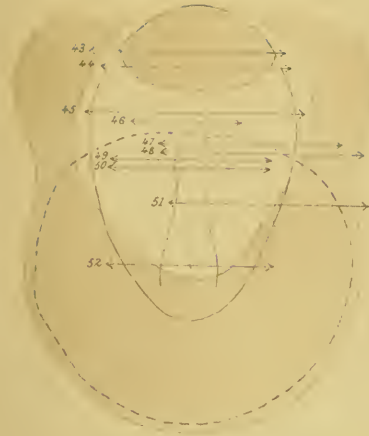


Fig. 32. (73)



Fig. 33. (73)

Fig. 34. (73)

Fig. 35. (73)

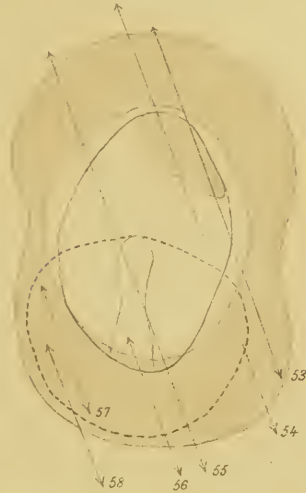


Fig. 36.

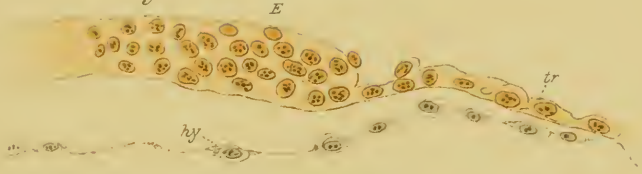


Fig. 37.



Fig. 38.



Fig. 39.

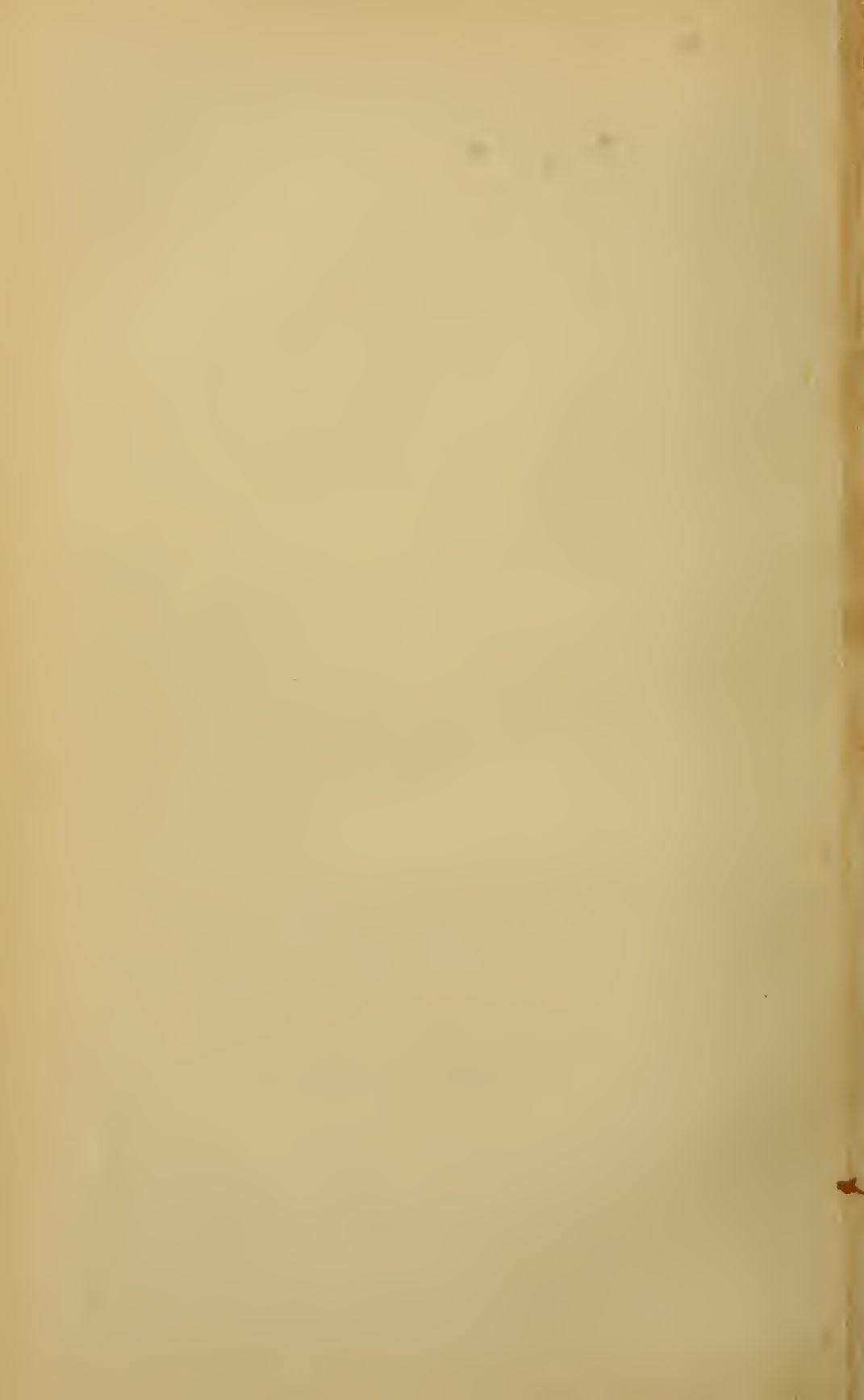


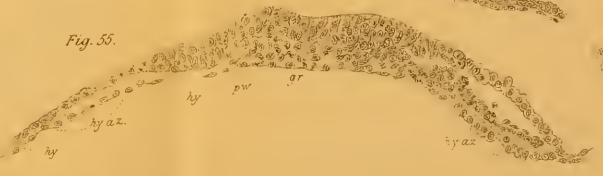
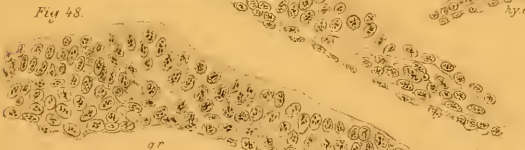
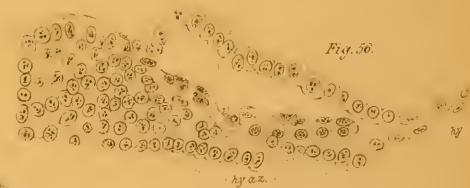
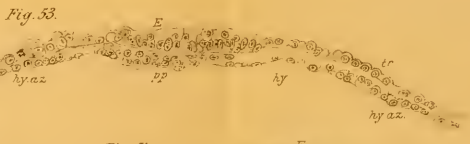
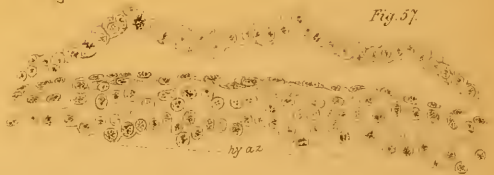
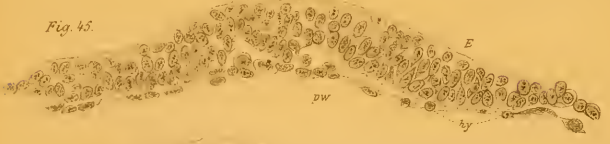
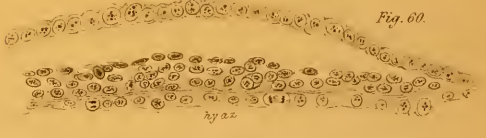
Fig. 40.



Fig. 41.







66 Fig. 62 (+s)

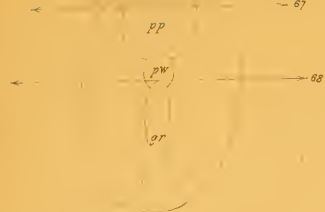


Fig. 63 (+s)

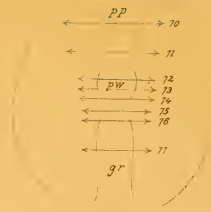


Fig. 66.

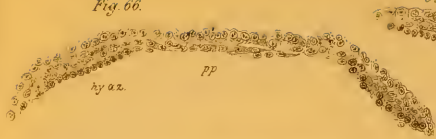


Fig. 67.



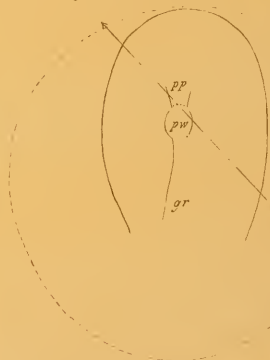
Fig. 68.



Fig. 69.



Fig. 64 (+s)



69 Fig. 65 (+s)



Fig. 70.

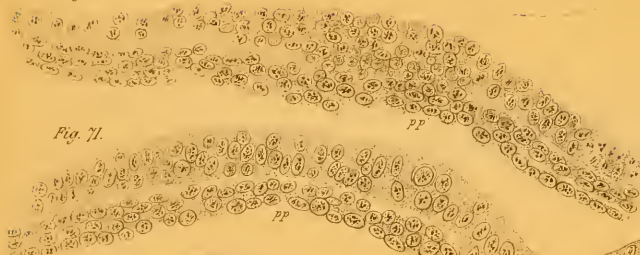


Fig. 71.



Fig. 72.

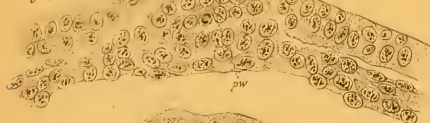


Fig. 75.



Fig. 73.



Fig. 76.



Fig. 74.



Fig. 77.



Fig. 78.



Fig. 79. (+2)

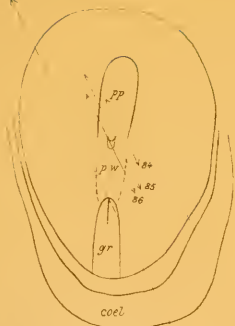


Fig. 83.

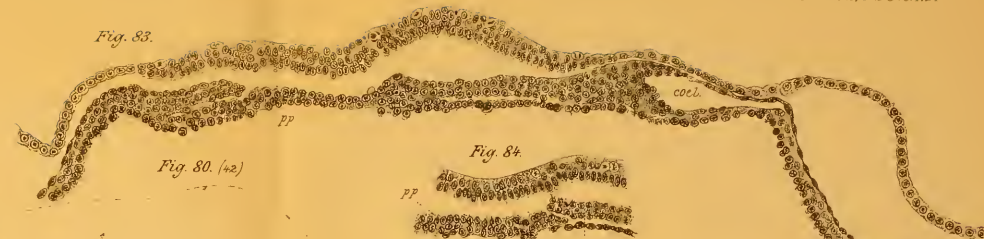


Fig. 80. (+2)

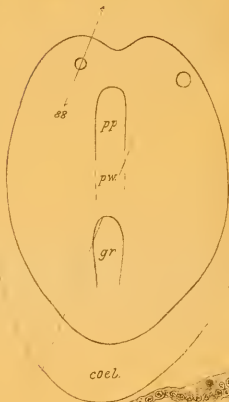


Fig. 84



Fig. 85.

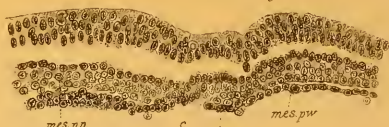


Fig. 88.



Fig. 86.



Fig. 87.



Fig. 89.



Fig. 90



Fig. 91.



Fig. 83. (+2)



Fig. 81. (+2)

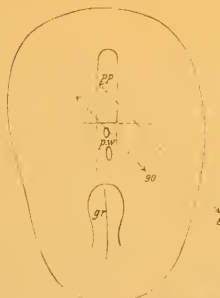


Fig. 93.

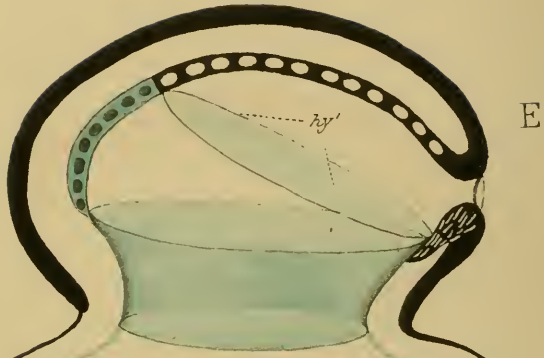


Fig. 92.

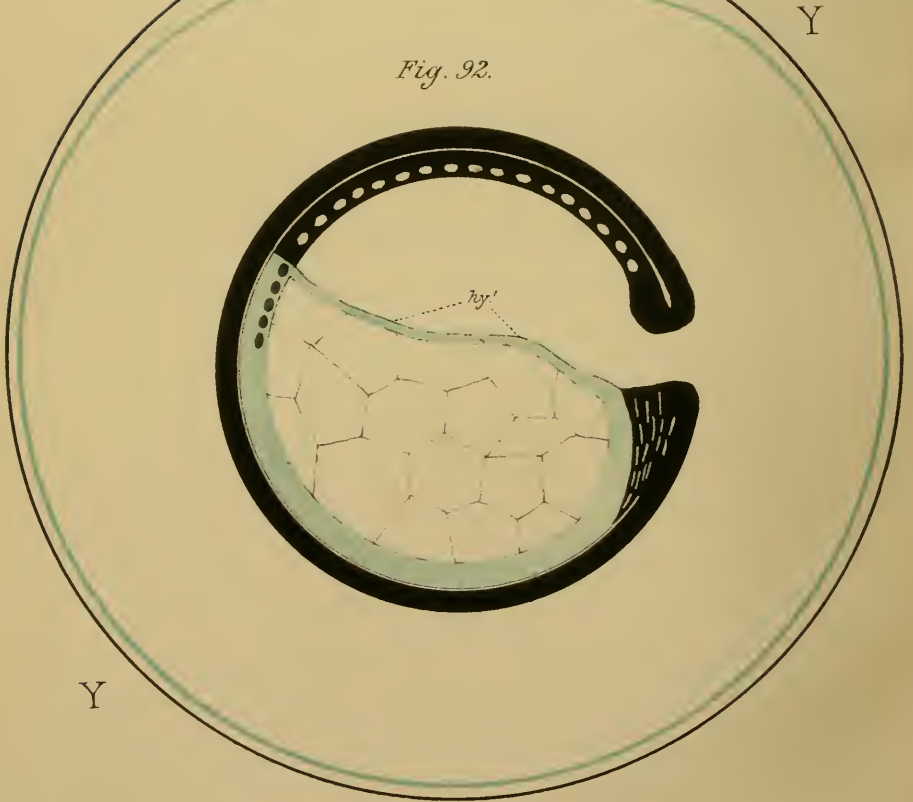


Fig. 95.

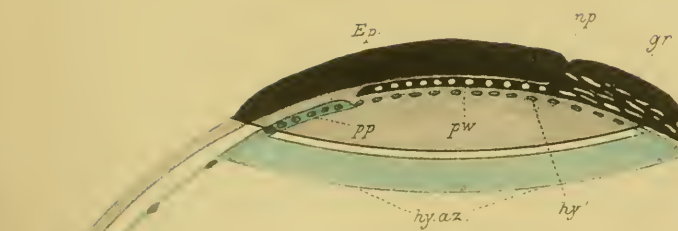


Fig. 94.

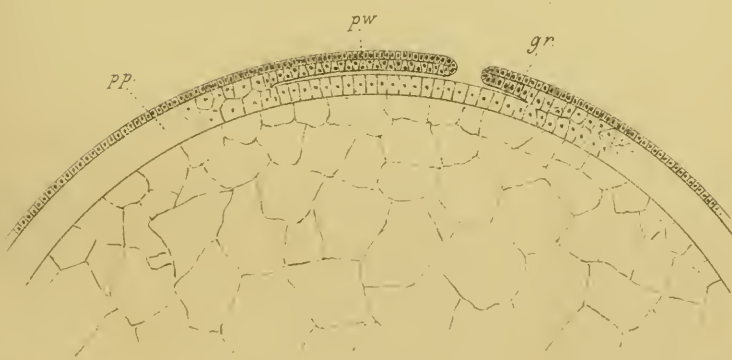


Fig. 1.

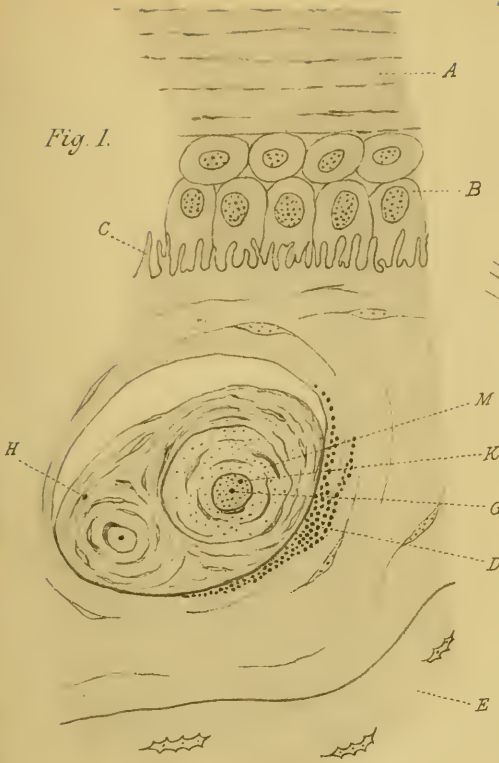


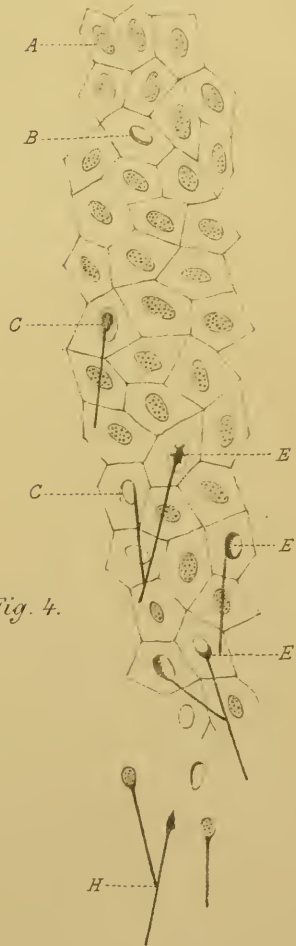
Fig. 2.

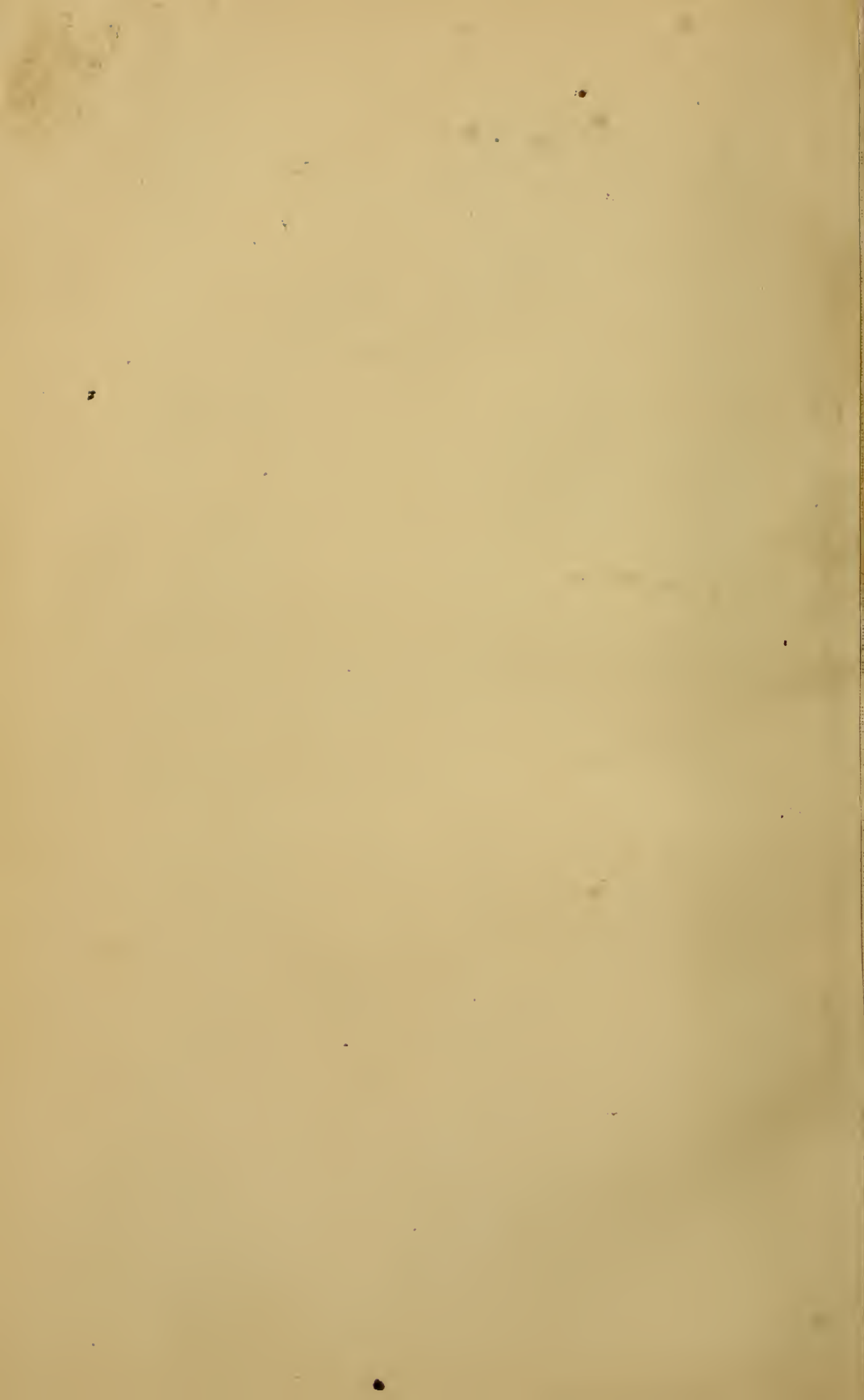


Fig. 3.

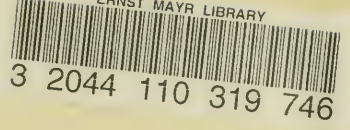


Fig. 4.





ERNST MAYR LIBRARY



Date Due

~~DEC 77~~

..

