

Botanical Notes

1862

1862

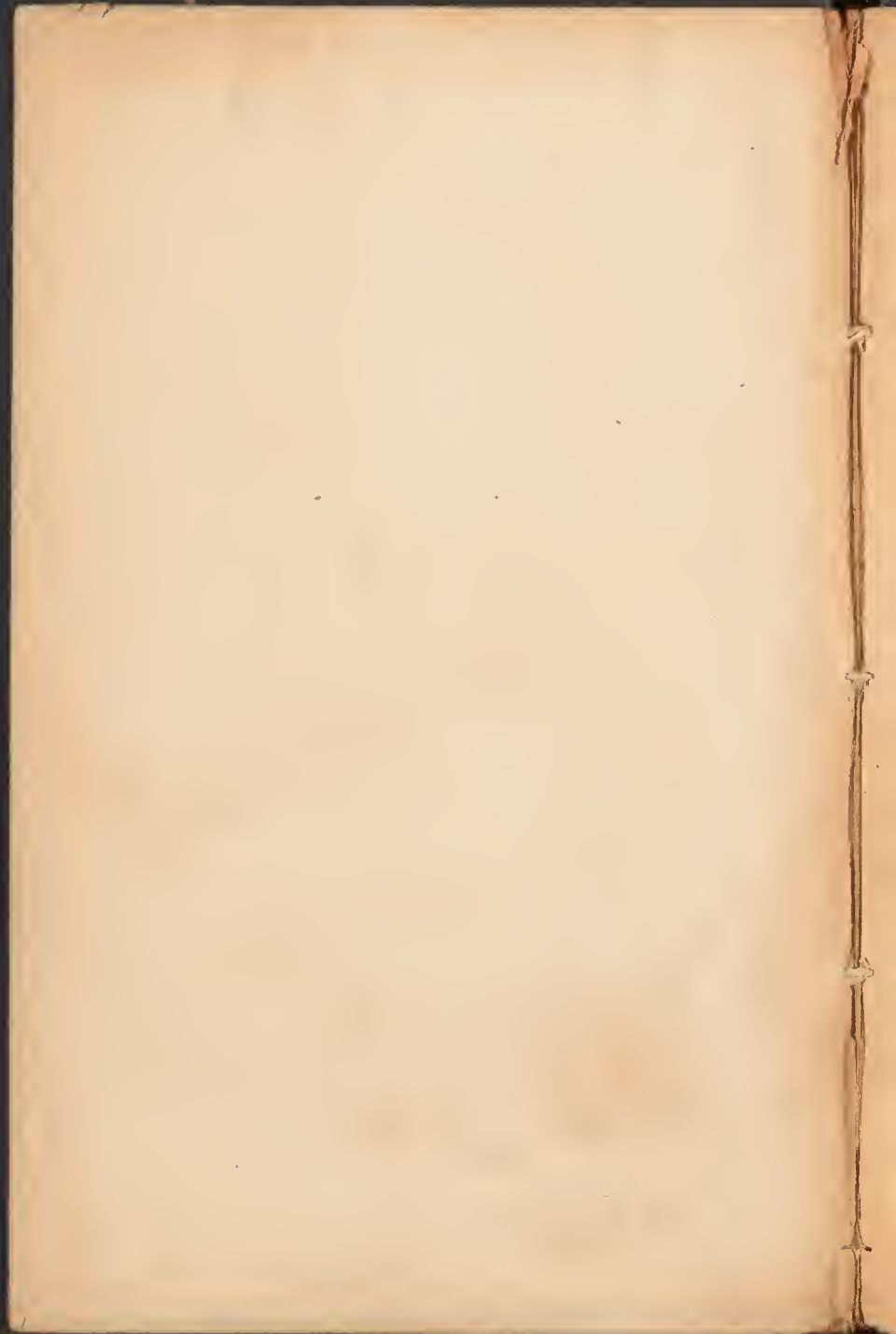
1862

June

St. Louis

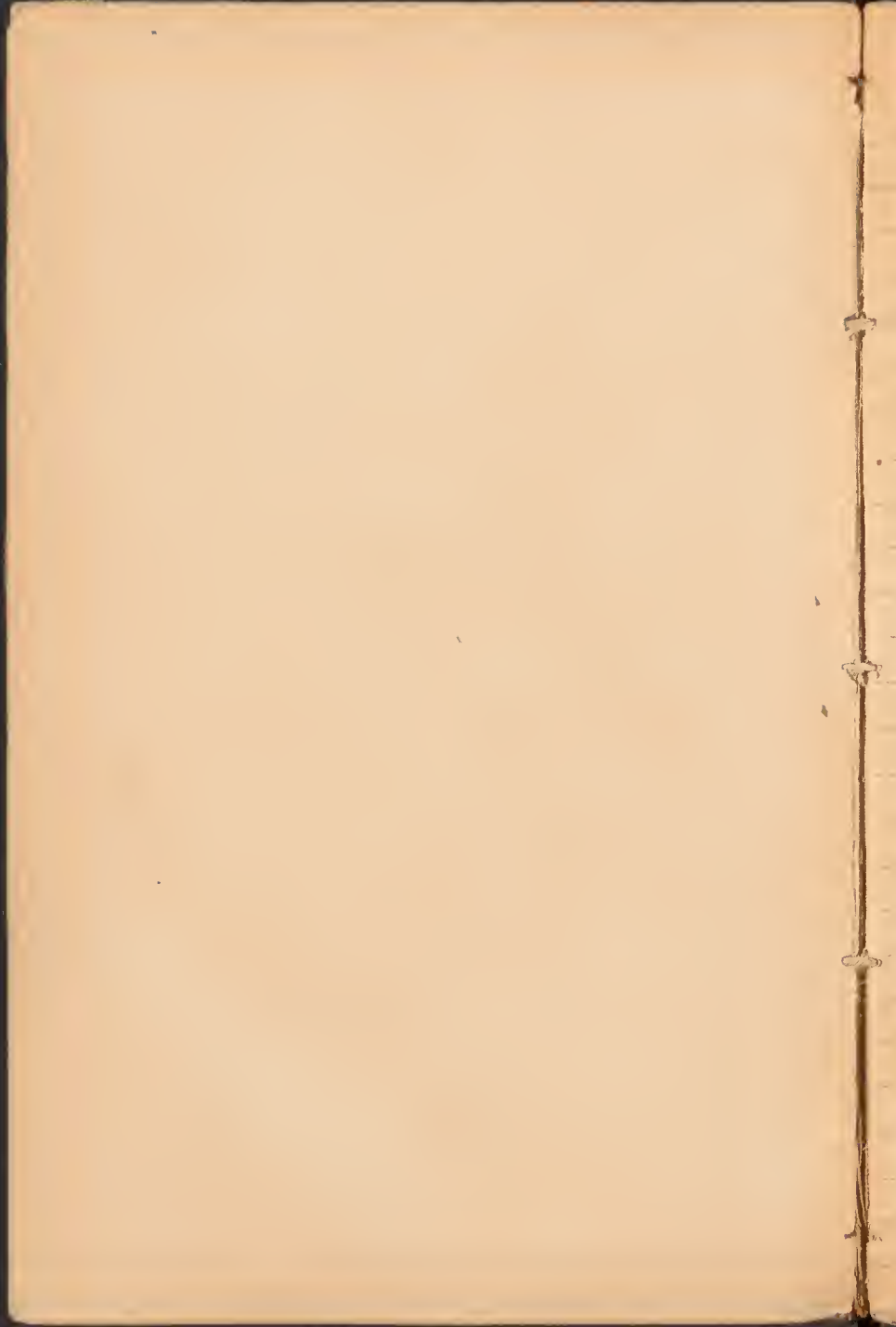
Brewer

⑦



Brown

7





2
L. H. H. - June 21st

2

W. H.
... ..

1202

[Faint handwritten text]

1203

[Faint handwritten text]

1204

[Faint handwritten text]

1205

[Faint handwritten text]

1206

[Faint handwritten text]

1207

[Faint handwritten text]



1872 - June 30
Coral Reef

Handwritten text in Urdu script, possibly a name or title.

۳

Amal Khan

1211.

Top of 187
...

1213.

... top of
... ..
... ..
... ..

1214.

Euphorbia
Top of

1215.

... ..

1216.

... ..
North slope of
... ..

1217.

... ..
... ..
... ..
... ..
... ..
... ..

Wm. J. ...
...

1218

Old Man

... ..
... ..
... ..
... ..

1219

Round

... ..

1220

Round Grass

... ..

1221

... ..
... ..

1222

a. ?

1223

Malva
... ..
... ..

Sept 12 1884
C. C. ...

Seeds

Case 12-3

1770

1770

1771

1771

1772

1772

1773

1874

Journal

1235. *Urtica dioica* L. - *Urtica*
dry hill side near station

1236. *Urtica* on dry hill side near
seen at 92878

1236. *Polygonum*
A common grass on dry hill side
but not abundant much in groups

1237. *Urtica* - *Urtica*

1238. *Polygonum* - *Polygonum*

1239. *Polygonum* - *Polygonum*

1240. *Polygonum*

1241. *Polygonum* - *Polygonum* 1185

1870
1871
1872
1873
1874
1875
1876
1877
1878
1879
1880
1881
1882
1883
1884
1885
1886
1887
1888
1889
1890
1891
1892
1893
1894
1895
1896
1897
1898
1899
1900

1240

[Faint handwritten notes]

1241

[Faint handwritten notes]

1242

[Faint handwritten notes]

1245

[Faint handwritten notes]

1248

[Faint handwritten notes]

Charles W. Peirce

Handwritten text at the top of the page, possibly a title or date, which is mostly illegible due to fading.

1250

1250 - *Ulmus* - *Ulmus* - *Ulmus*

1251

1251 - *Ulmus* - *Ulmus* - *Ulmus* -
Ulmus - *Ulmus* - *Ulmus* -
 8 feet long - *Ulmus* - *Ulmus* -
 this was seen again in the same
 manner - *Ulmus* - *Ulmus* -
Ulmus -

1253

1253 - *Ulmus* - *Ulmus* - *Ulmus* -
Ulmus - *Ulmus* - *Ulmus* -

1254

1254 - *Ulmus* - *Ulmus* - *Ulmus* -
Ulmus - *Ulmus* - *Ulmus* -
Ulmus - *Ulmus* - *Ulmus* -
Ulmus - *Ulmus* - *Ulmus* -

1255

1255 - *Ulmus* - *Ulmus* - *Ulmus* -

June 11th 82

1250

Common dry pond

1257

Sides of pond -

1258

A common "bunch grass"

1259

Retracted
over dry hills - for white or green in white -

1260

Asplenium
over some dry hills - probably on
a carbonaceous material - fronds pale
green - upper leaf large & erect in air
under leaf deeply erect with 2
lobes in the throat - all the segments
marked with fine lines -

1261

Summit of very dry hill - per 6-laciniate
- fringed at tip, white with strong
...
Stems and branches glaucous pubescent
White plant stalks are firm ...
See it not -

Vol. 44 June 11th -

1762

1762

1762

1762

1762

1762

1762

1762

1764

1764

1764

1764

1765

1765

1765

1765

1765

1766

1766

1766

1766

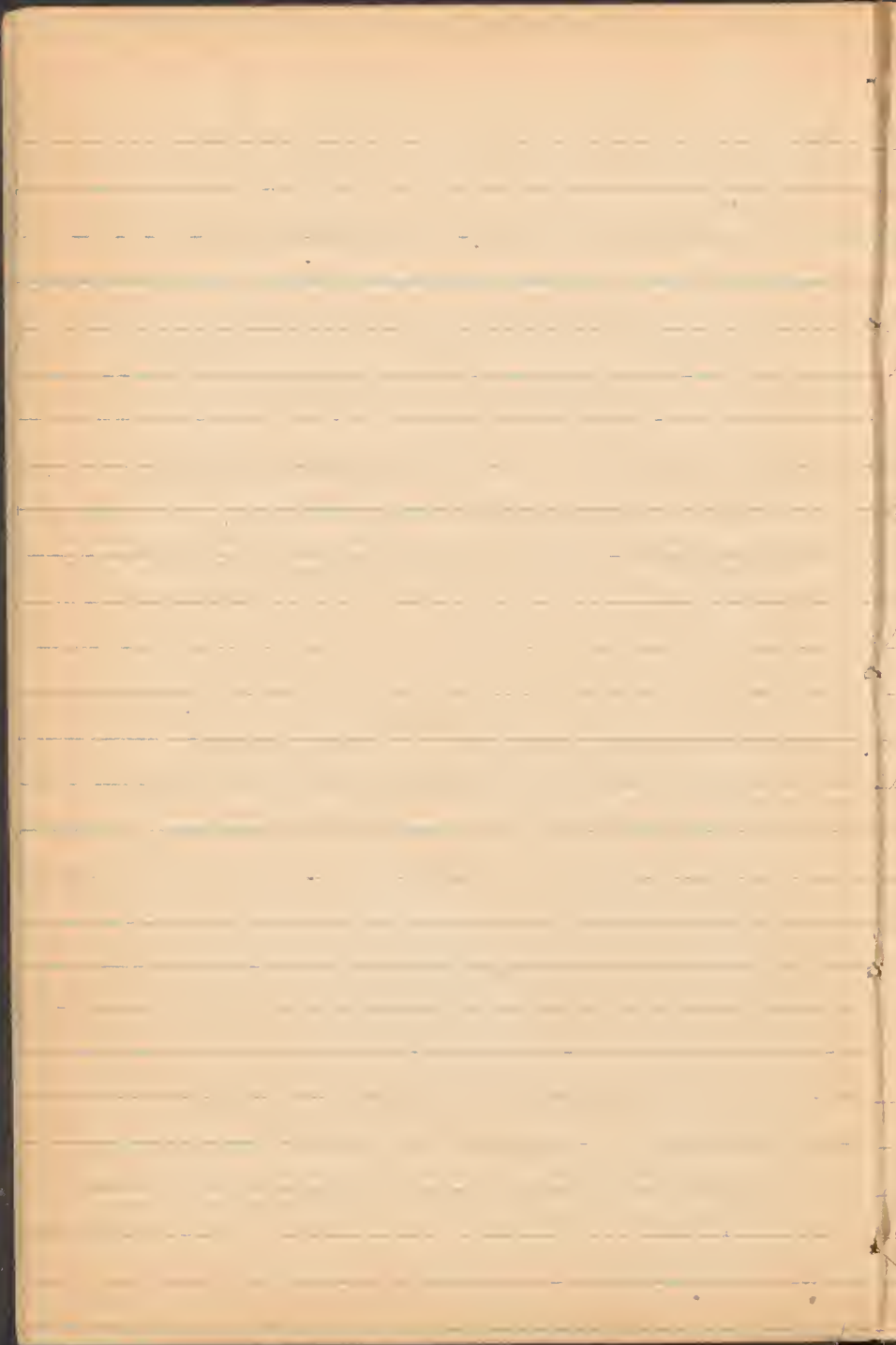
1766

1766

1766

1766

1766



5
April 1877

Miss M. J. Orestino Esq.

July 1888

Wm. B. ...
L. S. ...

Sp. ...

June 20th ...

1780

Ex. 100

... ..
... ..
... ..
... ..

1781

... ..
... ..

1782

... ..
... .., by
... ..
... ..
... ..
... ..

1783

Ex. 100

... ..
... ..

1784

... ..
... ..
... ..

Jan 20

Handwritten notes or entries, possibly including a date or name, written in cursive script.

Notes on

... ..
... ..
... ..
... ..

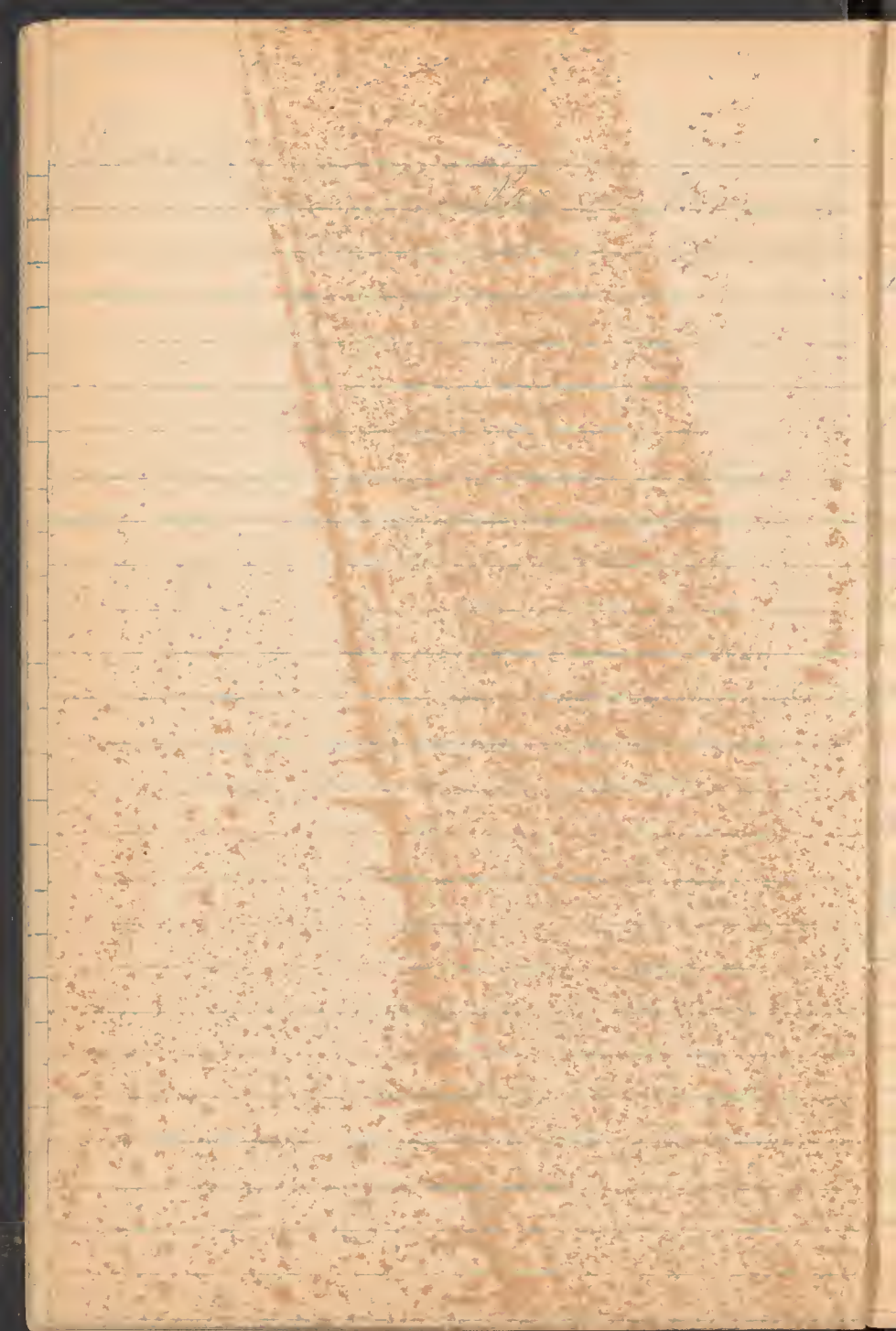
2

... ..
... ..
... ..

... ..
... ..
... ..
... ..

... ..
... ..
... ..
... ..
... ..

... ..
... ..



1155

Stream channel

1156

Stream channel
further down

1170

Stream channel
further down
meas about 1/2
mile from just below a parking
Ears of some plants here

1201

Stream channel
further down
meas about 1/2
mile from just below a parking
Ears of some plants here



June 23^d

1222. *Cucurbita*
Parasitic on *Eryngium*, and on *E. sp.*
coltzi - on *E. sp.* - common

1293
Phalaena - *sp.* - on *E. sp.* in
caves, seen at night in caves from
the entrance to the entrance of the
the entrance and seen during - at least
only seen in caves at night

1204
Phalaena - *sp.* - on *E. sp.* - seen
at night in caves, seen at night
in caves, seen at night in caves
at night in caves, seen at night
at night in caves, seen at night

1205 *Cucurbita*
sp. - on *E. sp.* - common

1206
Phalaena - *sp.* - on *E. sp.* - seen
at night in caves, seen at night

Pack No. 1

2nd March 1882

Dear Mother

I received your letter

of the 21st and was glad to hear from you
and to hear that you were all well
I am well at present

Yours affectionately

J. D. Miller
I am well at present
and hope these few lines
will find you all the same
I have not much news to write
at present

July 5th
M^r Hamilton

July 1884
H. H. H.

1884

12

7

1834

[Faint handwritten text]

1835

[Faint handwritten text]

1836

[Faint handwritten text]

1837

[Faint handwritten text]

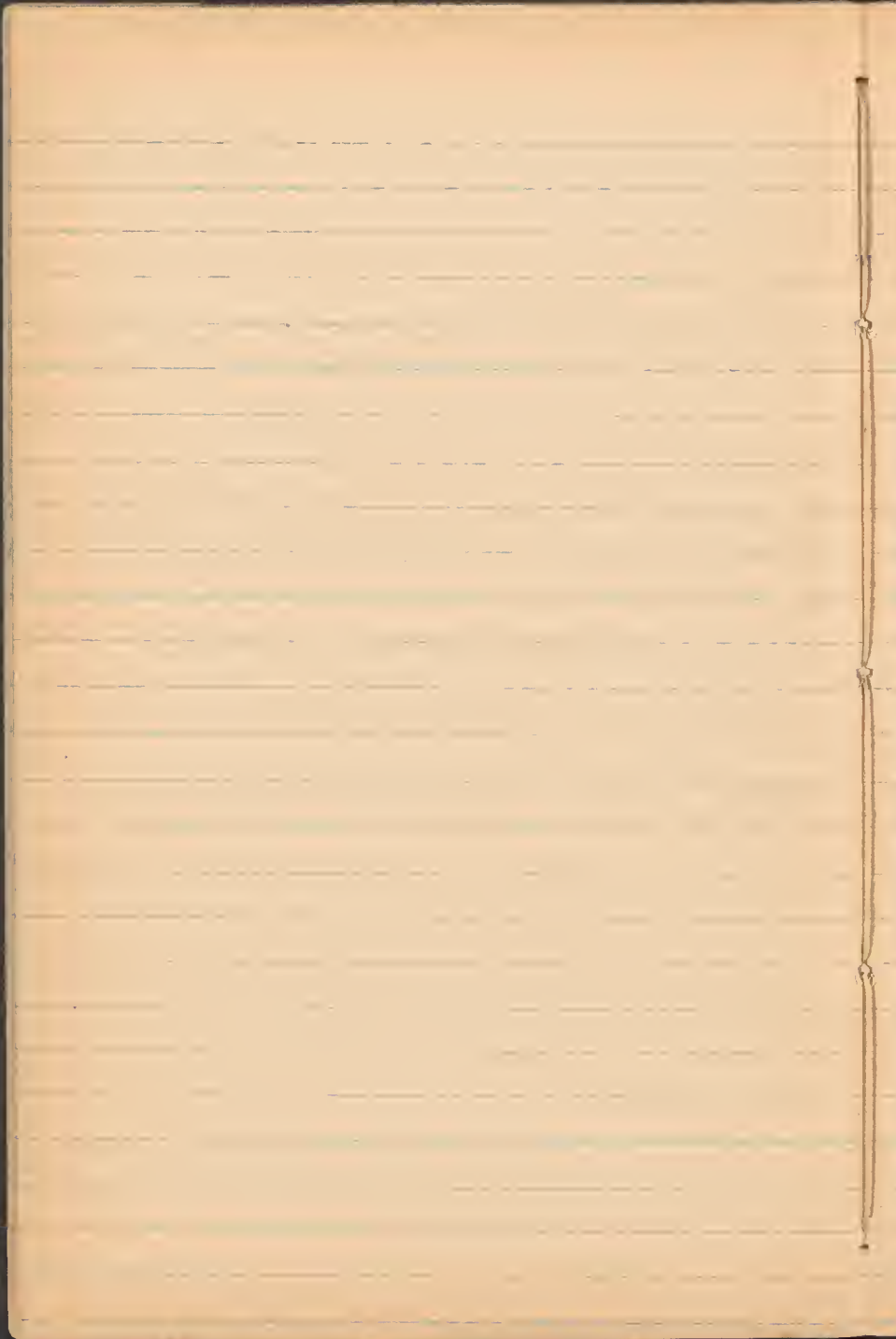
1838

[Faint handwritten text]

1839

[Faint handwritten text]

July 5th 1839 Have been to the
valley...



1862
10. 10. 1862

130

Handwritten notes in cursive script, possibly describing a specimen or location.

131

Handwritten notes in cursive script, possibly describing a specimen or location.

132

Handwritten notes in cursive script, possibly describing a specimen or location.

133

Handwritten notes in cursive script, possibly describing a specimen or location.

134

Handwritten notes in cursive script, possibly describing a specimen or location.

near Putah Creek

1818

1818

1818

1818 *Calceolaria occidentalis*,

1818

1818

New Haven

Aug 21st 1862

1922
Tomb of
...

1922
Tomb of
...

1923
Tomb of
...

1924
Tomb of
...

1925
Tomb of
...

Mr. [unclear] [unclear]

[Faint, illegible handwriting on lined paper]

1320

The ...
 These specimens ...
 ...
 ...
 ...
 ...
 ...
 ...
 ...
 ...
 ...
 ...
 ...
 ...
 ...
 ...
 ...

1321

...
 ...
 ...
 ...

1322

...
 ...
 ...

1323

...
 ...
 ...
 ...

Near Slava

Rockville

330 - 200
Y. 3. 1880
Alt 3000 - 3500 ft. near
Stockville

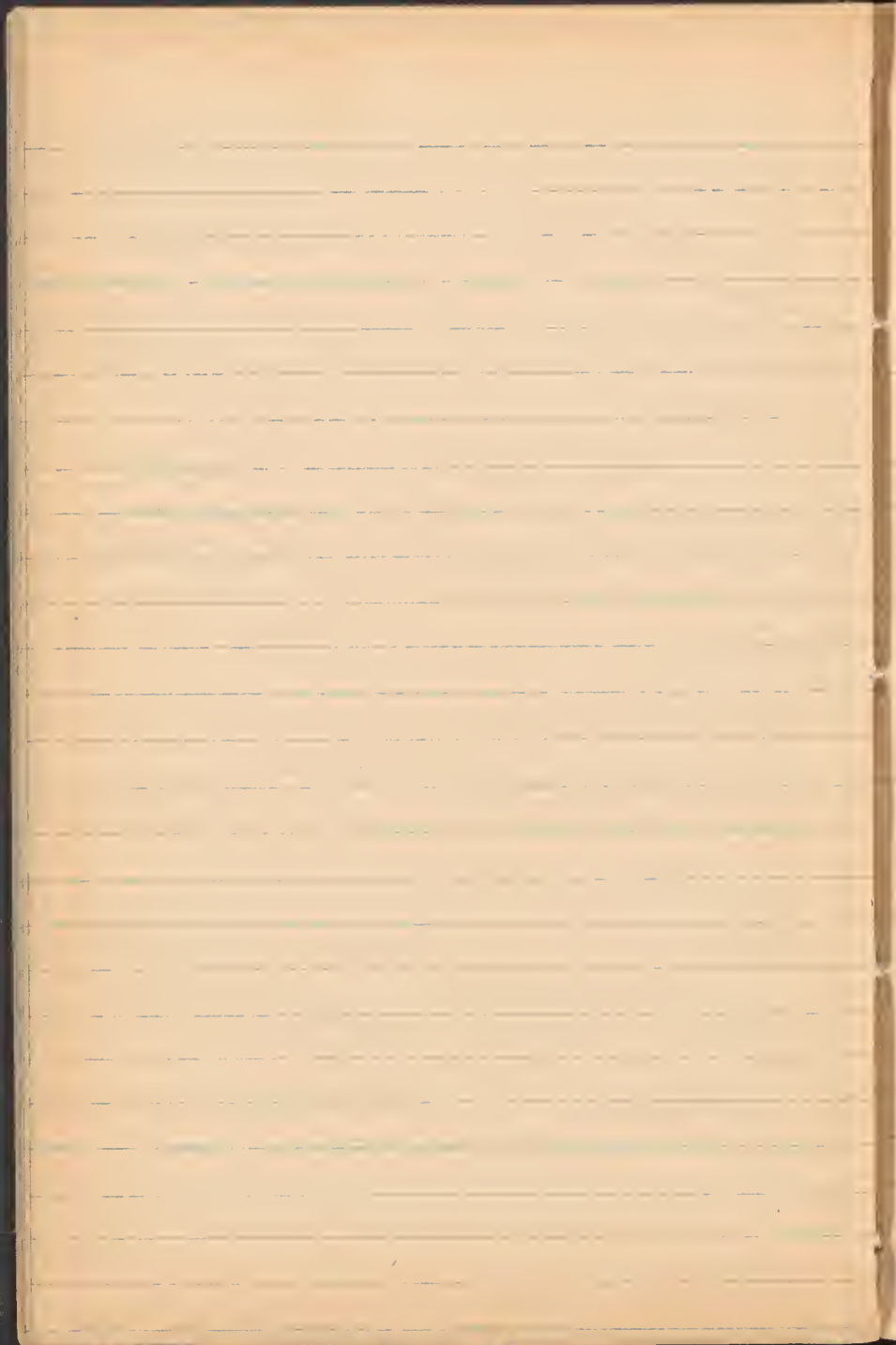
331 - 200
Y. 3. 1880
Alt 3000 - 3500 ft. near
Stockville

332 - 200
Y. 3. 1880
Alt 3000 - 3500 ft. near
Stockville

333 - 200
Y. 3. 1880
Alt 3000 - 3500 ft. near
Stockville

334 - 200
Y. 3. 1880
Alt 3000 - 3500 ft. near
Stockville

335 - 200
Y. 3. 1880
Alt 3000 - 3500 ft. near
Stockville



August 28

13

Left at 10:30 AM for
the summit. The trail was
fairly good - all the way
to the top. The view was
excellent, but the weather
was a bit hazy.

The trail was very
easy on the whole. I
did not have any
trouble. The view was
excellent. I saw
many interesting
plants and animals.
The weather was
just what I needed.

At 10:30 AM I
left the base of the
mountain. The trail
was very good. I
did not have any
trouble. The view
was excellent. I
saw many interesting
plants and animals.
The weather was
just what I needed.

Land of the
Yellow Sea

Sept 7th Camp 90 -
White Sulphur Springs

1351: *Quercus emoryi* var. *laevis* (Pursh) S. P. S. & G. S. P.

1339.

[Faint handwritten text]

1340

[Faint handwritten text]

1343

[Faint handwritten text]

1350

[Faint handwritten text]

94-

28" alt

~~California~~ *Cypripedium Californicum*

Cladonia hungarica

18-19-20-21-22-23-24-25-26-27-28-29-30-31-32-33-34-35-36-37-38-39-40-41-42-43-44-45-46-47-48-49-50-51-52-53-54-55-56-57-58-59-60-61-62-63-64-65-66-67-68-69-70-71-72-73-74-75-76-77-78-79-80-81-82-83-84-85-86-87-88-89-90-91-92-93-94-95-96-97-98-99-100

1350 *Chrysomela* *Chrysomela* *Chrysomela*
 The leaves are greenish
 the flowers are white
 the fruit is black
 the plant is very common
 in the mountains
 the leaves are very
 succulent. The fruit is
 very bitter. The plant
 is very common in
 the mountains. The
 leaves are very
 succulent. The fruit
 is very bitter. The
 plant is very common
 in the mountains.

Chrysomela *Chrysomela* Vol 2
 22947

1351 *Chrysomela* *Chrysomela*
 The leaves are greenish
 the flowers are white
 the fruit is black
 the plant is very common
 in the mountains

1352 *Chrysomela* *Chrysomela*
 The leaves are greenish
 the flowers are white
 the fruit is black
 the plant is very common
 in the mountains

1875

Jan 1st

Feb 1st

Mar 1st

Apr 1st

May 1st

Jun 1st

Jul 1st

Aug 1st

Sep 1st

Oct 1st

Nov 1st

Dec 1st

1359

Book

11. 22. 1881. ...
...
1881 ...

1361

26. 11. 1881. ...
...
... 50' ...

1362

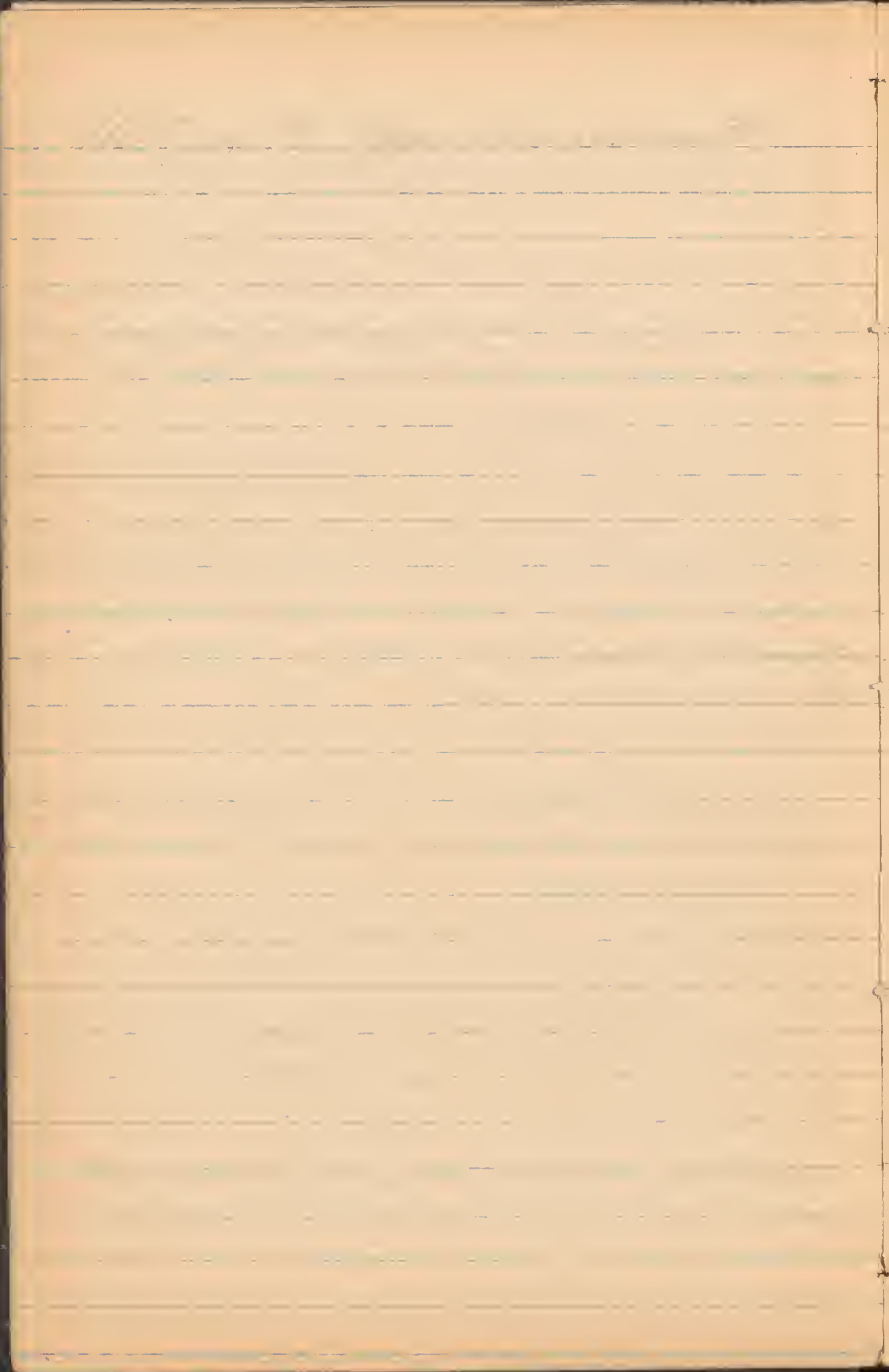
Raw ...

1363

...
...
...
...

1364

...
...
...
...



30

P. concolor

at the bottom of the
substratum

1306

at the bottom of the 15' to 20' thick
substratum

1307

at the bottom of the substratum

1308

at the bottom of the substratum
same as 1307.

1309

at the bottom of the substratum
same as 1307.

1862
The first of the year was very cold
and the snow was very deep.

1360-

Handwritten notes

1370

Handwritten notes

1371

Handwritten notes

1372

Handwritten notes

1373

Handwritten notes

1374

Handwritten notes

2000 - 1900

1378

1878
The first of the year - the
first - just in the

1379

1879
The first of the year - the
first - just in the

1380

1880
The first of the year - the
first - just in the

1381

1881
The first of the year - the
first - just in the

1382

1882
The first of the year - the
first - just in the

1383

1883
The first of the year - the
first - just in the

[Faint, illegible handwriting]

1381

from 6000' to 7000' alt
abundant at upper edge of forest -
and above this.

1382

At nearly prostrate in 5000'
to 6000' alt - fls. rose decussate in
midline of petal. Stam 8 (number
inconstant?) Sig 3-lobed

1383

Asplenium

1384

Asplenium - alt 6000'
Common in wet places
along stream banks

1386

Asplenium - alt 6000'
Common in wet places
along stream banks

1385

Asplenium - alt 6000'
Common in wet places
along stream banks

J. M. Smith -

1387

Commence at ...

1388

...

1389

...

1390

...

1391

...

See 1422

1392

...

1393

...

1394

...

1870

1000 ...
... ..
... ..

1000 ... *marifolium*

... ..
... ..
... ..

1000 ...

... ..
... ..
... ..

1000 ...

... ..
... ..

1000 ...

... ..
... ..

1000 ...

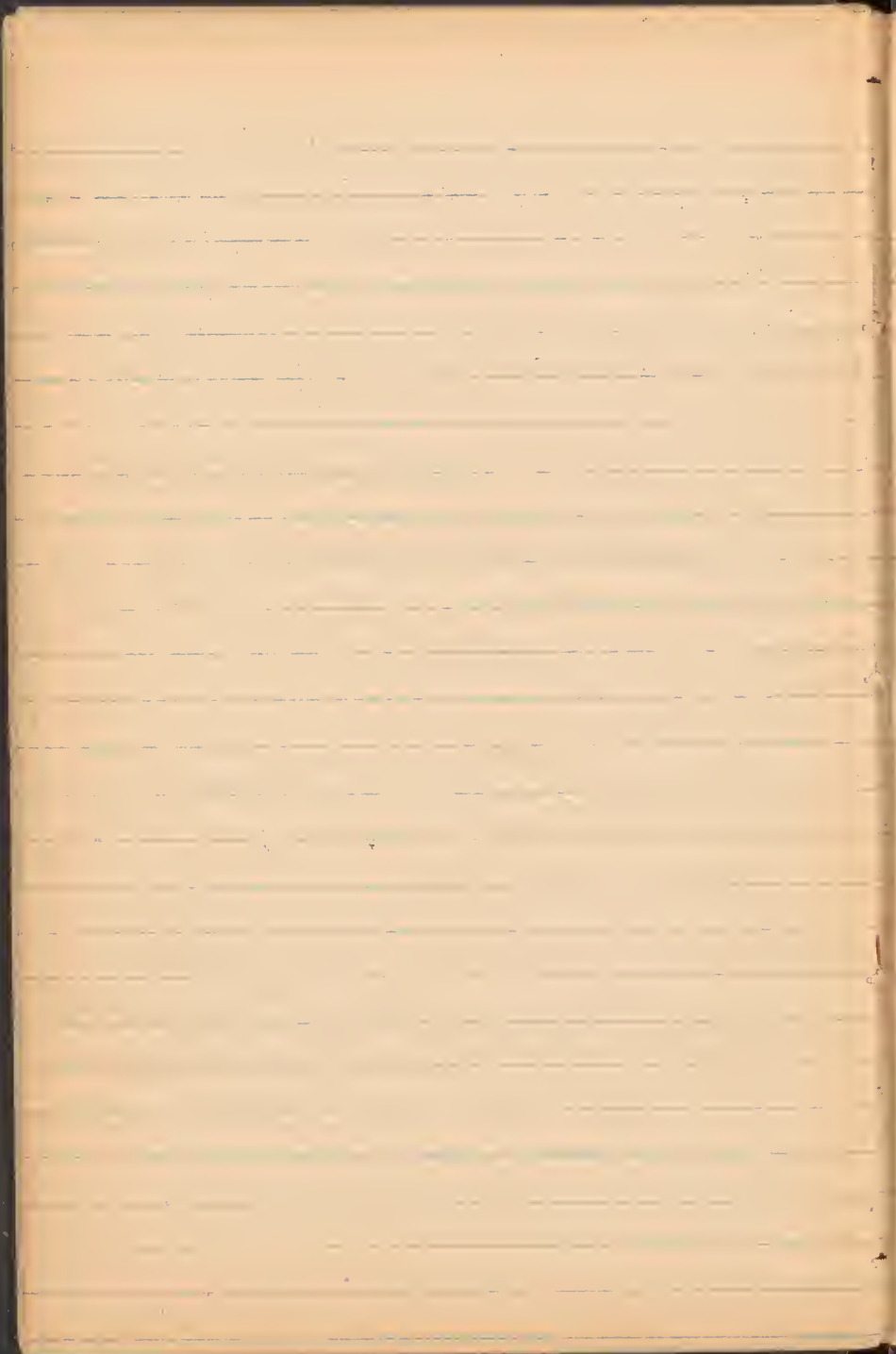
... ..
... ..

1000 ...

... ..
... ..

1000 ...

... ..
... ..



10th Feb

July 1880
The first of the month
I went to the
Linnets

July 1880
The first of the month
I went to the
Linnets







