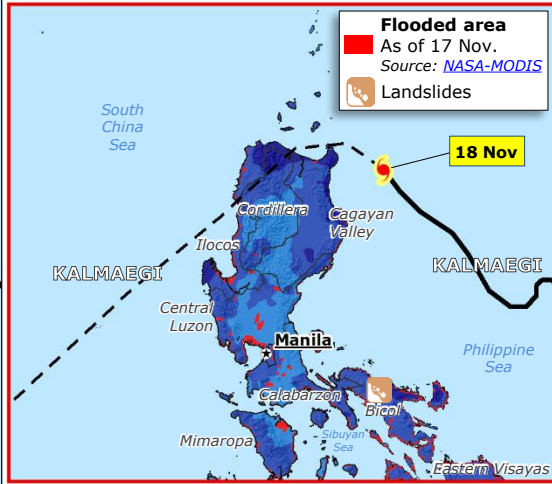
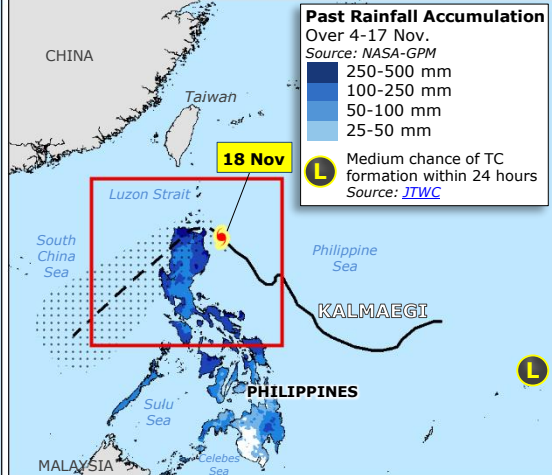
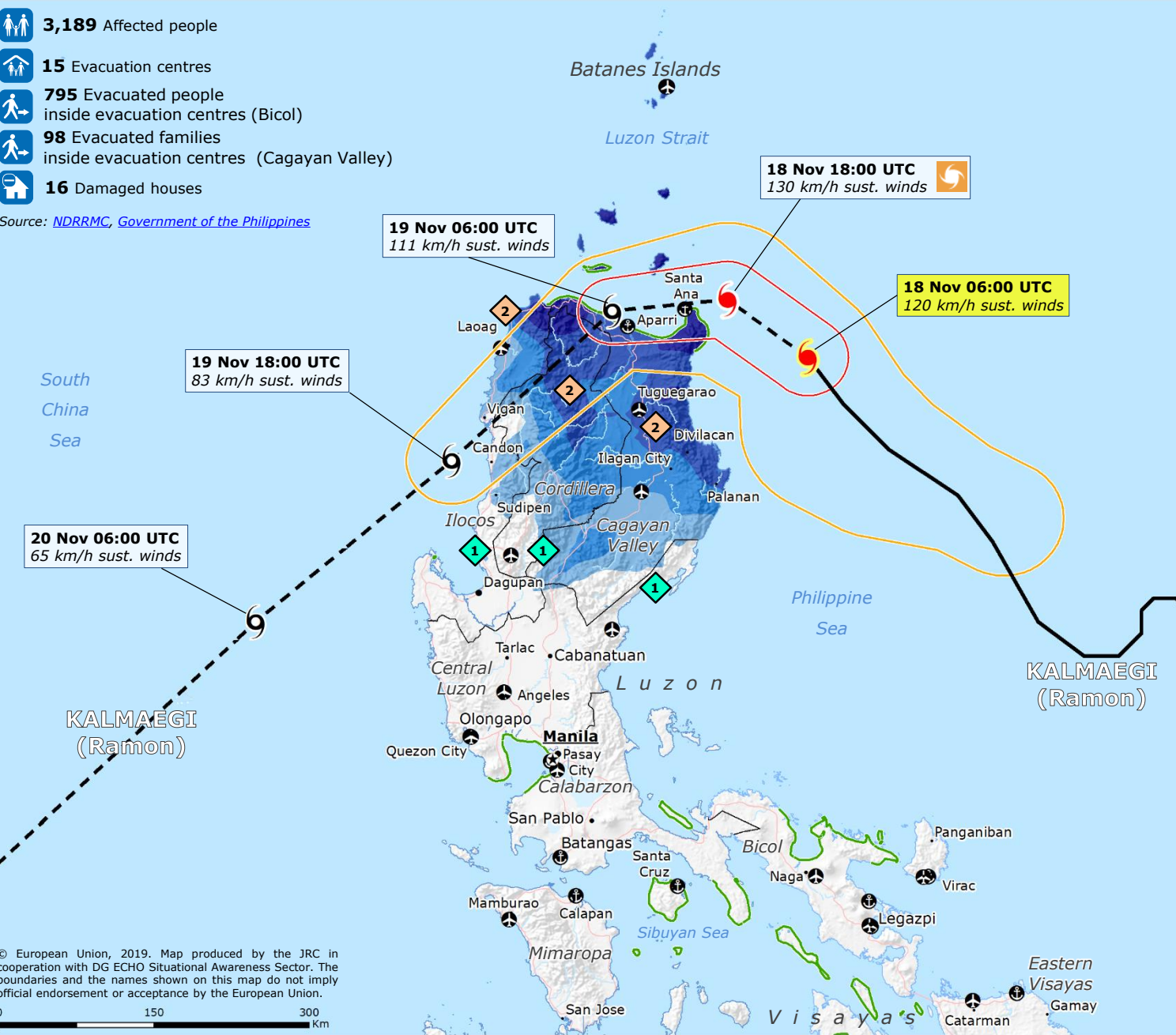


Philippines | Tropical Cyclone KALMAEGI (RAMON)

- 3,189** Affected people
- 15** Evacuation centres
- 795** Evacuated people inside evacuation centres (Bicol)
- 98** Evacuated families inside evacuation centres (Cagayan Valley)
- 16** Damaged houses

Source: [NDRRMC](#), [Government of the Philippines](#)



TROPICAL CYCLONE (TC)
Source: [GDACS](#), [JTWC](#)

- Current position
- Past track
- Forecast track

Intensity

- 63-118 Km/h
- >118 km/h

TC uncertainty cone

Wind buffer

- > 118 Km/h
- 93-118 Km/h

STORM SURGE
Source: [JRC](#), [GDACS](#)

- 0.1 - 1 m

3-DAYS RAINFALL FORECAST (mm)
Source: [JRC](#), [ECMWF](#)

- 250-500
- 100-250
- 50-100
- 25-50

- Tropical Storm Signal #1
- Tropical Storm Signal #2

Source: [PAGASA](#)

- [GDACS](#) Orange Alert
- Region Boundary
- Main Port
- Main Airport

© European Union, 2019. Map produced by the JRC in cooperation with DG ECHO Situational Awareness Sector. The boundaries and the names shown on this map do not imply official endorsement or acceptance by the European Union.