

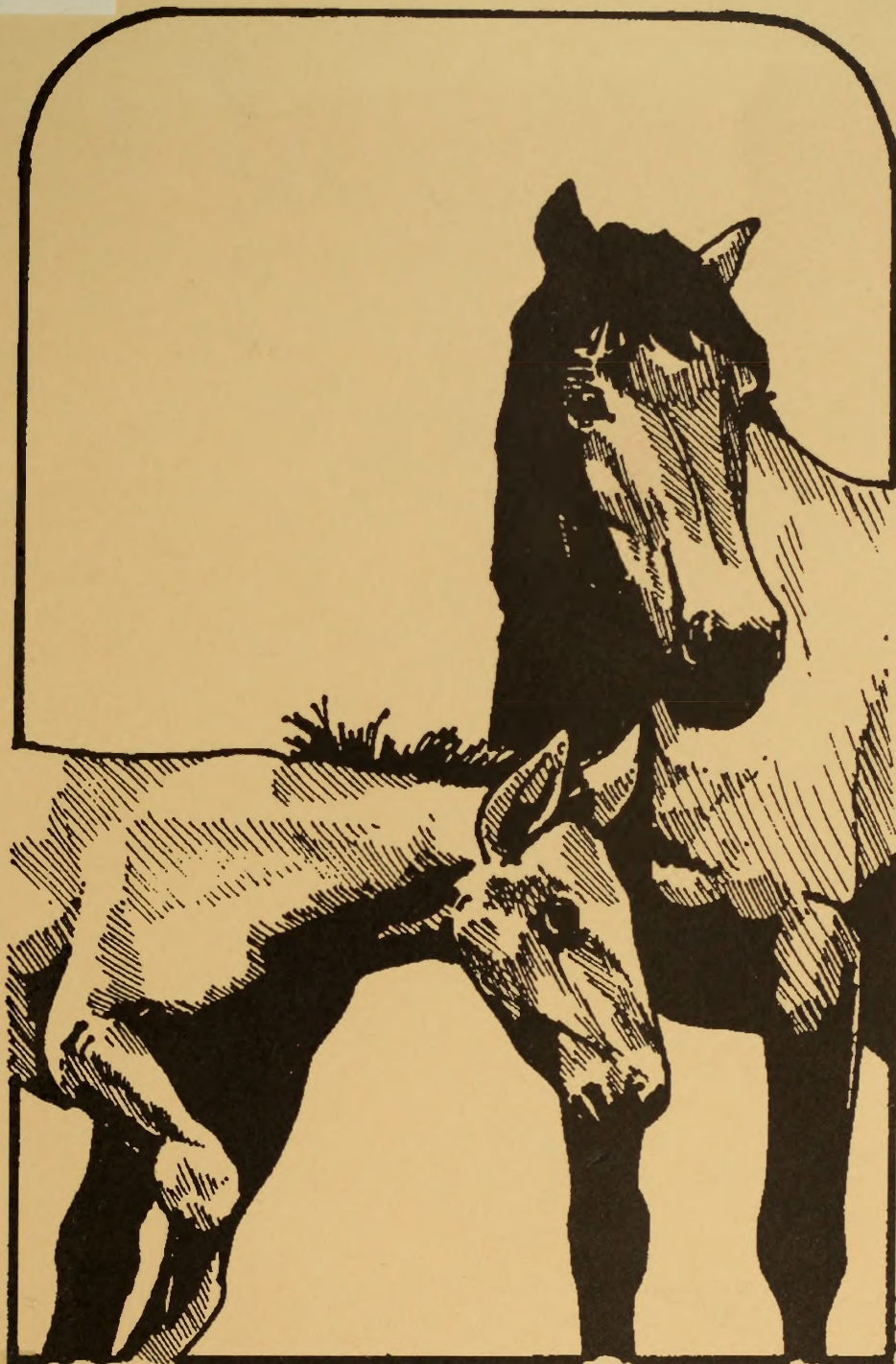


# BUREAU . OF . LAND . MANAGEMENT NEVADA

BLM LIBRARY



88027854



# LEGEND

SF  
284  
.U5  
L434  
1991



# 23991438

ID 86627854

SF  
284  
.45  
L434  
1991

## AN ACT OF CONGRESS

"Congress finds and declares that wild free-roaming horses and burros are living symbols of the historic and pioneer spirit of the West; that they contribute to the diversity of life forms within the Nation and enrich the lives of the American people..."

(Public Law 92-195, December 15, 1971)

BLM LIBRARY  
SC-653, BLDG. 50  
DENVER FEDERAL CENTER  
P. O. BOX 25047  
DENVER, CO 80225-0047

BLMNVGI9000324700

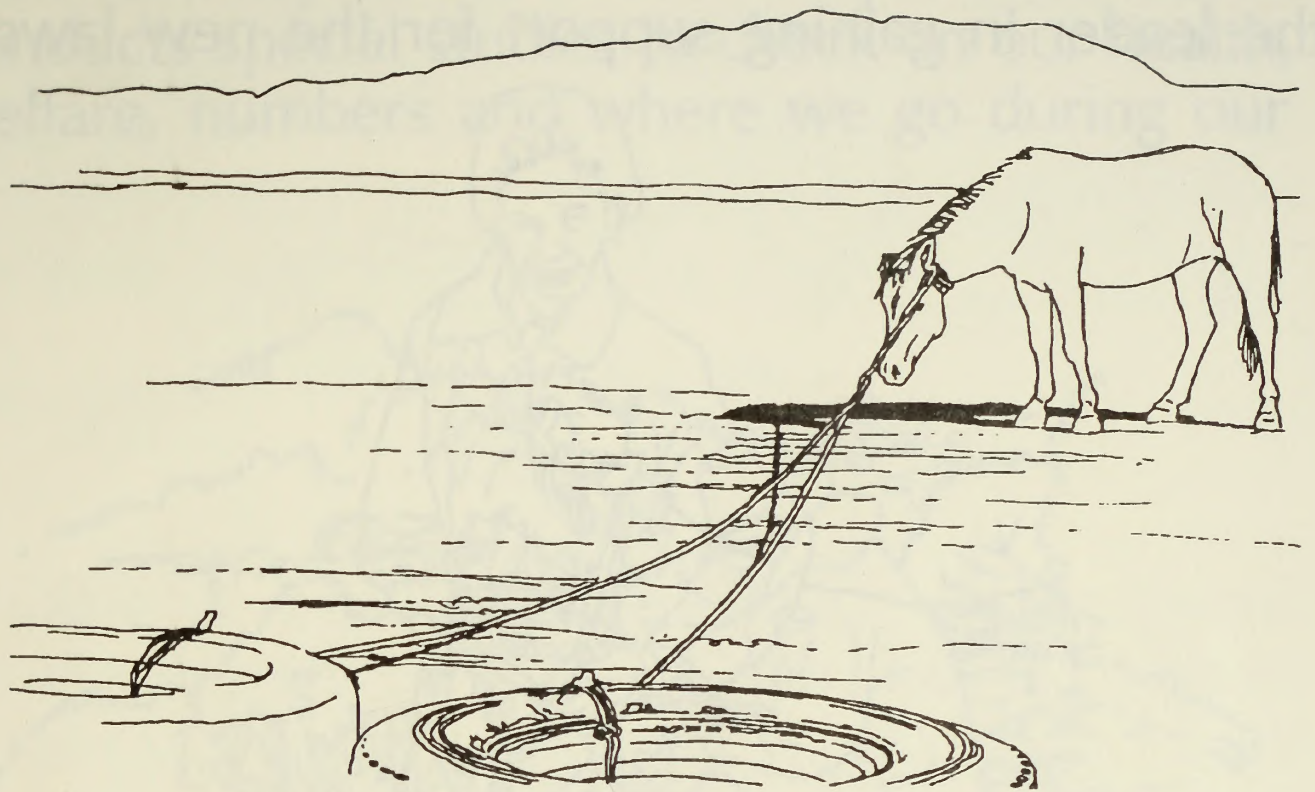




Hi! I'm one of America's adopted wild horses. Have you ever wondered how my wild horse friends and my wild burro cousins came to live on your public lands? Well, it all started a long time ago when some of my ancestors were brought to America by the Spaniards in 1700. My great, great grandparents arrived in the West with the early settlers and miners.



After a while some of them decided they wanted to be free so they escaped to the wild where some 30,000 of us have found a home today. Humans have always been interested in the commercial value of my friends and relatives since we took up living wild and free on the public lands. With the invention of motorized



vehicles, humans were able to exploit my ancestors for work animals or cavalry mounts and by selling captured animals for profit. Often times in the past, when humans wanted to capture some of my ancestors, the way in which they captured us caused injuries and was not very humane. These abuses caused the American public to rally support for my friends and me. Eventually, this public support caused Congress to pass two major laws giving us special protection.

Velma "Wild Horse Annie" Johnston of Reno was the leader in gaining support for the new laws.



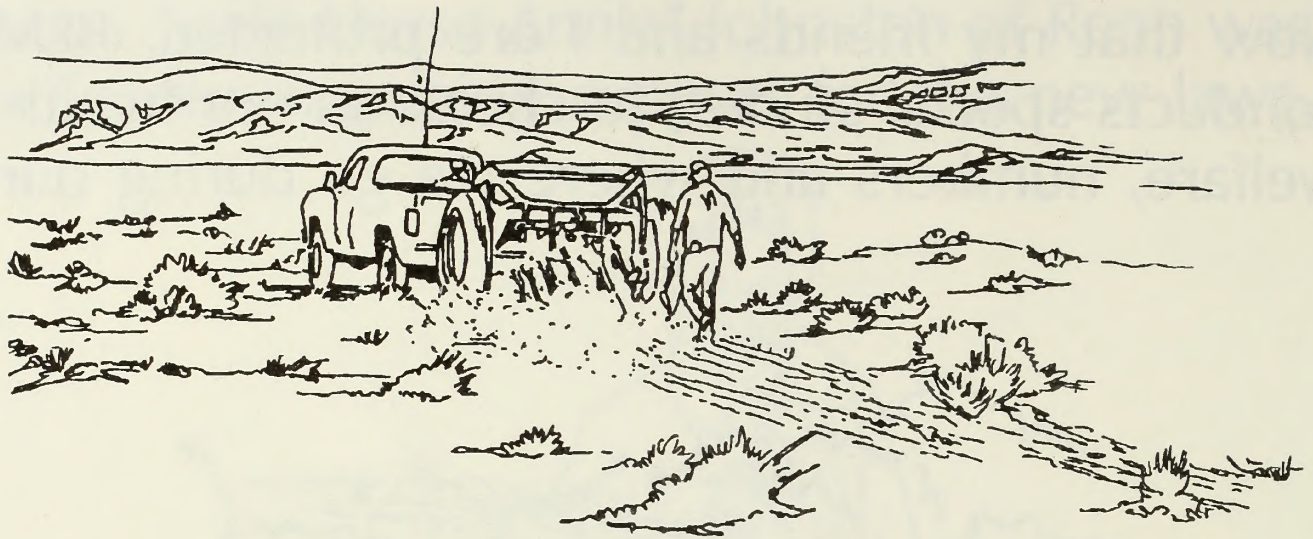
The first law came in 1959 and prohibited the use of aircraft in capturing wild horses and burros. The second law came in 1971 and gave wild horses and burros special protective status on lands managed by the Bureau of Land Management (BLM) and the US Forest Service.



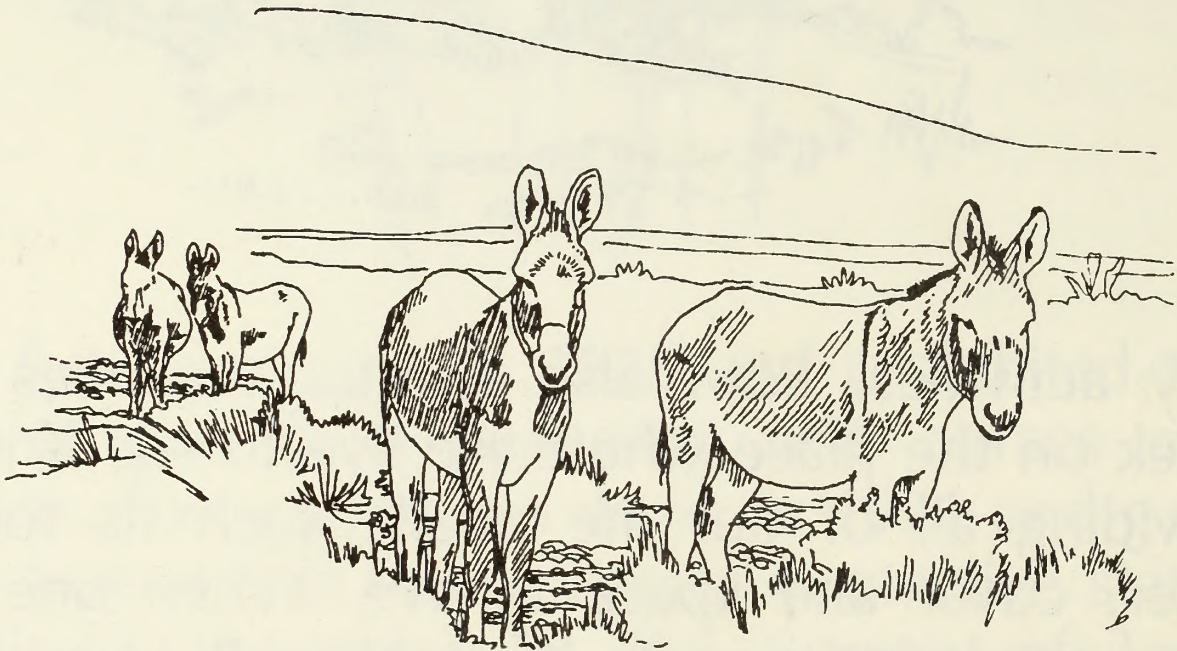
Now that my friends and I are protected, BLM conducts special studies to check on our health, welfare, numbers and where we go during our



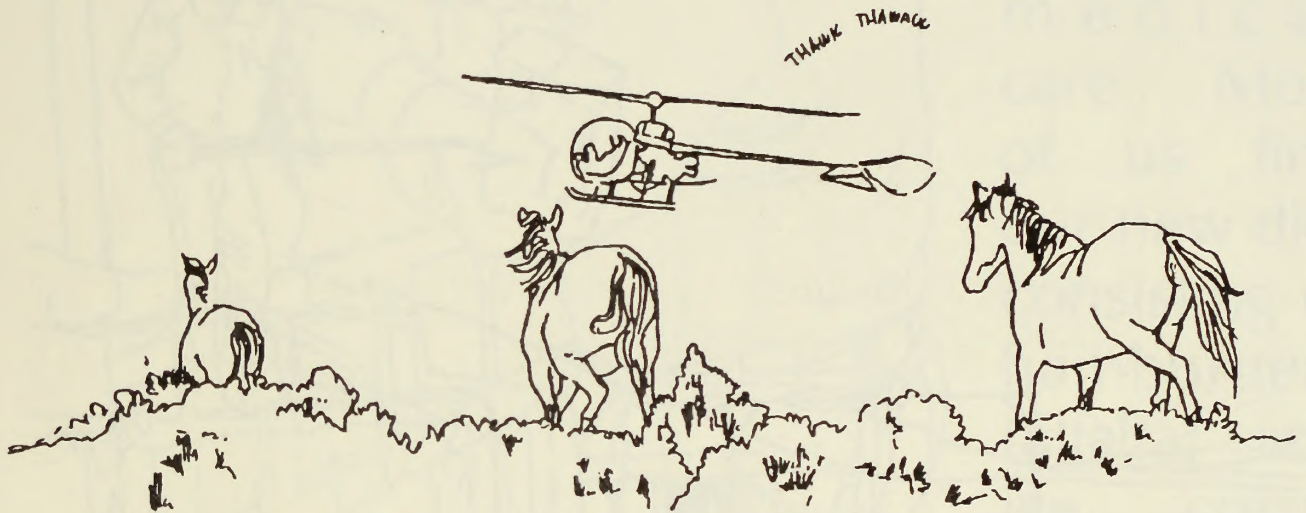
daily activities. BLM also conducts studies to check on the place where we live to see if it is providing all of our life needs such as food, water, cover and space to live. When one of these needs is found to be lacking, BLM makes plans to correct the problems.



Sometimes the problem can be fixed by making more food available by planting new seeds in the ground to grow more food-producing plants for us to eat.

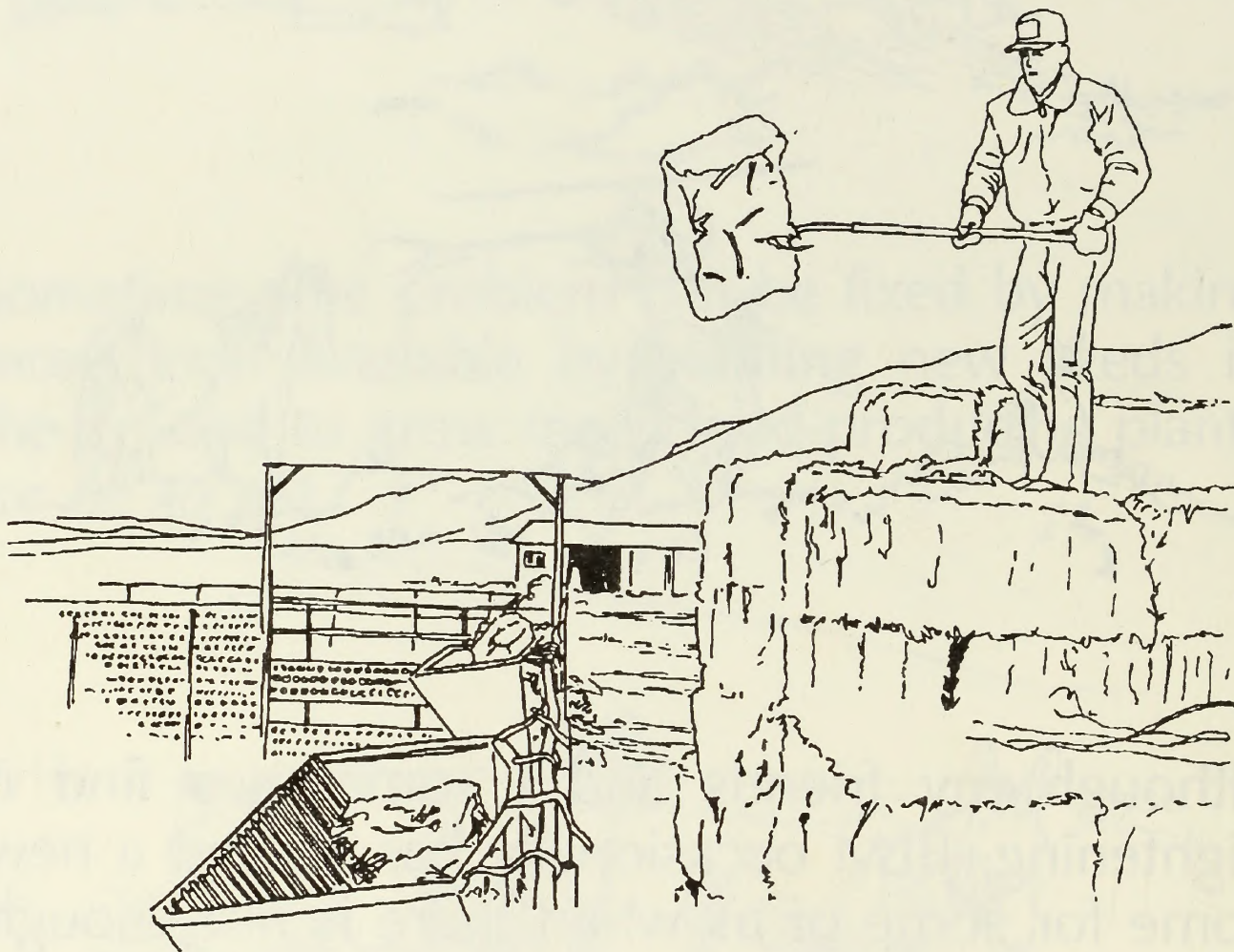


On other occasions, the improvement of water sources will allow us to drink where there was little or no water before, or to increase our ability to find food in areas we had avoided because there was nothing to drink.



Although my friends and I sometimes find it frightening, BLM occasionally has to find a new home for some of us when there is not enough food or water for us and all of the other animal species which share the public lands. While we always run from the helicopter and hate to leave old friends, our fears are mostly due to the noise the helicopter makes. We realize that the

capture of a few of us will make more food and water available for all of the animals that remain.



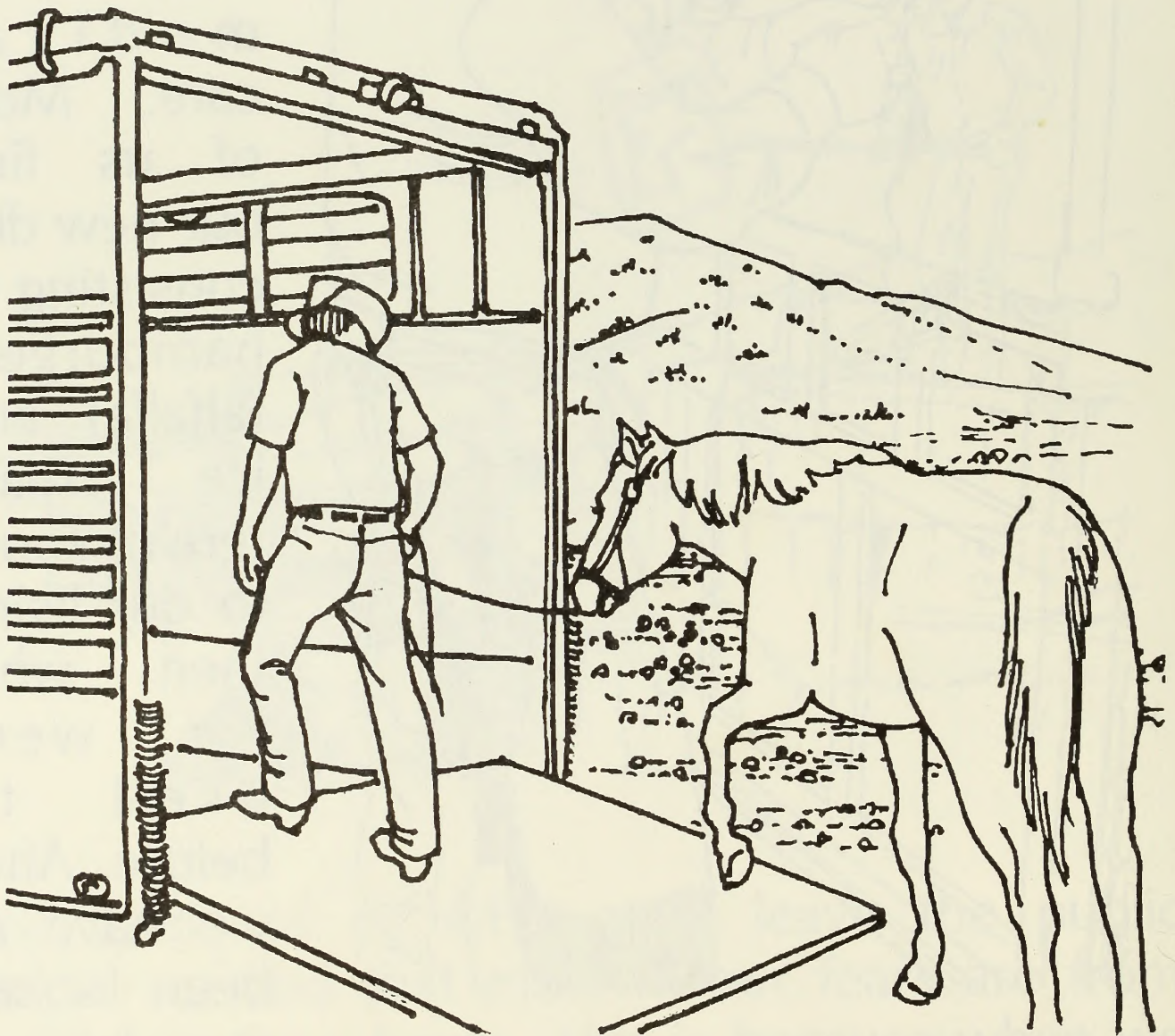
For those of us who must leave the public lands, we find that most of our fears are from moving to new home. This is because when we get to our new home, we find a lot of very



smart people there who know how to give us proper food, water and medical care. Most of us find our new diet consisting of hamburgers (alfalfa) and ice cream (grain) more to our liking than what we were used to before. After we have all been looked at by a

doctor and given plenty of time to rest and get

accustomed to our new environment, we are ready to consider a new home more seriously. It is at this time that BLM brings a bunch of people around for us to select one with which we would like to live.



When we finally decide, we get in the back seat of the family car (horse trailer) and head for home. As you already know, making new friends can be very hard. But once we make up our minds, we have made a friend for life.

When we finally decided to get in the tank we  
of the study conditions and the fact that  
of the study. Since we had never before  
to be very hard but we were not out  
minds we have made a breakthrough of





HELP THE HORSE FIND HIS WAY TO THE WATER TROUGH.

The following activity pages are included for your entertainment.

Can you name the parts of a horse?

Test your skills at Cryptocapture!

Can you find your way through the maze?

Lasso those words in Word Roundup!

Hone up on your crossword puzzle abilities!

Try naming the parts of a horse...

.....and discover what the symbols on Indian War Horses meant.

*Have fun!*

# LASSO THOSE WORDS IN THE.....

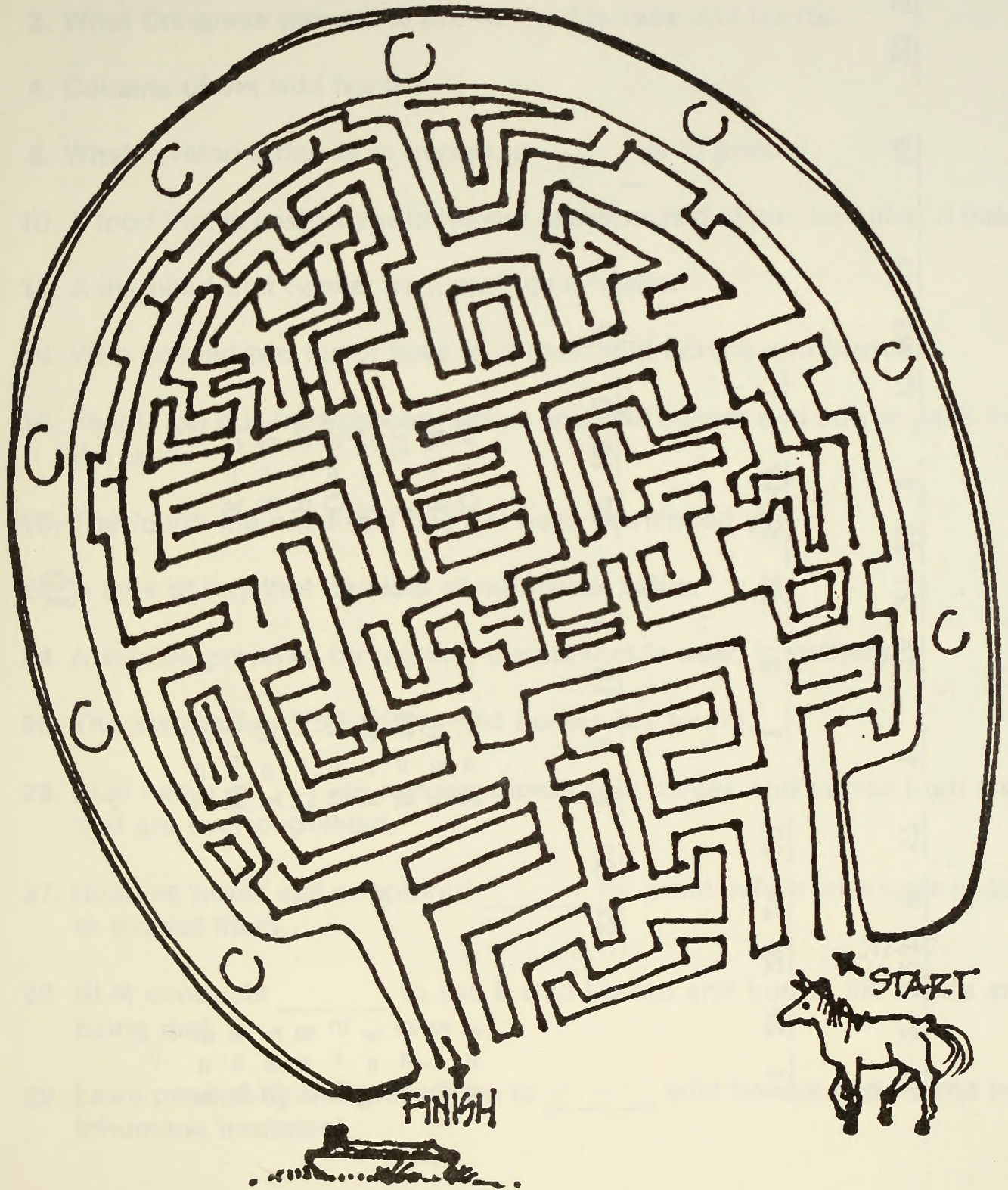
## WORD ROUNDUP

C E N S U S Z T E O M D B C  
G Q Y S T N E M E V O M D I  
F O R A G E O F S T A L K H  
E S D R W L N U S P G S G E  
C E F G N I M A O R E E R F  
U S X R V V O C R G S X O I  
N R B J K E R J R P T R W L  
D O L L Y S T L U W R A T D  
I H A B I T A T B S U T H L  
T D D X T O L P D P C I U I  
Y L E A F C I E L I T O O W  
U I A G R K T I I M U E S P  
P W O I N T Y W W S R M Z T  
G N I R O T I N O M E G A H

FREE-ROAMING  
LIVESTOCK  
HABITAT  
CENSUS  
MONITORING  
FECUNDITY  
WILD BURROS  
MOVEMENTS  
AGE STRUCTURE  
STALK

GRASS  
MORTALITY  
WILDLIFE  
FORAGE  
PLOT  
WILD HORSES  
FOAL  
SEX RATIO  
BLADE  
GROWTH

HELP THE HORSE FIND HIS WAY TO THE  
WATER TROUGH...



TEST YOUR SKILLS AT CRYPTOCAPTURE!!!

1 2 23 6 17 1 18 21 22 2 13 23 24 7 12 23 24

11 25 24 24 23 1 2 23 6 17 1

22 21 8 21 15 3 22 12 3 12 15 2  
!

A = 1  
D = 2  
G = 3  
J = 4  
M = 5  
P = 6  
S = 7  
V = 8  
Y = 9

B = 11  
E = 12  
H = 13  
K = 14  
N = 15  
Q = 16  
T = 17  
W = 18  
Z = 10

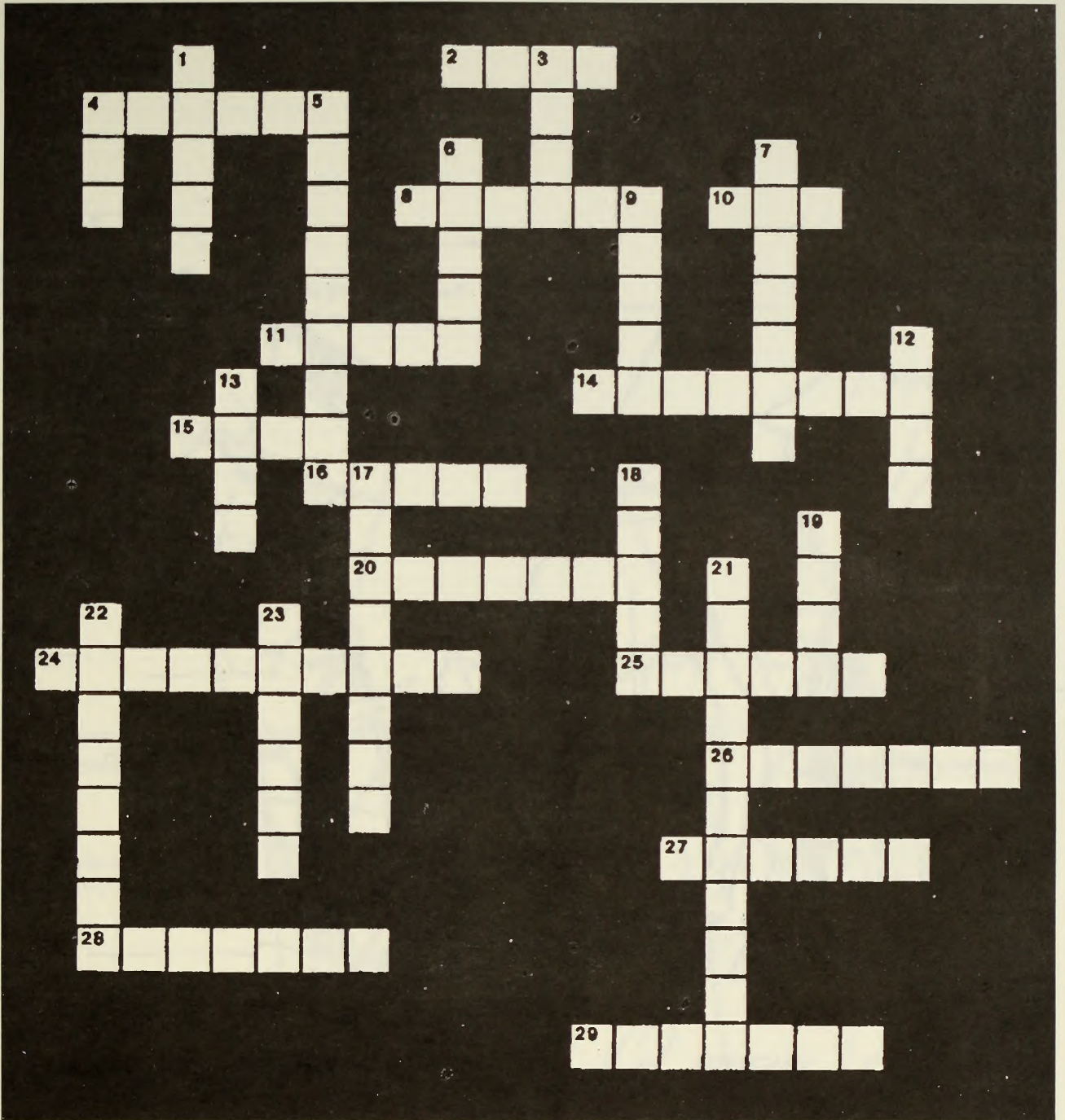
C = 19  
F = 20  
I = 21  
L = 22  
O = 23  
R = 24  
U = 25  
X = 26

## ACROSS

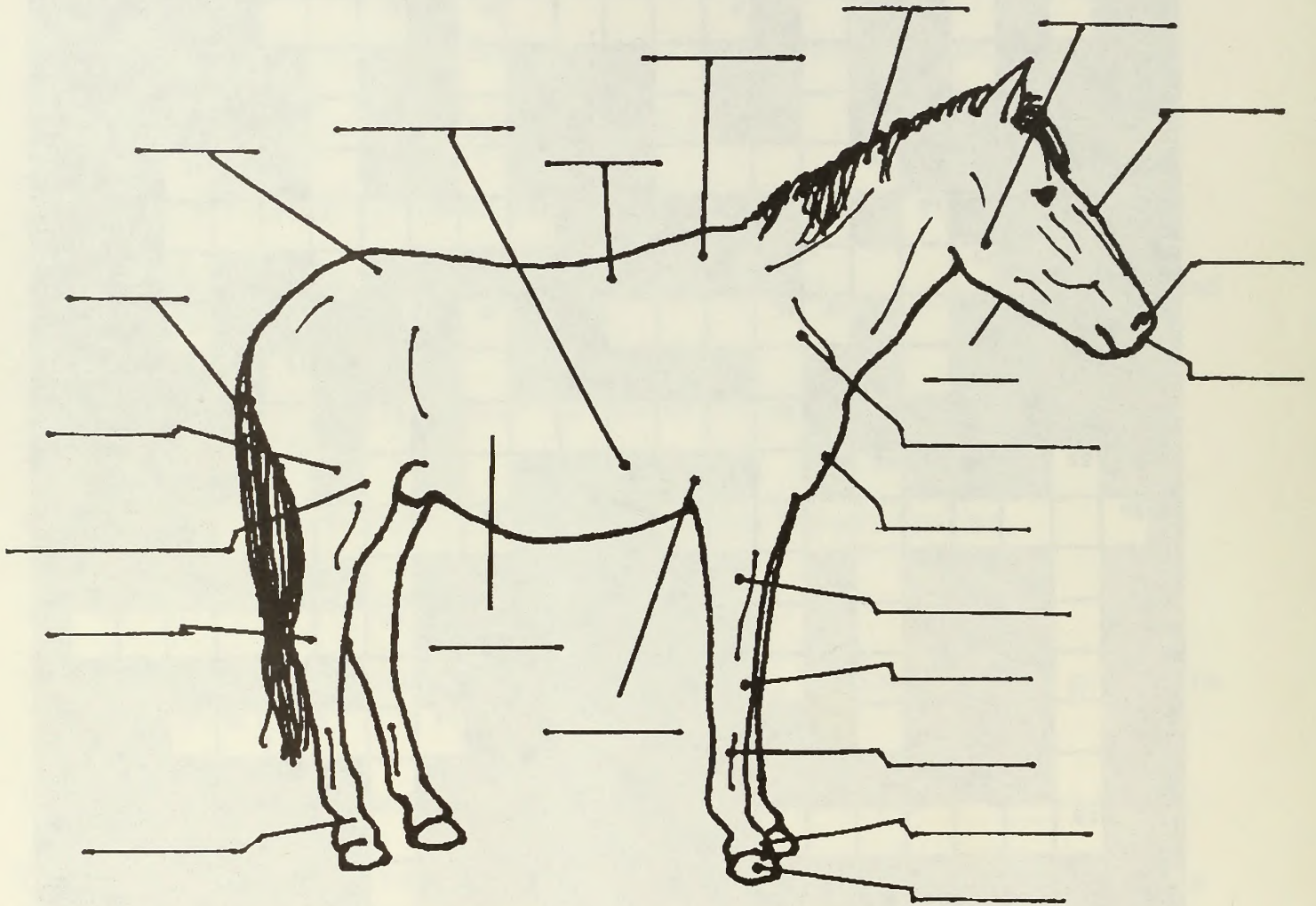
2. What Congress passed to protect wild horses and burros.
4. Cousins of the wild horses.
8. What a veterinarian is to horses, a \_\_\_\_\_ is to people.
10. A food that is eaten by wild horses and burros that can be cut and baled.
11. A life need that comes from springs or wells.
14. Who passed two major laws to protect wild horses and burros?
15. People get this from grocery stores and wild horses and burros get it from the land.
16. The fourth life need that has not been mentioned yet.
20. A type of hay that has lots of nutritional value.
24. A vehicle powered by rotating blades that is used in gathers.
25. The state where 75% of the wild horses are found.
26. BLM has a \_\_\_\_\_ to remove excess wild horses and burros from areas that are over-populated.
27. Humans would sell a captured \_\_\_\_\_ for profit before laws were passed to protect them.
28. BLM conducts \_\_\_\_\_ to see if wild horses and burros life needs are being met.
29. Laws passed by Congress were to \_\_\_\_\_ wild horses and burros from inhumane treatment.

## DOWN

1. What people do with their animals after they adopt them.
3. Part of the United States where wild horses and burros roam free.
4. Three letter abbreviation for Bureau of Land Management.
5. Who brought horses to America in the 1700s?
6. One of a horse's life needs that provides shade.
7. The BLM uses helicopters and portable corrals to \_\_\_\_\_ wild horses and burros.
9. An activity that pits cowboys against animals that wild horses are not allowed to compete.
12. Four letter abbreviation for the United State Forest Service.
13. What a horse walks on.
17. The BLM makes more food available by \_\_\_\_\_ seeds in the ground to grow more food.
18. A mixture of oats, corn, barley and molasses is called \_\_\_\_\_.
19. Animals that roam free and are not domesticated are considered to be \_\_\_\_\_.
21. Horses need time to get used to their new \_\_\_\_\_ after they are adopted.
22. Early Americans that moved West were called \_\_\_\_\_.
23. Animals that were used a great deal for travel before motorized vehicles.



# CAN YOU IDENTIFY THE "PARTS" OF THIS WILD HORSE?



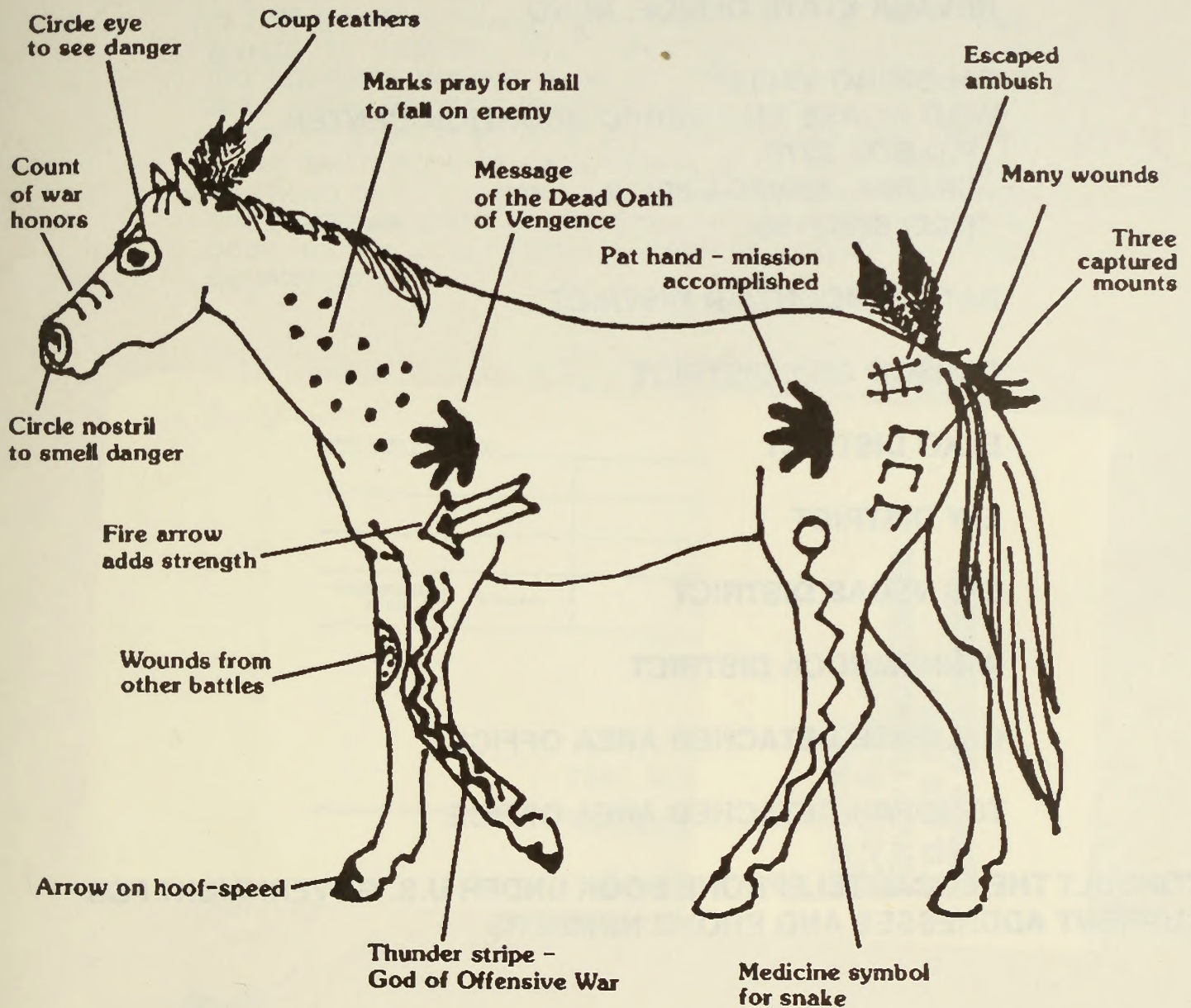
PASTERN  
CANNON  
FOREARM  
STIFLE JOINT  
CHEEK  
JAW  
KNEE  
RUMP

RIB CAGE  
TAIL  
MANE  
THIGH  
NOSTRIL  
SHOULDER  
ELBOW  
BACK

CORONET  
HOOF  
HOCK  
FACE  
MUZZLE  
CHEST  
FLANK  
WITHERS



# DID YOU KNOW INDIANS PAINTED THEIR HORSES TO RECORD THEIR BRAVERY IN BATTLE?



## MARKINGS USED ON PRIZED WAR HORSES AND BUFFALO HORSES

Source: AMERICAN INDIAN HORSE REGISTRY, INC. Rt. 3 Box 64 Lockhart, Texas 78644

**FOR FURTHER INFORMATION, CONTACT THE BLM WILD HORSE AND BURRO SPECIALIST IN THE FOLLOWING AREAS:**

**NEVADA STATE OFFICE, RENO**

**PALOMINO VALLEY  
WILD HORSE AND BURRO ADOPTION CENTER  
P.O. BOX 3270  
SPARKS, NEVADA 89432  
(702) 673-1150**

**BATTLE MOUNTAIN DISTRICT**

**CARSON CITY DISTRICT**

**ELKO DISTRICT**

**ELY DISTRICT**

**LAS VEGAS DISTRICT**

**WINNEMUCCA DISTRICT**

**CALIENTE DETACHED AREA OFFICE**

**TONOPAH DETACHED AREA OFFICE**

**CONSULT THE LOCAL TELEPHONE BOOK UNDER U.S. GOVERNMENT FOR CURRENT ADDRESSES AND PHONE NUMBERS**

**FOR A SHEET PROVIDING THE ANSWERS TO THESE PUZZLES, CONTACT YOUR LOCAL WRANGLER.**

In 1988 the BLM's Nevada State Director formed several task groups to examine the state's wild horse and burro management program. In March 1989, the Wild Horse and Burro Public Relations Initiative Group began to formulate action on positive efforts to enhance management of wild horses and burros in Nevada. Serving on the committee were wild horse and burro specialists, public affairs representatives and a graphics artist. It was from this committee that this activity book and an accompanying teacher's guide have been developed.

MEMBER'S CARD

854

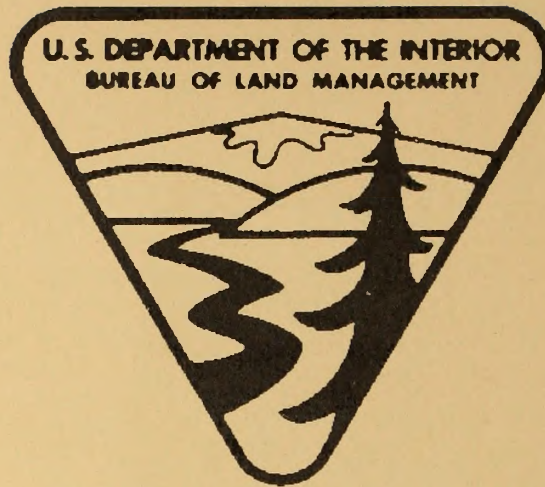
434 1991

DATE RETURNED	OFFICE	

(Continued on reverse)

BLM LIBRARY  
 SC-653, BLDG. 50  
 DENVER FEDERAL CENTER  
 P. O. BOX 25047  
 DENVER, CO 80225-0047





The Bureau of Land Management is responsible for the balanced management of the Public Lands and resources and their various values so that they are considered in combination that will best serve the needs of the American people. Management is based upon the principles of multiple-use and sustained yield, a combination of uses that takes into account the long term needs of future generations for renewable and non-renewable resources. These resources include recreation, range, timber, minerals, watershed, fish and wildlife, wilderness and natural, scenic, scientific and cultural values.