

SECRET  
SECURITY INFORMATION

311.4

*Carriers + Messengers*

*1 Jan 49 thru 31 Dec 50*

G-4 Adm File

SECURITY INFORMATION

SECRET



G-4 ROUTING

- AC/SGA
- SAC/SGA
- EXECUTIVE
- INFO
- OPRE
- SUPPLY
- PETROLEUM
- KEA
- ADMIN

GENERAL HEADQUARTERS  
FAR EAST COMMAND

OUTGOING MESSAGE

TO-M ELR:LAH:WG:her

*Secret*

*31/1*

271417

*Paraphrase not required. Consult cryptocenter before  
transmission. Record of clas carried hereon per para  
AR 380-5.15 Nov 49.*

FROM: CINCFE TOKYO JAPAN

TO : CG ARMY EIGHT KOREA . . . . . OPERATIONAL IMMEDIATE  
CG FEAF TOKYO JAPAN . . . . . OPERATIONAL IMMEDIATE (COURI

INFO: CG JLCOM YOKOHAMA JAPAN . . . . . OPERATIONAL IMMEDIATE (COURI  
CG 2D LOG COMD KOREA . . . . . OPERATIONAL IMMEDIATE  
CG 3D LOG COMD KOREA . . . . . OPERATIONAL IMMEDIATE  
CG 1503D ATW MATS HANEDA JAPAN. OPERATIONAL IMMEDIATE (COURI

**C x 52179**

Effective 28 Dec 50 the Army Eight GHQ Courier flight is changed to eliminate stop at K-9 on return flight. New schedule as follows:

Depart		Arrive	
Haneda	0900 I	K-9	1330 I
K-9	1430 I	K-2	1515 I
K-2	1615 I	Haneda	2045 I

*G-4*

OFFICIAL:

APPROVED:

K. B. BUSH  
Brigadier General, USA  
Adjutant General

H. T. MILLER  
Colonel TC  
Transportation Officer

Distribution: ROK, All Spec & Tech Svcs, Trans (5 cys)

MEMO FOR RECORD:

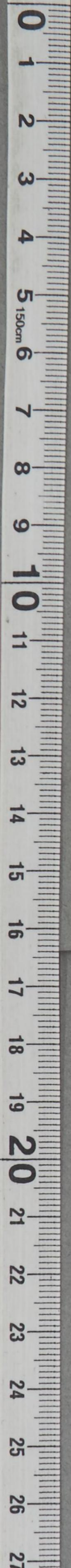
27 December 1950

1. Instant msg eliminates GHQ Courier stop at K-9 on return trip. This stop not needed by 8th Army, G-4, AG Mail & Records.
2. Arrangements to effect above change made by Maj Aaron, FEAF Opns.
3. Coordination: 8th Army, Lt Col Graves; G-4, Lt Col Ruhlen; AG, Maj Barford.
4. Action initiated and completed on Trans Jo # \_\_\_\_\_.

W.G. WV 26-7965

*Secret*





*[Faint, mostly illegible text and markings on aged paper]*

RECEIVED  
27 DEC  
4  
GHQ

*[Handwritten signature or initials]*



GENERAL HEADQUARTERS  
FAR EAST COMMAND

OUTGOING MESSAGE

TO-1 ELR:LAH:G:bcd

G-6 PRO  
A C 8 6  
DA C 1 8  
EXCISE  
C+RE  
SUPPLY  
PETROLEUM  
K 1 7 A  
ADMIN

*Secret*

*311.4*

260015

FROM: CINCFE TOKYO JAPAN

TO : CG ARMY EIGHT KOREA . . . . . OPERATIONAL IMMEDIATE (COURIER)  
 CG X CORPS KOREA . . . . . OPERATIONAL IMMEDIATE  
 CG FEAF TOKYO JAPAN . . . . . OPERATIONAL IMMEDIATE (COURIER)

INFO: CG JLCOM YOKOHAMA JAPAN . . . . . OPERATIONAL IMMEDIATE (COURIER)  
 CG 2D LOG COMD KOREA . . . . . OPERATIONAL IMMEDIATE  
 CG 3D LOG COMD KOREA . . . . . OPERATIONAL IMMEDIATE  
 CG 1503D AT MATS HANEDA JAPAN. OPERATIONAL IMMEDIATE (COURIER)

C x 52052

Effective 26 Dec 50 the X Corps GHQ Courier flight is discontinued. Effective 26 Dec 50 the Army Eight Courier flight is changed to include stop at K-9 with schedule as follows:

Depart Haneda - 0900 I  
 Arrive K-9 - 1330 I  
 Depart K-9 - 1430 I  
 Arrive K-2 - 1515 I  
 Depart K-2 - 1615 I  
 Arrive K-9 - 1700 I  
 Depart K-9 - 1800 I  
 Arrive Haneda - 2230 I

*H-4*

OFFICIAL:

APPROVED:

K. B. BUSH  
Brigadier General, USA  
Adjutant General

*C. Woods*  
H. T. MILLER  
Colonel TC  
Transportation Officer

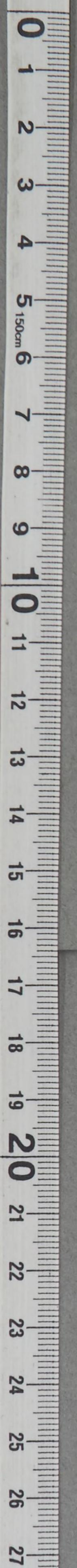
Distribution: ROK, All Spec & Tech Svcs, Trans (5 cys)

MEMO FOR RECORD: 25 December 1950

1. Instant msg implements request from G-4, GHQ (LtCol White) that X Corps GHQ Courier flight be discontinued and that the Army Eight Courier flight be changed to include K-9,
2. Arrangements to effect above change made by Maj Trotter, FEAF Opns.
3. Routed through G-4 for approval prior to dispatch.
4. Action initiated and suspended on Trans Jo \_\_\_\_\_ until 31 Dec 50 pending G-4 approval.

*Secret*

WG W/3 26-7965  
*WMW*  
19603





DECLASSIFIED

Authority NND975029



08 09 10 11 12 13 14 15 16 17 18 19 20 21 22 23 24 25 26 27  
↑  
RECEIVED  
26 DEC 1950  
G-4  
GHQ



G-4 HQ

AC/SG

DAC/SG

EXECUTIVE

P+O

C+RE

SUPP

PETROL

KEA 1.

ADMIN

GENERAL HEADQUARTERS  
FAR EAST COMMAND

**SECRET**

CHECK SHEET

311.4

File No. \_\_\_\_\_ Subject: Courier Plane to X Corps  
Note From: Secy Gen Staff To: Transportation Date: 10 November 1950

The Chief of Staff desires that the courier plane to X Corps be instructed to land at YONPO (K-27) commencing 11 November 1950. The X Corps CP opens at HAMHUNG 11 November 1950.

cc: -G-4- - - - -H.T.M.- - - - -

2. From: Trans 0 To: Secy Gen Staff Date: Capt Pass 26-6346

The courier plane to X Corps will land at Yonpo (K-27) commencing 11 November 50.

-H. T. M.- - - - -

TO-M ELR:LAH:DKD:GLB:b  
11 November 1950

MEMO FOR RECORD:

1. C/N 1 from Secy, General Staff dated 10 Nov 50 to Trans Sec. Stated desires that the courier plane to X Corps be instructed to land at Yonpo (K-27) commencing 11 Nov. 50.
2. MATS has been instructed verbally to accomplish this change and Col Booth MATS states that it will be accomplished. In fact, the flight on 11 November 50 which departed at 0836 will land at K-27.
3. Instant msg informs Secy, General Staff that plane will land at Yonpo commencing 11 Nov. 50.
4. Action completed on Trans Jo. No. 3248.

G.L.B. 26 26-6346

RECEIVED  
NOV 11 1950  
DHD

**SECRET**

Major Wilwerding



**SECRET**

GENERAL HEADQUARTERS  
FAR EAST COMMAND

CHECK SHEET

G-4  
AC-2  
BAC-2  
EXECUTIVE  
2+0  
2+2  
File No.  
SUBV  
Note  
PATROL  
K-2  
Admin

From: Secy Gen Staff  
Subject: Courier Plans to X Corps  
Date: 10 November 1950

The Chief of Staff desires that the courier plane to X Corps be instructed to land at YONPO (K-27) commencing 11 November 1950. The X Corps OP opens at HANJUNG 11 November 1950.

--- H.T.M. ---

From: Trans 5  
To: Secy Gen Staff  
Date: 10 Nov 50

The courier plane to X Corps will land at Yonpo (K-27) commencing 11 November 50.

--- H.T.M. ---

TO: M. J. A. D. O. S. 11 November 1950

MEMO FOR RECORD:

1. CNI from Secy, General Staff dated 10 Nov 50 to Trans 50. Stated desires that the courier plane to X Corps be instructed to land at Yonpo (K-27) commencing 11 Nov. 50.
2. MATS has been instructed verbally to accomplish this change and Col Booth MATS states that it will be accomplished. In fact, the flight on 11 November 50 which departed at 0830 will land at K-27.
3. Instant msg informs Secy, General Staff that plane will land at Yonpo commencing 11 Nov. 50.
4. Action completed on Trans 50, No. 2318.

G.I.E. 26-2318

RECEIVED  
7-11 NOV 1950  
HQ  
15 14 13 12 11 10 9 8 7 6 5 4 3 2 1

**SECRET**

Major W. J. Warding

0 1 2 3 4 5 6 7 8 9 10 11 12 13 14 15 16 17 18 19 20 21 22 23 24 25 26



G-4 ROUTING

A C/S G-1

DAC/S G-4

EXECUTIVE

P+O

C+RE

SUPPLY

PETROLEUM

KEA

ADM

FROM:

TO:

INFO:

GENERAL HEADQUARTERS  
FAR EAST COMMAND

OUTGOING MESSAGE TO RLR:LAL:LKL:CLE:tu

CINCPAC TOKYO JAPAN

CG FEAT TOKYO JAPAN . . . . . OPERATIONAL IMMEDIATE

CG MATS 1503D ABU HAREDA AB JAPAN . OPERATIONAL IMMEDIATE

CG 1 CORPS KOREA . . . . . OPERATIONAL IMMEDIATE

*Secret*  
311.4  
111141

C X 68783

Desire that Courier Plane to 1 Corps MATS flight 287-288 land at Yonpo commencing 11 November 50. This cfn's verbal request to 1503d MATS 101830I.

OFFICIAL:

APPROVED:

E. D. BUSH  
Brigadier General, USA  
Adjutant General

H. T. MILLER  
Colonel, TC  
Transportation Officer

Copies to: ROK, G-4 P&O, Trans (5), GHQ UNC IS

MEMO FOR RECORD: 11 Nov 50

C/N 1 from Secy Gen Staff, 10 Nov 50 to Trans Sec desired that courier plane to 1 Corps be instructed to land at Yonpo (K-27) commencing 11 Nov 50 rather than Wonsan (K-25).

2. Verbal instrs were given Lt Col Booth MATS by Capt Bass at 1830I on 10 Nov to make above change.

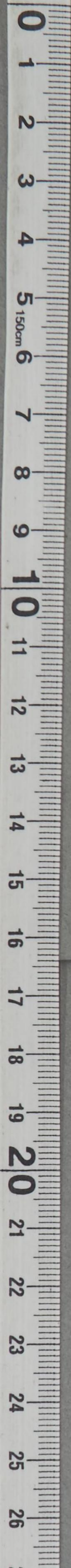
3. Col Booth cfn's that flight would go into K-27 at 1930 on 10 Nov and again at 0800 on 11 Nov.

4. Instant msg's cfn's change and informs all interested agencies of change.

5. Action initiated and completed on T/J\_\_\_\_\_.

Paraphrase not required. Consult cryocenter before decias. Handle as corr of clas carried hereon per pars 17a(1)(2) and 41c(2)(3) and g(1), AR 380-5.15 Nov 49.

*Secret*

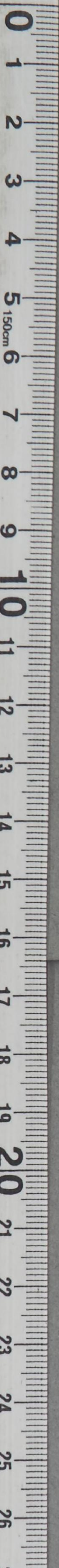




DECLASSIFIED

Authority NND975029

6



RECEIVED  
 12 NOV 1950  
 G-4  
 GHO



GENERAL HEADQUARTERS, FAR EAST COMMAND  
ADJUTANT GENERAL'S OFFICE  
RADIO BRANCH

G-4 ROUTING

AG 564	<input checked="" type="checkbox"/>
DA 67564	<input checked="" type="checkbox"/>
EXECUTIVE	<input checked="" type="checkbox"/>
INFO	<input checked="" type="checkbox"/>
CSRS	<input checked="" type="checkbox"/>
SUPPLY	<input checked="" type="checkbox"/>
PETROLEUM	<input type="checkbox"/>
KEA	<input type="checkbox"/>
ADM. SER.	<input type="checkbox"/>

# INCOMING MESSAGE

*Restricted*

WG/rle

OPERATIONAL IMMEDIATE

11 Nov 50

FROM : CG X CORPS

TO : CINCPAC TOKYO JAPAN, CG 1503D ATW HANEDA AFB JAPAN, CG MATS.  
HANEDA TOKYO JAPAN

NR : X 12285

*311.4*

Rqst GHQ, X Corps courier flight land K 27 instead of K 25 effective 11 Nov. No change time schedule.

NO SIG

ACTION : SECY GEN STAFF

INFORMATION : COMMANDER IN CHIEF, CHIEF OF STAFF, G-3, AG, AG OPNS DIV,  
AG MAIL & RECORDS BR, SIGNAL

NOTE : This msg passed by AG Rad Br via Courier to CG 1503D ATW TOKYO JAPAN for action.

ADDED DIST : TRANS (11 Nov 50).

ADDED DIST : G-4 (11 Nov 50).

82515

OPERATIONAL IMMEDIATE

TOO : 101957  
MCN : 93323

*Restricted*

CONSULT CRYPTO CENTER BEFORE DECLASSIFYING

Paraphrase not required. Handle as correspondence of classification carried hereon per paragraphs 17a(1)(2) and 41c(2)(3) and g(1), AR 380-5, 15 November 1949.

COPY No.



0  
1  
2  
3  
4  
5  
6  
7  
8  
9  
10  
11  
12  
13  
14  
15  
16  
17  
18  
19  
20  
21  
22  
23  
24  
25  
26  
27

CENTRAL HEADQUARTERS FAR EAST COMMAND  
HEADQUARTERS 5TH AIR FORCE  
DAGUERRE, MISSOURI

INCOMING MESSAGE

WG/r

*Rebutted*

OPERATIONAL IMMEDIATE

11 Nov 50

FROM : CG X CORPS

TO : CINCPAC TOKYO JAPAN, CG 1503D ATW RANEDA APB JAPAN, CG MATS  
HAWAII TOKYO JAPAN

NR : X-4588

Rebut DHO X Corps courier flight land K 27 instead of K 25 effective 11 Nov. No change time schedule.

NO SIG

ACTION : BRK GEN STAFF

INFORMATION : COMMANDER IN CHIEF, CHIEF OF STAFF, G-3, AG, AG OPS DIV  
AG MILIT & RECORDS BR, SIGNAL

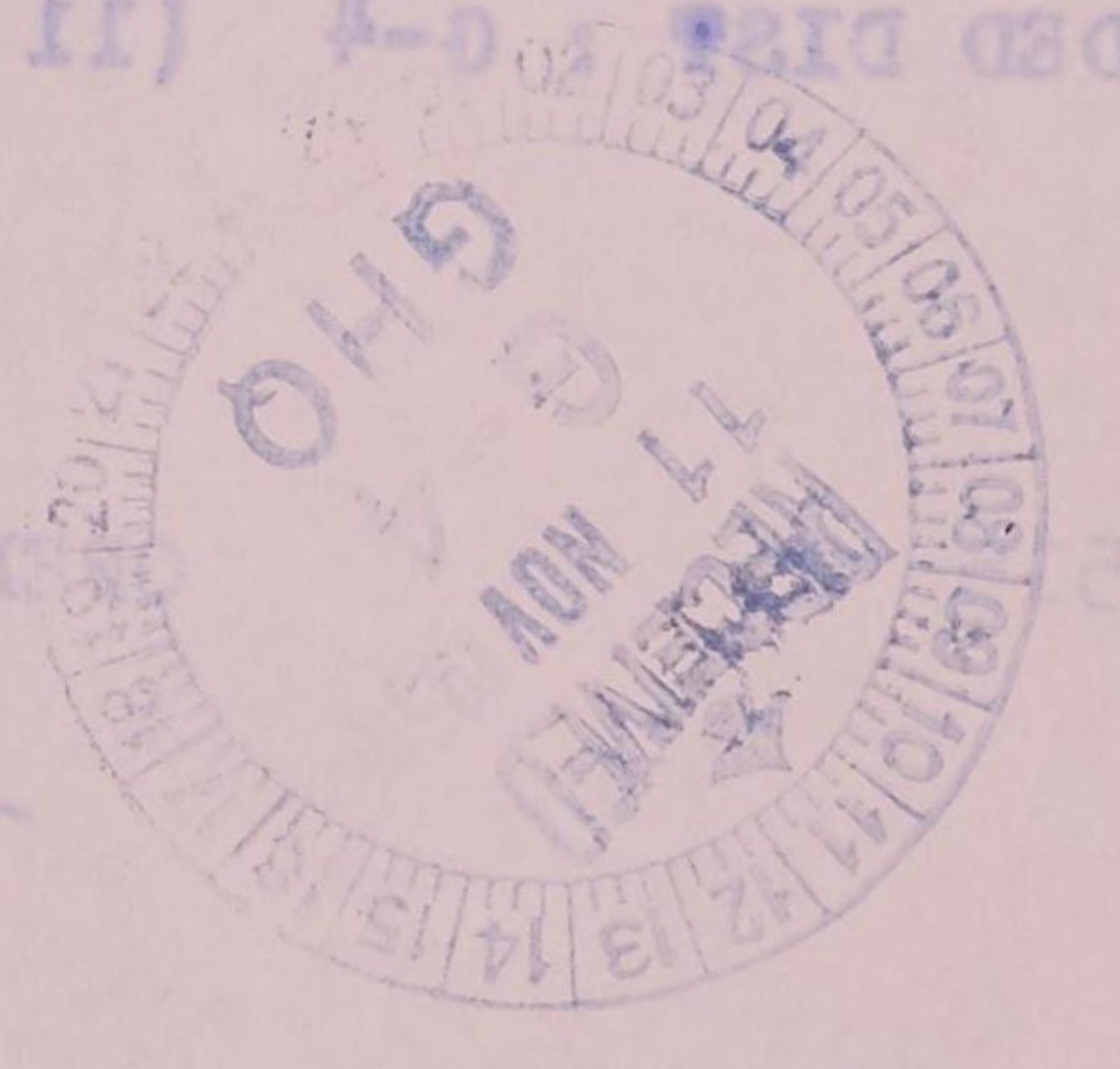
NOTE : This msg issued by AG Pac B1 via courier to CG 1503D ATW TOKYO  
JAPAN for action.

ADDED DIST : TRANS (11 Nov 50)

ADDED DIST : 0-4 (11 Nov 50)

TOO : 101957  
NM : 33323

OPERATIONAL IMMEDIATE  
*Rebutted*



CONSULT DUTY CENTER SERVICE DISSEMINATION  
Transmission not required. Handle as correspondence of classification  
dated person per paragraph 17(1)(c) of ACP(2) and ACP(1)  
in ACP(2) 13 November 1949.



DECLASSIFIED

Authority NND975029

*ll*

# CHIEF OF STAFF CORRESPONDENCE

G-4 ROUTING

A C/S G-4

DA C/S G-4

EXECUTIVE

P + O

C + RE

SUPPLY

PETROLEUM

AREA

MIN

①

②

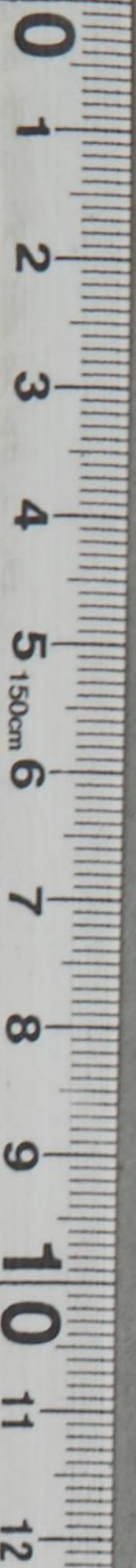
③

④

*Handwritten routing marks and initials:*  
- Large scribble over A C/S G-4  
- *FFH* next to DA C/S G-4  
- *Handwritten initials* over EXECUTIVE  
- *Handwritten initials* over P + O  
- *Handwritten initials* over C + RE  
- *Handwritten initials* over SUPPLY  
- *Handwritten initials* over PETROLEUM  
- *Handwritten initials* over AREA  
- *Handwritten initials* over MIN

*Get Jan*

16834





SECRET

10 November 1950

MEMORANDUM FOR: General Back,  
Signal Officer.

3/11/21

It is requested that the following message be transmitted through service channels to Major General Clark L. Ruffner, Chief of Staff, X Corps:

"The daily courier plane will land at YONPO (K-27) beginning 11 November 1950. Signed, Hickey."

J. M. H.

G-4

cc: G-4  
TRANS  
AG

SECRET



CHIEF OF STAFF  
CORRESPONDENCE

SECRET

*I/pro*

*31114*

Courier Plane to X Corps.

Secy Gen Staff

Transportation

10 November 1950

1.

The Chief of Staff desires that the courier plane to X Corps be instructed to land at YONPO (K-27) commencing 11 November 1950. The X Corps CP opens at HAMHUNG 11 November 1950.

cc: G-4

J. M. H.

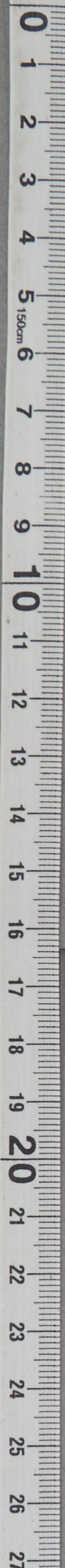
*G-4*

G-4 ROUTING	
ASG-4	
DAE/S&G-4	
EXECUTIVE	
P+O	<i>[Signature]</i>
C+RE	
SUPPLY	
PETROLEUM	
KEA	
ADMIN	<i>[Signature]</i>

*J.N. 16807*

CHIEF OF STAFF  
CORRESPONDENCE

SECRET





SECRET

CHIEF OF STAFF  
CORRESPONDENCE

1. The Chief of Staff advised that the courier plane to X Corps is  
inspected to land at YONC (A-27) commencing 11 November 1950. The X Corps  
of course at HANJUNG 11 November 1950.

U.S. W. H. 4-0 1950

ADMIN
REA
PETROLEUM
SUPPLY
CYBER
RAID
EXECUTIVE
OPERATION
ACADEMY
ROUTING

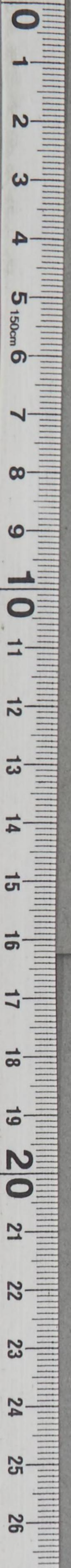
1950



CHIEF OF STAFF  
CORRESPONDENCE

SECRET

2-1





GENERAL HEADQUARTERS, FAR EAST COMMAND  
ADJUTANT GENERAL'S OFFICE  
RADIO BRANCH

G-4 ROUTING

A C/S G-4

DA C/S G-4

EXECUTIVE

P+O

C+RE

SUPPLY

PETROLEUM

KEA

ADMIN

9 Nov 50

# INCOMING MESSAGE

*Secret*  
PRIORITY

JA/rbo

FROM : CG ARMY EIGHT  
TO : CINCFE TOKYO JAPAN  
INFO : CG 5TH AF (ADV)  
NR : GX 27453 KTR

*311.4* *FRH*

Ref CINCFE msgs CX 65053, CX 67446, ZX 22738, MYMSG HX 57912 KTR. Rost clarification of Army responsibility reference control of passenger movements in courier flights from Korea to Japan and on intra-Korea passenger flts. Does control directed by your msg CX 67446 apply to air Force and Navy personnel? Is control limited to regularly scheduled flights or does it extend to all flights of passengers carrying aircraft including those operated by 5th AF?

NO SIG

ACTION : TRANS

INFORMATION : COMMANDER IN CHIEF, CHIEF OF STAFF, G-1, G-2, G-3, G-4, AG, JSPOG, SIGNAL, IN SEC UNC

81091

*Secret*  
PRIORITY

TOO : 090957 I  
MCN : 92845

CONSULT CRYPTO CENTER BEFORE DECLASSIFYING

Paraphrase not required. Handle as correspondence of classification carried hereon per paragraphs 17a(1)(2) and 41c(2)(3) and g(1), AR 380-5, 15 November 1949.

COPY No.



DECLASSIFIED

Authority NND975029



*[Faint, mirrored text, likely bleed-through from the reverse side of the page]*

JA/rpo

PRIORITY

9 Nov 53

FROM : CO ARMY EIGHT

TO : CINCPAC TOKYO JAPAN

INFO : CO 5TH AF (ADA)

RM : OX 21523 KIM

Ret CINCPAC msg CX 65023, CX 67446, CX 22138, MY 20 HK  
2712 KTR. Most classification of Army responsibility reference  
control of passenger movement in carrier flights from Korea  
to Japan and on intra-Korea passenger flights. Does control directed  
by your msg CX 67446 apply to air force and Navy personnel?  
Is control limited to regularly scheduled flights or does it extend  
to all flights of passenger-carrying aircraft including those  
operated by 5th AF?

NO SID

ACTION : TRANS

INFORMATION : COMMANDER IN CHIEF, CHIEF OF STAFF, G-1, G-2, G-3,  
G-4, AG, 12500, SIGNAL, IN 282 UNC

TOD 090521 I  
MCM 22875

*[Handwritten signature]*





DECLASSIFIED

Authority NND975029

311.4

CROSS REFERENCE OTHER THAN RADIO

FROM: G-4

DATE: 4 NOV 50

TO: TRANS

SUBJECT: C/N Mail allocations for X Corps on GHQ courier planes.

DOCUMENT IN: 311.12

JO. NO. 16352 DIV. P&O



G-4 ROUTING

A C/S G-4

DA C/S G-4

EXECUTIVE

P+O

C+RE

SUPPLY

PETROLEUM

KEA

ADMIN

Engineer

Courier Material for X Corps Courier Flight

Transportation O

Maj Harrison  
26-6290

*311.4*

*ee/*

*1* *[Signature]*

*2*

1. Reference is made to paragraph 3, C/N 1, Transportation O to Chiefs of all Staff Sections, GHQ, SCAP and FEC, subject: Courier Material for X Corps Courier Flight, 28 October 1950.

2. This Section frequently receives request from X Corps during the hours 1800 - 0800 for high priority delivery of maps of such quantities that they may be adequately handled by the courier plane. The deadline for the delivery of such material of 2000 hours on the day prior to the departure of the courier plane does not permit the Engineer Section to give expeditious delivery to high priority requests received during the hours of 1800 - 0800.

3. It is requested that the Engineer Section be permitted to deliver maps and other courier material to Haneda for dispatch on the X Corps Courier Flight up to and including 0800 on the day of departure of the Courier Flight. Such deliveries will be coordinated with the TOKPAC Air Liaison Station.

G-4

- J. G. C. -

2. From: Trans O Thru: G-4 Maj Dukes, 26-7965  
To: Engr Date: *3 NOV 1950*

1. The position of the Transportation Officer remains unchanged from that as outlined in C/N referred to in Para 1, C/N 1, above. Favorable consideration of the request as outlined in Para 3, C/N 1 above would obviously compromise the passengers and cargo previously booked for departure on this flight and further would prohibit planned utilization and booking of the aircrafts maximum capacity.

2. The CG X Corps in msg X 11869 of 2 November, has agreed to the present procedures in effect.

- H. T. M. -

GD P&O NMW/GR/JCW/mg

From: G-4 To: Engr

Major White 26-6051  
Date: *4 NOV 1950*

3 G-4 concurs with Trans O in C/N 2 above.

*NMW*

G. L. E.

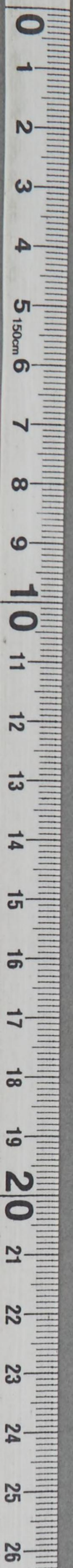
*16351*

G-4 FILE

*[Signature]*

*P&O*





Faint, mostly illegible text, possibly bleed-through from the reverse side of the page. Some words like "RECEIVED" and "DISPATCH" are visible in reverse.

RECEIVED  
4 NOV 1950  
G-4  
GHO

DISPATCH  
G-4  
11/10/50

15

G-4 FILE



GD P&amp;O NMW/GR/JCW/mg

## G-4 PLANS AND OPERATIONS DIVISION

4 November 1950

## MEMORANDUM FOR RECORD:

Subject: Courier Material for X Corps Courier Flight

1. C/N 1 from Engr to Trans O requests that the procedures for X Corps courier operation as established by Trans O (With X Corps concurrence) be altered to permit the Engr Sec to deliver to Haneda maps and such material as late as 0800 the day the courier flight is to depart.

2. C/N 2 from Trans Sec to G-4 does not favorably consider the Engr's request based on previous experience and the fact that a last minute shipment of any size would compromise the passenger and cargo previously booked for departure and would prohibit planned utilization of maximum aircraft capacity.

3. G-4 concurs with Trans O in his objection to changing present procedures. Instant C/N to Engr so indicates.

4. Within established policy.

5. Completes action on G-4 JN 16351.

J.C.W. JCW 26-6051G.R. GR 26-6032N.M.W. NMW 26-6444



GENERAL HEADQUARTERS, FAR EAST COMMAND  
ADJUTANT GENERAL'S OFFICE  
RADIO AND CABLE CENTER

G-4 ROUTING	
A C S G.	<i>[initials]</i>
D A C S G-4	<i>[initials]</i>
EXECUTIVE	<i>[initials]</i>
P T O	<i>[initials]</i>
C + R E	<i>[initials]</i>
S U P P L Y	<i>[initials]</i>
P E T R O L E U M	<i>[initials]</i>
K E A	<i>[initials]</i>
ADM	<i>[initials]</i>

2 Nov 50

# INCOMING MESSAGE

*Restricted*  
PRIORITY

JA/JJB

3114

FROM : CG FEAF TOKYO JAPAN

TO : CG COCARCOM PROV ASHIYA JAPAN, CG 1503D ATW HANEDA TOKYO JAPAN

INFO : CINCPAC TOKYO JAPAN, CG ARMY EIGHT, CG 5TH AF NAGOYA JAPAN

NR : AX 8811 OP-OP

Part 1 to COCARCOM: Desire your nec action to estb daily courier and pass flt over circuitous route within Korea to lift average rqmt of 30 pass and approx 100 lbs courier mail as req by CINCPAC. Daily route w/b: Dept K-14, 0800 I for K-9; thence northbound to K-2, K-14 and K-23; thence southbound to K-14. Reservations and alloc space this flt w/b controlled by Army Eight.

Part 2 to COCARCOM: Within the capabilities of type acft asgd this mission, req min opnl delay possible each sta so that connection can be made between terminating arr at K-14 and MATS Courier Tr 286 deptng K-14 at 1600 I. Purpose to provide thru pass service fr K-23 to Haneda.

Part 3 to COCARCOM: Direct comm is auth between your hq and Army Eight to coordinate estb of time sched and opn of flts. Advise this hq soonest of final sched arngs and acft employes.

Part 4 to 1503D ATW: Req your nec action to vary dept of Trip 286 fr K-14 to insure daily connection with southbound Army Eight courier fr K-23.

NO SIG

INFORMATION : COMMANDER IN CHIEF, CHIEF OF STAFF, G-1, G-2, G-3, G-4, AG, AG POSTAL BR, JSPOG, SIGNAL, TRANS, COMNAVFE

NOTE : This msg recd direct from CG FEAF via Courier.

76454

PRIORITY  
CONSULT CRYPTO CENTER BEFORE DECLASSIFYING  
TOO : 020405 Z  
NONE

*Restricted*

Paraphrase not required. Handle as correspondence of classification carried hereon per paragraphs 17a(1)(2) and 41c(2)(3) and g(1), AR 380-5, 15 November 1949.

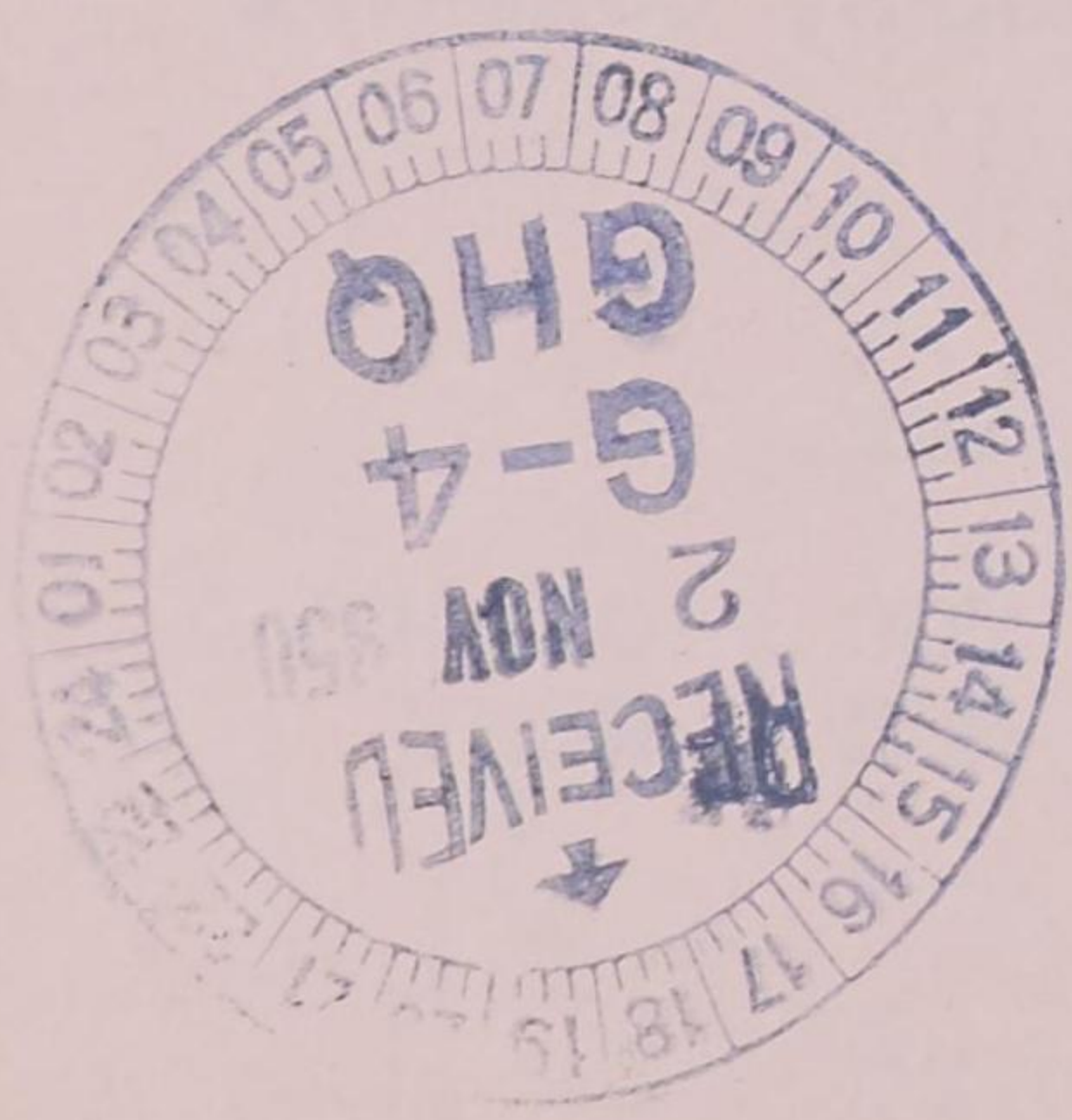
COPY No.



DECLASSIFIED

Authority NND975029

0  
1  
2  
3  
4  
5  
6  
7  
8  
9  
10  
11  
12  
13  
14  
15  
16  
17  
18  
19  
20  
21  
22  
23  
24  
25  
26  
27





G-4 ROUTING SLIP

EXECUTIVE	
P+O	
C+RE	
SUPPLY	
PETROLEUM	
KEA	
ADMIN	g

GENERAL HEADQUARTERS  
FAR EAST COMMAND

OUTGOING MESSAGE

TO-M ELR:LAH:DKD:B

*phrase not required. Consult cryptocenter before  
decias. Handle as corr of clas carried hereon per pars  
17a(1)(2) and 41c(2)(b) and g(1), AR 380-5.15 Nov. 49.*

*Restricted 311.4*

FROM: CINCFE TOKYO JAPAN

TO : CG ARMY EIGHT KOREA.....PRIORITY  
CG X CORPS KOREA .....PRIORITY

INFO: CG JLCOM YOKOHAMA JAPAN.....ROUTINE (COURIER)  
CG FEAF TOKYO JAPAN.....ROUTINE (COURIER)  
CG 1503rd ATW MATS HANEDA JAPAN.....ROUTINE (COURIER)

010415

C x 67952

To insure expeditious lift of courier material and supplies desired to accompany officer couriers on return flight to Korea, desire requirements be booked by officer couriers with GHQ Air Transportation Booking Office no later than 2000 hrs daily for shipment on following days courier flights.

Arrival of unbooked supplies and equipment at Haneda without space having been reserved causes delay in departure and compromises efficient courier service. This coordination essential to insure maximum utilization of aircraft payload each day and meet priorities desired.

OFFICIAL:

APPROVED:

K. . BUSH  
Brigadier General, USA  
Adjutant General

H. T. MILLER  
Colonel, TC  
Transportation Officer

Copies to: ROK, G-4 P&O, Trans (5 cys)

31 October 1950

MEMO FOR RECORD:

1. Courier officers arriving Tokyo have continuously failed to book with Air Transportation Booking Office (TOKPAC) the various supplies and equipment for which they desire to take back to Korea. On several occasions, supplies have arrived, unarranged for, at Haneda less than one hour prior to scheduled plane departure time.

*Restricted*



*Restricted*

FROM: CINCPAC TO: CG ARMY EIGHT, CG X CORPS, INFO: CG JLCOM, CG FLEET,  
CG 1503RD TFW MATS TO-M CLR:LLH:DKD:b

---

2. Coordination requested necessary to insure adequate space reserved to handle couriers requirements and concurrently permit full utilization of aircraft space.

3. Action coordinated with G-4 (Lt Col Ruhlen).

4. Action initiated and completed on Trans Jo. No. \_\_\_\_\_.

D.K.D.      26-7965

*Restricted*



DECLASSIFIED

Authority NND975029



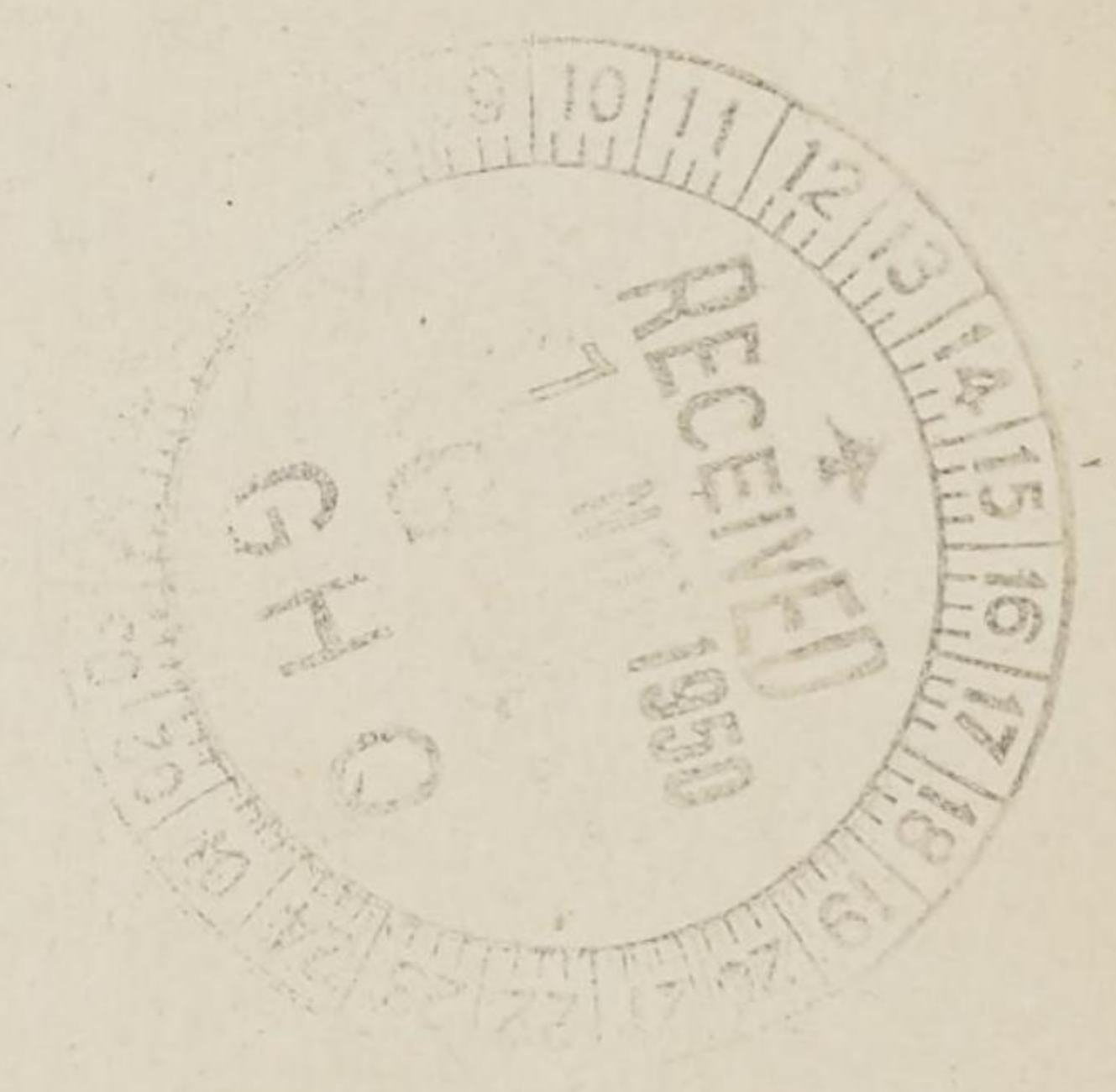
THE UNITED STATES OF AMERICA  
DEPARTMENT OF THE ARMY  
WASHINGTON, D. C.

1. The information requested is hereby acknowledged as having been received and is being furnished to you as requested.

2. The information requested is hereby acknowledged as having been received and is being furnished to you as requested.

3. The information requested is hereby acknowledged as having been received and is being furnished to you as requested.

4. The information requested is hereby acknowledged as having been received and is being furnished to you as requested.





G-4 ROUTING

AC/SG

DA/SG

EXECUTIVE

P+O

C+RE

SUPPLY

PETROLEUM

KEA

ADMIN

GENERAL HEADQUARTERS  
FAR EAST COMMAND

OUTGOING MESSAGE

TO-M ELR/LAH/DKD/GLB/ert

*Paraphrase not required. Secret Cryptocenter before  
decias. Handle as corr of clas carried hereon per pars  
17a(1)(2) and 41c(2)(3) and 1 AR 380-5.15 Nov 49.*

311229  
31 Oct

FROM: ES CINCFE TOKYO JAPAN

TO: CG FEAF TOKYO JAPAN.....PRIORITY (COURIER)

INFO: CG ARMY EIGHT KOREA.....PRIORITY  
CG FEAF CCC ASHIYA AFB JAPAN.....PRIORITY  
CG 5TH AF NAGOYA JAPAN.....PRIORITY  
CG 1503RD ATW MITS HANEDA JAPAN...PRIORITY (COURIER)

311.4

C x 67925

Army Eight message GX 26863 KTR NOTAL. Desire scheduled airlift be furnished Army Eight daily for courier and passenger purposes within Korea. Request schedule desired by CG Army Eight be followed within capabilities of type acft assigned this mission. Direct communication between organization supplying acft and CG Army Eight authorized to coordinate establishment of schedule and operation of flights. Arrival time at Kimpo of plane on daily terminating flight to make connection with flight 286 departing Kimpo at 1600I. Flight 286 from K-14 to Haneda may be delayed to insure connection when so required by operational delays.

OFFICIAL:

APPROVED:

K. B. BUSH  
Brigadier General, USA  
Adjutant General

H. T. MILLER  
Colonel TC  
Transportation Officer

Copies to: ROK, G-4 F&O, Trans (5 cys)

31 October 1950

MEMO FOR RECORD:

1. CG Army Eight msg GX 26863 KTR, 29 Oct 50, to CINCFE, requests that a daily courier plane within Korea be established. Daily reqmts for such a plane are 30 passengers and 100 pounds of courier mail. Msg requested that flight originate at Kimpo at 0800 hours, thence to K-2, K-9 and back to K-2 and Kimpo. From Kimpo to Pyongyang and back to Kimpo to arrive at approximately 1445 hours. This flight to connect with flight 286 from Kimpo to Haneda which departs at 1600 hours. CG

Secret



Secret

M/R (cont'd)

Army Eight recommended that departure time of flight 286 vary when operational delays might not insure connections of the two flights at Kimpo.

2. Such a courier plane is feasible to expedite official business between Hqs Army Eight and major subordinate commands.

3. Instant msg requests that FEAF take action to originate a courier flight within Korea in conjunction with the desires of CG Army Eight.

4. Coordination: G-4 I&O (Maj Wilwerding, 26-6051).

5. Action completed on Trans Jo. No. 2770 (CG Army Eight msg GX 26863 KTR, 29 Oct 50).

GLB SB 26-6455



Secret



G-4 ROUTING

A C / S G-4

A C / S G-4

①  
②  
③  
④  
⑤  
⑥  
⑦  
⑧  
⑨  
⑩  
⑪  
⑫  
⑬  
⑭  
⑮  
⑯  
⑰  
⑱  
⑲  
⑳  
㉑  
㉒  
㉓  
㉔  
㉕  
㉖  
㉗  
㉘  
㉙  
㉚  
㉛  
㉜  
㉝  
㉞  
㉟  
㊱  
㊲  
㊳  
㊴  
㊵  
㊶  
㊷  
㊸  
㊹  
㊺

CYRE

SUPPLY

PETROLEUM

GENERAL HEADQUARTERS  
FAR EAST COMMAND

OUTGOING MESSAGE

Paraphrase not required. Consult cryptocenter before  
decisions. Handle as comm of class carried hereon per  
17a(1)(2) and 11.2(2)

TO-M ELR/LAH/DKD/ert

*Restricted*

*311.4*

281157

*28 Oct 50*

FROM: *6000* CINCFA TOKYO JAPAN

TO: CG X CORPS KOREA.....PRIORITY  
CG FEAF TOKYO JAPAN.....PRIORITY (COURIER)

INFO: CG 1503RD ATW MATS HANEDA JAPAN...PRIORITY (COURIER)

Cx 67707

This message in two parts.

Part 1 to FEAF. Desire departure time from Haneda of GHQ daily  
courier plane to Wonsan be changed to 0830 hours effective -1 Nov.

Part 2 to X Corps. Departure time being moved up to 0830 to in-  
crease flying time during daylight hours thereby insuring daily de-  
parture of courier plane. This change will not repeat not compromise  
or restrict dispatch of courier material to your headquarters.

OFFICIAL:

APPROVED:

K. B. BUSH  
Brigadier General, USA  
Adjutant General

H. T. MILLER  
Colonel TC  
Transportation Officer

Copies to: ROK, G-4 P&O, Trans (5 cys)

27 October 1950

MEMO FOR RECORD:

1. Time of departure of daily courier plane to X Corps moved up  
from 1000 to 0830 hours in order to permit increased flying time during  
daylight hours and more time to cope with mechanical failures that may  
occur. Action is requested by 1503rd MATS (Capt Rowley, USN) to insure  
daily departure of plane in order that daily Intelligence Summary and  
other known critical courier items may be made available to meet de-  
parture time of subject flight.

2. Action msg approved by G-4 (Maj Wilwording).

3. Action initiated and completed on Trans Jo. No. \_\_\_\_\_.

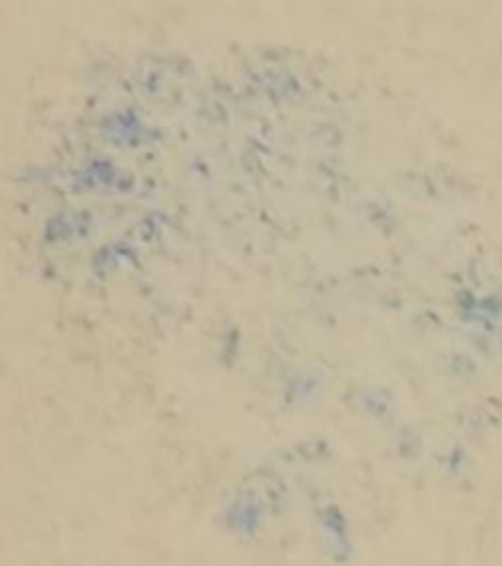
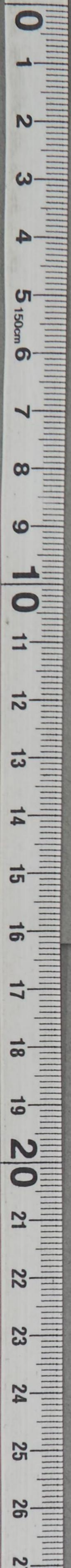
DKD \_\_\_\_\_ 26-7965

*Restricted*



DECLASSIFIED

Authority NND975029





DECLASSIFIED

Authority NND975029

G-4 ROUTING

A C / S G-4 \_\_\_\_\_

DA C / S G-4 \_\_\_\_\_

EXECUTIVE \_\_\_\_\_

① + O *MS*

C + RE \_\_\_\_\_

SUPPLY \_\_\_\_\_

PETROLEUM \_\_\_\_\_

KEA \_\_\_\_\_

② ADMIN *sm*

TN 15966



**RESTRICTED**

GENERAL HEADQUARTERS  
FAR EAST COMMAND

C H E C K      S H E E T

Maj Dukes, 26-7965

(Do not remove from attached sheets)

File No:                      Subject: Courier Material for X Corps Courier Flight

Note

No. From: Trans O

To: Chiefs all Staff Sections  
GHQ, SCAP and FEC

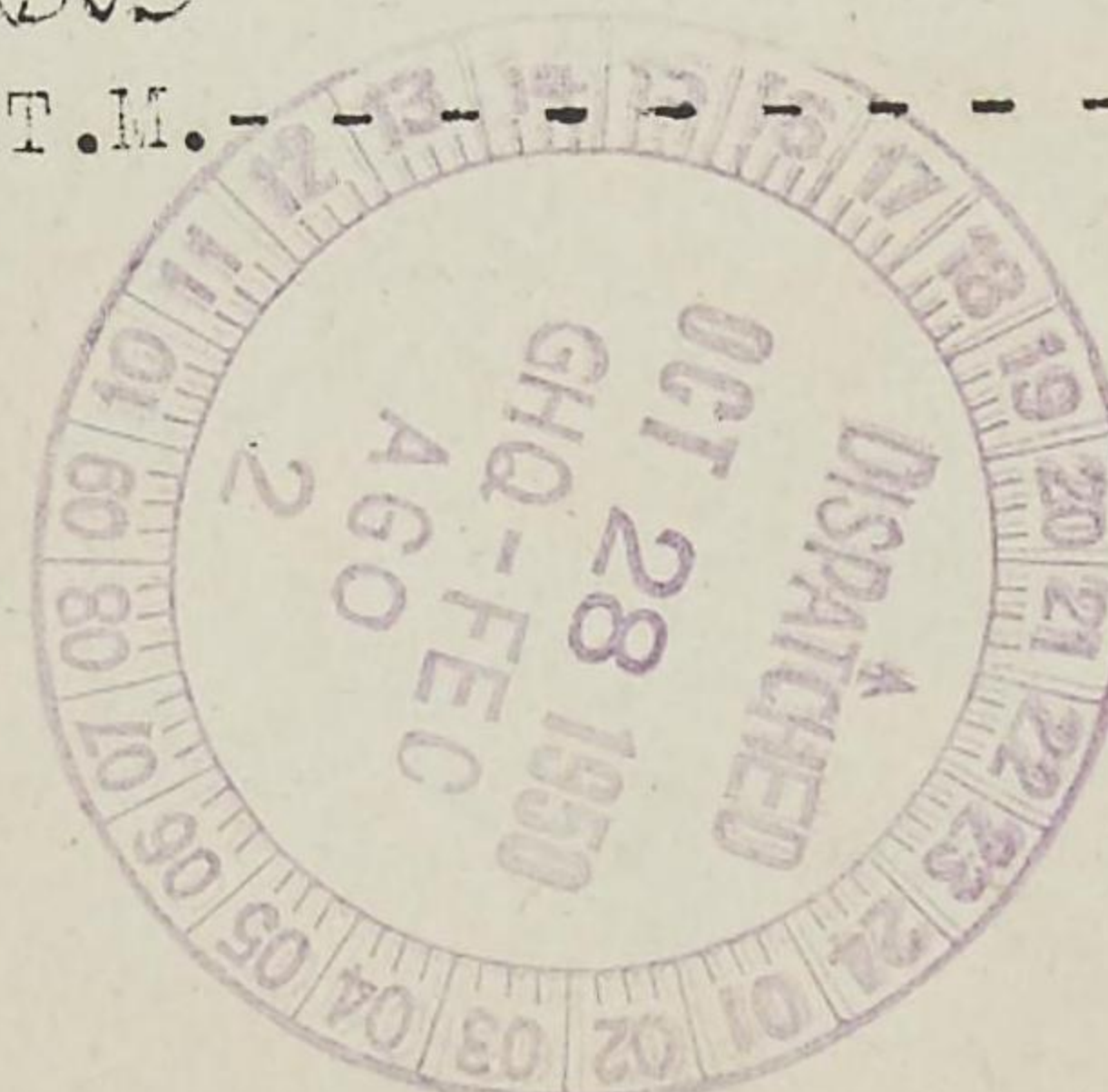
Date: **OCT 28 1950**

1.        1. Reference is made to paragraph 6, C/N 1, Trans O to above listed addressees, subj: GHQ Courier Flight, 24 Oct 50. Courier material referred to is limited to written matter, official documents and publications, special dispatches, official orders and similar official publications.
2.        2. The GHQ daily courier planes to X Corps and to Eighth Army are not intended as a means for transporting boxes, crates, cartons, and other types of containers carrying supplies and equipment normally intended for cargo planes.
3.        3. In the event that supplies and equipment are of such urgency that they are to go on the courier plane, G-4 GHQ is the approving authority. Material is to be delivered to the AG Mail and Records Branch, Room 249, Dai Ichi Building prior to 2000 hours. Packages are to be properly addressed and the weight in pounds indicated thereon.
4.        4. At 2000 hours, the AG Mail and Records Branch will book with the GHQ Air Transportation Booking Office (TOKPAC), telephone 26-6898, the number of parcels and the total weight received at the closing hour. Shipments will then be manifested for shipment on the courier flight the following morning and are to be delivered by the AG Mail and Records Branch to the Haneda AFB, no later than one hour prior to the scheduled departure of the courier plane.
5.        5. For further information pertaining to the X Corps courier flight, call Air Transportation Branch, Transportation Section, GHQ, telephone 26-6455 or 26-7965.

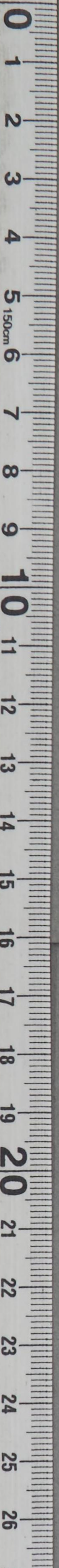
*B303*

H.T.M.

**RESTRICTED**







*[Faint, mostly illegible text, likely bleed-through from the reverse side of the page. Some words like "Subject" and "Date" are faintly visible.]*

RECEIVED  
↓  
GHC  
6-4  
15 14 13 12 11 10 09 08 07 06 05 04 03 02 01



**RESTRICTED**GENERAL HEADQUARTERS  
FAR EAST COMMAND

CHECK SHEET

Maj Dukes, 26-7965

(Do not remove from attached sheets)

File No:

Subject: Courier Material for X Corps Courier  
Flight

Note

No. From: Trans 0

To: Chiefs all Staff Sections  
GHQ, SCAP and FECDate: **OCT 28 1950**

1. Reference is made to paragraph 6, C/N 1, Trans 0 to above listed addressees, subj: GHQ Courier Flight, 24 Oct 50. Courier material referred to is limited to written matter, official documents and publications, special dispatches, official orders and similar official publications.
2. The GHQ daily courier planes to X Corps and to Eighth Army are not intended as a means for transporting boxes, crates, cartons, and other types of containers carrying supplies and equipment normally intended for cargo planes.
3. In the event that supplies and equipment are of such urgency that they are to go on the courier plane, G-4 GHQ is the approving authority. Material is to be delivered to the AG Mail and Records Branch, Room 249, Dai Ichi Building prior to 2000 hours. Packages are to be properly addressed and the weight in pounds indicated thereon.
4. At 2000 hours, the AG Mail and Records Branch will book with the GHQ Air Transportation Booking Office (TOKPAC), telephone 26-6898, the number of parcels and the total weight received at the closing hour. Shipments will then be manifested for shipment on the courier flight the following morning and are to be delivered by the AG Mail and Records Branch to the Haneda AFB, no later than one hour prior to the scheduled departure of the courier plane.
5. For further information pertaining to the X Corps courier flight, call Air Transportation Branch, Transportation Section, GHQ, telephone 26-6455 or 26-7965.

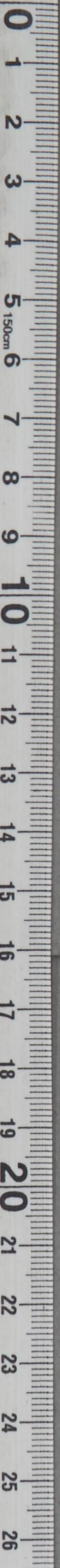
43703

H.T.M.

**RESTRICTED**



22



*[Faint, mostly illegible text, likely bleed-through from the reverse side of the page. Some words like "Subject" and "To:" are faintly visible.]*

RECEIVED  
29 OCT 1954  
G-4  
GHO

RECEIVED



G-4 ROUTING
AC/SG
DA/CSG
EXECUTIVE
P-TO
C+RE
SUPPLY
PETROLEUM
KEA
ADMIN
G-4

SECRET

Maj Wilwerding 26-6051

## X Corps Courier Flights

28 OCT 1950

CofS

1. X Corps msg X 10856, 12 Oct 50, requested establishment of a daily courier flight to Wonsan area (Tab A).
2. Courier flight was originally recommended to depart Haneda at 0900I daily by X Corps msg X 10856, 12 Oct 50, (Tab A). Time of departure was established by MATS for administrative reasons at 1000, an hour later than Kampo courier which departs at 0900, (Tab B). Both couriers are required to wait until receipt of latest G-2 and G-3 summaries for forwarding to Eighth Army and X Corps. In a further effort to give better courier service to Wonsan departure time is being moved up to 0830 (Tab C), msg now being dispatched by Trans Sec.
3. Procedure for use of courier service is contained in AG C/N to Chiefs of all staff sections, 4 Oct 50, later superseded by Trans O C/N to all Staff Sections, 24 Oct 50 (Tab D) of which pertinent features are:
  - a. Passengers book in person with TOKPAC daily between 0800 and 1800.
  - b. Courier material is delivered to AG Mail & Records Branch, Room 249 prior to 0730 daily.
  - c. Requests for space for high priority unclassified material which, because of its size and weight, cannot be carried by the officer courier are submitted to the Air Trans Branch of GHQ Trans Sec.
4. Operations Order No. 2 assigned to Eighth Army responsibility for logistic support of UN forces in Korea including units under operational control of CINUNC (hence includes X Corps).
5. Logistical airlift, other than courier lift, is allocated weekly by FEC Air Priority Board based on estimated requirements submitted by Eighth Army, COMNAVFE and PFAF, example contained in CINCFE msg CX 67288, 24 Oct 50, (Tab E).
6. Normal channel for X Corps requisitions is thru Eighth Army, who in turn submits requisition on CG JLCOM if supplies are not available in Korea. CG JLCOM msg EX 3119865, 10 Oct 50, (Tab F) clarifies procedure by which air shipment to X Corps is effected.
7. The non-arrival of courier flights to X Corps has been due primarily to poor weather conditions and to mechanical failures within aircraft. Additional difficulty has ensued as a result of X Corps submitting requisitions

G-4 FILE

SECRET

P20  
159362



**SECRET**

GD P&amp;O NMW/GR/JWW/mg

Major Wilwerding 26-6051

## X Corps Courier Flights

G-4

CofS

1 direct on CINCPAC out of proper channels. Following are presented as examples (contd) of requests for which the normal supply channel is thru Eighth Army to JLCOM.

a. On 22 Oct 50 a courier officer from X Corps requested the Engr, GHQ, informally to ship approximately 30 tons of maps to Wonsan. Since this map requisition has not been placed with JLCOM, latter has no authority to include this shipment within X Corps allocation. The Engr, GHQ, is attempting to lift maps on the daily courier flight by utilization of space available after other requirements are met.

b. On 24 Oct 50 Major O'Connor, X Corps courier, safehanded to GHQ G-4 Section a list of QM and Ord Supplies to be airlifted by courier (Tab G), normally not the type of excess cargo escorted by courier.

c. On 25 Oct 50 courier from X Corps safehanded to G-4 a list of 68 line items, parts for 1/4 ton truck motor maintenance equipment to be airlifted by courier flight, with estimated weight of 6,000 pounds, and a pencil list 7 pages in length of QM clothing and equipment to be carried by courier flight. (These lists have been turned over to the QM GHQ and are not available for reference).

d. On 26 Oct 50 X Corps msgs X 11560 and X 11593 requested surrender leaflets and national flags of storm, post, and garrison size be airlifted by courier (Tab H).

e. Submitted as Tab I are typical itemized lists of materials carried by the courier 22 to 27 Oct 50. Included in these lists are such items as fresh vegetables, maps, typewriters, paper, stencils, etc. which are normally handled thru prescribed supply channels.

8. Status of daily courier flights to Wonsan since inauguration are submitted with explanations to X Corps as Tab J.

## 9. Conclusions:

a. The courier flight is and will continue to be subject to interruption caused by weather conditions and mechanical failure which are inherent in all air operations.

G-4 FILE

**SECRET**

G-4 FILE



GD P&O NMW/GR/JWW/mg

SECRET

Maj Wilverding 26-6051

X Corps Courier Flights

G-4

CofS

1  
(contd)

b. The smooth functioning of courier service can be assured only if established procedures for transportation of personnel and cargo on courier flights are followed, and if requisitions for normal supplies are processed thru proper channels

10 Incls  
Tabs A thru J a/s

G. L. E.

M/R

28 October 1950

1. No M/R considered necessary; C/N is self-explanatory.
2. Within established policy.
3. Initiated action completed.

J.A.B. [Signature] 26-6051

G.R. [Signature] 26-6032

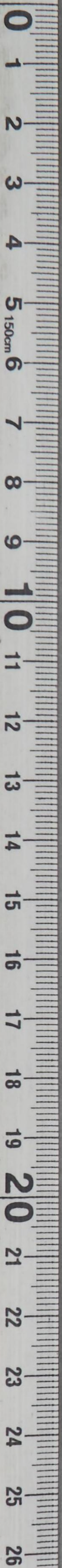
N.M.W. [Signature] 26-6444

G-4 FILE

SECRET

G-4 FILE





CD 180 MML/CB/2M/18

SECRET

28-8081

28-8081

The month ending 31 October 1950...  
in accordance with the provisions of the...  
of the... for the... of the...

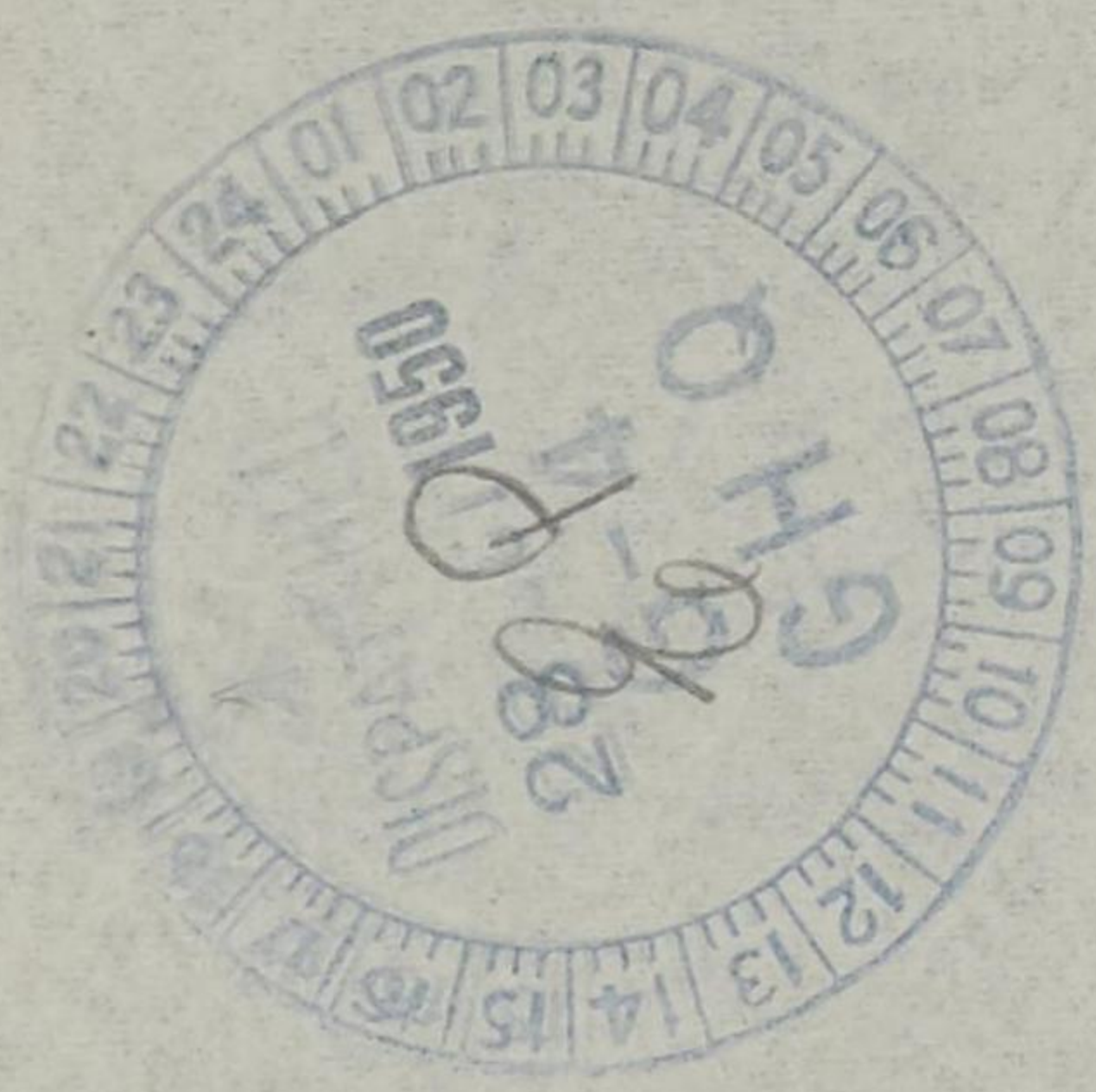
1. No M/R considered necessary; Q/N is self-explanatory.

- 2. Within established policy.
- 3. Initiated action completed.

28 October 1950

J.W.W. 28-8081  
G.R. 28-8083  
M.W.W. 28-8084

G-4 FILE



SECRET

G-4 FILE



271431

G-4 ROUTE

A C/S G4

DAC/S G4

ACTIVE

TO

C+RE

SUPPLY

PETROLEUM

KEA

ADMIN

GENERAL HEADQUARTERS  
FAR EAST COMMAND

OUTGOING MESSAGE TO ELR:LAH:tu

UNCLASSIFIED

311.4 4-4

FROM: CINCPAC TOKYO JAPAN  
TO: CG ARMY EIGHT KOREA . . . . . PRIORITY  
CG 1 CORPS KOREA . . . . . PRIORITY

②  
③

Z x 22738

To Col Lasher and Major Brantley, from Col Miller. To assist IATS and FEAF in the orderly booking and handling of pass and cargo on courier flights from Korea to Japan, suggest you have a representative at each of the air fields to work with the IATS and FEAF representatives.

As each new field opens and courier flights start operating into that field, the detailing of a representative to this task is considered to be of primary importance. Request your comments and ability to implement this suggestion.

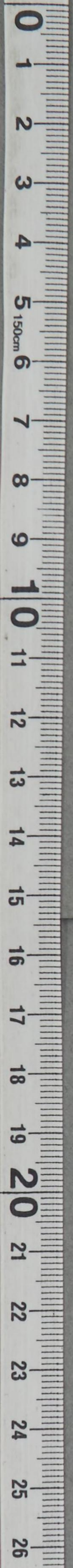
OFFICIAL: K. B. BUSH  
Brigadier General, USA  
Adjutant General  
A. T. MILLER  
Colonel, TC  
Transportation Officer

Copies to:  
ROR  
GHQ UNCLIS  
Trans (5)

MEMO FOR RECORD: 27 Oct 50

1. Complaints were received from FEAF and IATS pilots as well as GHQ Officer travelers to the effect that on the return flights there appeared to be little coordination or business-like method used in booking of passengers. Planes were often delayed while pilots or IATS representatives tried to determine who had priorities for travel on courier flights on return to Japan.
2. Instant Tech Channel msg suggests to the TOs, 1 Corps, and Army Eight, the detailing of officers to assist IATS and FEAF, whichever one is operating, in booking and handling pass for return trip.
3. Initiated action suspended on T/J \_\_\_\_\_ until 30 Oct.

L.A.H. [Signature] 26-6508





G-4 ROUT

A C/S G-4

DA C/S G-4

EXECUTIVE

P&O

C+RE

SUB

PETROLEUM

KEA

ADMIN

*Handwritten:* FILE  
4  
2

GENERAL HEADQUARTERS  
FAR EAST COMMAND

271425

OUTGOING MESSAGE

TO-M ELR/LAH/DKD/ert

*Handwritten:* Restricted

*Handwritten:* 311.4

*Handwritten:* G-4

FROM:

CINCFE TOKYO JAPAN

TO:

CG ARMY EIGHT KOREA.....OPERATIONAL IMMEDIATE

CG 2D LOG COMD KOREA.....OPERATIONAL IMMEDIATE

INFO:

CG FEAF TOKYO JAPAN.....PRIORITY (COURIER)

CG 1503RD ATW MATS HANEDA

JAPAN.....PRIORITY (COURIER)

C x 67630

Daily courier plane scheduled for 28 Oct will not rpt not depart Haneda until 1300. Entire schedule for this day only delayed accordingly.

OFFICIAL:

APPROVED:

K. B. BUSH  
Brigadier General, USA  
Adjutant General

H. T. MILLER  
Colonel TC  
Transportation Officer

Copies to: ROK, G-4 P&O, Trans (5 cys)

27 October 1950

MEMO FOR RECORD:

- Plane delayed at request of 1503rd MATS with concurrence of FEAF (Gen Crab), G-4 (Gen Eberle) and Trans O (Col Miller).
- Action initiated and completed on Trans Jo. No. \_\_\_\_\_.

DKD TV 26-7965

*Handwritten:* Paraphrase not required. Consult crytocenter before decias. Handle ascorr of clas carried bereon per pars 17a(1)(2) and 41c(2)(3) and g(1), AR 380-5.15 Nov 49.

*Handwritten:* Restricted



G-4 ROUTING	
AC/S G-4	
DAC/S G-4	
EXECUTIVE	
P&O	✓
C+RE	
SUPPLY	
PETROLEUM	
KEA	
ADMIN	

GENERAL HEADQUARTERS  
FAR EAST COMMAND

OUTGOING MESSAGE

TO-M ELR:LAH:DKD:HJI:b

Paraphrase not required. Consult crytocenter before  
decias. Handle ascorr of clas carried bereon per pars  
1/a(1)(2) and 4/c(2)(3) and g(1). AR 380-5.15 Nov 49.

(3)

*lv Restricted*  
*311.4*

*27 out*  
*271225*

FROM: CINCFE TOKYO JAPAN

TO : CG ARMY EIGHT KOREA .....ROUTINE  
CG X CORPS KOREA.....ROUTINE  
CG FFAF TOKYO JAPAN.....ROUTINE (COURIER)

INFO: CG JLCOM YOKOHAMA JAPAN.....ROUTINE (COURIER)  
COMNAVPE TOKYO JAPAN.....ROUTINE (COURIER)  
CG 1503RD ATW MATS HANEDA JAPAN.....ROUTINE (COURIER)

*Cx67615*

CINCFE msg CX 66659, 17 October, relative to current daily courier flights, is declassified from "SECRET" to "RESTRICTED", effective this date.

OFFICIAL:

APPROVED:

K. B. BUSH  
Brigadier General, USA  
Adjutant General

H. T. MILLER  
Colonel, TC  
Transportation Officer

Copies to: C-in-C, C/S, G-1, G-2, G-3, G-4, G-4 P&O, AG, AG Opns,  
AG repl, AG Mail, Regrading Board, Trans (5 cys)

MEMO FOR RECORD:

27 October 1950

1. Action msg is based on FFAF msg AX 8698 OP-OP, 25 October declassifying information on daily courier flights.

2. Coordination:

AG - (Maj. Barford)  
Regrading Board - (Maj. Gruits)

3. Action completed on Trans Jo. No. 2628 .

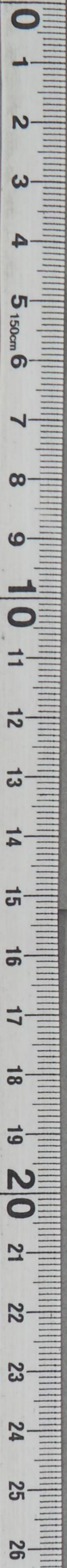
H.J.I. *H.J.I.* 26-6050

*Restricted*



DECLASSIFIED

Authority NND975029



GENERAL INVESTIGATIVE  
DIVISION  
OUTSIDE BUREAU

TO: SAC, NEW YORK

*[Handwritten signature]*

FROM: SAC, NEW YORK  
TO: SAC, NEW YORK  
SUBJECT: [Illegible]

Reference is made to your letter of 10/27/50, relative to [illegible] activity in New York.

Enclosed for the New York Office are two copies of a report dated 10/27/50, prepared by the New York Office, and one copy of a report dated 10/27/50, prepared by the New York Office.

Very truly yours,  
Special Agent in Charge





G-4 ROUTINE

A C/S G-4

DA C/SG-4

EXECUTIVE

INFO

C-RE

SUPPLY

PETROLEUM

KEA

ADMIN

*[Handwritten signatures and initials over the routing slip]*

*311.41*

Maj Dukes, 26-7965

GHQ Courier Flights

Thru: G-4  
SGS

*2007 1950*

② Trans O *RA*

2.  
(cont'd)

to depart and arrive before dark. Wonsan has no night landing facilities.

2. The importance and necessity that a daily plane reach Wonsan has been taken up with 1503rd MATS, the agency designated by FEAF to furnish this service, and the Trans O has been assured that every possible effort is being put forth to assure this accomplishment.

3. The Trans O has dispatched a C/N to all Staff Sections, GHQ, SCAP and FEC, 24 Oct 50, subj: Daily Courier Flights, which sets forth the flight schedule and procedure for booking passengers and courier material. Strict adherence to this procedure should alleviate any condition as occurred on 26 Oct.

4. All concerned who are involved with the booking and dispatch of this courier flight have been previously advised of the necessity for its regular and timely departure.

H. T. M.

From: G-4

To: SGS

Lt Col Buhlen 26-6032

Date: 27 OCT 1950

3

1. From info in C/N 2 non-arrival of X Corps courier plane between 18-25 October has apparently been due to:

- a. Mechanical failure.
- b. Weather conditions.

2. Transportation Officer is coordinating a revised schedule for this courier flight to permit a departure time earlier than that requested by CG X Corps. Mechanical failures and weather are circumstances inherent in air operations. 1503d ATW, PAC Div MATS is taking action to reduce the former, ~~the latter is normally beyond control of this headquarters.~~

G. L. E.

*P.O.  
15798  
R7*



From: Trans O

Thru: C-4  
To: SGS

Maj Dukes, 26-7965  
Date: 26 OCT 1950

2.

1. Circumstances surrounding the GHQ daily courier flight to Wonsan, subsequent to its inauguration on 18 October, are as follows:

- a. 18 Oct: Plane was loaded and ready to depart on schedule but developed carburetor trouble which was uncorrectible on that day and prevented plane from departing.
- b. 19 Oct: Plane departed and arrived Wonsan as scheduled.
- c. 20 Oct: Plane departed but could not land Wonsan because of weather. Plane returned to Haneda.
- d. 21 Oct: Plane departed but developed motor trouble enroute and was forced to return to Haneda.
- e. 22, 23 and 24 Oct: Plane departed and arrived Wonsan as scheduled.
- f. 25 Oct: Plane departed but could not land Wonsan because of weather. Plane returned to Haneda.
- g. 26 Oct: Plane ready at 1000 hours but delayed due to late arrival of X Corps courier with excess cargo over and above the amount booked. This required unloading and reloading of cargo and passengers which when completed had delayed departure to the extent there was insufficient time remaining for plane



DECLASSIFIED

Authority NND975029

GD P&O NMW/GR/bsc

G-4 PLANS AND OPERATIONS

27 Oct 50

MEMO FOR RECORD:

SUBJECT: GHQ Courier Flights

1. C/N SGS to Trans thru G-4 cites successful completion of only 4 X Corps courier flights in period 18-25 Oct inclusive, and requests prompt action to insure positive service.

2. Trans O info is that of 4 abortions in this period, 2 were due to mechanical failure, 2 to weather conditions. Failure of flight on 26 Oct due to courier failing to follow instructions, arriving at plane side late, with large amount of cargo in excess of that previously booked, requiring unloading and reloading of plane which delayed departure beyond time when flight could be accomplished prior to dark as Wonsan has no night landing facilities.

3. C/N to SGS self-explanatory.

4. Within established policy.

5. Completes action on G-4 Journal No. 15798.

GR AK 26-6032

NMW mm 26-6444

JN 15798

G-4 FILE



GD TEO MM/GR/pec

G-4 PLANS AND OPERATIONS

27 Oct 50

MEMO FOR RECORD:

SUBJECT: G-4 Counter Flights

1. C/N 822 to Trans thru G-4 cites successful completion of only 4 X Corps counter flights in period 18-26 Oct inclusive, and requests prompt action to insure positive service.

2. Trans 0 info is that of 4 abortions in this period, 3 were due to mechanical failure, 1 to weather conditions. Failure of flight on 26 Oct due to counter failing to follow instructions, arriving at plane side late, with large amount of cargo in excess of that previously booked, requiring unloading and reloading of plane which delayed departure beyond time when flight could be accomplished prior to dark as Warsaw has no night landing facilities.

3. C/N to 822 self-explanatory.

4. Within established policy.

5. Complete action on G-4 Journal No. 18798.

GR 28-8033

MMW 28-8444





G-4 ROUTE
A C/S G-4
PAC/S G-4
EXECUTIVE
P+O
C+RE
SUPPLY
PETROLEUM
EA
ADMIN

GENERAL HEADQUARTERS  
FAR EAST COMMAND

OUTGOING MESSAGE

TO-M ELR/LAH/DKD/ert

*Restricted*

*26 Oct*  
*261335*

*311.9*

*P-4*

FROM: *(2)* CINCFE TOKYO JAPAN

TO: CG X CORPS KOREA.....OPERATIONAL IMMEDIATE

INFO: CG FEAF TOKYO JAPAN.....PRIORITY (COURIER)

CG 1503RD ATW MATS HANEDA  
JAPAN.....PRIORITY (COURIER)

*C x 67540*

Courier plane did not repeat not depart this date. Departure precluded by late arrival of officer courier with excess cargo necessitating reloading of airplane. This delay prohibited plane's departure in sufficient time to permit arrival Wonsan prior to dark.

In addition to regularly scheduled courier plane, a special flight now scheduled for departure Haneda 0300, 27 Oct, to handle accumulated courier supplies.

OFFICIAL:

APPROVED:

K. B. BUSH  
Brigadier General, USA  
Adjutant General

H. T. MILLER  
Colonel TC  
Transportation Officer

Copies to: ROK, G-4 P&O, Trans (5 cys)

26 October 1950

MEMO FOR RECORD:

1. Instant message advises X Corps of the non-departure of courier plane on 26 October and reasons therefor.

2. Action initiated and completed on Trans Jo. No. \_\_\_\_\_.

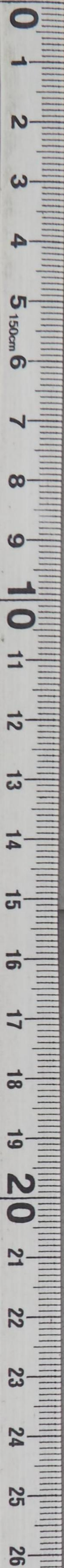
DKD 26-7965

*Restricted*



DECLASSIFIED

Authority NND975029



*[Handwritten marks]*

*[Faint mirrored text]*

*[Faint mirrored text]*

*[Faint mirrored text]*

*[Faint mirrored text]*

*[Faint mirrored text]*

*[Faint mirrored text]*

*[Faint mirrored text]*

*[Faint mirrored text]*

*[Faint mirrored text]*

*[Faint mirrored text]*

*[Faint mirrored text]*

*[Faint mirrored text]*

*[Faint mirrored text]*

*[Faint mirrored text]*

*[Faint mirrored text]*

*[Faint mirrored text]*

*[Faint mirrored text]*

*[Faint mirrored text]*

*[Faint mirrored text]*

*[Faint mirrored text]*

*[Faint mirrored text]*



*[Faint mirrored text]*



G-4 ROUTING  
 AC/S G4  
 DAC/S G4  
 P-4  
 C-4 RE  
 SUPPLY  
 PETROLEUM  
 KEA  
 ADMIN

*MM*  
*FK*  
*3*  
*mm*

GENERAL HEADQUARTERS  
FAR EAST COMMAND

OUTGOING MESSAGE

Paraphrase not required. Consult cryptocenter before  
decias. Handle as corr of clas carried herein per pa  
17a(1)(2) and 41c(2)(3) and (4) AR 380-5.15 Nov 49

TO-M ELR/LAH/DKD/ert

251235  
*gd*

311.4

FROM: CINCFE TOKYO JAPAN

TO: CG ARMY EIGHT KOREA.....PRIORITY  
 CG X CORPS KOREA.....PRIORITY

INFO: CG FEAF TOKYO JAPAN.....PRIORITY (COURIER)  
 CG 1503RD ATW MATS HANEDA JAPAN....PRIORITY (COURIER)  
 CG 2D LOG COMD KOREA.....PRIORITY  
 CG 3D LOG COMD KOREA.....PRIORITY

**C x 67446**

This msg in two parts.

Part 1 to Army Eight. Reference GHQ daily courier plane to Kimpo, MATS flight 285-286. Desire Army Eight establish positive control over passenger traffic for return flight, including authorization for and priority of travel. 1503rd MATS Haneda sending Captain Shean and one airman to Kimpo as MATS traffic representatives.

Part 2 to X Corps. Reference GHQ daily courier plane to Wonsan, MATS flight 287-288. Desire X Corps establish positive control over passenger traffic for return flight, including authorization for and priority of travel.

OFFICIAL:

APPROVED:

K. B. BUSH  
Brigadier General, USA  
Adjutant General

H. T. MILLER  
Colonel TC  
Transportation Officer

Copies to: ROK, Trans (5 cys), G-4 P&O

25 October 1950

MEMO FOR RECORD:

1. Instant msg prompted by:

a. Information from 1503rd MATS Haneda (Comd Johnson, Capt Stemmer) that pilots report continuing trouble in determining passenger lists for re-

*Secret*



M/R (cont'd)

Secret

turn flight from Kimpo, and personnel are boarding the plane apparently at their own prerogative and without official orders or designated air priority.

b. Report from Maj R. W. Humphreys, Trans Sec, GHQ, who returned from Kimpo on 23 Oct, substantiated the above reported conditions.

2. Information that an officer and an airman are being sent to Kimpo by 1503rd MATS was received from Comd Johnson on 25 Oct 50.

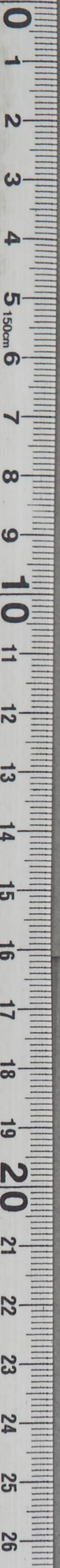
3. Part 2 of instant msg being sent to X Corps to insure similar action at Wonsan. However, no adverse reports of conditions there have been received.

4. Action initiated and completed on Trans Jo. No. \_\_\_\_\_.

DKD      26-7965

Secret





*[Faint, mirrored text, likely bleed-through from the reverse side of the page]*



*[Faint handwritten text at the bottom of the page]*



GENERAL HEADQUARTERS  
EAST COMMAND  
**SECRET**  
CHECK SHEET

Maj Grace, 26-6455

(Do not remove from attached sheets)

*3114*

File No:

Subject: GHQ Courier Flights

Note No.

From: Trans O

To: Chiefs, Staff Sections,  
GHQ, SCAP & FEC

Date: 24 Oct 50

1  
(contd)

6. Courier material intended for dispatch to Eighth Army, X Corps, or their subordinate units should be delivered to AG, Mail & Records Branch, Room 249, Dai Ichi Building, prior to 0730 hours daily. Material received after this hour cannot be guaranteed dispatch until the next day.

7. When classified material is not carried by an officer courier, it should be placed in postal channels if classification is below TOP SECRET and in security courier channels if TOP SECRET.

a. Information concerning postal channels can be obtained from AG Postal Branch, 26-7263.

b. Information concerning security courier channels can be obtained from the courier transfer office, Cargo (0391) 557 or 558.

8. Chiefs of Staff Sections having high priority unclassified material which, because of its size and weight, cannot be carried by the officer courier should contact the Air Transportation Branch, Transportation Section, GHQ, 26-6455, for information and assistance regarding such shipments. It is the responsibility of the Chief of the Staff Section concerned to provide for the delivery of the air cargo to Tachikawa Air Base for loading on the plane, after securing proper release number from the Transportation Section.

----- H. T. M. -----

From: G-4

To: All Division Chiefs

25 October 1950

2

For information and guidance.

Copy to:

Exec

P&O

C&RE

Sup

Pet

KEA

*Handwritten initials/signature*

*Handwritten signature*  
----- G. L. E. -----

Exec



## GENERAL HEADQUARTERS

## FAR EAST COMMAND

SECRET  
CHECK SHEET

Maj Grace 26-6455

(Do not remove from attached sheets)

File No:

Subject: GHQ Courier Flights

Note  
No.

From: Trans 0

To: Chiefs, Staff Sections,  
GHQ, SCAP & FEC

Date: 24 Oct 50

1

1. a. Trans 0 C/N, 4 Oct 50, subj: GHQ-Kimpo Courier Flights, is superseded.

b. With AG concurrence, C/N, file AG 311.4 (4 Oct 50)AG, subj: Use of Courier Service, GHQ, FEC, 4 Oct 50, is superseded.

2. The following daily schedule of GHQ-Eighth Army Courier Flight to Kimpo Air Field, Korea, is announced effective immediately:

<u>Depart</u>		<u>Arrive</u>	
Haneda	- 0900I	Pusan	- 1300I
Pusan	- 1330I	Kimpo	- 1500I
Kimpo	- 1600I	Haneda	- 2030I

Flight returns to Haneda same day.

3. The following daily schedule is announced, effective immediately, for the GHQ-X Corps Courier Flight to Wonsan:

<u>Depart</u>		<u>Arrive</u>	
Haneda	- 1000I	Wonsan	- 1530I
Wonsan	- 1630I	Haneda	- 2130I

Flight returns to Haneda same day.

4. These flights are primarily for GHQ purposes and are intended to expedite transportation of high priority courier material and/or passengers between GHQ and Korea.

5. The following procedure will be followed for booking passengers on the GHQ Courier Flights:

Requests for booking must be made in person between the hours 0800 and 1800 daily at the TOKPAC Air Liaison Station, 26-6898, located on the first floor of the Taisho Insurance Building (Central Billeting Office). Upon presentation of two copies of orders authorizing military air travel, passengers are accepted on a space available basis and given priority based upon urgency and need of the military establishment in Korea.



G-4  
102*Secret*  
GENERAL HEADQUARTERS  
FAR EAST COMMAND

## CHECK SHEET

Maj Grace, 26-6455

(Do not remove from attached sheets)

File No:

Subject: GHQ Courier Flights

Note

No.

From: Trans O

To: Chiefs, Staff Sections,  
GHQ, SCAP & FEC

Date: 24 Oct 50

1.

1. a. Trans O C/N, 4 Oct 50, subj: GHQ-Kimpo Courier Flights, is superseded.

b. With AG concurrence, C/N, file AG 311.4 (4 Oct 50)AG, subj: Use of Courier Service, GHQ, FEC, 4 Oct 50, is superseded.

2. The following daily schedule of GHQ-Eighth Army Courier Flight to Kimpo Air Field, Korea, is announced effective immediately:

DepartArriveHaneda - 0900I  
Pusan - 1330I  
Kimpo - 1600IPusan - 1300I  
Kimpo - 1500I  
Haneda - 2030I

Flight returns to Haneda same day.

3. The following daily schedule is announced, effective immediately, for the GHQ-X Corps Courier Flight to Wonsan:

DepartArriveHaneda - 1000I  
Wonsan - 1630IWonsan - 1530I  
Haneda - 2130I

Flight returns to Haneda same day.

4. These flights are primarily for GHQ purposes and are intended to expedite transportation of high priority courier material and/or passengers between GHQ and Korea.

5. The following procedure will be followed for booking passengers on the GHQ Courier Flights:

Requests for booking must be made in person between the hours 0800 and 1800 daily at the TOKPAC Air Liaison Station, 26-6898, located on the first floor of the Taisho Insurance Building (Central Billeting Office). Upon presentation of two copies of orders authorizing military air travel, passengers are accepted on a space available basis and given priority based upon urgency and need of the military establishment in Korea.

*Secret*



*Secret*GENERAL HEADQUARTERS  
FAR EAST COMMAND

## CHECK SHEET

Maj Grace, 26-6455

(Do not remove from attached sheets)

File No:

Subject: GHQ Courier Flights

Note

No.

From:

To:

Date:

1.  
(cont'd)

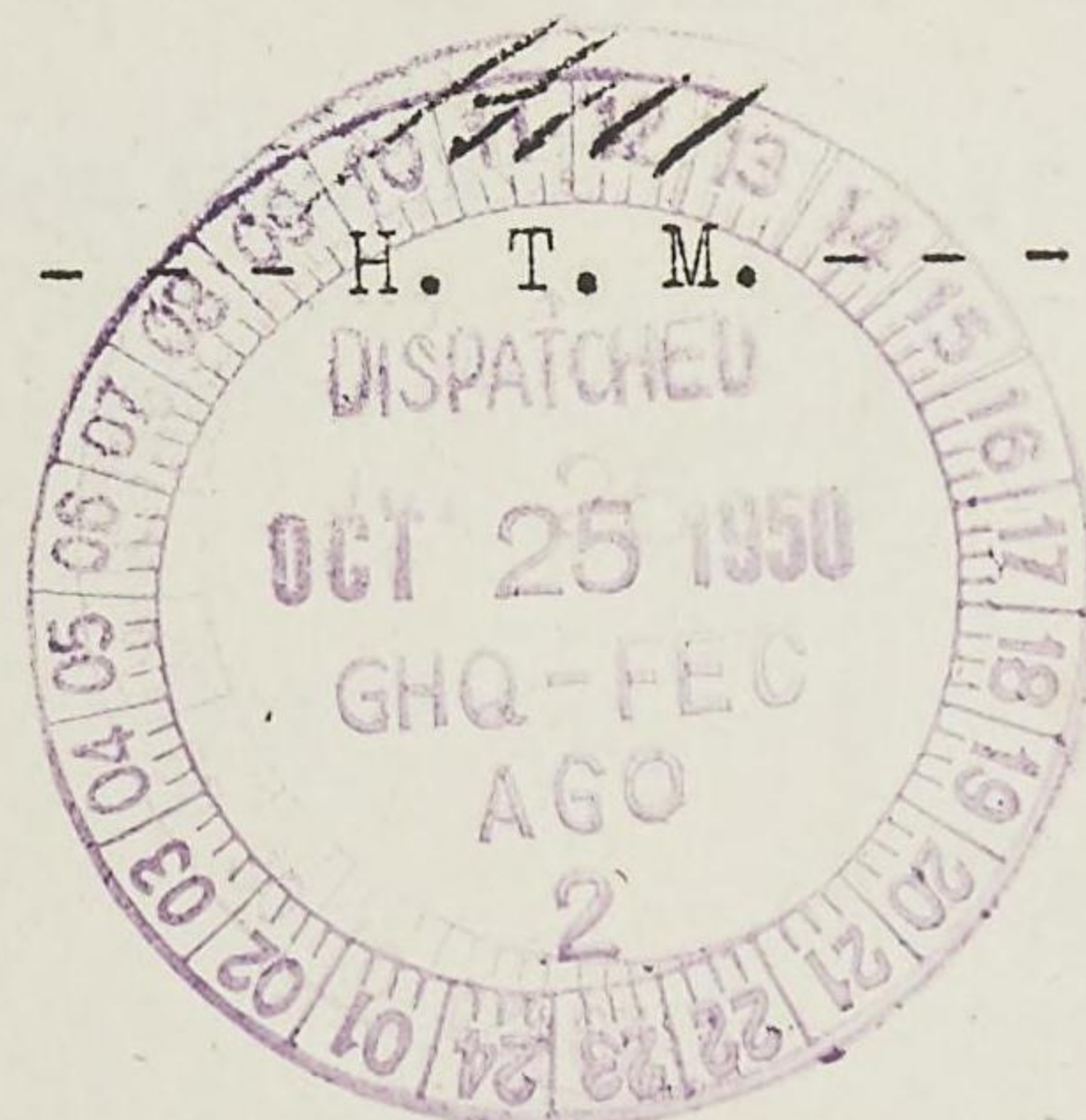
6. Courier material intended for dispatch to Eighth Army, X Corps, or their subordinate units should be delivered to AG, Mail & Records Branch, Room 249, Dai Ichi Building, prior to 0730 hours daily. Material received after this hour cannot be guaranteed dispatch until the next day.

7. When classified material is not carried by an officer courier, it should be placed in postal channels if classification is below TOP SECRET and in security courier channels if TOP SECRET.

a. Information concerning postal channels can be obtained from AG Postal Branch, 26-7263.

b. Information concerning security courier channels can be obtained from the courier transfer office, Cargo (0391) 557 or 558.

8. Chiefs of Staff Sections having high priority unclassified material which, because of its size and weight, cannot be carried by the officer courier should contact the Air Transportation Branch, Transportation Section, GHQ, 26-6455, for information and assistance regarding such shipments. It is the responsibility of the Chief of the Staff Section concerned to provide for the delivery of the air cargo to Tachikawa Air Base for loading on the plane, after securing proper release number from the Transportation Section.

*Secret*



DECLASSIFIED

Authority NND975029

GENERAL INFORMATION  
FOR THE OFFICE

CHECK SHEET

Ref: [Illegible]

(Do not remove from attached sheets)

Page	Date	Initials	Remarks
1			1. Counter material intended for dispatch to [Illegible] X Corps, or their subordinate units should be delivered to AF, Hall & [Illegible] Branch, Room 2A, Del [Illegible], prior to 0700 hours daily. Material received after this hour cannot be guaranteed dispatch until the next day.
2			2. When classified material is not carried by an officer courier, it should be placed in postal channels if classification is below TOP SECRET and in security courier channels if TOP SECRET.
3			3. Information concerning postal channels can be obtained from the [Illegible] office, [Illegible] (0391) [Illegible] or [Illegible].
4			4. Each section having high priority classified material should be contacted on the Air Transportation Branch, [Illegible] for information and assistance regarding such matters. The responsibility of the Chief of the Staff Section is to provide for the delivery of the air cargo to [Illegible] upon receipt of the plane, after securing proper release number from the Transportation Section.





GENERAL HEADQUARTERS, FAR EAST COMMAND  
ADJUTANT GENERAL'S OFFICE  
RADIO AND CABLE CENTER

INCOMING MESSAGE

*Secret*  
PRIORITY

*311.4*

G-4 ROUTING	
A C/S G	<i>Mo</i>
DAC/S G-4	<i>by</i>
EXECUTIVE	<i>hge</i>
G-4 SUPPLY	<i>+</i>
PETROLEUM	<i>+</i>
ADMIN	<i>+</i>

23 Oct 50

FROM : CG FEAF TOKYO JAPAN

TO : CINCPAC TOKYO JAPAN

INFO : CG ARMY EIGHT, CG X CORPS KOREA, CG MATS NANEDA AFB JAPAN

NR : AX 26448 OP-OP

This msg in 2 parts.

Part 1. Ref your msg cite CX 67145 dtd 22 Oct 50, courier schedules as announced in ourad Cite AX 5375 OP-OP, 17 Oct 50, will not be changed or deviated from w/o prior coordination. Your hq w/b advised ASAP of any mechanical difficulties or weather conditions whi interfere w/daily schedule.

Part 2. Ref msg fr CG X Corps, DM: 211826/I to CINCPAC w/info tht hq concerning courier flt to K-25, the folg info is submitted: Trip No.287-288 unable to land K-25 on 20 Oct 50 because of weather and on 21 Oct 50 because of engine failure shortly after take-off. Flt conducted as scheduled on 22 Oct 50.

NO SIG

ACTION : TRANS

INFORMATION : COMMANDER IN CHIEF, CHIEF OF STAFF, G-1, G-2, G-3, G-4, AG, AG MAIL & RECORDS BR, JSPOG, SIGNAL

NOTE : This msg received direct from CG FEAF via courier.

69377

PRIORITY  
*Secret*

TOO : 230330 Z  
MCN : NONE

CONSULT CRYPTO CENTER BEFORE DECLASSIFYING

Paraphrase not required. Handle as correspondence of classification carried hereon per paragraphs 17a(1)(2) and 4lc(2)(3) and g(1), AR 380-5, 15 November 1949.

COPY No.





COMMUNICATIONS SECTION

*Handwritten signature*  
PRIORITY

23 OCT 50

FROM: 101 STAFF TOKYO JAPAN

TO: 101 STAFF TOKYO JAPAN

SUBJECT: 101 STAFF TOKYO JAPAN

REF: 101 STAFF TOKYO JAPAN

This message is a report.  
Base 1. The report was filed on 23 Oct 50.  
As arranged in order of 2375 01-02, 17 Oct 50, will  
not be changed or deleted from the report connection. Your report  
advised that of any mechanical difficulties or weather conditions  
affecting the flight schedule.  
Base 2. The flight of 101 Corps, 101 21386T to 101 Corps, 101  
of connecting routes to 101 Corps, the flight is limited to  
101 Corps. Also to land 101 on 20 Oct 50 because of weather and on  
101 Corps because of engine failure shortly after take-off. The  
flight is scheduled on 23 Oct 50.

NO SIG

ACTION: TAKE

INFORMATION: COMMANDER 101 STAFF, CHIEF OF STAFF, 101 21386T, 101  
AS: AS MAIL RECORDS BR, 101 21386T, SIGNAL

NOTE: This message received direct from 101 STAFF via courier.

TO: 101 STAFF  
FROM: 101 STAFF

*Handwritten signature*  
PRIORITY





GENERAL HEADQUARTERS, FAR EAST COMMAND  
ADJUTANT GENERAL'S OFFICE  
RADIO AND CABLE CENTER

**INCOMING MESSAGE**

CORRECTED COPY

*Secret*  
PRIORITY

IFF **G-4** FILE

G-4

A C/S

DA C/S

EXECUTIVE

TO

C+RE

SUPPLY

PETROLEUM

KEA

ADMIN

23 Oct 50

*311.7*

FROM : CG FEAF TOKYO JAPAN

TO : CINCPAC TOKYO JAPAN

INFO : CG ARMY EIGHT, CG X CORPS KOREA, CG MATS HANEDA AFB JAPAN

NR : AX 2644 B OP-OP

This msg in 2 parts.

Part 1. Ref your msg cite CX 67145 dtd 22 Oct 50, courier schedules as announced in ourad Cite AX 5375 OP-OP, 17 Oct 50, will not be changed or deviated from w/o prior coordination. Your hq w/b advised ASAP of any mechanical difficulties or weather conditions whi interfere w/daily schedule.

Part 2. Ref msg fr CG X Corps, DM: 211826/I to CINCPAC w/info th hq concerning courier flt to K-25, the folg info is submitted: Trip No.287-288 able to land K-25 on 20 Oct 50 because of weather and on 21 Oct 50 because of engine failure shortly after take-off. Flt conducted as scheduled on 22 Oct 50.

NO SIG

ACTION : TRANS

INFORMATION : COMMANDER IN CHIEF, CHIEF OF STAFF, G-1, G-2, G-3, G-4, AG, AG MAIL & RECORDS BR, JSPOG, SIGNAL

NOTE : This msg received direct from CG FEAF via courier.

69377

PRIORITY

*Secret*

TOO : 230330 Z  
MCN : NONE

CONSULT CRYPTO CENTER BEFORE DECLASSIFYING

Paraphrase not required. Handle as correspondence of classification carried hereon per paragraphs 17a(1)(2) and 41c(2)(3) and g(1), AR 380-5, 15 November 1949.

COPY No.



DECLASSIFIED

Authority NND975029

0  
1  
2  
3  
4  
5  
6  
7  
8  
9  
10  
11  
12  
13  
14  
15  
16  
17  
18  
19  
20  
21  
22  
23  
24  
25  
26  
27

*[Faint, illegible text]*

*[Small blue mark]*

RECEIVED  
23 OCT 1950  
G-4  
GHO  
1 2 3 4 5 6 7 8 9 10 11 12 13 14 15 16 17 18 19 20 21 22 23 24 25 26 27 28 29 30



G-4 ROUTING	
AC/SG-1	<i>MMO</i>
DA C/SG-4	
EXECUTIVE	<i>MMO</i>
TO	
C+RE	
SUPPLY	
PETROLEUM	
KEA	
ADMIN	<i>MMO</i>

GENERAL HEADQUARTERS  
FAR EAST COMAND

OUTGOING MESSAGE

Paraphrase not required. Consult crytocenter before

decids. Handle as corr of clas carried bereon per pars

17a(1)(2) and 41c(2)(3) and (1) AB380-5.15 Nov 49.

TO-M AIR:FAH:DKD:5

*Restricted*

FROM: CINCFF TOKYO JAPAN *31/1/4* *221017*

TO : CG X CORPS KOREA ..... PRIORITY

INFO: CG FEAF TOKYO JAPAN..... PRIORITY (COURIER)

CG 1503RD ATW MATS HANEDA JAPAN ... PRIORITY (COURIER)

*C x 67163*

Reurmsg 211826I courier flights delay to date have been in each instance because of mechanical difficulties. Every effort being made to dispatch daily courier plane to Wonsan in accordance CINCFF msg CX 66659.

OFFICIAL:

APPROVED:

K. B. BUSH  
Brigadier General USA  
Adjutant General

H. T. MILLER  
Colonel, TC  
Transportation Officer

*6-4*

Copies to:  
ROK  
Ch GHQ UNC Ln Sec  
Trans (5 cys)

MEMO FOR ACTION

22 October 1950

1. Instant msg is reply to X Corps inquiry as to status of the daily courier plane.

2. Action initiated and completed on Trans Jo. No. 2518.

D. K. D. *15* 26-7965

*Restricted*



G-4 ROUTING

AC/SG-4

DA C/SG-4

EXECUTIVE

P+O

CORE

SUPPLY

PETROLEUM

KEA

ADMIN

GENERAL HEADQUARTERS  
FAR EAST COMMAND

OUTGOING MESSAGE

TO-M ELR/LAH/DKD/ert

**G-4 FILE**

*Secret*

**220411**

*3/11/51*

FROM: CINCFE TOKYO JAPAN

TO: CG FEAF TOKYO JAPAN.....PRIORITY (COURIER)

INFO: CG ARMY EIGHT KOREA.....PRIORITY

CG X CORPS KOREA.....PRIORITY

CG 1503RD ATW MATS HANEDA JAPAN....PRIORITY (COURIER)

**Cx 67145**

Reference CINCFE msg CX 66659, 17 Oct 50, and FEAF msg AX 5375 OP-OP, 17 Oct 50, regarding two courier flights, trips 285-286 and 287-288, operated by 1503rd MATS.

Desire no changes or deviation from the announced schedule be made without prior coordination with CINCFE (AIRTRAN, 26-7965). Desire earliest possible notification of mechanical failures or weather conditions which preclude adherence to daily schedule or arrival at final destination. Purpose of flights is to insure CINCFE daily airlift of high priority courier material and personnel to and from destinations indicated.

OFFICIAL:

APPROVED:

K. B. BUSH  
Brigadier General, USA  
Adjutant General

H. T. MILLER  
Colonel TC  
Transportation Officer

Copies to: ROK, G-4 P&O, Trans (5 cys)

*Paraphrase not required. Consult cryptocenter before  
decias Handle as per of clas carried hereon per pars  
17a(1)(2) and 4lc(2)(3) and g(1) AR 380-5.15*

20 October 1950

MEMO FOR RECORD:

1. On 18 Oct courier flight 287-288 developed mechanical trouble and did not depart. GHQ was not notified until 1500 hours, same day.
2. On 20 Oct courier flights 285-286 and 287-288 were consolidated by MATS into one flight departing at 0900. Information was not received

*Secret*



Secret

M/R (cont'd)

until 0845, 20 Oct.

3. Trans (Maj Dukes) discussed the above with 1503rd MATS (Capt Rowley, USN) on 20 Oct and received assurance that every effort would be made to preclude future deviations and to furnish GHQ Trans with advance information.

4. Instant msg considered necessary to establish officially the high priority and importance placed upon these two flights by CINCFE.

5. Instant msg routed thru G-4 for approval prior to dispatch.

6. Action initiated and suspended on Trans Jo. No. \_\_\_\_\_ until 26 Oct, pending approval from G-4.

DKD \_\_\_\_\_ 26-7965



Secret



GENERAL HEADQUARTERS, FAR EAST COMMAND  
ADJUTANT GENERAL'S OFFICE  
RADIO AND CABLE CENTER

G-4 ROUTING	<i>Hrs, sec</i>
A C/S G-4	
DA C/S G-4	
EXECUTIVE	<i>B</i>
P+O	
G-4 FILE	<i>FILE</i>
SUPPLY	
PETROLEUM	<input checked="" type="checkbox"/>
KEA	
ADMIN	<i>tm</i>
21 Oct 50	

# INCOMING MESSAGE

*Secret*  
PRIORITY

FROM : CG X CORPS  
TO : CINCFE TOKYO JAPAN  
NR : 211826 I

*311.4*

*Fjt*

Ref your msg DTG 170801 Z. Last courier plane arrived here  
19 Oct: Have courier flights K-25 been discontinued? K-25  
fully operational for courier plane. Continuation essential.

NO SIG

ACTION : TRANS

INFORMATION : COMMANDER IN CHIEF, CHIEF OF STAFF, G-1, G-2, G-3,  
G-4, AG, AG MAIL & RECORDS BR, CHEMICAL, ENGINEER,  
JSPOG, ORDNANCE, QUARTERMASTER, SIGNAL, SURGEON

NOTE : Ref msg DTG 170801 Z is CINCFE msg CX 66659. (TRANS)

68626

PRIORITY  
*Secret*

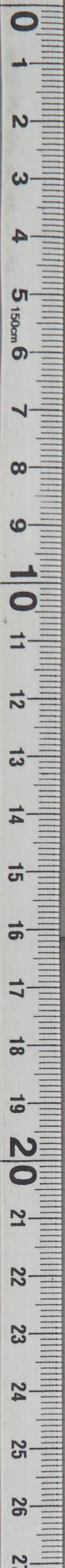
TOO : 211826 I  
MCN : 88336

CONSULT CRYPTO CENTER BEFORE DECLASSIFYING

Paraphrase not required. Handle as correspondence of classification  
carried hereon per paragraphs 17a(1)(2) and 41c(2)(3) and g(1),  
AR 380-5, 15 November 1949.

COPY No.





THE FOLLOWING MESSAGE

*[Handwritten signature]*  
PRIORITY

21 Oct 50

FROM : CG X CORPS

TO : CINCPAC TOKYO JAPAN

NR : 21826 1

Ref your msg DTG 170801 Z. Last courier plane arrived here  
10 Oct. Have courier flights K-25 been discontinued? K-25  
fully operational for courier plane. Confirmation essential.

NO SIG

ACTION : TRANS

INFORMATION : COMMANDER IN CHIEF, CHIEF OF STAFF, G-1, G-2, G-3,  
G-4, AG, AG MAIL & RECORDS BR, CHIEF OF STAFF, ENGINEER,  
SPOC, CHIEF OF STAFF, QUARTERMASTER, SIGNAL, SURGEON

NOTE : Ref msg DTG 170801 Z to CINCPAC msg CX 6655. (TRANS)

*[Handwritten signature]*  
PRIORITY

28658

TOO  
MCR 6181  
03336  
RECEIVED  
22 OCT 1950  
G-4  
G-4  
G-4  
01 02 03 04 05 06 07 08 09 10 11 12 13 14 15 16 17 18 19 20 21 22 23 24 25 26 27



311.4  
x 580  
x 300 King  
G-4 PLANS AND OPERATIONS

19 October 1950

MEMORANDUM FOR: General Eberle *ME*

SUBJECT: Courier Flight to Kimpo Airfield

G-4  
FILE

1. Reference is made to letter from General Almond to General Beiderlinden, 16 Oct 50 concerning subject flight.
2. CG FEAF msg AX 8426 OP-OP, 4 Oct 50 to CG 5th AF Adv, CG 5th AF REAR and CG FEAF Base requested necessary action be taken to insure GHQ personnel and small items of cargo have priority over all other personnel and cargo on this courier flight.
3. Cited letter indicates a courier was bumped on return flight 14 Oct 50. An investigation of MATS Manifests as reported by Transportation Officer (Maj Cakalic) reveals that 21 passengers were manifested from Kimpo to Haneda on that date. Seven were VIP's all of whom were Turkish Nationals with the exception of one American Ln Officer. No passengers were bumped or scratched for "No show." The Couriers, Lt R. B. Richmond and Lt O. B. Wright returned on this flight.
4. An investigation of MATS Manifest for 15 Oct 50 as reported by Transportation Officer (Maj Cakalic) reveals that 25 passengers were manifested. The Courier returned as scheduled. Two passengers were scratched for "No show" after awaiting them at Kimpo for 1½ hours. Maj Gen Sams was aboard on this flight.
5. There appears to be an error in the information furnished G-4.
6. Transportation Officer (Maj Dukes) is taking action to eliminate possibility of couriers being bumped on future flights.

*N.M.W.*  
N.M.W.*P40*  
*15181**gm*



G-4 PLANS AND OPERATIONS

19 October 1950

MEMORANDUM FOR: General Torgler

SUBJECT: Courier Flight to Kimpo Airfield

1. Reference is made to letter from General Almond to General Torgler, 18 Oct 50 concerning subject flight.

2. CG TORG, msg 01 0430Z OCT 50, 4 Oct 50 to CG USAF AF Adv, CG USAF AF Base and CG USAF Base suggested necessary action be taken to insure GHP personnel and small items of cargo have priority over all other personnel and cargo on this courier flight.

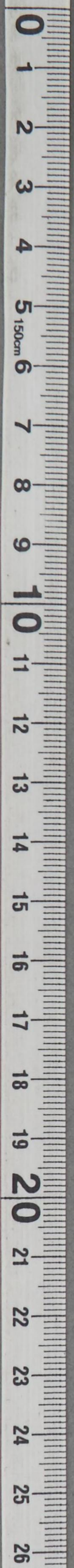
3. Cited letter indicates a courier was bumped on return flight 14 Oct 50. An investigation of MATS manifests as reported by Transportation Officer (Maj) Cahill reveals that 21 passengers were manifested from Kimpo to Hanoi on that date. Seven were VIP's all of whom were Turkish Nationals with the exception of one American in Officer. No passengers were bumped or scratched for "No show." The Couriers, Lt E. E. Richmond and Lt O. E. Wright returned on this flight.

4. An investigation of MATS Manifest for 13 Oct 50 as reported by Transportation Officer (Maj) Cahill reveals that 25 passengers were manifested. The Courier returned as scheduled. Two passengers were scratched for "No show" after waiting them at Kimpo for 1 1/2 hours. Maj Gen Sans was aboard on this flight.

5. There appears to be an error in the information furnished

6. Transportation Officer (Maj) Jones) is taking action to eliminate possibility of couriers being bumped on return flights.

M.W.





DECLASSIFIED

Authority NND975029

GENERAL HEADQUARTERS  
OFFICE OF THE ASSISTANT CHIEF OF STAFF  
G-1

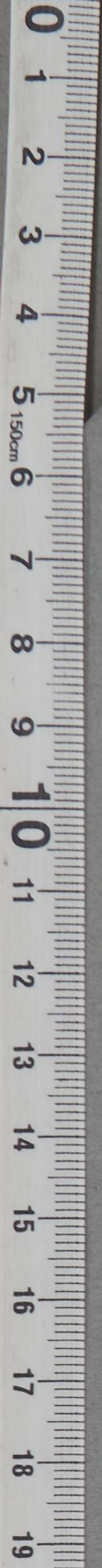
~~XX~~  
A  
280

18 Oct 50

MEMO FOR: General Eberle

While this was addressed to me I believe it is in your bailiwick. Will you please take the action?

*W. A. B.*  
W. A. B.





DECLASSIFIED  
Authority NND975029



GENERAL HEADQUARTERS  
OFFICE OF THE ASSISTANT CHIEF OF STAFF  
13 Oct 50

MEMO TO : General [unclear]

This [unclear] was addressed to me I believe it is in your [unclear]. Will you please take the [unclear].





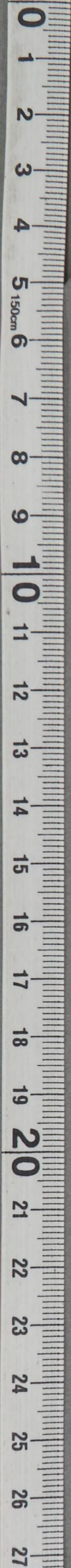
ag advises that ag is arranging to safe  
hand thru x copies courier 3 copies each of  
Stons & Slupis and Nippon Times personally to  
General Almond.

T1+E officer (Col Stoth) states that they  
are delivering a bundle of newspaper by x  
copies courier each day to HQ x copies.

Fgt

Pl- advise what you find out about  
the courier being bumped.

Fgt





HEADQUARTERS  
X CORPSOFFICE OF THE COMMANDING GENERAL  
APO 909

16 October 1950

Major General W. A. Beiderlinden,  
Assistant Chief of Staff, G-1,  
GHQ, Far East Command,  
APO 500

Dear Bill:

3-4 The courier that came to us today from Tokyo brought no daily papers and stated that nobody at GHQ had suggested it nor did he know that he was supposed to bring them. One of the purposes of having this liaison plane set up was to enable us here to have news of Tokyo and the world more than the limited radio service that we get. As a result of his failure, and the failure of the previous day's liaison officer, we have had no Tokyo papers since 12 October for the Nippon Times and 11 October for the Stars and Stripes. The courier reports further that the day before yesterday, on his return trip, he was bumped from the regular courier run for a General Officer and his party and therefore had to bum his way by transport as best he could with what we consider important official communications for GHQ.

AG My original idea of establishing a courier between this headquarters and GHQ was to serve as an official communication agency which should not be at the mercy of itinerant visitors and their parties, such as displayed recently. Even if the General Officer was compelled to make the trip, members of his party are not as important as an official courier should be. Therefore, he should have a status that does not permit any local airfield to deprive him of his passage. However, it would be appreciated if the courier reports to the Secretary, General Staff, before departure each day in order that we can be assured of daily papers as a service to our staff here. It has been arranged to drop courier service by plane during the trip that we are about to embark upon tomorrow, but perhaps your looking into this courier plane will insure this policy.

3-4 We have further made the effort to establish through GHQ (G-4 I believe) the same courier service between Tokyo and Wonsan that we have had from you to Kimpo. Please ask George Eberle if this is arranged for and, if it is not, set it up beginning as soon as possible since we have already established an advance Corps CP at Wonsan and now have some 30 officers and approximately 100 men. You can well realize what a help it will be to have a daily plane from Tokyo. Wonsan has an excellent airport which I visited 3 days ago and found operating under our Marine Air Wing with Gen. Harris in command. It is as simple to establish a C-47 plane service to Wonsan from Tokyo via Pusan as it is to Kimpo.

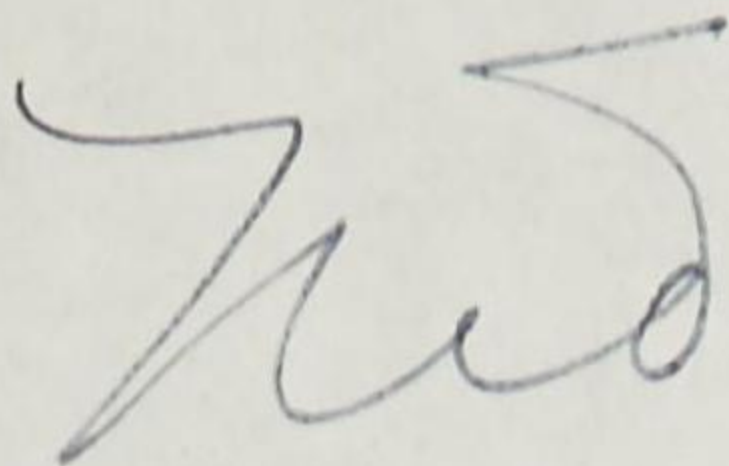
Any time after the 20th we will be prepared to receive any and all Corps visitors who may desire to come our way.

With best wishes.

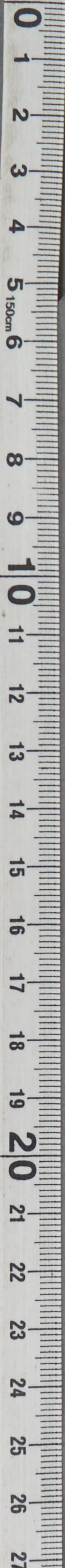


DECLASSIFIED

Authority NND975029



EDWARD M. ALMOND,  
Major General, United States Army,  
Commanding





DECLASSIFIED

Authority NN0975029

114

*[Handwritten signature]*

EDWARD M. ALMOND  
Major General, United States Army  
Commanding





*Paraphrase not required. Consult cryptocenter before  
decias. Handle ascort of clas carried before  
17a(1)(2) and 41c(2)(3) and g(1), AR 380-5.15 Nov 49*

GENERAL HEADQUARTERS  
FAR EAST COMMAND

OUTGOING MESSAGE

TO-M ELR/LAH/DKD/ert

*Secret*

G-4 ROUTING
AC/S G-4 <i>mg</i>
DAC/S G-4 <i>mg</i>
EXECUTIVE <i>mg</i>
P+O <i>mg</i>
TYPE
SUPPLY
PETROLEUM
180959 <i>mg</i>

*311.4*

FROM: CINCFE TOKYO JAPAN

TO: CG X CORPS KOREA.....FLASH

INFO: CG ARMY EIGHT KOREA.....FLASH  
CG FEAF TOKYO JAPAN.....PRIORITY (COURIER)  
CG 1503RD ATW MATS HANEDA JAPAN.....PRIORITY (COURIER)

**C x 66775**

Initial courier flight to Wonsan, 18 Oct, developed mechanical trouble and forced to return Haneda. Passengers and cargo will be lifted on courier flight, same schedule, of 19 Oct.

OFFICIAL:

APPROVED:

K. B. BUSH  
Brigadier General, USA  
Adjutant General

H. T. MILLER  
Colonel TC  
Transportation Officer

Copies to: ROK, G-4 P&O, Trans (5 cys)

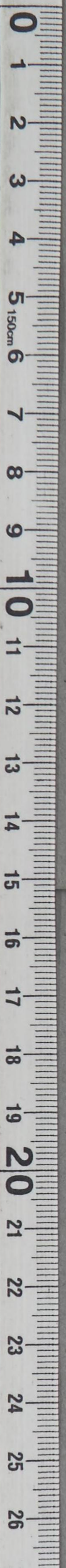
18 October 1950

MEMO FOR RECORD:

1. Information received from MATS (Comd Johnson) 1500 hours, 18 Oct, that courier plane developed mechanical trouble and was unable to make scheduled flight to destination. Plane returned to Haneda AFB.
2. Information telephoned to G-4 (Lt Col Ruhlen) who advised that G-4 would notify the necessary persons in GHQ of the delay and for Trans Sec to send instant msg.
3. MATS advised that plane would be repaired and flight on 19 Oct would depart as scheduled.
4. Action initiated and completed on Trans Jo. No. \_\_\_\_\_.

DKD *AS* 26-7965

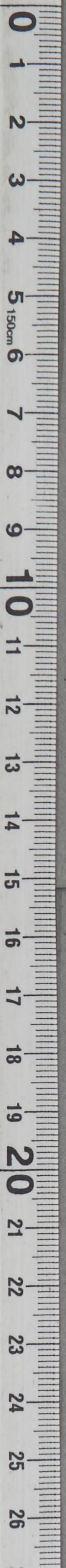
*Secret*





DECLASSIFIED

Authority NND975029



RECEIVED  
18 OCT 1950





GENERAL HEADQUARTERS, FAR EAST COMMAND  
ADJUTANT GENERAL'S OFFICE  
RADIO AND CABLE CENTER

G-4 ROUTING	
AC/S G-4	<i>[Signature]</i>
DA C/S G-4	<i>[Signature]</i>
EXECUTIVE	<i>[Signature]</i>
P+O	<i>[Signature]</i>
C+RE	<i>[Signature]</i>
EFF/bc SUPPLY	<i>[Signature]</i>
G-4 FILE	<i>[Signature]</i>
PETROLEUM	<i>[Signature]</i>
KEA	<i>[Signature]</i>
ADMIN	<i>[Signature]</i>
17 Oct 50	

# INCOMING MESSAGE

*[Handwritten: Secret]*  
**OPERATIONAL IMMEDIATE**  
*[Handwritten: Restricted]*

FROM : CG FEAF TOKYO JAPAN

TO : CG 5TH AF ADV, CG 5TH AF NAGOYA AFB JAPAN, CG FEAF COCARCOM  
PROV ASHIYA AFB JAPAN, CG FEAF BOMB COMD YOKOTA AFB JAPAN,  
CINCPAC TOKYO JAPAN, CG 20TH AF KADENA AB OKINAWA, CG 2143D  
ANW TOKYO JAPAN, CG 1308TH AACS WG TOKYO JAPAN, COMNAVFE  
TOKYO JAPAN, CG FEAMCOM TACHIKAWA AB JAPAN, CG FEAF BASE  
TOKYO JAPAN, CG MATS HANEDA AB JAPAN, CG X CORPS, CG ARMY  
EIGHT

NR : AX 5375 OP-OP

*311.4*

Subj is Daily Courier Flights. This rad in 5 parts.  
part 1. This rad rescinds all previous rads pertaining to  
daily courier flts sched by this hq and which operate within  
Japan and between Japan and stations in Korea.

part 2. Eff 18 Oct 50, organizations noted herein will be  
operating daily sched courier flts as indicated until further  
notice:

a. FEAF Base will operate fol daily sched courier flt  
in C-47 acft (this flt previously operated by contract w/CAT):  
FEAF courier No 1 (strike photos, priority mail and PAX). Dep  
Haneda 0630, arr Komaki 0800, dep Komaki 0830, arr Iwakuni 1015;  
dept Iwakuni 1045, arr Ashiya 1130; dep Ashiya 1200, arr Itazuke  
1215; dept Itazuke 1330, arr Iwakuni 1415; dep Iwakuni 1445, arr  
Komaki 1630; dep Komaki 1700, arr Haneda 1830.

b. 1503d ANW, MATS will operate 2 daily sched courier  
flts in C-54 acft as foils:

(1) Trip 285-286 (Priority PAX, cargo and mail). Dep  
Haneda 0900, arr K-9 1300; dep K-9 1530, arr K-14 1500; dep K-14  
1600, arr Haneda 2030.

(2) Trip 287-288 (priority PAX, cargo and mail). Dep  
Haneda 1000, arr K-25 1530; dep K-25 1630, arr Haneda 2130.

(over)

65513

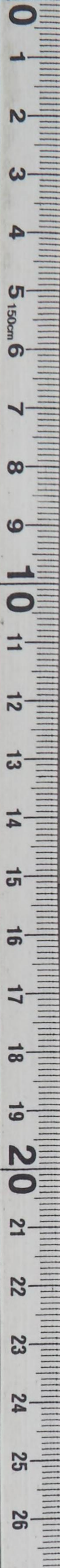
**OPERATIONAL IMMEDIATE**

*duh, FEAF RADIO  
8698 OP-OP  
(250 x 50)*

CONSULT CRYPTO CENTER BEFORE DECLASSIFYING

Paraphrase not required. Handle as correspondence of classification  
carried hereon per paragraphs 17a(1)(2) and 41c(2)(3) and g(1),  
AR 380-5, 15 November 1949.

COPY No.





~~Secret~~  
OPERATIONAL IMMEDIATE

FROM : CG FEAFF \_\_\_\_\_ NR : AX 5375 OP-OP \_\_\_\_\_ 17 OCT 50 \_\_\_\_\_ CONT'D

c. COCARCOM will operate two daily sched courier flts in C-46 acft as fols:

(1) Trip 301 (primarily mail) dep Tachikawa 0700, arr Ashiya 1030; dep Ashiya 1130, arr K-9 1230; dep K-9 1330, arr K-2 1400; dep K-2 1500, arr Ashiya 1630; dep Ashiya 1730, arr Tachikawa 2100.

(2) Trip 302 (primarily mail). Dep Tachikawa 0630, arr Komaki 0830; dep Komaki 0930, arr Ashiya 1130; dep Ashiya 1200, arr K-14 1430; dep K-14 1530, arr Ashiya 1800; dep Ashiya 1830, arr Komaki 2030; dep Komaki 2100, arr Tachikawa 2230.

Part 3. FEAFF Courier Flt No 2 (operated by contract w/CAT) from Haneda to Itazuke, K-9, K-2 and return is cancelled eff 18 Oct 50.

Part 4. Changes in above established courier sched will not be made without prior coordination with and approval of this hq.

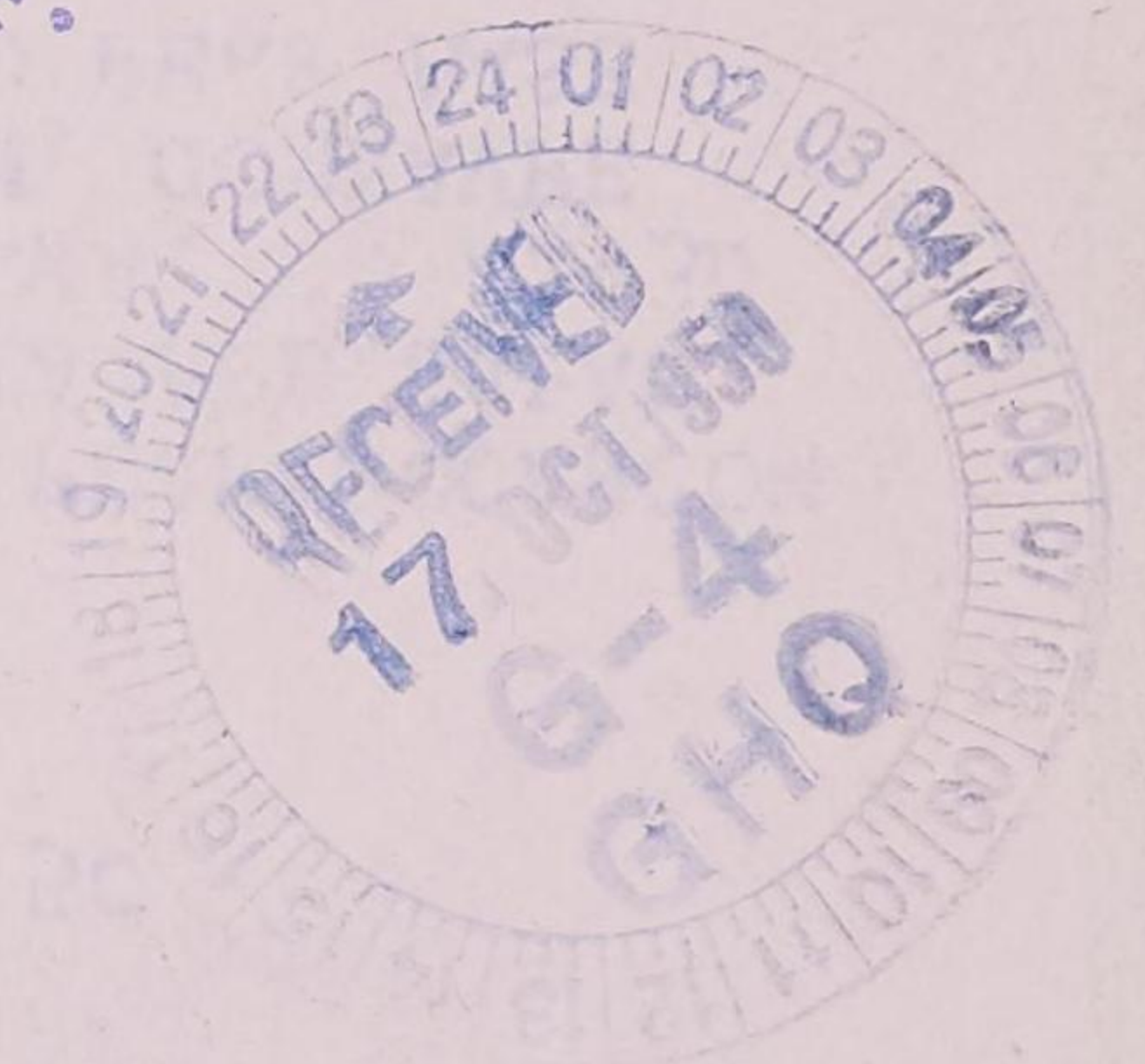
Part 5. All requests for airlift on FEAFF Courier No 1 w/b made to this hq, phone Meiji 439 or 588; on MATS Trips, 0800 to 1700, phone Tokyo 26-6898, other times phone 26-6050.

NO SIG

ACTION : AG MAIL & RECORDS BR

INFORMATION : COMMANDER IN CHIEF, CHIEF OF STAFF, G-1, G-2, G-3, G-4, AG, AG OPNS DIV, TRANS, COMNAVFE

NOTE : This msg recd direct from CG FEAFF via Courier.



65518

~~Secret~~  
OPERATIONAL IMMEDIATE

TOO : 170940 Z  
MCN : NONE



GENERAL HEADQUARTERS, FAR EAST COMMAND  
ADJUTANT GENERAL'S OFFICE  
RADIO AND CABLE CENTER

**FLASH**  
**INCOMING MESSAGE**

*COURTESY COPY*

*Secret*  
**FLASH**

*311.4*

G-4 ROUTING

A C / S G-4

D A C / S G-4

EXECUTIVE

P + O

C + R E

S U P P L Y

P E T R O L E U M

K E A D

A D M I N

WG/SWJ

17 Oct 50

*[Handwritten signature]*

**FILE**

*RF*

FROM : CG X CORPS

TO : CINCFE (ATTN GEN EBERLE) TOKYO JAPAN

NR : X 10943

Request confirmation courier Tokyo to Wonsan starting D-Day.

ALMOND

REVISED (17 Oct 50).

ACTION : TRANS

INFORMATION : COMMANDER IN CHIEF, CHIEF OF STAFF, G-4, AG,  
AG MAIL & RECORDS BR, SIGNAL

64878

**FLASH**

TOO : 162345 I

MCN : 87000

*Secret*  
*Declassified*

*Per Auth  
X Corps Lbr  
AGC 312.1 90005*

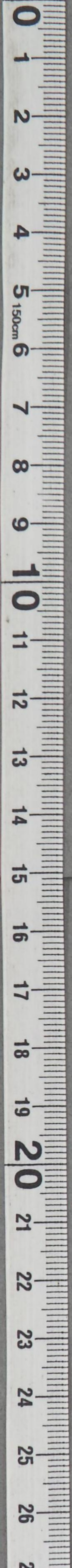
**FLASH**

CONSULT CRYPTO CENTER BEFORE DECLASSIFYING

Paraphrase not required. Handle as correspondence of classification carried hereon per paragraphs 17a(1)(2) and 41c(2)(3) and g(1), AR 380-5, 15 November 1949.

COPY No.





RECEIVED  
17 OCT 1950  
G-4  
GHQ



SECRET

SC EX GIB/njc

17 Oct 50

311.4

*M. Eberle*

FROM: OIC GHQ FEC COMCENTER  
TO: OIC MT McKINLEY COMCENTER.....OPERATIONAL IMMEDIATE

Memo 4520jc TO MARCY SIGNED BACK PD PLEASE PASS TO GEN ALMOND  
QUOTE WONSAN COURIER FLIGHT STARTS ONE EIGHT OCT PD SCHEDULE AS FOLLOWS  
CLN ETD HANEDA ONE ZERO ZERO ZERO ITEM CMA ETA WONSAN ONE FIVE THREE  
ZERO ITEM CMA ETD WONSAN ONE SIX THREE ZERO ITEM CMA ETA HANEDA TWO  
ONE ZERO ZERO ITEM PD OFFICIAL MSG SAME CONTENT BEING DISPATCHED  
YOUR HQS PD SIGNED EBERLE UNQUOTE

Copy to Maj Gen Eberle, G-4

Copy for Gen Eberle

SECRET





GENERAL HEADQUARTERS, FAR EAST COMMAND  
ADJUTANT GENERAL'S OFFICE  
RADIO BRANCH

G-4 ROUTING

AC/S G-1 *MB*

DA C/S G-4

EXECUTIVE *3*

P+O

C+RE

*EFF/WO*

UPPL

PETROLEUM

KEA

*16 Oct 50*

# INCOMING MESSAGE

*Restricted*

PRIORITY

*G-4 FILE*

*16 Oct 50*

FROM : CG ARMY EIGHT  
TO : DEPTAR (TAG) WASH DC  
INFO : CINCPAC TOKYO JAPAN  
NR : G 26150 KAGAPO

*311.4*

*Perth*

Courier transfer sta Taegu, Korea discontinued 15 Oct 50.  
Courier trans FEC sta Seoul, Korea reopened 16 Oct 50. Capt  
Charles V Burto 01318128. 1st Lt Theodore S Long 01001398  
courier transfer officers.

NO SIG

INFORMATION : COMMANDER IN CHIEF, CHIEF OF STAFF, G-1, G-2, G-3,  
G-4, AG, AG OPNS DIV, AG MAIL & RECORDS BR, SIGNAL

64695

PRIORITY

*Restricted*

TOO : 152047 I

MCN : 86904

CONSULT CRYPTO CENTER BEFORE DECLASSIFYING

Paraphrase not required. Handle as correspondence of classification  
carried hereon per paragraphs 17a(1)(2) and 41c(2)(3) and g(1),  
AR 380-5, 15 November 1949.

COPY No.



HEADQUARTERS, FAR EAST COMMAND  
ADJUTANT GENERAL'S OFFICE  
MAIL BRANCH

INCOMING MESSAGE

RFB/wp

*[Handwritten signature]*

PRIORITY

16 Oct 50

FROM : CG ARMY EIGHT

TO : DEPTAR (TAG) WASH DC

INFO : CINCPAC TOKYO JAPAN

NR : G 25150 KAGAWA

Courier transfer via Tagan, Korea discontinued 15 Oct 50.  
Courier trans POC via Seoul, Korea resumed 15 Oct 50. Capt  
Charles V Burgo 01718158, 1st Lt Theodore S Long 01001398  
courier transfer officers.

NO SIG

INFORMATION : COMMANDER IN CHIEF, CHIEF OF STAFF, G-1, G-2, G-3,  
G-4, AG, AG OPS DIV, AG MAIL & RECORDS BR, SIGNAL

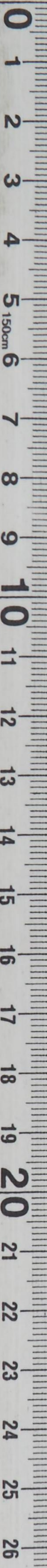
TOO : 155047 I  
MCM : 8904



64625

COMMUNICATIONS CENTER RECORD DECLASSIFYING

Information not recorded. Handle as correspondence of classification  
control status per paragraphs 17a(1)(2) and 17a(2)(3) and 17b(1)  
in 250-71, November 1919.





G-4 ROUTING

AC/SG-4	
DAC/SG-4	
EXECUTIVE	
P+O	
C+RE	
SUPPLY	
PETROLEUM	
KEA	
ADMIN	

GENERAL HEADQUARTERS  
FAR EAST COMMAND

161601

OUTGOING MESSAGE

AG-OB CHC JWC/vmk

*Restricted*

16 October 1950

*3114*

FROM: CINCPAC

TO: DA ..... ROUTINE

**C-66594**

For the Adjutant General. Reference your message W 94132.. Station not open yet. Change tactical situation precluded use as originally intended. Possibility exists future usage. Will continue to hold material.

OFFICIAL:

APPROVED:

/s/ K. B. Bush  
K. B. BUSH,  
Brigadier General, USA,  
Adjutant General.

/s/ Carl H. Cundiff  
CARL H. CUNDIFF  
Major, AGC  
Assistant Adjutant General

MEMO FOR RECORD: Radio from this headquarters requested DA to send the necessary material (registered classified keys, instructions, designation cards, etc.) for use in the opening of a security courier station. This station was intended for use of the X Corps and radio was dispatched at Corps' suggestion.

Due to change in the tactical situation, within Korea, the X Corps has not called upon this headquarters for this material and has not opened a security courier station.

Reference radio from DA requested details as to location, identity of selected officers, etc. Instant self-explanatory radio informs DA that station was not opened but that possibility does still exist that station will later be opened.

DISTRIBUTION: WOK, AG, AG OPN DIV

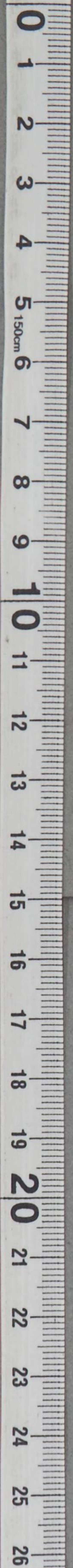
*Paraphrase not required. Consult crytocenter before declass. Handle as corr of clas carried bereon per pars 17a(1)(2) and 41e(2)(3) and g(1), AR 380-5.15 Nov 49.*

*Restricted*



DECLASSIFIED

Authority NND975029



RECEIVED  
↑  
OCT 17 1950  
G-4  
GHO



GENERAL HEADQUARTERS, FAR EAST COMMAND  
ADJUTANT GENERAL'S OFFICE  
RADIO AND CABLE CENTER

G-4 ROUTING

AC/S G-1	
DA C/S G-4	
EXECUTIVE	<i>W</i>
P+O	<i>7</i>
C+RE	
SUPPLY	
PETROLEUM	
1K Oct 50	
ADMIN	<i>WAP</i>

**INCOMING MESSAGE**

*PRIORITY*

FROM : CG X CORPS

TO : CINCPAC TOKYO JAPAN

NR : X 10929

*311.4*

*Perth*

Request info as to whether daily air courier service between Tokyo and objective area will start on D Day

NO SIG

ACTION : AG MAIL & RECORDS

INFORMATION : COMMANDER IN CHIEF, CHIEF OF STAFF, G-1, G-2, G-3, G-4, AG, SIGNAL, TRANS

64173

~~PRIORITY~~

TOO : 151127 Z  
MCN : 06695

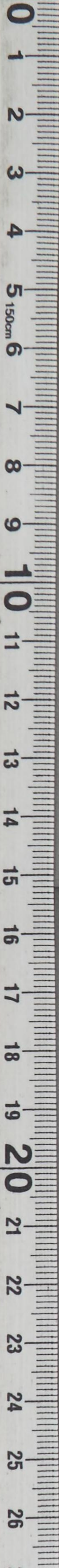
*Per Auth  
X Corps  
AG 312.1 9 Aug 50*

*Unclassified*

CONSULT CRYPTO CENTER BEFORE DECLASSIFYING

Paraphrase not required. Handle as correspondence of classification carried hereon per paragraphs 17a(1)(2) and 41c(2)(3) and g(1), AR 380-5, 15 November 1949.

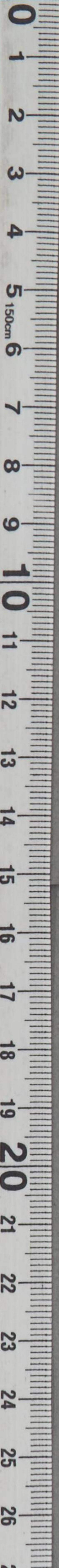
COPY No.





DECLASSIFIED

Authority NND975029



[Faint, illegible text covering the majority of the page, possibly bleed-through from the reverse side.]





GENERAL HEADQUARTERS, FAR EAST COMMAND  
ADJUTANT GENERAL'S OFFICE  
RADIO AND CABLE CENTER

G-4 ROUTING

A C/S G.	
DA C/S G-4	
EXECUTIVE	
P+O	
C+RE	
SUPPLY	
PETROLEUM	
JA/PJ/KEA	
ADMIN	<i>WAP</i>

# INCOMING MESSAGE

*[Signature]*  
**OPERATIONAL IMMEDIATE**

JA/PJ/KEA

ADMIN

12 Oct 50

FROM : CG X CORPS

TO : CINOPR TOKYO JAPAN *311.4*

INFO : CG PEARL TOKYO JAPAN, CG JLCOM YOKOHAMA JAPAN, CG ARMY  
RIGHT

NH : X-10856

Request Daily Courier Plane Service to be established between Haneda AB and Wonsan AB. Recommend fol schedule be established. Leave Haneda AB 0900 and leave Wonsan 1600. Schedule to become effective upon establishment of X Corps in the Wonsan Area.

NO SIG

ACTION : TRANS

INFORMATION : COMMANDER IN CHIEF, CHIEF OF STAFF, G-1, G-2, G-3, G-4, AG, AG MAIL & RECORDS BR, SIGNAL

62451

OPERATIONAL IMMEDIATE

TOG : 121812 I  
MCM : 85987

*Per [Signature]  
X Corps [Signature]  
AG 312.1 gans*

*[Signature]*  
**Declassified**

CONSULT CRYPTO CENTER BEFORE DECLASSIFYING

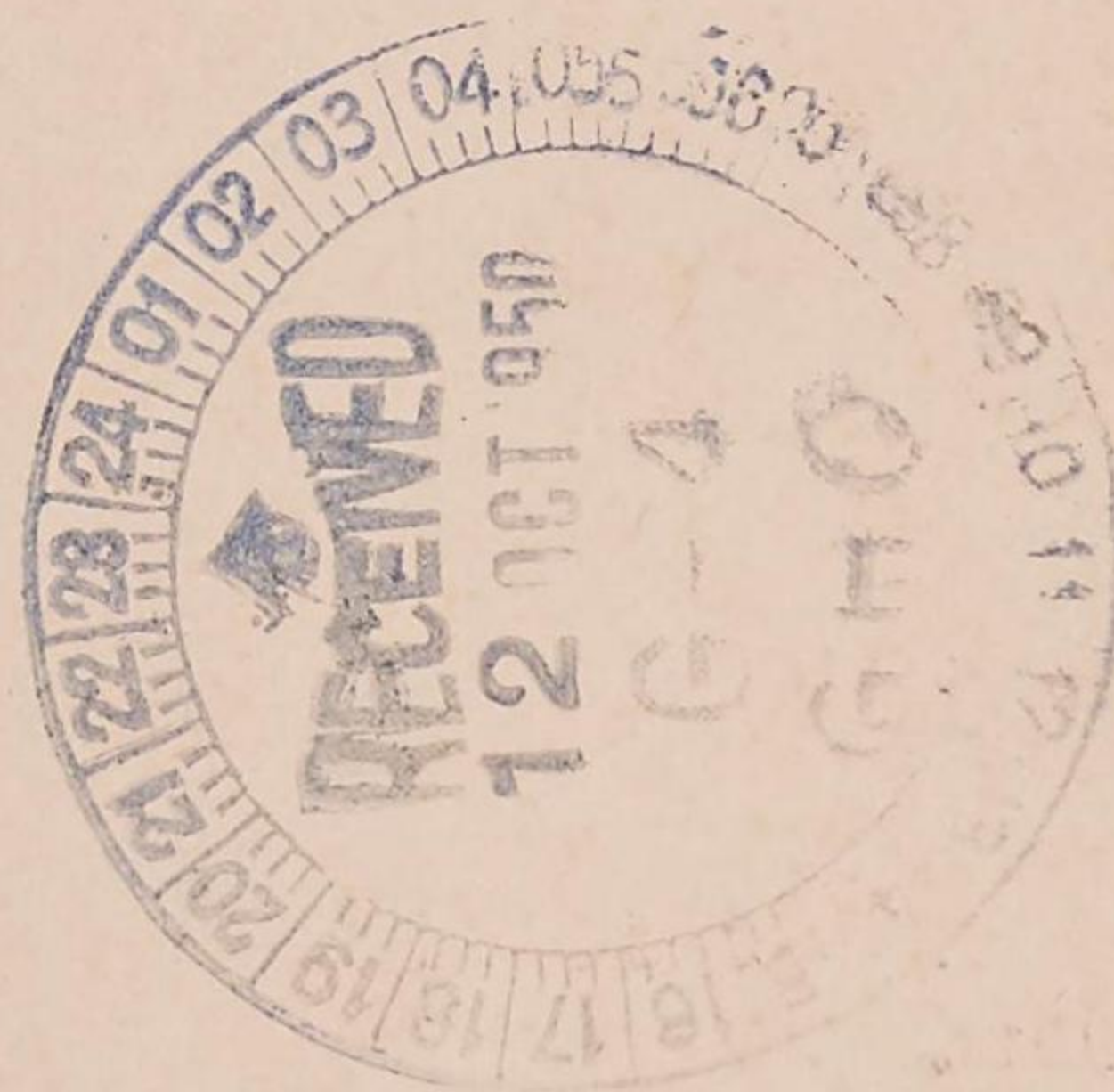
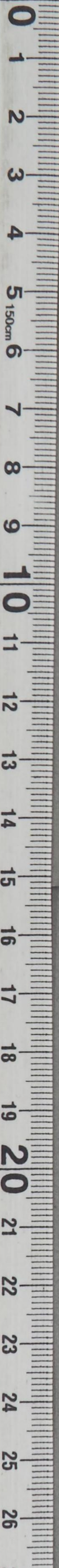
Paraphrase not required. Handle as correspondence of classification carried hereon per paragraphs 17a(1)(2) and 41c(2)(3) and g(1), AR 380-5, 15 November 1949.

COPY No.



DECLASSIFIED

Authority NND975029





Paraphrase not req. Consult cryptocenter before  
decias. Handle ascort of clas carried bereon per pars  
and 4lc (2x3) and (1) AR 380-5.15 Nov 49.

GENERAL HEADQUARTERS  
FAR EAST COMMAND

OUTGOING MESSAGE

TO-M ELR/LAH/DKD/ert

*Secret*

*311.4*

**071219**

FROM: CINCFE TOKYO JAPAN  
TO: CG EIGHTH ARMY KOREA .....PRIORITY  
CG X CORPS KOREA.....PRIORITY  
INFO: CG FEAF TOKYO JAPAN.....PRIORITY (COURIER)  
CG 1503RD ATW MATS HANEDA  
JAPAN.....PRIORITY (COURIER)

**Cx65788**

Request concurrence on GHQ daily Courier plane  
departing Kimpo 1500 instead of 1600 as currently in effect. Plane  
now departs Haneda 0900 and arrives Kimpo 1400.

G-4 ROUTING

OFFICIAL:

APPROVED:

K. B. BUSH  
Brigadier General, AGD  
Adjutant General

H. T. MILLER  
Colonel TC  
Transportation Officer

Copies to: ROK, GHQ UNC Ln Gp, Trans (5 cys)

AC/S G-4
DAC/S G-4
SECURITY
PRO
CYRE
SUPPLY
PETROLEUM
KEA
ADMIN <i>WMP</i>

7 October 1950

MEMO FOR RECORD:

1. Instant msg sent at request of 1503RD ATW MATS (Capt Stemmer).  
Altho plane does not depart Haneda until 0900 each day, the route now  
flown permits arrival at Kimpo by 1400 instead of 1500 as in the past.  
By moving departure up one hour plane will return to Haneda earlier and  
be available a greater number of hours for maintenance purposes.

2. Action initiated and suspended on Trans Jo. No. \_\_\_\_\_ until  
11 Oct.

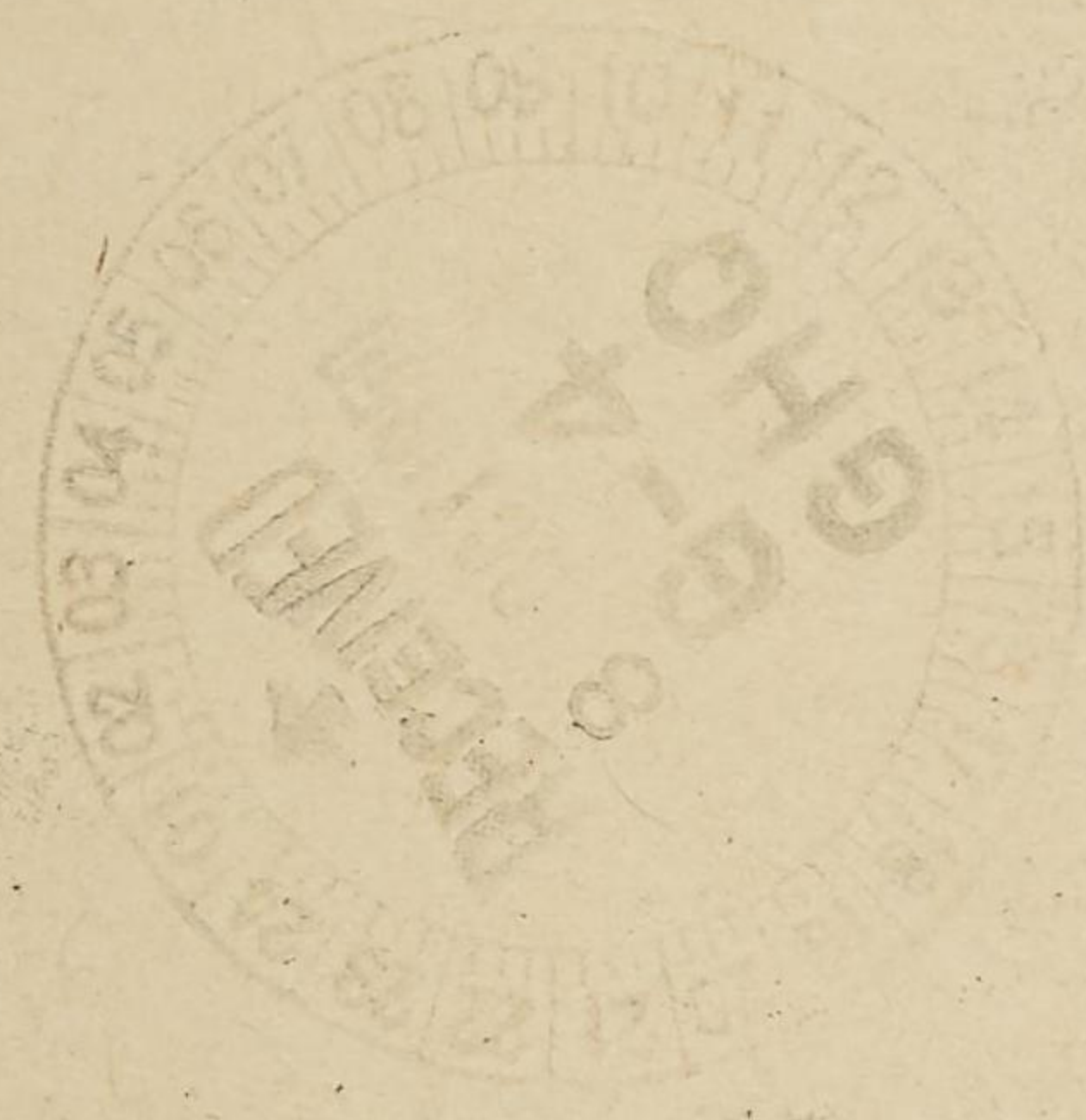
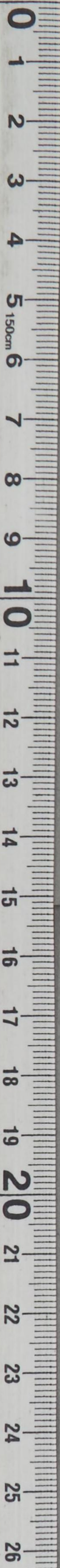
DKD 5 26-7965

*Secret*



DECLASSIFIED

Authority NND975029





**SECRET**

*311.4*

*6000*  
*See file*

GENERAL HEADQUARTERS  
FAR EAST COMMAND

Check Sheet

Lt Alford 26-6026

Subject: Use of Courier Service

Note  
No.  
2

From: G-4

To: All Division Chiefs

Date: 5 Oct 50

For information and guidance.

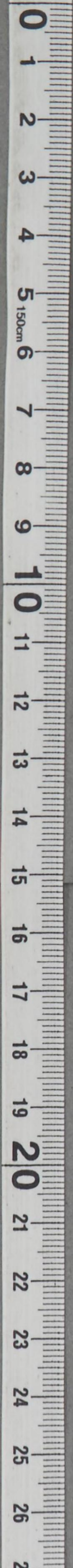
*M. E.*

- cc: Exec ✓
- Admin
- C&RE
- KEA
- P&O
- Petr
- Supply

*Pen*

Exec

**SECRET**





DECLASSIFIED

Authority NND975029

*Secret*

GENERAL HEADQUARTERS  
FAR EAST COMMAND

Check Sheet

Maj Barford 26-5740

File No: AG 311.4      Subject: Use of Courier Service  
(4 Oct 50)AG

Note From: AG      To: Chiefs of All Staff      Date: 4 October 1950  
No.      Sections, GHQ, SCAP & FEC

1.

1. Office Courier Service has been established between GHQ and the forces in Korea for the purpose of expediting delivery of high priority material. Adequate postal channels are available for the dispatch of low priority material other than that indicated in paragraph 2 below to all parts of Korea in which UN troops are stationed.

2. Air cargo facilities are available for transmission of high priority material which because of the size or weight cannot be carried by the officer courier. GHQ cargo destined for Korea by air lift receives high priority and usually is delivered at destination within 24 hours after receipt at Tachikawa. The use of air cargo facilities is limited to official emergency requirements only.

3. Chiefs of Staff Sections having material of the nature of that indicated in paragraph 2 above for transmission should contact the Air Transportation Office, ~~64~~, GHQ, 26-6455 for necessary information without reference to the AG Mail and Records Branch. If required, the Air Transportation Officer will provide assistance in dispatching large or heavy material as air cargo to Korea. It is the responsibility of the Chief of the Staff Section concerned, with such assistance which may be provided by the Air Transportation Officer, to deliver the air cargo material to Tachikawa Air Base for loading on the plane.

4. The facilities available to air cargo operations do not include the required safeguards afforded classified material. Classified material not to be carried by the courier should be placed in postal channels if classification is below Top Secret and in Security Courier Channels if Top Secret.

a. Information concerning postal channels can be obtained from the AG Postal Branch, 26-7263.

b. Information concerning security courier channels can be obtained from the Courier Transfer Office, CARGO (0391) 557 or 558.

5. The Chief of the AG Mail and Records Branch is responsible for the transmission of courier material only. Material such as that described in paragraph 2 above which is not suitable for courier transmission will not be received in the AG Mail and Records Branch.

*K. B. B.*

*Secret*



**SECRET**

GENERAL HEADQUARTERS  
FAR EAST COMMAND

*ce*

*3/11.4/*

Check Sheet

Lt Alford 26-6026

Subject: Use of Courier Service

Note  
No.  
2

From: G-4

To: All Division Chiefs

Date: 5 Oct 50

For information and guidance.

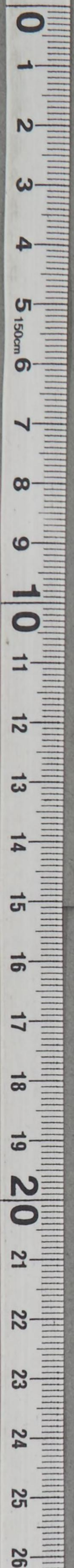
*for [Signature]*

- cc: Exec  
Admin  
C&RS  
KEA  
P&O  
Petr  
Supply

*✓*

G4 File

**SECRET**





*Secret*GENERAL HEADQUARTERS  
FAR EAST COMMAND

Check Sheet

Maj Barford 26-5740

File No: AG 311.4      Subject: Use of Courier Service  
(4 Oct 50)AGNote From: AG      To: Chiefs of All Staff      Date: 4 October 1950  
No.      Sections, GHQ, SCAP & FEC

1.

1. Office Courier Service has been established between GHQ and the forces in Korea for the purpose of expediting delivery of high priority material. Adequate postal channels are available for the dispatch of low priority material other than that indicated in paragraph 2 below to all parts of Korea in which UN troops are stationed.

2. Air cargo facilities are available for transmission of high priority material which because of the size or weight cannot be carried by the officer courier. GHQ cargo destined for Korea by air lift receives high priority and usually is delivered at destination within 24 hours after receipt at Tachikawa. The use of air cargo facilities is limited to official emergency requirements only.

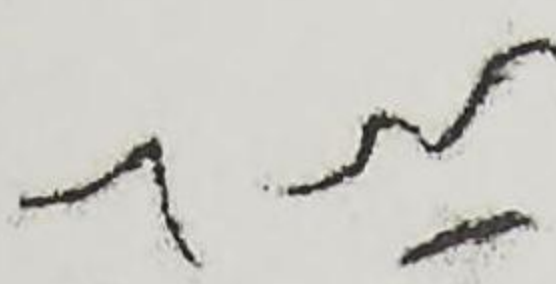
3. Chiefs of Staff Sections having material of the nature of that indicated in paragraph 2 above for transmission should contact the Air Transportation Office, ~~G-4~~, GHQ, 26-6455 for necessary information without reference to the AG Mail and Records Branch. If required, the Air Transportation Officer will provide assistance in dispatching large or heavy material as air cargo to Korea. It is the responsibility of the Chief of the Staff Section concerned, with such assistance which may be provided by the Air Transportation Officer, to deliver the air cargo material to Tachikawa Air Base for loading on the plane.

4. The facilities available to air cargo operations do not include the required safeguards afforded classified material. Classified material not to be carried by the courier should be placed in postal channels if classification is below Top Secret and in Security Courier Channels if Top Secret.

a. Information concerning postal channels can be obtained from the AG Postal Branch, 26-7263.

b. Information concerning security courier channels can be obtained from the Courier Transfer Office, CARGO (0391) 557 or 558.

5. The Chief of the AG Mail and Records Branch is responsible for the transmission of courier material only. Material such as that described in paragraph 2 above which is not suitable for courier transmission will not be received in the AG Mail and Records Branch.

  
K. B. B.*Secret*



G-4 ROUTING	
A C/S G-4	_____
DA C/S G-4	_____
EXECUTIVE	_____
P + O	_____
C + R	_____
SUPPLY	_____
PETROLEUM	_____
ADMIN	_____

SECRET

*311.1f*

GENERAL HEADQUARTERS  
FAR EAST COMMAND  
OUTGOING MESSAGE

GB/T Int/ECE/SNP/rep  
4 October 1950

FROM: CINCPAC TOKYO JAPAN

041217

TO : CG X CORPS . . . . . PRIORITY

**C-65452** Urmsg X 10452. Effective date new schedule daily  
courier acft 5 Oct 50.

OFFICIAL:

APPROVED:

K. B. BUSH  
Brig General, USA  
Adjutant General

J. H. POLK  
Lt Colonel, GSG  
Executive

*262  
: Trans  
Seet?*

- Copies to:
- CinC
  - Cofs (3)
  - G-1
  - G-3
  - G-4
  - AG Mail & Records Br
  - JSPOG
  - Signal
  - G-2 (Return)

*Paraphrase not required. All cryptocenter before  
decis. Handle as corr. of clas carried hereon per pars  
17a(1)(2) and 41c(2)(3) and g(1), AR 380-5.15 Nov 48.*

REFERENCE RADIO IS X 10452

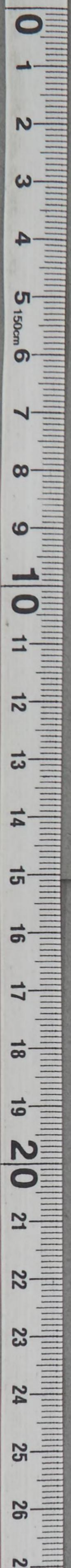
MEMO FOR RECORD:

Schedule for Daily courier acft from Haneda Air Base to Kimpo Air Base has been changed from a daily departure time of 0800I to 0900I. Message X10452 from CG X Corps concurred in new schedule and asked for effective date of schedule. This message notifies CG X Corps effective date is 5 Oct 50. FEAF has been notified by AG of this change in schedule. T/Int (Capt Young) has made arrangements for delivery of Daily Intel Summary to AG at 0730 hours daily, for delivery to X Corps.

SNP \_\_\_\_\_ 26-6021

*Everyone in the act  
except Trans O & USTW  
who run the course*

SECRET





SECRET

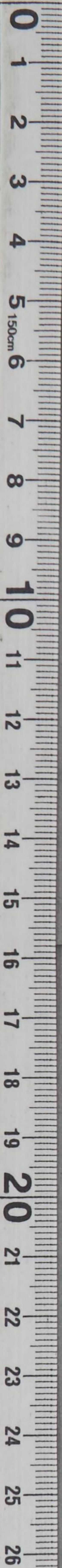
SECRET

SECRET

SECRET







ROUTING COMMUNICATIONS CENTER NO.

# JOINT MESSAGEFORM

G-4 ROUTING

①  
②  
③  
④

EXECUTIVE  
TO  
CORE  
SUPPLY  
PETROLEUM  
ADMIN

Mho  
311.4  
G-4

SPACE ABOVE FOR COMMUNICATIONS CENTER ONLY

**FROM: (Originator)**  
 CINCFE APO 500

**TO:**  
 CG FEAF APO 925

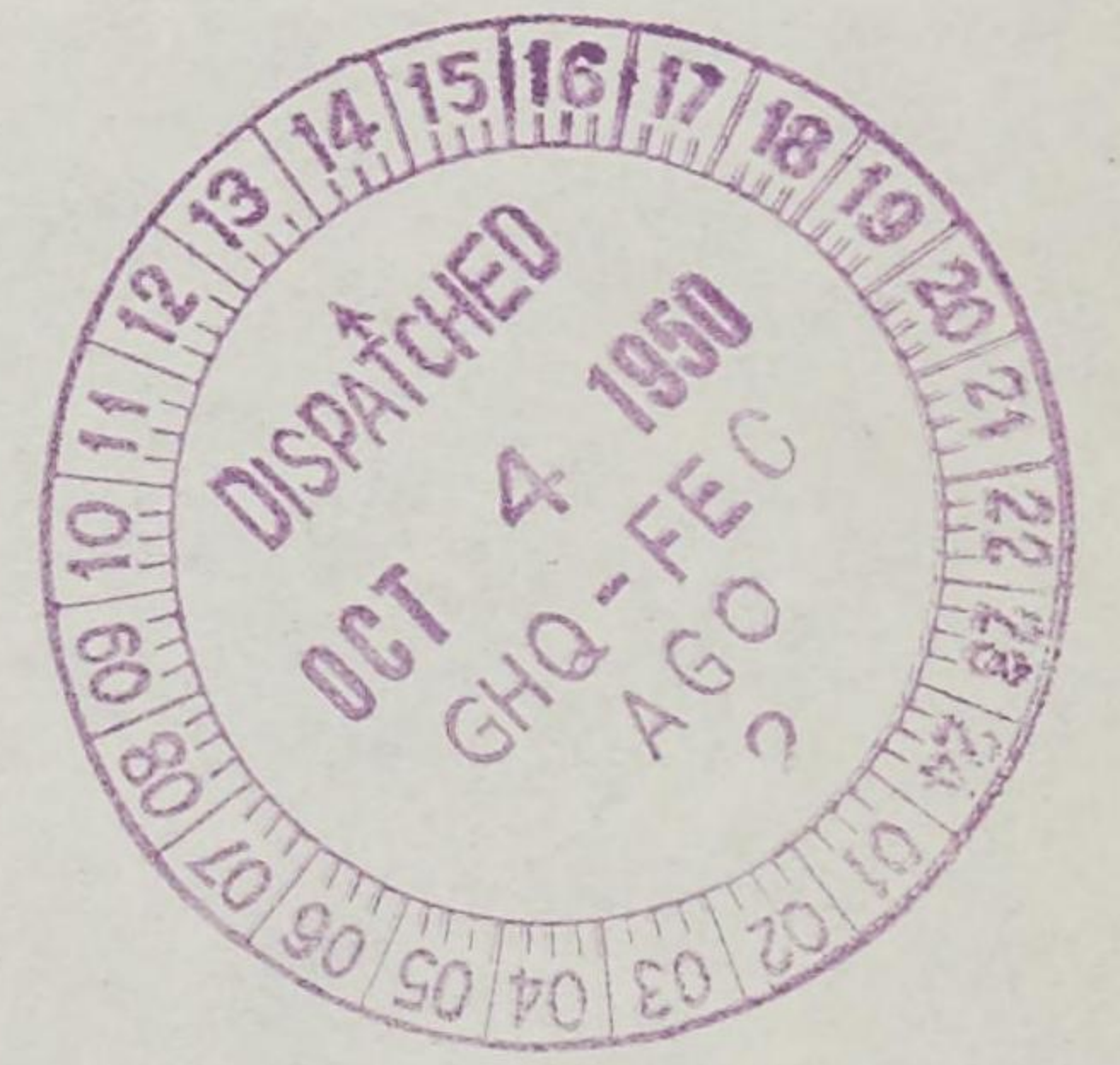
**INFO:**  
 CG 1503D MATS APO 226

DATE-TIME GROUP 4 October 1950		SECURITY CLASSIFICATION <i>Secret</i>	
PRECEDENCE FOR:	ACTION COURIER	INFORMATION COURIER	
<input type="checkbox"/> BOOK MESSAGE		<input type="checkbox"/> ORIGINAL MESSAGE	
<input type="checkbox"/> MULTIPLE ADDRESS		CRYPTOPRECAUTION <input type="checkbox"/> YES <input type="checkbox"/> NO	
REFERS TO MESSAGE:			
IDENTIFICATION		CLASSIFICATION	

1. Desire that present schedule on courier flight to Kimpo from Haneda be revised effective 5 Oct 50 as follows:

Leave Haneda	0900 I
Arrive Kimpo	1500 I
Leave Kimpo	1600 I
Arrive Haneda	2200 I

2. This confirms telephone conversation per Capt Bass, Trans Section, GHQ, and Major Trotter, A-3, FEAF.



SECURITY CLASSIFICATION <i>Secret</i>		PAGE 1 OF 1 PAGES	
DRAFTER'S NAME (and signature, when required)		RELEASING OFFICER'S SIGNATURE <i>L. L. Manly</i>	
SYMBOL AG 311.4 ( 4 Oct 50 ) TO		OFFICIAL TITLE L. L. MANLY Lt Col, AGC Asst Adj Gen	
TELEPHONE			



DECLASSIFIED

Authority NND975029

*Secret*

TO-M ELR:LAH:DKD:GLB:her  
3 October 1950

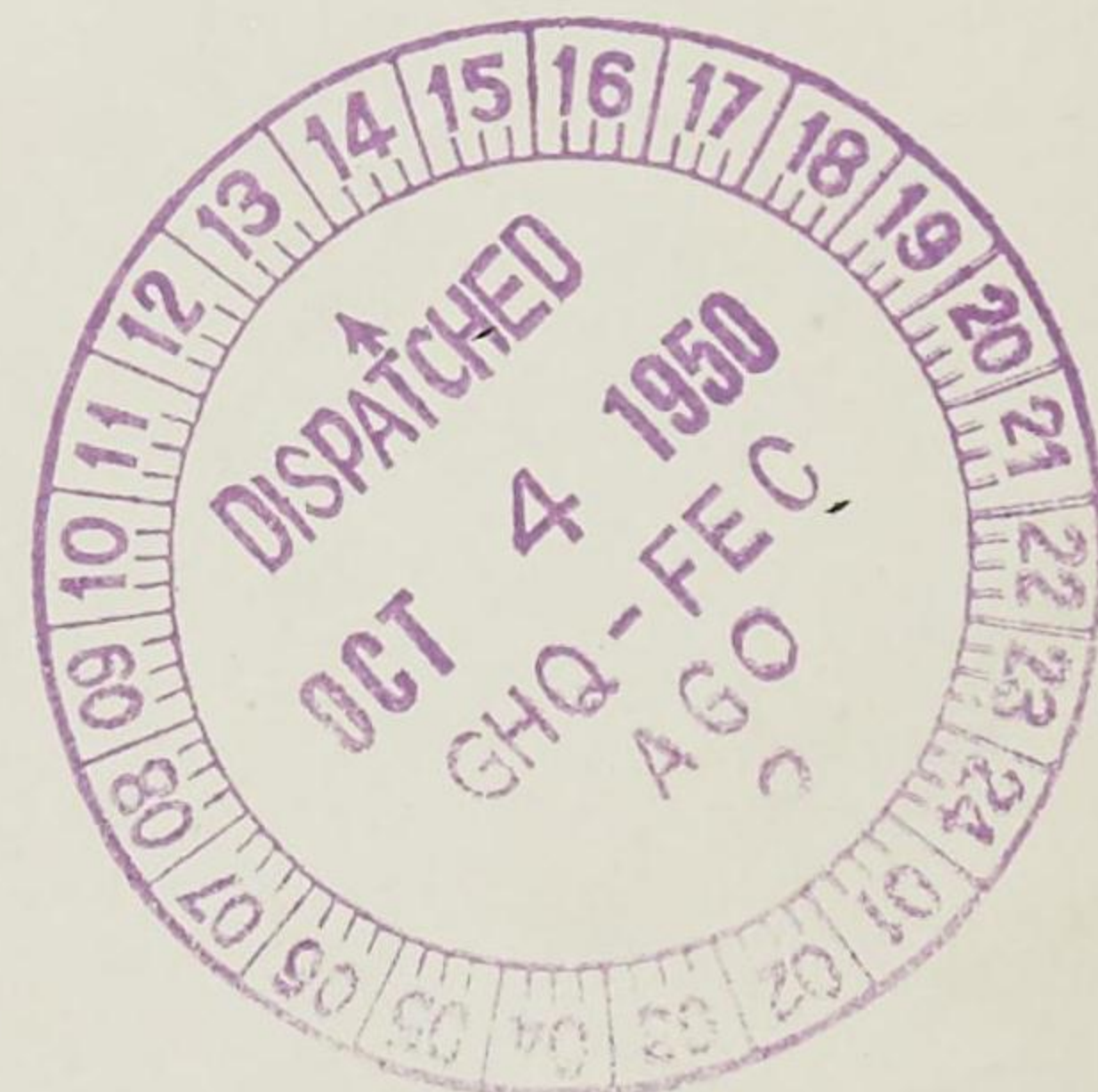
MEMO FOR RECORD:

1. Action initiated per G-2 (Col Whitmore) request to delay courier in order to have time to place a copy of Intelligence Summary aboard plane. G-2 did not have sufficient time to meet previous 0800 departure time.
2. CG X Corps msg X 10452, 2 Oct 50, concurs in departure time of 0900 of Kimpo Courier flight each day for purpose as stated.
3. Col Whitmore, G-2, stated via telephone that Acting C/S, GHQ, approved above action in outgoing msg prepared by G-2, to CG X Corps, changing departure time to assure Intelligence Summary arriving on time each day.
4. Action initiated and completed on Trans Jo # \_\_\_\_\_.

G.L.B. JB 26-6455

Distribution:

ROK  
GHQ UNC LS  
Trans (5 cys)



*Secret*



DECLASSIFIED

Authority NND975029

